













Astrocytes expressing Vitamin D-activating enzyme identify Parkinson's disease

Samanta Mazzetti^{1,2}  | Michela Barichella^{2,3} | Federica Giampietro¹  |
 Angelica Giana^{1,3} | Alessandra M Calogero¹  | Alida Amadeo^{1,7}  | Nicola Palazzi¹  |
 Alessandro Comincini¹  | Giorgio Giaccone⁴  | Manuela Bramerio⁵ |
 Serena Caronni^{2,3} | Viviana Cereda^{2,3}  | Emanuele Cereda⁶  |
 Graziella Cappelletti^{1,7}  | Chiara Rolando¹  | Gianni Pezzoli^{2,3} 

¹Department of Biosciences, Università degli Studi di Milano, Milan, Italy

²Fondazione Grigioni per il Morbo di Parkinson, Milan, Italy

³Parkinson Institute, ASST "G.Pini-CTO," Milan, Milan, Italy

⁴Unit of Neuropathology and Neurology, Fondazione IRCCS Istituto Neurologico Carlo Besta, Milan, Italy

⁵S. C. Divisione Oncologia Falck and S. C. Divisione Anatomia Patologica, Ospedale Niguarda Ca' Granda, Milan, Italy

⁶Clinical Nutrition and Dietetics Unit, Fondazione IRCCS Policlinico San Matteo, Pavia, Italy

⁷Center of Excellence on Neurodegenerative Diseases, Università degli Studi di Milano, Milan, Italy

Correspondence

Samanta Mazzetti, Department of Biosciences, Università degli Studi di Milano, Fondazione Grigioni per il Morbo di Parkinson, Milan, Italy.
 Email: samanta.mazzetti@gmail.com

Graziella Cappelletti, Department of Biosciences, Università degli Studi di Milano, Center of Excellence on Neurodegenerative Diseases, Università degli Studi di Milano, Milan, Italy.
 Email: graziella.cappelletti@unimi.it

Abstract

Introduction: Astrocytes are involved in Parkinson's disease (PD) where they could contribute to α -Synuclein pathology but also to neuroprotection via α -Synuclein clearance. The molecular signature underlying their dual role is still elusive. Given that vitamin D has been recently suggested to be protective in neurodegeneration, the aim of our study was to investigate astrocyte and neuron vitamin D pathway alterations and their correlation with α -Synuclein aggregates (ie, oligomers and fibrils) in human brain obtained from PD patients.

Methods: The expression of vitamin D pathway components CYP27B1, CYP24A1, and VDR was examined in brains obtained from PD patients (Braak stage 6; $n = 9$) and control subjects ($n = 4$). We also exploited proximity ligation assay to identify toxic α -Synuclein oligomers in human astrocytes.

Results: We found that vitamin D-activating enzyme CYP27B1 identified a subpopulation of astrocytes exclusively in PD patients. CYP27B1 positive astrocytes could display neuroprotective features as they sequester α -Synuclein oligomers and are associated with Lewy body negative neurons.

Conclusion: The presence of CYP27B1 astrocytes distinguishes PD patients and suggests their contribution to protect neurons and to ameliorate neuropathological traits.

KEYWORDS

astrocytes, CYP27B1, Parkinson's disease, Vitamin D, α -Synuclein oligomers

Samanta Mazzetti, Michela Barichella, Federica Giampietro, Graziella Cappelletti, Chiara Rolando and Gianni Pezzoli contributed equally to this work.

This is an open access article under the terms of the Creative Commons Attribution License, which permits use, distribution and reproduction in any medium, provided the original work is properly cited.

© 2022 The Authors. *CNS Neuroscience & Therapeutics* published by John Wiley & Sons Ltd.

1 | INTRODUCTION

Astrocytes are key players in Parkinson's disease (PD).¹⁻³ α -Synuclein misfolding and aggregation in neurons is the key hallmark of PD that associates with neuropathological deterioration.⁴ Astrocytes positively respond in PD as they can internalize and degrade α -Synuclein aggregates thus protecting neurons.^{1,5} On the contrary, the acquisition of inflammatory and altered metabolic properties in astrocytes results in detrimental effects and can potentially exacerbate the damage.^{6,7} Therefore, identifying glial specific mechanisms that promote the acquisition of protective phenotype can be beneficial for treating PD.

The activation of vitamin D pathway has been linked to neuroprotection.⁸ Vitamin D₃ (25-hydroxyvitamin D [25(OH)D]) is present in the serum, and it needs to be activated by 25-hydroxyvitamin D1- α -hydroxylase (CYP27B1) in order to exert its biological function.⁹ CYP27B1 and 1,25-dihydroxyvitamin D receptor (VDR) are expressed by neurons and glial cells in *post-mortem* human brain indicating that the vitamin D can be locally activated.^{10,11} PD patients are usually characterized by lower 25(OH)D levels than controls¹² and reduced serum 25(OH)D and polymorphisms in VDR have been associated with increased susceptibility to PD.¹³ Furthermore, lower serum concentrations have been observed in patients with the more severe symptoms including impaired cognitive functions.¹⁴⁻¹⁷ Interestingly, vitamin D supplementation can slow Hoehn-Yahr stage deterioration, particularly in patients carrying vitamin D receptor polymorphisms.¹³ In addition, vitamin D supplementation in PD patients has been recently suggested to play a protective role also in COVID-19 symptoms.¹⁸

Despite the important role of vitamin D in PD, it is unknown whether the expression of the key signaling components is altered during the disease.¹⁴ We therefore aimed to analyze the distribution and localization of vitamin D-activating and degrading enzymes CYP27B1 and CYP24A1 (25-Hydroxyvitamin D-24-hydroxylase) and VDR in *post-mortem* human brain (Braak stage 6) of PD patients. We observed that CYP27B1 was specifically increased in an astrocyte subpopulation of PD patients, exclusively in brain regions involved in the pathology. Furthermore, we investigated the involvement of CYP27B1 positive astrocytes in α -Synuclein pathology and we correlated their expression with α -Synuclein oligomers or Lewy bodies. These data all together could provide novel insights into vitamin D involvement in human astrocyte response during PD.

2 | MATERIALS AND METHODS

2.1 | Patients

The clinical diagnosis of PD was performed using the UK Brain Bank criteria^{19,20} and confirmed by neuropathological analysis carried out by two experts (GG and MB) in agreement with the current BrainNet Europe Consortium guidelines.²¹

Post-mortem human brains obtained from PD patients ($n = 9$; eight Braak stage 6 of α -Synuclein pathology; one amigdala prevalence) and from control subjects ($n = 4$) clinically free from neurological diseases were used (Table 1; Nervous Tissues Bank of Milan). Written informed consent was obtained from all subjects in compliance with relevant

Group	Gender	Age at onset (years)	Age at death (years)	Disease duration (years)	Hoehn-Yahr stage ^a	Dementia ^b
CTRL	M	/	71	/	/	No
CTRL	F	/	93	/	/	No
CTRL	F	/	82	/	/	No
CTRL	F	/	64	/	/	No
PD	M	62	80	18	4	No
PD	M	62	73	11	3	No
PD	M	59	87	28	3	No
PD	M	57	71	14	5	Yes
PD	M	57	75	18	3	No
PD	F	53	91	38	5	Yes
PD	F	59	79	20	4	No
PD	F	55	79	24	4	No
PD	F	43	72	29	5	Yes

Note: Abbreviations: CTRL, Control; F, female; M, male; PD, Parkinson's disease.

^aAs assessed 1 year before death;

^bAs defined by UPDRS-Part I, item 1 score ≥ 2 and also mini-mental state examination (MMSE) if necessary.

TABLE 1 Demographic and clinical characteristics of the subjects included in the present study. All the patients were enrolled and followed during their disease by neurologists experienced in movement disorders at the Parkinson's Institute ASST G. Pini-CTO of Milan

laws and institutional guidelines and approved by the appropriate institutional committees.

Brains were fixed in 10% buffered formalin for at least 1 month at 20°C. After dehydration and clearing steps, selected areas were paraffin embedded and 5 µm thick frontal cortex, mesencephalic sections, containing *substantia nigra*, pons, and bulb were cut and processed for the following analysis.

2.2 | Reagents

Primary and secondary antibodies and kit are summarized in Table 2.

2.3 | Immunohistochemistry

Antigen retrieval (80% formic acid for 20 min at room temperature, RT) was necessary only for VDR staining. Samples were incubated for 20 min with 3% H₂O₂ followed by 1% BSA diluted in 0.01 M phosphate saline buffer (PBS) containing 0.1% Triton X-100 (PBS-T). Primary antibody (anti-VDR, anti-CYP27B1, anti-Glial fibrillary acidic protein, GFAP) in 1% BSA diluted in PBS-T was incubated overnight at RT. Antigen-antibody bound was visualized using goat anti-mouse (for VDR) or anti-rabbit (for CYP27B1 and GFAP) secondary antibody (1 h, RT) and with 3,3'-Diaminobenzidine as chromogen (DAB kit).

TABLE 2 Primary and secondary antibodies and kits used in this study

Antigen	Code	Host	Dilution
Primary antibodies			
25-hydroxyvitamin D1- α -hydroxylase (CYP27B1)	ABN182 Merck	Rabbit	1:50 (IHC) 1:1500 (IF)
25-Hydroxyvitamin D – 24-hydroxylase (CYP24A1)	HPA022261 Merck	Rabbit	1:100
Apolipoprotein E (ApoE)	AB947 Merck	Goat	1:300
C3D Complement (C3)	A0063 Dako	Rabbit	1:100
Glial Fibrillary Acidic Protein (GFAP)	Z0334 Dako	Rabbit	1:300
Lysosome-associate Membrane Protein 1 (LAMP1)	L1418 Sigma	Rabbit	1:100
S100 β	Z0311 Dako	Rabbit	1:250
S100 β	287006 Synaptic Systems	Chicken	1:1000
Tyrosine Hydroxylase (TH)	PA – 18372 Thermo Fisher	Goat	1:200
Vitamin D Receptor (VDR)	Sc – 13133 clone D – 6 Santa Cruz	Mouse	1:50
α -Synuclein	Ab27766 clone LB509 Abcam	Mouse	1:500
α -Synuclein	S3062 Merck	Rabbit	1:2000
Fluorochrome/Enzyme Antibody			
Secondary antibodies			
Alexa Fluor [®] 488 anti-rabbit	A21206 Thermo Fisher	Donkey	1:200
Alexa Fluor [®] 568 anti-goat	A11057 Thermo Fisher	Donkey	1:200
Alexa Fluor [®] 647 anti-rabbit	A32795 Thermo Fisher	Donkey	1:200
Alexa Fluor [®] 647 anti-goat	Jackson ImmunoResearch	Donkey	1:400
Cy3 anti-chicken	Jackson ImmunoResearch	Donkey	1:400
HRP anti-rabbit	Jackson ImmunoResearch	Donkey	1:5000
EnVision System-HRP Labeled polymer anti-mouse	K4001 Dako Omnis	Goat	1:1
EnVision System-HRP Labeled polymer anti-rabbit	K4003 Dako Omnis	Goat	1:1
ImmPRESS [™] -AP anti- rabbit	MP – 5401Vector	Horse	1:1
Commercial assay			
Duolink [®] in situ probe marker MINUS	DUO920101KT Merck	-	*
Duolink [®] in situ probe marker PLUS	DUO920091KT Merck	-	*
Duolink [®] In Situ Detection Reagents Red	DUO92008 Merck	-	*
EnVision FLEX DAB + SubstrateChromogen System	K3468 Dako	-	*
EnVision [™] Flex Target retrieval solution high pH	K8004 Dako	-	*
Fast Blue B salt	F3378-1G Merck	-	1 mg/ml
Hoescht 33342	62249 Thermo Fisher	-	1:5000
TSA [®] Plus Fluoresceine	NEL741001KT Akoya Biosciences	-	1:50

*Used as indicated by the manufacture instruction.

CYP27B1/Haematoxylin

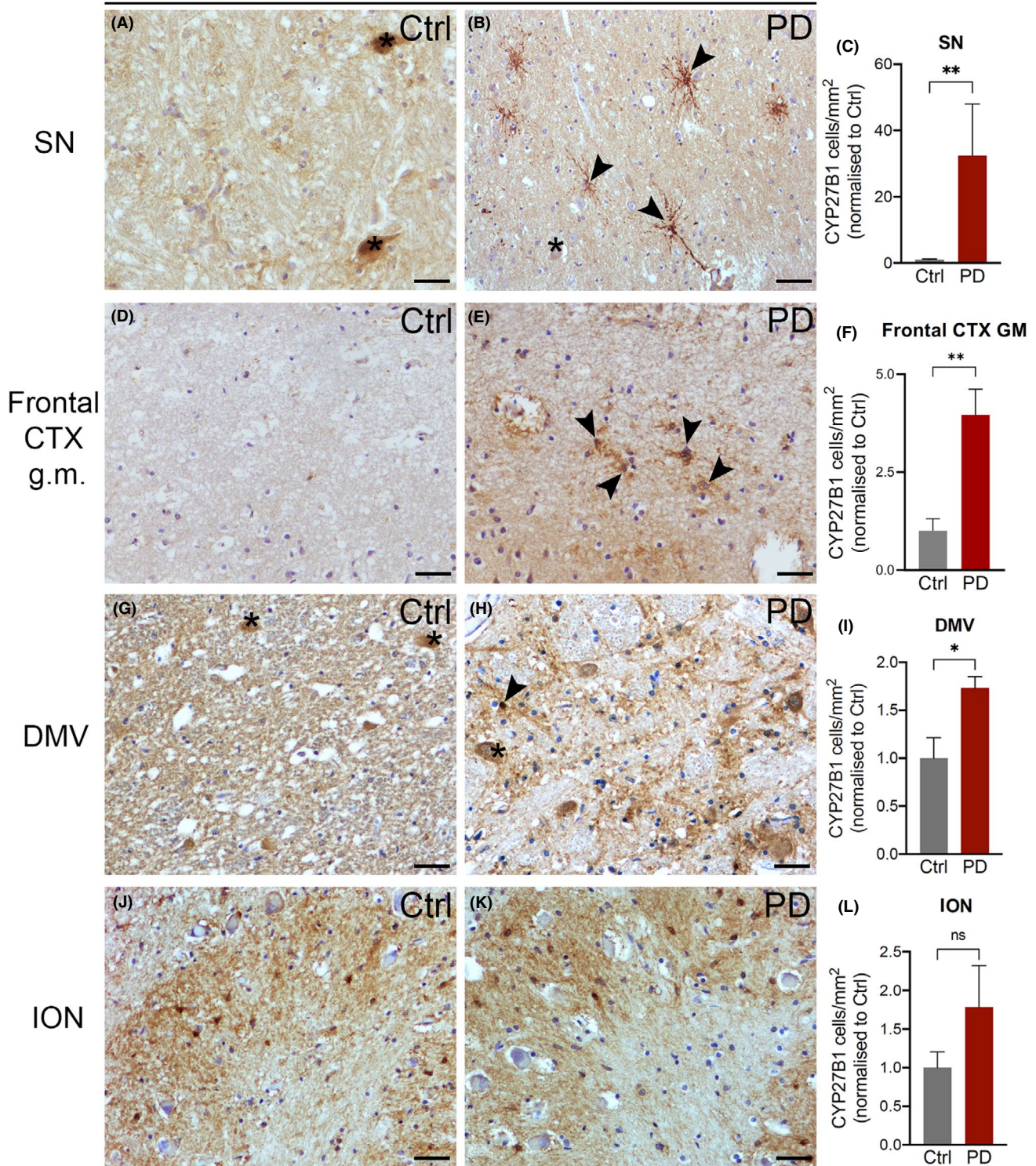


FIGURE 1 CYP27B1 distribution in post-mortem human brain. In *substantia nigra* (SN; A and B) and in dorsal motor nucleus of vagus (DMV; G and H), CYP27B1 staining is mainly localized in neuronal cell bodies and in neuropil of control subjects (Ctrl; A and G), while in PD patients, CYP27B1 intense staining is visible in astrocytes with a morphology resembling varicose projection astrocytes (PD; B and H; black arrowheads). In layer I of frontal cortex gray matter (Frontal CTX g.m., D and E), a low staining is detectable in controls (D), while in PD patients CYP27B1 astrocytes are well visible (E). In inferior olivary nucleus (ION; J and K), CYP27B1 staining is present in cell bodies of astrocytes in both control and PD samples. Nuclei are stained with hematoxylin. Black asterisks: dopaminergic neurons containing neuromelanin. Scale bar, 40 μ m. Graphs show the density of CYP27B1 positive astrocytes in controls and PD patients in SN (C, 22 vs 694), Frontal Cortex GM (F, 245 vs 2307), DMV (I, 428 vs 793), and ION (L, 374 vs 461). Data in graphs are reported as mean \pm standard error; Mann-Whitney test (* $p < 0.05$, ** $p < 0.01$)

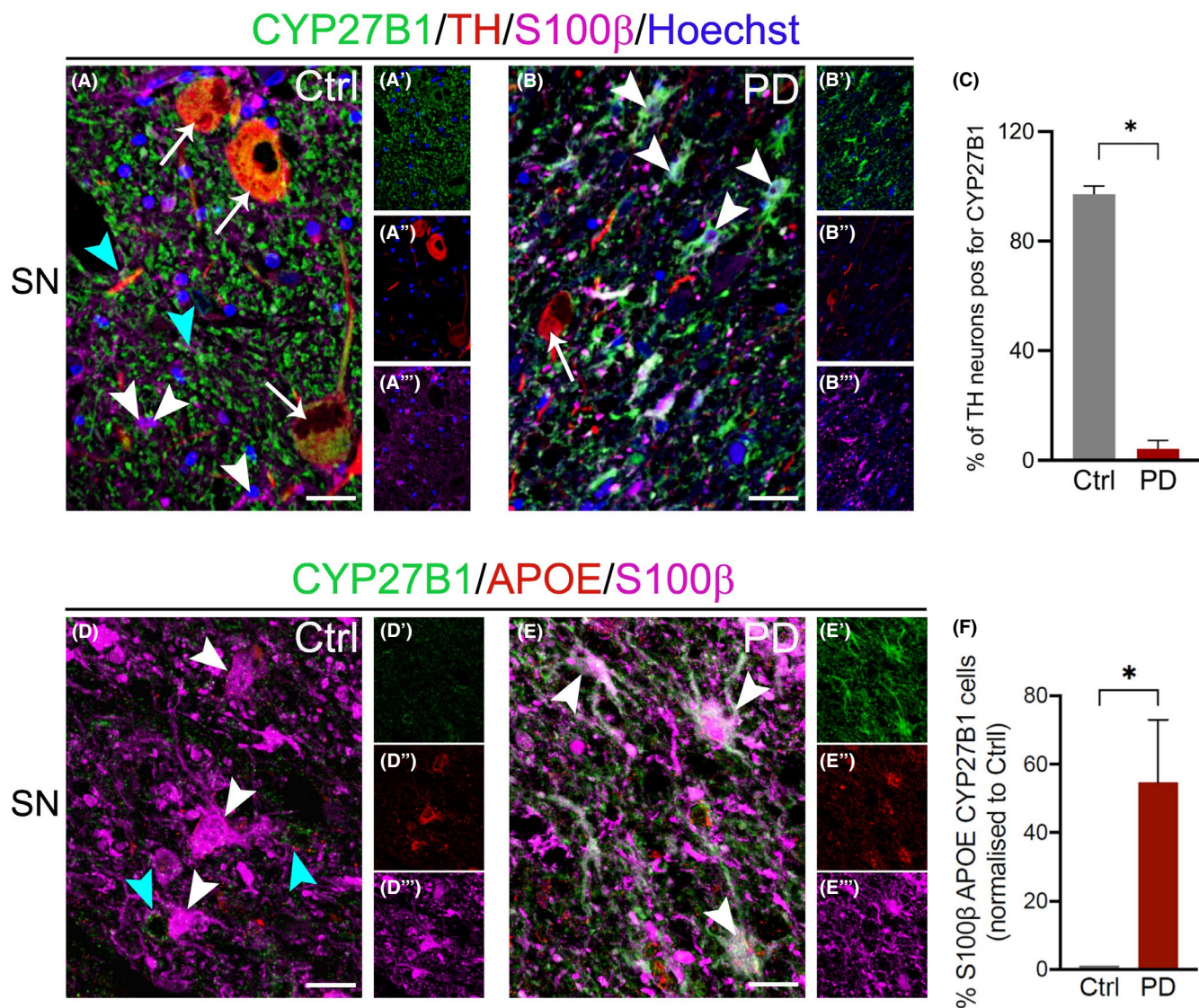


FIGURE 2 Confocal analysis of CYP27B1 positive cells in *substantia nigra* of control subjects and PD patients. CYP27B1 staining is intense in TH positive neurons (A, B; white arrows) in controls (A-A'') but not in PD (B-B''). On the contrary, in S100 β positive astrocytes (A, B; white arrowheads), CYP27B1 staining is intense in PD (B, B', B''), while it is restricted to astrocyte processes (A, A', A''; cyan arrowheads) in controls. Nuclei are counterstained with Hoechst. Scale bar, 30 μ m. Graph shows the percentage of TH neurons positive for CYP27B1 (113 neurons analyzed for controls, $n = 3$, and 214 for PD, $n = 6$). CYP27B1 staining is intense and diffuse in cell bodies and processes of ApoE and S100 β positive astrocytes (white arrowheads) in PD samples (E-E''), while it is visible in astrocytic end-feet of controls (D-D''; cyan arrowheads). Scale bar, 15 μ m. Graph (F) shows the percentage of astrocytes positive for S100 β , APOE, and CYP27B1 (137 astrocytes analyzed for controls, $n = 3$, and 118 for PD, $n = 3$). Data in graphs (C, F) are reported as mean \pm standard error; Mann-Whitney test (* $p < 0.05$)

In order to associate Lewy body pathology to CYP27B1 staining, we performed a double immunoenzymatic procedure using anti α -Synuclein (1:500, LB509). The samples were also pretreated with 20% acetic acid for 20 min to inactivate endogenous alkaline phosphatase. The secondary antibodies used were goat anti-mouse conjugated with HRP and rabbit conjugated with alkaline phosphatase. Then, a substrate solution of 0.1 M Tris-HCl (pH 9.2–9.4), 1-Naphthyl phosphate disodium salt (1mg/ml), and Fast Blue B salt (1mg/ml) was used to develop the CYP27B1 staining and DAB incubation to visualize α -Synuclein.

2.4 | Immunofluorescence and confocal analysis

To detect CYP27B1, we used tyramide signal amplification system. The sections were incubated with: (i) CYP27B1 (1:1500) in 1% BSA and 0.3% Triton X-100 diluted in TN (0.1 M Tris-HCl, 0.15 M NaCl) overnight at RT; (ii) HRP-conjugated secondary antibodies (donkey anti-rabbit, 1:5000) in TN for 2 h at RT; (iii) FITC-labeled tyramide (1:50) in Amplification Diluent for 2 min at RT. Classical immunofluorescence was performed with different primary antibodies (anti-GFAP, 1:300 or S100 β 1:250, and Apolipoprotein E 1:300; or C3D Complement 1:100;

GFAP/Haematoxylin

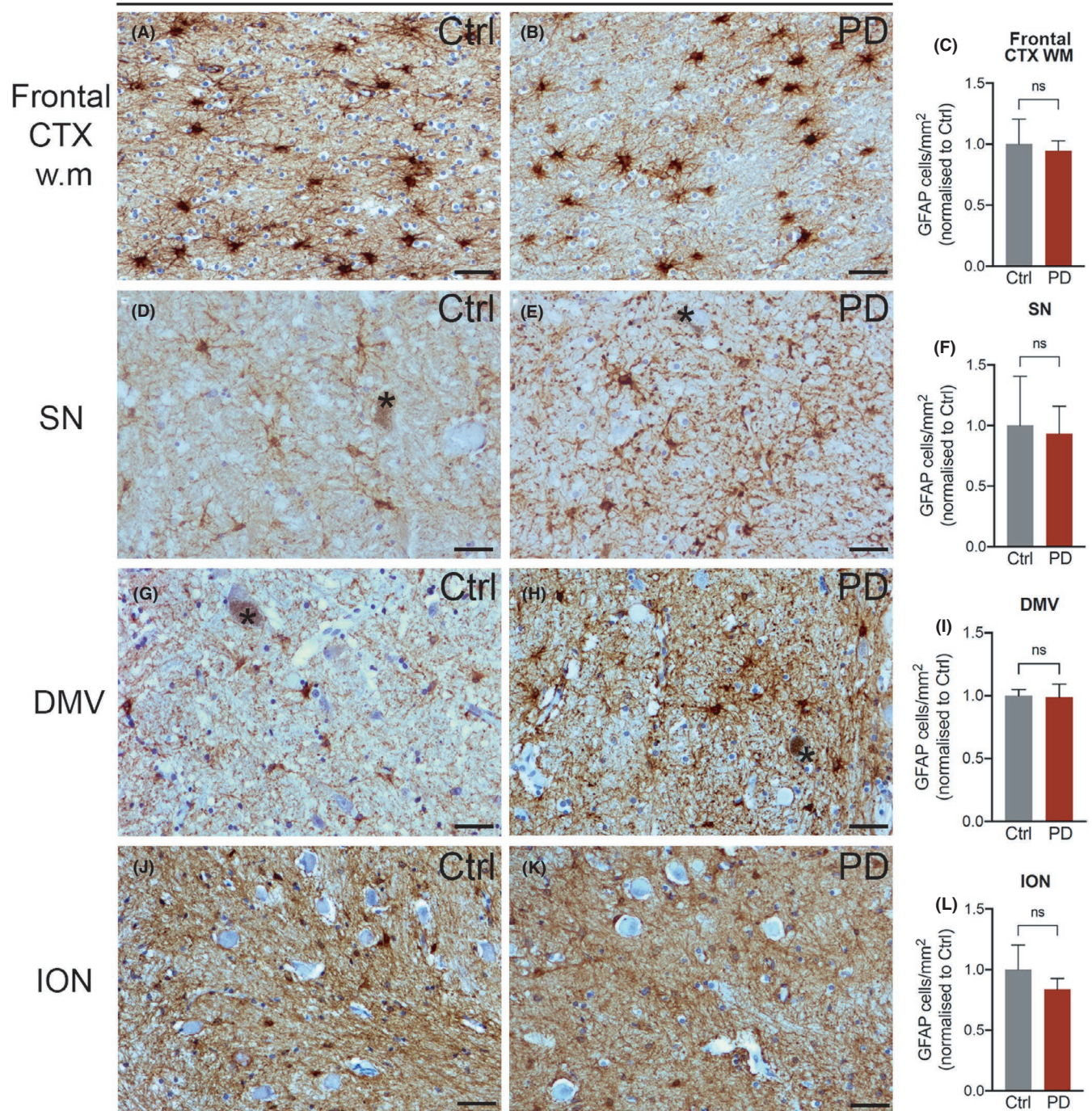


FIGURE 3 GFAP distribution in *post-mortem* human brain. In frontal cortex white matter (Frontal CTX w.m.; A and B), *substantia nigra* (SN; D and E), dorsal motor nucleus of vagus (DMV; G and H), and inferior olivary nucleus (ION; J and K), GFAP staining is localized in human astrocytes in control and PD samples. Nuclei are stained with hematoxylin. Black asterisks: dopaminergic neurons containing neuromelanin. Scale bar, 40 μ m. Graphs show the density of GFAP positive astrocytes in controls and PD patients Frontal Cortex WM (C, 1527 vs 3363), SN (F, 776 vs 897), DMV (I, 850 vs 1029), and ION (L, 1281 vs 1895). Data in graphs are reported as mean \pm standard error; Mann-Whitney test (n.s.)

or Tyrosine Hydroxylase 1:200; or LAMP1 1:100 overnight at RT) followed by highly pre-adsorbed secondary antibodies (2 h). A control was performed using CYP27B1 diluted 1:1500 revealed with Alexa Fluor 488 donkey anti-rabbit and gave no signal. Proximity ligation

assay was used for α -Synuclein oligomers using red amplification reagent, as previously described.²² In order to visualize total α -Synuclein, Alexa Fluor 647 donkey anti-rabbit (1:200) was added during polymerase step. Hoescht 33342 (1:5000 for 10 min) was used for nuclei

FIGURE 4 CYP27B1 positive astrocytes do not display neurotoxic signature. CYP27B1 positive astrocyte (green) and C3 (red) staining in PD samples (A). Nuclei are counterstained with Hoechst (blue). Scale bar, 10 μ m. Graph (B) shows the percentage of C3 cells containing CYP27B1 (200 cells analyzed, $n = 4$ patients). Data in graph are reported as mean \pm standard error; Mann-Whitney test (* $p < 0.05$)

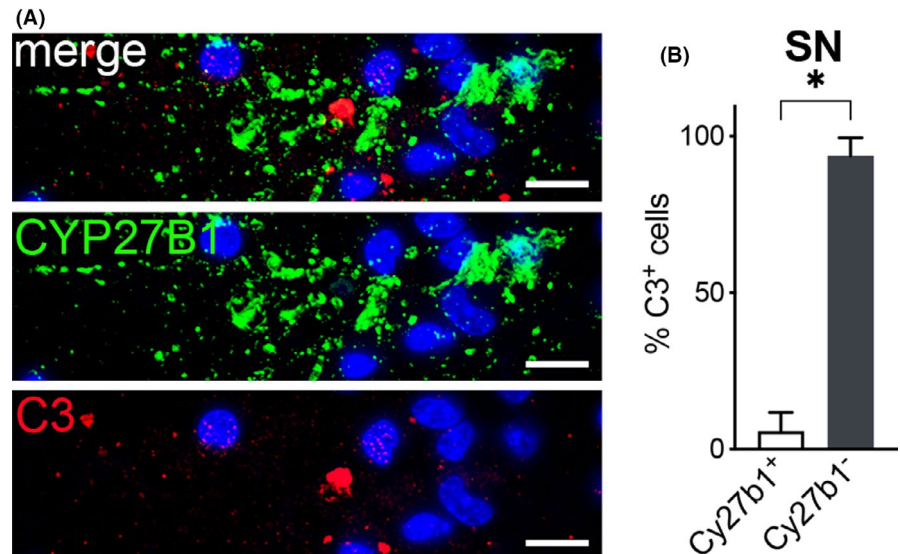
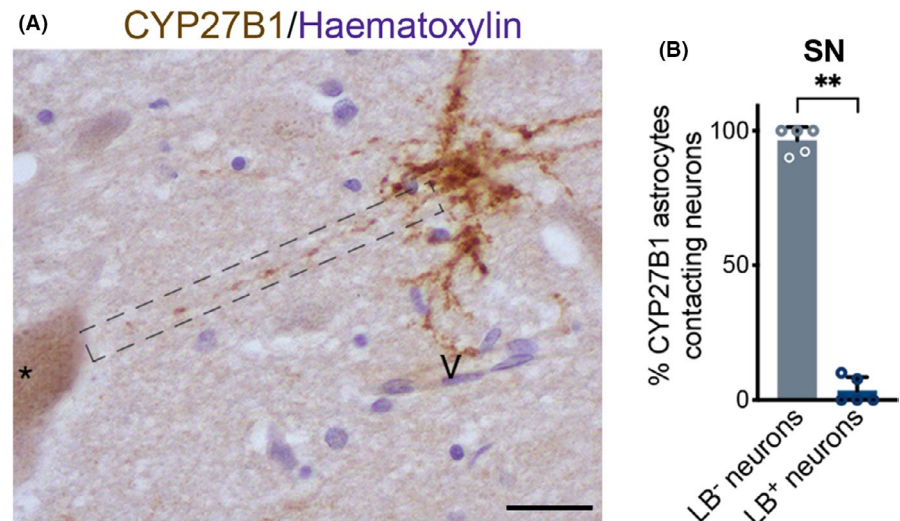


FIGURE 5 Correlation between CYP27B1 astrocytes and Lewy body pathology. CYP27B1 positive astrocyte characterized by a long varicose process (dashed rectangle) contacting a dopaminergic neuron containing neuromelanin (black asterisk) and a blood vessel (V) in PD sample (A). Nuclei are counterstained with hematoxylin. Scale bar, 30 μ m. Graph (B) shows that most neurons contacted by CYP27B1 positive astrocytes do not contain Lewy bodies (530 neurons analyzed, $n = 5$ patients). Data in graph are reported as mean \pm standard error; Mann-Whitney test (** $p < 0.01$)



counterstaining. Samples were mounted using Mowiol-DABCO and examined with Nikon spinning disk confocal microscope, equipped with CSI-W1 confocal scanner unit.

2.5 | Quantification and statistical analysis

All quantifications were independently performed using ImageJ (cell counter) by two different operators (FG, SM, or CR). Statistical comparisons were conducted by Mann-Whitney and one-way ANOVA tests. Statistical significance was assessed using GraphPad Prism software. Significance was established at $p < 0.05$.

2.6 | Data availability

The datasets used and analyzed during the current study are available from the corresponding author upon reasonable request.

3 | RESULTS

3.1 | Vitamin D-activating enzyme is overexpressed in astrocytes of PD patients

We tested whether vitamin D signaling components are altered in PD. In *substantia nigra*, VDR localized in the nucleus and cytoplasm of neuromelanin containing neurons with no differences between controls and PD patients (Figure S1 A-C). Besides, vitamin D degrading enzyme CYP24A1 was not altered in PD and was mainly expressed in neurons as in controls (Figure S1 D-E²³).

In *substantia nigra*, CYP27B1 was mainly present in dopaminergic neurons as revealed by the presence of neuromelanin (Figure 1 A) and the staining with TH (Figure 2 A-A^{'''}). The percentage of dopaminergic neurons positive for CYP27B was significantly decreased in PD (Figure 2 B-C) compared to control subjects (Figure 2 A-A^{'''}). This result could suggest that a less activation of vitamin D is implicated in the disease. Furthermore, in PD, CYP27B1 labeled a subpopulation of parenchymal astrocytes with long processes and varicosities

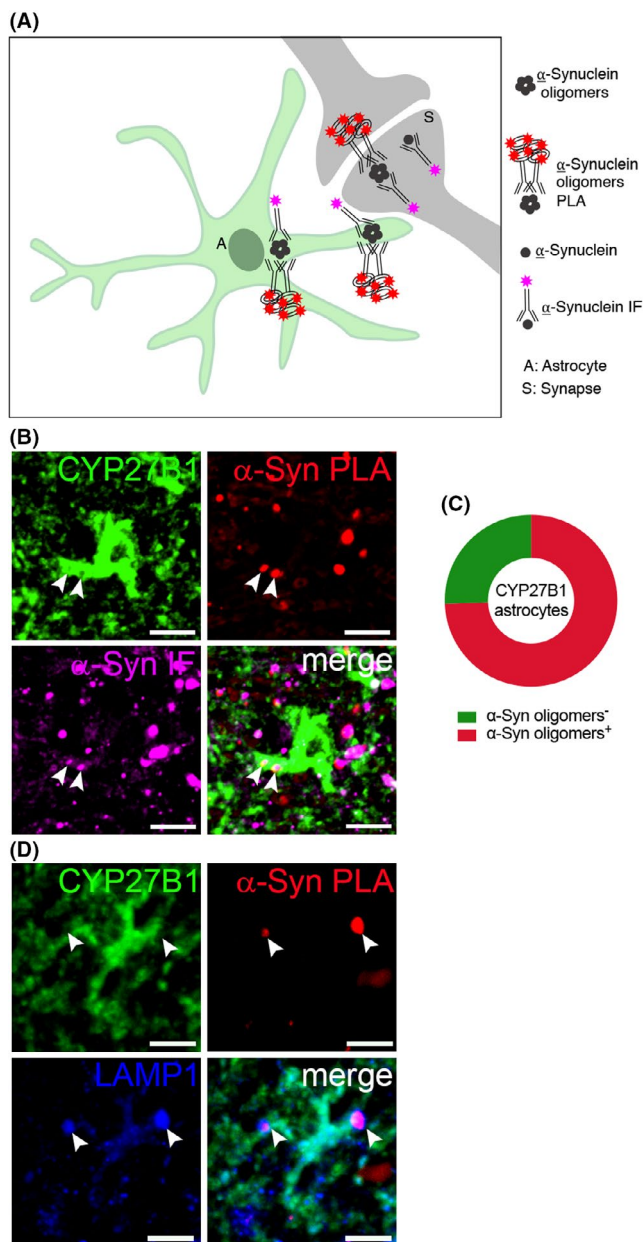


FIGURE 6 CYP27B1 astrocytes contain α -Synuclein oligomers. (A) Scheme representing the experimental procedure to visualize the relationship between α -Synuclein oligomers (proximity ligation assay, PLA) and total α -Synuclein (immunofluorescence, IF) with CYP27B1 positive astrocyte. (B) CYP27B1 positive astrocytes (green) containing total α -Synuclein staining (purple) and α -Synuclein oligomers (red) in PD samples. Scale bar, 25 μ m. Graph (C) shows that 74.4% of CYP27B1 positive astrocytes ($n = 43$) bears α -Synuclein oligomers. (D) CYP27B1 positive astrocytes (green) containing vesicles positive for both α -Synuclein oligomers (red) and LAMP1 (blue). Scale bar, 40 μ m

that resembled the varicose projection astrocytes exclusively found in human brain (Figure 1 B,C, Figure 2 E-E'' and Figure 5 A).^{24,25} CYP27B1 positive astrocytes increased also in other areas involved in the pathology, including the frontal cortex (gray matter, Figure 1 D-F; white matter, Figure 7 A,B,D) and the dorsal motor nucleus of vagus (Figure 1 G-I), while no differences were observed in the

inferior olivary nucleus that is instead spared by the disease (Figure 1 J-L). We confirmed that CYP27B1 positive cells in PD are astrocytes expressing the astrocytic markers S100 β , Apolipoprotein E, and GFAP (Figure 2 D-F; Figure S2 A-B'''). Interestingly, the increase in CYP27B1 positive astrocytes was not the result of a general expansion of astrocytes in PD, as the number of GFAP positive cells was unchanged between control subjects and PD patients (Figure 3 A-L), but it could be the result of a neuroprotective response. In summary, CYP27B1 overexpressing astrocytes are enriched in PD patients.

3.2 | CYP27B1 positive astrocytes and α -Synuclein pathology

We tested whether CYP27B1 positive astrocyte accumulation is beneficial or detrimental for PD neuropathology. During PD, astrocytes can acquire a neurotoxic phenotype that exacerbate neuronal damage.⁶ To determine whether CYP27B1 positive astrocytes have a neurotoxic signature, we analyzed the expression of complement component 3 (C3).⁶ We found that among all C3 positive cells in PD *substantia nigra*, only 4% were CYP27B1, thus indicating that they did not acquire a neurotoxic state (Figure 4 A,B).

Next, we investigated the contribution of CYP27B1 positive astrocytes in α -Synuclein pathology. Braak stage 6 dopaminergic neurons accumulate Lewy bodies in their cytoplasm.^{26,27} We examined the relationship between dopaminergic neurons and CYP27B1 positive astrocytes in the *substantia nigra* (Figure 5 A). Interestingly, the majority of CYP27B1 positive astrocytes were in direct contact with neurons that did not contain Lewy bodies (Figure 5 B). Consistently with this data, we did not observe CYP27B1 positive astrocytes in *locus coeruleus*, where almost all the neurons we analyzed contained Lewy bodies (Figure S3 A-D''').

We therefore hypothesized that CYP27B1 positive astrocytes can be directly linked to α -Synuclein uptake and clearance. We performed proximity ligation assay to detect α -Synuclein oligomers *in vivo* and found that 74.4% of CYP27B1 positive astrocytes were able to uptake the toxic α -Synuclein aggregates (Figure 6 A-C and S4 A-B'''). Then, we used LAMP1, a marker for degradative autophagy-lysosomal organelles,²⁸ in order to discover whether autophagy could be the mechanism involved in α -Synuclein clearance in CYP27B1 positive astrocytes. Notably, we found that α -Synuclein oligomers that are detected inside CYP27B1 positive astrocytes colocalize with LAMP1-positive vesicles (Figure 6 D and S4 C-D'''), thus suggesting the involvement of an autophagy pathway.

Finally, we examined whether the increase in CYP27B1 positive astrocytes correlated with clinical aspects of PD patients (Table 1). We observed that CYP27B1 expression in the frontal cortex white matter was significantly increased in patients with Lewy body pathology, but without white matter alteration or dementia (Figure 7 A,B,D). Conversely, PD patients with white matter alterations and concomitant dementia had significantly fewer CYP27B1 positive astrocytes in the cortex (Figure 7 C,D), despite the total GFAP positive cells were unchanged (Figure 3 C).

CYP27B1/Haematoxylin

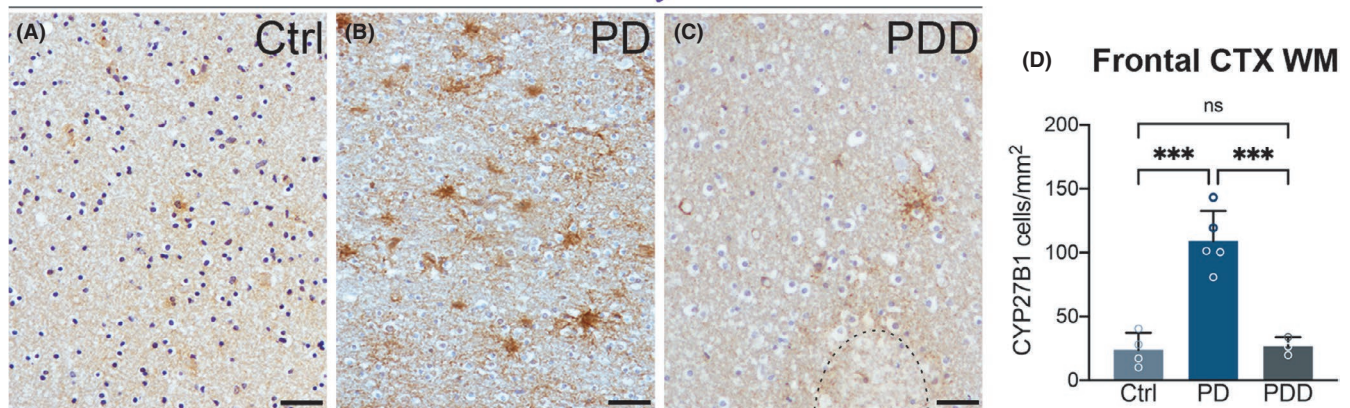


FIGURE 7 Comparison of the CYP27B1 positive astrocytes distribution in frontal cortex (white matter) between control (A), PD (B), and PD dementia (C) samples. In (C) is visible a white matter lesion (black outline). Graph (D) shows the number of CYP27B1 astrocytes normalized on area unit (807 astrocytes analyzed for controls, $n = 4$; 4594 for PD, $n = 5$, and 647 for PD dementia, $n = 3$). Nuclei counterstained with hematoxylin (blue). Scale bar, 40 μm . Data in the graph are mean \pm standard error; one-way ANOVA with Tukey's multiple comparison test (***) $p < 0.001$

4 | DISCUSSION

Our study unravels for the first time the alterations of vitamin D pathway in human brain of PD patients. While CYP24A1 and VDR did not display different expression between patients and controls, we showed that CYP27B1 increased in a subpopulation of astrocytes with neuroprotective features exclusively in brain areas involved in PD pathology (dorsal motor nucleus of vagus, *substantia nigra* and frontal cortex). Moreover, we found that CYP27B1 positive astrocytes are involved in an autophagy mediated- α -Synuclein uptake. These findings suggest an unprecedented role for CYP27B1 positive astrocytes in the pathology of PD.

Reactive astrocytes heavily contribute to neurodegeneration, and recent evidence suggests that neurotoxic astrocytes accumulate also in the *substantia nigra* of PD patients.⁶ The exact mechanism that drives astrocytes into detrimental alterations (eg, the secretion of neurotoxins) is unknown. Vitamin D prevents these astrocytes alterations in PD mouse model,²⁹ while vitamin D signaling is unknown in PD patients. We found that activation of vitamin D pathway might be a novel mechanism to prevent the neurotoxic switch of astrocytes. Indeed, CYP27B1 positive astrocytes did not upregulate C3, thus protecting neurons from the complement component-driven synapse degeneration.

Recent evidence suggests that astrocytes participate in α -Synuclein oligomer clearance *in vitro* in primary cultures and patient-derived iPSC model.^{2,5,30} Starting from these previous papers on cellular model, showing that α -Synuclein fibrils co-localized with LAMP1, a marker for degradative autophagy-lysosomal organelles,²⁸ we looked for the involvement of the autophagy pathway in α -Synuclein clearance occurring in our samples. The strategy of staining with LAMP1 allowed us to highlight the involvement of autophagy in α -Synuclein clearance that occurs in the complexity and uniqueness of the human brain. Hence, we show for the first time that an astrocyte subpopulation that is positive for CYP27B1 can

internalize α -Synuclein oligomers through autophagy in PD patients. Interestingly, these cells morphologically resemble varicose projection astrocytes that are known to be fast conduit in neuron-vascular unit and are characterized by high speed calcium waves.²⁵ In addition, the overexpression of wild-type or familial mutant α -Synuclein triggers calcium homeostasis alterations.³¹ Given the key role of vitamin D in calcium buffering,³² we speculate that the increase of CYP27B1 in PD astrocytes could be a positive strategy to counteract the calcium alterations. In line with that, CYP27B1 positive astrocytes are exclusively in contact with dopaminergic neurons without Lewy bodies suggesting their role in α -Synuclein oligomers clearance and osmoregulatory function.

Vitamin D deficiency may lead to cognitive impairments.¹⁴⁻¹⁷ Vitamin D supplementation can be beneficial in slowing down PD progression, but the underlying mechanisms are still unknown.^{13,33} We found that the brains of PD patients without dementia have a three-fold higher content of CYP27B1 positive astrocytes in the frontal cortex and do not have white matter degeneration, thus suggesting that vitamin D could exert its neuroprotective role through astrocytes.¹¹ Although it would be appropriate to assess serum 25(OH)D and start supplementation to prevent PD or to slow its progression, the exact mechanisms underlying aberrant vitamin D pathways still need to be established. Considering that PD patients are usually characterized by low serum 25(OH)D,¹² data in the different study groups presented low heterogeneity and VDR and CYP24A1 are similarly expressed in brains of PD patients and controls, a noteworthy question raised by our findings is how CYP27B1 can prevent neurotoxic alterations and promote α -Synuclein uptake by astrocytes? A limitation of our study is that we could not assess 25(OH)D levels and genetic status of the analyzed patients, and thus, we cannot exclude the potential contribution neither of concomitant vitamin D deficiency nor of polymorphisms in VDR.¹³ Further studies are warranted to clarify the complex relationship between vitamin D activation in astrocytes and PD.

Finally, our neuropathological investigation links for the first time vitamin D to the clearance of α -Synuclein aggregates and demonstrates that the presence of CYP27B1 positive astrocytes distinguishes PD patients.

ACKNOWLEDGMENTS

The authors thank all patients and families for their contribution, and "Fondazione Grigioni per il Morbo di Parkinson" (Milan-Italy) for SM and FG salary and for long-lasting support to GC. Part of this work was carried out at Unitech-NOLIMITS, an advanced imaging facility established by the Università degli Studi di Milano.

CONFLICT OF INTEREST

The authors reported no conflict of interest.

AUTHOR CONTRIBUTIONS

Samanta Mazzetti, Chiara Rolando, Federica Giampietro, Michela Barichella, and Graziella Cappelletti contributed equally to the original research idea conception, study design, literature search, data collection, data analysis and interpretation, figure and table formatting, and writing of the manuscript. Angelica Giana, Alessandra M Calogero, Giorgio Giaccone, Viviana Cereda, and Emanuele Cereda contributed to data collection and analysis and assisted in the writing of the text. Alida Amadeo, Nicola Palazzi, Alessandro Comincini, Manuela Bramerio, and Serena Caronni contributed to data collection. Graziella Cappelletti and Gianni Pezzoli supervised the study and assisted in the writing of the text. All authors provided intellectual content and critical review of the manuscript.


ETHICS STATEMENT

The study procedures were in accordance with the principles outlined in the Declaration of Helsinki and approved by the Ethics Committee of University of Milan (protocol code 66/21, 15.06.2021).

DATA AVAILABILITY STATEMENT

The dataset of this research is deposited in the official computer archive of the Cappelletti's laboratory (Department of Biosciences, University of Milan), and it is available upon request.

ORCID

Samanta Mazzetti  <https://orcid.org/0000-0002-2944-8357>
 Federica Giampietro  <https://orcid.org/0000-0002-4000-8934>
 Alessandra M Calogero  <https://orcid.org/0000-0003-2262-4992>
 Alida Amadeo  <https://orcid.org/0000-0002-7581-8339>
 Nicola Palazzi  <https://orcid.org/0000-0001-9681-3695>
 Alessandro Comincini  <https://orcid.org/0000-0002-8690-4224>
 Giorgio Giaccone  <https://orcid.org/0000-0002-4803-0802>
 Viviana Cereda  <https://orcid.org/0000-0003-4818-0963>
 Emanuele Cereda  <https://orcid.org/0000-0002-0747-1951>
 Graziella Cappelletti  <https://orcid.org/0000-0003-0903-5392>
 Chiara Rolando  <https://orcid.org/0000-0003-2418-8346>
 Gianni Pezzoli  <https://orcid.org/0000-0003-4665-6710>

REFERENCES

- Loria F, Vargas JY, Bousset L, et al. α -Synuclein transfer between neurons and astrocytes indicates that astrocytes play a role in degradation rather than in spreading. *Acta Neuropathol.* 2017;134(5):789-808. Available from <http://www.ncbi.nlm.nih.gov/pubmed/28725967>
- Miyazaki I, Asanuma M. Neuron-Astrocyte Interactions in Parkinson's Disease. *Cells.* 2020;9(12):2073-4409. Available from: <https://www.mdpi.com/2073-4409/9/12/2623>
- Kam T-I, Mao X, Park H, et al. Poly(ADP-ribose) drives pathologic α -synuclein neurodegeneration in Parkinson's disease. *Science* (80-). 2018;362(6414):eaat8407. 10.1126/science.aat8407
- Goedert M, Jakes R, Spillantini MG. The Synucleinopathies: Twenty Years On. *J Parkinsons Dis.* 2017;7(s1):S51-69. 10.3233/JPD-179005
- Lindström V, Gustafsson G, Sanders LH, et al. Extensive uptake of α -synuclein oligomers in astrocytes results in sustained intracellular deposits and mitochondrial damage. *Mol Cell Neurosci.* 2017;82:143-156. Available from <https://linkinghub.elsevier.com/retrieve/pii/S1044743116301841>
- Liddel SA, Guttenplan KA, Clarke LE, et al. Neurotoxic reactive astrocytes are induced by activated microglia. *Nature.* 2017;541(7638):481-487. Available from <http://www.nature.com/articles/nature21029>
- Yun SP, Kam T-I, Panicker N, et al. Block of A1 astrocyte conversion by microglia is neuroprotective in models of Parkinson's disease. *Nat Med.* 2018;24(7):931-938. Available from <http://www.nature.com/articles/s41591-018-0051-5>
- Moretti R, Morelli ME, Caruso P. Vitamin D in Neurological Diseases: A Rationale for a Pathogenic Impact. *Int J Mol Sci.* 2018;19(8):2245. Available from: <http://www.mdpi.com/1422-0067/19/8/2245>
- Goltzman D, Hendy GN, Karaplis AC, Kremer R, Miao D. Understanding Vitamin D From Mouse Knockout Models. In: *Vitamin D.* Elsevier. 2018;613-631. Available from: <https://linkinghub.elsevier.com/retrieve/pii/B9780128099650000367>
- Eyles DW, Smith S, Kinobe R, Hewison M, McGrath JJ. Distribution of the Vitamin D receptor and 1 α -hydroxylase in human brain. *J Chem Neuroanat.* 2005;29(1):21-30. Available from <https://linkinghub.elsevier.com/retrieve/pii/S0891061804001176>
- Cui X, Gooch H, Petty A, McGrath JJ, Eyles D. Vitamin D and the brain: Genomic and non-genomic actions. *Mol Cell Endocrinol.* 2017;453:131-143. Available from <https://linkinghub.elsevier.com/retrieve/pii/S0303720717303040>
- Luo X, Ou R, Dutta R, Tian Y, Xiong H, Shang H. Association Between Serum Vitamin D Levels and Parkinson's Disease: A Systematic Review and Meta-Analysis. *Front Neurol.* 2018;9:1-10. 10.3389/fneur.2018.00909
- Suzuki M, Yoshioka M, Hashimoto M, et al. Randomized, double-blind, placebo-controlled trial of vitamin D supplementation in Parkinson disease. *Am J Clin Nutr.* 2013;97(5):1004-1013. Available from <https://academic.oup.com/ajcn/article/97/5/1004/4577000>
- Balton C, Griffith LE, Striffler L, et al. Vitamin D, cognition, and dementia: A systematic review and meta-analysis. *Neurology.* 2012;79(13):1397-1405. Available from <http://www.neurology.org/cgi/doi/10.1212/WNL.0b013e31826c197f>
- Llewellyn DJ. Vitamin D and Risk of Cognitive Decline in Elderly Persons. *Arch Intern Med.* 2010;170(13):1135. 10.1001/archinternmed.2010.173
- Peterson AL, Mancini M, Horak FB. The relationship between balance control and vitamin D in Parkinson's disease—a pilot study. *Mov Disord.* 2013;28(8):1133-1137. 10.1002/mds.25405
- Barichella M, Cereda E, Pinelli G, et al. Muscle-targeted nutritional support for rehabilitation in patients with parkinsonian syndrome. *Neurology.* 2019;93(5):e485-e496. 10.1212/WNL.0000000000007858

18. Fasano A, Cereda E, Barichella M, et al. COVID-19 in Parkinson's Disease Patients Living in Lombardy, Italy. *Mov Disord*. 2020;35(7):1089-1093. 10.1002/mds.28176
19. Hughes AJ, Daniel SE, Kilford L, Lees AJ. Accuracy of clinical diagnosis of idiopathic Parkinson's disease: A clinico-pathological study of 100 cases. *J Neurol Neurosurg Psychiatry*. 1992;55:181-184.
20. Hughes AJ, Daniel SE, Lees AJ. Improved accuracy of clinical diagnosis of Lewy body Parkinson's disease. *Neurology*. 2001;57(8):1497-1499. 10.1212/WNL.57.8.1497
21. Alafuzoff I, Ince PG, Arzberger T, et al. Staging/typing of Lewy body related α -synuclein pathology: a study of the BrainNet Europe Consortium. *Acta Neuropathol*. 2009;28(117):635-652. 10.1007/s00401-009-0523-2
22. Mazzetti S, Basellini MJ, Ferri V, et al. α -Synuclein oligomers in skin biopsy of idiopathic and monozygotic twin patients with Parkinson's disease. *Brain*. 2020;143(3):920-931.
23. Landel V, Stephan D, Cui X, Eyles D, Feron F. Differential expression of vitamin D-associated enzymes and receptors in brain cell subtypes. *J Steroid Biochem Mol Biol*. 2018;177:129-134. Available from <https://linkinghub.elsevier.com/retrieve/pii/S096007601730256X>
24. Verkhratsky A, Nedergaard M. Physiology of Astroglia. *Physiol Rev*. 2018;98(1):239-389. 10.1152/physrev.00042.2016
25. Sosunov AA, Wu X, Tsankova NM, Guilfoyle E, McKhann GM, Goldman JE. Phenotypic heterogeneity and plasticity of isocortical and hippocampal astrocytes in the human brain. *J Neurosci*. 2014;34(6):2285-2298. 10.1523/JNEUROSCI.4037-13.2014
26. Braak H, De Vos RAI, Bohl J, Del Tredici K. Gastric α -synuclein immunoreactive inclusions in Meissner's and Auerbach's plexuses in cases staged for Parkinson's disease-related brain pathology. *Neurosci Lett*. 2006;396(1):67-72.
27. Mazzetti S, De Leonardis M, Gagliardi G, et al. Phospho-HDAC6 Gathers Into Protein Aggregates in Parkinson's Disease and Atypical Parkinsonisms. *Front Neurosci*. 2020;14:1-11. 10.3389/fnins.2020.00624/full
28. Cheng X-T, Xie Y-X, Zhou B, Huang N, Farfel-Becker T, Sheng Z-H. Revisiting LAMP1 as a marker for degradative autophagy-lysosomal organelles in the nervous system. *Autophagy*. 2018;14(8):1472-1474. 10.1080/15548627.2018.1482147
29. Calvello R, Cianciulli A, Nicolardi G, et al. Vitamin D Treatment Attenuates Neuroinflammation and Dopaminergic Neurodegeneration in an Animal Model of Parkinson's Disease, Shifting M1 to M2 Microglia Responses. *J Neuroimmune Pharmacol*. 2017;12(2):327-339. 10.1007/s11481-016-9720-7
30. di Domenico A, Carola G, Calatayud C, et al. Patient-Specific iPSC-Derived Astrocytes Contribute to Non-Cell-Autonomous Neurodegeneration in Parkinson's Disease. *Stem Cell Reports*. 2019;12:213-229.
31. Paillusson S, Gomez-Suaga P, Stoica R, et al. α -Synuclein binds to the ER-mitochondria tethering protein VAPB to disrupt Ca²⁺ homeostasis and mitochondrial ATP production. *Acta Neuropathol*. 2017;134(1):129-149. 10.1007/s00401-017-1704-z
32. Garcion E, Wion-Barbot N, Montero-Menei CN, Berger F, Wion D. New clues about vitamin D functions in the nervous system. *Trends Endocrinol Metab*. 2002;13(3):100-105. Available from <https://linkinghub.elsevier.com/retrieve/pii/S1043276001005471>
33. Hribar CA, Cobbold PH, Church FC. Potential Role of Vitamin D in the Elderly to Resist COVID-19 and to Slow Progression of Parkinson's Disease. *Brain Sci*. 2020;10(5):2076-3425. Available from: <https://www.mdpi.com/2076-3425/10/5/284>

SUPPORTING INFORMATION

Additional supporting information may be found in the online version of the article at the publisher's website.

How to cite this article: Mazzetti S, Barichella M, Giampietro F, et al. Astrocytes expressing Vitamin D-activating enzyme identify Parkinson's disease. *CNS Neurosci Ther*. 2022;28: 703-713. doi:[10.1111/cns.13801](https://doi.org/10.1111/cns.13801)