

# Genomic Profiling of Hormone-Naïve Lymph Node Metastases in Patients with Prostate Cancer<sup>1\*</sup>

Pamela L. Paris<sup>\*</sup>, Matthias D. Hofer<sup>†,‡</sup>, Giancarlo Albo<sup>§</sup>, Rainer Kuefer<sup>¶</sup>, Juergen E. Gschwend<sup>¶</sup>, Richard E. Hautmann<sup>¶</sup>, Jane Fridlyand<sup>#</sup>, Jeffrey Simko<sup>\*\*</sup>, Peter R. Carroll<sup>\*</sup>, Mark A. Rubin<sup>†,‡</sup> and Colin Collins<sup>\*</sup>

<sup>\*</sup>Department of Urology, University of California at San Francisco Comprehensive Cancer Center, San Francisco, CA 94115, USA; <sup>†</sup>Brigham and Women's Hospital, Boston, MA 02115, USA; <sup>‡</sup>Harvard Medical School, Boston, MA 02115, USA; <sup>§</sup>Department of Urology, University of Bari, Bari, Italy; <sup>¶</sup>Urologic University Hospital Ulm, Ulm, Germany; <sup>#</sup>Biostatistics Center for Bioinformatics and Molecular Biostatistics, University of California at San Francisco Comprehensive Cancer Center, San Francisco, CA 94115, USA; <sup>\*\*</sup>Department of Pathology, University of California at San Francisco, San Francisco, CA 94115, USA

## Abstract

The progression of organ-confined prostate cancer to metastatic cancer is inevitably fatal. Consequently, identification of structural changes in the genome and associated transcriptional responses that drive this progression is critical to understanding the disease process and the development of biomarkers and therapeutic targets. In this study, whole genome copy number changes in genomes of hormone-naïve lymph node metastases were profiled using array comparative genomic hybridization, and matched primaries were included for a subset. Matched primaries and lymph node metastases showed very similar copy number profiles that are distinct from primary tumors that fail to metastasize.

*Neoplasia* (2006) 8, 1083–1089

**Keywords:** Lymph nodes, prostate cancer, aCGH, metastases, biomarkers.

## Introduction

An estimated 30% of all prostate cancer patients suffer from recurrent disease after undergoing primary treatment (radical prostatectomy or radiation) [1]. Metastatic prostate cancer inevitably progresses to androgen independency, at which point it is essentially incurable. Due to early detection, the 5-year disease-specific survival rate is close to 100% in men with localized prostate cancer, but is only 34% in men with distant metastasis [1]. It appears that a high proportion of men initially presenting with apparently localized disease have undetectable metastases that eventually progress to life-threatening metastatic tumors. Therefore, developing diagnostic and therapeutic approaches for targeting metastatic disease holds considerable potential for improving the quality of life, treatment modalities, and survival rates of a significant proportion of patients with prostate cancer.

Prostate cancer often migrates through the lymphatic route, depositing tumor cells into pelvic lymph nodes. There have not been many publications to date on the genetic

makeup of lymph node metastases of prostate cancer [2,3]. This is partly due to the fact that lymph node metastases, particular those that are hormone-naïve, are hard to obtain. In the United States, a patient diagnosed with prostate cancer with clinical lymph node involvement rarely undergoes radical prostatectomy. We analyzed five hormone-naïve lymph node (HNLN) metastases and two matching sets of primary prostate cancers and their respective HNLN metastases. One matched set consisted of a primary prostate tumor and lymph node metastasis from a unilateral metastatic case, and the second consisted of a primary prostate tumor with bilateral lymph node metastases. Array comparative genomic hybridization (aCGH) was performed on all eight lymph node tumors, as well as on two primaries. We report our genomewide characterization of this set of tumors, highlighting frequent copy number aberrations (CNAs).

## Materials and Methods

### Tumor Samples

Five lymph nodes were obtained through a collaboration with the University of Ulm (Ulm, Germany). Fifteen-micron sections for each fresh frozen sample were sent. Hematoxylin–eosin stainings were reviewed by one pathologist (M.A.R.). Microdissection was not necessary due to the high percentage of tumors in the sections. Tumor tissue was directly placed into proteinase K (PK) cell lysis buffer (Promega, Madison, WI) with

Abbreviations: *FABP5*, fatty acid-binding protein 5; *TPD52*, tumor protein D52; *NGFR*, nerve growth factor receptor; *MYC*, myelocytomatosis viral oncogene homolog; *PIAS3*, protein inhibitor of activated STAT protein 3; *ARL2*, ADP ribosylation factor-like 2; *SNX15*, sorting nexin 15; *MEN1*, multiple endocrine neoplasia 1; *RPS3*, ribosomal protein S3; *CBX8*, chromobox homolog 8; *CBX4*, chromobox homolog 4

Address all correspondence to: Colin Collins, UCSF Box 0808, San Francisco, CA 94143.

E-mail: collins@cc.ucsf.edu

<sup>†</sup>This work was supported by the University of California at San Francisco Prostate Cancer SPORE, National Institutes of Health grant P50CA89520.

<sup>\*</sup>This article refers to supplementary material, which is designated by W (i.e., Table W1) and is available online at [www.bcdecker.com](http://www.bcdecker.com).

Received 30 May 2006; Revised 5 September 2006; Accepted 30 October 2006.

Copyright © 2006 Neoplasia Press, Inc. All rights reserved 1522-8002/06/\$25.00  
DOI 10.1593/neo.06421

20  $\mu$ l of PK and then incubated at 55 °C. An additional 20  $\mu$ l of PK was added twice daily for 2 to 3 days. DNA was extracted using Promega's Wizard DNA purification kit. DNA was cleaned by two phenol/chloroform/isoamyl alcohol (25:24:1) extractions and then purified using 2-ml Eppendorf Phase Lock Gel Light tubes (Eppendorf, Westbury, NY). Finally, DNA was ethanol-precipitated with ammonium acetate, resuspended in 25 to 50  $\mu$ l of 1  $\times$  Tris-EDTA (TE), and stored at 4 °C. RNA was isolated by macrodissection for matched primary and HNLN cases (PR1263 and PR1264) using the RNeasy kit (Qiagen, Valencia, CA). *TaqMan* assay was carried out at the University of California at San Francisco (UCSF) Comprehensive Cancer Center's Genome Core.

#### aCGH

Human version 2.0 BAC arrays were purchased from the UCSF Array Core. Each array consists of 2460 BAC clones on chromium slides spotted in triplicate [4]. The resolution is approximately 1.4 Mb. We followed our published hybridization protocol [5].

#### aCGH Statistical Analysis

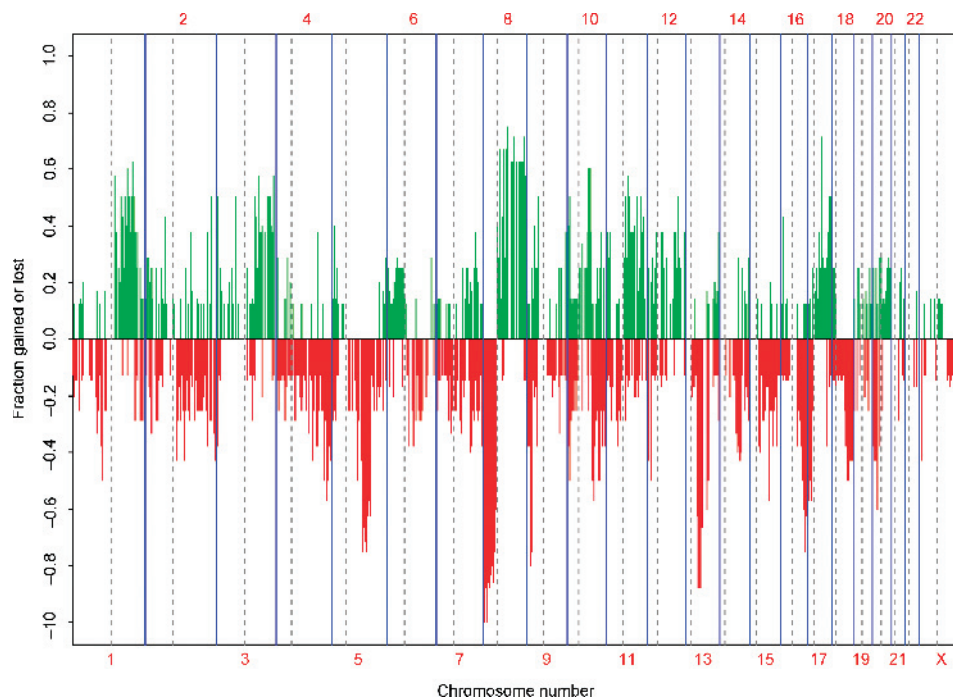
Tumor/reference fluorescence intensity ratios were converted to  $\log_2$  domain, and replicate spots were averaged. Observed  $\log_2$  ratios were excluded if there were fewer than two (of three) usable replicate spots, or if the standard deviation of replicates was  $> 0.2$ . Each array was normalized to have a median  $\log_2$  ratio of 0. To identify gained and lost clones in individual samples, sample-specific thresholds were constructed [6,7]. GEMCaP clones with  $\log_2$  ratios above or below ( $\pm$ ) a tumor's threshold were considered gained or lost, respectively. A Microsoft Excel (Seattle, WA)

macro written in our laboratory, was used to determine the percentage of aberrant GEMCaP loci based on inputted aCGH data and corresponding tumor-based threshold (TBT) for a given patient. All tumor aCGH data were analyzed with this macro. Frequent CNAs were plotted only using clones that were present in  $\geq 50\%$  of samples.

#### Results

Whole genome aCGH was performed on eight HNLN tumors. Figure 1 displays the frequency of copy number changes across the whole genome for all eight hormone-naïve tumors. The numerical frequency for aberration, along with BAC clone names for this set of tumors, is provided in Table W1. Sixty-three percent of the clones with increased copy number that were aberrant at a frequency of  $\geq 50\%$  resided on chromosome 8. Similarly, 57% of frequently deleted clones (frequency of  $> 50\%$ ) mapped to chromosome 8. A summary highlighting some of the frequent (frequency of  $\geq 50\%$ ) CNAs identified by aCGH is shown in Table 1. In addition, a list of candidate genes that directly map to, or near, an aberrant clone is provided in Table 1.

aCGH was also performed on two primary tumors possessing matched HNLN tumors. The copy number profiles of matched primary and lymph node cases are shown in Figure 2. The median Pearson correlation between primaries and their matched metastasis was 0.88, as opposed to 0.21 for unrelated samples. The smallest correlation among related samples was 0.85, and the largest correlation among unrelated samples was 0.49. Note that the direct test comparing distributions of correlations between matched and unmatched samples leads to  $P < 1e^{-04}$  (Wilcoxon rank sum



**Figure 1.** Frequency plot for eight HNLN tumors. Green bars represent gains; red bars represent losses.

**Table 1.** Selection of Frequent ( $\geq 50\%$ ) CNAs in HNLN Tumors.

(A)			
Clone	Frequency of CNA (Gain) (%)	Locus	Candidate Genes
RP11-214E11	75	8q21.13	<i>TPD52</i>
RP5-1071I14*	71	17q21.33	<i>NGFR</i>
RP11-80C11	71	8q21.13	<i>FABP5</i>
RP11-237F24	62	8q24.21	<i>MYC</i>
RP11-30I17	57	1q21.1	<i>PIAS3</i>
RP11-179B9	50	3p14.1	<i>Prickle2</i>
RP11-1146E5*	50	3q26.2	<i>EVI1</i>
RP11-114M1*	50	3q26.32	<i>IRA1</i> (~ 500 kb away)
RP11-548G17	50	11q13.1	<i>ARL2, SNX15, ZFP11</i>
RP11-168B13	50	11q13.4–13.5	<i>RPS3</i>
RP11-46E14*	50	17q25.3	<i>CBX8, CBX4</i>

(B)			
Clone	Frequency of CNA (Loss) (%)	Locus	Candidate Genes
RP11-246G24	100	8p23.2	<i>MYO2</i> (~ 200 kb away)
GS1-77L23	88	7q32.1	<i>LEP</i>
RP11-92C1	88	8p22	<i>DLC1</i>
RP11-252K12	88	8p23.1	<i>C8orf21</i>
RP11-122N11	88	8p23.1	<i>SPAG11</i>
RP11-287P18	88	8p23.1	<i>SPAG11, DEFBs</i>
RP11-112G9	88	8p23.1	<i>MSRA</i>
RP11-17I11	88	13q14.11	<i>DNAJD1</i>
RP11-21H9	88	13q14.11	<i>TNFSF11</i>
RP11-217H23*	88	13q14.3	<i>GTF2F2</i>

\*GEMCaP clone.

test). Figure 3 shows a heat map of copy number changes across the genome of each tumor studied. The corresponding dendrogram also shows clustering of related samples. Aggregated hierarchical clustering with Ward method and Pearson correlation was used as a measure of similarity.

We compared the genomic profiles of the eight HNLN metastases to our existing aCGH database, which consists of 19 distant metastatic tumors, 12 primary tumors that progressed by prostate-specific antigen failure and confirmed bone metastases, and 32 primary tumors that did not relapse biochemically. In regards to gains, four clones were gained with statistical significance ( $P < .05$ ) in  $> 20\%$  of HNLN metastases, distant metastases, and primaries that progressed, but were gained in  $< 20\%$  of nonprogressors. Fourteen clones met this criterion for losses. Clone names and their corresponding CNA frequencies are listed in Table 2.

To evaluate some of the candidate genes identified in this study, existing and unpublished Affymetrix gene expression results for three lymph node tumors (HNLN8, HNLN12, and HNLN13) were queried. Gene expression for unmatched primary tumors was used for comparison. The following genes mapping to regions of copy number gain listed in Table 1 were represented on Affymetrix array: fatty acid-binding protein 5 (*FABP5*), tumor protein D52 (*TPD52*), nerve growth factor receptor (*NGFR*), myelocytomatosis viral oncogene homolog (*MYC*), protein inhibitor of activated STAT protein 3 (*PIAS3*), ADP ribosylation factor-like 2 (*ARL2*), sorting nexin 15 (*SNX15*), multiple endocrine neoplasia 1

(*MEN1*), ribosomal protein S3 (*RPS3*), chromobox homolog 8 (*CBX8*), and chromobox homolog 4 (*CBX4*). Table 3 shows the combined aCGH and expression results for HNLN8, HNLN12, and HNLN13. We further evaluated *FABP5* with *TaqMan* using RNA from two matched primary HNLN cases (PR1263 and PR1264) that were not included in the Affymetrix gene expression study. *FABP5* was selected because it was differentially and highly expressed in HNLN metastases compared to primaries (Table 3). There was a trend toward the upregulation of *FABP5* in HNLNs in the case with concordant copy number change (PR1264HNLN), as well as in the case without it (PR1263) (Figure 4).

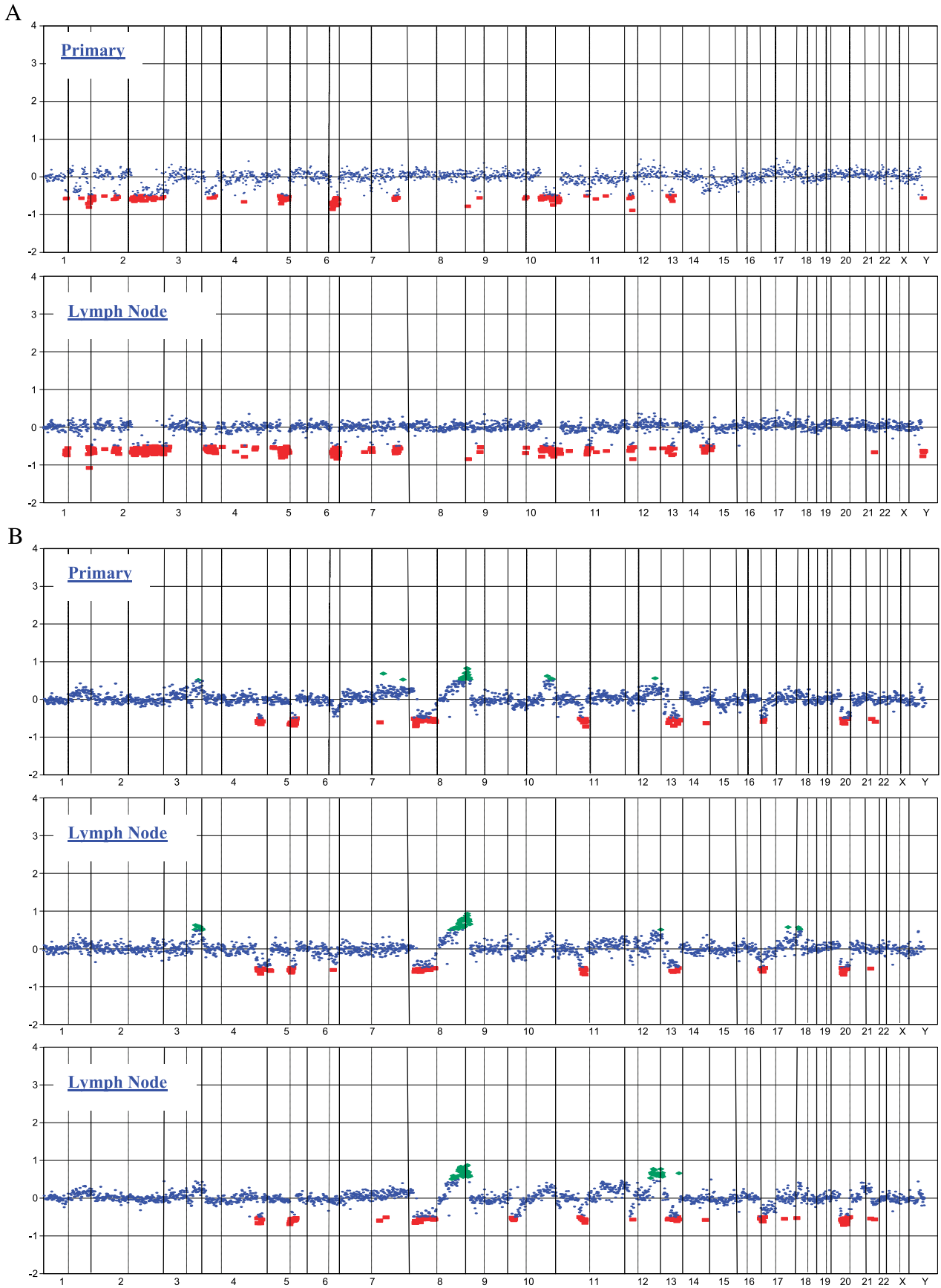
## Discussion

Zitzelsberger et al. [3] performed CGH on a set of five HNLN metastases. A direct comparison with our aCGH results could not be made because CGH has a lower resolution. However, based on their published ideogram, they also observed gains involving 2p, 8q, 9q, 17, 20, and X, and losses involving 2p, 2q, 3p, 3q, 4q, 8p, 11q, 13q, and X (Figure 1).

The majority of frequently deleted metastasis-associated regions in our tumor set map to chromosome 8p, which has been documented to be involved in prostate cancer [6,8–12]. In a study of 64 primary tumors, we found 8p loss to be associated with advanced stage disease ( $pT \geq 3$ ) [6]. Tumor–node–metastasis stage  $\geq 3$  indicates extracapsular extension and invasion of seminal vesicles or adjacent structures [13].

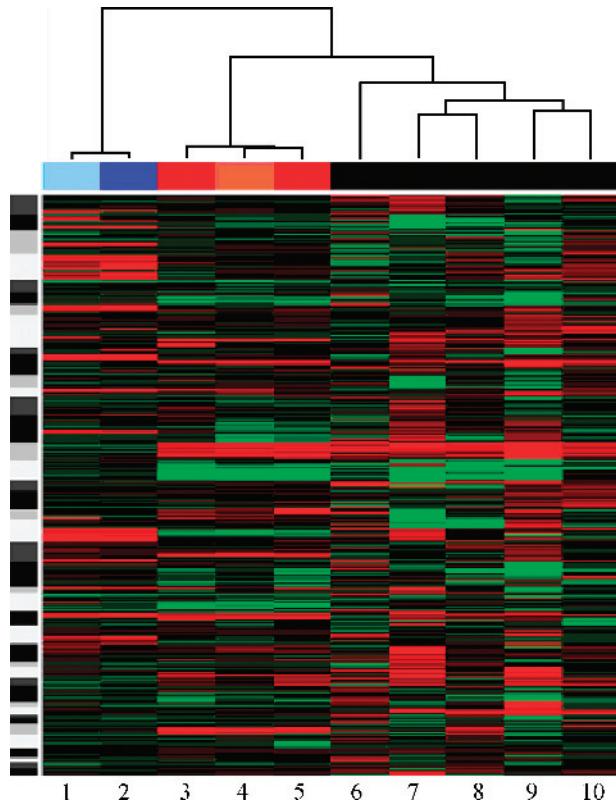
When comparing expression levels in HNLNs to those in primary tumors, assuming that normal expression corresponds to a value of  $\sim 50$ , copy number gain corresponded to increased expression for all genes except *NGFR* and chromobox homologs (Table 3). *SNX15* showed only a slight increase in expression for the HNLN sample with copy number gain at that locus. Some genes were upregulated in primary tumors and HNLN metastatic tumors, namely, *TPD52*, *FABP5*, *MYC*, *MEN1*, and *RPS3*. *MYC* and *FABP5* were the only genes queried that showed a large increase in expression for the HNLNs compared to high levels in primary tumors. We further validated *FABP5* upregulation in matched primary HNLN cases (PR1263 and PR1264) using *TaqMan* (Figure 4). The HNLNs (HNLN8 and HNLN12) with high expression of *TPD52* also had increased copy number at that locus. Interestingly, the nodal tumor HNLN13 did not show copy number gain at the *TPD52* locus, but had increased expression of *TPD52*, suggesting an independent mechanism leading to aberrant *TPD52* gene expression. This provides further evidence of the important role that *TPD52* may play in cancer [14]. The trend of expression change without corresponding copy number change was also observed for *RPS3*, which has been shown to be upregulated in colon cancer [15], and for the *ARL2* and *SNX15* genes, which both map to the 11q13 CNA locus.

Several putative metastasis-related genes that were identified in this study and validated by expression studies have been previously reported to be involved in prostate cancer. Two independent expression studies focusing on *FABP5* found it to be upregulated in prostate cancer relative to normal



**Figure 2.** aCGH whole genome CNA profiles for the two matched primary and lymph node tumors. The primary case is displayed first for each set. (A) Unilateral case. (B) Bilateral case.





**Figure 3.** Heat map for all eight HNLN tumors and two primary prostate tumors. Red represents loss; green denotes copy number gain. 1 = PR1263-primary; 2 = PR1263HNLN; 3 = PR1264leftHNLN; 4 = PR1264primary; 5 = PR1264rightHNLN; 6 = HNLN13; 7 = HNLN10; 8 = HNLN12; 9 = HNLN8; 10 = HNLN11.

**Table 3.** Expression Levels in a Subset of HNLN Metastases for Genes Mapping to Frequent CNAs in HNLN Tumors.

Gene	Mean			
	Primaries (n = 15)	HNLN8	HNLN12	HNLN13
<i>TPD52</i>	408.76	338.43	284.87	265.83
<i>NGFR</i>	38.72	42.54	28.30	35.25
<i>FABP5</i>	671.08	2990.93	1776.89	35.46
<i>MYC</i>	231.68	342.6	1232.99	263.41
<i>PIAS3</i>	93.93	55.54	38.79	76.69
<i>ARL2</i>	53.46	186.49	92.27	32.53
<i>SNX15</i>	84.2	95.27	86.63	62.86
<i>MEN1</i>	113.92	225.55	155.01	120.52
<i>RPS3</i>	5060.5	5855.31	5719.49	5644.25
<i>CBX4</i>	51.82	59.67	43.51	60.83
<i>CBX8</i>	26.35	43.25	28.32	35.30

Corresponding copy number data are also codified for reference. Gray represents copy number gain, and white indicates that normal copy number was observed. An expression level of ~ 50 is considered normal.

prostate [16,17]. In addition, a query of two whole transcriptome studies showed *FABP5* to be upregulated in metastatic tumors (including lymph nodes) compared to primary and normal prostate tissues [2,18]. *FABP5* has been proposed to be a metastasis-inducing gene [17,19]. Previous work has shown that *FABP5* acts by upregulating vascular endothelial growth factor to induce invasion *in vitro* and metastasis *in vivo* [16,19]. The candidate oncogene *TPD52* has been found to be upregulated in prostate cancer at DNA, RNA, and protein levels [14]. The *ARL2* and *SNX15* genes map ~ 200 kb from *MEN1*. We previously reported *MEN1* as

**Table 2.** CNAs More Frequently Found in Primaries That Progressed, and Metastases Versus Nonprogressors.

(A)							
Clone Mapt 5.0	Locus	Gene	Gains (%)				P
			Primary Progressors (n = 12)	Nonprogressors (n = 32)	Harvard Metastases (n = 19)	HNLN (n = 8)	
RP11-1146E5*	3q26.2	<i>EVI1</i>	20	0	39	50	.0003
RP4-693L23*	11p15.5	<i>p57</i>	45	14	53	38	.008
RP11-46E14*	17q25.3	<i>CBX8, CBX4</i>	27	15	56	38	.03
RP11-114M1*	3q26.32	<i>IRA1</i>	45	13	42	50	.01
(B)							
Clone Mapt 5.0	Locus	Gene	Deletions (%)				P
			Primary Progressors (n = 12)	Nonprogressors (n = 32)	Harvard Metastases (n = 19)	HNLN (n = 8)	
RP11-232J22*	8p21.2	<i>BNIP3L</i>	27	11	53	75	.0013
CTD-2015D3*	8p21.2	<i>ADRA1A</i>	25	17	63	57	.0013
RP11-5713*	8p12	<i>NRG1</i>	36	6	56	71	.0001
RP11-262I23	8p11.22-p11.21	<i>INDO</i>	27	3	24	50	.0038
RP11-28L24*	6q21	<i>LAMA4</i>	36	7	35	25	.015
RP11-262B7	8p23.1	Not in database	25	13	35	88	.0145
CTD-2173J2*	13q14.2	<i>RB</i>	25	3	61	38	.0001
CTD-2079J2*	5q21.3	<i>FER</i>	45	13	29	71	.0133
RP11-73N22	5q23.1	No gene	36	8	21	63	.0185
RP11-115L24	5q21.2	No gene	45	14	33	75	.0081
RP11-76B12*	8p21.2	<i>DOCK5</i>	25	13	50	50	.015
RP11-70L1	8p21.2	<i>GNRH1, KCTD9</i>	25	19	53	63	.0228
RP11-217H23	13q14.13	<i>GTF2F2</i>	27	3	53	88	.0001
RP11-241I4	8p23.1	<i>MSRA</i>	30	12	37	88	.0059

\*GEMCaP clone.

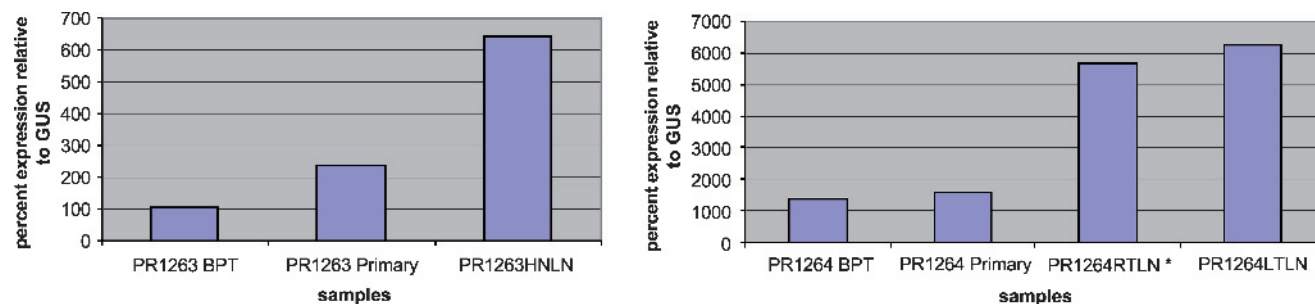


Figure 4. FABP5 TaqMan results for matched primary and HNLN cases. BPT = benign prostatic tissue. \*A sample with aCGH copy number gain.

a candidate oncogene in prostate cancer [6]. More specifically, copy number gain at the 11q13.1 locus associates with cases that fail biochemically following radical prostatectomy. *MEN1* was found, with expression data, to be upregulated in three lymph nodes (HNLN8, HNLN12, and HNLN13), as well as in primary tumors. Only one of three nodes (HNLN8) had corresponding copy number gain. This stresses the importance of the role that *MEN1* might play in prostate cancer. In addition, a query in the Oncomine expression database (<http://www.oncomine.org>) for upregulated genes provided similar results in Table 3. The genes *FABP5*, *TPD52*, *MYC*, *RPS3*, and *SNX15* had expression data available for HNLNs. Similar to our findings, these genes showed a trend toward increased expression in HNLNs [2].

We recently reported a set of 39 biomarkers, which we termed GEMCaP, that corresponds to regions of the human genome that are more frequently altered in primary prostate tumors recurring after surgical removal, as well as in actual metastases [6]. GEMCaP consists of 16 amplified loci and 23 deleted loci. Four of the amplified GEMCaP loci were among the frequent CNAs in this study (Table 1). We have previously demonstrated that when > 20% of the GEMCaP loci are altered, patients are at high risk for recurrence following radical prostatectomy [20]. The eight HNLNs had copy number changes at 5%, 27%, 34%, 45%, 46%, 54%, 58%, and 60% of the GEMCaP loci. Therefore, seven of eight HNLNs fitted our criteria for an aggressive genotype. The entire GEMCaP results are supplied as Table W1. The whole genome aCGH profile for the HNLN sample with only a 5% GEMCaP score possessed primarily deletions. We have observed this genotype in other sets of primary and metastatic tumors (data not shown). This deletion genotype appears to represent a small fraction (< 10%) of prostate tumors. In our aCGH database query (Table 2), all four clones that were more frequently gained in metastatic tumors and primaries that progressed were GEMCaP clones. A similar analysis for deletions resulted in seven GEMCaP clones.

Our results show a high degree of concordance between the genomic copy number profiles of matched primary and metastasis cases. This is similar to what we observed in a cohort of unmatched primaries and metastatic tumors [6]. A CGH study by Zitzelsberger et al. [3] showed common changes for matched primaries and HNLN cases, but it only listed gains of 9q and 16 and loss of 13q as CNAs in common. Two previous reports that studied primaries and matched

lymph node metastases by fluorescence *in situ* hybridization (FISH) reported that chromosomal changes in lymph node tumors resembled those from primary tumors [21,22]. Even though FISH studies included only selected regions on chromosomes 7, 8, 10, 12, and 17, this is in line with our observations.

This study emphasizes the importance of studying metastatic tumors, as well as primary tumors. Biomarkers of aggressive disease were found in HNLN metastatic lesions. Genomic profiles of matched primaries and lymph node metastases were found to be very similar. Studies such as these can highlight genomic changes in primary tumors that can be used for the early detection of aggressive tumors and, conversely, for the identification of patients who can safely elect active surveillance. In addition, these types of study can identify drug targets with associated biomarkers.

#### Acknowledgements

We would like to thank Lars Schmitt (UCSF Pathology Department) for assistance with UCSF cases, and Shivarvanjani Sridharan and Yasuko Kobayashi for help with manuscript revisions.

#### References

- [1] Jemal A, Tiwari RC, Murray T, Ghafoor A, Samuels A, Ward E, Feuer EJ, and Thun MJ (2004). Cancer statistics, 2004. *CA Cancer J Clin* **54**, 8–29.
- [2] Lapointe J, Li C, Higgins JP, van de Rijn M, Bair E, Montgomery K, Ferrari M, Egevad L, Rayford W, Bergerheim U, et al. (2004). Gene expression profiling identifies clinically relevant subtypes of prostate cancer. *Proc Natl Acad Sci USA* **101**, 811–816.
- [3] Zitzelsberger H, Engert D, Walch A, Kulka U, Aubele M, Hofler H, Bauchinger M, and Werner M (2001). Chromosomal changes during development and progression of prostate adenocarcinomas. *Br J Cancer* **84**, 202–208.
- [4] Pinkel D, Segraves R, Sudar D, Clark S, Poole I, Kowbel D, Collins C, Kuo WL, Chen C, Zhai Y, et al. (1998). High resolution analysis of DNA copy number variation using comparative genomic hybridization to microarrays. *Nat Genet* **20**, 207–211.
- [5] Paris PL, Albertson DG, Alers JC, Andaya A, Carroll P, Fridlyand J, Jain AN, Kamkar S, Kowbel D, Krijtenburg PJ, et al. (2003). High-resolution analysis of paraffin-embedded and formalin-fixed prostate tumors using comparative genomic hybridization to genomic microarrays. *Am J Pathol* **162**, 763–770.
- [6] Paris PL, Andaya A, Fridlyand J, Jain AN, Weinberg V, Kowbel D, Brebner JH, Simko J, Watson JE, Volik S, et al. (2004). Whole genome scanning identifies genotypes associated with recurrence and metastasis in prostate tumors. *Hum Mol Genet* **13**, 1303–1313.
- [7] Fridlyand J, Snijders AM, Pinkel D, Albertson DG, and Jain A (2004).

- Application of Hidden Markov Models to the analysis of the array CGH data. *J Multivar Anal (Spec Genomic Issue)* **90**, 132–153.
- [8] Swalwell JI, Vocke CD, Yang Y, Walker JR, Grouse L, Myers SH, Gillespie JW, Bostwick DG, Duray PH, Linehan WM, et al. (2002). Determination of a minimal deletion interval on chromosome band 8p21 in sporadic prostate cancer. *Genes Chromosomes Cancer* **33**, 201–205.
- [9] Oba K, Matsuyama H, Yoshihiro S, Kishi F, Takahashi M, Tsukamoto M, Kinjo M, Sagiyama K, and Naito K (2001). Two putative tumor suppressor genes on chromosome arm 8p may play different roles in prostate cancer. *Cancer Genet Cytogenet* **124**, 20–26.
- [10] Washburn JG, Wojno KJ, Dey J, Powell IJ, and Macoska JA (2000). 8pter-p23 deletion is associated with racial differences in prostate cancer outcome. *Clin Cancer Res* **6**, 4647–4652.
- [11] Macoska JA, Paris P, Collins C, Andaya A, Beheshti B, Chaib H, Kant R, Begley L, MacDonald JW, and Squire JA (2004). Evolution of 8p loss in transformed human prostate epithelial cells. *Cancer Genet Cytogenet* **154**, 36–43.
- [12] Tsuchiya N, Slezak JM, Lieber MM, Bergstralh EJ, and Jenkins RB (2002). Clinical significance of alterations of chromosome 8 detected by fluorescence *in situ* hybridization analysis in pathologic organ-confined prostate cancer. *Genes Chromosomes Cancer* **34**, 363–371.
- [13] Hermanek P, Hutter RVP, and Sobin LH (1997). TNM Atlas IUAC Springer, New York.
- [14] Rubin MA, Varambally S, Beroukhi R, Tomlins SA, Rhodes DR, Paris PL, Hofer MD, Storz-Schweizer M, Kuefer R, Fletcher JA, et al. (2004). Overexpression, amplification, and androgen regulation of *TPD52* in prostate cancer. *Cancer Res* **64**, 3814–3822.
- [15] Pogue-Geile K, Geiser JR, Shu M, Miller C, Wool IG, Meisler AI, and Pipas JM (1991). Ribosomal protein genes are overexpressed in colorectal cancer: isolation of a cDNA clone encoding the human S3 ribosomal protein. *Mol Cell Biol* **11**, 3842–3849.
- [16] Adamson J, Morgan EA, Beesley C, Mei Y, Foster CS, Fujii H, Rudland PS, Smith PH, and Ke Y (2003). High-level expression of cutaneous fatty acid-binding protein in prostatic carcinomas and its effect on tumorigenicity. *Oncogene* **22**, 2739–2749.
- [17] Jing C, Beesley C, Foster CS, Rudland PS, Fujii H, Ono T, Chen H, Smith PH, and Ke Y (2000). Identification of the messenger RNA for human cutaneous fatty acid-binding protein as a metastasis inducer. *Cancer Res* **60**, 2390–2398.
- [18] Yu YP, Landsittel D, Jing L, Nelson J, Ren B, Liu L, McDonald C, Thomas R, Dhir R, Finkelstein S, et al. (2004). Gene expression alterations in prostate cancer predicting tumor aggression and preceding development of malignancy. *J Clin Oncol* **22**, 2790–2799.
- [19] Jing C, Beesley C, Foster CS, Chen H, Rudland PS, West DC, Fujii H, Smith PH, and Ke Y (2001). Human cutaneous fatty acid-binding protein induces metastasis by up-regulating the expression of vascular endothelial growth factor gene in rat Rama 37 model cells. *Cancer Res* **61**, 4357–4364.
- [20] Paris PL, Weinberg V, Simko J, Andaya A, Albo G, Rubin MA, Carroll PR, and Collins C (2005). Preliminary evaluation of prostate cancer metastatic risk biomarkers. *Int J Biol Markers* **20**, 141–145.
- [21] Qian J, Hirasawa K, Bostwick DG, Bergstralh EJ, Slezak JM, Anderl KL, Borell TJ, Lieber MM, and Jenkins RB (2002). Loss of p53 and c-myc overrepresentation in stage T(2–3)N(1–3)M(0) prostate cancer are potential markers for cancer progression. *Mod Pathol* **15**, 35–44.
- [22] Alcaraz A, Corral JM, Ribal MJ, Mallofre C, Mengual L, Carrio A, Gil-Vernet Sedo JM, and Villavicencio H (2004). Fluorescence *in situ* hybridization analysis of matched primary tumour and lymph-node metastasis of D1 (pT<sub>2–3</sub>pN<sub>1</sub>M<sub>0</sub>) prostate cancer. *BJU Int* **94**, 407–411.

**Table W1.** Frequency of Copy Number Changes for 8 Hormone-Naïve Lymph Node Metastases.

Clone	kb	Position	Chrom	NumPresent.All	NumGain.All	NumLost.All	PropPresent.All	PropGain.All	PropLost.All
RP11-108H14	37073	484	4	7	0	0	0.88	0	0
RP11-5O2	102605	1718	12	8	4	0	1	0.5	0
RP11-66H6	11003	1959	16	7	0	1	0.88	0	0.14
RP11-107L14	2535	2221	20	5	0	1	0.62	0	0.2
RP11-40P23	87879	1858	14	6	1	1	0.75	0.17	0.17
RP11-73G2	56509	1981	16	6	0	0	0.75	0	0
RP11-51H8	168854	601	4	8	0	2	1	0	0.25
RP11-89J2	124495	1732	12	8	3	1	1	0.38	0.12
RP11-58M3	71389	2001	16	8	0	2	1	0	0.25
RP11-47D7	11611	1464	11	8	0	1	1	0	0.12
RP11-109L8	65016	1689	12	8	0	1	1	0	0.12
RP11-22I14	57076	1122	8	4	1	0	0.5	0.25	0
RP11-145O12	61602	1838	14	6	0	1	0.75	0	0.17
CTD-2014B13	100810	403	3	7	1	1	0.88	0.14	0.14
RP11-141F8	105025	1722	12	7	1	0	0.88	0.14	0
RP11-36N1	71706	2002	16	7	0	2	0.88	0	0.29
RP11-34J24	55242	919	7	8	0	1	1	0	0.12
RP11-54O15	93007	1266	9	8	0	1	1	0	0.12
RP11-206J4	62917	1841	14	7	0	1	0.88	0	0.14
RP11-49N21	19727	866	7	8	0	0	1	0	0
RP11-5K16	142054	577	4	5	0	0	0.62	0	0
RP11-29C11	39869	2069	17	5	1	0	0.62	0.2	0
RP11-275J17	185293	621	4	8	0	1	1	0	0.12
RP11-64I2	39270	892	7	8	0	0	1	0	0
RP11-101N17	120664	557	4	8	0	0	1	0	0
RP11-9M20	43736	2075	17	6	0	0	0.75	0	0
CTD-2094H4	16436	762	6	8	1	0	1	0.12	0
RMC01P52	39774	34	1	8	0	0	1	0	0
RP11-268H17	39398	2068	17	8	0	0	1	0	0
CTD-2105I3	17511	1062	8	7	0	3	0.88	0	0.43
RP11-79N22	18622	466	4	6	0	0	0.75	0	0
RP11-270O2	14930	2376	23	4	0	0	0.5	0	0
RP11-83L17	26923	2329	21	4	0	0	0.5	0	0
RP11-49M7	91474	542	4	8	0	1	1	0	0.12
RP11-39E13	40179	2389	23	4	0	0	0.5	0	0
RP11-124D1	47924	2287	20	6	1	0	0.75	0.17	0
CTD-2043O8	47334	1665	12	6	0	1	0.75	0	0.17
RP1-14I12	23232	1884	15	7	1	0	0.88	0.14	0
CTC-296K1	43333	2074	17	5	1	0	0.62	0.2	0
RP11-75H24	58500	1538	11	8	0	0	1	0	0
RP1-95H6	2765	2033	17	4	0	0	0.5	0	0
CTD-2259P11	41660	2071	17	7	0	0	0.88	0	0
RP11-232J22	26282	1079	8	8	0	6	1	0	0.75
GS-185O2	49140	2156	18	8	0	3	1	0	0.38
RP11-111O5	4262	4	1	5	0	1	0.62	0	0.2
RP11-813J5	9498	7	1	3	0	0	0.38	0	0
RP11-350H23	5869	148	2	4	0	0	0.5	0	0
CTD-2271H24	50670	2205	19	8	0	0	1	0	0
RP11-184N12	167345	96	1	8	2	0	1	0.25	0
CTD-2003M22	68630	229	2	8	0	0	1	0	0
RP11-17D23	61500	217	2	6	0	1	0.75	0	0.17
RP11-246J15	199369	112	1	8	4	0	1	0.5	0
CTB-138N2	139695	423	3	4	0	0	0.5	0	0
RP11-270G18	190503	316	2	7	0	1	0.88	0	0.14
GS1-35M23	83581	946	7	6	0	2	0.75	0	0.33
CTD-2020N9	109812	1287	9	8	0	0	1	0	0
RP11-69O6	122083	263	2	7	0	1	0.88	0	0.14
RMC20P058	40437	2268	20	6	0	0	0.75	0	0
RP11-95J4	111201	1289	9	6	0	0	0.75	0	0
CTD-2110H9	81611	1937	15	7	0	1	0.88	0	0.14
RP11-94E6	33747	659	5	4	0	0	0.5	0	0
RP11-8D10	80348	1247	9	8	0	1	1	0	0.12
CTD-2236H16	99516	2411	23	6	0	1	0.75	0	0.17
RP11-163H6	172970	438	3	6	3	0	0.75	0.5	0
RP11-9I18	88624	1260	9	8	0	1	1	0	0.12
CTD-2177J24	54012	2090	17	7	0	0	0.88	0	0
RP11-560C7	23120	173	2	5	0	0	0.62	0	0
RP11-51D11	179290	750	5	8	0	1	1	0	0.12
RP1-117G9	72883	935	7	8	0	0	1	0	0
RP11-306N14	24594	176	2	8	0	0	1	0	0
RP11-283O4	33695	1504	11	5	0	1	0.62	0	0.2
RP11-165O14	5964	1201	9	8	0	3	1	0	0.38
RP11-94K4	75202	515	4	8	0	0	1	0	0



Table W1. (continued)

Clone	kb	Position	Chrom	NumPresent.All	NumGain.All	NumLost.All	PropPresent.All	PropGain.All	PropLost.All
RP11-219O3	36373	1512	11	8	0	2	1	0	0.25
RP11-183B1	101567	550	4	8	0	2	1	0	0.25
CTB-146A2	4360	849	7	7	0	1	0.88	0	0.14
CTD-2027I18	150092	1026	7	6	0	0	0.75	0	0
RP11-65C15	84018	1253	9	8	0	1	1	0	0.12
RP11-53C3	26255	1657	12	7	1	1	0.88	0.14	0.14
RP11-12L9	111910	979	7	7	0	1	0.88	0	0.14
RP11-49G2	22094	1654	12	8	1	1	1	0.12	0.12
CTC-437H15	70009	1566	11	8	3	1	1	0.38	0.12
RP11-156E22	65768	1845	14	7	2	2	0.88	0.29	0.29
CTB-65D18	21958	1215	9	8	1	0	1	0.12	0
RP11-86O9	98058	1871	14	5	0	0	0.62	0	0
RP1-44H16	0	1447	11	8	2	0	1	0.25	0
GS1-9J21	133332	1006	7	7	1	1	0.88	0.14	0.14
RP11-172C21	54558	2306	20	5	0	0	0.62	0	0
GS1-225F6	154000	2433	23	8	0	0	1	0	0
RP11-174L5	14736	1649	12	8	1	2	1	0.12	0.25
RP11-170H2	12616	1468	11	8	0	0	1	0	0
CTD-2020E14	31264	1089	8	7	0	6	0.88	0	0.86
RP11-192A12	38668	33	1	6	0	0	0.75	0	0
GS1-42C19	5757	850	7	7	0	1	0.88	0	0.14
RP11-97N5	133683	2423	23	8	1	1	1	0.12	0.12
RP11-77E11	120497	1425	10	8	0	2	1	0	0.25
CTC-574G24	141243	1019	7	7	1	2	0.88	0.14	0.29
CTD-2101H1	522	1448	11	8	0	1	1	0	0.12
RP11-284E5	191656	319	2	8	0	1	1	0	0.12
RP11-125O21	99284	1153	8	8	5	0	1	0.62	0
GS-108B23	43030	2274	20	8	0	0	1	0	0
CTD-2010C4	64641	50	1	7	0	1	0.88	0	0.14
RP11-53F2	29422	477	4	6	0	1	0.75	0	0.17
GS1-240H2	71275	932	7	8	0	1	1	0	0.12
CTD-2118L22	151112	724	5	6	0	1	0.75	0	0.17
RP11-120N14	70364	1130	8	7	2	0	0.88	0.29	0
RP11-29N19	75120	1852	14	8	0	2	1	0	0.25
RP11-170O16	12777	1962	16	8	0	1	1	0	0.12
RP11-57G7	31711	2259	20	8	0	2	1	0	0.25
RP11-73G16	153406	590	4	8	0	1	1	0	0.12
RP11-11E14	58468	1984	16	8	0	2	1	0	0.25
RP11-41G4	163266	598	4	8	0	2	1	0	0.25
RP11-92P22	74053	1695	12	8	0	0	1	0	0
RP11-27D1	75107	2003	16	5	0	1	0.62	0	0.2
RP11-49K17	29464	1493	11	8	0	0	1	0	0
RP11-110K11	174	1640	12	8	1	4	1	0.12	0.5
GS-115H3	170803	437	3	8	3	0	1	0.38	0
RP11-99C24	88848	1859	14	8	0	2	1	0	0.25
CTD-2091K6	188760	448	3	7	2	1	0.88	0.29	0.14
RP11-81O20	74541	1851	14	5	0	2	0.62	0	0.4
RP11-14J15	69411	1999	16	8	0	2	1	0	0.25
RP11-14K11	54871	916	7	8	0	1	1	0	0.12
RP11-44J18	68066	1237	9	8	0	1	1	0	0.12
RP11-188G21	91159	1864	14	8	0	1	1	0	0.12
RP11-51L23	18475	863	7	8	0	1	1	0	0.12
RP11-46P18	112354	1291	9	8	0	2	1	0	0.25
RP11-36J16	47275	2079	17	8	1	0	1	0.12	0
RP11-85P1	184648	620	4	8	0	2	1	0	0.25
RP11-3L22	40593	894	7	7	0	0	0.88	0	0
RP11-59M15	68022	1848	14	7	0	3	0.88	0	0.43
RP11-4F24	1965	2026	17	8	0	4	1	0	0.5
CTD-2144B12	26202	775	6	7	1	0	0.88	0.14	0
RP11-60P1	58940	2163	18	7	0	3	0.88	0	0.43
RP11-208D7	33484	2058	17	7	1	0	0.88	0.14	0
CTD-2041G23	116987	989	7	8	0	1	1	0	0.12
RP11-11M9	19188	467	4	7	0	1	0.88	0	0.14
RP11-48D14	19893	2380	23	6	0	0	0.75	0	0
RP11-181G18	16652	2318	21	5	0	0	0.62	0	0
RP11-21O14	97135	546	4	8	0	1	1	0	0.12
RP11-8G18	46119	2393	23	6	0	0	0.75	0	0
RP11-13F12	41643	2271	20	7	0	0	0.88	0	0
CTD-2027F9	15665	1651	12	5	1	1	0.62	0.2	0.2
RP1-154P1	101000	1951	15	8	0	1	1	0	0.12
CTD-2015D3	26578	1081	8	7	0	4	0.88	0	0.57
RP11-96D22	72765	1570	11	8	3	0	1	0.38	0
RP1-308F9	2765	2032	17	5	0	0	0.62	0	0

Table W1. (continued)

Clone	kb	Position	Chrom	NumPresent.All	NumGain.All	NumLost.All	PropPresent.All	PropGain.All	PropLost.All
CTB-12F4	63810	1546	11	7	0	2	0.88	0	0.29
RP11-138J2	27243	1082	8	6	0	2	0.75	0	0.33
Vysis-DPC4/SMAD4_282B	46839	2153	18	8	0	3	1	0	0.38
RP11-901H12	21288	364	3	4	0	1	0.5	0	0.25
RP11-138K16	99419	65	1	6	0	2	0.75	0	0.33
CTD-2194B23	22710	17	1	8	0	1	1	0	0.12
RP11-557N1	6585	149	2	7	1	0	0.88	0.14	0
CTD-2009P15	2851	2222	20	8	0	1	1	0	0.12
RP11-137N24	172361	100	1	8	2	0	1	0.25	0
CTD-2018G3	151527	285	2	8	0	2	1	0	0.25
RP11-270B14	62347	219	2	8	0	0	1	0	0
RP11-148K15	201749	115	1	8	3	0	1	0.38	0
RP11-1146E5	170127	435	3	8	4	0	1	0.5	0
RP11-16H9	190982	318	2	8	0	2	1	0	0.25
GS1-208J7	66469	924	7	8	0	2	1	0	0.25
CTD-2108N10	22622	1339	10	8	1	0	1	0.12	0
RP11-368K23	115271	254	2	7	0	1	0.88	0	0.14
RMC20P131	47237	2286	20	8	0	0	1	0	0
RP11-117J18	12628	1207	9	5	0	3	0.62	0	0.6
CTD-2085L22	24198	1969	16	8	0	1	1	0	0.12
RP11-9G14	41329	662	5	6	0	0	0.75	0	0
RP11-8C21	87222	1257	9	7	0	0	0.88	0	0
CTD-2060E7	146341	2428	23	8	0	1	1	0	0.12
RP11-125E8	185297	446	3	8	3	0	1	0.38	0
RP11-8L13	69380	1239	9	7	0	0	0.88	0	0
CTD-2100E13	19276	2141	18	8	0	1	1	0	0.12
RP11-484O9	11884	162	2	7	0	0	0.88	0	0
RP11-49D19	62290	1543	11	6	1	0	0.75	0.17	0
RP4-747G18	100334	966	7	7	0	0	0.88	0	0
RP11-509E16	25317	179	2	8	0	0	1	0	0
RP11-3E12	34632	1505	11	8	0	2	1	0	0.25
RP11-13A18	141508	1191	8	7	4	1	0.88	0.57	0.14
RP11-78K8	75320	518	4	3	1	0	0.38	0.33	0
CTB-1D14	20589	867	7	5	0	0	0.62	0	0
RP11-195J3	46046	1527	11	8	0	0	1	0	0
RP11-130M1	124272	563	4	7	0	2	0.88	0	0.29
GS-126B28	122904	1429	10	4	1	1	0.5	0.25	0.25
CTD-2051H12	139842	1018	7	7	0	0	0.88	0	0
RP11-61D22	19585	1214	9	7	1	1	0.88	0.14	0.14
RP11-64J11	95599	1711	12	7	2	0	0.88	0.29	0
RP11-78C11	114104	980	7	5	1	2	0.62	0.2	0.4
RP11-3P19	105448	1724	12	8	2	0	1	0.25	0
CTC-352E23	76098	1578	11	8	2	0	1	0.25	0
RP11-90G22	99131	1873	14	7	0	2	0.88	0	0.29
CTD-2105O17	93550	1269	9	3	0	0	0.38	0	0
RP11-263K23	61706	1684	12	7	0	0	0.88	0	0
RP11-3I14	62316	1988	16	7	0	1	0.88	0	0.14
RP4-693L23	2869	1450	11	8	3	1	1	0.38	0.12
CTB-20D2	106595	972	7	5	0	0	0.62	0	0
RP11-195N11	54446	2305	20	8	1	0	1	0.12	0
GS-118K5	6597	2373	23	8	0	0	1	0	0
RP11-184C7	65483	1690	12	8	0	1	1	0	0.12
RP11-51J14	33310	1502	11	8	0	2	1	0	0.25
CTD-2178F17	118768	1163	8	8	4	0	1	0.5	0
RP11-12L18	57857	42	1	7	0	0	0.88	0	0
GS1-53N21	81611	944	7	7	0	2	0.88	0	0.29
RP11-96G7	125353	2419	23	8	0	2	1	0	0.25
RP11-16H3	26560	1489	11	7	0	0	0.88	0	0
GS1-202O8	49775	911	7	6	0	1	0.75	0	0.17
CTD-2115C17	32374	1500	11	8	0	2	1	0	0.25
RP11-341A4	188269	315	2	3	0	0	0.38	0	0
RP11-145G10	128500	1174	8	7	4	0	0.88	0.57	0
CTB-54J7	115962	986	7	7	0	1	0.88	0	0.14
CTD-2077L2	148481	83	1	8	3	0	1	0.38	0
RP11-266E24	30264	478	4	8	0	2	1	0	0.25
GS1-32L15	52046	914	7	8	0	1	1	0	0.12
CTD-2076G21	144968	579	4	8	0	2	1	0	0.25
RP11-268N2	49118	1105	8	8	2	0	1	0.25	0
RP11-18G18	68573	1849	14	7	0	3	0.88	0	0.43
RP11-181O4	20413	1967	16	7	0	0	0.88	0	0
RP11-23B22	31326	2258	20	5	0	0	0.62	0	0
RP11-119B13	155127	591	4	8	0	2	1	0	0.25
RP11-110A13	62029	1987	16	5	0	1	0.62	0	0.2

Table W1. (continued)

Clone	kb	Position	Chrom	NumPresent.All	NumGain.All	NumLost.All	PropPresent.All	PropGain.All	PropLost.All
RP11-189F4	175400	610	4	8	0	3	1	0	0.38
RP11-96F19	75752	1696	12	5	0	0	0.62	0	0
RP11-217K3	76297	2005	16	7	0	3	0.88	0	0.43
RP11-90F13	34776	1507	11	6	0	0	0.75	0	0
RP11-112M10	49870	1670	12	7	0	0	0.88	0	0
GS-7N12	76760	1579	11	8	3	1	1	0.38	0.12
RP11-123M6	99216	1874	14	5	0	1	0.62	0	0.2
CTD-2074K5	75203	516	4	4	0	1	0.5	0	0.25
RP11-74I8	51016	1673	12	8	0	0	1	0	0
RP11-123C5	68772	1997	16	8	0	2	1	0	0.25
RP11-217O10	45498	904	7	8	1	0	1	0.12	0
RP11-52E12	98250	1279	9	8	0	1	1	0	0.12
RP11-270C6	56724	1836	14	6	0	2	0.75	0	0.33
RP11-71F18	19184	865	7	8	0	0	1	0	0
RP11-67G24	82882	528	4	5	0	1	0.62	0	0.2
RP11-50F16	58502	2095	17	8	0	0	1	0	0
RP11-196K13	185332	622	4	8	0	2	1	0	0.25
RP11-70D20	41166	897	7	6	0	1	0.75	0	0.17
RP11-63D17	76416	1853	14	8	0	1	1	0	0.12
RP11-9A21	7671	2040	17	5	0	2	0.62	0	0.4
CTD-2009C6	64226	803	6	8	1	0	1	0.12	0
DMPC-HFF#1-61H8	38260	2062	17	7	1	0	0.88	0.14	0
RP11-241H2	33563	2059	17	8	0	0	1	0	0
CTD-2001C15	58619	43	1	8	0	0	1	0	0
RP11-11M9	19188	467	4	5	0	0	0.62	0	0
RP11-124H12	31163	2385	23	6	0	0	0.75	0	0
RP11-44F3	26442	2325	21	7	0	0	0.88	0	0
RP11-161I7	94902	545	4	8	0	1	1	0	0.12
RP11-149I10	65192	2399	23	4	0	0	0.5	0	0
RP11-51K19	47999	2288	20	8	1	0	1	0.12	0
CTD-2063K20	131879	1308	9	7	0	1	0.88	0	0.14
CTD-2371A5	44	1952	16	8	2	1	1	0.25	0.12
CTD-2202J2	38842	1749	13	8	0	6	1	0	0.75
RP11-102M18	73337	1572	11	8	3	0	1	0.38	0
RP1-1J20	2704	2031	17	6	0	1	0.75	0	0.17
CTD-2244P3	47245	1530	11	7	0	2	0.88	0	0.29
RP11-116F9	28178	1083	8	5	0	4	0.62	0	0.8
RP11-507P3	77000	2175	18	8	0	1	1	0	0.12
CTD-2109N6	50293	382	3	5	0	0	0.62	0	0
RP11-156G15	101060	66	1	6	0	3	0.75	0	0.5
CTD-2098K5	32248	26	1	8	1	0	1	0.12	0
RP11-439M11	6962	151	2	7	0	0	0.88	0	0
CTD-2019H1	44479	2279	20	8	0	0	1	0	0
RP11-162L13	182956	106	1	5	2	0	0.62	0.4	0
CTD-2250B20	158734	293	2	5	0	0	0.62	0	0
RP11-240J3	63882	220	2	8	0	0	1	0	0
RP11-249H15	202636	117	1	8	5	0	1	0.62	0
CTB-364E3	180238	443	3	8	1	0	1	0.12	0
RP11-284E5	191656	319	2	8	0	1	1	0	0.12
GS1-121J16	154922	1031	7	8	0	3	1	0	0.38
CTB-46B12	89289	1395	10	8	0	4	1	0	0.5
RP11-98C1	118783	256	2	6	0	1	0.75	0	0.17
RMC20P070	53691	2304	20	5	0	0	0.62	0	0
RP11-95G21	89148	1261	9	7	0	0	0.88	0	0
CTD-2237N10	854	2024	17	8	0	2	1	0	0.25
RP11-10D13	178	1311	10	8	1	1	1	0.12	0.12
RP11-5K11	98443	1281	9	6	0	0	0.75	0	0
CTD-164O19	11033	2181	19	7	0	0	0.88	0	0
RP11-18D18	112724	553	4	6	0	2	0.75	0	0.33
RP11-144L7	38085	1234	9	8	1	0	1	0.12	0
CTD-2019O2	46686	2078	17	8	2	0	1	0.25	0
RP11-496P1	14257	164	2	4	0	0	0.5	0	0
RP11-160L9	67049	1556	11	8	2	0	1	0.25	0
RP1-3K23	159000	1034	7	3	0	0	0.38	0	0
RP11-443B20	24995	177	2	8	0	0	1	0	0
RP11-145B20	35241	1508	11	7	0	1	0.88	0	0.14
RP11-88M23	134425	1183	8	8	4	0	1	0.5	0
RP11-80I4	76371	522	4	5	0	0	0.62	0	0
RP11-156A13	11685	1465	11	3	0	0	0.38	0	0
RP11-119K21	115227	554	4	8	0	1	1	0	0.12
GS-274P9	61124	216	2	8	1	0	1	0.12	0
CTD-2007G21	93098	959	7	8	0	0	1	0	0
RP11-61G7	35800	1230	9	8	2	0	1	0.25	0

Table W1. (continued)

Clone	kb	Position	Chrom	NumPresent.All	NumGain.All	NumLost.All	PropPresent.All	PropGain.All	PropLost.All
RP11-74K11	93024	1705	12	8	3	0	1	0.38	0
RP11-110C11	114969	982	7	3	0	0	0.38	0	0
RP11-16M7	63300	1687	12	8	0	1	1	0	0.12
RMC22P003	37863	2365	22	8	0	1	1	0	0.12
RP11-121H7	100382	1876	14	7	2	0	0.88	0.29	0
CTD-3145B15	131043	1307	9	8	3	0	1	0.38	0
RP11-24M13	8154	1956	16	8	0	1	1	0	0.12
RP11-2I4	55603	1979	16	8	1	3	1	0.12	0.38
CTD-220BJ5	32374	1499	11	8	0	2	1	0	0.25
CTC-520A9	40815	895	7	8	0	1	1	0	0.12
RP11-55E1	53054	2300	20	8	1	0	1	0.12	0
RP4-677N1	7911	2375	23	7	0	3	0.88	0	0.43
RP11-196H14	62763	1685	12	8	0	1	1	0	0.12
RP11-56E13	47997	1531	11	8	0	1	1	0	0.12
CTD-2005M12	118645	1161	8	8	4	0	1	0.5	0
RP11-6B16	81966	57	1	8	0	0	1	0	0
RP11-79N19	109584	2415	23	8	0	1	1	0	0.12
RP11-72A10	36741	1515	11	8	0	2	1	0	0.25
CTB-141D22	90029	954	7	7	0	1	0.88	0	0.14
CTD-2192B11	69134	1560	11	8	3	0	1	0.38	0
RP11-2C13	198635	323	2	5	0	1	0.62	0	0.2
RP11-158K1	125385	1166	8	8	5	0	1	0.62	0
RP11-51P23	8833	1957	16	7	0	1	0.88	0	0.14
CTD-2084F3	168844	98	1	7	3	0	0.88	0.43	0
RP11-53F9	30614	480	4	8	0	2	1	0	0.25
GS1-74E4	119322	990	7	6	1	1	0.75	0.17	0.17
CTD-2141B2	112438	696	5	8	0	6	1	0	0.75
RP11-83O14	53073	1109	8	8	3	0	1	0.38	0
RP11-9D19	99306	1875	14	7	0	1	0.88	0	0.14
RP11-141E3	23518	1968	16	7	1	1	0.88	0.14	0.14
RP11-103H2	9084	2235	20	7	0	2	0.88	0	0.29
RP11-218A2	152620	587	4	8	0	1	1	0	0.12
RP11-52B24	64926	1989	16	5	0	1	0.62	0	0.2
RP11-130I2	169974	603	4	7	0	2	0.88	0	0.29
RP11-96K24	13644	1648	12	8	1	4	1	0.12	0.5
RP11-224E17	68595	1996	16	7	0	2	0.88	0	0.29
RP11-98J9	13767	1470	11	7	0	2	0.88	0	0.29
RP11-114G18	80359	1698	12	8	1	0	1	0.12	0
CTC-432H16	46969	2285	20	6	0	0	0.75	0	0
RP11-140I4	90544	1862	14	6	0	1	0.75	0	0.17
CTD-2103L3	75331	519	4	8	0	1	1	0	0.12
RP11-73I12	31301	1661	12	8	1	0	1	0.12	0
RP11-230E8	71378	2000	16	8	0	3	1	0	0.38
RP11-146C1	46877	908	7	8	1	1	1	0.12	0.12
RP11-54O21	71119	1240	9	4	0	0	0.5	0	0
RP11-266F20	56641	1835	14	4	0	0	0.5	0	0
RP11-70K3	18118	862	7	8	0	1	1	0	0.12
RP11-11P12	84059	530	4	8	0	0	1	0	0
RP11-60B6	85116	2016	16	8	0	6	1	0	0.75
RP11-272O3	179302	615	4	8	0	3	1	0	0.38
RP11-115G1	38494	891	7	7	0	1	0.88	0	0.14
RP11-63G22	63384	1842	14	8	0	2	1	0	0.25
RP11-9G4	53875	2089	17	8	0	0	1	0	0
CTD-2015J17	137396	834	6	7	0	0	0.88	0	0
DMPC-HFF#1-359E5	89168	1944	15	7	0	0	0.88	0	0
RP11-225G19	73078	2105	17	8	1	0	1	0.12	0
CTD-2064P10	215672	131	1	8	2	1	1	0.25	0.12
RP11-238L9	20415	469	4	5	0	0	0.62	0	0
RP11-258I23	40235	2390	23	8	0	0	1	0	0
RP11-70L17	29646	2332	21	8	0	0	1	0	0
RP11-221M14	91710	543	4	5	0	1	0.62	0	0.2
RP11-177A4	68131	2402	23	2	0	0	0.25	0	0
RP11-93L19	40260	2267	20	8	0	0	1	0	0
CTD-2156P3	22596	1808	14	8	0	1	1	0	0.12
RP11-380F1	3778	1954	16	8	1	0	1	0.12	0
CTB-172A10	92707	1265	9	8	0	0	1	0	0
RP11-168B13	74815	1573	11	8	4	0	1	0.5	0
RP1-89K1	7773	2041	17	1	0	0	0.12	0	0
CTD-2100I14	47052	37	1	6	0	0	0.75	0	0
RP11-275K7	28889	1084	8	5	0	2	0.62	0	0.4
CTB-129F16	0	2176	19	8	1	2	1	0.12	0.25
RP11-865O5	52540	384	3	8	0	0	1	0	0
RP11-182H2	101148	67	1	4	0	1	0.5	0	0.25

Table W1. (continued)

Clone	kb	Position	Chrom	NumPresent.All	NumGain.All	NumLost.All	PropPresent.All	PropGain.All	PropLost.All
CTD-2229N1	91580	63	1	8	1	1	1	0.12	0.12
RP11-542B5	8136	152	2	7	0	0	0.88	0	0
CTD-2201B8	33393	2260	20	8	1	0	1	0.12	0
RP11-134C1	185224	108	1	5	3	0	0.62	0.6	0
CTD-2221F19	234370	346	2	7	0	2	0.88	0	0.29
RP11-447N19	64122	221	2	8	0	0	1	0	0
RP11-219P13	202893	118	1	8	3	0	1	0.38	0
CTD-2224I19	1864	457	4	8	0	1	1	0	0.12
RP11-30N9	180832	310	2	8	1	1	1	0.12	0.12
GS1-207P11	85864	948	7	6	0	0	0.75	0	0
RP11-729B4	59956	1542	11	8	0	0	1	0	0
RP11-416H1	122459	265	2	8	0	2	1	0	0.25
RMC20B4135	51669	2297	20	8	0	0	1	0	0
RP11-96B7	74535	1243	9	7	0	0	0.88	0	0
CTD-2008I6	7802	2042	17	8	0	2	1	0	0.25
RP11-72C6	7901	1322	10	8	1	2	1	0.12	0.25
RP11-4O1	110120	1288	9	6	0	2	0.75	0	0.33
RP11-1024P17	30710	371	3	7	0	0	0.88	0	0
RP11-131K16	121886	559	4	7	0	1	0.88	0	0.14
RP11-130E20	129650	1305	9	8	0	0	1	0	0
CTD-2017G14	9821	2131	18	8	0	1	1	0	0.12
RP11-146J19	14033	163	2	6	0	1	0.75	0	0.17
RP11-256P19	71659	1568	11	8	4	0	1	0.5	0
GS1-77L23	0	1035	8	8	0	7	1	0	0.88
RP11-527I18	26766	180	2	8	0	0	1	0	0
RP11-36H11	36361	1511	11	7	0	2	0.88	0	0.29
RP11-28A4	136665	1187	8	8	4	0	1	0.5	0
RP11-115K14	76058	521	4	8	0	0	1	0	0
RP11-61G3	31101	2336	21	8	0	0	1	0	0
CTB-82N15	67488	1693	12	7	2	0	0.88	0.29	0
CTD-2067A9	79459	941	7	8	0	1	1	0	0.12
RP11-58B8	11640	1205	9	8	0	1	1	0	0.12
RP11-51M11	89158	1700	12	6	2	0	0.75	0.33	0
RP11-51M22	115396	983	7	8	1	2	1	0.12	0.25
RP11-3E7	105578	1725	12	8	2	0	1	0.25	0
GS-2B19	48398	2289	20	8	1	0	1	0.12	0
RP11-110L8	83412	2011	16	8	0	4	1	0	0.5
GS1-135I17	137000	1309	9	8	0	1	1	0	0.12
RP11-261M2	93927	1708	12	7	2	0	0.88	0.29	0
RP11-106L3	57967	1983	16	7	0	1	0.88	0	0.14
CTD-2337C7	44601	1524	11	8	0	1	1	0	0.12
CTC-224F8	96636	962	7	7	1	1	0.88	0.14	0.14
RP11-78P4	1972	2220	20	8	1	2	1	0.12	0.25
RP1-92E23	71907	2405	23	8	1	0	1	0.12	0
RP11-206D16	18417	1652	12	8	1	1	1	0.12	0.12
RP11-85A19	48099	1532	11	8	0	1	1	0	0.12
CTD-2013D21	110377	1160	8	8	5	0	1	0.62	0
RP11-4J2	174528	101	1	8	2	0	1	0.25	0
CTB-102E19	87477	950	7	8	0	1	1	0	0.12
RP11-267D20	134636	2425	23	8	0	1	1	0	0.12
RP1-88B16	69100	1559	11	8	3	1	1	0.38	0.12
GS1-53I5	144769	1022	7	8	0	2	1	0	0.25
CTD-2057A4	107774	1609	11	8	1	0	1	0.12	0
RP11-329O10	203860	326	2	5	0	0	0.62	0	0
RP11-128G18	127639	1173	8	8	5	0	1	0.62	0
RP11-58M17	8997	1958	16	7	3	0	0.88	0.43	0
CTD-2159A18	233669	138	1	7	1	2	0.88	0.14	0.29
RP11-205N12	30469	479	4	7	1	1	0.88	0.14	0.14
CTC-277H20	111198	977	7	8	1	1	1	0.12	0.12
CTD-2110E3	75331	520	4	7	0	0	0.88	0	0
RP11-175H20	53297	1111	8	8	2	0	1	0.25	0
RP11-26J5	92807	1866	14	7	0	1	0.88	0	0.14
RP11-150K5	29955	1971	16	8	0	0	1	0	0
RP11-215H8	78686	1582	11	8	1	0	1	0.12	0
RP11-192D11	160107	596	4	8	0	2	1	0	0.25
RP11-154N7	66171	1990	16	8	0	2	1	0	0.25
RP11-254A7	170539	604	4	8	0	2	1	0	0.25
RP11-97A6	60918	1682	12	8	0	0	1	0	0
RP11-178P16	82157	2010	16	8	0	4	1	0	0.5
RP11-102N4	36674	1514	11	8	0	3	1	0	0.38
RP11-119J21	129158	1736	12	8	0	1	1	0	0.12
GS-229A1	180452	104	1	8	2	0	1	0.25	0
RP11-128L1	98738	1872	14	8	0	0	1	0	0



Table W1. (continued)

Clone	kb	Position	Chrom	NumPresent.All	NumGain.All	NumLost.All	PropPresent.All	PropGain.All	PropLost.All
CTD-2015K11	8857	2234	20	8	0	3	1	0	0.38
RP11-82I16	92401	1704	12	8	0	1	1	0	0.12
RP11-1B11	81884	2009	16	6	0	4	0.75	0	0.67
RP11-52M17	44369	903	7	8	0	0	1	0	0
RP11-57N18	73439	1242	9	8	0	1	1	0	0.12
RP11-242D1	57707	1837	14	5	0	1	0.62	0	0.2
RP11-34N11	29280	875	7	8	0	0	1	0	0
RP11-203P12	88522	538	4	8	1	0	1	0.12	0
RP11-89A15	8460	2043	17	8	0	4	1	0	0.5
RP11-18D7	184254	619	4	5	0	1	0.62	0	0.2
RP11-141P12	42828	899	7	8	0	1	1	0	0.12
RP11-141N1	91384	1702	12	7	2	0	0.88	0.29	0
RP11-26B13	77146	2112	17	8	3	0	1	0.38	0
CTD-2043F20	160238	838	6	8	0	0	1	0	0
RP1-254N16	16108	167	2	8	1	0	1	0.12	0
RP11-201E5	74492	2108	17	8	0	0	1	0	0
CTD-2074H8	91856	955	7	8	0	0	1	0	0
RP11-35E16	23295	470	4	8	0	1	1	0	0.12
RP11-126A13	54384	2396	23	7	0	1	0.88	0	0.14
RP11-108H5	26789	2328	21	8	0	1	1	0	0.12
RP11-203M9	99792	548	4	8	0	1	1	0	0.12
RP11-94J8	113066	2417	23	6	0	1	0.75	0	0.17
RP11-111H12	40192	2266	20	8	0	0	1	0	0
CTD-2017D5	88211	1699	12	7	1	0	0.88	0.14	0
GS-205F7	68547	1995	16	7	0	2	0.88	0	0.29
CTD-2008N7	47663	1668	12	7	0	1	0.88	0	0.14
RP11-258M15	33579	1092	8	8	0	4	1	0	0.5
RP1-172N16	2765	2034	17	6	0	1	0.75	0	0.17
CTD-2145H2	201307	114	1	7	1	0	0.88	0.14	0
RP11-133O7	39855	1099	8	3	0	3	0.38	0	1
GS1-325I23	64000	2215	19	7	0	0	0.88	0	0
CTD-2271B13	48055	496	4	6	0	0	0.75	0	0
RP11-12P11	112584	408	3	8	1	1	1	0.12	0.12
CTD-2050A15	109770	70	1	6	1	1	0.75	0.17	0.17
RP11-434B12	8710	154	2	6	0	0	0.75	0	0
CTD-2220O2	46514	2282	20	8	0	0	1	0	0
RP11-165M11	144684	426	3	5	1	0	0.62	0.2	0
RP11-51D22	24139	368	3	8	0	0	1	0	0
RP11-568N6	64599	222	2	8	0	0	1	0	0
RP11-172G5	174407	440	3	6	2	0	0.75	0.33	0
CTC-205I10	88194	536	4	2	0	0	0.25	0	0
RP11-67G7	183183	312	2	8	0	2	1	0	0.25
RP11-59D10	120789	826	6	8	0	2	1	0	0.25
RP11-867O8	64802	1549	11	8	1	0	1	0.12	0
RP11-498O20	122959	267	2	8	0	1	1	0	0.12
RP11-34L12	82259	1583	11	8	2	0	1	0.25	0
RP11-62M23	3368	3	1	4	1	1	0.5	0.25	0.25
RP11-670E13	55365	2091	17	8	1	0	1	0.12	0
RP11-28P14	6776	355	3	8	0	1	1	0	0.12
RP11-254E16	84258	60	1	6	1	1	0.75	0.17	0.17
RP11-725K8	48986	2155	18	8	0	3	1	0	0.38
RP11-77F4	152716	588	4	6	0	0	0.75	0	0
RP11-192J8	117849	79	1	8	0	0	1	0	0
CTD-2014H17	65844	1846	14	8	0	3	1	0	0.38
RP11-257N21	34332	194	2	8	0	0	1	0	0
RP11-218M19	21360	1879	15	7	0	0	0.88	0	0
RP11-107P5	17511	1063	8	7	0	4	0.88	0	0.57
RP11-538J11	27414	181	2	8	0	0	1	0	0
RP11-134G19	101595	1597	11	7	1	1	0.88	0.14	0.14
RP11-193J5	163241	90	1	8	1	0	1	0.12	0
RP11-111H24	23275	2143	18	7	0	1	0.88	0	0.14
RP11-26M17	121198	558	4	8	0	1	1	0	0.12
RP11-178C12	188204	633	4	8	0	1	1	0	0.12
RP11-60N17	11071	2240	20	8	0	3	1	0	0.38
RP11-128J2	139994	574	4	7	0	1	0.88	0	0.14
RP11-182G5	176384	611	4	6	0	3	0.75	0	0.5
RP11-24K24	50670	2295	20	8	1	0	1	0.12	0
RP11-85G7	18610	1653	12	7	2	0	0.88	0.29	0
RP11-15E10	18596	2320	21	8	0	0	1	0	0
RP11-227F7	131013	1177	8	3	1	0	0.38	0.33	0
CTB-124G9	67226	2100	17	8	0	3	1	0	0.38
GS1-24B21	34607	882	7	8	0	0	1	0	0
RP11-270O24	98701	2409	23	8	0	1	1	0	0.12

Table W1. (continued)

Clone	kb	Position	Chrom	NumPresent.All	NumGain.All	NumLost.All	PropPresent.All	PropGain.All	PropLost.All
RP11-72P14	48340	499	4	7	0	0	0.88	0	0
CTB-97E14	125500	996	7	7	1	2	0.88	0.14	0.29
RP11-96L18	2604	845	7	8	0	2	1	0	0.25
RP11-121P15	71696	512	4	7	0	0	0.88	0	0
CTC-268N4	135520	832	6	6	0	0	0.75	0	0
RP11-11N17	28756	1491	11	6	0	0	0.75	0	0
RP11-122A4	50904	1827	14	4	0	0	0.5	0	0
RP11-63E7	121135	2418	23	6	0	0	0.75	0	0
RP11-42M14	51088	2087	17	8	0	0	1	0	0
CTD-2103O7	41751	2351	21	7	0	1	0.88	0	0.14
RP11-94D17	24608	1810	14	7	0	0	0.88	0	0
RP11-61P1	61428	1683	12	4	1	0	0.5	0.25	0
CTD-2039C11	101746	1598	11	7	1	1	0.88	0.14	0.14
RP11-23D3	38678	1819	14	6	0	0	0.75	0	0
RP11-70D7	33752	2386	23	8	0	0	1	0	0
CTD-2006C10	64806	672	5	4	0	1	0.5	0	0.25
RP11-237F24	128710	1176	8	8	5	0	1	0.62	0
CTB-439L11	76832	2111	17	8	3	0	1	0.38	0
RP11-143M4	50701	2084	17	7	0	0	0.88	0	0
GS1-213H12	26218	872	7	8	0	0	1	0	0
CTB-142O24	6452	2037	17	8	1	2	1	0.12	0.25
RP11-73F15	29255	2054	17	8	0	0	1	0	0
RP11-204M16	23223	1072	8	6	0	5	0.75	0	0.83
RP11-28G16	90747	1863	14	8	0	1	1	0	0.12
RP11-259N3	48483	1974	16	8	0	0	1	0	0
RP11-233M1	85481	1589	11	8	0	1	1	0	0.12
RP11-231J7	158730	595	4	8	0	2	1	0	0.25
RP11-151M19	67365	1993	16	8	0	2	1	0	0.25
RP11-6E9	171540	605	4	4	0	2	0.5	0	0.5
RP11-97N16	51325	1674	12	8	0	1	1	0	0.12
RP11-162I18	83608	2012	16	8	0	4	1	0	0.5
RP11-113M18	29798	1494	11	7	0	0	0.88	0	0
RP11-119J23	113916	1731	12	8	2	0	1	0.25	0
GS-385N22	58940	2164	18	8	0	4	1	0	0.5
RP11-160P21	92658	1865	14	8	0	1	1	0	0.12
CTD-2013D15	10783	2238	20	7	0	3	0.88	0	0.43
RP11-81G12	128754	1735	12	8	0	1	1	0	0.12
RP11-253O10	75323	2004	16	8	0	4	1	0	0.5
RP11-112B7	44081	901	7	8	0	0	1	0	0
RP11-82L8	145376	582	4	8	0	1	1	0	0.12
RP11-238L4	93287	1867	14	8	1	0	1	0.12	0
RP11-160L16	22543	869	7	8	0	0	1	0	0
RP11-36K8	90433	540	4	8	0	1	1	0	0.12
RP11-118K23	58226	2093	17	6	0	0	0.75	0	0
RP11-78A18	178633	613	4	8	0	3	1	0	0.38
RP11-115G23	34955	883	7	7	0	1	0.88	0	0.14
RP11-165H12	99314	1713	12	8	2	0	1	0.25	0
RP11-84J3	77643	2113	17	8	3	1	1	0.38	0.12
CTD-2051E21	170738	841	6	7	0	0	0.88	0	0
CTB-25O22	35007	2192	19	8	1	0	1	0.12	0
RP11-252N11	33563	2060	17	8	0	0	1	0	0
CTD-2039F11	115990	987	7	8	0	1	1	0	0.12
RP11-118C24	25331	472	4	8	0	1	1	0	0.12
RP11-30M20	64139	2398	23	7	1	0	0.88	0.14	0
RP11-143A3	18245	2319	21	8	0	0	1	0	0
RP11-115O16	94193	544	4	8	0	1	1	0	0.12
RP11-155A5	129432	2422	23	8	0	1	1	0	0.12
RP11-10D18	51182	2296	20	7	0	0	0.88	0	0
CTD-2022D20	99789	1402	10	7	0	2	0.88	0	0.29
PAC 191P24	91000	2020	16	8	0	2	1	0	0.25
CTB-34H15	65199	1921	15	8	0	1	1	0	0.12
RP11-274F14	35530	1093	8	8	0	6	1	0	0.75
RP11-481C4	49714	2083	17	8	1	0	1	0.12	0
CTD-2084O7	47790	209	2	8	0	1	1	0	0.12
RP11-284J3	40661	1101	8	5	0	2	0.62	0	0.4
RP1-82O2	127	2216	20	5	0	0	0.62	0	0
CTD-2078H8	88516	537	4	8	0	2	1	0	0.25
RP11-5K13	114258	410	3	8	1	0	1	0.12	0
CTD-2096I16	160213	89	1	7	1	0	0.88	0.14	0
RP11-327F6	8886	155	2	4	0	0	0.5	0	0
CTD-2162L15	33636	2345	21	8	1	0	1	0.12	0
RP11-229G6	150128	428	3	8	3	0	1	0.38	0
CTB-35K18	48161	379	3	8	0	0	1	0	0

Table W1. (continued)

Clone	kb	Position	Chrom	NumPresent.All	NumGain.All	NumLost.All	PropPresent.All	PropGain.All	PropLost.All
RP11-218N6	68478	228	2	7	3	0	0.88	0.43	0
RP11-148D23	174687	441	3	5	2	0	0.62	0.4	0
CTB-159E10	123197	560	4	7	0	2	0.88	0	0.29
RP11-85B19	120809	260	2	8	0	1	1	0	0.12
RP11-231F3	124948	827	6	8	0	0	1	0	0
RP11-816P15	93773	1592	11	8	1	1	1	0.12	0.12
RP11-132N24	120745	259	2	8	0	1	1	0	0.12
RP11-3D4	31731	1888	15	8	0	3	1	0	0.38
RP11-51B4	6069	5	1	4	0	0	0.5	0	0
CTD-2048F17	8396	2130	18	8	0	1	1	0	0.12
RP11-271E2	13853	361	3	6	1	0	0.75	0.17	0
RP11-246O4	82663	58	1	6	0	2	0.75	0	0.33
RP11-748M14	43675	2150	18	8	0	2	1	0	0.25
RP11-6L19	167513	600	4	8	0	2	1	0	0.25
RP11-29M22	119505	80	1	7	0	0	0.88	0	0
CTD-2075J8	2795	2035	17	7	0	2	0.88	0	0.29
RP11-119B15	35888	195	2	6	0	0	0.75	0	0
RP11-87I21	22771	1880	15	7	0	0	0.88	0	0
RP11-24C23	118768	1162	8	8	5	0	1	0.62	0
RP11-45M3	27502	182	2	8	0	0	1	0	0
RP11-33F6	102471	1601	11	8	1	1	1	0.12	0.12
RP11-28D10	164792	92	1	8	4	0	1	0.5	0
RP11-19F14	28036	2144	18	8	0	1	1	0	0.12
RP11-100E15	124058	561	4	7	0	3	0.88	0	0.43
RP11-262I1	187703	631	4	8	0	1	1	0	0.12
RP11-287E11	11519	2241	20	7	0	2	0.88	0	0.29
RP11-22O8	141249	575	4	8	3	3	1	0.38	0.38
RP11-272N13	172999	606	4	8	0	4	1	0	0.5
RP11-15M15	52394	2298	20	8	1	0	1	0.12	0
RP11-88M8	50918	1672	12	8	3	0	1	0.38	0
RP11-165B11	12088	1961	16	8	0	1	1	0	0.12
RP11-128P9	133449	1181	8	6	3	0	0.75	0.5	0
CTB-292L7	50764	2085	17	8	0	0	1	0	0
CTB-185C18	116565	988	7	8	1	1	1	0.12	0.12
RP11-107C19	47333	2394	23	8	0	0	1	0	0
RP11-121C2	47679	495	4	6	0	0	0.75	0	0
GS1-165K6	16990	859	7	8	0	0	1	0	0
RP11-234N20	2842	847	7	8	0	0	1	0	0
RP11-117B11	73488	513	4	8	0	1	1	0	0.12
GS-490C21	25249	1655	12	8	0	1	1	0	0.12
RP11-18B9	40253	1516	11	8	0	1	1	0	0.12
RP11-109D12	25116	1811	14	8	0	0	1	0	0
RP11-130N6	147086	2430	23	4	0	0	0.5	0	0
RP11-52B5	65427	2099	17	7	2	0	0.88	0.29	0
CTD-2188N19	31094	2384	23	8	0	0	1	0	0
RP11-91K19	30071	1815	14	8	0	0	1	0	0
CTD-2080I19	68483	1558	11	8	1	0	1	0.12	0
RP11-26M6	33325	1817	14	8	0	0	1	0	0
RP11-7D23	89514	2019	16	8	0	3	1	0	0.38
CTD-2202A14	149773	722	5	8	0	2	1	0	0.25
RP11-238H10	98877	1149	8	6	2	0	0.75	0.33	0
CTB-120N12	75104	2110	17	8	3	0	1	0.38	0
RP11-128J1	77897	2114	17	8	3	1	1	0.38	0.12
GS1-54J22	6993	854	7	7	0	1	0.88	0	0.14
CTB-339E12	2704	2029	17	8	1	2	1	0.12	0.25
RP11-61B16	624	2023	17	8	0	4	1	0	0.5
RP11-172D2	55737	1119	8	7	1	0	0.88	0.14	0
RP11-14C21	62633	1839	14	5	0	2	0.62	0	0.4
RP11-148M3	50758	1977	16	6	0	0	0.75	0	0
RP11-57F14	5371	1455	11	7	0	0	0.88	0	0
RP11-27H11	160183	597	4	8	0	1	1	0	0.12
RP11-84C4	68111	1994	16	8	0	2	1	0	0.25
RP11-199O10	169422	602	4	4	0	2	0.5	0	0.5
RP11-100P18	30116	1659	12	8	1	1	1	0.12	0.12
RP11-254F19	84579	2014	16	3	0	2	0.38	0	0.67
RP11-128F16	36016	1509	11	8	0	2	1	0	0.25
RP11-132H4	52480	1676	12	8	0	0	1	0	0
GS-249B10	114548	77	1	8	0	2	1	0	0.25
RP11-111F22	97866	1870	14	8	0	0	1	0	0
CTD-2042A23	40496	2269	20	8	0	0	1	0	0
RP11-78D24	127116	1734	12	8	0	1	1	0	0.12
RP11-61L1	78534	2008	16	8	1	4	1	0.12	0.5
RP11-109N2	45896	906	7	8	0	0	1	0	0

Table W1. (continued)

Clone	kb	Position	Chrom	NumPresent.All	NumGain.All	NumLost.All	PropPresent.All	PropGain.All	PropLost.All
RP11-33C6	145376	581	4	8	0	0	1	0	0
RP11-182D6	65448	1844	14	8	0	2	1	0	0.25
RP11-87M15	36505	887	7	8	0	0	1	0	0
RP11-132F20	90591	541	4	8	0	0	1	0	0
RP11-131C4	50764	2086	17	8	0	0	1	0	0
RP11-171G12	181898	616	4	7	0	1	0.88	0	0.14
RP11-15M23	40864	896	7	6	0	0	0.75	0	0
RP11-166E4	91954	1703	12	8	2	0	1	0.25	0
RP11-61B20	7041	2039	17	8	0	2	1	0	0.25
CTD-2029L20	67145	1235	9	8	0	0	1	0	0
DMPC-HFF#1-1210D3	21883	2357	22	7	0	0	0.88	0	0
RP11-234J24	45775	2077	17	8	2	0	1	0.25	0
CTD-2051J11	27543	22	1	7	1	0	0.88	0.14	0
RP11-119N7	25835	473	4	4	0	1	0.5	0	0.25
RP11-204D21	67136	2401	23	8	1	0	1	0.12	0
RP11-32A2	29801	2334	21	6	0	0	0.75	0	0
RP11-85I10	100687	549	4	8	0	1	1	0	0.12
RP11-112H23	135853	2426	23	6	0	1	0.75	0	0.17
RP11-55D2	53186	2301	20	8	0	0	1	0	0
CTD-2057C13	101295	1716	12	8	1	0	1	0.12	0
GS1-68F18	0	2021	17	7	0	3	0.88	0	0.43
CTD-2169M23	61564	1124	8	8	2	0	1	0.25	0
RP11-237M13	35635	1094	8	8	0	5	1	0	0.62
GS1-50C4	82000	2119	17	6	3	0	0.75	0.5	0
CTD-2018D13	70649	232	2	8	0	0	1	0	0
RP11-48D21	40481	1100	8	5	0	3	0.62	0	0.6
CTC-334G22	10613	2237	20	8	2	3	1	0.25	0.38
RP11-93P6	111783	819	6	7	0	1	0.88	0	0.14
RP11-165B13	118923	413	3	7	1	2	0.88	0.14	0.29
CTD-2235K13	220942	134	1	8	3	1	1	0.38	0.12
RP11-4K20	11074	158	2	8	1	0	1	0.12	0
CTD-2231K11	33597	2344	21	8	2	0	1	0.25	0
RP11-145F16	151347	429	3	5	2	1	0.62	0.4	0.2
CTD-2172D17	185406	447	3	8	3	0	1	0.38	0
RP11-474G23	68282	227	2	8	1	0	1	0.12	0
RP11-118F4	180749	445	3	5	2	0	0.62	0.4	0
CTD-2100H15	186031	626	4	8	0	1	1	0	0.12
RP11-17O6	122394	264	2	8	1	1	1	0.12	0.12
RP11-107M3	128717	829	6	8	0	0	1	0	0
RP11-817J15	101955	1599	11	8	4	0	1	0.5	0
RP11-438O12	121008	261	2	8	1	1	1	0.12	0.12
RP11-2D17	40344	1895	15	4	0	0	0.5	0	0
RP11-60J11	6817	6	1	8	1	1	1	0.12	0.12
RP11-729G3	46857	2154	18	7	0	2	0.88	0	0.29
RP11-255O19	15780	363	3	5	0	0	0.62	0	0
RP11-211D4	85495	61	1	7	0	0	0.88	0	0
RP11-358D14	62767	2314	20	8	1	1	1	0.12	0.12
RP11-140M13	179291	614	4	6	0	1	0.75	0	0.17
RP11-105E14	143223	81	1	8	1	0	1	0.12	0
CTD-2018N9	23130	1883	15	8	1	0	1	0.12	0
RP11-173C1	39192	201	2	7	1	2	0.88	0.14	0.29
RP11-171C8	22904	1882	15	4	0	0	0.5	0	0
GS1-261I1	147000	1192	8	8	4	0	1	0.5	0
RP11-373D23	28535	183	2	7	1	0	0.88	0.14	0
RP11-179B7	103836	1602	11	2	0	0	0.25	0	0
RP11-167M6	164980	93	1	7	2	0	0.88	0.29	0
RP11-63N12	30825	2145	18	8	0	1	1	0	0.12
RP11-107E21	125135	565	4	8	0	2	1	0	0.25
RP11-243D3	185542	623	4	8	0	3	1	0	0.38
RP11-238I2	13575	2243	20	8	0	3	1	0	0.38
RP11-218I24	138350	572	4	8	0	3	1	0	0.38
RP11-110O14	174952	609	4	7	0	2	0.88	0	0.29
RP11-212M6	53691	2303	20	8	1	0	1	0.12	0
RP11-89E9	97222	1712	12	7	1	0	0.88	0.14	0
RP11-34J1	133888	2424	23	8	0	1	1	0	0.12
RP11-237C24	4485	458	4	8	1	1	1	0.12	0.12
CTB-339E12	2704	2029	17	8	0	2	1	0	0.25
GS1-124N22	9746	856	7	8	0	0	1	0	0
RP11-51L20	70314	2404	23	8	1	0	1	0.12	0
RP11-7J22	57177	508	4	8	0	1	1	0	0.12
GS1-87A9	99973	964	7	7	0	0	0.88	0	0
RP11-183O1	6247	853	7	5	0	0	0.62	0	0
RP11-155P6	74424	514	4	8	0	0	1	0	0

Table W1. (continued)

Clone	kb	Position	Chrom	NumPresent.All	NumGain.All	NumLost.All	PropPresent.All	PropGain.All	PropLost.All
GS-236D3	49885	2293	20	8	1	0	1	0.12	0
RP11-23E5	17865	1477	11	8	0	0	1	0	0
RP11-94K16	47069	1822	14	8	0	1	1	0	0.12
RP11-143E20	7085	2374	23	4	1	0	0.5	0.25	0
RP11-46E14	78402	2115	17	8	4	0	1	0.5	0
CTD-2033A1	21572	2381	23	8	0	0	1	0	0
RP11-125A5	27502	1812	14	8	0	0	1	0	0
CTD-2012D15	104333	1603	11	6	1	0	0.75	0.17	0
RP11-141J7	32326	1224	9	8	0	2	1	0	0.25
RP11-122N14	30879	2383	23	7	0	0	0.88	0	0
CTD-2141C20	133558	709	5	8	0	1	1	0	0.12
RP11-131D12	99202	1152	8	8	5	0	1	0.62	0
CTB-462L7	53757	2088	17	7	2	0	0.88	0.29	0
RP11-135N5	2572	2028	17	7	0	2	0.88	0	0.29
CTB-162P22	137608	1014	7	8	0	2	1	0	0.25
RMC17P041	15334	2049	17	8	0	3	1	0	0.38
RP11-76G4	73781	2107	17	6	0	1	0.75	0	0.17
RP11-105K5	54464	1115	8	7	2	0	0.88	0.29	0
RP11-16O4	89217	1860	14	7	0	1	0.88	0	0.14
RP11-61I15	55043	1978	16	6	0	0	0.75	0	0
RP11-29O22	46591	1529	11	8	0	2	1	0	0.25
RP11-136D2	158297	594	4	8	1	2	1	0.12	0.25
RP11-12H11	76938	2006	16	5	0	3	0.62	0	0.6
RP11-119J20	173700	607	4	3	0	2	0.38	0	0.67
RP11-101H10	52180	1675	12	8	0	0	1	0	0
RP11-118F19	85348	2017	16	8	0	5	1	0	0.62
RP11-147L8	30640	1496	11	8	0	0	1	0	0
RP11-138G1	108239	1727	12	8	2	0	1	0.25	0
CTC-298G6	4279	1644	12	8	0	3	1	0	0.38
RP11-92H20	73302	1850	14	5	0	1	0.62	0	0.2
CTD-2238P18	46964	2284	20	7	0	0	0.88	0	0
RP11-74M9	4177	1642	12	7	1	3	0.88	0.14	0.43
RP11-20A10	50420	1976	16	7	0	0	0.88	0	0
RP11-126K7	45830	905	7	8	0	1	1	0	0.12
RP11-134L22	147169	584	4	8	0	0	1	0	0
RP11-238I24	102369	1877	14	7	0	0	0.88	0	0
RP11-100C21	42422	898	7	7	0	2	0.88	0	0.29
RP11-27C19	124748	564	4	7	0	1	0.88	0	0.14
RP11-100L12	28652	2053	17	6	1	0	0.75	0.17	0
RP11-115H17	27020	2330	21	8	0	0	1	0	0
RP11-75O22	36961	889	7	8	0	1	1	0	0.12
RP11-166G2	5615	1646	12	3	0	3	0.38	0	1
RP11-65C22	71251	2103	17	7	2	0	0.88	0.29	0
CTD-2006L14	5893	1200	9	6	0	0	0.75	0	0
DMPC-HFF#1-71E5	128710	1175	8	8	4	0	1	0.5	0
RP11-61B11	74959	2109	17	6	3	0	0.75	0.5	0
CTD-2149J10	212450	331	2	8	0	3	1	0	0.38
RP11-239C17	26142	474	4	7	0	1	0.88	0	0.14
RP11-183F2	68315	2403	23	8	1	0	1	0.12	0
RP11-74D19	28597	2331	21	8	0	0	1	0	0
RP11-144B4	98738	547	4	7	0	1	0.88	0	0.14
RP11-221G13	148175	2432	23	7	0	1	0.88	0	0.14
RP11-94A18	59444	2312	20	7	1	0	0.88	0.14	0
CTD-2280C3	127951	1303	9	8	0	0	1	0	0
GS-64G5	2494	2027	17	8	0	3	1	0	0.38
CTD-2039F9	3813	1452	11	8	0	0	1	0	0
RP11-210F15	36452	1095	8	7	0	5	0.88	0	0.71
GS1-74G18	0	2120	18	8	0	1	1	0	0.12
CTD-2104P11	75251	235	2	7	0	0	0.88	0	0
RP11-282J24	41663	1102	8	5	0	3	0.62	0	0.6
RP1-81F12	64000	2315	20	8	3	2	1	0.38	0.25
CTD-2199G5	53680	385	3	8	0	0	1	0	0
RP11-233L3	119309	414	3	7	1	0	0.88	0.14	0
CTD-2215K6	37403	197	2	8	0	1	1	0	0.12
RP11-295J19	11313	160	2	7	2	0	0.88	0.29	0
CTD-2183N21	35114	2347	21	7	1	0	0.88	0.14	0
RP11-203L15	161883	433	3	5	1	0	0.62	0.2	0
CTD-2121C12	130591	419	3	7	3	0	0.88	0.43	0
RP11-68A1	67703	226	2	4	0	0	0.5	0	0
RP11-67E18	189757	449	3	8	2	0	1	0.25	0
CTD-2113P14	68479	678	5	5	0	1	0.62	0	0.2
RP11-393J17	120112	258	2	8	1	1	1	0.12	0.12
RP11-139O22	131601	830	6	8	0	0	1	0	0



Table W1. (continued)

Clone	kb	Position	Chrom	NumPresent.All	NumGain.All	NumLost.All	PropPresent.All	PropGain.All	PropLost.All
RP11-750P5	102182	1600	11	8	0	1	1	0	0.12
RP11-17N4	119928	257	2	8	0	2	1	0	0.25
RP11-80G8	51358	1902	15	8	0	2	1	0	0.25
RP11-199O1	10284	8	1	8	0	0	1	0	0
RP11-782H1	18071	2186	19	8	0	0	1	0	0
RP11-103N21	29867	370	3	6	0	0	0.75	0	0
RP11-125P20	87787	62	1	8	0	2	1	0	0.25
RP11-227M19	3995	641	5	7	1	0	0.88	0.14	0
RP11-71L20	148497	84	1	8	2	0	1	0.25	0
CTD-2032A10	46419	1897	15	7	0	2	0.88	0	0.29
RP11-32C8	38463	199	2	8	2	1	1	0.25	0.12
RP11-15C9	31364	1887	15	5	0	2	0.62	0	0.4
CTB-41L13	222	1193	9	8	1	1	1	0.12	0.12
RP11-328L16	29382	186	2	8	0	0	1	0	0
RP11-51M23	104357	1604	11	8	1	0	1	0.12	0
RP11-171H24	165442	95	1	7	2	0	0.88	0.29	0
RP11-19L3	42181	2149	18	8	0	1	1	0	0.12
RP11-18F11	120417	556	4	8	0	0	1	0	0
RP11-159A22	187142	630	4	8	0	3	1	0	0.38
RP11-65G18	15319	2244	20	8	0	3	1	0	0.38
RP11-69F21	97131	1274	9	8	0	1	1	0	0.12
RP11-177L7	165405	599	4	8	0	4	1	0	0.5
RP11-1E23	58392	2311	20	8	2	0	1	0.25	0
RP11-89F16	90601	1701	12	7	2	0	0.88	0.29	0
RP11-142M16	147866	2431	23	8	0	1	1	0	0.12
RP11-17I9	9756	463	4	8	0	1	1	0	0.12
CTB-187M2	19537	2052	17	8	0	2	1	0	0.25
GS1-85G10	39895	893	7	8	1	0	1	0.12	0
RP11-80K1	104807	2414	23	7	0	1	0.88	0	0.14
RP11-20K4	66929	1554	11	4	0	0	0.5	0	0
CTB-148D3	24468	870	7	7	0	0	0.88	0	0
RP11-2K20	5865	851	7	5	0	0	0.62	0	0
RP11-69P19	75204	517	4	7	0	0	0.88	0	0
GS-251P4	97236	1950	15	8	0	1	1	0	0.12
RP11-33H21	9094	1461	11	8	0	0	1	0	0
RP11-137D17	49923	1824	14	8	0	0	1	0	0
RP11-26N16	874	2025	17	8	0	0	1	0	0
CTD-2002E24	36500	2387	23	7	1	0	0.88	0.14	0
RP11-152G22	19227	1802	14	8	0	0	1	0	0
RP11-56J24	31959	1662	12	8	1	1	1	0.12	0.12
CTD-2029K8	59011	1539	11	8	1	0	1	0.12	0
RP11-13C11	122569	1300	9	8	0	0	1	0	0
RP11-287E8	37039	2388	23	8	0	0	1	0	0
CTD-2086L13	112155	552	4	8	0	1	1	0	0.12
RP11-229L23	125521	1168	8	8	5	0	1	0.62	0
CTB-112F7	69205	2101	17	8	3	0	1	0.38	0
RP11-110H20	47395	2080	17	7	0	0	0.88	0	0
GS1-203O3	151001	1028	7	8	1	1	1	0.12	0.12
RMC7P069	19116	2051	17	8	2	1	1	0.25	0.12
RP11-84E24	70598	2102	17	8	3	0	1	0.38	0
RP11-111A6	103890	1793	13	6	0	0	0.75	0	0
RP11-32D22	124066	562	4	8	0	1	1	0	0.12
RP11-40D5	135249	571	4	3	0	0	0.38	0	0
RP11-121K16	72184	805	6	8	0	0	1	0	0
RP11-52B15	89723	809	6	8	0	2	1	0	0.25
RP11-14I4	100506	814	6	7	0	1	0.88	0	0.14
RP11-4H24	38625	2367	22	3	0	0	0.38	0	0
RP11-49M22	43367	2369	22	7	0	0	0.88	0	0
RP11-53C1	139759	573	4	1	0	1	0.12	0	1
RP11-26D15	141309	576	4	4	0	3	0.5	0	0.75
RP11-210F12	147357	585	4	8	0	2	1	0	0.25
RP11-25E13	104516	1794	13	6	1	0	0.75	0.17	0
RMC20B4130	52854	2299	20	6	0	0	0.75	0	0
RMC20B4087	53455	2302	20	4	1	0	0.5	0.25	0
RMCXP002	99377	2410	23	8	0	0	1	0	0
RP11-1L12	27041	1490	11	8	0	0	1	0	0
RP11-77M17	57148	1537	11	8	1	0	1	0.12	0
RP11-9K14	65048	1550	11	4	0	0	0.5	0	0
RP11-51M9	72013	1569	11	7	4	0	0.88	0.57	0
RP11-187A8	36560	1513	11	8	0	2	1	0	0.25
RP11-114G6	40341	1517	11	8	0	1	1	0	0.12
RP11-34F8	40887	1518	11	1	0	0	0.12	0	0
RP11-211J11	51011	1762	13	7	0	4	0.88	0	0.57

Table W1. (continued)

Clone	kb	Position	Chrom	NumPresent.All	NumGain.All	NumLost.All	PropPresent.All	PropGain.All	PropLost.All
RP11-165C10	75067	1575	11	8	3	0	1	0.38	0
RP11-119C13	75624	1576	11	7	3	0	0.88	0.43	0
RP11-7H7	78025	1581	11	8	3	0	1	0.38	0
RP11-102K15	83075	1584	11	4	2	0	0.5	0.5	0
RP11-119M23	85395	1588	11	7	1	0	0.88	0.14	0
RP11-131C11	85003	1587	11	8	2	0	1	0.25	0
RP11-163O18	92954	1591	11	8	3	1	1	0.38	0.12
RP11-183A20	106617	1795	13	8	1	1	1	0.12	0.12
RP11-611I7	107748	1796	13	8	1	1	1	0.12	0.12
RP11-230A15	109071	1797	13	8	1	1	1	0.12	0.12
RP11-11L13	11804	1327	10	7	1	1	0.88	0.14	0.14
RP11-66F24	22666	1341	10	8	1	0	1	0.12	0
RP11-42H6	111671	551	4	7	0	0	0.88	0	0
RP11-217E8	93920	1593	11	5	2	1	0.62	0.4	0.2
RP11-253I17	29077	1086	8	5	0	3	0.62	0	0.6
RP11-5J20	29319	1087	8	6	0	4	0.75	0	0.67
RP11-287N19	30494	1088	8	8	0	4	1	0	0.5
RP11-57I3	32470	1090	8	7	0	5	0.88	0	0.71
RP11-122D17	32637	1091	8	8	0	6	1	0	0.75
RP11-265K5	38125	1096	8	8	0	2	1	0	0.25
RP11-100B16	38257	1097	8	8	0	2	1	0	0.25
RP11-262I23	39745	1098	8	8	0	4	1	0	0.5
RP11-73M19	43001	1103	8	4	1	1	0.5	0.25	0.25
RP11-12L15	47823	1104	8	5	2	0	0.62	0.4	0
RP11-258C1	99843	1595	11	6	0	0	0.75	0	0
RP11-268N2	49118	1105	8	7	2	0	0.88	0.29	0
RP11-83O14	53073	1109	8	6	4	0	0.75	0.67	0
RP11-175H20	53297	1111	8	8	2	0	1	0.25	0
RP11-221P7	53605	1113	8	7	3	0	0.88	0.43	0
RP11-105K5	54464	1115	8	8	3	0	1	0.38	0
RP11-99M6	55552	1117	8	8	2	0	1	0.25	0
RP11-172D2	55737	1119	8	7	3	0	0.88	0.43	0
RP11-213K11	56973	1121	8	7	1	0	0.88	0.14	0
RP11-258B14	61151	1123	8	8	3	0	1	0.38	0
RP11-252M13	64362	1125	8	7	3	1	0.88	0.43	0.14
RP11-5G24	101182	1596	11	5	0	0	0.62	0	0
RP11-92M10	65694	1126	8	6	4	0	0.75	0.67	0
RP11-282D10	67298	1127	8	6	4	0	0.75	0.67	0
RP11-212P10	67392	1128	8	8	5	0	1	0.62	0
RP11-271O1	67480	1129	8	8	0	1	1	0	0.12
RP11-107F3	74222	1131	8	6	4	0	0.75	0.67	0
RP11-69N24	106039	405	3	7	0	0	0.88	0	0
RP11-166C10	109808	407	3	8	1	0	1	0.12	0
RP11-276O11	105295	1606	11	6	0	0	0.75	0	0
RP11-85F4	105059	1605	11	8	0	0	1	0	0
RP11-42L18	107455	1607	11	5	0	1	0.62	0	0.2
RP11-2F21	109450	1610	11	8	1	0	1	0.12	0
RP11-262J9	111244	1612	11	8	1	0	1	0.12	0
RP11-277I21	28963	1085	8	5	0	4	0.62	0	0.8
RP11-219P10	137444	421	3	6	1	0	0.75	0.17	0
RP11-235B24	50120	38	1	7	0	0	0.88	0	0
RP11-195G13	53698	39	1	7	0	0	0.88	0	0
RP11-149K24	56978	41	1	8	0	1	1	0	0.12
RP11-8F24	60652	44	1	7	0	0	0.88	0	0
RP11-246N19	63825	49	1	6	0	0	0.75	0	0
RP11-265C4	63708	48	1	7	0	1	0.88	0	0.14
RP11-80G24	77139	53	1	8	0	0	1	0	0
RP11-267M21	79392	55	1	5	0	1	0.62	0	0.2
RP11-78E18	82691	59	1	4	0	0	0.5	0	0
RP11-260A24	110123	71	1	5	0	0	0.62	0	0
RP11-162J10	138742	422	3	7	3	0	0.88	0.43	0
RP11-150K20	110631	73	1	5	0	0	0.62	0	0
RP11-82A16	111807	74	1	8	0	2	1	0	0.25
RP11-72M14	112456	75	1	8	0	1	1	0	0.12
RP11-254K1	114325	76	1	7	0	0	0.88	0	0
RP11-137M19	156282	85	1	8	2	0	1	0.25	0
RP11-97G24	157693	86	1	8	1	0	1	0.12	0
RP11-260G23	159634	88	1	5	1	0	0.62	0.2	0
RP11-154A22	192545	109	1	8	4	0	1	0.5	0
RP11-249C10	197403	110	1	8	3	0	1	0.38	0
RP11-150L7	198434	111	1	5	1	0	0.62	0.2	0
RP11-166D18	140781	424	3	7	4	0	0.88	0.57	0
RP11-57I17	204829	119	1	8	1	0	1	0.12	0

Table W1. (continued)

Clone	kb	Position	Chrom	NumPresent.All	NumGain.All	NumLost.All	PropPresent.All	PropGain.All	PropLost.All
RP11-45F21	205468	120	1	7	2	0	0.88	0.29	0
RP11-123O6	208484	123	1	8	2	0	1	0.25	0
RP11-130I13	236590	139	1	7	1	2	0.88	0.14	0.29
RP11-210F8	238647	140	1	8	1	2	1	0.12	0.25
RP11-188A4	239937	143	1	8	1	2	1	0.12	0.25
RP11-44C14	114590	1295	9	8	0	0	1	0	0
RP11-196F13	173518	439	3	7	2	0	0.88	0.29	0
RP11-28L24	112447	821	6	8	0	2	1	0	0.25
RP11-75C8	112006	820	6	7	0	2	0.88	0	0.29
RP11-24F12	115327	824	6	8	0	1	1	0	0.12
RP11-43B19	160895	839	6	8	1	1	1	0.12	0.12
RP11-82D16	2009	2	1	8	1	1	1	0.12	0.12
RP11-41K9	85079	1254	9	8	0	0	1	0	0
RP11-32D4	11586	1204	9	6	0	1	0.75	0	0.17
RP11-22C13	80767	1249	9	8	0	0	1	0	0
RP11-20E13	97287	1275	9	8	1	1	1	0.12	0.12
RP11-20B20	83093	1252	9	7	0	1	0.88	0	0.14
CTC-264L4	114412	981	7	8	1	0	1	0.12	0
CTB-162H9	127287	998	7	8	1	1	1	0.12	0.12
CTB-102E19	87477	950	7	8	0	0	1	0	0
GS1-124K10	31485	877	7	7	0	0	0.88	0	0
CTB-23D20	27651	873	7	8	0	0	1	0	0
GS1-183H7	8628	855	7	8	0	0	1	0	0
RP11-40A7	129693	1306	9	5	0	0	0.62	0	0
CTB-79L9	92211	956	7	8	0	1	1	0	0.12
GS1-174H8	32989	880	7	8	0	0	1	0	0
CTC-325E15	67608	926	7	6	0	0	0.75	0	0
GS1-119B11	139192	1017	7	5	1	1	0.62	0.2	0.2
GS1-207L18	152990	1029	7	8	1	2	1	0.12	0.25
RMC07P028	143474	1021	7	8	0	0	1	0	0
RP11-96I11	12905	2138	18	6	0	1	0.75	0	0.17
RP11-16A21	12587	2137	18	6	0	1	0.75	0	0.17
RP11-59E12	19622	2142	18	8	0	1	1	0	0.12
RP11-26H9	6701	2232	20	8	0	3	1	0	0.38
RP11-39L9	98274	1280	9	5	0	0	0.62	0	0
RP11-32O9	8790	2233	20	7	0	3	0.88	0	0.43
RP11-40J24	11037	2239	20	8	0	3	1	0	0.38
RP11-75C17	45625	2280	20	8	0	0	1	0	0
RP11-109C3	46846	2283	20	7	0	0	0.88	0	0
RP11-5P14	50072	2294	20	8	2	0	1	0.25	0
RP11-118C13	32970	1225	9	8	0	0	1	0	0
RP11-102F20	116348	1298	9	8	0	1	1	0	0.12
RP11-39J22	106020	1284	9	8	2	1	1	0.25	0.12
RP11-39I6	36175	1231	9	5	0	0	0.62	0	0
RP11-37F22	34971	1229	9	5	0	0	0.62	0	0
RP11-34J23	93385	1268	9	5	0	0	0.62	0	0
RP11-33O15	22823	1216	9	5	2	1	0.62	0.4	0.2
RP11-32M4	105808	1283	9	6	0	1	0.75	0	0.17
RP11-106N7	96225	1271	9	4	0	0	0.5	0	0
RP11-154M9	36204	1232	9	8	0	0	1	0	0
RP11-56C1	75457	1245	9	8	0	1	1	0	0.12
RP11-235F7	27537	1220	9	8	2	1	1	0.25	0.12
RP11-165H19	34590	1228	9	8	0	0	1	0	0
RP11-264O11	10578	1203	9	8	0	3	1	0	0.38
RP11-223A21	92564	1264	9	8	0	0	1	0	0
RP11-229N14	115037	1296	9	8	1	1	1	0.12	0.12
RP11-21H16	135878	1186	8	6	4	0	0.75	0.67	0
RP11-122H7	138273	1189	8	8	4	0	1	0.5	0
RP11-4B2	97957	1277	9	8	0	0	1	0	0
RP11-88J16	86475	1256	9	5	0	1	0.62	0	0.2
RP11-142P5	126543	1171	8	8	5	0	1	0.62	0
RP11-150N13	126333	1169	8	8	5	0	1	0.62	0
RP11-131O16	99005	1151	8	7	3	0	0.88	0.43	0
RP11-94M13	132829	1178	8	8	5	0	1	0.62	0
RP11-158G1	133112	1180	8	8	5	0	1	0.62	0
RP11-184M21	133963	1182	8	8	5	0	1	0.62	0
RP11-194B9	28104	475	4	4	0	1	0.5	0	0.25
RP11-210B2	28680	476	4	8	0	2	1	0	0.25
RP11-109P3	48340	498	4	8	0	0	1	0	0
RP11-180G13	30741	481	4	7	0	2	0.88	0	0.29
RP11-81P13	108423	1285	9	5	0	1	0.62	0	0.2
RP11-176I4	33162	482	4	6	0	1	0.75	0	0.17
RP11-85B10	35527	483	4	6	0	1	0.75	0	0.17

Table W1. (continued)

Clone	kb	Position	Chrom	NumPresent.All	NumGain.All	NumLost.All	PropPresent.All	PropGain.All	PropLost.All
RP11-188C10	52638	1108	8	7	3	0	0.88	0.43	0
RP11-221P7	53605	1113	8	8	4	0	1	0.5	0
RP11-99M6	55552	1117	8	8	3	0	1	0.38	0
RP11-149G12	52199	1107	8	8	2	0	1	0.25	0
RP11-34C20	11085	464	4	8	0	1	1	0	0.12
RP11-74F15	81643	1251	9	8	0	0	1	0	0
RP11-80F13	105543	1282	9	7	0	0	0.88	0	0
RP11-189E11	135163	1184	8	8	5	0	1	0.62	0
RP11-19O14	68683	1238	9	8	0	1	1	0	0.12
RP11-150L1	115789	1297	9	7	1	0	0.88	0.14	0
RP11-128O12	91550	1263	9	8	0	1	1	0	0.12
RP11-171P21	15196	465	4	7	0	1	0.88	0	0.14
RP11-105H21	54178	1832	14	8	0	1	1	0	0.12
RP11-105F9	32327	1816	14	8	0	0	1	0	0
RP11-221K16	52877	1829	14	8	0	0	1	0	0
RP11-189N14	22529	1806	14	8	0	1	1	0	0.12
RP11-172G1	53522	1830	14	8	0	1	1	0	0.12
RP11-170D9	23859	1809	14	8	0	0	1	0	0
RP11-256C2	22529	1807	14	8	0	0	1	0	0
RP11-189H22	39841	1820	14	7	0	0	0.88	0	0
RP11-262M8	50687	1826	14	8	0	0	1	0	0
RP11-29B7	53522	1831	14	7	0	1	0.88	0	0.14
RP11-288G5	37359	1818	14	5	0	1	0.62	0	0.2
RP11-12P7	52008	1828	14	8	0	0	1	0	0
RP11-10P7	54889	1833	14	8	0	1	1	0	0.12
RP11-21P8	55088	1834	14	4	0	1	0.5	0	0.25
RP11-2K1	29790	1814	14	5	0	0	0.62	0	0
RP11-14O20	19152	1801	14	8	0	0	1	0	0
RP11-52O23	46240	1821	14	5	0	0	0.62	0	0
RP11-68M15	21467	1805	14	7	0	0	0.88	0	0
RP11-70F9	21199	1804	14	6	0	0	0.75	0	0
RP11-48L1	29365	1813	14	8	0	0	1	0	0
RP11-84D12	19455	1803	14	7	0	0	0.88	0	0
RP11-234L24	67755	510	4	6	0	0	0.75	0	0
RP11-82A8	50570	1825	14	8	0	0	1	0	0
CTB-142O24	6452	2037	17	7	0	4	0.88	0	0.57
CTB-194B18	10066	2046	17	8	0	4	1	0	0.5
CTB-163O5	33343	2057	17	5	1	0	0.62	0.2	0
RP5-1137E3	43198	2073	17	6	0	0	0.75	0	0
RP5-1071I14	48029	2081	17	7	5	0	0.88	0.71	0
RP5-29G21	31435	2056	17	8	2	0	1	0.25	0
RP11-111K19	68456	511	4	8	0	1	1	0	0.12
RP11-144I19	76597	523	4	6	0	0	0.75	0	0
RP11-105F22	77400	524	4	7	0	0	0.88	0	0
RP11-17P19	79324	525	4	8	0	1	1	0	0.12
RP11-221M10	80786	526	4	8	0	1	1	0	0.12
RP11-90K14	49846	1823	14	3	0	0	0.38	0	0
RP5-32P19	48315	2082	17	7	4	0	0.88	0.57	0
RP11-11P20	128976	567	4	8	0	2	1	0	0.25
RP11-14N24	131151	568	4	3	0	0	0.38	0	0
RP11-130O10	87738	535	4	8	0	0	1	0	0
RP11-131O10	83433	529	4	5	0	1	0.62	0	0.2
RP11-7G22	84625	531	4	6	0	1	0.75	0	0.17
RP11-36G19	85428	532	4	8	0	1	1	0	0.12
RP11-31I17	86767	533	4	8	0	0	1	0	0
RP11-17P8	89864	539	4	7	0	1	0.88	0	0.14
RP11-62A6	122776	1301	9	8	0	0	1	0	0
RP11-62H18	4576	1197	9	8	1	1	1	0.12	0.12
RP5-859O20	9012	2045	17	7	1	1	0.88	0.14	0.14
RP11-65B23	85712	1255	9	8	0	0	1	0	0
RP11-61I3	37608	1233	9	8	4	0	1	0.5	0
RP11-57O13	108906	1286	9	7	0	1	0.88	0	0.14
RP11-18F1	99970	1714	12	8	2	0	1	0.25	0
RP11-1K22	129550	1737	12	8	1	1	1	0.12	0.12
RP11-24N12	2978	1641	12	8	1	3	1	0.12	0.38
RP11-25K5	48129	1669	12	7	0	0	0.88	0	0
RP11-29G23	43909	1664	12	8	0	1	1	0	0.12
RP11-31A19	93918	1707	12	8	2	0	1	0.25	0
RP11-38F11	32989	1663	12	8	3	1	1	0.38	0.12
CTB-11O23	2896	2036	17	8	0	1	1	0	0.12
RP11-39G24	57375	1680	12	7	0	0	0.88	0	0
RP11-32K17	50298	1671	12	8	0	0	1	0	0
RP11-44K16	62866	1840	14	8	0	1	1	0	0.12

Table W1. (continued)

Clone	kb	Position	Chrom	NumPresent.All	NumGain.All	NumLost.All	PropPresent.All	PropGain.All	PropLost.All
RP11-46L17	77551	1855	14	8	2	1	1	0.25	0.12
RP11-5J6	66706	1691	12	8	0	1	1	0	0.12
RP11-47P10	145551	583	4	6	0	0	0.75	0	0
RP11-122I3	145023	580	4	8	0	0	1	0	0
RP5-1029F21	417	2022	17	8	0	2	1	0	0.25
RP11-120B2	87369	534	4	5	0	0	0.62	0	0
RP11-6K22	120384	555	4	8	1	0	1	0.12	0
RP11-149A7	133904	569	4	8	0	1	1	0	0.12
RP11-94J9	134574	570	4	8	0	1	1	0	0.12
RP11-52O3	128592	566	4	7	0	1	0.88	0	0.14
RP11-84M15	155826	592	4	4	0	1	0.5	0	0.25
RP11-55P9	25426	1218	9	8	2	0	1	0.25	0
RP11-83G24	103739	1721	12	8	2	0	1	0.25	0
RP11-80F23	94298	1868	14	8	0	1	1	0	0.12
RP11-84G6	86618	1856	14	8	0	1	1	0	0.12
RP11-282G15	94498	1709	12	8	1	0	1	0.12	0
RP11-252C8	102582	1717	12	8	2	0	1	0.25	0
RP11-233G1	14833	1650	12	8	1	3	1	0.12	0.38
RP11-272L6	5221	1645	12	8	1	3	1	0.12	0.38
RP11-276L24	59176	1681	12	8	0	0	1	0	0
RP11-270J9	47439	1666	12	8	0	1	1	0	0.12
RP11-101A21	152942	589	4	5	0	0	0.62	0	0
GS1-35C5	69638	930	7	8	0	1	1	0	0.12
CTB-22K14	108069	976	7	8	1	1	1	0.12	0.12
GS1-6E1	53465	915	7	7	0	1	0.88	0	0.14
RP11-215G13	93273	1706	12	8	1	0	1	0.12	0
RP11-220L3	63254	1686	12	8	0	1	1	0	0.12
RP11-230I13	78276	1697	12	8	1	0	1	0.12	0
GS1-220D8	46025	907	7	8	0	1	1	0	0.12
CTB-111H21	29730	876	7	8	0	1	1	0	0.12
GS1-180P12	135996	1008	7	8	2	1	1	0.25	0.12
CTB-102E19	87477	950	7	8	0	0	1	0	0
RP11-93I2	156061	593	4	8	0	1	1	0	0.12
GS1-202O8	49775	911	7	6	0	2	0.75	0	0.33
GS-32I19	55630	2308	20	8	1	0	1	0.12	0
GS-127C11	16201	1963	16	8	0	0	1	0	0
GS-93M10	86745	949	7	8	2	0	1	0.25	0
RP11-160D13	6528	1955	16	8	0	1	1	0	0.12
GS-619B4	55080	505	4	8	0	0	1	0	0
GS-400H17	47659	1667	12	8	3	0	1	0.38	0
RP11-180J5	148000	586	4	7	0	0	0.88	0	0
RP11-79E2	143222	578	4	7	0	1	0.88	0	0.14
RP11-52I10	31664	1223	9	8	0	1	1	0	0.12
RP11-44O3	89667	1262	9	8	0	1	1	0	0.12
RP11-46E19	113030	1294	9	8	1	1	1	0.12	0.12
RP11-50C21	10432	1202	9	7	0	1	0.88	0	0.14
GS-246M20	55015	917	7	8	0	2	1	0	0.25
GS-8P19	714	2122	18	8	0	1	1	0	0.12
GS-561N1	56427	1679	12	8	0	0	1	0	0
GS-265E19	38919	2067	17	8	1	0	1	0.12	0
RMC01P057	27560	23	1	7	1	0	0.88	0.14	0
RP1-97B16	180273	444	3	8	4	0	1	0.5	0
GS-415O24	117881	1620	11	8	2	0	1	0.25	0
RP11-246G22	81509	2407	23	4	0	0	0.5	0	0
RP11-77D22	91772	2408	23	7	0	1	0.88	0	0.14
GS-59B4	152455	836	6	7	2	0	0.88	0.29	0
RP5-1097P11	65810	2400	23	7	1	0	0.88	0.14	0
GS1-8A1	44253	902	7	7	0	0	0.88	0	0
CTB-36F16	69400	1565	11	8	3	1	1	0.38	0.12
GS-137C7	524	1449	11	7	0	1	0.88	0	0.14
RP11-69E3	94706	1710	12	8	3	0	1	0.38	0
RP11-83I2	87070	1857	14	4	0	0	0.5	0	0
RP11-64J22	25789	1656	12	8	2	1	1	0.25	0.12
RP11-287D11	108043	1726	12	3	3	0	0.38	1	0
GS1-124N22	9746	856	7	7	0	1	0.88	0	0.14
RP11-140K16	84216	2013	16	8	1	2	1	0.12	0.25
RP11-284G2	78534	2007	16	8	1	4	1	0.12	0.5
RP11-52E21	69052	1998	16	7	0	2	0.88	0	0.29
GS1-199H20	131260	1004	7	8	3	1	1	0.38	0.12
RP11-109D4	18598	1965	16	7	0	1	0.88	0	0.14
RP11-48I18	49514	1975	16	6	0	0	0.75	0	0
RP11-283M20	18469	1964	16	7	0	1	0.88	0	0.14
RP11-186E3	20266	1966	16	8	1	1	1	0.12	0.12



Table W1. (continued)

Clone	kb	Position	Chrom	NumPresent.All	NumGain.All	NumLost.All	PropPresent.All	PropGain.All	PropLost.All
RP11-18H23	31429	1972	16	7	0	0	0.88	0	0
RP11-49M6	11608	1960	16	8	0	0	1	0	0
CTC-232O9	43022	900	7	8	1	0	1	0.12	0
CTB-66D11	104127	969	7	8	2	0	1	0.25	0
CTB-168O22	18557	864	7	8	0	1	1	0	0.12
CTC-329F6	2141	844	7	8	1	0	1	0.12	0
GS1-98-L2	12600	359	3	8	2	1	1	0.25	0.12
RP11-204E18	31616	1973	16	8	0	1	1	0	0.12
RP11-192K24	89681	1861	14	7	0	1	0.88	0	0.14
RP11-285P21	76535	1854	14	8	0	1	1	0	0.12
RP11-2K15	16360	2377	23	8	1	1	1	0.12	0.12
RP11-180F16	18845	2379	23	8	0	0	1	0	0
RP11-46A23	30476	2382	23	5	0	0	0.62	0	0
RP11-128B23	18196	2378	23	8	0	1	1	0	0.12
RP11-59A12	84665	2015	16	8	0	4	1	0	0.5
RP11-122P17	85736	2018	16	8	1	5	1	0.12	0.62
RP11-42F12	14414	2047	17	7	0	4	0.88	0	0.57
RP11-52N13	43194	2072	17	3	0	1	0.38	0	0.33
RP11-146J7	25710	1970	16	7	0	1	0.88	0	0.14
RP11-41E12	71815	2104	17	8	1	0	1	0.12	0
RP11-160F4	79067	2117	17	3	2	0	0.38	0.67	0
RP11-145C11	73659	2106	17	6	0	0	0.75	0	0
RP11-87N6	38681	2063	17	7	1	0	0.88	0.14	0
RP11-58O9	38874	2066	17	8	1	0	1	0.12	0
RP11-55C13	8598	2044	17	8	0	4	1	0	0.5
RP11-58O8	34027	2061	17	8	0	0	1	0	0
RP11-165M24	80673	2118	17	5	2	0	0.62	0.4	0
RP11-266I24	41355	2070	17	8	3	0	1	0.38	0
RP11-122D8	178299	612	4	6	0	1	0.75	0	0.17
RP11-132M21	57967	1982	16	7	0	1	0.88	0	0.14
RP11-125M9	183250	618	4	8	0	3	1	0	0.38
RP11-244K2	183090	617	4	6	0	2	0.75	0	0.33
RP11-51O4	15593	2245	20	8	0	3	1	0	0.38
RP11-138A15	36736	2262	20	8	1	0	1	0.12	0
RP11-134I8	31323	2257	20	7	2	0	0.88	0.29	0
RP11-171I8	48472	1533	11	7	0	1	0.88	0	0.14
RP11-222G13	48472	1534	11	2	0	0	0.25	0	0
RP11-5A19	66841	1992	16	8	0	2	1	0	0.25
RP11-3A9	66424	1991	16	7	0	2	0.88	0	0.29
RP11-109J21	56005	1980	16	8	0	3	1	0	0.38
RP11-246M14	60574	1985	16	8	0	2	1	0	0.25
RP11-50C5	61469	1986	16	7	0	0	0.88	0	0
RP11-266F13	67172	1847	14	4	0	2	0.5	0	0.5
RP11-205I14	59240	1541	11	7	2	0	0.88	0.29	0
RP11-31B6	14999	2316	21	8	0	0	1	0	0
RP11-13J15	24047	2323	21	8	0	0	1	0	0
RP11-65I1	129120	2421	23	8	0	1	1	0	0.12
RP11-223K4	101504	2413	23	7	0	1	0.88	0	0.14
RP11-224D23	109768	2416	23	8	0	1	1	0	0.12
RP11-24P8	41939	2391	23	8	0	0	1	0	0
RP11-91J20	73363	2406	23	8	1	0	1	0.12	0
RP11-147G1	63455	2397	23	7	0	0	0.88	0	0
RP11-191P7	2948	848	7	8	0	1	1	0	0.12
RP11-23D23	807	843	7	8	1	1	1	0.12	0.12
RP11-91P18	74949	1574	11	7	0	1	0.88	0	0.14
RP11-161C7	6187	852	7	7	1	0	0.88	0.14	0
RP11-128J9	9820	858	7	7	1	1	0.88	0.14	0.14
RP11-123E5	17301	860	7	7	0	0	0.88	0	0
RP11-276A17	31408	2339	21	7	0	0	0.88	0	0
RP11-125H1	31281	2337	21	8	0	0	1	0	0
RP4-763A4	129037	1304	9	8	0	0	1	0	0
RP5-1081P3	57550	2092	17	8	1	0	1	0.12	0
RMC12P001	56152	1678	12	8	2	0	1	0.25	0
RP5-1073F15	58499	2094	17	8	2	0	1	0.25	0
RP1-128I8	69242	1561	11	8	3	0	1	0.38	0
RP11-203L17	186965	629	4	8	0	2	1	0	0.25
RP11-262B7	11739	1056	8	8	0	7	1	0	0.88
CTD-2037D17	30769	1746	13	8	0	1	1	0	0.12
CTD-2173J2	46814	1759	13	8	0	3	1	0	0.38
CTD-2272E1	89204	1945	15	8	1	3	1	0.12	0.38
CTD-2170E19	27290	1219	9	8	2	0	1	0.25	0
CTD-2058B1	4191	1643	12	8	2	3	1	0.25	0.38
CTD-2042H22	54782	1677	12	8	0	0	1	0	0

Table W1. (continued)

Clone	kb	Position	Chrom	NumPresent.All	NumGain.All	NumLost.All	PropPresent.All	PropGain.All	PropLost.All
RP11-256M13	185847	625	4	6	0	0	0.75	0	0
RP11-267E24	186282	627	4	7	0	3	0.88	0	0.43
RP11-228F3	186349	628	4	8	0	2	1	0	0.25
RP11-213A19	187817	632	4	8	0	1	1	0	0.12
RP11-237D3	188988	634	4	7	0	3	0.88	0	0.43
CTD-2024C11	113603	253	2	8	0	2	1	0	0.25
CTD-2093I24	21883	2358	22	7	0	0	0.88	0	0
CTD-2094C6	38791	2064	17	8	1	0	1	0.12	0
CTD-2222B22	116614	1618	11	8	0	0	1	0	0
CTD-2040C2	14563	649	5	8	2	1	1	0.25	0.12
CTD-2079J2	108552	693	5	7	0	5	0.88	0	0.71
RP11-15L23	50725	913	7	8	0	1	1	0	0.12
RP11-173P9	17341	861	7	8	0	0	1	0	0
RP11-17H7	27914	874	7	8	0	0	1	0	0
RP11-66O14	25979	871	7	8	0	0	1	0	0
RP11-243C6	22456	868	7	8	0	0	1	0	0
CTD-2035K18	12600	360	3	8	0	1	1	0	0.12
RP11-138E20	36331	885	7	8	0	0	1	0	0
RP11-46J20	106748	973	7	8	0	0	1	0	0
RP11-148L14	34632	1506	11	8	1	2	1	0.12	0.25
RP11-222J5	5349	1454	11	7	0	0	0.88	0	0
RP11-193O9	31328	1498	11	8	0	2	1	0	0.25
RP11-230G20	25057	1487	11	7	0	0	0.88	0	0
RP11-96H21	30853	2335	21	5	1	0	0.62	0.2	0
RP11-5N20	31577	2341	21	8	1	0	1	0.12	0
RP11-54F16	32693	2343	21	8	1	0	1	0.12	0
CTD-2118F18	36702	782	6	8	1	0	1	0.12	0
CTD-2132L9	38010	373	3	8	0	0	1	0	0
CTD-2018P8	20510	768	6	8	1	0	1	0.12	0
CTD-2175D15	59791	394	3	8	0	0	1	0	0
CTD-2055G11	113341	1730	12	8	2	0	1	0.25	0
CTD-2035H5	110302	1728	12	7	2	0	0.88	0.29	0
CTD-2003I23	110804	1729	12	8	2	0	1	0.25	0
CTD-2285J6	4543	2227	20	8	0	0	1	0	0
CTD-2055A23	63533	1843	14	8	0	2	1	0	0.25
CTD-2125H12	49494	2290	20	8	1	0	1	0.12	0
CTD-2026B15	46209	2281	20	8	0	0	1	0	0
CTD-2035F24	26175	2324	21	7	0	2	0.88	0	0.29
CTD-2009O18	38827	2065	17	8	1	0	1	0.12	0
CTD-2128D14	21392	15	1	8	1	1	1	0.12	0.12
CTD-2102L4	5091	2229	20	8	0	3	1	0	0.38
CTD-2111G2	3781	2225	20	8	0	1	1	0	0.12
RP11-178P2	34996	884	7	8	0	0	1	0	0
RP11-128O3	33387	881	7	8	1	0	1	0.12	0
RP11-95N10	32643	879	7	8	0	1	1	0	0.12
RP11-22M18	84156	947	7	8	0	1	1	0	0.12
RP11-193J17	71146	931	7	8	0	1	1	0	0.12
RP11-137E8	73357	936	7	8	0	0	1	0	0
RP11-35P20	71432	933	7	8	0	1	1	0	0.12
RP11-219N12	79459	940	7	6	0	1	0.75	0	0.17
RP11-56C16	77697	938	7	5	0	0	0.62	0	0
RP11-35H4	77250	937	7	5	0	0	0.62	0	0
CTD-2032H1	3292	1953	16	3	0	0	0.38	0	0
RP11-96O16	68989	929	7	8	1	0	1	0.12	0
RP11-115O3	80121	943	7	5	0	0	0.62	0	0
RP11-86P18	107908	975	7	6	1	0	0.75	0.17	0
RP11-77E2	107079	974	7	3	0	0	0.38	0	0
RP11-32H11	128242	1438	10	5	0	1	0.62	0	0.2
RP11-92J13	111200	978	7	6	0	0	0.75	0	0
RP11-88K4	136029	1009	7	7	1	1	0.88	0.14	0.14
RP11-29B3	136916	1012	7	8	1	0	1	0.12	0
RP11-22G20	136600	1010	7	8	1	0	1	0.12	0
RP11-172L23	138472	1016	7	7	0	1	0.88	0	0.14
RP11-41F23	67265	925	7	8	0	1	1	0	0.12
RP11-269N18	137683	1015	7	7	0	1	0.88	0	0.14
RP11-118J20	132809	1005	7	8	1	0	1	0.12	0
RP11-140I14	134505	1007	7	8	0	0	1	0	0
RP11-137O4	137509	1013	7	8	0	0	1	0	0
RP11-148F17	136629	1011	7	8	1	2	1	0.12	0.25
RP11-188A12	142994	1020	7	8	0	1	1	0	0.12
RP11-126A20	82609	945	7	8	0	0	1	0	0
RP11-170H15	68627	928	7	8	1	0	1	0.12	0
RP11-45N18	61790	921	7	8	0	2	1	0	0.25

Table W1. (continued)

Clone	kb	Position	Chrom	NumPresent.All	NumGain.All	NumLost.All	PropPresent.All	PropGain.All	PropLost.All
RP11-97P11	55206	918	7	8	0	2	1	0	0.25
RP11-114E12	67811	927	7	8	0	1	1	0	0.12
RP11-251I15	55349	920	7	8	0	1	1	0	0.12
RP11-90O18	63546	922	7	8	0	0	1	0	0
RP11-46O13	87990	953	7	4	0	0	0.5	0	0
RP11-35B6	128500	1000	7	4	0	0	0.5	0	0
RP11-38P11	129517	1003	7	7	1	0	0.88	0.14	0
RP11-66F23	127910	999	7	8	2	0	1	0.25	0
RP11-48O1	121395	994	7	4	0	1	0.5	0	0.25
RP11-3L10	120592	992	7	8	0	3	1	0	0.38
RP11-19G12	129047	1002	7	8	2	0	1	0.25	0
RP11-93J6	31815	878	7	8	0	0	1	0	0
RP11-112P4	121089	993	7	8	0	2	1	0	0.25
RP11-9C22	127170	997	7	8	1	1	1	0.12	0.12
CTD-2107N14	48741	2395	23	7	1	0	0.88	0.14	0
RP11-126B8	92418	957	7	8	0	0	1	0	0
CTD-2006G2	99773	2412	23	8	0	0	1	0	0
CTD-2047N18	145658	2427	23	6	0	1	0.75	0	0.17
CTD-2015J18	127258	2420	23	8	0	1	1	0	0.12
CTD-2051F22	42878	2392	23	7	0	0	0.88	0	0
CTD-2082H4	146779	2429	23	8	0	1	1	0	0.12
CTB-262I19	58714	2096	17	8	0	0	1	0	0
CTB-570D13	61145	2097	17	8	2	0	1	0.25	0
CTB-305D20	45331	2076	17	8	2	0	1	0.25	0
CTB-244K7	65039	2098	17	8	2	0	1	0.25	0
CTB-209F23	78502	2116	17	8	3	0	1	0.38	0
RP11-72J24	104174	970	7	3	0	0	0.38	0	0
GS1-232B23	0	1	1	3	0	1	0.38	0	0.33
GS1-167K11	247000	144	1	5	0	0	0.62	0	0
GS1-8L3	0	145	2	8	2	1	1	0.25	0.12
CTB-172I13	244000	350	2	8	0	3	1	0	0.38
CTB-228K22	0	351	3	8	0	0	1	0	0
CTB-110J24	10159	357	3	8	0	0	1	0	0
GS1-56H22	200000	453	3	8	1	0	1	0.12	0
RP11-10D8	98035	963	7	8	0	0	1	0	0
RP11-127F3	94735	960	7	8	0	1	1	0	0.12
RP11-32C15	95227	961	7	7	0	0	0.88	0	0
RP11-61C18	106305	971	7	7	0	0	0.88	0	0
RP11-213E22	100265	965	7	8	0	0	1	0	0
RP11-49N15	92475	958	7	5	0	1	0.62	0	0.2
GS1-118B13	0	454	4	7	0	1	0.88	0	0.14
RP1-164D18	188	842	7	6	1	0	0.75	0.17	0
RP1-8L24	115449	984	7	7	1	1	0.88	0.14	0.14
RP1-268L15	115627	985	7	8	0	1	1	0	0.12
GS1-23B11	0	1310	10	7	1	2	0.88	0.14	0.29
RP11-2044M21	89288	1394	10	7	0	4	0.88	0	0.57
GS1-261B16	136000	1446	10	8	0	1	1	0	0.12
CTD-222O19	64314	1547	11	8	2	0	1	0.25	0
RP11-964M3	107676	1608	11	8	1	0	1	0.12	0
RP1-26N8	135000	1638	11	6	1	0	0.75	0.17	0
GS1-124K20	0	1639	12	5	1	1	0.62	0.2	0.2
GS1-31J3	192000	635	4	7	0	1	0.88	0	0.14
RP1-221K18	131939	1738	12	8	2	0	1	0.25	0
RP1-58D13	46852	1760	13	8	0	3	1	0	0.38
RP1-269F22	49043	1761	13	8	0	7	1	0	0.88
RP1-01L16	114000	1800	13	8	2	0	1	0.25	0
RP11-47P23	105131	1878	14	7	2	0	0.88	0.29	0
Vysis-SNRPN_176A	22771	1881	15	8	0	0	1	0	0
RP11-135B17	46788	2353	21	8	0	0	1	0	0
RP1-15J16	15547	2354	22	8	0	0	1	0	0
RP1-238C15	17717	2355	22	8	0	0	1	0	0
CTD-2231J3	28415	2360	22	8	0	0	1	0	0
RP1-24H17	0	636	5	5	0	1	0.62	0	0.2
CTA-799F10	49211	2371	22	4	0	0	0.5	0	0
RP11-839D20	0	2372	23	8	0	0	1	0	0
RP11-243M13	202081	116	1	8	4	0	1	0.5	0
RP11-104A2	207093	122	1	8	2	0	1	0.25	0
RP11-111P21	45301	378	3	7	0	0	0.88	0	0
RP11-94D19	60739	396	3	8	0	0	1	0	0
CTC-317F16	112258	695	5	7	0	4	0.88	0	0.57
RP1-98O22	137881	714	5	5	0	0	0.62	0	0
RP1-240G13	182000	751	5	8	1	1	1	0.12	0.12
GS1-196I5	0	752	6	8	1	1	1	0.12	0.12

Table W1. (continued)

Clone	kb	Position	Chrom	NumPresent.All	NumGain.All	NumLost.All	PropPresent.All	PropGain.All	PropLost.All
RP3-445N2	56242	800	6	8	2	0	1	0.25	0
RP1-57H24	170695	840	6	8	0	1	1	0	0.12
RP11-95H16	125401	416	3	8	2	0	1	0.25	0
RP11-72C6	7901	1322	10	8	1	4	1	0.12	0.5
RP11-33O2	67615	1368	10	8	2	0	1	0.25	0
RP1-162F2	69300	1563	11	8	4	0	1	0.5	0
RP1-4E16	69242	1562	11	8	3	0	1	0.38	0
RP1-17L4	69361	1564	11	8	3	0	1	0.38	0
RP11-20H17	44017	2151	18	8	0	2	1	0	0.25
RP11-40D15	56871	2161	18	8	0	4	1	0	0.5
RP11-19I2	11734	2182	19	8	0	2	1	0	0.25
RP11-43B2	52665	2208	19	8	2	0	1	0.25	0
RP11-87L13	60725	2213	19	8	1	0	1	0.12	0
RP11-141C22	170244	436	3	7	3	0	0.88	0.43	0
RP11-8P19	34528	2346	21	8	0	0	1	0	0
RP11-62G2	34543	2362	22	7	0	0	0.88	0	0
RMC20P037	36697	2261	20	7	1	0	0.88	0.14	0
RMC20P055	17252	2248	20	8	1	2	1	0.12	0.25
RMC20P063	49884	2292	20	8	2	0	1	0.25	0
RMC20P071	54999	2307	20	8	1	0	1	0.12	0
RMC20P073	56826	2310	20	8	0	0	1	0	0
RMC20P090	30999	2256	20	7	2	0	0.88	0.29	0
RMC20P099	23609	2253	20	7	2	2	0.88	0.29	0.29
RMC20P107	3781	2226	20	8	2	0	1	0.25	0
RP11-20B3	3055	638	5	8	1	1	1	0.12	0.12
RMC20P154	38669	2264	20	8	0	0	1	0	0
RMC20P179	62704	2313	20	8	1	2	1	0.12	0.25
RP11-16J22	148461	283	2	7	0	1	0.88	0	0.14
RP11-364H22	151847	286	2	8	0	1	1	0	0.12
RP11-598C21	184023	313	2	8	0	1	1	0	0.12
RP11-176L20	172629	302	2	7	0	1	0.88	0	0.14
RP11-292A10	160175	294	2	6	1	1	0.75	0.17	0.17
RP11-67P13	32068	658	5	8	1	0	1	0.12	0
RP11-73N22	117064	700	5	8	0	5	1	0	0.62
RP11-275E14	82851	685	5	8	0	4	1	0	0.5
RP11-1J24	7900	757	6	8	1	0	1	0.12	0
RP11-39C2	46975	792	6	8	2	0	1	0.25	0
RP11-47E20	105560	816	6	8	0	1	1	0	0.12
RP11-110D15	125503	1167	8	8	5	0	1	0.62	0
RP11-163F8	17487	1213	9	5	1	0	0.62	0.2	0
RP11-115D10	79894	1139	8	5	3	0	0.62	0.6	0
RP11-257P3	82467	1145	8	6	4	0	0.75	0.67	0
RP11-10G10	101112	1157	8	5	2	0	0.62	0.4	0
RP11-238H10	98877	1149	8	6	3	0	0.75	0.5	0
RP11-99I9	120373	1164	8	4	2	0	0.5	0.5	0
RP11-44N11	123706	1165	8	8	5	0	1	0.62	0
RP11-81I21	147908	1025	7	7	0	0	0.88	0	0
RP11-123F4	48000	909	7	8	0	0	1	0	0
RP11-43L19	150928	1027	7	8	1	1	1	0.12	0.12
RP11-65D17	127186	1172	8	8	5	0	1	0.62	0
RP11-86L18	153599	1030	7	8	1	1	1	0.12	0.12
RP11-58F7	156990	1032	7	8	1	2	1	0.12	0.25
RP11-120J1	14333	1210	9	8	0	6	1	0	0.75
RP11-109M15	16141	1212	9	8	2	1	1	0.25	0.12
RP11-106C6	147633	1024	7	8	1	0	1	0.12	0
RPC-41C23	30082	2055	17	7	1	0	0.88	0.14	0
RPC-1173I21	14461	2048	17	8	0	4	1	0	0.5
RPC-34H11	16303	2050	17	8	0	0	1	0	0
CTD-2060J19	307	2217	20	8	0	1	1	0	0.12
CTD-2004C12	131375	707	5	8	0	1	1	0	0.12
RP11-295J19	11313	160	2	8	0	0	1	0	0
RP11-550O23	129947	270	2	8	0	2	1	0	0.25
RP11-416H1	122459	265	2	8	0	1	1	0	0.12
RP11-442L5	137676	275	2	8	2	1	1	0.25	0.12
RP11-368K23	115271	254	2	8	0	1	1	0	0.12
RP11-60M20	121920	262	2	7	0	1	0.88	0	0.14
RP11-399B17	112961	250	2	7	0	2	0.88	0	0.29
RP11-629A22	98500	244	2	8	1	0	1	0.12	0
RP11-4K20	11074	158	2	8	2	0	1	0.25	0
RP11-456I15	73039	1571	11	5	1	0	0.62	0.2	0
RP11-672A2	75993	1577	11	8	4	0	1	0.5	0
RP11-342A16	83276	1586	11	8	3	0	1	0.38	0
RP11-297I3	2391	146	2	8	2	0	1	0.25	0

Table W1. (continued)

Clone	kb	Position	Chrom	NumPresent.All	NumGain.All	NumLost.All	PropPresent.All	PropGain.All	PropLost.All
RP11-1B18	8710	153	2	5	1	0	0.62	0.2	0
RP11-467A23	135330	274	2	8	0	2	1	0	0.25
RP11-541A15	31330	188	2	7	0	0	0.88	0	0
RP11-414D15	23655	175	2	8	2	0	1	0.25	0
RP11-82P15	51260	210	2	8	0	1	1	0	0.12
RP11-17D23	61500	217	2	7	1	0	0.88	0.14	0
RP11-496P1	14257	164	2	8	0	0	1	0	0
RP11-17M8	137675	1188	8	7	5	1	0.88	0.71	0.14
RP11-94M13	132829	1178	8	8	5	0	1	0.62	0
RP11-527H7	66178	1552	11	8	2	0	1	0.25	0
RP11-568F15	59215	1540	11	7	1	0	0.88	0.14	0
RP11-45B19	135479	1185	8	7	5	0	0.88	0.71	0
RP11-224H3	144967	279	2	8	0	1	1	0	0.12
RP11-642A1	141505	1190	8	7	4	0	0.88	0.57	0
RP11-675B4	65634	1551	11	5	1	0	0.62	0.2	0
RP11-149G19	67802	1557	11	8	2	1	1	0.25	0.12
RP11-495D4	126487	1170	8	8	5	0	1	0.62	0
RP11-548G17	64470	1548	11	8	4	0	1	0.5	0
RP11-660B16	62970	1545	11	7	1	0	0.88	0.14	0
RP11-121P22	81666	527	4	8	0	1	1	0	0.12
RP11-69J7	231332	342	2	8	0	0	1	0	0
RP11-311C14	230891	341	2	3	0	1	0.38	0	0.33
RP11-504L12	217013	333	2	3	0	1	0.38	0	0.33
RP11-498O20	122959	267	2	7	1	2	0.88	0.14	0.29
RP11-92G23	222716	337	2	6	3	0	0.75	0.5	0
CTB-1O12	60467	395	3	6	2	0	0.75	0.33	0
RP1-141L3	149531	721	5	4	0	0	0.5	0	0
RP11-3E2	103711	1720	12	6	1	0	0.75	0.17	0
RP11-18B8	63731	1688	12	7	0	0	0.88	0	0
RP11-284P8	125569	1733	12	6	0	0	0.75	0	0
RP11-294I11	126204	269	2	8	0	1	1	0	0.12
RP11-443B20	24995	177	2	5	0	0	0.62	0	0
RP11-32C8	38463	199	2	6	0	1	0.75	0	0.17
RP11-62F14	31036	187	2	4	0	0	0.5	0	0
RP11-560C7	23120	173	2	8	0	0	1	0	0
RP11-299C5	42455	202	2	2	0	1	0.25	0	0.5
CTD-2198F24	93550	1270	9	7	0	1	0.88	0	0.14
RP11-759M17	110979	1611	11	4	1	0	0.5	0.25	0
CTD-2059P15C	112818	1614	11	6	2	0	0.75	0.33	0
CTB-136O14	67488	1692	12	7	0	1	0.88	0	0.14
CTD-2022D21	102795	1719	12	8	2	0	1	0.25	0
CTD-2119E15	94305	1869	14	5	0	1	0.62	0	0.2
CTD-2022G15	72774	1931	15	8	1	1	1	0.12	0.12
CTD-2024G1	76549	1933	15	8	0	3	1	0	0.38
CTB-166E20	45434	2198	19	8	1	0	1	0.12	0
CTC-330D24	56209	2212	19	8	0	0	1	0	0
CTD-2200K24	44137	2277	20	7	0	0	0.88	0	0
LLNL-255K9	56590	2309	20	7	2	0	0.88	0.29	0
CTD-2031K20	49812	2291	20	8	1	0	1	0.12	0
CTD-2146L16	31310	2338	21	8	0	0	1	0	0
CTD-2194F18	38160	2366	22	6	1	1	0.75	0.17	0.17
RP11-804H8	50518	383	3	8	2	0	1	0.25	0
RP11-78F16	30741	1660	12	8	1	1	1	0.12	0.12
RP11-15L3	68218	1694	12	8	0	0	1	0	0
RP11-110L13	105290	1723	12	8	1	0	1	0.12	0
RP11-18J7	100203	1715	12	7	1	0	0.88	0.14	0
RP11-64N21	27316	1658	12	8	1	1	1	0.12	0.12
RP11-59H1	12770	1647	12	5	1	1	0.62	0.2	0.2
CTB-134O19	67610	676	5	8	0	1	1	0	0.12
CTD-2113L13	137697	713	5	7	0	1	0.88	0	0.14
CTD-2262N19	176537	748	5	6	0	0	0.75	0	0
CTD-2122A15	37189	783	6	3	0	0	0.38	0	0
CTD-2026K7	100037	813	6	5	0	0	0.62	0	0
CTD-2130B14	31650	777	6	7	1	0	0.88	0.14	0
RP11-71C11	185063	107	1	8	2	1	1	0.25	0.12
RP11-138E20	36331	885	7	7	0	0	0.88	0	0
RP11-13N10	208849	329	2	8	0	1	1	0	0.12
RP11-300D24	212385	330	2	8	3	1	1	0.38	0.12
RP11-560C24	213655	332	2	8	0	0	1	0	0
RP11-118M12	241894	349	2	6	0	1	0.75	0	0.17
RP11-337M10	3931	147	2	8	1	1	1	0.12	0.12
RP11-110G2	46226	205	2	8	1	1	1	0.12	0.12
RP11-130P22	46418	207	2	7	0	1	0.88	0	0.14

Table W1. (continued)

Clone	kb	Position	Chrom	NumPresent.All	NumGain.All	NumLost.All	PropPresent.All	PropGain.All	PropLost.All
RP11-436K12	47599	208	2	2	0	1	0.25	0	0.5
RP11-494H5	55917	211	2	8	0	0	1	0	0
CTB-136O8	45082	2352	21	7	1	0	0.88	0.14	0
RP11-482H16	56465	212	2	8	2	0	1	0.25	0
RP11-728F15	57493	214	2	8	0	1	1	0	0.12
RP11-90D1	59262	215	2	7	0	1	0.88	0	0.14
RP11-111P18	19796	170	2	5	1	1	0.62	0.2	0.2
RP11-116D2	21159	172	2	7	0	0	0.88	0	0
RP11-513P11	20594	171	2	6	0	2	0.75	0	0.33
RP11-541A15	31330	188	2	8	0	0	1	0	0
RP11-444D15	32224	191	2	7	0	0	0.88	0	0
RP11-93O2	32483	192	2	7	0	0	0.88	0	0
RP11-356H17	71744	233	2	8	1	0	1	0.12	0
RP11-263L17	65704	223	2	8	1	0	1	0.12	0
RP11-401N16	69951	230	2	8	0	0	1	0	0
RP11-340F16	65881	224	2	7	0	0	0.88	0	0
RP11-688J22	85993	239	2	8	0	0	1	0	0
RP11-4C8	190503	317	2	8	1	0	1	0.12	0
RP11-554H10	88495	241	2	8	0	0	1	0	0
RP11-426K3	101146	246	2	8	0	0	1	0	0
RP4-690P14	49335	380	3	8	2	0	1	0.25	0
RP11-123F4	48000	909	7	5	0	0	0.62	0	0
RP11-353K11	96897	243	2	7	1	0	0.88	0.14	0
RP11-127K18	98651	245	2	3	0	0	0.38	0	0
RP11-299H21	101327	247	2	8	0	0	1	0	0
RP11-483E17	175544	304	2	8	0	1	1	0	0.12
RP11-176L20	172629	302	2	4	0	0	0.5	0	0
RP11-567N19	170584	300	2	7	0	1	0.88	0	0.14
RP11-279N12	177899	308	2	8	0	2	1	0	0.25
RP11-12N7	176227	306	2	8	1	1	1	0.12	0.12
RP11-442L5	137676	275	2	8	0	1	1	0	0.12
RP11-434I13	113472	252	2	8	0	1	1	0	0.12
RP11-547F18	67099	225	2	6	0	0	0.75	0	0
RP11-17G11	153584	290	2	8	3	1	1	0.38	0.12
RP11-11C17	154022	291	2	8	0	1	1	0	0.12
RP11-750D14	169889	298	2	8	0	1	1	0	0.12
RP11-141H20	170190	299	2	5	0	1	0.62	0	0.2
RP11-224H3	144967	279	2	8	1	2	1	0.12	0.25
RP11-111J6	18611	168	2	7	0	0	0.88	0	0
RP11-47E6	204775	327	2	6	0	0	0.75	0	0
RP11-31C6	71528	1769	13	6	1	2	0.75	0.17	0.33
RP11-126J14	13498	759	6	8	1	0	1	0.12	0
RP11-176L22	233638	344	2	8	0	2	1	0	0.25
RP11-93G2	76799	1777	13	2	1	0	0.25	0.5	0
RP11-73D20	102469	815	6	7	1	2	0.88	0.14	0.29
RP11-77O20	5586	1318	10	5	2	0	0.62	0.4	0
RP11-19J14	96752	1785	13	2	0	0	0.25	0	0
RP11-230A13	21593	1335	10	7	1	0	0.88	0.14	0
RP11-14A8	22138	1338	10	8	1	1	1	0.12	0.12
RP11-8C15	19885	1739	13	5	0	1	0.62	0	0.2
RP11-3P8	110658	1798	13	8	3	2	1	0.38	0.25
RP11-28E3	73086	1380	10	5	3	1	0.62	0.6	0.2
RP11-92I18	49923	1356	10	7	2	0	0.88	0.29	0
RP11-265F14	15121	12	1	8	0	0	1	0	0
RP11-25D22	7695	1459	11	7	2	0	0.88	0.29	0
RP11-86K9	69724	1371	10	8	3	0	1	0.38	0
RP11-165A8	167931	97	1	8	2	1	1	0.25	0.12
RP11-35F11	62953	1544	11	8	1	0	1	0.12	0
RP11-112F5	76964	1384	10	5	1	0	0.62	0.2	0
RP11-71J7	31391	190	2	4	0	0	0.5	0	0
RP11-97H19	6826	461	4	7	2	0	0.88	0.29	0
RP11-15J15	125424	1631	11	8	1	0	1	0.12	0
RP11-79M5	96648	1398	10	8	1	2	1	0.12	0.25
RP11-241P3	42270	375	3	5	1	0	0.62	0.2	0
RP11-60P2	85146	1942	15	5	0	1	0.62	0	0.2
RP11-41D21	107841	1413	10	5	0	2	0.62	0	0.4
RP11-205A6	127270	417	3	8	4	0	1	0.5	0
RP11-3K7	61062	2166	18	7	0	3	0.88	0	0.43
RP11-95H5	106895	249	2	8	0	2	1	0	0.25
RP11-53F19	38805	1748	13	2	0	1	0.25	0	0.5
RP11-46O23	7387	645	5	5	2	0	0.62	0.4	0
RP11-39A8	168191	296	2	7	0	2	0.88	0	0.29
RP11-52B21	45018	1757	13	4	0	3	0.5	0	0.75

Table W1. (continued)

Clone	kb	Position	Chrom	NumPresent.All	NumGain.All	NumLost.All	PropPresent.All	PropGain.All	PropLost.All
RP11-277N18	106611	691	5	4	0	3	0.5	0	0.75
RP11-236B14	55230	2211	19	5	0	0	0.62	0	0
RP11-194F13	238741	141	1	7	1	1	0.88	0.14	0.14
RP11-35I11	8923	1326	10	8	4	0	1	0.5	0
RP11-35O10	166977	738	5	8	0	0	1	0	0
RP11-119J12	45906	204	2	6	0	1	0.75	0	0.17
RP11-15H10	29581	1349	10	7	1	0	0.88	0.14	0
RP11-115G22	30109	1886	15	8	0	3	1	0	0.38
RP11-61N23	175659	305	2	7	1	1	0.88	0.14	0.14
RP11-282N18	74004	1381	10	5	2	1	0.62	0.4	0.2
RP11-66L23	49230	1899	15	7	0	1	0.88	0	0.14
RP11-41F5	23710	367	3	8	0	0	1	0	0
RP11-53P21	4285	753	6	5	1	0	0.62	0.2	0
RP11-32I9	115887	1423	10	8	3	1	1	0.38	0.12
RP11-18B17	58506	1912	15	8	0	1	1	0	0.12
RP11-129P2	108925	406	3	8	1	1	1	0.12	0.12
RP11-213H12	56390	1907	15	3	0	0	0.38	0	0
RP11-30M4	63585	1918	15	6	0	0	0.75	0	0
RP11-119J20	173700	607	4	7	0	4	0.88	0	0.57
RP11-84C17	7778	2180	19	8	0	0	1	0	0
RP11-33B6	70593	1929	15	8	0	2	1	0	0.25
RP11-260E18	16623	654	5	8	1	0	1	0.12	0
RP11-66C14	38715	2349	21	6	0	0	0.75	0	0
RP11-203J7	102729	689	5	8	0	6	1	0	0.75
RP11-116L7	83600	1941	15	7	0	1	0.88	0	0.14
RP11-1H14	77844	681	5	8	0	2	1	0	0.25
RP11-103L11	3816	640	5	8	1	0	1	0.12	0
RP11-205O15	7256	1458	11	6	0	0	0.75	0	0
RP11-45L19	128229	706	5	8	0	5	1	0	0.62
RP11-143O12	55756	665	5	7	0	1	0.88	0	0.14
RP11-139H5	21963	16	1	8	0	2	1	0	0.25
RP11-145M23	24851	774	6	1	0	0	0.12	0	0
RP11-42M12	127225	705	5	8	0	3	1	0	0.38
RP11-156M23	96290	64	1	8	0	3	1	0	0.38
RP11-32O2	85580	808	6	8	0	2	1	0	0.25
RP11-31B18	155638	728	5	5	0	1	0.62	0	0.2
RP11-254E10	11164	1053	8	7	0	6	0.88	0	0.86
RP11-5N6	112964	1615	11	6	2	0	0.75	0.33	0
RP11-7H16	53413	796	6	8	2	0	1	0.25	0
RP11-147D7	37482	2193	19	5	0	1	0.62	0	0.2
RP11-133I16	120201	1626	11	7	2	0	0.88	0.29	0
RP11-188F7	12042	9	1	7	0	1	0.88	0	0.14
RP11-2J15	51666	2207	19	6	0	0	0.75	0	0
RP11-17M17	132085	1636	11	7	0	1	0.88	0	0.14
RP11-4O6	27542	21	1	8	0	0	1	0	0
RP11-11O15	15615	2246	20	5	0	3	0.62	0	0.6
RP11-235O5	10594	1051	8	6	0	5	0.75	0	0.83
RP11-11L6	28646	369	3	7	0	0	0.88	0	0
RP11-193P21	210105	125	1	8	1	0	1	0.12	0
RP11-71N16	38411	2263	20	7	0	0	0.88	0	0
RP11-51C1	19264	1064	8	7	0	6	0.88	0	0.86
RP11-32A11	96430	1272	9	8	0	0	1	0	0
RP11-105E2	87242	1258	9	6	0	0	0.75	0	0
RP11-288N10	23445	1074	8	8	0	6	1	0	0.75
GS1-206P22	147450	1023	7	8	0	0	1	0	0
RP11-18A21	30769	1221	9	6	0	1	0.75	0	0.17
RP11-225J6	75709	1135	8	2	1	0	0.25	0.5	0
GS1-100A6	37897	890	7	5	0	0	0.62	0	0
RP11-106J7	3377	2125	18	7	0	0	0.88	0	0
RP11-147H22	96445	1273	9	6	0	0	0.75	0	0
RP11-214E11	80998	1141	8	8	6	0	1	0.75	0
RP11-51G15	120265	1424	10	7	0	1	0.88	0	0.14
RP11-91B20	4859	459	4	8	0	1	1	0	0.12
RP11-10G10	101112	1157	8	7	5	0	0.88	0.71	0
RP11-42K2	128795	1440	10	7	0	2	0.88	0	0.29
RP11-126C7	38162	486	4	2	0	0	0.25	0	0
RP11-56J22	20188	1485	11	6	0	1	0.75	0	0.17
RP11-54L9	191165	451	3	8	1	1	1	0.12	0.12
RP11-160B24	51859	2157	18	6	0	2	0.75	0	0.33
RP11-150D18	41866	1520	11	7	0	1	0.88	0	0.14
RP11-119C22	33787	779	6	7	1	0	0.88	0.14	0
RP11-7H17	75214	2174	18	6	0	3	0.75	0	0.5
RP11-72H12	28877	185	2	7	0	0	0.88	0	0



Table W1. (continued)

Clone	kb	Position	Chrom	NumPresent.All	NumGain.All	NumLost.All	PropPresent.All	PropGain.All	PropLost.All
RP11-225L15	207593	328	2	8	0	2	1	0	0.25
RP11-30C8	71779	1770	13	5	0	3	0.62	0	0.6
RP11-159C8	20443	767	6	8	1	0	1	0.12	0
RP11-188B21	233910	345	2	6	0	2	0.75	0	0.33
RP11-78P9	108555	818	6	8	0	2	1	0	0.25
RP11-33J8	7200	1321	10	8	1	3	1	0.12	0.38
RP11-122A8	97371	1786	13	2	0	0	0.25	0	0
RP11-18B14	21850	1336	10	7	1	0	0.88	0.14	0
RP11-200C22	22622	1340	10	8	1	0	1	0.12	0
RP11-87E7	21702	1740	13	4	0	1	0.5	0	0.25
RP11-19O15	111287	1799	13	7	0	2	0.88	0	0.29
RP11-62E15	76964	1385	10	7	2	0	0.88	0.29	0
RP11-240K9	52297	1359	10	8	2	2	1	0.25	0.25
RP11-62B23	30378	24	1	8	0	1	1	0	0.12
RP11-72L17	14374	1472	11	8	0	0	1	0	0
RP11-41F17	71740	1375	10	8	2	1	1	0.25	0.12
RP11-118P13	182394	105	1	7	2	0	0.88	0.29	0
RP11-120P20	70129	1567	11	6	2	1	0.75	0.33	0.17
RP11-45P20	78276	1386	10	8	3	0	1	0.38	0
RP11-81L7	57129	213	2	5	0	0	0.62	0	0
RP11-276O17	23986	471	4	4	2	0	0.5	0.5	0
RP11-7F12	131207	1635	11	7	0	1	0.88	0	0.14
RP11-123G19	98832	1400	10	8	1	2	1	0.12	0.25
RP11-189K9	54679	388	3	8	1	0	1	0.12	0
RP11-120N1	95763	1948	15	3	0	0	0.38	0	0
RP11-49H17	108767	1415	10	4	0	2	0.5	0	0.5
RP11-160A13	144088	425	3	8	3	0	1	0.38	0
RP11-53N15	70193	2171	18	7	0	3	0.88	0	0.43
RP11-218F21	113094	251	2	8	0	2	1	0	0.25
RP11-9F13	39564	1750	13	2	0	1	0.25	0	0.5
RP11-5N8	14927	650	5	5	1	0	0.62	0.2	0
RP11-218D15	171577	301	2	8	0	1	1	0	0.12
RP11-120G8	46357	1758	13	5	0	3	0.62	0	0.6
RP11-15P5	120387	701	5	2	0	1	0.25	0	0.5
RP11-12C9	62474	2214	19	8	0	0	1	0	0
RP11-200F14	6680	150	2	8	1	0	1	0.12	0
RP11-42I17	8183	1325	10	6	2	1	0.75	0.33	0.17
RP11-14K9	168407	739	5	6	1	0	0.75	0.17	0
RP11-24P23	70526	231	2	8	0	0	1	0	0
RP11-45L17	33134	1351	10	1	0	0	0.12	0	0
RP11-194H7	32327	1889	15	8	0	1	1	0	0.12
RP11-34N13	199173	324	2	8	1	1	1	0.12	0.12
RP11-17O5	78596	1388	10	5	3	0	0.62	0.6	0
RP11-49K3	48250	1898	15	7	0	1	0.88	0	0.14
RP11-286G5	36353	372	3	8	1	0	1	0.12	0
RP11-168G4	6939	755	6	6	1	0	0.75	0.17	0
RP11-48B22	121249	1426	10	8	0	1	1	0	0.12
RP11-74K1	58459	1911	15	6	0	1	0.75	0	0.17
RP11-214A5	116445	411	3	8	1	0	1	0.12	0
RP11-102E12	4458	2128	18	7	1	1	0.88	0.14	0.14
RP11-54P3	64253	1920	15	8	0	1	1	0	0.12
RP11-13O14	185751	624	4	8	0	2	1	0	0.25
RP11-110J19	34465	2191	19	8	1	0	1	0.12	0
RP11-10K12	76260	1932	15	8	0	1	1	0	0.12
RP11-85N3	35843	660	5	8	1	0	1	0.12	0
RP11-22M5	20602	2356	22	8	0	0	1	0	0
RP11-252I13	107005	692	5	6	0	4	0.75	0	0.67
RP11-131K19	85888	1943	15	8	0	1	1	0	0.12
RP11-47N20	81388	683	5	8	0	1	1	0	0.12
RP11-36H5	6365	644	5	7	1	1	0.88	0.14	0.14
RP11-133H19	8563	1460	11	8	0	0	1	0	0
RP11-4E3	133193	708	5	8	0	1	1	0	0.12
RP11-190C5	57585	668	5	7	0	1	0.88	0	0.14
RP11-166E15	17179	1476	11	8	0	0	1	0	0
RP11-88O2	41926	35	1	8	0	0	1	0	0
RP11-2P4	27928	776	6	5	1	0	0.62	0.2	0
RP11-21J3	134471	711	5	8	0	1	1	0	0.12
RP11-178M11	101435	68	1	8	0	1	1	0	0.12
RP11-113K7	91938	811	6	8	0	3	1	0	0.38
RP11-47O12	156664	729	5	5	1	0	0.62	0.2	0
RP11-277K10	9674	1047	8	4	0	3	0.5	0	0.75
RP11-279M1	113807	1617	11	8	2	0	1	0.25	0
RP11-146B10	55302	798	6	6	0	1	0.75	0	0.17

Table W1. (continued)

Clone	kb	Position	Chrom	NumPresent.All	NumGain.All	NumLost.All	PropPresent.All	PropGain.All	PropLost.All
RP11-92J4	41164	2194	19	6	1	0	0.75	0.17	0
RP11-126D18	120456	1627	11	7	1	0	0.88	0.14	0
RP11-178M15	13349	10	1	8	0	1	1	0	0.12
RP11-24E15	474	2218	20	8	0	2	1	0	0.25
RP11-27H17	133589	1637	11	6	0	0	0.75	0	0
RP11-104J13	30834	25	1	8	0	1	1	0	0.12
RP11-16N16	16942	2247	20	8	0	3	1	0	0.38
RP11-252K12	10893	1052	8	8	0	7	1	0	0.88
RP11-209O16	38238	374	3	8	0	0	1	0	0
RP11-74E6	211594	126	1	8	1	1	1	0.12	0.12
RP11-9M24	39568	2265	20	7	0	0	0.88	0	0
RP11-274K12	15976	1061	8	7	0	5	0.88	0	0.71
RP11-31N23	87906	1259	9	7	0	1	0.88	0	0.14
RP11-106O17	93144	1267	9	3	0	1	0.38	0	0.33
RP11-204M16	23223	1072	8	5	0	3	0.62	0	0.6
RP11-17O4	127638	1302	9	8	0	1	1	0	0.12
RP11-65J24	76694	1136	8	7	4	0	0.88	0.57	0
GS1-191O15	2730	846	7	8	0	1	1	0	0.12
RP11-113J12	3431	2126	18	8	0	1	1	0	0.12
RP11-136M18	75400	1244	9	6	0	0	0.75	0	0
RP11-80C11	82164	1143	8	7	5	0	0.88	0.71	0
RP11-257O17	121974	1427	10	8	0	3	1	0	0.38
RP11-101J14	8171	462	4	8	0	2	1	0	0.25
RP11-208E21	100605	1156	8	8	4	0	1	0.5	0
RP11-31A20	129012	1441	10	8	0	3	1	0	0.38
RP11-264N7	41277	489	4	8	0	0	1	0	0
RP11-2C23	19960	1484	11	5	0	0	0.62	0	0
RP11-233N20	198343	452	3	8	1	1	1	0.12	0.12
RP11-12J12	55422	2160	18	8	0	4	1	0	0.5
RP11-79G4	41566	1519	11	8	0	2	1	0	0.25
RP11-139J19	36312	781	6	8	1	0	1	0.12	0
RP11-54G9	3006	2179	19	4	0	0	0.5	0	0
RP11-128C5	44049	203	2	7	0	2	0.88	0	0.29
RP11-4B6	218461	334	2	7	0	2	0.88	0	0.29
RP11-9P22	72520	1773	13	5	0	2	0.62	0	0.4
RP11-224B15	23690	772	6	7	0	0	0.88	0	0
RP11-21K1	235978	347	2	7	0	3	0.88	0	0.43
RP11-51C8	85579	1779	13	3	0	0	0.38	0	0
RP11-28K19	119429	825	6	7	0	2	0.88	0	0.29
RP11-197K17	8120	1324	10	8	1	3	1	0.12	0.38
RP11-23M9	97662	1787	13	8	1	1	1	0.12	0.12
RP11-66P13	26493	1347	10	3	0	2	0.38	0	0.67
RP11-75N18	24840	1345	10	8	1	0	1	0.12	0
RP11-18F22	23399	1742	13	6	0	1	0.75	0	0.17
RP11-30I17	143379	82	1	7	4	0	0.88	0.57	0
RP11-129G17	89676	1396	10	3	0	2	0.38	0	0.67
RP11-27P22	51484	1357	10	6	2	0	0.75	0.33	0
RP11-253M24	45171	36	1	8	0	0	1	0	0
RP11-80B10	19235	1479	11	7	0	0	0.88	0	0
RP11-104F15	71425	1374	10	7	2	1	0.88	0.29	0.14
RP11-65I22	199789	113	1	7	2	0	0.88	0.29	0
RP11-98G24	77013	1580	11	7	1	0	0.88	0.14	0
RP11-19C18	78296	1387	10	8	2	0	1	0.25	0
RP11-113N17	82587	237	2	3	0	3	0.38	0	1
RP11-24G16	38053	485	4	5	1	0	0.62	0.2	0
RP11-256M2	25602	1885	15	6	0	0	0.75	0	0
RP11-80H11	101068	1403	10	8	0	2	1	0	0.25
RP11-229A12	57353	392	3	8	0	0	1	0	0
RP11-55N14	2655	2124	18	5	0	1	0.62	0	0.2
RP11-246B13	108591	1414	10	3	0	0	0.38	0	0
RP11-64F6	152252	430	3	8	3	1	1	0.38	0.12
RP11-49M3	2419	2178	19	8	0	2	1	0	0.25
RP11-1L22	133492	271	2	7	0	3	0.88	0	0.43
RP11-88N4	39608	1751	13	6	0	3	0.75	0	0.5
RP11-5N11	31667	657	5	8	1	0	1	0.12	0
RP11-12N7	176227	306	2	8	0	1	1	0	0.12
RP11-16F6	51033	1763	13	5	0	3	0.62	0	0.6
RP11-21C10	133928	710	5	6	0	1	0.75	0	0.17
RP11-31B6	14999	2316	21	7	0	0	0.88	0	0
RP11-185P14	9619	156	2	7	0	0	0.88	0	0
RP11-40D12	13694	1328	10	7	1	2	0.88	0.14	0.29
RP11-182E4	170151	741	5	7	1	0	0.88	0.14	0
RP11-63D13	79682	236	2	6	0	0	0.75	0	0

Table W1. (continued)

Clone	kb	Position	Chrom	NumPresent.All	NumGain.All	NumLost.All	PropPresent.All	PropGain.All	PropLost.All
RP11-48O11	43423	1353	10	7	1	0	0.88	0.14	0
RP11-70A17	32651	1890	15	8	0	1	1	0	0.12
RP11-53G6	220995	335	2	8	1	1	1	0.12	0.12
RP11-9M11	88215	1393	10	3	0	1	0.38	0	0.33
RP11-221H24	50811	1901	15	7	0	1	0.88	0	0.14
RP11-119L2	42435	376	3	8	0	0	1	0	0
RP11-66E14	8799	758	6	6	1	1	0.75	0.17	0.17
RP11-262E19	123678	1431	10	8	2	1	1	0.25	0.12
RP11-203F9	58191	1910	15	6	0	1	0.75	0	0.17
RP11-169N13	120765	415	3	8	1	1	1	0.12	0.12
RP11-10G8	17272	2140	18	8	0	1	1	0	0.12
RP11-85E15	65209	1922	15	8	0	1	1	0	0.12
RP11-94J21	1478	637	5	8	1	2	1	0.12	0.25
RP11-133A7	45983	2199	19	7	0	0	0.88	0	0
RP11-7P8	76930	1934	15	8	0	1	1	0	0.12
RP11-160F8	53345	663	5	8	0	1	1	0	0.12
RP11-65F22	30954	2361	22	6	0	1	0.75	0	0.17
RP11-13O21	111718	694	5	8	0	5	1	0	0.62
RP11-185D5	92167	1946	15	8	0	1	1	0	0.12
RP11-115L24	103124	690	5	8	0	6	1	0	0.75
RP11-145B1	10279	646	5	8	1	2	1	0.12	0.25
RP11-170F20	10534	1463	11	7	0	1	0.88	0	0.14
RP11-115I4	139880	715	5	8	0	2	1	0	0.25
RP11-174I22	62919	671	5	7	0	0	0.88	0	0
RP11-13O19	19261	1480	11	8	0	0	1	0	0
RP11-55M23	54837	40	1	8	0	0	1	0	0
RP11-197P9	35199	780	6	7	1	0	0.88	0.14	0
RP11-233E5	137655	712	5	8	0	1	1	0	0.12
RP11-284N8	110394	72	1	8	0	2	1	0	0.25
RP11-59F18	112942	822	6	8	0	1	1	0	0.12
RP11-4J6	158183	731	5	7	0	1	0.88	0	0.14
RP11-113B7	4219	1041	8	7	0	6	0.88	0	0.86
RP11-36M5	113531	1616	11	8	4	0	1	0.5	0
RP11-164C22	62318	801	6	7	1	0	0.88	0.14	0
RP11-140E1	43373	2196	19	8	1	0	1	0.12	0
RP11-145I11	121703	1628	11	7	3	0	0.88	0.43	0
RP11-219F4	14391	11	1	7	0	1	0.88	0	0.14
RP11-153M12	941	2219	20	8	0	2	1	0	0.25
RP11-82K8	2080	1038	8	6	0	5	0.75	0	0.83
RP11-4P6	32880	27	1	8	0	0	1	0	0
RP11-11M17	17708	2249	20	8	0	3	1	0	0.38
RP11-122N11	7296	1045	8	8	0	7	1	0	0.88
RP11-189H19	44574	377	3	8	0	0	1	0	0
RP11-260A10	214205	130	1	7	2	1	0.88	0.29	0.14
RP11-17F3	41360	2270	20	8	0	0	1	0	0
RP11-191P9	19617	1065	8	8	0	6	1	0	0.75
RP11-31D18	77811	1246	9	7	1	0	0.88	0.14	0
RP11-115L5	33163	1226	9	3	0	0	0.38	0	0
RP11-89M8	22745	1071	8	7	0	5	0.88	0	0.71
GS1-17A10	77782	939	7	8	0	0	1	0	0
RP11-17J8	34511	1227	9	8	2	0	1	0.25	0
RP11-203C23	74977	1134	8	1	0	1	0.12	0	1
CTB-140E3	100337	967	7	8	2	0	1	0.25	0
RP11-105C15	5911	2129	18	8	2	1	1	0.25	0.12
RP11-142P12	81525	1250	9	8	0	0	1	0	0
RP11-107C1	82451	1144	8	7	4	0	0.88	0.57	0
RP11-255D5	123240	1430	10	5	0	1	0.62	0	0.2
RP11-69L7	753	455	4	8	0	2	1	0	0.25
RP11-142F22	100511	1155	8	7	4	0	0.88	0.57	0
RP11-48A2	129270	1442	10	8	0	1	1	0	0.12
RP11-138F23	40749	488	4	7	0	0	0.88	0	0
RP11-11A11	19912	1483	11	5	0	0	0.62	0	0
RP11-177C16	7368	756	6	8	2	0	1	0.25	0
RP11-15C15	57286	2162	18	8	0	4	1	0	0.5
RP11-18D13	42826	1521	11	7	1	1	0.88	0.14	0.14
RP11-136C6	39160	785	6	8	2	0	1	0.25	0
RP11-201F4	13702	2183	19	8	1	0	1	0.12	0
RP11-180L21	46240	206	2	8	0	1	1	0	0.12
RP11-23G2	222128	336	2	8	0	2	1	0	0.25
RP11-46L3	72410	1772	13	5	0	3	0.62	0	0.6
RP11-54H13	32633	778	6	8	2	0	1	0.25	0
RP11-116M19	236917	348	2	8	0	1	1	0	0.12
RP11-86C3	87949	1780	13	7	0	0	0.88	0	0

Table W1. (continued)

Clone	kb	Position	Chrom	NumPresent.All	NumGain.All	NumLost.All	PropPresent.All	PropGain.All	PropLost.All
RP11-177M14	133412	831	6	5	0	1	0.62	0	0.2
RP11-61P15	13711	1329	10	8	1	2	1	0.12	0.25
RP11-113F15	98060	1788	13	5	1	0	0.62	0.2	0
RP11-70B16	34315	1352	10	7	1	1	0.88	0.14	0.14
RP11-176P2	24560	1344	10	8	1	0	1	0.12	0
RP11-204D11	23146	1741	13	6	0	1	0.75	0	0.17
RP11-177M16	171602	99	1	6	1	0	0.75	0.17	0
RP11-19K9	99295	1401	10	6	0	1	0.75	0	0.17
RP11-179B15	59302	1362	10	7	1	0	0.88	0.14	0
RP11-69G14	61842	46	1	8	0	0	1	0	0
RP11-15A11	23939	1486	11	8	0	0	1	0	0
RP11-58O1	72320	1377	10	8	2	2	1	0.25	0.25
RP11-167J2	206665	121	1	8	2	0	1	0.25	0
RP11-40G3	83096	1585	11	6	0	0	0.75	0	0
RP11-78F9	80207	1389	10	8	3	1	1	0.38	0.12
RP11-1L22	133492	271	2	2	0	2	0.25	0	1
RP11-38M16	40214	487	4	7	2	0	0.88	0.29	0
RP11-39N23	49512	1900	15	8	0	1	1	0	0.12
RP11-260L2	101657	1405	10	8	1	2	1	0.12	0.25
RP11-108A8	63284	398	3	8	0	0	1	0	0
RP11-7E5	10750	2135	18	7	0	1	0.88	0	0.14
RP11-3G2	110790	1416	10	8	2	3	1	0.25	0.38
RP11-209H21	160565	432	3	8	3	0	1	0.38	0
RP11-56K21	14304	2184	19	8	2	0	1	0.25	0
RP11-119N3	137699	277	2	8	0	2	1	0	0.25
RP11-21H9	40802	1752	13	8	0	7	1	0	0.88
RP11-22L20	55905	666	5	8	0	1	1	0	0.12
RP11-250B10	179859	309	2	8	0	2	1	0	0.25
RP11-234M13	54306	1764	13	6	0	4	0.75	0	0.67
RP11-14K13	141675	717	5	8	0	1	1	0	0.12
RP11-6I7	26777	2327	21	7	0	0	0.88	0	0
RP11-81F24	15249	166	2	7	0	0	0.88	0	0
RP11-19L14	15557	1331	10	8	1	2	1	0.12	0.25
RP11-9I14	171180	742	5	8	1	0	1	0.12	0
RP11-8C18	106168	248	2	7	0	3	0.88	0	0.43
RP11-67O23	53025	1360	10	4	2	0	0.5	0.5	0
RP11-173E7	33953	1891	15	6	0	0	0.75	0	0
RP11-129K1	2132	353	3	6	0	0	0.75	0	0
RP11-8D20	97763	1399	10	5	0	1	0.62	0	0.2
RP11-47P5	52596	1903	15	5	0	0	0.62	0	0
RP11-122D19	53990	386	3	8	0	0	1	0	0
RP11-83B17	14557	760	6	8	1	0	1	0.12	0
RP11-8O10	127417	1436	10	6	0	1	0.75	0	0.17
RP11-107I6	62769	1917	15	7	0	4	0.88	0	0.57
RP11-59J16	128438	418	3	7	2	1	0.88	0.29	0.14
RP11-104N11	33435	2147	18	8	0	1	1	0	0.12
RP11-101C13	67649	1925	15	8	0	1	1	0	0.12
RP11-82M24	3449	639	5	7	1	2	0.88	0.14	0.29
RP11-17I20	53768	2209	19	7	1	0	0.88	0.14	0
RP11-81A1	77858	1935	15	7	0	0	0.88	0	0
RP11-47P7	56283	667	5	8	0	1	1	0	0.12
RP11-213L15	27826	2359	22	7	0	0	0.88	0	0
RP11-58G19	113712	698	5	8	0	5	1	0	0.62
RP11-57P19	92715	1947	15	3	0	0	0.38	0	0
RP11-64F17	112761	697	5	8	0	5	1	0	0.62
RP11-72C10	10746	647	5	6	0	1	0.75	0	0.17
RP11-82L24	11685	1466	11	6	0	1	0.75	0	0.17
RP11-109G16	147258	719	5	6	0	0	0.75	0	0
RP11-40N8	67255	675	5	8	0	1	1	0	0.12
RP11-199K11	19383	1481	11	8	0	0	1	0	0
RP11-110A23	60743	45	1	8	0	1	1	0	0.12
RP11-133J6	39187	786	6	7	1	0	0.88	0.14	0
RP11-55M16	141079	716	5	8	0	1	1	0	0.12
RP11-8D14	157812	87	1	8	1	0	1	0.12	0
RP11-12C21	125373	828	6	8	0	0	1	0	0
RP11-210K16	160720	733	5	5	0	0	0.62	0	0
RP11-121F7	3284	1040	8	6	0	5	0.75	0	0.83
RP11-35P15	117055	1619	11	8	2	0	1	0.25	0
RP11-2M9	71712	804	6	8	0	1	1	0	0.12
RP11-208I3	47672	2200	19	7	0	1	0.88	0	0.14
RP11-35M6	122910	1630	11	8	2	0	1	0.25	0
RP11-145C4	18460	13	1	4	0	0	0.5	0	0
RP11-26F18	3123	2223	20	8	0	2	1	0	0.25

Table W1. (continued)

Clone	kb	Position	Chrom	NumPresent.All	NumGain.All	NumLost.All	PropPresent.All	PropGain.All	PropLost.All
RP11-140K14	4358	1042	8	5	0	4	0.62	0	0.8
RP11-161A11	34018	29	1	8	0	1	1	0	0.12
RP11-110C10	18211	2250	20	7	0	3	0.88	0	0.43
RP11-287P18	7157	1044	8	8	0	7	1	0	0.88
RP11-39L1	55786	389	3	8	0	0	1	0	0
RP11-66M7	214200	129	1	8	3	1	1	0.38	0.12
RP11-4A12	42402	2272	20	8	0	0	1	0	0
RP11-233H21	19702	1066	8	7	0	6	0.88	0	0.86
RP11-30N20	97948	1276	9	8	0	1	1	0	0.12
RP11-115I23	13018	1208	9	5	0	4	0.62	0	0.8
RP11-158F9	24859	1075	8	8	0	6	1	0	0.75
RP11-16N10	67236	1236	9	8	0	1	1	0	0.12
RP11-117N14	74642	1132	8	8	4	0	1	0.5	0
CTB-88A9	36807	888	7	8	0	0	1	0	0
RP11-102O20	9932	2132	18	8	0	1	1	0	0.12
RP11-132G20	15858	1211	9	8	0	1	1	0	0.12
RP11-93E11	81763	1142	8	8	5	0	1	0.62	0
RP11-70E19	124606	1433	10	8	0	2	1	0	0.25
RP11-210D19	53294	502	4	8	0	1	1	0	0.12
RP11-136H10	100171	1154	8	7	3	0	0.88	0.43	0
RP11-27F2	133055	1444	10	8	0	4	1	0	0.5
RP11-113F10	42338	490	4	7	0	0	0.88	0	0
RP11-203L7	26547	1488	11	6	0	0	0.75	0	0
RP11-88E14	16499	763	6	8	1	0	1	0.12	0
RP11-105L16	64476	2167	18	7	0	3	0.88	0	0.43
RP11-102E22	44107	1523	11	8	0	1	1	0	0.12
RP11-105P7	40322	787	6	8	1	0	1	0.12	0
RP11-107O2	14886	2185	19	8	2	0	1	0.25	0
RP11-87C16	73390	234	2	8	0	0	1	0	0
RP11-247E23	223880	338	2	8	0	1	1	0	0.12
RP11-79I4	72184	1771	13	7	0	3	0.88	0	0.43
RP11-174E21	37591	784	6	7	2	0	0.88	0.29	0
RP11-69N2	340	1312	10	8	1	4	1	0.12	0.5
RP11-165N12	90719	1781	13	7	1	0	0.88	0.14	0
RP11-15H7	139915	835	6	8	0	1	1	0	0.12
RP11-22K18	14455	1330	10	8	1	2	1	0.12	0.25
RP11-7B23	99930	1789	13	8	1	1	1	0.12	0.12
RP11-71N21	51554	1358	10	8	2	1	1	0.25	0.12
RP11-218D6	28169	1348	10	8	1	2	1	0.12	0.25
RP11-7G2	25534	1743	13	8	0	1	1	0	0.12
RP11-216F1	209140	124	1	6	3	0	0.75	0.5	0
RP11-16H23	105401	1410	10	7	1	3	0.88	0.14	0.43
RP11-72F15	61975	1364	10	8	2	0	1	0.25	0
RP11-111N18	69092	51	1	8	0	0	1	0	0
RP11-236N9	29450	1492	11	8	0	0	1	0	0
RP11-50K4	72570	1378	10	8	2	1	1	0.25	0.12
RP11-131M16	213196	128	1	7	1	2	0.88	0.14	0.29
RP11-89H11	86775	1590	11	8	3	0	1	0.38	0
RP11-31L4	80374	1390	10	8	3	0	1	0.38	0
RP11-67J2	145625	281	2	8	0	1	1	0	0.12
RP11-42A17	45819	493	4	5	1	0	0.62	0.2	0
RP11-25G4	53725	1904	15	6	0	1	0.75	0	0.17
RP11-37L21	102391	1407	10	8	2	2	1	0.25	0.25
RP11-154H23	71461	402	3	8	1	0	1	0.12	0
RP11-90B5	32374	2146	18	7	0	1	0.88	0	0.14
RP11-182C2	111415	1417	10	8	2	4	1	0.25	0.5
RP11-114M1	178594	442	3	8	4	0	1	0.5	0
RP11-91H20	43016	2195	19	8	1	0	1	0.12	0
RP11-67J2	145625	281	2	1	0	0	0.12	0	0
RP11-34K15	41260	1753	13	8	0	5	1	0	0.62
RP11-19I19	58769	670	5	8	0	1	1	0	0.12
RP11-69G4	183149	311	2	8	0	1	1	0	0.12
RP11-205J24	55720	1765	13	3	0	2	0.38	0	0.67
RP11-170L13	155172	727	5	8	0	1	1	0	0.12
RP11-30N6	29766	2333	21	8	0	0	1	0	0
RP11-171A13	19239	169	2	8	0	0	1	0	0
RP11-60J16	20564	1333	10	8	1	2	1	0.12	0.25
RP11-88L12	172574	744	5	8	1	0	1	0.12	0
RP11-9L19	134313	273	2	8	0	2	1	0	0.25
RP11-133C15	53259	1361	10	7	2	1	0.88	0.29	0.14
RP11-27P20	42541	1896	15	7	0	2	0.88	0	0.29
RP11-32F23	4055	354	3	8	0	0	1	0	0
RP11-4G4	101310	1404	10	1	0	0	0.12	0	0

Table W1. (continued)

Clone	kb	Position	Chrom	NumPresent.All	NumGain.All	NumLost.All	PropPresent.All	PropGain.All	PropLost.All
RP11-61K4	53806	1905	15	8	0	1	1	0	0.12
RP11-124O2	54341	387	3	3	0	0	0.38	0	0
RP11-113K20	15945	761	6	8	1	0	1	0.12	0
RP11-35C24	133884	1445	10	8	0	4	1	0	0.5
RP11-42F24	61143	1914	15	6	0	1	0.75	0	0.17
RP11-220J13	136638	420	3	8	2	0	1	0.25	0
RP11-153B11	52816	2158	18	8	0	4	1	0	0.5
RP11-28D6	67456	1924	15	8	0	1	1	0	0.12
RP11-58A5	4965	642	5	6	1	1	0.75	0.17	0.17
RP11-49J9	20982	2321	21	8	0	0	1	0	0
RP11-60J21	78495	1936	15	8	0	2	1	0	0.25
RP11-59G13	57985	669	5	8	0	2	1	0	0.25
RP11-35I10	35153	2363	22	7	0	0	0.88	0	0
RP11-81C5	115231	699	5	8	0	5	1	0	0.62
RP11-9B21	96437	1949	15	8	0	1	1	0	0.12
RP11-15L8	66394	1553	11	8	1	0	1	0.12	0
RP11-135M13	15627	651	5	7	1	0	0.88	0.14	0
RP11-245K9	12686	1469	11	7	0	1	0.88	0	0.14
RP11-128C13	150065	723	5	4	0	0	0.5	0	0
RP11-62D9	76314	680	5	7	0	1	0.88	0	0.14
RP11-89P14	18158	1478	11	7	0	1	0.88	0	0.14
RP11-30A5	63059	47	1	7	0	0	0.88	0	0
RP11-3M23	47358	793	6	6	1	0	0.75	0.17	0
RP11-82P23	148396	720	5	8	0	0	1	0	0
RP11-249C5	165280	94	1	8	2	0	1	0.25	0
RP11-51N24	113606	823	6	8	0	2	1	0	0.25
RP11-90N23	159866	732	5	6	0	0	0.75	0	0
RP11-112G9	10039	1049	8	8	0	7	1	0	0.88
RP11-45N4	118011	1621	11	7	1	0	0.88	0.14	0
RP11-28P18	75042	806	6	8	0	3	1	0	0.38
RP11-18J23	48076	2201	19	8	0	2	1	0	0.25
RP11-87O12	122731	1629	11	7	2	0	0.88	0.29	0
RP11-224F8	19980	14	1	6	0	0	0.75	0	0
RP11-48M7	3775	2224	20	8	0	0	1	0	0
RP11-235I5	11539	1054	8	5	0	5	0.62	0	1
RP11-51A20	33624	28	1	7	0	1	0.88	0	0.14
RP11-7F10	21656	2251	20	1	0	1	0.12	0	1
RP11-31B7	12753	1057	8	6	0	5	0.75	0	0.83
RP11-120C2	57323	391	3	6	0	0	0.75	0	0
RP11-211K12	216257	132	1	8	1	1	1	0.12	0.12
RP11-29H19	43291	2275	20	8	1	0	1	0.12	0
RP11-93D21	20335	1067	8	7	0	6	0.88	0	0.86
RP11-26K11	11790	1206	9	7	0	2	0.88	0	0.29
RP11-70F16	31035	1222	9	8	0	3	1	0	0.38
RP11-76B12	25212	1076	8	8	0	4	1	0	0.5
CTB-51J22	72822	934	7	7	0	1	0.88	0	0.14
RP11-16A3	112785	1293	9	8	2	0	1	0.25	0
RP11-33D7	74944	1133	8	8	4	0	1	0.5	0
GS1-53F14	157964	1033	7	8	1	2	1	0.12	0.25
RP11-67I20	10000	2133	18	8	0	1	1	0	0.12
RP11-125K10	4820	1198	9	8	1	1	1	0.12	0.12
RP11-3J21	93059	1147	8	8	5	0	1	0.62	0
RP11-162A23	124347	1432	10	8	0	2	1	0	0.25
RP11-175I24	53657	503	4	8	0	1	1	0	0.12
RP11-20K4	66929	1554	11	7	2	0	0.88	0.29	0
RP11-142I8	132877	1443	10	8	0	4	1	0	0.5
RP11-253O5	44474	491	4	8	0	1	1	0	0.12
RP11-246J1	30505	1495	11	8	0	0	1	0	0
RP11-22P23	17056	765	6	7	0	0	0.88	0	0
RP11-64C15	65585	2169	18	6	0	2	0.75	0	0.33
RP11-206I1	45055	1526	11	7	0	2	0.88	0	0.29
RP11-14G23	40340	788	6	8	1	0	1	0.12	0
RP11-88I12	19023	2187	19	8	1	1	1	0.12	0.12
RP11-82B19	84963	238	2	8	0	1	1	0	0.12
RP11-183N7	224790	339	2	8	0	2	1	0	0.25
RP11-43P9	73966	1774	13	4	0	3	0.5	0	0.75
RP11-10M23	43145	789	6	7	1	0	0.88	0.14	0
RP11-111O7	1578	1314	10	8	1	4	1	0.12	0.5
RP11-100A3	92619	1782	13	6	0	1	0.75	0	0.17
RP11-20H19	155211	837	6	8	0	0	1	0	0
RP11-22B24	17956	1332	10	8	1	2	1	0.12	0.25
RP11-29B2	100907	1790	13	4	0	0	0.5	0	0
RP11-50A5	60133	1363	10	6	1	0	0.75	0.17	0

Table W1. (continued)

Clone	kb	Position	Chrom	NumPresent.All	NumGain.All	NumLost.All	PropPresent.All	PropGain.All	PropLost.All
RP11-181I11	30577	1350	10	8	1	1	1	0.12	0.12
RP11-64C21	29038	1745	13	6	0	1	0.75	0	0.17
RP11-210E16	229579	136	1	8	2	2	1	0.25	0.25
RP11-46G13	115612	1422	10	8	1	2	1	0.12	0.25
RP11-8E20	63911	1365	10	7	1	0	0.88	0.14	0
RP11-96F24	109560	69	1	8	0	1	1	0	0.12
RP11-103P20	36029	1510	11	8	0	2	1	0	0.25
RP11-69I18	72931	1379	10	8	2	1	1	0.25	0.12
RP11-212E22	239819	142	1	8	0	1	1	0	0.12
RP11-267L1	97426	1594	11	5	0	1	0.62	0	0.2
RP11-93O23	81837	1391	10	8	1	1	1	0.12	0.12
RP11-13C20	151964	287	2	7	0	2	0.88	0	0.29
RP11-32K21	52945	501	4	5	0	0	0.62	0	0
RP11-13J23	58647	1913	15	8	0	1	1	0	0.12
RP11-34D15	101703	1406	10	8	2	2	1	0.25	0.25
RP11-129G16	102056	404	3	8	2	0	1	0.25	0
RP11-265I6	35981	2148	18	7	0	1	0.88	0	0.14
RP11-182P7	111544	1418	10	8	2	4	1	0.25	0.5
RP11-178K17	190400	450	3	7	4	0	0.88	0.57	0
RP11-118P21	43862	2197	19	8	0	0	1	0	0
RP11-13C20	151964	287	2	8	0	2	1	0	0.25
RP11-17I11	41630	1754	13	8	0	7	1	0	0.88
RP11-15P2	66185	674	5	6	0	1	0.75	0	0.17
RP11-38I11	184695	314	2	8	0	2	1	0	0.25
RP11-205C23	71118	1768	13	5	0	2	0.62	0	0.4
RP11-94L2	163302	735	5	6	0	1	0.75	0	0.17
RP11-147H1	32217	2342	21	8	0	0	1	0	0
RP11-77G15	34254	193	2	8	0	1	1	0	0.12
RP11-43K6	21867	1337	10	8	1	0	1	0.12	0
RP11-105L4	172986	745	5	8	1	0	1	0.12	0
RP11-29N17	141898	278	2	7	0	1	0.88	0	0.14
RP11-14I14	64542	1366	10	8	2	0	1	0.25	0
RP11-117J16	40050	1894	15	8	0	2	1	0	0.25
RP11-128A5	8687	356	3	8	0	0	1	0	0
RP11-21N23	103585	1409	10	4	1	0	0.5	0.25	0
RP11-30I7	54130	1906	15	8	0	1	1	0	0.12
RP11-169G24	56154	390	3	8	0	0	1	0	0
RP11-163E21	16761	764	6	8	1	0	1	0.12	0
RP11-120E20	3582	1451	11	8	0	0	1	0	0
RP11-100N8	61304	1915	15	7	0	1	0.88	0	0.14
RP11-72E23	146387	427	3	8	1	0	1	0.12	0
RP11-75O12	59636	2165	18	8	0	4	1	0	0.5
RP11-64K10	68548	1926	15	5	1	0	0.62	0.2	0
RP11-35K22	5802	643	5	8	1	2	1	0.12	0.25
RP11-86J21	22225	2322	21	8	0	0	1	0	0
RP11-58C20	81944	1938	15	8	0	1	1	0	0.12
RP11-87D20	66059	673	5	8	0	1	1	0	0.12
RP11-108C6	37172	2364	22	7	0	0	0.88	0	0
RP11-265M23	122554	703	5	7	0	4	0.88	0	0.57
RP11-209M9	4188	1453	11	8	0	0	1	0	0
RMC20P160	10282	2236	20	8	1	2	1	0.12	0.25
RP11-261B20	15871	652	5	7	1	0	0.88	0.14	0
RP11-206L19	11689	1467	11	6	0	0	0.75	0	0
RP11-82E8	157700	730	5	8	0	1	1	0	0.12
RP11-1E10	78971	682	5	6	0	1	0.75	0	0.17
RP11-62G18	19596	1482	11	8	0	0	1	0	0
RP11-114K16	75136	52	1	8	0	0	1	0	0
RP11-284E1	53763	797	6	6	1	1	0.75	0.17	0.17
RP11-216N13	147258	718	5	7	0	0	0.88	0	0
RP11-212K9	180113	103	1	8	2	0	1	0.25	0
RP11-32P13	136296	833	6	8	0	0	1	0	0
RP11-88J19	162135	734	5	7	0	1	0.88	0	0.14
RP11-246G24	2356	1039	8	7	0	7	0.88	0	1
RP11-62A14	118862	1622	11	7	1	1	0.88	0.14	0.14
RP11-13I21	91180	810	6	8	0	3	1	0	0.38
RP11-210C7	48859	2202	19	8	0	1	1	0	0.12
RP11-20M1	125860	1632	11	8	1	0	1	0.12	0
RP11-57F20	23269	19	1	7	0	0	0.88	0	0
RP11-235C20	5082	2228	20	8	0	3	1	0	0.38
RP11-218N24	11734	1055	8	6	0	5	0.75	0	0.83
RP11-118E3	35000	30	1	7	1	0	0.88	0.14	0
RP11-77C2	23093	2252	20	8	0	3	1	0	0.38
RP11-92C1	12846	1058	8	8	0	7	1	0	0.88



Table W1. (continued)

Clone	kb	Position	Chrom	NumPresent.All	NumGain.All	NumLost.All	PropPresent.All	PropGain.All	PropLost.All
RP11-180G14	59521	393	3	8	0	0	1	0	0
RP11-149C8	219213	133	1	8	1	1	1	0.12	0.12
RP11-69I10	42719	2273	20	5	0	0	0.62	0	0
RP11-50E20	21200	1068	8	3	0	2	0.38	0	0.67
RP11-28N6	1301	1194	9	8	1	3	1	0.12	0.38
RP11-85P21	118302	1299	9	8	0	1	1	0	0.12
RP11-70L1	25299	1077	8	8	0	5	1	0	0.62
GS1-193F11	120591	991	7	8	0	1	1	0	0.12
RP11-14J9	73222	1241	9	8	0	0	1	0	0
RP11-93J13	78060	1137	8	5	3	0	0.62	0.6	0
GS1-259E18	128687	1001	7	6	0	0	0.75	0	0
RP11-24G5	10150	2134	18	8	0	1	1	0	0.12
RP11-122A20	2644	1195	9	5	0	1	0.62	0	0.2
RP11-118O8	92919	1146	8	8	5	0	1	0.62	0
RP11-47G11	125275	1434	10	8	0	2	1	0	0.25
RP11-80L11	55111	506	4	6	0	0	0.75	0	0
RP11-175G7	11492	358	3	7	0	1	0.88	0	0.14
RP11-88C10	636	2121	18	5	0	0	0.62	0	0
RP11-105F21	44739	492	4	7	0	0	0.88	0	0
RP11-215F2	31328	1497	11	7	0	2	0.88	0	0.29
RP11-3D15	21716	769	6	8	1	0	1	0.12	0
RP11-49H23	64907	2168	18	6	0	2	0.75	0	0.33
RP11-12C11	44934	1525	11	8	0	1	1	0	0.12
RP11-91H14	43811	790	6	8	1	0	1	0.12	0
RP11-206O6	33315	2188	19	8	1	0	1	0.12	0
RP11-84M16	86051	240	2	8	0	0	1	0	0
RP11-68H19	225795	340	2	7	0	2	0.88	0	0.29
RP11-137M6	75831	1775	13	8	1	4	1	0.12	0.5
RP11-40P17	51035	795	6	8	1	0	1	0.12	0
RP11-180C18	1482	1313	10	8	1	4	1	0.12	0.5
RP11-40H10	93260	1783	13	4	1	0	0.5	0.25	0
RP11-6H14	2197	1315	10	8	1	3	1	0.12	0.38
RP11-73E18	22794	1342	10	8	1	0	1	0.12	0
RP11-2L10	101246	1791	13	6	0	0	0.75	0	0
RP11-99D16	69318	1370	10	3	0	0	0.38	0	0
RP11-127L3	44121	1355	10	8	2	0	1	0.25	0
RP11-63C16	29031	1744	13	7	1	1	0.88	0.14	0.14
RP11-261B20	15871	652	5	8	2	0	1	0.25	0
RP11-7P17	122745	1428	10	7	0	1	0.88	0	0.14
RP11-237J7	66053	1367	10	3	0	0	0.38	0	0
RP11-130B18	115000	78	1	8	0	1	1	0	0.12
RP11-12D19	43689	1522	11	8	0	1	1	0	0.12
RP11-152N13	74222	1382	10	6	2	0	0.75	0.33	0
RP11-87J7	10565	157	2	5	1	0	0.62	0.2	0
RP11-47N15	111630	1613	11	8	2	1	1	0.25	0.12
RP11-284D10	85060	1392	10	8	1	4	1	0.12	0.5
RP11-39A8	168191	296	2	5	0	0	0.62	0	0
RP11-98G22	54688	504	4	8	1	0	1	0.12	0
RP11-70A7	64033	1919	15	4	0	0	0.5	0	0
RP11-105N15	102961	1408	10	8	2	2	1	0.25	0.25
RP11-153K19	113988	409	3	6	0	0	0.75	0	0
RP11-43K24	45621	2152	18	8	0	2	1	0	0.25
RP11-31O24	114186	1420	10	4	3	1	0.5	0.75	0.25
RP11-20I20	1083	456	4	7	1	2	0.88	0.14	0.29
RP11-19H11	48973	2203	19	8	0	1	1	0	0.12
RP11-185M22	152865	289	2	8	0	1	1	0	0.12
RP11-217H23	43656	1756	13	8	0	7	1	0	0.88
RP11-207B2	81757	684	5	7	0	1	0.88	0	0.14
RP11-30M1	195683	321	2	8	0	2	1	0	0.25
RP11-94F7	71104	1767	13	5	0	3	0.62	0	0.6
RP11-69A18	171198	743	5	8	0	2	1	0	0.25
RP11-12N9	36747	2348	21	8	0	0	1	0	0
RP11-163N23	36574	196	2	7	0	0	0.88	0	0
RP11-73J23	23586	1343	10	8	1	0	1	0.12	0
RP11-48K2	173001	746	5	7	0	0	0.88	0	0
RP11-72H23	149013	284	2	1	0	1	0.12	0	1
RP11-6P16	70407	1372	10	8	2	0	1	0.25	0
RP11-62L9	37198	1892	15	8	1	1	1	0.12	0.12
RP11-279L16	15171	362	3	8	0	0	1	0	0
RP11-128H11	107185	1412	10	4	1	2	0.5	0.25	0.5
RP11-99L18	57302	1908	15	8	0	1	1	0	0.12
RP11-114P15	62456	397	3	8	0	0	1	0	0
RP11-43B4	20118	766	6	8	1	0	1	0.12	0

Table W1. (continued)

Clone	kb	Position	Chrom	NumPresent.All	NumGain.All	NumLost.All	PropPresent.All	PropGain.All	PropLost.All
RP11-28I11	10500	1462	11	8	3	0	1	0.38	0
RP11-50N10	62114	1916	15	3	0	0	0.38	0	0
RP11-65L11	152627	431	3	8	1	1	1	0.12	0.12
RP11-57F7	66822	2170	18	7	0	3	0.88	0	0.43
RP11-21I7	70071	1927	15	8	0	1	1	0	0.12
RP11-29N3	11435	648	5	7	1	2	0.88	0.14	0.29
RP11-15H6	26666	2326	21	7	0	0	0.88	0	0
RP11-68P22	82928	1939	15	8	0	1	1	0	0.12
RP11-267K19	67819	677	5	8	0	2	1	0	0.25
RP11-206B19	40483	2368	22	3	0	0	0.38	0	0
RP11-47L19	121395	702	5	7	0	3	0.88	0	0.43
RP11-98L18	6113	1456	11	8	0	1	1	0	0.12
RMC20P178	11519	2242	20	8	0	2	1	0	0.25
RP11-253B9	37905	661	5	8	1	0	1	0.12	0
RP11-21L19	14206	1471	11	6	0	0	0.75	0	0
RP11-15F10	169122	740	5	8	1	0	1	0.12	0
RP11-135F5	86020	686	5	8	0	2	1	0	0.25
RP11-262B15	9853	1048	8	4	0	2	0.5	0	0.5
RP11-198H14	78407	54	1	8	0	1	1	0	0.12
RP11-277K21	64091	802	6	5	0	0	0.62	0	0
RP11-109B15	151601	725	5	8	0	0	1	0	0
RP11-196B7	179543	102	1	8	4	0	1	0.5	0
RP11-59D4	4301	1317	10	8	1	3	1	0.12	0.38
RP11-128E4	164959	737	5	3	0	0	0.38	0	0
RP11-240A17	1524	1036	8	6	0	4	0.75	0	0.67
RP11-8K10	119095	1623	11	8	2	0	1	0.25	0
RP11-14G17	99673	812	6	8	1	2	1	0.12	0.25
RP11-21J15	49695	2204	19	8	0	0	1	0	0
RP11-41K5	126228	1633	11	7	1	0	0.88	0.14	0
RP11-72I19	22834	18	1	8	0	0	1	0	0
RP11-149O7	5513	2230	20	7	0	2	0.88	0	0.29
RP11-241I4	10209	1050	8	8	0	7	1	0	0.88
RP11-219O7	36499	31	1	8	1	1	1	0.12	0.12
RP11-32N12	24179	2254	20	8	0	3	1	0	0.38
RP11-236O1	15646	1059	8	7	0	6	0.88	0	0.86
RP11-129B22	63995	399	3	8	2	0	1	0.25	0
RP11-192M1	223184	135	1	7	1	1	0.88	0.14	0.14
RP11-30F23	43830	2276	20	8	0	0	1	0	0
RP11-274M9	22577	1070	8	6	0	5	0.75	0	0.83
RP11-26H17	13369	1209	9	8	0	2	1	0	0.25
RP11-84C18	98111	1278	9	4	0	1	0.5	0	0.25
RP11-164H24	25316	1078	8	8	0	6	1	0	0.75
GS1-27F18	79500	942	7	8	0	0	1	0	0
RP11-12N24	5180	1199	9	8	1	2	1	0.12	0.25
RP11-90B7	79384	1138	8	7	5	0	0.88	0.71	0
CTC-361L6	123941	995	7	8	0	2	1	0	0.25
RP11-81J13	11547	2136	18	8	2	0	1	0.25	0
RP11-9M16	112532	1292	9	8	0	0	1	0	0
RP11-27I15	93148	1148	8	8	5	0	1	0.62	0
RP11-5M6	126249	1435	10	8	0	1	1	0	0.12
RP11-217B22	48819	500	4	7	0	1	0.88	0	0.14
RP11-121D3	2121	352	3	8	4	0	1	0.5	0
RP11-78H1	2137	2123	18	3	0	0	0.38	0	0
RP11-238D1	45843	494	4	5	0	0	0.62	0	0
RP11-127K23	33269	1501	11	8	0	2	1	0	0.25
RP11-53I19	23410	771	6	8	1	1	1	0.12	0.12
RP11-4B17	72859	2172	18	8	0	3	1	0	0.38
RP11-39G12	46591	1528	11	8	0	1	1	0	0.12
RP11-121G20	44168	791	6	8	2	0	1	0.25	0
RP11-152P7	33418	2189	19	8	1	0	1	0.12	0
RP11-67L23	96719	242	2	8	0	0	1	0	0
RP11-71H20	232440	343	2	8	0	2	1	0	0.25
RP11-122N18	76215	1776	13	8	0	3	1	0	0.38
RP11-111P16	55483	799	6	5	0	0	0.62	0	0
RP11-23O12	3622	1316	10	6	0	2	0.75	0	0.33
RP11-14C20	96059	1784	13	6	1	0	0.75	0.17	0
RP11-5B23	6632	1319	10	7	1	3	0.88	0.14	0.43
RP11-34I5	21378	1334	10	8	1	0	1	0.12	0
RP11-86B6	102921	1792	13	4	1	0	0.5	0.25	0
RP11-52K17	70854	1373	10	8	2	0	1	0.25	0
RP11-20J15	43988	1354	10	7	1	0	0.88	0.14	0
RP11-14A4	37927	1747	13	8	0	5	1	0	0.62
RP11-88L18	17465	656	5	8	1	1	1	0.12	0.12

Table W1. (continued)

Clone	kb	Position	Chrom	NumPresent.All	NumGain.All	NumLost.All	PropPresent.All	PropGain.All	PropLost.All
RP11-16P8	127765	1437	10	5	0	1	0.62	0	0.2
RP11-280H23	68620	1369	10	8	1	1	1	0.12	0.12
RP11-234M3	164403	91	1	6	2	0	0.75	0.33	0
RP11-135H8	56376	1535	11	8	1	0	1	0.12	0
RP11-243C1	75118	1383	10	7	2	0	0.88	0.29	0
RP11-57F9	28578	184	2	7	0	0	0.88	0	0
RP11-94C16	119486	1624	11	8	3	0	1	0.38	0
RP11-67L13	92330	1397	10	8	0	3	1	0	0.38
RP11-30M1	195683	321	2	8	0	2	1	0	0.25
RP11-135H2	56462	507	4	4	0	1	0.5	0	0.25
RP11-46C10	72148	1930	15	4	0	0	0.5	0	0
RP11-287G20	105823	1411	10	8	1	4	1	0.12	0.5
RP11-220G20	118469	412	3	4	0	0	0.5	0	0
RP11-4G8	54596	2159	18	4	0	2	0.5	0	0.5
RP11-106N20	114531	1421	10	4	2	1	0.5	0.5	0.25
RP11-7A6	4936	460	4	7	1	1	0.88	0.14	0.14
RP11-39J16	54420	2210	19	8	0	0	1	0	0
RP11-19I19	156486	292	2	8	0	1	1	0	0.12
RP11-30N18	43382	1755	13	4	0	3	0.5	0	0.75
RP11-204D12	95881	688	5	7	0	3	0.88	0	0.43
RP11-57C6	201831	325	2	8	0	1	1	0	0.12
RP11-11C5	70914	1766	13	4	1	2	0.5	0.25	0.5
RP11-24N8	5618	754	6	8	0	0	1	0	0
RP11-1P3	40277	2350	21	8	0	1	1	0	0.12
RP11-163N11	37891	198	2	5	0	1	0.62	0	0.2
RP11-29I13	25593	1346	10	7	1	1	0.88	0.14	0.14
RP11-125L2	173496	747	5	8	1	0	1	0.12	0
RP11-50J20	160851	295	2	8	0	1	1	0	0.12
RP11-29P24	72010	1376	10	3	0	0	0.38	0	0
RP11-46O11	37687	1893	15	8	1	1	1	0.12	0.12
RP11-208G16	22373	365	3	8	0	0	1	0	0
RP11-11I6	112985	1419	10	7	1	3	0.88	0.14	0.43
RP11-120O11	57515	1909	15	3	0	0	0.38	0	0
RP11-146E16	67590	401	3	7	0	0	0.88	0	0
RP11-273J1	22030	770	6	5	0	1	0.62	0	0.2
RP11-7O20	14838	1473	11	6	0	0	0.75	0	0
RP11-207J8	65746	1923	15	8	0	2	1	0	0.25
RP11-198G24	165128	434	3	6	0	0	0.75	0	0
RP11-75H6	903	2177	19	7	1	0	0.88	0.14	0
RP11-106M3	70224	1928	15	8	0	1	1	0	0.12
RP11-269O14	16684	655	5	8	1	0	1	0.12	0
RP11-191I6	31454	2340	21	7	1	0	0.88	0.14	0
RP11-43K17	83155	1940	15	7	0	1	0.88	0	0.14
RP11-172K14	74612	679	5	7	0	1	0.88	0	0.14
RP11-61L22	43995	2370	22	4	1	1	0.5	0.25	0.25
RP11-209F21	124962	704	5	7	0	4	0.88	0	0.57
RP11-30I3	6278	1457	11	8	0	0	1	0	0
RP11-17H13	54223	664	5	8	0	2	1	0	0.25
RP11-39F19	14886	1474	11	8	0	0	1	0	0
RP11-21I6	177772	749	5	7	2	1	0.88	0.29	0.14
RP11-45O11	89850	687	5	7	0	2	0.88	0	0.29
RP11-112O8	4725	1043	8	8	0	1	1	0	0.12
RP11-89A19	80577	56	1	8	0	1	1	0	0.12
RP11-217L13	79287	807	6	5	0	0	0.62	0	0
RP11-86C20	152667	726	5	3	0	0	0.38	0	0
RP11-124A11	212702	127	1	7	0	1	0.88	0	0.14
RP11-85M7	6649	1320	10	8	1	3	1	0.12	0.38
RP11-173F9	164945	736	5	1	0	0	0.12	0	0
RP11-117P11	2058	1037	8	7	0	6	0.88	0	0.86
RP11-117K21	119806	1625	11	6	1	0	0.75	0.17	0
RP11-165E15	108282	817	6	8	0	2	1	0	0.25
RP11-126L20	50685	2206	19	8	0	0	1	0	0
RP11-112M22	127680	1634	11	8	0	0	1	0	0
RP11-285H13	26900	20	1	8	0	0	1	0	0
RP11-9G21	6138	2231	20	8	0	3	1	0	0.38
RP11-235F10	9235	1046	8	3	0	2	0.38	0	0.67
RP11-207P5	36935	32	1	5	1	0	0.62	0.2	0
RP11-58B10	24412	2255	20	8	1	1	1	0.12	0.12
RP11-182G2	15660	1060	8	7	0	5	0.88	0	0.71
RP11-179B9	64165	400	3	6	3	0	0.75	0.5	0
RP11-155C15	231705	137	1	7	1	2	0.88	0.14	0.29
RP11-169A6	44334	2278	20	8	0	0	1	0	0
RP11-110I16	21482	1069	8	8	0	7	1	0	0.88

Table W1. (continued)

Clone	kb	Position	Chrom	NumPresent.All	NumGain.All	NumLost.All	PropPresent.All	PropGain.All	PropLost.All
RP11-23D11	80406	1248	9	8	0	1	1	0	0.12
RP11-85J5	24524	1217	9	8	0	0	1	0	0
RP11-199N14	26290	1080	8	6	0	4	0.75	0	0.67
CTC-247K5	65115	923	7	8	1	0	1	0.12	0
RP11-10I9	111466	1290	9	8	0	1	1	0	0.12
RP11-195P3	80209	1140	8	7	5	0	0.88	0.71	0
CTC-305I2	101400	968	7	7	0	0	0.88	0	0
RP11-151D11	13082	2139	18	7	1	0	0.88	0.14	0
RP11-280I16	4408	1196	9	8	1	1	1	0.12	0.12
RP11-102K7	101126	1159	8	8	5	0	1	0.62	0
RP11-32H11	128242	1438	10	3	0	1	0.38	0	0.33
RP11-63E13	66604	509	4	7	0	2	0.88	0	0.29
RP11-245E5	22735	366	3	8	1	0	1	0.12	0
RP11-106O1	3649	2127	18	3	0	0	0.38	0	0
RP11-232D21	48102	497	4	2	1	0	0.25	0.5	0
RP11-102C11	33539	1503	11	8	1	1	1	0.12	0.12
RP11-52C20	23944	773	6	7	1	0	0.88	0.14	0
RP11-130J1	73109	2173	18	8	0	2	1	0	0.25
RP11-217G11	56629	1536	11	8	1	0	1	0.12	0
RP11-58P9	48061	794	6	8	1	0	1	0.12	0
RP11-46I12	34302	2190	19	7	1	0	0.88	0.14	0