



ALMA Survey of Lupus Protoplanetary Disks. II. Gas Disk Radii

M. Ansdell^{1,2,3}, J. P. Williams¹, L. Trapman⁴, S. E. van Terwisga⁴, S. Facchini⁵, C. F. Manara⁶, N. van der Marel^{1,7},
A. Miotello⁶, M. Tazzari⁸, M. Hogerheijde^{4,9}, G. Guidi¹⁰, L. Testi^{6,10}, and E. F. van Dishoeck^{4,5}

¹Institute for Astronomy, University of Hawai'i at Mānoa, Honolulu, HI 96822, USA

²Department of Astronomy, University of California, Berkeley, CA 94720, USA

³Center for Integrative Planetary Science, University of California, Berkeley, CA 94720, USA

⁴Leiden Observatory, Leiden University, P.O. Box 9513, 2300 RA Leiden, The Netherlands

⁵Max-Planck-Institut für Extraterrestrische Physik, Giessenbachstraße 1, D-85748 Garching, Germany

⁶European Southern Observatory, Karl-Schwarzschild-Straße 2, D-85748 Garching bei München, Germany

⁷Herzberg Astronomy & Astrophysics Programs, NRC of Canada, 5017 West Saanich Road, Victoria, BC V9E 2E7, Canada

⁸Institute of Astronomy, University of Cambridge, Madingley Road, CB3 0HA, Cambridge, UK

⁹Anton Pannekoek Institute for Astronomy, University of Amsterdam, Science Park 904, 1098 XH Amsterdam, The Netherlands

¹⁰INAF-Osservatorio Astrofisico di Arcetri, Largo E. Fermi 5, I-50125 Firenze, Italy

Received 2018 January 2; revised 2018 March 2; accepted 2018 March 13; published 2018 May 17

Abstract

We present Atacama Large Millimeter/Sub-Millimeter Array (ALMA) Band 6 observations of a complete sample of protoplanetary disks in the young ($\sim 1\text{--}3$ Myr) Lupus star-forming region, covering the 1.33 mm continuum and the ^{12}CO , ^{13}CO , and $\text{C}^{18}\text{O } J = 2\text{--}1$ lines. The spatial resolution is $\sim 0''.25$ with a medium 3σ continuum sensitivity of 0.30 mJy, corresponding to $M_{\text{dust}} \sim 0.2 M_{\oplus}$. We apply Keplerian masking to enhance the signal-to-noise ratios of our ^{12}CO zero-moment maps, enabling measurements of gas disk radii for 22 Lupus disks; we find that gas disks are universally larger than millimeter dust disks by a factor of two on average, likely due to a combination of the optically thick gas emission and the growth and inward drift of the dust. Using the gas disk radii, we calculate the dimensionless viscosity parameter, α_{visc} , finding a broad distribution and no correlations with other disk or stellar parameters, suggesting that viscous processes have not yet established quasi-steady states in Lupus disks. By combining our 1.33 mm continuum fluxes with our previous 890 μm continuum observations, we also calculate the millimeter spectral index, α_{mm} , for 70 Lupus disks; we find an anticorrelation between α_{mm} and millimeter flux for low-mass disks ($M_{\text{dust}} \lesssim 5$), followed by a flattening as disks approach $\alpha_{\text{mm}} \approx 2$, which could indicate faster grain growth in higher-mass disks, but may also reflect their larger optically thick components. In sum, this work demonstrates the continuous stream of new insights into disk evolution and planet formation that can be gleaned from unbiased ALMA disk surveys.

Key words: accretion, accretion disks – circumstellar matter – planetary systems – protoplanetary disks – stars: pre-main sequence – stars: variables: T Tauri, Herbig Ae/Be

Supporting material: machine-readable tables

1. Introduction

Thousands of exoplanet systems have now been detected and characterized, but exactly how these planets formed remains unclear because our understanding of the structure and evolution of the preceding protoplanetary disks is still incomplete (e.g., Morbidelli & Raymond 2016). Early infrared (IR) surveys of nearby star-forming regions, which probed unresolved and optically thick inner disk emission, revealed that protoplanetary disks disperse quickly, typically within $\sim 5\text{--}10$ Myr (e.g., Hernández et al. 2007). The specifics of this dispersal, however, are still needed to understand how disks evolve into planetary systems. The Atacama Large Millimeter/Sub-Millimeter Array (ALMA) is now enabling high-resolution and high-sensitivity submillimeter/millimeter (submm/mm) observations of optically thin disk emission in both the continuum and line. The combination of these ALMA observations with other state-of-the-art data sets, in particular those from facilities like the X-Shooter spectrograph at the Very Large Telescope (VLT/X-Shooter) for constraining host star properties, is providing the needed insights into disk evolutionary processes (Ansdell et al. 2016; Manara et al. 2016; Pascucci et al. 2016; Lodato et al. 2017; Mulders et al. 2017; Rosotti et al. 2017).

Moreover, large-scale ALMA surveys of nearby star-forming regions with ages spanning the disk lifetime

($\sim 1\text{--}10$ Myr) are providing quantitative characterizations of disk dispersal and revealing statistical properties that can be linked to exoplanet trends. Combining the recent ALMA surveys of the protoplanetary disk populations in the young ($\sim 1\text{--}3$ Myr) Lupus (Ansdell et al. 2016) and Chamaeleon I (Pascucci et al. 2016) regions with those of the intermediate-age ($\sim 3\text{--}5$ Myr) σ Orionis cluster (Ansdell et al. 2017) and the evolved ($\sim 5\text{--}10$ Myr) Upper Sco association (Barenfeld et al. 2016) reveal a clear decline in disk dust mass (M_{dust}) with age (see Figure 8 in Ansdell et al. 2017). Even at just a few Myr, only $\sim 25\%$ of disks have sufficient reservoirs of dust to form giant planet cores ($M_{\text{dust}} \gtrsim 10 M_{\oplus}$), which is in line with the rarity of giant planets seen in the exoplanet population (e.g., Cassan et al. 2012; Fressin et al. 2013; Montet et al. 2014; Bowler et al. 2015; Gaidos et al. 2016). Alternatively, large amounts of solids could be rapidly locked into larger bodies, such as pebbles and planetesimal, which are undetected in these submm/mm surveys that can only probe dust grains up to roughly centimeter sizes; this scenario is more consistent with evidence from our own solar system, which points to the formation of millimeter- to centimeter-sized chondrules (e.g., Connelly et al. 2008) and even the differentiation of asteroids (e.g., Kleine et al. 2002) within just a few Myr. Yet another possibility is that unconstrained amounts of dust are hidden in the optically thick inner disk regions due to the growth and

inward radial drift of the dust (Weidenschilling 1977). Disentangling these scenarios will be critical to understanding the timescales of disk evolution and planet formation.

Another important property is the disk size, which is a fundamental input into planet formation models that can also be used to distinguish between different disk evolutionary pathways. Disks are traditionally thought to evolve through viscous accretion (Lynden-Bell & Pringle 1974), which predicts that gaseous disks spread outward with age due to the redistribution of angular momentum to counter the accretion of disk material onto the star. Indeed, Tazzari et al. (2017) found that Lupus disks tend to be larger and less massive than slightly younger Taurus and ρ Ophiuchus disks, which they tentatively attributed to viscous evolution. The growth and inward radial drift of solids (Birnstiel & Andrews 2014), potentially in combination with optical depth effects (Guilloteau & Dutrey 1998; Facchini et al. 2017), can also cause the dust disk to appear smaller than the gas disk at submm/mm wavelengths, as seen for several individual disks (Isella et al. 2007; Panić et al. 2009; Andrews et al. 2012; de Gregorio-Monsalvo et al. 2013; Cleeves et al. 2016). If magnetohydrodynamic (MHD) winds play an important role in disk evolution (e.g., Bai et al. 2016), then they may suppress the viscous spreading of disks by removing angular momentum (rather than redistributing it outward), which could help to explain the surprisingly small dust disk radii ($\lesssim 20$ au) seen in the ALMA surveys of Lupus, ρ Ophiuchus, and Upper Sco (Barenfeld et al. 2017; Cox et al. 2017; Tazzari et al. 2017).

In the first paper of this series (Ansdell et al. 2016; hereafter Paper I), we used ALMA to observe a near-complete sample of protoplanetary disks in the Lupus star-forming region in the $890\ \mu\text{m}$ (Band 7) continuum as well as the ^{13}CO and C^{18}O $J = 3-2$ isotopologue lines. The focus of Paper I was to constrain both dust and gas masses for a large, unbiased population of protoplanetary disks within a single star-forming region, allowing us to perform statistical studies related to disk mass. In this work, we present new ALMA observations of the complete sample of Lupus protoplanetary disks in the $1.33\ \text{mm}$ (Band 6) continuum as well as in the ^{12}CO , ^{13}CO , and C^{18}O $J = 2-1$ lines. These new data, in particular with the addition of ^{12}CO , now allow us to add the gas disk size to our statistical studies. Moreover, when also considering our previous Band 7 data, we can study processes such as viscous evolution as well as dust grain growth and radial drift.

We describe our sample in Section 2, present our ALMA observations in Section 3, and give the measured continuum and line fluxes in Section 4. In Section 5, we measure disk radii and disk masses, as well as identify individual objects of interest. Our findings are discussed in the context of disk evolution and planet formation in Section 6, and we summarize our work in Section 7.

2. Lupus Sample

The Lupus complex contains four main star-forming clouds (Lupus I–IV) and is one of the youngest and closest star-forming regions (see review in Comerón 2008). Lupus I, III, and IV were observed for the c2d *Spitzer* legacy project (Evans et al. 2009), which revealed high disk fractions (70%–80%; Merín et al. 2008) consistent with other young disk populations, while Lupus II contains one of the most active nearby

T Tauri stars, RU Lup. Lupus is typically assumed to be $\sim 1-3$ Myr old (Comerón 2008, and references therein), but the average age may be as high as 3 ± 2 Myr (Alcalá et al. 2014). As in Paper I, we assume that Lupus III is located at 200 pc, while the other clouds are slightly closer at 150 pc.

Our sample consists of young stellar objects (YSOs) in Lupus I–IV that are more massive than brown dwarfs (i.e., $M_* > 0.1 M_\odot$) and host protoplanetary disks (i.e., have Class II or flat IR excess). The preliminary stellar masses used for our sample selection were estimated by fitting absolute J -band magnitudes to a 3 Myr Siess et al. (2000) model isochrone. Disk classifications were taken from the literature and primarily derived from the IR spectral index slope (α_{IR}) between the 2MASS K_S ($2.2\ \mu\text{m}$) and *Spitzer* MIPS-1 ($24\ \mu\text{m}$) bands; for sources without *Spitzer* data, disk classifications were approximated from IR excesses and/or accretion signatures (e.g., $\text{H}\alpha$ 6563 Å emission). We do not exclude known binaries, as the binary fraction in Lupus is poorly constrained.

We identify 95 Lupus members fitting these criteria in the published catalogs of Lupus disks (Hughes et al. 1994; Comerón 2008; Merín et al. 2008; Mortier et al. 2011; Bustamante et al. 2015; Dunham et al. 2015). We note that our sample from Paper I consisted of 93 sources: in this work, we include 4 additional sources in our sample (Sz 102, J15560210-3655282, EX Lup, and Sz 75/GQ Lup) because Lupus membership was confirmed via radial velocity (RV) measurements and/or re-classification of disk types based on spectra (Frasca et al. 2017). We also remove 2 sources (J16104536-3854547 and J16121120-3832197) as VLT/X-Shooter spectra (Alcalá et al. 2017) have revealed them as background giants due to discrepant surface gravities and RVs (Frasca et al. 2017); these 2 sources were observed, but remain undetected in both our ALMA Band 7 and Band 6 observations.

Table 1 gives the 95 Lupus disks in our sample, and Figure 1 shows their spectral type distribution. For 76 sources, we provide stellar masses (M_*) from Alcalá et al. (2014, 2017), who derived these values using Siess et al. (2000) evolutionary models with stellar effective temperatures (T_{eff}) and luminosities (L_*) estimated from VLT/X-Shooter spectra. We do not provide M_* values for the remaining 19 sources, many of which are obscured with flat IR excesses, which complicates the derivation of accurate stellar properties.

3. ALMA Observations

Our ALMA Cycle 3 program (ID: 2015.1.00222.S; PI: Williams) observed 86 sources in our sample in Band 6 on 2016 July 24 and September 8 using 58 12 m antennas on baselines of 15–1110 m and 15–2483 m, respectively. The continuum spectral windows were centered on 234.28 and 216.47 GHz with bandwidths of 2.00 and 1.88 GHz, respectively, for a bandwidth-weighted mean continuum frequency of 225.66 GHz ($1.33\ \text{mm}$). On-source integration times were 1.2 minute per target for a median continuum rms of $0.10\ \text{mJy beam}^{-1}$.

The spectral setup also included three windows covering the ^{12}CO , ^{13}CO , and C^{18}O $J = 2-1$ transitions. These spectral windows were centered on 230.51, 220.38, and 219.54 GHz, respectively, with bandwidths of 0.12 GHz, channel widths of 0.24 MHz, and velocity resolutions of $0.16\ \text{km s}^{-1}$. Data were pipeline calibrated by NRAO and included flux, bandpass, and gain calibrations. Flux and bandpass calibrations used

Table 1
1330 μm Continuum Properties

Source	R.A. _{J2000}	Decl. _{J2000}	Dist (pc)	SpT	M_*/M_\odot	References	F_{cont} (mJy)	rms (mJy beam ⁻¹)	M_{dust} (M_\oplus)
Sz 65	15:39:27.753	-34:46:17.577	150	K7.0	0.76 \pm 0.18	2	29.94 \pm 0.20	0.12	20.24 \pm 0.14
Sz 66	15:39:28.264	-34:46:18.450	150	M3.0	0.31 \pm 0.04	1	6.42 \pm 0.18	0.13	4.34 \pm 0.12
J15430131-3409153	15:43:01.290	-34:09:15.400	150	-0.24 \pm 0.09	0.12	-0.16 \pm 0.06
J15430227-3444059	15:43:02.290	-34:44:06.200	150	0.00 \pm 0.09	0.10	0.00 \pm 0.06
J15445789-3423392	15:44:57.900	-34:23:39.500	150	M5.0	0.12 \pm 0.03	1	0.12 \pm 0.09	0.10	0.08 \pm 0.06
J15450634-3417378	15:45:06.322	-34:17:38.332	150	6.18 \pm 0.15	0.11	4.18 \pm 0.10
J15450887-3417333	15:45:08.852	-34:17:33.835	150	M5.5	0.14 \pm 0.03	2	20.70 \pm 0.18	0.12	14.00 \pm 0.12
Sz 68	15:45:12.849	-34:17:31.071	150	K2.0	2.13 \pm 0.34	2	66.38 \pm 0.20	0.18	44.88 \pm 0.14
Sz 69	15:45:17.391	-34:18:28.685	150	M4.5	0.19 \pm 0.03	1	8.05 \pm 0.15	0.11	5.44 \pm 0.10
Sz 71	15:46:44.709	-34:30:36.054	150	M1.5	0.42 \pm 0.11	1	69.15 \pm 0.31	0.12	46.76 \pm 0.21

References. (1) Alcalá et al. (2014), (2) Alcalá et al. (2017), (3) Alecian et al. (2013), (4) Mortier et al. (2011), (5) Merín et al. (2008), (6) Cleeves et al. (2016), (7) Bustamante et al. (2015), (8) Comerón (2008).

(This table is available in its entirety in machine-readable form.)

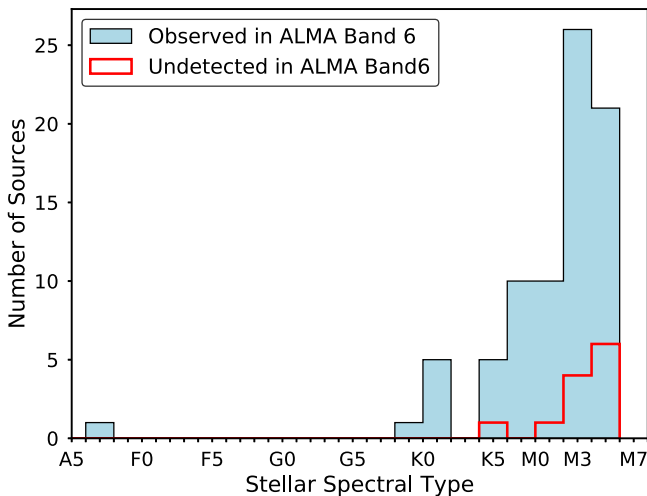


Figure 1. Distribution of sources in our Lupus sample with known stellar spectral types (Table 1). The blue histogram shows all sources, and the red histogram shows the subset of sources that is undetected in the 1.33 mm continuum by our ALMA Band 6 observations (Section 4.1).

observations of J1517-2422 and gain calibrations used observations of J1610-3958. We estimate an absolute flux calibration error of 10% based on variations in the flux calibrators.

Our ALMA Cycle 4 program (ID: 2016.1.01239.S; PI: van Terwisga) observed an additional seven sources in our sample (Sz 75, Sz 76, Sz 77, Sz 102, EX Lup, V1094 Sco, and J15560210-3655282) in Band 6 on 2017 July 7 (see also S. E. van Terwisga 2018, in preparation for descriptions of the ALMA Band 7 observations of these seven sources). The Band 6 array configuration used 44 12 m antennas on baselines of 2600–16700 m. The two continuum spectral windows were centered on 233.99 and 216.49 GHz with bandwidths of 2.00 GHz and 1.88 GHz, respectively, for a bandwidth-weighted mean continuum frequency of 225.52 GHz (1.33 mm). On-source integration times were 2.7 minutes for a median rms of 0.08 mJy beam⁻¹. The spectral setup included three windows covering the ¹²CO, ¹³CO, and C¹⁸O $J = 2-1$ transitions. These spectral windows were centered on 230.53, 220.39, and 219.55 GHz, respectively, with bandwidths of 0.12 GHz, channel

widths of 0.24 MHz, and velocity resolutions of 0.3 km s⁻¹. NRAO pipeline calibration included flux, bandpass, and gain calibrations using observations of J1427-4206, J1517-2422, and J1610-3958, respectively. We estimate an absolute flux calibration error of 10% based on variations in the flux calibrators.

The two remaining sources in our sample (Sz 82 and Sz 91) have Band 6 continuum observations as well as ¹²CO, ¹³CO, and C¹⁸O $J = 2-1$ line observations in the ALMA archive (ID: 2013.1.00226.S and 2013.1.01020.S). We downloaded the archival observations and ran the pipeline calibration scripts provided with the data. The observations of Sz 82 (IM Lup) are published in Cleeves et al. (2016).

Thus we obtain ALMA Band 6 data for all sources in our complete sample of Lupus protoplanetary disks.

4. ALMA Results

4.1. 1.33 mm Continuum Emission

We extract continuum images from the calibrated visibilities by averaging over the continuum channels and cleaning with a Briggs robust weighting parameter of +0.5; we use -1.0 when sources exhibit resolved structure (e.g., for transition disks). The average continuum beam size is 0.25 \times 0.24 arcsec (36 \times 38 au at 150 pc) for our Cycle 3 observations and 0.25 \times 0.21 arcsec (36 \times 32 au at 150 pc) for our Cycle 4 observations.

We primarily measure continuum flux densities by fitting elliptical Gaussians to the visibility data with *uvmodel*fit in CASA. The elliptical Gaussian model has six free parameters: integrated flux density (F_{cont}), FWHM along the major axis (a), aspect ratio of the axes (r), position angle (PA), R.A. offset from the phase center ($\Delta\alpha$), and decl. offset from the phase center ($\Delta\delta$). We scale the uncertainties on the fitted parameters by the square root of the reduced χ^2 value of the fit. If the ratio of a to its scaled uncertainty is less than five, a point-source model with three free parameters (F_{cont} , $\Delta\alpha$, $\Delta\delta$) is fit to the visibility data instead.

For disks with resolved structure, such as transition disks, flux densities are measured from continuum images using circular aperture photometry. The aperture radius for each source is determined by a curve-of-growth method, in which successively larger apertures are applied until the measured flux density levels off. Uncertainties are then estimated by taking

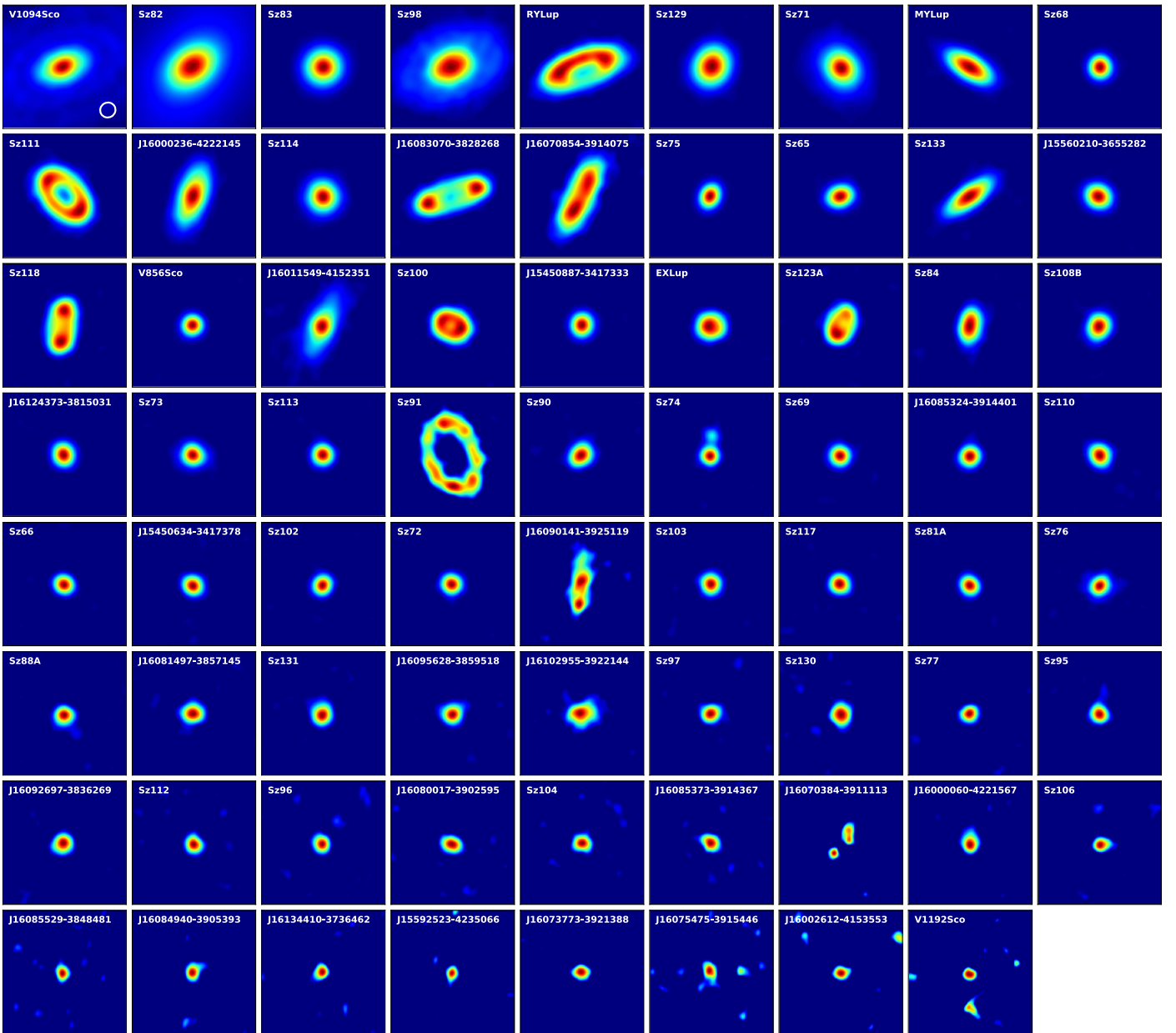


Figure 2. 1.33 mm continuum images of the 71 Lupus disks detected in our ALMA Band 6 sample, ordered by decreasing continuum flux density (as reported in Table 1). Images are $2'' \times 2''$, and the typical beam size is shown in the first panel. Each image is scaled so that the maximum is equal to the peak flux and the minimum is clipped at twice the image rms.

the standard deviation of the flux densities measured within a same-sized aperture placed randomly within the field of view, but away from the source.

Table 1 gives our measured 1.33 mm continuum flux densities and associated uncertainties. The uncertainties are statistical errors and do not include the 10% absolute flux calibration error (Section 3). Of the 95 sources, 71 are detected with $>3\sigma$ significance; the continuum images of these sources are shown in Figure 2. Table 1 provides the fitted source centers output by *uvmodelfit* for the detections, and the phase centers of our ALMA observations (based on 2MASS source positions) for the nondetections. The image rms for each source, derived from a $4''$ to $9''$ radius annulus centered on the fitted or expected source position for detections or nondetections, respectively, is also given in Table 1.

4.2. Line Emission

We extract ^{12}CO , ^{13}CO , and $\text{C}^{18}\text{O } J = 2-1$ channel maps from the calibrated visibilities by subtracting the continuum and cleaning with a Briggs robust weighting parameter of $+0.5$. Zero-moment maps are created by integrating over the velocity channels showing line emission above the noise. The appropriate velocity range is determined for each source by visual inspection of the channel map and spectrum. If no emission is visible, we sum across the average RV and its dispersion ($\overline{RV} = 2.8 \pm 4.2 \text{ km s}^{-1}$), as derived for Lupus protoplanetary disks in Frasca et al. (2017).

We measure ^{12}CO , ^{13}CO , and $\text{C}^{18}\text{O } J = 2-1$ integrated flux densities and associated uncertainties ($F_{12\text{CO}}$, $F_{13\text{CO}}$, and $F_{\text{C}^{18}\text{O}}$, respectively) from our ALMA zero-moment maps, using the same aperture photometry method described above

Table 2
Gas Properties

Source	$F_{13\text{CO}}$ (mJy km s ⁻¹)	$F_{\text{C}18\text{O}}$ (mJy km s ⁻¹)	$M_{\text{gas,mean}}$ (M_{Jup})	$M_{\text{gas,min}}$ (M_{Jup})	$M_{\text{gas,max}}$ (M_{Jup})
Sz65	<102	<60	<1.0
Sz66	<87	<60	<1.0
J15430131-3409153	<84	<51	<1.0
J15430227-3444059	<72	<60	<1.0
J15445789-3423392	<78	<54	<1.0
J15450634-3417378	<84	<57	<1.0
J15450887-3417333	395 ± 109	<54	0.4	...	3.1
Sz68	<120	<69	<1.0
Sz69	<81	<45	<1.0
Sz71	<78	<60	<1.0

Note. See Section 5.2.2 for details on the derivations of $M_{\text{gas,mean}}$, $M_{\text{gas,min}}$, and $M_{\text{gas,max}}$.

(This table is available in its entirety in machine-readable form.)

for structured continuum sources (Section 4.1). For nondetections, we take upper limits of three times the uncertainty when using an aperture of the same size as the typical beam ($0''.25$).

Of the 95 targets, 48 are detected in ^{12}CO , 20 in ^{13}CO , and 8 in C^{18}O with $>3\sigma$ significance. All sources detected in C^{18}O are also detected in ^{13}CO , all sources detected in ^{13}CO are also detected in ^{12}CO , and all sources detected in ^{12}CO are also detected in the 1.33 mm continuum. Table 2 gives our measured integrated flux densities or upper limits for ^{13}CO and C^{18}O . We do not provide integrated fluxes for ^{12}CO because cloud absorption is commonly seen in the spectra (see Figure 11 in Appendix A). Moreover, for 9 sources located nearby on the sky in Lupus III, cloud emission is also seen in the channel maps.

5. Properties of Lupus Disks

5.1. Disk Radii

Disk size is a fundamental property that has been difficult to measure for large samples because of observational constraints. Early measurements of disk radii from submm/mm observations focused on the largest and brightest disks, perhaps resulting in the common misconception that protoplanetary disks are typically hundreds of au in radius. The recent ALMA surveys of unbiased disk populations have revealed that typical disks are actually closer to a few tens of au in radius, at least in the submm/mm dust (Barenfeld et al. 2017; Tazzari et al. 2017).

Measuring *gas* disk sizes is particularly important because the gas dominates the dynamics of the disk. Gas disk radii are much more difficult to measure, however, because the line emission is faint, especially in the outer regions of the disk. Moreover, the submm/mm dust radius is *not* a reliable proxy for the gas disk size because dust grain growth has a radial dependence and growing dust grains decouple from the gas and drift inward, resulting in the smaller dust disks seen at submm/mm wavelengths (e.g., Andrews et al. 2012; de Gregorio-Monsalvo et al. 2013; Hogerheijde et al. 2016).

Here we use our ALMA Band 6 data to measure the dust and gas radii of 22 Lupus protoplanetary disks. This is the first large sample of dust and gas radii for disks within a single star-forming region. These disks are listed in Table 3 and are selected because they have clearly resolved continuum

Table 3
Disk Radii

Source	PA (degree)	i (degree)	R_{dust} (au)	R_{gas} (au)
Sz 65	108.6	61.5	64 ± 2	172 ± 24
Sz 68	175.8	-32.9	38 ± 2	68 ± 6
Sz 71	37.5	-40.8	94 ± 2	218 ± 54
Sz 73	94.7	49.8	56 ± 3	103 ± 9
Sz 75	169.0	60.2	56 ± 2	194 ± 21
Sz 76	65.0	-60.0	116 ± 9	164 ± 6
J15560210-3655282	55.6	53.5	56 ± 2	110 ± 3
Sz 82	144.0	-48.0	226 ± 4	388 ± 84
Sz 84	168.0	65.0	80 ± 3	146 ± 18
Sz 129	154.9	-31.7	68 ± 2	140 ± 12
RY Lup	109.0	68.0	134 ± 3	250 ± 63
J16000236-4222145	160.5	65.7	112 ± 3	266 ± 45
MY Lup	60.0	73.0	110 ± 3	194 ± 39
EX Lup	70.0	-30.5	62 ± 2	178 ± 12
Sz 133	126.3	78.5	142 ± 6	238 ± 66
Sz 91	17.4	51.7	154 ± 4	450 ± 80
Sz 98	111.6	-47.1	190 ± 4	358 ± 52
Sz 100	60.2	45.1	82 ± 2	178 ± 12
J16083070-3828268	107.0	-74.0	182 ± 4	394 ± 100
V1094 Sco	110.0	-55.4	334 ± 20	438 ± 112
Sz 111	40.0	-53.0	134 ± 2	462 ± 96
Sz 123A	145.0	-43.0	74 ± 2	146 ± 12

(This table is available in machine-readable form.)

emission (Tazzari et al. 2017) and exhibit unambiguous ^{12}CO line emission in multiple velocity channels without significant cloud contamination.

The dust radii (R_{dust}) are measured from the 1.33 mm continuum images using a curve-of-growth method, in which successively larger photometric apertures are applied until the measured flux is 90% of the total flux. We use elliptical apertures based on the position angle (PA; measured east of north) and inclination (i) of the source; these values are mostly taken from Tazzari et al. (2017), who derived these parameters using two-layer disk models of the Band 7 continuum visibilities for the full Lupus disks in our sample. For the resolved transition disks with large inner dust cavities (Section 5.4.1), we use the PA and i values from van der

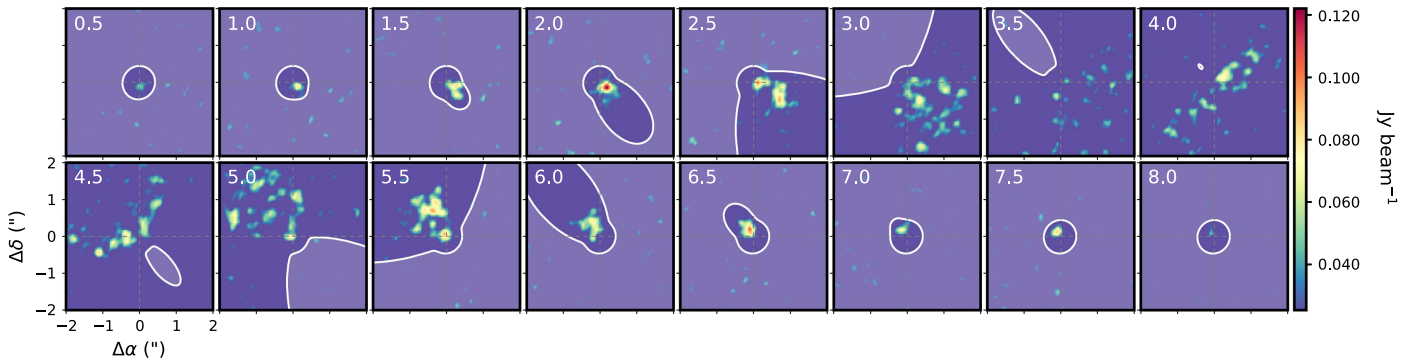


Figure 3. Keplerian masking applied to the channel maps of Sz 111 (Section 5.1). In each channel map, only the image regions with expected gas emission from a disk in Keplerian rotation are considered (i.e., the shaded regions are masked out when making the zero-moment map shown in Figure 4). The velocities in km s^{-1} are given in the top left corner of each channel.

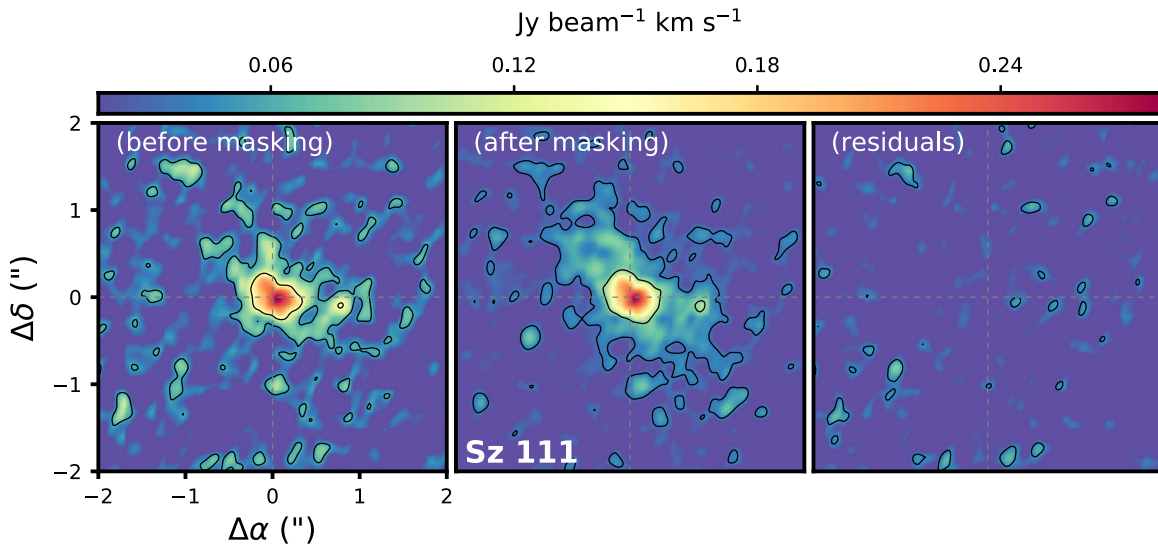


Figure 4. Zero-moment map of Sz 111 before (left) and after (middle) Keplerian masking as well as the residuals (right). The black lines are 2σ and 5σ contours, illustrating the improvement in S/N in the fainter outer disk regions (see Section 5.1). Figure 13 in Appendix B shows these comparison plots for all Lupus disks with measured R_{gas} .

Marel et al. (2018), who derived these parameters from by-eye comparisons of the Band 7 first-moment ^{13}CO maps to model Keplerian velocity fields. The resulting R_{dust} values are given in Table 3 in units of au. The errors on R_{dust} are calculated by taking the range of radii within the uncertainties on the 90% flux measurement. Comparing our R_{dust} values to the R_{out} values derived in Tazzari et al. (2017) for the 12 sources common to both samples shows good agreement despite the very different analysis methods: the average ratio is 1.06, with a standard deviation of 0.37.

The gas radii (R_{gas}) are measured from the ^{12}CO zero-moment maps using the same curve-of-growth method described above for the R_{dust} measurements (we note that this method is robust against the effects of cloud absorption only affects the blue- or redshifted side of the disk emission). The same PA and i values used for measuring R_{dust} are used again for measuring R_{gas} , which is important because applying different i values can lead to significantly different radii when implementing elliptical apertures in a curve-of-growth analysis.

Before measuring R_{gas} , we also reconstruct the zero-moment maps using a Keplerian masking technique to increase the

signal-to-noise ratio (S/N), especially in the fainter outer disk regions (see the Appendixes in Salinas et al. 2017 and L. Trapman et al. 2018, in preparation, for detailed descriptions of the Keplerian masking technique). In short, Keplerian masking takes advantage of the fact that the gas disk is in Keplerian rotation, and thus will only emit in certain regions of the sky in a given velocity channel. Masking the pixels outside of these regions in each velocity channel therefore enhances the S/N in the final integrated zero-moment map. We show the Keplerian masking technique applied to Sz 111 in Figure 3, and also the improvement in the S/N in the outer disk regions in Figure 4 (plots for all 22 disks are shown in Figure 14 in Appendix B). The resulting R_{gas} values are given in Table 3.

We find that the gas disks are universally larger than the dust disks, by an average factor of 1.96 ± 0.04 (where this is the mean and standard error on the mean). We note that this result holds even when using a 68% (rather than 90%) flux threshold for the radius measurements and also when using circular (rather than elliptical) apertures (see Figures 12 and 13 in Appendix B). Although previous observations of large individual disks have

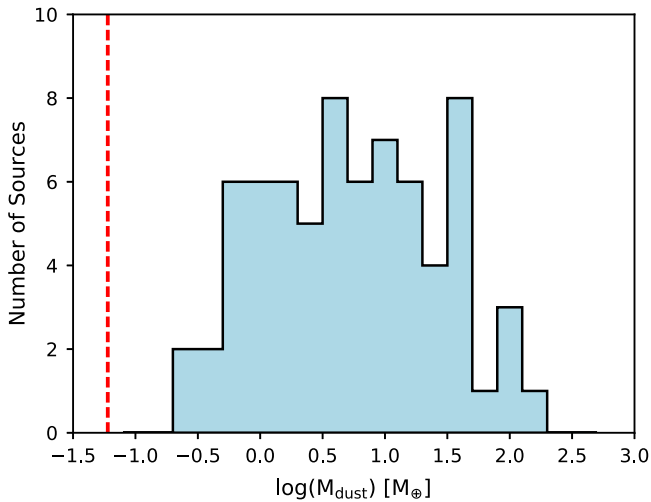


Figure 5. Distribution of dust masses (M_{dust}) for the Lupus disks detected in the 1.33 mm continuum (Section 5.2.1). The dashed red line shows the 3σ upper limit from the stacked continuum nondetections (Section 5.3); the stark contrast to the faintest continuum detection suggests that protoplanetary disks evolve rapidly to debris disk levels once clearing begins.

shown gas disks extending beyond dust disks by similar factors (e.g., Isella et al. 2007; Panić et al. 2009; Andrews et al. 2012; de Gregorio-Monsalvo et al. 2013; Cleeves et al. 2016), this is the first indication of systematically larger gas radii in a coherent population of disks. We note that our results differ from those of Barenfeld et al. (2017), who found in a sample of seven Upper Sco disks only four with larger gas radii, and no clear overall trend (see their Figure 6); however, their sample is much smaller and they did not apply Keplerian masking. We discuss the implications in Section 6.2.

5.2. Disk Masses

5.2.1. Dust Masses

Dust emission at submm/mm wavelengths is typically optically thin in most regions of a protoplanetary disk, in which case estimates of dust mass can be directly obtained from measurements of the submm/mm continuum flux. Ribas et al. (2017) calculated the spectral index from far-IR to mm wavelengths for 284 protoplanetary disks, showing that the spectral index distributions become remarkably similar from $880 \mu\text{m}$ to 5 mm, despite the significant range in wavelength, which indeed suggests that the overall disk dust emission is generally optically thin at these longer wavelengths.

Assuming dust emission at submm/mm wavelengths is also isothermal, the submm/mm continuum flux from a protoplanetary disk at a given wavelength (F_ν) can be directly related to the mass of the emitting dust (M_{dust}), as shown in Hildebrand (1983):

$$M_{\text{dust}} = \frac{F_\nu d^2}{\kappa_\nu B_\nu(T_{\text{dust}})} \approx 7.06 \times 10^{-7} \left(\frac{d}{150} \right)^2 F_{1.33 \text{ mm}}, \quad (1)$$

where $B_\nu(T_{\text{dust}})$ is the Planck function for a characteristic dust temperature of $T_{\text{dust}} = 20 \text{ K}$, the median for Taurus disks (Andrews & Williams 2005). We take the dust grain opacity, κ_ν , as $10 \text{ cm}^2 \text{ g}^{-1}$ at 1000 GHz and use an opacity power-law index of $\beta_d = 1.0$ (Beckwith et al. 1990). Distances, 1.33 mm

continuum flux densities, and associate uncertainties are from Table 1. The calculated M_{dust} values are given in Table 1, and the M_{dust} distribution is shown in Figure 5. The median fractional difference between the dust masses derived here from our Band 6 data compared to the values derived in Paper I from our Band 7 data is 15%.

As in previous works (e.g., Andrews et al. 2013; Ansdell et al. 2016, 2017; Barenfeld et al. 2016; Pascucci et al. 2016), we also fit the $M_{\text{dust}}-M_\star$ relation using the Bayesian linear regression method of Kelly (2007) to take into account upper limits, error bars on both axes, and intrinsic scatter in the data. Using the same Monte Carlo method as in Paper I to account for the 19 sources with unknown stellar masses (Section 2), we find the relation:

$$\log(M_{\text{dust}}) = 1.3(\pm 0.2) + 1.8(\pm 0.3) \times \log(M_\star), \quad (2)$$

with a dispersion of 0.8 ± 0.2 dex. These fitted parameters are nearly identical to (and well within the errors of) those derived from our Band 7 observations in Paper I. We note that our assumption of an isothermal disk temperature could effect the fitted $M_{\text{dust}}-M_\star$ relation, if there is a dependence of T_{dust} on stellar parameters. Although Andrews et al. (2013) derived the relation $T_{\text{dust}} = 25 \text{ K} \times (L_\star/L_\odot)^{0.25}$ using two-dimensional continuum radiative transfer models, recent ALMA observations suggest that T_{dust} is actually largely independent of stellar parameters. In particular, Tazzari et al. (2017) used detailed modeling of 36 resolved Lupus disks to show a lack of correlation between T_{dust} and L_\star or M_\star , at least for their sample. Thus applying model-derived relations runs the risk of introducing artificial correlations or increasing the dispersion of true correlations. Indeed, applying the $T_{\text{dust}}-L_\star$ relation derived by Andrews et al. (2013) to ALMA disk surveys results in a shallower slope when compared to assuming an isothermal disk temperature of $T = 20 \text{ K}$ (Pascucci et al. 2016).

5.2.2. Gas Masses

We estimate bulk gas masses using our CO isotopologue line observations, following the methods of Williams & Best (2014) and Ansdell et al. (2016). In short, Williams & Best (2014) used parameterized gas disk models to show that combining the ^{13}CO and C^{18}O isotopologue lines, with their moderate-to-low optical depths, provides a relatively simple and robust proxy of bulk gas content in protoplanetary disks, except for exceptionally cold or low-mass disks (Miotello et al. 2016). In Paper I we applied this method to protoplanetary disks in Lupus by comparing our Band 7 observations of the ^{13}CO and C^{18}O $J = 3-2$ line luminosities to the WB14 model grids. We considered both the ISM C^{18}O isotopologue abundance and a factor of $3\times$ lower in order to take into account CO isotope-selective photodissociation (van Dishoeck & Black 1988), which affects CO-derived gas masses (Miotello et al. 2016, 2017).

Here we apply the same method to derive bulk gas masses using our Band 6 observations of the ^{13}CO and C^{18}O $J = 2-1$ line luminosities. Our derived gas masses are given in Table 2. For the 8 sources detected in both ^{13}CO and C^{18}O , we calculate the mean (in log space) of the WB14 model grid points within $\pm 3\sigma$ of our measured ^{13}CO and C^{18}O line luminosities (M_{gas}), and also set upper ($M_{\text{gas,max}}$) and lower ($M_{\text{gas,min}}$) limits

based on the maximum and minimum WB14 model grid points consistent with the data. For the 12 disks with ^{13}CO detections and C^{18}O upper limits, we similarly calculate M_{gas} and $M_{\text{gas,max}}$ but set $M_{\text{gas,min}}$ to zero as isotope-selective photodissociation may be stronger for low-mass disks (Miotello et al. 2016). For the 75 disks undetected in both lines, we set only upper limits to the gas masses using the maximum model grid points consistent with the ^{13}CO and C^{18}O line luminosity upper limits. We note that the Williams & Best (2014) model grid only explores radii from 30 to 200 au, thus these gas nondetections may be due to small gas disks; however, assuming purely optically thick emission and a minimum CO temperature of 20 K, we estimate that our observations should have been able to detect all disks greater than ~ 30 au in diameter, comparable to our beam size.

Within the uncertainties, the M_{gas} values derived in this work from our Band 6 ($J = 2-1$) data are consistent with those derived from our Band 7 ($J = 3-2$) data in Paper I for the sources detected in ^{13}CO and C^{18}O in both surveys. However, the uncertainties are large and the sample is small (only five sources, three of which are transition disks with resolved dust cavities). Moreover, the M_{gas} values derived from the Band 6 data are systematically higher by $\sim 0.3-0.5$ dex than those derived from the Band 7 data. For these sources, $M_{\text{gas}} \geq 10^{-3} M_{\odot}$, thus they are unlikely to be affected by isotope-selective photodissociation (see Figure 7 in Miotello et al. 2016).

5.3. Stacked Analysis

We perform a stacking analysis to constrain the average dust and gas masses of the individually undetected sources. Before stacking the nondetections, we center each image on the expected source location and normalize the flux to 150 pc. The flux densities are then measured in the stacked images using circular aperture photometry, as in Section 4.1. We confirm that the source locations are known to sufficient accuracy for stacking by measuring the average offset of the detected sources from their phase centers: we find $\langle \Delta\alpha \rangle = -0''.11$ and $\langle \Delta\delta \rangle = -0''.18$, both smaller than the beam size.

We first stack the 24 continuum nondetections, but do not find a significant mean signal in the continuum, ^{12}CO , ^{13}CO , or C^{18}O stacks. The lack of line emission is expected given the undetected continuum, but the absence of continuum emission is surprising given the sensitivity of the stacked image. Using an aperture the same size as the beam, we measure a mean signal of 0.00 ± 0.04 mJy; we can confirm this by calculating the mean and standard error on the mean from the continuum fluxes reported in Table 1, which similarly gives -0.06 ± 0.03 mJy. This translates into a 3σ upper limit on the average dust mass of individually undetected continuum sources of ~ 5 lunar masses ($0.06 M_{\oplus}$), comparable to debris disk levels (Wyatt 2008). The stark contrast between the detections and stacked nondetections, illustrated in Figure 5, suggests that protoplanetary disks evolve rapidly to debris disk levels once disk clearing begins (Alexander et al. 2014).

We then stack the 12 sources detected in the continuum and ^{13}CO , but not C^{18}O . We measure a continuum mean signal of 42.10 ± 0.64 mJy and a ^{13}CO mean signal of 1030 ± 150 mJy km s^{-1} . The stacking also reveals a marginally significant mean signal for C^{18}O of 270 ± 90 mJy km s^{-1} . The stacked continuum flux corresponds to $M_{\text{dust}} \sim 28 M_{\oplus}$ and the stacked line fluxes correspond to $M_{\text{gas}} \sim 0.36 M_{\text{Jup}}$, giving an

average gas-to-dust ratio of only ~ 4 for sources detected in the continuum and ^{13}CO , but not C^{18}O .

Finally, we stack the 51 sources detected in the continuum, but undetected in ^{13}CO and C^{18}O . We measure a continuum mean signal of 19.06 ± 0.12 mJy. The stacking also reveals marginally significant mean signals for ^{13}CO and C^{18}O ; the stacked gas fluxes are 190 ± 50 mJy km s^{-1} and 40 ± 10 mJy km s^{-1} , respectively. Note that these stacked line fluxes of the nondetections are significantly lower than the line fluxes of the detections, similar to what is seen for the continuum. The stacked continuum flux corresponds to $M_{\text{dust}} \sim 13 M_{\oplus}$, while the stacked line fluxes correspond to $M_{\text{gas}} \sim 0.14 M_{\text{Jup}}$ for an average gas-to-dust ratio of just ~ 3 for disks detected in the continuum but undetected in ^{13}CO and C^{18}O .

5.4. Individual Sources

5.4.1. Transition Disks and Asymmetric Disks

van der Marel et al. (2018) identified 11 transition disks with large (>20 au) inner dust cavities in our Band 7 survey from Paper I. At the spatial resolution of these observations ($\sim 0''.35$), half of the transition disks have cavities that are clearly resolved in their Band 7 continuum images, while the other half are only marginally resolved and primarily identified through the nulls in their Band 7 continuum visibility curves. The higher-resolution ($\sim 0''.25$) Band 6 data presented in this work now clearly resolve all of these cavities in the continuum image plane. Furthermore, with the higher continuum sensitivity of our Band 6 data, two additional disks (J16090141-3925119 and J16070384-3911113) now show evidence for dust cavities with radii of ~ 30 au in their Band 6 data; neither of these disks have been previously identified in the literature as transition disk candidates by their spectral energy distribution (SED) shapes. In this work, we refer to these 13 disks as “resolved” transition disks. The “unresolved” transition disks in our sample are those identified by their SEDs, but without resolved dust cavities in current submm/mm continuum data.

Another interesting aspect of some resolved transition disks is the appearance of azimuthal asymmetries when observed at high spatial resolution: both RY Lup and Sz 123A appear to be azimuthally asymmetric, with contrasts of 2.2 and 1.2, respectively. Extreme azimuthal asymmetries have been observed in several other resolved transition disks, usually linked to dust trapping in vortices (e.g., van der Marel et al. 2013; Casassus et al. 2015; Kraus et al. 2017), whereas shallower asymmetries with contrasts of $<2-3$ (e.g., Pérez et al. 2014; Pinilla et al. 2015) have been explained by other mechanisms (e.g., eccentricity; Ataiee et al. 2013).

5.4.2. Secondary Sources

We detect seven secondary sources that are not accounted for in our target list. The coordinates and 1.33 mm fluxes (F_{cont}) of these secondary sources are given in Table 4. Additionally, we provide the position angle (PA; measured east of north) and projected angular separation (ρ) of each secondary source relative to its primary source. The F_{cont} values are estimated by fitting point-source models to the visibility data with *uvmodelfit*, as in Section 4.1, and are consistent with values obtained with aperture photometry. We do not provide F_{cont} values for the secondary sources to Sz 74 and Sz 88A, as they

Table 4
Secondary Source Properties

Source (primary)	R.A. _{J2000} (secondary)	Decl. _{J2000} (secondary)	F_{cont} (mJy) (secondary)	F_{cont} (mJy) (primary)	PA (degree)	ρ (arcsec)
Sz 68	15:45:12.646	-34:17:29.768	3.35 ± 0.10	66.38 ± 0.20	297.32	2.84
Sz 74	15:48:05.212	-35:15:53.032	...	11.51 ± 0.34	355.96	0.31
Sz 81A	15:55:50.317	-38:01:32.262	1.45 ± 0.10	4.24 ± 0.11	18.61	1.93
J16070384-3911113	16:07:03.585	-39:11:12.022	0.38 ± 0.10	0.98 ± 0.29	267.54	2.84
Sz 88A	16:07:00.567	-39:02:20.202	...	3.72 ± 0.11	212.61	0.34
J16073773-3921388	16:07:37.562	-39:21:39.218	0.45 ± 0.10	0.52 ± 0.09	266.61	1.72
V856 Sco	16:08:34.390	-39:06:19.310	8.21 ± 0.10	23.03 ± 0.11	112.68	1.45

(This table is available in machine-readable form.)

are too close to their primary source to allow reliable individual flux measurements.

Sz 68, Sz 74, Sz 81A, and V856 Sco are known binary stars from the literature (Reipurth & Zinnecker 1993; Leinert et al. 1997; Woitas et al. 2001), and here we detect the disks of their secondary companions. The PA and ρ values measured from our millimeter detections match those reported in the literature for the stellar binary systems.

Sz 88A shows a very close ($0''.38$) secondary millimeter component, which is not immediately visible in Figure 2 due to the relative brightness of the primary target. Although this star has a known companion at $1''.5$ (Sz 88B; Reipurth & Zinnecker 1993), which we do not detect in our data, follow-up with VLT/NACO did not reveal any closer companions (Correia et al. 2006) that could be the possible host star for this potential disk.

J16070384-3911113 shows a weak companion at a projected separation of $2''.85$, but no known stellar sources near this location are reported in the literature. Although this source also appears to be a close binary in our Band 6 data (see Figure 2), the two millimeter continuum points are likely just the bright limbs of an edge-on disk. This interpretation is supported by its publicly available optical image taken by the Advanced Camera for Surveys on board the *Hubble Space Telescope* (*Hubble*/ACS; Proposal ID: 14212; PI: Stapelfeldt), which reveals a flared edge-on disk with a mid-plane that is aligned with the two millimeter continuum points, as shown in Figure 6. Additionally, the detected ^{12}CO emission in our Band 6 data and ^{13}CO emission in our Band 7 data both show Keplerian rotation encompassing the two continuum points. The edge-on nature of the disk also explains its apparently flat IR excess.

J16073773-3921388 has a visual companion detected in the optical at $3''.2$ to the north (Merín et al. 2008). However, the submm/mm component we detect is at $1''.76$ to the west, making it unlikely to be the same object (if bound), given the time elapsed between the observations.

5.4.3. Outflow Sources

Two disks in our survey, Sz 83 and J15450634-3417378, exhibit unusual structures in ^{12}CO emission that may indicate a wide-angle outflow or remnant thereof. Namely, their channel maps show off-center rings toward each source (see Figures 15 and 16 in Appendix C), and the coherence in position and velocity shows that these are related to the YSO and are not cloud confusion. Sz 83 is the famous source RU Lup, one of

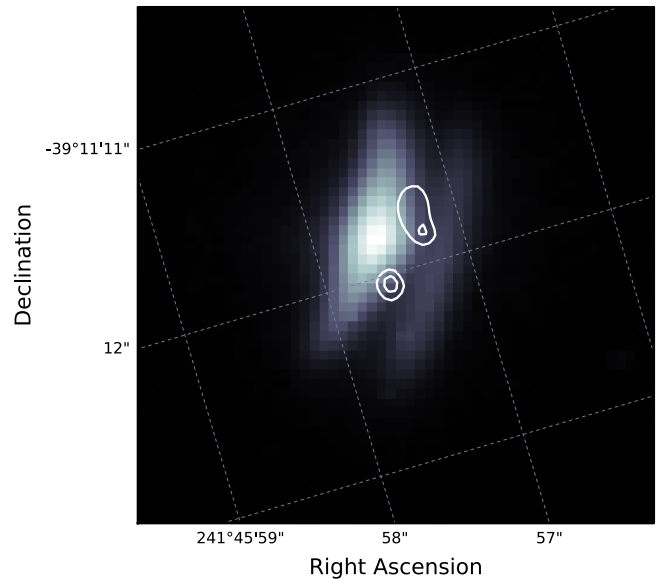


Figure 6. *Hubble*/ACS image (PI: Stapelfeldt) of J16070384-3911113, revealing an edge-on flared disk. The white lines are 3σ and 4σ contours of the ALMA 1.33 mm continuum emission, which align with the disk mid-plane. This suggests that the two millimeter points are the bright edges of an edge-on disk, which is possibly a transition disk (Section 5.4.1).

the most active T Tauri stars in Lupus with known outflows and jets (e.g., Herczeg et al. 2005). J15450634-3417378 is less well known, detected previously at submm/mm continuum wavelengths but lacking any previous evidence of outflows.

The nature of these features is not known. Interestingly, both are slightly offset from the systemic velocity of the disk. One possibility is that they are slow-moving flows from the outer regions of the disk. Such disk winds, magnetically launched from several au radii, have been theorized in nonideal MHD models (Gressel et al. 2015), including even one-sided flows (Bai 2017), and have been observed in recent ALMA observations (Bjerkeli et al. 2016; Hirota et al. 2017). An alternative possibility is that the flows are remnants of eruptive FUOr-like events, in which similarly large-scale, slow-moving arc-like structures are found (Ruíz-Rodríguez et al. 2017a, 2017b; Zurlo et al. 2017; Principe et al. 2018).

One other source, J15430131-3409153, also shows extended ^{12}CO emission in its channel maps that appears to be aligned with the position of the YSO, which we do *not* detect in the 1.33 mm continuum (see Figure 17 in Appendix C). However,

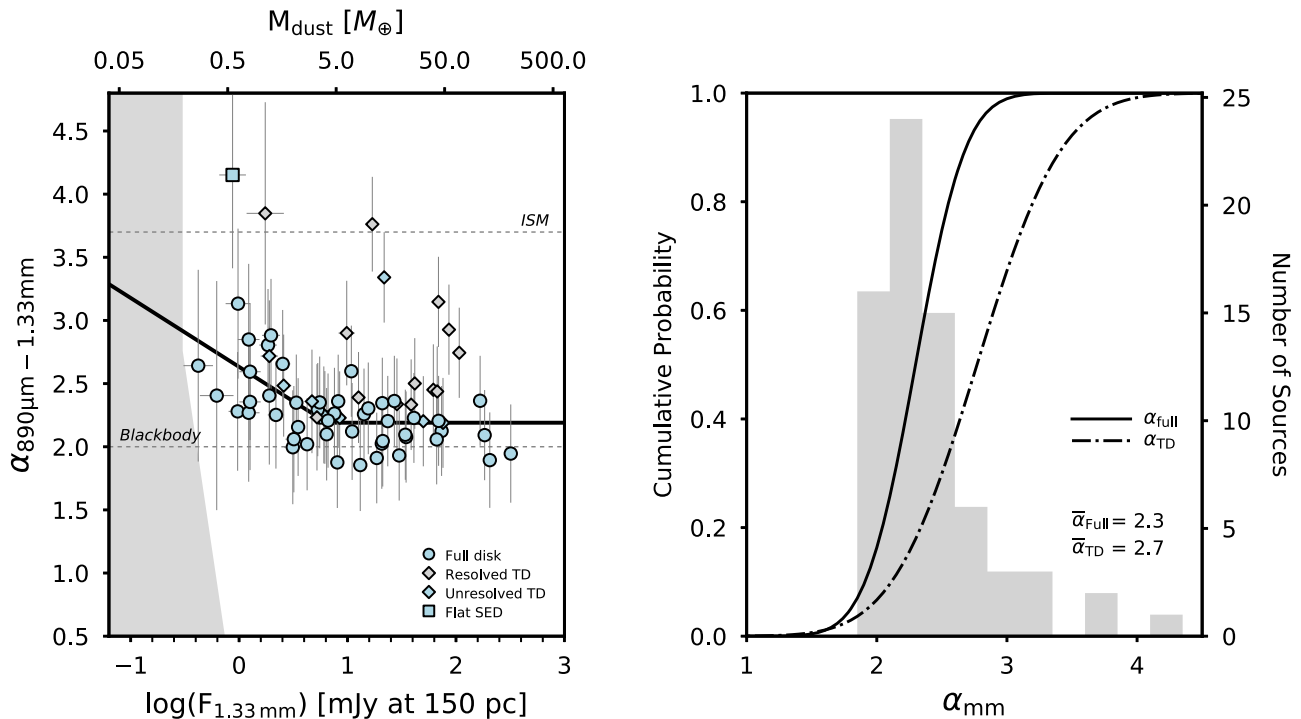


Figure 7. Left: millimeter spectral index (α_{mm}) vs. 1.33 mm millimeter flux ($F_{1.33 \text{ mm}}$) for Lupus disks, where α_{mm} is calculated between 890 μm (Band 7) and 1.33 mm (Band 6), and $F_{1.33 \text{ mm}}$ is normalized to 150 pc (Section 6.1). Blue circles are full disks, blue squares are sources with flat IR excess, and blue diamonds are unresolved transition disks; gray diamonds are transition disks with resolved cavities (Section 5.4.1). The black line gives a piecewise linear fit to the full disks (see Equation 3). The shaded region shows where we are not sensitive based on 3σ upper limits, illustrating that our results are not due to observational biases. Dashed lines show α_{mm} values for the ISM and pure blackbody emission. The top axis gives approximate dust masses (M_{dust}) based on Equation (1). Right: cumulative distributions of α_{mm} values for different subsets of the Lupus disk population, overlaid on a histogram of all α_{mm} values. The solid and dash-dotted lines show full disks and transition disks, respectively.

the ^{12}CO emission is actually associated with the nearby outflow source IRAS 15398-3359 (e.g., Jørgensen et al. 2013), which is located at the outer edges of the field of view of J15430131-3409153.

6. Discussion

6.1. Dust Grain Growth

One of the largest uncertainties in converting submm/mm continuum flux into disk dust mass (e.g., Equation (1)) is the power-law index of the dust opacity spectrum, β_{d} , where $\kappa_{\nu} \propto \nu^{\beta_{\text{d}}}$. If the disk dust emission is optically thin and in the Rayleigh-Jeans regime, its submm/mm SED has a power-law dependence on frequency, such that $F_{\nu} \propto \kappa_{\nu} \nu^2 \propto \nu^{2+\beta_{\text{d}}}$. In this case, we can fit the observed submm/mm SED between two frequencies with $F_{\nu_1}/F_{\nu_2} = (\nu_1/\nu_2)^{\alpha_{\text{mm}}}$, where α_{mm} is the submm/mm spectral index, and then derive the dust opacity index using $\beta_{\text{d}} = \alpha_{\text{mm}} - 2$. For interstellar medium (ISM) dust, $\beta_{\text{d}} \approx 1.7$ (Li & Draine 2001), a value that should decrease (i.e., become more gray) as grains grow (e.g., Draine 2006).

Here we derive α_{mm} between 890 μm and 1.33 mm for the 70 Lupus disks detected in both Band 6 (this work) and Band 7 (Paper I; S. E. van Terwisga et al. 2018, in preparation). We use the standard equation for deriving α_{mm} described above, and calculate uncertainties by propagating the errors on the flux measurements, which include both the statistical error and the 10% flux calibration uncertainty (Section 3). Our results are given in Figure 7, which shows

α_{mm} as a function $F_{1.33 \text{ mm}}$ (normalized to 150 pc) as well as the cumulative distributions of the α_{mm} values. The median α_{mm} value is 2.25 (when excluding transition disks with resolved cavities; see below), similar to what is seen in other young regions at these wavelengths (Ribas et al. 2017) and also at slightly longer wavelengths of 1–3 mm (Testi et al. 2014). Moreover, these α_{mm} values translate into β_{d} values much lower than that of the ISM, implying significant grain growth in Lupus disks.

We note that for blackbody emission, $F_{\nu} \propto \nu^2$, thus $\alpha_{\text{mm}} > 2$ is the limit for optically thin, graybody emission in the Rayleigh-Jeans regime. However, disks may exhibit $\alpha_{\text{mm}} < 2$ when they deviate from these conditions, for example, in the case of exceptionally cold disks that no longer fulfill the Rayleigh-Jeans criteria, or when there is significant contamination from nonthermal sources such as stellar winds. Nonetheless, all of our Lupus sources in Figure 7 are consistent with $\alpha_{\text{mm}} > 2.0$ when considering uncertainties, as expected from graybody emission in the Rayleigh-Jeans regime.

Figure 7 also shows α_{mm} as a function of M_{dust} (translated from $F_{1.33 \text{ mm}}$ using Equation (1)). Contrary to previous studies of young disks that found no correlation between α_{mm} and M_{dust} (e.g., Andrews & Williams 2005; Ricci et al. 2012), we find with our much more sensitive observations that low-mass disks follow an anti-correlation, followed by a flattening after $M_{\text{dust}} \sim 5M_{\oplus}$ as disks approach $\alpha_{\text{mm}} \approx 2$. When considering only the full disks (see below), we fit the data with a piecewise

linear relation:

$$\alpha_{\text{mm}} = \begin{cases} -0.55(\pm 0.17)\log F_{\text{mm}} + 2.62(\pm 0.09) & \log F_{\text{mm}} \leq 0.81 \\ +2.19(\pm 0.05) & \log F_{\text{mm}} > 0.81. \end{cases} \quad (3)$$

To test the significance of the anticorrelation, we apply a Spearman rank test to the data where $F_{1.33\text{ mm}} \leq 0.84$, which gives a probability of no correlation of $p = 0.002$. We note that using a simple linear relation also gives a statistically significant fit to the data, although an F-test is unable to identify which parametrization is more statistically significant. Regardless, this anticorrelation is not an observational bias: the gray regions in Figure 7 show where we are not sensitive based on 3σ limits, illustrating that our observational sensitivity does not influence the correlation.

The decrease in α_{mm} for brighter disks may be due to more efficient grain growth in higher-mass disks, which also tend to be around higher-mass stars (due to the $M_{\text{dust}}-M_{\star}$ relation; Section 5.2.1) and thus have faster dynamical timescales. If true, this rules out one of the scenarios proposed by Pascucci et al. (2016) to explain the steepening of the $M_{\text{dust}}-M_{\star}$ relation with age, which is that grain growth is more efficient in disks around lower-mass stars. However, the decrease in α_{mm} for higher-mass disks may also simply reflect larger optically thick regions, which would serve to artificially decrease α_{mm} and thus mimic grain growth (e.g., Tripathi et al. 2017; S. E. van Terwisga et al. 2018, in preparation). Higher resolution data that can resolve α_{mm} as a function of radius are needed to distinguish between these scenarios.

Figure 7 shows that resolved transition disks tend to have higher α_{mm} values than the general protoplanetary disk population in Lupus. This is consistent with the findings of Pinilla et al. (2014), who showed that α_{mm} (between ~ 1 mm and ~ 3 mm; see their Table 2) is larger for transition disks than for full protoplanetary disks in the Taurus, Ophiuchus, and Orion star-forming regions. They calculated a weighted mean and standard error on the mean of $\bar{\alpha}_{\text{TD}} = 2.70 \pm 0.13$ and $\bar{\alpha}_{\text{PPD}} = 2.20 \pm 0.07$. Here our wavelength range is smaller ($890\ \mu\text{m}-1.33$ mm), but our disk population is from a single star-forming region and our observations are from uniform surveys at higher sensitivity. We find consistent results with $\bar{\alpha}_{\text{TD}} = 2.70 \pm 0.10$ and $\bar{\alpha}_{\text{PPD}} = 2.27 \pm 0.05$. Pinilla et al. (2014) explained the higher α_{mm} values of transition disks in terms of the inner disk cavity. Namely, assuming transition disks had the same grain population as full disks before the inner disk clearing, and also that β_{d} increases with radius (e.g., Guilloteau et al. 2011; Tazzari et al. 2016), then disks with large inner cavities should lack large grains and therefore appear to have higher α_{mm} values than full disks.

6.2. Dust Radial Drift?

Figure 8 compares the gas radius (R_{gas}) to the dust radius (R_{dust}) for the 22 disks in our Lupus sample with constraints on both parameters, revealing that R_{gas} is universally larger than R_{dust} . Although previous observations of individual disks have shown that the gas radius can extend beyond the dust radius, these were limited to the largest and brightest disks (e.g., TW Hya and HD 163296; Panić et al. 2009; Andrews et al. 2012; de Gregorio-Monsalvo et al. 2013). Here we show that this

is a population-wide feature among young disks, and that R_{gas} is consistently $\approx 1.5-3.0 \times R_{\text{dust}}$, with an average ratio of $R_{\text{gas}}/R_{\text{dust}} = 1.96 \pm 0.04$ (Section 5.1).

The smaller dust disk sizes relative to the gas disks may be explained by dust grain growth and radial drift. Grain growth timescales are much shorter at smaller radial distances from the host star, resulting in grain size segregation with the larger grains preferentially located closer to the host star. In addition, as dust grains grow, drag forces from gas in sub-Keplerian rotation cause the larger solids to spiral inward toward the host star on short timescales (Weidenschilling 1977). Both of these mechanisms can cause the submm/mm continuum emission to appear smaller than the gas emission, because this continuum emission primarily traces larger (submm/mm) grains, while the gas emission primarily traces smaller (sub- μm) grains. Moreover, because dust growth and radial drift both produce similar particle size segregations in disks, it can be difficult to identify an unambiguous signature of radial drift (distinct from just grain growth) based on disk sizes alone.

However, numerical and analytical models also predict that a unique signature of radial drift is the *shape* of the submm/mm continuum intensity profile (e.g., Birnstiel & Andrews 2014). This is because radial drift in the early phases of disk evolution, before grain growth in the outer disk has begun, naturally sets a distinct outer radius beyond which the disk is essentially devoid of dust; moreover, this sharp outer radius is preserved for submm/mm grains in later phases of disk evolution, when grain growth and viscous spreading have set in. This reasoning has been used to invoke radial drift to explain the differences in the submm/mm dust and gas radii for TW Hya (Andrews et al. 2012; Hogerheijde et al. 2016) and HD 163296 (de Gregorio-Monsalvo et al. 2013). The resolution of our data is insufficient to derive detailed continuum intensity profiles capable of fitting sharp outer edges, although higher-resolution ALMA observations of Lupus disks will be able to test for this signature of radial drift in the future. Nevertheless, radial drift is expected to come hand-in-hand with dust growth, as described above.

An alternative explanation for the larger gas disk radii is that the ^{12}CO emission is optically thick, while the continuum emission is optically thin (Dutrey et al. 1998; Guilloteau & Dutrey 1998). Because the ^{12}CO emission is optically thick, it is simply easier to detect small amounts of gas at large radii, whereas this is not the case for the optically thin emission from the dust. These optical depth effects can therefore produce similar observational signatures to dust grain growth and radial drift. Indeed, Facchini et al. (2017) combined the dust evolution models from Birnstiel et al. (2015) with the thermo-chemical code DALI (Bruderer et al. 2012; Bruderer 2013) to show that, at least for the case of the massive HD 163296 disk, the bulk of the difference between the gas and dust radii is due to the optical depth of the CO lines, with grain growth and radial drift having a more subtle effect on the steepness of the millimeter dust emission profile (see their Figures 16 and 17).

To simulate more “typical” Lupus disks, we update the Facchini et al. (2017) models using $M_{\star} = 0.5 M_{\odot}$, $T_{\star} = 4700$ K, $\dot{M}_{\text{acc}} = 10^{-9} M_{\odot} \text{ yr}^{-1}$, $M_{\text{disk}} = 10^{-4} M_{\odot}$, and a tapered surface density profile with $\gamma = 1$ and $R_{\text{c}} = 50$ au. The simulated images are then convolved with a $0''.25$ beam, and we use a distance of 150 pc. To test whether the disk size

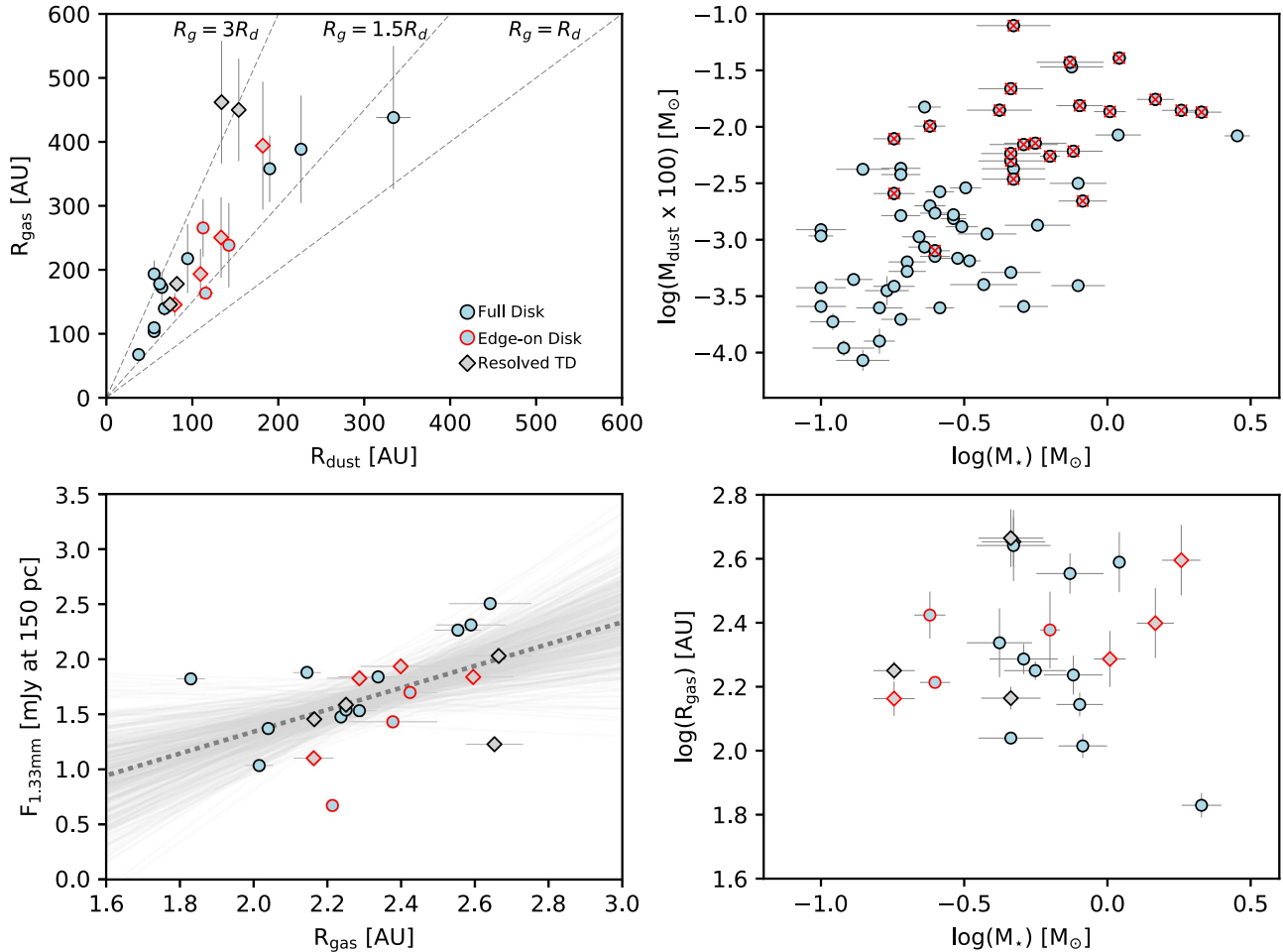


Figure 8. Top left: gas disk radii (R_{gas}) compared to dust disk radii (R_{dust}) for Lupus disks with constraints on both parameters: R_{gas} is universally larger than R_{dust} with an average ratio of $R_{\text{gas}}/R_{\text{dust}} = 1.96 \pm 0.04$ (Section 5.1). Edge-on disks ($|i| \geq 65^\circ$) are outlined in red, and transition disks (Section 5.4.1) are indicated by diamonds. Top right: $M_{\text{dust}}-M_*$ correlation seen for Lupus disks (Paper I); the subsample with R_{gas} measurements are highlighted by red crosses, illustrating the bias toward high-mass disks around high-mass stars. Bottom left: tentative correlation between R_{gas} and $F_{1.33 \text{ mm}}$ (and thus disk mass), similar to the $R_{\text{dust}}-F_{890 \mu\text{m}}$ relation seen previously for Lupus disks (Tazzari et al. 2017). The dashed gray line shows a Bayesian linear regression fit to the data, and the light gray lines are a subsample of the MCMC chains. Bottom right: lack of correlation between R_{gas} and M_* , likely due to the small range of M_* covered by the subsample of Lupus disks with R_{gas} constraints (see top right panel).

differences could be due solely to optical depth effects, we use a model with a uniform mix of small and large grains throughout the entire disk. Three other models then simulate grain growth, fragmentation, and radial drift by setting the maximum grain size as a function of radial distance from the host star based on fragmentation and radial drift limits with $\alpha_{\text{visc}} = 10^{-2}, 10^{-3}, 10^{-4}$.

Using the same curve-of-growth method as described in Section 5.1 to measure disk radii, we find that $R_{\text{gas}}/R_{\text{dust}} \approx 1.5$ for the model with uniform grain sizes, and $R_{\text{gas}}/R_{\text{dust}} \approx 3.0$ for the models including grain growth and radial drift. Therefore, based on these models, optical depth effects could explain the lower range of the measured $R_{\text{gas}}/R_{\text{dust}}$ values in Lupus, but grain growth and radial drift may also be needed to explain the higher values of $R_{\text{gas}}/R_{\text{dust}}$ seen in the data. We caution that these models only consider the collisional growth and fragmentation of the dust grains and do *not* include their kinematics within the disk, which could increase the differences in the modeled gas and dust radii. Moreover, the models currently do not include

simulated observational noise, which can affect the measured radii, especially for the gas due to low S/N in the outer disk.

Additionally, Figure 8 (lower left panel) shows a tentative correlation between R_{gas} and $F_{1.33 \text{ mm}}$, analogous to the continuum size–luminosity relations seen previously in young disk populations (Tazzari et al. 2017; Tripathi et al. 2017). The Bayesian linear regression method of Kelly (2007) gives the correlation $\log F_{1.33 \text{ mm}} = 1.00(\pm 0.45)\log R_{\text{gas}} - 0.66(\pm 1.04)$ with a correlation coefficient of 0.5 ± 0.2 and a dispersion of 0.42 ± 0.08 . To test the significance of the correlation, we use a Spearman rank test, which gives $\rho = 0.54$ and a p -value of 0.009. However, we caution that our sample is biased toward disks with both resolved continuum and gas emission; some Lupus disks exhibit faint and unresolved continuum emission, but bright and extended gas emission, and therefore may not follow this correlation.

We do not see a correlation between R_{gas} and M_* (lower right panel of Figure 8), although this is likely due to the bias of our sample toward the highest-mass disks around the highest-mass stars (upper right panel of Figure 8). More sensitive and

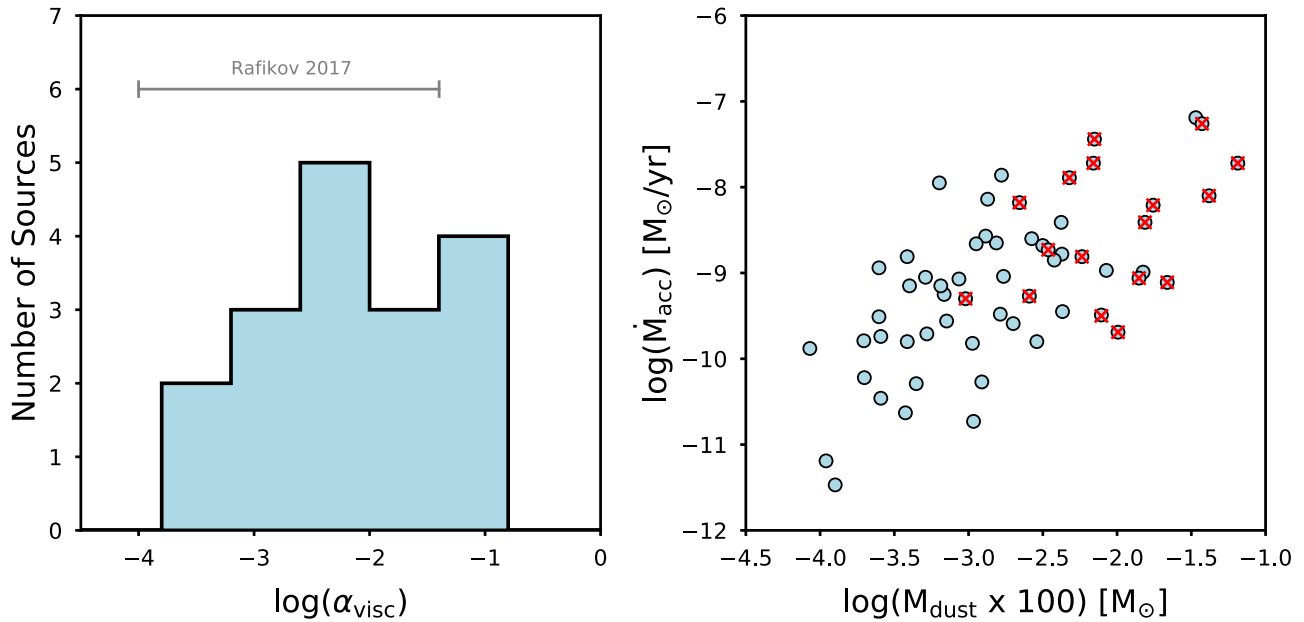


Figure 9. Left: distribution of the viscous parameter, α_{visc} , calculated from Equations (4) using outer disk radii derived from ^{12}CO emission and disk masses derived from continuum emission (Section 6.3). The gray line shows the similarly large range of α_{visc} values found by Rafikov (2017), who used continuum emission to derive both the disk radii and masses. Right: $\dot{M}_{\text{acc}}-M_{\text{d}}$ correlation seen for Lupus disks (Manara et al. 2016), with the subsample of resolved disks used for the α_{visc} calculations highlighted by red crosses, illustrating the bias toward high-mass and strongly accreting disks.

higher-resolution ^{12}CO line observations can probe the gas disks around lower-mass stars to provide better constraints on these possible relations between fundamental disk parameters.

6.3. Viscous Disk Evolution

Protoplanetary disks are traditionally thought to evolve through viscous evolution (Lynden-Bell & Pringle 1974; Hartmann et al. 1998). According to viscous evolution theory, turbulence in the disk redistributes angular momentum by transporting it outward to larger radii over time, which in turn drives the accretion of disk material inward through the disk and onto the central star. The viscosity of the disk cannot be easily quantified, but it can be characterized by the so-called α prescription (Shakura & Sunyaev 1973), where

$$\alpha_{\text{visc}} = \frac{\dot{M}_{\text{acc}}}{M_{\text{d}}} \frac{\mu}{k_{\text{B}} T_{\text{d}}} \Omega r_{\text{d}}^2. \quad (4)$$

In this framework, α_{visc} is a dimensionless parameter that is constant and $\lesssim 1$, T_{d} is the disk temperature, r_{d} is the outer disk radius, μ is the mean molecular weight, k_{B} is the Boltzmann constant, and Ω is the Keplerian angular frequency where $\Omega = (GM_{\star}/r_{\text{d}}^3)^{1/2}$. The ratio of the total disk mass (M_{d}) to the stellar mass accretion rate (\dot{M}_{acc}) gives the “disk lifetime,” which should be on the order of the age of the disk, but only for disk ages older than the viscous timescale, t_{ν} (e.g., Jones et al. 2012; Rosotti et al. 2017).

Placing observational constraints on α_{visc} is important because this parameter is thought to be directly related to the angular momentum transport in disks, and thus critical for understanding disk evolution. However, obtaining these constraints is complicated by difficulties with measuring the masses and radii for large samples of disks. Hartmann et al. (1998) used the average observed properties of protoplanetary disks in Taurus and Chamaeleon I, including a handful of disk

sizes derived from 2.7 mm continuum observations, to estimate $\alpha_{\text{visc}} \approx 10^{-2}$. However, recent observations of TW Hya and HD 163296, which provided the first tentative measurements of disk turbulence, suggest lower values of $\alpha_{\text{visc}} \lesssim 10^{-3}$ (Hughes et al. 2011; Flaherty et al. 2015; Teague et al. 2016).

For our Lupus sample, Rafikov (2017) calculated α_{visc} with Equation (4) using the 890 μm continuum properties derived in Paper I. He assumed $M_{\text{d}} = 100 M_{\text{dust}}$, took r_{d} from elliptical Gaussian fits to the continuum emission, and used isothermal disk temperatures of $T_{\text{d}} = 20$ K. Additionally, he took M_{\star} and \dot{M}_{acc} from Alcalá et al. (2014, 2017). Rafikov (2017) found a wide range of α_{visc} values spanning over two orders of magnitude, from 10^{-4} to 0.04, with no clustering around a particular value. The lack of any correlations between α_{visc} and other global disk parameters (M_{d} , r_{d} , Σ_{d}) or stellar parameters (M_{\star} , R_{\star} , L_{\star}) also led him to suggest that angular momentum transport may actually be performed non-viscously, for example, via MHD winds.

However, there are two main shortcomings of the analysis by Rafikov (2017): the small sample size of 26 sources (due to the need for well-resolved disks), and the use of Gaussian-fit estimates of the continuum emission for disk sizes (since the gas radii were not yet available). Our gas disk radii measured in Section 5.1 solve the latter issue, thus we repeat these α_{visc} calculations using instead $r_{\text{d}} = R_{\text{gas}}$ in Equation (4). As shown in the left panel of Figure 9, we still find a large range of α_{visc} values spanning over two orders of magnitude, from 0.0003 to 0.09, which is not surprising given the tight relation between R_{gas} and R_{dust} seen in Figure 8.

Similar to Rafikov (2017), we also find no correlations between α_{visc} and other disk or stellar properties. The reason for this is our small sample size of 22 disks, which does not allow us to overcome the first shortcoming of the work by Rafikov (2017) described above. Importantly, these sub-samples of resolved Lupus disks are not only small, but also heavily biased

toward the highest-mass disks, as shown in the right panel of Figure 9. This means that they lack sufficient leverage to exhibit the $\dot{M}_{\text{acc}}-M_{\text{d}}$ correlation, which is predicted by viscous evolution and seen in larger samples of disks in Lupus (Manara et al. 2016) and the similarly young Chamaeleon I region (Mulders et al. 2017). The lack of correlations between α_{visc} and other disk or stellar properties is thus dominated by the lack of correlation between \dot{M}_{acc} and M_{d} in the considered subsamples. Interestingly, Lodato et al. (2017) and Mulders et al. (2017) have shown that the large scatter in the observed $\dot{M}_{\text{acc}}-M_{\text{d}}$ relation seen in Lupus and Chamaeleon I can be reproduced by viscous evolution theory, if the age of the star-forming regions is younger than the viscous timescales of the disks. If this is true, the assumption made in Equation (4) of $\dot{M}_{\text{acc}}/M_{\text{d}} \gtrsim t_{\nu}$ no longer holds, and the derived values of α_{visc} must be considered with great caution.

Ultimately, estimates of disk radii for systems with lower stellar and disk masses are needed to extend the sample to the point where the $\dot{M}_{\text{acc}}-M_{\text{d}}$ relation can be recovered. Similar studies in older star-forming regions (e.g., Upper Sco) are also needed to insure that the $\dot{M}_{\text{acc}}/M_{\text{d}} \gtrsim t_{\nu}$ assumption is valid.

6.4. Limits on the Size of Optically Thick Emission

Submm/mm continuum emission is generally optically thin in most regions of a protoplanetary disk, which is why it is the most commonly used tracer of dust mass (Section 5.2.1). However, if the dust surface densities are high enough at the center of a disk—above roughly an Earth mass of dust spread over ~ 10 au in diameter—the emission can become optically thick. In this case, the observed submm/mm continuum flux is more a measure of the dust disk size than of the dust disk mass:

$$F_{\nu} = \int_{R_{\text{sub}}}^{R_{\text{thick}}} B_{\nu}(T) 2\pi r \cos i / d^2, \quad (5)$$

where r is the radial distance in the disk, d is the distance to the disk, R_{sub} is the inner radius of the disk defined by the dust sublimation temperature $T(R_{\text{sub}}) = 1500$ K, and i is the inclination of the (geometrically thin) disk to the line of sight. The dust temperature is

$$T = \left(\frac{L_{\star}}{16\pi\sigma_{\text{SB}}r^2} \right)^{1/4}, \quad (6)$$

where L_{\star} is the stellar luminosity and σ_{SB} is the Stefan–Boltzmann constant (e.g., Dullemond & Monnier 2010). For disks that are large enough to be resolved in our data, we derive i from the aspect ratio of the disk; for the unresolved disks, we use a mean value of $\langle \cos i \rangle = 2/\pi$. We then integrate outward until we match the observed central peak flux density in a beam centered on the stellar position, or for nondetections, the corresponding 3σ upper limit. After removal of the transition disks (van der Marel et al. 2018) and unresolved binary system V856 Sco, the derived R_{thick} ranges from 0.7 to 13 au with a median of 3.8 au for the detected disks, and 0.7–1.0 au with a median of 0.8 au for the nondetections (see upper panel of Figure 10).

For the nondetections, the limits on the dust content are very stringent, whether in terms of mass if the emission is optically thin or in radius if the emission is optically thick. We estimate that any optically thick central component would have to be

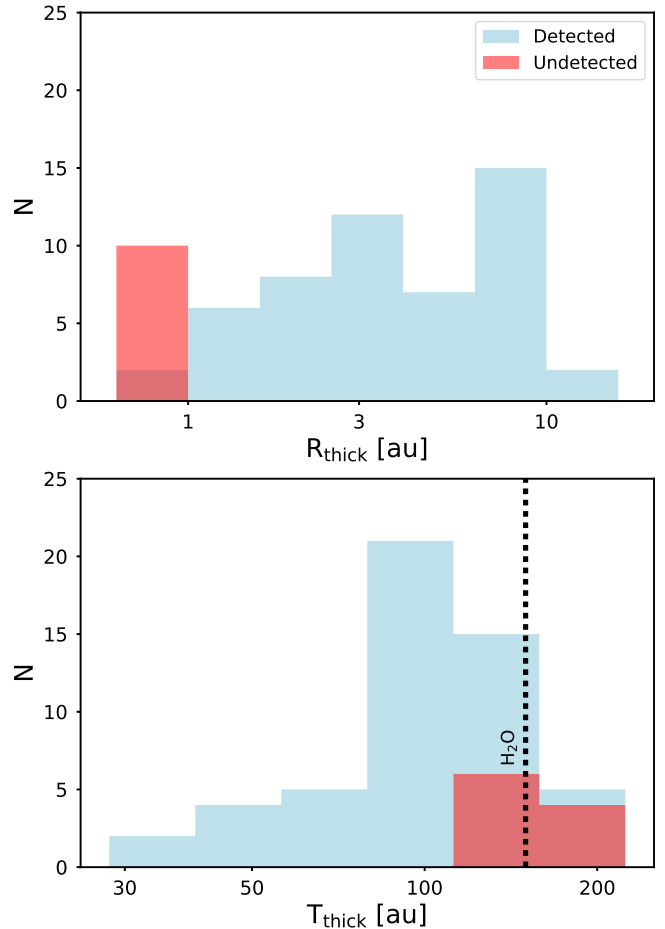


Figure 10. Distributions of disk sizes (top) and outer disk temperatures (bottom) for Lupus disks, assuming optically thick millimeter emission. The blue and red histograms indicate our ALMA detections and nondetections, respectively (Section 6.4). The dashed black line shows the water snowline.

less than 1 au in radius for the disk to escape detection. For the detections, our analysis provides an upper limit to the size of any central optically thick component, as we are matching the central peak flux density in the ~ 20 au beam and this likely includes some contribution from an extended optically thin component.

The derived limits on the thick disk radii of a few au are at an interesting scale, as this is comparable to where we expect the water snowline to reside. We expect the emission properties to change here due to the loss of ice and evolution of the grain size distribution (Banzatti et al. 2015), as observed at larger radii in the much more luminous FU Orionis object V883 Ori (Cieza et al. 2016). We therefore replot these results in terms of the temperature of the outer edge of the optically thick disk (lower panel of Figure 10). The range for the detected disks is 31–193 K with a median of 104 K and 123–223 K with a median of 104 K for the nondetections.

If a substantial fraction of the observed emission does indeed come from a compact and optically thick region, then many of the Lupus disks should remain detectable in relatively short ALMA integrations in much more extended configurations. Small and bright optically thick cores are found in the ultra-high resolution ALMA observations of TW Hya (Andrews et al. 2016) and HL Tau (ALMA Partnership et al. 2015). If

future imaging surveys show that such features are common, it would indicate the existence of large reservoirs of material in the innermost regions of disks as required by models of in situ formation for short-period planets (Chiang & Laughlin 2013).

7. Summary

We have conducted a high-sensitivity, high-resolution survey in ALMA Band 6 (1.33 mm) of a complete sample of protoplanetary disks in the young (1–3 Myr) and nearby (150–200 pc) Lupus star-forming region. The proximity and youth of this region make it an ideal target for a baseline study of early disk properties. This work built off of Paper I, which used ALMA Band 7 (890 μm) observations to constrain both dust and gas masses for an unbiased sample of protoplanetary disks in Lupus. In this work, we expanded our statistical studies by using our Band 6 data to estimate gas disk sizes, and by combining these new observations with our previous Band 7 data, constrained disk evolution processes such as dust grain growth, radial drift, and viscous evolution.

1. Our complete sample contained 95 Lupus protoplanetary disks, for which we obtained ALMA Band 6 data in the 1.33 mm continuum and ^{12}CO , ^{13}CO , and $\text{C}^{18}\text{O } J = 2-1$ lines. We detected 71 disks in the continuum, 48 in ^{12}CO , 20 ^{13}CO , and 8 in C^{18}O . The typical spatial resolution of our observations was $0''.25$ with a medium 3σ continuum sensitivity of 0.30 mJy.
2. We used the continuum and ^{12}CO emission to estimate the dust and gas radii for 22 Lupus disks. We employed a Keplerian masking technique to enhance the S/N of the ^{12}CO emission in the outer disk regions. We found that R_{gas} is universally larger than R_{dust} , with an average ratio of $R_{\text{gas}}/R_{\text{dust}} = 1.96 \pm 0.04$. This is likely due to both the optically thick ^{12}CO emission and the growth and inward drift of the dust. We also found a tentative correlation between R_{gas} and $F_{1.33\text{ mm}}$, reminiscent of the continuum size–luminosity relation seen in young star-forming regions.
3. Similar to Paper 1, we used the continuum emission to constrain disk dust masses down to $\sim 0.2 M_{\oplus}$. We recovered the $M_{\text{dust}}-M_{\star}$ relation and used a stacking analysis to again show that the average dust mass of an undetected Lupus disk is comparable to debris disk levels, indicating that protoplanetary disks evolve rapidly once clearing begins.
4. We combined our Band 6 and Band 7 data to measure the millimeter spectral index, α_{mm} , for 70 Lupus disks down to $F_{1.33\text{ mm}} = 0.35$ mJy. We found an anticorrelation between α_{mm} and M_{dust} for low-mass disks ($M_{\text{dust}} \lesssim 5M_{\oplus}$), followed by a flattening to $\alpha_{\text{mm}} \approx 2$. The decrease in α_{mm} for brighter disks may be due to more efficient grain growth in higher-mass disks, or may simply reflect larger optically thick regions in more massive disks, although our current data cannot distinguish between these scenarios.

5. Using our R_{gas} measurements, we calculated the viscous parameter, α_{visc} , finding a large range of values spanning several orders of magnitude and no correlations with other disk or stellar properties. We attributed this to the small and biased sample, which is too limited to recover the $\dot{M}_{\text{acc}}-M_{\text{d}}$ relation seen in larger samples of Lupus disks. Estimates of disk radii for systems with lower stellar and disk masses are thus still needed.
6. We placed constraints on the sizes of optically thick inner disk regions for both the continuum detections and nondetections in our sample. The derived limits of a few au are interesting because they are comparable to the expected location of the water snowline, where submm/mm emission properties should change. If a substantial fraction of the observed continuum emission does indeed come from compact and optically thick inner disk regions, then this could potentially provide a large reservoir of material for the in situ formation of short-period planets.

M.A. and J.P.W. were supported by NSF and NASA grants AST-1208911 NNX15AC92G, respectively. M.A. also acknowledges support from NSF AST-1518332, NASA NNX15AC89G, NNX15AD95G/NEXSS, and the Center for Integrative Planetary Science at UC Berkeley. Leiden is supported by the European Union A-ERC grant 291141 CHEMPLAN, by the Netherlands Research School for Astronomy (NOVA), and by grant 614.001.352 from the Netherlands Organization for Scientific Research (NWO). A.M. and C.F.M. are supported by ESO Fellowships. M.R.H. is supported by NWO grant 614.001.352. M.T. has been supported by the DISCSIM project, grant agreement 341137 funded by the European Research Council under ERC-2013-ADG. This paper makes use of the following ALMA data: 2015.1.00222.S, 2016.1.01239.S, 2013.1.00226.S, 2013.1.01020.S. ALMA is a partnership of ESO (representing its member states), NSF (USA) and NINS (Japan), together with NRC (Canada), NSC and ASIAA (Taiwan), and KASI (Republic of Korea), in cooperation with the Republic of Chile. The Joint ALMA Observatory is operated by ESO, AUI/NRAO and NAOJ. The National Radio Astronomy Observatory is a facility of the National Science Foundation operated under cooperative agreement by Associated Universities, Inc. This work benefited from NASA’s Nexus for Exoplanet System Science (NExSS) research coordination network sponsored by NASA’s Science Mission Directorate.

Appendix A ^{12}CO Spectra

Figure 11 shows the ^{12}CO spectra for the 48 Lupus disks detected in this line (see Section 4.2). Cloud absorption is commonly seen in the spectra, thus we do not provide integrated ^{12}CO line fluxes in Table 2.

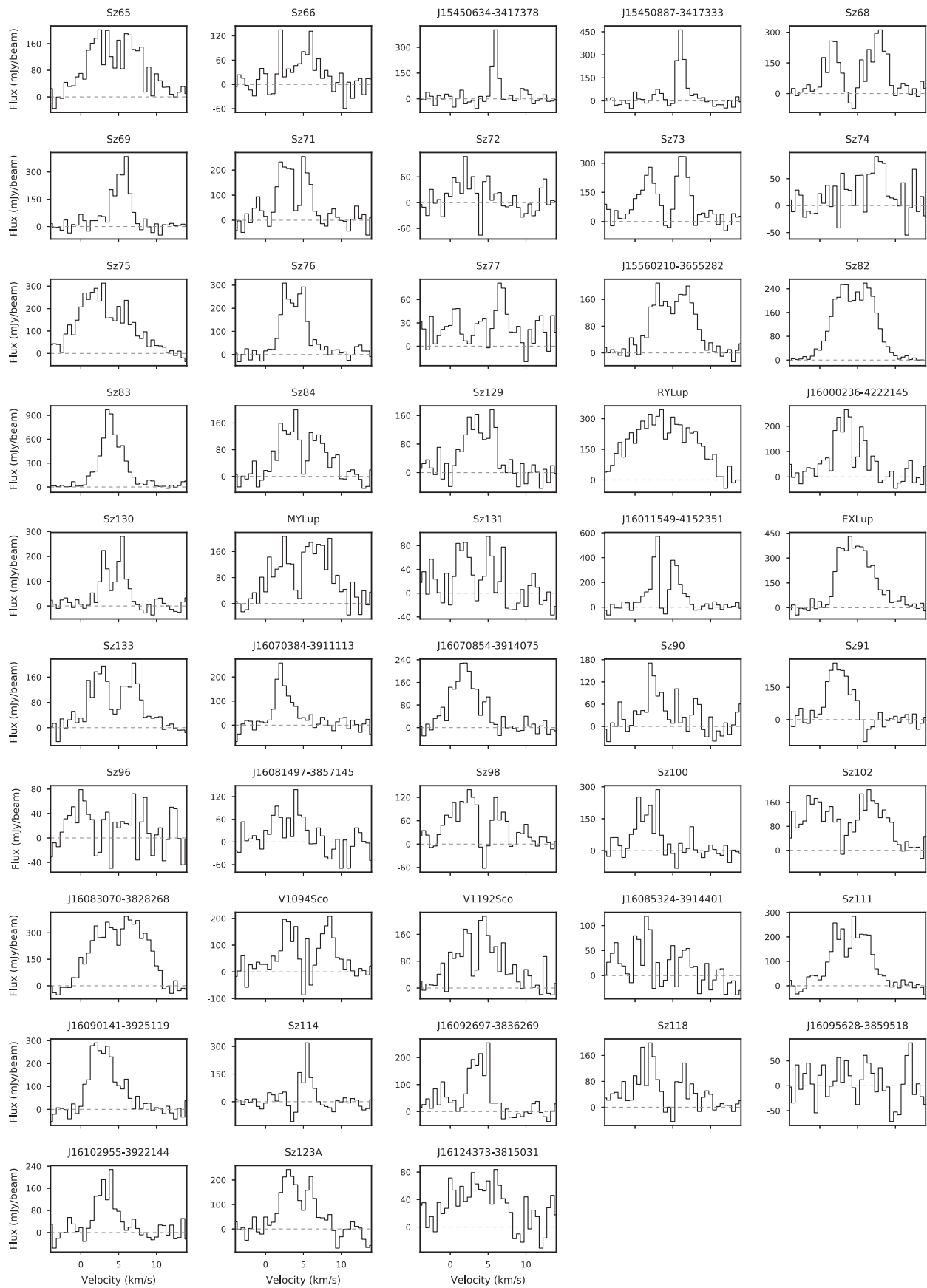


Figure 11. ^{12}CO spectra for the 48 Lupus disks detected in this line, illustrating that cloud absorption is common.

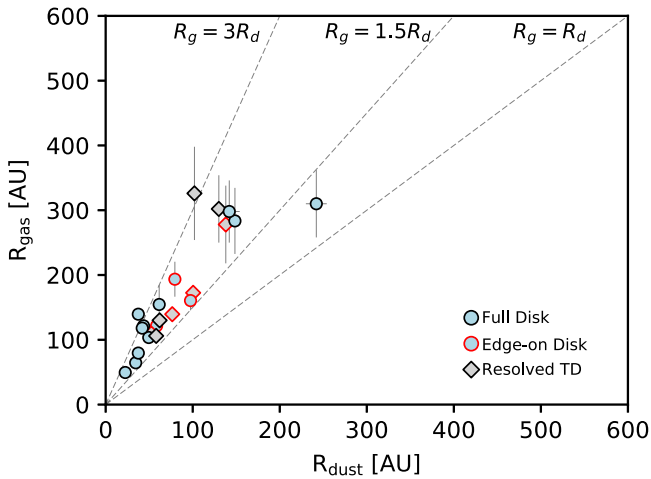


Figure 12. Comparisons of the gas disk radius (R_{gas}) and dust disk radius (R_{dust}) for Lupus disks with constraints on both parameters, now using 68% of the total flux for the radius measurements (rather than 90% as in Section 5.1). The plot is remarkably similar to Figure 8: R_{gas} is still universally larger than R_{dust} with a similar average ratio of $R_{\text{gas}}/R_{\text{dust}} = 2.06 \pm 0.03$.

Appendix B Keplerian Masking

Figure 12 shows the same as the upper left panel of Figure 8, except now using 68% of the total flux as the cutoff for the radius curve-of-growth measurements (rather than 90%; see Section 5.1). Significant differences in radius estimates can arise when using different flux cutoffs in a curve-of-growth analysis due to low S/Ns in the outer disk regions where emission can be very faint, especially for the gas. However, as shown in Figure 12, using a more conservative flux cutoff does not change our key results: we still find universally larger gas disk sizes with a similar average ratio of $R_{\text{gas}}/R_{\text{dust}} = 2.06 \pm 0.03$.

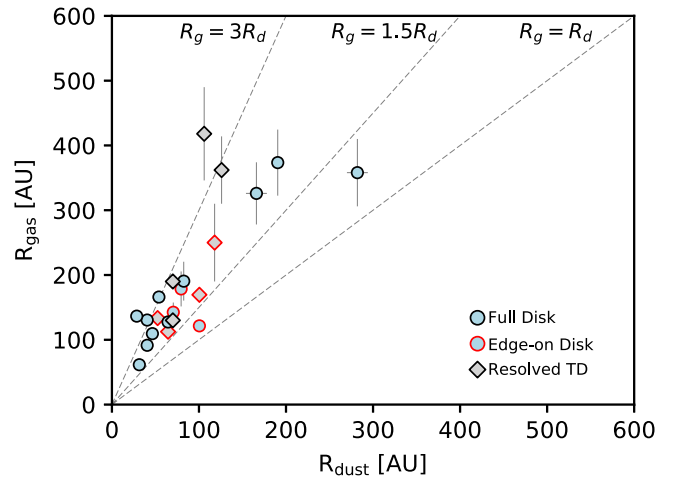


Figure 13. Comparisons of the gas disk radius (R_{gas}) and dust disk radius (R_{dust}) for Lupus disks with constraints on both parameters, now using a circular aperture (rather than an elliptical aperture) to measure the radius at 90% of the total flux. The plot is remarkably similar to Figure 8: R_{gas} is still universally larger than R_{dust} with a similar average ratio of $R_{\text{gas}}/R_{\text{dust}} = 1.90 \pm 0.03$.

Figure 13 shows the same as the upper left panel of Figure 8, except now using a circular aperture (rather than an elliptical aperture) to measure the radius at 90% of the total flux. Significant variations in radius estimates can arise when using elliptical apertures, in particular for edge-on disks, if the inclination is poorly constrained. However, as shown in Figure 13, using a circular aperture does not change our key results: we still find universally larger gas disk sizes with a similar average ratio of $R_{\text{gas}}/R_{\text{dust}} = 1.90 \pm 0.03$.

The zero-moment maps before and after Keplerian masking for all Lupus disk with measured gas radii are shown in Figure 14.

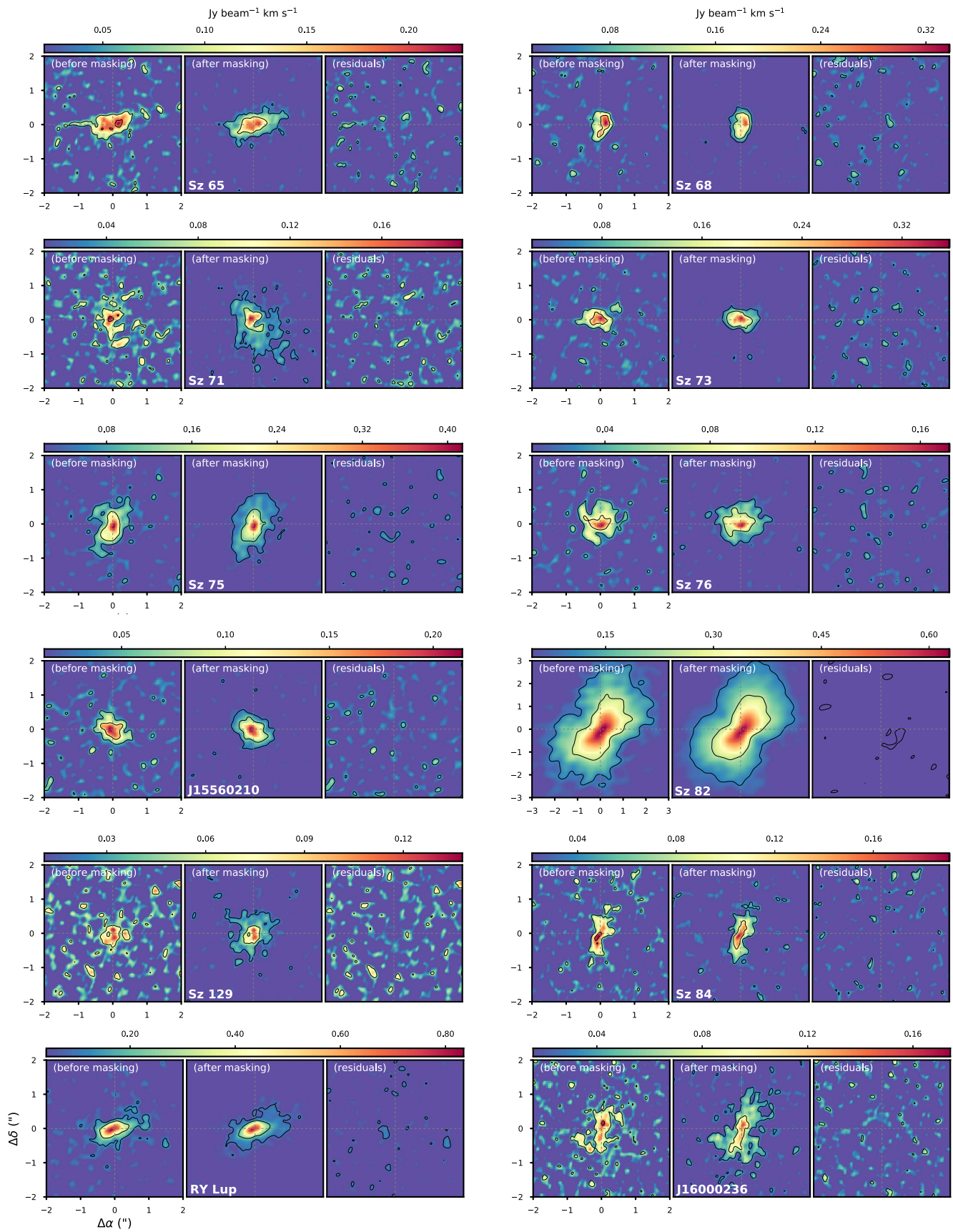


Figure 14. Zero-moment maps for our Lupus sources with R_{gas} measurements, before (left) and after (middle) Keplerian masking, as well as the residuals (right). The black lines are 2σ and 5σ contours, illustrating the improvement in S/N in the fainter outer disk regions (see Section 5.1). The residuals confirm that the masking does not exclude any disk flux.

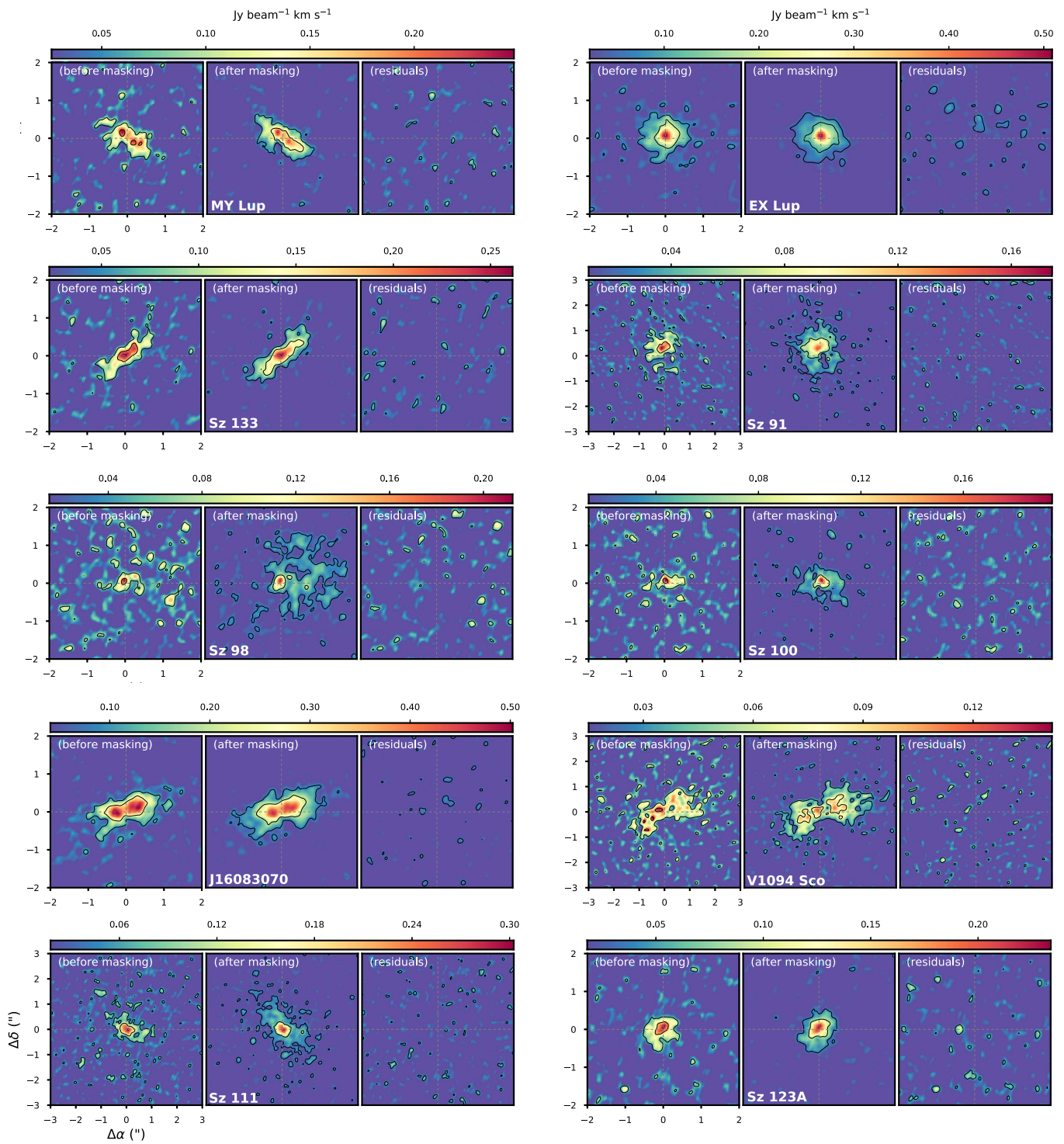


Figure 14. (Continued.)

Appendix C Possible Outflow Sources

Figures 15 and 16 show the ^{12}CO channel maps for the two disks in our survey, Sz 83 and J15450634-3417378, that exhibit evidence of wide-angle outflows or remnants thereof

(see Section 5.4.3). Figure 17 shows the outflow of IRAS 15398-3359, which is not in our sample, but whose ^{12}CO emission appears to be aligned with the position of an undetected source targeted by our survey, J15430131-3409153.

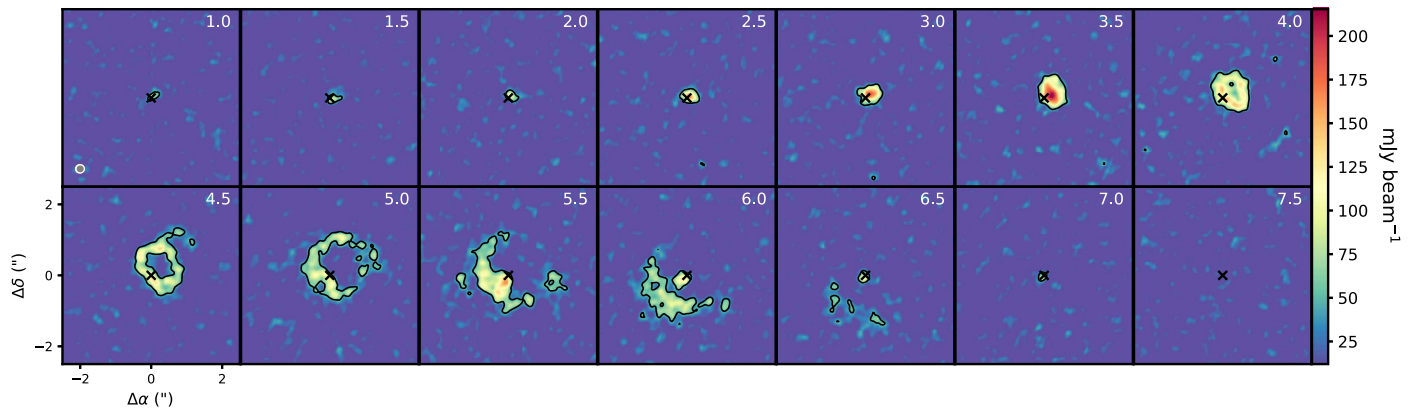


Figure 15. Possible outflow seen in the ^{12}CO channel maps of Sz 83. The black cross is the location of the continuum source, and the black lines are 4σ contours of the ^{12}CO emission. The velocities in km s^{-1} are given in the top right corner of each channel, and the beam size is shown by the gray ellipse in the lower left corner of the first channel.

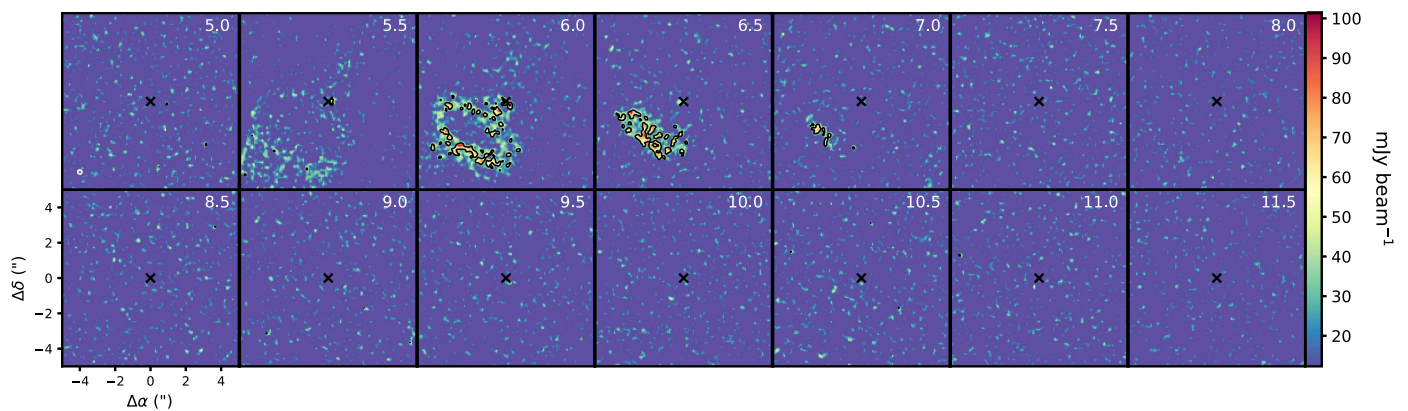


Figure 16. Possible outflow seen in the ^{12}CO channel maps of J15450634-3417378. The symbols are the same as in Figure 15.

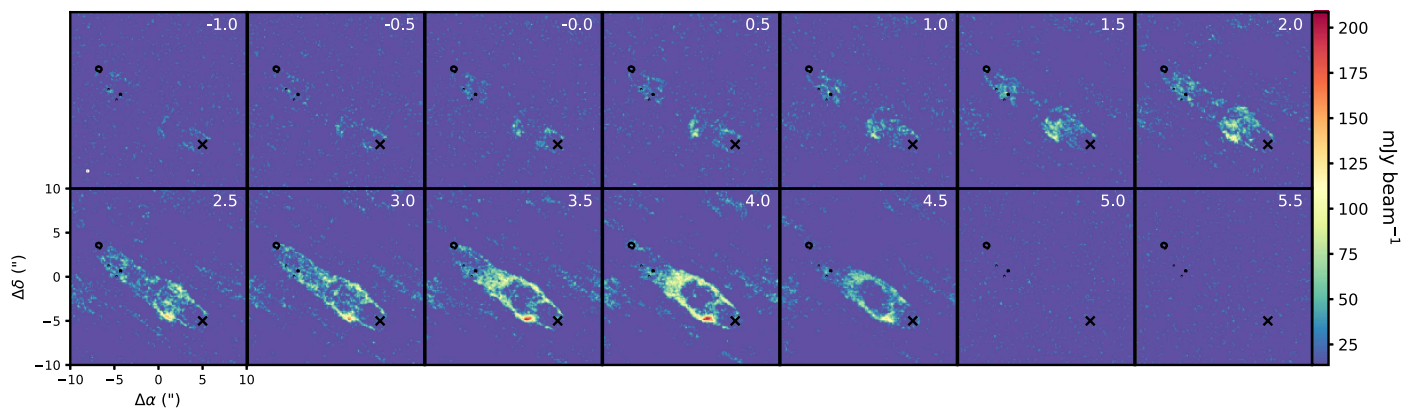


Figure 17. Outflow from IRAS 15398-3359, seen in the ^{12}CO channel maps of J15430131-3409153. The symbols are the same as in Figure 15, except that the contours now trace the continuum emission in order to highlight the location of IRAS 15398-3359 (upper left corner). Moreover, because we do not detect J15430131-3409153, the black cross is the phase center of our observations.

ORCID iDs

M. Ansdell <https://orcid.org/0000-0003-4142-9842>
 J. P. Williams <https://orcid.org/0000-0001-5058-695X>
 S. Facchini <https://orcid.org/0000-0003-4689-2684>
 C. F. Manara <https://orcid.org/0000-0003-3562-262X>
 N. van der Marel <https://orcid.org/0000-0003-2458-9756>
 A. Miotello <https://orcid.org/0000-0002-7997-2528>
 M. Tazzari <https://orcid.org/0000-0003-3590-5814>

M. Hogerheijde <https://orcid.org/0000-0001-5217-537X>
 L. Testi <https://orcid.org/0000-0003-1859-3070>
 E. F. van Dishoeck <https://orcid.org/0000-0001-7591-1907>

References

Alcalá, J. M., Manara, C. F., Natta, A., et al. 2017, *A&A*, 600, A20
 Alcalá, J. M., Natta, A., Manara, C. F., et al. 2014, *A&A*, 561, A2
 Alecian, E., Wade, G. A., Catala, C., et al. 2013, *MNRAS*, 429, 1001

- Alexander, R., Pascucci, I., Andrews, S., Armitage, P., & Cieza, L. 2014, in *Protostars and Planets VI*, ed. H. Beuther et al. (Tucson, AZ: Univ. Arizona Press), 475
- ALMA Partnership, Brogan, C. L., Pérez, L. M., et al. 2015, *ApJL*, 808, L3
- Andrews, S. M., Rosenfeld, K. A., Kraus, A. L., & Wilner, D. J. 2013, *ApJ*, 771, 129
- Andrews, S. M., & Williams, J. P. 2005, *ApJ*, 631, 1134
- Andrews, S. M., Wilner, D. J., Hughes, A. M., et al. 2012, *ApJ*, 744, 162
- Andrews, S. M., Wilner, D. J., Zhu, Z., et al. 2016, *ApJL*, 820, L40
- Ansdell, M., Williams, J. P., Manara, C. F., et al. 2017, *AJ*, 153, 240
- Ansdell, M., Williams, J. P., van der Marel, N., et al. 2016, *ApJ*, 828, 46
- Ataiee, S., Pinilla, P., Zsom, A., et al. 2013, *A&A*, 553, L3
- Bai, X.-N. 2017, *ApJ*, 845, 75
- Bai, X.-N., Ye, J., Goodman, J., & Yuan, F. 2016, *ApJ*, 818, 152
- Banzatti, A., Pinilla, P., Ricci, L., et al. 2015, *ApJL*, 815, L15
- Barenfeld, S. A., Carpenter, J. M., Ricci, L., & Isella, A. 2016, *ApJ*, 827, 142
- Barenfeld, S. A., Carpenter, J. M., Sargent, A. I., Isella, A., & Ricci, L. 2017, *ApJ*, 851, 85
- Beckwith, S. V. W., Sargent, A. I., Chini, R. S., & Guesten, R. 1990, *AJ*, 99, 924
- Birnstiel, T., & Andrews, S. M. 2014, *ApJ*, 780, 153
- Birnstiel, T., Andrews, S. M., Pinilla, P., & Kama, M. 2015, *ApJL*, 813, L14
- Bjerkeli, P., van der Wiel, M. H. D., Harsono, D., Ramsey, J. P., & Jørgensen, J. K. 2016, *Natur*, 540, 406
- Bowler, B. P., Liu, M. C., Shkolnik, E. L., & Tamura, M. 2015, *ApJS*, 216, 7
- Bruderer, S. 2013, *A&A*, 559, A46
- Bruderer, S., van Dishoeck, E. F., Doty, S. D., & Herczeg, G. J. 2012, *A&A*, 541, A91
- Bustamante, I., Merín, B., Ribas, Á., et al. 2015, *A&A*, 578, A23
- Casassus, S., Wright, C. M., Marino, S., et al. 2015, *ApJ*, 812, 126
- Cassan, A., Kubas, D., Beaulieu, J.-P., et al. 2012, *Natur*, 481, 167
- Chiang, E., & Laughlin, G. 2013, *MNRAS*, 431, 3444
- Cieza, L. A., Casassus, S., Tobin, J., et al. 2016, *Natur*, 535, 258
- Cleeves, L. I., Öberg, K. I., Wilner, D. J., et al. 2016, *ApJ*, 832, 110
- Comerón, F. 2008, in *Handbook of Star Forming Regions II*, ed. B. Reipurth (San Francisco, CA: ASP), 295
- Connelly, J. N., Amelin, Y., Krot, A. N., & Bizzarro, M. 2008, *ApJL*, 675, L121
- Correia, S., Zinnecker, H., Ratzka, T., & Sterzik, M. F. 2006, *A&A*, 459, 909
- Cox, E. G., Harris, R. J., Looney, L. W., et al. 2017, *ApJ*, 851, 83
- de Gregorio-Monsalvo, I., Ménard, F., Dent, W., et al. 2013, *A&A*, 557, A133
- Draine, B. T. 2006, *ApJ*, 636, 1114
- Dullemond, C. P., & Monnier, J. D. 2010, *ARA&A*, 48, 205
- Dunham, M. M., Allen, L. E., Evans, N. J., II, et al. 2015, *ApJS*, 220, 11
- Dutrey, A., Guilloteau, S., Prato, L., et al. 1998, *A&A*, 338, L63
- Evans, N. J., II, Dunham, M. M., Jørgensen, J. K., et al. 2009, *ApJS*, 181, 321
- Facchini, S., Birnstiel, T., Bruderer, S., & van Dishoeck, E. F. 2017, *A&A*, 605, A16
- Flaherty, K. M., Hughes, A. M., Rosenfeld, K. A., et al. 2015, *ApJ*, 813, 99
- Frasca, A., Biazzo, K., Alcalá, J. M., et al. 2017, *A&A*, 602, A33
- Fressin, F., Torres, G., Charbonneau, D., et al. 2013, *ApJ*, 766, 81
- Gaidos, E., Mann, A. W., Kraus, A. L., & Ireland, M. 2016, *MNRAS*, 457, 2877
- Gressel, O., Turner, N. J., Nelson, R. P., & McNally, C. P. 2015, *ApJ*, 801, 84
- Guilloteau, S., & Dutrey, A. 1998, *A&A*, 339, 467
- Guilloteau, S., Dutrey, A., Piétu, V., & Boehler, Y. 2011, *A&A*, 529, A105
- Hartmann, L., Calvet, N., Gullbring, E., & D'Alessio, P. 1998, *ApJ*, 495, 385
- Herczeg, G. J., Walter, F. M., Linsky, J. L., et al. 2005, *AJ*, 129, 2777
- Hernández, J., Hartmann, L., Megeath, T., et al. 2007, *ApJ*, 662, 1067
- Hildebrand, R. H. 1983, *QJRAS*, 24, 267
- Hirota, T., Machida, M. N., Matsushita, Y., et al. 2017, *NatAs*, 1, 0146
- Hogerheijde, M. R., Bekkers, D., Pinilla, P., et al. 2016, *A&A*, 586, A99
- Hughes, A. M., Wilner, D. J., Andrews, S. M., Qi, C., & Hogerheijde, M. R. 2011, *ApJ*, 727, 85
- Hughes, J., Hartigan, P., Krautter, J., & Kelemen, J. 1994, *AJ*, 108, 1071
- Isella, A., Testi, L., Natta, A., et al. 2007, *A&A*, 469, 213
- Jones, M. G., Pringle, J. E., & Alexander, R. D. 2012, *MNRAS*, 419, 925
- Jørgensen, J. K., Visser, R., Sakai, N., et al. 2013, *ApJL*, 779, L22
- Kelly, B. C. 2007, *ApJ*, 665, 1489
- Kleine, T., Munker, C., Mezger, K., & Palme, H. 2002, *Natur*, 418, 952
- Kraus, S., Kreplin, A., Fukugawa, M., et al. 2017, *ApJL*, 848, L11
- Leinert, C., Richichi, A., & Haas, M. 1997, *A&A*, 318, 472
- Li, A., & Draine, B. T. 2001, *ApJ*, 554, 778
- Lodato, G., Scardoni, C. E., Manara, C. F., & Testi, L. 2017, *MNRAS*, 472, 4700
- Lynden-Bell, D., & Pringle, J. E. 1974, *MNRAS*, 168, 603
- Manara, C. F., Rosotti, G., Testi, L., et al. 2016, *A&A*, 591, L3
- Merín, B., Jørgensen, J., Spezzi, L., et al. 2008, *ApJS*, 177, 551
- Miotello, A., van Dishoeck, E. F., Kama, M., & Bruderer, S. 2016, *A&A*, 594, A85
- Miotello, A., van Dishoeck, E. F., Williams, J. P., et al. 2017, *A&A*, 599, A113
- Montet, B. T., Crepp, J. R., Johnson, J. A., Howard, A. W., & Marcy, G. W. 2014, *ApJ*, 781, 28
- Morbidelli, A., & Raymond, S. N. 2016, *JGRE*, 121, 1962
- Mortier, A., Oliveira, I., & van Dishoeck, E. F. 2011, *MNRAS*, 418, 1194
- Mulders, G. D., Pascucci, I., Manara, C. F., et al. 2017, *ApJ*, 847, 31
- Panić, O., Hogerheijde, M. R., Wilner, D., & Qi, C. 2009, *A&A*, 501, 269
- Pascucci, I., Testi, L., Herczeg, G. J., et al. 2016, *ApJ*, 831, 125
- Pérez, L. M., Isella, A., Carpenter, J. M., & Chandler, C. J. 2014, *ApJL*, 783, L13
- Pinilla, P., Benisty, M., Birnstiel, T., et al. 2014, *A&A*, 564, A51
- Pinilla, P., van der Marel, N., Pérez, L. M., et al. 2015, *A&A*, 584, A16
- Principe, D. A., Cieza, L., Hales, A., et al. 2018, *MNRAS*, 473, 879
- Rafikov, R. R. 2017, *ApJ*, 837, 163
- Reipurth, B., & Zinnecker, H. 1993, *A&A*, 278, 81
- Ribas, Á., Espaillat, C. C., Macías, E., et al. 2017, *ApJ*, 849, 63
- Ricci, L., Trotta, F., Testi, L., et al. 2012, *A&A*, 540, A6
- Rosotti, G. P., Clarke, C. J., Manara, C. F., & Facchini, S. 2017, *MNRAS*, 468, 1631
- Ruiz-Rodríguez, D., Cieza, L. A., Williams, J. P., et al. 2017a, *MNRAS*, 468, 3266
- Ruiz-Rodríguez, D., Cieza, L. A., Williams, J. P., et al. 2017b, *MNRAS*, 466, 3519
- Salinas, V. N., Hogerheijde, M. R., Mathews, G. S., et al. 2017, *A&A*, 606, A125
- Shakura, N. I., & Sunyaev, R. A. 1973, *A&A*, 24, 337
- Siess, L., Dufour, E., & Forestini, M. 2000, *A&A*, 358, 593
- Tazzari, M., Testi, L., Ercolano, B., et al. 2016, *A&A*, 588, A53
- Tazzari, M., Testi, L., Natta, A., et al. 2017, *A&A*, 606, A88
- Teague, R., Guilloteau, S., Semenov, D., et al. 2016, *A&A*, 592, A49
- Testi, L., Birnstiel, T., Ricci, L., et al. 2014, in *Protostars and Planets VI*, ed. H. Beuther et al. (Tucson, AZ: Univ. Arizona Press), 339
- Tripathi, A., Andrews, S. M., Birnstiel, T., & Wilner, D. J. 2017, *ApJ*, 845, 44
- van der Marel, N., van Dishoeck, E. F., Bruderer, S., et al. 2013, *Sci*, 340, 1199
- van der Marel, N., Williams, J. P., Ansdell, M., et al. 2018, *ApJ*, 854, 177
- van Dishoeck, E. F., & Black, J. H. 1988, *ApJ*, 334, 771
- Weidenschilling, S. J. 1977, *Ap&SS*, 51, 153
- Williams, J. P., & Best, W. M. J. 2014, *ApJ*, 788, 59
- Woitats, J., Köhler, R., & Leinert, C. 2001, *A&A*, 369, 249
- Wyatt, M. C. 2008, *ARA&A*, 46, 339
- Zurlo, A., Cieza, L. A., Williams, J. P., et al. 2017, *MNRAS*, 465, 834