


Research Article

PD-1 expression is upregulated on adapted T cells in experimental autoimmune encephalomyelitis but is not required to maintain a hyporesponsive state

Iris Mair¹, Dario Besusso¹, Louise Saul¹, Sarju D. Patel¹,
Rahul Ravindran¹, Rhoanne C. McPherson¹, Melanie D. Leech¹,
Richard A. O'Connor¹, Stephen M. Anderton¹
and Richard J. Mellanby^{1,2} 

¹ MRC Centre for Inflammation Research, Centre for Multiple Sclerosis Research, Centre for Immunity, Infection and Evolution, The University of Edinburgh, Edinburgh, UK

² The Royal (Dick) School of Veterinary Studies and The Roslin Institute, Division of Veterinary Clinical Studies, The University of Edinburgh, Hospital for Small Animals, Easter Bush Veterinary Centre, Roslin, Midlothian, UK

T cell adaptation is an important peripheral tolerogenic process which ensures that the T cell population can respond effectively to pathogens but remains tolerant to self-antigens. We probed the mechanisms of T cell adaptation using an experimental autoimmune encephalomyelitis (EAE) model in which the fate of autopathogenic T cells could be followed. We demonstrated that immunisation with a high dose of myelin basic protein (MBP) peptide and complete Freund's adjuvant failed to effectively initiate EAE, in contrast to low dose MBP peptide immunisation which readily induced disease. The proportion of autopathogenic CD4⁺ T cells in the central nervous system (CNS) of mice immunised with a high dose of MBP peptide was not significantly different to mice immunised with a low dose. However, autopathogenic T cells in mice immunised with high dose MBP peptide had an unresponsive phenotype in *ex vivo* recall assays. Importantly, whilst expression of PD-1 was increased on adapted CD4⁺ T cells within the CNS, loss of PD-1 function did not prevent the development of the unresponsive state. The lack of a role for PD-1 in the acquisition of the adapted state stands in striking contrast to the reported functional importance of PD-1 in T cell unresponsiveness in other disease models.

Keywords: Adaptation · Autoimmunity · Experimental autoimmune encephalomyelitis · PD-1 · T cell



Additional supporting information may be found online in the Supporting Information section at the end of the article.

Introduction

Understanding how the immune system is able to deal with a diverse range of pathogens yet remain tolerant to self-antigens is

one of the great challenges in cellular immunology [1]. The steady increase in incidence and prevalence of autoimmune diseases across the globe over the past decades emphasises the importance of identifying the mechanisms by which self-tolerance is maintained [2, 3]. Central and peripheral tolerogenic mechanisms play a key role in ensuring that the T cell repertoire is highly diverse yet is sufficiently well regulated to prevent the development of an

Correspondence: Prof. Richard J. Mellanby
e-mail: Richard.Mellanby@ed.ac.uk

autopathogenic T cell response [1, 4–7]. Collectively, these mechanisms ensure that the T cell population can respond effectively to a pathogen challenge but that this response does not result in over-zealous immune activation which would lead to long term damage to the host.

The development of an unresponsive state following exposure to antigen was first termed anergy based on *in vitro* studies of murine and human T cell clones [8]. Anergy can be induced through several approaches, including the presentation of antigen in the absence of co-stimulation from antigen presenting cells [9, 10] and induction of sustained calcium signalling [11]. Key features of anergy include the failure to produce selective cytokines, notably interleukin-2 (IL-2), in response to antigen re-stimulation, the lack of a requirement for antigen to maintain the anergic state and the ability of IL-2 to reverse anergy [8]. In contrast, T cells which develop an unresponsive state post antigen stimulation *in vivo* appear to have a different phenotype from *in vitro* anergic cells [12]. Typically, T cells which are hyporesponsive to TCR re-stimulation following primary antigen exposure *in vivo* down-regulate the production of all cytokines and require antigen persistence to maintain the unresponsive state, which cannot be reversed by addition of IL-2. A variety of *in vivo* manipulations have been applied to induce a hyporesponsive state in T cells which has been termed adaptive tolerance [8, 12–19].

The regulatory processes or molecules involved in the development and maintenance of an adapted state in T cells in the context of autoantigens are poorly understood. Recently, the co-inhibitory receptor programmed cell death protein 1 (PD-1) has been implicated in the development of T cell tolerance following administration of soluble peptide, also termed peptide immunotherapy [20]. PD-1 is upregulated on CD4⁺ T cells following activation and thereby restrains the primary immune response [21]. Mice that lack PD-1 develop spontaneous autoimmune pathology [22] and signalling through PD-1 after T cell receptor (TCR) stimulation inhibits proliferation of T cells and reduces the production of effector cytokines [23]. The discovery of PD-1/PD-L1 interaction as a target for checkpoint inhibition has led to several successful clinical trials and the approval of PD-1 inhibitors as treatment for a number of cancer types [24–26]. However, it remains unclear whether PD-1 plays a role in the development of T cell adaptation *in vivo* following exposure to high concentrations of autoantigen under pro-inflammatory conditions.

In this study we probed the mechanisms and consequences of T cell adaptation in experimental autoimmune encephalomyelitis (EAE), a widely used model of multiple sclerosis. In this model, CD4⁺ T cells are activated by immunisation with CNS antigens in peripheral lymph nodes or *ex vivo* pre-activated cells are injected into the bloodstream, and effector T cells consequently make their way into the CNS where they cause inflammation upon re-encounter with their cognate antigen. We were particularly interested to establish whether adapted T cells could traffic to a site of autoantigen presentation and to define whether increased PD-1 expression played a critical role in the development of the adapted state.

Results

High dose of agonist stimulation *in vitro* results in CD4⁺ T cell adaptation

The Tg4 transgenic mouse provides a source of naïve T cells expressing a TCR with a moderate affinity for the Ac1-9-I-A^u complex [27]. Substitution of a tyrosine for the native lysine at position 4 increases the MHC binding affinity by approximately 1 million fold, creating a superagonist ligand (4Tyr) for Tg4 cells *in vitro* [28]. Initially, we examined how varying the concentration of MBP Ac1-9(4Tyr) peptide influenced the proliferation of Tg4 T cells *in vitro*. As expected, increasing the dose of MBP Ac1-9(4Tyr) resulted in an increase in proliferation and production of effector cytokines (Fig. 1A). In the next experiment, we examined how the Tg4 T cell lines (TCL) proliferated in a recall assay after initial stimulation with MBP Ac1-9(4Tyr) peptide. In order to do this we generated Tg4 TCL by initially stimulating Tg4 splenocytes with either 1 μM, 0.1 μM or 0.01 μM MBP Ac1-9(4Tyr). After 48 h, live cells were isolated and the T cell population was expanded in media enriched with T cell growth factors for a further 4 days prior to isolation of CD4⁺ Tg4 TCL by FACS (Supporting Information Fig. 1). In contrast to the findings during the primary stimulation, we found that Tg4 TCL generated through initial stimulation with 1 μM MBP Ac1-9(4Tyr) subsequently proliferated less, and produced lower amounts of pro-inflammatory cytokines, than cells stimulated with initially lower doses of antigen when co-cultured with irradiated AMK₃₅ splenocytes which constitutively express a MBP epitope in MHC class II molecules [29] (Fig. 1B). From this we concluded that initial stimulation with high dose peptide resulted in the generation of a population of hyporesponsive T cells which proliferated less and produced a reduced amount of effector cytokines when stimulated with antigen on a second occasion.

In order to examine whether the adapted state could be overcome through signalling downstream of the TCR, the three Tg4 TCL were stimulated with phorbol myristate acetate (PMA) and ionomycin. As shown in Fig. 1C, all TCL produced similar concentrations of IL-2 and IFN-γ in response to PMA and ionomycin. This demonstrated that the adapted state was maintained through differential signalling between the TCR and I-A^u-MBP complex and upstream T cell activation pathways, since re-stimulation with PMA and ionomycin resulted in equivalent proliferation and effector cytokine production in the three Tg4 TCL.

Immunisation with high dose of MBP does not result in deletion of MBP-responsive CD4⁺ T cells

The above experiments examined the effects of varying antigen concentration on future T cell phenotypes *in vitro*. Next, we wanted to examine whether T cells were adapted *in vivo* following high dose immunisation with MBP Ac1-9(4Tyr). Host C57BL/6 x B10.PL mice were seeded with Tg4.CD45.1 CD4⁺ T cells and 24 h

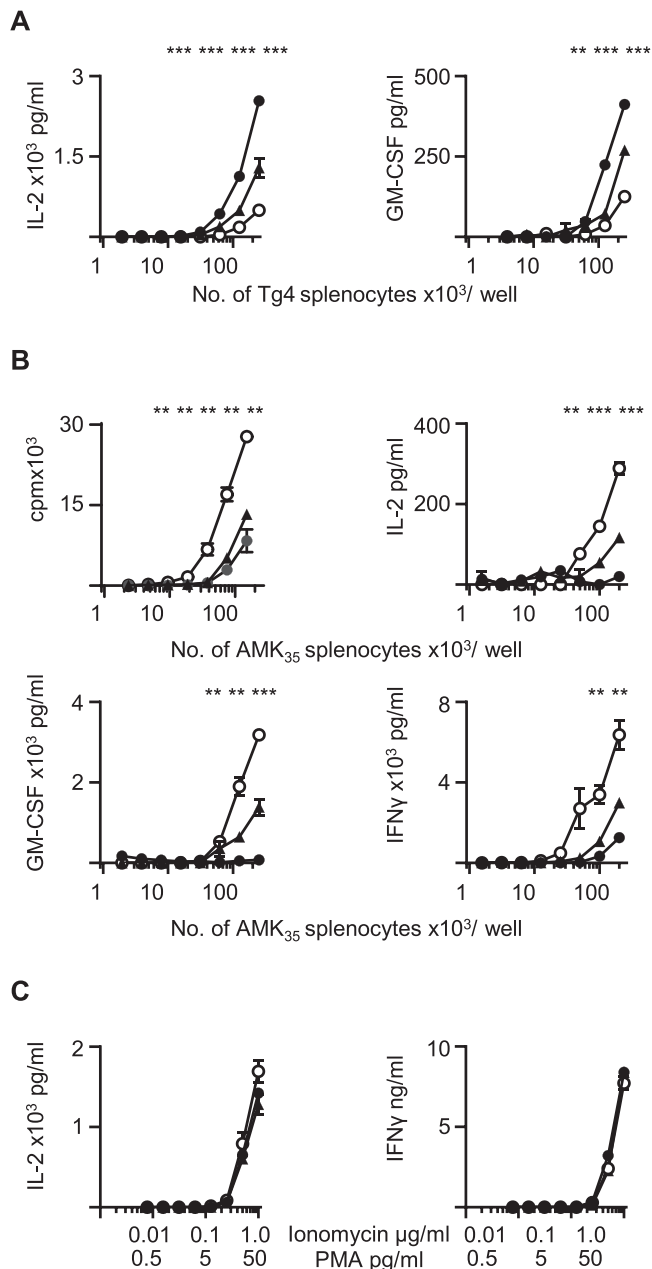


Figure 1. High dose of agonist stimulation in vitro results in CD4⁺ T cell adaptation. (A) Splenocytes isolated from naive Tg4 transgenic mice were cultured in the presence of 1 μ M (dark circle), 0.1 μ M (triangle) and 0.01 μ M (open circle) 4Tyr MBP, and IL-2 and GM-CSF production was analysed by ELISA 48 and 72 h later, respectively. (B) Proliferation (as measured by thymidine incorporation) and IL-2, IFN γ and GM-CSF production (analysed by ELISA) of Tg4 TCL cells generated in the presence of 1 μ g/mL (dark circle) 0.1 μ M (triangle) or 0.01 μ M (open circle) of MBP Ac1-9(4Tyr) following re-stimulation with varying numbers of splenocytes from AMK₃₅ mice expressing MBP. (C) IL-2 and IFN γ production from Tg4 TCL cells generated in the presence of 1 μ g/mL (dark circle) 0.1 μ M (triangle) or 0.01 μ M (open circle) of MBP Ac1-9(4Tyr), following re-stimulation with ionomycin and PMA at indicated concentrations. Data are shown as mean \pm SEM from a single experiment, representative of three independent experiments. Each experiment contained a minimum of three pooled Tg4 spleens (t-test, ** $p < 0.01$, *** $p < 0.001$).

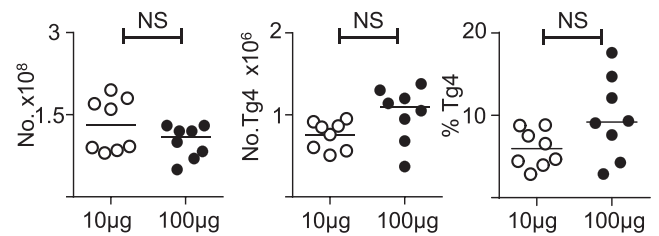


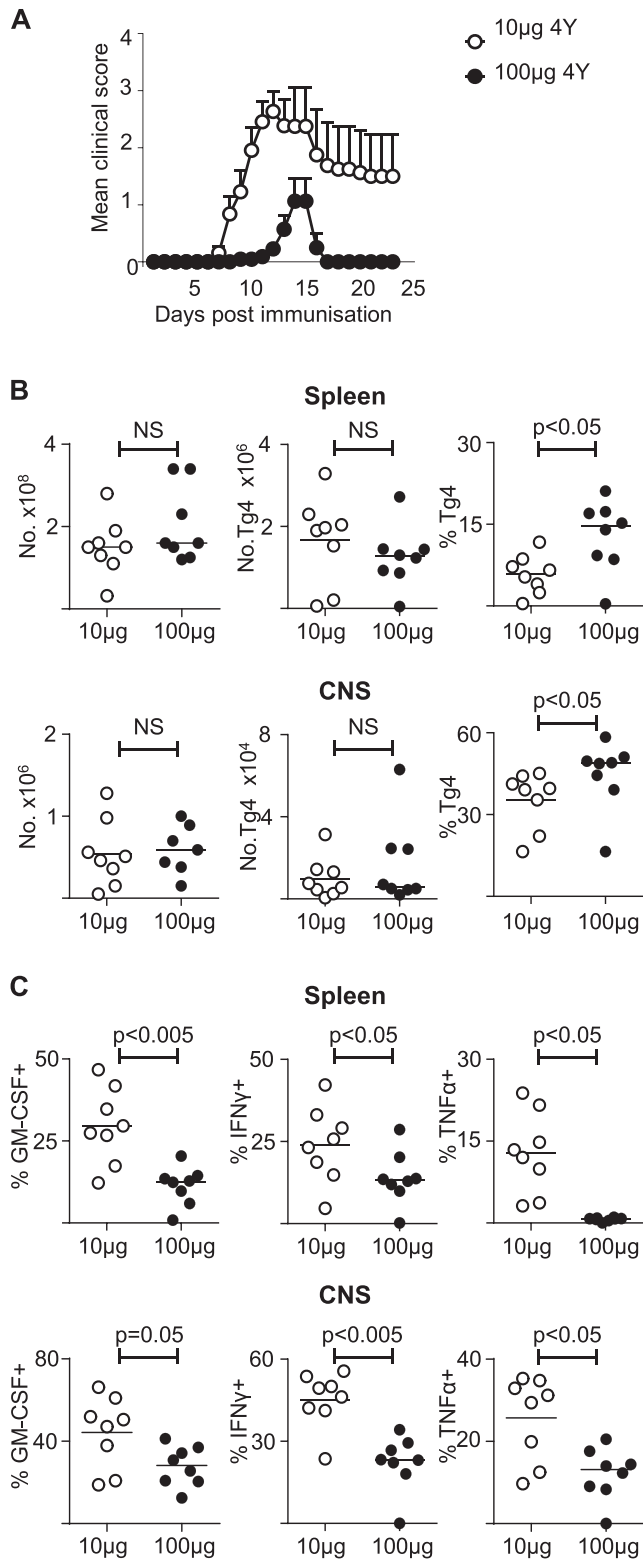
Figure 2. Immunisation with high dose of agonist in vivo does not result in deletion of agonist-responsive CD4⁺ T cells. C57BL/6x10.PL mice were seeded with CD4⁺CD45.1⁺ Tg4 cells and immunised the following day with either 10 or 100 μ g MBP Ac1-9(4Tyr) and CFA. Mice were sacrificed 6 days following immunisation. Total numbers of splenocytes, as well as numbers and frequencies of CD4⁺CD45.1⁺ Tg4 cells in the spleen at day 6 in mice immunised with either 10 μ g (open circles) or 100 μ g (dark circles) 4Tyr MBP as assessed by manual counting with a haemocytometer and by flow cytometry. Data are shown as scatter plots with the mean indicated by horizontal bar, from a single experiment representative of two independent experiments with $n = 6$ –8 mice per experimental group (Mann–Whitney U test; NS, no significant difference).

later were immunised with either 10 μ g or 100 μ g of MBP Ac1-9(4Tyr) in Complete Freund's Adjuvant (CFA). Six days later, the mice were sacrificed and FACS analysis was performed on single cell preparations of the spleen (Supporting Information Fig. 2). The total number of cells, number of Tg4 CD4⁺ T cells and the proportion of Tg4 cells in the CD4⁺ population were not significantly different between the two groups of mice (Fig. 2). These observations demonstrate that high dose immunisation of MBP in vivo does not lead to the deletion of MBP responsive CD4⁺ T cells.

Immunisation with high dose of MBP results in attenuation of EAE

In order to examine whether high dose immunisation with MBP could attenuate EAE, we immunised mice with either 10 μ g or 100 μ g of MBP Ac1-9(4Tyr) and then monitored the mice daily for motor neurological function. Mice immunised with 10 μ g MBP Ac1-9(4Tyr) developed a synchronous course of EAE whereas mice immunised with 100 μ g MBP Ac1-9(4Tyr) had a significantly lower incidence and severity of EAE (Fig. 3A). Eighteen of 22 mice developed EAE following immunisation with 10 μ g MBP Ac1-9(4Tyr) compared to only 5 of 22 mice immunised with 100 μ g MBP Ac1-9(4Tyr).

To examine whether this was due to a failure of the Tg4 cells to access the CNS following immunisation with 100 μ g MBP Ac1-9(4Tyr), mice in a subsequent experiment were sacrificed 12 days after immunisation. The total number of cells and number of Tg4.CD45.1 CD4⁺ cells were not significantly different in the spleen or CNS between the 2 groups (Fig. 3B). The proportion of Tg4 cells of all CD4⁺ T cells was significantly higher in both the spleen and CNS in mice immunised with 100 μ g MBP Ac1-9(4Tyr) (Fig. 3B, Supporting Information Fig. 3). Following overnight re-stimulation with 20 μ M MBP Ac1-9(4Lys), the production of cytokines by Tg4 cells was assessed in both groups.



In mice immunised with 100 µg MBP Ac1-9(4Tyr), the proportion of Tg4 cells from both the spleen and CNS expressing pro-inflammatory cytokines was significantly reduced (Fig. 3C).

Adapted T cells do not have a regulatory phenotype

A potential explanation for the adapted T cell phenotype is that high dose immunisation results in the development of T cells with a regulatory T cell phenotype. In order to examine this possibility, we assessed Foxp3 expression, which is a transcription factor widely used to identify regulatory T cells [7], within Tg4 cells at peak of disease. We found no differences in Foxp3 expression in the transferred Tg4 cells from mice immunised with 10 µg or 100 µg of MBP Ac1-9(4Tyr) (Fig. 4A). Furthermore, we found no evidence that in vivo adapted cells produced more IL-10 following overnight re-stimulation with 20 µM MBP Ac1-9(4Lys) (Fig. 4B).

Adapted T cells express higher levels of PD-1

In order to probe the mechanism of the adapted state, the cell surface expression of a panel of co-stimulatory and co-inhibitory molecules were examined on our three Tg4 TCL by flow cytometry. As shown in Fig. 5A, in vitro adapted T cells did not express altered levels of CD3 or TCR β but did express higher levels of PD-1, a molecule which is known to have an important inhibitory effect on T cell activation. The expression of PD-1 was then examined on Tg4 cells in mice immunised with either 10 µg or 100 µg MBP Ac1-9(4Tyr). The expression of PD-1 was significantly increased on Tg4 cells recovered from the CNS, but not the spleen of mice immunised with 100 µg MBP Ac1-9(4Tyr) at the peak of disease (Fig. 5B).

PD-1 deficient T cells can still acquire an adapted phenotype in vitro and in vivo

Given the clear association between T cells which had an impaired ability to respond to MBP agonist on re-stimulation and increased

Figure 3. Adapted T cells can access CNS but have significantly reduced pathogenic potential. C57BL/6xBL10.PL hosts were seeded with Tg4CD4⁺CD45.1⁺ T cells and 1 day later were immunised with CFA and 10 µg 4Tyr MBP or 100 µg MBP Ac1-9(4Tyr). (A) The disease course of mice immunised with either 10 µg MBP Ac1-9(4Tyr) (open circles, $n = 22$) or 100 µg MBP Ac1-9(4Tyr) (dark circles, $n = 22$) (Fisher's exact test, $p < 0.0005$). Differences in peak disease severity between the groups was analysed with Mann-Whitney U test, $p < 0.0001$. Data shown as mean \pm SEM, pooled from three independent experiments. (B) Mice were sacrificed 12 days following immunisation. Total numbers of cells, as well as numbers of Tg4 cells and frequencies of CD4⁺CD45.1⁺ cells which were Tg4, i.e. donor cells, are shown for the spleen and CNS. (C) Frequencies of splenic or CNS-infiltrating Tg4 cells producing GM-CSF, IFN- γ and TNF- α following overnight stimulation with 20 µM MBP Ac1-9(4Lys). Data are shown as scatter plots with the mean indicated by horizontal bar, from a single experiment representative of two independent experiments with $n = 6-8$ per experimental group (Mann-Whitney U test; NS, no significant difference).

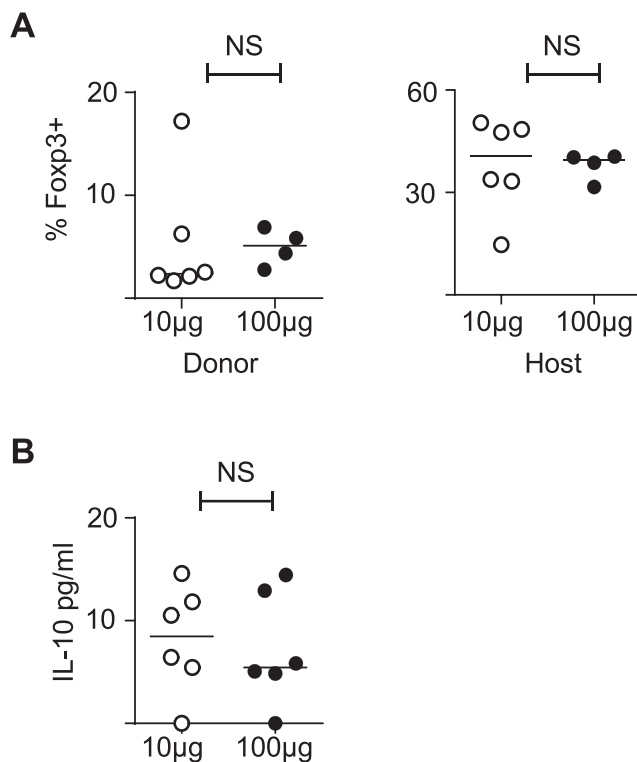


Figure 4. Adapted T cells do not have a regulatory T cell phenotype (A) C57BL/6xB10.PL hosts were seeded with Tg4 CD4⁺CD45.1⁺ T cells and 1 day later immunised with CFA and 10 µg MBP Ac1-9(4Tyr) or 100 µg MBP Ac1-9(4Tyr). Mice were sacrificed 12 days following immunisation. Proportions of Foxp3⁺ of CD4⁺CD45.1⁺ (Donor) and CD4⁺CD45.1⁻ (Host) cells in the mononuclear cell preparations from the CNS of mice immunised with 10 µg MBP Ac1-9(4Tyr) (open circles) or 100 µg MBP Ac1-9(4Tyr) (dark circles) were determined by flow cytometry. Data are representative of two independent experiments containing 4–6 mice per group (Mann–Whitney U test; NS, no significant difference). (B) Splenocytes of mice 12 days post immunisation with 10 µg MBP Ac1-9(4Tyr) (open circles) or 100 µg MBP Ac1-9(4Tyr) (dark circles) were re-stimulated with 20 µM MBP Ac1-9(4Lys) overnight and IL-10 concentrations were measured in the supernatants. Data are shown as scatter plots with the mean indicated by horizontal bar, representative of two independent experiments containing 4–6 mice per experimental group (Mann–Whitney U test; NS, no significant difference).

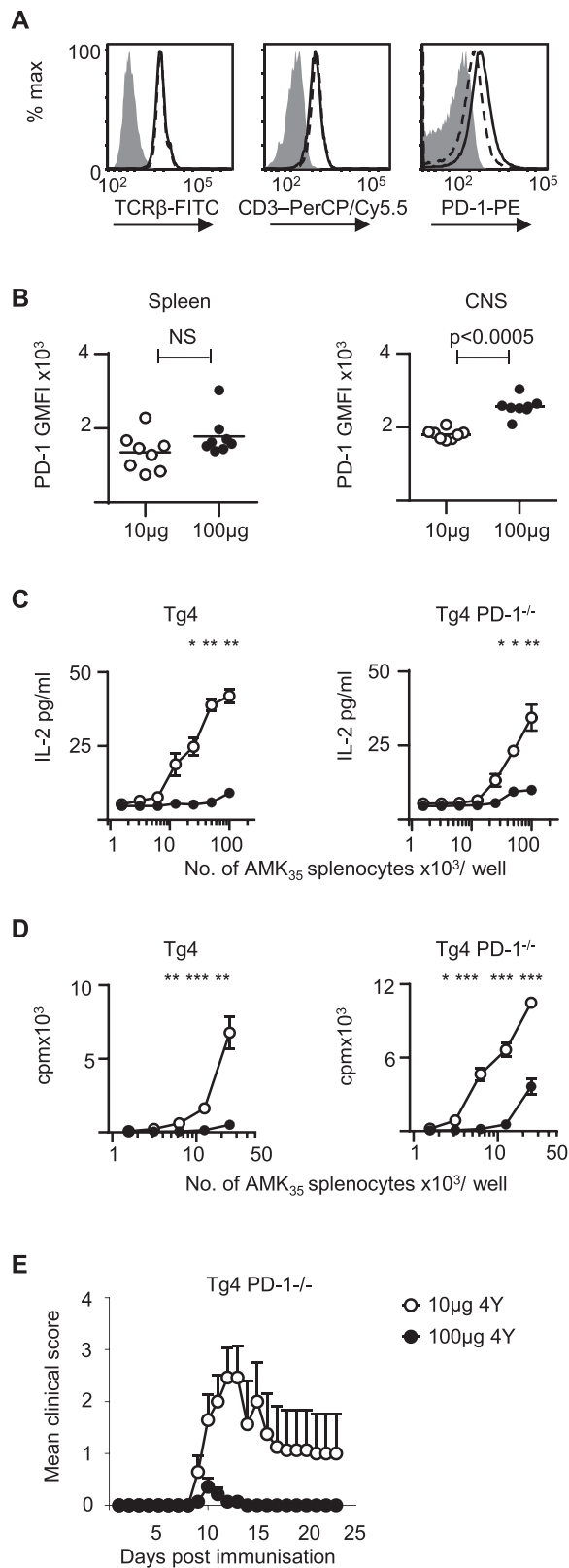
expression of PD-1, we next wanted to examine whether increased PD-1 expression was required to maintain the adapted T cell state. T cell lines were generated from Tg4 WT and Tg4.PD-1^{-/-} [20] splenocytes which were stimulated with either 1, 0.1 or 0.01 µM of MBP Ac1-9(4Tyr). The TCL generated from both Tg4 WT and Tg4.PD-1^{-/-} splenocytes initially treated with the high dose of MBP Ac1-9(4Tyr) displayed the typical adapted phenotype with reduced IL-2 production (Fig. 5C). A second, independent experiment found the same adapted phenotype in both Tg4 WT and Tg4.PD-1^{-/-} TCL when using thymidine incorporation rather than IL-2 as a readout of proliferation (Fig. 5D). To explore whether the loss of PD-1 altered the ability of Tg4 cells to be adapted in vivo, we seeded host mice with Tg4.PD-1^{-/-} CD4⁺ cells and immunised the mice with either 10 µg or 100 µg MBP Ac1-9(4Tyr). Mice immunised with high dose MBP Ac1-9(4Tyr) developed a significantly attenuated course of EAE which resembled that of

mice seeded with Tg4 WT CD4⁺ cells under the same experimental conditions (Fig. 5E, Fig. 3A). These experiments demonstrated that loss of PD-1 expression did not limit the ability of Tg4 CD4⁺ T cells to be adapted in vitro or in vivo.

Discussion

The induction of antigen-specific tolerance is one of the fundamental mechanisms of peripheral tolerance. The utilisation and/or mimicking of in vivo tolerance mechanisms is a promising strategy to achieve antigen-specific, targeted immunosuppression for immune-mediated pathologies such as autoimmune diseases, allergy, and allograft rejection [30]. Whilst deletion of autoreactive T cells is a known mechanism of peripheral tolerance [31], our study demonstrates that the administration of high dose agonist in conjunction with adjuvant does not invariably lead to wholesale loss of T cells which can respond to this antigen. Instead, we observed an expansion of T cells which had a greatly reduced ability to proliferate and produce pro-inflammatory cytokines.

Tolerance against autoantigens is most commonly observed upon administration or presentation in the absence of pro-inflammatory stimuli. However, high doses of antigen or chronic exposure to antigen, best studied in the context of viral infection and cancer, can result in a hyporesponsive T cell state even in the presence of immune stimuli that support immune responses at other levels of antigen exposure. In the context of autoimmune disease, molecular mimicry is one of the hypothesised mechanisms by which autopathogenic immune responses can be initiated [6]. It involves an initial peripheral infection to activate T cells which also recognise self-antigen due to TCR degeneracy; these then go on to cause an autoimmune response upon encounter of this self-antigen if not tolerised. One way of achieving tolerance in this setting would be a reduction of T cell trafficking to the site of self-antigen, in the case of this experimental set-up, the CNS. However, we found that the hyporesponsive, adapted T cells could still traffic to the CNS. Indeed, the Tg4 CD4⁺ T cells capable of responding to MBP were present in similar numbers in the CNS of asymptomatic mice immunised with high dose MBP as mice with EAE which had been administered a lower dose of MBP. In both groups, there were significant numbers of mononuclear cells in the CNS which were not Tg4 cells. Whilst the Tg4 CD4⁺ T cells are essential for initiating disease in B10.PL × C57BL/6 mice immunised with low dose MBP [32], non Tg4 immune cells are likely to play a role in propagating CNS pathology. This indicates that the CNS was exposed to a similar number of MBP responsive cells but the process of adaptation had rendered them unable to initiate autoimmune pathology. This process may be important in protecting the host from the development of an autopathogenic immune response when the immune system is exposed to autoantigens in an inflammatory milieu through trauma or infection. Epidemiological data supports this hypothesis since a traumatic event does not invariably precede the development of autoimmunity [33]. Whether our observations can be readily extrapolated to other



antigens beyond modified MBP and ultimately, to polyclonal T cell responses, remains to be clarified.

In recent years, it has been established that PD-1 is an important molecule in restraining T cell effector function following initial activation. The first evidence for the role of PD-1 in modulating T cell activation came from PD-1 deficient mice which developed multi-organ autoimmunity [34]. Interaction of PD-1 with its ligand PD-L1 or PD-L2 and downstream signalling results in the attenuation of the functional and proliferative capabilities of T cells, e.g. via repression of TCR signalling [35], induction of inhibitory genes [36], and reduction of T cell motility [37]. The therapeutic blockade of PD-1 has been a major breakthrough in the treatment of several types of cancer, facilitating a more effective cytotoxic T cell response [22, 25, 38]. On the other hand, enhancement of the PD-1/PDL-1 axis is considered a promising target in the context of autoimmune disease. A recent study from our group demonstrated that the effectiveness of peptide immunotherapy is reliant on persistent expression of PD-1 on tolerised T cells [20]. Data from the current study show that upregulated expression of PD-1 is maintained on hypo-responsive T cells which have been generated either in vitro or in vivo. However, using T cells which were deficient in PD-1, we were able to demonstrate that PD-1 expression is not required to develop a hypo-responsive state when high levels of autoantigen agonists are delivered alongside a powerful pro-inflammatory adjuvant. Why PD-1 expression is indispensable for the maintenance of a hypo-responsive state in Tg4 CD4⁺ cells tolerised by soluble peptide, but not in hypo-responsive T cells generated post peptide administration with CFA, remains unclear but may relate to the induction of an alternative

Figure 5. PD-1 expression is increased on adapted T cells generated in vitro and in vivo but is not required to maintain adapted state (A) Cell surface expression of CD3, TCRβ and PD-1 and isotype control staining (grey shaded area) on Tg4 TCL cells generated in the presence of 1 μg/mL (solid line) or 0.01 μg/mL (dashed line) of MBP Ac1-9(4Tyr). Cells were analysed by flow cytometry and gated on CD4⁺ live cells. Data are representative of four independent experiments, with each experiment containing a minimum of 3 pooled Tg4 spleens per experimental group. (B) C57BL/6xB10.PL hosts were seeded with Tg4CD4⁺CD45.1⁺ T cells and 1 day later were immunised with CFA and 10 μg MBP Ac1-9(4Tyr) (open circle) or 100 μg MBP Ac1-9(4Tyr) (dark circle). Mice were sacrificed 12 days following immunisation. PD-1 expression on CD4⁺CD45.1⁺ T cells from the spleen and CNS was analysed as mean fluorescence intensity (MFI). Data are shown as scatter plots with the mean indicated by horizontal bar, representative of two independent experiments containing 6–8 mice per experimental group (Mann–Whitney U test; NS, no significant difference). (C) IL-2 production by Tg4 (left panel) and PD-1^{-/-} Tg4 (right panel) TCL cells generated in the presence of 1 μg/mL (dark circle) or 0.01 μM (open circle) of MBP Ac1-9(4Tyr) following re-stimulation with varying numbers of splenocytes from AMK₃₅ mice expressing MBP (t-test, **p* < 0.05, ***p* < 0.01, ****p* < 0.001). (D) Proliferation of Tg4 (left panel) and PD-1^{-/-} Tg4 (right panel) TCL cells generated in the presence of 1 μg/mL (dark circle) or 0.01 μM (open circle) of MBP Ac1-9(4Tyr) following re-stimulation with varying numbers of splenocytes from AMK₃₅ mice expressing MBP, as measured by thymidine incorporation (t-test, **p* < 0.05, ***p* < 0.01, ****p* < 0.001). (E) C57BL/6xB10.PL mice were seeded with PD-1^{-/-} Tg4 CD4⁺ T cells and 1 day later immunised with either 10 μg (open circles) or 100 μg (dark circles) MBP Ac1-9(4Tyr) in CFA and disease course was monitored (Fisher's exact test, *p* < 0.01). Differences in peak disease severity between the groups were analysed with Mann–Whitney U test, *p* < 0.0005. Data are pooled from two independent experiments with a total of 14 mice per experimental group.

inhibitory pathway driven by the adjuvant [39]. A better understanding of the distinct hyporesponsive T cell states, their development, maintenance, and relevance in immune homeostasis and disease is required in order to optimise therapeutic approaches targeting T cell responsiveness [40].

A hallmark of regulatory T cells is unresponsiveness to antigen stimulation, so a plausible explanation for the persistence of hyporesponsive cells following high dose immunisation with MBP is the development of a regulatory T cell phenotype. However, we found no evidence that adapted T cells – although unresponsive to secondary antigen stimulation – acquired the expression of transcription factor Foxp3, a marker for thymus-derived as well as peripherally-induced regulatory T cells [7, 41, 42]. Likewise, no increase in production of IL-10, a potent anti-inflammatory cytokine produced by Foxp3⁺ as well as Foxp3⁻ T cells with regulatory function was observed in adapted T cells [7]. A limitation of our experimental approach was the failure to assess IL-10 production from Tg4 using intracellular cytokine approach as we employed in the assessment of pro-inflammatory cytokine production. The finding that adapted T cells in our experimental system did not acquire a regulatory T cell phenotype is consistent with other studies which have investigated the in vivo development of a hyporesponsive state in T cells post antigen exposure [43].

In conclusion, we show that a high dose of self-antigen agonist in the presence of adjuvant results in T cell tolerance, which follows initial T cell expansion and does not involve clonal deletion, autoantigen ignorance, or acquisition of a regulatory phenotype. Most strikingly, this in vivo adapted T cell phenotype is independent of PD-1, which stands in contrast with several other described forms of T cell unresponsiveness, including in the context of chronic viral infections and cancer. These insights into adapted T cell tolerance are important in the development of antigen-specific therapy for autoimmune diseases.

Materials and methods

Mice, antigens and tissue culture medium

B10.PL x C56BL/6, AMK₃₅, Tg4.CD45.1 and Tg4.CD90.1 mice were bred under specific pathogen-free conditions at the University of Edinburgh. All experiments had local ethical approval and were performed in accordance with UK legislation. Tg4 mice express a transgenic T cell receptor (TCR) recognizing the Ac1-9 peptide of MBP in association with I-A^u [27]. AMK₃₅ mice express the MBP Ac1-9 peptide covalently bound to all I-A^u major histocompatibility molecule (MHC) class II molecules [29]. The MBP Ac1-9(4Tyr) analog peptide was obtained from Cambridge Research Biochemicals (Cleveland, UK). Tissue culture medium (RPMI 1640 medium) was supplemented with 2 mM L-glutamine, 100 U/ml penicillin, 100 µg/ml streptomycin, and 5 × 10⁻⁵ M 2-ME (all from Invitrogen Life Technologies, Paisley, UK) and 10% FCS (Sigma-Aldrich, Dorset, UK).

Induction of active EAE

B10.PL x C57BL/6 (CD45.2) mice received 1 × 10⁶ Tg4.CD45.1 CD4⁺ T cells. One day later (day 0), mice received 10 µg or 100 µg of the MBP Ac1-9(4Tyr) peptide emulsified in CFA containing 50 µg of heat-killed *Mycobacterium tuberculosis* H37Ra (Sigma-Aldrich, Dorset, UK) at a total final volume of 50 µl injected s.c. into each hind leg. On the day of immunization and 48 hrs later, each mouse also received 200 ng of pertussis toxin (Health Protection Agency, Dorset, U.K.) in 0.5 mL PBS via i.p. injection. Clinical signs of EAE were assessed daily with the following scoring system: 0, no signs; 1, flaccid tail; 2, impaired righting reflex and/or gait; 3, partial hind limb paralysis; 4, total hind limb paralysis; 5, hind limb paralysis with partial front limb paralysis; 6, moribund or dead. In some experiments, the mice were sacrificed pre disease development on day 6 or at peak of disease at day 12 post immunisation.

Generation of Tg4 T cell lines, primary activation assays and recall assays

To study the primary activation of Tg4 CD4⁺ T cells, spleens from Tg4 mice were harvested, single cell preparation was performed and red blood cells were lysed using an ammonium chloride buffer (Sigma Aldrich, Dorset, UK). Varying numbers (as stated) of Tg4 splenocytes cells per well (flat bottomed, 96 well plates) were cultured with stated concentration of MBP Ac1-9(4Tyr). After 48 h, cell proliferation was assessed by the addition of [³H]thymidine (PerkinElmer, Cambridge, UK) at 0.5 µCi/well for the last 18 h of culture. [³H]Thymidine incorporation was measured using a scintillation β-counter (Wallac, Milton Keynes, UK). The results are expressed as mean counts per minute (c.p.m.) ± standard error of the mean (SEM). Tg4 CD4⁺ T cell production of cytokines (IL-2 and IFN-γ) was assessed in culture supernatants by ELISA using paired monoclonal antibodies and recombinant cytokine standards purchased from BD Biosciences (New Jersey, USA). GM-CSF was detected using Ready-SET-Go ELISA kits (eBioscience, San Diego, USA). IL-2 was measured in supernatants after 48 h of culture and IFN-γ and GM-CSF was measured after 72 h of culture.

Tg4 CD4⁺ T cell lines were generated by culturing Tg4 splenocytes with the stated concentration of MBP Ac1-9(4Tyr) for 48 h. Cells were plated out in 24-well plates at 3 × 10⁶/mL with 1.5 mL in each well. T cell blasts were then isolated using Ficoll-Paque 1.077 (GE Healthcare Life Sciences, Buckinghamshire, UK). The isolated cells were expanded for a further 4 days at 2 × 10⁶/mL in tissue culture media supplemented with 2.5% concanavalin A-activated rat spleen supernatant as a source of T cell growth factors in 24 well plates. To examine response to recall stimulation to MBP, 2 × 10⁴/well Tg4 CD4⁺ TCL were co-cultured in 96 well plates with the stated concentration of irradiated (30 Gy) AMK₃₅ splenocytes for 72 h. Response to a non TCR activation stimulus was examined by culturing 1 × 10⁵/well Tg4 TCL with the stated amount of ionomycin and PMA. Proliferation and cytokine production were assessed as described above.

Flow cytometry analysis

Cells were re-suspended in FACS buffer (PBS, 2% fetal calf serum, 0.01% sodium azide) (Sigma Aldrich, Dorset, U.K.). Mice with EAE were sacrificed by CO₂ asphyxiation, perfused with cold PBS and mononuclear cells were prepared from the brain and spinal cord as described previously [44]. Spinal cords were removed by intrathecal hydrostatic pressure. Brain and spinal cords were cut into small pieces and digested with 2.5 mg/mL collagenase (Worthington Biochemical) and 1 mg/mL deoxyribonuclease (Sigma-Aldrich) for 25 minutes at 37°C followed by mechanical disaggregation. Single cell suspensions were washed once in tissue culture medium. Mononuclear cells from the CNS were prepared from the interface of a 30:70% discontinuous Percoll gradient after centrifugation for 20 minutes at 850 × g. Cells were re-suspended in 1 mL tissue culture medium and cell numbers were manually determined using a cell counting chamber, with the addition of 0.4% Trypan Blue for exclusion of dead cells. Analysis of CNS mononuclear phenotype and function was performed by flow cytometry as described in relevant methods and results sections, and adhered to guidelines as described in Cossarizza *et al.* [45]. The number of Tg4 donor cells was calculated based on the percentage of CD45.1⁺ cells of live singlet cells as determined by flow cytometric analysis. Fc receptors were blocked with supernatant from the hybridoma 2.4G2. All antibodies used were from eBioscience, Hatfield, UK, except where stated; LIVE/DEAD fixable cell stain (Life Technologies), anti-CD4-PerCP, anti-CD4-AF700 (BD Pharmingen, Oxford, UK), anti-CD90.1-APC, anti-CD45.1-FITC, anti-TNF α -eFluor450, anti-IFN γ -FITC, anti-GM-CSF-PE and anti-Foxp3-PE (AbD Serotec, Kidlington, UK). For intracellular staining in response to peptide, cells were re-suspended at 1 × 10⁷/mL in the presence or absence of 20 μ M 4Lys MBP. After overnight culture, 1 μ l/mL of brefeldin A (e-bioscience, Hatfield, UK, 1000x stock) was added for the last four hours of culture. Cells were surface stained prior to processing for intracellular staining using appropriate buffers according to manufacturer's instructions (eBioscience for transcription factor staining or Becton Dickinson for cytokine staining). FACS data were collected using LSR Fortessa (BD Biosciences, New Jersey, USA) and analyzed using FlowJo software (Tree Star, Olten, Switzerland). For FACS analysis of CNS mononuclear cells, mice with EAE were sacrificed by CO₂ asphyxiation, perfused with cold PBS and mononuclear cells were prepared from brain and spinal cord as described previously [44]. IL-10 was measured in supernatants of splenocytes stimulated overnight with MBP using an IL-10 Ready-SET-Go ELISA (eBioscience, San Diego, USA).

Statistical analysis

Statistical analysis of results was performed using the Mann-Whitney U test, the two tailed Student's *t*-test and Fischer's exact test as appropriate. Cytokine concentrations are presented as mean concentration \pm SEM. Significance was set at *p* < 0.05.

Acknowledgements: R.J.M. was supported by a Wellcome Trust Intermediate Clinical Fellowship.

Conflict of interest: The authors declare no commercial or financial conflict of interest.

References

- Walker, L. S. and Abbas, A. K., The enemy within: keeping self-reactive T cells at bay in the periphery. *Nat. Rev. Immunol.* 2002. 2: 11–19.
- Koch-Henriksen, N. and Sorensen, P. S., The changing demographic pattern of multiple sclerosis epidemiology. *Lancet Neurol.* 2010. 9: 520–532.
- You, W. P. and Henneberg, M., Type 1 diabetes prevalence increasing globally and regionally: the role of natural selection and life expectancy at birth. *BMJ Open Diabetes Res. Care* 2016. 4: e000161.
- Xing, Y. and Hogquist, K. A., T-cell tolerance: central and peripheral. *Cold Spring Harb. Perspect. Biol.* 2012. 4.
- Hogquist, K. A., Baldwin, T. A. and Jameson, S. C., Central tolerance: learning self-control in the thymus. *Nat. Rev. Immunol.* 2005. 5: 772–782.
- Ryan, K. R., Patel, S. D., Stephens, L. A. and Anderton, S. M., Death, adaptation and regulation: the three pillars of immune tolerance restrict the risk of autoimmune disease caused by molecular mimicry. *J. Autoimmun.* 2007. 29: 262–271.
- Mellanby, R. J., Thomas, D. C. and Lamb, J., Role of regulatory T-cells in autoimmunity. *Clin. Sci. (Lond.)* 2009. 116: 639–649.
- Choi, S. and Schwartz, R. H., Molecular mechanisms for adaptive tolerance and other T cell anergy models. *Semin. Immunol.* 2007. 19: 140–152.
- Fox, B. S., Quill, H., Carlson, L. and Schwartz, R. H., Quantitative analysis of the T cell response to antigen and planar membranes containing purified Ia molecules. *J. Immunol.* 1987. 138: 3367–3374.
- Boussiotis, V. A., Freeman, G. J., Gray, G., Gribben, J. and Nadler, L. M., B7 but not intercellular adhesion molecule-1 costimulation prevents the induction of human alloantigen-specific tolerance. *J. Exp. Med.* 1993. 178: 1753–1763.
- Heissmeyer, V., Macian, F., Im, S. H., Varma, R., Feske, S., Venuprasad, K., Gu, H. et al., Calcineurin imposes T cell unresponsiveness through targeted proteolysis of signaling proteins. *Nat. Immunol.* 2004. 5: 255–265.
- Chiodetti, L., Choi, S., Barber, D. L. and Schwartz, R. H., Adaptive tolerance and clonal anergy are distinct biochemical states. *J. Immunol.* 2006. 176: 2279–2291.
- Rammensee, H. G., Kroschewski, R. and Frangoulis, B., Clonal anergy induced in mature V beta 6+ T lymphocytes on immunizing Mls-1b mice with Mls-1a expressing cells. *Nature* 1989. 339: 541–544.
- Rellahan, B. L., Jones, L. A., Kruisbeek, A. M., Fry, A. M. and Matis, L. A., In vivo induction of anergy in peripheral V beta 8+ T cells by staphylococcal enterotoxin B. *J. Exp. Med.* 1990. 172: 1091–1100.
- Kawabe, Y. and Ochi, A., Selective anergy of V beta 8+, CD4⁺ T cells in Staphylococcus enterotoxin B-primed mice. *J. Exp. Med.* 1990. 172: 1065–1070.
- Tanchot, C., Barber, D. L., Chiodetti, L. and Schwartz, R. H., Adaptive tolerance of CD4⁺ T cells in vivo: multiple thresholds in response to a constant level of antigen presentation. *J. Immunol.* 2001. 167: 2030–2039.

- 17 Rocha, B. and von Boehmer, H., Peripheral selection of the T cell repertoire. *Science* 1991. 251: 1225–1228.
- 18 Lanoue, A., Bona, C., von Boehmer, H. and Sarukhan, A., Conditions that induce tolerance in mature CD4⁺ T cells. *J. Exp. Med.* 1997. 185: 405–414.
- 19 Adler, A. J., Huang, C. T., Yochum, G. S., Marsh, D. W. and Pardoll, D. M., In vivo CD4⁺ T cell tolerance induction versus priming is independent of the rate and number of cell divisions. *J. Immunol.* 2000. 164: 649–655.
- 20 McPherson, R. C., Konkol, J. E., Prendergast, C. T., Thomson, J. P., Ottaviano, R., Leech, M. D., Kay, O. et al., Epigenetic modification of the PD-1 (Pdc1) promoter in effector CD4(+) T cells tolerized by peptide immunotherapy. *eLife*. 2014. 3: e03416.
- 21 Agata, Y., Kawasaki, A., Nishimura, H., Ishida, Y., Tsubata, T., Yagita, H. and Honjo, T., Expression of the PD-1 antigen on the surface of stimulated mouse T and B lymphocytes. *Int. Immunol.* 1996. 8: 765–772.
- 22 Nishimura, H., Nose, M., Hiai, H., Minato, N. and Honjo, T., Development of lupus-like autoimmune diseases by disruption of the PD-1 gene encoding an ITIM motif-carrying immunoreceptor. *Immunity* 1999. 11: 141–151.
- 23 Freeman, G. J., Long, A. J., Iwai, Y., Bourque, K., Chernova, T., Nishimura, H., Fitz, L. J. et al., Engagement of the PD-1 immunoinhibitory receptor by a novel B7 family member leads to negative regulation of lymphocyte activation. *J. Exp. Med.* 2000. 192: 1027–1034.
- 24 Gong, J., Chehrizi-Raffle, A., Reddi, S. and Salgia, R., Development of PD-1 and PD-L1 inhibitors as a form of cancer immunotherapy: a comprehensive review of registration trials and future considerations. *J. Immunother. Cancer* 2018. 6: 8.
- 25 Chinai, J. M., Janakiram, M., Chen, F., Chen, W., Kaplan, M. and Zang, X., New immunotherapies targeting the PD-1 pathway. *Trends Pharmacol. Sci.* 2015. 36: 587–595.
- 26 Dolen, Y. and Esendagli, G., Myeloid leukemia cells with a B7-2(+) subpopulation provoke Th-cell responses and become immuno-suppressive through the modulation of B7 ligands. *Eur. J. Immunol.* 2013. 43: 747–757.
- 27 Liu, G. Y., Fairchild, P. J., Smith, R. M., Prowle, J. R., Kioussis, D. and Wraith, D. C., Low avidity recognition of self-antigen by T cells permits escape from central tolerance. *Immunity* 1995. 3: 407–415.
- 28 Anderton, S. M., Radu, C. G., Lowrey, P. A., Ward, E. S. and Wraith, D. C., Negative selection during the peripheral immune response to antigen. *J. Exp. Med.* 2001. 193: 1–11.
- 29 Kurschus, F. C., Oelert, T., Liliensiek, B., Buchmann, P., Wraith, D. C., Hammerling, G. J. and Arnold, B., Experimental autoimmune encephalomyelitis in mice expressing the autoantigen MBP 1–10 covalently bound to the MHC class II molecule I-Au. *Int. Immunol.* 2006. 18: 151–162.
- 30 Pearson, R. M., Casey, L. M., Hughes, K. R., Miller, S. D. and Shea, L. D., In vivo reprogramming of immune cells: technologies for induction of antigen-specific tolerance. *Adv. Drug. Deliv. Rev.* 2017. 114: 240–255.
- 31 Gronski, M. A. and Weinem, M., Death pathways in T cell homeostasis and their role in autoimmune diabetes. *Rev. Diabet. Stud.* 2006. 3: 88–95.
- 32 Ryan, K. R., McCue, D. and Anderton, S. M., Fas-mediated death and sensory adaptation limit the pathogenic potential of autoreactive T cells after strong antigenic stimulation. *J. Leukoc. Biol.* 2005. 78: 43–50.
- 33 Scarpa, R., Del Puente, A., di Girolamo, C., della Valle, G., Lubrano, E. and Oriente, P., Interplay between environmental factors, articular involvement, and HLA-B27 in patients with psoriatic arthritis. *Ann. Rheum. Dis.* 1992. 51: 78–79.
- 34 Nishimura, H., Agata, Y., Kawasaki, A., Sato, M., Imamura, S., Minato, N., Yagita, H. et al., Developmentally regulated expression of the PD-1 protein on the surface of double-negative (CD4-CD8-) thymocytes. *Int. Immunol.* 1996. 8: 773–780.
- 35 Keir, M. E., Butte, M. J., Freeman, G. J. and Sharpe, A. H., PD-1 and its ligands in tolerance and immunity. *Annu. Rev. Immunol.* 2008. 26: 677–704.
- 36 Quigley, M., Pereyra, F., Nilsson, B., Porichis, F., Fonseca, C., Eichbaum, Q., Julg, B. et al., Transcriptional analysis of HIV-specific CD8⁺ T cells shows that PD-1 inhibits T cell function by upregulating BATF. *Nat. Med.* 2010. 16: 1147–1151.
- 37 Zinselmeyer, B. H., Heydari, S., Sacristan, C., Nayak, D., Cammer, M., Herz, J., Cheng, X. et al., PD-1 promotes immune exhaustion by inducing antiviral T cell motility paralysis. *J. Exp. Med.* 2013. 210: 757–774.
- 38 Romano, E. and Romero, P., The therapeutic promise of disrupting the PD-1/PD-L1 immune checkpoint in cancer: unleashing the CD8 T cell mediated anti-tumor activity results in significant, unprecedented clinical efficacy in various solid tumors. *J. Immunother. Cancer* 2015. 3: 15.
- 39 Wells, A. D., New insights into the molecular basis of T cell anergy: energy factors, avoidance sensors, and epigenetic imprinting. *J. Immunol.* 2009. 182: 7331–7341.
- 40 Schietinger, A. and Greenberg, P. D., Tolerance and exhaustion: defining mechanisms of T cell dysfunction. *Trends Immunol.* 2014. 35: 51–60.
- 41 Abbas, A. K., Benoist, C., Bluestone, J. A., Campbell, D. J., Ghosh, S., Hori, S., Jiang, S. et al., Regulatory T cells: recommendations to simplify the nomenclature. *Nat. Immunol.* 2013. 14: 307–308.
- 42 Fontenot, J. D., Gavin, M. A. and Rudensky, A. Y., Foxp3 programs the development and function of CD4⁺CD25⁺ regulatory T cells. *Nat. Immunol.* 2003. 4: 330–336.
- 43 Steinert, E. M., Schwartz, R. H. and Singh, N. J., At low precursor frequencies, the T-cell response to chronic self-antigen results in anergy without deletion. *Eur. J. Immunol.* 2012. 42: 2875–2880.
- 44 O'Connor, R. A., Prendergast, C. T., Sabatos, C. A., Lau, C. W., Leech, M. D., Wraith, D. C. and Anderton, S. M., Cutting edge: Th1 cells facilitate the entry of Th17 cells to the central nervous system during experimental autoimmune encephalomyelitis. *J. Immunol.* 2008. 181: 3750–3754.
- 45 Cossarizza, A., Chang, H. D., Radbruch, A., Akdis, M., Andra, I., Annunziato, F., Bacher, P. et al., Guidelines for the use of flow cytometry and cell sorting in immunological studies. *Eur. J. Immunol.* 2017. 47: 1584–1797.

Abbreviations: CFA: Complete Freund's Adjuvant · CNS: central nervous system · EAE: experimental autoimmune encephalomyelitis · IL-: interleukin · Lys: lysine · MBP: myelin basic protein · PD-1: programmed cell death protein 1 · PMA: phorbol myristate acetate · TCL: T cell line · TCR: T cell receptor · Tyr: tyrosine

Full correspondence: Prof. Richard J. Mellanby, The Royal (Dick) School of Veterinary Studies and The Roslin Institute, Division of Veterinary Clinical Studies, The University of Edinburgh, Hospital for Small Animals, Easter Bush Veterinary Centre, Roslin, Midlothian, UK e-mail: Richard.Mellanby@ed.ac.uk

Received: 16/8/2018

Revised: 24/10/2018

Accepted: 26/11/2018

Accepted article online: 28/11/2018