

# Reviews in Endocrine and Metabolic Disorders

## From microbiota toward gastro-enteropancreatic neuroendocrine neoplasms: are we on the highway to hell?

--Manuscript Draft--

<b>Manuscript Number:</b>	REMD-D-20-00062R1	
<b>Full Title:</b>	From microbiota toward gastro-enteropancreatic neuroendocrine neoplasms: are we on the highway to hell?	
<b>Article Type:</b>	Review Article (invited)	
<b>Corresponding Author:</b>	Giovanni Vitale, MD University of Milano - Istituto Auxologico Italiano IRCCS Cusano Milanino (MI), ITALY	
<b>Corresponding Author Secondary Information:</b>		
<b>Corresponding Author's Institution:</b>	University of Milano - Istituto Auxologico Italiano IRCCS	
<b>Corresponding Author's Secondary Institution:</b>		
<b>First Author:</b>	Giovanni Vitale, MD	
<b>First Author Secondary Information:</b>		
<b>Order of Authors:</b>	Giovanni Vitale, MD	
	Alessandra Dicitore	
	Luigi Barrea	
	Emilia Sbardella	
	Paola Razzore	
	Severo Campione	
	Antongiulio Faggiano	
	Annamaria Colao	
<b>Order of Authors Secondary Information:</b>		
<b>Funding Information:</b>	Ministero dell'Istruzione, dell'Università e della Ricerca (PRIN 2017Z3N3YC)	Not applicable

**Cover Letter**

Milan, 28<sup>th</sup> August 2020

Dear Editor,

please find enclosed our revised manuscript entitled: “From microbiota toward gastroenteropancreatic neuroendocrine neoplasms: are we on the highway to hell?” – Manuscript ID: REMD-D-20-00062.

We have mostly appreciated the comments of reviewer, and we have tried to follow his/her helpful suggestions in order to ameliorate the manuscript.

Changes are incorporated in the text and highlighted in yellow. Below you can find our point-by-point responses to the useful issues raised by the referee.

We hope now that this revised version of the manuscript can encounter the publication priority of your prestigious journal.

Thank you again for your kind consideration.

Best Regards,

Giovanni Vitale

## Detailed Response to Reviewer

This is an important paper that addresses a problematic point on how microbiota may interplay with the genesis and development of gastroenteropancreatic tumors. The manuscript is dense and sometimes difficult to follow to the non expert readers but it is comprehensive and well presented. The conclusions are clear, the literature perfectly reviewed and the references are well balanced.

There are some technical problems to solve:

The manuscript is full of abbreviations and acronyms, and that is unavoidable on a technical paper. to reduce that when an abbreviation be used less than five times write it in full or in full plus the acronym for example "ulcerative colitis" that can be also "ulcerative colitis (UC)".

**Answer:** We thank the reviewer for these suggestions. We have revised the manuscript accordingly. In addition, in the text we have reported for genes the name indicated by GeneCards database.

After the abstract, a complete list with the abbreviations and acronyms in full shall be displayed.

**Answer:** We have included a list of acronyms and related full forms used in the text and figures.

The ORCID number of each author must be displayed.

**Answer:** The ORCID number of each author has been included.

In the REFERENCES, in some of them the titles wrongly displayed in capitals, for example: 2,3,4 and so on. They should be as REFERENCES: 8, 12, 24 and so on. Ckeck to include find papers line in 13.

**Answer:** We thank the reviewer for these suggestions. We have revised the references accordingly.

In FIGURE 5, the long legend can be changed because the previous table with abbreviations.

**Answer:** The legend of figure 5 has been changed.

Please check the text for typos like 2nd page line 4 Bateroides, point 3 title pylori is no in capitals

**Answer:** We thank the reviewer for this comment. Text has been carefully revised in order to correct typing errors. The name “Bacteroidetes phyla” is correct.

[Click here to view linked References](#)

# From microbiota toward gastro-enteropancreatic neuroendocrine neoplasms: are we on the highway to hell?

Giovanni Vitale<sup>1,2</sup>, Alessandra Dicitore<sup>2</sup>, Luigi Barrea<sup>3</sup>, Emilia Sbardella<sup>4</sup>, Paola Razzore<sup>5</sup>, Severo Campione<sup>6</sup>, Antongiulio Faggiano<sup>4</sup>, Annamaria Colao<sup>3</sup>, on behalf of NIKE

<sup>1</sup>Istituto Auxologico Italiano IRCCS, Laboratory of Geriatric and Oncologic Neuroendocrinology Research, Cusano Milanino (MI), Italy.

<sup>2</sup>Department of Clinical Sciences and Community Health (DISCCO), University of Milan, Milan, Italy

<sup>3</sup>Department of Clinical Medicine and Surgery, University of Naples Federico II, Naples, Italy

<sup>4</sup>Department of Experimental Medicine, Sapienza University of Rome, Rome, Italy

<sup>5</sup>Endocrinology Unit, Mauriziano Hospital, Turin, Italy

<sup>6</sup>Pathology Department, Cardarelli Hospital, Napoli, Italy

**Corresponding author:** Giovanni Vitale; Email: [giovanni.vitale@unimi.it](mailto:giovanni.vitale@unimi.it)

**Short title:** microbiota and gastroenteropancreatic neuroendocrine neoplasms

**ORCID ID:** Giovanni Vitale (0000-0003-2478-683X), Alessandra Dicitore (0000-0003-0887-5242), Luigi Barrea (0000-0001-9054-456X), Emilia Sbardella (0000-0002-2220-9783), Paola Razzore (0000-0001-9086-6614), Severo Campione (0000-0001-8414-8333), Antongiulio Faggiano (0000-0002-9324-3946), Annamaria Colao (0000-0003-4049-2559)

## Abstract

Gut microbiota is represented by different microorganisms that colonize the intestinal tract, mostly the large intestine, such as bacteria, fungi, archaea and viruses. The gut microbial balance has a key role in several functions. It modulates the host's metabolism, maintains the gut barrier integrity, participates in the xenobiotics and drug metabolism, and acts as protection against gastro-intestinal pathogens through the host's immune system modulation. The impaired gut microbiota, called dysbiosis, may be the result of an imbalance in this equilibrium and is linked with different diseases, including cancer.

While most of the studies have focused on the association between microbiota and gastrointestinal adenocarcinomas, very little is known about gastroenteropancreatic (GEP) neuroendocrine neoplasms (NENs). In this review, we provide an overview concerning the complex interplay between gut microbiota and GEP NENs, focusing on the potential role in tumorigenesis and progression in these tumors.

**Key words:** Neuroendocrine tumors, microbiota, inflammation, tumor microenvironment, cytokines

## Acronyms adopted in the text and figures:

1  
2 A-CAG: type A chronic atrophic gastritis; ATM: Ataxia-Telangiectasia Mutated protein kinase;  
3  
4 CagA: Cytotoxin-associated gene A protein; CD: Crohn's disease; CDK: cyclin-dependent kinase;  
5  
6  
7 CDX: Homeobox protein CDX-2; c-MET: tyrosine-protein kinase Met; COX: Cyclooxygenase; Cyc:  
8  
9 Cyclin; DLL: Delta-like ligand; ECL: enterochromaffin-like; EGFR: epidermal growth factor  
10  
11 receptor; ERK: Extracellular signal-regulated kinases; F: Factors released by HP; FOXO: Forkhead  
12  
13 box O; FZD7: Frizzled-7; GEP: gastroenteropancreatic; GF: growth factor; gp30: G protein-coupled  
14  
15 receptor 30; GSK3: Glycogen Synthase Kinase 3; HP: helicobacter pylori; IBD: inflammatory bowel  
16  
17 disease; IL-6: Interleukin-6; MEK: Mitogen-activated protein kinase kinase; mTORC-1: mammalian  
18  
19 target of rapamycin complex 1; NBS1/NBN: Nibrin; NENs: neuroendocrine neoplasms; NICD/CSL:  
20  
21 Notch intracellular domain/CBF1 Suppressor of Hairless Lag1; Notch: Neurogenic locus notch  
22  
23 homolog protein; OipA: Outer inflammatory protein A; PI3k: Phosphatidylinositol-3-Kinase; PTEN:  
24  
25 Phosphatase and tensin homolog; Raf: Rapidly Accelerated Fibrosarcoma; RAS: Rat Sarcoma; Rb:  
26  
27 Retinoblastoma protein; RNS: Reactive Nitrogen Species, ROS: reactive oxygen species; RTKs:  
28  
29 receptor tyrosine kinases; RUNX3: Runt-related transcription factor 3; SHP2: Src homology region  
30  
31 2 (SH2)-containing protein tyrosine phosphatase 2; SMAD: Small Mother Against Decapentaplegic;  
32  
33 STAT: Signal Transducer and Activator of Transcription; TFF1: Trefoil Factor 1; TGF- $\beta$ :  
34  
35 transforming growth factor-beta; TGFR: Trasforming Growth Factor Receptor; TIVSS: Type IV  
36  
37 secretion system; TSC2: Tuberous Sclerosis Complex 2; VacA: Vacuolating cytotoxin A; VEGFR:  
38  
39 Vascular Endothelial Growth Factor Receptor; WNT: Wingless-related integration site.  
40  
41  
42  
43  
44  
45  
46  
47  
48  
49  
50  
51  
52  
53  
54  
55  
56  
57  
58  
59  
60  
61  
62  
63  
64  
65

# 1 Introduction

1  
2  
3 In the recent years, several studies have reported the central role of gut microbiota as key determinants  
4  
5 of numerous pathologic conditions, including cancer [1-5]. Gut microbiota is represented by different  
6  
7 microorganisms that colonize the intestinal tract, mostly the large intestine, such as bacteria, fungi,  
8  
9 archaea and viruses [6]. In particular, *Firmicutes* and *Bacteroidetes phyla* are the highly represented  
10  
11 ones [7]. Several bacterial species are involved in carcinogenesis. Elevated levels of DNA of  
12  
13 *Fusobacterium nucleatum* have been detected in tumor cells of colorectal adenoma and cancer [8, 9].  
14  
15 In contrast, probiotic bacterium species, including *Bifidobacterium* and *Lactobacillus* genera, may  
16  
17 exert a protective impact against cancer [10].  
18  
19  
20  
21

22 The gut microbial balance has a key role in several functions. Indeed, it modulates the host's  
23  
24 metabolism, maintains the gut barrier integrity, participates in the xenobiotics and drug metabolism,  
25  
26 and acts as protection against gastro-intestinal pathogens through the host's immune system  
27  
28 modulation [11-13]. The impaired gut microbiota, called dysbiosis, may be the result of an imbalance  
29  
30 in this equilibrium and is linked with the development of tumors [14, 5]. Gut microbiota can interact  
31  
32 with the tumor microenvironment, influencing the tumor growth and progression [15, 16]. On the  
33  
34 contrary, gut microbiota can act in the detoxification of dietary components and reduction of chronic  
35  
36 inflammation [17]. Through this complex crosstalk the gut microbiota, depending on its own  
37  
38 composition, may affect the cancer genesis and development, either in a positive or in a negative way.  
39  
40  
41  
42  
43

44 In this context, the gut microbiota can contribute to carcinogenesis through *alteration of the balance*  
45  
46 *of host cell proliferation and death* (figure 1 and 2), and the *modulation of immune system function*  
47  
48 (figure 3) [17].  
49  
50

51 Gut microorganisms can alter the *resistance to cell death and proliferative signalling of host cells*,  
52  
53 by affecting genomic stability, damaging the DNA, and indirectly through a change in indigenous  
54  
55 microbiota [18, 19]. These mechanisms can contribute to carcinogenesis through the increase in  
56  
57 mutational events (figure 1). An example is provided by colibactin, a molecule expressed by  
58  
59 *Escherichia coli* [20] and *Enterobacteriaceae* [21], associated with colorectal carcinogenesis [22, 23].  
60  
61  
62  
63  
64  
65



1 This molecule causes DNA damage and mutations directly or *via* production of high levels of reactive  
2 oxygen species [18, 24]. Similarly, in colonic epithelial cells, the Bacteroides fragilis toxin, through  
3 the over production of reactive oxygen and nitrogen species, causes indirectly DNA damage, leading  
4 to cell death or cancer-enabling mutations (figure 1) [9, 24].  
5  
6

7  
8  
9 Several microorganisms have proteins that engage host pathways involved in carcinogenesis, such as  
10 Wnt/ $\beta$ -catenin pathway (figure 2) [25]. The Wnt/ $\beta$ -catenin pathway regulates different cell  
11 behaviours [26, 27], such as axis formation during development [28], maintenance of stem cell in  
12 adulthood [29], and in tissue regeneration [30]. In the gastrointestinal tract the Wnt pathway maintains  
13 the self-renewal capacity of epithelial stem cells and aberrant activation of this pathway may lead to  
14 cancer [31]. Therefore, the barrier maintenance between host and microbe represents a critical point  
15 in the development of some tumors [32-39].  
16  
17  
18  
19  
20  
21  
22  
23  
24

25  
26 When the barriers are breached, microbes can act on immune responses leading to *activation pro-*  
27 *inflammatory or immunosuppressive pathway* (figure 3). Interestingly, the microbial dysbiosis may  
28 contribute to both cancer pathogenesis and progression [13, 40]. In fact, several inflammatory factors  
29 such as pro-inflammatory cytokines and chemokines, reactive oxygen and nitrogen species, are  
30 associated to growth and spread of the cancer (figure 3). Recognition of microbial components,  
31 through Toll-like receptors, can activate downstream signalling pathways, such as NF- $\kappa$ B, which  
32 leads to the production of proinflammatory factors (figure 3) [41]. In addition, the activation of innate  
33 immune system due to the breached of gut barriers, leads to adaptive immune responses modulated  
34 by several cytokines and STAT3 activation, all associated to cancer progression (figure 3) [42-48].  
35  
36  
37  
38  
39  
40  
41  
42  
43  
44  
45  
46  
47  
48  
49  
50  
51  
52  
53  
54  
55  
56  
57  
58  
59  
60  
61  
62  
63  
64  
65

66 While most of the studies have focused on the association between microbiota and gastrointestinal  
67 adenocarcinomas, very little is known about gastroenteropancreatic (GEP) neuroendocrine neoplasms  
68 (NENs). In this review, we provide an overview concerning the complex interplay between gut  
69 microbiota and GEP NENs, focusing on the potential role in tumorigenesis and progression of these  
70 tumors.

## 2 *Helicobacter pylori* (HP) and NENs: preclinical and clinical studies

1  
2  
3 HP is a gram-negative bacterium that infects human beings colonizing gastric mucosa and thus  
4  
5 eliciting chronic gastritis [49]. This process can progress within years and decades to chronic atrophic  
6  
7 gastritis, that is characterized by a loss of appropriate glands, either in form of lamina propria fibrosis  
8  
9 or glandular metaplasia. This condition appears to be a major cause of gastric adenocarcinoma [50-  
10  
11 53]. In 1994 the World Health Organization and International Agency for Research on Cancer  
12  
13 consensus group reported that epidemiologic and histologic evidences were sufficient to consider HP  
14  
15 as a definite carcinogen [54, 55]. Gastric precancerous cascade is determined by both inflammatory  
16  
17 process and DNA damage in cells infected by HP (figure 1).  
18  
19  
20  
21  
22  
23

24 Gastric NENs, also defined gastric carcinoids, are rare tumors of the stomach that arise from the  
25  
26 enterochromaffin-like (ECL) cells [56]. Several evidences suggested a potential carcinogenic role for  
27  
28 HP in NENs.  
29  
30

31 There are three types of gastric NENs, classified according to their histology and malignant potential.  
32  
33 A majority are defined as *type I* that are associated to chronic atrophic gastritis, either autoimmune-  
34  
35 driven or as a consequence of HP infection, and *type II*, associated to gastrinoma in patients with  
36  
37 Multiple Endocrine Neoplasia Syndromes type 1 syndrome. These first two types are tumors that  
38  
39 develop secondary to high gastrin levels. The majority of types I and II gastric carcinoids are small  
40  
41 (1-2 cm), multiple, and mainly confined to the gastric mucosa/submucosa layers. These lesions  
42  
43 generally have an indolent course associated with low metastatic potential. On the contrary, *type*  
44  
45 *III* gastric carcinoids are solitary and large (>2cm) tumors, with no known correlation to gastrin  
46  
47 production, that infiltrate the muscular layers and are related with the development of local and distant  
48  
49 metastases [57, 58].  
50  
51  
52  
53  
54  
55

56 A longstanding HP infection was shown to be associated with chronic atrophic gastritis [59] and  
57  
58 abnormalities in the gastric secretion. Chronic gastritis due to HP has been considered as a risk factor  
59  
60  
61  
62  
63  
64  
65

1  
2 for the development of gastric adenocarcinoma [59]. However, few studies showed that HP infection  
3 induces formation of carcinoids of the stomach in animals and humans [58, 60, 61].  
4

5  
6 In 1999 Hirayama and Colleagues [60] showed that long-term colonization by HP is a crucial risk  
7 factor for the development of gastric adenocarcinoma and carcinoid in a Mongolian gerbil model.  
8

9  
10 Kagawa **et al.** followed the histological changes of HP-infected stomachs of Mongolian gerbils  
11 compared to uninfected animals for 24 months and reported that HP infection can cause ECL-like  
12 cell tumors due to hypergastrinemia [62]. **Interestingly,** HP eradication prevented the occurrence of  
13 gastric carcinoid in the Mongolian gerbil stomach [63].  
14  
15  
16  
17  
18  
19  
20

21  
22 In humans, a population-based case-control study, comparing 1,138,390 cancer cases with 100,000  
23 matched individuals without cancer, showed that subjects with chronic atrophic gastritis and  
24 pernicious anemia have a significantly increased risk of type I gastric carcinoids (odds ratio, 11.43;  
25 95% CI 8.90–14.69) [64].  
26  
27  
28  
29  
30

31  
32 Solcia et al. showed a series of 60 gastric endocrine tumors, comprising 44 body-fundus argyrophil  
33 carcinoids, of which 23 developed in a background of hypergastrinemia and type A chronic atrophic  
34 gastritis (A-CAG), especially characterized with histologic patterns of an autoimmune process. Only  
35 22% of 36 carcinoids and 21% of 19 A-CAG carcinoids had HP colonization, compared to 50% of  
36 14 A-CAG-associated neuroendocrine carcinomas or mixed endocrine-exocrine tumors. On the other  
37 hand, 84% of 150 patients with early gastric cancer ( $p < 0.001$  versus carcinoids), mostly with A-  
38 CAG, had HP colonization [65]. They concluded that high gastrin levels and local mechanisms  
39 activated by chronic autoimmune gastritis are some of the factors that contribute in the pathogenesis  
40 of relatively indolent A-CAG-associated carcinoids, while active end-stage HP gastritis associated to  
41 environmental factors could contribute to more severe epithelial transformation, leading to gastric  
42 cancer and to neuroendocrine carcinomas or mixed endocrine-exocrine tumors [65]. **In addition, most**  
43 patients with A-CAG, despite having a low incidence of current overt infection, have been previously  
44  
45  
46  
47  
48  
49  
50  
51  
52  
53  
54  
55  
56  
57  
58  
59  
60  
61  
62  
63  
64  
65

1 infected with HP, as demonstrated by the presence of HP antibodies [66].  
2

3 In a recent study from an Indian NEN Center, gastric carcinoids constituted about 32% of all GEP  
4 NENs. At the histopathological review, a high incidence of multifocal atrophy in the antrum, fundus  
5 and body was observed, while in autoimmune gastritis, atrophy is especially localized to the gastric  
6 body [67]. The authors have speculated that in India, where HP infection is very common, multifocal  
7 atrophic gastritis caused by HP can represent a crucial risk factor in the development of gastric NENs.  
8  
9  
10  
11  
12  
13  
14  
15  
16  
17  
18  
19

### 20 **3 Effects of HP colonization on signalling pathways involved in NEN** 21 **transformation** 22 23 24 25

26 Although further epidemiological studies are necessary to confirm the association between HP  
27 infection and the development of gastric NENs, there are several conceptual evidences of mechanisms  
28 involved in these events.  
29  
30  
31  
32  
33

34 It is clear that HP infection induces the development of inflammatory disorders. Atrophic gastritis  
35 and ECL hyperplasia are the final consequence of this inflammatory process (figure 4). The  
36 destruction of the gastric parietal cells reduces the production of hydrochloric acid, promoting  
37 hypergastrinemia. The gastrin excess stimulates not only histamine secretion but also ECL cells  
38 proliferation, via the gastrin/ cholecystokinin-B receptor [68]. This process, along with dysplastic  
39 lesions, ultimately may lead to the development of NENs [69]. In addition, HP facilitates gastric ECL  
40 cell proliferation by other mechanisms. The mucosal inflammation, induced by HP, has been shown  
41 to cause excessive apoptosis, which in turn leads to proliferation. Lipopolysaccharides also appear to  
42 influence tumor ECL cell proliferation [70]. In rats HP lipopolysaccharides stimulate histamine  
43 release via the CD14 receptor. Histamine is a potent mitogenic factor, able to potentiate gastrin-driven  
44 DNA synthesis in ECL cells [71]. Another factor involved in ECL cell proliferation is REG protein,  
45 a growth factor, which may be stimulated by HP infection [72].  
46  
47  
48  
49  
50  
51  
52  
53  
54  
55  
56  
57  
58  
59  
60  
61  
62  
63  
64  
65

1  
2  
3  
4  
5  
6  
7  
8  
9  
10  
11  
12  
13  
14  
15  
16  
17  
18  
19  
20  
21  
22  
23  
24  
25  
26  
27  
28  
29  
30  
31  
32  
33  
34  
35  
36  
37  
38  
39  
40  
41  
42  
43  
44  
45  
46  
47  
48  
49  
50  
51  
52  
53  
54  
55  
56  
57  
58  
59  
60  
61  
62  
63  
64  
65

In the last years, several molecular pathways have emerged to explain how HP evades host defences, damages gastric tissue and promote tumorigenesis. Three major virulence factors appear to have a role in gastric tumorigenesis: vacuolating cytotoxin A, type IV secretion system, and cytotoxin-associated gene A protein [73]. Although most studies have focused on gastric adenocarcinoma and epithelial cells, in this section we will discuss the intracellular signalling pathways able to disrupt normal physiology of gastrointestinal mucosal cells during HP infection and are in common with the development of GEP NENs (figure 5). For most of these HP-perturbated signalling pathways, we cannot exclude a direct involvement also in ECL cells.

### 3.1 Tyrosine kinase-mediated signalling

Receptor tyrosine kinases belong to a family of receptors that mediate cellular responses to extracellular signals such as growth factors, hormones and cytokines. These receptors play an important role in cell proliferation, survival and differentiation. Several receptor tyrosine kinases are frequently upregulated in GEP NENs, such as the receptor families for vascular endothelial growth factor, epidermal growth factor and tyrosine-protein kinase c-Met [74-77]. Receptor tyrosine kinases activity results in the activation of several transduction systems, including the canonical Ras signalling pathway and PI3K–Akt–mTOR [78].

HP stimulated vascular endothelial growth factor receptor expression in human microvascular endothelial cells (HMEC-1) [79] and epidermal growth factor receptor expression in gastric epithelial cells [80]. HP strains carrying the type IV secretion system induce gastrin promoter activity via epidermal growth factor receptor [81]. Epidermal growth factor receptor is also activated by HP-integrin- $\beta$ 1 interaction [82]. HP infection may activate c-Met expression through cytotoxin-associated gene A protein in gastric epithelial cells, resulting in ERK1, 2 activation [83].

### 3.2 RAS–RAF–MEK–ERK pathway

1 The RAS-RAF-MEK-ERK pathway, activated by several growth factors, is involved in cell growth  
2 and cell differentiation. Dysregulation of this crucial pathway occurs due to overexpression and/or  
3 overactivation of the RAS and RAF genes [84]. Mutations of RAS [85-87] are very rare events in GEP  
4 NENs, with reported mutation frequencies [87] of HRAS 1% (2/150), KRAS 8% (10/125), NRAS 0.7%  
5 (2/274) or BRAF 1% (4/369). Although activating mutations of BRAF are rare in GEP NENs [88],  
6 wildtype BRAF and its activating small G-protein, RAP-1, are highly prevalent in the majority of GEP  
7 NENs. Overexpression of RAP-1 is able to activate MAPK-signalling and the expression of mitogenic  
8 transcription factors of GEP NEN cells [89]. Some authors have reported that RAF-1 signalling  
9 cascade activation is associated with the modulation of neuroendocrine phenotype in BON-1 cells, a  
10 well-known neuroendocrine tumor cell line [90, 91].

11 Gastrin, via the cholecystokinin 2 receptor, is the principal regulator of ECL cell proliferation via a  
12 MAPK-activated signal transduction cascade [92] and induction of the activator protein-1 complex  
13 transcription factor [93]. The latter regulate several genes involved in cell cycle progression (eg,  
14 cyclin genes) [94]. ECL cell proliferation is associated with fos/jun transcription activation by the  
15 MAPK pathway after gastrin-mediated RAS activation [95].

16 HP rapidly activates MAPKs upon contact with gastric epithelial cells [96] and, indirectly, promotes  
17 gastrin-induced MAPK transduction pathways in ECL cells through histamine release [95]. Several  
18 bacterial factors are involved in MAPK activation, including the vacuolating cytotoxin A [97, 98]  
19 and cytotoxin-associated gene A protein [99]. However, the type IV secretion system appears to be  
20 crucial for complete phosphorylation of ERK and MAPK [96, 100].

### 21 3.3 PI3K–AKT–mTOR pathway

22 The PI3K–AKT–mTOR pathway plays a relevant role in the pathogenesis and progression of GEP  
23 NENs [101]. AKT is the major kinase, which regulates cell survival and proliferation by inhibiting  
24 proapoptotic mitochondrial proteins and cell-cycle modulators. Dysregulation of this pathway is due  
25 to activation of PI3K or loss-of-function mutation of PTEN, TSC2 and GSK3. Studies in small bowel  
26  
27  
28  
29  
30  
31  
32  
33  
34  
35  
36  
37  
38  
39  
40  
41  
42  
43  
44  
45  
46  
47  
48  
49  
50  
51  
52  
53  
54  
55  
56  
57  
58  
59  
60  
61  
62  
63  
64  
65

1  
2  
3  
4  
5  
6  
7  
8  
9  
10  
11  
12  
13  
14  
15  
16  
17  
18  
19  
20  
21  
22  
23  
24  
25  
26  
27  
28  
29  
30  
31  
32  
33  
34  
35  
36  
37  
38  
39  
40  
41  
42  
43  
44  
45  
46  
47  
48  
49  
50  
51  
52  
53  
54  
55  
56  
57  
58  
59  
60  
61  
62  
63  
64  
65

NEN cell lines revealed a stronger activation of PI3K/AKT/mTOR pathway compared to that observed in normal ECL cells [102].

In gastric epithelial cells HP infection induced PTEN phosphorylation, which activated AKT [103] and inhibited apoptosis [104]. Interestingly, the HP urease seems to have a relevant role in the activation of the PI3K-AKT-mTOR pathway in gastric cells [105].

### 3.4 Notch signalling

Notch signalling pathway plays an important role in maintaining a dynamic balance between cell proliferation, differentiation and apoptosis and is an essential signalling in the regulation of inflammatory and immune responses. Notch signalling can have an oncogenic or tumour suppressor role. Histo-pathological studies have shown that Notch-1 is absent or poorly expressed in well-differentiated GEP NENs, suggesting a possible role as a tumour suppressor gene in these tumors [106].

After HP invasion, a significant reduction in the mRNA expression level of Notch-1 and Notch-2, together with low levels of active forms of Notch-1 and Notch-2, have been observed in GES-1, a human gastric epithelial cell line [107].

### 3.5 Wnt/ $\beta$ -catenin pathway

Wnt/ $\beta$ -catenin pathway is crucial to embryo development and adult tissue homeostasis. Aberrant activation of this pathway can cause uncontrolled cell growth and malignant transformation (Fig. 2). In NENs, cytoplasmic and nuclear beta-catenin accumulation, suggestive of Wnt/ $\beta$ -catenin signalling activation, has been reported in 1/12 gastro-intestinal NENs and 1/6 bronchial carcinoids [108]. Sun and colleagues found cytoplasmic accumulation and/or nuclear translocation of  $\beta$ -catenin in about 30% of gastro-intestinal NENs (27/80) [109]. In 72 cases of gastrointestinal NENs, accumulation of  $\beta$ -catenin in the cytoplasm and/or nucleus has been observed in 79% of cases (57/72) and mutations in exon 3 of  $\beta$ -catenin in 37% of tumors [110]. APC gene is a negative regulator that controls  $\beta$ -catenin concentrations and modulates cell adhesion. In ileal NENs, the APC gene was deleted in 15%

1 (4/27) and somatic mutations of **this** gene were detected in 23% (7/30) of examined tumour samples,  
2 including 57% missense and 14% nonsense/frameshift mutations [111].  
3  
4

5 HP activates Wnt/ $\beta$ -catenin signalling through several mechanisms in gastric cells. **Cytotoxin-**  
6 **associated gene A protein** induces nuclear  $\beta$ -catenin accumulation *in vivo* and *in vitro* [112, 113] **and**  
7 **activates the  $\beta$ -catenin through an independent phosphorylation manner in human gastric cancer**  
8 **epithelial cell lines or in rodent gastric cells [114]. The vacuolating cytotoxin A induces Wnt/ $\beta$ -**  
9 **catenin signalling through the activation of PI3K/AKT pathway [115].** HP can also activate Wnt/ $\beta$ -  
10 catenin pathway by recruiting tumor-associated macrophages [116]. Wnt/ $\beta$ -catenin activation in HP  
11 infection has been linked to angiogenesis in the gastric mucosa, which is an important process for  
12 tumorigenesis [117].  
13  
14  
15  
16  
17  
18  
19  
20  
21  
22  
23  
24

### 25 **3.6 The transforming growth factor-beta (TGF- $\beta$ ) signalling**

26  
27  
28 The TGF- $\beta$  exists in at least three isoforms: TGF- $\beta$ 1, TGF- $\beta$ 2, and TGF- $\beta$ 3 [118]. TGF- $\beta$  signalling  
29 is mediated by TGF- $\beta$  receptors 1 and 2 and **intracellular SMAD proteins**. These factors are involved  
30 in cell cycle regulation, apoptosis, tumor **angiogenesis and invasion** [119-121]. A high expression  
31 level of TGF- $\beta$  receptor 1 (intensity scores 2 and 3) has been detected in almost 100% of GEP NENs  
32 [122]. The tumor suppressor **SMAD4** has been demonstrated to be often mutated or deleted in small  
33 intestinal NENs in approximately 45% of cases (22/48) [123, 124].  
34  
35  
36  
37  
38  
39  
40  
41  
42  
43

44 TGF- $\beta$ 1 is a potent stimulator of ECL cell proliferation through downregulation of SMAD4 **and**  
45 **activation** of the ERK1/2 pathway [125]. *In vivo* studies have shown that HP infection induced  
46 upregulation of TGF- $\beta$ 1 in gastric mucosa. This effect is positively correlated with **the vacuolating**  
47 **cytotoxin A** genotype and the grade of chronic inflammation [126].  
48  
49  
50  
51  
52  
53

### 54 **3.7 TP53**

55  
56  
57 The **TP53** gene encodes p53, an important tumour suppressor modulating a network of genes  
58 **implicated** in DNA repair, cell growth arrest or cell senescence, apoptosis and autophagy [127]. The  
59  
60  
61  
62  
63  
64  
65



1 main effectors of *TP53* expression are *WIP1*, *MDM2*, *MDMX*, *ATM* and *ATR* genes [128, 129].

2 Mutations in the *TP53* gene have been consistently detected in poorly differentiated GEP NENs, with  
3 a frequency ranging from 20% to 73% of cases [130] and correlate with poor survival [131]. Hu and  
4 co-workers [132] observed a high rate of copy number gains of *MDM2* in 22%, *MDM4* in 40% and  
5 *WIP1* in 51% of pancreatic NENs. High ATM expression in pancreatic NENs was associated with  
6 higher tumour differentiation, lower tumour size, lower recurrence rate and better prognosis [133],  
7 while loss of ATM expression was common in metastasized disease and resulted to be associated  
8 with a worse prognosis [134]. Interestingly, in the African rodent mastomys *Tp53* seems to have a  
9 relevant role during the development of hypergastrinemia-induced ECLoma [135].  
10  
11  
12  
13  
14  
15  
16  
17  
18  
19  
20  
21

22 HP is able to inhibit the tumor suppressor *TP53* through AKT activation and subsequent degradation  
23 of p53 in gastric epithelial cells [136]. Inhibition of p53 may provide advantages to HP and allow it  
24 to alter cellular homeostasis without triggering cell cycle arrest or apoptosis [137].  
25  
26  
27  
28  
29

### 30 **3.8 Cyclin-dependent kinases (CDKs)**

31 The family of CDKs belongs to a superfamily of 20 members, which catalyse the phosphorylation of  
32 key proteins and transcription factors implicated in cell cycle transition [138-140]. Cyclin C/CDK3,  
33 Cyclin D/CDK4 and Cyclin D/CDK6 are involved in G<sub>0</sub>-G<sub>1</sub> transition and the early G<sub>1</sub> phase by  
34 phosphorylating the tumour suppressor retinoblastoma protein and thus activating E2F [141]. These  
35 pathways are commonly altered in tumors, including GEP NENs [142, 143]. In 92 tumour samples  
36 of human pancreatic NENs, overexpression of CDK4 and retinoblastoma protein was detected in 58%  
37 and 68%, respectively. Gene amplifications of *CDK4* or *CDK6* were found in 19% (5/26) of  
38 investigated pancreatic NENs [144]. p27 is CDK inhibitor encoded by the *CDKN1B* gene and  
39 regulates the transition from cell cycle phase G<sub>0</sub>/G<sub>1</sub> to S and is implicated also in cellular motility and  
40 apoptosis. Frameshift mutations or deletions of *CDKN1B* were reported in about 8-23% of small  
41 intestinal NENs [145, 146]. Loss of p27 protein expression, which occurred in 21% of 327 GEP  
42 NENs, was a predictor of poor prognosis [147]. The inactivation of *RBI* gene, which occurs mainly  
43  
44  
45  
46  
47  
48  
49  
50  
51  
52  
53  
54  
55  
56  
57  
58  
59  
60  
61  
62  
63  
64  
65

1  
2 by somatic mutations, has been reported in 71% of poorly differentiated pancreatic **neuroendocrine**  
3 **carcinomas** [148]. Both message and protein levels of cyclin D1 increased *in vitro* during ECL cell  
4 tumorigenesis [149, 150].  
5

6  
7 HP and related inflammatory response are associated *in vivo* with alterations in expression of cyclin  
8 D1 and **CDKN1B and abnormalities in epithelial cell proliferation**, cell cycle progression and  
9 apoptosis. HP infection can stimulate proliferation of gastric mucosal epithelial cells [151], through  
10 activating the MAPK pathway and promoting the expression of cyclin D1 [152]. In addition, HP  
11 decreases **p27 expression** in gastric cells through epigenetic mechanisms [153, 154]. Interestingly,  
12 low gastric p27 may promote carcinogenesis associated with HP infection by inhibiting apoptotic  
13 pathways [155].  
14  
15  
16  
17  
18  
19  
20  
21  
22  
23  
24

### 25 **3.9 Interleukin-6/STAT3/CDX2**

26  
27 The **interleukin-6/STAT3/CDX2** pathway represents a relevant factor for the tumor progression of  
28 gastrointestinal NENs [156-158].  
29  
30  
31  
32  
33

34 It has been reported that the proinflammatory cytokine **interleukin-6** is upregulated during HP  
35 infection in the gastric mucosa, with a potential involvement in gastrointestinal tumor development  
36 [159]. Interleukin-6 binds to the  $\alpha$ -subunit of its specific receptor and activates two main signalling  
37 pathways: SHP-2/ERK and **JAK/STAT** [99], **able to promote mucosal inflammation and**  
38 **carcinogenesis [160-163]. In addition,** HP infection induces CDX2 expression in patients with  
39 chronic gastritis and intestinal metaplasia [163].  
40  
41  
42  
43  
44  
45  
46  
47  
48

### 49 **3.10 Cyclooxygenase-2 (COX-2)**

50  
51 **COX-2** is able to modulate cell apoptosis and adhesion and promote tumor cell metastasis [165].  
52  
53 COX-2 overexpression was observed in 54% (126 of 234) of GEP NENs and was found to be  
54 positively correlated with Ki-67 labelling index and associated with poor prognosis [164].  
55  
56  
57  
58  
59  
60  
61  
62  
63  
64  
65

1  
2  
3  
4  
5  
6  
7  
8  
9  
10  
11  
12  
13  
14  
15  
16  
17  
18  
19  
20  
21  
22  
23  
24  
25  
26  
27  
28  
29  
30  
31  
32  
33  
34  
35  
36  
37  
38  
39  
40  
41  
42  
43  
44  
45  
46  
47  
48  
49  
50  
51  
52  
53  
54  
55  
56  
57  
58  
59  
60  
61  
62  
63  
64  
65

COX-2 is induced in HP-positive gastritis and present at high levels in gastric antrum, where bacterial density is elevated [166]. This suggested that expression of COX-2 was a direct response to HP infection [167]. In patients with HP-positive gastric mucosal lesions, positive detection rate of COX-2 resulted significantly higher than that in HP-negative gastric mucosal lesions [168].

## 4 Inflammatory bowel disease (IBD), NENs and microbiota, is there a possible link?

### 4.1 IBD and NENs

IBD is a group of inflammatory conditions of the colon and small intestine, that includes Crohn's disease (CD) and ulcerative colitis.

Data from population study and large pathological and disease registry suggest an association between IBD and intestinal NENs. Among a cohort of 20,917 patients affected by CD, 9 NENs were observed, resulting, in a 7-fold increased neoplastic risk, as compared to the general population [169].

In a prospective observational 7-year follow-up cohort study in 590 patients with mono-institutional IBD diagnosis, neuroendocrine carcinoma and rectal carcinoid occurrence was increased (RR = 13.1, 95%CI: 1.82-29.7 and RR = 8.94, 95%CI: 1.18-59.7 respectively) [170]. Similarly, in a large retrospective study from US-based population database of electronic medical records of 62,817,650 individuals from 26 major healthcare institutions, 4530 of them were reported to have a large colonic carcinoid diagnosis and a personal history of CD or ulcerative colitis. For these subjects an increased risk to develop large bowel carcinoid was observed: OR 6.93 (95% CI 5.55-8.64,  $p < 0.0001$ ) and OR 6.45 (95% CI 5.24-7.95,  $p < 0.0001$ ), respectively [171]. Sciola et al. reported a prevalence for IBD of 4.8% in a series of 83 GEP NENs. This value was higher than that reported in general population [172]. In contrast, a recent Dutch nationwide study reported in the entire cohort of IBD patients from national pathological database 51 patients with concomitant IBD and colonic NENs with an estimated

1 prevalence rate ratios (PRR) between 2.8 and 4.1. These values were lower than ones from colonic  
2 resection specimens for diverticulitis and ischemia adjusted for resection type, sex and age,  
3 suggesting an incidental finding because of frequent colonic resection [173].  
4  
5  
6

7 Detailed clinical and pathological features data for NENs in IBD is however lacking in literature.  
8  
9 Data arose from case reports and surgical or pathological series revision with different collection data  
10 method and analysis [172 174]. Interestingly, only a minority of patients with both diseases developed  
11 an aggressive NEN. In fact, only 8.3% (3/36) of NENs with IBD, reported by Derikx et al., showed  
12 distant metastasis (stage IV). In a recent retrospective study, Wong reported detailed clinical and  
13 pathological data in 17 patients with IBD and neuroendocrine proliferation. Eight patients (47.1%)  
14 were classified as neuroendocrine cell micronests with subcentimetric lesions and no oncological  
15 strength, while in the remain 9 (52.9%) a 1-11 millimetres, low grade and stage I NEN was reported  
16  
17  
18  
19  
20  
21  
22  
23  
24  
25  
26  
27 [175].  
28  
29

## 30 4.2 Microbiota and IBD

31 IBD is associated with alterations in intestinal microbiota. The pathogenesis of the disease involves  
32 complex interactions between immune system, the microbiome and environmental factors in  
33 genetically susceptible individuals [176]. Despite an impressive number of 163 genetic loci of IBD  
34 susceptibility, most of which associated with both CD and ulcerative colitis, other factors as  
35 environmental exposures seem to contribute to disease pathogenesis. Most evidences point to the  
36 interaction between the host mucosal immune system and microbes, both at the epithelial cell surface  
37 and within the gut lumen, as one of the most important factors [177]. In patients with IBD, a  
38 compositional change in microbiota and an expansion of potential pathogens have been reported. In  
39 particular, a depletion in specific commensal bacteria, as Lachnospiraceae (class of Clostridia and  
40 phylum of Firmicutes) and Bacteroidetes phylum, and an enrichment in Proteobacteria was reported  
41 [178] in patients with IBD compared to healthy subjects. There are no reliable data if microbial  
42 composition changes in human have a causative role in inducing intestinal inflammation or if could  
43  
44  
45  
46  
47  
48  
49  
50  
51  
52  
53  
54  
55  
56  
57  
58  
59  
60  
61  
62  
63  
64  
65

1 be a side effect (following acute infection or host inflammatory responses) and no specific pathogenic  
2 **microorganism** was recognized as singular cause of chronic IBD [179, 180]. However, alterations in  
3  
4 gut microbiota were found in CD and ulcerative colitis, with a relevant impact of aging and disease  
5  
6 stage. In fact, a decreased amount of *Roseburia hominis* and *Faecalibacterium prausnitzii* (Fprau)  
7  
8 has been observed using RT-PCR in ulcerative colitis fecal samples [181]. In CD a global decrease  
9  
10 in the biodiversity of the fecal microbiota with markedly reduced diversity of Firmicutes and in  
11  
12 particular of the *Clostridium leptum* phylogenetic group was reported using a metagenomic approach  
13  
14 [182]. An elegant paper from Sokol reported lower proportion of Fprau in resected ileal mucosa from  
15  
16 patients with CD associated with endoscopic recurrence at 6 months, suggesting a significant role for  
17  
18 microbiota variation in recurrent disease [183]. **In this** study an anti-inflammatory property of Fprau  
19  
20 has been demonstrated both *in vitro* and *in vivo* [183].  
21  
22  
23  
24  
25  
26

### 27 **4.3 Microbiota e NENs**

28  
29 Although only few studies are available in literature on microbiota and NENs, there are common  
30  
31 patterns of microbiome composition with IBD. In 2008 Dorffel showed a significant depletion of  
32  
33 Fprau in 12/23 patients with NENs, as previously reported in CD [181, 183]. Another study evaluated  
34  
35 microbial fecal composition using microscopic examination and fluorescence and *in situ*  
36  
37 hybridization in 66 patients with NENs (25 from foregut, 30 from midgut and 11 from hindgut origin),  
38  
39 25 healthy subjects and 50 patients with CD. Depletion of Fprau was observed in 67% of patients  
40  
41 with midgut **NENs**, 84% of untreated CD and 56% of treated CD, while only in 3% of patients with  
42  
43 chronic idiopathic diarrhea and 0% of healthy controls. In the same study fecal Enterobacteriaceae  
44  
45 were significantly increased in NENs and CD patients. The effect of NEN therapy on microbiota was  
46  
47 also analyzed. **Somatostatin analogues had** no influence on the concentration of habitual or occasional  
48  
49 bacterial groups, while interferon alpha-2b and chemotherapy induced a massively increased in  
50  
51 Fprau. Similar data were reported in successfully treated CD patients despite different drugs were  
52  
53 used [184].  
54  
55  
56  
57  
58  
59  
60  
61  
62  
63  
64  
65

1 Therefore, a depletion of Fprau has been reported both in patients with IBD and NENs. A possible  
2 protective effect of Fprau on IBD inflammation has been proposed. Fprau is known to have a role in  
3  
4 producing a large amount of butyrate, able to modulate the immune system and to protect the gut  
5  
6 barrier integrity. The gut microbiota-derived butyrate, not also supplies energy source for intestinal  
7  
8 epithelial cells, but also inhibits inflammation through epigenetic mechanisms [185]. In addition,  
9  
10 recent data suggested a protective effect of Fprau for several tumors, such as colon carcinoma [186],  
11  
12 breast cancer [187] and melanoma [188].  
13  
14  
15  
16  
17  
18  
19  
20

## 21 **5 Conclusions**

22  
23  
24 In the last years there is mounting evidence supporting the role of the gut microbiome in the  
25  
26 pathogenesis of several tumors and response to the therapy.  
27  
28

29  
30 While HP appears to be involved in the development of gastric NENs, no clear data are currently  
31  
32 available concerning the effect of microbiota on the development of other GEP NENs. Preliminary  
33  
34 data reported a depletion of Fprau in patients with midgut NENs and in subjects with IBD. However,  
35  
36 no cause-effect relationship between these events has been conclusively demonstrated.  
37  
38

39  
40 In addition, a potential role for gut dysbiosis was reported in IBD not only for bacteria species but  
41  
42 also for fungal microbiota (mycobiota) and viral microbiota (virobiota) [189, 190]. While, no data for  
43  
44 mycobiota or virobiota modifications are available in NENs [191].  
45  
46  
47

48 Further studies are required to clarify the potential role of the intestinal microbiota (including bacteria,  
49  
50 fungi and viruses) in the development and progression of GEP NENs. These aspects could have  
51  
52 relevant clinical implications in the prevention and therapy of these tumors.  
53  
54  
55  
56  
57  
58  
59  
60  
61  
62  
63  
64  
65

## References

- 1) Muscogiuri G, Balercia G, Barrea L, Cignarelli A, Giorgino F, Holst JJ, Laudisio D, Orio F, Tirabassi G, Colao A. Gut: A key player in the pathogenesis of type 2 diabetes? *Crit Rev Food Sci Nutr.* 2018; 24 :1294-1309.
- 2) Barrea L, Muscogiuri G, Annunziata G, Laudisio D, Pugliese G, Salzano C, Colao A, Savastano S. From gut microbiota dysfunction to obesity: could short-chain fatty acids stop this dangerous course? *Hormones (Athens).* 2019; 18:245-250.
- 3) Zhang YL, Li S., Gan RY, Zhou T, Xu DP, Li HB. Impacts of gut bacteria on human health and diseases. *Int J Mol Sci.* 2015; 4:7493-519.
- 4) Feng Q, Chen WD, Wang YD. Gut microbiota: an integral moderator in health and disease. *Front Microbiol.* 2018; 9:151.
- 5) Kong F, Cai Y. Study insights into gastrointestinal cancer through the gut microbiota. *BioMed Research International.* 2019; 3:1-8.
- 6) Lynch SV, Pedersen O. The human intestinal microbiome in health and disease. *N Engl J Med.* 2016; 375:2369-2379.
- 7) Greenhalgh K, Meyer KM, Aagaard KM, Wilmes P. The human gut microbiome in health: establishment and resilience of microbiota over a lifetime. *Environ Microbiol.* 2016;18: 2103-16.
- 8) Castellarin M, Warren RL, Freeman JD, Dreolini L, Krzywinski M, Strauss J, Barnes R, Watson P, Allen-Vercoe E, Moore RA, Holt RA. *Fusobacterium nucleatum* infection is prevalent in human colorectal carcinoma. *Genome Res.* 2012; 22: 299–306.
- 9) Raza MH, Gul K, Arshad A, Riaz N, Waheed U, Rauf A et al. Microbiota in cancer development and treatment. *J Cancer Res Clin Oncol.* 2019; 145:49-63.
- 10) Sivan A, Corrales L, Hubert N, Williams JB, Aquino-Michaels K, Earley ZM, et al. Commensal *Bifidobacterium* promotes antitumor immunity and facilitates anti-PD-L1 efficacy. *Science.* 2015; 350:1084-9.
- 11) Schmidt TSB, Raes J, Bork P. The human gut microbiome: from association to modulation. *Cell.* 2018; 172:1198-1215.
- 12) Cani PD. Human gut microbiome: hopes, threats and promises. *Gut.* 2018; 67:1716-1725.
- 13) Vivarelli S, Salemi R, Candido S, Falzone L, Santagati M, Stefani S, et al. Gut microbiota and cancer: from pathogenesis to therapy. *Cancers (Basel).* 2019; 11:38.
- 14) Carding S, Verbeke K, Vipond DT, Corfe BM, Owen LJ. Dysbiosis of the gut microbiota in disease. *Microb Ecol Health Dis.* 2015; 26:26191.
- 15) Schumacher TN, Schreiber RD. Neoantigens in cancer immunotherapy. *Science.* 2015; 348:69-74.
- 16) Hanahan D, Coussens LM. Accessories to the crime: functions of cells recruited to the tumor microenvironment. *Cancer Cell.* 2012; 21:309-322.
- 17) Joyce JA, Fearon DT. T cell exclusion, immune privilege, and the tumor microenvironment. *Science.* 2015; 348:74-80.
- 18) Guerra L, Guidi R, Frisan T. Do bacterial genotoxins contribute to chronic inflammation, genomic instability and tumor progression? *FEBS J.* 2011; 278:4577-4588.
- 19) Hekmatshoar Y, Rahbar Saadat Y, Hosseiniyan Khatibi SM, Ozkan T, Zununi Vahed F, Nariman-Saleh-Fam Z, et al. The impact of tumor and gut microbiotas on cancer therapy: Beneficial or detrimental? *Life Sci.* 2019; 233:116680.
- 20) Nougayrède JP, Homburg S, Taieb F, Boury M, Brzuszkiewicz E, Gottschalk G, et al. *Escherichia coli* induces DNA double-strand breaks in eukaryotic cells. *Science.* 2006; 313:848-51.

- 1 21) Putze J, Hennequin C, Nougayrède JP, Zhang W, Homburg S, Karch H, et al. Genetic structure  
2 and distribution of the colibactin genomic island among members of the family  
3 Enterobacteriaceae. *Infect Immun*. 2009; 77:4696-703.
- 4 22) Arthur JC, Gharaibeh RZ, Mühlbauer M, Perez-Chanona E, Uronis JM, McCafferty J, et al.  
5 Microbial genomic analysis reveals the essential role of inflammation in bacteria-induced  
6 colorectal cancer. *Nat Commun*. 2014; 5:4724.
- 7 23) Arthur JC, Perez-Chanona E, Mühlbauer M, Tomkovich S, Uronis JM, Fan TJ, et al. Intestinal  
8 inflammation targets cancer-inducing activity of the microbiota. *Science*. 2012;338:120-3.
- 9 24) Goodwin AC, Destefano Shields CE, Wu S, Huso DL, Wu X, Murray-Stewart TR, et al.  
10 Polyamine catabolism contributes to enterotoxigenic *Bacteroides fragilis*-induced colon  
11 tumorigenesis. *Proc Natl Acad Sci U S A*. 2011; 108:15354-9.
- 12 25) Clevers H, Nusse R. Wnt/ $\beta$ -catenin signaling and disease. *Cell*. 2012; 149:1192-1205.
- 13 26) Nusse R, Clevers H. Wnt/ $\beta$ -catenin signaling, disease, and emerging therapeutic modalities. *Cell*.  
14 2017; 169:985-999.
- 15 27) Loh KM, van Amerongen R, Nusse R. Generating cellular diversity and spatial form: Wnt  
16 signaling and the evolution of multicellular animals. *Dev Cell*. 2016; 38:643-655.
- 17 28) Holstein TW. The evolution of the Wnt pathway. *Cold Spring Harb Perspect Biol*. 2012;4:  
18 a007922.
- 19 29) Kretzschmar K, Clevers H. Wnt/ $\beta$ -catenin signaling in adult mammalian epithelial stem cells.  
20 *Dev Biol*. 2017 15; 428:273-282.
- 21 30) Majidinia M, Aghazadeh J, Jahanban-Esfahlani R, Yousefi B. The roles of Wnt/ $\beta$ -  
22 catenin pathway in tissue development and regenerative medicine. *J Cell Physiol*. 2018; 233:5598-5612.
- 23 31) Krausova M, Korinek V. Wnt signaling in adult intestinal stem cells and cancer. *Cell Signal*.  
24 2014; 26:570-579.
- 25 32) Lu R, Liu X, Wu S, Xia Y, Zhang YG, Petrof EO, et al. Consistent activation of the  $\beta$ -catenin  
26 pathway by *Salmonella* type-three secretion effector protein AvrA in chronically infected  
27 intestine. *Am J Physiol Gastrointest Liver Physiol*. 2012;303: G1113-25.
- 28 33) Panebianco C, Andriulli A, Paziienza V. Pharmacomicrobiomics: exploiting the drug-microbiota  
29 interactions in anticancer therapies. *Microbiome*. 2018; 6:92.
- 30 34) Zitvogel L, Galluzzi L, Viaud S, Vétizou M, Daillère R, Merad M, Kroemer G. Cancer and the  
31 gut microbiota: an unexpected link. *Sci Transl Med*. 2015 Jan 21;7(271):271ps1.
- 32 35) Hooper LV, Littman DR, Macpherson AJ. Interactions between the microbiota and the immune  
33 system. *Science*. 2012;336:1268-1273.
- 34 36) Liu Y, Baba Y, Ishimoto T, Iwatsuki M, Hiyoshi Y, Miyamoto Y, Yoshida N, Wu R, Baba H.  
35 Progress in characterizing the linkage between *Fusobacterium nucleatum* and gastrointestinal  
36 cancer. *J Gastroenterol*. 2019;54:33-41
- 37 37) Panebianco C, Potenza A, Andriulli A, Paziienza V. Exploring the microbiota to better understand  
38 gastrointestinal cancers physiology. *Clin Chem Lab Med*. 2018;56(9):1400-1412.
- 39 38) Rea D, Coppola G, Palma G, Barbieri A, Luciano A, Del Prete P, Rossetti S, Berretta M, Facchini  
40 G, Perdonà S, Turco MC, Arra C. Microbiota effects on cancer: from risks to therapies.  
41 *Oncotarget*. 2018; 9:17915-17927.
- 42 39) Wong SH, Kwong TNY, Wu CY, Yu J. Clinical applications of gut microbiota in cancer biology.  
43 *Semin Cancer Biol*. 2019; 55:28-36.
- 44 40) Panebianco C, Adamberg K, Jaagura M, Copetti M, Fontana A, Adamberg S, et al. Influence of  
45 gemcitabine chemotherapy on the microbiota of pancreatic cancer xenografted mice. *Cancer  
46 Chemother Pharmacol*. 2018; 81:773-782.
- 47 41) DiDonato JA, Mercurio F, Karin M. NF- $\kappa$ B and the link between inflammation and cancer.  
48 *Immunol Rev*. 2012; 246:379-400.
- 49  
50  
51  
52  
53  
54  
55  
56  
57  
58  
59  
60  
61  
62  
63  
64  
65



- 1  
2  
3  
4  
5  
6  
7  
8  
9  
10  
11  
12  
13  
14  
15  
16  
17  
18  
19  
20  
21  
22  
23  
24  
25  
26  
27  
28  
29  
30  
31  
32  
33  
34  
35  
36  
37  
38  
39  
40  
41  
42  
43  
44  
45  
46  
47  
48  
49  
50  
51  
52  
53  
54  
55  
56  
57  
58  
59  
60  
61  
62  
63  
64  
65
- 42) Grivennikov SI, Wang K, Mucida D, Stewart CA, Schnabl B, Jauch D, et al. Adenoma-linked barrier defects and microbial products drive IL-23/IL-17-mediated tumour growth. *Nature*. 2012; 491:254-8.
  - 43) Schwabe RF, Jobin C. The microbiome and cancer. *Nat Rev Cancer*. 2013; 13:800-812.
  - 44) Elinav E, Nowarski R, Thaiss CA, Hu B, Jin C, Flavell RA. Inflammation-induced cancer: crosstalk between tumours, immune cells and microorganisms. *Nat Rev Cancer*. 2013; 13:759-771.
  - 45) Grivennikov SI, Karin M. Inflammatory cytokines in cancer: tumour necrosis factor and interleukin 6 take the stage. *Ann Rheum Dis*. 2011;70: i104-i108.
  - 46) Grivennikov SI. IL-11: a prominent pro-tumorigenic member of the IL-6 family. *Cancer Cell*. 2013;24 :145-147.
  - 47) Yu H, Pardoll D, Jove R. STATs in cancer inflammation and immunity: a leading role for STAT3. *Nat Rev Cancer*. 2009; 9:798-809.
  - 48) Li N, Grivennikov SI, Karin M. The unholy trinity: inflammation, cytokines, and STAT3 shape the cancer microenvironment. *Cancer Cell*. 2011; 19:429-431.
  - 49) Valenzano M, Bisio A, Grassi G. *Helicobacter pylori* and diabetes mellitus: a controversial relationship. *Minerva Endocrinol*. 2019; 44:301-9.
  - 50) Warren JR, Marshall B. Unidentified curved bacilli on gastric epithelium in active chronic gastritis. *Lancet*. 1983; 1:1273-5.
  - 51) Parsonnet J, Friedman GD, Vandersteen DP, Chang Y, Vogelmann JH, Orentreich N, et al. *Helicobacter pylori* infection and the risk of gastric carcinoma. *N Engl J Med*. 1991; 325:1127-31.
  - 52) Nomura A, Stemmermann GN, Chyou PH, Kato I, Perez-Perez GI, Blaser MJ. *Helicobacter pylori* infection and gastric carcinoma among Japanese Americans in Hawaii. *N Engl J Med*. 1991; 325:1132-6.
  - 53) Forman D, Newell DG, Fullerton F, Yarnell JW, Stacey AR, Wald N, et al. Association between infection with *Helicobacter pylori* and risk of gastric cancer: evidence from a prospective investigation. *BMJ*. 1991; 302:1302-5.
  - 54) Correa P, Fox J, Fontham E, Ruiz B, Lin YP, Zavala D, et al. *Helicobacter pylori* and gastric carcinoma. Serum antibody prevalence in populations with contrasting cancer risks. *Cancer*. 1990; 66:2569-74.
  - 55) Sipponen P, Hyvarinen H. Role of *Helicobacter pylori* in the pathogenesis of gastritis, peptic ulcer and gastric cancer. *Scand J Gastroenterol Suppl*. 1993; 196:3-6.
  - 56) Oberg K, Astrup L, Eriksson B, Falkmer SE, Falkmer UG, Gustafsen J, et al. Guidelines for the management of gastroenteropancreatic neuroendocrine tumours (including bronchopulmonary and thymic neoplasms). Part II-specific NE tumour types. *Acta Oncol*. 2004; 43:626-36.
  - 57) Grozinsky-Glasberg S, Alexandraki KI, Angelousi A, Chatzellis E, Sougioultzis S, Kaltsas G. Gastric carcinoids. *Endocrinol Metab Clin North Am*. 2018; 47:645-60.
  - 58) Antonodimitrakis P, Tsolakis A, Welin S, Kozlovacki G, Oberg K, Granberg D. Gastric carcinoid in a patient infected with *Helicobacter pylori*: a new entity? *World J Gastroenterol*. 2011; 17:3066-8.
  - 59) Takahashi S. Long-term *Helicobacter pylori* infection and the development of atrophic gastritis and gastric cancer in Japan. *J Gastroenterol*. 2002; 37:24-7.
  - 60) Hirayama F, Takagi S, Iwao E, Yokoyama Y, Haga K, Hanada S. Development of poorly differentiated adenocarcinoma and carcinoid due to long-term *Helicobacter pylori* colonization in Mongolian gerbils. *J Gastroenterol*. 1999; 34:450-4.

- 1  
2  
3  
4  
5  
6  
7  
8  
9  
10  
11  
12  
13  
14  
15  
16  
17  
18  
19  
20  
21  
22  
23  
24  
25  
26  
27  
28  
29  
30  
31  
32  
33  
34  
35  
36  
37  
38  
39  
40  
41  
42  
43  
44  
45  
46  
47  
48  
49  
50  
51  
52  
53  
54  
55  
56  
57  
58  
59  
60  
61  
62  
63  
64  
65
- 61) Sato Y, Iwafuchi M, Ueki J, Yoshimura A, Mochizuki T, Motoyama H, et al. Gastric carcinoid tumors without autoimmune gastritis in Japan: a relationship with *Helicobacter pylori* infection. *Dig Dis Sci*. 2002; 47:579-85.
  - 62) Kagawa J, Honda S, Kodama M, Sato R, Murakami K, Fujioka T. Enterocromaffin-like cell tumor induced by *Helicobacter pylori* infection in Mongolian gerbils. *Helicobacter*. 2002; 7:390-7.
  - 63) Cao L, Mizoshita T, Tsukamoto T, Takenaka Y, Toyoda T, Cao X, et al. Development of carcinoid tumors of the glandular stomach and effects of eradication in *Helicobacter pylori*-infected Mongolian gerbils. *Asian Pac J Cancer Prev*. 2008; 9:25-30.
  - 64) Murphy G, Dawsey SM, Engels EA, Ricker W, Parsons R, Etemadi A, et al. Cancer risk after pernicious anemia in the US elderly population. *Clin Gastroenterol Hepatol*. 2015; 13:2282-9.
  - 65) Solcia E, Rindi G, Fiocca R, Villani L, Buffa R, Ambrosiani L, et al. Distinct patterns of chronic gastritis associated with carcinoid and cancer and their role in tumorigenesis. *Yale J Biol Med*. 1992; 65:793-804.
  - 66) Karnes WE Jr, Samloff IM, Siurala M, Kekki M, Sipponen P, Kim SW, et al. Positive serum antibody and negative tissue staining for *Helicobacter pylori* in subjects with atrophic body gastritis. *Gastroenterology*. 1991; 101:167-74.
  - 67) Ananthamurthy A, Correa M, Patil M. Type 1 Gastric carcinoid in the indian population and its association with multifocal gastric atrophy. *Euroasian J Hepatogastroenterol*. 2016; 6:106-10.
  - 68) Modlin M, Tang LH. The gastric enterochromaffin-like cell: an enigmatic cellular lesion. *Gastroenterology*. 1996; 111:783-810.
  - 69) Sue S, Shibata W, Maeda S. *Helicobacter pylori*-induced signaling pathways contribute to intestinal metaplasia and gastric carcinogenesis. *Biomed Res Int*. 2015; 2015:737621.
  - 70) Kidd M, Miu K, Tang LH, Perez-Perez GI, Blaser MJ, Sandor A, Modlin IM. *Helicobacter pylori* lipopolysaccharide stimulates histamine release and DNA synthesis in rat enterochromaffin-like cells. *Gastroenterology*. 1997; 113:1110-7.
  - 71) Modlin M, Kidd M, Miu K, Tang LH. The effect of *Helicobacter pylori* on enterochromaffin-like (ECL) cell function. *Helicobacter pylori* pp 176-187.
  - 72) Kinoshita Y, Ishihara S, Kadowaki Y, Fukui H, Chiba T. Reg protein is a unique growth factor of gastric mucosal cells. *J Gastroenterol*. 2004; 39:507-13
  - 73) Chang WL, Yeh YC, Sheu BS. The impacts of *H. pylori* virulence factors on the development of gastroduodenal diseases. *J Biomed Sci*. 2018; 25:68.
  - 74) Bowen KA, Silva SR, Johnson JN, Doan HQ, Jackson LN, Gulhati P, et al. An analysis of trends and growth factor receptor expression of GI carcinoid tumors. *Gastrointest Surg* . 2009; 13:1773-80.
  - 75) Besig S, Volland P, Baur DM, Perren A, Prinz C. Vascular endothelial growth factors, angiogenesis, and survival in human ileal enterochromaffin cell carcinoids. *Neuroendocrinology*. 2009; 90:402-15.
  - 76) Shah T, Hochhauser D, Frow R, Quaglia A, Dhillon AP, Caplin ME. Epidermal growth factor receptor expression and activation in neuroendocrine tumours. *J. Neuroendocrinol*. 2006; 18:355-60.
  - 77) Azzoni C, Bottarelli L, Cecchini S, Lagrasta C, Pizzi S, D'Adda T, et al. Involvement of HER-2/neu and metastasis-related proteins in the development of ileal neuroendocrine tumors. *Virchows Arch*. 2011; 458:525-36.
  - 78) Grillo F, Florio T, Ferrau F, Kara E, Fanciulli G, Faggiano A, et al. Emerging multitarget tyrosine kinase inhibitors in the treatment of neuroendocrine neoplasms. *Endocr Relat Cancer*. 2018; 25:R453-R466.

- 1  
2  
3  
4  
5  
6  
7  
8  
9  
10  
11  
12  
13  
14  
15  
16  
17  
18  
19  
20  
21  
22  
23  
24  
25  
26  
27  
28  
29  
30  
31  
32  
33  
34  
35  
36  
37  
38  
39  
40  
41  
42  
43  
44  
45  
46  
47  
48  
49  
50  
51  
52  
53  
54  
55  
56  
57  
58  
59  
60  
61  
62  
63  
64  
65
- 79) de Jesus Souza M, de Moraes JA, Da Silva VN, Helal-Neto E, Uberti AF, Scopel-Guerra A, et al. *Helicobacter pylori* urease induces pro-inflammatory effects and differentiation of human endothelial cells: Cellular and molecular mechanism. *Helicobacter*. 2019 Jun; 24:e12573.
- 80) Keates S, Keates AC, Katchar K, Peek RM Jr, Kelly CP. *Helicobacter pylori* induces up-regulation of the epidermal growth factor receptor in AGS gastric epithelial cells. *J Infect Dis*. 2007; 196:95-103.
- 81) Gunawardhana N, Jang S, Choi YH, Hong YA, Jeon YE, Kim A, et al. *Helicobacter pylori*-induced HB-EGF upregulates gastrin expression via the EGF Receptor, C-Raf, Mek1, and Erk2 in the MAPK pathway. *Front Cell Infect Microbiol*. 2018; 7:541.
- 82) Kwok T, Zabler D, Urman S, Rohde M, Hartig R, Wessler S, et al. *Helicobacter* exploits integrin for type IV secretion and kinase activation. *Nature* 2007; 449:862-866.
- 83) Tegtmeier N, Zabler D, Schmidt D, Hartig R, Brandt S, Backert S. Importance of EGF receptor, HER2/Neu and Erk1/2 kinase signalling for host cell elongation and scattering induced by the *Helicobacter pylori* CagA protein: Antagonistic effects of the vacuolating cytotoxin VacA. *Cell Microbiol*. 2009; 11:488-505.
- 84) Davies H, Bignell GR, Cox C, Stephens P, Edkins S, Clegg S, et al. Mutations of the BRAF gene in human cancer. *Nature*. 2002 Jun; 417:949-54.
- 85) Jiao Y, Shi C, Edil BH, de Wilde RF, Klimstra DS, Maitra A, et al. DAXX/ATRAX, MEN1, and mTOR pathway genes are frequently altered in pancreatic neuroendocrine tumours. *Science*. 2011; 331:1199-1203
- 86) Gilbert JA, Adhikari LJ, Lloyd RV, Halfdanarson TR, Muders MH, Ames MM. Molecular markers for novel therapeutic strategies in pancreatic endocrine tumours. *Pancreas*. 2013; 42:411–421.
- 87) Astsaturov IA, Cohen SJ, Engstrom PF, Gatalica Z, Bender RP, Basu GD et al. Profiling of a global cohort of 1250 neuroendocrine tumours to identify multiple potential drug targets. *Journal of Clinical Oncology* 2014 32 214–214. [https://doi.org/10.1200/jco.2014.32.3\\_suppl.214](https://doi.org/10.1200/jco.2014.32.3_suppl.214).
- 88) Tannapfel A, Vomschloss S, Karhoff D, Markwarth A, Hengge UR, Wittekind C, et al. BRAF gene mutations are rare events in gastroenteropancreatic neuroendocrine tumors. *Am J Clin Pathol*. 2005; 123:256-60.
- 89) Karhoff D, Sauer S, Schrader J, Arnold R, Fendrich V, Bartsch DK, et al. Rap1/B-Raf signaling is activated in neuroendocrine tumors of the digestive tract and Raf kinase inhibition constitutes a putative therapeutic target. *Neuroendocrinology*. 2007; 85:45-53.
- 90) Sippel RS, Carpenter JE, Kunnimalaiyaan M, Lagerholm S, Chen H. Raf-1 activation suppresses neuroendocrine marker and hormone levels in human gastrointestinal carcinoid cells. *Am J Physiol Gastrointest Liver Physiol*. 2003; 285:G245-54.
- 91) Ning L, Chen H, Kunnimalaiyaan M. Focal adhesion kinase, a downstream mediator of Raf-1 signaling, suppresses cellular adhesion, migration, and neuroendocrine markers in BON carcinoid cells. *Mol Cancer Res*. 2010; 8:775-82.
- 92) Rozengurt E, Walsh JH. Gastrin, CCK, signaling, and cancer. *Ann Rev Physiol*. 2001; 63:49–76.
- 93) Chalmers CJ, Gilley R, March HN, Balmanno K, Cook SJ. The duration of ERK1/2 activity determines the activation of c-Fos and Fra-1 and the composition and quantitative transcriptional output of AP-1. *Cell Signal*. 2007; 19:695-704.
- 94) Treinies I, Paterson HF, Hooper S, Wilson R, Marshall CJ. Activated MEK stimulates expression of AP-1 components independently of phosphatidylinositol 3-kinase (PI3-kinase) but requires a PI3-kinase signal to stimulate DNA synthesis. *Mol Cell Biol*. 1999; 19:321-329.
- 95) Kinoshita Y, Nakata H, Kishi K, Kawanami C, Sawada M, Chiba T. Comparison of the signal transduction pathways activated by gastrin in enterochromaffin-like and parietal cells. *Gastroenterology*. 1998; 115:93-100.

- 1  
2  
3  
4  
5  
6  
7  
8  
9  
10  
11  
12  
13  
14  
15  
16  
17  
18  
19  
20  
21  
22  
23  
24  
25  
26  
27  
28  
29  
30  
31  
32  
33  
34  
35  
36  
37  
38  
39  
40  
41  
42  
43  
44  
45  
46  
47  
48  
49  
50  
51  
52  
53  
54  
55  
56  
57  
58  
59  
60  
61  
62  
63  
64  
65
- 96) Naumann M, Crabtree JE. Helicobacter pylori-induced epithelial cell signalling in gastric carcinogenesis. Trends Microbiol. 2004; 12:29-36
  - 97) Hisatsune J, Nakayama M, Isomoto H, Kurazono H, Mukaida N, Mukhopadhyay AK, et al. Molecular Characterization of Helicobacter pylori VacA Induction of IL-8 in U937 Cells Reveals a Prominent Role for p38MAPK in Activating Transcription Factor-2, cAMP Response Element Binding Protein, and NF- $\kappa$ B Activation. J. Immunol. 2008; 180:5017-5027
  - 98) Nakayama M, Kimura M, Wada A, Yahiro K, Ogushi K, Niidome T, et al. Helicobacter pylori VacA activates the p38/activating transcription factor 2-mediated signal pathway in AZ-521 cells. J. Biol. Chem. 2004; 279:7024-7028
  - 99) Lee IO, Kim JH, Choi YJ, Pillinger MH, Kim SY, Blaser MJ, et al. Helicobacter pylori CagA phosphorylation status determines the gp130-activated SHP2/ERK and JAK/STAT signal transduction pathways in gastric epithelial cells. Biol Chem. 2010; 285:16042-50.
  - 100) Keates S, Keates AC, Warny M, Peek RM Jr, Murray PG, Kelly CP. Differential activation of mitogen-activated protein kinases in AGS gastric epithelial cells by cagand cag Helicobacter pylori. J. Immunol. 1999; 163:5552–5559
  - 101) Berardi R, Morgese F, Torniai M, Savini A, Partelli S, Rinaldi S, et al. Medical treatment for gastro-entero-pancreatic neuroendocrine tumours. World J Gastrointest Oncol. 2016; 8:389-401.
  - 102) Svejda B, Kidd M, Kazberouk A, Lawrence B, Pfragner R, Modlin IM. Limitations in small intestinal neuroendocrine tumor therapy by mTor kinase inhibition reflect growth factor-mediated PI3K feedback loop activation via ERK1/2 and AKT. Cancer. 2011; 117:4141-54
  - 103) Yang Z, Xie C, Xu W, Liu G, Cao X, Li W, et al. Phosphorylation and inactivation of PTEN at residues Ser380/Thr382/383 induced by Helicobacter pylori promotes gastric epithelial cell survival through PI3K/Akt pathway. Oncotarget. 2015; 6:31916–26
  - 104) Tabassam FH, Graham DY, Yamaoka Y. Helicobacter pylori-associated regulation of forkhead transcription factors FoxO1/3a in human gastric cells. Helicobacter. 2012; 17:193-202.
  - 105) Valenzuela-Valderrama M, Cerda-Opazo P, Backert S, González MF, Carrasco-Véliz N, Jorquera-Cordero C, et al. The helicobacter pylori urease virulence factor is required for the induction of hypoxia-induced factor-1 $\alpha$  in Gastric Cells. Cancers. 2019; 11:799.
  - 106) Wang H, Chen Y, Fernandez-Del Castillo C, Yilmaz O, Deshpande V. Heterogeneity in signalling pathways of gastroenteropancreatic neuroendocrine tumors: A critical look at notch signaling pathway. Mod. Pathol. 2013; 26:139-147.
  - 107) Liu T, He W, Li Y. Helicobacter pylori infection of gastric epithelial cells affects NOTCH pathway in vitro. Dig Dis Sci. 2016; 61:2516-21.
  - 108) Kim JT, Li J, Jang ER, Gulhati P, Rychahou PG, Napier DL, et al. Deregulation of Wnt/ $\beta$ -catenin signaling through genetic or epigenetic alterations in human neuroendocrine tumors. Carcinogenesis. 2013; 34:953-961.
  - 109) Su MC, Wang CC, Chen CC, Hu RH, Wang TH, Kao HL, et al. Nuclear translocation of beta-catenin protein but absence of beta-catenin and APC mutation in gastrointestinal carcinoid tumor. Ann Surg Oncol. 2006; 13:1604-9.
  - 110) Fujimori M, Ikeda S, Shimizu Y, Okajima M, Asahara T. Accumulation of beta-catenin protein and mutations in exon 3 of beta-catenin gene in gastrointestinal carcinoid tumor. Cancer Res. 2001 61:6656-9.
  - 111) Bottarelli L, Azzoni C, Pizzi S, D'Adda T, Silini EM, Bordi C et al. Adenomatous polyposis coli gene involvement in ileal enterochromaffin cell neuroendocrine neoplasms. Human Pathology. 2013; 44:2736–42.
  - 112) Franco AT, Israel DA, Washington MK, Krishna U, Fox JG, Rogers AB, et al. Activation of beta-catenin by carcinogenic Helicobacter pylori. Proc Natl Acad Sci U S A. 2005; 102:10646-51.

- 1  
2  
3  
4  
5  
6  
7  
8  
9  
10  
11  
12  
13  
14  
15  
16  
17  
18  
19  
20  
21  
22  
23  
24  
25  
26  
27  
28  
29  
30  
31  
32  
33  
34  
35  
36  
37  
38  
39  
40  
41  
42  
43  
44  
45  
46  
47  
48  
49  
50  
51  
52  
53  
54  
55  
56  
57  
58  
59  
60  
61  
62  
63  
64  
65
- 113) Nagy TA, Wroblewski LE, Wang D, Piazuelo MB, Delgado A, Romero-Gallo J, et al.  $\beta$ -Catenin and p120 mediate PPAR $\delta$ -dependent proliferation induced by *Helicobacter pylori* in human and rodent epithelia. *Gastroenterology*. 2011; 141:553–564.
  - 114) Ito K, Chuang LS, Ito T, Chang TL, Fukamachi H, Salto-Tellez M, et al. Loss of Runx3 is a key event in inducing precancerous state of the stomach. *Gastroenterology*. 2011; 140:1536–46e8
  - 115) Nakayama M, Hisatsune J, Yamasaki E, Isomoto H, Kurazono H, Hatakeyama M, et al. *Helicobacter pylori* VacA-induced inhibition of GSK3 through the PI3K/Akt signaling pathway. *J Biol Chem*. 2009; 284:1612-9.
  - 116) Schumacher MA, Donnelly JM, Engevik AC, Xiao C, Yang L, Kenny S, et al. Gastric Sonic Hedgehog acts as a macrophage chemoattractant during the immune response to *Helicobacter pylori*. *Gastroenterology*. 2012; 142:1150-59.e6.
  - 117) Liu N, Zhou N, Chai N, Liu X, Jiang H, Wu Q, et al. *Helicobacter pylori* promotes angiogenesis depending on Wnt/beta-catenin-mediated vascular endothelial growth factor via the cyclooxygenase-2 pathway in gastric cancer. *BMC Cancer*. 2016; 16:321.
  - 118) Papageorgis P. TGFbeta signaling in tumor initiation, epithelial to mesenchymal transition and metastasis. *J.Oncol*. 2015; 2015:587193.
  - 119) Samanta D, Datta PK. Alterations in the Smad pathway in human cancers. *Front Biosci (Landmark Ed)*. 2012; 17:1281-93.
  - 120) Akhurst RJ, Hata A. Targeting the TGFbeta signalling pathway in disease. *Nat Rev Drug Discov*. 2012; 11:790–811.
  - 121) Xu X, Zhu L. MiR-124 promotes proliferation and differentiation of osteoblasts via BMP/TGF- $\beta$  signaling pathway. *Minerva Endocrinol*. 2019.
  - 122) Gilbert JA, Adhikari LJ, Lloyd RV, Rubin J, Haluska P, Carboni JM, et al. Molecular markers for novel therapies in neuroendocrine (carcinoid) tumors. *Endocr Relat Cancer*. 2010; 17:623-36.
  - 123) Roland CL, Starker LF, Kang Y, Chatterjee D, Estrella J, Rashid A, et al. Surgery. Loss of DPC4/SMAD4 expression in primary gastrointestinal neuroendocrine tumors is associated with cancer-related death after resection. 2017; 161:753-9.
  - 124) Banck MS, Kanwar R, Kulkarni AA, Boora GK, Metge F, Kipp BR, et al. The genomic landscape of small intestine neuroendocrine tumors. *J Clin Invest*. 2013; 123:2502-08.
  - 125) Kidd M, Modlin IM, Pfragner R, Eick GN, Champaneria MC, Chan AK, et al. Small bowel carcinoid (enterochromaffin cell) neoplasia exhibits transforming growth factor-b1-mediated regulatory abnormalities including up-regulation of C-Myc and MTA1. *Cancer*. 2007; 109:2420-31.
  - 126) Rahimian G, Sanei MH, Shirzad H, Azadegan-Dehkordi F, Taghikhani A, et al. Virulence factors of *Helicobacter pylori* vacA increase markedly gastric mucosal TGF- $\beta$ 1 mRNA expression in gastritis patients. *Microb Pathog*. 2014; 67-68:1-7.
  - 127) Inoue K, Fry EA, Frazier DP. Transcription factors that interact with p53 and Mdm2. *Int J Cancer*. 2016; 138:1577-85.
  - 128) Zhao Y, Aguilar A, Bernard D, Wang S. Small-molecule inhibitors of the MDM2-p53 protein-protein interaction (MDM2 Inhibitors) in clinical trials for cancer treatment. *J Med Chem*. 2015; 58:1038-52.
  - 129) Brazina J, Svadlenka J, Macurek L, Andera L, Hodny Z, Bartek J et al. DNA damage-induced regulatory interplay between DAXX, p53, ATM kinase and Wip1 phosphatase. *Cell Cycle*. 2015; 14:375-87.
  - 130) Makuuchi R, Terashima M, Kusuhara M, Nakajima T, Serizawa M, Hatakeyama K, et al. Comprehensive analysis of gene mutation and expression profiles in neuroendocrine carcinomas of the stomach. *Biomed. Res*. 2017; 38:19-27.

- 1  
2  
3  
4  
5  
6  
7  
8  
9  
10  
11  
12  
13  
14  
15  
16  
17  
18  
19  
20  
21  
22  
23  
24  
25  
26  
27  
28  
29  
30  
31  
32  
33  
34  
35  
36  
37  
38  
39  
40  
41  
42  
43  
44  
45  
46  
47  
48  
49  
50  
51  
52  
53  
54  
55  
56  
57  
58  
59  
60  
61  
62  
63  
64  
65
- 131) Vijayvergia N, Boland PM, Handorf E, Gustafson KS, Gong Y, Cooper HS, et al. Molecular profiling of neuroendocrine malignancies to identify prognostic and therapeutic markers: A Fox Chase Cancer Center Pilot Study. *Br J Cancer*. 2016; 115:564-70.
  - 132) Hu W, Feng Z, Modica I, Klimstra DS, Song L, Allen PJ, et al. Gene amplifications in well-differentiated pancreatic neuroendocrine tumors inactivate the p53 pathway. *Genes Cancer*. 2010; 1:360-368.
  - 133) Shin JU, Lee CH, Lee KT, Lee JK, Lee KH, Kim KM, et al. Prognostic significance of ATM and cyclin B1 in pancreatic neuroendocrine tumor. *Tumour Biol*. 2012; 33:1645-51.
  - 134) Lee J, Sung CO, Lee EJ, Do IG, Kim HC, Yoon SH, et al. Metastasis of neuroendocrine tumors are characterized by increased cell proliferation and reduced expression of the ATM gene. *PLoS ONE*. 2012; 7:e34456.
  - 135) Luque EA, Tang LH, Bortecan KH, Kidd M, Miu K, Efstathiou JA, et al. Gastrin-regulated expression of p53 in transformed enterochromaffin-like cells in the african rodent mastomys. *J Clin Gastroenterol*. 1998; 27 Suppl 1:S116-24.
  - 136) Wei J, Nagy TA, Vilgelm A, Zaika E, Ogden SR, Romero-Gallo J, et al. Regulation of p53 tumor suppressor by *Helicobacter pylori* in gastric epithelial cells. *Gastroenterology*. 2010; 139:1333-43.
  - 137) Toller IM, Neelsen KJ, Steger M, Hartung ML, Hottiger MO, Stucki M, et al. Carcinogenic bacterial pathogen *Helicobacter pylori* triggers DNA double-strand breaks and a DNA damage response in its host cells. *Proc Natl Acad Sci U S A*. 2011 Sep; 108:14944-9.
  - 138) Casimiro MC, Crosariol M, Loro E, Li Z, Pestell RG. Cyclins and cell cycle control in cancer and disease. *Genes Cancer*. 2012; 3: 649–657.
  - 139) Cicens J, Valius M. The CDK inhibitors in cancer research and therapy. *J Cancer Res Clin Oncol*. 2011; 137:1409-18.
  - 140) Cicens J, Kalyan K, Sorokinas A, Jatulyte A, Valiunas D, Kaupinis A, et al. Highlights of the latest advances in research on CDK inhibitors. *Cancers (Basel)*. 2014; 6:2224-42.
  - 141) Malumbres M, Perez de Castro I. Aurora kinase A inhibitors: promising agents in antitumoural therapy. *Expert Opin Ther Targets*. 2014; 18:1377-93.
  - 142) Law ME, Corsino PE, Narayan S, Law BK. Cyclin-dependent kinase inhibitors as anticancer therapeutics. *Mol Pharmacol*. 2015; 88:846-52.
  - 143) Malinkova V, Vylicil J, Krystof V. Cyclin-dependent kinase inhibitors for cancer therapy: a patent review (2009–2014). *Expert Opin Ther Pat*. 2015; 25:953-70.
  - 144) Tang LH, Contractor T, Clausen R, Klimstra DS, Du YC, Allen PJ, et al. Attenuation of the retinoblastoma pathway in pancreatic neuroendocrine tumours because of increased cdk4/cdk6. *Clin Cancer Res*. 2012; 18:4612-20.
  - 145) Francis JM, Kiezun A, Ramos AH, Serra S, Pedamallu CS, Qian ZR, et al. Somatic mutation of CDKN1B in small intestine neuroendocrine tumors. *Nat Genet*. 2013; 45:1483-86.
  - 146) Karpathakis A, Dibra H, Pipinikas C, Feber A, Morris T, Francis J, et al. Prognostic impact of novel molecular subtypes of small intestinal neuroendocrine tumour. *Clin Cancer Res*. 2016; 22:250-8.
  - 147) Grabowski P, Schrader J, Wagner J, Horsch D, Arnold R, Arnold CN, Georgieva I, Stein H, Zeitz M, Daniel PT, et al. Loss of nuclear p27 expression and its prognostic role in relation to cyclin E and p53 mutation in gastroenteropancreatic neuroendocrine tumours. *Clinical Cancer Research* 2008 14 7378–7384. (<https://doi.org/10.1158/1078-0432.CCR-08-0698>)
  - 148) Yachida S, Vakiani E, White CM, Zhong Y, Saunders T, Morgan R et al. Small cell and large cell neuroendocrine carcinomas of the pancreas are genetically similar and distinct from well-differentiated pancreatic neuroendocrine tumors. *Am. J. Surg. Pathol*. 2012, 36, 173–184.

- 149) Zhang T, Tang L, Kidd M, Lauffer J, and Modlin I. Gastric enterochromaffin-like (ECL) transformation is associated with increased expression of the G1 cell cycle regulators cyclin D1 and cdk4. *Gastroenterology* 114: G2932, 1998
- 150) Kidd M, Hinoue T, Eick G, Lye KD, Mane SM, Wen Y, et al. Global expression analysis of ECL cells in *Mastomys natalensis* gastric mucosa identifies alterations in the AP-1 pathway induced by gastrin-mediated transformation. *Physiol Genomics*. 2004; 20:131-42.
- 151) Hönig A, Witte F, Mirecka J, Binder C, Schauer A. *Helicobacter pylori*-induced hyperproliferation: relevance for gastric cancer development in connection with mutagenic factors. *Anticancer Res*. 2000; 20:1641-1648
- 152) Suzuki N, Wakasugi M, Nakaya S, Okada K, Mochida R, Sato M, et al. Production and application of new monoclonal antibodies specific for a fecal *Helicobacter pylori* antigen. *Clin Diagn Lab Immunol*. 2002; 9:75-78.
- 153) Byun SW, Chang YJ, Chung IS, Moss SF, Kim SS. *Helicobacter pylori* decreases p27 expression through the delta opioid receptor-mediated inhibition of histone acetylation within the p27 promoter. *Cancer Lett*. 2012; 326:96-104.
- 154) Bahnassy AA, Helal TE, El-Ghazawy IM, Samaan GF, Galal El-Din MM, et al. The role of E-cadherin and Runx3 in *helicobacter pylori* - associated gastric carcinoma is achieved through regulating P21waf and P27 expression. *Cancer Genet*. 2018;228-229:64-72.
- 155) Eguchi H, Carpentier S, Kim SS, Moss SF. P27kip1 regulates the apoptotic response of gastric epithelial cells to *Helicobacter pylori*. *Gut*. 2004; 53:797-804.
- 156) La Rosa S, Rigoli E, Uccella S, Chiaravalli AM, Capella C. CDX2 as a marker of intestinal EC-cells and related well-differentiated endocrine tumors. *Virchows Arch*. 2004; 445:248-254.
- 157) Srivastava A, Hornick JL. Immunohistochemical staining for CDX-2, PDX-1, NESP-55 and TTF-1 can help distinguish gastrointestinal carcinoid tumors from pancreatic endocrine and pulmonary carcinoid tumors. *Am J Surg Pathol*. 2009; 33:626-632.
- 158) Herman Mahečić D, Cigrovski Berković M, Zjačić-Rotkvić V, Čačev T, Kapitanović S, Ulamec M. Inflammation-related cytokines and their roles in gastroenteropancreatic neuroendocrine neoplasms. *Bosn J Basic Med Sci*. 2020.
- 159) Kinoshita H, Hirata Y, Nakagawa H, Sakamoto K, Hayakawa Y, Takahashi R et al. Interleukin-6 mediates epithelial-stromal interactions and promotes gastric tumorigenesis. *PLoS One*. 2013;8:e60914
- 160) Hatakeyama M. *Helicobacter pylori* CagA and gastric cancer: a paradigm for hit-and-run carcinogenesis. *Cell Host Microbe*. 2014;15:306-316.
- 161) Wang TC, Goldenring JR. Inflammation intersection: gp130 balances gut irritation and stomach cancer. *Nat Med*. 2002;8:1080-1082.
- 162) Tebbutt NC, Giraud AS, Inglese M, Jenkins B, Waring P, Clay FJ, et al. Reciprocal regulation of gastrointestinal homeostasis by SHP2 and STAT-mediated trefoil gene activation in gp130 mutant mice. *Nat Med*. 2002;8:1089-97.
- 163) Satoh K, Mutoh H, Eda A, Yanaka I, Osawa H, Honda S, et al. Aberrant expression of CDX2 in the gastric mucosa with and without intestinal metaplasia: effect of eradication of *Helicobacter pylori*. *Helicobacter*. 2002; 7:192-8.
- 164) Liu B, Qu L, Yan S. Cyclooxygenase-2 promotes tumor growth and suppresses tumor immunity. *Cancer Cell Int*. 2015; 15:106.
- 165) Kim HS, Lee HS, Kim WH. Clinical significance of protein expression of cyclooxygenase-2 and somatostatin receptors in gastroenteropancreatic neuroendocrine tumors. *Cancer Res Treat*. 2011; 43:181-188.

- 166) Fu S, Ramanujam KS, Wong A, Fantry GT, Drachenberg CB, James SP, et al. Increased expression and cellular localization of inducible nitric oxide synthase and cyclooxygenase 2 in *Helicobacter pylori* gastritis. *Gastroenterology*. 1999; 116:1319-29.
- 167) Pero R, Peluso S, Angrisano T, Tuccillo C, Sacchetti S, Keller S, et al. Chromatin and DNA methylation dynamics of *Helicobacter pylori*-induced COX-2 activation. *Int J Med Microbiol*. 2011; 301:140-9.
- 168) Zhang H, Ding C, Suo Z, Kang Y. Effect of *Helicobacter pylori* on cyclooxygenase-2 and inducible nitric oxide synthase in patients with gastric precancerous lesions and its clinical significance. *Exp Ther Med*. 2015; 9:2364-2368.
- 169) Bojesen, RD, Riis LB, Hogdall E, Nielsen OH, Jess T. Inflammatory bowel disease and small bowel cancer risk, clinical characteristics, and histopathology: a population-based study. *Clin. Gastroenterol. Hepatol*. 2017;15: 1900–1907.
- 170) Algaba, A., Guerra, I., Castano, A., de la Poza, G., Castellano, V.M., Lopez, M., et al. Risk of cancer, with special reference to extra-intestinal malignancies, in patients with inflammatory bowel disease. *World J. Gastroenterol*. 2013; 19: 9359–9365.
- 171) Lal P, Saleh MA, Khoudari G, Gad MM, Mansoor E, Isenberg G et al. Epidemiology of large bowel carcinoid tumors in the USA: a population-based national study. *Dig Dis Sci*. 2020; 65:269- 275.
- 172) Sciola V, Massironi S, Conte D, Caprioli F, Ferrero S, Ciafardini C, et al. Plasma chromogranin a in patients with inflammatory bowel disease. *Inflamm Bowel Dis*. 2009; 15:867–871.
- 173) Derikx LA, Vierdag WM, Kievit W, Bosch S, Hoentjen F, Nagtegaal ID. Is the prevalence of colonic neuroendocrine tumors increased in patients with inflammatory bowel disease? *Int J Cancer*. 2016; 139:535- 542.
- 174) Praticò C, Rizzello F, Fornarini GS, Calafiore A, Calabrese C, Campieri M, et al. Four cases of carcinoid tumour in Crohn's disease: coincidence or correlation? *Int J Colorectal Dis*. 2013; 28:1743-5.
- 175) Wong M, Larson BK, Dhall D. Neuroendocrine proliferations in inflammatory bowel disease: differentiating neuroendocrine tumours from neuroendocrine cell micronests. *Histopathology* 2019; 74: 415–423.
- 176) Prosberg M, Bendtsen F, Vind I, Petersen AM, Gluud LL. The association between the gut microbiota and the inflammatory bowel disease activity: a systematic review and meta-analysis. *Scand J Gastroenterol*. 2016; 51:1407-1415.
- 177) Jostins L, Ripke S, Weersma RK, Duerr RH, McGovern DP, Hui KY et al. Host-microbe interactions have shaped the genetic architecture of inflammatory bowel disease. *Nature*. 2012; 491:119- 124.
- 178) Frank DN, St Amand AL, Feldman RA, Boedeker EC, Harpaz N, Pace NR. Molecular-phylogenetic characterization of microbial community imbalances in human inflammatory bowel diseases. *Proc Natl Acad Sci U S A*. 2007; 104:13780- 13785.
- 179) Nell S, Suerbaum S, Josenhans C. The impact of the microbiota on the pathogenesis of IBD: lessons from mouse infection models. *Nat Rev Microbiol* 2010; 8: 564–577.
- 180) Ni J, Wu JD, Albenberg L, Tomov VT. Gut microbiota and IBD: causation or correlation? *Nat Rev Gastroenterol Hepatol*. 2017; 14: 573–584.
- 181) Machiels K, Joossens M, Sabino J, De Preter V, Arijs I, Eeckhaut V et al. A decrease of the butyrate-producing species *Roseburia hominis* and *Faecalibacterium prausnitzii* defines dysbiosis in patients with ulcerative colitis. *Gut*. 2014; 63:1275- 1283.
- 182) Manichanh C, Rigottier-Gois L, Bonnaud E, Gloux K, Pelletier E, et al. Reduced diversity of faecal microbiota in Crohn's disease revealed by a metagenomic approach *Gut* 2006; 55:205–211.



- 183) Sokol H, Pigneur B, Watterlot L, Lakhdari O, Bermúdez-Humarán LG, Gratadoux JJ, et al. *Faecalibacterium prausnitzii* is an anti-inflammatory commensal bacterium identified by gut microbiota analysis of Crohn disease patients. *Proc Natl Acad Sci U S A*. 2008;105 :16731-16736.
- 184) Dörffel Y, Pavel M, Loening-Baucke V, Swidsinski A. Common biostructure of the fecal flora in celiac disease, Crohn's disease, and carcinoid tumors. *Inflamm Bowel Dis*. 2008; 14:1613-1614.
- 185) Varela E, Manichanh C, Gallart M, Torrejón A, Borrueal N, Casellas F et al. Colonization by *Faecalibacterium prausnitzii* and maintenance of clinical remission in patients with ulcerative colitis. *Aliment Pharmacol Ther*. 2013; 38:151-61.
- 186) Ferreira-Halder CV, Faria AVS, Andrade SS. Action and function of *Faecalibacterium prausnitzii* in health and disease. *Best Pract Res Clin Gastroenterol*. 2017; 31:643-648.
- 187) Ma J, Sun L, Liu Y, Ren H, Shen Y, Bi F, Zhang T et al. Alter between gut bacteria and blood metabolites and the anti-tumor effects of *Faecalibacterium prausnitzii* in breast cancer. *BMC Microbiol*. 2020; 20:82.
- 188) Chaput N, Lepage P, Coutzac C, Soularue E, Le Roux K, Monot C et al. Baseline gut microbiota predicts clinical response and colitis in metastatic melanoma patients treated with ipilimumab. *Ann Oncol*. 2017; 28:1368-1379
- 189) Zuo T, Ng SC. The gut microbiota in the pathogenesis and therapeutics of inflammatory bowel disease. *Front Microbiol*. 2018; 9:2247.
- 190) Sokol H, Leducq V, Aschard H, Pham HP, Jegou S, Landman C, et al. Fungal microbiota dysbiosis in IBD. *Gut*. 2017; 66:1039-1048.
- 191) Tamagno G, Bennett A, Ivanovski I. Lights and darks of neuroendocrine tumors of the appendix. *Minerva Endocrinol*. 2020 Jul 23. doi: 10.23736/S0391-1977.20.03206-X. Online ahead of print.

## Figure legends

**Fig. 1** Gut microorganisms can alter the resistance to cell death, and proliferative signalling, by affecting genomic stability, damaging the DNA, and through a microbial competition with others microorganisms. These mechanisms can contribute to carcinogenesis through the increase in mutational events.

**Fig. 2** An important target of cancer-associated microbes is the  $\beta$ -catenin signalling. The microbes bind E-cadherin on colonic epithelial cells within a disrupted barrier, and trigger  $\beta$ -catenin activation, resulting in dysregulated cell growth.

**Fig. 3** The loss of boundaries between host and microbe and the activation of chronic inflammation via NF-kB and STAT3 signalling promote carcinogenesis.

**Fig. 4** *Helicobacter pylori*-associated atrophic gastritis. A complete loss of oxyntic glands is evident (A) (haematoxylin eosin, 200x magnification) with a linear (short arrow) and nodular (long arrow) ECL cell neuroendocrine hyperplasia (B) (immunohistochemistry Chromogranin A, 200x magnification, in an adjacent section of A).

**Fig. 5** Common cellular signalling pathways involved in GEP NENs and perturbed after HP colonization.

1  
2  
3  
4  
5  
6  
7  
8  
9  
10  
11  
12  
13  
14  
15  
16  
17  
18  
19  
20  
21  
22  
23  
24  
25  
26  
27  
28  
29  
30  
31  
32  
33  
34  
35  
36  
37  
38  
39  
40  
41  
42  
43  
44  
45  
46  
47  
48  
49  
50  
51  
52  
53  
54  
55  
56  
57  
58  
59  
60  
61  
62  
63  
64  
65

## **Acknowledgements**

This review is part of the ‘Neuroendocrine Tumors Innovation Knowledge and Education’ project led by Prof. Annamaria Colao and Prof. Antongiulio Faggiano, which aims at increasing the knowledge on neuroendocrine tumors.

We would like to acknowledge all the Collaborators of the “NIKE” project:

Manuela Albertelli - Genova; Barbara Altieri – Wurzburg; Filomena Bottiglieri - Napoli; Federica De Cicco - Napoli; Sergio Di Molfetta - Bari; Giuseppe Fanciulli - Sassari; Tiziana Feola - Roma; Diego Ferone - Genova; Francesco Ferrà - Messina; Marco Gallo - Torino; Elisa Giannetta - Roma; Federica Grillo - Genova; Erika Grossrubatscher - Milano; Elia Guadagno - Napoli; Valentina Guarnotta - Palermo; Andrea M. Isidori - Roma; Andrea Lania - Milano; Andrea Lenzi - Roma; Fabio Lo Calzo - Avellino; Pasquale Malandrino - Catania; Erika Messina - Messina; Roberta Modica - Napoli; Giovanna Muscogiuri - Napoli; Luca Pes - Sassari; Genoveffa Pizza - Avellino; Riccardo Pofi - Roma; Giulia Puliani - Roma; Carmen Rainone - Napoli; Laura Rizza - Roma; Manila Rubino - Milano; Rosa Maria Ruggieri - Messina; Franz Sesti – Roma; Mary Anna Venneri - Roma; Maria Chiara Zatelli - Ferrara.

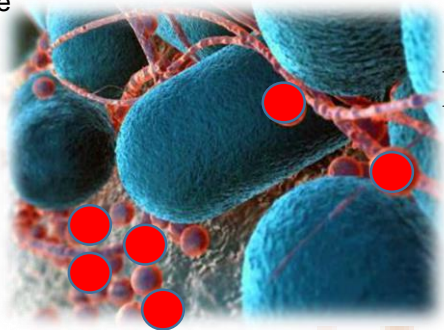
## **Conflict of interest statement**

A. Colao has received consultant fees from Novartis and Ipsen. A. Faggiano has received consultant fee from Triple AAA and Ipsen. G. Vitale has received consultant fees from Novartis.

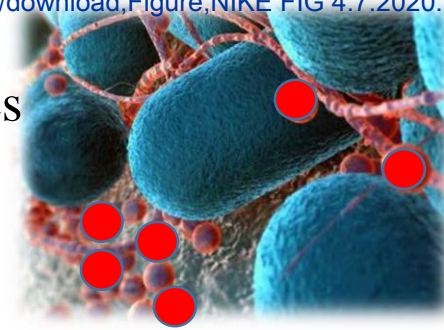
## **Funding source**

This work was supported by the Italian Ministry of Education, University and Research (MIUR): PRIN 2017Z3N3YC.

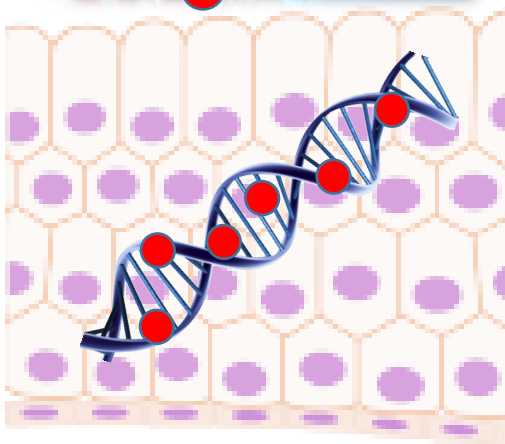
# Damage of the DNA



Microbes and toxin

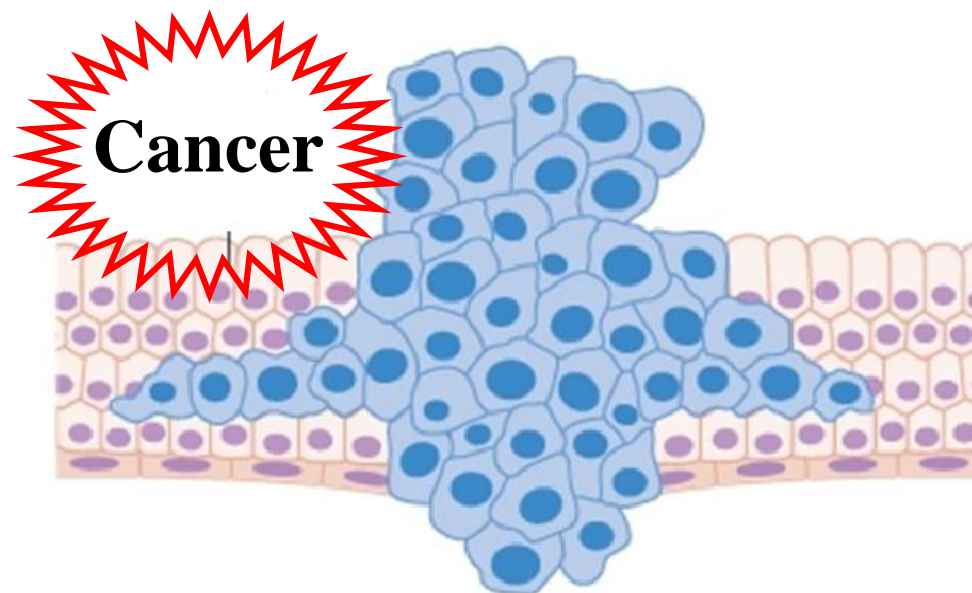
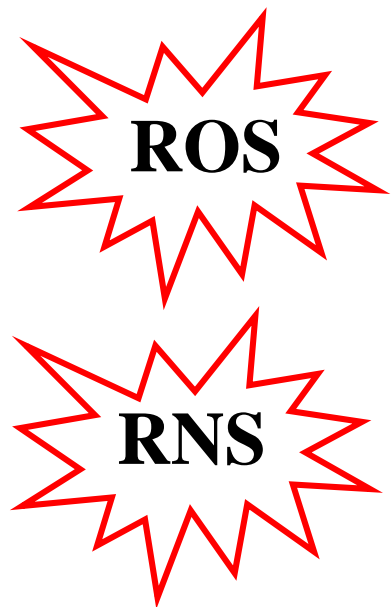
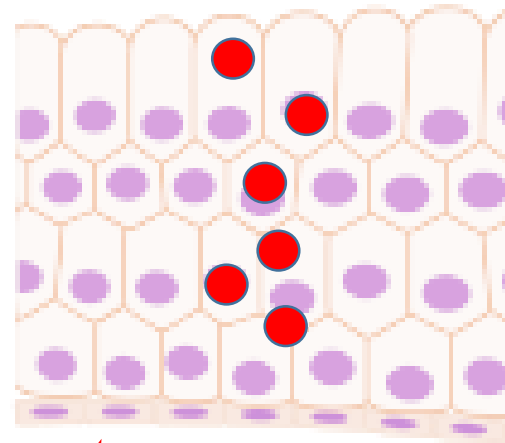


Microbes and toxin



Bacterial toxins can directly damage host DNA

Bacteria indirectly damage DNA through the host production of ROS and RNS.



When DNA damage exceeds host cell repair capacity, cell death or cancer-enabling mutations occur

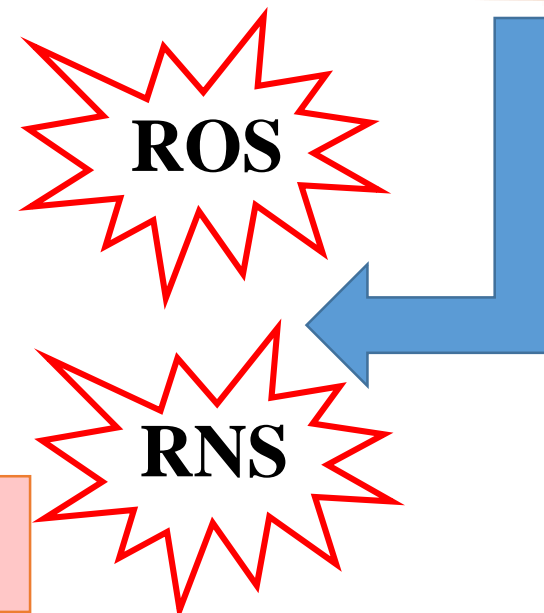
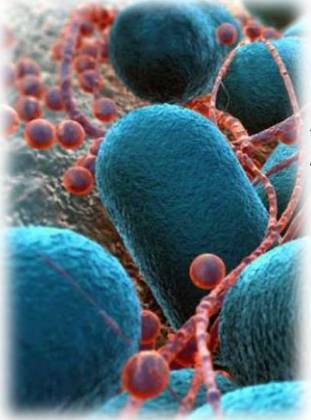


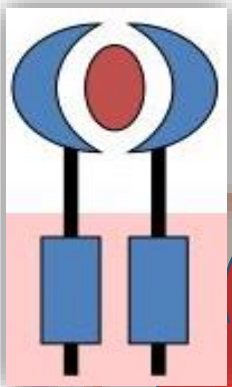
Fig.1



**Microbes**

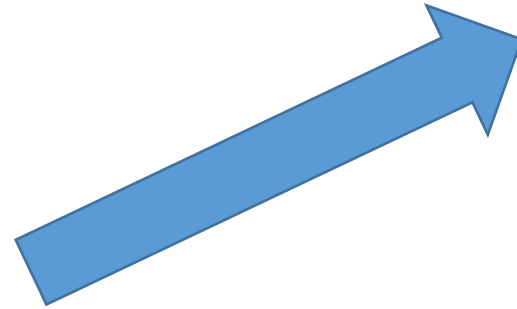
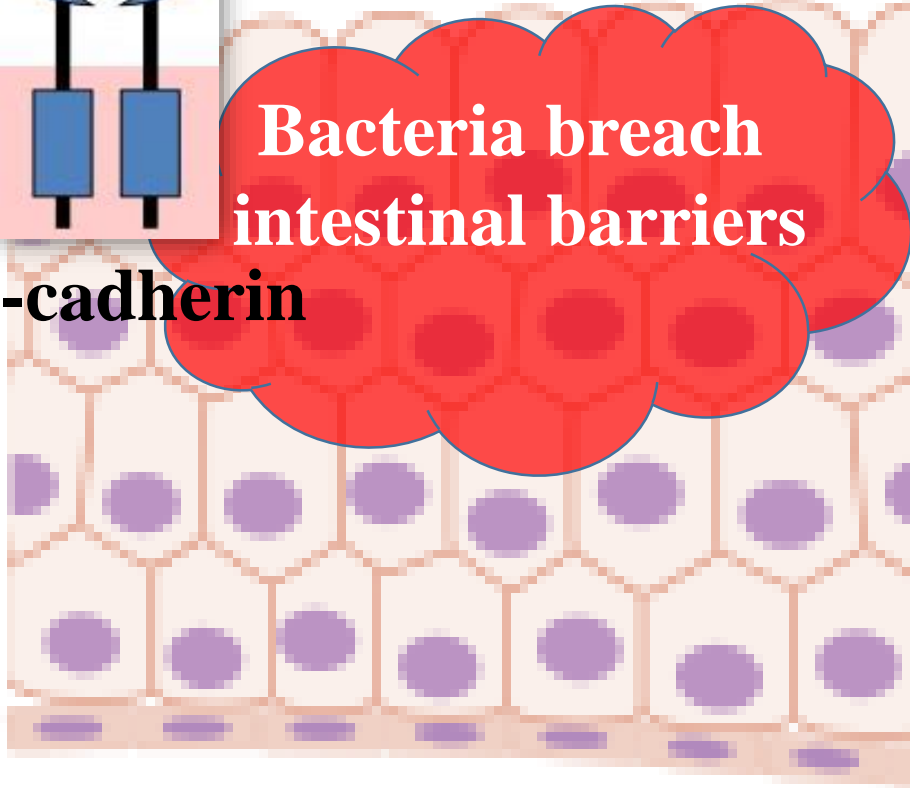
# $\beta$ -Catenin signaling alterations

Microbes bind E-cadherin on colonic epithelial cells within a disrupted barrier, and trigger  $\beta$ -catenin activation.



**E-cadherin**

**Bacteria breach intestinal barriers**



$\beta$ -Catenin



Dysregulated cell growth

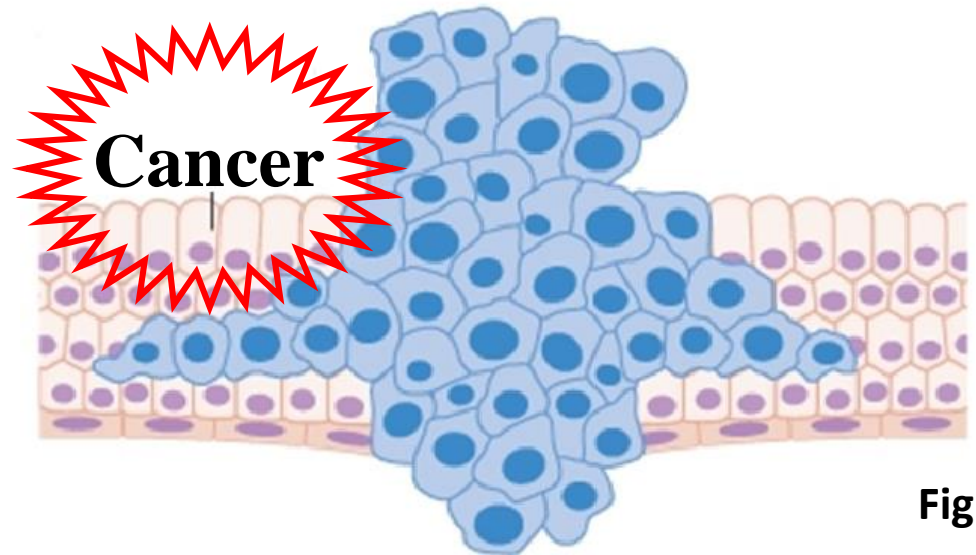
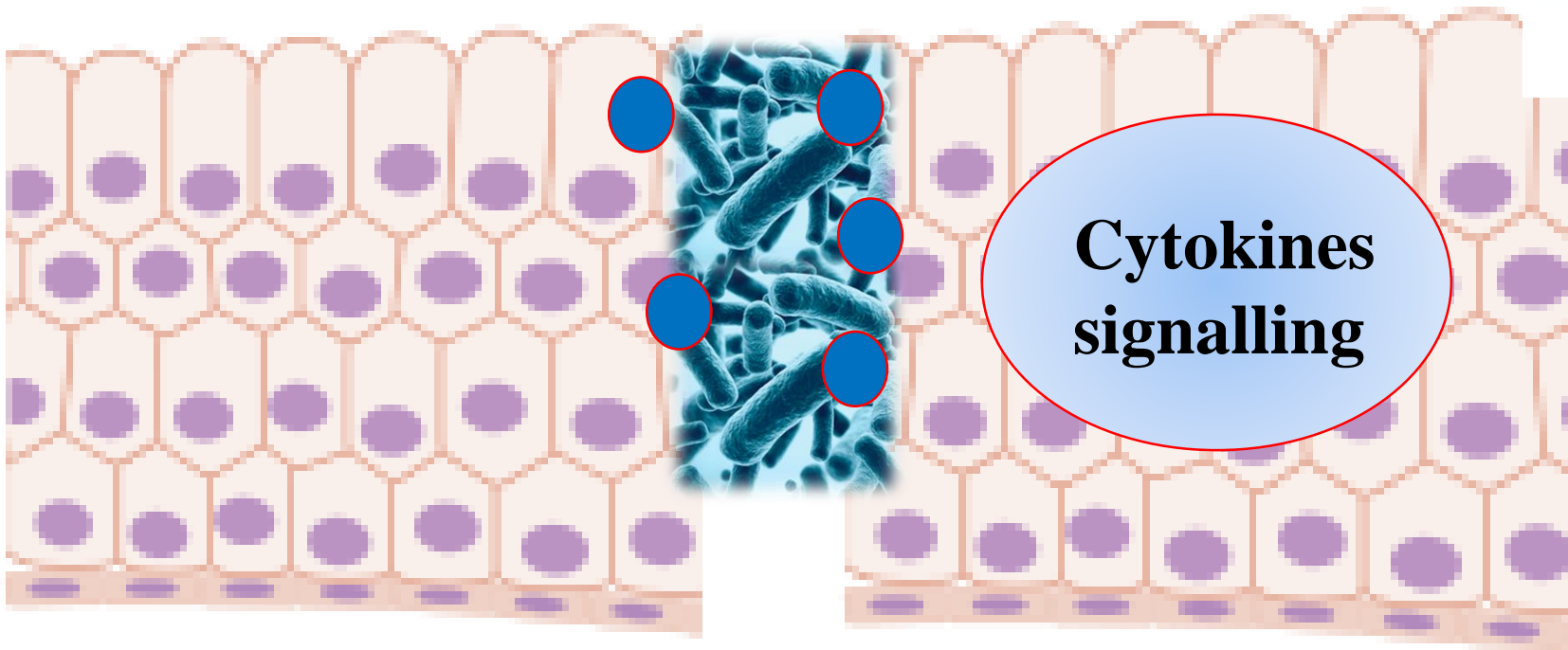


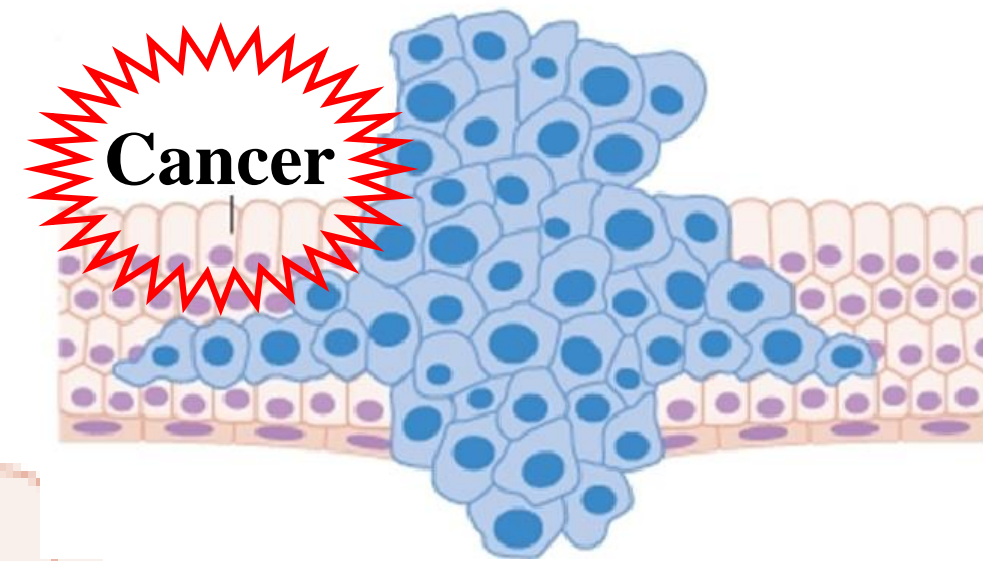
Fig.2

# Pro-inflammatory pathways

## Barrier breach



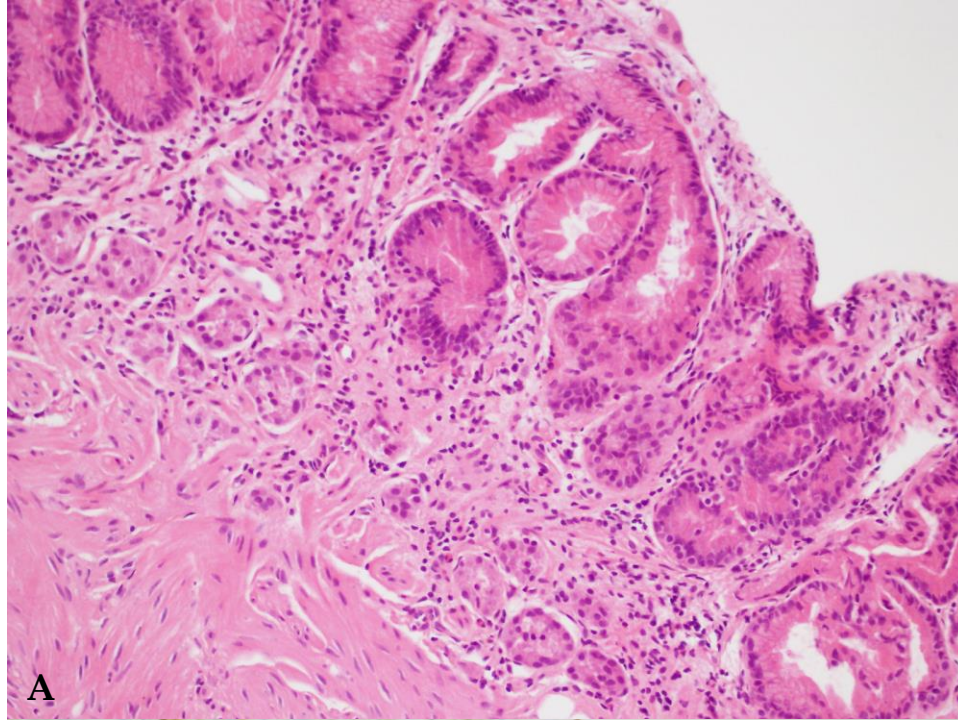
Pro-inflammatory pathways are activated, contributing to cancer pathogenesis and progression



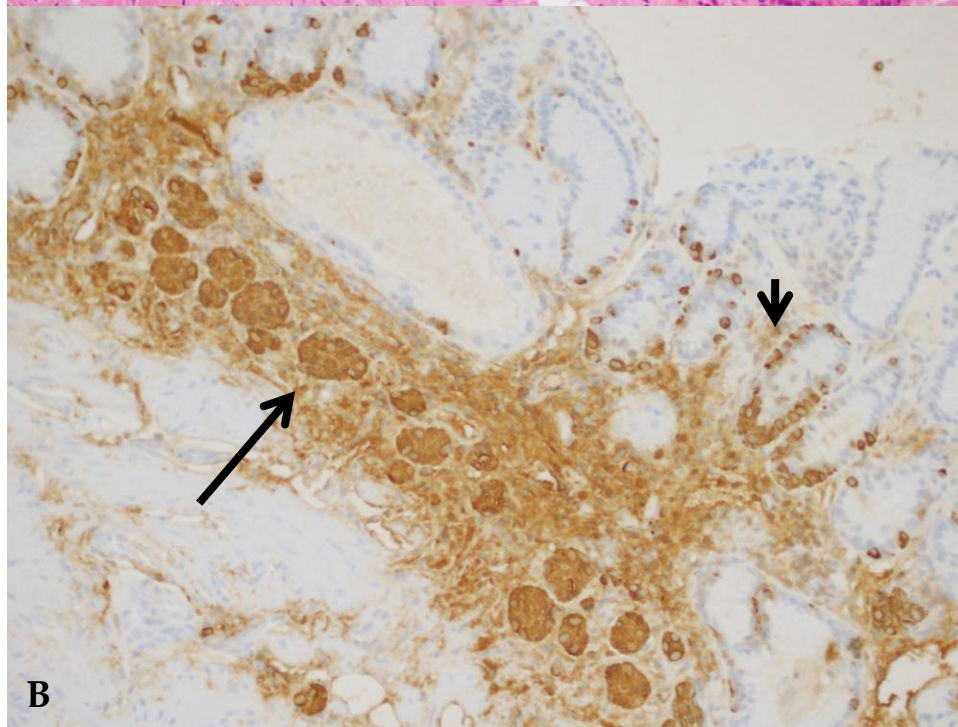
Chronic inflammation mediated by NF- $\kappa$ B and STAT3 signalling



Fig.3

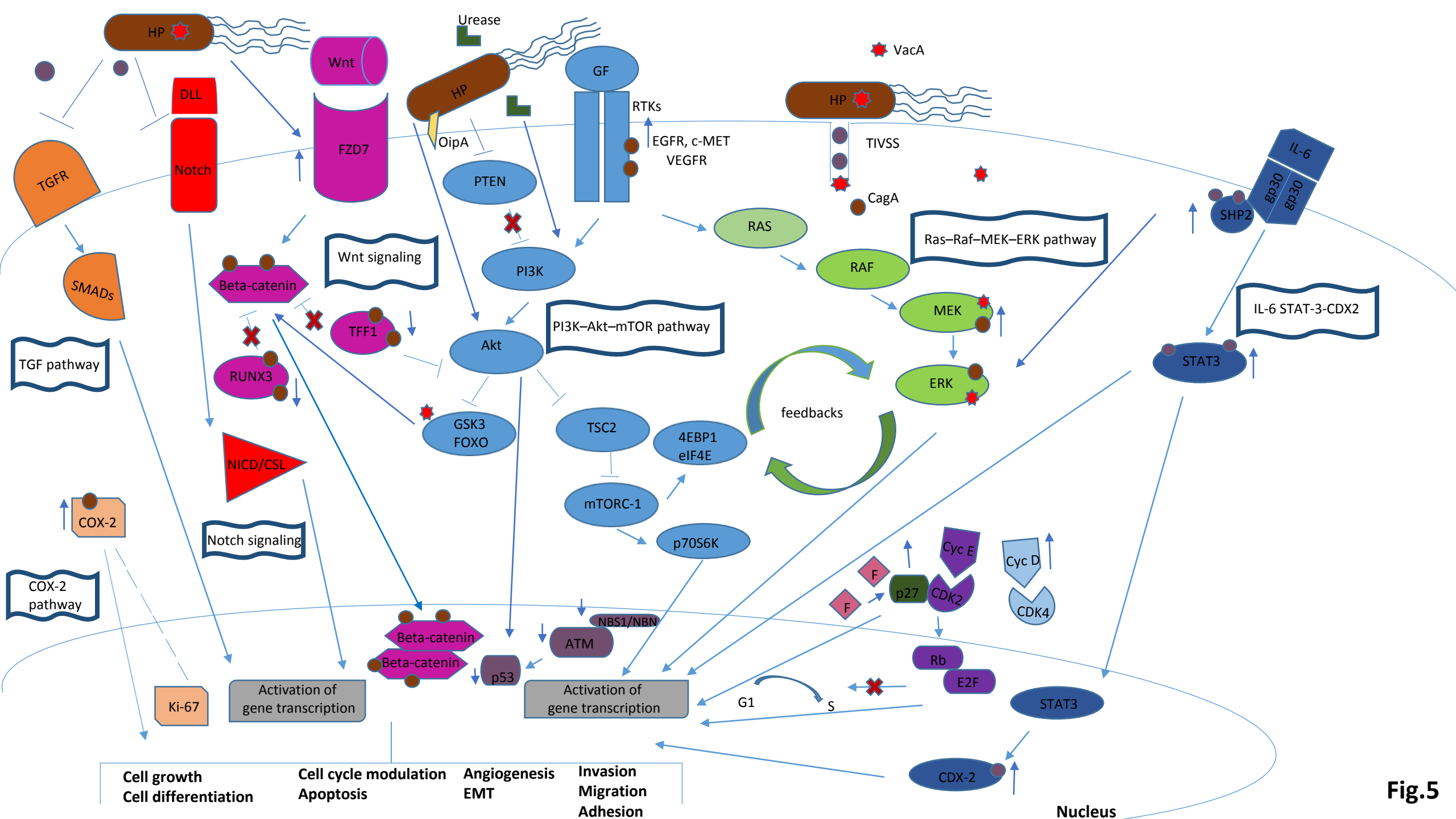


A



B

Fig.4



**Fig.5**