

THE EFFECT ON FISHER-KPP PROPAGATION IN A CYLINDER WITH FAST DIFFUSION ON THE BOUNDARY*

LUCA ROSSI[†], ANDREA TELLINI[‡], AND ENRICO VALDINOCI[§]

Abstract. In this paper we consider a reaction-diffusion equation of Fisher-KPP type inside an infinite cylindrical domain in \mathbb{R}^{N+1} , coupled with a reaction-diffusion equation on the boundary of the domain, where potentially fast diffusion is allowed. We will study the existence of an asymptotic speed of propagation for solutions of the Cauchy problem associated with such a system, as well as the dependence of this speed on the diffusivity at the boundary and the amplitude of the cylinder. When $N = 1$ the domain reduces to a strip between two straight lines. This models the effect of two roads with fast diffusion on a strip-shaped field bounded by them.

Key words. KPP equations, reaction-diffusion systems, different spatial dimensions, asymptotic speed of spreading

AMS subject classifications. 35K57, 35B40, 35K40, 35B53

DOI. 10.1137/17M1125388

1. Introduction. Recently, in [3, 4, 5], the authors introduced a model to describe the effect of a road with potentially fast diffusion in a field which was assumed to be the (half) plane. The scope of the present paper is to provide a rigorous mathematical framework for the problem of the propagation of biological species or substances in presence of more general domains, with potentially fast diffusion on their boundary.

In particular we will consider the case of diffusion inside a $(N + 1)$ -dimensional cylinder $\Omega = \mathbb{R} \times B_N(0, R)$, where $B_N(0, R)$ is the N -dimensional ball of radius $R > 0$ centered at the origin. In this case the walls, which may favor the process of diffusion, play the role of a *pipe*.

In the specific case $N = 1$, this situation models *two parallel roads* of potentially fast diffusion bounding a *field* described by a two-dimensional slab $\Omega = \mathbb{R} \times (-R, R)$. Such spreading heterogeneities have been tracked in several real environments, such as the diffusion of wolves along seismic lines in the Western Canadian Forest [11] or the early spreading of HIV among humans in Democratic Republic of Congo [7], just to mention a few. (See [3] for a more detailed list of empirical observations.)

*Received by the editors April 12, 2017; accepted for publication (in revised form) August 22, 2017; published electronically November 16, 2017.

<http://www.siam.org/journals/sima/49-6/M112538.html>

Funding: The work of the authors was supported by the Spanish Ministry of Economy and Competitiveness under projects MTM2012-30669 and MTM2015-65899-P, grant BES-2010-039030, and contract Juan de la Cierva Incorporación IJCI-2015-25084, by the European Research Council under the European Union’s Seventh Framework Programme (FP/2007-2013)/ERC grants 277749 EP-SILON “Elliptic Pde’s and Symmetry of Interfaces and Layers for Odd Nonlinearities” and n.321186-ReaDi “Reaction-Diffusion Equations, Propagation and Modelling,” by the Institute of Complex Systems of Paris Île-de-France under DIM 2014 “Diffusion heterogeneities in different spatial dimensions and applications to ecology and medicine,” by the Research Project “Stabilità asintotica di fronti per equazioni paraboliche” of the University of Padova (2011), by PRIN grant 201274FYK7 “Aspetti variazionali e perturbativi nei problemi differenziali nonlineari,” and by the French National Research Agency: NONLOCAL project (ANR-14-CE25-0013).

[†]Centre d’Analyse et de Mathématiques Sociales, École des Hautes Études en Sciences Sociales, 75244 Paris Cedex 13, France (luca.rossi@ehess.fr).

[‡]Departamento de Matemáticas, Universidad Autónoma de Madrid, Campus de Cantoblanco, 28049 Madrid, Spain (andrea.tellini@uam.es).

[§]School of Mathematics and Statistics, University of Melbourne, Parkville, VIC 3010, Australia and Dipartimento di Matematica, Università di Milano, Via Cesare Saldini 50, 20133 Milan, Italy (enrico.v@unimelb.edu.au).

In our model, roughly speaking, a species, whose density will be denoted by v , occupies the region Ω , where it reproduces, diffuses, and dies, according to a logistic law. The logistic law is governed by a function f . (As a model case, the reader may think about the case of $f(v) = v(1 - v)$, but more general logistic laws will be allowed as well in this paper.)

The population diffuses randomly inside the field, with a diffusion coefficient d . When the individuals of the species, driven by their random movement, hit the boundary of Ω , a proportion ν of them decides to use it to keep diffusing, with a possibly different diffusion coefficient D . We denote the density of the population which moves on $\partial\Omega$ by u , and we assume that there no reproduction occurs, but the number of individuals on it only varies because of the above-mentioned positive contribution from the field and a negative contribution given by a part μ of the population that leaves $\partial\Omega$ to go back to the field.

Motivated by the wide number of applications, several authors have recently considered, from different point of views, similar models which couple reaction-diffusion equations posed in different spatial dimensions and with different diffusivities in the interior and on the boundary of a bounded domain. For example, in [2], the authors consider no reaction in the interior and nonlinear Robin coupling terms. They prove the existence of a unique weak solution of the evolution problem by means of sub- and supersolutions and determine the exponential rate of convergence to the unique steady state through entropy methods. On the other hand, in [10], the authors consider two coupled reaction-diffusion systems, one in the interior of the domain and one on the boundary and study, according to the values of the different diffusivities, the formation of Turing patterns in the interior or at the boundary.

Our first result shows, roughly speaking, that the species invades the whole environment $\bar{\Omega}$, i.e., it converges to a positive steady state of our model (which will be shown to be unique). With this result in hand, a very natural question from the biological point of view is to know how fast the species invades the domain, or, in other words, what is the velocity of expansion of the region in which the solution of our problem converges to the positive steady state. Such a concept is known as *asymptotic speed of propagation*, and it was introduced in the context of population dynamics in [8, 9].

The main results of this paper are that our problem indeed admits a positive asymptotic speed of propagation c^* , and we study its dependence on the parameters d , D , and R , characterizing the different regimes of propagation. In particular, we will prove that taking a large diffusion coefficient D produces arbitrarily large speeds, but taking D small cannot slow down the process below a certain threshold. Notice that neither of these two phenomena is obvious a priori from the biological interpretation of the model, since, in principle, one could imagine that the slower diffusive process, combined with the lack of reaction on the boundary, might act as a pure absorption term and either prevent arbitrarily large speeds of propagation or make such speed arbitrarily small—but we will show that this is not what happens in our model.

Moreover, we will prove that increasing the diffusion coefficient D always makes c^* larger, as illustrated in Figure 1. Remarkably, this phenomenon occurs even if D is very small, in particular smaller than the diffusion coefficient d inside the field (i.e., the speed of propagation is influenced by the auxiliary boundary device even when the latter is not, in principle, faster than the field itself). This is in contrast with the case of a single road treated in [3], where, for $D \leq 2d$, the speed of propagation is constantly equal to c_{KPP} , the asymptotic speed of a classical Fisher-KPP equation in \mathbb{R}^N . In particular, we prove the existence of a threshold \bar{D} which is larger than $2d$

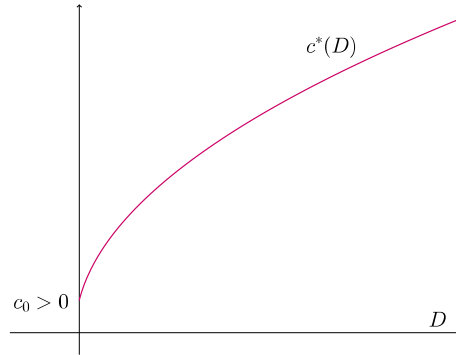


FIG. 1. Behavior of the asymptotic speed of propagation c^* with respect to D , the diffusivity on the boundary.

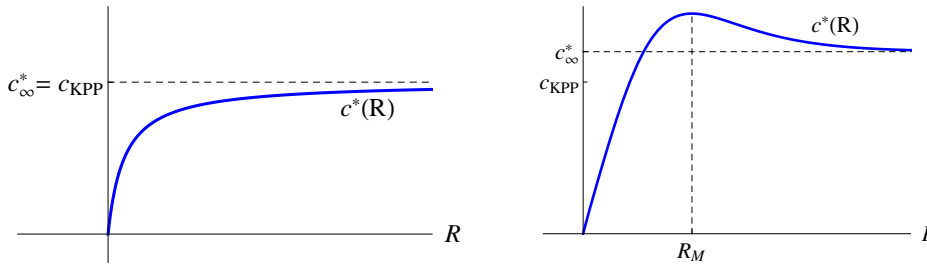


FIG. 2. Behavior of c^* with respect to the amplitude of the cylinder in the case $D \leq 2d$ (left) and $D > 2d$ (right).

and such that $c^*(D) < c_{KPP}$ for $D < \bar{D}$, $c^*(\bar{D}) = c_{KPP}$ and $c^*(D) > c_{KPP}$ for $D > \bar{D}$ (see Theorem 1.2(i), (4.19) and the ensuing discussion).

The dependence of c^* on the geometry of the field is even more intriguing and rich with somehow unexpected features. If the field is very thin (i.e., when R goes to zero), the asymptotic speed approaches zero. Such a fact is not immediately evident from the biological interpretation: in the case of two fast diffusive roads, for instance, one might be inclined to think that for small R the two roads get very close and more “available” to the individuals, which should make the diffusion faster. This is not the case: the explanation of this phenomenon probably lies in the fact that small fields do not allow the species to reproduce enough, and this reduces the overall diffusion. On the other hand, as R becomes large, the asymptotic speed c^* approaches the limit value c_∞^* , the asymptotic speed in the half-plane found in [3]. As mentioned above, c_∞^* coincides with the standard speed c_{KPP} in the field if $D \leq 2d$. Otherwise, if $D > 2d$ (i.e., when the auxiliary network provides fast enough diffusion, with respect to the diffusion in the field), c_∞^* is greater than c_{KPP} .

The threshold $D = 2d$ is also crucial for the monotonicity properties of the asymptotic speed c^* in dependence of the size of the field R . Indeed, when $D \leq 2d$ we have that c^* is increasing in R . (See the left graph in Figure 2.) This can be interpreted by saying that, if the diffusion on the auxiliary network is not fast enough, then the propagation speed only relies on the proliferation of the species, which is in turn facilitated by a larger field. Conversely, when $D > 2d$, the speed c^* does not depend monotonically on R anymore, but it has a single maximum at a precise value $R = R_M$, as shown in the right graph of Figure 2.

Once again, this fact underlines an interesting biological phenomenon: when the auxiliary network provides a fast enough diffusion, there is a competition between the proliferation of the species and the availability of the network, in order to speed up the invasion of the species. On the one hand, a large R would favor proliferation and so, in principle, diffusion; on the other hand, when R becomes too large the fast diffusion device gets too far and cannot be conveniently reached by the population. (Similarly, for small R the fast diffusion device becomes easily available, but the proliferation rate gets reduced.) As a consequence of these opposite effects, there is an optimal distance at which the two roads shall be placed to get the maximum enhancement of the propagation.

Such kind of monotonicity might arise also in other contexts with contrasting effects on the propagation, for example, if $D > d$ and there is a smaller reaction on the boundary of the cylinder than in the interior, or if $D < d$ and the reaction on the boundary is larger. However, this kind of analysis, as well as the effect of transport terms on the boundary, is outside the scope of this work and is left for further investigation.

After these considerations, we pass now to introduce the formal mathematical setting that describes our model and state in detail our main results.

We consider the following problem:

$$(1.1) \quad \begin{cases} v_t(x, y, t) - d\Delta v(x, y, t) = f(v(x, y, t)) & \text{for } (x, y) \in \Omega, \quad t > 0, \\ u_t(x, y, t) - D\Delta_{\partial\Omega} u(x, y, t) = \nu v(x, y, t) - \mu u(x, y, t) & \text{for } (x, y) \in \partial\Omega, \quad t > 0, \\ d\partial_n v(x, y, t) = \mu u(x, y, t) - \nu v(x, y, t) & \text{for } (x, y) \in \partial\Omega, \quad t > 0, \end{cases}$$

where $\Delta_{\partial\Omega}$ denotes the Laplace–Beltrami operator on $\partial\Omega$, while ∂_n stands for the outer normal derivative to $\partial\Omega$. The parameters D, d, μ, ν, R are positive and the nonlinearity $f \in C^1([0, 1])$ is of KPP type, i.e., satisfies

$$(1.2) \quad f(0) = 0 = f(1), \quad 0 < f(s) \leq f'(0)s \quad \text{for } s \in (0, 1)$$

and is extended to a negative function outside $[0, 1]$. When $N = 1$, due to the nonconnectedness of $\partial B_1(0, R)$, problem (1.1) reduces to the case of a strip bounded by two roads and reads as

$$(1.3) \quad \begin{cases} v_t(x, y, t) - d\Delta v(x, y, t) = f(v(x, y, t)) & \text{for } (x, y) \in \mathbb{R} \times (-R, R), \quad t > 0, \\ u_t(x, t) - Du_{xx}(x, t) = \nu v(x, R, t) - \mu u(x, t) & \text{for } x \in \mathbb{R}, \quad t > 0, \\ dv_y(x, R, t) = \mu u(x, t) - \nu v(x, R, t) & \text{for } x \in \mathbb{R}, \quad t > 0, \\ \tilde{u}_t(x, t) - D\tilde{u}_{xx}(x, t) = \nu v(x, -R, t) - \mu \tilde{u}(x, t) & \text{for } x \in \mathbb{R}, \quad t > 0, \\ -dv_y(x, -R, t) = \mu \tilde{u}(x, t) - \nu v(x, -R, t) & \text{for } x \in \mathbb{R}, \quad t > 0. \end{cases}$$

These kinds of models go back to [3], where the authors studied the problem

$$(1.4) \quad \begin{cases} v_t(x, y, t) - d\Delta_{\mathbb{R}^{N+1}} v(x, y, t) = f(v(x, y, t)) & \text{for } (x, y) \in \mathbb{R}^N \times \mathbb{R}^+, \quad t > 0, \\ u_t(x, t) - D\Delta_{\mathbb{R}^N} u(x, t) = \nu v(x, 0, t) - \mu u(x, t) & \text{for } x \in \mathbb{R}^N, \quad t > 0, \\ d\partial_n v(x, 0, t) = \mu u(x, t) - \nu v(x, 0, t) & \text{for } x \in \mathbb{R}^N, \quad t > 0, \end{cases}$$

for $N = 1$, which is the counterpart of (1.3) with just one road and the field which is a half-plane. Some results about (1.4), such as the well-posedness of the Cauchy problem, the comparison principle, and a Liouville-type result for stationary solutions, have been proved in [3] in arbitrary dimension N .

The main result of [3] (proved there for $N = 1$, but the arguments extend to arbitrary dimension, as shown in section 6 below) is that system (1.4) admits an

asymptotic speed of spreading c_∞^* , along any parallel direction to the hyperplane $\{y = 0\}$. If $D \leq 2d$, c_∞^* coincides with c_{KPP} , where

$$c_{KPP} = 2\sqrt{df'(0)}$$

is the spreading speed for the Fisher-KPP equation $v_t - d\Delta v = f(v)$ in the whole space \mathbb{R}^{N+1} (see [1]), while, if $D > 2d$, c_∞^* is strictly greater than c_{KPP} . As a consequence, the results of [3] show that a large diffusivity on the road enhances the speed of propagation of the species in the whole domain.

The main results of the present paper concern the asymptotic speed of spreading for problem (1.1). The first one is related to its existence.

THEOREM 1.1. *There exists $c^* = c^*(D, d, \mu, \nu, R, N) > 0$ such that, for any solution (u, v) of (1.1) with a continuous, nonnegative, initial datum $(u_0, v_0) \not\equiv (0, 0)$, with bounded support, there holds*

(i) *for all $c > c^*$,*

$$(1.5) \quad \lim_{t \rightarrow +\infty} \sup_{\substack{|x| \geq ct \\ |y|=R}} |u(x, y, t)| = 0, \quad \lim_{t \rightarrow +\infty} \sup_{\substack{|x| \geq ct \\ |y| \leq R}} |v(x, y, t)| = 0,$$

(ii) *while, for all $0 < c < c^*$,*

$$(1.6) \quad \lim_{t \rightarrow +\infty} \sup_{\substack{|x| \leq ct \\ |y|=R}} \left| u(x, y, t) - \frac{\nu}{\mu} \right| = 0, \quad \lim_{t \rightarrow +\infty} \sup_{\substack{|x| \leq ct \\ |y| \leq R}} |v(x, y, t) - 1| = 0.$$

Next, we derive the following qualitative properties for the speed of spreading.

THEOREM 1.2. *The quantity c^* given by Theorem (1.1) satisfies the following properties:*

(i) *For fixed d, μ, ν, R, N , the function $D \mapsto c^*(D) = c^*(D, d, \mu, \nu, R, N)$ is increasing. Moreover, the following limits exist and satisfy*

$$(1.7) \quad \lim_{D \downarrow 0} c^*(D) =: c_0 > 0, \quad \lim_{D \rightarrow +\infty} \frac{c^*(D)}{\sqrt{D}} \in (0, +\infty).$$

In particular $c^(D) \rightarrow +\infty$ as $D \rightarrow +\infty$.*

(ii) *For fixed D, d, μ, ν, N , the function $R \mapsto c^*(R) = c^*(D, d, \mu, \nu, R, N)$ satisfies*

$$(1.8) \quad \lim_{R \downarrow 0} c^*(R) = 0, \quad \lim_{R \rightarrow +\infty} c^*(R) = c_\infty^*,$$

where c_∞^ is the asymptotic speed of spreading for problem (1.4), which satisfies*

$$c_\infty^* \begin{cases} = c_{KPP} & \text{if } D \leq 2d, \\ > c_{KPP} & \text{if } D > 2d. \end{cases}$$

Moreover, if $D \leq 2d$, the function $R \mapsto c^(R)$ is always increasing, while, if $D > 2d$, it is increasing up to the value*

$$(1.9) \quad R_M := \frac{ND\nu}{(D - 2d)\mu}$$

and decreasing for greater values. In addition,

$$(1.10) \quad c^*(R_M) = \max_{R>0} c^*(R) = \frac{D}{\sqrt{4d(D - d)}} c_{KPP}.$$

The paper is organized as follows: in section 2 we present some preliminary results related to the existence and comparison properties of solutions of the Cauchy problem associated with (1.1). In section 3 we prove the existence and uniqueness of the positive steady state and show that it is a global attractor, in the sense of locally uniform convergence, for solutions of (1.1) starting from a nonnegative, nontrivial initial datum. Section 4 is dedicated to the geometrical construction of c^* and to the proof of Theorem 1.1. Finally, the dependences of c^* on D and on R are discussed in sections 5 and 6, respectively.

2. Preliminary results and comparison principles. In this section we present some fundamental results that are extensively used in the rest of the paper. Some of them are contained in or follow easily from [3, 4, 5], in which cases we refer to such works and just outline the adaptations that need to be done. We start with a weak and strong comparison principle for the system

$$(2.1) \quad \begin{cases} v_t - d\Delta v + cv_x = f(v) & \text{in } \Omega \times (0, +\infty), \\ u_t - D\Delta_{\partial\Omega} u + cu_x = \nu v - \mu u & \text{in } \partial\Omega \times (0, +\infty), \\ d\partial_n v = \mu u - \nu v & \text{on } \partial\Omega \times (0, +\infty), \end{cases}$$

which is more general than (1.1), since we include the possibility of an additional drift term with velocity $c \in \mathbb{R}$ in the x -direction. As usual, by a *supersolution* (resp., *subsolution*) of (2.1) we mean a pair (u, v) satisfying system (2.1) with “ \geq ” (resp., “ \leq ”) instead of “ $=$ ”. Below and in what follows, the order between real vectors is understood componentwise.

PROPOSITION 2.1. *Let $(\underline{u}, \underline{v})$ and (\bar{u}, \bar{v}) be, respectively, a subsolution bounded from above and a supersolution bounded from below of (2.1) satisfying $(\underline{u}, \underline{v}) \leq (\bar{u}, \bar{v})$ at $t = 0$. Then, exactly one of the following holds true: either $(\underline{u}, \underline{v}) < (\bar{u}, \bar{v})$ for all $t > 0$, or there exists $T > 0$ and $(x, y) \in \bar{\Omega}$ such that either $\underline{u}(x, y, T) = \bar{u}(x, y, T)$ or $\underline{v}(x, y, T) = \bar{v}(x, y, T)$, in which case $(\underline{u}, \underline{v}) = (\bar{u}, \bar{v})$ for $t \in [0, T]$.*

Proof. The arguments of the proof of [3, Proposition 3.2] easily extend to our case, the key point being the strong maximum principle, which holds for the Laplace–Beltrami operator $\Delta_{\partial\Omega}$ (and the associated evolution operator) like for the operator ∂_{xx} , which is the one considered in [3]. \square

The following result establishes the existence and uniqueness for the solution of the Cauchy problem associated with (1.1). The proof of the existence part follows from [3, Appendix A], while the uniqueness follows from Proposition 2.1.

PROPOSITION 2.2. *Let $(u_0(x, y), v_0(x, y))$ be a nonnegative, bounded and continuous pair of functions defined in $\partial\Omega$ and Ω , respectively. Then, there is a unique nonnegative, bounded solution (u, v) of (2.1) satisfying $(u, v)|_{t=0} = (u_0, v_0)$.*

With these properties established, we can show that the model exhibits total mass conservation if no reproduction is present in the field.

PROPOSITION 2.3. *Assume $f \equiv 0$ and let (u, v) be the solution of (1.1) with a nonnegative, bounded initial datum (u_0, v_0) decaying at least exponentially as $|x| \rightarrow \infty$. Then, for every $t > 0$, we have*

$$\|v(\cdot, t)\|_{L^1(\Omega)} + \|u(\cdot, t)\|_{L^1(\partial\Omega)} = \|v_0\|_{L^1(\Omega)} + \|u_0\|_{L^1(\partial\Omega)}.$$

Proof. On the one hand, taking as a subsolution the pair $(0, 0)$ in Proposition 2.1 we see that (u, v) is nonnegative for all times. On the other hand, anticipating section 4, the system admits exponential supersolutions with arbitrary slow exponential

decay (i.e., with the notation of (4.2), α arbitrarily small, which is allowed provided c is sufficiently large) and therefore, up to translation, above (u_0, v_0) at $t = 0$. Proposition 2.1 then implies that (u, v) decays exponentially as $|x| \rightarrow \infty$ for all times. By applying standard parabolic estimates (see [3, Appendix A]), the same is true for the derivatives of u and v , up to the second order in space and first order in time. Therefore, using the equations of (1.1) and applying Stokes' theorem, we obtain

$$\begin{aligned} \frac{d}{dt} \|v(\cdot, t)\|_{L^1(\Omega)} &= \int_{\Omega} v_t(x, y, t) = d \int_{\Omega} \Delta v(x, y, t) = d \int_{\partial\Omega} \partial_n v(x, y, t) \\ &= \int_{\partial\Omega} (\mu u(x, y, t) - \nu v(x, y, t)) = D \int_{\partial\Omega} \Delta_{\partial\Omega} u(x, y, t) - \int_{\partial\Omega} u_t(x, y, t) \\ &= -\frac{d}{dt} \|u(\cdot, t)\|_{L^1(\partial\Omega)}, \end{aligned}$$

where, letting $\Delta_{S^{N-1}}$ denote the Laplace–Beltrami operator on the $(N - 1)$ -dimensional unit sphere, we have used

$$\int_{\partial\Omega} \Delta_{\partial\Omega} u(x, y, t) = \int_{S^{N-1}} \int_{-\infty}^{+\infty} \partial_{xx}^2 u(x, y, t) + \int_{-\infty}^{+\infty} \int_{S^{N-1}} \Delta_{S^{N-1}} u(x, y, t) = 0,$$

which holds because $\partial_x u$ decays exponentially to 0 and the second summand in the right-hand side is 0 by Stokes' theorem, since S^{N-1} is compact and has no boundary. We have therefore shown that $\|v(\cdot, t)\|_{L^1(\Omega)} + \|u(\cdot, t)\|_{L^1(\partial\Omega)}$ is constant in time, and this concludes the proof. \square

We also need the following comparison principle involving an extended class of generalized subsolutions and which is a particular instance of [3, Proposition 3.3]. Actually the result of [3] holds for a more general class of subsolutions than the one we consider here, but we present it in the form needed in this paper.

PROPOSITION 2.4. *Let (u_1, v_1) be a subsolution of (2.1), bounded from above and such that u_1 and v_1 vanish on the boundary respectively of an open set E of $\partial\Omega \times [0, +\infty)$ and of an open set F of $\bar{\Omega} \times [0, +\infty)$ (in the relative topologies). Assume in addition that*

$$(2.2) \quad \begin{aligned} v_1 &\leq 0 && \text{in } E \cap \{u_1 > 0\} \setminus F, \\ u_1 &\leq 0 && \text{in } F \cap \{v_1 > 0\} \setminus E. \end{aligned}$$

Then, setting

$$\underline{u} := \begin{cases} \max\{u_1, 0\} & \text{in } \bar{E}, \\ 0 & \text{otherwise,} \end{cases} \quad \underline{v} := \begin{cases} \max\{v_1, 0\} & \text{in } \bar{F}, \\ 0 & \text{otherwise,} \end{cases}$$

for any supersolution (\bar{u}, \bar{v}) of (1.1) bounded from below and such that $(\underline{u}, \underline{v}) \leq (\bar{u}, \bar{v})$ at $t = 0$, we have $(\underline{u}, \underline{v}) \leq (\bar{u}, \bar{v})$ for all $t > 0$.

We will refer to such a $(\underline{u}, \underline{v})$ as a generalized subsolution of (2.1). When it does not depend on t , we will say that $(\underline{u}, \underline{v})$ is a generalized stationary subsolution of (2.1).

Before concluding this section, we derive the strong maximum principle for two variants of system (1.1):

$$(2.3) \quad \begin{cases} v_t - d\Delta v = f(v) & \text{for } (x, y) \in \Omega, \quad t > 0, \\ u_t = \nu v - \mu u & \text{for } (x, y) \in \partial\Omega, \quad t > 0, \\ d\partial_n v = \mu u - \nu v & \text{for } (x, y) \in \partial\Omega, \quad t > 0, \end{cases}$$

$$(2.4) \quad \begin{cases} v_t - d\Delta_y v = f(v) & \text{for } (x, y) \in \Omega, \quad t > 0, \\ u_t - \Delta_{\partial\Omega} u = \nu v - \mu u & \text{for } (x, y) \in \partial\Omega, \quad t > 0, \\ d\partial_n v = \mu u - \nu v & \text{for } (x, y) \in \partial\Omega, \quad t > 0, \end{cases}$$

where Δ_y denotes the Laplace operator with respect to the y -variables only. Both systems are semidegenerate, in the sense that exactly one of the two parabolic equations is degenerate: the second one for (2.3) and the first one for (2.4). Apart from being in themselves interesting, these results will be needed in section 5 to characterize some singular limits related to the asymptotic speed of propagation for (1.1). Roughly speaking, even if one equation is degenerate, the presence of the other, which is not degenerate, still guarantees the system to be strongly monotone.

PROPOSITION 2.5. *Let $(\underline{u}, \underline{v})$ and (\bar{u}, \bar{v}) be a subsolution bounded from above and a supersolution bounded from below, both of system (2.3) or of system (2.4), such that $(\underline{u}, \underline{v}) \leq (\bar{u}, \bar{v})$ in $\bar{\Omega} \times (0, +\infty)$. If there exist $T > 0$ and $(\hat{x}, \hat{y}) \in \bar{\Omega}$ for which either $\underline{u}(\hat{x}, \hat{y}, T) = \bar{u}(\hat{x}, \hat{y}, T)$ or $\underline{v}(\hat{x}, \hat{y}, T) = \bar{v}(\hat{x}, \hat{y}, T)$, then $(\underline{u}, \underline{v}) = (\bar{u}, \bar{v})$ for $t \in [0, T]$.*

Proof. The pair $(u, v) := (\bar{u} - \underline{u}, \bar{v} - \underline{v})$ is a nonnegative supersolution of either system (2.3) or (2.4) with $f(v)$ replaced by $v(f(\bar{v}) - f(\underline{v})) / (\bar{v} - \underline{v})$ in the first equation. This replacement will be understood throughout the proof. We argue slightly differently according to which system is involved.

Case 1: system (2.3). Suppose first that $v(\hat{x}, \hat{y}, T) = 0$. If $(\hat{x}, \hat{y}) \in \Omega$, then, applying the parabolic strong maximum principle to the first equation in (2.3), we conclude that $v = 0$ for $t \leq T$ and thus the same is true for u by the third equation. If $(\hat{x}, \hat{y}) \in \partial\Omega$, the parabolic Hopf lemma implies that either $\partial_n v(\hat{x}, \hat{y}, T) < 0$ or $v = 0$ for $t \leq T$. The first situation being ruled out by the third equation in (2.3), we can conclude as before. Suppose now that $u(\hat{x}, \hat{y}, T) = 0$. We claim that this yields $v(\hat{x}, \hat{y}, T) = 0$, and thus the previous arguments apply. Indeed, if it were not the case, we would have from the second equation of (2.3) that $u_t(\hat{x}, \hat{y}, T) > 0$ and, as a consequence, $u(\hat{x}, \hat{y}, t) < 0$ for $t < T$, $t \sim 0$, which is impossible.

Case 2: system (2.4). Suppose first that $u(\hat{x}, \hat{y}, T) = 0$. By the second equation in (2.4) we see that u is a supersolution of the uniformly parabolic linear operator $\partial_t - \Delta_{\partial\Omega} + \mu$. Hence, the parabolic strong maximum principle yields $u = 0$ in $\partial\Omega \times [0, T]$, and thus the same is true for v , always by the second equation in (2.4). Moreover, $\partial_n v = 0$ on $\partial\Omega \times [0, T]$ by the third equation in (2.4). Since, for fixed $x \in \mathbb{R}$, $(y, t) \mapsto v(x, y, t)$ is a supersolution of the first equation in (2.4), which is uniformly parabolic in (y, t) , we deduce from the Hopf lemma that $v = 0$ in $\bar{\Omega} \times [0, T]$.

Consider now the case where $v(\hat{x}, \hat{y}, T) = 0$. If $(\hat{x}, \hat{y}) \in \partial\Omega$, since $v \geq 0$, we have that $\partial_n v(\hat{x}, \hat{y}, T) \leq 0$ and the third equation of (2.4) implies $u(\hat{x}, \hat{y}, T) = 0$. That is, we end up with the previous case. If instead $(\hat{x}, \hat{y}) \in \Omega$, then, applying the parabolic strong maximum principle to $(y, t) \mapsto v(\hat{x}, y, t)$, which is a supersolution of the first equation in (2.4), we derive $v(\hat{x}, y, t) = 0$ for $|y| \leq R$, $t \leq T$, i.e., v vanishes on a point of $\partial\Omega$, which is a case that we have already treated. \square

Remark 2.6. By looking at the proof of Proposition 2.5, it follows immediately that the comparison principles also hold if we add to (2.3) and (2.4) a constant drift term in the x -direction.

3. Liouville-type result and long time behavior. In this section we discuss the asymptotic behavior as $t \rightarrow +\infty$ of solutions of the Cauchy problem. First, for later purposes, we study the long time behavior of solutions of Problem (1.1) with an additional drift term and which start from a specific class of initial data. Next, we show that the limit in time of a solution of (1.1) is always constrained between two positive steady states that do not depend on the x -variable and are rotationally invariant in y . Finally, we classify all the steady states with these symmetries, showing that there is a unique nontrivial one, which is a global attractor for our problem.

PROPOSITION 3.1. *Let $(\underline{u}, \underline{v}) \neq (0, 0)$ be a nonnegative generalized stationary subsolution, in the sense of Proposition 2.4, of (2.1) which has bounded support and is rotationally invariant in y . Then, the solution (\tilde{u}, \tilde{v}) of (2.1) with $(\underline{u}, \underline{v})$ as initial datum satisfies*

$$(3.1) \quad \lim_{t \rightarrow +\infty} (\tilde{u}, \tilde{v}) = (U, V),$$

locally uniformly in $\bar{\Omega}$, where (U, V) is a positive stationary solution of (2.1), which is rotationally invariant in y and x -independent.

Proof. By the comparison principle of Proposition 2.4, $(\tilde{u}, \tilde{v}) \geq (\underline{u}, \underline{v})$ for all times. Hence, by Proposition 2.1, (\tilde{u}, \tilde{v}) is nondecreasing in time, and it is actually strictly increasing by the strong comparison result, because otherwise $(\tilde{u}, \tilde{v}) = (\underline{u}, \underline{v})$ for all times, which is impossible since $(\underline{u}, \underline{v})$ is not a solution of (1.1). From this monotonicity in t , we obtain that (\tilde{u}, \tilde{v}) tends, as $t \rightarrow +\infty$, locally uniformly in $\bar{\Omega}$ to a nonnegative bounded (U, V) . Moreover, by standard parabolic estimates, the sequence $\{(\tilde{u}(\cdot, \cdot, \cdot + n), \tilde{v}(\cdot, \cdot, \cdot + n))\}$ converges (up to subsequences) to (U, V) in C^2_{loc} in space and C^1_{loc} in time. It follows that (U, V) is still a solution to (2.1), which is actually a stationary solution because it is time-independent. This proves (3.1).

As for the symmetries of (U, V) , we have that it is rotationally invariant in y since the Cauchy problem itself is rotationally invariant in y and has a unique solution. To prove that it is also x -independent, we “slide” the initial datum $(\underline{u}, \underline{v})$ as follows.

From the monotone convergence, we have that $(U, V) > (\underline{u}, \underline{v})$ and, since the latter has compact support, $(\underline{u}(\cdot \pm h, \cdot), \underline{v}(\cdot \pm h, \cdot))$ still lies below (U, V) for sufficiently small h . It follows from Propositions 2.4 and 2.1 that the solution to (1.1) emerging from $(\underline{u}(\cdot \pm h, \cdot), \underline{v}(\cdot \pm h, \cdot))$ lies below (U, V) for all times. But, by the x -translation invariance of the system, such a solution is simply the translation in the x variable by $\pm h$ of (\tilde{u}, \tilde{v}) , and therefore it converges to the corresponding translation of (U, V) as $t \rightarrow +\infty$. We have therefore shown that these translations of (U, V) lie, for h small enough, below (U, V) itself, which immediately implies that (U, V) does not depend on x . \square

THEOREM 3.2. *For every nonnegative, bounded $(u_0, v_0) \neq (0, 0)$, there exist two positive steady states of (1.1), denoted by (U_1, V_1) and (U_2, V_2) , which are x -independent and rotationally invariant in y and such that the solution of (1.1) starting from the initial datum (u_0, v_0) satisfies*

$$(3.2) \quad (U_1, V_1) \leq \liminf_{t \rightarrow +\infty} (u, v) \leq \limsup_{t \rightarrow +\infty} (u, v) \leq (U_2, V_2),$$

where the first inequality holds locally uniformly in $\bar{\Omega}$ and the last one uniformly.

Proof. It is easy to see that the pair (\bar{u}, \bar{v}) with

$$\bar{v} = \max \left\{ 1, \|v_0\|_\infty, \frac{\mu}{\nu} \|u_0\|_\infty \right\}, \quad \bar{u} = \frac{\nu}{\mu} \bar{v},$$

is a stationary supersolution to (1.1) which is above (u, v) at $t = 0$. (The 1 in the definition of \bar{v} is taken in the light of the hypothesis on the sign of f (see (1.2)).) As a consequence of Proposition 2.1, we have that the solution of (1.1) starting from (\bar{u}, \bar{v}) lies always above (u, v) and tends nonincreasingly, as $t \rightarrow +\infty$, to a positive bounded steady state (U_2, V_2) of (1.1). It also follows from the symmetries of the system that (U_2, V_2) inherits from (\bar{u}, \bar{v}) the x -independence and the radial symmetry in y . As a consequence, the convergence is uniform in $\bar{\Omega}$ and the last inequality in (3.2) is thereby proved.

To prove the first one, consider R_1 such that the eigenvalue problem

$$(3.3) \quad \begin{cases} -\Delta \phi = \phi & \text{in } B_N(0, R_1), \\ \phi = 0 & \text{on } \partial B_N(0, R_1) \end{cases}$$

admits a positive solution ϕ . Such an eigenfunction is therefore the (unique up to a scalar multiple) principal eigenfunction of $-\Delta$ in $B_N(0, R_1)$ under Dirichlet boundary conditions, and the associated eigenvalue is 1. It is well known that $\phi(y) = \psi(|y|)$ with $\psi : (0, R_1) \rightarrow \mathbb{R}$ is decreasing and satisfies $\psi'(0) = 0$. Consider now the pair $(\underline{u}, \underline{v})$ defined by

$$(\underline{u}, \underline{v}) := \begin{cases} \cos(\alpha x) (1, \gamma \phi(\beta y)) & \text{if } |x| \leq \frac{\pi}{2\alpha}, \\ (0, 0) & \text{otherwise} \end{cases}$$

with $\alpha, \gamma > 0$ and $0 < \beta < R_1/R$ to be chosen. Plugging $(\underline{u}, \underline{v})$ into the third equation of (1.1), we obtain

$$(3.4) \quad \gamma = \frac{\mu}{d\beta\psi'(\beta R) + \nu\psi(\beta R)},$$

which is positive for $0 < \beta < \bar{\beta} < R_1/R$, where $\bar{\beta}$ is the first positive zero of the denominator. We now look for α, β so that $(\underline{u}, \underline{v})$ is a generalized subsolution—in the sense of Proposition 2.4—to

$$\begin{cases} v_t - d\Delta v = \frac{f'(0)}{2} v, \\ u_t - D\Delta_{\partial\Omega} u = \nu v|_{\{|y|=R\}} - \mu u. \end{cases}$$

Due to (3.4), this results in the system

$$(3.5) \quad \begin{cases} d\alpha^2 + d\beta^2 \leq f'(0)/2, \\ D\alpha^2 \leq \frac{-\mu d\beta\psi'(\beta R)}{d\beta\psi'(\beta R) + \nu\psi(\beta R)}. \end{cases}$$

For fixed $\beta < \min\{\sqrt{\frac{f'(0)}{2d}}, \bar{\beta}\}$, since the right-hand side of the second inequality of (3.5) is positive, it is possible to take $\alpha \sim 0$ in such a way (3.5) is satisfied. Thanks to (1.2) we have that, for $\varepsilon \sim 0$, $\varepsilon(\underline{u}, \underline{v})$ is a compactly supported generalized subsolution to (1.3). Reducing ε if need be, we can further assume that $\varepsilon(\underline{u}, \underline{v})$ lies below the pair (u, v) at time 1, the latter being strictly positive by Proposition 2.1. Again by Proposition 2.1, the order is preserved between (u, v) shifted by 1 in time and the solution (\tilde{u}, \tilde{v}) to (1.1) emerging from $\varepsilon(\underline{u}, \underline{v})$. The proof is concluded applying Proposition 3.1. \square

The previous result indicates that we have to focus the attention on the steady states of (1.1) or, more generally of (2.1), with the symmetry properties specified there. In this sense we have the following Liouville-type result.

PROPOSITION 3.3. *The unique nonnegative bounded stationary states of (2.1) that are x -independent and rotationally invariant in y are $(0, 0)$ and $(\frac{\nu}{\mu}, 1)$.*

Proof. Let (u, v) be a steady state as in the statement of the proposition. Then u is constant and there exists a nonnegative function $\Psi \in C^1([0, R]) \cap C^2((0, R])$ with $\Psi'(0) = 0$, such that $v(x, y) = \Psi(|y|)$. It follows from the second equation in (2.1) that $u \equiv \frac{\nu}{\mu}\Psi(R)$, and thus the other two equations read

$$(3.6) \quad \begin{cases} -d\Psi''(r) - \frac{d(N-1)}{r}\Psi'(r) = f(\Psi(r)), & r \in (0, R), \\ \Psi'(R) = 0 = \Psi'(0). \end{cases}$$

Since the constant functions $\Psi \equiv 1$ and $\Psi \equiv 0$ are solutions of (3.6), thanks to the uniqueness of the Cauchy problem associated to the differential equation of (3.6) with initial conditions $\Psi(R) = s \in \mathbb{R}^+$, $\Psi'(R) = 0$, to prove the result it is sufficient to show that any solution of (3.6) must satisfy $\Psi(R) = 1$ or $\Psi(R) = 0$. Suppose that this is not the case. Then $\Psi''(R) \neq 0$ and Ψ' does not vanish in a left neighborhood of R , being positive if $0 < \Psi(R) < 1$ and negative if $\Psi(R) > 1$. Set

$$\rho := \max\{r \in [0, R) : \Psi'(r) = 0\}.$$

From this definition we have that Ψ' has a fixed strict sign in (ρ, R) , which is the same as $1 - \Psi(R)$. If this sign is positive, then, for $\rho < r < R$, we have that $0 < \Psi(r) < \Psi(R) < 1$, whence $f(\Psi(r)) > 0$ and the first equation in (3.6) eventually yields $\Psi''(r) < 0$. This is impossible because $\Psi'(\rho) = \Psi'(R) = 0$. If instead $1 - \Psi(R) < 0$, then we obtain $\Psi'(r) < 0$ for $\rho < r < R$, which implies $\Psi(r) > \Psi(R) > 1$ and thus $f(\Psi(r)) < 0$. Therefore, in such case, the first equation in (3.6) yields $\Psi''(r) > 0$ for $\rho < r < R$, which again contradicts $\Psi'(\rho) = \Psi'(R) = 0$. \square

As an immediate consequence of Theorem 3.2 and Proposition 3.3, we characterize the long time behavior of solutions of the Cauchy problem associated with (1.1).

COROLLARY 3.4. *Any solution (u, v) of (1.1) starting from a bounded, nonnegative initial datum $(u_0, v_0) \not\equiv (0, 0)$ satisfies*

$$(3.7) \quad \begin{aligned} \lim_{t \rightarrow +\infty} u(x, y, t) &= \frac{\nu}{\mu}, & \text{locally uniformly in } \partial\Omega, \\ \lim_{t \rightarrow +\infty} v(x, y, t) &= 1, & \text{locally uniformly in } \bar{\Omega}. \end{aligned}$$

In particular, restricting to stationary solutions of (1.1), we obtain that the unique nonnegative bounded steady states are $(0, 0)$ and $(\frac{\nu}{\mu}, 1)$.

Remark 3.5.

- (i) Observe that this last statement of Corollary 3.4 is much stronger than Proposition 3.3 with $c = 0$, because it holds without knowing a priori the symmetry of solutions.
- (ii) In (3.7), thanks to Theorem 3.2, the inequalities “ \leq ” related to the \limsup hold uniformly in $\bar{\Omega}$.

4. Asymptotic speed of spreading. In this section we prove the existence of a value c^* such that (1.1) admits a supersolution moving with speed c^* and some generalized subsolutions moving with speed less than and arbitrarily close to c^* . This value

c^* will be identified as the asymptotic speed of spreading appearing in Theorem 1.1. The construction of c^* will also provide some key information about its dependence on D and R that will be used in the following sections to derive Theorem 1.2.

The starting point to find c^* is the analysis of *plane wave* solutions for the linearization of (1.1) around $v = 0$. This is achieved in section 4.1 through a geometrical construction. The plane waves are supersolutions of (1.1) by the KPP hypothesis, and their existence immediately implies (1.5). In section 4.2 we construct the generalized subsolutions and prove (1.6).

4.1. Plane wave solutions. Consider the linearization of (1.1) around $v = 0$:

$$(4.1) \quad \begin{cases} v_t - d\Delta v = f'(0)v & \text{in } \Omega \times \mathbb{R}_+, \\ u_t - D\Delta_{\partial\Omega} u = \nu v - \mu u & \text{on } \partial\Omega \times \mathbb{R}_+, \\ d\partial_n v = \mu u - \nu v & \text{on } \partial\Omega \times \mathbb{R}_+. \end{cases}$$

We look for plane wave solutions in the form

$$(4.2) \quad (\bar{u}, \bar{v}) = e^{\alpha(x+ct)}(1, \gamma\phi(\beta, y))$$

with $\alpha, \gamma > 0$, $\beta \in \mathbb{R}$, and ϕ positive, i.e., moving leftward at a velocity c and decaying exponentially as $x + ct \rightarrow -\infty$. In contrast with [3], but in analogy to [13], we need to consider two types of plane waves, corresponding to a dichotomy in the definition of ϕ :

$$\phi(\beta, y) := \begin{cases} \phi_1(\beta y) & \text{if } \beta \geq 0, \\ \phi_2(\beta y) & \text{if } \beta < 0. \end{cases}$$

The functions ϕ_1 and ϕ_2 are related to the eigenvalue problem for the Laplace operator in a ball and in the whole space, respectively. We will show that ϕ is differentiable, reflecting a continuous transition from $\phi_1(\beta y)$ to $\phi_2(\beta y)$ at $\beta = 0$, uniformly in y , due to the fact that the support of $\phi_1(\beta y)$ becomes the whole \mathbb{R}^N as $\beta \downarrow 0$. The construction of the subsolutions that will be carried out in section 4.2 makes use of one or the other type of plane wave depending on the values of the parameters of the problem. This dichotomy will give rise to the two different monotonicities with respect to R stated in Theorem 1.2(ii).

Case 1: $\beta \geq 0$. We start with $\beta \geq 0$. (Throughout the construction of this section, the reader may refer to Figure 4.) In this case we take $\phi(\beta, y) := \phi_1(\beta y)$ in (4.2), where ϕ_1 is the positive eigenfunction of problem (3.3), normalized by $\phi_1(0) = 1$. We therefore impose $\beta \leq R_1/R$. We recall that $\phi_1(z) = \psi_1(|z|)$ for a real analytic decreasing function ψ_1 on $[0, R_1]$ such that $\psi_1'(0) = 0$. It is well known that

$$(4.3) \quad \psi_1(r) = {}_0F_1\left(\tau + 1; -\frac{r^2}{4}\right),$$

where $\tau = N/2 - 1$ and ${}_0F_1(\tau + 1; \frac{r^2}{4})$ is the generalized hypergeometric function defined as

$$(4.4) \quad {}_0F_1(\tau + 1; z) := \sum_{n=0}^{\infty} \frac{\Gamma(\tau + 1)}{\Gamma(\tau + 1 + n)} \frac{z^n}{n!}.$$

Plugging this expression into (4.1) we are driven to the system

$$(4.5) \quad \begin{cases} -d\alpha^2 + d\beta^2 + c\alpha = f'(0), \\ -D\alpha^2 + c\alpha = \nu\gamma\psi_1(\beta R) - \mu, \\ d\gamma\beta\psi_1'(\beta R) = \mu - \nu\gamma\psi_1(\beta R). \end{cases}$$

Solving the last equation for γ yields

$$(4.6) \quad \gamma = \frac{\mu}{d\beta\psi_1'(\beta R) + \nu\psi_1(\beta R)}.$$

In order to have $\gamma > 0$ we restrict to $0 \leq \beta < \bar{\beta}$, where $\bar{\beta} \in (0, R_1/R)$ is the first positive zero of the function $r \mapsto dr\psi_1'(rR) + \nu\psi_1(rR)$, which is positive for $r = 0$ and negative for $r = R_1/R$. By plugging (4.6) into the second equation of (4.5) we obtain

$$-D\alpha^2 + c\alpha = \frac{-\mu d\beta\psi_1'(\beta R)}{d\beta\psi_1'(\beta R) + \nu\psi_1(\beta R)} =: \chi_1(\beta)$$

and, solving for α ,

$$(4.7) \quad \alpha_D^\pm(c, \beta) = \frac{1}{2D} \left(c \pm \sqrt{c^2 - 4D\chi_1(\beta)} \right).$$

Observe that χ_1 is positive in $(0, \bar{\beta})$ and satisfies $\chi_1(0) = 0 = \chi_1'(\bar{\beta})$ and $\chi_1(\beta) \rightarrow +\infty$ as $\beta \uparrow \bar{\beta}$. We now use a property of the function ψ_1 that will be crucial also in what follows: $\log \psi_1$ is concave (see, e.g., [6]). It implies that the negative function $\psi_1(r)/\psi_1'(r)$ is increasing and then the same is true for $r \mapsto \psi_1(r)/(r\psi_1'(r))$. Reasoning on $1/\chi_1$, we find that χ_1 is increasing too. Therefore, for every $c > 0$ there exists a unique value of $\beta \in (0, \bar{\beta})$, denoted by $\tilde{\beta}(c)$, such that

$$(4.8) \quad c^2 = 4D\chi_1(\tilde{\beta}(c)).$$

There holds

$$\lim_{c \downarrow 0} \tilde{\beta}(c) = 0, \quad \lim_{c \rightarrow +\infty} \tilde{\beta}(c) = \bar{\beta}.$$

The functions α_D^\pm are real-valued for $\beta \in (0, \tilde{\beta}(c)]$, where they satisfy

$$\beta \mapsto \alpha_D^+(c, \beta) \text{ is decreasing,} \quad \beta \mapsto \alpha_D^-(c, \beta) \text{ is increasing.}$$

With regard to the monotonicity in c , we have that

$$c \mapsto \alpha_D^+(c, \beta) \text{ is increasing,} \quad c \mapsto \alpha_D^-(c, \beta) \text{ is decreasing}$$

and that the region delimited by $\alpha_D^\pm(c, \cdot)$ invades, increasingly, the strip $[0, \bar{\beta}] \times (0, +\infty)$ in the (β, α) -plane as $c \rightarrow +\infty$, while it shrinks to $(0, 0)$ as $c \downarrow 0$ (see Figure 3).

On the other hand the first equation in (4.5) represents the two branches of a hyperbola

$$\alpha_d^\pm(c, \beta) := \frac{1}{2d} \left(c \pm \sqrt{c^2 - c_{\text{KPP}}^2 + 4d^2\beta^2} \right),$$

where $c_{\text{KPP}} = 2\sqrt{df'(0)}$. For $c < c_{\text{KPP}}$, the functions $\alpha_d^\pm(c, \beta)$ are real-valued for $\beta \geq \hat{\beta}_1(c)$, where $\hat{\beta}_1(c) > 0$ satisfies

$$c^2 = c_{\text{KPP}}^2 - 4d^2\hat{\beta}_1(c)^2.$$

Observe that $\hat{\beta}_1(c) \rightarrow \sqrt{f'(0)/d}$ as $c \downarrow 0$. On the other hand, for $c \geq c_{\text{KPP}}$, the hyperbolas are defined for every $\beta \geq 0$. In particular, for $c = c_{\text{KPP}}$, the hyperbolas

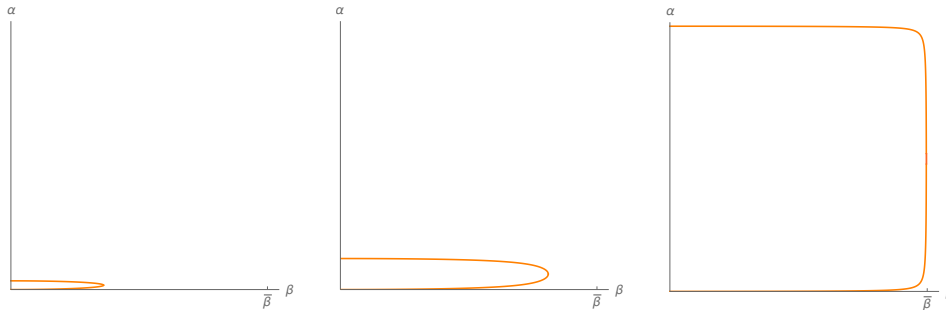


FIG. 3. Behavior of the curves $\alpha_D^\pm(c, \cdot)$ for small (left), intermediate (center), and large (right) values of c .

degenerate into the straight lines $\pm\beta + c_{\text{KPP}}/(2d)$. As c increases, the region lying in the first quadrant between the curves $\alpha_d^\pm(c, \cdot)$ with $\beta \geq \hat{\beta}_1(c)$ if $c < c_{\text{KPP}}$ and $\beta \geq 0$ if $c \geq c_{\text{KPP}}$ invades monotonically the whole quadrant.

Case 2: $\beta \leq 0$. Passing to the construction of the second type of plane waves, we consider the positive radial eigenfunction ϕ_2 of $\Delta\phi_2 = \phi_2$ in \mathbb{R}^N , normalized by $\phi_2(0) = 1$, and we look for solutions of (4.2) with $\phi(\beta, y) = \phi_2(\beta y)$ and this time $\beta \leq 0$. Let us recall the construction of ϕ_2 , because it provides some information needed in what follows. We look for $\psi_2 : \mathbb{R}_- \rightarrow \mathbb{R}$ such that $\phi_2(z) = \psi_2(-|z|)$, $\psi_2'(0) = 0$, and satisfying the Bessel equation

$$(4.9) \quad \psi_2''(r) + \frac{N-1}{r}\psi_2'(r) - \psi_2(r) = 0 \quad \text{for } r < 0.$$

The desired solution of (4.9) is

$$(4.10) \quad \psi_2(r) = {}_0F_1\left(\tau + 1; \frac{r^2}{4}\right).$$

Indeed $\psi_2(0) = 1$ and, using the fundamental property of the Gamma function

$$\Gamma(\tau + 2) = (\tau + 1)\Gamma(\tau + 1) \quad \text{for every } \tau > -1,$$

we derive

$$(4.11) \quad \psi_2'(r) = \frac{r}{2(\tau + 1)} {}_0F_1\left(\tau + 2; \frac{r^2}{4}\right),$$

and, thus, $\psi_2'(0) = 0$. Moreover, from (4.4) we have that $\psi_2(r)$ and $\psi_2'(r)$ are defined for all $r < 0$, the former being positive and the latter negative.

By plugging $(\bar{u}, \bar{v}) = e^{\alpha(x+ct)}(1, \gamma\phi_2(\beta y))$ into (4.1) and proceeding as in the previous case, we obtain the following system:

$$(4.12) \quad \begin{cases} -d\alpha^2 - d\beta^2 + c\alpha = f'(0), \\ -D\alpha^2 + c\alpha = \frac{-\mu d\beta\psi_2'(\beta R)}{d\beta\psi_2'(\beta R) + \nu\psi_2(\beta R)}, \\ \gamma = \frac{\nu\psi_2(\beta R)}{d\beta\psi_2'(\beta R) + \nu\psi_2(\beta R)}. \end{cases}$$

Observe that, in this case, $\gamma > 0$ without any restriction on $\beta \leq 0$. We now extend the previously defined functions $\alpha_D^\pm(c, \beta)$ and $\alpha_d^\pm(c, \beta)$ to negative values of β . Solving the second equation of (4.12) for α gives

$$(4.13) \quad \alpha_D^\pm(c, \beta) = \frac{1}{2D} \left(c \pm \sqrt{c^2 - 4D\chi_2(\beta)} \right),$$

where

$$\chi_2(\beta) = \frac{-\mu d \beta \psi_2'(\beta R)}{d \beta \psi_2'(\beta R) + \nu \psi_2(\beta R)}.$$

The function χ_2 vanishes at 0 and is defined and negative for every $\beta < 0$. Moreover ψ_2 is log-convex (for the proof in the case $N > 1$ see, e.g., [12], while the case $N = 1$ follows from direct computation, since in this case $\psi_2(r) = \cosh(r)$), which implies that χ_2 is increasing for $\beta < 0$. As a consequence, $\beta \mapsto \alpha_D^\pm(c, \beta)$ is decreasing, for $\beta < 0$. (Observe that $\alpha_D^-(c, \beta)$ is not relevant for $\beta \leq 0$, since it is always negative by (4.13) and since χ_2 is negative.) Finally, it is easy to see that the region of the second quadrant delimited by this graph and the β -axis invades monotonically such quadrant as $c \uparrow +\infty$.

Now the first equation of (4.12) describes, for $c \geq c_{KPP}$, a half-circle

$$(4.14) \quad (\beta, \alpha_d^\pm(c, \beta)), \quad \beta \leq 0,$$

which has center $(0, \frac{c}{2d})$ and radius

$$\rho(c) = \frac{\sqrt{c^2 - c_{KPP}^2}}{2d};$$

in particular it is defined for $0 \geq \beta \geq \hat{\beta}_2(c) := -\rho(c)$. The half-disk bounded by it shrinks to its center as $c \downarrow c_{KPP}$ and invades monotonically the whole of the second quadrant as $c \rightarrow +\infty$.

In sum, we have defined the functions $\alpha_D^\pm, \alpha_d^\pm$ for β ranging in the whole real line. (Observe that α_d^\pm lie in the first quadrant for $c \leq c_{KPP}$.) Direct computations show that, for every $c > 0$,

$$(4.15) \quad \lim_{\beta \rightarrow 0} \alpha_D^\pm(c, \beta) = \frac{c}{D}, \quad \lim_{\beta \rightarrow 0} \partial_\beta \alpha_D^\pm(c, \beta) = 0,$$

and, for $c > c_{KPP}$,

$$(4.16) \quad \lim_{\beta \rightarrow 0} \alpha_d^\pm(c, \beta) = \frac{c \pm \sqrt{c^2 - c_{KPP}^2}}{2d}, \quad \lim_{\beta \rightarrow 0} \partial_\beta \alpha_d^\pm(c, \beta) = 0.$$

As a consequence, the sets $\Sigma_D(c), \Sigma_d(c)$ defined by

$$(4.17) \quad \Sigma_D(c) := \left\{ (\beta, \alpha_D^\pm(c, \beta)), \beta \leq \tilde{\beta}(c) \right\}, \quad \Sigma_d(c) := \left\{ (\beta, \alpha_d^\pm(c, \beta)), \beta \geq \hat{\beta}(c) \right\},$$

where we have set $\hat{\beta}(c) = \hat{\beta}_1(c)$ for $c \leq c_{KPP}$ and $\hat{\beta}(c) = \hat{\beta}_2(c)$ for $c > c_{KPP}$, are continuous curves in the (β, α) upper half-plane, which are moreover differentiable if $c \neq c_{KPP}$. Thanks to the above-mentioned monotonicity properties in c of the functions α_D^\pm and α_d^\pm , there exists c^* such that the curves $\Sigma_D(c)$ and $\Sigma_d(c)$ do not intersect for $c < c^*$, touch for the first time, being tangent, for $c = c^*$ and are secant

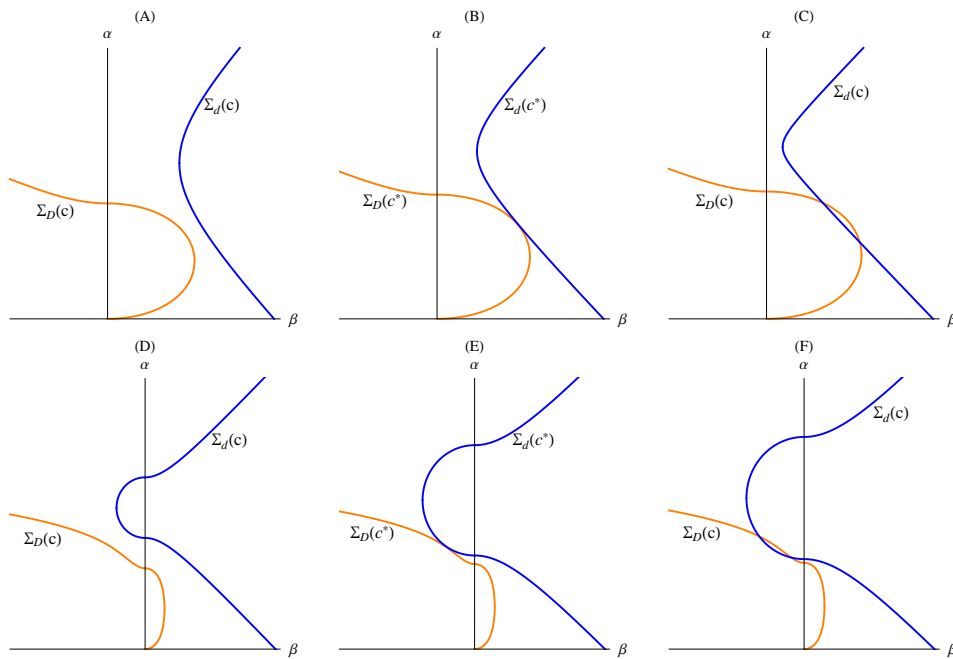


FIG. 4. Relative position of $\Sigma_D(c)$ and $\Sigma_d(c)$ as c increases (from left to right): $c^* = c_1^*$ (first row) and $c^* = c_2^*$ (second row).

for $c > c^*$ (see Figure 4). The (β, α) corresponding to the intersection points provide the desired plane waves for any $c \geq c^*$.

Actually, we wish to know how many intersection points the curves Σ_D and Σ_d exactly have for $c \geq c^*$. The answer is given in the following result, which, apart from the importance that it will have in the rest of this work, is interesting because it provides information about the number of solutions of systems (4.5) and (4.12) using PDE tools, specifically the comparison principle. We think that this kind of technique may be crucial in the study of other reaction-diffusion systems.

PROPOSITION 4.1. *The curves $\Sigma_D(c)$ and $\Sigma_d(c)$ defined in (4.17) have, for $c \geq c^*$, at most two intersections. Moreover, for $c = c^*$, there is a unique intersection.*

Proof. To prove the first part, assume by contradiction that there exist (β_i, α_i) , $i \in \{1, 2, 3\}$, with $\beta_i \neq \beta_j$ for $i \neq j$. By the monotonicity in β of the curves, which has been established above, we have that $\alpha_i \neq \alpha_j$ for $i \neq j$, and we can label the intersections so that

$$(4.18) \quad 0 < \alpha_1 < \alpha_2 < \alpha_3.$$

As a consequence, problem (4.1) admits three distinct solutions (u_i, v_i) , $i \in \{1, 2, 3\}$, of the form (4.2) with $(\alpha, \beta, \gamma) = (\alpha_i, \beta_i, \gamma_i)$, where $\gamma_i = \gamma(\beta_i)$ is given by (4.6). The function $(\tilde{u}, \tilde{v}) := (u_2 - u_3, v_2 - v_3)$ is also a solution to (4.1). Thanks to (4.18), and since $\gamma_1 \phi(\beta_1, y) > 0$ in $\overline{B_N(0, R)}$, there exists $L > 0$ such that, for every $y \in B_N(0, R)$ and $t = 0$,

$$(u_1, v_1) > (\tilde{u}, \tilde{v}) \quad \text{for } x \leq -L, \quad (\tilde{u}, \tilde{v}) < (0, 0) \quad \text{for } x \geq L.$$

As a consequence, for large $k > 0$, we have $k(u_1, v_1)(x, y, 0) \geq (\tilde{u}, \tilde{v})(x, y, 0)$ in $\bar{\Omega}$. Setting

$$k^* = \min_{k \geq 0} \{k(u_1, v_1)(x, y, 0) \geq (\tilde{u}, \tilde{v})(x, y, 0) \text{ for } (x, y) \in \bar{\Omega}\},$$

there exists $(x_0, y_0) \in \bar{\Omega}$ such that

$$k^* u_1(x_0, y_0, 0) = \tilde{u}(x_0, y_0, 0) \quad \text{or} \quad k^* v_1(x_0, y_0, 0) = \tilde{v}(x_0, y_0, 0).$$

Now, the conclusion of Proposition 2.1, which obviously holds true for the linearized system (4.1), ensures that $k^*(u_1, v_1) \equiv (\tilde{u}, \tilde{v})$, which is impossible because u_1 is positive while \tilde{u} is positive for large negative x and negative for large positive x .

Passing now to the second part of the statement, assume by contradiction that for $c = c^*$ the curves intersect in two distinct tangency points. By continuity and the monotonicity in β and c , each tangency point gives rise to two intersections for $c > c^*$, $c \sim c^*$, which is excluded by the first part of the proposition. \square

In what follows it will be useful to distinguish c^* according to the position of the first intersection of the curves Σ_D and Σ_d . For this reason we give the following.

DEFINITION 4.2. Denote by (β^*, α^*) the tangency point between the curves $\Sigma_D(c^*)$ and $\Sigma_d(c^*)$, which is unique by Proposition 4.1. We say that

$$c^* \text{ is of } \begin{cases} \text{type 1} & \text{if } \beta^* > 0; \text{ we write } c^* = c_1^* \quad (\text{cf. Figure 4(B)}), \\ \text{type 2} & \text{if } \beta^* < 0; \text{ we write } c^* = c_2^* \quad (\text{cf. Figure 4(E)}), \\ \text{mixed type} & \text{if } \beta^* = 0; \text{ we write } c^* = c_m^*. \end{cases}$$

As an important consequence of Proposition 4.1, we can characterize the type of c^* according to the different parameters of the problem. This will be used in sections 5 and 6 to study some important properties of the asymptotic speed of propagation.

We start with the case $D \leq 2d$ and $c = c_{KPP}$, for which the first relation of (4.15) and (4.16) gives

$$(4.19) \quad \alpha_D^+(c_{KPP}, 0) = \frac{c_{KPP}}{D} \geq \frac{c_{KPP}}{2d} = \alpha_d^\pm(c_{KPP}, 0).$$

This entails that $c^* < c_{KPP}$ if $D < 2d$, and, therefore, it is of type 1, since $\Sigma_d(c^*)$ is defined for $\beta \geq \hat{\beta}(c^*) > 0$. The same conclusions hold true in the case $D = 2d$, where the curve $\Sigma_D(c_{KPP})$ and the degenerate hyperbola $\Sigma_d(c_{KPP})$ are secant, because $\alpha_D^+(c_{KPP}, 0) = \alpha_d^\pm(c_{KPP}, 0)$ and $\partial_\beta \alpha_D^+(c_{KPP}, 0) = 0$, while $\partial_\beta \alpha_d^-(c_{KPP}, \beta)$ is a negative constant for $\beta > 0$.

For $D > 2d$, instead, if we set

$$(4.20) \quad c_M = \frac{D}{\sqrt{4d(D-d)}} c_{KPP} > c_{KPP},$$

thanks to the first relations of (4.15) and (4.16), we have that

$$(4.21) \quad \Sigma_D(c) \cap \Sigma_d(c) \cap \{\beta = 0\} \neq \emptyset \quad \text{if and only if} \quad c = c_M.$$

We will now show that the value of the second derivatives with respect to β of the left and right branches of Σ_D and Σ_d , evaluated at $(c_M, 0)$, characterizes the type of c^* . Namely, since $\psi_1''(0) = -1/N$, if

$$\frac{-2d\mu R}{N\nu c_M} = \lim_{\beta \downarrow 0} \frac{\partial^2}{\partial \beta^2} \alpha_D^+(c_M, \beta) > \lim_{\beta \downarrow 0} \frac{\partial^2}{\partial \beta^2} \alpha_d^-(c_M, \beta) = \frac{-2d}{\sqrt{c_M^2 - c_{KPP}^2}},$$

then $\Sigma_D(c_M)$ and $\Sigma_d(c_M)$ intersect, apart for $\beta = 0$, for some $\beta > 0$. Proposition 4.1 now entails that the curves do not intersect for $\{\beta \leq 0\}$, and the monotonicity in c of the curves implies that c^* is of type 1. Thanks to (4.20), the above relation reads as

$$D(N\nu - \mu R) > -2d\mu R.$$

Similarly, since $\psi_2''(0) = 1/N$, if

$$\frac{2d\mu R}{N\nu c_M} = \lim_{\beta \uparrow 0} \frac{\partial^2}{\partial \beta^2} \alpha_D^+(c_M, \beta) > \lim_{\beta \uparrow 0} \frac{\partial^2}{\partial \beta^2} \alpha_d^-(c_M, \beta) = \frac{2d}{\sqrt{c_M^2 - c_{\text{KPP}}^2}},$$

which can be equivalently written as

$$D(\mu R - N\nu) > 2d\mu R,$$

then $\Sigma_D(c_M)$ and $\Sigma_d(c_M)$ intersect for $\beta = 0$ and for some $\beta < 0$ and c^* is of type 2.

From this discussion, we have

$$(4.22) \quad c^* = \begin{cases} c_1^* & \text{if } \frac{2d}{D} > 1 - \frac{N\nu}{\mu R}, \\ c_2^* & \text{if } \frac{2d}{D} < 1 - \frac{N\nu}{\mu R} \end{cases}$$

and that, when $\beta^* = 0$, necessarily $c^* = c_m^* = c_M$ and

$$(4.23) \quad \lim_{\beta \downarrow 0} \frac{\partial^2 \alpha_D^+(c_M, \beta)}{\partial \beta^2} = \lim_{\beta \downarrow 0} \frac{\partial^2 \alpha_d^-(c_M, \beta)}{\partial \beta^2} = -\lim_{\beta \uparrow 0} \frac{\partial^2 \alpha_D^+(c_M, \beta)}{\partial \beta^2} = -\lim_{\beta \uparrow 0} \frac{\partial^2 \alpha_d^-(c_M, \beta)}{\partial \beta^2},$$

which is equivalent to $\frac{2d}{D} = 1 - \frac{N\nu}{\mu R}$.

In the case $D \leq 2d$, we have seen in (4.19) that $c^* = c_1^*$, and therefore (4.22) is valid for every choice of the parameters.

With the plane wave solutions constructed in this section we are able to give the following.

Proof of Theorem 1.1(i). Let c^* be the quantity constructed above and (\bar{u}, \bar{v}) the corresponding positive solution of the form (4.2) to the linearized problem (4.1). By the Fisher-KPP hypothesis (1.2), for $k > 0$, $k(\bar{u}, \bar{v})$ is a supersolution to (1.1). Moreover, since the initial datum has bounded support, k can be chosen so that

$$(u_0(x, y), v_0(x, y)) < k(\bar{u}(x, y, 0), \bar{v}(x, y, 0))$$

and, since $(0, 0)$ is a subsolution of (1.1), we have from the comparison principle of Proposition 2.1 that

$$(0, 0) < (u(x, y, t), v(x, y, t)) < k(\bar{u}(x, y, t), \bar{v}(x, y, t)) \quad \text{for all } t > 0.$$

Pick $c > c^*$. Since the α in (4.2) is positive, we have that

$$0 < \sup_{\substack{-x \geq ct \\ |y|=R}} u(x, y, t) < \sup_{-x \geq ct} k e^{\alpha(x+c^*t)} \leq k e^{\alpha(c^*-c)t} \longrightarrow 0 \quad \text{as } t \rightarrow +\infty.$$

The limit for v follows analogously. By the symmetry of the system, the same limits hold true in the case $x \geq ct$. \square

4.2. Generalized subsolutions and proof of (1.6). We now construct some generalized, in the sense of Proposition 2.4, subsolutions to (1.1) which are compactly supported and stationary in the moving frame with velocity $-c$ along the x -direction, that is, for system (2.1). To do so, we will make use of the construction of c^* carried out in section 4.1 and of a variant of Rouché’s theorem from complex analysis, whose proof is given in Appendix A.

PROPOSITION 4.3. *Let c^* be the quantity constructed in section 4.1. Then, for every $\underline{c} < c^*$, there exist $c \in (\underline{c}, c^*)$ and two functions $\underline{u} \in C(\partial\Omega)$, $\underline{v} \in C(\bar{\Omega})$ which are nonnegative, compactly supported, and invariant by rotations in y and such that $\varepsilon(\underline{u}, \underline{v}) \not\equiv (0, 0)$ is a generalized stationary subsolution of (2.1) for all $\varepsilon \in (0, 1]$.*

Proof. Consider the linearization around $v = 0$ of the stationary version of (2.1), i.e.,

$$(4.24) \quad \begin{cases} -d\Delta v(x, y) + cv_x(x, y) = f'(0)v(x, y) & \text{for } (x, y) \in \Omega, \\ -D\Delta_{\partial\Omega}u(x, y) + cu_x(x, y) = \nu v(x, y) - \mu u(x, y) & \text{for } (x, y) \in \partial\Omega, \\ d\partial_n v(x, y) = \mu u(x, y) - \nu v(x, y) & \text{for } (x, y) \in \partial\Omega. \end{cases}$$

Suppose first that c^* is of either type 1 or 2, that is, $c^* = c_j^*$ with $j \in \{1, 2\}$ and $\beta^* \neq 0$ (cf. Definition 4.2). The study performed in section 4.1 concerns the existence of solutions to (4.24) of the form

$$(4.25) \quad (u, v) = e^{\alpha x}(1, \gamma\phi_j(\beta y))$$

with $\alpha, \gamma > 0$, $\beta \in \mathbb{R}$, and ϕ_j defined there. Observe preliminarily that the function ψ_j appearing in the definition of Σ_D in (4.7) or (4.13) is analytic and that the radius of convergence of its Maclaurin series is ∞ . This follows from (4.3), (4.10), and (4.4). As a consequence, we can use the same power series to define $\phi_j(\beta y) := \psi_j(\beta|y|)$ for complex β too, and the search for plane waves in the form (4.2), but now with $\alpha, \beta, \gamma \in \mathbb{C}$, works exactly as in section 4.1 and leads to the systems (4.5) or (4.12) even in this case. Solving such systems amounts to finding intersections between the curves $\Sigma_D(c)$ and $\Sigma_d(c)$ from (4.17), now with α_d^\pm and α_D^\pm defined for $\beta \in \mathbb{C}$. By the definition of c^* given in section 4.1, $\Sigma_D(c)$ and $\Sigma_d(c)$ have real intersections if $c > c^*$, a real tangency point (β^*, α^*) for $c = c^*$ satisfying $\beta^* \neq 0$, and no real intersections if $c < c^*$. Complex intersections are sought for $c < c^*$, $c \sim c^*$. If the tangency is not vertical, then the function

$$h(\xi, \tau) := \alpha_d^k(c^* + \xi, \beta^* + \tau) - \alpha_D^l(c^* + \xi, \beta^* + \tau),$$

(with $k, l \in \{+, -\}$ that have to be chosen accordingly to which branches are tangent for $c = c^*$) when restricted to \mathbb{R}^2 , is analytic in a neighborhood of $(0, 0)$ and satisfies the hypothesis of Theorem A.1. Indeed, $\frac{\partial h}{\partial \xi}(0, 0)$ has a strict sign (positive or negative); moreover, since $h(0, \cdot)$ does not change sign in a neighborhood of $\tau = 0$, the first nonzero derivative of h with respect to τ at $(0, 0)$ has even order and its sign turns out to be opposite to that of $\frac{\partial h}{\partial \xi}(0, 0)$ (see Figure 5).

If the tangent at (β^*, α^*) is vertical, which happens for $D = d$, we can parameterize, thanks to the implicit function theorem, the curves $\Sigma_D(c)$ and $\Sigma_d(c)$ using α instead of β , obtaining two analytic functions whose difference h satisfies the hypothesis of Theorem A.1.

Consider now the case $c^* = c_m^*$, i.e., when $\beta^* = 0$. Observe that, thanks to (4.21), we have $c^* = c_M$. In this case, Σ_D and Σ_d are constructed by attaching two different

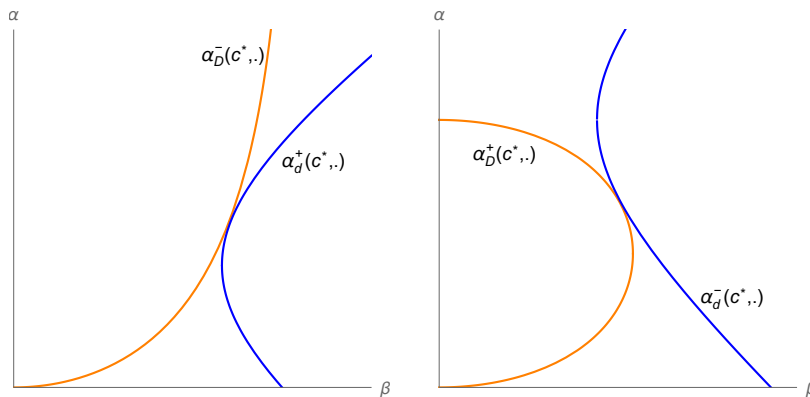


FIG. 5. Possible configurations at the tangency point: $h(0, \cdot) \leq 0$ for $\tau \sim 0$, which implies that $h(0, \cdot)$ is concave, while in this case $\partial_\xi h(0, 0) > 0$ (left); $h(0, \cdot) \geq 0$ for $\tau \sim 0$, which implies that $h(0, \cdot)$ is convex, while in this case $\partial_\xi h(0, 0) < 0$ (right).

analytic curves at the tangency point, and therefore the above defined function h is no longer analytic around $(0, 0)$. We overcome this difficulty by considering just the curves $\alpha_D^+(c, \beta)$ and $\alpha_d^-(c, \beta)$ for $c \sim c^*$ and, say, $\beta \geq 0$, extending them analytically for $\beta < 0$ (which amounts to taking their even prolongation) and then defining h as their difference. Observe that, in this case, Theorem A.1 can be applied with $n \geq 2$, since (4.23) implies that $\frac{\partial^2}{\partial \tau^2} h(0, 0) = 0$.

Summing up, in all the cases, we obtain a solution of $h(\xi, \tau) = 0$ for any $\xi < 0$, $\xi \sim 0$, and $\tau = \tau(\xi) \in \mathbb{C}$. Namely, for $c < c^*$ close enough to c^* , we have a solution $\alpha, \beta, \gamma \in \mathbb{C}$ of (4.5) or (4.12), and moreover, by (A.4) (and also (A.5) in the case $\beta^* = 0$), β (resp., α when $D = d$) has nonzero real and imaginary parts. Using the first equation of the systems, we then get that $\text{Im } \alpha \neq 0$ also if $D \neq d$.

In the end, we have a complex solution (u, v) of (4.24) in the form (4.25). By linearity we conclude that the pair

$$(u_1, v_1) := \text{Re} [(u, v)]$$

is a real solution of (4.24).

Of course, the above construction can still be achieved if $f'(0)$ is replaced by $f'(0) - \delta$ with $0 < \delta < f'(0)$. This penalization only affects the quantity c^* , which is easily seen to converge to the original one as $\delta \downarrow 0$. Hence, for any $\underline{c} < c^*$, we can construct a solution (u_1, v_1) to (4.24) for some $c \in (\underline{c}, c^*)$ and $f'(0)$ penalized by $\delta > 0$, $\delta \sim 0$. Let us denote $\alpha_r := \text{Re } \alpha$, $\alpha_i := \text{Im } \alpha$ and $\varphi(y) := \gamma \phi_j(\beta y) = \gamma \psi_j(\beta |y|)$. Direct computation shows that

$$u_1(x, y) = e^{\alpha_r x} \cos(\alpha_i x), \quad v_1(x, y) = e^{\alpha_r x} |\varphi(y)| \cos(\alpha_i x + \text{Arg } \varphi(y)),$$

where Arg denotes the argument of complex numbers.

It is then apparent that the regions $\{u_1 > 0\}$ and $\{v_1 > 0\} \cap \partial\Omega$ are translations (in x) of one another. Moreover, fixing a connected component \tilde{E} of $\{u_1 > 0\}$, there is at most one connected component \tilde{F} of $\{v_1 > 0\}$ intersecting \tilde{E} ; if there is none, we take as \tilde{F} any component of $\{v_1 > 0\}$. Then, calling $E := \tilde{E} \times [0, +\infty)$ and

$F := \tilde{F} \times [0, +\infty)$ for all $\tilde{\varepsilon} > 0$, the pair $(\underline{u}, \underline{v})$ defined by

$$(\underline{u}(x, y, t), \underline{v}(x, y, t)) := \begin{cases} \tilde{\varepsilon}(u_1(x, y), v_1(x, y)) & \text{in } E \times F, \\ (0, 0) & \text{otherwise} \end{cases}$$

satisfies condition (2.2). Moreover, if $\tilde{\varepsilon}$ is small enough, $f(\tilde{\varepsilon}v_1) \geq (f'(0) - \delta)\tilde{\varepsilon}v_1$, and therefore $(\underline{u}, \underline{v})$ fulfills all the requirements of the proposition. \square

We now have all the elements to give the proof of Theorem 1.1(ii), but, before, we recall a result from [4] that will be needed. Actually, the statement in [4] is related to the case of the half-space (i.e., problem (1.4)), but the proof directly adapts to our case. Anyway, for the sake of completeness and in order to remedy some typos in [4], we will provide it.

LEMMA 4.4 (see [4, Lemma 4.1]). *Let $c_1 < c_2$ be such that any nonnegative, bounded solution $(u, v) \not\equiv (0, 0)$ of (1.1) satisfies, for $i \in \{1, 2\}$,*

$$\begin{aligned} \lim_{t \rightarrow +\infty} u(x + c_i t, y, t) &= \frac{\nu}{\mu}, & \text{locally uniformly in } (x, y) \in \partial\Omega, \\ \lim_{t \rightarrow +\infty} v(x + c_i t, y, t) &= 1, & \text{locally uniformly in } (x, y) \in \bar{\Omega}. \end{aligned}$$

Then,

$$\lim_{t \rightarrow +\infty} \sup_{\substack{c_1 t \leq x \leq c_2 t \\ |y|=R}} \left| u(x, y, t) - \frac{\nu}{\mu} \right| = 0, \quad \lim_{t \rightarrow +\infty} \sup_{\substack{c_1 t \leq x \leq c_2 t \\ |y| \leq R}} |v(x, y, t) - 1| = 0.$$

Proof. Let (u, v) be as in the statement, fix $\varepsilon \in (0, \nu/\mu)$, and consider the solutions (u^1, v^1) of (1.1) starting from $(u_0^1, v_0^1) := (\sup u, \sup v)$ and (u^2, v^2) starting from (u_0^2, v_0^2) with $0 \leq u_0^2 \leq \nu/\mu - \varepsilon$, $u_0^2 \not\equiv 0$, $\text{supp } u_0^2 \subset [-1, 1] \times \{|y| = R\}$, and $v_0^2 \equiv 0$. By hypothesis, there exists $T > 0$ such that, for $i \in \{1, 2\}$,

$$(4.26) \quad \sup_{\substack{|y|=R \\ t > T}} \left| u^i(c_1 t, y, t) - \frac{\nu}{\mu} \right| < \frac{\varepsilon}{2}, \quad \sup_{\substack{|y| \leq R \\ t > T}} |v^i(c_1 t, y, t) - 1| < \frac{\varepsilon}{2}.$$

For the same reason, calling $k := \max(1, |c_2 - c_1|T)$, there exists $T' > 0$ such that

$$(4.27) \quad \sup_{\substack{|x| \leq k, |y|=R \\ t > T'}} \left| u(x + c_2 t, y, t) - \frac{\nu}{\mu} \right| < \varepsilon, \quad \sup_{\substack{|x| \leq k, |y| \leq R \\ t > T'}} |v(x + c_2 t, y, t) - 1| < \varepsilon.$$

Fix $\lambda \in [1/2, 1]$ and consider $c = (1 - \lambda)c_1 + \lambda c_2$ and $t > 2T'$.

If $(1 - \lambda)t \leq T$, then applying (4.27) with $x = (c - c_2)t \in [-k, k]$ yields

$$(4.28) \quad \sup_{|y|=R} \left| u(ct, y, t) - \frac{\nu}{\mu} \right| < \varepsilon, \quad \sup_{|y| \leq R} |v(ct, y, t) - 1| < \varepsilon.$$

If instead $(1 - \lambda)t > T$, we have, by construction and (4.27) again,

$$\begin{aligned} u_0^2(x, y) &\leq \left(\frac{\nu}{\mu} - \varepsilon \right) \mathbb{1}_{[-1, 1]}(x) \leq u(x + c_2 \lambda t, y, \lambda t) \leq u_0^1(x, y) \quad \text{for all } (x, y) \in \partial\Omega, \\ v_0^2(x, y) &\leq v(x + c_2 \lambda t, \lambda t) \leq v_0^1(x, y) \quad \text{for all } (x, y) \in \bar{\Omega}. \end{aligned}$$

By the comparison principle, considering the evolution by (1.1) of the above data after time $(1 - \lambda)t$ and at $x = c_1(1 - \lambda)t$, we derive

$$\begin{aligned} u^2(c_1(1 - \lambda)t, y, (1 - \lambda)t) &\leq u(ct, y, t) \leq u^1(c_1(1 - \lambda)t, y, (1 - \lambda)t), \\ v^2(c_1(1 - \lambda)t, y, (1 - \lambda)t) &\leq v(ct, y, t) \leq v^1(c_1(1 - \lambda)t, y, (1 - \lambda)t). \end{aligned}$$

Property (4.26) then allows us to infer (4.28) also in this case. Since λ ranges in $[1/2, 1]$, this shows that, as $t \rightarrow +\infty$, (u, v) converges to $(\nu/\mu, 1)$ uniformly in the section of the cylinder with x between $\frac{c_1+c_2}{2}t$ and c_2t . By exchanging the roles of c_1 and c_2 , we obtain the uniform convergence in the whole section between c_1t and c_2t , as desired. \square

Proof of (1.6). We are going to prove that, for all $\underline{c} \in (0, c^*)$, there exists $c \in (\underline{c}, c^*)$ such that any solution (u, v) to (1.1) with bounded nonnegative initial datum $(u_0, v_0) \not\equiv (0, 0)$ satisfies

$$(4.29) \quad \begin{aligned} \lim_{t \rightarrow +\infty} u(x \pm ct, y, t) &= \frac{\nu}{\mu}, & \text{locally uniformly in } (x, y) \in \partial\Omega, \\ \lim_{t \rightarrow +\infty} v(x \pm ct, y, t) &= 1, & \text{locally uniformly in } (x, y) \in \bar{\Omega}. \end{aligned}$$

Then, (1.6) with c arbitrarily close to c^* will follow from Lemma 4.4 applied with $c_1 = -c = -c_2$. Of course, by the symmetry of the problem, it is sufficient to prove (4.29) in the case of propagation toward the left, i.e., $x - ct$. To do this, we consider the pair

$$(\tilde{u}(x, y, t), \tilde{v}(x, y, t)) := (u(x - ct, y, t), v(x - ct, y, t)).$$

This is a solution to (2.1) with initial datum (u_0, v_0) . From the comparison principle of Proposition 2.1 we have that at, say, $t = 1$, $(\tilde{u}, \tilde{v}) > (0, 0)$. By Proposition 4.3, there exists $c \in (\underline{c}, c^*)$ and a generalized stationary subsolution $(\underline{u}, \underline{v})$, in the sense of Proposition 2.4, to (2.1) which is rotationally invariant in y and lies below (\tilde{u}, \tilde{v}) at $t = 1$. By Proposition 2.4, this order is maintained for all later times, and from Propositions 3.1 and 3.3 we obtain that

$$\left(\frac{\nu}{\mu}, 1\right) \leq \liminf_{t \rightarrow +\infty} (\tilde{u}(x, y, t), \tilde{v}(x, y, t)),$$

locally uniformly in $\bar{\Omega}$. The proof of (4.29) in the case $x - ct$ is thereby achieved thanks to Corollary 3.4 and Remark 3.5(ii). \square

5. Limits for small and large diffusions. In this section we will study how the speed of propagation behaves as a function of D , the diffusion on the boundary of the cylinder. For this reason we will denote it by $c^*(D)$. The next proposition yields the first relation in (1.7), as well as the characterization of the limit c_0 as the speed of propagation for the semidegenerate problem (2.3). Notice that the latter is formally derived from the system (1.1) by letting $D \downarrow 0$.

PROPOSITION 5.1. *The function $D \mapsto c^*(D)$ is increasing and, as $D \downarrow 0$, tends to the (positive) asymptotic speed of spreading of the semidegenerate problem (2.3).*

Proof. It is easily seen from (4.7) and (4.13) that the function $D \mapsto \alpha_D^-(c, \beta)$ is increasing if $\beta > 0$, while $D \mapsto \alpha_D^+$ is decreasing for every $\beta \in \mathbb{R}$. Moreover, from (4.8) and the fact that $\chi_1(\beta)$ is positive and increasing, it follows that $D \mapsto \tilde{\beta}(c, D)$ is

decreasing. Fix now $D > 0$. By the definition of $c^*(D)$, the curves $\Sigma_D(c)$ and $\Sigma_d(c)$ are tangent for $c = c^*(D)$, while the monotonicity of $D \mapsto \alpha_D^\pm$ shows that $\Sigma_{D'}(c^*(D))$ and $\Sigma_d(c^*(D))$ will not touch for $D' > D$. As a consequence $c^*(D') > c^*(D)$, which gives the desired monotonicity.

Let $D < d$ and recall from (4.19) that $c^*(D) = c_1^*(D) < c_{\text{KPP}}$ in such a case. We further have that

$$\min_{\beta} \alpha_D^+(c_1^*, \beta) = \frac{c_1^*}{2D} > \frac{c_1^*}{2d} = \max_{\beta} \alpha_d^-(c_1^*, \beta).$$

It follows that the tangent point between $\Sigma_D(c_1^*)$ and $\Sigma_d(c_1^*)$ is actually between the graphs of $\alpha_D^-(c_1^*, \cdot)$ and $\alpha_d^+(c_1^*, \cdot)$. As $D \downarrow 0$, α_D^- tends locally uniformly in $\beta \in [0, \bar{\beta})$ to the function

$$\alpha_{D,0}^-(c, \beta) := \frac{\chi_1(\beta)}{c} = \frac{-\mu d \beta \psi_1'(\beta R)}{c(d\beta \psi_1'(\beta R) + \nu \psi_1(\beta R))},$$

which is increasing in β and satisfies

$$\alpha_{D,0}^-(c, 0) = 0, \quad \lim_{\beta \uparrow \bar{\beta}} \alpha_{D,0}^-(c, \beta) = +\infty.$$

Moreover, the curve $\alpha_{D,0}^-(c, \cdot)$ increases to $+\infty$ as $c \downarrow 0$, and therefore it does not intersect $\alpha_d^+(c, \cdot)$ for $c \sim 0$. On the other hand, the curves are secant for $c = c_{\text{KPP}}$ and, as a consequence, they are tangent for some value $c_0 \in (0, c_{\text{KPP}})$. This is the desired limit of $c^*(D)$, owing to the locally uniform convergence of α_D^- to $\alpha_{D,0}^-$.

To see that c_0 coincides with the asymptotic speed of spreading for the semidegenerate problem (2.3), it is sufficient to consider the plane waves

$$(\bar{u}, \bar{v}) = e^{\alpha(x+ct)}(1, \gamma \psi_1(\beta |y|))$$

and repeat the arguments of section 4 to construct supersolutions and generalized subsolutions for the system. Indeed, plugging (\bar{u}, \bar{v}) in (2.3) one is led to find, respectively, real and complex intersections between the curves α_d^+ and $\alpha_{D,0}^-$, the limit of α_D^- as $D \downarrow 0$ introduced above. This is precisely the way in which c_0 has been defined. With the super- and subsolutions in hand, in order to conclude one has only to ensure that the comparison principles hold true for (2.3) and the analogous version with an additional transport term in the x -direction. The weak comparison principle can be derived using the standard technique of reducing to strict sub- and supersolutions and then repeating the arguments of [3, 5], while the strong one is given by Proposition 2.5 and Remark 2.6. \square

We complete this section by studying the behavior of $c^*(D)$ as D goes to $+\infty$, giving the proof of the second relation in (1.7).

PROPOSITION 5.2. *As D increases to $+\infty$, $c^*(D)$ increases to $+\infty$ too, since the following limit exists and satisfies*

$$(5.1) \quad 0 < \lim_{D \rightarrow +\infty} \frac{c^*(D)}{\sqrt{D}} < \infty.$$

More precisely, the limit in (5.1) coincides with the asymptotic speed of spreading of the semidegenerate problem (2.4).

Proof. We will prove that both $c_1^*(D)$ and $c_2^*(D)$ increase to $+\infty$ as $D \rightarrow +\infty$ and both satisfy (5.1). Then, the conclusion of the proposition will follow from (4.22). (Observe that, thanks to (4.22), $c^* = c_1^*$ for all $D > 0$ if $1 - \frac{N\nu}{\mu R} \leq 0$, while $c^* = c_2^*$ for sufficiently large D if $1 - \frac{N\nu}{\mu R} > 0$; thus both cases have to be considered.)

The case of $c_1^*(D)$ follows as in the proof of [13, Proposition 7.2], with little modifications.

The case of c_2^* is more involved, since it requires some asymptotic expansions of the generalized hypergeometric function defining ψ_2 ; for this reason we give the details. From the monotonicities in β of α_D^+ and α_d^- we have (see Figure 4(E))

$$(5.2) \quad \alpha_d^-(c_2^*(D), 0) < \lim_{\beta \rightarrow -\infty} \alpha_D^+(c_2^*(D), \beta).$$

To calculate the limit in (5.2), we recall the well known relation between the hypergeometric function ${}_0F_1$ and the Bessel J function [14, p. 100]

$$J_\tau(z) = \frac{1}{\Gamma(\tau+1)} \left(\frac{z}{2}\right)^\tau {}_0F_1\left(\tau+1; -\frac{z^2}{4}\right),$$

which, owing to (4.10) and (4.11), entails

$$\frac{\psi_2(r)}{\psi_2'(r)} = \frac{2(\tau+1)}{r} \frac{{}_0F_1(\tau+1; \frac{r^2}{4})}{{}_0F_1(\tau+2; \frac{r^2}{4})} = i \frac{J_\tau(ir)}{J_{\tau+1}(ir)}.$$

This, together with the following asymptotic expansion for $J_\tau(z)$ in a neighborhood of $|z| = \infty$ (see [14, section 7.21]),

$$J_\tau(z) = \left(\sqrt{\frac{2}{\pi z}} + o\left(\frac{1}{z}\right) \right) \cos\left(z - (2\tau+1)\frac{\pi}{4}\right) + o\left(\frac{1}{z}\right) \sin\left(z - (2\tau+1)\frac{\pi}{4}\right),$$

leads to

$$(5.3) \quad \lim_{r \rightarrow -\infty} \frac{\psi_2(r)}{\psi_2'(r)} = i \lim_{r \rightarrow -\infty} \frac{\cos\left(ir - (2\tau+1)\frac{\pi}{4}\right)}{\sin\left(ir - (2\tau+1)\frac{\pi}{4}\right)} = - \lim_{r \rightarrow -\infty} \frac{1 + e^{2r+i(2\tau+1)\frac{\pi}{2}}}{1 - e^{2r+i(2\tau+1)\frac{\pi}{2}}} = -1.$$

As a consequence, the function $\chi_2(\beta)$ in the definition (4.13) of α_D^+ tends to $-\mu$ as $\beta \rightarrow -\infty$, whence (5.2) reads as

$$(5.4) \quad \frac{1}{2d} \left(1 - \sqrt{1 - \frac{c_{\text{KPP}}^2}{c_2^{*2}(D)}} \right) < \frac{1}{2D} \left(1 + \sqrt{1 + 4\mu \frac{D}{c_2^{*2}(D)}} \right).$$

If $c_2^*(D)$ was bounded as $D \rightarrow +\infty$, (5.4) would give a contradiction (recall that $D \mapsto c_2^*(D)$ is increasing and larger than c_{KPP}), so $c_2^*(D)$ tends to $+\infty$ and (5.4) can be written as

$$(5.5) \quad \left(\frac{c_{\text{KPP}}^2}{2d} + o(1) \right) < \frac{c_2^{*2}(D)}{D} \left(1 + \sqrt{1 + 4\mu \frac{D}{c_2^{*2}(D)}} \right).$$

On the other hand, we have (see Figure 4(E)) $\alpha_D^+(c_2^*(D), 0) < \alpha_d^-(c_2^*(D), 0)$, which gives

$$\frac{1}{D} < \frac{1}{2d} \left(1 - \sqrt{1 - \frac{c_{\text{KPP}}^2}{c_2^{*2}(D)}} \right),$$

that is,

$$\frac{c_2^{*2}(D)}{D} < \frac{c_{\text{KPP}}^2}{4d} + o(1).$$

Therefore, taking the limsup as $D \rightarrow +\infty$ in this relation and the liminf in (5.5), we obtain

$$0 < \liminf_{D \rightarrow +\infty} \frac{c_2^{*2}(D)}{D} \leq \limsup_{D \rightarrow +\infty} \frac{c_2^{*2}(D)}{D} < \infty.$$

It is then natural to perform the change of variables

$$\tilde{c} = \frac{c}{\sqrt{D}}, \quad \tilde{\alpha} = \alpha\sqrt{D}$$

in (4.12), obtaining

$$\begin{cases} -d\frac{\tilde{\alpha}^2}{D} - d\beta^2 + \tilde{c}\tilde{\alpha} = f'(0), \\ -\tilde{\alpha}^2 + \tilde{c}\tilde{\alpha} = \frac{-\mu d\beta\psi_2'(\beta R)}{d\beta\psi_2'(\beta R) + \nu\psi_2(\beta R)}. \end{cases}$$

For $\beta < 0$, the second equation describes the curve $\Sigma_D(\tilde{c})$ introduced in (4.17) with $D = 1$, and therefore the $\tilde{\alpha}$ solutions of the system are bounded independently of D . Thus, taking the limit as $D \rightarrow +\infty$ the system becomes

$$(5.6) \quad \begin{cases} -d\beta^2 + \tilde{c}\tilde{\alpha} = f'(0), \\ -\tilde{\alpha}^2 + \tilde{c}\tilde{\alpha} = \frac{-\mu d\beta\psi_2'(\beta R)}{d\beta\psi_2'(\beta R) + \nu\psi_2(\beta R)}, \end{cases}$$

whose first equation describes a parabola. The first value of \tilde{c} , denoted by \tilde{c}_2^* , for which the two curves of (5.6) intersect, being tangent, provides us with the limit in (5.1).

To see that the limit in (5.1) coincides with the asymptotic speed of spreading for the semidegenerate problem (2.4), one repeats the construction of plane wave solutions of section 4, this time for (2.4). This leads exactly to the system (5.6) and the analogous one with ψ_2 replaced by ψ_1 . Finally, the validity of the needed weak comparison principle follows as in the discussion at the end of the proof of Proposition 5.1, while the strong one is again given by Proposition 2.5 and Remark 2.6. \square

6. Limits for small and large radii. This section is devoted to the proof of Theorem 1.2(ii), i.e., to the study the behavior of c^* as a function of R . For this reason, the dependence on R will be pointed out in all the quantities introduced in the previous sections. We begin with the limit $R \rightarrow 0$.

Proof of the first limit in (1.8). Observe preliminarily that $c^*(R) = c_1^*(R)$ for $R \sim 0$, thanks to (4.22). The function $\chi_1 = \chi_1(\beta, R)$ appearing in the definition (4.7) of α_D^\pm converges locally uniformly to 0 as $R \downarrow 0$. Hence, the functions α_D^\pm converge locally uniformly to the constants c/D and 0, respectively. It then follows from the geometrical construction of c_1^* (see Figure 4), and in particular from the fact that $\Sigma_d(c)$ (which does not depend on R) intersects the β -axis, that $c_1^*(R) \rightarrow 0$ as $R \downarrow 0$. \square

We study now the limit of $c^*(R)$ as $R \rightarrow +\infty$ and its identification with the asymptotic speed of spreading c_∞^* in the half-space, i.e., for problem (1.4). This

speed is derived in [3] in the case $N = 1$, but the arguments easily adapt to higher dimensions, providing the same speed c_∞^* (independent of N) along any direction parallel to the hyperplane $y = 0$. For the sake of completeness, we give some details on how this can be performed.

Derivation of the spreading speed for (1.4). Let us focus on the first component, denoting $x = (z, x') \in \mathbb{R} \times \mathbb{R}^{N-1}$. Plane waves supersolutions can be constructed “ignoring” the extra x' variable, i.e., in the form $(\bar{u}, \bar{v}) = (\bar{u}(z, t), \bar{v}(z, y, t))$, reducing in this way to the situation $N = 1$ considered in [3]. This shows that the asymptotic speed of spreading in the z -direction cannot be larger than the spreading speed obtained in [3], which we denote by c_∞^* .

The same argument cannot be used to obtain the lower bound, because the x' -independent subsolution would have an unbounded support, and this will not allow us to conclude. To obtain a compactly supported subsolution one can proceed as follows.

In the case $D > 2d$, consider plane waves of the form

$$(\bar{u}, \bar{v}) = e^{\alpha(z+ct)} \Phi(x') (1, \gamma e^{\beta y} - \gamma_L e^{-\beta y}),$$

where $\beta < 0$, $L > 0$, and Φ is the Dirichlet principal eigenfunction of $-d\Delta$ in the $(N-1)$ -dimensional ball of radius L , i.e.,

$$\begin{cases} -d\Delta\Phi = \lambda(L)\Phi & \text{in } B_{N-1}(0, L), \\ \Phi = 0 & \text{on } \partial B_{N-1}(0, L). \end{cases}$$

The quantity γ_L is chosen in such a way that \bar{v} vanishes at $y = L$, that is, $\gamma_L = \gamma e^{2\beta L}$, which tends to 0 as $L \rightarrow +\infty$. It is well known that $\lambda(L)$ is positive and converges to 0 as $L \rightarrow +\infty$. As a consequence, if we plug (\bar{u}, \bar{v}) into the linearization of (1.4) around $(0, 0)$, we are reduced to finding intersections in the (β, α) -plane between two curves approaching locally uniformly, as $L \rightarrow +\infty$, respectively,

$$(6.1) \quad \alpha_D^\infty(c, \beta) := \frac{1}{2D} \left(c + \sqrt{c^2 - 4D\chi_\infty(\beta)} \right) \quad \text{with} \quad \chi_\infty(\beta) := \frac{\mu d \beta}{\nu - d\beta},$$

and the half-circle $\mathbb{R}_+ \ni \beta \mapsto \alpha_d^\pm(c, -\beta)$, where $\alpha_d^\pm(c, \beta)$ are the curves defined in (4.14) for $\beta \leq 0$. These are the same curves obtained in [3], which eventually lead to the definition of c_∞^* . In particular, exactly as in [3], if $D > 2d$, we find complex solutions α, β of the system for $c < c_\infty^*$, $c \sim c_\infty^*$, and L large enough. The set where the real part of the associated (\bar{u}, \bar{v}) is positive has connected components which are bounded in z , y and also in x' because Φ vanishes on $\partial B_{N-1}(0, L)$. From this, one eventually gets the compactly supported shifting generalized subsolution.

In the case $D \leq 2d$, we need to construct a compactly supported subsolution moving with any given speed $0 < c < c_\infty^* = c_{\text{KPP}}$. This is achieved, in a standard way, by simply taking a support which does not intersect the boundary with fast diffusion. Namely, call $\lambda_c(L)$ the Dirichlet principal eigenvalue of the operator $-d\Delta + c\partial_z$ in the ball $B_{N+1}(0, L)$, and Φ_c the associated positive eigenfunction. This operator can be reduced to the self-adjoint one $-d\Delta + c^2/(4d)$ by multiplying the functions on which it acts by $e^{cz/(2d)}$. This reveals that $\lambda_c(L) - c^2/(4d) = \lambda_0(L)$, which tends to 0 as $L \rightarrow +\infty$. Hence, since $0 < c < c_{\text{KPP}} = 2\sqrt{df'(0)}$,

$$\lim_{L \rightarrow \infty} \lambda_c(L) = \frac{c^2}{4d} < f'(0).$$

As a consequence, for L large enough, after suitably normalizing Φ_c and extending it

by 0 outside $B_{N+1}(0, L)$, we have that

$$(6.2) \quad (\underline{u}(x, t), \underline{v}(x, y, t)) = (0, \Phi_c(z + ct, x', y - L - 1))$$

is a generalized subsolution to (1.4).

The existence of these subsolutions immediately implies that solutions to (1.4) cannot spread with a speed slower than c_∞^* . It actually implies more: reasoning as in section 3, one can obtain the Liouville-type result for (1.4) and eventually infer that c_∞^* is actually the spreading speed for such a problem.

We now go back to our problem, showing the convergence of the propagation speed for (1.1) to the one for (1.4) as $R \rightarrow +\infty$.

Proof of the second limit in (1.8). We start with the case $D \leq 2d$. We know from (4.22) that $c^*(R) = c_1^*(R)$ in this case. We need to show that $\lim_{R \rightarrow +\infty} c_1^*(R) = c_{KPP}$. Using the log-concavity of ϕ_1 as in section 4.1, we find that the function $R \mapsto \alpha_D^+(c, \beta)$ is decreasing in its domain of definition and that $R \mapsto \alpha_D^-(c, \beta)$ is increasing. Since α_d^\pm do not depend on R , this implies that $c_1^*(R)$ is increasing and that the limit for $R \rightarrow +\infty$ exists.

Fix $0 < c < c_{KPP}$. For L large enough, the pair $(\underline{u}, \underline{v})$ defined before by (6.2) is a generalized subsolution to (1.4), and its support is contained in a closed sphere with radius L which does not intersect the boundary with fast diffusion. Therefore, if $R > L$, after a suitable translation, we can have this support contained in the interior of the cylinder Ω and then get a subsolution to (1.1) as well. As usual, fitting this subsolution below a given solution to (1.1) at time 1 and using the comparison principle, one derives $c_1^*(R) \geq c$. Since this holds for any $0 < c < c_{KPP}$, the proof in the case $D \leq 2d$ is achieved.

Passing to the case $D > 2d$, we know from (4.22) that $c^* = c_2^*$ for large R . Moreover, (5.3) entails that the curve α_D^+ introduced in (4.13) converges locally uniformly to the curve α_D^∞ from (6.1). By continuity, for any given $c > c_\infty^*$, the curve α_D^∞ is strictly secant to the half-circle α_d^\pm , and hence the same is true for α_D^+ , provided R is large enough. We deduce from the construction of c^* performed in section 4.1 that

$$\limsup_{R \rightarrow +\infty} c^*(R) \leq c_\infty^*.$$

On the other hand, if $c < c_\infty^*$, $c \sim c_\infty^*$, since the curve α_D^∞ lies at a positive distance from α_d^\pm , so does α_D^+ for large R , and, therefore, no intersection can occur, which gives

$$\liminf_{R \rightarrow +\infty} c^*(R) \geq c_\infty^*$$

and completes the proof. □

We conclude this section with the proof of the monotonicities and the rest of Theorem 1.2(ii).

Conclusion of the Proof of Theorem 1.2(ii). We have seen in the proof of the second limit of (1.8) that $R \mapsto c_1^*(R)$ is increasing. Conversely, the log-convexity of ψ_2 implies that $R \mapsto \alpha_D^+$, considered for $\beta < 0$, is increasing and therefore $R \mapsto c_2^*(R)$ decreases. With this information in hand, to conclude the proof we only need to determinate whether $c^* = c_1^*$ (type 1) or $c^* = c_2^*$ (type 2) using the conditions (4.22).

The first condition in (4.22) implies that $c^*(R) = c_1^*(R)$ if $D \leq 2d$, and thus $c^*(R)$ is increasing in such case. In the case $D > 2d$, we deduce from (4.22) that

$c^*(R) = c_1^*(R)$ (increasing) if $R < R_M$ and $c^*(R) = c_2^*(R)$ (decreasing) if $R > R_M$ with R_M given by (1.9).

It only remains to prove (1.10), which is equivalent to $c^*(R_M) = c_M$. Thanks to (4.21), it is sufficient to show that $\beta^*(R_M) = 0$. From (4.22) we have that $\beta^*(R) < 0$ for $R > R_M$ and $\beta^*(R) > 0$ for $R < R_M$. As a consequence, up to subsequences (recall that the region of the (β, α) plane where the tangency is possible is bounded), we have that there exist $\beta^+ \leq 0$ and $\beta^- \geq 0$ such that

$$\lim_{R \uparrow R_M} \beta^*(R) = \beta^- \quad \text{and} \quad \lim_{R \downarrow R_M} \beta^*(R) = \beta^+.$$

We deduce that tangency occurs at both β^+ and β^- , and, therefore, Proposition 4.1 entails that $\beta^+ = \beta^- = 0$, which completes the proof. \square

Appendix A. Existence of high-order complex zeros for a class of holomorphic functions. In this section we generalize the theorem given in [3, Appendix B], which proves the existence of complex roots for functions which are, in a neighborhood of a fixed real root, perturbations of polynomials of degree 2 which depend on a parameter. Here we consider functions which behave like polynomials of higher (even) degree and our result is used in the construction of generalized sub-solutions throughout this work (see sections 4.2, 5 and 6). The proof is based on a parametric version of Rouché's theorem and is similar to the one in [13, Proof of Proposition 5.1], but we present it here for the sake of completeness and since we use some slightly different estimates. The result reads like follows.

THEOREM A.1. *Assume $h : \mathbb{R}^2 \rightarrow \mathbb{R}$ is analytic in a neighborhood of $(\xi, \tau) = (0, 0)$ and that there exists $n \in \mathbb{N} \setminus \{0\}$ such that*

$$(A.1) \quad h(0, 0) = 0, \quad \frac{\partial^j h}{\partial \tau^j}(0, 0) = 0 \quad \text{for } 1 \leq j \leq 2n - 1,$$

$$(A.2) \quad \left(\frac{\partial^{2n} h}{\partial \tau^{2n}}(0, 0) \right) \left(\frac{\partial h}{\partial \xi}(0, 0) \right) < 0.$$

Then, the holomorphic extension of h is such that, for $\xi < 0$, $\xi \sim 0$, the equation

$$(A.3) \quad h(\xi, \cdot) = 0$$

admits a complex root $\tau = \tau(\xi)$ which satisfies, for some $k > 1$ independent of ξ ,

$$(A.4) \quad |\operatorname{Re} \tau(\xi)| \leq k |\xi|^{\frac{1}{2n}}, \quad k^{-1} |\xi|^{\frac{1}{2n}} \leq \operatorname{Im} \tau(\xi) \leq k |\xi|^{\frac{1}{2n}}.$$

Moreover, if $n \geq 2$, $k > 1$ can be chosen so that

$$(A.5) \quad k^{-1} |\xi|^{\frac{1}{2n}} < \operatorname{Re} \tau(\xi).$$

Proof. Thanks to the analyticity and (A.1) we have that, in a (complex) neighborhood of $(0, 0)$, h admits a Taylor expansion of the type

$$h(\xi, \tau) = a_{2n} \tau^{2n} + a_1 \xi + h_1(\xi, \tau) \xi + O(\tau^{2n+1}),$$

where

$$(A.6) \quad a_1 = \frac{\partial h}{\partial \xi}(0, 0), \quad a_{2n} = \frac{1}{(2n)!} \frac{\partial^{2n} h}{\partial \tau^{2n}}(0, 0), \quad h_1 = O(|\xi| + |\tau|).$$

As a consequence, (A.3) is equivalent to

$$h_2(\xi, \tau) := a_{2n}\tau^{2n} + a_1\xi = -h_1(\xi, \tau)\xi + O(\tau^{2n+1}).$$

Thanks to (A.2), $h_2(\xi, \cdot) = 0$ admits, for $\xi < 0$, $2n$ complex solutions of the form $\tau_j = \tau_j(\xi) = K(\xi)e^{i\frac{(2j+1)}{2n}\pi}$, $j \in \{0, \dots, 2n - 1\}$, with $K(\xi) := (\frac{a_1\xi}{a_{2n}})^{\frac{1}{2n}}$. The distance between two roots τ_j, τ_l , $j \neq l$, satisfies $|\tau_j - \tau_l| \geq \vartheta K(\xi)$ for some constant ϑ only depending on n . Take $\delta > \frac{1}{2n}$. It follows that, for $|\xi|$ small enough, the unique solution of $h_2(\xi, \tau) = 0$ in the ball of center τ_0 and radius $|\xi|^\delta$, denoted by $B(\tau_0, |\xi|^\delta)$, is $\tau = \tau_0$. Moreover, for $\tau \in \partial B(\tau_0, |\xi|^\delta)$ we have

$$|h_2(\xi, \tau)| = a_{2n}|\tau - \tau_0| \prod_{j=1}^{2n-1} |\tau - \tau_j| \geq a_{2n}|\xi|^\delta (\vartheta K(\xi) - |\xi|^\delta)^{2n-1} \geq k|\xi|^{\delta+1-\frac{1}{2n}}(1+o(1))$$

as $\xi \rightarrow 0$ for some constant $k > 0$. On the other hand, again for $\tau \in \partial B(\tau_0, |\xi|^\delta)$, recalling the last relation of (A.6),

$$|h_1(\xi, \tau)\xi + O(\tau^{2n+1})| \leq O(|\xi| + |\xi|^{\frac{1}{2n}})|\xi| + O(|\xi|^{1+\frac{1}{2n}}) = O(|\xi|^{1+\frac{1}{2n}})$$

as $\xi \rightarrow 0$. As a consequence, taking $(\frac{1}{2n} <) \delta < \frac{1}{n}$, we have that, for $|\xi|$ small enough, $|h_1(\xi, \tau)\xi + O(\tau^{2n+1})| < |h_2(\xi, \tau)|$ on $\partial B(\tau_0, |\xi|^\delta)$. Applying Rouché’s theorem, we obtain that $h(\xi, \cdot)$ has the same number of roots inside $B(\tau_0, |\xi|^\delta)$ as $h_2(\xi, \cdot)$, i.e., one. We call it $\tau(\xi)$. Relations (A.4) and (A.5) immediately follow since

$$\operatorname{Re} \tau(\xi) \in [\operatorname{Re} \tau_0 - |\xi|^\delta, \operatorname{Re} \tau_0 + |\xi|^\delta], \quad \operatorname{Im} \tau(\xi) \in [\operatorname{Im} \tau_0 - |\xi|^\delta, \operatorname{Im} \tau_0 + |\xi|^\delta]$$

and $\operatorname{Re} \tau_0 = K(\xi) \cos(\frac{\pi}{2n})$, $\operatorname{Im} \tau_0 = K(\xi) \sin(\frac{\pi}{2n})$. □

Acknowledgments. The authors would like to acknowledge the anonymous referee for his/her extremely careful reading of the paper and his/her precise and numerous suggestions.

REFERENCES

- [1] D.G. ARONSON AND H.F. WEINBERGER, *Multidimensional nonlinear diffusion arising in population genetics*, Adv. in Math., 30 (1978), pp. 33–76.
- [2] T.Q. BAO, K. FELLNER, AND E. LATOS, *Well-Posedness and Exponential Equilibration of a Volume-Surface Reaction-Diffusion System with Nonlinear Boundary Coupling*, preprint, arXiv:1404.2809v1.
- [3] H. BERESTYCKI, J.-M. ROQUEJOFFRE, AND L. ROSSI, *The influence of a line with fast diffusion in Fisher-KPP propagation*, J. Math. Biol., 66 (2013), pp. 743–766.
- [4] H. BERESTYCKI, J.-M. ROQUEJOFFRE, AND L. ROSSI, *Fisher-KPP propagation in the presence of a line: Further effects*, Nonlinearity, 26 (2013), pp. 2623–2640.
- [5] H. BERESTYCKI, J.-M. ROQUEJOFFRE, AND L. ROSSI, *The shape of expansion induced by a line with fast diffusion in Fisher-KPP equations*, Comm. Math. Phys., 343 (2016), pp. 207–232.
- [6] H.J. BRASCAMP AND E.H. LIEB, *On extensions of the Brunn–Minkowski and Prékopa–Leindler theorems, including inequalities for log concave functions, and with an application to the diffusion equation*, J. Funct. Anal., 22 (1976), pp. 366–389.
- [7] N.R. FARIA ET AL., *The early spread and epidemic ignition of HIV-1 in human populations*, Science, 346 (2014), pp. 56–61.
- [8] R.A. FISHER, *The wave of advantage of advantageous genes*, Ann. Eugen., 7 (1937), pp. 355–369.
- [9] A.N. KOLMOGOROV, I.G. PETROVSKII, AND N.S. PISKUNOV, *Étude de l’équation de la diffusion avec croissance de la quantité de matière et son application à un problème biologique*, Bull. Univ. État Moscou, Sér. Intern. A, 1 (1937), pp. 1–26.

- [10] A. MADZVAMUSE, A.H.W. CHUNG, AND C. VENKATARAMAN, *Stability analysis and simulations of coupled bulk-surface reaction-diffusion systems*, Proc. Roy. Soc. A, 471 (2015), 20140546.
- [11] H.W. MCKENZIE, E.H. MERRILL, R.J. SPITERI, AND M.A. LEWIS, *How linear features alter predator movement and the functional response*, Interface Focus, 2 (2012), pp. 205–216.
- [12] E. NEUMAN, *Inequalities involving modified Bessel functions of the first kind*, J. Math. Anal. Appl., 171 (1992), pp. 532–536.
- [13] A. TELLINI, *Propagation speed in a strip bounded by a line with different diffusion*, J. Differential Equations, 260 (2016), pp. 5956–5986.
- [14] G.N. WATSON, *A Treatise on the Theory of Bessel Functions*, Cambridge University Press, Cambridge, 1944.