

Author Queries

Journal: Development

Manuscript: DEV143545

Please indicate your corrections using the annotation/mark-up tools and do not edit the actual text of the pdf.

Please check the **entire proof** thoroughly, paying particular attention to any text highlighted in red.

Please ensure that all tables, figures and equations are present and in the correct order.

Check carefully that the authors' names, affiliations and the corresponding author's e-mail address are correct.

IMPORTANT: If you submit revised figures, please let us know what has been changed in the figures so that we can check that the files have been substituted in the final proof.

Author funding: It is the responsibility of the corresponding author to provide the relevant funding information from **all** authors. The funding data linked to your article are summarised in a table at the end of the proof ('Funding details'). **Please check that all funders supporting your work and relevant grant numbers are included.** Funder names may have been edited to match the Crossref Open Funder Registry (see <http://search.crossref.org/funding>). Note that this table will not be included in your published paper.

PubMed Central deposition: We offer a free PMC deposition service to authors supported by funders that mandate PMC deposition. If you require deposition and this is not indicated in the Funding section of your proof (in the sentence starting 'Deposited in PMC for release...'), please let us know immediately. **If PMC deposition is requested at a later stage, we reserve the right to charge \$50 for the PMC deposition service.**

Supplementary information: If you have submitted supplementary data, please check that a link has been added before the references and that citations are included in the text. Please note there are no proofs for supplementary data as the files are not edited. If you wish to make any changes to your supplementary data, please provide replacement file(s).

Author contributions: Please provide a statement that specifies the contribution of every author listed on the article. We encourage you to use the [CRediT taxonomy](#) to define individual author contributions.

Data availability: All publicly available datasets supporting your work should be included in the Data availability section. Details should include repository name, identifier such as accession number or doi, and where possible a hyperlink to the URL of the dataset. For more information on our data deposition requirements, see <http://dev.biologists.org/content/journal-policies#data>.

Please answer the hyperlinked queries below and indicate any necessary changes on the proof.

- AQ1 Please provide the department name (if any) for affiliation 2; country name for affiliation 1.
- AQ2 What is meant by 'on the other side'?
- AQ3 Funder names have been edited to match those in the CrossRef registry (<http://search.crossref.org/funding>). Please check. Is MIUR-PRIN 2012 is a grant number?
- AQ4 Please check the new Data availability instructions above. If there are no such data, please delete the Data availability section.
- AQ5 Please provide publisher name and place of publication for Roeder and Yanofsky (2006).
- AQ6 Please send revised versions of Figs 1-3 with the decimal commas replaced with decimal points and with the correct spelling of 'length' in panel 1E.
- AQ7 Should the *y*-axis of the graph be labelled *GFP* expression rather than *PINI* expression (as this is what is being measured)?
- AQ8 'CRFs regulate' or 'CRF regulates'?
- AQ8 Article title is not matching with metadata. Please check.

RESEARCH REPORT

Cytokinin response factors integrate auxin and cytokinin pathways for female reproductive organ development

Mara Cucinotta¹, Silvia Manrique¹, Andrea Guazzotti¹, Nadia E. Quadrelli¹, Marta A. Mendes¹, Eva Benkova² and Lucia Colombo^{1,*}

ABSTRACT

The developmental programme of the pistil is under the control of both auxin and cytokinin, and crosstalk between these factors converges on regulation of the auxin carrier PIN-FORMED 1 (PIN1). Here, we show that in the triple transcription factor mutant *cytokinin response factor 2 (crf2) crf3 crf6* both pistil length and ovule number were reduced. *PIN1* expression was also lower in the triple mutant and the phenotypes could not be rescued by exogenous cytokinin application. *pin1* complementation studies using genomic *PIN1* constructs showed that the pistil phenotypes were only rescued when the PCRE1 domain, to which CRFs bind, was present. Without this domain, *pin* mutants resemble the *crf2 crf3 crf6* triple mutant, indicating the pivotal role of CRFs in auxin-cytokinin crosstalk.

KEY WORDS: Plant hormones, Pistil, Ovule primordia, CRFs, PIN1

INTRODUCTION

In *Arabidopsis*, ovules emerge as lateral organs from the placenta, a meristematic tissue that originates after the fusion of the carpel margin meristem (CMM) (Reyes-Olalde et al., 2013; Schneitz et al., 1995). Placenta formation and ovule growth require auxins. Reduced local auxin biosynthesis or transport causes severe defects in pistil development with a consequent loss of placental tissue and ovules (Nemhauser et al., 2000; Nole-Wilson et al., 2010). The auxin efflux carrier PIN-FORMED 1 (PIN1) is one of the main elements modulating auxin accumulation during all phases of ovule development (Benková et al., 2003; Ceccato et al., 2013). Although *pin1-201* does not develop any flowers, in the *pin1-5* mutant the gynoecium has shorter valves and contains a few ovules (Bencivenga et al., 2012; Sohlberg et al., 2006).

Cytokinins (CKs) positively regulate ovule formation and pistil development. Indeed, mutants that have a reduced capacity for CK production or perception exhibit a dramatic reduction in ovule number and pistil size, and compromised female fertility (Kinoshita-Tsujimura and Kakimoto, 2011; Riefler et al., 2006; Werner et al., 2003). By contrast, increased CK levels results in a bigger pistil with a greater number of ovules compared with wild type, confirming a positive correlation between CK levels and ovule numbers (Bartrina et al., 2011; Bencivenga et al., 2012; Galbiati et al., 2013). It has been shown that CK treatment positively influences the number of ovules per pistil via a strong increase in

PIN1 expression (Bencivenga et al., 2012; Galbiati et al., 2013; Zúñiga-Mayo et al., 2014).

Conversely, in roots, CKs modulate organogenesis by downregulating *PIN1* expression (Dello Ioio et al., 2012; Ruzicka et al., 2009) and PIN1 protein endocytic recycling (Marhavý et al., 2011).

Cytokinin response factors (CRFs) are encoded by closely related members of the *Arabidopsis* AP2 gene family and mediate a large proportion of the CK transcriptional response that functionally overlaps with the B-type ARR-mediated response (Rashotte et al., 2006). Recently, Šimášková and colleagues (2015) found that CRFs bind directly to the PIN1 cytokinin response element (PCRE1) in the *PIN1* promoter and thus modulate *PIN1* expression in response to CKs. Deletion of the PCRE1 cis-regulatory element uncouples *PIN1* transcription from CRF regulation and affects root sensitivity to CKs (Šimášková et al., 2015). Here, we show that CRF2, CRF3 and CRF6 redundantly induce the expression of *PIN1*, which is required for ovule development, supporting the crucial and general role of CRF factors as mediators of auxin-CK crosstalk guiding plant organogenesis.

RESULTS AND DISCUSSION

CRFs are required for placenta elongation and ovule development

In the placenta, CKs promote *PIN1* expression, which is needed for the establishment of the auxin gradient that leads to ovule primordia development (Bencivenga et al., 2012; Benková et al., 2003; Ceccato et al., 2013; Galbiati et al., 2013). Recently, it has been shown that three members of the CRF family, CRF2, CRF3 and CRF6, directly regulate *PIN1* expression upon CK signalling in roots (Šimášková et al., 2015). *CRF2* and *CRF6* promoters were able to drive reporter gene expression in stage 9 and 10 of pistil development, whereas the *CRF3* promoter did not show any activity (Fig. S1). These results are consistent with recently published transcriptomic data of the gynoecial medial domain, which show high expression of *CRF2* and *CRF6* and low expression of *CRF3* (Villarino et al., 2016).

To investigate whether these three CRFs control *PIN1* expression during early stages of pistil development, we have analysed *crf2*, *crf3* and *crf6* single, double and triple mutants. Ovule counts were performed on ovules from stage 1-II (primordia) to stage 2-I (finger-like), which corresponds to stages 9 and 10 of pistil development [according to Schneitz et al. (1995) and Roeder and Yanofsky (2006)]. Analysis of single *crf3* and *crf6* mutants, as well as the *crf3 crf6* double mutant, did not reveal any significant difference in ovule number compared with wild type, whereas the single *crf2* and the double *crf2 crf3* mutant showed a small but significant decrease in ovule number (Fig. S2). Instead, the *crf2 crf6* double mutant presented ovule numbers comparable to wild type, suggesting a compensatory mechanism between *crf2* and *crf6*

¹Dipartimento di BioScienze, Università degli studi di Milano, Via Celoria 26, Milano 20133. ²Institute of Science and Technology Austria, Am Campus 1, Klosterneuburg 3400, Austria.

*Author for correspondence (lucia.colombo@unimi.it)

 L.C., 0000-0001-8415-1399

63
64
65
66
67
68
69
70
71
72
73
74
75
76
77
78
79
80
81
82
83
84
85
86
87
88
89
90
91
92
93
94
95
96
97
98
99
100
101
102
103
104
105
106
107
108
109
110
111
112
113
114
115
116
117
118
119
120
121
122
123
124

(Fig. S2). Finally, in the *crf2 crf3 crf6* (*crf2/3/6*) triple mutant, a reduction of 31.68% in ovule number was observed with respect to the wild type (Fig. 1A). Wild-type *Col-0* plants grown under long-day conditions developed on average (mean±s.e.m.) 46.36±1.24 ovules per pistil whereas 31.67±2.01 ovules were formed in the *crf2/3/6* triple mutant pistils (Fig. 1A).

Placenta length was measured at the same developmental stages. In the wild type, the average length of the placenta was found to be 351±12 µm at stage 9 and 517±12 µm at stage 10, whereas in the *crf2/3/6* mutant it was significantly shorter (269±20 µm at stage 9 and 436±19 µm at stage 10) (Fig. 1B). Ovule density (number of ovules per µm placenta) was also reduced in the *crf2/3/6* mutant (Fig. 1C).

CK treatment results in an increase in pistil size and ovule number (Bencivenga et al., 2012; Galbiati et al., 2013). Because CRFs regulate the transcriptional response to cytokinins (Rashotte et al., 2006), we tested the CK response in wild type and the *crf2/3/6* triple mutant. Wild-type plants treated with the synthetic cytokinin 6-benzylaminopurine (BAP) yielded 60% more ovules and a 58% longer placenta than untreated plants (Fig. 1D,E). The *crf2/3/6* triple mutant treated with BAP produced 19% more ovules and an increase in placenta length of 32% (Fig. 1D,E), indicating that the capacity to respond to CKs is strongly reduced in the absence of *CRF2*, *CRF3* and *CRF6* activities.

CRFs regulate *PIN1* transcription during pistil growth

To investigate whether the pistil phenotypes observed in the *crf2/3/6* mutant were due to changes in *PIN1* expression, we performed real-time qPCR experiments. In the *crf2/3/6* triple mutant, *PIN1* expression was significantly lower than in the wild type (Fig. 2A). As previously reported (Bencivenga et al., 2012; Galbiati et al., 2013), *PIN1* expression was at least twofold higher in BAP-treated wild-type inflorescences. Interestingly, the level of *PIN1* mRNA in the *crf2/3/6* mutant did not increase upon CK application,

suggesting that CRFs are required for CK-dependent *PIN1* expression (Fig. 2A).

In roots, CRFs regulate *PIN1* expression by binding the PCRE1 sequence in the *PIN1* promoter (Šimášková et al., 2015); therefore, we analysed plants carrying a Δ *PIN1::PIN1-GFP* construct in which a *PIN1* promoter lacking the PCRE1 element drives the expression of a fully functional *PIN1-GFP* fusion protein. Real-time qPCR experiments were performed on *GFP* instead of *PIN1* in order to avoid the detection of endogenous *PIN1*. The level of *PIN1-GFP* transcripts in Δ *PIN1::PIN1-GFP* inflorescences was lower than that in plants carrying the same fusion protein construct under the control of a wild-type version of the *PIN1* promoter (Fig. 2B). The reduction in *PIN1-GFP* expression under control of the Δ *PIN1* promoter was also evident by confocal microscopy in placenta cells and ovule primordia at stages I-I and 1-II (compare Fig. 2C,D with Fig. 2E,F). Although *PIN1* expression was dramatically reduced (Fig. 2B), *PIN1-GFP* protein in Δ *PIN1::PIN1-GFP* plants was correctly localized at the membrane of placenta cells (Fig. 2E,F).

To understand whether PCRE1 is the only element in the *PIN1* promoter required for CK-mediated *PIN1* expression in inflorescences, we also analysed *GFP* expression after treatment with CKs in *PIN1::PIN1-GFP* and Δ *PIN1::PIN1-GFP* plants. Interestingly, *GFP* expression increased in both *PIN1::PIN1-GFP* and Δ *PIN1::PIN1-GFP* inflorescences compared with the control (mock treatment) (Fig. 2B), suggesting that CRFs might bind to other regions of the *PIN1* promoter besides PCRE1. The possibility that other CK-induced transcription factors regulate *PIN1* expression is unlikely as *PIN1* expression remains unchanged in CK-treated *crf2/3/6* inflorescences (Fig. 2A). The same reduction of *GFP* expression in Δ *PIN1::PIN1-GFP* compared with *PIN1::PIN1-GFP* was observed in a second independent Δ *PIN1::PIN1-GFP* line (Fig. S3). Also, in this second line (Δ *PIN1::PIN1-GFP_2*) *GFP* expression increased after BAP treatment, reconfirming the results obtained with line 1 (Fig. S3). These results confirm that CRFs are

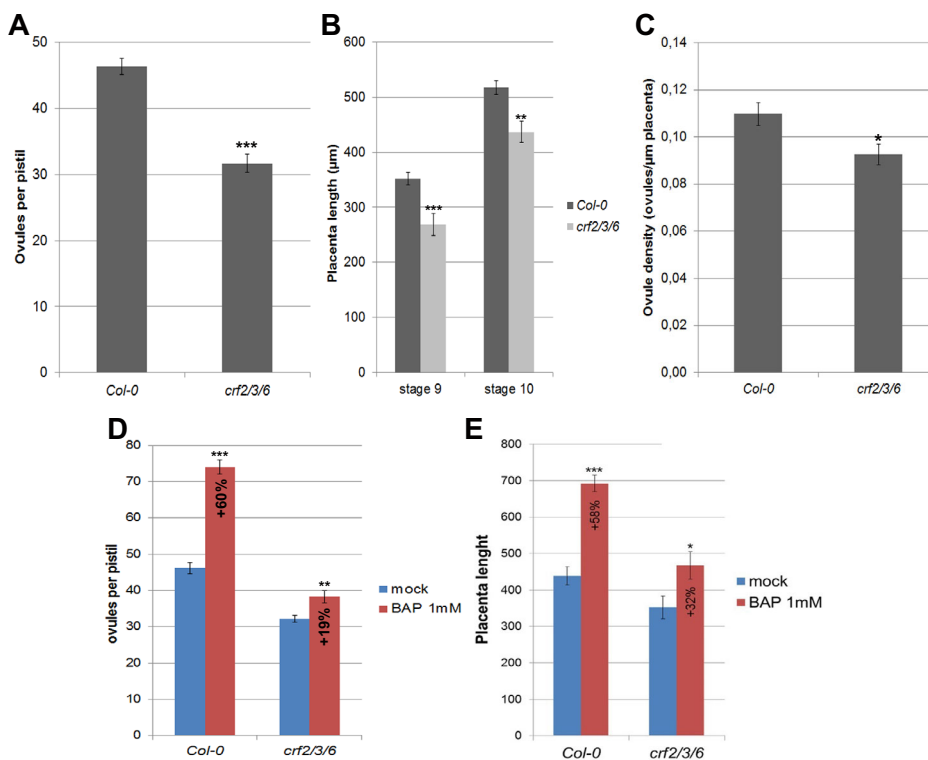


Fig. 1. CRFs influence pistil length and ovule numbers. (A-C) Number of ovules (A), placenta length (B) and ovule density (C) of wild-type (*Col-0*) and *crf2/3/6* pistils. (D,E) Ovule number (D) and placenta length measurements (E) in mock- and 1 mM BAP-treated wild-type and *crf2/3/6* inflorescences 48 h after treatment. Mean±s.e.m. is shown. * $P < 0.05$; ** $P < 0.01$; *** $P < 0.001$ (Student's *t*-test; $n = 20$). Percentage increment is also reported in D,E.

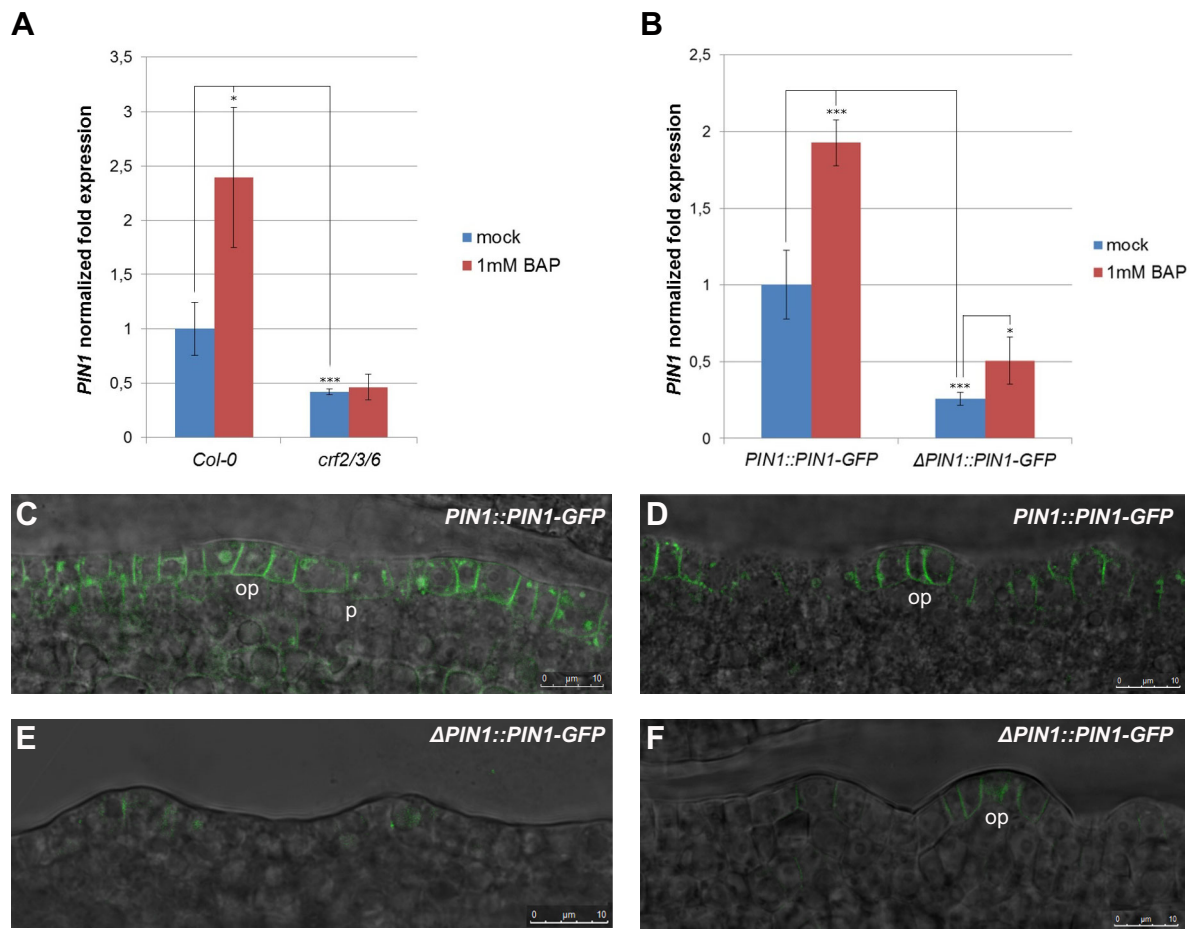


Fig. 2. CRFs regulate *PIN1* expression. (A) *PIN1* expression levels in mock- and BAP-treated pre-fertilization inflorescences of wild-type and *crf2/3/6* triple mutant. (B) *GFP* expression levels in mock- and BAP-treated *PIN1::PIN1-GFP* and Δ *PIN1::PIN1-GFP* pre-fertilization inflorescences. Error bars indicate the s.e.m. based on three biological replicates. * $P < 0.05$; *** $P < 0.001$ (Student's *t*-test; $n = 3$). Data were normalized with respect to *ACT8-2* and *UBI10* mRNA levels. (C-F) Confocal microscope images of *PIN1::PIN1-GFP* (C,D) and Δ *PIN1::PIN1-GFP* (E,F) placenta cells and ovule primordia at stages 1-I (C,E) and 1-II (D,F). Scale bars: 10 μ m. op, ovule primordia; p, placenta.

required to regulate the expression of *PIN1* in the pistil. The possibility of other CRF regulatory regions needs to be investigated as the lack of PCRE1 does not cause complete CK insensitivity. It is important to recall that in roots *PIN1::PIN1-GFP* expression is reduced by CKs and that Δ *PIN1::PIN1-GFP* is completely CK insensitive (Šimášková et al., 2015), indicating that there might be a specific regulation of *PIN1* expression depending on the developmental context.

PCRE1 is required for pistil development and ovule primordia formation

Introducing Δ *PIN1::PIN1-GFP* in a wild-type *A. thaliana* does not lead to any abnormalities in pistil and ovule development (Fig. 3A-C). To examine the functional significance of the CRF regulatory regions in the *PIN1* promoter (PCRE1), we introgressed Δ *PIN1::PIN1-GFP* into the *pin1-5* mutant. *pin1-5* is a hypomorphic mutant that has shorter pistils and develops an average of nine ovules per pistil (Bencivenga et al., 2012; Sohlberg et al., 2006). Confirmation of the presence of Δ *PIN1::PIN1-GFP* construct in the *pin1* mutant is shown in Fig. S4.

PIN1::PIN1-GFP completely rescued the *pin1-5* mutant phenotype whereas Δ *PIN1::PIN1-GFP* was unable to rescue the pistil growth phenotype of *pin1-5* (Fig. 3A-C). The placenta length of *pin1-5* Δ *PIN1::PIN1-GFP* remained the same as in *pin1-5*

(Fig. 3A,B). Placenta length in *pin1-5* Δ *PIN1::PIN1-GFP* was similar to that of the *crf2/3/6* mutant (Fig. 3A,B). This suggests that PCRE1-mediated transcriptional regulation of *PIN1* is necessary for correct elongation of the pistil. Furthermore, ovule density in *pin1-5* Δ *PIN1::PIN1-GFP* (0.0902 ± 0.008 ovules/ μ m placenta) was similar to that of *crf2/3/6* (0.0926 ± 0.004 ovules/ μ m placenta). By contrast, Δ *PIN1::PIN1-GFP* did not rescue the ovule number phenotype of *pin1-5*, raising the ovule count of *pin1-5* from an average of 8.5 ± 1.7 to 28.67 ± 1.84 (Fig. 3C).

These results suggest that PCRE1-mediated control of *PIN1* expression is required for determining the correct size of the pistils, whereas it seems to be less relevant for ovule formation. However, it should be taken into account that transcription of *pin1-5* (which encodes a partially functional protein) could be induced by CKs. For this reason, we also analysed the phenotype of Δ *PIN1::PIN1-GFP* in *pin1-201* mutant. This mutant fails to develop any lateral organs due to a loss-of-function mutation (Fig. S5). Pistil length in Δ *PIN1::PIN1-GFP* *pin1-201* is similar to that in Δ *PIN1::PIN1-GFP* *pin1-5* and *crf2/3/6* (Fig. 2A,B). Regarding the ovule number, Δ *PIN1::PIN1-GFP* *pin1-201* showed a reduction in comparison with Δ *PIN1::PIN1-GFP* *pin1-5* and *crf2/3/6* (Fig. 3C). The reduction in ovule number highlighted in Δ *PIN1::PIN1-GFP* *pin1-201* compared with Δ *PIN1::PIN1-GFP* *pin1-5* might be explained by residual function of the *PIN1-5* mutant protein. The

311
312
313
314
315
316
317
318
319
320
321
322
323
324
325
326
327
328
329
330
331
332
333
334
335
336
337
338
339
340
341
342
343
344
345
346
347
348
349
350
351
352
353
354
355
356
357
358
359
360
361
362
363
364
365
366
367
368
369
370
371
372

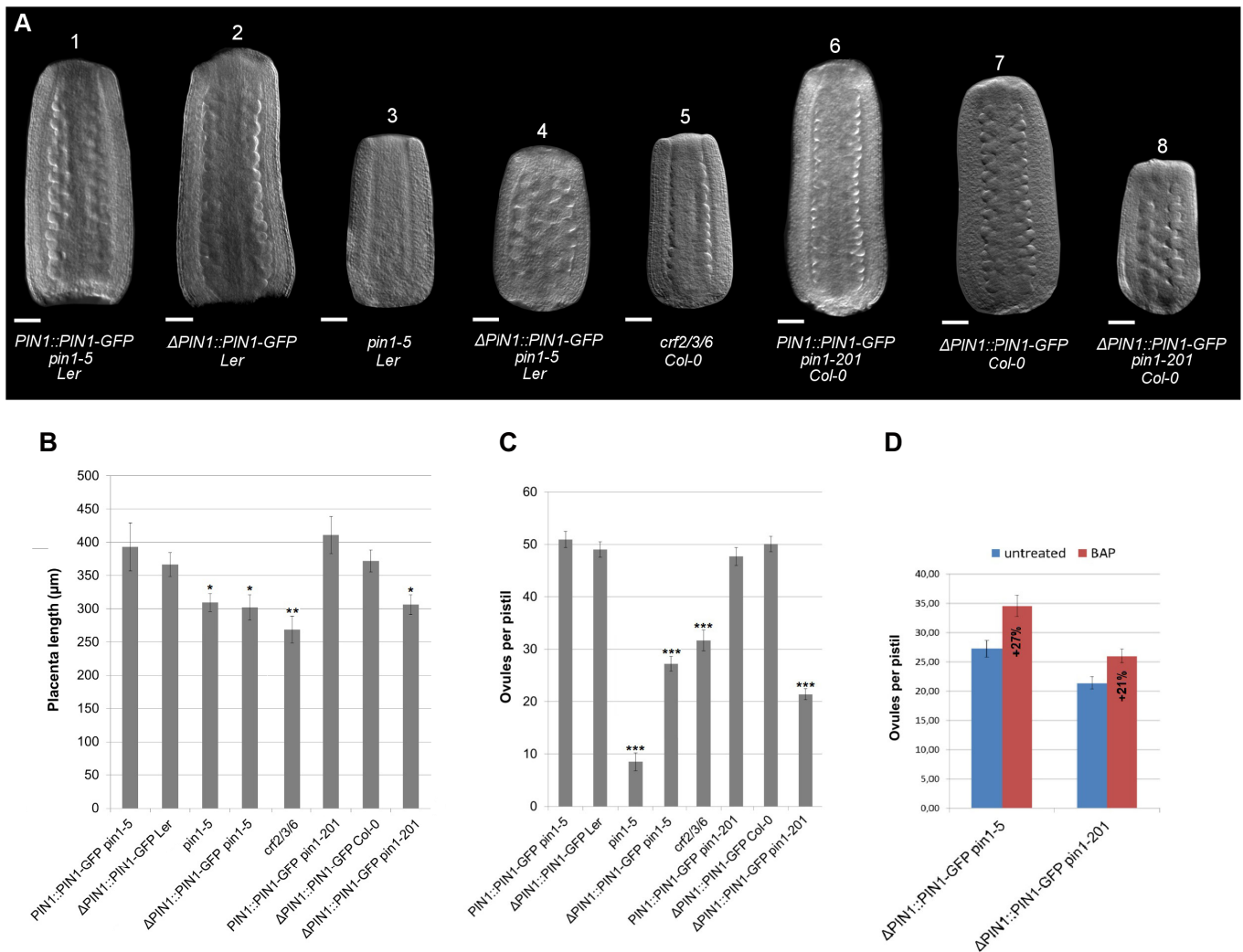


Fig. 3. CRF regulate PIN1 expression required for pistil growth. (A) DIC images of pistils with visible lines of ovules in *Ler* and *Col-0* genetic backgrounds. Scale bars: 50 µm. (B,C) Placenta length (B) and ovule number (C) in xxxxxxxxxxxxxx. (D) Ovule number measurements in untreated and 1 mM BAP-treated Δ PIN1::PIN1-GFP *pin1-5* and Δ PIN1::PIN1-GFP *pin1-201* inflorescences 48 h after treatment. Percentage increment is also reported in the graphs. Mean±s.e.m is shown. **P*<0.05; ***P*<0.01; ****P*<0.001 (Student's *t*-test; *n*=20).

analysis of Δ PIN1::PIN1-GFP in both *pin1-5* and *pin1-201* allelic backgrounds confirmed that pistil elongation is affected when PIN1 expression is uncoupled from regulation of CRFs. Finally, we also tested the capacity of Δ PIN1::PIN1-GFP *pin1-5* and Δ PIN1::PIN1-GFP *pin1-201* to respond to CK by checking the number of ovules after BAP treatment. Interestingly, both lines are still able to respond to CK showing an increase in the number of ovules per pistil of 27% and 21%, respectively (Fig. 3D). This result is in agreement with the fact that PIN1-GFP expression level increases in Δ PIN1::PIN1-GFP after BAP treatment (Fig. 2B; Fig. S3), confirming the importance of CRF-mediated PIN1 expression for pistil elongation.

The reduction in pistil size observed in *crf* mutants could be due to defective cell division or cell expansion processes or a combination of both. Auxin plays a prominent role in controlling cell expansion. For example, elongation of the primary root and the hypocotyl require specific auxin transport to determine their expansive growth rates (Rayle and Cleland, 1992; Spartz et al., 2012). Interestingly, a reduction in pistil and anther elongation has been reported for *tir1afb1afb2afb3*, a quadruple mutant with compromised auxin signalling (Cecchetti et al., 2008). Our

understanding of the influence of auxin on the cell cycle is still fragmentary, but primary evidence indicates that auxin acts on several targets involved in the control of cell cycle (Perrot-Rechenmann, 2010). On the other side, the ability of CKs to promote cell division, in particular through their action on D-type cyclins, was described several years ago (Dewitte et al., 2007; Riou-Khamlichi et al., 1999), and it has been recently been shown that the transcript levels of several cell cycle-related genes were decreased in roots of the *crf1,3,5,6* quadruple mutant (Raines et al., 2016).

In summary, we propose that PIN1 expression mediated by CRFs is required for the determination of pistil size. The greater number of ovule primordia in CK-treated pistils correlates with the increased pistil size. Therefore, it is likely that when enough space occurs between two ovules, CRFs and/or other CKs-dependent factors induce PIN1 expression to create a new auxin maximum.

MATERIALS AND METHODS

Plant materials and treatments

Arabidopsis wild-type and mutant plants were grown at 22°C under long-day conditions (16 h light, 8 h dark) in a greenhouse. *crf2-2* seeds (Schlereth et al., 2010) were provided by Dolf Weijers (xxx location/affiliation? xxx).

PIN1::PIN1-GFP (Benková et al., 2003), *pin1-5* mutant (Bencivenga et al., 2012; Sohlberg et al., 2006), *pin1-201* (Furutani et al., 2004), *crf3-1*, *crf6-S2*, *crf3-1 crf6-S2*, *crf2-2 crf3-1 crf6-S2*, Δ *PIN1::PIN1-GFP*, Δ *PIN1-GFP pin1-201* and *PIN1::PIN1-GFP pin1-201* (Šimáškova et al., 2015) lines have been described previously. BAP treatment was performed on inflorescences as detailed by Bencivenga et al. (2012).

Quantitative real-time qPCR analysis

Total RNA was extracted from inflorescences at pre-fertilization stages using the Macherey-Nagel Nucleospin RNA Plant Kit and then reverse transcribed using the Promega ImProm-II RT System. Gene expression analysis was performed using the Bio-Rad iQ5 Multicolor RT-PCR Detection System with the GeneSpin SYBR Green PCR Master Mix. *ACTIN 2-8* and *UBIQUITIN 10* were used as reference genes for normalization of transcript levels. RT-PCR primers used in this work were: RT2017fw 5'-TGTTCCATGGCCAACACTTG-3' and RT2018rev 5'-AAGTCGTGCCGCTTCATATG-3' for GFP, RT509fw 5'-TGGTCCC-TCATTTCCTCAA-3' and RT510rev 5'-GGCAAAGCTGCCTGGATA-AT-3' for PIN1, RT147fw 5'-CTGTTCACGGAACCAATTC-3' and RT148rev 5'-GGAAAAGGTCTGACCGACA-3 for UBI10, and RT861fw 5'-CTCAGGTATTGCAGA CCGTATGAG-3' and RT862rev 5'-CTGGACCTGCTTCATACACTCTG-3' rev for ACT2-8.

Counting ovule number by differential interference contrast (DIC) microscopy

Inflorescences were fixed with ethanol/acetic acid (9:1) overnight, rehydrated with 90% and 70% ethanol and cleared in a chloral hydrate/glycerol/water solution (8 g: 1 ml: 3 ml) for at least 2 h before dissection under a stereomicroscope. Pistils were observed using a Zeiss Axioptot D1 microscope equipped with DIC optics. Images were recorded using a Zeiss AxioCam MRC5 camera with Axiovision software version 4.1. Only ovules of pistils in which both carpels remained intact after slide preparation and where all four rows of ovules were visible and distinguishable were counted.

Confocal microscopy

For confocal laser scanning microscopy (CLSM), fresh material was collected, mounted in water and analysed immediately. CLSM analysis was performed using a Leica TCS SPE microscope with a 488 nm argon laser line for excitation of GFP fluorescence. Emissions were detected between 505 and 580 nm. Images were collected in multi-channel mode and overlay images were generated using Leica analysis software LAS AF 2.2.0.

Acknowledgements

We would like to thank Andrew MacCabe and Edward Kiegle for editing the paper.

Competing interests

The authors declare no competing or financial interests.

Author contributions

Designed the experiments: M.C., E.B., L.C.; Performed the experiments: M.C., S.M., A.G., N.E.Q., M.A.M.; Analysed the data: M.C., E.B., L.C.; Contributed reagents/materials/analysis tools: E.B., L.C.; Wrote the paper: M.C., L.C.

Funding

M.C. was funded by a PhD fellowship from the Università degli Studi di Milano-Bicocca and from Ministero dell'Istruzione, dell'Università e della Ricerca (MIUR) [MIUR-PRIN 2012]. L.C. is also supported by MIUR [MIUR-PRIN 2012].

Data availability

XXXXXXXXXXXXXXXXXXXXXXXXXXXX

Supplementary information

Supplementary information available online at <http://dev.biologists.org/lookup/doi/10.1242/dev.143545.supplemental>

References

Bartrina, I., Otto, E., Strnad, M., Werner, T. and Schmillig, T. (2011). Cytokinin regulates the activity of reproductive meristems, flower organ size, ovule formation, and thus seed yield in *Arabidopsis thaliana*. *Plant Cell* **23**, 69-80.

Bencivenga, S., Simonini, S., Benková, E. and Colombo, L. (2012). The transcription factors BEL1 and SPL are required for cytokinin and auxin signaling during ovule development in *Arabidopsis*. *Plant Cell* **24**, 2886-2897.

Benková, E., Michniewicz, M., Sauer, M., Teichmann, T., Seifertová, D., Jürgens, G. and Friml, J. (2003). Local, efflux-dependent auxin gradients as a common module for plant organ formation. *Cell* **115**, 591-602.

Ceccato, L., Masiero, S., Sinha Roy, D., Bencivenga, S., Roig-Villanova, I., Ditengou, F. A., Palme, K., Simon, R. and Colombo, L. (2013). Maternal control of PIN1 is required for female gametophyte development in *Arabidopsis*. *PLoS ONE* **8**, e66148.

Cecchetti, V., Altamura, M. M., Falasca, G., Costantino, P. and Cardarelli, M. (2008). Auxin regulates *Arabidopsis* anther dehiscence, pollen maturation, and filament elongation. *Plant Cell* **20**, 1760-1774.

Dello Iorio, R., Galinha, C., Fletcher, A. G., Grigg, S. P., Molnar, A., Willemsen, V., Scheres, B., Sabatini, S., Baulcombe, D., Maini, P. K. et al. (2012). A PHABULOSA/cytokinin feedback loop controls root growth in *Arabidopsis*. *Curr. Biol.* **22**, 1699-1704.

Dewitte, W., Scofield, S., Alcasabas, A. A., Maughan, S. C., Menges, M., Braun, N., Collins, C., Nieuwland, J., Prinsen, E., Sundaresan, V. et al. (2007). *Arabidopsis* CYCD3 D-type cyclins link cell proliferation and endocycles and are rate-limiting for cytokinin responses. *Proc. Natl. Acad. Sci. USA* **104**, 14537-14542.

Furutani, M., Vernoux, T., Traas, J., Kato, T., Tasaka, M. and Aida, M. (2004). PIN-FORMED1 and PINOID regulate boundary formation and cotyledon development in *Arabidopsis* embryogenesis. *Development* **131**, 5021-5030.

Galbiati, F., Sinha Roy, D., Simonini, S., Cucinotta, M., Ceccato, L., Cuesta, C., Simaskova, M., Benková, E., Kamiuchi, Y., Aida, M. et al. (2013). An integrative model of the control of ovule primordia formation. *Plant J.* **76**, 446-455.

Kinoshita-Tsujimura, K. and Kakimoto, T. (2011). Cytokinin receptors in sporophytes are essential for male and female functions in *Arabidopsis thaliana*. *Plant Signal. Behav.* **6**, 66-71.

Marhavý, P., Bielach, A., Abas, L., Abuzeineh, A., Duclercq, J., Tanaka, H., Pařezová, M., Petrášek, J., Friml, J., Kleine-Vehn, J. et al. (2011). Cytokinin Modulates Endocytic Trafficking of PIN1 Auxin Efflux Carrier to Control Plant Organogenesis. *Dev. Cell* **21**, 796-804.

Nemhauser, J. L., Feldman, L. J. and Zambryski, P. C. (2000). Auxin and ETTIN in *Arabidopsis* gynoecium morphogenesis. *Development* **127**, 3877-3888.

Nole-Wilson, S., Azhakanandam, S. and Franks, R. G. (2010). Polar auxin transport together with aintegumenta and revoluta coordinate early *Arabidopsis* gynoecium development. *Dev. Biol.* **346**, 181-195.

Perrot-Rechenmann, C. (2010). Cellular responses to auxin: division versus expansion. *Cold Spring Harb. Perspect. Biol.* **2**, a001446-a001446.

Raines, T., Shanks, C., Cheng, C.-Y., McPherson, D., Argueso, C. T., Kim, H. J., Franco-Zorrilla, J. M., López-Vidriero, I., Solano, R., Vaňková, R. et al. (2016). The cytokinin response factors modulate root and shoot growth and promote leaf senescence in *Arabidopsis*. *Plant J.* **85**, 134-147.

Rashotte, A. M., Mason, M. G., Hutchison, C. E., Ferreira, F. J., Schaller, G. E. and Kieber, J. J. (2006). A subset of *Arabidopsis* AP2 transcription factors mediates cytokinin responses in concert with a two-component pathway. *Proc. Natl. Acad. Sci. USA* **103**, 11081-11085.

Rayle, D. L. and Cleland, R. E. (1992). The acid growth theory of auxin-induced cell elongation is alive and well. *Plant Physiol.* **99**, 1271-1274.

Reyes-Olalde, J. I., Zuñiga-Mayo, V. M., Chávez Montes, R. A., Marsch-Martínez, N. and de Folter, S. (2013). Inside the gynoecium: at the carpel margin. *Trends Plant Sci.* **18**, 644-655.

Riefler, M., Novak, O., Strnad, M. and Schmu, T. (2006). *Arabidopsis* cytokinin receptor mutants reveal functions in shoot growth, leaf senescence, seed size, germination, root development, and cytokinin metabolism. *Plant Cell* **18**, 40-54.

Riou-Khamlichí, C., Huntley, R., Jacquard, A. and Murray, J. A. H. (1999). Cytokinin activation of *Arabidopsis* cell division through a D-type cyclin. *Science* **283**, 1541-1544.

Roeder, A. H. K. and Yanofsky, M. F. (2006). *Fruit development in Arabidopsis*.

Ruzicka, K., Šimáškova, M., Duclercq, J., Petrášek, J., Zazimalová, E., Simon, S., Friml, J., Van Montagu, M. C. E. and Benková, E. (2009). Cytokinin regulates root meristem activity via modulation of the polar auxin transport. *Proc. Natl. Acad. Sci. USA* **106**, 4284-4289.

Schlereth, A., Möller, B., Liu, W., Kientz, M., Flipse, J., Rademacher, E. H., Schmid, M., Jürgens, G. and Weijers, D. (2010). MONOPTEROS controls embryonic root initiation by regulating a mobile transcription factor. *Nature* **464**, 913-916.

Schneitz, K., Hulskamp, M. and Pruitt, R. E. (1995). Wild-type ovule development in *Arabidopsis thaliana*: a light microscope study of cleared whole-mount tissue. *Plant J.* **7**, 731-749.

Šimáškova, M., O'Brien, J. A., Khan, M., Van Noorden, G., Ötvös, K., Vieten, A., De Clercq, I., Van Haperen, J. M. A., Cuesta, C., Hoyerová, K. et al. (2015). Cytokinin response factors regulate PIN-FORMED auxin transporters. *Nat. Commun.* **6**, 8717.

Sohlberg, J. J., Myrenäs, M., Kuusk, S., Lagercrantz, U., Kowalczyk, M., Sandberg, G. and Sundberg, E. (2006). STY1 regulates auxin homeostasis and

AQ3

AQ4

AQ5

- 621 affects apical-basal patterning of the Arabidopsis gynoecium. *Plant J.* **47**, 683
 622 112-123. 684
- 623 **Spartz, A. K., Lee, S. H., Wenger, J. P., Gonzalez, N., Itoh, H., Inzé, D., Peer,** 685
 624 **W. A., Murphy, A. S., Overvoorde, P. J. and Gray, W. M.** (2012). The SAUR19 686
 625 subfamily of SMALL AUXIN UP RNA genes promote cell expansion. *Plant J.* **70**, 687
 626 978-990. 688
- 627 **Villarino, G. H., Hu, Q., Manrique, S., Flores-Vergara, M., Sehra, B., Robles, L.,** 689
 628 **Brumos, J., Stepanova, A. N., Colombo, L., Sundberg, E. et al.** (2016). 690
 629 Transcriptomic Signature of the *SHATTERPROOF2* Expression Domain Reveals 691
 630 the Meristematic Nature of Arabidopsis Gynoecial Medial Domain. *Plant Physiol.* 692
 631 **171**, 42-61. 693
- 632 **Werner, T., Motyka, V., Laucou, V., Smets, R., Van Onckelen, H. and** 694
 633 **Schmülling, T.** (2003). Cytokinin-deficient transgenic Arabidopsis plants show 695
 634 multiple developmental alterations indicating opposite functions of cytokinins in 696
 635 the regulation of shoot and root meristem activity. *Plant Cell* **15**, 2532-2550. 697
 636 **Zúñiga-Mayo, V. M., Reyes-Olalde, J. I., Marsch-Martinez, N. and de Folter, S.** 698
 637 (2014). Cytokinin treatments affect the apical-basal patterning of the Arabidopsis 699
 638 gynoecium and resemble the effects of polar auxin transport inhibition. *Front.* 700
 639 *Plant Sci.* **5**, 191. 701

Funding details

S.No.	Funder name	Funder ID	Grant ID
1	Università degli Studi di Milano-Bicocca	http://dx.doi.org/10.13039/501100002954	MIUR-PRIN 2012
2	Ministero dell'Istruzione, dell'Università e della Ricerca	http://dx.doi.org/10.13039/501100003407	MIUR-PRIN 2012