

Erratum to: Blood or spores? A cautionary note on interpreting cellular debris on human skeletal remains

A. Cappella¹ · S. Stefanelli² · M. Caccianiga² · A. Rizzi⁴ · B. Bertoglio¹ · C. Sforza³ · C. Cattaneo¹

Published online: 17 March 2016
© Springer-Verlag Berlin Heidelberg 2016

Erratum to: Int J Legal Med (2015) 129:919–926
DOI 10.1007/s00414-014-1140-8

The original version of this article contained errors. Graph 1 and Figures 8 and 9 captions and their corresponding images did not match. The correct images are now given in this article.

The online version of the original article can be found at <http://dx.doi.org/10.1007/s00414-014-1140-8>.

✉ A. Cappella
annalisa.cappella@gmail.com

¹ LABANOF, Laboratorio di Antropologia e Odontologia Forense, Sezione di Medicina Legale e delle Assicurazioni, Dipartimento di Scienze Biomediche per la Salute, Università degli Studi di Milano, Via L. Mangiagalli 37, 20133 Milan, Italy

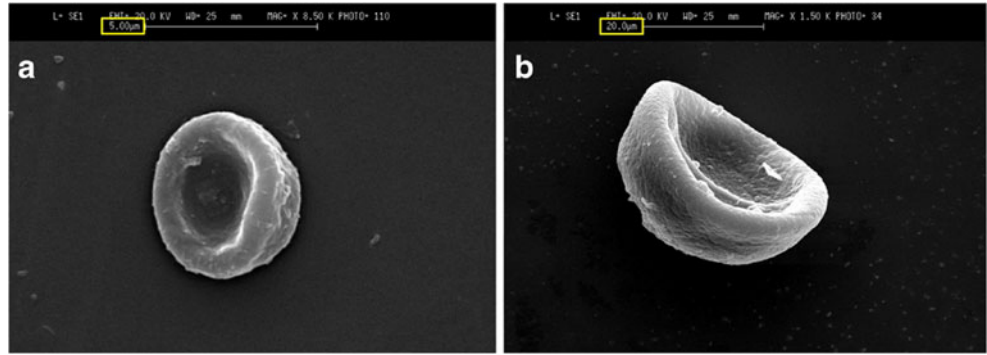
² Dipartimento di Bioscienze, Università degli Studi di Milano, Via Celoria 26, Milan, Italy

³ Dipartimento di Scienze Biomediche per la Salute, Università degli Studi di Milano, Via L. Mangiagalli 33, Milan, Italy

⁴ Dipartimento di Scienze della Terra, CNR (Centro Nazionale Ricerca), Università degli Studi di Milano, Via L. Mangiagalli 31, Milan, Italy

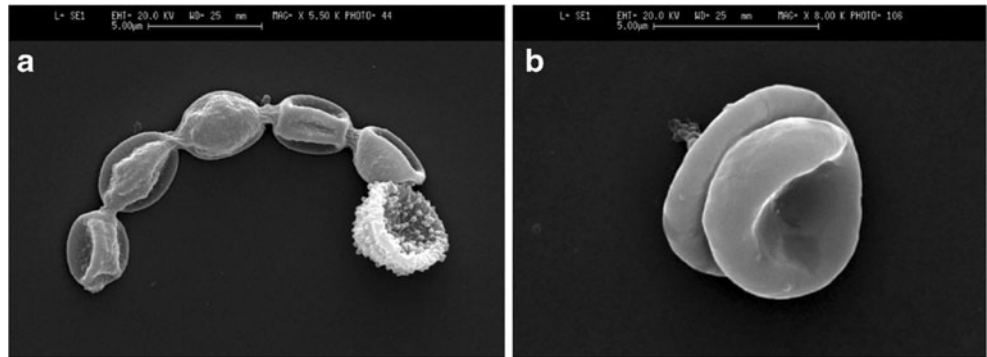
1. Upper figure on page 924

Fig. 8 One erythrocyte with the scale bar of 5.00 μm (a) and one spore of *Dryopteris filix-mas* with a 20.00-μm scale bar (b)

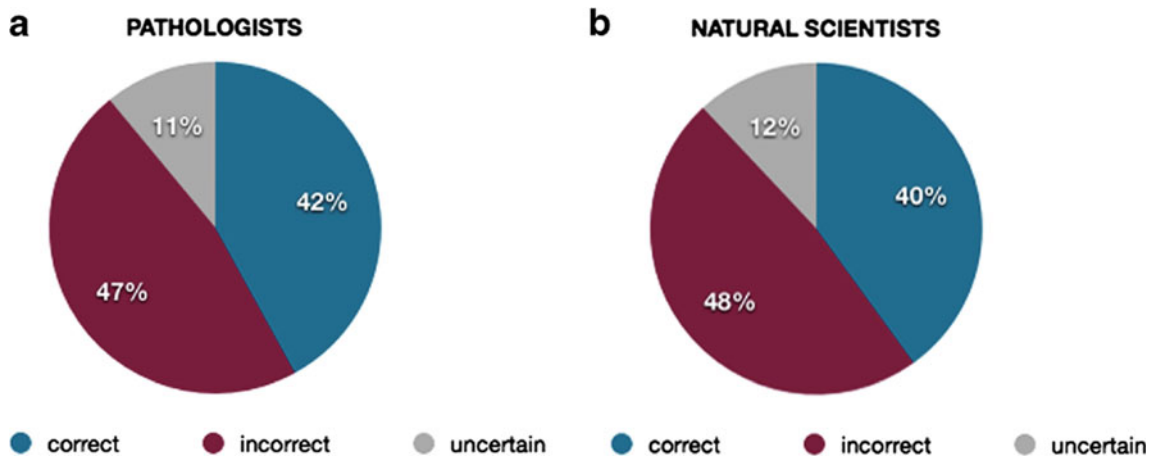


2. Bottom figure on page 924

Fig. 9 Chain setting for fungal spores (a) and rouleaux settings for erythrocytes (b)



3. Graph on page 925



Graph 1 Percentages of answers for pathologists (a) and natural scientists (b)