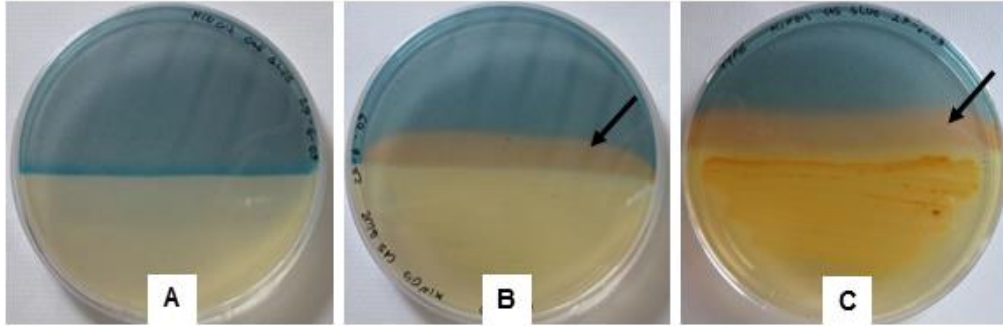


1 **Supplementary information 1.** Iron-chelating activity of *Luteibacter* sp. MIMR1 and
2 *Pseudomonas chlororaphis* subsp. *aurantiaca* DSM 19603^T in chrome azurol agar plates
3 containing 1 mM FeCl₃. Arrows indicate the orange mark demonstrating the production of
4 siderophores by the bacteria under study. A: control; B: strain MIMR1; C: strain DSM 19603^T.



5
6
7 **Supplementary information 2.** Barley plants after one week of growth in Roux bottles
8 containing agarized Fahreus medium in presence of 10⁹ cells of *Luteibacter rhizovicianus* MIMR1
9 (B) and *Pseudomonas chlororaphis* subsp. *aurantiaca* DSM19603^T (C) or without bacteria
10 (control, A).



Control



*Luteibacter
rhizovicianus*
MIMR1



*Pseudomonas
chlororaphis*
DSM 19603^T

11