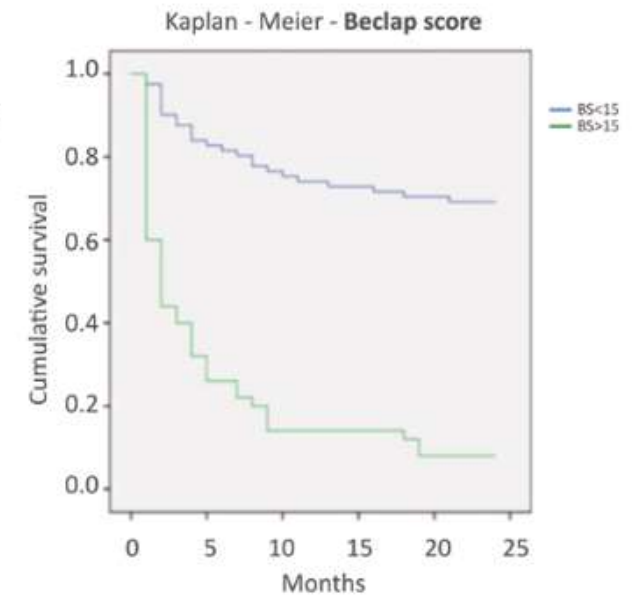
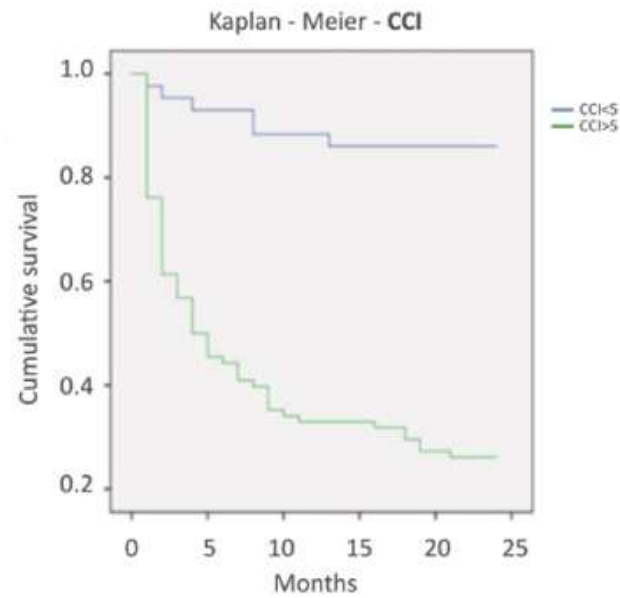
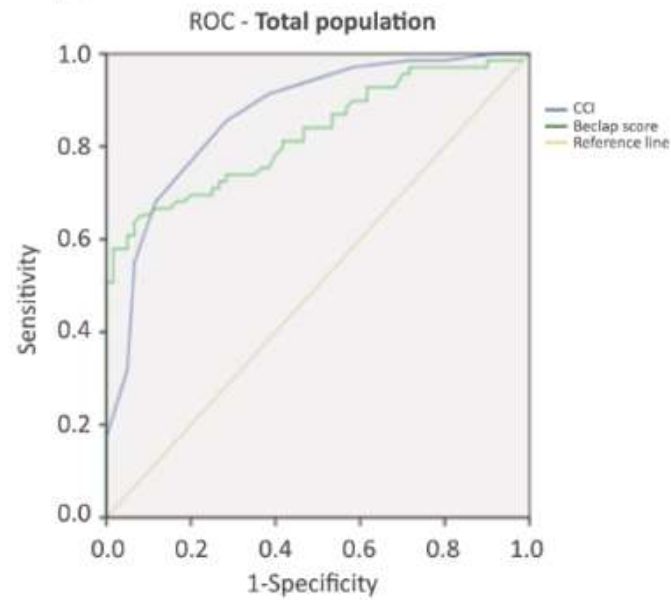
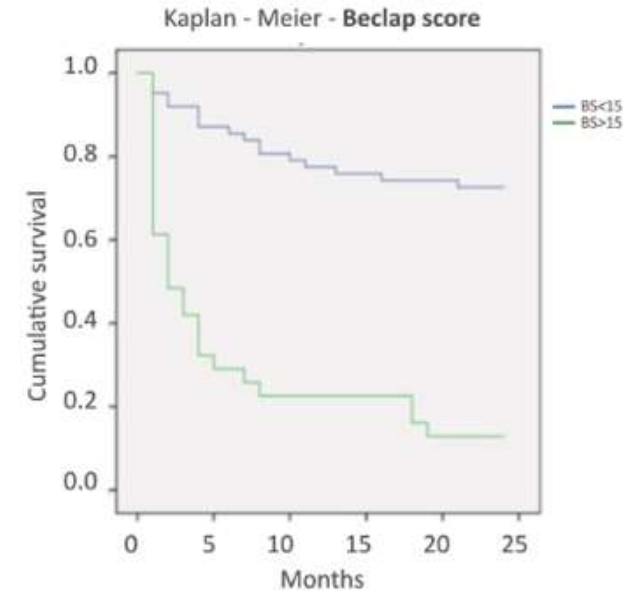
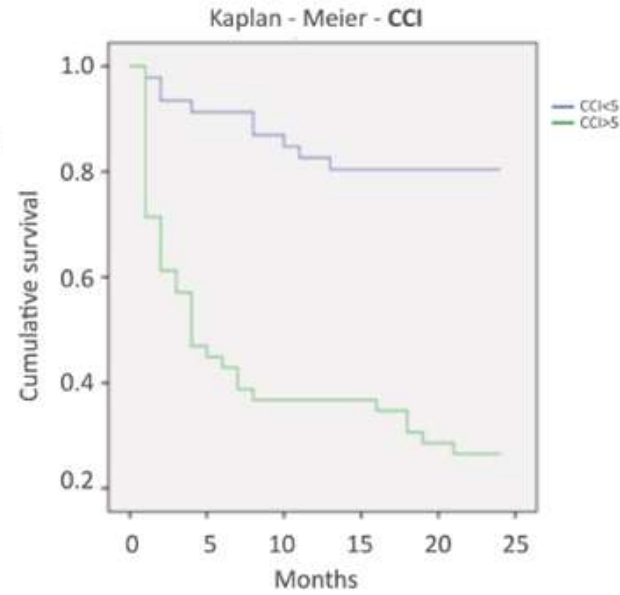
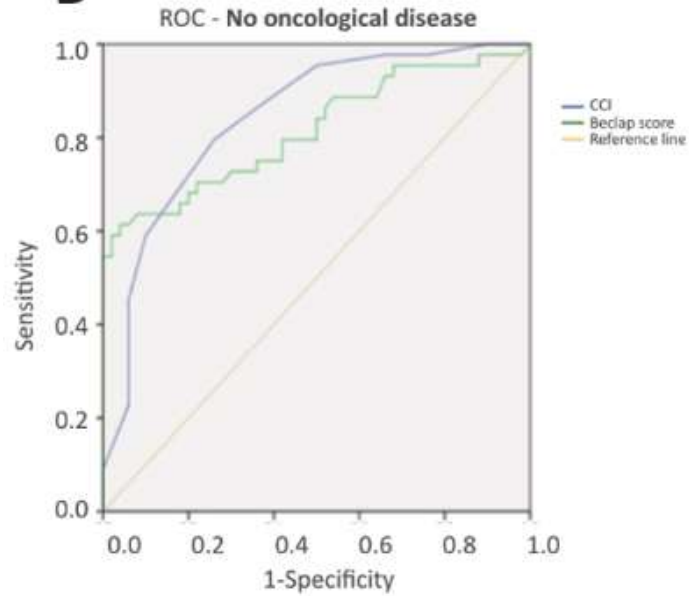


**A**

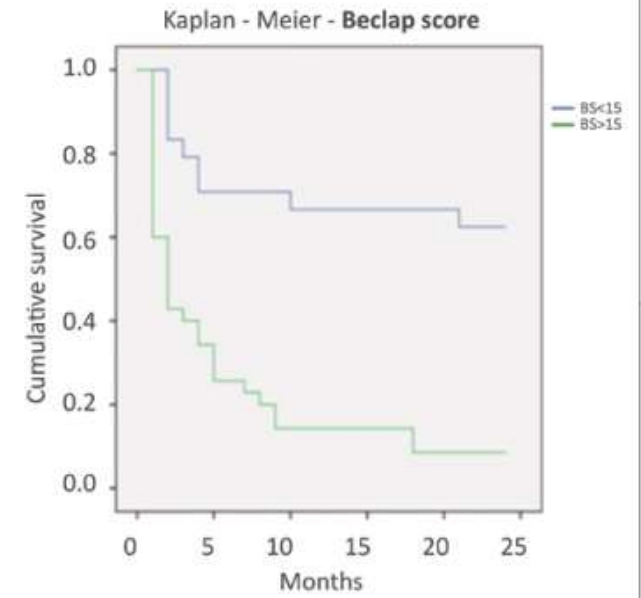
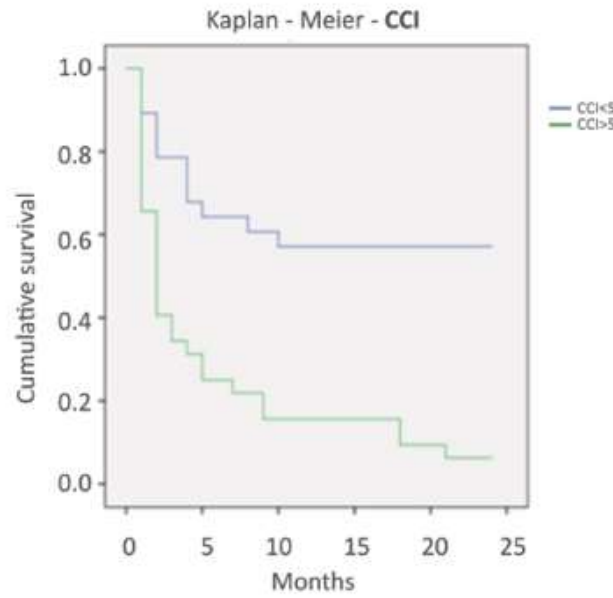
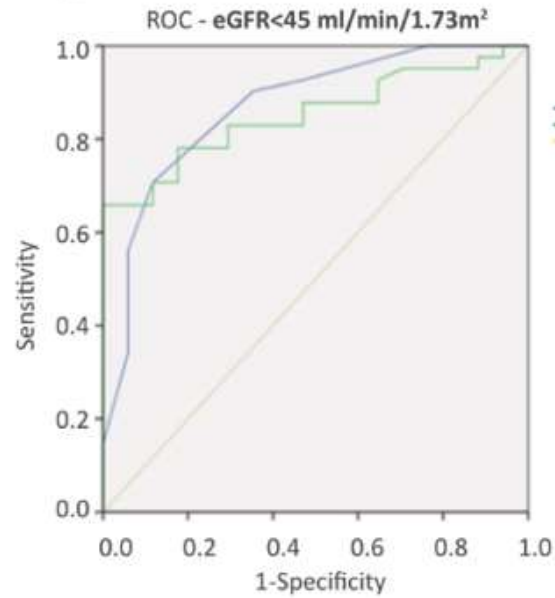


		Area	Standard error	Asymptotic confidence range 95%		Positive if greater than or equal to	Sensitivity	Specificity	Odds ratio	p
				Lower limit	Upper limit					
Total population	<b>CCI</b>	0,867	0,032	0,804	0,929	5,5	0,855	0,717	17.4275 (6.5081 to 46.6676)	< 0.0001
	<b>Beclap score</b>	0,826	0,036	0,756	0,897	15,4	0,652	0,917	42.9333 (13.3267 to 138.3143)	< 0.0001

**B**

		Area	Standard error	Asymptotic confidence range 95%		Positive if greater than or equal to	Sensitivity	Specificity	Odds ratio	p
				Lower limit	Upper limit					
No oncological disease	<b>CCI</b>	0,842	0,041	0,762	0,922	5,5	0,795	0,74	11.3846 (4.3336 to 29.9080)	< 0.0001
	<b>Beclap score</b>	0,815	0,046	0,725	0,905	15,4	0,636	0,92	17.8676 (5.4405 to 58.6813)	< 0.0001

**C**



		Area	Standard error	Asymptotic confidence range 95%		Positive if greater than or equal to	Sensitivity	Specificity	Odds ratio	p
				Lower limit	Upper limit					
eGFR < 45 ml/min/1.73m <sup>2</sup>	<b>CCI</b>	0,867	0,053	0,763	0,972	6,5	0,707	0,882	20.0000 (3.9768 to 100.5846)	0.0003
	<b>Beclap score</b>	0,852	0,049	0,756	0,947	14,8	0,78	0,824	17.7778 (4.1976 to 75.2936)	0.0001