



Assessing the coastal hazard of Mediane Ianos through ensemble modelling

Christian Ferrarin¹, Florian Pantillon², Silvio Davolio³, Marco Bajo¹, Mario Marcello Miglietta⁴, Elenio Avolio⁵, Diego S. Carrió⁶, Ioannis Pytharoulis⁷, Claudio Sanchez⁸, Platon Patlakas⁹, Juan Jesús González-Alemán¹⁰, and Emmanouil Flaounas¹¹

¹CNR - National Research Council of Italy, ISMAR - Institute of Marine Sciences, Venice, Italy

²Laboratoire d'Aérodynamique, Université de Toulouse, CNRS, UPS, IRD, Toulouse, France

³CNR - National Research Council of Italy, ISAC - Institute of Atmospheric Sciences and Climate, Bologna, Italy

⁴CNR - National Research Council of Italy, ISAC - Institute of Atmospheric Sciences and Climate, Padua, Italy

⁵CNR - National Research Council of Italy, ISAC - Institute of Atmospheric Sciences and Climate, Lamezia Terme, Italy

⁶Department of Physics, Universitat de les Illes Balears, Palma, Spain

⁷Department of Meteorology and Climatology, School of Geology, Aristotle University of Thessaloniki, Thessaloniki, Greece

⁸Met Office, Exeter, UK

⁹Department of Physics, National and Kapodistrian University of Athens, Athens, Greece

¹⁰Spanish State Meteorological Agency, Madrid, Spain

¹¹Institute of Oceanography, Hellenic Centre for Marine Research, Athens, Greece

Correspondence: Christian Ferrarin (c.ferrarin@ismar.cnr.it)

Received: 26 September 2022 – Discussion started: 11 January 2023

Revised: 27 April 2023 – Accepted: 21 May 2023 – Published: 22 June 2023

Abstract. On 18 September 2020, Mediane Ianos hit the western coast of Greece, resulting in flooding and severe damage at several coastal locations. In this work, we aim at evaluating its impact on sea conditions and the associated uncertainty through the use of an ensemble of numerical simulations. We applied a coupled wave–current model to an unstructured mesh, representing the whole Mediterranean Sea, with a grid resolution increasing in the Ionian Sea along the cyclone path and the landfall area. To investigate the uncertainty in modelling sea levels and waves for such an intense event, we performed an ensemble of ocean simulations using several coarse (10 km) and high-resolution (2 km) meteorological forcings from different mesoscale models. The performance of the ocean and wave models was evaluated against observations retrieved from fixed monitoring stations and satellites. All model runs emphasized the occurrence of severe sea conditions along the cyclone path and at the coast. Due to the rugged and complex coastline, extreme sea levels are localized at specific coastal sites. However, numerical results show a large spread of the simulated sea conditions for both the sea level and waves, highlighting the

large uncertainty in simulating this kind of extreme event. The multi-model and multi-physics approach allows us to assess how the uncertainty propagates from meteorological to ocean variables and the subsequent coastal impact. The ensemble mean and standard deviation were combined to prove the hazard scenarios of the potential impact of such an extreme event to be used in a flood risk management plan.

1 Introduction

Destructive sea storms driven by intense cyclones represent one of the main threats to the Mediterranean coastal communities, causing flooding, beach erosion, and damage to infrastructures and cultural heritages (Lionello et al., 2019; Flaounas et al., 2022). Most of these cyclones are synoptic-scale events and may produce severe sea conditions and large sea-level anomalies along the coast of the Mediterranean Sea (Lionello et al., 2006, 2019). The Mediterranean Basin occasionally also hosts intense mesoscale vortices that evolve into tropical-like cyclones called “medicanes” (an abbrevi-

ation of Mediterranean hurricanes; Emanuel, 2005; Miglietta, 2019). Although they are more intense over the sea and quickly dissipate over land, their landfall may be associated with destructive extreme events, such as heavy precipitation, windstorms, flooding and marine storminess (Patlakas et al., 2021; Flaounas et al., 2022). The associated strong winds, high waves and storm surges can directly affect coastal infrastructure and ships en route (Sánchez-Arcilla et al., 2016). Indeed, several ship accidents caused by rough waves during intense cyclones have been reported in the Mediterranean Sea (Bertotti and Cavaleri, 2008; Cavaleri et al., 2012).

The accurate numerical modelling of intense weather extreme events in the Mediterranean Sea still represents a challenge. Research from the past decade has focused on extreme precipitation events in the region and has showed that high grid resolution, of the order of a few kilometres, is required to describe small-scale processes such as intense convective activity or the interaction with the local orography, while the representation of air–sea exchanges is crucial (e.g. Ducrocq et al., 2014). In contrast, there is no wide consensus concerning modelling requirements for intense Mediterranean cyclones, including medicanes, where both large-scale dry dynamics and small-scale moist processes play a key role (Miglietta, 2019; Flaounas et al., 2021).

The awareness of the prediction uncertainties and errors for these intense weather events has led many operational and research forecasting systems around the world to move toward numerical forecasts based on a probabilistic concept: the ensemble technique (Leutbecher and Palmer, 2008; Cloke and Pappenberger, 2009; Slingo and Palmer, 2011). The most common ensemble technique approaches used operationally are based on generating perturbed initial conditions by (a) using different parameterization schemes with the same model (multi-physics ensemble approach; Jankov et al., 2017) or (b) using a set of different numerical models (multi-model ensemble approach; Rozante et al., 2014). An ensemble approach is particularly useful in coastal risk forecasting systems, since it not only provides a quantitative measure of the uncertainty associated with predictions, which can be particularly large for extreme storms, but also may allow estimating the probabilities of different outcomes (e.g. flooding threshold; Zou et al., 2013; Ferrarin et al., 2020). Moreover, coastal flooding and damage risks of these intense cyclones are strongly associated with the geomorphological characteristics of the considered coastal segment, especially along complex coastlines with many islands and headlands (Bosom and Jiménez, 2011; De Leo et al., 2019). The simulation of such extreme sea conditions at the coast requires numerical models with sufficiently refined horizontal grids to represent complex morphological and bathymetric features, as well as several anthropogenic constructions (e.g. piers, harbours, breakwaters, jetties) present along the coast. From this point of view, using unstructured grids allows high-grid-resolution simulations in coastal areas, thus resolving processes at different spatial scales and maintaining computa-

tional efficiency compared to regular grids (Umgiesser et al., 2022).

One of the most destructive tropical-like cyclones, named Ianos, occurred in the central Mediterranean Basin in September 2020, causing heavy rains, damaging winds and storm surge, particularly in southern Italy and Greece (Zekkos et al., 2020; Lagouvardos et al., 2022; Zimbo et al., 2022). This event was selected as the first testbed within the research activities promoted within the international COST Action CA19109 MedCyclones (<https://medcyclones.eu/>, last access: 14 June 2023).

The main aim of this work is to investigate how the model uncertainty associated with the reproduction of such a severe event propagates from the atmosphere to the marine coastal areas. We used an ensemble of coupled ocean–wave simulations forced by atmospheric fields from a suite of numerical weather models. The ensemble approach allows the assessment of the potential coastal hazard associated with a medicanne, identifying the coastal areas most impacted by severe waves and storm surges. The developed methodology can be directly implemented in an early warning procedure by providing an estimation of the peak sea storm conditions to be used in coastal risk management.

This study is structured as follows. Section 2 presents the modelling framework, Sect. 3 gives the results of atmospheric and ocean models, Sect. 4 discusses potential coastal hazards, and Sect. 5 concludes the paper.

2 The modelling framework

2.1 Meteorological modelling

In this study, we used an ensemble of meteorological models as a forcing condition for the ocean simulations. To reproduce the meteorological characteristics of Mediane Ianos, we performed a dynamic downscaling of the operational deterministic analysis of the European Centre for Medium-Range Weather Forecasts global Integrated Forecasting System (ECMWF IFS). Two different horizontal grid resolutions, 10 km (about 0.1°) and 2 km (about 0.02°), over a domain covering the central Mediterranean region (the black box indicated in Fig. 1a), were used. The deterministic ECMWF IFS atmospheric model (cycle 47r1) has approximately 9 km horizontal resolution and 137 vertical levels, of which 20 are below 1000 m (see the full documentation available at <https://www.ecmwf.int/en/forecasts/about-our-forecasts/evolution-ifs/cycles/summary-cycle-47r1>, last access: 14 February 2023). The operational analyses are based on the incremental form of the 4-dimensional variational data assimilation scheme (4D-Var; Rabier et al., 2000) and are available at 6 h intervals (i.e. at 00:00, 06:00, 12:00 and 18:00 UTC).

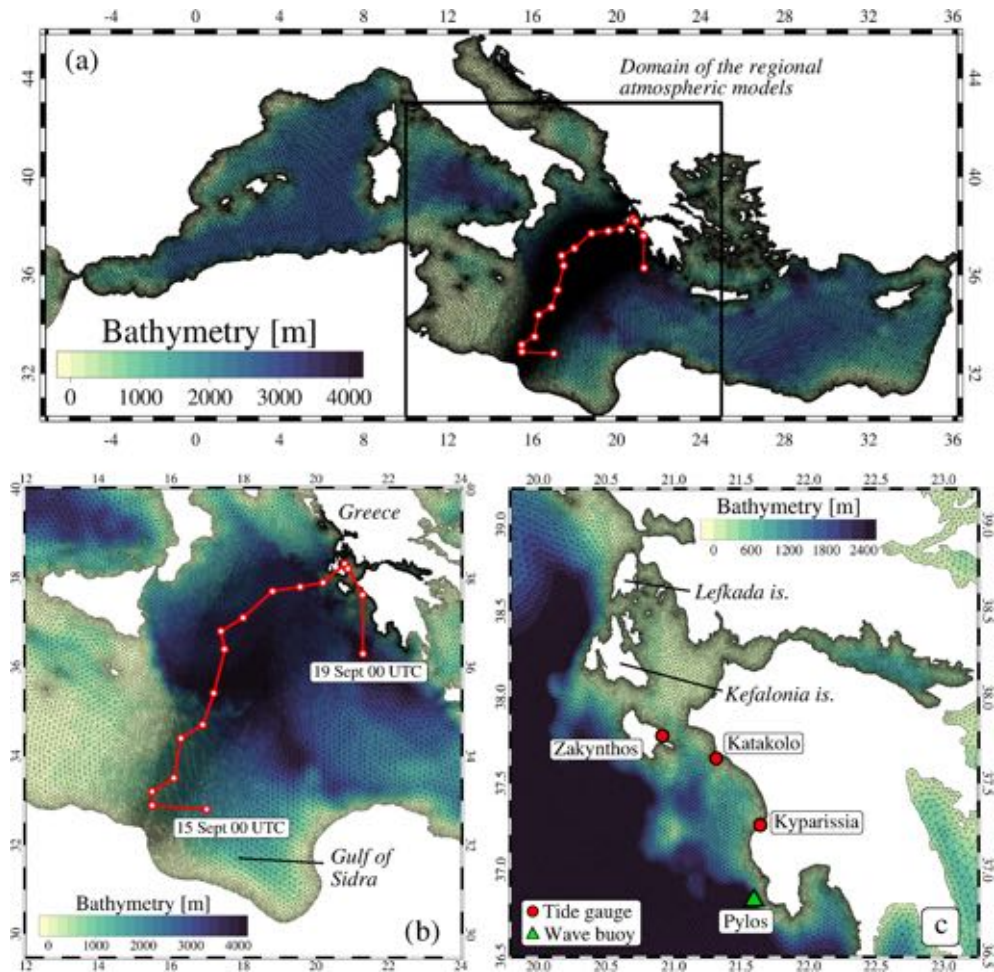


Figure 1. Bathymetry of the Mediterranean Sea with the unstructured grid superimposed: (a) whole model domain, (b) zoomed-in image over the Ionian Sea and (c) zoomed-in image over the western Greek coast. The red point line in panels (a) and (b) indicates the cyclone's track as defined by the 6 h ECMWF IFS analysis from 15 September 2020 00:00 UTC to 19 September 2020 00:00 UTC. The red dots and the green triangle in panel (c) mark the location of the sea-level and wave monitoring stations, respectively.

According to several authors, operational forecasts benefit from the combination of different models by considering different physical parameterizations, numerical schemes, model resolutions and forcings (Di Liberto et al., 2011; Rozante et al., 2014). Moreover, a variety of independent models is suitable to explore the uncertainty associated with model errors (Bowler et al., 2008). In this study, dynamical downscaling is supplied by an ensemble of regional models implemented by different research centres and made available within the research initiative fostered by the MedCyclones COST Action (Table 1). They include some of the most widespread atmospheric mesoscale models used in academic and operational applications. The models have been applied at the horizontal grid spacing of 10 and 2 km, which are approximately the most common resolutions adopted in operational centres for numerical prediction over large domains and over regional areas, employing, respectively, parameterized or explicitly resolved convection. The reader is referred to the re-

ferences listed in Table 1 for a more detailed description of the atmospheric models.

The regional models have different characteristics, parameterizations and implementations, but they share a common setup considering the following constraints:

- 5 d run covering the period from 15 (00:00 UTC) to 20 (00:00 UTC) September 2020;
- initial and boundary conditions from ECMWF IFS operational analysis;
- computational domain extending from approximately 28–43° N to 10–25° E;
- two horizontal grid spacing, 10 km (similar to the ECMWF IFS) and 2 km;
- deep convection parameterized with 10 km and explicit with 2 km.

Table 1. List of the meteorological models implemented in this study.

Meteorological model	Provider	Details	Reference
BOLAM ^a	CNR-ISAC (Italy)	Hydrostatic 60 vert. levels	Davolio et al. (2020)
MESO-NH	LAERO (France)	Non-hydrostatic 70 vert. levels	Lac et al. (2018)
Met Office Unified Model (MetUM)	UK Met Office	Non-hydrostatic 90 (70) vert. levels for 2 km (10 km)	Bush et al. (2020) for 2 km Walters et al. (2017) for 10 km
HARMONIE-AROME ^b	AEMET (Spain)	Non-hydrostatic 65 vert. levels	Bengtsson et al. (2017)
WRF (five variants)	CNR-ISAC1 (Italy)	Vers. 4.3 50 vert. levels	Miglietta et al. (2021)
	CNR-ISAC2 (Italy)	Vers. 4.3 50 vert. levels	Avolio and Miglietta (2022)
	AUTH (Greece)	Vers. 4.2.1 50 vert. levels	Carrió et al. (2019)
	UIB (Spain)	Vers. 3.9.1 51 vert. levels	Pytharoulis et al. (2018)
	UOA (Greece)	Vers. 4.1.3 55 vert. levels	https://forecast.uoa.gr (last access: 14 February 2023)

^a Applied only at the 10 km resolution. ^b Applied only at the 2 km resolution.

The objective of this study is not to mimic an operational forecasting system but to analyse the level of uncertainty due to the meteorological mesoscale models, associated with this extreme event that is strongly sustained, especially in the initial phase, by deep convection. The common setup of the atmospheric models minimizes the error in large-scale dynamics due to the boundary conditions (using the same analysis fields). Due to the common integration domain, the different results are mainly ascribable to the characteristic of the models. Moreover, to allow a fair comparison of the results at 10 and 2 km grid spacing, the domain and initial/boundary conditions are also the same for all simulations.

2.2 Coupled hydrodynamic–wave model

The sea-level and wave patterns during Medicane Ianos were simulated using the finite element SHYFEM hydrodynamic model (<https://github.com/SHYFEM-model/shyfem>, last access: 14 February 2023; Umgiesser et al., 2014) coupled with the unstructured spectral wave model WWMIII (Roland et al., 2009). The considered interactions between waves and surge were (1) the contribution of waves to the total sea levels through the wave setup and wave set-down; (2) the influence of tides and storm surge on wave propagation, affecting the refraction, shoaling, and breaking processes; and (3) the effect of sea-level variation and currents on the propagation, generation, and decay of the wind waves. The cou-

pled model has already been applied to simulate hydrodynamics and waves in the Mediterranean Sea (Ferrarin et al., 2013) and in the Adriatic Sea during extreme meteo-marine events (Roland et al., 2009; Cavaleri et al., 2019; Ferrarin et al., 2021).

Both the hydrodynamic and wave models run on the same computational domain that covers the whole Mediterranean Sea through an unstructured grid consisting of approximately 200 000 triangular elements (Fig. 1a). The use of elements of variable sizes is fully exploited to create a seamless transition between the open sea and the coastal waters following the medicane path. The ocean models solve the combined large-scale oceanic and small-scale coastal dynamics in the same discrete domain by subdivision of the basin into triangles varying in form and size. Mesh resolution varies from 12 km in the open sea to a couple of kilometres along the cyclone path (Fig. 1b) and up to a few hundred metres along the western coast of Greece, where the cyclone landed (Fig. 1c). Model bathymetry over the Mediterranean Sea is obtained by a bilinear interpolation on the model grid of the European Marine Observation and Data Network (EMODnet) 2020 dataset (EMODnet Bathymetry Consortium, 2020).

The numerical experiments were forced by 10 m winds and mean sea-level pressure (MSLP) provided by the ensemble of meteorological models described in Sect. 2.1. ECMWF IFS 6 h analyses were used to cover the wave-

current model grid outside the atmosphere domain. Also, meteorological forcings from the ECMWF IFS operational analysis over the whole current–wave model domain are considered for benchmarking. All numerical experiments cover the period from 10 to 20 September 2020 with a spin-up period of 5 d (from 10 to 15 September 2020) for which we used ECMWF IFS 6 h analysis as forcing. Since we are interested in examining only the meteorological contribution of the cyclone, we imposed no sea-level Atlantic Ocean boundary conditions at the Gibraltar Strait. The 2D barotropic hydrodynamic model simulates the sea level induced by the storm surge (driven by MSLP and wind) and waves, without considering tidal and baroclinic dynamics.

3 Results for Medicane Ianos

3.1 General meteorological conditions

Medicane Ianos formed in the central Mediterranean Sea over the warm waters of the Gulf of Sidra on 15 September 2020, developing from the interaction between an upper tropospheric precursor and a cluster of convective storms. Then the cyclone moved northward, progressively deepening over the Ionian Sea. On 17 September 2020, Ianos evolved into a powerful medicane, and on 18 September, it made landfall on the western coast of Greece (near the Lefkada, Kefalonia and Zakynthos islands), accompanied by high coastal waves and storm surges, determining coastal damages and flooding (Zekkos et al., 2020; Lagouvardos et al., 2022; Zimbo et al., 2022). The cyclone's path, as defined by the 6 h ECMWF IFS analysis, is indicated with a red point line in Fig. 1.

Since this study aims at evaluating the sea conditions driven by Medicane Ianos, we focused the meteorological analysis only on the mean sea-level pressure and wind over the sea, leaving out the physical processes behind the genesis and evolution of the medicane, as well as its effects overland (e.g. rainfall and damaging winds). Surface winds derived from the Advanced SCATterometer (ASCAT) on board Metop satellites provided by the Royal Netherlands Meteorological Institute present an overview of the cyclone structure over the Ionian Sea (Fig. 2). On 16 September, the cyclone was located over the south-western Ionian Sea with winds above 20 m s^{-1} surrounding the centre. On 17 September, the cyclone intensified, and in the evening it approached the western Greek coast, thus travelling over a distance of about 300 km in 23 h at an average speed of 3.6 m s^{-1} . At this stage, southerly winds up to 25 m s^{-1} hit the Zakynthos and Kefalonia islands. Ianos then remained over the Ionian islands during the night between 17 and 18 September, maintaining high wind intensity.

The results of the different atmosphere models are presented in Fig. 3 in terms of the cyclone's path and along-path minimum pressure. Generally, the 2 km models produced tracks closer to analysis and a deeper cyclone with

respect to the 10 km ones. While the location of landfall over Greece is shifted southeastward by all models compared to the analysis, both error and spread in tracks are about twice larger in 10 km than in 2 km simulations. Furthermore, a large spread is found in the simulated cyclone intensity and is also larger in 10 km than in 2 km simulations. The high-resolution runs systematically overestimate the maximum intensity compared to the IFS analysis, although the latter underestimates the actual cyclone intensity (MSLP values of 984.3 and 989.1 hPa were recorded in the landfall region; Lagouvardos et al., 2022). These results stress the high sensitivity of Medicane Ianos to the resolved physical processes as also pointed out by Comellas Prat et al. (2021). Such uncertainty in the resolved track and intensity of the cyclone leads naturally to diverse estimations of ocean impacts, which are assessed in the following sections.

3.2 Open sea conditions

Clearly, the strong surface winds swirling around the cyclone centre produced a severe sea state with high waves. Indeed, the wave model forced by ECMWF IFS analysis simulated significant wave heights (SWHs) with values up to 5 m in the Ionian Sea (Fig. 4) and patterns replicating the surface wind fields detected by the scatterometers (see Fig. 2). It is worth noting that waves generated by Medicane Ianos propagated over the whole Ionian Sea, determining maximum SWH values higher than 1.5 m along the southern Italian, the northern African and the western Greek coasts.

Satellite-based SWH observations confirmed the simulated values in the Ionian Sea. We considered SWH data acquired by altimeters (Jason-3, Sentinel-3A, Sentinel-3B, CryoSat-2, SARAL/AltiKa, CFOSAT and Hai Yang 2B) passing over the central Mediterranean Sea from 16 to 18 September 2020 (Fig. 5a) and retrieved from the E.U. Copernicus Marine Service (E.U. Copernicus Marine Service Information, 2022b). Along-track (at a spatial resolution of 7 km) satellite SWH observations were used to assess the capacity of the wave model in reproducing the sea state when the medicane was moving from the central Ionian Sea to the Greek coast. In this study, we consider normalized standard deviation, centred RMSE (root mean square error of the simulated values with respect to the observations after subtracting the respective mean fields), bias (difference between the mean of simulation results and observations) and R (correlation coefficient between model results and observations) as the metrics for measuring the model performance.

The statistical values shown in the Taylor diagram (Taylor, 2001, Fig. 5b) and summarized in Table 2 indicate that the wave simulations forced with the 10 km meteorological fields have a slightly lower RMSE with respect to the ones that use the 2 km forcings (on average 1.0 m for 10 km and 1.1 m for 2 km). On the contrary, R is higher for the 2 km simulations (on average 0.84 for 2 km and 0.74 for 10 km). Generally, both the 10 and 2 km sets of simulations have a standard de-

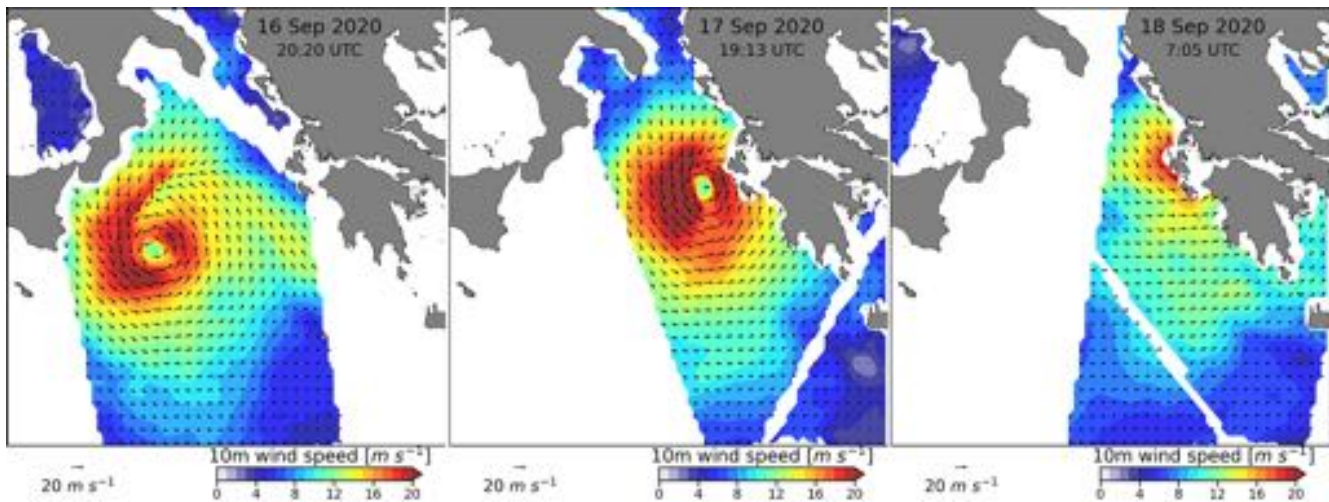


Figure 2. Scatterometer surface wind intensity (colour shaded) and direction (black arrows) fields on 16, 17 and 18 September 2020.

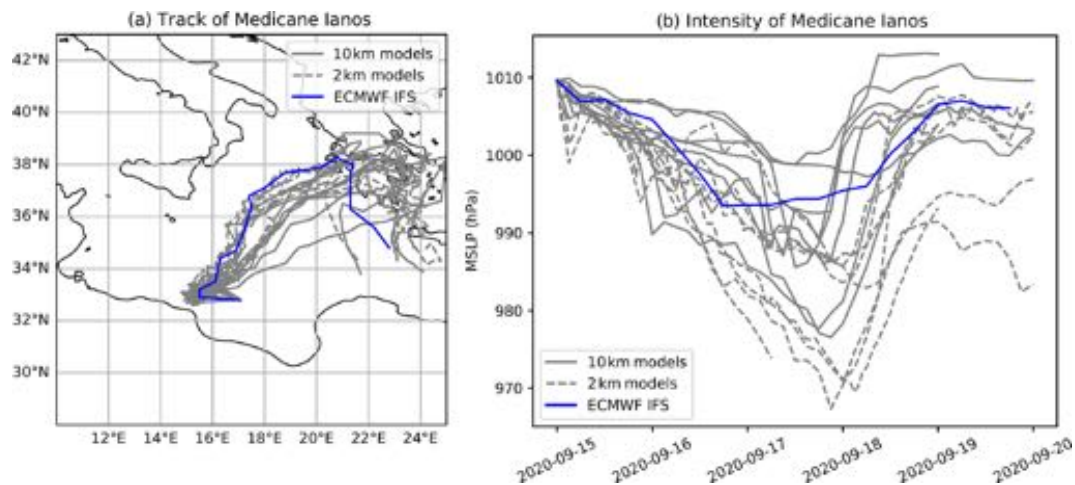


Figure 3. (a) Track (computed from the position of the minimum mean sea-level pressure) and (b) intensity (in terms of mean sea-level pressure) of Mediane Ianos as simulated by the different meteorological models.

viation larger than observed, and the 2 km numerical experiments tend to overestimate the measured SWH (the average bias for the 2 km runs amounts to 0.6 m). It is worth noting that none of the 10 and 2 km forcing simulations performs better than the one driven with the 6 h ECMWF IFS analysis, which has an RMSE of 0.4 m and R equal to 0.92. This emphasizes the challenge of accurately simulating the medicane evolution several days ahead, even on a limited area forced by the analysis at its lateral boundaries.

The simulated sea levels forced by ECMWF IFS analysis show a circular pattern on 16 and 17 September following the medicane path with peak values in the centre of the cyclone of about 20 cm (Fig. 6). Such a distribution is mostly induced by the contribution associated with the sea-level isostatic adjustment to the air pressure variations (the so-called inverse barometric effect, which amounts to 1 cm of sea level

per 1 hPa of air pressure). Wind and waves raised the sea levels along the northern African coast with values up to 10 cm. Between 17 and 18 September, the cyclone hit the western Greek coast, raising by more than 15 cm the sea levels near the Lefkada, Zakynthos and Kefalonia islands.

The 1 Hz (7 km) interval along-track sea surface heights recorded by altimeter Sentinel-3B (passage of 17 September 2020 20:00 UTC; magenta line in Fig. 6b) and Sentinel-3A (passage of 18 September 2020 09:00 UTC; green line in Fig. 6c), retrieved from the E.U. Copernicus Marine Service (E.U. Copernicus Marine Service Information, 2022a), were used for visual model comparison. We considered the filtered sea-level anomaly (SLA) data uncorrected from the dynamic atmospheric component (i.e. $SLA_{unc} = SLA + DAC$). It is important to stress that altimeters register the total sea surface height that is the result of different phenomena, includ-

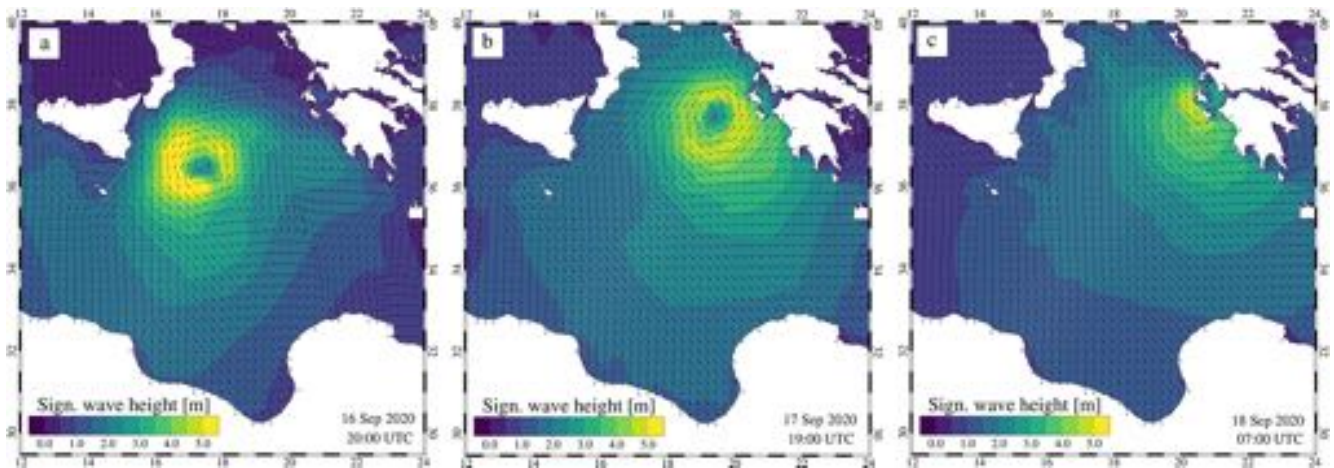


Figure 4. Significant wave height (colour shaded) and mean wave direction (black arrows) fields on 16, 17 and 18 September 2020 as simulated by the wave model forced with ECMWF IFS analysis.

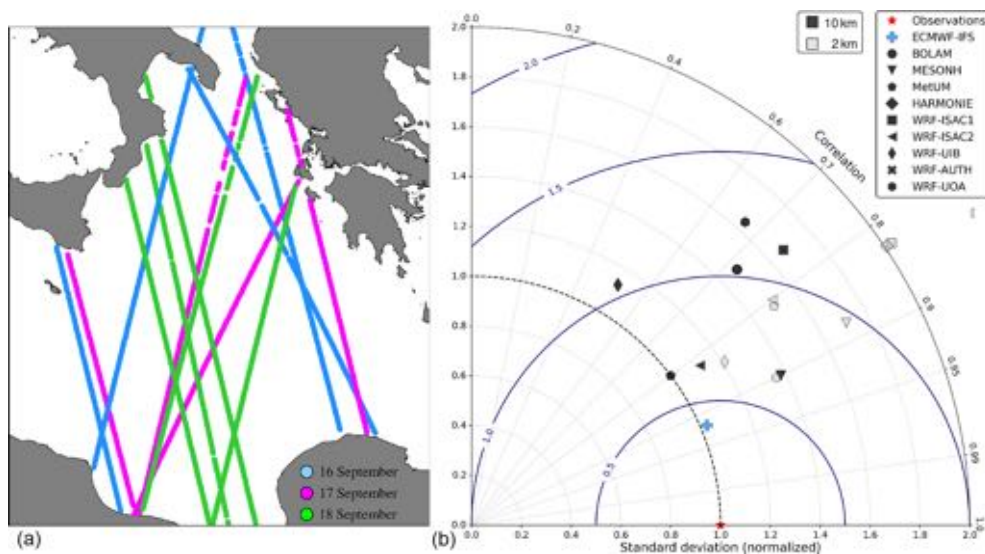


Figure 5. (a) Tracks of satellites used for the open sea wave comparison. (b) Taylor diagram displaying a statistical comparison with satellite observations of simulated significant wave heights (filled and empty markers indicate 10 and 2 km forcing, respectively). Some data points may lie outside the Taylor diagram.

ing also the baroclinic dynamics, which are not accounted for in the storm surge model (Cavaleri et al., 2021). However, as shown by Scicchitano et al. (2021), the storm surge induced by the inverse barometric effect and wind stress associated with a medicane represents the largest contribution to the temporary rise of the sea level during such events. Indeed, barotropic models have been widely used for simulating the sea-level impact of different sea storms (Bajo et al., 2023, and references therein). Figure 7 shows that the along-track observations have higher spatial variability with respect to the model results. However, the rise in sea level towards the Ionian islands (of the order of 20 cm on 17 September and 10 cm on 18 September) is captured by both the storm surge

model and the altimeters. As for the waves, the model results display a large scatter of the simulated sea levels.

3.3 Sea conditions at the coast

While approaching the coast, the strong winds associated with Medicane Ianos raised the sea levels near the Ionian islands with the consequent flooding of several coastal locations (Zekkos et al., 2020). The sea-level data acquired at the tide gauges of Zakynthos, Katakolo and Kyparissia (indicated with red dots in Fig. 1) and provided by the UNESCO/IOC sea-level station monitoring service (<http://www.ioc-sealevelmonitoring.org/>, last access: 14 February 2023) were processed with the Python UTIDE tidal harmonic anal-

Table 2. Statistical analysis (in terms of centred RMSE, bias and R) of simulated significant wave height in the open sea for different meteorological forcing. Statistics are reported for both the 10 and 2 km meteorological forcing.

Meteorological forcing	Centred RMSE (m)	BIAS (m)	R
	10 and 2 km	10 and 2 km	10 and 2 km
ECMWF IFS an.	0.41	0.27	0.92
BOLAM	0.91	−0.17	0.72
MESO-NH	0.69 and 1.03	0.34 and 0.66	0.90 and 0.88
MetUM	0.67 and 0.91	−0.38 and 0.44	0.80 and 0.81
HARMONIE-AROME	1.56	1.07	0.83
WRF-ISAC1	1.00 and 1.29	0.21 and 0.52	0.75 and 0.83
WRF-ISAC2	0.66 and 0.94	0.05 and 0.40	0.82 and 0.80
WRF-AUTH	1.20 and 0.59	−0.62 and −0.15	0.52 and 0.84
WRF-UIB	1.96 and 2.23	1.21 and 1.71	0.75 and 0.85
WRF-UOA	1.09 and 0.57	0.15 and 0.23	0.67 and 0.90

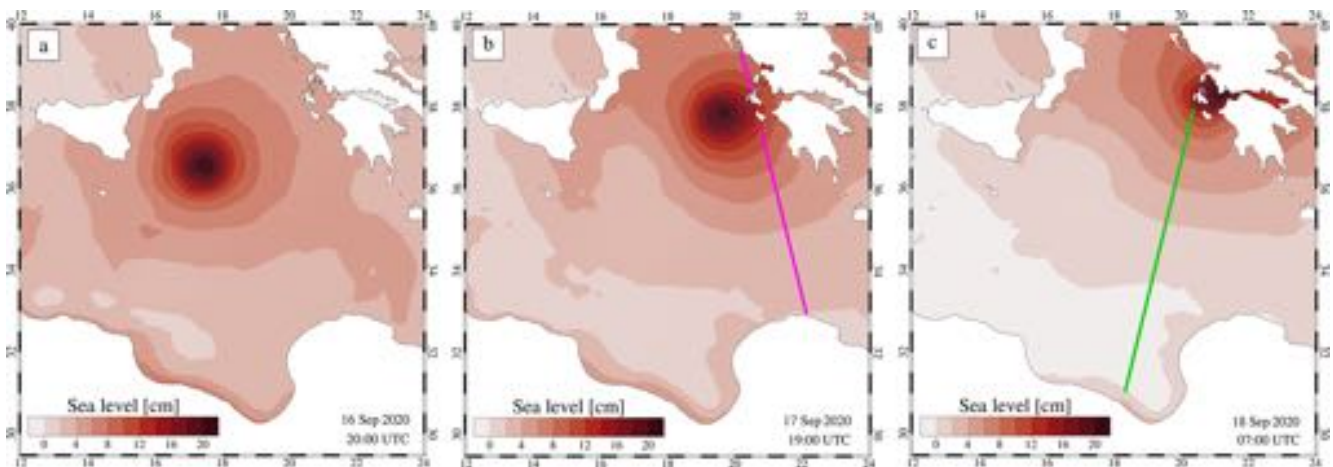


Figure 6. Sea-level fields on 16, 17 and 18 September 2020 as simulated by the hydrodynamic model forced with ECMWF IFS wind and MSLP. The magenta and green lines indicate the altimeter tracks used for the model comparison presented in Fig. 7.

ysis tool based on the least-squares fitting (Codiga, 2011) to separate the tidal and the atmospheric (storm surge) contributions to the total sea level. Observations clearly indicate a significant storm surge contribution associated with the mediane on 17 and 18 September with peak values of 0.19, 0.27 and 0.16 m at Zakynthos, Katakolo and Kyparissia, respectively (Fig. 8a, b and c). The only available wave monitoring station in the area of interest is the buoy of Pylos (provided by the POSEIDON monitoring, forecasting and information system for the Greek seas; <https://poseidon.hcmr.gr/>, last access: 14 February 2023), which recorded a maximum significant wave height of 4.7 m on 18 September at 03:00 UTC but probably missed the storm's peak (Fig. 8d).

The analysis of the numerical results highlights that even if the simulation forced by ECMWF IFS operational analysis correctly reproduced the wave conditions in the open sea, it strongly underestimated the peak values of both the sea level and the wave height at the coast. The storm surge from both the 2 and 10 km forcing experiments shows a large

spread at the coast with some simulations strongly overestimating the peak values. Similarly, the simulated significant wave height reaches maximum values ranging from 2 to more than 12 m at Pylos. Such a large spread in model results is mostly related to the complexity of the coastline. Indeed, the response of the sea to an intense cyclone with a highly variable wind pattern in space and time is strongly dependent on the specific meteorological and morphological conditions of the considered coastal location. Therefore, even a small deviation in the simulated cyclone path or intensity could greatly change the impact on the sea conditions. However, given the long duration (5 d) of the simulations, it is not surprising to see such a large spread. Indeed, the results presented in Fig. 3 show high variability in the mediane track and intensity in the different meteorological models that consequently simulated different locations (spanning over about 250 km of coastline) and timing of cyclones' landing.

In order to assess the uncertainty associated with the two sets of simulations (10 and 2 km grid resolution), we com-

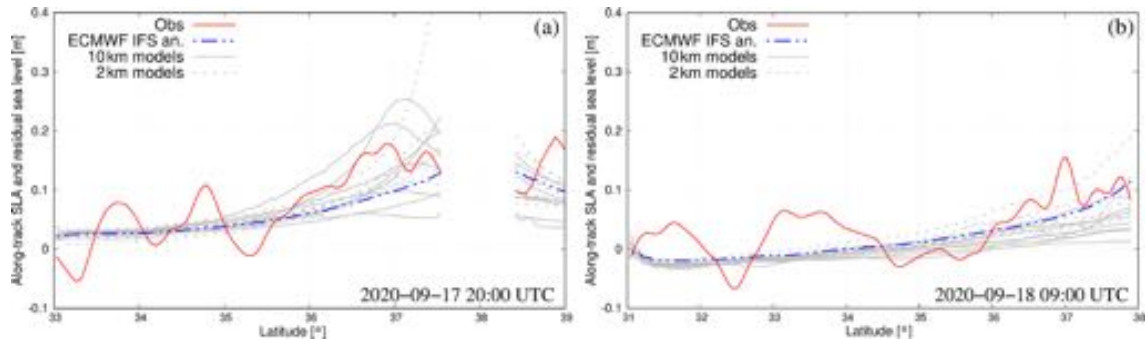


Figure 7. Along-track DAC-uncorrected SLA from altimeters and simulated sea levels. (a) Sentinel-3B (17 September 2020 20:00 UTC; magenta line in Fig. 6b) and (b) Sentinel-3A (18 September 2020 09:00 UTC; green line in Fig. 6c).

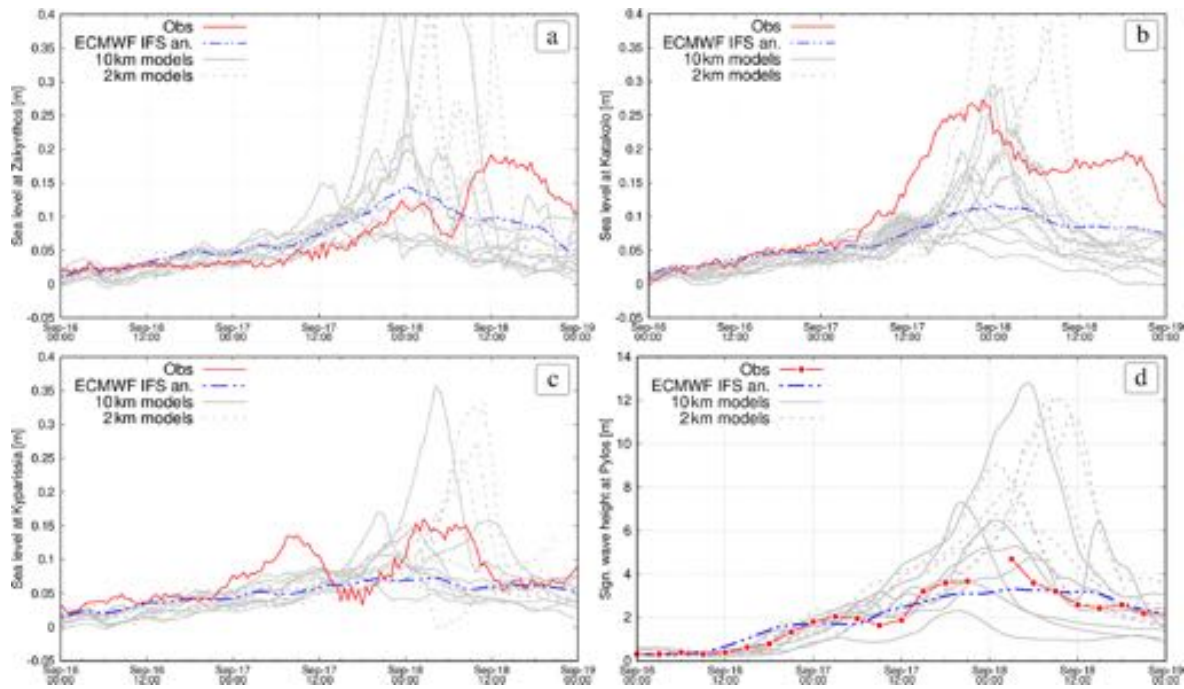


Figure 8. Observed and simulated residual sea levels at Zakynthos (a), Katakolo (b) and Kyparissia (c) and significant wave height at Pylos (d).

puted their ensemble mean and standard deviation (considered here as a measure of the ensemble spread), and we report in Table 3 the computed peak values and timing. We have to point out that the maximum value of the ensemble spread does not always coincide with the maximum value of the ensemble mean. These results highlight that the 2 km experiments generally produce a larger ensemble mean and spread with respect to the 10 km ones, but there is no clear indication that one of the simulation sets provides a more accurate reproduction of the maximum observed sea-level and wave values. The simulated maximum values of the ensemble mean are found to occur shifted by 2 to 10 h with respect to the observed peaks with a spread in the timing ranging from 3.4 to 6.7 h, depending on the location. It results in the

fact that the 2 km experiments have a lower spread of the peak time (4.2 h as the average of the selected stations) with respect to the 10 km ones (6.2 h), thus reducing the uncertainty in the time occurrence of the storm peak.

4 Assessing the potential coastal hazard

Most of the uncertainty associated with the simulation of a sea storm event, like Medicane Ianos, resides in the atmospheric forcing (Chaumillon et al., 2017; Cavaleri et al., 2018). Therefore, we could assume that using a different ocean–wave model system will produce similar results if driven by the same forcing and boundary conditions. We have seen in the previous sections that the different numeri-

Table 3. Observed and simulated peak values and timing (expressed as the ensemble mean and standard deviation) for the 10 and 2 km sets of simulations at the selected monitoring stations.

Variable and station	Observations		10 km ensemble				2 km ensemble			
	Peak value	Peak time	Mean peak value	Peak spread value	Mean peak time	Peak spread time	Mean peak value	Peak spread value	Mean peak time	Peak spread time
Sea level at Zakynthos	0.19 m	18 September 15:00 UTC	0.16 m	0.14 m	18 September 03:45 UTC	6.7 h	0.30 m	0.20 m	18 September 02:15 UTC	5.2 h
Sea level at Katakolo	0.27 m	17 September 22:30 UTC	0.24 m	0.22 m	18 September 01:00 UTC	5.8 h	0.47 m	0.34 m	18 September 01:00 UTC	4.0 h
Sea level at Kyparissia	0.16 m	18 September 02:30 UTC	0.13 m	0.10 m	18 September 04:15 UTC	5.8 h	0.15 m	0.11 m	18 September 08:30 UTC	4.3 h
Sign. wave height at Pylos	4.7 m	18 September 03:00 UTC	5.0 m	3.6 m	18 September 00:15 UTC	6.4 h	8.1 m	3.5 m	18 September 06:45 UTC	3.4 h

cal experiments display a large spread of the hazardous sea storm conditions at the coast, for both the peak value and its timing. Indeed, a small deviation in the meteorological simulation (cyclone's trajectory and intensity) may produce a relevant effect on the sea level and wave reproduction, especially in areas characterized by a complex coastline. Moreover, the 2 km spatial high-resolution atmospheric forcings did not show a clear improvement in these aspects. However, the ensemble approach developed through the application of an ensemble of numerical experiments could provide insights into model uncertainty when resolving storms and the limits of the probabilistic forecast of impacts.

It is clear that a substantial warning of hazardous sea conditions could be available 3 d before the event if the occurrence of severe conditions was simulated by all models, as in the downscaling exercise discussed here. However, along a complex coastline like the one of western Greece, a clear picture of the areas affected by severe waves and coastal flooding cannot be provided with accuracy by a single numerical simulation. On the contrary, the ensemble predictions could be used to assess the potential impact of the extreme event and eventually to allow for an efficient flood risk management plan.

Following Ferrarin et al. (2020), here we used the ensemble mean and spread for defining sea-level and wave hazard scenarios. In this study, we used all available numerical experiments (both the 10 and 2 km sets) for creating an ensemble of 16 members. To provide an overview of the expected potential hazard and its uncertainty associated with Ianos, the temporal maximum values of the sea level and the SWH computed using the ensemble mean and spread are shown in Figs. 9 and 10, respectively.

The maximum storm surge values are found at specific coastal locations, mostly represented by small bays and headlands where the combined action of wind and waves push the water to the coast (Fig. 9a). Similarly, the high ensemble standard deviation is obtained for narrow bands at specific

coastal segments (Fig. 9b). Assuming that we used proper models fed with proper initial/boundary conditions, the ensemble mean may be considered the most probable hazard scenario to be adopted for determining the coastal areas potentially flooded during the event. However, due to the large uncertainty in simulating such an intense event, a more conservative and safe hazard scenario could be provided by the sum of the ensemble mean and the ensemble standard deviation (Fig. 9c). It must be pointed out that such a conservative approach can generate a number of false warnings that may affect the population's future response to real warnings.

Similar considerations can be derived for the SWH presented in Fig. 10. Medicane and other small-scale cyclones are potentially damaging events on coastal areas, but the risk they impose could not be forecasted exactly (Ferrarin et al., 2020). The ensemble approach provides an overview of the coastal areas and infrastructures that can potentially be damaged by high waves, like the western side of Zakynthos Island where waves may reach values from 5 m (Fig. 10a) in the mean scenario to 9 m (Fig. 10c) in the conservative scenario.

It is worth noting that every coastal location has site-specific flooding and damaging thresholds which depend on the coastal morphology and storm defences. Therefore, the hazard scenarios of sea levels and waves could be extracted for particular coastal locations and used in combination with threshold levels. For issuing flood risk bulletins, the nearshore total sea level should be considered, which at a given coastal location is the sum of several contributions, such as mean sea-level variability, astronomical tide, storm surge, and wave setup and run-up, acting on different temporal and spatial scales (Barnard et al., 2019; Woodworth et al., 2019; Ferrarin et al., 2022). Therefore, the simulated storm surge (which also includes the wave setup) has to be added to the site-specific astronomical tide and mean sea level to estimate the total sea level. Consequently, in addition to the uncertainty mentioned above on the cyclone's intensity and

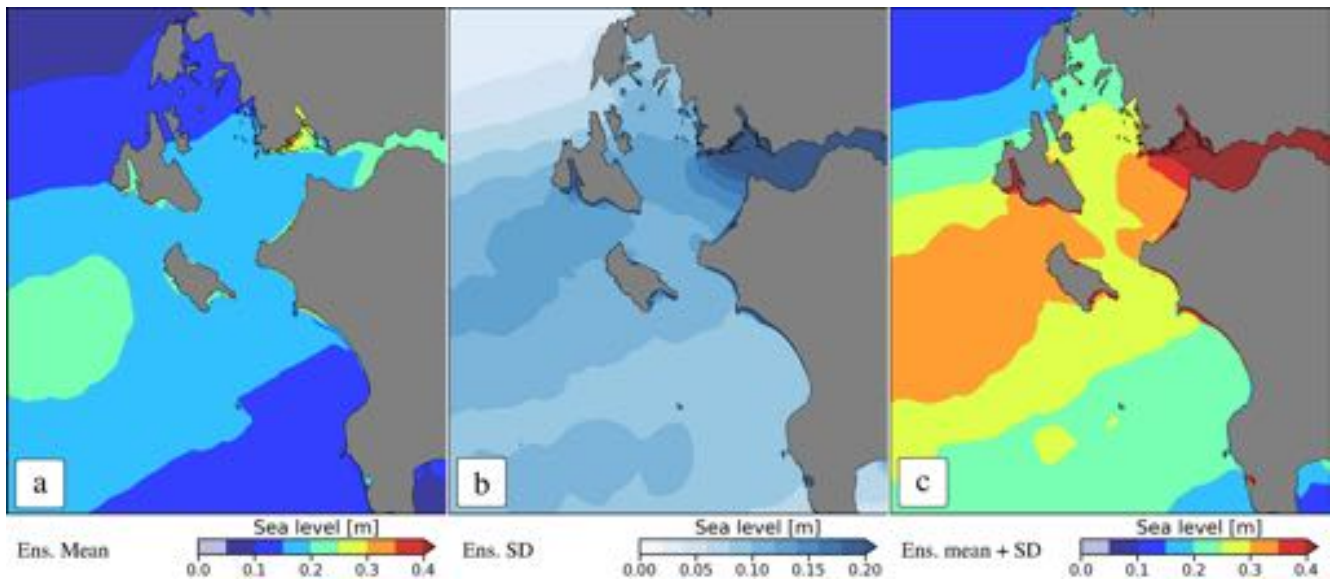


Figure 9. Maximum values of the storm surge ensemble mean (a), standard deviation (b) and the hazard scenario represented by the sum of the ensemble mean and standard deviation (c).

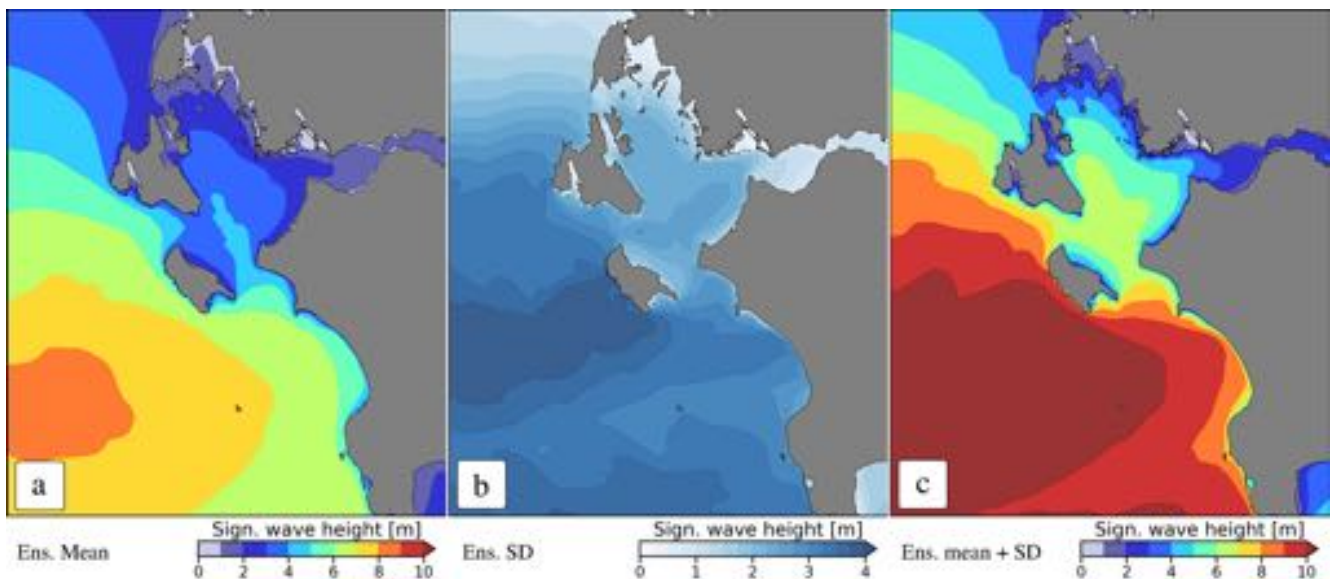


Figure 10. Maximum values of the significant wave height ensemble mean (a), standard deviation (b) and the hazard scenario represented by the sum of the ensemble mean and standard deviation (c).

path, its time of landfall may also have a significant role in the impacts depending on the superposition with the tidal peak. In order to evaluate the total sea level at the monitoring stations, the ensemble storm surge results should be added to the periodic tidal contribution that can be predicted with great precision for months, using a good harmonic analysis tool. For example, we report in Fig. 11 the computed total sea levels at the Katakolo tide gauge station.

Alerts usually refer to threshold levels associated with a site-specific low, mid and high risk of flooding. In the ex-

ample reported in Fig. 11, we considered hypothetical flooding alert levels at 0.3, 0.4 and 0.5 m. In this case, the results forced by ECMWF IFS analysis underestimate the sea level at the selected location and do not indicate the exceedance of even the yellow flooding alert level. Conversely, the mean of the ensemble, even if it overestimates the maximum sea level registered, indicates a high level of coastal risk. These results highlight the high level of uncertainty in simulating the total sea level at the coast, with the most severe scenario (obtained by summing the ensemble mean and the ensemble spread)

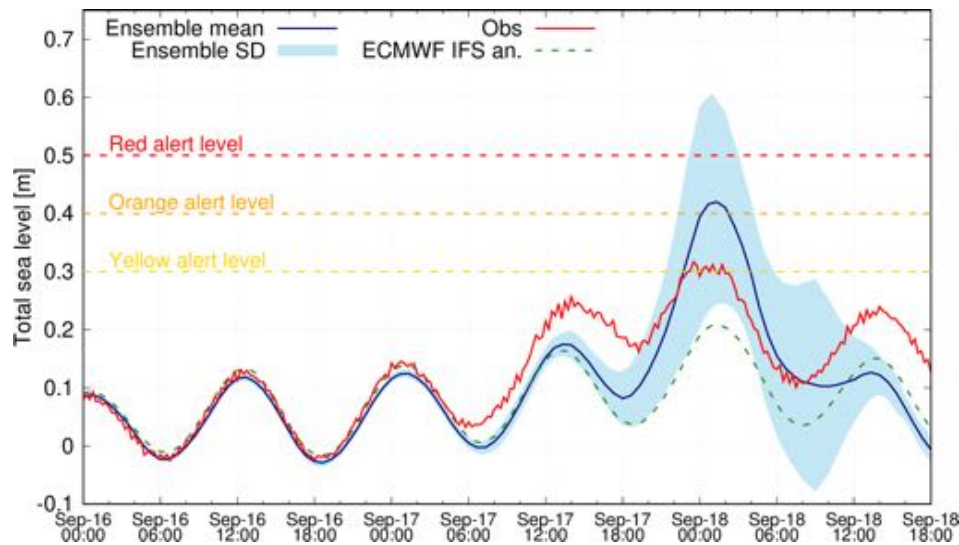


Figure 11. Observed and simulated total sea levels at Katakolo. The dashed yellow, orange and red lines indicate hypothetical thresholds for issuing flooding risk alerts.

providing evidence of the occurrence of exceptional sea conditions. Other more complex probabilistic approaches (e.g. probability of hazard threshold exceedance; Biolchi et al., 2022) can be further implemented by having a larger number of members and knowing the site-specific characteristics of the different coastal segments. In this context, deep-learning classifiers instead of binary threshold-based methods can be implemented in dynamical flood hazard mapping and risk assessment (Bentivoglio et al., 2022, and references therein).

5 Conclusions

In this study, the combined use of meteorological and ocean models enabled the analysis of extreme sea conditions driven by Medicane Ianos, which hit the western coast of Greece on 18 September 2020, flooding and damaging several coastal locations. The performed numerical experiments allowed the investigation of the propagation of uncertainty from the atmosphere to the ocean. It must be pointed out that the ensemble results are sensitive to the construction of the ensemble members, and therefore special attention must be taken in selecting the proper models, resolution and forcing, and initial and boundary conditions.

The large spread associated with the meteorological ensemble highlighted the large model uncertainty in simulating such an extreme weather event. Even modest deviations in the cyclone's path and intensity may result in large changes in the coastal sea levels and wave height. The uncertainty in the amplitude, location and timing of the storm peak was analysed. Increasing the meteorological model grid spacing from 10 to 2 km does not determine a clear improvement in the reproduction of the cyclone's impact on the sea conditions. Both the 10 and 2 km experiments show a large spread

of the cyclone track and intensity, with the 2 km simulations generally having deeper pressure minimums and stronger winds. This results in an overestimation of both the wave height and the sea levels in the Ionian Sea and along the western coast of Greece when using the 2 km meteorological fields as forcing for the ocean models. However, the 2 km experiments have a lower spread of the peak time with respect to the 10 km ones, thus reducing the uncertainty in the time occurrence of the storm peak.

Given the large model uncertainty associated with the reproduction of extreme meteo-marine events, we believe that the ensemble approach may provide very useful information on flood risk management plans. The different simulations have been combined to extract the ensemble mean and standard deviation (spread) used for outlining hazard scenarios. These simulated hazard conditions represent a fundamental component of the coastal risk assessment to be combined with the vulnerability and exposure of the specific coastal segment. With a larger number of ensemble members, it would be possible to calculate and estimate the site-specific probability of hazard threshold exceedance.

The meteorological simulations performed here are based on global ECMWF analysis and therefore do not represent the full predictability of Medicane Ianos. They are closer to a downscaling of reanalysis, given the small integration domain. However, the multi-model/multi-physics approach can be easily extended to operational forecasting for providing in advance information on the coastal areas potentially affected by hazardous sea conditions. The ensemble results can be used to develop dynamic flood maps of specific coastal areas (Barnard et al., 2019), thus forecasting the potential flood impact of such extreme phenomena.

Data availability. This study has been conducted using E.U. Copernicus Marine Service Information (2022a, <https://doi.org/10.48670/moi-00140>; 2022b, <https://doi.org/10.48670/moi-00178>).

Author contributions. CF conceived the idea of the study with the support of FP, SD and EF. FP, SD, MMM, EA, DSC, IP, CS, PP and JJGA performed the meteorological simulations. CF and MB performed the hydrodynamic and wave numerical simulations. CF collected the observations, analysed the sea-level and wave results, and prepared the figures (except Fig. 3, which has been produced by FP). All authors discussed, reviewed and edited the different versions of the manuscript.

Competing interests. The contact author has declared that none of the authors has any competing interests.

Disclaimer. Publisher's note: Copernicus Publications remains neutral with regard to jurisdictional claims in published maps and institutional affiliations.

Acknowledgements. The authors wish to thank Antonio Ricchi for providing the storage infrastructure and assistance.

Financial support. This article is based upon work from COST Action MedCylones, CA19109, supported by COST (European Cooperation in Science and Technology). This study has been partially supported by the Interreg Italy-Croatia STREAM project (Strategic development of flood management; project ID 10249186).

Review statement. This paper was edited by Mauricio Gonzalez and reviewed by Jose A. Jiménez and one anonymous referee.

References

- Avolio, E. and Miglietta, M. M.: Tornadoes in the Tyrrhenian regions of the Italian peninsula: The case study of 28 July 2019, *Atmos. Res.*, 278, 106285, <https://doi.org/10.1016/j.atmosres.2022.106285>, 2022.
- Bajo, M., Ferrarin, C., Umgiesser, G., Bonometto, A., and Coraci, E.: Modelling the barotropic sea level in the Mediterranean Sea using data assimilation, *Ocean Sci.*, 19, 559–579, <https://doi.org/10.5194/os-19-559-2023>, 2023.
- Barnard, P. L., Erikson, L. H., Foxgrover, A. C., Hart, J. A. F., Limber, P., O'Neill, A. C., van Ormondt, M., Vitousek, S., Wood, N., Hayden, M. K., and Jones, J. M.: Dynamic flood modeling essential to assess the coastal impacts of climate change, *Scientific Reports*, 9, 4309, <https://doi.org/10.1038/s41598-019-40742-z>, 2019.
- Bengtsson, L., Andrae, U., Aspelien, T., Batrak, Y., Calvo, J., de Rooy, W., Gleeson, E., Hansen-Sass, B., Homleid, M., Hortal, M., Ivarsson, K.-I., Lenderink, G., Niemelä, S., Nielsen, K. P., Onvlee, J., Rontu, L., Samuelsson, P., Muñoz, D. S., Subias, A., Tijm, S., Toll, V., Yang, X., and Ødegaard Køltzow, M.: The HARMONIE–AROME Model Configuration in the ALADIN–HIRLAM NWP System, *Mon. Weather Rev.*, 145, 1919–1935, <https://doi.org/10.1175/MWR-D-16-0417.1>, 2017.
- Bentivoglio, R., Isufi, E., Jonkman, S. N., and Taormina, R.: Deep learning methods for flood mapping: a review of existing applications and future research directions, *Hydrol. Earth Syst. Sci.*, 26, 4345–4378, <https://doi.org/10.5194/hess-26-4345-2022>, 2022.
- Bertotti, L. and Cavaleri, L.: The predictability of the “Voyager” accident, *Nat. Hazards Earth Syst. Sci.*, 8, 533–537, <https://doi.org/10.5194/nhess-8-533-2008>, 2008.
- Biolchi, L. G., Unguendoli, S., Bressan, L., Giambastiani, B. M. S., and Valentini, A.: Ensemble technique application to an XBeach-based coastal Early Warning System for the Northwest Adriatic Sea (Emilia-Romagna region, Italy), *Coast. Eng.*, 173, 104081, <https://doi.org/10.1016/j.coastaleng.2022.104081>, 2022.
- Bosom, E. and Jiménez, J. A.: Probabilistic coastal vulnerability assessment to storms at regional scale – application to Catalan beaches (NW Mediterranean), *Nat. Hazards Earth Syst. Sci.*, 11, 475–484, <https://doi.org/10.5194/nhess-11-475-2011>, 2011.
- Bowler, N. E., Arribas, A., and Mylne, K. R.: The benefits of multianalysis and poor man's ensembles, *Mon. Weather Rev.*, 136, 4113–4129, <https://doi.org/10.1175/2008MWR2381.1>, 2008.
- Bush, M., Allen, T., Bain, C., Boutle, I., Edwards, J., Finnenkoetter, A., Franklin, C., Hanley, K., Lean, H., Lock, A., Manners, J., Mittermaier, M., Morcrette, C., North, R., Petch, J., Short, C., Vosper, S., Walters, D., Webster, S., Weeks, M., Wilkinson, J., Wood, N., and Zerroukat, M.: The first Met Office Unified Model–JULES Regional Atmosphere and Land configuration, RAL1, *Geosci. Model Dev.*, 13, 1999–2029, <https://doi.org/10.5194/gmd-13-1999-2020>, 2020.
- Carrió, D., Homar, V., and Wheatley, D.: Potential of an EnKF Storm-Scale Data Assimilation System Over Sparse Observation Regions with Complex Orography, *Atmos. Res.*, 216, 186–206, <https://doi.org/10.1016/j.atmosres.2018.10.004>, 2019.
- Cavaleri, L., Bertotti, L., Torrisi, L., Bitner-Gregersen, E., Serio, M., and Onorato, M.: Rogue waves in crossing seas: The Louis Majesty accident, *J. Geophys. Res.-Oceans*, 117, C00J10, <https://doi.org/10.1029/2012JC007923>, 2012.
- Cavaleri, L., Abdalla, S., Benetazzo, A., Bertotti, L., Bidlot, J.-R., Breivik, Ø., Carniel, S., Jensen, R., Portilla-Yandun, J., Rogers, W., Roland, A., Sanchez-Arcilla, A., Smith, J., Staneva, J., Toledo, Y., van Vledder, G., and van der Westhuysen, A.: Wave modelling in coastal and inner seas, *Prog. Oceanogr.*, 167, 164–233, <https://doi.org/10.1016/j.pocean.2018.03.010>, 2018.
- Cavaleri, L., Bajo, M., Barbariol, F., Bastianini, M., Benetazzo, A., Bertotti, L., Chiggiato, J., Davolio, S., Ferrarin, C., Magnusson, L., Papa, A., Pezzutto, P., Pomaro, A., and Umgiesser, G.: The October 29, 2018 storm in Northern Italy – An exceptional event and its modeling, *Prog. Oceanogr.*, 178, 102178, <https://doi.org/10.1016/j.pocean.2019.102178>, 2019.
- Cavaleri, L., Bertotti, L., Ferrarin, C., Passaro, M., Pezzutto, P., and Pomaro, A.: Synergic use of altimeter and model sea level data in inner and coastal seas, *Remote Sens. Environ.*, 261, 112500, <https://doi.org/10.1016/j.rse.2021.112500>, 2021.
- Chaumillon, E., Bertin, X., Fortunato, A., Bajo, M., Schneider, J.-L., Dezileau, L., Walsh, J. P., Michelot, A., Chau-

- veau, E., Créach, A., Hénaff, A., Sauzeau, T., Waeles, B., Gervais, B., Jan, G., Baumann, J., Breilh, J.-F., and Pedreros, R.: Storm-induced marine flooding: lessons from a multidisciplinary approach, *Earth-Sci. Rev.*, 165, 151–184, <https://doi.org/10.1016/j.earscirev.2016.12.005>, 2017.
- Cloke, H. L. and Pappenberger, F.: Ensemble flood forecasting: A review, *J. Hydrol.*, 375, 613–626, <https://doi.org/10.1016/j.jhydrol.2009.06.005>, 2009.
- Codiga, D. L.: Unified Tidal Analysis and Prediction Using the UTide Matlab Functions, Tech. Rep. 2011-01, Graduate School of Oceanography, University of Rhode Island, Narragansett, RI, <http://www.po.gso.uri.edu/~codiga/utide/utide.htm> (last access: 14 February 2023), 2011.
- Comellas Prat, A., Federico, S., Torcasio, R. C., D’Adderio, L. P., Dietrich, S., and Panegrossi, G.: Evaluation of the Sensitivity of Mediane Ianos to Model Microphysics and Initial Conditions Using Satellite Measurements, *Remote Sens.*, 13, 4984, <https://doi.org/10.3390/rs13244984>, 2021.
- Davolio, S., Fera, S. D., Laviola, S., Miglietta, M. M., and Levizzani, V.: Heavy Precipitation over Italy from the Mediterranean Storm “Vaia” in October 2018: Assessing the Role of an Atmospheric River, *Mon. Weather Rev.*, 148, 3571–3588, <https://doi.org/10.1175/MWR-D-20-0021.1>, 2020.
- De Leo, F., Besio, G., Zolezzi, G., and Bezzi, M.: Coastal vulnerability assessment: through regional to local downscaling of wave characteristics along the Bay of Lalzit (Albania), *Nat. Hazards Earth Syst. Sci.*, 19, 287–298, <https://doi.org/10.5194/nhess-19-287-2019>, 2019.
- Di Liberto, T., Colle, B. A., Georgas, N., Blumberg, A. F., and Taylor, A. A.: Verification of a Multimodel Storm Surge Ensemble around New York City and Long Island for the Cool Season, *Weather Forecast.*, 26, 922–939, <https://doi.org/10.1175/waf-d-10-05055.1>, 2011.
- Ducrocq, V., Braud, I., Davolio, S., Ferretti, R., Flamant, C., Jansa, A., Kalthoff, N., Richard, E., Taupier-Letage, I., Ayrat, P.-A., Belamari, S., Berne, A., Borga, M., Boudevillain, B., Bock, O., Boichard, J.-L., Bouin, M.-N., Bousquet, O., Bouvier, C., Chiggiato, J., Cimini, D., Corsmeier, U., Coppola, L., Cocquerez, P., Defer, E., Delanoë, J., Girolamo, P. D., Doerenbecher, A., Drobinski, P., Dufournet, Y., Fourrié, N., Gourley, J. J., Labatut, L., Lambert, D., Coz, J. L., Marzano, F. S., Molinié, G., Montani, A., Nord, G., Nuret, M., Ramage, K., Rison, W., Rousot, O., Said, F., Schwarzenboeck, A., Testor, P., Baelen, J. V., Vincendon, B., Aran, M., and Tamayo, J.: HyMeX-SOP1: The Field Campaign Dedicated to Heavy Precipitation and Flash Flooding in the Northwestern Mediterranean, *B. Am. Meteorol. Soc.*, 95, 1083–1100, <https://doi.org/10.1175/BAMS-D-12-00244.1>, 2014.
- Emanuel, K.: Genesis and maintenance of “Mediterranean hurricanes”, *Adv. Geosci.*, 2, 217–220, <https://doi.org/10.5194/adgeo-2-217-2005>, 2005.
- EMODnet Bathymetry Consortium: EMODnet Digital Bathymetry (DTM 2020), EMODnet Bathymetry Consortium, <https://doi.org/10.12770/bb6a87dd-e579-4036-abe1-e649cea9881a>, 2020.
- E.U. Copernicus Marine Service Information: European Seas Along Track L 3 Sea Level Anomalies Nrt Tailored For Data Assimilation, Copernicus Marine Data Store [data set], <https://doi.org/10.48670/moi-00140>, 2022a.
- E.U. Copernicus Marine Service Information: Global Ocean L 3 Spectral Parameters From Nrt Satellite Measurements, Copernicus Marine Data Store [data set], <https://doi.org/10.48670/moi-00178>, 2022b.
- Ferrarin, C., Roland, A., Bajo, M., Umgiesser, G., Cucco, A., Davolio, S., Buzzi, A., Malguzzi, P., and Drofa, O.: Tide-surge-wave modelling and forecasting in the Mediterranean Sea with focus on the Italian coast, *Ocean Model.*, 61, 38–48, <https://doi.org/10.1016/j.ocemod.2012.10.003>, 2013.
- Ferrarin, C., Valentini, A., Vodopivec, M., Klaric, D., Massaro, G., Bajo, M., De Pascalis, F., Fadini, A., Ghezzi, M., Mene-gon, S., Bressan, L., Unguendoli, S., Fettich, A., Jerman, J., Ličer, M., Fustar, L., Papa, A., and Carraro, E.: Integrated sea storm management strategy: the 29 October 2018 event in the Adriatic Sea, *Nat. Hazards Earth Syst. Sci.*, 20, 73–93, <https://doi.org/10.5194/nhess-20-73-2020>, 2020.
- Ferrarin, C., Bajo, M., Benetazzo, A., Cavaleri, L., Chiggiato, J., Davison, S., Davolio, S., Lionello, P., Orlić, M., and Umgiesser, G.: Local and large-scale controls of the exceptional Venice floods of November 2019, *Prog. Oceanogr.*, 197, 102628, <https://doi.org/10.1016/j.pocean.2021.102628>, 2021.
- Ferrarin, C., Lionello, P., Orlić, M., Raicich, F., and Salvadori, G.: Venice as a paradigm of coastal flooding under multiple compound drivers, *Scientific Reports*, 12, 5754, <https://doi.org/10.1038/s41598-022-09652-5>, 2022.
- Flaounas, E., Gray, S. L., and Teubler, F.: A process-based anatomy of Mediterranean cyclones: from baroclinic lows to tropical-like systems, *Weather Clim. Dynam.*, 2, 255–279, <https://doi.org/10.5194/wcd-2-255-2021>, 2021.
- Flaounas, E., Davolio, S., Raveh-Rubin, S., Pantillon, F., Miglietta, M. M., Gaertner, M. A., Hatzaki, M., Homar, V., Khodayar, S., Korres, G., Kotroni, V., Kushta, J., Reale, M., and Ricard, D.: Mediterranean cyclones: current knowledge and open questions on dynamics, prediction, climatology and impacts, *Weather Clim. Dynam.*, 3, 173–208, <https://doi.org/10.5194/wcd-3-173-2022>, 2022.
- Jankov, I., Berner, J., Beck, J., Jiang, H., Olson, J. B., Grell, G., Smirnova, T. G., Benjamin, S. G., and Brown, J. M.: A Performance Comparison between Multiphysics and Stochastic Approaches within a North American RAP Ensemble, *Mon. Weather Rev.*, 145, 1161–1179, <https://doi.org/10.1175/MWR-D-16-0160.1>, 2017.
- Lac, C., Chaboureaud, J.-P., Masson, V., Pinty, J.-P., Tulet, P., Escobar, J., Leriche, M., Barthe, C., Aouizerats, B., Augros, C., Aumond, P., Auguste, F., Bechtold, P., Berthet, S., Bielli, S., Bosseur, F., Caumont, O., Cohard, J.-M., Colin, J., Couvreur, F., Cuxart, J., Delautier, G., Dauhut, T., Ducrocq, V., Filippi, J.-B., Gazen, D., Geoffroy, O., Gheusi, F., Honnert, R., Lafore, J.-P., Lebeaupin Brossier, C., Libois, Q., Lunet, T., Mari, C., Maric, T., Mascart, P., Mogé, M., Molinié, G., Nuissier, O., Pantillon, F., Peyrillé, P., Pergaud, J., Perraud, E., Pianezze, J., Redelsperger, J.-L., Ricard, D., Richard, E., Riette, S., Rodier, Q., Schoetter, R., Seyfried, L., Stein, J., Suhre, K., Taufour, M., Thouron, O., Turner, S., Verrelle, A., Vié, B., Visentin, F., Vionnet, V., and Wautelet, P.: Overview of the Meso-NH model version 5.4 and its applications, *Geosci. Model Dev.*, 11, 1929–1969, <https://doi.org/10.5194/gmd-11-1929-2018>, 2018.
- Lagouvardos, K., Karagiannidis, A., Dafis, S., Kalimeris, A., and Kotroni, V.: Ianos - A Hurricane in the Mediter-

- anean, B. *Am. Meteorol. Soc.*, 103, E1621–E1636, <https://doi.org/10.1175/BAMS-D-20-0274.1>, 2022.
- Leutbecher, M. and Palmer, T.: Ensemble forecasting, *J. Comput. Phys.*, 227, 3515–3539, <https://doi.org/10.1016/j.jcp.2007.02.014>, 2008.
- Lionello, P., Bhend, J., Buzzi, A., Della-Marta, P. M., Krichak, S., Jansá, A., Maheras, P., Sanna, A., Trigo, I., and Trigo, R.: Chapter 6 Cyclones in the Mediterranean region: climatology and effects on the environment, in: *Developments in Earth and Environmental Science*, edited by: Lionello, P., Malanotte-Rizzoli, P., and Boscolo, R., Elsevier, Amsterdam, The Netherlands, 325–372, [https://doi.org/10.1016/S1571-9197\(06\)80009-1](https://doi.org/10.1016/S1571-9197(06)80009-1), 2006.
- Lionello, P., Conte, D., and Reale, M.: The effect of cyclones crossing the Mediterranean region on sea level anomalies on the Mediterranean Sea coast, *Nat. Hazards Earth Syst. Sci.*, 19, 1541–1564, <https://doi.org/10.5194/nhess-19-1541-2019>, 2019.
- Miglietta, M. M.: Mediterranean Tropical-Like Cyclones (Medicanes), *Atmosphere*, 10, 206, <https://doi.org/10.3390/atmos10040206>, 2019.
- Miglietta, M. M., Carnevale, D., Levizzani, V., and Rotunno, R.: Role of moist and dry air advection in the development of Mediterranean tropical-like cyclones (medicanes), *Q. J. Roy. Meteor. Soc.*, 147, 876–899, <https://doi.org/10.1002/qj.3951>, 2021.
- Patlakas, P., Stathopoulos, C., Tsalis, C., and Kallos, G.: Wind and wave extremes associated with tropical-like cyclones in the Mediterranean basin, *Int. J. Climatol.*, 41, E1623–E1644, <https://doi.org/10.1002/joc.6795>, 2021.
- Pytharoulis, I., Kartsios, S., Tegoulas, I., Feidas, H., Miglietta, M. M., Matsangouras, I., and Karacostas, T.: Sensitivity of a Mediterranean Tropical-Like Cyclone to Physical Parameterizations, *Atmosphere*, 9, 436, <https://doi.org/10.3390/atmos9110436>, 2018.
- Rabier, F., Järvinen, H., Klinker, E., Mahfouf, J.-F., and Simmons, A.: The ECMWF operational implementation of four-dimensional variational assimilation. I: Experimental results with simplified physics, *Q. J. Roy. Meteor. Soc.*, 126, 1143–1170, <https://doi.org/10.1002/qj.49712656415>, 2000.
- Roland, A., Cucco, A., Ferrarin, C., Hsu, T.-W., Liau, J.-M., Ou, S.-H., Umgiesser, G., and Zanke, U.: On the development and verification of a 2-D coupled wave-current model on unstructured meshes, *J. Marine Syst.*, 78, S244–S254, <https://doi.org/10.1016/j.jmarsys.2009.01.026>, 2009.
- Rozante, J. R., Moreira, D. S., Godoy, R. C. M., and Fernandes, A. A.: Multi-model ensemble: technique and validation, *Geosci. Model Dev.*, 7, 2333–2343, <https://doi.org/10.5194/gmd-7-2333-2014>, 2014.
- Sánchez-Arcilla, A., Sierra, J. P., Brown, S., Casas-Prat, M., Nicholls, R. J., Lionello, P., and Conte, D.: A review of potential physical impacts on harbours in the Mediterranean Sea under climate change, *Reg. Environ. Change*, 16, 2471–2484, <https://doi.org/10.1007/s10113-016-0972-9>, 2016.
- Scicchitano, G., Scardino, G., Monaco, C., Piscitelli, A., Milella, M., De Giosa, F., and Mastronuzzi, G.: Comparing impact effects of common storms and Medicanes along the coast of south-eastern Sicily, *Mar. Geol.*, 439, 106556, <https://doi.org/10.1016/j.margeo.2021.106556>, 2021.
- Slingo, J. and Palmer, T.: Uncertainty in weather and climate prediction, *Philos. T. Roy. Soc. A*, 369, 4751–4767, <https://doi.org/10.1098/rsta.2011.0161>, 2011.
- Taylor, K. E.: Summarizing multiple aspects of model performances in a single diagram, *J. Geophys. Res.*, 106, 7183–7192, 2001.
- Umgiesser, G., Ferrarin, C., Cucco, A., De Pascalis, F., Bellafiore, D., Ghezzi, M., and Bajo, M.: Comparative hydrodynamics of 10 Mediterranean lagoons by means of numerical modeling, *J. Geophys. Res.-Oceans*, 119, 2212–2226, <https://doi.org/10.1002/2013JC009512>, 2014.
- Umgiesser, G., Ferrarin, C., Bajo, M., Bellafiore, D., Cucco, A., De Pascalis, F., Ghezzi, M., Mc Kiver, W., and Arpaia, L.: Hydrodynamic modelling in marginal and coastal seas – The case of the Adriatic Sea as a permanent laboratory for numerical approach, *Ocean Model.*, 179, 102123, <https://doi.org/10.1016/j.ocemod.2022.102123>, 2022.
- Walters, D., Boutle, I., Brooks, M., Melvin, T., Stratton, R., Vosper, S., Wells, H., Williams, K., Wood, N., Allen, T., Bushell, A., Copsey, D., Earnshaw, P., Edwards, J., Gross, M., Hardiman, S., Harris, C., Heming, J., Klingaman, N., Levine, R., Manners, J., Martin, G., Milton, S., Mittermaier, M., Morcrette, C., Riddick, T., Roberts, M., Sanchez, C., Selwood, P., Stirling, A., Smith, C., Suri, D., Tennant, W., Vidale, P. L., Wilkinson, J., Willett, M., Woolnough, S., and Xavier, P.: The Met Office Unified Model Global Atmosphere 6.0/6.1 and JULES Global Land 6.0/6.1 configurations, *Geosci. Model Dev.*, 10, 1487–1520, <https://doi.org/10.5194/gmd-10-1487-2017>, 2017.
- Woodworth, P. L., Melet, A., Marcos, M., Ray, D. R., Wöppelmann, G., Sasaki, Y. N., Cirano, M., Hibbert, A., Huthance, J. M., Monserrat, S., and Merrifield, M. A.: Forcing factors affecting sea level changes at the coast, *Surv. Geophys.*, 40, 1351–1397, <https://doi.org/10.1007/s10712-019-09531-1>, 2019.
- Zekkos, D., Zalachoris, G., Alvertos, A., Amatya, P., Blunts, P., Clark, M., Dafis, S., Farmakis, I., Ganas, A., Hille, M., Kalimogiannis, V., Karagiannidis, A., Karantanellis, E., Khan, K., Kirshbaum, D., Kourkoulis, R., Kotroni, V., Ktenidou, O., Lagouvardos, K., Loli, M., Makrinikas, A., Marinos, V., Manousakis, J., Nikas, K., Panousis, D., Papathanassiou, G., Saroglou, C., Simopoulos, A., Stanley, T., Tsavalas, A., and Valkaniotis, S.: The September 18-20 2020 Medicane Ianos Impact on Greece – Phase I Reconnaissance Report, *Geotechnical Extreme Events Reconnaissance Report*, GEER-068, <https://doi.org/10.18118/G6MT1T>, 2020.
- Zimbo, F., Ingemi, D., and Guidi, G.: The Tropical-like Cyclone “Ianos” in September 2020, *Meteorology*, 1, 29–44, <https://doi.org/10.3390/meteorology1010004>, 2022.
- Zou, Q.-P., Chen, Y., Cluckie, I., Hewston, R., Pan, S., Peng, Z., and Reeve, D.: Ensemble prediction of coastal flood risk arising from overtopping by linking meteorological, ocean, coastal and surf zone models, *Q. J. Roy. Meteor. Soc.*, 139, 298–313, <https://doi.org/10.1002/qj.2078>, 2013.