

# Journal Pre-proof

Development and Validation of a Score for Fibrotic Non-Alcoholic Steatohepatitis

Federica Tavaglione, Oveis Jamialahmadi, Antonio De Vincentis, Sami Qadri, Mohammad Erfan Mowlaei, Rosellina Margherita Mancina, Ester Ciociola, Simone Carotti, Giuseppe Perrone, Vincenzo Bruni, Ida Francesca Gallo, Dario Tuccinardi, Cristiana Bianco, Daniele Prati, Silvia Manfrini, Paolo Pozzilli, Antonio Picardi, Marco Caricato, Hannele Yki-Järvinen, Luca Valenti, Umberto Vespasiani-Gentilucci, Stefano Romeo



PII: S1542-3565(22)00385-8  
DOI: <https://doi.org/10.1016/j.cgh.2022.03.044>  
Reference: YJCGH 58426

To appear in: *Clinical Gastroenterology and Hepatology*  
Accepted Date: 28 March 2022

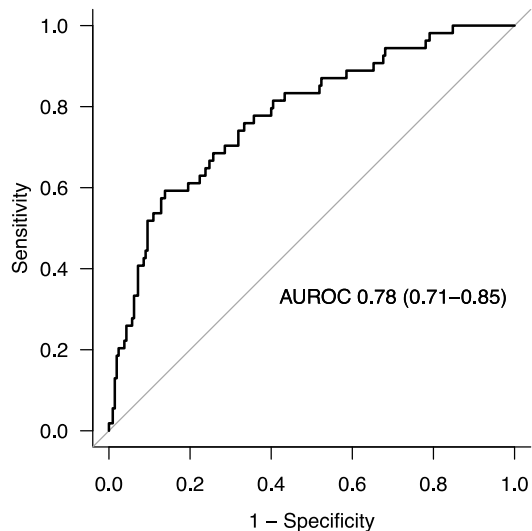
Please cite this article as: Tavaglione F, Jamialahmadi O, De Vincentis A, Qadri S, Mowlaei ME, Mancina RM, Ciociola E, Carotti S, Perrone G, Bruni V, Gallo IF, Tuccinardi D, Bianco C, Prati D, Manfrini S, Pozzilli P, Picardi A, Caricato M, Yki-Järvinen H, Valenti L, Vespasiani-Gentilucci U, Romeo S, Development and Validation of a Score for Fibrotic Non-Alcoholic Steatohepatitis, *Clinical Gastroenterology and Hepatology* (2022), doi: <https://doi.org/10.1016/j.cgh.2022.03.044>.

This is a PDF file of an article that has undergone enhancements after acceptance, such as the addition of a cover page and metadata, and formatting for readability, but it is not yet the definitive version of record. This version will undergo additional copyediting, typesetting and review before it is published in its final form, but we are providing this version to give early visibility of the article. Please note that, during the production process, errors may be discovered which could affect the content, and all legal disclaimers that apply to the journal pertain.

© 2022 by the AGA Institute

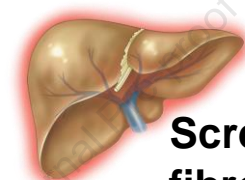
# Fibrotic NASH Index (FNI)

(AST, HDL, HbA1c)

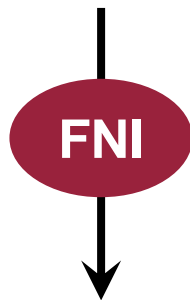


## Primary care, diabetology and endocrinology clinics

High-risk individuals  
(overweight/obesity, type 2 diabetes, metabolic syndrome)



**Screening for fibrotic NASH**  
(NASH + NAS $\geq$ 4 + F $\geq$ 2)



**Liver clinic**

Transient elastography, follow-up, clinical trials

Clinical Gastroenterology  
and Hepatology

**Development and Validation of a Score for Fibrotic Non-Alcoholic Steatohepatitis***Short Title: Fibrotic NASH Index (FNI)*

Federica Tavaglione<sup>1,2\*°</sup>, Oveis Jamialahmadi<sup>2\*</sup>, Antonio De Vincentis<sup>3,4\*</sup>, Sami Qadri<sup>5,6</sup>,  
Mohammad Erfan Mowlaei<sup>7</sup>, Rosellina Margherita Mancina<sup>2</sup>, Ester Ciociola<sup>2</sup>, Simone  
Carotti<sup>8,9</sup>, Giuseppe Perrone<sup>9,10</sup>, Vincenzo Bruni<sup>11</sup>, Ida Francesca Gallo<sup>11</sup>, Dario Tuccinardi<sup>12</sup>,  
Cristiana Bianco<sup>13</sup>, Daniele Prati<sup>13</sup>, Silvia Manfrini<sup>12</sup>, Paolo Pozzilli<sup>12</sup>, Antonio Picardi<sup>1</sup>,  
Marco Caricato<sup>14</sup>, Hannele Yki-Järvinen<sup>5,6</sup>, Luca Valenti<sup>13,15</sup>, Umberto Vespasiani-  
Gentilucci<sup>1#°</sup>, Stefano Romeo<sup>2,16,17#°</sup>

\* shared first authorship

# shared senior authorship

° corresponding authors

<sup>1</sup> Clinical Medicine and Hepatology Unit, Department of Internal Medicine and Geriatrics, Campus Bio-Medico University, Rome, Italy.

<sup>2</sup> Department of Molecular and Clinical Medicine, Institute of Medicine, Sahlgrenska Academy, Wallenberg Laboratory, University of Gothenburg, Gothenburg, Sweden.

<sup>3</sup> Internal Medicine Unit, Department of Internal Medicine and Geriatrics, Campus Bio-Medico University, Rome, Italy.

<sup>4</sup> Clinical Lecturer of Internal Medicine, Saint Camillus International University of Health and Medical Sciences, Rome, Italy.

<sup>5</sup> Department of Medicine, University of Helsinki and Helsinki University Hospital, Helsinki, Finland.

<sup>6</sup> Minerva Foundation Institute for Medical Research, Helsinki, Finland.

- <sup>7</sup> Department of Computer & Information Sciences, College of Science and Technology, Temple University, Philadelphia, US.
- <sup>8</sup> Research Unit of Microscopic and Ultrastructural Anatomy, Department of Medicine, Campus Bio-Medico University, Rome, Italy.
- <sup>9</sup> Predictive Molecular Diagnostic Unit, Department of Pathology, Campus Bio-Medico University Hospital, Rome, Italy.
- <sup>10</sup> Research Unit of Pathology, Campus Bio-Medico University, Rome, Italy.
- <sup>11</sup> Bariatric Surgery Unit, Campus Bio-Medico University, Rome, Italy.
- <sup>12</sup> Department of Endocrinology and Diabetes, University Campus Bio-Medico, Rome, Italy.
- <sup>13</sup> Translational Medicine, Department of Transfusion Medicine and Hematology, Fondazione IRCCS Ca' Granda Ospedale Maggiore Policlinico, Milano, Italy.
- <sup>14</sup> Unit of Colon and Rectal Surgery, Department of General Surgery, Campus Bio-Medico University, Rome, Italy.
- <sup>15</sup> Department of Pathophysiology and Transplantation, Università degli Studi di Milano, Milano, Italy.
- <sup>16</sup> Department of Cardiology, Sahlgrenska University Hospital, Gothenburg, Sweden.
- <sup>17</sup> Clinical Nutrition Unit, Department of Medical and Surgical Sciences, University Magna Graecia, Catanzaro, Italy.

### **Corresponding authors**

Stefano Romeo, MD, PhD, Department of Molecular and Clinical Medicine, Institute of Medicine, Sahlgrenska Academy, Wallenberg Laboratory, University of Gothenburg, Bruna Stråket 16, 41345 Gothenburg, Sweden. Telephone number: +46(0)313426735. E-mail: stefano.romeo@wlab.gu.se

Umberto Vespasiani-Gentilucci, MD, PhD, Clinical Medicine and Hepatology Unit, Department of Internal Medicine and Geriatrics, Campus Bio-Medico University, Via Alvaro del Portillo 200, 00128 Rome, Italy. Telephone number: (+39)06225411207. E-mail: u.vespasiani@policlinicocampus.it

Federica Tavaglione, MD, Clinical Medicine and Hepatology Unit, Department of Internal Medicine and Geriatrics, Campus Bio-Medico University, Via Alvaro del Portillo 200, 00128 Rome, Italy. Telephone number: (+39)06225411207. E-mail: f.tavaglione@unicampus.it

**Word count:** 4000 words (including the main text, references, and table/figure legends)

**Number of Tables:** 3

**Number of Figures:** 3

### **Funding**

This work was supported by a project grant from the Swedish Research Council (Vetenskapsrådet (VR), 2021-005208), the Swedish state under the Agreement between the Swedish government and the county councils (the ALF agreement, SU 2018-04276), the Swedish Diabetes Foundation (DIA 2020-518), the Swedish Heart Lung Foundation (20200191), the Wallenberg Academy Fellows from the Knut and Alice Wallenberg Foundation (KAW 2017.0203), the Novonordisk Project grants in Endocrinology and Metabolism (NNF20OC0063883), Astra Zeneca Agreement for Research, and Grant SSF ITM17-0384, Swedish Foundation for Strategic Research (SR).

### **Abbreviations**

ALT, alanine aminotransferase; AST, aspartate aminotransferase; AUROC, area under the receiver operating characteristic curve; BMI, body mass index; CI, confidence interval; cT1, iron-corrected T1; FAST, FibroScan-AST; FIB-4, fibrosis-4 index; FNI, fibrotic NASH index; GGT, gamma glutamyltransferase; HbA1c, hemoglobin A1c; HDL, high-density lipoprotein; LDL, low-density lipoprotein; NAFLD, non-alcoholic fatty liver disease; NAS, NAFLD activity score; NASH, non-alcoholic steatohepatitis; NPV, negative predictive value; PDFF, proton density fat fraction; PPV, positive predictive value.

### **Conflicts of interest**

The authors declare no financial or other relationships with drug manufacturers that could lead to a conflict of interest.

### **Author contributions**

UVG and SR contributed to study concept and design. FT, OJ, ADV, UVG, and SR contributed to drafting the manuscript. FT, OJ, and ADV contributed to perform the statistical analysis. MEM contributed to developing the website. All authors contributed to analysis and interpretation of data, critically revised the manuscript for important intellectual content, and approved the final version for submission. All authors had fully access to all the data in the study and take responsibility for the integrity of the data and the accuracy of the data analysis.

### **Data availability statement**

UK Biobank data are publicly available through a procedure described at <http://www.ukbiobank.ac.uk/using-the-resource/>. All other data supporting the findings of this study are available within the article.

**Abstract**

**Background and aims:** Non-invasive assessment of histological features of non-alcoholic fatty liver disease (NAFLD) has been an intensive research area over the last decade. Herein, we aimed to develop a simple non-invasive score using routine laboratory tests to identify, among individuals at high risk for NAFLD, those with fibrotic non-alcoholic steatohepatitis (NASH) defined as NASH, NAFLD activity score (NAS)  $\geq 4$ , and fibrosis stage  $\geq 2$ .

**Methods:** The derivation cohort included 264 morbidly obese individuals undergoing intraoperative liver biopsy in Rome, Italy. The best predictive model was developed and internally validated using a bootstrapping stepwise logistic regression analysis (2000 bootstrap samples). Performance was estimated by the area under the receiver operating characteristic curve (AUROC). External validation was assessed in three independent European cohorts (Finland, n=370; Italy n=947; England n=5,368) of individuals at high risk for NAFLD.

**Results:** The final predictive model, designated as Fibrotic NASH Index (FNI), combined aspartate aminotransferase (AST), high-density lipoprotein (HDL) cholesterol, and hemoglobin A1c (HbA1c). The performance of FNI for fibrotic NASH was satisfactory in both derivation and external validation cohorts (AUROCs 0.78 and 0.80-0.95, respectively). In the derivation cohort, rule-out and rule-in cut-offs were 0.10 for sensitivity  $\geq 0.89$  (negative predictive value [NPV] 0.93) and 0.33 for specificity  $\geq 0.90$  (positive predictive value [PPV] 0.57), respectively. In the external validation cohorts, sensitivity ranged from 0.87 to 1 (NPV 0.99-1) and specificity from 0.73 to 0.94 (PPV 0.12-0.49) for rule-out and rule-in cut-off, respectively.

**Conclusion:** FNI is an accurate, simple, and affordable non-invasive score which can be used in primary healthcare to screen for fibrotic NASH individuals with dysmetabolism.

**Keywords:** MAFLD; metabolic dysfunction-associated fatty liver disease; type 2 diabetes; obesity; non-invasive tests.

Journal Pre-proof



## Introduction

Following the global burden of obesity and type 2 diabetes, non-alcoholic fatty liver disease (NAFLD) is now the major cause of chronic liver disease worldwide.<sup>1</sup> NAFLD encompasses a broad spectrum of conditions, from isolated hepatic fat accumulation to hepatocellular damage and inflammation (non-alcoholic steatohepatitis, NASH), leading to fibrosis and end-stage liver disease, namely cirrhosis and hepatocellular carcinoma.<sup>2,3</sup> Obesity and type 2 diabetes are the strongest environmental factors increasing the risk of NAFLD.<sup>4</sup> However, despite the very large number of individuals with NAFLD, only a minority progress to cirrhosis and hepatocellular carcinoma.<sup>1</sup>

A body of evidence shows that individuals with fibrotic NASH, the inflammatory form of NAFLD associated with significant activity and fibrosis, are at risk of developing advanced liver disease.<sup>5</sup> The gold standard for diagnosing NASH and liver fibrosis is still a histological assessment by liver biopsy, an invasive and costly procedure which is not devoid of complications.<sup>6,7</sup>

The identification of individuals with fibrotic NASH in primary healthcare is crucial because these individuals will benefit the most from a referral to liver clinic for further investigation and follow-up. Moreover, these individuals are the ideal candidates for inclusion in NASH clinical trials.<sup>8,9</sup>

Therefore, due to the large number of individuals with NAFLD and the invasiveness of liver biopsy, non-invasive screening scores for fibrotic NASH are urgently needed. Indeed, existing scores are mainly focused on the assessment of liver fibrosis, the most relevant prognostic factor in NAFLD.<sup>10,11</sup> Up to date, three non-invasive scores have been specifically generated to assess fibrotic NASH, namely MACK-3 (hoMa, Ast, CK18),<sup>12</sup> NIS4,<sup>13</sup> and FibroScan-AST (FAST) score.<sup>14</sup> However, these scores are based on blood tests available only

in highly specialized liver clinics or require instrumental evaluation by vibration-controlled transient elastography.

In this study, we aimed to develop a simple non-invasive score based on routine laboratory tests to screen for and identify fibrotic NASH in individuals at high risk for NAFLD in primary healthcare.

## Methods

### *Derivation cohort*

**MAFALDA cohort.** A total of 264 participants from the “Molecular Architecture of FAtty Liver Disease in individuals with obesity undergoing bAriatric surgery (MAFALDA)” were included in the analyses.<sup>15</sup> Briefly, consecutive individuals with morbid obesity eligible for bariatric surgery, without history of alcohol abuse ( $\geq 30/20$  g/day in men/women), chronic viral hepatitis, and other causes of liver disease, were recruited from May 2020 to June 2021 at Campus Bio-Medico University Hospital, Rome, Italy. Preoperative clinical and laboratory data were collected using standardized procedures. Intraoperative liver biopsy was obtained and scored according to NAS classification.<sup>16</sup> NASH was diagnosed with at least grade one for steatosis, ballooning, and lobular inflammation.<sup>17</sup> Fibrotic NASH was defined as NASH,  $NAS \geq 4$ , and fibrosis stage  $\geq 2$ . The MAFALDA study has been approved by the Local Research Ethics Committee (no. 16/20) and it was conducted in accordance with the principles of the Declaration of Helsinki. All participants gave written informed consent to the study.

### *External validation cohorts*

**Helsinki cohort.** A total of 328 consecutive individuals with morbid obesity eligible for bariatric surgery and 42 consecutive individuals with body mass index (BMI)  $\geq 25$  kg/m<sup>2</sup> undergoing liver biopsy for suspected NASH were recruited between 2006 and 2018 at

Helsinki University Hospital, Helsinki, Finland. All participants were 18-75 years old, without history of alcohol abuse ( $\geq 30/20$  g/day in men/women), chronic viral hepatitis, and other causes of liver disease. A week before liver biopsy, participants underwent clinical examination and blood sampling as previously described.<sup>18</sup> Liver biopsies were scored according to NAS classification.<sup>16</sup> NASH was diagnosed when steatosis, lobular inflammation, and ballooning each had at least one grade.<sup>19</sup> Fibrotic NASH was defined as NASH,  $NAS \geq 4$ , and fibrosis stage  $\geq 2$ . The study was approved by the Local Research Ethics Committee at Helsinki University Hospital. All participants gave written informed consent to the study.

**Liver Bible cohort.** A total of 947 consecutive individuals with dysmetabolism (at least three criteria among overweight [BMI  $>25$  kg/m<sup>2</sup>], hypertension [ $>130/85$  mmHg or use of medication], hyperglycemia [ $>100$  mg/dL], low high-density lipoprotein [HDL] cholesterol [ $<45/55$  mg/dL in men/women], and increased triglycerides [ $>150$  mg/dL]) were recruited from July 2019 to July 2021 at the Transfusion Center, Fondazione Ca' Granda Hospital, Milan, Italy.<sup>20,21</sup> All participants were 18-65 years old, without history of alcohol abuse ( $\geq 30/20$  g/day in men/women), chronic viral hepatitis, and other causes of liver disease, and were enrolled as part of a preventive medicine program among blood donors. Liver steatosis and fibrosis were non-invasively assessed by vibration-controlled transient elastography and controlled attenuation parameter (CAP) with FibroScan<sup>®</sup> (Echosens, Paris, France), which was performed at the time of biochemical tests. Individuals at-risk of fibrotic NASH were defined as those with FAST score  $>0.35$ .<sup>14</sup> The study was approved by the Local Research Ethics Committee at the Fondazione IRCCS Ca' Granda. All participants gave written informed consent to the study.

**UK Biobank cohort.** The UK Biobank is a large prospective cohort study recruiting approximately 500,000 participants (age 40-69 years) between 2006-2010 throughout the UK.<sup>22</sup> The UK Biobank study has been approved by the North West Multicenter Research

Ethics Committee (no. 11/NW/0274). All participants gave written informed consent to the study.

First, we selected unrelated UK Biobank participants of European ancestry based on our quality control pipeline which has been described in detail previously.<sup>20,23</sup> Next, we included in our analyses only individuals with BMI  $\geq 25$  kg/m<sup>2</sup> and/or with type 2 diabetes as defined elsewhere.<sup>24</sup>

Then, to assess the performance of our score for fibrotic NASH, we selected 5,368 individuals without chronic viral hepatitis and with liver magnetic resonance imaging (MRI) proton density fat fraction (PDFF) and iron-corrected T1 (cT1) measurements available.<sup>25,26</sup> Fibrotic NASH was defined as steatosis by PDFF  $>5.5\%$ ,<sup>25</sup> NASH by cT1  $>800$  msec,<sup>27</sup> and significant fibrosis by Fibrosis-4 (FIB-4) index  $\geq 1.3$ .<sup>28</sup>

Finally, to assess the performance of our score for incident severe liver disease (SLD),<sup>24</sup> after excluding participants with MRI data available, we selected 305,745 individuals without liver disease at baseline and estimated those who developed SLD prospectively. Detailed information about the UK Biobank methods is provided in supplementary material.

## Statistical analyses

The score was developed based on 264 morbidly obese individuals in the derivation cohort and internally validated using a bootstrapping stepwise logistic regression model (2000 bootstrap samples). A total of 15 predictors were included in the model: age, gender, BMI, waist circumference, glucose, hemoglobin A1c (HbA1c), total cholesterol, HDL cholesterol, triglycerides, aspartate aminotransferase (AST), alanine aminotransferase (ALT), gamma glutamyltransferase (GGT), platelet count, albumin, and total bilirubin. Logarithmic transformation was considered for continuous variables to improve the normality of distribution. Two (0.8%) individuals were removed from the analysis due to missing values.

The score was derived based on the final predictors and the corresponding regression coefficients. Performance for fibrotic NASH was assessed by the area under the receiver operating characteristic curve (AUROC) in the derivation and validation cohorts. Rule-out and rule-in cut-offs were derived in the derivation cohort based on sensitivity  $\geq 0.89$  and specificity  $\geq 0.90$ , respectively. Cut-off based on the maximal sum of sensitivity and specificity (Youden index) was also determined. At each cut-off, sensitivity, specificity, positive predictive value (PPV), and negative predictive value (NPV) were computed together with 95% confidence interval (CI). AUROCs were compared using the DeLong test. Calibration was assessed in the derivation cohort using Hosmer-Lemeshow goodness of fit test and calibration plot. Performance for incident SLD in the UK Biobank was estimated by AUROC of Cox proportional hazards models. Statistical analyses were performed using the software R, version 4.0.4 (R Foundation for Statistical Computing, Vienna, Austria).

## Results

### *Clinical characteristics of derivation and external validation cohorts*

Clinical characteristics of derivation and external validation cohorts are shown in Table 1. The two histological cohorts (MAFALDA and Helsinki cohorts) were well matched for age and gender, while the Liver Bible and UK Biobank cohorts had higher mean age and higher rate of men. Biochemical parameters were similar across the cohorts. The Liver Bible cohort had the highest rate of hypertension (74% vs 41-63%), whereas the Helsinki cohort had the highest rate of type 2 diabetes (38% vs 4-16%). Biopsy-proven NASH was diagnosed in 42% individuals of the derivation cohort and in 12% individuals of the Helsinki cohort. Fibrotic NASH was reported in 20% individuals of the derivation cohort and in 2-5% individuals of the external validation cohorts.

*Development of a prediction model for fibrotic NASH*

Bootstrapping stepwise logistic regression analysis identified three final independent predictors of fibrotic NASH: AST, HDL cholesterol, and HbA1c. Based on the corresponding regression coefficients, the following index—the Fibrotic NASH Index (FNI)—was derived:

$$FNI = \frac{e^{(-10.33+2.54 \times \ln AST [U/L] + 3.86 \times \ln HbA1c [\%] - 1.66 \times \ln HDL [mg/dL])}}{1 + e^{(-10.33+2.54 \times \ln AST [U/L] + 3.86 \times \ln HbA1c [\%] - 1.66 \times \ln HDL [mg/dL])}}$$

The FNI is a predicted probability score and ranges from 0 to 1. As an example, an individual with a FNI of 0.10 would have a 10% predicted probability of fibrotic NASH (NASH + NAS $\geq$ 4 + F $\geq$ 2). The FNI can be easily calculated on the following website: <https://fniscore.github.io/>.

In the derivation cohort, the performance of FNI for fibrotic NASH estimated by AUROC was 0.78 (95% CI 0.71-0.85) with satisfactory calibration of predicted probabilities (Figure 1). In the external validation cohorts, AUROCs ranged from 0.80 to 0.95 (Table 2). In the derivation cohort, cut-off for sensitivity  $\geq$ 0.89 (rule-out zone) was 0.10, with a NPV of 0.93. Cut-off for specificity  $\geq$ 0.90 (rule-in zone) was 0.33, with a PPV of 0.57 (Table 2). When applying these cut-offs to the external validation cohorts, at the rule-out cut-off of 0.10, sensitivity ranged from 0.87 to 1, with a NPV between 0.99 and 1; at the rule-in cut-off of 0.33, specificity ranged from 0.73 to 0.98, with a PPV between 0.12 and 0.49 (Table 2).

The performance of FNI and FIB-4 for fibrotic NASH was compared in derivation and two external validation cohorts (Figure 2, Table 2). Corresponding AUROCs were higher for FNI in the derivation and Liver Bible cohorts (p=0.001 and 3.08x10<sup>-08</sup>, respectively), whereas no difference was found between the two scores in the Helsinki cohort (p=0.85).

*Performance for incident severe liver disease*

During a median (interquartile range) follow-up of 9.0 (8.3-9.7) years, there were 1,054 individuals who developed SLD, including 928 with cirrhosis and/or decompensated liver disease, 126 with hepatocellular carcinoma, and 18 that underwent liver transplantation. Death from SLD occurred in 542 individuals.

The AUROC of FNI for incident SLD was 0.77 (95% CI 0.75-0.79) which was higher than the AUROC of FIB-4 (0.75, 95% CI 0.73-0.77;  $p=0.03$ ) (Figure 3). At the FNI cut-off of 0.10 (rule-out zone), sensitivity was 0.81 vs 0.75 of FIB-4 cut-off of 1.3, with a NPV of 1 for both scores (Table 3). A FNI  $>0.10$  conferred a nearly four-fold increased risk of incident SLD (adjusted hazard ratio [HR] 3.55, 95% CI 2.96-4.25;  $p<0.001$ ), which was higher than the increase in risk conferred by a FIB-4  $\geq 1.3$  (adjusted HR 3.0, 95% CI 2.54-3.54;  $p<0.001$ ) (Table 3).

## Discussion

In this study, we develop and validate the FNI, a novel and simple non-invasive score for detecting fibrotic NASH among individuals at high risk for NAFLD, namely those with overweight/obesity, type 2 diabetes, and metabolic syndrome. Notably, this is the first score tailored for fibrotic NASH based on routine laboratory tests, namely AST, HDL cholesterol, and HbA1c.

We started by examining the MAFALDA, a cross-sectional cohort of morbidly obese individuals in whom the diagnosis of fibrotic NASH was assessed by histology. In MAFALDA, we generated and internally validated a prediction model for fibrotic NASH by using a bootstrapping stepwise regression analysis. We found that AST, HDL cholesterol, and HbA1c were the best independent predictors of this condition. Consistently, elevated AST is a well-known biomarker of liver fibrosis,<sup>29</sup> whereas HbA1c and HDL cholesterol are both flagging the presence of dysmetabolism, given their correlation with insulin resistance and impaired

glucose tolerance.<sup>30,31</sup> In the derivation cohort, this model showed good success in predicting fibrotic NASH with an AUROC of 0.78 (0.71-0.85).

Next, we validated our prediction model in three independent external cohorts comprising individuals with overweight/obesity, type 2 diabetes, and metabolic syndrome. In these cohorts, irrespective of the methodology used to assess fibrotic NASH (liver biopsy, vibration-controlled transient elastography including CAP, or liver MRI), the performance of our score was very good with an AUROC range of 0.80-0.95. Notably, one of the external validation cohorts included more than 5,000 high-risk individuals from the UK Biobank.

Existing non-invasive clinical scores are focused on detecting advanced fibrosis, the most relevant predictor of mortality in NAFLD.<sup>10</sup> However, the degree of liver inflammation is a crucial driver of liver damage.<sup>32</sup> In this scenario, the presence of NASH with significant activity ( $NAS \geq 4$ ) has been identified as an essential condition for enrollment in NAFLD clinical trials.<sup>9</sup> This is mainly due to two reasons: 1) the histological response to drug therapy is higher in individuals with an active disease,<sup>33</sup> and 2) the inclusion of individuals with fibrotic NASH is more likely to ensure that the estimated number of clinical events will occur during the study observation period. Along this line, the presence of an active liver disease is expected to be included among the prescribing criteria of new emerging pharmacotherapies once they become available. Within this context, FNI may also be used as a longitudinal biomarker to non-invasively monitor the effectiveness of interventional strategies for NASH.

Very recently, three non-invasive scores have been generated to detect fibrotic NASH: two blood-based, MACK-3<sup>12</sup> (AST, glucose, insulin, cytokeratin 18) and NIS4<sup>13</sup> (miR-34a-5p, alpha-2 macroglobulin, YKL-40, HbA1c), and the transient elastography-based FAST score (AST, CAP, liver stiffness measurement).<sup>14</sup> The accuracy of these scores for fibrotic NASH was good and comparable to that of FNI, with AUROCs ranging from 0.80 to 0.85. However, these scores are based on blood/instrumental tests relatively expensive and/or not widely



available in primary care. Consequently, although FibroScan<sup>®</sup> is increasingly used worldwide, the screening for fibrotic NASH in large at-risk populations in primary care using these scores appears to be impractical and costly.

Would the FNI score be a viable option to screen for fibrotic NASH in large at-risk populations? Within this context, the risk stratification pathway recently proposed by the European Association for the Study of the Liver (EASL) recommended a FIB-4 cut-off <1.3 to rule out those not needing a referral to the liver specialist.<sup>34</sup> In individuals with metabolic risk factors from the general population, a FNI value  $\leq 0.10$  (rule-out zone) would exclude the presence of fibrotic NASH with high sensitivity and high NPV. Importantly, in both derivation and external validation cohorts, at least one out five individuals belonged to the rule-out zone, thus avoiding further referral to the liver specialist. Notably, the FNI cut-off of 0.10 had a higher sensitivity for fibrotic NASH as compared to the FIB-4 cut-off of 1.3. Consequently, in the general population with metabolic risk factors, the risk stratification using FNI as opposed to FIB-4 would allow to miss fewer individuals with fibrotic NASH. Importantly, these individuals may require and benefit the most from a prompt intervention in liver clinics due to the presence of an active disease at higher risk of liver-related outcomes. Consistently, we found that, during a median follow-up of 9 years, FNI was more accurate than FIB-4 for predicting incident SLD. However, it is fair to say that FIB-4 has been generated to assess liver fibrosis and the 1.3 cut-off is used to rule out advanced fibrosis rather than progressive NASH.<sup>34</sup>

Conversely, PPV for fibrotic NASH was rather low in the FNI rule-in zone. This is mainly due to the low prevalence of fibrotic NASH in the cohorts used in our study. Indeed, the performance of any disease predictive model is highly dependent on the prevalence of the disease in the referral population.<sup>34</sup> Indeed, although FNI was generated and validated in individuals at high risk for NAFLD, the prevalence of fibrotic NASH in these individuals was

relatively low. However, the performance of the FNI rule-in cut-off is expected to be higher in individuals from secondary/tertiary care centers where the prevalence of advanced fibrosis is higher. Further studies are warranted to assess the performance of FNI in these settings.

Collectively, our data support that FNI may be useful for ruling out rather than diagnosing fibrotic NASH in at-risk individuals in primary healthcare and diabetology/endocrinology clinics. Individuals with indeterminate and positive results would deserve referral to liver clinic for further investigations and follow-up.

The present study has several strengths. First, we used a large and well-characterized derivation cohort with liver biopsy data available. Second, we developed for the first time a predictive model for fibrotic NASH based on routine and widely available laboratory tests which are commonly evaluated in individuals with metabolic risk factors. Third, we validated our findings in three independent and large external validation cohorts. Among them, one included more than 5,000 individuals from the UK Biobank.

Our study has also some limitations. First, FNI has been specifically designed and validated in individuals with dysmetabolism and not in those referred for NAFLD in liver secondary/tertiary care settings. Therefore, its performance should be further verified before being used in this context. Second, we could not compare FNI with other non-invasive blood-based scores for fibrotic NASH, such as MACK-3, because they were not available in most cohorts.

In conclusion, we developed and validated the FNI, an accurate, simple, and affordable non-invasive score for fibrotic NASH based on routine laboratory tests, namely AST, HDL cholesterol, and HbA1c. This score may help clinicians identify at-risk individuals in primary healthcare and diabetology/endocrinology clinics who require a referral to the liver specialist.

## **Acknowledgements**

We thank the staff and the participants of the MAFALDA, Helsinki, Liver Bible, and UK Biobank studies. We thank Dr. Chiara Tavaglione for creating the website logo. This research has been conducted using the UK Biobank resource (application #37142).

## References

1. Younossi ZM. Non-alcoholic fatty liver disease - A global public health perspective. *J Hepatol.* 2019;70(3):531-544.
2. Eslam M, Valenti L, Romeo S. Genetics and epigenetics of NAFLD and NASH: Clinical impact. *J Hepatol.* 2018;68(2):268-279.
3. Romeo S, Sanyal A, Valenti L. Leveraging Human Genetics to Identify Potential New Treatments for Fatty Liver Disease. *Cell Metab.* 2020;31(1):35-45.
4. Younossi Z, Henry L. Contribution of Alcoholic and Nonalcoholic Fatty Liver Disease to the Burden of Liver-Related Morbidity and Mortality. *Gastroenterology.* 2016;150(8):1778-1785.
5. Trépo E, Valenti L. Update on NAFLD genetics: From new variants to the clinic. *J Hepatol.* 2020;72(6):1196-1209.
6. Chalasani N, Younossi Z, Lavine JE, et al. The diagnosis and management of nonalcoholic fatty liver disease: Practice guidance from the American Association for the Study of Liver Diseases. *Hepatology.* 2018;67(1):328-357.
7. (EASL) EAftSotL, (EASD) EAftSoD, (EASO) EAftSoO. EASL-EASD-EASO Clinical Practice Guidelines for the management of non-alcoholic fatty liver disease. *J Hepatol.* 2016;64(6):1388-1402.
8. Boursier J, Tsochatzis EA. Case-finding strategies in non-alcoholic fatty liver disease. *JHEP Rep.* 2021;3(2):100219.
9. Sanyal AJ, Brunt EM, Kleiner DE, et al. Endpoints and clinical trial design for nonalcoholic steatohepatitis. *Hepatology.* 2011;54(1):344-353.
10. Dulai PS, Singh S, Patel J, et al. Increased risk of mortality by fibrosis stage in nonalcoholic fatty liver disease: Systematic review and meta-analysis. *Hepatology.* 2017;65(5):1557-1565.
11. Castera L, Forns X, Alberti A. Non-invasive evaluation of liver fibrosis using transient elastography. *J Hepatol.* 2008;48(5):835-847.
12. Boursier J, Anty R, Vonghia L, et al. Screening for therapeutic trials and treatment indication in clinical practice: MACK-3, a new blood test for the diagnosis of fibrotic NASH. *Aliment Pharmacol Ther.* 2018;47(10):1387-1396.
13. **Harrison SA, Ratzliff V**, Boursier J, et al. A blood-based biomarker panel (NIS4) for non-invasive diagnosis of non-alcoholic steatohepatitis and liver fibrosis: a prospective derivation and global validation study. *Lancet Gastroenterol Hepatol.* 2020;5(11):970-985.
14. Newsome PN, Sasso M, Deeks JJ, et al. FibroScan-AST (FAST) score for the non-invasive identification of patients with non-alcoholic steatohepatitis with significant activity and fibrosis: a prospective derivation and global validation study. *Lancet Gastroenterol Hepatol.* 2020;5(4):362-373.

15. Tavaglione F, De Vincentis A, Bruni V, et al. Accuracy of Controlled Attenuation Parameter for Assessing Liver Steatosis in Individuals With Morbid Obesity Before Bariatric Surgery. *Liver Int.* 2021.
16. Kleiner DE, Brunt EM, Van Natta M, et al. Design and validation of a histological scoring system for nonalcoholic fatty liver disease. *Hepatology.* 2005;41(6):1313-1321.
17. Brunt EM, Janney CG, Di Bisceglie AM, Neuschwander-Tetri BA, Bacon BR. Nonalcoholic steatohepatitis: a proposal for grading and staging the histological lesions. *Am J Gastroenterol.* 1999;94(9):2467-2474.
18. **Luukkonen PK, Qadri S**, Lehtimäki TE, et al. The PNPLA3-I148M Variant Confers an Antiatherogenic Lipid Profile in Insulin-resistant Patients. *J Clin Endocrinol Metab.* 2021;106(1):e300-e315.
19. Bedossa P, Consortium FP. Utility and appropriateness of the fatty liver inhibition of progression (FLIP) algorithm and steatosis, activity, and fibrosis (SAF) score in the evaluation of biopsies of nonalcoholic fatty liver disease. *Hepatology.* 2014;60(2):565-575.
20. **Bianco C, Jamialahmadi O, Pelusi S**, et al. Non-invasive stratification of hepatocellular carcinoma risk in non-alcoholic fatty liver using polygenic risk scores. *J Hepatol.* 2021;74(4):775-782.
21. Valenti L, Pelusi S, Bianco C, et al. Definition of Healthy Ranges for Alanine Aminotransferase Levels: A 2021 Update. *Hepatol Commun.* 2021;5(11):1824-1832.
22. Sudlow C, Gallacher J, Allen N, et al. UK biobank: an open access resource for identifying the causes of a wide range of complex diseases of middle and old age. *PLoS Med.* 2015;12(3):e1001779.
23. Jamialahmadi O, Mancina RM, Ciociola E, et al. Exome-Wide Association Study on Alanine Aminotransferase Identifies Sequence Variants in the GPAM and APOE Associated With Fatty Liver Disease. *Gastroenterology.* 2021.
24. **Tavaglione F, De Vincentis A**, Jamialahmadi O, et al. Inborn and acquired risk factors for severe liver disease in Europeans with type 2 diabetes from the UK Biobank. *JHEP Rep.* 2021;3(3):100262.
25. Wilman HR, Kelly M, Garratt S, et al. Characterisation of liver fat in the UK Biobank cohort. *PLoS One.* 2017;12(2):e0172921.
26. Mojtahed A, Kelly CJ, Herlihy AH, et al. Reference range of liver corrected T1 values in a population at low risk for fatty liver disease—a UK Biobank sub-study, with an appendix of interesting cases. *Abdom Radiol (NY).* 2019;44(1):72-84.
27. **Parisinos CA, Wilman HR**, Thomas EL, et al. Genome-wide and Mendelian randomisation studies of liver MRI yield insights into the pathogenesis of steatohepatitis. *J Hepatol.* 2020;73(2):241-251.
28. Sterling RK, Lissen E, Clumeck N, et al. Development of a simple noninvasive index to predict significant fibrosis in patients with HIV/HCV coinfection. *Hepatology.* 2006;43(6):1317-1325.
29. Botros M, Sikaris KA. The de Ritis ratio: the test of time. *Clin Biochem Rev.* 2013;34(3):117-130.
30. Manandhar B, Cochran BJ, Rye KA. Role of High-Density Lipoproteins in Cholesterol Homeostasis and Glycemic Control. *J Am Heart Assoc.* 2020;9(1):e013531.
31. Singh B, Saxena A. Surrogate markers of insulin resistance: A review. *World J Diabetes.* 2010;1(2):36-47.

32. Marengo A, Jouness RI, Bugianesi E. Progression and Natural History of Nonalcoholic Fatty Liver Disease in Adults. *Clin Liver Dis.* 2016;20(2):313-324.
33. Ratzu V, Harrison SA, Francque S, et al. Elafibranor, an Agonist of the Peroxisome Proliferator-Activated Receptor- $\alpha$  and - $\delta$ , Induces Resolution of Nonalcoholic Steatohepatitis Without Fibrosis Worsening. *Gastroenterology.* 2016;150(5):1147-1159.e1145.
34. easloffice@easloffice.eu EAftSotLEa, Panel CPG, Chair:, representative: EGB, members: P. EASL Clinical Practice Guidelines on non-invasive tests for evaluation of liver disease severity and prognosis - 2021 update. *J Hepatol.* 2021;75(3):659-689.

Author names in bold designate shared co-first authorship.

Journal Pre-proof

**Table 1. Clinical characteristics of derivation and external validation cohorts.**

	<b>MAFALDA</b>	<b>Helsinki</b>	<b>Liver Bible</b>	<b>MRI UK Biobank</b>
n	264	370	947	5,368
<b><i>Clinical data</i></b>				
Age, years	43.4 (10.1)	49.1 (9.5)	53.9 (6.3)	55.3 (7.3)
Women, n (%)	195 (74%)	262 (71%)	157 (17%)	2,406 (45%)
BMI, kg/m <sup>2</sup>	41.6 (4.4)	42.3 (7.7)	28.5 (3.1)	28.8 (3.4)
<b><i>Metabolic profile</i></b>				
Glucose, mg/dL	98 (92-106)	105 (96-114)	94 (87-103)	88 (83-95)
HbA1c, %	5.5 (5.3-5.9)	5.7 (5.4-6.2)	5.4 (5.2-5.6)	5.3 (5.1-5.6)
Cholesterol, mg/dL	179.1 (31.2)	163.8 (41.6)	202.1 (32.3)	224 (43)
HDL cholesterol, mg/dL	45.8 (9.8)	46.2 (12.1)	45.3 (10.1)	54 (12)
LDL cholesterol, mg/dL	121.3 (30.1)	99.1 (35.1)	123.3 (28.9)	143 (35)
Triglycerides, mg/dL	122 (90.8-164.2)	108 (80-145)	159 (114-199)	142 (106-204)
<b><i>Liver function tests</i></b>				
ALT, U/L	30.5 (20-41)	32 (22-46)	26 (21-35)	22.1 (16.7-30)
AST, U/L	26 (22-32)	29 (24-36)	23 (19-27)	24.8 (21.3-29.2)
GGT, U/L	25 (17.5-34)	31 (20-52)	23 (17-32)	28.2 (19.9-42.8)
Bilirubin, mg/dL	0.5 (0.4-0.7)	-	-	0.5 (0.4-0.6)
Albumin, g/dL	4.2 (0.3)	3.8 (0.4)	-	4.5 (0.3)
Platelets, 10e3/uL	282.7 (63.4)	252.7 (63.0)	234.7 (51.5)	250.8 (56.6)
<b><i>Comorbidities</i></b>				
Hypertension, n (%)	109 (41%)	232 (63%)	699 (74%)	2,236 (42%)
Type 2 diabetes, n (%)	41 (16%)	141 (38%)	35 (4%)	405 (8%)
<b><i>Liver histology</i></b>				
Steatosis grade, n (%)			NA	NA
0	88 (33%)	135 (37%)		

1	93 (35%)	153 (41%)
2	48 (18%)	51 (14%)
3	35 (13%)	31 (8%)
Lobular inflammation grade, n (%)		
0	108 (41%)	312 (84%)
1	143 (54%)	48 (13%)
2	13 (5%)	10 (3%)
3	0 (0%)	0 (0%)
Ballooning grade, n (%)		
0	22 (8%)	318 (86%)
1	176 (67%)	39 (11%)
2	66 (25%)	13 (4%)
NASH, n (%)	110 (42%)	45 (12%)
NAS $\geq$ 4, n (%)	109 (41%)	42 (11%)
NASH + NAS $\geq$ 4 +F $\geq$ 2, n (%)	54 (20%)	17 (5%)
Fibrosis staging, n (%)		
0	80 (30%)	215 (58%)
1	117 (44%)	121 (33%)
2	59 (22%)	18 (5%)
3	7 (3%)	10 (3%)
4	1 (0%)	6 (2%)

Continuous variables are shown as mean (SD) or median (IQR) as appropriate. Categorical variables are shown as number (percentage).

*Abbreviations:* ALT, alanine aminotransferase; AST, aspartate aminotransferase; BMI, body mass index; GGT, gamma glutamyltransferase; HbA1c, hemoglobin A1c; HDL, high-density lipoprotein; LDL, low-density lipoprotein; MRI, magnetic resonance imaging; NA, not available; NAS, NAFLD Activity Score; NASH, non-alcoholic steatohepatitis.

**Table 2. Diagnostic performance of FNI and FIB-4 for fibrotic NASH and cut-off values in derivation and external validation cohorts.**

	<b>MAFALDA</b>	<b>Helsinki</b>	<b>Liver Bible</b>	<b>MRI UK Biobank</b>
N	264	370	947	5,368
Fibrotic NASH definition	NASH + NAS $\geq$ 4 + F $\geq$ 2	NASH + NAS $\geq$ 4 + F $\geq$ 2	FAST score >0.35	PDFF>5.5% + cT1>800 msec + FIB-4 $\geq$ 1.3
Fibrotic NASH, n (%)	54 (20%)	17 (5%)	37 (4%)	118 (2%)
FNI AUROC (95% CI)	0.78 (0.71-0.85)	0.83 (0.72-0.95)	0.95 (0.92-0.98)	0.80 (0.75-0.83)
FIB-4 AUROC (95% CI)	0.63 (0.54-0.71)	0.82 (0.72-0.92)	0.68 (0.58-0.78)	NA
<b>FNI <math>\geq</math>0.30 (Youden index)</b>				
n (%)	59 (22.3%)	124 (33.5%)	52 (5.5%)	433 (8.1%)
Sensitivity	0.57	0.88	0.62	0.39
Specificity	0.87	0.69	0.97	0.93
PPV	0.53	0.12	0.44	0.11
NPV	0.89	0.99	0.98	0.99
<b>FNI <math>\leq</math>0.10 (Rule-out zone)</b>				
n (%)	83 (31.4%)	77 (20.8%)	464 (50%)	2,526 (47.1%)
Sensitivity	0.89	0.94	1	0.87
Specificity	0.37	0.22	0.51	0.54
PPV	0.27	0.06	0.08	0.04
NPV	0.93	0.99	1	0.99
<b>FNI <math>\geq</math>0.33 (Rule-in zone)</b>				
n (%)	49 (18.6%)	109 (29.4%)	41 (4.3%)	337 (6.3%)
Sensitivity	0.52	0.82	0.54	0.34
Specificity	0.90	0.73	0.98	0.94
PPV	0.57	0.13	0.49	0.12
NPV	0.88	0.99	0.98	0.98
<b>FIB-4 <math>\geq</math>1.3</b>				
n (%)	21 (8.0%)	111 (30.0%)	216 (22.8%)	NA
Sensitivity	0.11	0.76	0.53	NA
Specificity	0.93	0.72	0.78	NA
PPV	0.29	0.12	0.09	NA
NPV	0.80	0.98	0.98	NA



Optimal cut-offs for fibrotic NASH were obtained in the derivation cohort based on the maximal sum of sensitivity and specificity (Youden index), on sensitivity  $\geq 89\%$  (rule-out zone), and on specificity  $\geq 90\%$  (rule-in zone).

*Abbreviations:* AUROC, area under the receiver operating characteristic curve; CI, confidence interval; cT1, iron-corrected T1; FAST, FibroScan-AST score; FIB-4, fibrosis-4 index; FNI, fibrotic NASH index; MRI, magnetic resonance imaging; NA, not applicable; NAS, NAFLD activity score; NASH, non-alcoholic steatohepatitis; NPV, negative predictive value; PDFF, proton density fat fraction; PPV, positive predictive value; NA, not applicable.

Journal Pre-proof

**Table 3. Diagnostic performance of FNI and FIB-4 for incident severe liver disease in the UK Biobank (n=305,745).**

	<b>FNI</b>	<b>FIB-4</b>
AUROC (95% CI)	0.77 (0.75-0.79)	0.75 (0.73-0.77)
Cut-off	>0.10	≥1.3
n (%)	127,460 (51.1%)	119,658 (43.0%)
HR (95% CI)	4.21 (3.55-5.01)*	4.10 (3.54-4.75)#
aHR (95% CI)	3.55 (2.96-4.25)*	3.0 (2.54-3.54)#
Sensitivity	0.81	0.75
Specificity	0.49	0.57
PPV	0.01	0.01
NPV	1	1

HRs with 95% CIs were calculated by Cox proportional hazards models. Age, gender, and alcohol intake (g/day) were included in the multivariable models.

\*p<0.001 vs FNI ≤0.10

#p<0.001 vs FIB-4 <1.3

*Abbreviations:* aHR, adjusted HR; AUROC, area under the receiver operating characteristic curve; CI, confidence interval; FIB-4, fibrosis-4 index; FNI, fibrotic NASH index; HR, hazard ratio; PPV, positive predictive value.

## Figure Legends

**Figure 1. Diagnostic performance of FNI for fibrotic NASH in the MAFALDA cohort (n=264).** (A) **ROC curve.** Numbers in brackets are 95% CI. (B) **Calibration plot.** The solid line represents the ideal calibration. The dashed line represents the calibration estimated using locally estimated scatterplot smoothing (Loess). The shaded area indicates 95% CI. Triangles represent sextiles of participants grouped by similar predicted risk. P value is calculated using Hosmer-Lemeshow goodness of fit test.

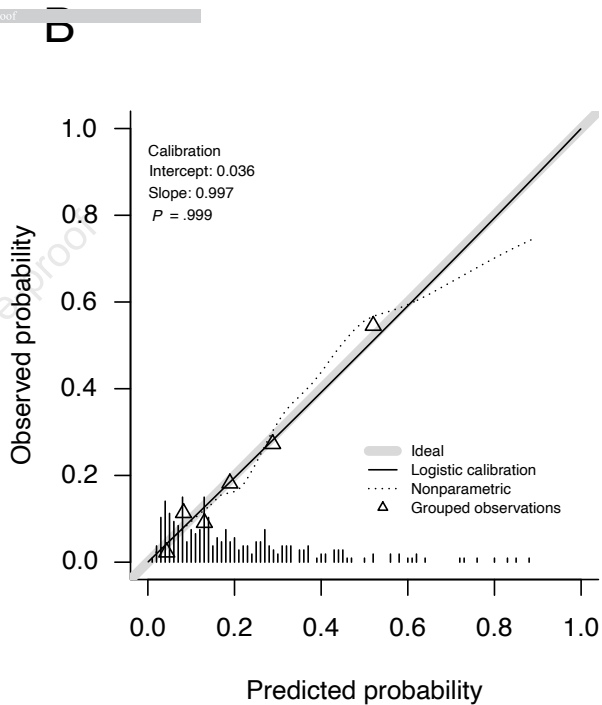
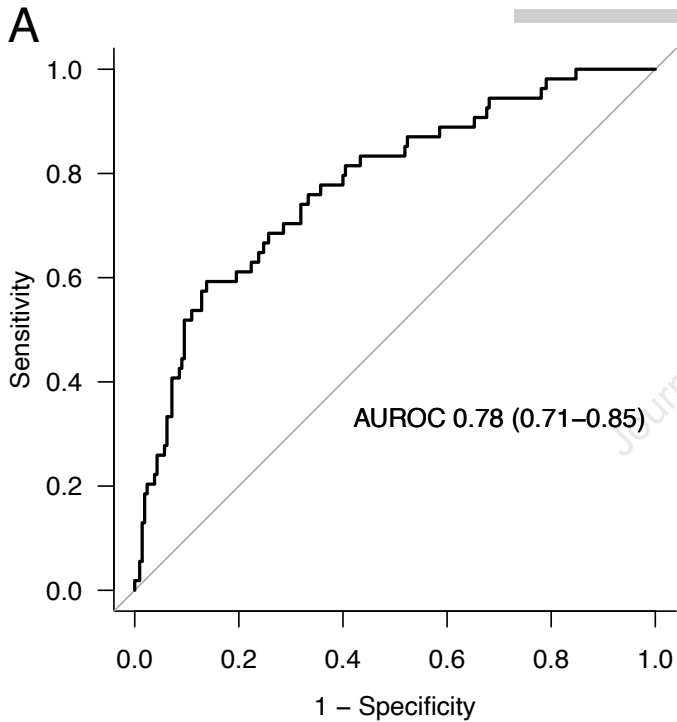
*Abbreviations:* AUROC, area under the receiver operating characteristic curve; FIB-4, Fibrosis-4 index; FNI, fibrotic NASH index.

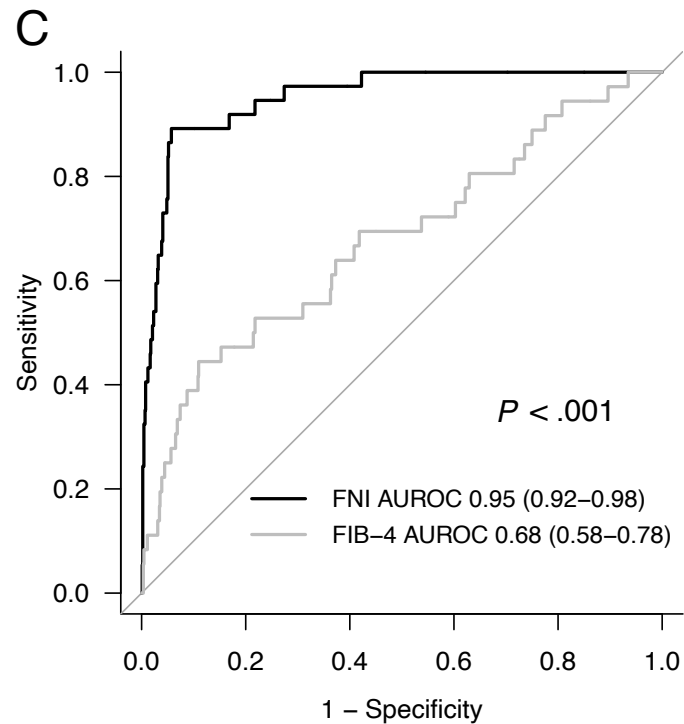
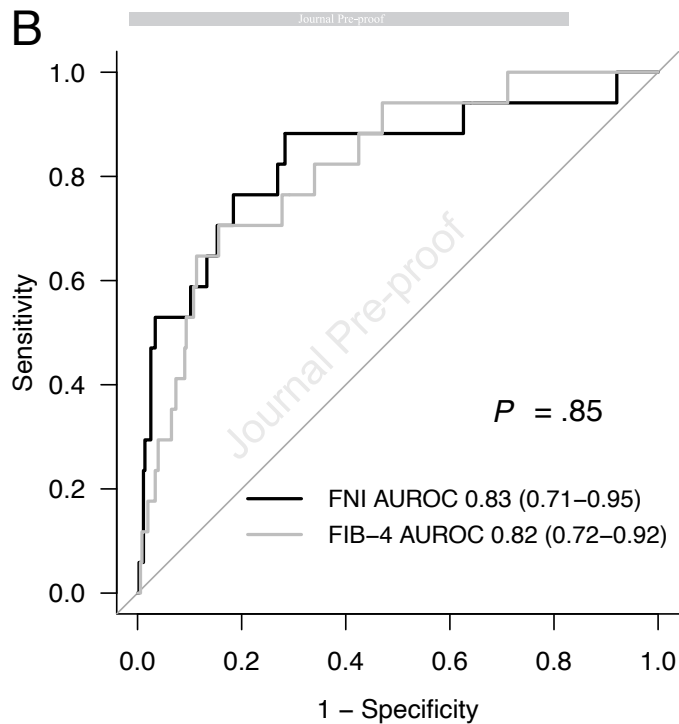
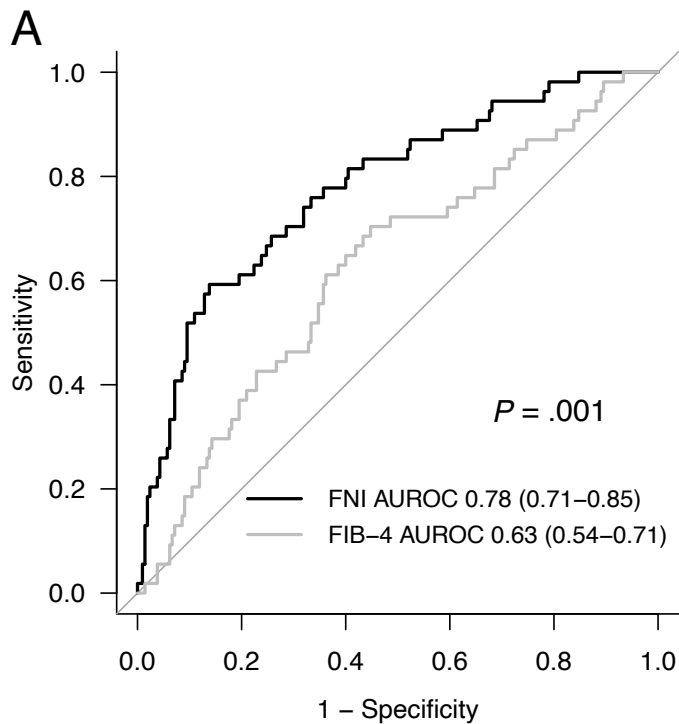
**Figure 2. ROC curves for fibrotic NASH by FNI and FIB-4 in the (A) MAFALDA cohort (n=264), (B) Helsinki cohort (n=370), and (C) Liver Bible cohort (n=947).** Numbers in brackets are 95% CI. P values are calculated using the DeLong test. P values <0.05 are considered statistically significant.

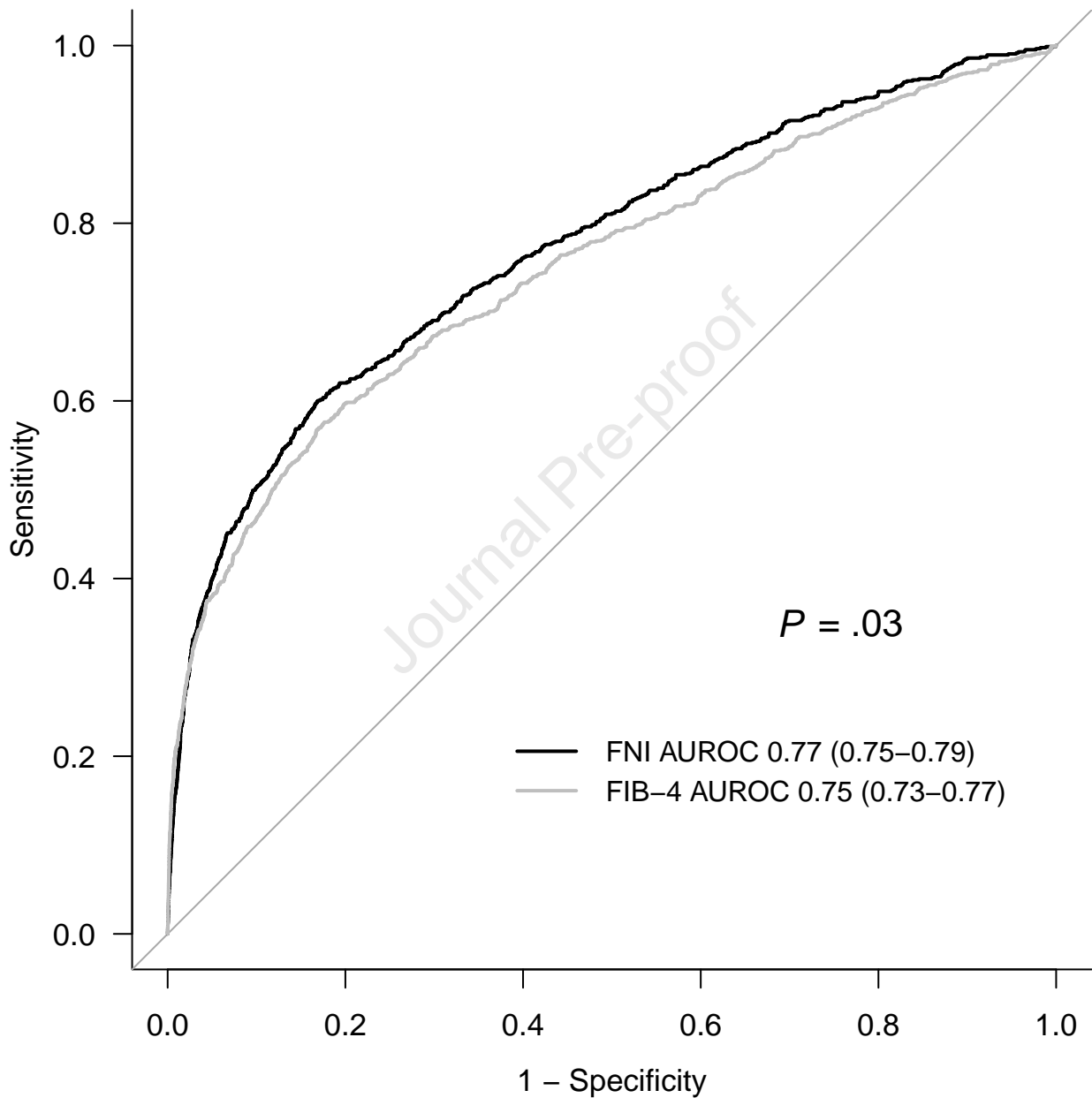
*Abbreviations:* AUROC, area under the receiver operating characteristic curve; FIB-4, Fibrosis-4 index; FNI, fibrotic NASH index.

**Figure 3. ROC curves for incident severe liver disease by FNI and FIB-4 in the UK Biobank (n=305,745).** Numbers in brackets are 95% CI. P values are calculated using the DeLong test. P values <0.05 are considered statistically significant.

*Abbreviations:* AUROC, area under the receiver operating characteristic curve; FIB-4, Fibrosis-4 index; FNI, fibrotic NASH index.







## SUPPLEMENTARY MATERIAL

### Development and Validation of a Score for Fibrotic Non-Alcoholic Steatohepatitis

Federica Tavaglione, Oveis Jamialahmadi, Antonio De Vincentis, Sami Qadri, Mohammad Erfan Mowlaei, Rosellina Margherita Mancina, Ester Ciociola, Simone Carotti, Giuseppe Perrone, Vincenzo Bruni, Ida Francesca Gallo, Dario Tuccinardi, Cristiana Bianco, Daniele Prati, Silvia Manfrini, Paolo Pozzilli, Antonio Picardi, Marco Caricato, Hannele Yki-Järvinen, Luca Valenti, Umberto Vespasiani-Gentilucci, Stefano Romeo

#### Table of Contents

<i>UK Biobank</i> .....	<b>2</b>
-------------------------	----------

*UK Biobank*

The UK Biobank is a large prospective cohort study recruiting approximately 500,000 participants (age 40-69 years) between 2006-2010 from 22 assessment centers throughout the UK.<sup>1</sup> Clinical information and laboratory data were collected using highly standardized procedures. Medical diagnoses were obtained through linkage of hospital admissions, death register, and cancer register from the National Health Service records (data-fields 41270, 40001, 40002, and 40006).

**MRI UK Biobank cohort.** To assess the performance of our score for fibrotic non-alcoholic steatohepatitis (NASH), we selected a total of 5,368 European individuals with overweight/obesity and/or type 2 diabetes, without chronic viral hepatitis (International Classification of Diseases 10th edition [ICD-10] B18-B19) from hospital admissions and death register, and with liver magnetic resonance imaging (MRI) proton density fat fraction (PDFF) and iron-corrected T1 (cT1) measurements available. Participants were scanned at the UK Biobank Imaging Centre in Cheadle (UK) using a Siemens 1.5T MAGNETOM Aera as described in detail elsewhere.<sup>2,3</sup> Briefly, a shortened modified look locker inversion (ShMOLLI) was used to quantify liver T1 and a multi echo-spoiled gradient-echo was used to quantify liver iron and fat. Data were analyzed using LiverMultiScan© Discover 4.0 software.

**Prospective UK Biobank cohort.** To assess the performance of our score for incident severe liver disease (SLD), we selected a total of 305,745 European individuals with overweight/obesity and/or type 2 diabetes, after excluding those with PDFF and cT1 measurements available. Baseline exclusion criteria were: 1) self-reported history or hospital diagnosis of chronic viral hepatitis, SLD, or other causes of liver disease (ICD-10 B18, B19, C22.0, E83.0, E83.1, I85.0, I85.9, K70.3, K70.4, K70.9, K71, K72.1, K72.9, K74.1, K74.2, K74.3, K74.4, K74.5, K74.6, K75.2, K75.3, K75.4, K75.8, K75.9, K76.6, K76.7, K76.8, K76.9, R18, Z94.4); 2) self-reported history or diagnosis from cancer register of liver cancer



(ICD-10 C22); 3) missing data for any score variable. SLD was defined as a composite diagnosis of cirrhosis, decompensated liver disease, hepatocellular carcinoma, and/or liver transplantation from hospital admissions, death register, and cancer register (ICD-10 C22.0, I85.0, I85.9, K70.3, K70.4, K72.1, K72.9, K74.1, K74.2, K74.6, K76.6, K76.7, Z94.4). Follow-up length was calculated from the date of baseline assessment visit up to the first date of SLD diagnosis, the date of death, or the date of end of follow-up for the assessment center attended (31 January 2018), whichever occurred first. Participants were excluded from the analyses if they received hospital diagnosis of competing liver diseases (ICD-10 B18, B19, E83.0, E83.1, K71, K74.3, K74.4, K74.5, K75.2, K75.3, K75.4, K75.8, K75.9) before the diagnosis of SLD.

## References

1. Sudlow C, Gallacher J, Allen N, et al. UK biobank: an open access resource for identifying the causes of a wide range of complex diseases of middle and old age. *PLoS Med.* 2015;12(3):e1001779.
2. Wilman HR, Kelly M, Garratt S, et al. Characterisation of liver fat in the UK Biobank cohort. *PLoS One.* 2017;12(2):e0172921.
3. Mojtahed A, Kelly CJ, Herlihy AH, et al. Reference range of liver corrected T1 values in a population at low risk for fatty liver disease-a UK Biobank sub-study, with an appendix of interesting cases. *Abdom Radiol (NY).* 2019;44(1):72-84.

## **What You Need to Know**

### **Background**

Given the large and increasing number of individuals with NAFLD, accurate and cost-effective non-invasive risk stratification tools for identifying fibrotic NASH are urgently needed.

### **Findings**

Herein, we developed the Fibrotic NASH Index (FNI), an accurate, simple, and affordable non-invasive score for fibrotic NASH based on routine laboratory tests, namely AST, HDL cholesterol, and HbA1c.

### **Implications for patient care**

FNI may be useful to rule out fibrotic NASH in at-risk individuals in primary healthcare and diabetology/endocrinology clinics. Additionally, FNI may help identify candidates for enrollment in NASH clinical trials reducing screening failures.