

Updated Integrated Analysis of the Efficacy and Safety of Entrectinib in Patients with *NTRK* Fusion-Positive Solid Tumors

George D. Demetri¹, Filippo De Braud², Alexander Drilon³, Salvatore Siena⁴, Manish R. Patel⁵, Byoung Chul Cho⁶, Stephen V. Liu⁷, Myung-Ju Ahn⁸, Chao-Hua Chiu⁹, Jessica J. Lin¹⁰, Koichi Goto¹¹, Jeeyun Lee⁸, Lyudmila Bazhenova¹², Thomas John¹³, Marwan Fakih¹⁴, Sant P. Chawla¹⁵, Rafal Dziadziuszko¹⁶, Takashi Seto¹⁷, Sebastian Heinzmann¹⁸, Bethany Pitcher¹⁹, David Chen²⁰, Timothy R. Wilson²⁰, and Christian Rolfo²¹

¹Dana-Farber Cancer Institute and Ludwig Center at Harvard Medical School, Boston, MA, USA. ²Department of Medical Oncology and Hematology, Fondazione IRCCS Istituto Nazionale dei Tumori, and University of Milan, Milan, Italy. ³Memorial Sloan Kettering Cancer Center, and Weill Cornell Medical College, New York, NY, USA. ⁴Niguarda Cancer Center, Grande Ospedale Metropolitano Niguarda, and Department of Oncology and Hemato-Oncology, Università degli Studi di Milano, Milan, Italy. ⁵University of Minnesota, Department of Medicine, Minneapolis, MN, USA. ⁶Yonsei Cancer Center, Seoul, Republic of Korea. ⁷Georgetown University, Washington, DC, USA. ⁸Division of Hematology-Oncology, Department of Medicine, Samsung Medical Center Sungkyunkwan University School of Medicine, Seoul, Republic of Korea. ⁹Department of Chest Medicine, Taipei Veterans General Hospital, Taipei, Taiwan. ¹⁰Massachusetts General Hospital, Boston, MA, USA. ¹¹National Cancer Center Hospital East, Kashiwa, Japan. ¹²University of California San Diego, San Diego, CA, USA. ¹³Peter MacCallum Cancer Center, and Olivia Newton-John Cancer Centre, Austin Health, Melbourne, Australia. ¹⁴City of Hope

Comprehensive Cancer Center, Duarte, CA, USA. ¹⁵Sarcoma Oncology Center, Santa Monica, CA, USA. ¹⁶Department of Oncology and Radiotherapy and Early Clinical Trials Unit, Medical University of Gdansk, Gdansk, Poland. ¹⁷National Hospital Organization Kyushu Cancer Center, Fukuoka, Japan. ¹⁸F. Hoffmann-La Roche Ltd, Basel, Switzerland. ¹⁹F. Hoffmann-La Roche Ltd, Mississauga, Canada. ²⁰Genentech Inc., South San Francisco, CA, USA. ²¹Center for Thoracic Oncology, Tisch Cancer Institute, Icahn School of Medicine at Mount Sinai, New York, NY, USA.

Running title: Entrectinib in *NTRK*+ solid tumors: updated efficacy/safety

Corresponding author: Christian Rolfo MD, PhD, MBA, Dr.hc, Center for Thoracic Oncology, Tisch Cancer Institute, Icahn School of Medicine at Mount Sinai, 1190 One Gustave L. Levy Place, New York, NY 10029, USA. Phone: + 1 (212) 842-7227; E-mail: christian.rolfo@mssm.edu

Conflicts of interest:

G.D.D. reports: consulting fees from M.J. Hennessey / OncLive, MEDSCAPE; advisory/consultancy for Roche/Genentech, Bayer, EMD-Serono, Loxo Oncology, Daiichi-Sankyo, WCG/Arsenal Capital, Blueprint Medicines, Merrimack Pharmaceuticals, PharmaMar, Pfizer, Novartis, Epizyme, AbbVie, GlaxoSmithKline, Ikena Therapeutics, Janssen, Mirati, ICON PLC, Ziopharm, Relay Therapeutics, CellCarta (formerly Caprion/HistoGeneX), McCann Health, ERASCA Pharmaceuticals, Synlogic, C4 Therapeutics, Kojin Therapeutics; research grant/funding (institution) from Roche/Genentech, Bayer, Loxo Oncology/Eli Lilly, Daiichi-Sankyo, Janssen, Pfizer, Novartis, Epizyme, AbbVie; shareholder / stockholder / stock options from Blueprint Medicines, G1 Therapeutics, CARIS Life

Sciences, Bessor Pharmaceuticals, ERASCA Pharmaceuticals, CHAMPIONS Oncology, Translate BIO, RELAY Therapeutics, CellCarta, Ikena Therapeutics, Kojin Therapeutics; is a member of the board of directors for Blueprint Medicines and Translate BIO; non-remunerated activities from Alexandria Real Estate Equities

F.dB. reports: advisory/consultancy for Bristol-Myers Squibb, Eli Lilly, Roche, Amgen, AstraZeneca, Istituto Gentili, Fondazione Internazionale Menarini, Octomet Oncology, Novartis, Merck Sharp & Dohme, Ignyta, Bayer, Noema, ACCMED, Dephaforum, Nadirex, Biotechspert, , Pfizer, Tiziana Life Sciences, Pierre Fabre; speaker bureau/expert testimony from Bristol-Myers Squibb, Roche, Merck Sharp & Dohme, Ignyta, Dephaforum, prIME Oncology, Pfizer, Biotechspert; research grant/funding (institution) from Roche, Novartis, Merck Sharp & Dohme Bristol-Myers Squibb, Pfizer, Kymab, Celgene, Tesaro; travel/accommodation/expenses from: Bristol-Myers Squibb, Roche, Celgene, Amgen

A.D. has received honoraria or worked on the advisory boards of Ignyta/Genentech/Roche, Loxo/Bayer/Lilly, Takeda/Ariad/Millennium, TP Therapeutics, AstraZeneca, Pfizer, Blueprint Medicines, Helsinn, Beigene, BergenBio, Hengrui Therapeutics, Exelixis, Tyra Biosciences, Verastem, MORE Health, Abbvie, 14ner/Elevation Oncology, Remedica Ltd., ArcherDX, Monopteros, Novartis, EMD Serono, Medendi, Liberum, Repare RX, Nuvalent, Merus, AXIS, Chugai Pharmaceuticals, mBrace, Harborside Nexus, RV More, Ology, Amgen, TouchIME, Janssen, and EPG Health; has received funding through his institution from Pfizer, Exelixis, GlaxoSmithKlein, Teva, Taiho, and PharmaMar; has received research support from Foundation Medicine; receives royalties from Wolters Kluwer; has received food/beverage support from Merck, Puma, Boehringer Ingelheim, and Merus; and has received CME honoraria from Medscape, OncLive, PeerVoice,

Physicians Education Resources, Targeted Oncology, Research to Practice, Axis, Peerview Institute, Paradigm Medical Communications, WebMD, MJH Life Sciences, Med Learning, Imedex, Answers in CME, EPG Health, JNCC/Harborside, Liberum, Remedica Ltd, and Clinical Care Options

S.S. reports: advisory/consultancy for Amgen, Payer, CheckMab, Celgene, Daiichi Sankyo, Incyte, Merck, Novartis, Roche, Seattle Genetics

M.R.P. reports: advisory/consultancy for Nektar Therapeutics; research grant/funding (self) from Merck, Vyriad, Fate Therapeutics

B.C.C. reports: advisory/consultancy for Novartis, AstraZeneca, Boehringer-Ingelheim, Roche, BMS, Ono, Yuhan, Pfizer, Eli Lilly, Janssen, Takeda, MSD, Janssen, Medpacto, Blueprint medicines, Kanaph Therapeutic Inc; research grant/funding (institution) from Novartis, Bayer, AstraZeneca, MOGAM Institute, Dong-A ST, Champions Oncology, Janssen, Yuhan, Ono, Dizal Pharma, MSD, Abbvie, Medpacto, GI-Innovation, Eli Lilly, Blueprint medicines; shareholder/stockholder/stock options from TheraCanVac Inc, Gencurix Inc, Bridgebio therapeutics, Kanaph Therapeutic Inc; licensing/royalties from Champions Oncology; and is an officer/member of the board of directors for Daan biotherapeutics

S.V.L. reports: advisory/consultancy for Amgen, AstraZeneca, Bayer, Beigene, Bristol-Myers Squibb, Daiichi Sankyo, Eisai, Elevation Oncology, Genentech/Roche, Guardant Health, Inivata, Janssen, Jazz Pharmaceuticals, Lilly, MSD, Novartis, Regeneron, Takeda, Turning Point Therapeutics; research grant/funding (institution) from Alkermes, Bayer, Blueprint, Bristol-Myers Squibb, Elevation Oncology,

Genentech, Lilly, Merck, Merus, Pfizer, Rain Therapeutics, RAPT, Turning Point Therapeutics

M.-J.A. reports: honoraria from AstraZeneca, Lilly, Takeda, Roche, MSD; advisory/consultancy for AstraZeneca, Lilly, Takeda, Roche, MSD, Merck, Boehringer Ingelheim, Ono Pharmaceutical, Bristol-Myers Squibb, and Alpha Pharmaceutical, Progeneer

C.-H.C. reports: honoraria from Pfizer, AstraZeneca/MedImmune, Boehringer Ingelheim, Bristol-Myers Squibb, Chugai Pharmaceutical, Eli Lilly, MSD, Novartis, Ono Pharmaceutical, and Roche; advisory/consultancy for AstraZeneca/MedImmune, Boehringer Ingelheim, Bristol-Myers Squibb, Chugai Pharmaceutical, MSD, Novartis, Ono Pharmaceutical, and Roche

J.J.L. reports: funding (institution) from Hengrui Therapeutics, Turning Point Therapeutics, Neon Therapeutics, Relay Therapeutics, Roche/Genentech, Pfizer, Bayer, Elevation Oncology, Novartis, Linnaeus Therapeutics; advisory role or consulting for Pfizer, C4 Therapeutics, Nuvalent, Boehringer Ingelheim, Turning Point Therapeutics, Blueprint Medicines, Elevation Oncology, Genentech, Bayer, Novartis; honoraria from Chugai Pharmaceutical; CME funding from OncLive, MedStar Health, Northwell Health; travel support from Pfizer

K.G. reports: honoraria from Astellas Pharma Inc., AstraZeneca, Boehringer Ingelheim, Bristol-Myers Squibb, Chugai Pharma, DAIICHI SANKYO Co., Ltd., Guardant Health Inc., IQVIA Services Japan K.K., Janssen Pharmaceutical K.K., Kyowa Hakko Kirin Co.,Ltd, Life Technologies, Lilly, MSD, Nippon Kayaku, Novartis, Ono Pharmaceutical, Otsuka Pharmaceutica, Pfizer, Taiho Pharmaceutical, Takeda; research grant/funding (institution) from Amgen Inc, Astellas Pharma, AstraZeneca,

Boehringer Ingelheim, Bristol-Myers Squibb, Chugai Pharma, Daiichi Sankyo, Eisai, Ignyta, Janssen, Kyowa Hakko Kirin, Life Technologies, Lilly, Loxo, MEDICAL & BIOLOGICAL LABORATORIES CO., LTD., Merck Serono, MSD, Novartis, Ono Pharmaceutical, Pfizer, Riken Genesis, Sumitomo Dainippon, Sysmex Corporation, Taiho Pharmaceutical, Takeda, Xcoo; advisory/consultancy for Amgen Inc, Otsuka Pharma

J.L. reports: advisory/consultancy for Oncologie, Seattle Genetics; research grant/funding (self) from Astra Zeneca, Eli Lilly & Company, Merck Sharp & Dohme

L.B. reports: advisory/consultancy for Genentech, BeyondSpring pharma,Astra Zeneca, BI, Takeda, Blueprint, Novartis; research grant/funding (self) from BeyondSpring pharma; Shareholder/stockholder/stock options from Epic Sciences

T.J. reports: honoraria from AstraZeneca, Roche, Merck, MSD; advisory boards for BMS, AstraZeneca, Boehringer-Ingelheim, Takeda, Pfizer, Novartis, Merck, Ignyta, and Roche

M.F. reports: honoraria from Amgen; advisory/consultancy for Array, Amgen, Pfizer, and Bayer Pharmaceuticals; member of speaker bureau for Amgen,Guardant360; research grant/funding (institution) from Amgen, Astra Zeneca, Novartis

S.P.C. reports: research grant/funding (self) from Advenchen Laboratories, Amgen, Bayer, Bristol-Myers-Squibb, Elevar Therapeutics, Five Prime Therapeutics, GlaxoSmithKline, Janssen Pharmaceutica, Karyopharm Therapeutics, NK Max America, Philogen, Roche, SpringWorks Therapeutics, Tyme Inc., US Biotest; shareholder/stakeholder/stock options from AADi Bioscience, Cellestia, Immix Biopharma

R.D. reports: advisory/consultancy for Roche, Foundation Medicine, Pfizer, AstraZeneca, CelonPharma, Merck, MSD, Regeneron, Takeda, Seattle Genetics, Novartis; travel/accommodation/expenses from Roche, AstraZeneca

T.S. reports: honoraria from Astellas Pharma, AstraZeneca, Bristol-Myers Squibb, Chugai Pharmaceutical, Daiichi Sankyo, Eli Lilly Japan, Kyowa Hakko Kirin, MSD, Nippon Boehringer Ingelheim, Novartis Pharma, Ono Pharmaceutical, Pfizer Japan, Taiho Pharmaceutical, Takeda Pharmaceutical, Thermo Fisher Scientific; research support from Abbvie, AstraZeneca, Bayer Yakuhin, Chugai Pharmaceutical, Daiichi Sankyo, Eli Lilly Japan, Kissei Pharmaceutical, LOXO Oncology, Merck Serono, MSD, Nippon, Boehringer Ingelheim, Novartis Pharma, Pfizer Japan, Takeda Pharmaceutical; is an employee of Precision Medicine Asia

S.H. and **B.P.** are employees of F. Hoffman-La Roche Ltd

D.C. and **T.R.W.** are employees of Genentech Inc and have equity in Roche

C.R. reports: advisory/consultancy for Archer, Inivata, Novartis, BMS, Eisai, Boston Pharmaceuticals and MD Serono; speaker role for Roche, Astra Zeneca, MSD and GuardantHealth; leader role for IASLC Educational Committee Deputy Chair and LATAM (IASLC) co-chair, ESO Scientific Committee Board, ISLB President, Educational Chair OLA; research support from Biomarkers and Guardant Health (research collaboration), Lung Cancer Research Foundation-Pfizer grant, American Cancer Society grant, PY30 and U54 NIH grants

Word count: 3551

Tables/Figures: 3/3

References: 24

Statement of translational relevance

In previous reports of an integrated analysis of three phase I/II trials, entrectinib yielded deep and durable overall and intracranial responses in 54 patients with *NTRK* fusion-positive solid tumors, including rare tumor types. We report updated results from this analysis with a longer follow-up and a larger patient cohort ($n = 121$). At clinical cutoff (August 31, 2020), the overall and intracranial efficacy of entrectinib were confirmed with response rate 61.2%, median DoR 20.0 months, median PFS 13.8 months and intracranial response rate 63.6% (in 11 patients with measurable CNS disease by blinded independent review). In line with previous reports, entrectinib had a manageable safety profile, with most treatment-related adverse events grade 1/2 and reversible. These results confirm data that supported the US (2019) and European (2020) approvals and inform physicians of the latest advances in the field of tumor-agnostic therapies, improving patient access to treatments tailored for their condition.

ABSTRACT

Purpose: Entrectinib potently inhibits TRKA/B/C and ROS1, and previously induced deep (objective response rate [ORR] 57.4%) and durable (median duration of response [DoR] 10.4 months) responses in adults with *NTRK* fusion-positive solid tumors from three phase I/II trials. This manuscript expands prior reports with additional patients and longer follow-up.

Patients and Methods: Patients with locally advanced/metastatic *NTRK* fusion-positive solid tumors and ≥ 12 months' follow-up were included. Primary endpoints were ORR and DoR by blinded independent central review (BICR); secondary endpoints included progression-free survival (PFS), intracranial efficacy, and safety. The safety-evaluable populations included all patients who had received ≥ 1 entrectinib dose.

Results: At clinical cutoff (August 31, 2020), the efficacy-evaluable population comprised 121 adults with 14 tumor types and ≥ 30 histologies. Median follow-up was 25.8 months; 61.2% of patients had a complete ($n = 19$) or partial response ($n = 55$). Median DoR was 20.0 months (95% CI, 13.0–38.2); median PFS 13.8 months (95% CI, 10.1–19.9). In 11 patients with BICR-assessed measurable CNS disease, intracranial ORR was 63.6% (95% CI, 30.8–89.1); median intracranial DoR was 22.1 (95% CI, 7.4–not estimable) months. The safety profile of entrectinib in adults and pediatric patients was aligned with previous reports. Most treatment-related adverse events (TRAEs) were grade 1/2 and manageable/reversible with dose modifications. TRAE-related discontinuations occurred in 8.3% of patients.

Conclusion: With additional clinical experience, entrectinib continues to demonstrate durable systemic and intracranial responses, and can address the

unmet need of a CNS-active treatment in patients with *NTRK* fusion-positive solid tumors.

Keywords: Entrectinib; *NTRK*; TRK; gene fusion; tyrosine kinase inhibitor; targeted cancer therapy; tumor agnostic.

Introduction

Gene fusions of the neurotrophic tyrosine receptor kinase gene (*NTRK1/2/3*; coding for tropomyosin receptor kinases TRKA/B/C) lead to the expression of constitutively active chimeric TRK proteins that are potential oncogenic drivers across a large range of tumor types (1,2). *NTRK* gene fusions occur at a low frequency (<1%) in common solid tumors but can be found in >90% of secretory breast carcinoma, mammary analog secretory carcinoma (MASC), and rare pediatric tumors (3,4).

NTRK fusion-positive solid tumors can be treated using targeted therapies, such as larotrectinib and entrectinib, the first two TRK inhibitors approved in the USA (5).

Entrectinib is a potent inhibitor of TRK, ROS1 and ALK and was specifically designed to penetrate and remain in the central nervous system (CNS) (6,7). In 2019 and 2020, entrectinib received US and EU approval/marketing authorizations for the treatment of patients ≥ 12 years old with *NTRK* fusion-positive solid tumors and adults with *ROS1* fusion-positive non–small cell lung cancer (NSCLC). We have previously reported that entrectinib induced durable and clinically meaningful responses in 54 adults with advanced/metastatic *NTRK* fusion-positive solid tumors enrolled in three phase I/II clinical trials (ALKA-372-001; STARTRK-1; STARTRK-2) (8). In that integrated analysis (data cutoff May 31, 2018), entrectinib yielded a 57.4% objective response rate (ORR), a 10.4-month median duration of response (DoR) and an 11.2-month median progression-free survival (PFS). Importantly, intracranial responses were also demonstrated in 6 out of 11 patients with baseline CNS metastases, per blinded independent central review (BICR). These preliminary results demonstrated the systemic and CNS activity of entrectinib across multiple tumor types. Entrectinib was also well tolerated, with a manageable safety profile.

We present updated efficacy and safety data of this integrated analysis with a larger number of patients and longer follow-up.

Material and Methods

Study design and patients

This analysis included patients aged ≥ 18 years in one of two phase I studies (ALKA-372-001 or STARTRK-1) or a phase II global basket study (STARTRK-2), across >150 sites in 16 countries. Patients enrolled prior to July 31, 2019 were included in the efficacy analysis to ensure they had ≥ 12 months' follow-up from their first on-study scan (≥ 13 months after enrollment) at the time of the clinical cutoff date (August 31, 2020). Study designs of the three ongoing trials included in this integrated analysis have been described previously (8,9).

Briefly, all included patients had a solid tumor that harbored a fusion in *NTRK1*, *NTRK2*, or *NTRK3* confirmed by molecular profiling in tissue samples (e.g., next-generation sequencing or PCR; **Appendix**), measurable disease at baseline as assessed by the investigator (RECIST version 1.1), Eastern Cooperative Oncology Group performance status ≤ 2 and no prior treatment with a TRK inhibitor.

All studies were conducted in accordance with the principles of the Declaration of Helsinki and Good Clinical Practice guidelines; all patients provided written informed consent. Protocols were approved by the relevant institutional review boards and/or ethics committees.

Treatments and assessments

Patients received entrectinib orally until documented radiographic progression, unacceptable toxicity, or withdrawal of consent (treatment post-progression was

allowed at the investigator's discretion if the patient derived clinical benefit). The intended entrectinib dose for all patients was 600 mg/day; 3 out of the 121 efficacy-evaluable patients received doses >600 mg daily within the phase I dose-escalation studies.

Tumor screenings (including brain scans) were performed at baseline ≤ 30 days before first administration of entrectinib. Subsequent tumor assessments were scheduled at the end of cycle 1 (4 weeks) and every 8 weeks thereafter, and at end of treatment if not done in the previous 4 weeks or whenever progression was suspected. Patients with baseline CNS metastases per investigator assessment (RECIST v1.1) had brain scans performed at every tumor assessment. All imaging scans were submitted for BICR. CNS follow-up of patients without baseline CNS metastases was performed as clinically indicated based on symptomatic progression or routine CNS scans where customary. Objective tumor response was confirmed radiographically ≥ 4 weeks after first evidence of complete response (CR) or partial response (PR).

Safety assessments were performed through clinical laboratory tests, physical examinations and monitoring of adverse events (AEs) at each patient visit. AEs were coded using the Medical Dictionary for Regulatory Activities (version 21.0 or higher) and graded using the National Cancer Institute Common Terminology Criteria for Adverse Events (version 4.03).

Outcomes

Primary endpoints were ORR, defined as the proportion of patients with confirmed CR or PR as best overall response, and DoR (measured from the date of first objective response to first documentation of radiographic disease progression or

death due to any cause, whichever occurred first), per BICR. For patients without disease progression or death, DoR was censored at last tumor assessment.

Secondary endpoints included PFS by BICR (defined as time from first dose of entrectinib to first documentation of radiographic disease progression or death due to any cause at data cutoff time); overall survival (OS; time from the first dose of entrectinib to the date of death due to any cause); safety and tolerability. For patients with CNS metastases at baseline, further secondary endpoints evaluated entrectinib efficacy specifically in the brain, and included BICR-assessed intracranial ORR, PFS, and DoR. Radiographic CNS metastases progression was defined as an occurrence of a new CNS lesion or progression in pre-existing CNS lesions per RECIST v1.1. Per RECIST v1.1, non-measurable CNS disease could only be categorized as CR, non-CR/non-progressive disease (PD), or PD.

Statistical analyses

The efficacy-evaluable population comprised TRK inhibitor-naïve patients with extracranial *NTRK* fusion-positive solid tumors who received ≥ 1 dose of entrectinib and had measurable disease at baseline. The overall safety-evaluable population included all patients who had received ≥ 1 dose of entrectinib while enrolled in ALKA-372-001, STARTRK-1, STARTRK-2 or STARTRK-NG. STARTRK-NG (NCT02650401) is an ongoing pediatric phase I/II study of entrectinib in patients aged ≤ 22 years (10,11). The *NTRK* fusion-positive safety subpopulation comprised all safety-evaluable adult patients with *NTRK* fusion-positive solid tumors.

Patient demographic and safety data were summarized descriptively. For BICR-assessed objective responses, the number, proportion, and corresponding two-sided Clopper-Pearson exact 95% confidence intervals (CIs) were summarized. All

medians and event-free probabilities for time-to-event endpoints (DoR, PFS and OS) were estimated via the Kaplan-Meier method. SAS (version 9.3 or higher) was used for all statistical analyses.

Data availability statement

The data were generated and analyzed under the auspices of Roche, which is a member of the Vivli Center for global clinical research data (<https://vivli.org/ourmember/roche/>). Roche will share/allow access to individual patient-level data from the clinical trials via Vivli, providing certain criteria are met. Please see the criteria and exceptions on the Roche member section of the Vivli homepage [here](#). Please see also the Roche [Global Data Sharing Policy](#) for more details. To request access to individual patient-level data from the clinical trials, first locate the clinical trial in Vivli (<https://search.vivli.org/> requires sign up and log in) using the trial registration number (given above), then click the 'Request Study' button and follow the instructions. In the event that you cannot see a specific study in the Roche list, an Enquiry Form can be submitted to confirm the availability of the specific study.

To request access to related clinical study documents (eg: protocols, CSR, safety reports), please use Roche's Clinical study documents request form:

https://www.roche.com/research_and_development/who_we_are_how_we_work/research_and_clinical_trials/our_commitment_to_data_sharing/clinical_study_documents_request_form.htm.

Results

Patients

At the clinical cutoff date, the *NTRK* efficacy-evaluable population comprised 121 patients with advanced or metastatic solid tumors who had received ≥ 1 dose of entrectinib with ≥ 12 months of follow-up from first planned tumor assessment (ALKA-372-001: $n = 1$; STARTRK-1: $n = 2$, STARTRK-2: $n = 118$; **Appendix Fig. A1**).

Patient demographics and baseline characteristics of the efficacy-evaluable population are presented in **Table 1**. Twenty-six (21.5%) patients had baseline CNS metastases by investigator assessment; this was confirmed by BICR for 19 patients (15.7%). Patients presented with 14 different tumor types with ≥ 30 distinct histologies (**Appendix Table A1**). The most common tumor types were sarcoma (26 patients [21.5%]), MASC (24 patients [19.8%]), and NSCLC (22 patients [18.2%]). Forty-nine patients (40.5%) had received ≥ 2 prior lines of therapy for metastatic disease; 37 patients (30.6%) had not received any prior therapy for metastatic disease.

Efficacy

After a median survival follow-up of 25.8 months (range, 0.0–48.8), the median duration of treatment was 11.0 months (interquartile range [IQR], 4.6–23.0). In the efficacy-evaluable population, 74 of 121 patients (61.2%) had an objective response; 19 CRs (15.7%) and 55 PRs (45.5%) (**Table 2**). Responses were seen in all tumor types except neuroblastoma ($n = 1$) (**Table 3; Fig. 1A**). Entrectinib led to a higher response rate in patients who had not received any prior systemic therapy for metastatic disease ($n = 30/37$; ORR 81.1%) versus those who had received ≥ 1 line of prior systemic therapy ($n = 44/84$; ORR 52.4%).

Entrectinib yielded similar response rates in patients with *NTRK1* (26/48; 54.2%) or *NTRK3* (47/67; 70.1%) gene fusions. Tumor reduction was observed in 1/6 (16.7%) patients with an *NTRK2* gene fusion (**Appendix Table A2** and **Fig. A2**). Overall, there was no observed relationship between response to entrectinib and fusion partner (**Appendix Fig. A3**).

Responses to entrectinib usually occurred early (median time to first response, 0.95 months), with most responding patients achieving their first response by the end of the first treatment cycle, week 4, when the first post-baseline tumor assessment was performed (**Fig. 1B**). Median DoR per BICR in the 74 patients with an objective response was 20.0 months (95% CI, 13.0–38.2) (**Table 2; Fig. 1C**). Five non-responders with SD also remained on therapy for ≥ 8 months (**Fig. 1B**). At data cutoff, 72 of 121 (59.5%) efficacy-evaluable patients had experienced disease progression or died; median PFS was 13.8 months (95% CI, 10.1–19.9) and median OS 33.8 months (95% CI, 23.4–46.4) (**Table 2; Fig. 2A and B**). The event-free probability of PFS was 0.74 (95% CI, 0.66–0.82) at 6 months, 0.53 (95% CI, 0.43–0.62) at 12 months and 0.41 (95% CI, 0.32–0.51) at 18 months.

BICR-assessed ORR was similar in patients with investigator-assessed baseline CNS metastases (15/26; 57.7%) and in patients without investigator-assessed baseline CNS metastases (59/95; 62.1%) (**Table 2**). In these two populations, median DoR was 17.2 months (95% CI, 6.0–29.4) and 29.0 months (95% CI, 12.9–not estimable [NE]), respectively; median PFS was 11.7 months (95% CI, 4.7–30.2) and 13.8 months (95% CI, 10.2–20.8), respectively (**Table 2**). Equivalent data for BICR-assessed baseline CNS metastases are presented in **Appendix Table A3**. In the overall efficacy-evaluable population, 6 of 121 patients (5.0%; all with baseline CNS metastases), experienced CNS progression (**Appendix Fig. A4**). Median time

to CNS progression (exploratory endpoint; only scan-confirmed CNS progression counted as an event) was not estimable; the 12-month event-free probability was 100% in patients without investigator-assessed baseline CNS disease (no patient had experienced symptomatic, scan-confirmed CNS progression by data cutoff) and 81% in those with baseline CNS disease. Data for CNS PFS in these populations are described in the **Appendix**.

Among 11 patients with measurable CNS metastases at baseline per BICR, intracranial ORR was 63.6% ($n = 7$ [3 CR; 4 PR]; 95% CI, 30.8–89.1), median intracranial DoR was 22.1 (95% CI, 7.4–NE) and median intracranial PFS was 19.9 months (95% CI, 5.9–NE); 6 patients experienced an event (3 CNS disease progression; 3 deaths) (**Appendix Table A4**). One patient with thyroid cancer had PD as best intracranial response and overall PR (**Fig. 3**). This patient had received 2 prior lines of systemic therapy and, at data cut-off, was still under treatment after 38.1 months. Among patients with non-measurable CNS metastases at baseline per BICR, 3 had CR and 5 had non-CR/PD. Overall, patients with measurable or non-measurable baseline CNS disease per BICR ($N = 19$) showed an intracranial ORR of 52.6%; 95% CI, 28.9–75.6 (**Appendix Table A4**). Median time to first intracranial response was 2.7 months (IQR 0.9–4.6). Intracranial response according to prior brain radiotherapy status is described in **Appendix Table A5**.

Safety

Safety analyses included two different populations (**Appendix Table A6**): the overall entrectinib safety-evaluable population ($n = 626$ patients; 583 adults, 43 pediatric [pediatric study entrectinib dose, 250–750 mg]) comprising patients from STARTRK-1, STARTRK-2, ALKA-372-001 and STARTRK-NG, and the subgroup of *NTRK* fusion-positive safety-evaluable adult patients ($n = 193$). At data cutoff, the median

treatment duration was 8.3 months (IQR, 2.7–17.3) in the *NTRK* fusion-positive safety-evaluable population and 6.4 months (IQR 1.9–18.4) in the overall safety population.

Almost all patients from the *NTRK* fusion-positive (99.5%) and overall safety population (99.2%) experienced ≥ 1 AE of any grade (**Appendix Table A7**). Most patients from the *NTRK* (90.7%) and overall (92.0%) safety populations experienced ≥ 1 TRAE of any grade (**Appendix Table A8**). TRAEs reported in these populations were mostly grade 1–3 and non-serious; the most common were dysgeusia (35.2% [*NTRK*]; 35.9% [overall]), diarrhea (31.1%; 25.9%), fatigue (27.5%; 28.8%), and weight increase (27.5%; 27.3%).

Grade ≥ 3 TRAEs were reported in 41.5% and 38.0% of patients in the *NTRK* fusion-positive and overall safety populations, respectively. In the *NTRK* safety population, the most common grade 3 or 4 TRAEs were weight gain (8.3%), anemia (5.2%) and fatigue (4.7%) (**Appendix Table A8**).

Serious TRAEs were reported by 24 (12.4%) patients from the *NTRK* fusion-positive safety population and 72 (11.5%) patients from the overall safety population (**Appendix Table A9**). The most common were nervous system disorders (including dizziness and cognitive disorder), reported in 9 patients (4.7%) from the *NTRK* safety population. At data cutoff, five deaths (all $n = 1$: atrioventricular block in MASC; cardiac arrest and ventricular fibrillation in papillary thyroid cancer; sudden death in neuroblastoma; cerebrovascular accident in head and neck cancer) were reported to have a potential relationship with entrectinib. They all occurred within one week of treatment initiation; the role of entrectinib in these deaths was thus unclear.

Most TRAEs were reversible and resolved following dose reductions or modifications. In the *NTRK* fusion-positive safety population, TRAEs that led to dose reduction occurred in 25.4% of patients, and median (IQR) dose intensity over the full treatment duration was 91.3% (65.9–99.6); patients' age had no influence on dose reductions. Drug interruptions due to TRAEs were seen in 65 (33.7%) patients. The most common all-cause TRAEs leading to dose reductions were dizziness (4.1%), anemia ($n = 5$; 2.6%), fatigue and blood creatinine increase (both $n=4$; 2.1%). Sixteen patients (8.3%) from the *NTRK* fusion-positive safety population discontinued entrectinib due to TRAEs.

In the overall safety population, TRAEs led to dose reductions in 25.6% of patients, drug interruptions in 31.2% of patients and discontinuation in 6.5% of patients. Median dose intensity was 94.2% (IQR 67.8–100.0).

Data from an earlier clinical data cutoff (October 31, 2018) were used to support the European approval of entrectinib. The key efficacy data from this cutoff ($N = 74$) are included in **Appendix Tables A10, A11, A12** and **Fig. A5**, and the key safety data from this cutoff ($n = 113$ *NTRK* fusion-positive adult patients) are presented in **Appendix Tables A13** and **A14**.

Discussion

We report data from an updated integrated efficacy and safety analysis of patients with *NTRK* fusion-positive solid tumors, including more patients ($n = 121$ vs. 54) and a longer follow-up (25.8 vs. 12.9 months) than the previous report (8). With additional clinical experience, entrectinib treatment continues to achieve high ORR (61.2%) and sustained responses (median DoR 20.0 months) in patients with *NTRK* fusion-

positive solid tumors, confirming and improving upon our previously reported data (ORR, 57.4%; DoR, 10.4 months); median PFS was similar to previously reported, at 13.8 months vs. 11.2 months previously.

Notably, although responses were observed across tumor types, ORR in *NTRK* fusion-positive CRC seemed markedly lower than in the other most common tumors examined. Local and large-scale analyses of molecular features of tyrosine kinase fusion-positive CRC identified it as a unique tumor type associated with high TMB and spontaneous high MSI (12,13). Importantly, median TMB was not increased in the other *NTRK* fusion-positive tumors, suggesting that *NTRK* fusion-positive CRC may have a different pathophysiological profile to the other tumor types. This may explain the lower ORR observed in this population. However, the long DoR in those who responded to entrectinib indicates that some patients with this tumor type can derive benefit from TRK-targeted therapies. All these observations are very important for the clinical field of *NTRK* fusions, since they suggest that treatment decisions for patients with *NTRK* fusion-positive CRC should also take TMB/MSI status into consideration. Overall, gathering further evidence on *NTRK* fusion-positive CRC would help shed light on the physiology of this unique tumor type and enable us to identify the patients who would benefit from TRK-targeted therapies.

Along with the confirmed overall efficacy in patients with and without CNS metastases at baseline per investigator assessment (overall ORR 57.7% and 62.1%, respectively), entrectinib also had intracranial activity in 7 out of 11 patients (63.6%; median intracranial DoR 22.1 months) with BICR-assessed measurable CNS metastases at baseline; this is consistent with its previously described mechanism of action and pharmacologic profile (7). Indeed, entrectinib was rationally designed to penetrate and remain in the CNS. Contrary to P-glycoprotein (P-gp) substrates such

as larotrectinib, entrectinib is not exported out of the brain by P-gp and can therefore exert strong intracranial activity (7). Importantly, none of the 95 patients without investigator-assessed baseline CNS metastases experienced scan-confirmed symptomatic CNS progression, and median time to CNS progression (deaths censored) in patients with CNS metastases at baseline was 30.2 months (95% CI, 26.7–NE). CNS follow-up was only comprehensive for patients with baseline CNS metastases: regular CNS scans of those without baseline CNS metastases would have been performed as clinically indicated (e.g., if relevant neurological symptoms were detected). It would have perhaps been preferable to mandate repeat CNS scans for patients with tumor types with a known high incidence of CNS progression (e.g., NSCLC or breast cancer (14)) to provide more insights into the hypothetical CNS-protective effect of entrectinib. Indeed, the ESMO Clinical Practice Guidelines for managing brain metastases from solid tumors recommend CNS screening at diagnosis in subgroups of patients at high risk of developing brain metastases (e.g., NSCLC, *HER2*-positive breast cancer, and grade IV melanoma) (15). Additionally, in the entrectinib trials, CNS metastases were more frequent than expected in some tumor types such as *NTRK* fusion-positive thyroid cancer and sarcoma; extended life expectancy of patients may increase the likelihood of CNS metastases developing in histologies where they are normally uncommon. This, however, remains to be confirmed. Entrectinib can address the unmet need of a CNS-active treatment for patients with *NTRK* fusion-positive solid tumors with CNS metastases.

Larotrectinib is a TRK inhibitor also approved in the USA and Europe for the treatment of *NTRK* fusion-positive solid tumors. In updated results from the phase I/II integrated analysis of larotrectinib in 116 adult patients with *NTRK* fusion-positive solid tumors (16,17), ORR per investigator was 71%, median DoR 35.2 months and

median PFS 25.8 months. Overall efficacy was reported for the 14 (12%) patients with baseline CNS metastases, but intracranial efficacy was not a predefined study endpoint. *NTRK* gene fusions occur in <1% of tumors, therefore the larotrectinib and entrectinib trials used single-arm study designs and integrated analyses to evaluate efficacy and safety. The study designs and patient populations differ substantially between the entrectinib and larotrectinib trials, for example the entrectinib studies included a lower proportion of pediatric malignancies and a higher proportion of patients with CNS metastases at baseline (21% vs. 12% for larotrectinib). The utility of cross-study comparisons is therefore limited, and further complicated by the fact that reporting methods differ between studies. For example, entrectinib studies primarily used BICR whereas larotrectinib studies primarily used investigator-assessed response. This leads to slight discrepancies for ORR: in the larotrectinib studies, ORR was 71% by INV and 66% by BICR (18).

Within the entrectinib studies, variation in response probabilities was observed between tumor types, likely due to differences in biology and prognoses across the multiple histologies; other patient parameters may also influence and confound clinical outcomes. As patient numbers were low and confidence intervals accordingly large, further recruitment should give a clearer picture of the efficacy of entrectinib across *NTRK* fusion-positive tumor types. Additional molecular analyses, such as the identification of currently non-targetable alterations that may impact disease dynamics or be linked to resistance mechanisms are currently being performed but have so far not shown any correlation between the presence of co-alterations and response or resistance to treatment.

In this study, entrectinib was well tolerated with low discontinuation rates and dose reduction rates consistent with previous reports. The high median dose intensity

(>91%) also indicates that any dose reductions and/or interruptions had minor impact on overall dose exposure, with the majority of patients receiving most of the full planned dose. The safety profile was similar between the *NTRK* fusion-positive and overall safety populations, and aligned with the safety profile of other TRK-targeted agents such as larotrectinib and with the previously reported safety profile (19,20).

Conclusions

This updated integrated analysis of entrectinib phase I/II clinical trials included more patients and longer follow-up than the previously reported data. Entrectinib continued to demonstrate clinically meaningful, durable systemic responses in patients with *NTRK* fusion-positive solid tumors and was associated with intracranial responses in the small cohort of patients with baseline CNS metastases at baseline, suggesting it could address the unmet need of a CNS-active treatment for these patients.

Although *NTRK* fusions are rare, our results should encourage broader screening for these fusions in patients with solid tumors as they may benefit from entrectinib (21).

Authors' Contributions

- Conceptualization: Demetri GD, Drilon A, Siena S, Rolfo C
- Methodology: Drilon A, Siena S
- Investigation and data collection: Demetri GD, De Braud F, Drilon A, Siena S, Patel MR, Cho BC, Liu SV, Ahn M-J, Chiu C-H, Lin JJ, Goto K, Lee J, Bazhenova L, John T, Fakih M, Chawla SP, Dziadziuszko R, Seto T, Rolfo C, Pitcher B
- Formal analysis: Demetri GD, Pitcher B, Rolfo C
- Data curation: Demetri GD, Drilon A, Pitcher B, Chen D, Wilson TR
- Project administration: Drilon A
- Supervision: Drilon A
- Validation: Siena S
- Funding acquisition: Demetri GD
- Writing – original draft: Demetri GD, De Braud F, Drilon A, Siena S, Patel MR, Cho BC, et al. (all authors)
- Writing – review & editing: Demetri GD, De Braud F, Drilon A, Siena S, Patel MR, Cho BC, et al. (all authors)

Acknowledgments

This work was funded by F. Hoffmann-La Roche Ltd.

The authors would like to thank the patients, their families and the participating study centers. We also thank Apurva Javery for her support with curating the data. Third-party medical writing assistance, under the direction of the authors, was provided by Laura Vergoz, PhD, of Ashfield MedComms, an Ashfield Health company, and was funded by F. Hoffmann-La Roche Ltd.

In memory of our dear colleague and friend Todd Riehl, whose contributions to the work in this manuscript we would like to honor.

References

1. Vaishnavi A, Capelletti M, Le AT, Kako S, Butaney M, Ercan D, *et al.* Oncogenic and drug-sensitive *NTRK1* rearrangements in lung cancer. *Nat Med* 2013;**19**(11):1469-72 doi 10.1038/nm.3352.
2. Amatu A, Sartore-Bianchi A, Bencardino K, Pizzutilo EG, Tosi F, Siena S. Tropomyosin receptor kinase (TRK) biology and the role of *NTRK* gene fusions in cancer. *Ann Oncol* 2019;**30**:viii5-viii15 doi 10.1093/annonc/mdz383.
3. Cocco E, Scaltriti M, Drilon A. *NTRK* fusion-positive cancers and TRK inhibitor therapy. *Nat Rev Clin Oncol* 2018;**15**(12):731-47 doi 10.1038/s41571-018-0113-0.
4. Hsiao SJ, Zehir A, Sireci AN, Aisner DL. Detection of tumor *NTRK* gene fusions to identify patients who may benefit from tyrosine kinase (TRK) inhibitor therapy. *J Mol Diagn* 2019;**21**(4):553-71 doi 10.1016/j.jmoldx.2019.03.008.
5. Rolfo C. *NTRK* gene fusions: a rough diamond ready to sparkle. *Lancet Oncol* 2020;**21**(4):472-4 doi 10.1016/s1470-2045(20)30026-7.
6. Menichincheri M, Ardini E, Magnaghi P, Avanzi N, Banfi P, Bossi R, *et al.* Discovery of entrectinib: a new 3-aminoindazole as a potent anaplastic lymphoma kinase (ALK), c-ros oncogene 1 kinase (ROS1), and pan-tropomyosin receptor kinases (Pan-TRKs) inhibitor. *J Med Chem* 2016;**59**(7):3392-408 doi 10.1021/acs.jmedchem.6b00064.
7. Fischer H, Ullah M, de la Cruz CC, Hunsaker T, Senn C, Wirz T, *et al.* Entrectinib, a TRK/ROS1 inhibitor with anti-CNS tumor activity: differentiation from other inhibitors in its class due to weak interaction with P-glycoprotein. *Neuro Oncol* 2020;**22**(6):819-29 doi 10.1093/neuonc/noaa052.

8. Doebele RC, Drilon A, Paz-Ares L, Siena S, Shaw AT, Farago AF, *et al.* Entrectinib in patients with advanced or metastatic *NTRK* fusion-positive solid tumours: integrated analysis of three phase 1–2 trials. *Lancet Oncol* 2020;**21**(2):271-82 doi 10.1016/s1470-2045(19)30691-6.
9. Drilon A, Siena S, Ou S-HI, Patel M, Ahn MJ, Lee J, *et al.* Safety and antitumor activity of the multitargeted pan-TRK, ROS1, and ALK inhibitor entrectinib: combined results from two Phase I trials (ALKA-372-001 and STARTRK-1). *Cancer Discov* 2017;**7**(4):400-9 doi 10.1158/2159-8290.Cd-16-1237.
10. Desai AV, Brodeur GM, Foster J, Berg SL, Basu EM, Shusterman S, *et al.* Phase 1 study of entrectinib (RXDX-101), a TRK, ROS1, and ALK inhibitor, in children, adolescents, and young adults with recurrent or refractory solid tumors. *J Clin Oncol* 2018;**36**:10536- doi 10.1200/JCO.2018.36.15_suppl.10536.
11. Robinson GW, Gajjar AJ, Gouvain KM, Basu EM, Macy ME, Maese LD, *et al.* Phase 1/1B trial to assess the activity of entrectinib in children and adolescents with recurrent or refractory solid tumors including central nervous system (CNS) tumors. *J Clin Oncol* 2019;**37**(15_suppl):10009- doi 10.1200/JCO.2019.37.15_suppl.10009.
12. Singh H, Li YY, Spurr LF, Shinagare AB, Abhyankar R, Reilly E, *et al.* Molecular Characterization and Therapeutic Targeting of Colorectal Cancers Harboring Receptor Tyrosine Kinase Fusions. *Clin Cancer Res* 2021;**27**(6):1695-705 doi 10.1158/1078-0432.CCR-20-4073.
13. Westphalen CB, Krebs MG, Le Tourneau C, Sokol ES, Maund SL, Wilson TR, *et al.* Genomic context of *NTRK1/2/3* fusion-positive tumours from a large real-world population. *NPJ Precis Oncol* 2021;**5**:69 doi 10.1038/s41698-021-00206-y.

14. Rick JW, Shahin M, Chandra A, Dalle Ore C, Yue JK, Nguyen A, *et al.* Systemic therapy for brain metastases. *Crit Rev Oncol Hematol* 2019;**142**:44-50 doi 10.1016/j.critrevonc.2019.07.012.
15. Le Rhun E, Guckenberger M, Smits M, Dummer R, Bachelot T, Sahm F, *et al.* EANO-ESMO Clinical Practice Guidelines for diagnosis, treatment and follow-up of patients with brain metastasis from solid tumours. *Ann Oncol* 2021;**32**(11):1332-47 doi 10.1016/j.annonc.2021.07.016.
16. Drilon AE, Farago AF, Tan DS-W, Kummar S, McDermott RS, Berlin J, *et al.* Activity and safety of larotrectinib in adult patients with TRK fusion cancer: an expanded data set. *J Clin Oncol* 2020;**38**(15_suppl):3610- doi 10.1200/JCO.2020.38.15_suppl.3610.
17. McDermott R, van Tilburg CM, Farago AF, Kummar S, Tan DSW, Albert CM, *et al.* 1955P Survival benefits of larotrectinib in an integrated dataset of patients with TRK fusion cancer. *Ann Oncol* 2020;**31**:S1101-S2 doi 10.1016/j.annonc.2020.08.1347.
18. EU EMA.Larotrectinib (VITRAKVI) EU Summary of Product Characteristics. 2019 <https://www.ema.europa.eu/en/documents/product-information/vitrakvi-epar-product-information_en.pdf>
19. Drilon A, Laetsch TW, Kummar S, DuBois SG, Lassen UN, Demetri GD, *et al.* Efficacy of larotrectinib in TRK fusion-positive cancers in adults and children. *N Engl J Med* 2018;**378**(8):731-9 doi 10.1056/NEJMoa1714448.
20. Hong DS, DuBois SG, Kummar S, Farago AF, Albert CM, Rohrberg KS, *et al.* Larotrectinib in patients with TRK fusion-positive solid tumours: a pooled analysis of three phase 1/2 clinical trials. *Lancet Oncol* 2020;**21**(4):531-40 doi 10.1016/S1470-2045(19)30856-3.
21. Cardona AF, Arrieta O, Ruiz-Patino A, Sotelo C, Zamudio-Molano N, Zatarain-Barron ZL, *et al.* Precision medicine and its implementation in

patients with NTRK fusion genes: perspective from developing countries. *Ther Adv Respir Dis* 2020;**14**:1753466620938553 doi
10.1177/1753466620938553.

TABLES

Table 1. Patient demographics and baseline characteristics in patients with *NTRK* fusion-positive solid tumors.

Characteristic		<i>NTRK</i> efficacy- evaluable population (N = 121)
Age, years	Median (range)	57.0 (21–88)
Sex, <i>n</i> (%)	Female / Male	62 (51.2) / 59 (48.8)
Race, <i>n</i> (%)	White / Asian / Black or African American / Other or Not reported	73 (60.3) / 29 (24.0) / 3 (2.5) / 16 (13.2)
History of smoking (<i>n</i> = 118), <i>n</i> (%)	No / Yes	72 (61.0) / 46 (39.0)
ECOG PS, <i>n</i> (%)	0 / 1 / 2	53 (43.8) / 57 (47.1) / 11 (9.1)
Prior lines of systemic therapy ^a , <i>n</i> (%)	0 / 1 / 2 / 3 / ≥4	37 (30.6) / 35 (28.9) / 26 (21.5) / 12 (9.9) / 11 (9.1)
Any previous therapy ^b , <i>n</i> (%)	Chemotherapy / Targeted therapy / Hormonal therapy / Immunotherapy	88 (72.7) / 24 (19.8) / 10 (8.3) / 13 (10.7)
CNS metastases at baseline ^c , <i>n</i> (%)	Present / Measurable / Absent	20 (16.5) / 6 (5.0) / 95 (78.5)
Prior radiotherapy of the brain ^d (<i>n</i> = 26), <i>n</i> (%)	Yes / No	17 (65.4) / 9 (34.6)
Time from end of prior radiotherapy of the brain to first dose ^e , <i>n</i> (%)	<2 months / 2 to <6 months / ≥6 months	7 (41.2) / 5 (29.4) / 5 (29.4)
<i>NTRK</i> fusion, <i>n</i> (%)	<i>NTRK1</i> / <i>NTRK2</i> / <i>NTRK3</i>	48 (39.7) / 6 (5.0) / 67 (55.4)

Tumor category ^f , <i>n</i> (%)	Sarcoma	26 (21.5)
	Salivary (MASC)	24 (19.8)
	NSCLC	22 (18.2)
	Thyroid	13 (10.7)
	Colorectal	10 (8.3)
	Breast	7 (5.8)
	Neuroendocrine	5 (4.1)
	Pancreatic	4 (3.3)
	Cancer of unknown primary	3 (2.5)
	Gynecologic	2 (1.7)
	Head and neck (other)	2 (1.7)
	Cholangiocarcinoma	1 (0.8)
	Adenocarcinoma of upper GI tract	1 (0.8)
	Neuroblastoma	1 (0.8)

Abbreviations: CNS, central nervous system; ECOG PS, Eastern Cooperative Oncology Group performance status; GI, gastrointestinal; MASC, mammary analogue secretory carcinoma; NSCLC, non-small cell lung cancer; *NTRK*, neurotrophic tyrosine receptor kinase.

^aLines of therapy determined from the time of metastatic disease diagnosis.

^bPrevious therapy in any setting.

^cCNS metastases status as per investigator assessment.

^dAmong patients with baseline CNS metastases per investigator assessment.

^eAmong patients with baseline CNS metastases and prior radiotherapy of the brain.

^fPatients may have had multiple sites of metastases at baseline.

Table 2. Overall efficacy (BICR assessed) of entrectinib in patients with *NTRK* fusion-positive solid tumors, by baseline investigator-assessed CNS metastases status.

Efficacy parameter	Efficacy-evaluable population (N = 121)	Baseline CNS metastases^a (n = 26)	No baseline CNS metastases^a (n = 95)
Objective response rate, <i>n</i> (%)	74 (61.2)	15 (57.7)	59 (62.1)
(95% CI)	(51.9–69.9)	(36.9–76.7)	(51.6–71.9)
Complete response	19 (15.7)	2 (7.7)	17 (17.9)
Partial response	55 (45.5)	13 (50.0)	42 (44.2)
Stable disease	13 (10.7)	4 (15.4)	9 (9.5)
Progressive disease	13 (10.7)	2 (7.7)	11 (11.6)
Non-CR/non-PD ^b	6 (5.0)	0	6 (6.3)
Missing or unevaluable ^c	15 (12.4)	5 (19.2)	10 (10.5)
Duration of response	<i>n</i> = 74	<i>n</i> = 15	<i>n</i> = 59
Median, months (95% CI)	20.0 (13.0–38.2)	17.2 (6.0–29.4)	29.0 (12.9–NE)
Progression-free survival			
Median, months (95% CI)	13.8 (10.1–19.9)	11.7 (4.7–30.2)	13.8 (10.2–20.8)
Overall survival			
Median, months (95% CI)	33.8 (23.4–46.4)	19.9 (7.9–NE)	37.1 (23.9–NE)

Data cutoff August 31, 2020.

Abbreviations: BICR, blinded independent central review; CI, confidence interval; CNS, central nervous system; CR, complete response; NE,

not estimable; *NTRK*, neurotrophic tyrosine receptor kinase; PD, progressive disease.

^aCNS metastases status determined by investigator.

^bPatients with non-measurable lesions.

^cMissing or unevaluable included patients with unevaluable on-study scans or who discontinued prior to obtaining adequate scans to evaluate or confirm response.

Table 3. Overall efficacy (BICR assessed) of entrectinib in patients with *NTRK* fusion-positive solid tumors, by tumor type.

Tumor category	<i>n</i>	Baseline CNS metastases ^a <i>n</i> (%)	Objective response	Duration of	Progression-	Overall
			rate <i>n</i> (%) (95% CI)	response median, months (95% CI)	free survival median, months (95% CI)	survival median, months (95% CI)
Sarcoma	26	2 (7.7)	15 (57.7) (36.9–76.7)	15.0 (4.6–NE)	10.1 (6.3–13.7)	18.7 (14.5–NE)
Salivary (MASC)	24	1 (4.2)	20 (83.3) (62.6–95.3)	NE (NE–NE)	NE (13.8–NE)	NE (NE–NE)
NSCLC	22	13 (59.1)	14 (63.6) (40.7–82.8)	19.9 (10.4–29.4)	14.9 (6.5–30.4)	NE (20.8–NE)
Thyroid cancer	13	7 (53.8)	7 (53.8) (25.1–80.8)	13.2 (7.9–NE)	19.9 (6.5–33.8)	19.9 (14.5–NE)
Colorectal carcinoma	10	0 (0)	2 (20.0) (2.5–55.6)	17.6 (15.1–20.0)	2.8 (1.9–16.0)	16.0 (10.8–37.1)
Breast cancer	7	2 (28.6)	5 (71.4) (29.0–96.3)	12.9 (4.2–NE)	10.1 (5.1–NE)	19.2 (5.1–NE)
Neuroendocrine tumors	5	0 (0)	2 (40.0) (5.3–85.3)	NE (11.1–NE)	15.6 (0.9–NE)	40.5 (28.6–40.5)
Pancreatic cancer	4	0 (0)	3 (75.0)	12.9	12.8	22.0

			(19.4–99.4)	(7.1–12.9)	(6.2–17.5)	(11.2–30.7)
Cancer of unknown primary	3	0 (0)	1 (33.3) (0.8–90.6)	9.1 (NE–NE)	7.2 (4.4–10.0)	14.3 (NE–NE)
Gynecologic	2	0 (0)	1 (50.0) (1.3–98.7)	38.2 (NE–NE)	27.4 (13.7–41.2)	39.3 (32.1–46.4)
Head and neck	2	0 (0)	2 (100.0) (15.8–100.0)	NE (16.9–NE)	NE (17.6–NE)	NE (NE–NE)
Cholangiocarcinoma	1	0 (0)	1 (100.0) (2.5–100.0)	9.3 (NE–NE)	12.0 (NE–NE)	23.4 (NE–NE)
Adenocarcinoma of upper GI tract	1	0 (0)	1 (100.0) (2.5–100.0)	29.0 (NE–NE)	30.0 (NE–NE)	NE (NE–NE)
Neuroblastoma	1	1 (100.0)	0 (0) (NA)	—	0.1 (NE–NE)	0.1 (NE–NE)

Data cutoff August 31, 2020.

Abbreviations: BICR, blinded independent central review; CI, confidence interval; CNS, central nervous system; GI, gastrointestinal; MASC, mammary analogue secretory carcinoma; NA, not applicable; NE, not estimable; NSCLC, non-small cell lung cancer; *NTRK*, neurotrophic tyrosine receptor kinase.

^aCNS metastases status determined by investigator.

FIGURE LEGENDS

Figure 1.

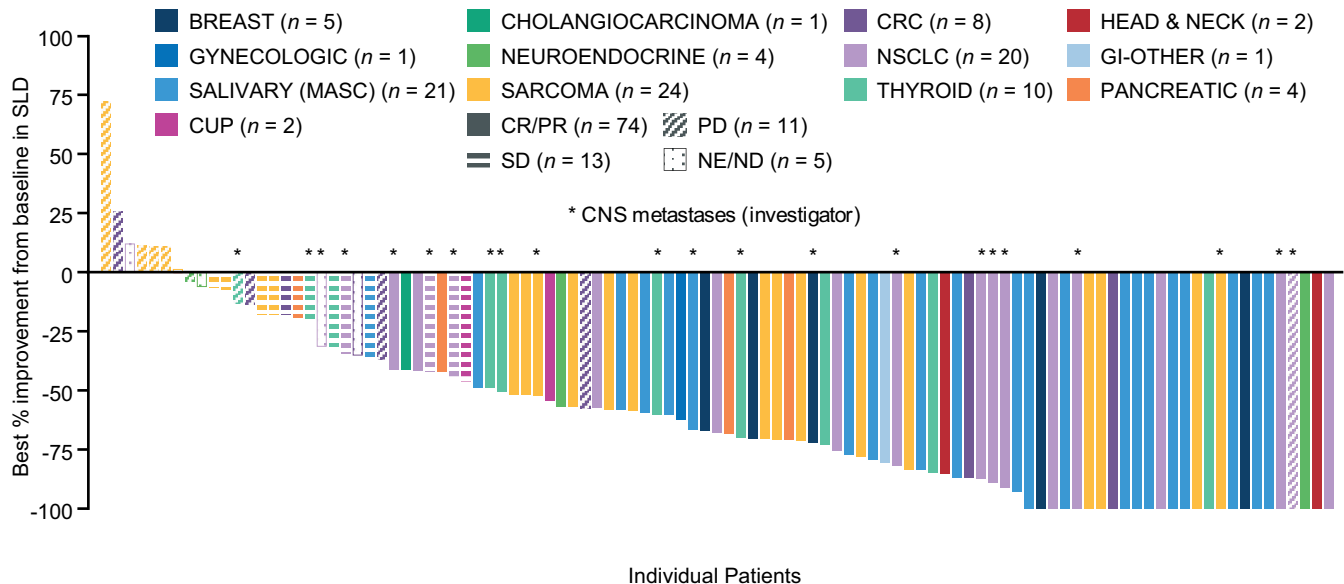
Responses and time on entrectinib treatment in patients with *NTRK* fusion-positive solid tumors, by tumor type (BICR assessed). **A**, Best individual patient responses ($n = 103$; 18 patients with missing SLD change were excluded from the plot); **B**, Time on entrectinib treatment; **C**, Kaplan-Meier curve of DoR for responding patients. Data cutoff August 31, 2020. The minimum shrinkage in the SLD of target lesions that defined an objective response was 30%. GI-other: adenocarcinoma of upper GI tract. BICR, blinded independent central review; CNS, central nervous system; CR, complete response; CRC, colorectal carcinoma; CUP, cancer of unknown primary; DoR, duration of response; GI, gastrointestinal; Inv, investigator; MASC, mammary analogue secretory carcinoma; ND, not determined; NE, not estimable; NSCLC, non-small cell lung cancer; *NTRK*, neurotrophic tyrosine receptor kinase; PD, progressive disease; PR, partial response; RECIST, response evaluation criteria in solid tumors; SD, stable disease; SLD, sum of the longest diameter.

Figure 2.

Time-to-event analyses for **A**, Progression-free survival per BICR; **B**, Overall survival in patients with *NTRK* fusion-positive solid tumors ($N = 121$). Data cutoff August 31, 2020. BICR, blinded independent central review; *NTRK*, neurotrophic tyrosine receptor kinase.

Figure 3.

Best intracranial responses to entrectinib in patients with *NTRK* fusion-positive solid tumors and measurable CNS metastases (BICR assessed) at baseline. Data cutoff August 31, 2020. Response assessed by BICR. Patients with new CNS lesions or unequivocal progression of non-target lesions had overall response classified as PD, even if the SLD of all lesions was reduced. BICR, blinded independent central review; CNS, central nervous system; CR, complete response; NE, not estimable; ND, not determined; NSCLC, non-small cell lung cancer; *NTRK*, neurotrophic tyrosine receptor kinase; PD, progressive disease; PR, partial response; SD, stable disease; SLD, sum of the longest diameter.



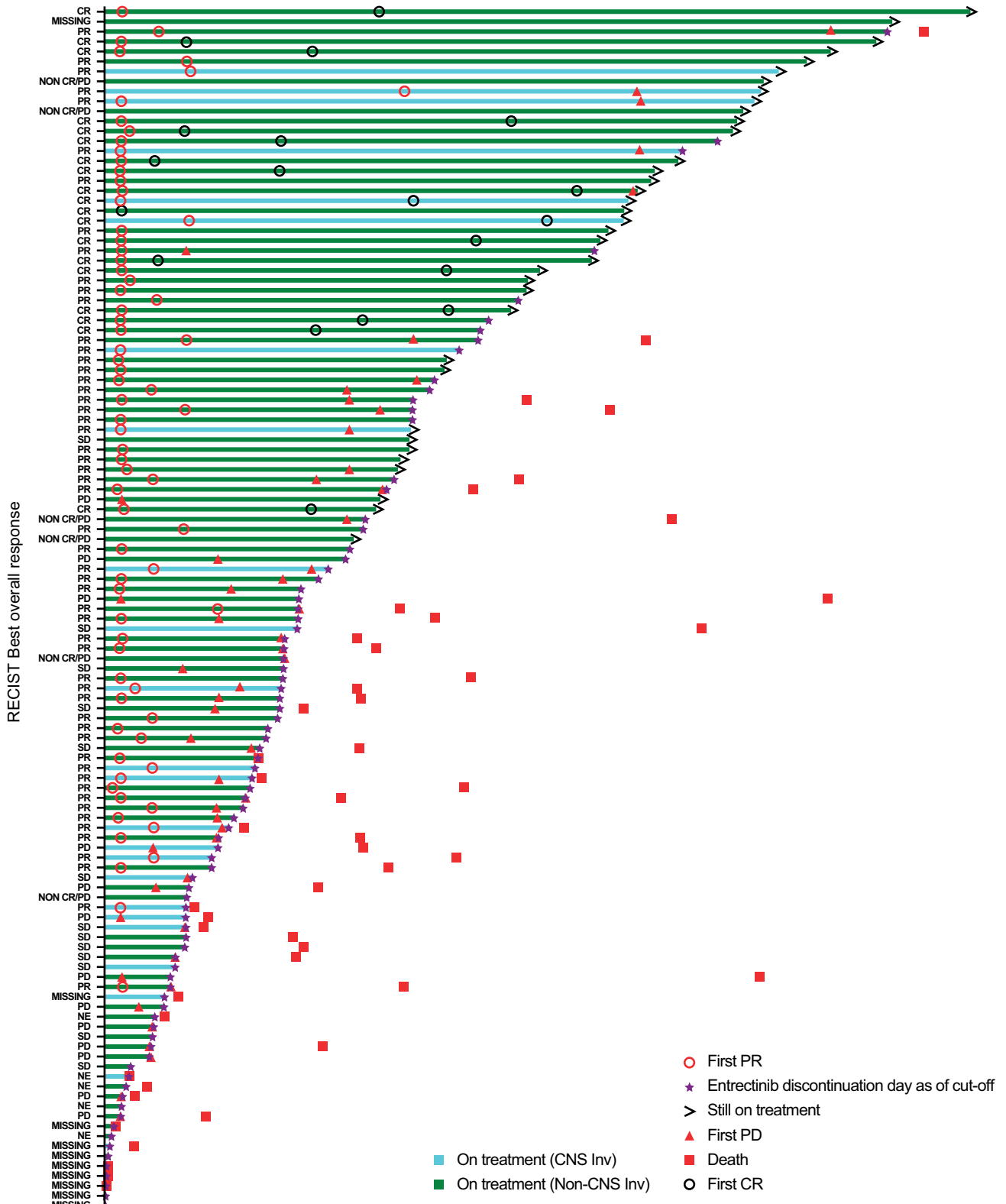
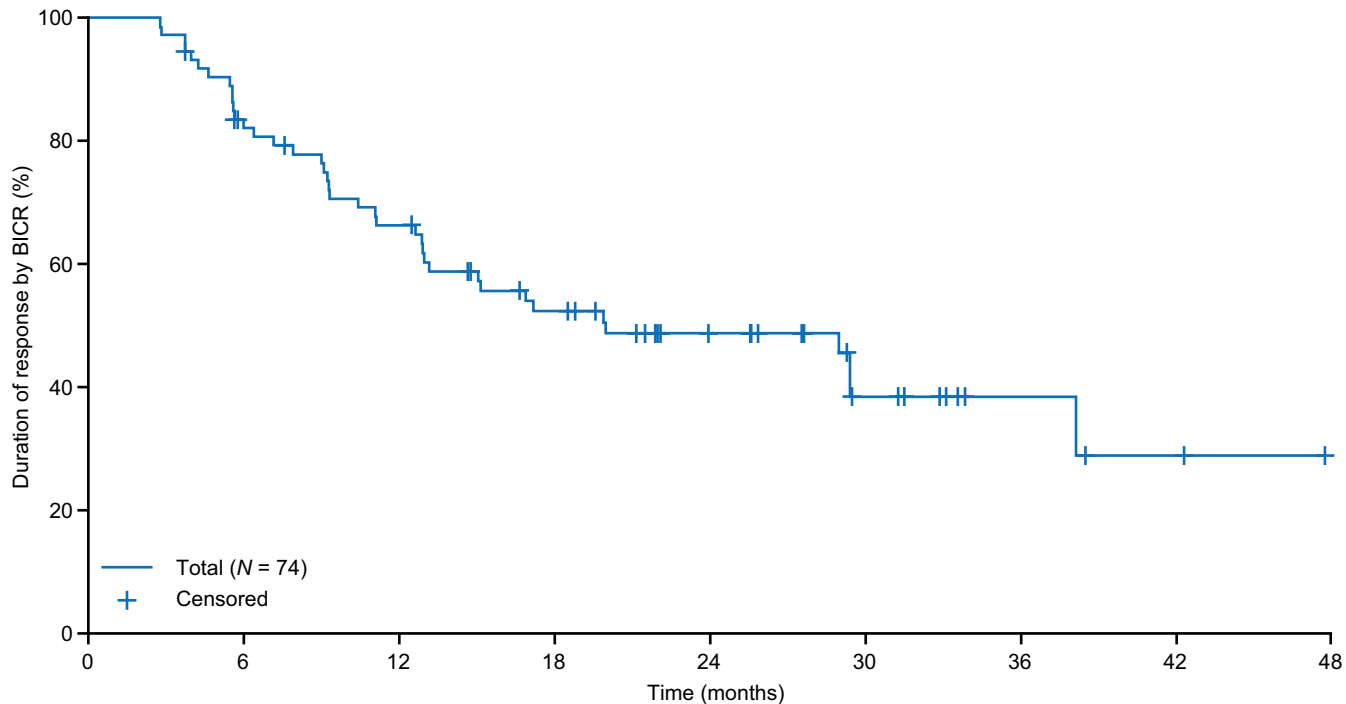


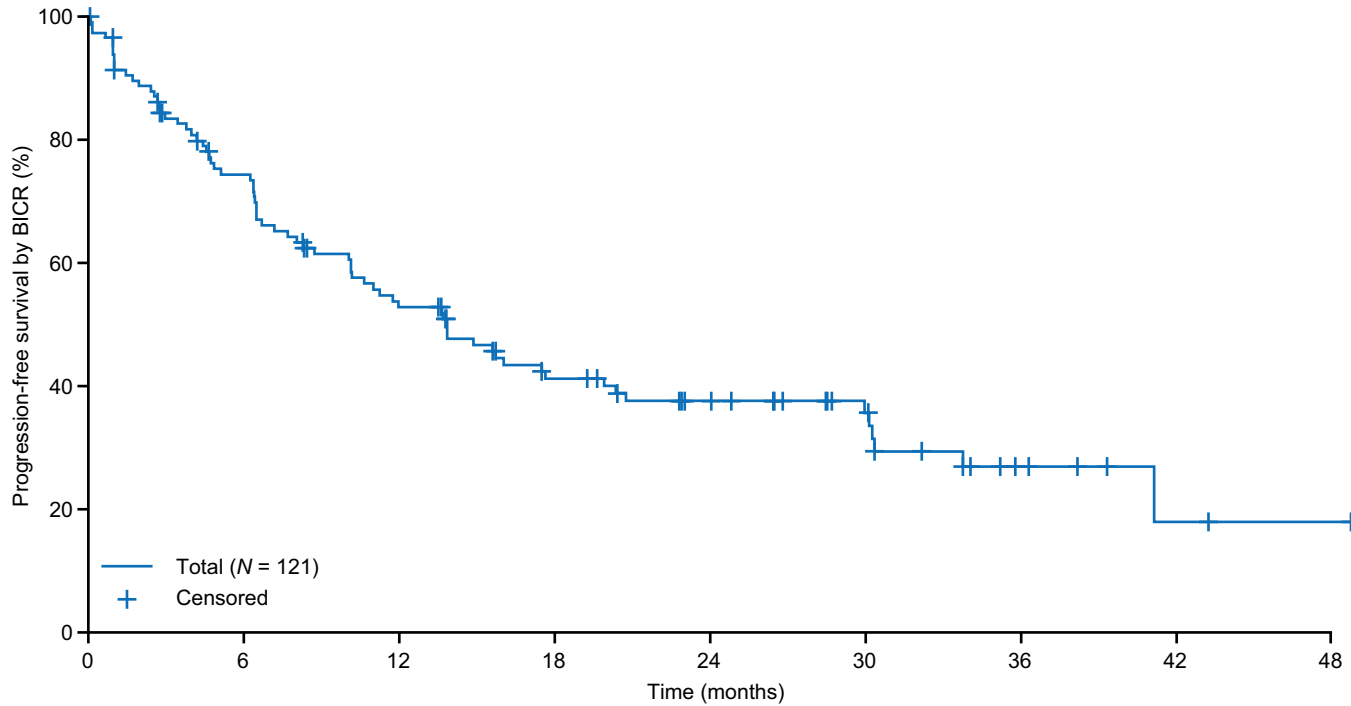
Figure 1C



Patients at risk

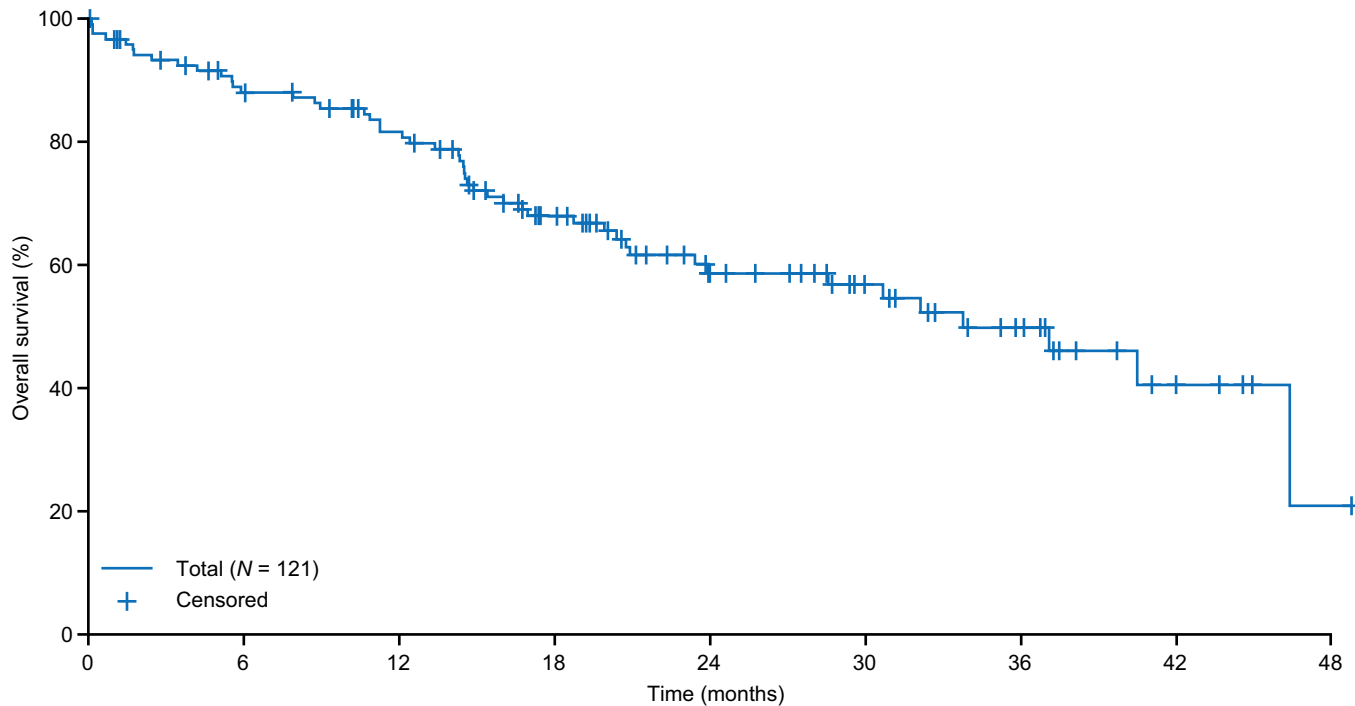
74 72 58 54 46 37 32 27 20 17 10 7 4 2 2 1

Figure 2A



Patients at risk

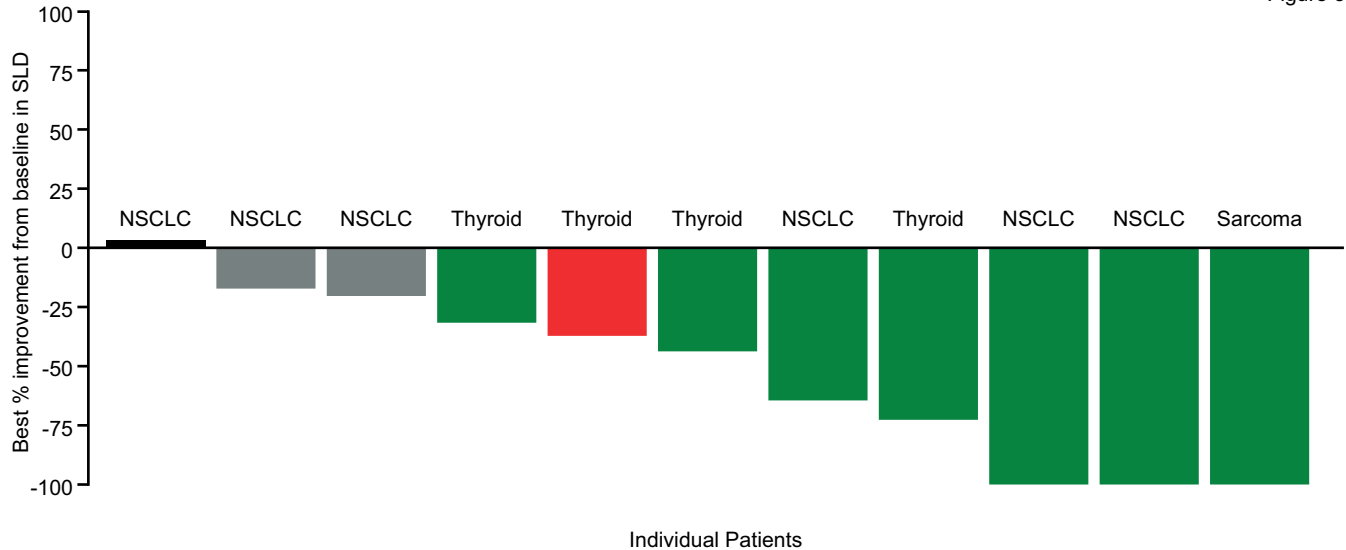
121 93 81 64 55 45 37 31 27 22 18 12 6 4 2 1 1



Patients at risk

121 108 99 94 86 71 59 46 37 35 26 20 16 9 6 2 1

Downloaded from clincancerres.aacrjournals.org on February 14, 2022. © 2022 American Association for Cancer Research.



Clinical Cancer Research

Updated Integrated Analysis of the Efficacy and Safety of Entrectinib in Patients with *NTRK* Fusion-Positive Solid Tumors

George D. Demetri, Filippo De Braud, Alexander Drilon, et al.

Clin Cancer Res Published OnlineFirst February 10, 2022.

Updated version	Access the most recent version of this article at: doi: 10.1158/1078-0432.CCR-21-3597
Supplementary Material	Access the most recent supplemental material at: http://clincancerres.aacrjournals.org/content/suppl/2022/01/21/1078-0432.CCR-21-3597.DC1
Author Manuscript	Author manuscripts have been peer reviewed and accepted for publication but have not yet been edited.

E-mail alerts	Sign up to receive free email-alerts related to this article or journal.
Reprints and Subscriptions	To order reprints of this article or to subscribe to the journal, contact the AACR Publications Department at pubs@aacr.org .
Permissions	To request permission to re-use all or part of this article, use this link http://clincancerres.aacrjournals.org/content/early/2022/02/02/1078-0432.CCR-21-3597 . Click on "Request Permissions" which will take you to the Copyright Clearance Center's (CCC) Rightslink site.