

# Roles of periodic breathing and isocapnic buffering period during exercise in heart failure

Piergiuseppe Agostoni<sup>1,2</sup>, Michele Emdin<sup>3,4</sup>,  
Fabiana De Martino<sup>1</sup>, Anna Apostolo<sup>1</sup>, Marco Masè<sup>5</sup>,  
Mauro Contini<sup>1</sup>, Cosimo Carriere<sup>5</sup>, Carlo Vignati<sup>1,2</sup> and Gianfranco Sinagra<sup>5</sup>

European Journal of Preventive  
Cardiology  
2020, Vol. 27(2S) 19–26  
© The European Society of  
Cardiology 2020



Article reuse guidelines:  
sagepub.com/journals-permissions  
DOI: 10.1177/2047487320952029  
journals.sagepub.com/home/cpr



## Abstract

In heart failure, exercise – induced periodic breathing and end tidal carbon dioxide pressure value during the isocapnic buffering period are two features identified at cardiopulmonary exercise testing strictly related to sympathetic activation. In the present review we analysed the physiology behind periodic breathing and the isocapnic buffering period and present the relevant prognostic value of both periodic breathing and the presence/absence of the identifiable isocapnic buffering period.

## Keywords

Heart failure, exercise, prognosis, periodic breathing, end tidal CO<sub>2</sub> pressure, anaerobic threshold, respiratory compensation point

Received 22 June 2020; accepted 3 August 2020

## Introduction

In heart failure (HF), exercise-induced periodic breathing (PB) – also known as oscillatory exercise ventilation (EOV) – is defined by an oscillatory pattern of ventilation which can last for the entire exercise or for a part of it. The isocapnic buffering period is the period of exercise between the anaerobic threshold and the respiratory compensation point (Figure 1). It is the part of exercise during which lactic acid is buffered by bicarbonates and pH is maintained. Its length depends on two factors: the amount of available carbon dioxide (CO<sub>2</sub>) and the threshold of arterial carbon dioxide tension (PaCO<sub>2</sub>) needed to increase ventilation by chemoreceptors. PB and the isocapnic buffering period are two features of ventilation during exercise highly dependent on chemoreflex regulation. Both carry relevant information on HF severity and prognosis. The presence of PB and of the isocapnic buffering period are mutually exclusive, but both can be absent. PB is related to an imbalance among circulation, muscle function and chemoreflex response, while end tidal carbon dioxide pressure (PetCO<sub>2</sub>) or, when measured, arterial partial pressure carbon dioxide (PaCO<sub>2</sub>),

during the isocapnic buffering period are mirrors of the sympathetic activity, and more specifically of the chemoreflex activity. The presence of PB suggests low cardiac output, limited CO<sub>2</sub> reserve and sympathetic overactivation; a low PetCO<sub>2</sub> during the isocapnic buffering period also suggests sympathetic overactivation, while buffering capacity, which translates into the amount of oxygen consumption (VO<sub>2</sub>) during the isocapnic buffering period, is directly related to exercise performance. In a maximal exercise, the absence of the isocapnic buffering period is indicative of reduced

<sup>1</sup>Centro Cardiologico Monzino, IRCCS, Italy

<sup>2</sup>Department of Clinical Sciences and Community Health, University of Milano, Italy

<sup>3</sup>Life Science Institute, Scuola Superiore Sant'Anna, Italy

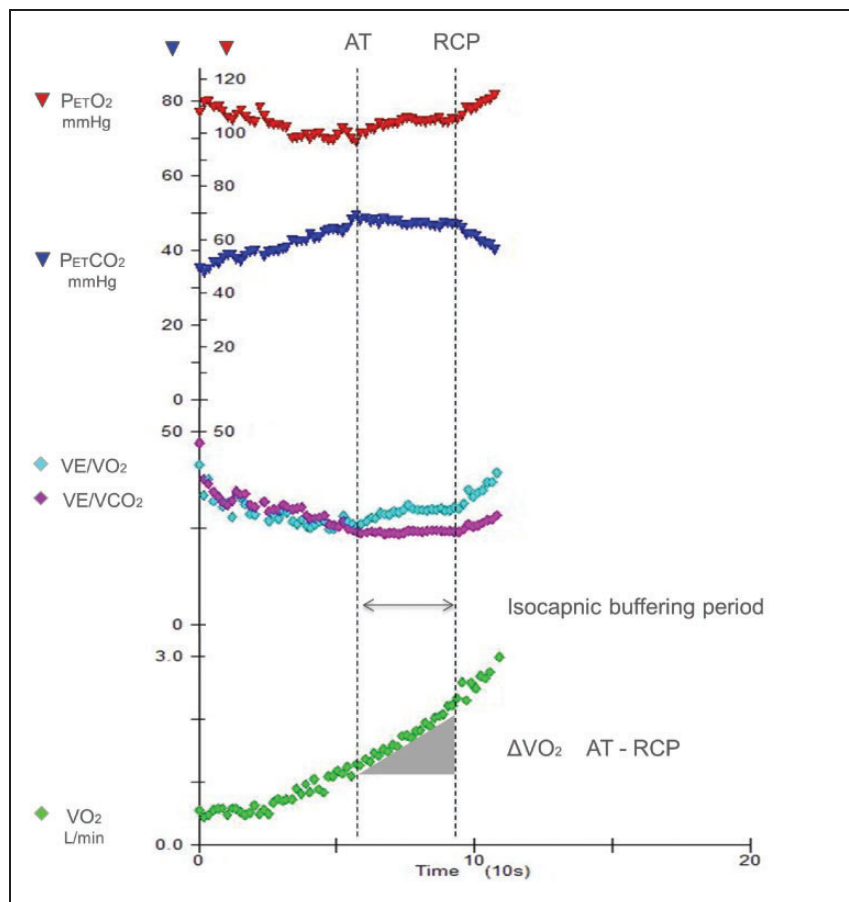
<sup>4</sup>Fondazione Gabriele Monasterio, CNR-Regione Toscana, Italy

<sup>5</sup>Cardiovascular Department, Ospedali Riuniti and University of Trieste, Italy

## Corresponding author:

Piergiuseppe Agostoni, Centro Cardiologico Monzino, IRCCS, Via Parea 4, 20138 Milan, Italy.

Email: piergiuseppe.agostoni@unimi.it



**Figure 1.** Ventilation, oxygen consumption ( $VO_2$ ) and minute ventilation ( $VE$ )/carbon dioxide production ( $VCO_2$ ) and derived parameter changes during exercise. The isocapnic buffering period is identified between the anaerobic threshold (AT) and the respiratory compensation point (RCP). Reproduced from Carriere et al.<sup>17</sup> with permission.

exercise performance and hyperventilation, either voluntary or related to environmental conditions, such as high altitude, or to specific disease, such as pulmonary hypertension.<sup>1-4</sup>

PB is characterised by cyclic fluctuations of minute ventilation ( $VE$ ), tidal volume,  $VO_2$ , carbon dioxide production ( $VCO_2$ ),  $PetCO_2$  and end tidal oxygen pressure ( $PetO_2$ ). PB may be either persistent along the entire exercise or present only in its early phases, usually up to the anaerobic threshold. PB is currently described in terms of amplitude and interval (length) of the single  $VE$  oscillation, and of the duration of the abnormal  $VE$  phenomenon during exercise, but a wide variability of PB patterns has been reported. To diagnose and describe PB, several descriptors have been utilised. With regard to cycle length, the following have been reported: (a) the distance between two nadirs; (b) the period of observed oscillation divided by the number of oscillations; and (c) the mean value of the interpeak interval for each cycle at rest.<sup>5</sup> The amplitude of the  $VE$  oscillations is calculated as: (a) the difference between the peak of the oscillation of

$VE$  and the average of the  $VE$  of the two surrounding nadirs; (b) the variation coefficient; (c) the correlation coefficient; and (d) a percentage of the mean of the rest  $VE$ .<sup>5</sup> For the definition of PB presence, a duration of at least two-thirds of the entire exercise protocol, or 60% or greater, or 50% or greater have been proposed.<sup>5</sup> Therefore, no gold standard exists so far, and an accepted PB definition is still lacking, which makes comparisons between studies difficult.<sup>6</sup> Of note, the cardiopulmonary exercise testing (CPET) data averaging system used may cancel the evidence of PB. Thus, whenever the presence of PB is suspected, breath-by-breath data evaluation is needed as the first step of CPET analysis. With regard to PB, one of the major unsolved questions is what oscillates first between ventilation and circulation; in other words, whether it is ventilation or circulation that leads to oscillation. A few pieces of evidence suggest that oscillation in the blood flow is the first initiating mechanism. Pioneering studies by Ben Dov et al.<sup>7</sup> have demonstrated that, when aligning  $VO_2$ ,  $VCO_2$  and  $VE$ ,  $VO_2$  oscillation anticipates  $VCO_2$  and  $VE$  oscillations. Of note,

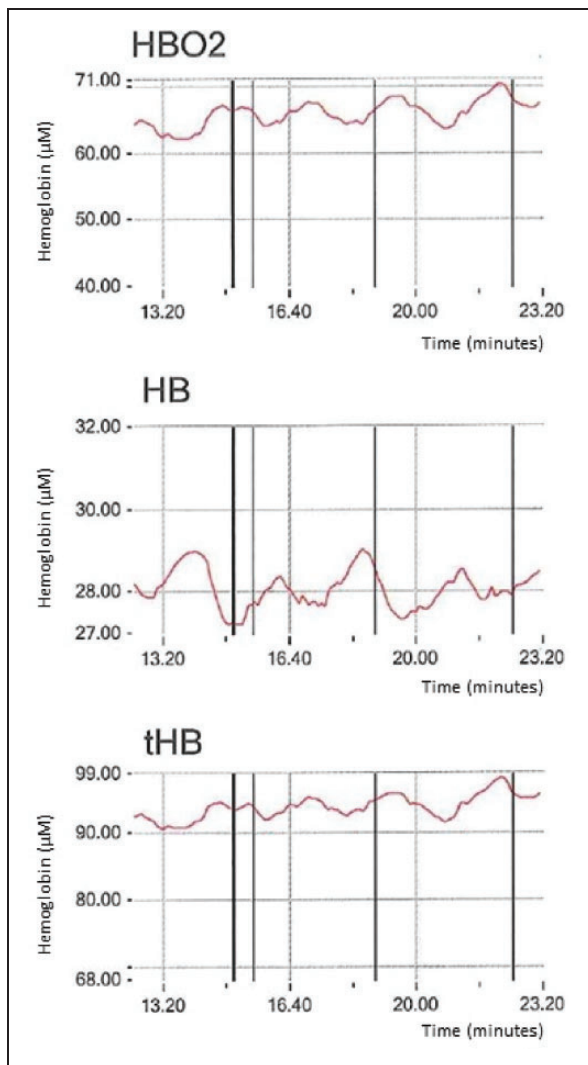
oscillation of muscle blood flow can be observed in PB patients by means of near infrared spectroscopy in the skeletal muscle.<sup>8</sup> Figure 2 shows oscillation of total haemoglobin, oxygenated haemoglobin (O<sub>2</sub>Hb) and deoxygenated haemoglobin (desatHb) at rest in a patient with severe HF. Of note, desatHb oscillation anticipates that of O<sub>2</sub>Hb. Two physiological explanations for the observed intramuscular haemoglobin behaviour can be advanced, which are not mutually exclusive but are likely both to be present. The first is that phasic oscillation of haemoglobin and its components O<sub>2</sub>Hb and desatHb is due to cardiac output oscillation, and the second is that haemoglobin desaturation increases local nitric oxide and therefore

the observed haemoglobin changes are due, at least in part, to cycling of muscle capacitance vessels. Of note, the period (length) of cycling of haemoglobin in the muscles seems to be greater than that observed in VE.

### Exercise-induced periodic breathing and low PetCO<sub>2</sub> during isocapnic buffering period in severe HF

A few data are available on the prevalence of exercise-induced PB in patients with HF.<sup>9–12</sup> In 7004 systolic HF patients from the MECKI score dataset,<sup>13,14</sup> PB was present in 16.8% of cases, and mainly in those with the most impaired exercise capacity. In particular, PB was observed in 25.2% of patients with peak VO<sub>2</sub> less than 12 ml/min/kg, 16.4% of patients with peak VO<sub>2</sub> ranging between 12 and 16 ml/min/kg and 9.6% of those with peak VO<sub>2</sub> greater than 16 ml/min/kg. Of note, there is a gender-specific PB behaviour, with a lower number of women with PB compared to men, regardless of HF severity. With regard to the total MECKI score population, at present 7004 cases, PB is present in 13% of female and 18% of male patients. A similar gender-specific PB incidence was reported in HF patients during sleep and in normal subjects at high altitude.<sup>9,15,16</sup> There is no accepted explanation for this phenomenon, although differences in peripheral muscle CO<sub>2</sub> production, in apnoeic CO<sub>2</sub> threshold or in the chemoreflex response to partial pressure oxygen (pO<sub>2</sub>) and pCO<sub>2</sub>, probably related to the effect of sex hormones, are possibly responsible for the observed gender differences.

The isocapnic buffering period was identified in 39% of cases in a sizable population ( $n = 1995$ ) derived from the MECKI score dataset by Carriere et al.<sup>17</sup> HF patients with an identified respiratory compensation point (601 out of 1896 cases) were grouped according to peak VO<sub>2</sub>. PetCO<sub>2</sub> during the isocapnic buffering period was lower in patients with more severe HF, and increased as functional capacity improved: lower peak VO<sub>2</sub> tertile ( $n = 110$ , peak VO<sub>2</sub>  $10.9 \pm 1.7$  ml/min/kg, PetCO<sub>2</sub> during isocapnic buffering period  $33.0 \pm 4.6$  mmHg); middle peak VO<sub>2</sub> tertile ( $n = 222$ , peak VO<sub>2</sub>  $15.0 \pm 1.2$  ml/min/kg, PetCO<sub>2</sub> during isocapnic buffering period  $35.0 \pm 4.2$  mmHg); higher peak VO<sub>2</sub> tertile ( $n = 269$ , peak VO<sub>2</sub>  $21.0 \pm 3.6$  ml/min/kg, PetCO<sub>2</sub> during isocapnic buffering period  $37.5 \pm 4.9$  mmHg,  $P < 0.0001$ ). These data speak in favour of a progressively increasing chemoreflex activity in parallel with increasing HF severity.



**Figure 2.** Measurements of near infrared spectroscopy (NIRS) data at rest in a patient with periodic breathing at rest. Fluctuation of oxygenated haemoglobin (HBO<sub>2</sub>), de-oxygenated haemoglobin (HB) and total haemoglobin (tHB) are reported. The cycle length is approximately 130 seconds.

## Physiology of exercise-induced periodic breathing in HF and of the isocapnic buffering period

Little is known about the physiology of exercise-induced PB. Three factors play a pivotal role in exercise-induced PB in HF: hyperventilation, low cardiac output leading to increased circulatory delay, and cerebrovascular reactivity to CO<sub>2</sub>.<sup>18</sup> Other possible poorly explored factors influencing PB in HF are: the relation between PB and Cheyne–Stokes respiration (CSR) at rest,<sup>9,10</sup> as well as the effect of posture, which has recently been shown to influence the presence of CSR at rest (a hypothesis which deserves further investigation could be that only those patients having CSR when upright would develop PB).<sup>19</sup>

Hyperventilation is part of the increased sympathetic activity frequently observed in HF, and it is due to the increased stimulation of intrapulmonary receptors and of chemo and metaboreceptors.<sup>20</sup> Due to hyperventilation, PaCO<sub>2</sub> falls below the respiratory threshold, so that breath stops due to temporary absence of central drive to respiratory muscles, which ends when an increase of PaCO<sub>2</sub> promotes ventilation with a further period of hyperventilation. Moreover, HF patients have a reduced cerebrovascular reactivity to CO<sub>2</sub> further increasing breathing instability.<sup>18</sup> The increased circulatory delay, which is due to a low cardiac output, is considered another factor responsible for the occurrence of exercise-induced PB. Indeed, circulatory delay leads to a temporary misalignment of the chemical signals (low or high PaCO<sub>2</sub>) to the respiratory response (increased or reduced ventilation).<sup>18,21</sup> Notably, albeit frequently suggested, the role of low cardiac output in the pathogenesis of exercise-induced PB presently has almost no scientific evidence. Indeed, no significant differences in cardiac output or in the circulatory delay from lungs to peripheral receptors have been found between HF patients with and without exercise-induced PB.<sup>22,23</sup> Similarly, no correlation exists between cardiac output and circulatory delay at rest in patients with severe HF. However, there are no data on the relationship between circulatory delay and cardiac output during physical activity. In a recent series of HF patients who successfully underwent implantation of a left ventricular assist device (LVAD),<sup>24</sup> resting cardiac output and circulatory delay were found to be unrelated to each other both at low LVAD pump speed and at high pump speed; of note, these data were obtained at rest and no information is available during exercise. Interestingly, in a group of 15 HF patients with LVAD, exercise-induced PB occurred in nine cases with LVAD at pump speed 2 and in five patients at pump speed 4. Moreover, the presence of exercise-induced PB in this

series of patients was associated with a lower cardiac output at rest. A reduction in exercise-induced PB due to HF improvement was reported by Ribeiro et al., who showed that exercise-induced PB disappeared after HF improvement in a series of five patients.<sup>25</sup> Another observation about PB whose cause is still undefined is that, in approximately 60% of cases, PB disappears during a progressive effort before exhaustion. Among the three main causes of PB – hyperventilation, low cardiac output and cerebrovascular reactivity to CO<sub>2</sub> – low cardiac output is the only one that should change during exercise, shortening the delay of the signal between alveoli and carotid chemoreceptors. It must be recognised that this is pure speculation, albeit physiologically plausible. Of note, Schmid et al. showed that, in 52% of patients in whom exercise-induced PB ceased during exercise; that is, before the end of exercise, in the last part of exercise when ventilation cycling ceased the VO<sub>2</sub> versus work relationship increased, it was still in 24% of cases, and it decreased in 24% of cases.<sup>26</sup> Notably, the evaluation of the VO<sub>2</sub> versus work relationship allows an understanding of the amount of O<sub>2</sub> delivery to the working muscle, because a reduction of this relationship during exercise is suggestive of a reduction of cardiac output, either due to exercise-induced cardiac ischaemia or to mitral insufficiency.<sup>27,28</sup> An increase in the VO<sub>2</sub> versus work relationship during exercise is a rare event, and it was only reported in patients in whom PB ceased during exercise, specifically in approximately 50% of cases. This implies a higher O<sub>2</sub> delivery to the working muscles, possibly due to a reduction of the work of breathing. In other words, PB seems to be associated with an increased work of breathing, and its disappearance allows an increase of VO<sub>2</sub> delivery to the exercising muscles so that external work increases. Other aspects of PB physiology are of interest.

For example, there are several pieces of evidence that exercise-induced PB can be eliminated inducing hyperventilation by adding a further ventilatory stimulus such as hypoxia, inhalation of CO<sub>2</sub>, or dead space increase. Indeed, if a hypoxic stimulus is suddenly added during constant low workload exercise, PB disappears. Similarly, Apostolo et al.<sup>29</sup> showed that, when 2% CO<sub>2</sub> is inhaled, PB suddenly ceases. However, if the added respiratory stimulus is smaller, as with 1% CO<sub>2</sub> instead of 2% CO<sub>2</sub>, periodic breathing persists. Finally, when an external dead space is added, PB disappears early during exercise or it does not appear at all, according to the amount of added dead space, 250 or 500 ml, respectively.<sup>30</sup> However, added dead space is associated with a lower exercise performance probably due to a further increase of the work of breathing.

Similarly, the physiology of the isocapnic buffering period has been studied but rarely considered in the

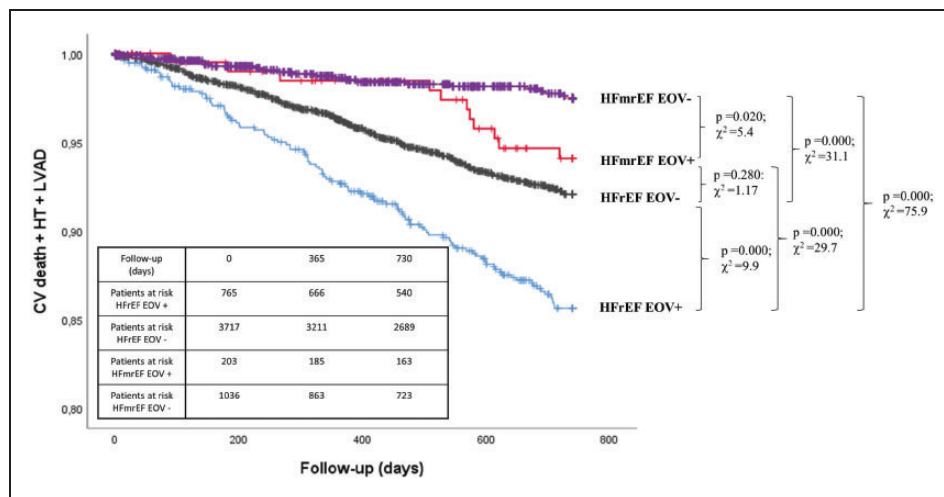
clinical field. The absence of isocapnic buffering has a strong negative prognostic power. In a recent analysis on patients belonging to the MECKI score dataset, Carriere et al.<sup>17</sup> also showed that the amount of VO<sub>2</sub> during the isocapnic buffering period is directly related to exercise performance in HF patients. Accordingly, a high VO<sub>2</sub> increase during the isocapnic buffering period implies a limited CO<sub>2</sub> production due to lactic acid buffering, but also a relevant amount of bicarbonates for H<sup>+</sup> buffering. The value of PetCO<sub>2</sub> during the isocapnic buffering period reveals chemoreflex activation – the lower the PetCO<sub>2</sub>, the higher the reflex activation. Of note, in HF, PetCO<sub>2</sub> levels during the isocapnic buffering period can be modulated by β-blockers. In particular, β1–β2 blockers cause a higher PetCO<sub>2</sub> during the isocapnic buffering period by reducing chemoreflex activity.<sup>31,32</sup>

### Prognostic role of exercise-induced periodic breathing and of the isocapnic buffering period

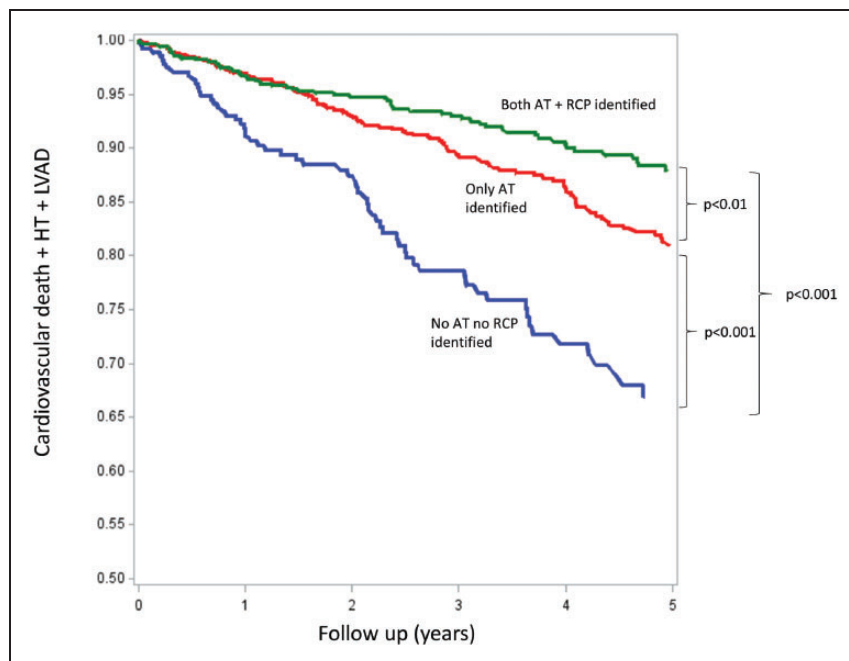
PB is a robust CPET risk index in distinct HF cohorts,<sup>9,10,12,33–38</sup> including heart transplantation candidates, and in patients chronically treated with β-blockers. PB and several CPET-derived parameters have proved to be predictive in HF,<sup>39</sup> but most have been studied in binary analyses, considering risk indexes in isolation, disregarding the potential value of combining variables. In addition, few observations have been validated yet. So far, only peak VO<sub>2</sub>, VE/VCO<sub>2</sub>

slope, and PB (representing the so-called 2008 European Society of Cardiology (ESC) model) have been validated.<sup>40</sup> Hence, albeit difficult to compute properly, PB should always be taken into account during CPET, if macroscopically evident at visual or analytical inspection. Recently, Rovai et al.<sup>41</sup> re-analysed the MECKI score database and not only confirmed a relevant prognostic role of PB in HF patients but also showed that PB was equally present in patients with heart failure with reduced ejection fraction (HFrEF) and heart failure with mid-range ejection fraction (HFmrEF). Of note, PB maintained its negative prognostic role in HFmrEF patients, albeit only after 18 months of follow-up. Indeed, for short follow-up periods, no prognostic differences between HFmrEF patients with and without PB were observed (Figure 3).<sup>41</sup> In brief, PB should be considered as an ominous sign in HF.

Limited information is available on the prognostic role of the isocapnic buffering period and on measurements obtained during the isocapnic buffering period. Indeed, in an analysis of the MECKI score dataset, Carriere et al.<sup>42</sup> showed relevant differences in prognosis in subjects in whom the anaerobic threshold and the respiratory compensation point were not identified (Figure 4). This suggests that the persistence of a normal exercise physiology bears a relevant prognostic impact regardless of the values of VO<sub>2</sub>, VCO<sub>2</sub>, or VE. No data are presently available on the prognostic role of PetCO<sub>2</sub> during the isocapnic buffering period. However, PetCO<sub>2</sub> during the isocapnic buffering



**Figure 3.** Survival and presence of exercise oscillatory ventilation in patients with heart failure with reduced ejection fraction (HFrEF) and in patients with heart failure with mid-range ejection fraction (HFmrEF). Kaplan–Meier survival curves of study endpoint (cardiovascular death, urgent heart transplant or left ventricular assist device (LVAD) implantation) stratified according to the presence or absence of exercise oscillatory ventilation (EOV+ and EOV-) in patients with HFrEF and in patients with HFmrEF. Comparison among the groups (HFmrEF EO- vs. HFmrEF EO+:  $P=0.020$ ,  $\chi^2=5.4$ ; HFmrEF EO- vs. HFrEF EO-:  $P=0.000$ ,  $\chi^2=31.1$ ; HFmrEF EO- vs. HFrEF EO+:  $P=0.000$ ;  $\chi^2=75.9$ ; HFmrEF EO+ vs. HFrEF EO-:  $P=0.280$ ,  $\chi^2=1.17$ ; HFmrEF EO+ vs. HFrEF EO+:  $P=0.000$ ,  $\chi^2=29.7$ ; HFrEF EO- vs. HFrEF EO+:  $P=0.000$ ;  $\chi^2=9.9$ ). Reproduced from Rovai et al.<sup>41</sup> with permission.



**Figure 4.** Five-year survival, assessed by the composite of cardiovascular death, urgent heart transplantation (HT) and left ventricular assist device (LVAD) in groups 1 (neither anaerobic threshold (AT) nor respiratory compensation point (RCP) detectable), 2 (detectable AT but no RCP) and 3 (both AT and RCP detectable), respectively. Reproduced from Carriere et al.<sup>42</sup> with permission.

period is directly associated with peak  $\text{VO}_2$ . Therefore, its prognostic power should simply be a confirmatory observation, which has the major advantage of being observed even if the true peak  $\text{VO}_2$  has not been reached.

## Conclusions

Exercise-induced PB and the analysis of the respiratory compensation point both bear relevant information on ventilation during exercise and both deserve attention when interpreting a CPET. Indeed, both show data associated with prognosis and may provide information useful to guide HF treatment or LVAD set-up. More studies are needed to assess these specific ventilatory patterns in specific sets of HF patients as well as the effects of therapy on them.

## Author contribution

PA, ME and GS contributed to the conception or design of the work. PA and GS drafted the manuscript. ME, FDM, AA, MM, MC and CC critically revised the manuscript. All authors gave final approval and agree to be accountable for all aspects of the work ensuring integrity and accuracy.

## Declaration of conflicting interests

The author(s) declared no potential conflicts of interest with respect to the research, authorship, and/or publication of this article.

## Funding

The author(s) received no financial support for the research, authorship, and/or publication of this article.

## References

1. Agostoni P, Valentini M, Magri D, et al. Disappearance of isocapnic buffering period during increasing work rate exercise at high altitude. *Eur J Cardiovasc Prev Rehabil* 2008; 15: 354–358.
2. Whipp BJ, Davis JA and Wasserman K. Ventilatory control of the ‘isocapnic buffering’ region in rapidly incremental exercise. *Respir Physiol* 1989; 76: 357–367.
3. Weatherald J, Farina S, Bruno N, et al. Cardiopulmonary exercise testing in pulmonary hypertension. *Ann Am Thorac Soc* 2017; 14: S84–S92.
4. He S, Hu X, Cao Y, et al. How to relieve breathing difficulties in high-temperature conditions for heart disease patients. *Eur J Prev Cardiol* 2018; 25: 976.
5. Cornelis J, Beckers P, Vanroy C, et al. An overview of the applied definitions and diagnostic methods to assess exercise oscillatory ventilation – a systematic review. *Int J Cardiol* 2015; 190: 161–169.
6. Dhakal BP, Murphy RM and Lewis GD. Exercise oscillatory ventilation in heart failure. *Trends Cardiovasc Med* 2012; 22: 185–191.
7. Ben-Dov I, Sietsema KE, Casaburi R, et al. Evidence that circulatory oscillations accompany ventilatory oscillations during exercise in patients with heart failure. *Am Rev Respir Dis* 1992; 145: 776–781.
8. Mantegazza V, Contini M, Botti M, et al. Improvement in exercise capacity and delayed anaerobic metabolism

- induced by far-infrared-emitting garments in active healthy subjects: a pilot study. *Eur J Prev Cardiol* 2018; 25: 1744–1751.
9. Corra U, Pistono M, Mezzani A, et al. Sleep and exertional periodic breathing in chronic heart failure: prognostic importance and interdependence. *Circulation* 2006; 113: 44–50.
  10. Corra U, Giordano A, Bosimini E, et al. Oscillatory ventilation during exercise in patients with chronic heart failure: clinical correlates and prognostic implications. *Chest* 2002; 121: 1572–1580.
  11. Francis DP, Davies LC, Piepoli M, et al. Origin of oscillatory kinetics of respiratory gas exchange in chronic heart failure. *Circulation* 1999; 100: 1065–1070.
  12. Sun XG, Hansen JE, Beshai JF, et al. Oscillatory breathing and exercise gas exchange abnormalities prognosticate early mortality and morbidity in heart failure. *J Am Coll Cardiol* 2010; 55: 1814–1823.
  13. Agostoni P, Corra U, Cattadori G, et al. Metabolic exercise test data combined with cardiac and kidney indexes, the MECKI score: a multiparametric approach to heart failure prognosis. *Int J Cardiol* 2013; 167: 2710–2718.
  14. Carubelli V, Metra M, Corra U, et al. Exercise performance is a prognostic indicator in elderly patients with chronic heart failure – application of metabolic exercise cardiac kidney indexes score. *Circ J* 2015; 79: 2608–2615.
  15. Lombardi C, Meriggi P, Agostoni P, et al. High-altitude hypoxia and periodic breathing during sleep: gender-related differences. *J Sleep Res* 2013; 22: 322–330.
  16. Sin DD, Fitzgerald F, Parker J, et al. Risk factors for central and obstructive sleep apnea in 450 men and women with congestive heart failure. *Am J Respir Crit Care Med* 1999; 160: 1101–1106.
  17. Carriere C, Corra U, Piepoli M, et al. Isocapnic buffering period: From physiology to clinics. *Eur J Prev Cardiol* 2019; 26: 1107–1114.
  18. Costanzo MR, Khayat R, Ponikowski P, et al. Mechanisms and clinical consequences of untreated central sleep apnea in heart failure. *J Am Coll Cardiol* 2015; 65: 72–84.
  19. Giannoni A, Gentile F, Sciarrone P, et al. Upright Cheyne–Stokes respiration in patients with heart failure. *J Am Coll Cardiol* 2020; 75: 2934–2946.
  20. Yu J, Zhang JF and Fletcher EC. Stimulation of breathing by activation of pulmonary peripheral afferents in rabbits. *J Appl Physiol (1985)* 1998; 85: 1485–1492.
  21. Pryor WW. Cheyne–Stokes respiration in patients with cardiac enlargement and prolonged circulation time. *Circulation* 1951; 4: 233–238.
  22. Javaheri S, Parker TJ, Liming JD, et al. Sleep apnea in 81 ambulatory male patients with stable heart failure. Types and their prevalences, consequences, and presentations. *Circulation* 1998; 97: 2154–2159.
  23. Bradley TD and Floras JS. Sleep apnea and heart failure: Part II: central sleep apnea. *Circulation* 2003; 107: 1822–1826.
  24. Vignati C, Apostolo A, Cattadori G, et al. Lvad pump speed increase is associated with increased peak exercise cardiac output and vo<sub>2</sub>, postponed anaerobic threshold and improved ventilatory efficiency. *Int J Cardiol* 2017; 230: 28–32.
  25. Ribeiro JP, Knutzen A, Rocco MB, et al. Periodic breathing during exercise in severe heart failure. Reversal with milrinone or cardiac transplantation. *Chest* 1987; 92: 555–556.
  26. Schmid JP, Apostolo A, Antonioli L, et al. Influence of exertional oscillatory ventilation on exercise performance in heart failure. *Eur J Cardiovasc Prev Rehabil* 2008; 15: 688–692.
  27. Bussotti M, Apostolo A, Andreini D, et al. Cardiopulmonary evidence of exercise-induced silent ischaemia. *Eur J Cardiovasc Prev Rehabil* 2006; 13: 249–253.
  28. Belardinelli R, Lacalaprice F, Carle F, et al. Exercise-induced myocardial ischaemia detected by cardiopulmonary exercise testing. *Eur Heart J* 2003; 24: 1304–1313.
  29. Apostolo A, Agostoni P, Contini M, et al. Acetazolamide and inhaled carbon dioxide reduce periodic breathing during exercise in patients with chronic heart failure. *J Cardiac Fail* 2014; 20: 278–288.
  30. Agostoni P, Apostolo A and Albert RK. Mechanisms of periodic breathing during exercise in patients with chronic heart failure. *Chest* 2008; 133: 197–203.
  31. Contini M, Apostolo A, Cattadori G, et al. Multiparametric comparison of CARvedilol, vs. NEbivolol, vs. BISoprolol in moderate heart failure: the CARNEBI trial. *Int J Cardiol* 2013; 168: 2134–2140.
  32. Agostoni P, Apostolo A, Cattadori G, et al. Effects of beta-blockers on ventilation efficiency in heart failure. *Am Heart J* 2010; 159: 1067–1073.
  33. Arena R, Myers J, Abella J, et al. Prognostic value of timing and duration characteristics of exercise oscillatory ventilation in patients with heart failure. *J Heart Lung Transplant* 2008; 27: 341–347.
  34. Corra U, Mezzani A, Giordano A, et al. Exercise haemodynamic variables rather than ventilatory efficiency indexes contribute to risk assessment in chronic heart failure patients treated with carvedilol. *Eur Heart J* 2009; 30: 3000–3006.
  35. Guazzi M, Arena R, Ascione A, et al. Exercise oscillatory breathing and increased ventilation to carbon dioxide production slope in heart failure: an unfavorable combination with high prognostic value. *Am Heart J* 2007; 153: 859–867.
  36. Guazzi M, Boracchi P, Arena R, et al. Development of a cardiopulmonary exercise prognostic score for optimizing risk stratification in heart failure: the (P)e(R)i(O)dic (B)reathing during (E)xercise (PROBE) study. *J Cardiac Fail* 2010; 16: 799–805.
  37. Guazzi M, Raimondo R, Vicenzi M, et al. Exercise oscillatory ventilation may predict sudden cardiac death in heart failure patients. *J Am Coll Cardiol* 2007; 50: 299–308.
  38. Leite JJ, Mansur AJ, de Freitas HF, et al. Periodic breathing during incremental exercise predicts mortality in patients with chronic heart failure evaluated for cardiac transplantation. *J Am Coll Cardiol* 2003; 41: 2175–2181.

39. Corra U, Piepoli MF, Adamopoulos S, et al. Cardiopulmonary exercise testing in systolic heart failure in 2014: the evolving prognostic role: a position paper from the Committee on Exercise Physiology and Training of the Heart Failure Association of the ESC. *Eur J Heart Fail* 2014; 16: 929–941.
40. Corra U, Giordano A, Mezzani A, et al. Cardiopulmonary exercise testing and prognosis in heart failure due to systolic left ventricular dysfunction: a validation study of the European Society of Cardiology Guidelines and Recommendations (2008) and further developments. *Eur J Prev Cardiol* 2012; 19: 32–40.
41. Rovai S, Corra U, Piepoli M, et al. Exercise oscillatory ventilation and prognosis in heart failure patients with reduced and mid-range ejection fraction. *Eur J Heart Fail* 2019; 21: 1586–1595.
42. Carriere C, Corra U, Piepoli M, et al. Anaerobic threshold and respiratory compensation point identification during cardiopulmonary exercise tests in chronic heart failure. *Chest* 2019; 156: 338–347.