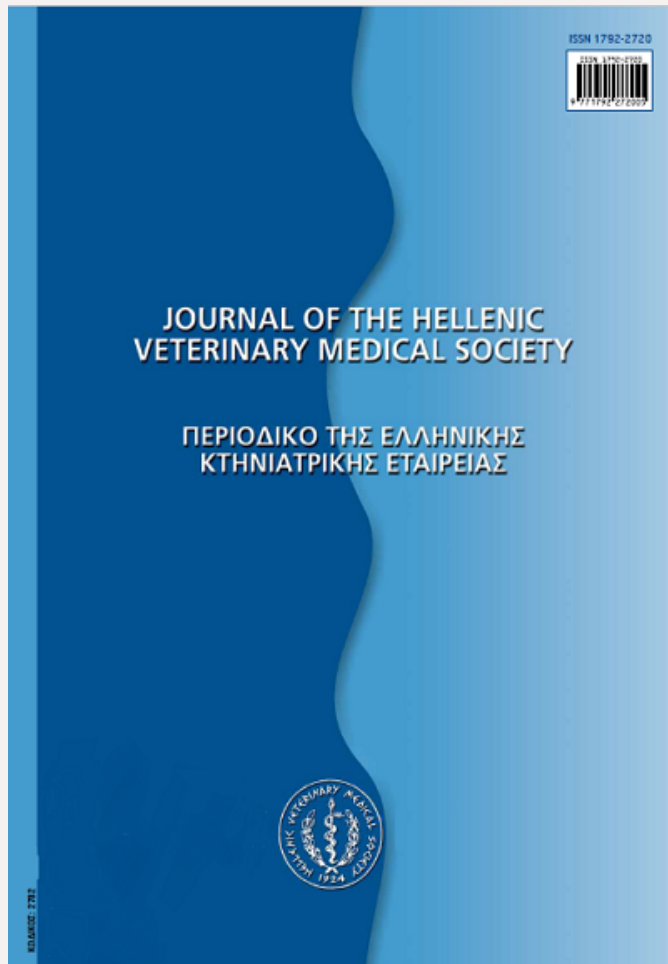


## Journal of the Hellenic Veterinary Medical Society

Vol. 56, 2005



### Behaviour and production of fattening rabbits in colony cages, with and without environmental enrichment

- LUZI E. Istituto di Zootecnica,  
Facoltà di Medicina  
Veterinaria
- MARTINO P. Dipartimento di Patologia  
Animale, Igiene e Sanità  
Pubblica, Facoltà di  
Medicina Veterinaria
- VERGA M. Istituto di Zootecnica,  
Facoltà di Medicina  
Veterinaria

<https://doi.org/10.12681/jhvms.15089>

Copyright © 2017 E. LUZI, P. A. MARTINO, M.  
VERGA



#### To cite this article:

LUZI, E., MARTINO, P., & VERGA, M. (2017). Behaviour and production of fattening rabbits in colony cages, with and without environmental enrichment. *Journal of the Hellenic Veterinary Medical Society*, 56(4), 301-306.  
doi:<https://doi.org/10.12681/jhvms.15089>

## Συμπεριφορά και παραγωγή παχυ- νόμενων κονίκλων σε κελιά με και χωρίς εμπλουτισμό των κλουβιών

Luzi F.<sup>1</sup>, Martino P.A.<sup>2</sup>, Verga M.<sup>1</sup>

**\*ΠΕΡΙΛΗΨΗ.** Το σύστημα εκτροφής στα εντακτικές εκτροφής κουνέλια είναι να τοποθετούνται τα ζώα σε κλουβιά των δύο θέσεων χωρίς κανέναν εμπλουτισμό του κλουβιού. Το σύστημα προκαλεί stress στα ζώα οφειλόμενο σε ανία. Για να μειωθεί το stress είναι ωφέλιμο να τοποθετείται μέσα στο κλουβί κάποιο αντικείμενο για να το δαγκώνουν. Ο σκοπός της παρούσας έρευνας ήταν να μελετηθεί η επίδραση του εμπλουτισμού του περιβάλλοντος (η παρουσία ενός κομματιού ξύλου μέσα στο κλουβί) στη γενική συμπεριφορά και υγεία των παχυνόμενων κονίκλων, λ.χ. στην παρουσία τραυματισμών του σώματος κατά τη σφαγή. Το πείραμα έγινε σε μια εμπορική εκτροφή που βρίσκεται στη Βόρεια Ιταλία (περιοχή Piemonte) κατά τη διάρκεια του καλοκαιριού του έτους 2002. Ο αερισμός και η φωτοπερίοδος ήταν κάτω από φυσικές συνθήκες περιβάλλοντος. Τα ζώα στεγάζονταν σε (12 κλουβιά, 8 ζώα ανά κλουβί) κλουβιά διαστάσεων 50X120X40 cm (πυκνότητα 0,750 cm<sup>2</sup> ανά ζώο), με ημι-ανοικτό σύστημα αερισμού. Η συμπεριφορά των ζώων καταγραφόταν σε video κατά τη διάρκεια 72 ωρών (24 ώρες για 3 ημέρες) στις 55, 70 και 83 ημέρες της ηλικίας τους. Η καταγραφή αφορούσε σε 48 κονίκλους για κάθε επέμβαση: στις ομάδες με εμπλουτισμό και χωρίς εμπλουτισμό του περιβάλλοντος. Τα ζώα ζυγίζονταν στις 55, 70 και 85 ημέρες. Το σωματικό βάρος και η αύξησή του αξιολογήθηκαν. Ο ημερήσιος ρυθμός ανάπτυξης (49,6±2,7g vs 46,18±5,6g) και το βάρος σφαγής αξιολογήθηκαν (2973,18±34,09g vs 2834,68±34,45g, P≤0.01) και ήταν βαρύτερα τα ζώα με εμπλουτισμένο το κλουβί από εκείνα χωρίς εμπλουτισμό. Η απόδοση σφάγιου ήταν διαφορετική μεταξύ των δυο ομάδων (62,2 %) και δεν είχαν εμφανιστεί τραυματισμοί στο δέρμα των ζώων και των δυο ομάδων κατά τη σφαγή. Την πρώτη περίοδο (ηλικίας 55 ημερών) τα ζώα με εμπλουτισμένο κλουβί ήταν περισσότερο δραστήρια από εκείνα χωρίς εμπλουτισμό (μάρτυρες). Η συμπεριφορά στο να ξαπλώνουν και να τεντώνονται ήταν σημαντικά χαμηλότερη (P<0.001 και P<0.05, αντίστοιχα). Επιπλέον, τα ζώα στο εμπλουτισμένο κλουβί έδειξαν τάση για καλύτερη συμπεριφορά κατά τη διατροφή τους, ίσως λόγω υψηλής γενικής δραστηριότητας. Στη δεύτερη περίοδο (ηλικίας

## Behaviour and production of fattening rabbits in colony cages, with and without environmental enrichment

Luzi F.<sup>1</sup>, Martino P.A.<sup>2</sup>, Verga M.<sup>1</sup>

**ABSTRACT.** In intensive rabbit husbandry systems animals are usually housed in 2 place-cages without any kind of environmental enrichment. This system may induce stress due to boredom. To reduce stress, both colony cages and the presence of something to gnaw inside the cage may be useful. The aim of this research was to test the effect of environmental enrichment (presence of a piece of wood inside the cage) on performance and health of fattening rabbits, i.e. presence of body injuries. This trial has been carried out in a commercial farm, located in Northern of Italy (Piemonte region), during the summer of year 2002. The ventilation and the photoperiod were under natural conditions. Animals were housed in colony cages (12 cages, 8 animals per cage; cage size: 50x120x40 cm; density: 0.750 cm<sup>2</sup> per animal) in semi plain-air conditions. Animals' behaviour was video-recorded during 72 hours (24 hours for 3 days) at 55, 70 and 83 days of age. The video recording covered 48 rabbits for each treatment: environmental enrichment and control group. Animals were weighted at 55, 70, 85 days; the carcass weight and yield were also analysed. Daily weight gain (49.6±2.7g vs 46.18±5.6g) and weight at slaughtering (2973.18±34.09g vs 2834.68±34.45g, P≤0.01) were heavier in enriched cages than in control groups. The carcass yield was not different between the groups (62.2%); no injuries were detected on the carcass surface during the slaughter processing on both the environmental and control groups. In the first period (55 days of age) the enriched rabbits were more active than the control ones; in detail, the behaviours lying and lying stretched were significantly lower (P<0.001 and P<0.05, respectively). Furthermore, the enriched rabbits showed a trend to a better feeding activity, maybe linked to a total higher activity. In the second (70 days of age) and third period (83 days of age) the enriched rabbits showed higher feeding behaviour and caecotrophy levels (P<0.05). In the present research, the results show that to give rabbits a hanging wood from the cage ceiling may improve their biological functioning and increase their growth rate without deteriorate their health status. As regards the behaviour of rabbit caged, the results showed that the

<sup>1</sup> Istituto di Zootechnica – Facoltà di Medicina Veterinaria,  
via G. Celoria, 10 – 20133 Milano - Italy

<sup>2</sup> Dipartimento di Patologia Animale, Igiene e Sanità Pubblica –  
Facoltà di Medicina Veterinaria,  
via G. Celoria, 10 – 20133 Milano – Italy

Ημερομηνία υποβολής: 04.07.2005  
Ημερομηνία εγγραφής: 30.11.2005

<sup>1</sup> Istituto di Zootechnica – Facoltà di Medicina Veterinaria,  
via G. Celoria, 10 – 20133 Milano - Italy

<sup>2</sup> Dipartimento di Patologia Animale, Igiene e Sanità Pubblica –  
Facoltà di Medicina Veterinaria,  
via G. Celoria, 10 – 20133 Milano – Italy

Submission date: 04.07.2005  
Approval date: 30.11.2005

κίας 70 ημερών) και στην τρίτη περίοδο (ηλικίας 83 ημερών) τα ζώα στα εμπλουτισμένα κλουβιά έδειξαν εντονότερη διατροφική συμπεριφορά και επίπεδα τυφλοτροφίας ( $P < 0.05$ ). Στην παρούσα έρευνα τα αποτελέσματα δείχνουν ότι το να κρεμάσεις ένα κομμάτι ξύλου από την οροφή του κλουβιού στα κουνέλια μπορεί να βελτιώσει τη φυσιολογική τους λειτουργικότητα, να αυξήσει το βάρος του σώματός τους, χωρίς όμως να μειώσει το επίπεδο υγείας τους. Ως αποτέλεσμα, ο εμπλουτισμός του κλουβιού μπορεί να βελτιώσει τη συμπεριφορά και την ευζωία των κουνελιών που διατηρούνται σε κλουβιά.

**Λέξεις ευρετηρίασης:** κουνέλια, εμπλουτισμός περιβάλλοντος, συμπεριφορά, παραγωγή

Απόδοση της περίληψης στην ελληνική γλώσσα από **Ε. Ξυλούρη**, Τμήμα Ζωικής Παραγωγής, Γεωπονικό Πανεπιστήμιο Αθηνών, Ιερά Οδός 75, 118 55, Αθήνα.

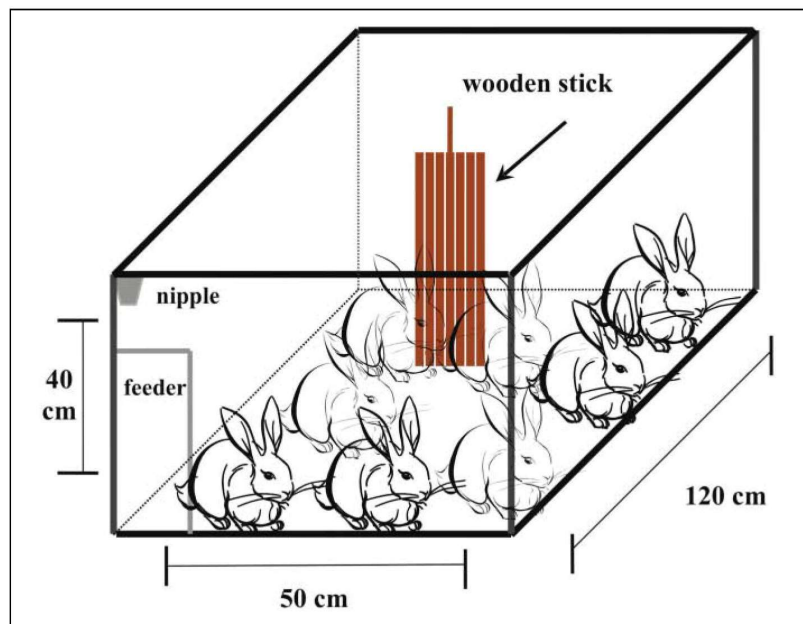
## 1. INTRODUCTION

Fattening rabbits are conventionally housed singly or, more frequently, in two animals per cage, in cages of standard dimensions, according to the local tradition. Presently in Europe no EU Directives exist on cage dimensions for these animals, while in some countries local Codes indicate the housing dimensions for rabbits (DEFRA, 1987; WRSA (German Branch, 1991). Moreover, guidelines have been stated also in Switzerland (Swiss Order on Animal Protection, 1991; Bigler and Oester, 1996). At the European level, however, rabbits' husbandry has recently deserved attention too; in fact, a working group (COST Action 848 UE, 1999) has been constituted on rabbits' welfare. In farmed rabbits, the conventional housing system in cages may sometimes affect negatively animals' welfare, both for breeding and for fattening rabbits. The main problems, such as changes in locomotion, presence of stereotypes, space-time disorders, disturbed sexual and maternal behaviours, low conception rate and parental care (Stauffacher, 1992), are mainly related to the type of housing, in particular the quantity and quality of the available space, the handling and management by the stockman, the type of reproduction and the reproduction rhythms for the doe, the environment given to the does and the kits, the type of feeding regimen. Moreover, rabbits are social animals living in colony (Gibb, 1993) and to maintain this condition also in intensive rabbits' rearing could improve their possibility to have adequate social contacts. No abnormal behaviours have been shown in group-housed females (Gunn and Morton, 1996), while group housed males may become more aggressive when reaching sexual maturity (Harkness and Wagner, 1989). In fact, in fattening rabbits, some researchers (Crimella et al.,

environmental enrichment might affect their behaviour and increase their welfare.

**Key words:** rabbit, environmental enrichment, behaviour, production

1987; Bigler and Oester, 1996; Rommers and Meijerhof, 1998) observed fights among the rabbits after 70 days of age. Besides the cage dimensions, also the lack of stimuli may cause welfare problems for rabbits, as well as for other species (Hughes and Duncan, 1988). In fact, boredom may induce physiological and behavioural stress reactions, sometimes leading to health problems too (Lawrence and Rushen, 1993; Fraser and Broom, 1994; Moberg and Mench, 2000). Stereotypes (Mason, 1991), due to limitations in the ethogram, such as barbiting, excessive grooming, wire gnawing, pawing against the cage wall and playing with the water nipple, have been shown in rabbits (Hansen and Berthelsen, 2000; Verga, 2000). In order to reduce stress problems due to the lack of stimuli, it is worthwhile to study appropriate environmental design, considering both the available space and number of animals (Morisse and Maurice, 1997), and the enrichment, which may be introduced into the rearing environment (Brooks et al., 1993; Huls et al., 1991). According to Newberry (1995) and Newberry and Estevez (1997), environmental enrichment may be defined as 'an improvement in the biological functioning of captive animals resulting from modifications to their environment'. In fattening rabbits, this improvement may be shown measuring their behaviour, health status and production too, i.e. growth rate and feed conversion ratio, which may be a consequence of an improved welfare for these farmed animals and which may constitute an important result for the farmers too, thus inducing them to improve the rearing environment for these animals. Moreover, providing environmental enrichment to farmed rabbits may 'improve the public image of animal production' and 'increase economic returns by boosting growth rate or feed conversion efficiency (Gvoryahu et al., 1989). Housing



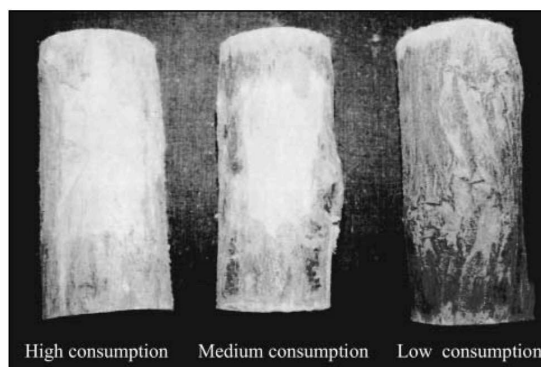
**Figure 1.**  
Graphic representation of colony cage for fatteners (8 rabbits per cage; density=750 cm<sup>2</sup> per animal)

enrichment for rabbits may be obtained both by modifying the rearing system and/or introducing some alternative stimuli into the environment. The effects of the provision of objects has been studied too in individually housed rabbits: hay, compared to grass-cubes, gnawing sticks, a box or nothing, seems to be more effective in lowering abnormal behaviour, although rabbits given grass-cubes show higher growth rates (Lidfords, 1997). The aim of this study was to investigate the effect of the provision of environmental enrichment, i.e. a wooden stick hanging down from the cage ceiling, on behaviour and production of fattening rabbits colony caged.

## 2. MATERIALS AND METHODS

### 2.1 Animals and Experimental Treatments

The trial was carried out in an intensive rabbit farm in the North West of Italy, during a 3-month period (June-August). 96 animals (commercial hybrids) were randomly distributed in colony metal cages (12 cages, 8 animals per cage – cage size: 50x120x40 cm - density: 0.750 cm<sup>2</sup> per animal – figure 1) in *semi plain-air* conditions at 55 days of age. In 6 cages a wooden stick (*Robinia pseudoacacia*) (figure 2) hanging down from the cage ceiling was placed (treatment group, n=48); in the other 6 cages (control group, n=48) there was nothing else than the equipment for providing water and food. The animals were fed by a commercial compound feed (crude protein 16%, crude fibre 17.5%,



**Figure 2.** Wooden stick: *Robinia Pseudoacacia* (length: 20 cm – diameter: 10 cm)

crude fat 3.2%), offered *ad libitum*, and had free access to water (nipple drinkers). Regarding the price of the wooden sticks, it is not easy to have a definite value. In our experimental conditions, the type of wood used (*Robinia pseudoacacia*) is very frequent and cheap in the region of North of Italy, where the trial was assessed.

### 2.2 Behavioural observations

Animals' behaviour was video-recorded during 72 hours (24 hours for 3 days) starting at 55 days of age, at 70 days of age and before slaughtering, at 83 days of age. The video recording covered 48 rabbits for each treatment (environmental enrichment and control

group). Behaviour was analysed using a scan sampling method (Martin and Bateson, 1993) every 10 seconds during the whole observation time.

The following behavioural parameters were recorded, according to Gunn and Morton (1995):

- *active movement*: quickly running around in the cage;
- *aggressive behaviours*: biting with or without injuries;
- *eating*: eating rabbit pellets from the hopper;
- *drinking*: ingesting water;
- *caecotrophy*: ingesting faeces directly from anus;
- *freezing*: the forelegs are forward, the hind legs staying in place and the heels are visible behind the body;
- *gnawing*: gnawing the bars of the cage;
- *self-grooming*: licking, scratching or nibbling of the body;
- *lying*: resting with trunk on ground, hind limbs tucked under the body, the forelimbs lying under the body or stretched forward from the body.
- *lying stretched*: resting with body trunk on ground, hind limbs outstretched and belly exposed;
- *smelling*: smelling at another rabbit and/or at the wooden stick.

### 2.3 Animal performance and body injuries

During the experimental period, the following productive parameters were checked: weight at 55 and at 70 days of age, weight at slaughtering (85 days of age), daily weight gain, mortality rate during the fattening period, body injuries at the end of the fattening period, carcass weight and carcass yield.

To detect the body injuries, due to fights among the animals, we utilised the classification of Bigler and Oester (1996) as follows:

- minor injuries: small and superficial injuries (superficial abrasions and so on);
- medium injuries (problematic): more relevant injuries; they take longer to heal also if the animals show no obvious reactions of pain;
- serious injuries (very problematic): large and inflamed or purulent injuries that heal badly; the animals often show reactions of pain.

### 2.4 Statistical analysis

The productive data were submitted to Analysis of Variance (General Linear Model by SAS, 1999) using the treatment (wooden stick) as main effect for the productive parameters and the initial body weight as a covariate.

The behavioural parameters were analysed using the Analysis of Variance (Npar1way Procedure – Wilcoxon scores) (SAS, 1999).

## 3. RESULTS

### 3.1 Behavioural observations

In the first period (55 days of age), the enriched rabbits were more active than the control ones; in detail, the behaviours lying and lying stretched were significantly lower ( $P < 0.001$  and  $P < 0.05$ , respectively). This difference could be linked to the new environment in the cage (presence of a wooden stick). Furthermore, the enriched rabbits showed a trend to higher feeding and caecotrophy activities, maybe linked to a total higher activity. Also, in the second (70 days of age) and the third period (83 days of age), the enriched rabbits showed higher feeding behaviour and caecotrophy levels ( $P < 0.05$ ; figure 3). Rabbits reared in cages with the presence of the environmental enrichment showed a high percentage of wood gnawing (80%) during the whole experimental period; in the last period, environmental enriched rabbits showed a significant reduction of the bar gnawing compared to the control ones.

### 3.2 Animal performance and body injuries

The total daily weight gain ( $49.6 \pm 2.7$ g vs  $46.18 \pm 5.6$ g) and weight at slaughtering ( $2973.18 \pm 34.09$ g vs.  $2834.68 \pm 34.45$ g,  $P \leq 0.01$ ) were heavier in enriched caged rabbits than in control groups. The carcass yield was not different between the groups (62.2%). No injuries were detected on the carcass surface during the slaughter processing on both the experimental and control groups. No mortality was observed apart from only one rabbit in the control group.

## 4. DISCUSSION

### 4.1 Behavioural observations

In the first period, rabbits with environmental enrichment were more active, thus indicating that the effect of wooden stick could be positive already at this stage. In fact, the rabbit activities were directed towards nutrition; also the caecotrophy and exploration activities were increased in rabbits housed in cages with environmental enrichment, although not significantly. In the second period, we found some behavioural differences, too. Rabbits without wooden stick rested more; it could be explained by reduced activity due to boredom. In the third period, the effect of the environmental enrichment probably reduced the stress effects due to the environmental hypo-stimulation. Rabbits without wooden sticks showed more gnawing bars, which could be a chronic stress indicator (Stauffacher, 1992), as well as they seemed to find alternative activities, such as smelling. This behaviour could be an exploration activity and/or a beginning of aggressiveness towards the other animals (Bigler and Oester, 1996). Furthermore, as regards the

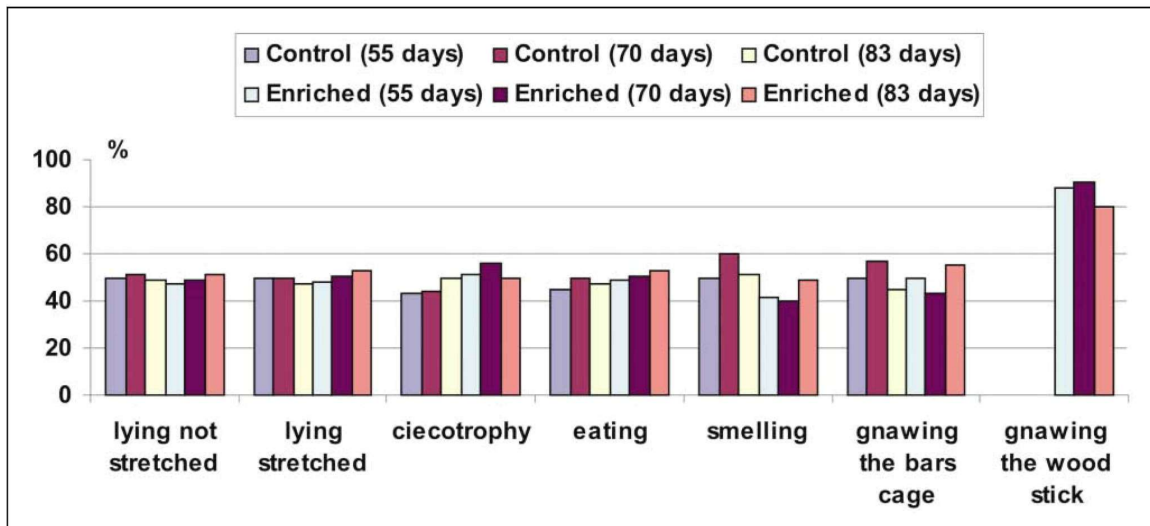


Figure 3. Behavioural parameters (frequency) at 55, 70 and 83 days of age divided per treatment and control group.

duration of the effect, Maertens and Van Oeckel (2001), similar as Huks et al. (1991) and Brooks et al. (1993), found out that rabbits showed interest in wooden sticks over a long period, although the intake was low, similar as found also by Jordan and Stuhec (2002).

#### 4.2 Animal performance and body injuries

Daily weight gain ( $49.6 \pm 2.7$ g vs  $46.18 \pm 5.6$ g) and weight at slaughtering ( $2973.18 \pm 34.09$ g vs  $2834.68 \pm 34.45$ g,  $P \leq 0.01$ ) were heavier in enriched cages than in control groups. On the contrary, the carcass yield was not different between the groups (62.2%). Jordan and Stuhec (2002) reported that providing wood for gnawing as an enrichment method did not significantly influence live weight gain and carcass weight. No injuries were detected on the carcass surface during the slaughter processing on both the environmental and control groups. Bigler and Oester (1996) reported that the frequency of aggressive behaviour increased with larger group size: in groups with 10-15 animals aggressive encounters occurred less than in groups with 16-30 and 40 animals. Mirabito et al. (1999a) found that the group size (2 or 6 animals per cage) did not affect the performance. The same authors (Mirabito et al., 1999b) reported better results in cages with 6 rabbits; thus, sometimes the results were fluctuating. In other trials the group size and the stocking density affected the rabbits' performance and the mortality rate (Eiben et al., 2001).

Morisse and Maurice (1997) found that, in fattening rabbits slaughtered before sexual maturity, dominance and sexual behaviour leading to aggressive encounters

are uncommon and allow the rearing of mixed sexes without major problems. In young animals, behavioural patterns are only slightly affected by stocking densities. Moreover, at 10 weeks of age, social interactions and locomotory activities are reduced beyond 15 rabbits per square metre (i.e.  $38 \text{ kg/m}^2$ ). Taking into consideration the behavioural pattern of rabbits kept in intensive conditions, it is suggested that the animal welfare could be improved if stocking density does not exceed  $40 \text{ kg/m}^2$  (Morisse and Maurice, 1997). The housing system tested in this study, which consisted of colony cages with 8 animals per cage corresponding to a density of  $13 \text{ animals/m}^2$  and  $38.6 \text{ kg/m}^2$ , may avoid aggressive interactions among the rabbits.

#### 5. CONCLUSIONS

In the present study the environmental enrichment reduced the stress effects due to the lack of stimuli; the control animals showed higher stereotypes, i.e. bar gnawing. Thus, the object given to the animals may represent, for rabbits, an adequate kind of environmental enrichment, fulfilling some specific needs of these animals.

Considering the wooden sticks enrichment, Jordan et al. (2004) tested the performance of rabbits for three different types of wooden stick. They found that the most eaten one was Norway spruce (*Picea abies*) than sticks made of lime (*Tilia cordata*) and oak (*Quercus robur*). In our study *Robinia pseudoacacia* seem to be very adequate.

Some other strategies concerning the environmental

enrichment have been tested in other researches, for example, utilising small wooden sticks hanging from the ceiling of the cage or inserting straw or toys on the wall of the cage (Morise et al., 1999; Maertens and Van Oeckel, 2001). Anyway, these types of environmental enrichment need further evaluation.

The reduction of abnormal behaviours together with

increased other activities, such as caecotrophy and feeding and improved performance, may also indicate an improvement in welfare conditions. It is possible to conclude that environmental enrichment is not important only from the animals' point of view, but also from the farmers' one, improving the public image of intensive rabbit rearing. □

## BIBΛΙΟΓΡΑΦΙΑ - REFERENCES

- Bigler L, Oester H (1996). Group housing for male rabbits. 6th World Rabbit Congress, Toulouse, 2:411-415.
- Brooks DL, Huls W, Leaman C, Thomson J, Parker J, Twomery S (1993). Cage enrichment for female NZW rabbits. *Lab. Anim. Sci.*, 22:30-35.
- COST Action 848 UE (1999). Multifaceted research in rabbits: A model to develop a healthy and safe production in respect with animal welfare. (<http://www.dcam.upv.es/cost848/>).
- Crimella C, Verga M, Luzi F (1987). Differenti sistemi stabulativi nell'allevamento del coniglio da carne. *Rivista di Zoot. e Nutr. Anim.*, 13, n. 3:201. Ed. Edagricole, Bologna.
- DEFRA, (1987). Code of recommendations for the welfare of livestock: rabbits. [www.defra.gov.uk](http://www.defra.gov.uk)
- Eiben Cs., Szendrő Zs., Radnai I., Biróné Németh E., 2001. Effect of weaning age, cage size and stocking density on the performance of fattening rabbits. 13th Hungarian Conference on Rabbit Production, Kaposvár, 75-79.
- Fraser D, Broom DM (1994). Farm animal behaviour and welfare. 3rd ed. Baillere Tindall, London U.K.
- Gibb JA (1993). Sociality, time and space in a sparse population of rabbits (*Oryctolagus cuniculus*). *J. Zool. (London)* 229:581-607
- Gunn D, Morton DB (1995). Inventory of the behaviour of New Zealand White rabbits in laboratory cages. *Appl. Anim. Behav. Sci.*, 45:277-292.
- Gunn D, Morton DB (1996). The behaviour of single-caged and group-housed laboratory rabbits. In J. Bunyan (Ed.) *Proc. Fifth FELASA Symposium: Welfare and Science*, Royal Society of Medicine Press, London, pp. 80-84.
- Gvaryahu G, Cunningham L, Tienhoven A (1989). Filial imprinting, environmental enrichment and music application. Effect on behavior and performance of meat strain chicks. *Poultry Science*, 68:211-217.
- Hansen LT, Berthelsen H, (2000). The effect of environmental enrichment on the behavior of caged rabbits. *Appl. Anim. Behav. Sci.*, 68:163-178.
- Harkness JE, Wagner JE (1989). The biology and medicine of rabbits and rodents. Lea and Febiger, Philadelphia, pp. 9-19.
- Hughes BO, Duncan IJH (1988). The notion of ethological "need", models of motivation and animal welfare. *Anim. Behav.*, 36:1696-1707.
- Huls WL, Brooks DL, Bean Kundsén D (1991). Response of adult NZW rabbits to enrichment objects and paired housing. *Lab Anim. Sci.*, 11:609-612.
- Jordan D, Stuhec I. (2002). The influence of environmental enrichment (gnawing stick) on some performance and carcass traits of male rabbits. *Acta Agraria Kaposvariensis*, 6:2:195-200.
- Jordan D, Varga A, Kermauner A, Gorjanc G, Stuhec I, (2004). The influence of environmental enrichment with different kind of wood on some behavioural and fattening traits of rabbits housed in individual wire cages. In: *Proc. of the 12th International Symposium, Bled (Slovenia)*, 2-4 September 2004. *Acta Agriculturae Slovenica, Suppl.* 1, 81-86.
- Lawrence AB, Rushen J (1993). *Stereotypic animal behaviour: Fundamentals and Applications to Welfare*. Cab International, UK, pp 212.
- Lidfords L (1997). Behavioural effects of environmental enrichment for individually caged rabbits. *Appl. Anim. Behav. Sci.*, 52:157-169.
- Maertens L, Van Oeckel M. J (2001). Effet du logement en cage au en parc et de son enrichissement sur les performances et la couleur de la viande des lapins. 9èmes Journ. Rech. Cun., Paris, 31-34.
- Martin P, Bateson P (1993). *Measuring behaviour: an introductory guide*. 2ed. Cambridge.
- Mason GJ (1991). Stereotypes and suffering. *Behav. Proc.*, 25:103-115.
- Mirabito L, Galliot P, Soulhet C, Pierre V (1999a). Logement des lapins en engraissement en cage 2 ou 6 individus: Etude du budget-temps. *8emes Jour. de la Rech. Cun.*, ITAVI Ed., Paris.
- Mirabito L, Buthon L, Cialdi G, Galliot P, Souchet C, (1999b). Effet du logement des lapines en cages réhaussées avec plate-forme: premiers resultats. *8emes Jour. de la Rech. Cun.*, 67-70., ITAVI Ed., Paris.
- Moberg GP, Mench JA (2000). *The biology of animal stress: Basic Principles and Implications for Animal Welfare*. CABI Publishing, Wallingford, UK. Pages 377.
- Morisse JP, Maurice R (1997). Influence of stocking density or group size on behavior of fattening rabbits kept under intensive conditions. *Appl. Anim. Behav. Sci.*, 54:351-357.
- Newberry RC (1995). Environmental enrichment: increasing the biological relevance of captive environments. *Appl. Anim. Behav. Sci.*, 44:229-243.
- Newberry RC, Estevez I (1997). A dynamic approach to the study of environmental enrichment and animal welfare. *Appl. Anim. Behav. Sci.*, 54:53-57.
- Rommers J, Meijerhof R (1998). Effect of group size on performance, bone strength and skin lesions of meat rabbits housed under commercial condition. *World Rab. Sci.*, 3-4. 299-302.
- SAS/STAT (1999). *User's guide, Version 8*, SAS Inst. File, Cary, NC, USA.
- Stauffacher M, (1992). Group housing and enrichment cages for breeding, fattening and laboratory rabbits. *Anim. Welf.*, 1:105-125.
- Swiss Order on Animal Protection (SOAP), Revision (1991). EDMZ 3001 Bern, Swiss.
- Verga, M (2000). Intensive rabbit breeding and welfare: development of research, trends and applications. 7th World Rabbit Congress, 4-7 July 2000, Valencia, Spain. Vol. B:491-509.
- World Rabbit Science Association, German Section (1991). *Indications for Rabbit Housing*.