

# Identifying inhibitors of epithelial-mesenchymal plasticity using a network topology based approach

Kishore Hari<sup>1</sup>, Burhanuddin Sabuwala<sup>2</sup>, Balaram Vishnu Subramani<sup>3</sup>, Caterina La Porta<sup>4,5</sup>, Stefano Zapperi<sup>4,6</sup>, Francesc Font-Clos<sup>4,6</sup>, Mohit Kumar Jolly<sup>1\*</sup>

<sup>1</sup> Centre for BioSystems Science and Engineering, Indian Institute of Science, Bangalore 560012, India

<sup>2</sup> Department of Biotechnology, Indian Institute of Technology Madras, Chennai 600036, India

<sup>3</sup> School of Mathematics, Indian Institute of Science Education and Research, Thiruvananthapuram 695551, India

<sup>4</sup> Center for Complexity and Biosystems, University of Milan, Milano 20133, Italy

<sup>5</sup> Department of Environmental Science and Policy, University of Milan, Milano 20133, Italy

<sup>6</sup> Department of Physics, University of Milan, Milano 20133, Italy

\* Corresponding author: [mkjolly@iisc.ac.in](mailto:mkjolly@iisc.ac.in)

## Abstract

Metastasis is the cause of over 90% of cancer-related deaths. Cancer cells undergoing metastasis can switch dynamically between different phenotypes, enabling them to adapt to harsh challenges such as overcoming anoikis and evading immune response. This ability, known as phenotypic plasticity, is crucial for the survival of cancer cells during metastasis, as well as acquiring therapy resistance. Various biochemical networks have been identified to contribute to phenotypic plasticity, but how plasticity emerges from the dynamics of these networks remains elusive. Here, we investigated the dynamics of various regulatory networks implicated in Epithelial-Mesenchymal Plasticity (EMP) – an important arm of phenotypic plasticity – through two different mathematical modelling frameworks: a discrete, parameter-independent framework (Boolean) and a continuous, parameter-agnostic modelling framework (RACIPE). Results from either framework in terms of phenotypic distributions obtained from a given EMP network are qualitatively similar and suggest that these networks are multi-stable and can give rise to phenotypic plasticity. Neither method requires specific kinetic parameters, thus our results emphasize that EMP can emerge through these networks over a wide range of parameter sets, elucidating the importance of network topology in enabling phenotypic plasticity. Furthermore, we show that the ability to exhibit phenotypic plasticity positively correlates with the number of positive feedback loops. These results pave a way towards an unorthodox network topology-based approach to identify crucial links in a given EMP network that can reduce phenotypic plasticity and possibly inhibit metastasis - by reducing the number of positive feedback loops.

**Keywords:** *Epithelial-Mesenchymal Plasticity (EMP), bidirectional transition, network topology, RACIPE, Boolean models, parameter independent and parameter agnostic models*

## 1. Introduction

Metastasis, therapy resistance, and tumor relapse remain unsolved clinical challenges and a major cause of cancer mortality [1]. During metastasis, cells navigate many bottlenecks: local invasion, intravasation, survival in circulation in matrix-deprived conditions, extravasation, and eventually colonization of the distant organ. Only a few ( $< 0.02\%$ ) cells survive this cascade of events and are capable of initiating metastasis. Recent studies have identified phenotypic plasticity – the ability of cells to reversibly switch phenotypes in response to their ever-changing environmental conditions – as a hallmark of cancer metastasis [2]. Similarly, phenotypic plasticity enables a small proportion of cancers cells to transiently acquire an adaptive drug-refractory phenotype which may contribute to tumor relapse [3]. Therefore, identifying the mechanisms of phenotypic plasticity is essential for any major breakthroughs in cancer treatment.

Phenotypic plasticity is considered to be an adaptation strategy to survive in variable environmental conditions [4]. Recently, the contributions of phenotypic plasticity in driving metastasis and therapy resistance have been realized more prominently, especially due to the lack of any unique mutational signature being identified for cancer metastasis so far [2], and the frequent emergence of resistance against targeted therapy [3]. Phenotypic plasticity, referred to as “the architect who never sleeps” [5], can have various dimensions – metabolic plasticity [6], epithelial-mesenchymal plasticity [7], plasticity between cancer stem cell (CSC) and a non-CSC state [8, 9, 10], and plasticity between drug-sensitive and drug-resistant/tolerant state [11] among others. Cancer cells continually exploit phenotypic plasticity to adapt to their ever-changing environment by maximizing their fitness during cancer progression, metastasis, therapy resistance and eventually tumor relapse [12]. Moreover, phenotypic plasticity can amplify the non-genetic heterogeneity within tumors, thus increasing the number of ‘exit options’ for cells in response to drugs, thereby increasing the versatility of the tumor cell population [13]. Thus, targeting phenotypic plasticity provides a unique opportunity to both curb cancer metastasis and to improve the efficiency of existing therapeutic strategies.

A canonical example of phenotypic plasticity is Epithelial-Mesenchymal plasticity (EMP), which involves partial and/or complete Epithelial-Mesenchymal Transition (EMT) and/or Mesenchymal-Epithelial Transition (MET). EMT and MET are embryonic developmental programs which are often adopted by cancer cells during metastasis [14]. EMT can fuel the dissemination of stationary cancer cells through reduced cell-cell adhesion and apico-basal polarity and increased migration and invasion. Conversely, MET may enable the disseminated cells that exit the bloodstream to survive in a different environment by regaining cell-cell adhesion and proliferation to eventually colonize that

organ. EMT and MET were earlier thought of as binary processes (i.e. switching between epithelial and mesenchymal phenotypes), but recent *in vitro*, *in vivo* and *in silico* evidence strongly suggests that they are not ‘all-or-none’ processes, and cells can stably reside in one or more hybrid E/M phenotypes, thus enabling various manifestations of EMP [14]. EMP can not only drive metastasis, but also influence the resistance to various chemotherapeutic drugs and targeted therapies. It can also alter the tumor microenvironment to be immunosuppressive, eventually leading to overall poor survival of patients across cancer types [15, 16]. Therefore, preventing the ability of cells to reversibly switch among these epithelial (E), mesenchymal (M), and hybrid E/M (H) phenotypes can have a significant clinical impact.

Most current preclinical and clinical efforts attempt to restrict EMP in only one direction – EMT or MET. Such efforts are likely to facilitate the transition in the opposite direction (i.e. MET or EMT respectively) and can possibly increase the frequency of hybrid E/M phenotypes which can be the ‘fittest’ for metastasis [17]. Hence, these interventions may increase the metastatic load instead, depending on the phenotypic distribution of disseminated cells. Blocking EMP in both directions can overcome these potential side effects. Moreover, restricting EMP bidirectionally can also limit the ability of a clonal population to generate and/or maintain non-genetic heterogeneity [18]. Non-genetic heterogeneity can enable ‘bet-hedging’ during the evolution of drug resistance [19], as well as the co-existence of phenotypically distinct subpopulations of epithelial and mesenchymal cells that can communicate and cooperate among themselves to aggravate metastasis [20, 21]. Thus, blocking EMP bidirectionally, or in other words “fixing cells at a given position on the epithelial–mesenchymal axis to prevent access to the range of states that might be required to facilitate different stages of the metastatic cascade” [22], is likely to blunt the metastatic and drug-resistance potential of cancer cells much stronger than restricting only EMT or only MET.

Identifying ways to inhibit EMP requires a detailed mechanistic understanding of its dynamics. Experimentally, EMP can be tracked through recent advances such as live-cell imaging reporter constructs or single-cell RNA-seq and/or mass/flow cytometry [13]. Another approach to characterize the dynamics of EMP is by developing mechanism-based mathematical models of networks that have experimentally been identified to regulate EMT and/or MET. Many such mathematical models have helped gain useful insights into the dynamics of EMP and have driven the experiments to decode a) how cells attain one or more hybrid E/M phenotype, b) how reversible is EMP in both directions (E to M vs. M to E) and c) whether cells take same or different paths en route EMT or MET [23]. However, none of these models investigated the possibility of identifying mechanisms to block EMP

65 bidirectionally.

66 Here, we investigate the dynamics of various regulatory networks implicated in EMP and identify  
67 robust network topology based design principles of EMP, using two different but complementary  
68 modeling formalisms – a discrete, parameter-independent method: asynchronous Boolean [24] and a  
69 continuous, parameter-agnostic method: RACIPE (Random Circuit Perturbation) [25]. Our results  
70 show that the phenotypic distributions that can be obtained through an EMP network depend  
71 majorly on network topology but are largely independent of specific kinetic parameters for each link  
72 in the network. We also pinpoint a set of network perturbations that can reduce EMP, and observe a  
73 unifying theme amongst them: a reduced number of total positive feedback loops embedded within  
74 an EMP network led to curtailed EMP. Therefore, our approach unravels the common operating  
75 principles of various EMP regulatory networks and offers a systematic framework to identify network  
76 perturbations to restrict EMP based on this network topology-based dynamical trait.

## 77 **2. Results**

### 78 *2.1. RACIPE and Boolean models have similar phenotypic distributions for EMP networks*

79 Boolean frameworks lack kinetic parameters and treat a gene to be discretely ON (1) or OFF  
80 (0), thus focusing on a coarse-grained view of how various interactions in a network can give rise  
81 to the repertoire of dynamical behaviours [26]. RACIPE, on the other hand, generates an ensemble  
82 of continuous mathematical models (sets of coupled ordinary differential equations) with randomly  
83 chosen kinetic parameters for a given network topology and clusters the steady state solutions to  
84 identify the robust dynamical features of a given network. In other words, while a Boolean framework  
85 is parameter-independent, RACIPE can be thought of as a parameter-agnostic one.

86 Therefore, the similarity in dynamical traits of a network simulated via Boolean and RACIPE  
87 frameworks can unravel the extent to which the network topology drives the network dynamics,  
88 without much reliance on the specific choice of kinetic parameters. Across various EMP networks  
89 and the perturbations made in those, we have compared the outputs of these two modeling frameworks  
90 in terms of phenotypic distributions, and in ranking the effect of various perturbations in diminishing  
91 EMP (**Fig 1A**).

92 We have investigated 6 different networks reported in EMP literature; these networks vary from 3  
93 nodes to 8 nodes and 7 edges to 16 edges (**Fig 1B**). First, we calculated the phenotypic distributions  
94 (i.e. stable steady state frequency distributions) obtained via RACIPE and Boolean models. To  
95 facilitate the comparison of Boolean and RACIPE models, we have discretized the output of RACIPE

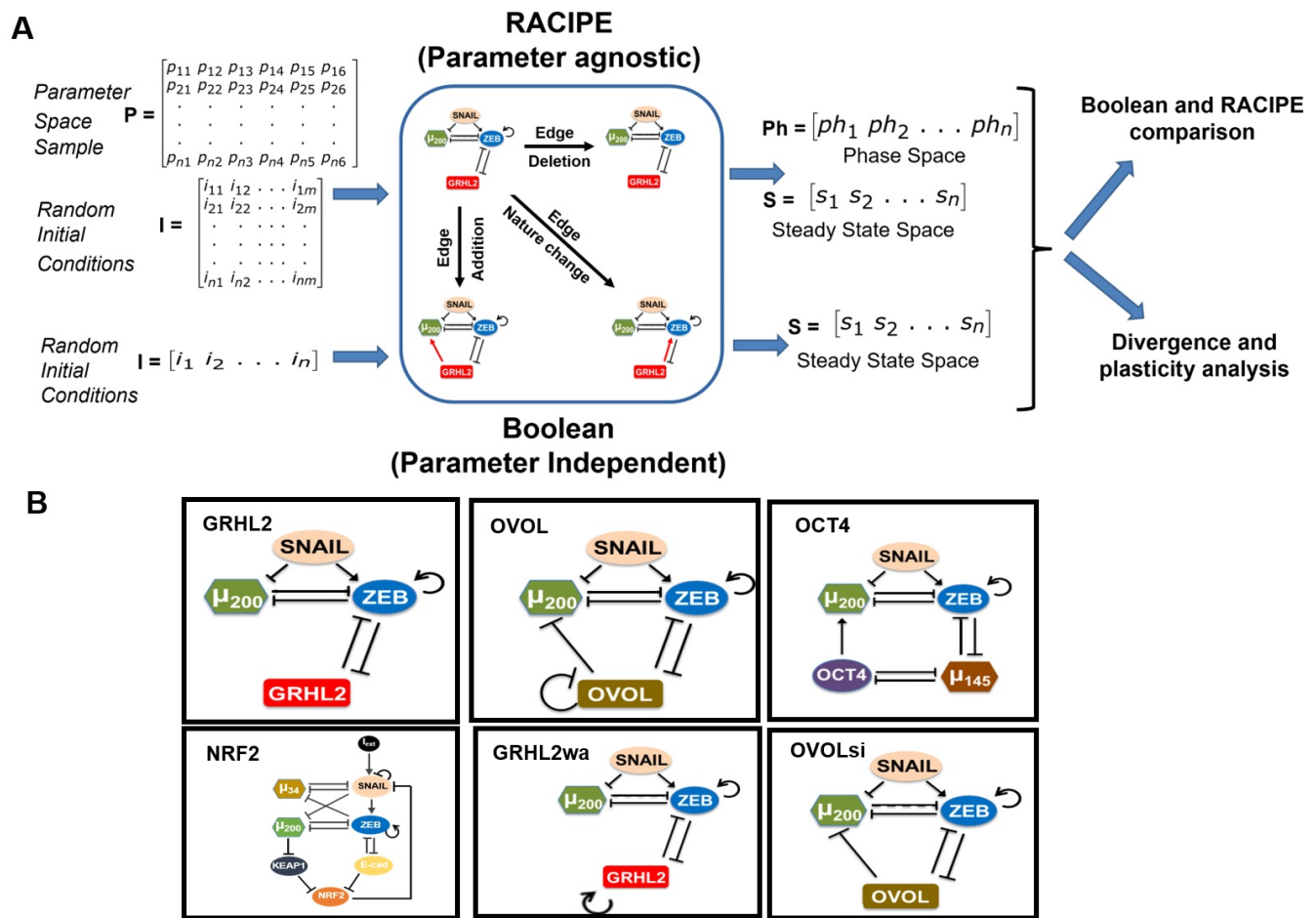


Figure 1: Dynamical approaches to investigate EMP. A. Schematic of network analysis strategy. For a given EMP network, both the ‘wild type’ and perturbed networks are simulated via both RACIPE and Boolean. The steady state and phase frequency distributions thus obtained are further analysed to elucidate similarities between RACIPE and Boolean as well as identifying the factors underlying phenotypic plasticity. B. EMP networks analysed in the study.

96 (as described in ‘Methods’ section). First, we determined the sample size of parameter sets to be  
 97 chosen for RACIPE, and the number of initial conditions for Boolean models, using a quantitative  
 98 convergence analysis.  $N=10,000$  was chosen as the optimal number of parameter sets for RACIPE,  
 99 and as the optimal number of initial conditions for Boolean analysis, based on observed standard  
 100 deviation in steady state distributions obtained from RACIPE and Boolean models (**Fig 2A, S1A**).

101 For the miR-200/ZEB/ SNAIL/GRHL2 network (hereafter called as ‘GRHL2 network’; 4 nodes,  
 102 7 edges), a maximum of  $2^3 = 8$  stable steady states are possible (value of each node = 0 or 1;  
 103 SNAIL is an input to the circuit), in discretized RACIPE and Boolean framework. From Boolean  
 104 analysis, we obtained four stable states for this network across different numbers of initial conditions  
 105 chosen. Two out of these four states were more prominent – (ZEB=0, miR-200=1, GRHL2=1) and  
 106 (ZEB=1, miR-200=0, GRHL2=0) – than the others (**Fig 2A, i**). These two states can be construed

107 as epithelial (high miR-200 and GRHL2, low ZEB) and mesenchymal (low miR-200 and GRHL2,  
 108 high ZEB) phenotypes as observed experimentally [27]; [28]. Discretized analysis of RACIPE results  
 109 also identifies the four stable steady states and with similar relative frequency as seen in the case of  
 110 Boolean model and 3 other states with relatively less frequencies (**Fig 2A, ii**). Put together, these  
 111 results suggest that epithelial and mesenchymal phenotypes are the two most commonly expected  
 112 phenotypes from the dynamics of GRHL2 network.

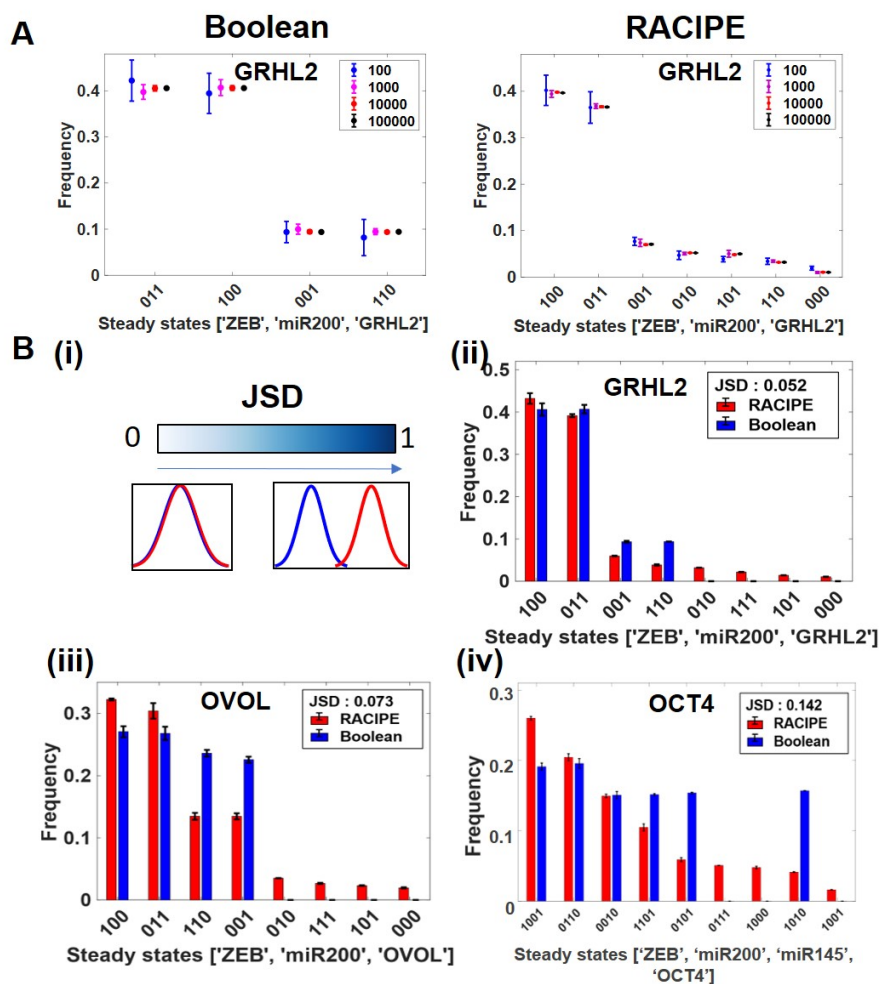


Figure 2: Comparing the outcomes of the discrete (Boolean) and the continuous (RACIPE) modelling frameworks A. Quantitative convergence (QC) of the state frequency landscape for different number of initial conditions in Boolean analysis (i) and different number of parameter sets randomly sampled from the parameter space for RACIPE (ii) respectively. Error bars represent the mean  $\pm$  SD of the corresponding frequencies obtained by  $n = 3$  independent simulations. B. i) Demonstration of JSD between two given probability distributions; JSD ranges from 0 to 1. ii)-iv) Comparison of phenotypic frequency distributions for different EMP networks, as obtained from Boolean and RACIPE.

113 GRHL2 and OVOL1/2 are reported to play similar roles in inducing MET and/or inhibiting  
 114 EMT [29, 30, 31]. Thus, epithelial (ZEB=0, miR-200=1, OVOL=1) and mesenchymal (ZEB=1,

115 miR-200=0, OVOL=0) phenotypes are seen consistently as most predominant ones in the RACIPE  
116 and Boolean model results for the SNAIL/miR-200/ZEB/OVOL network as well (**Fig S1A, i**). Since  
117 GRHL2 can self-activate [32] and OVOL can self-inhibit[33], we studied networks with GRHL2 self  
118 activation (referred to as GRHL2wa) and with and without OVOL self-inhibition (OVOL and OVOLsi  
119 respectively) (**Fig 1B**). In both Boolean and RACIPE, we observed that epithelial and mesenchymal  
120 states were the highest frequency phenotypes across these 3 cases(**Fig S1A, iii-iv**).

121 For the SNAIL/miR-200/ZEB/OCT4/miR-145 network (hereafter referred to as ‘OCT4’ network;  
122 5 nodes, 10 edges), a maximum of  $2^4 = 16$  stable steady states are possible (value of each node = 0 or  
123 1; SNAIL is an input to the circuit). Boolean analysis across different numbers of initial conditions  
124 identified six out of the 16 possible states as stable steady states. The most predominant phenotypes  
125 were (ZEB=0, miR-200=1, miR-145=0, OCT4=0) and (ZEB=1, miR-200=0, miR-145=1, OCT4=1)  
126 which can be mapped on to epithelial and mesenchymal states correspondingly. Results obtained via  
127 RACIPE analysis are qualitatively consistent with those from Boolean model; with some additional  
128 but less frequent states identified via RACIPE (**Fig S1A, ii**). Similar consistency is observed when  
129 comparing the phenotypic distributions for SNAIL/miR-200/ZEB/miR-34/NRF2/KEAP1 network  
130 (hereafter called as ‘NRF2 network’; **Fig S1C**)

131 Next, for each of these different EMP networks, we quantified the difference between the pheno-  
132 typic distributions obtained via RACIPE and Boolean models, using an information theory metric  
133 known as the Jensen-Shannon Divergence (JSD). JSD measures the dissimilarity between two given  
134 probability distributions and was calculated such that it varies between 0 and 1 (Lin, 1991); the  
135 larger the JSD, the more dissimilar or further apart are the two frequency distributions (**Fig 2B,**  
136 **i**). JSD for Boolean vs. RACIPE solutions for the EMP networks modelled here varies between 0.05  
137 to 0.27 (**Fig 2B; S1B; S1C**), suggesting a good quantitative agreement between the two methods.  
138 Thus, these results indicate that the phenotypic distributions enabled by these EMP networks is a  
139 feature of the underlying network topology rather than of specific kinetic parameters.

## 140 2.2. Quantifying the effect of edge perturbations on phenotypic distributions of EMP networks via 141 JSD

142 To characterize the effects of network topology on phenotypic distributions further, we made  
143 changes to the topology in the form of single-edge perturbations and quantified the impact of these  
144 edge perturbations on the phenotypic distributions obtained from various EMP networks. An edge  
145 perturbation can be one of the following: a) deleting an edge, b) adding a (hypothetical) edge, and



146 c) changing the sign of an edge (i.e. from activation to inhibition or vice-versa). For a network with  
147  $N$  nodes and  $E$  edges, there can be  $E$  edge deletions,  $({}^N C_2 - E)$  additions, and  $E$  changes in edge  
148 sign. Thus, for the ‘wild-type’ (WT) SNAIL/miR-200/ZEB/GRHL2 network, 31 such perturbations  
149 are possible (**Table S1**), each of which will generate a new network topology. For every pertur-  
150 bation, we simulated the new network using both RACIPE and Boolean models and obtained the  
151 two corresponding phenotypic distributions. For the 32 distributions (31 perturbed + 1 ‘wild-type’)  
152 obtained via Boolean models, we then calculated the JSD between every two phenotypic distributions  
153 to identify perturbations that can drastically alter the phenotypic landscape. The network where the  
154 link from ZEB to GRHL2 was changed from inhibition to activation/excitation (*ZEB-GRHL2\_2-1*)  
155 had the highest JSD from all remaining 31 networks (**Fig 3A**). RACIPE models, in addition to  
156 *ZEB-GRHL2\_2-1* identified another perturbation which stood out relative to others – the deletion of  
157 the inhibitory link from ZEB to miR-200 (*Zeb-miR200\_2-0*) (**Fig 3B**). Similar analysis for the NRF2  
158 network using Boolean analysis identified two key perturbations while RACIPE analysis identified  
159 two additional ones (**Fig S2A**).

160 Further, we compared JSD between perturbed and ‘wild-type’ networks, calculated via RACIPE  
161 and Boolean analysis (**Fig 3C, S2B**). While the absolute values of JSD were different for Boolean  
162 and RACIPE methods, a positive correlation was observed between the JSD values across all six  
163 EMP networks considered here. Moreover, the strongest perturbation obtained via both methods  
164 showed concordance (highlighted by the arrows in **Fig 3C and S2B**). These results further emphasize  
165 the role of network topology in phenotypic distributions generated by EMP networks.

### 166 2.3. JSD does not correlate with phenotypic plasticity in EMP networks

167 Next, we investigated whether the perturbed networks which are farthest from the ‘wild-type’  
168 network (i.e., having the highest JSD) are the ones with reduced phenotypic plasticity as well.  
169 Phenotypic plasticity is the ability of cells to sample multiple phenotypes (stable steady states)  
170 and to switch from one phenotype to another, spontaneously or under external factors. Here, we  
171 define phenotypic plasticity in two different ways based on RACIPE output. For every randomly  
172 chosen parameter set, RACIPE chooses 100 initial conditions and its output includes the possible  
173 one or more stable steady states for a given parameter set, depending on initial conditions. For some  
174 parameter sets, all chosen initial conditions converge to one stable state, while in others, multiple  
175 steady states (multistability) may be allowed. Thus, plasticity score 1 (PS1) is defined as the fraction  
176 of parameter sets that enable multistability (**Fig 4A**). The definition of plasticity score 2 (PS2) is

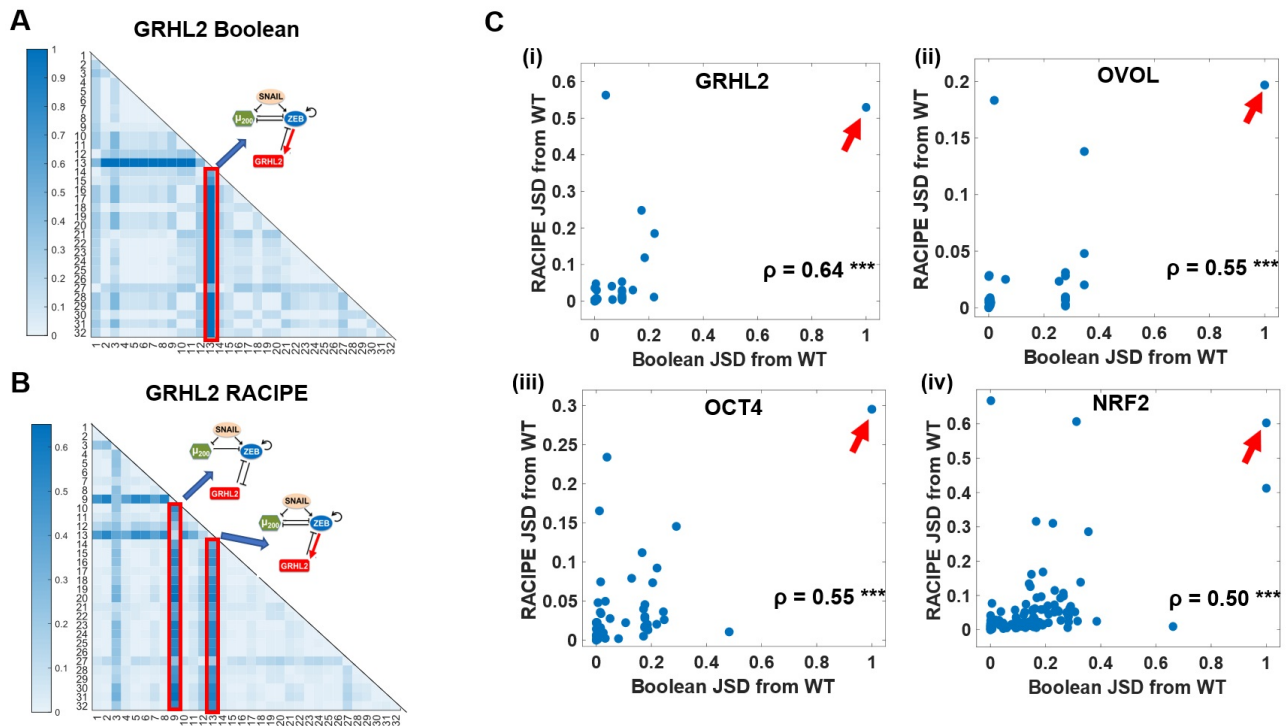


Figure 3: Quantifying the effect of single-edge perturbations on the network behaviour landscapes: A. Heatmap of the distance between steady state distributions of all perturbations for the GRHL2 network from each other, obtained from Boolean. Color bar shows the value of JSD. Each number (1-31) represents a particular perturbed network and number 2 represents 'wild-type' (Table S1). The change of ZEB-GRHL2 link from inhibition to activation (highlighted in red) has high JSD from all other perturbations and WT. B. Same as A, but for results via RACIPE. In addition to the one identified via Boolean analysis, this heatmap highlights another perturbed network where the inhibitory link from ZEB to miR-200 is broken. C. Scatter plots of JSD between the steady state distributions of a perturbed network from WT as obtained via RACIPE vs. as obtained via RACIPE. Each dot in a plot represents a perturbed topology for the EMP network mentioned – GRHL2 in i), OVOL in ii), OCT4 in iii) and NRF2 in iv). The strongest perturbation identified by both Boolean and RACIPE is highlighted by the arrow. Spearman correlation coefficients ( $\rho$ ) are reported; \*\*\*:  $p < 0.001$

177 more biology-centric. We first define the 'phenotype' of a given steady state based on the discretized  
 178 expression levels of canonical epithelial and mesenchymal markers – miR-200 and ZEB respectively.  
 179 This allows identifying various phases (combinations of co-existing steady states), such as the co-  
 180 existence of epithelial and mesenchymal states  $\{E,M\}$  for instance. PS2 is the fraction of parameter  
 181 sets which allow multiple phenotypic states, i.e. multistable phases (Fig 4A). For a given network,  
 182 we calculated PS1 and PS2 scores for the 'wild-type' and perturbed topologies; a comparison of  
 183 these two metrics revealed a strong positive correlation across all 6 networks (Fig 4B, S3A). The  
 184 perturbed networks had both increasing as well as decreasing effect on phenotypic plasticity (Fig  
 185 4B, S3A).

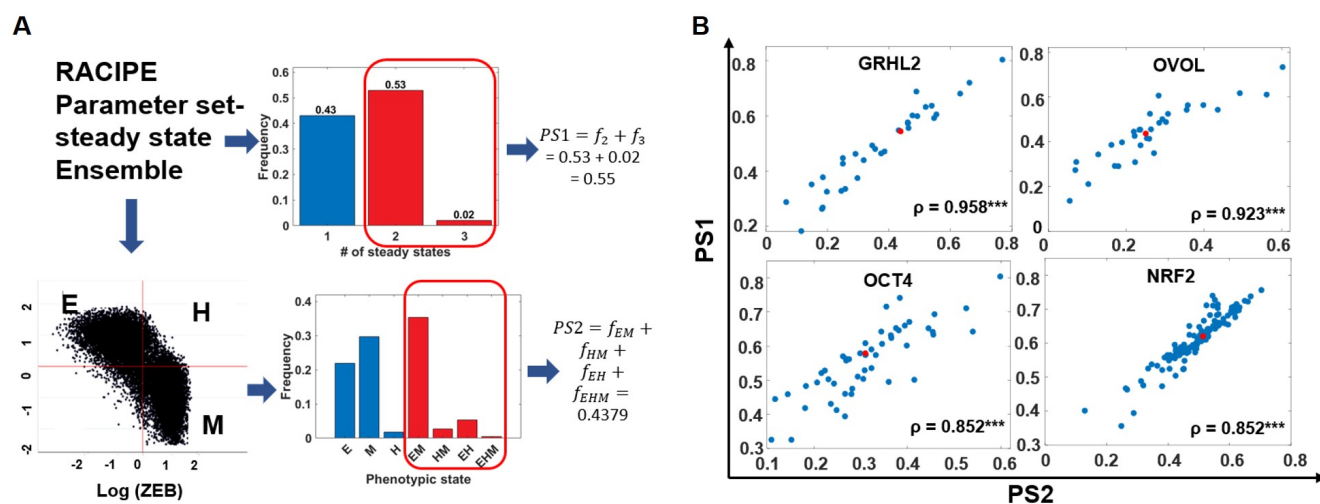


Figure 4: Metrics for quantifying phenotypic plasticity for the case of single-edge perturbations. A. Two definitions of plasticity: PS1 (top) is defined as the fraction of multistable parameter sets identified by RACIPE. PS2 (bottom) is calculated after ZEB and miR200 expression levels are used to classify each steady state into Epithelial (E) – (high miR-200, low ZEB) / Hybrid (H) – (high miR-200, high ZEB) / Mesenchymal (M) – (low miR-200, high ZEB) states. Parameter sets are then characterized as monostable or multistable based on the phenotypic states they sample. PS2 is the fraction of parameter sets giving rise to multiple phenotypes. B. Scatter plot of PS1 vs. PS2 for different EMP networks – WT (colored red) and perturbed (colored blue; single-edge perturbed: edge deletion, edge nature change and edge additions) ones. Spearman correlation coefficients ( $\rho$ ) are denoted; \*\*\*:  $p < 0.0001$

186 Further, we checked whether the topologies with the highest JSD from the ‘wild-type’ network led  
 187 to a decrease or an increase in PS2 scores. We did not observe any significant overlap of the network  
 188 topologies with the highest JSD vs. those with the highest or the lowest PS2 scores. This lack of  
 189 trend was seen across all six networks considered (**Fig 5A**). Further, a scatter plot between JSD  
 190 from the ‘wild-type’ network and fold-change in PS2 scores relative to the ‘wild-type’ was plotted.  
 191 While some networks showed a negative correlation, others had no significant correlation between  
 192 these two metrics (**Fig 5B; S3B**). Similar results were obtained for analysis done using PS1 scores for  
 193 these perturbed networks (**Fig S3C**). Together, these observations suggest that JSD is not a good  
 194 predictor of phenotypic plasticity.

#### 195 2.4. Number of positive feedback loops in EMP networks correlates with phenotypic plasticity

196 Next, we revisited the network topologies with the highest JSD from the ‘wild-type’ network to  
 197 identify any topological signatures and observed that all of them were disrupting an overall positive  
 198 feedback loop in the ‘wild-type’. Here, the ‘overall’ sign of a loop is defined by the product of signs  
 199 of edges (positive for activation, negative for inhibition) that form a cycle/loop; thus, a mutually

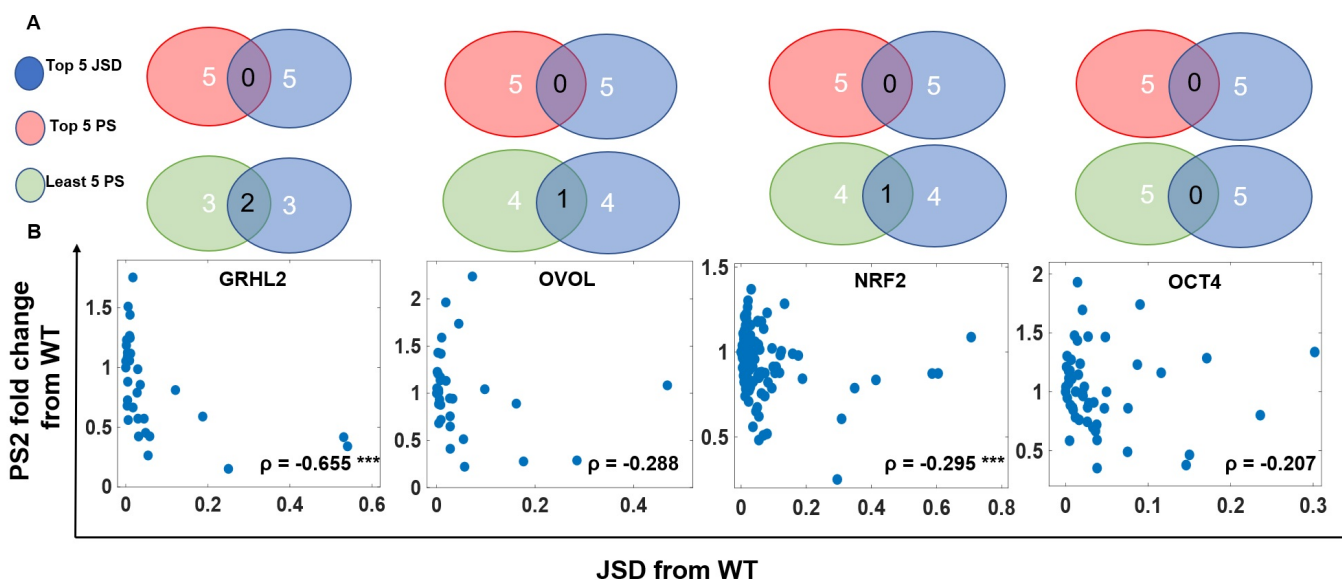


Figure 5: JSD does not correlate with phenotypic plasticity. i) Venn diagrams showing the extent of overlap among the perturbed networks that have the highest JSD from the ‘wild type’ network and those with the highest or lowest fold change in plasticity scores (PS2). EMP networks shown are (from left to right): GRHL2, OVOL, NRF2, OCT4. ii) Scatter plots for respective EMP networks. Each blue dot in a scatter plot is a perturbed network topology corresponding to that EMP network. Spearman correlation coefficient ( $\rho$ ) are denoted; \*\*\*:  $p < 0.001$

200 inhibitory loop between two molecular players is effectively a positive feedback loop. In the GRHL2  
 201 network, the deletion of ZEB to miR-200 inhibitory link (*ZEB-miR200\_2-0*) disrupted the mutually  
 202 inhibitory loop between ZEB and miR-200. Similarly, converting the inhibitory link from ZEB to  
 203 GRHL2 to being excitatory (*ZEB-GRHL2\_2-1*) disrupted the mutually inhibitory feedback loop be-  
 204 tween ZEB and GRHL2 (**Fig 3A**). In the NRF2 network, converting the inhibitory link from ZEB to  
 205 E-cadherin to being excitatory (*ZEB-Ecad\_2-1*) disrupted the mutually inhibitory loop between ZEB  
 206 and E-cadherin, and converting the inhibitory link from miR-200 to NRF2 to excitatory (*miR200-*  
 207 *NRF2\_2-1*) disrupted the overall positive feedback loop formed by miR-200, KEAP1, NRF2 and  
 208 SNAIL (**Fig S2A**).

209 Previous analysis for simpler two-node networks has shown that mutually inhibitory and mutually  
 210 excitatory loops (hence, both being overall positive loops) can lead to multistability which may drive  
 211 phenotypic plasticity [34, 35]. Such networks are typically observed underlying the cell-fate decisions  
 212 during embryonic development [36]. Similar observations have been made for miR-200/ZEB feedback  
 213 loop in driving trans-differentiation through EMP [37, 38]. Therefore, we further inquired whether  
 214 phenotypic plasticity can be correlated with the total number of positive feedback loops in a given  
 215 network. We counted the number of positive feedback loops/cycles for all ‘wild-type’ and perturbed

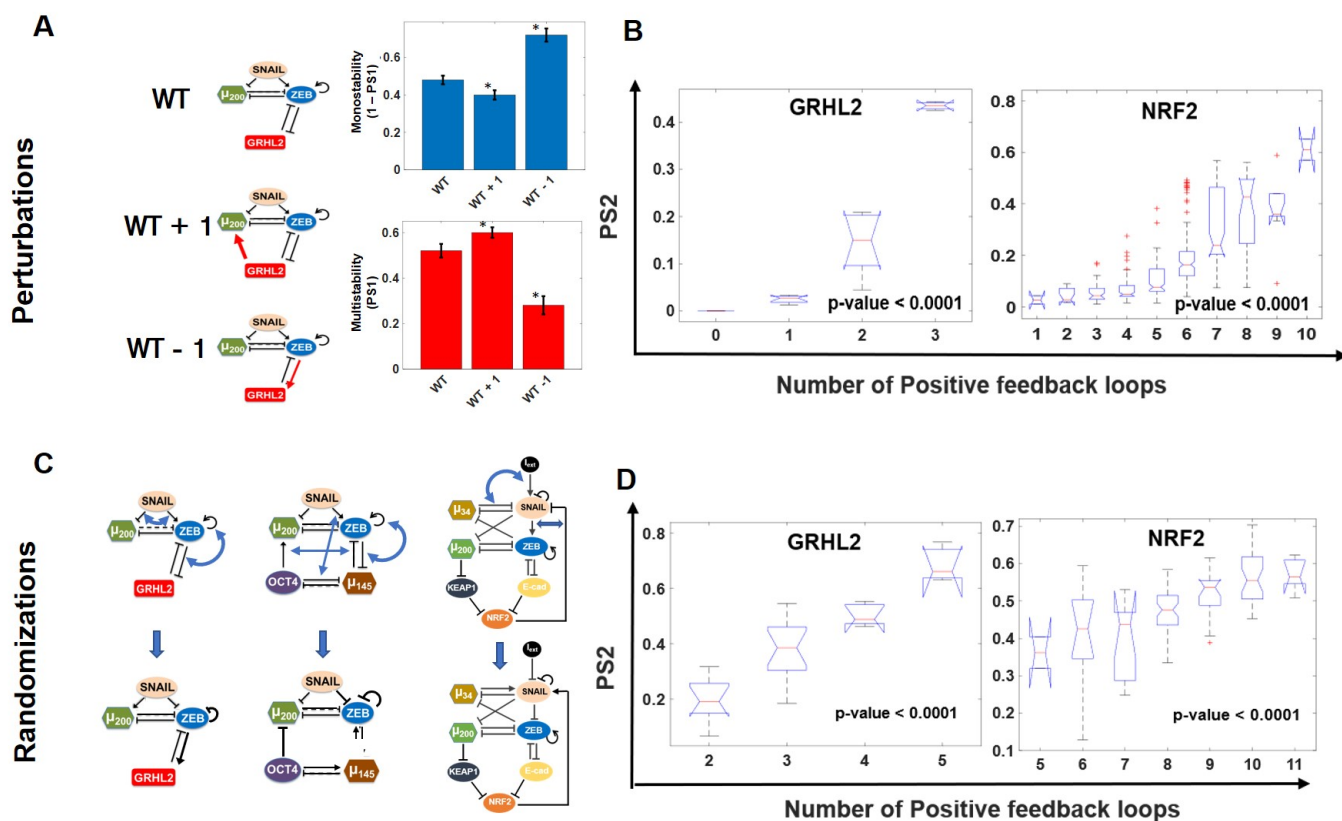


Figure 6: The number of positive feedback loops in EMP networks correlates with phenotypic plasticity A. Demonstration of change in plasticity on altering the total number of positive feedback loops in GRHL2 network. Frequency of multistable parameters (PS2) increases as compared to WT upon the addition of positive feedback loop (GRHL2-miR200-ZEB-GRHL2) to the network (WT + 1) and reduces upon reduction of positive feedback loops by changing the GRHL2-ZEB-GRHL2 cycle to negative feedback (WT - 1). B. Boxplots of PS2 vs. number of positive feedback loops for all the perturbed networks for a given EMP network module. One-way ANOVA test suggests a statistically significant positive correlation between positive feedback loops and plasticity. C. Demonstration of network randomization (the in-degree and out-degree of each node is preserved; however, the number of inhibitory/excitatory nodes arriving at or emerging from a node are not necessarily conserved). D. Same as B, but for randomized network topologies. One-way ANOVA suggests statistically significant positive correlation between positive feedback loops and plasticity. p-value range for the one-way ANOVA test are mentioned on the plots.

216 topologies for all six EMP networks (see Materials and Methods for description). First, taking  
 217 GRHL2 network as a case study, we showed that decreasing the number of positive feedback loops  
 218 by one (WT-1) reduced phenotypic plasticity (**Fig 6A**), while the reverse was true when the number  
 219 of positive feedback loops was increased by one(WT + 1, **Fig 6A**).

220 Next, we compared the number of positive feedback loops in each perturbed network with the  
 221 corresponding plasticity score. Box plots were used for comparison because the number of positive

222 feedback loops is a discrete quantity. Indeed, the mean plasticity score is higher for the groups of  
223 networks with higher number of positive feedback loops; this trend is observed across all six EMP  
224 networks in a statistically significant manner for both plasticity metrics – PS1, PS2 (**Fig 6B; S4A-**  
225 **B**), suggesting a correlation between the number of positive feedback loops in an EMP network, and  
226 its ability to give rise to phenotypic plasticity. We also observed that the total number of feedback  
227 loops (i.e., positive feedback loops + negative feedback loops) in the networks themselves did not  
228 exhibit any significant and consistent effect on plasticity, further emphasizing the role of positive  
229 feedback loops (**Fig S5**).

230 To test whether this observed correlation between plasticity scores and the number of positive  
231 feedback loops is specific to the network topology studied, we generated randomized topologies for  
232 each given network by swapping the edges in a given network (**Fig 6C**). This procedure preserves the  
233 in-degree and out-degree of each node in the network but can change the distribution of excitatory  
234 or inhibitory links arriving at (in-degree) or originating from (out-number) a given node. Thus, for  
235 a given EMP network, such randomization can generate various network topologies with varying  
236 number of net positive feedback loops. For each randomized network topology, we calculated PS1  
237 and PS2. Similar to the perturbations, we observed a positive trend between plasticity and positive  
238 feedback loops (**Fig 6D; S4C-D**), strengthening our hypothesis that the number of positive feedback  
239 loops in a given EMP network is a good predictor of phenotypic plasticity.

240 Next, for all EMP networks, we calculated the JSD of the randomized networks from their ‘wild-  
241 type’ counterparts and plotted the corresponding plasticity scores on a two-dimensional plot of JSD  
242 from the ‘wild-type’ (x-axis) and the number of positive feedback loops (y-axis) for a given randomized  
243 topology (**Fig 7A, i; 7B,i**). As expected, there was heterogeneity in plasticity scores for a fixed  
244 number of positive feedback loops as well as for a fixed range of JSD, suggesting that plasticity  
245 scores might depend on both the number of positive feedback loops and JSD from the ‘wild-type’  
246 network. Further analysis revealed that while the plasticity scores of the randomized topologies  
247 was significantly different for varied number of positive feedback loops (**Fig 6D; S4C-D**), no such  
248 significant difference was observed for varied range of JSD values (**Fig 7A, ii; 7B, ii**). This trend  
249 was seen across all six networks (**Fig S6**).

250 To further confirm our observations, we segregated the randomized topologies into cases with  
251 varied number of positive feedback cycles, and calculated correlation between plasticity scores and  
252 JSD from the ‘wild-type’ network. The correlation coefficient varied from -1 to 1, even within a  
253 given EMP network with many instances being statistically insignificant (**Fig 7C, i**). However,

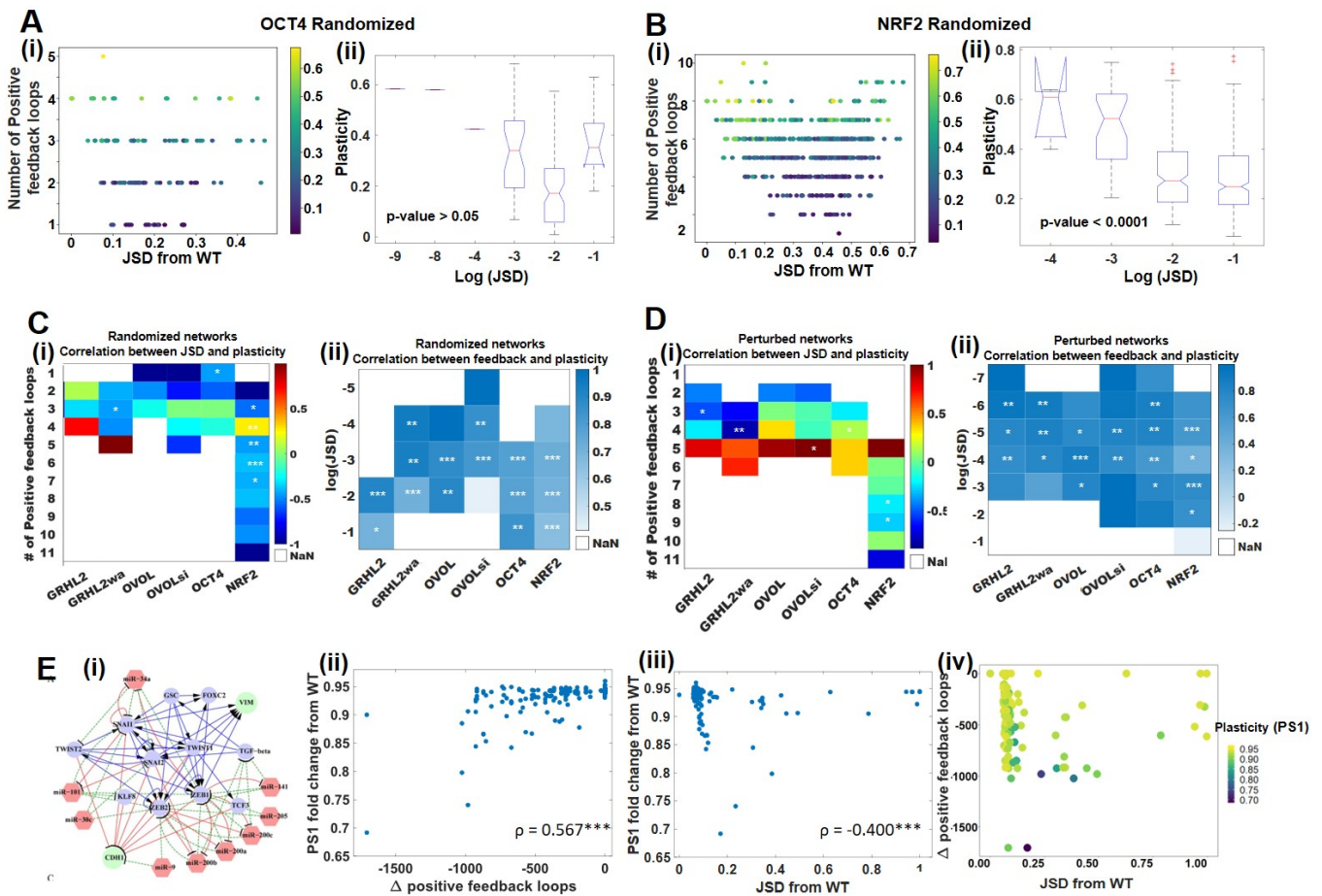


Figure 7: Correlation between JSD, plasticity, and number of positive feedback loops A. i) PS2 for every randomized network for OCT4 network module plotted as a function of its JSD from the WT network and number of positive feedback loops. Colorbar shows PS2 scores. ii) Boxplot for PS2 scores vs. range of JSD values for all networks plotted in i); no significant trend observed. p-value corresponds to one-way ANOVA test. B. Same as A but for NRF2 network C. i) For each EMP module, all randomized networks are sub-categorized based on number of positive feedback loops. Each cell denotes correlation coefficient between JSD from WT and plasticity score fold change, wherever applicable (i.e. number of samples corresponding to that network and feedback loop count > 3). The white boxes (NaN) represent the cases with number of samples less than 3). Spearman correlation coefficient shown using color bar; significance represented as : \* :  $p < 0.05$ , \*\* :  $p < 0.01$ , \*\*\* :  $p < 0.001$  ii) For each EMP module, all randomized networks are classified based on range of JSD values. Each cell denotes correlation coefficient between plasticity score fold change and number of positive feedback loops. D. Same as C but for perturbed network for each EMP module. E. i) Larger EMP network with 22 nodes and 72 edges. ii) Scatter plot between PS1 fold change and a change in positive feedback loops of all perturbed networks (single-edge perturbations) corresponding to the larger EMP network. iii) Scatter plot of PS1 fold change from WT with JSD from WT for these networks. iv) Scatter plot of JSD from WT and change in positive feedback loops for each perturbed network. Color code denotes absolute value of PS1 for a given perturbed network topology.

254 when these randomized networks were segregated based on JSD, plasticity scores and number of  
255 positive feedback loops were positively correlated with statistical significance across all ranges of  
256 the JSD values and across the six EMP networks (**Fig 7C, ii**). Similar results were obtained for  
257 perturbed network topologies (i.e. the cases with perturbations – deletions and edge nature change  
258 and additions) across EMP networks (**Fig 7B; 7D**). Together, these results strongly support that  
259 the number of positive feedback loops, but not JSD, dictates phenotypic plasticity.

260 To examine the scalability of these results, we analysed a larger EMP network (**Fig 7E, i**; 22  
261 nodes, 72 edges) and all single-edge deletions and edge nature change (activation to inhibition and  
262 vice-versa) perturbations (n=144) [25]. Given the network complexity, it becomes harder to associate  
263 mathematically observed stable steady states with biological phenotypes, and hence, we used the  
264 generic definition of phenotypic plasticity(PS1). The correlation between positive feedback loops  
265 and phenotypic plasticity was observed in this larger network as well (**Fig 7E, ii**). Interestingly, in  
266 this larger circuit, single-edge perturbations are capable of disrupting hundreds of positive feedback  
267 loops. The maximum number of positive loops disrupted by a single edge is approximately 1500;  
268 this perturbation can decrease the PS1 scores up to 30% (**Fig 7E; ii**). Given the large number of  
269 overall positive feedback loops in this network (n= 3111), the effect of disrupting a relatively small  
270 number of them does not have a pronounced effect on PS1 scores; however, we were able to identify  
271 single-edge perturbation that can halve the number of positive feedback loops in the network and  
272 correspondingly have a significant effect on phenotypic plasticity enabled by this network.

### 273 **3. Discussion**

274 Our ability to target phenotypic plasticity is limited by the understanding of its dynamics in  
275 tumors and the identification of tumor-specific molecular mechanisms driving it. While various tran-  
276 scriptional and epigenetic networks have been uncovered underlying phenotypic plasticity; how do  
277 these networks give rise to the co-existence of various drug-tolerant states, and the contribution of  
278 these different states to the minimal residual disease remain elusive [39]. Recent surge in our un-  
279 derstanding of the dynamics of EMP has elucidated how the underlying EMP regulatory networks  
280 can give rise to various phenotypes/cell states along the spectrum of EMP, and how these different  
281 subpopulations may co-exist in a tumor and collaborate to drive tumor aggressiveness [40]. Nonethe-  
282 less, targeting EMP in the clinic to observe a major reduction in metastasis still remains a challenge,  
283 because of the precise spatiotemporal regulation of EMP involved during metastasis. Thus, inhibiting  
284 one arm of EMP – say EMT – might actually promote MET and help colonization; and inhibiting



285 MET may facilitate more dissemination [7]. Moreover, inhibiting only EMT or MET may drive the  
286 cells into one or more hybrid E/M phenotypes that are considered to be the ‘fittest’ for metastasis  
287 [13]. Therefore, while targeting EMP is important for restricting metastasis and therapy resistance,  
288 how to achieve that remains an unsolved challenge.

289 Our results present a computational platform to identify specific inhibitors for EMP using a  
290 network-level approach. We have simulated various networks identified to underlie EMP using differ-  
291 ent modeling strategies, to dissect the design principles underlying those networks and suggest how  
292 perturbing those networks may prevent the ability of cells to switch back and forth among the E,  
293 M and hybrid E/M phenotypes. Our analysis predicts that reducing the total number of positive  
294 feedback loops in the EMP network can restrict plasticity. A recent experimental study offers prelim-  
295 inary validation of this prediction, where disrupting the miR-200/ZEB mutually inhibitory (hence,  
296 an overall positive feedback) loop via CRISPR led to significantly reduced metastasis in vivo [37].  
297 This feedback loop has been identified as a key regulator of EMP through extensive experimental  
298 and computational analysis [27, 38, 41]. Mathematical modeling for this loop has predicted how  
299 clonal cells responding to the same EMT-inducing signal can display different phenotypes due to the  
300 emergent multistability (the co-existence of multiple steady states/ phenotypes), a prediction which  
301 was validated experimentally via single-cell analysis of EMP [37]. Various other EMP networks that  
302 have been mathematically studied have included various other direct or indirect positive feedback  
303 loops such as ZEB1/GRHL2 [28], ZEB1/ ESRP1 [42], ZEB1/miR-1199 [43], or miR-34/SNAIL [44].

304 Different modeling frameworks have been used to investigate the dynamics of EMP, depending  
305 on the size of network. While small-sized networks have typically been modelled via continuous  
306 approaches [45, 46, 9, 38, 47, 48], larger networks have been modelled via discrete Boolean approaches  
307 due to lack of available kinetic parameters [24, 43, 49, 50]. While continuous models provide a more  
308 quantitative mapping of system dynamics but require many kinetic parameters that can become  
309 experimentally intractable, Boolean modeling approaches provide a good estimate of qualitative  
310 behavior of a biochemical system without requiring a large set of parameters [51], but are limited in  
311 terms of characterizing dynamic properties such as phenotypic plasticity and state transition rates.  
312 Thus, various efforts have been made to compare the dynamics of Boolean vs. continuous models and  
313 to integrate their strengths, particularly for capturing steady state distributions for smaller biological  
314 networks [52, 53, 54].

315 Here, we compare the phenotypic distributions obtained for various EMP networks using Boolean  
316 approaches and using RACIPE [25] — an algorithm that generates an ensemble of continuous models,

317 each with a randomly chosen parameter set within a biologically feasible range. By simulating  
318 the models for a large number of parameter sets, this method tries to capture the parameteric  
319 variability observed in cell populations from one or multiple individuals. The qualitative and semi-  
320 quantitative agreement seen for Boolean and RACIPE models, across six EMP networks, enable us to  
321 understand the dynamics of EMP driven by network topology instead of specific kinetic parameter sets  
322 in a given cell/population. Furthermore, we could identify perturbations to the network topologies  
323 that affected the phenotypic distributions significantly across parameter sets. Thus, our method to  
324 identify network-topology based predictions to inhibit EMP may provide an avenue to overcome a  
325 major bottleneck in targeted therapy — inter-individual variability in response. Moreover, through  
326 generating a larger number of randomized networks where the in-degree and out-degree of each node  
327 in the network was preserved, we showed that the phenotypic distributions and plasticity scores (PS1,  
328 PS2) obtained are specific to the particular topology of the networks regulating EMP. These results  
329 suggest evolutionary design principles of EMP networks that may have been optimized to induce  
330 EMP as/when needed during development/tissue regeneration, and stably maintain homeostatic  
331 differentiated phenotypes.

332 Intriguingly, the change in phenotypic plasticity, defined by both the plasticity scores does not  
333 correlate with JSD of phenotypic distributions. One possible reason underlying this perceivably  
334 confounding result can be that the JSD only computes the distance between two steady state distri-  
335 butions; it does not capture information about whether the phenotypes can switch among themselves.  
336 (Spontaneous) phenotypic switching is facilitated by multi-stable phases, i.e. the co-existence of more  
337 than one stable steady state, for a given parameter set. Our results that the number of positive feed-  
338 back loops in a given network determines the extent of phenotypic plasticity is reminiscent of reported  
339 connection between positive feedback loops and plasticity in other aspects of cancer too, where mu-  
340 tually inhibitory loops between two ‘master regulators’ drive phenotypic switching [55, 56, 57, 58].  
341 Future efforts should aim at identifying which links(s) in the network to disrupt to cause maximal  
342 change in plasticity, because not every positive feedback loop may be equally likely to lead to mul-  
343 tistability [59, 60]. Moreover, for networks with the same number of feedback loops, the plasticity  
344 scores varied over a range, thus, identifying other predictors of plasticity based on network topology  
345 will be valuable. As an attempt to identify such complementary predictors, we investigated if JSD  
346 coupled with number of feedback loops can lead to isolate networks with highest plasticity, but no  
347 clear improvement in the trend was observed, eliminating JSD as a predictor of plasticity either  
348 individually or in combination with feedback loops.

349 Our results for the 26-node EMP network via RACIPE identifies an edge deletion that can reduce  
350 the positive feedback loops to the half of its original value, and thus has a significant impact on the  
351 plasticity. As more comprehensive networks representing the underlying biology are studied, RACIPE  
352 becomes too computationally expensive, and hence network theory based measures to identify the  
353 feedback loop that, when disrupted, can have maximal effect in curbing plasticity would be valuable  
354 for future therapeutic applications.

355 Most of the targeted therapies in oncology target on disrupting a node in the network. Inevitably,  
356 most cells identify ‘escape’ routes by navigating various dimensions of the phenotypic plasticity  
357 landscape. Our results present an alternative and unorthodox mechanism to restrict the emergence  
358 of metastasis and drug resistance – breaking the feedback loops, i.e. targeting a link instead of a node,  
359 involved in phenotypic plasticity. Disrupting these feedback loops – the cornerstone of phenotypic  
360 plasticity – can restrict the ability of cancer cells to adapt to various therapeutic attacks and limit  
361 tumor aggressiveness.

## 362 4. Methods

### 363 4.1. RANdom CIRcuit PERTurbaiton (RACIPE)

364 RACIPE [25] is a tool that simulates transcriptional regulatory networks (TRNs) in a continuous  
365 manner. Given a TRN, it constructs a system of ODE's representing the network, randomly samples  
366 parameters from pre-defined parameter ranges and simulates the models at each parameter set for  
367 multiple initial conditions, resulting an output of the collection of parameter sets and corresponding  
368 steady states obtained from the model. For the current analysis, we used a sample size of 10000 for  
369 parameter sets and 100 for initial conditions. The parameters were sampled via a uniform distribution  
370 and the ODE integration was carried out using Euler's method.

### 371 4.2. Boolean simulations

372 For discrete analysis of our networks, the Boolean algorithm devised by Font-Clos et al., [24] was  
373 used. The nodes are updated asynchronously according to a majority rule such that nodes state is set  
374 to 1 if the sum of activations to the node is more than the sum of inhibition and set to 0 if inhibition  
375 is more than activation. If inhibition and activations are equal, nodes are not updated. Steady state  
376 is said to have reached if the state of the network doesn't change over time-steps. The input for this  
377 formalism is a set of 10000 initial conditions, which are randomly sampled from all possible states of  
378 the system and corresponding steady states.

### 379 4.3. Discretization of RACIPE output and calculating the state frequency

For a given network with  $i = [1, n]$  nodes, the steady state expression levels of the nodes were normalized in the following way:

$$E_{in} = \frac{E_i}{f_i}$$
$$f_i = \frac{g_i}{k_i} \prod_j \lambda_{ij}$$

Where, for the  $i^{th}$  node,  $E_{in}$  is the normalized expression level,  $E_i$  is the steady state expression level,  $f_i$  is the normalization factor,  $g_i$  and  $k_i$  are production and degradation of the  $i^{th}$  node corresponding to the current steady state and  $\lambda_{ij}$  are the fold change in expression of  $i$  due to node  $j = [1, n]$ . The normalized expression levels of all steady states are then converted into z-scores by scaling about their combined mean:

$$Z_i = \frac{E_{in} - \overline{E_{in}}}{\sigma_{in}}$$

380 where  $\overline{E_{in}}$  is the combined mean and  $\sigma_{in}$  is the combined variance.

381 The z-scores are then classified based on whether they are negative or positive into 0 (low) and 1  
382 (high) expression levels respectively. Each steady state of the network is thus labelled with a string  
383 of 1's and 0's, discretizing the continuous steady state levels. We then calculate the total frequency  
384 of each discrete state by counting the occurrence in all the parameter sets. For parameter sets with  
385  $n$  steady states, the count of each steady state is taken as  $1/n$ , invoking the assumption that all the  
386 states are equally stable.

#### 387 4.4. Quantitative convergence

388 To estimate the optimal sample size of parameter sets for RACIPE and that of initial conditions  
389 for Boolean models, all networks were simulated at different sample sizes in triplicates and the mean  
390 and variance of the steady state frequency distribution was calculated. 10000 was estimated as the  
391 ideal sample sizes for both methods as it was the smallest sample size for which the variance in steady  
392 state frequencies was minimum and the mean of the same was consistently similar to that of higher  
393 sample sizes.

#### 394 4.5. Jensen-Shannon Divergence to measure distance between phenotypic distributions

To quantify the difference between two phenotypic distributions, an information theory metric,  
known as the Jensen-Shannon divergence (JSD) (Lin, 1991) was used, calculated for any two discrete  
frequency distributions  $P(x)$  and  $Q(x)$  as:

$$JSD(P||Q) = \frac{1}{2}D(P||M) + \frac{1}{2}D(Q||M)$$

where  $M = \frac{1}{2}(P + Q)$  and  $D$  denotes the Kullback-Leibler divergence, defined as

$$D(P||Q) = \sum_{x \in \mathcal{X}} P(x) \log\left(\frac{P(x)}{Q(x)}\right)$$

395 The metric, JSD, varies between 0 and 1 when the base 2 logarithm is used for calculation, with 0  
396 indicating identical distributions and 1 indicating no overlap between the two distributions.

#### 397 4.6. Calculating the number of positive feedback loops in a network

398 We estimated the number of cycles in the networks using the *networkx* module in Python 3.7,  
399 where a cycle is defined as a path traversed along the edges of a network that originates and ends at  
400 the same node. We then combine the nature of edges in each cycle to determine whether the given  
401 cycle is positive or negative. For example, in the OCT4 network (Fig 1B), ZEB-miR200-ZEB is a  
402 positive feedback loop, as it goes through inhibition-inhibition. On the other hand, ZEB-miR145-  
403 OCT4-miR200-ZEB is a negative feedback loop, as it goes through inhibition-inhibition-activation-  
404 inhibition.

405 *4.7. Statistical tests*

406 All correlation analysis was done using Spearman correlation method using cor function in MAT-  
407 LAB. The corresponding statistical significance values are represented by ‘\*’s, to be translated as: \*:  
408  $p < 0.05$ , \*\*:  $p < 0.01$ , \*\*\*:  $p < 0.001$ . One-way ANOVA test was performed using anova1 function in  
409 MATLAB.

## 410 References

- 411 [1] Ben-Jacob E, Coffey DS, Levine H (2012) Bacterial survival strategies suggest rethinking cancer  
412 cooperativity. *Trends Microbiol.* 20(9):403–410.
- 413 [2] Celià-Terrassa T, Kang Y (2016) Distinctive properties of metastasis-initiating cells. *Genes Dev.*  
414 30(8):892–908.
- 415 [3] Boumahdi S, de Sauvage FJ (2019) The great escape: tumour cell plasticity in resistance to  
416 targeted therapy. *Nat. Rev. Drug Discov.* doi : 10.1038/s41573-019-0044-1.
- 417 [4] Xue BK, Leibler S (2018) Benefits of phenotypic plasticity for population growth in varying  
418 environments. *Proc. Natl. Acad. Sci. U. S. A.* 115(50):12745–12750.
- 419 [5] Varga J, De Oliveira T, Greten FR (2014) The architect who never sleeps: Tumor-induced  
420 plasticity. *FEBS Lett.* 588(15):2422–2427.
- 421 [6] Lehuède C, Dupuy F, Rabinovitch R, Jones RG, Siegel PM (2016) Metabolic plasticity as a  
422 determinant of tumor growth and metastasis. *Cancer Res.* 76(18):5201–5208.
- 423 [7] Bhatia S, Monkman J, Toh AKL, Nagaraj SH, Thompson EW (2017) Targeting epithelial-  
424 mesenchymal plasticity in cancer: Clinical and preclinical advances in therapy and monitoring.  
425 *Biochem. J.* 474(19):3269–3306.
- 426 [8] Gupta PB, et al. (2011) Stochastic state transitions give rise to phenotypic equilibrium in pop-  
427 ulations of cancer cells. *Cell* 146(4):633–644.
- 428 [9] Jolly MK, et al. (2015) Coupling the modules of EMT and stemness: A tunable 'stemness  
429 window' model. *Oncotarget* 6(28):25161–25174.
- 430 [10] Fumagalli MR, Lionetti MC, Zapperi S, La Porta CAM (2019) Cross-Talk Between circRNAs  
431 and mRNAs Modulates MiRNA-mediated Circuits and Affects Melanoma Plasticity. *Cancer*  
432 *Microenviron.* doi : 10.1007/s12307-019-00230-4.
- 433 [11] Goldman A, et al. (2015) Temporally sequenced anticancer drugs overcome adaptive resistance  
434 by targeting a vulnerable chemotherapy-induced phenotypic transition. *Nat. Commun.* 6:6139.
- 435 [12] Gupta PB, Pastushenko I, Skibinski A, Blanpain C, Kuperwasser C (2019) Phenotypic Plasticity:  
436 Driver of Cancer Initiation, Progression, and Therapy Resistance. *Cell Stem Cell* 24(1):65–78.

- 437 [13] Jolly MK, Celià-Terrassa (2019) Dynamics of Phenotypic Heterogeneity during EMT and Stem-  
438 ness in Cancer Progression. *J. Clin. Med.* 8(10):1542.
- 439 [14] Nieto M Huang RY, Jackson RA, Thiery JP (2016) Emt: 2016. *Cell* 166(1):21–45.
- 440 [15] Dongre A, Weinberg RA (2019) New insights into the mechanisms of epithelial–mesenchymal  
441 transition and implications for cancer. *Nat. Rev. Mol. Cell Biol.* 20(2):69–84.
- 442 [16] Yuan S, Norgard RJ, Stanger BZ (2019) Cellular plasticity in cancer. *Cancer Discov.* 9(7):837–  
443 851.
- 444 [17] Jolly MK, Mani SA, Levine H (2018) Hybrid epithelial/mesenchymal phenotype(s): The ‘fittest’  
445 for metastasis? *Biochimica et Biophysica Acta (BBA) - Reviews on Cancer* 1870(2):151–157.
- 446 [18] Tripathi S, Levine H, Jolly MK (2019) A Mechanism for Epithelial-Mesenchymal Heterogeneity  
447 in a Population of Cancer Cells. *bioRxiv* p. 592691.
- 448 [19] Salgia R, Kulkarni P (2018) The Genetic/Non-genetic Duality of Drug ‘Resistance’ in Cancer.  
449 *Trends in Cancer* 4(2):110–118.
- 450 [20] Neelakantan D, et al. (year?) EMT cells increase breast cancer metastasis via paracrine GLI  
451 activation in neighbouring tumour cells. *Nat. Commun.* 8:15773.
- 452 [21] Tsuji T, et al. (2008) Epithelial-mesenchymal transition induced by growth suppressor p12  
453 CDK2-AP1 promotes tumor cell local invasion but suppresses distant colony growth. *Cancer*  
454 *Res.* 68(24):10377–10386.
- 455 [22] Williams ED, Gao D, Redfern A, Thompson EW (2019) Controversies around epithe-  
456 lial–mesenchymal plasticity in cancer metastasis. *Nat. Rev. Cancer* 19(12):716–732.
- 457 [23] Tripathi S, Xing J, Levine H, Jolly MK (2019) Mathematical Modeling of Plasticity and Het-  
458 erogeneity in EMT. *arXiv Prepr.* arXiv:1907.11174.
- 459 [24] Font-Clos F, Zapperi S, La Porta CA (2018) Topography of epithelial–mesenchymal plasticity.  
460 *Proc. Natl. Acad. Sci. U. S. A.* 115(23):5902–5907.
- 461 [25] Huang B, et al. (2017) Interrogating the topological robustness of gene regulatory circuits by  
462 randomization. *PLoS Comput. Biol.* 13(3):e1005456.



- 463 [26] Gómez Tejeda Zañudo J, et al. (2019) Towards control of cellular decision-making networks in  
464 the epithelial-to-mesenchymal transition. *Phys. Biol.* 16(3):31002.
- 465 [27] Brabletz S, Brabletz T (2010) The ZEB/miR-200 feedback loop—a motor of cellular plasticity in  
466 development and cancer? *EMBO Rep.* 11(9):670–677.
- 467 [28] Mooney SM, et al. (2017) The GRHL2/ZEB Feedback Loop—A Key Axis in the Regulation of  
468 EMT in Breast Cancer. *J. Cell. Biochem.* 118(9):2559–2570.
- 469 [29] Jia D, et al. (2015) OVOL guides the epithelial-hybrid-mesenchymal transition. *Oncotarget*  
470 6(17):15436–15448.
- 471 [30] Jolly MK, et al. (2016) Stability of the hybrid epithelial/mesenchymal phenotype. *Oncotarget*  
472 7(19):27067–27084.
- 473 [31] Roca H, et al. (2013) Transcription Factors OVOL1 and OVOL2 Induce the Mesenchymal to  
474 Epithelial Transition in Human Cancer. *PLoS One* 8(10):e76773.
- 475 [32] Mehrazarin S, et al. (2015) The p63 gene is regulated by grainyhead-like 2 (GRHL2) through  
476 reciprocal feedback and determines the epithelial phenotype in human keratinocytes. *J. Biol.*  
477 *Chem.* 290(32):19999–20008.
- 478 [33] Nair M, Bilanchone V, Ortt K, Sinha S, Dai X (2007) Ovol1 represses its own transcription  
479 by competing with transcription activator c-myc and by recruiting histone deacetylase activity.  
480 *Nucleic Acids Research* 35(5):1687–1697.
- 481 [34] Chickarmane V, Troein C, Nuber UA, Sauro HM, Peterson C (2006) Transcriptional dynamics  
482 of the embryonic stem cell switch. *PLoS Comput. Biol.* 2(9):1080–1092.
- 483 [35] Gardner TS, Cantor CR, Collins JJ (2000) Construction of a genetic toggle switch in *Escherichia*  
484 *coli*. *Nature* 403(6767):339–342.
- 485 [36] Zhou JX, Huang S (2011) Understanding gene circuits at cell-fate branch points for rational cell  
486 reprogramming. *Trends Genet.* 27(2):55–62.
- 487 [37] Celià-Terrassa T, et al. (2018) Hysteresis control of epithelial-mesenchymal transition dynamics  
488 conveys a distinct program with enhanced metastatic ability. *Nat. Commun.* 9(1):5005.

- 489 [38] Lu M, Jolly MK, Levine H, Onuchic JN, Ben-Jacob E (2013) MicroRNA-based regula-  
490 tion of epithelial-hybrid-mesenchymal fate determination. *Proc. Natl. Acad. Sci. U. S. A.*  
491 110(45):18144–18149.
- 492 [39] Rambow F, et al. (2018) Toward Minimal Residual Disease-Directed Therapy in Melanoma. *Cell*  
493 174(4):843–855.e19.
- 494 [40] Jolly MK, et al. (2019) Hybrid epithelial/mesenchymal phenotypes promote metastasis and  
495 therapy resistance across carcinomas. *Pharmacol. Ther.* 194:161–184.
- 496 [41] Tian XJ, Zhang H, Xing J (2013) Coupled reversible and irreversible bistable switches underlying  
497 TGF $\beta$ -induced epithelial to mesenchymal transition. *Biophys. J.* 105(4):1079–1089.
- 498 [42] Jolly MK, et al. (2018) Interconnected feedback loops among ESRP1, HAS2, and CD44 regulate  
499 epithelial-mesenchymal plasticity in cancer. *APL Bioeng.* 2(3):031908.
- 500 [43] Silveira DA, Mombach JCM (2019) Dynamics of the feedback loops required for the phenotypic  
501 stabilization in the epithelial-mesenchymal transition. *FEBS J.* doi : 10.1111/febs.15062.
- 502 [44] Jia D, et al. (2017) Distinguishing mechanisms underlying EMT tristability. *Cancer Conver.*  
503 1(1):2.
- 504 [45] Bocci F, et al. (2019) NRF2 activates a partial Epithelial-Mesenchymal Transition and is maxi-  
505 mally present in a hybrid Epithelial/Mesenchymal phenotype. *Integr. Biol.* 11(6):251–263.
- 506 [46] Hong T, et al. (2015) An Ovol2-Zeb1 Mutual Inhibitory Circuit Governs Bidirectional and  
507 Multi-step Transition between Epithelial and Mesenchymal States. *PLoS Comput. Biol.*  
508 11(11):e1004569.
- 509 [47] Huang B, et al. (2015) Modeling the transitions between collective and solitary migration phe-  
510 notypes in cancer metastasis. *Scientific Reports* 5:17379.
- 511 [48] Kang X, Wang J, Li C (2019) Exposing the underlying relationship of cancer metastasis to  
512 metabolism and epithelial-mesenchymal transitions. *iScience* 21:754–772.
- 513 [49] Steinway SN, et al. (2014) Network modeling of TGF $\beta$  signaling in hepatocellular carcinoma  
514 epithelial-to-mesenchymal transition reveals joint sonic hedgehog and Wnt pathway activation.  
515 *Cancer Res.* 74(21):5963–5977.

- 516 [50] Steinway SN, et al. (2015) Combinatorial interventions inhibit TGF $\beta$ -driven epithelial-to-  
517 mesenchymal transition and support hybrid cellular phenotypes. *npj Syst. Biol. Appl.* 1:15014.
- 518 [51] Wynn ML, Consul N, Merajver SD, Schnell S (2012) Logic-based models in systems biology: A  
519 predictive and parameter-free network analysis method. *Integr. Biol.* 4(11):1332–1337.
- 520 [52] Saadatpour A, Albert R (2016) A comparative study of qualitative and quantitative dynamic  
521 models of biological regulatory networks. *EPJ Nonlinear Biomed. Phys.* 4(1):5.
- 522 [53] Samaga R, Klamt S (2013) Modeling approaches for qualitative and semi-quantitative analysis  
523 of cellular signaling networks. *Cell Commun. Signal.* 11(1):43.
- 524 [54] Wittmann DM, et al. (2009) Transforming Boolean models to continuous models: Methodology  
525 and application to T-cell receptor signaling. *BMC Syst. Biol.* 3(1):98.
- 526 [55] Huang B, et al. (2014) The three-way switch operation of Rac1/RhoA GTPase-based circuit  
527 controlling amoeboid-hybrid-mesenchymal transition. *Sci. Rep.* 4(1):6449.
- 528 [56] Jia D, Park J, Jung K, Levine H, Kaiparettu B (2018) Elucidating the Metabolic Plasticity of  
529 Cancer: Mitochondrial Reprogramming and Hybrid Metabolic States. *Cells* 7(3):21.
- 530 [57] Jolly MK, et al. (2014) Towards elucidating the connection between epithelial-mesenchymal  
531 transitions and stemness. *J. R. Soc. Interface* 11(101):20140962.
- 532 [58] Saha M, et al. (2018) AMPK–Akt double-negative feedback loop in breast cancer cells regulates  
533 their adaptation to matrix deprivation. *Cancer Res.* 78(6):1497–1510.
- 534 [59] Cherry JL, Adler FR (2000) How to make a biological switch. *J. Theor. Biol.* 203(2):117–133.
- 535 [60] Tiwari A, Igoshin OA (2012) Coupling between feedback loops in autoregulatory networks affects  
536 bistability range, open-loop gain and switching times. *Phys. Biol.* 9(5):55003.

## Supplementary Information

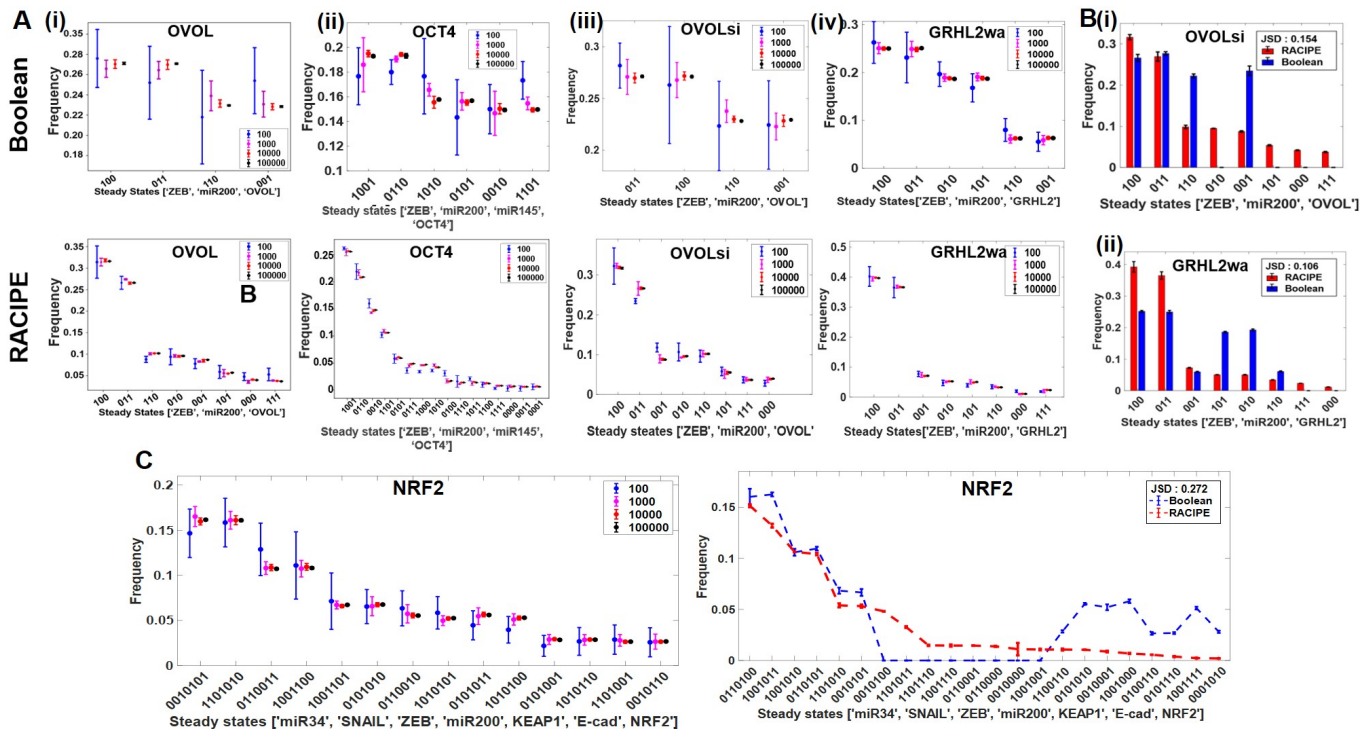


Figure S1: Quantitative convergence (QC) and comparison of phenotypic distributions obtained from RACIPE and Boolean A. QC of (i) OVOL, (ii) OCT4, (iii) OVOLsi and (iv) GRHL2wa using Boolean (top) and RACIPE (bottom). B. Comparison of steady state frequencies obtained from RACIPE and Boolean for GRHL2wa and OVOLsi C. NRF2 QC plot (Boolean) and comparison of RACIPE and Boolean state frequency distributions

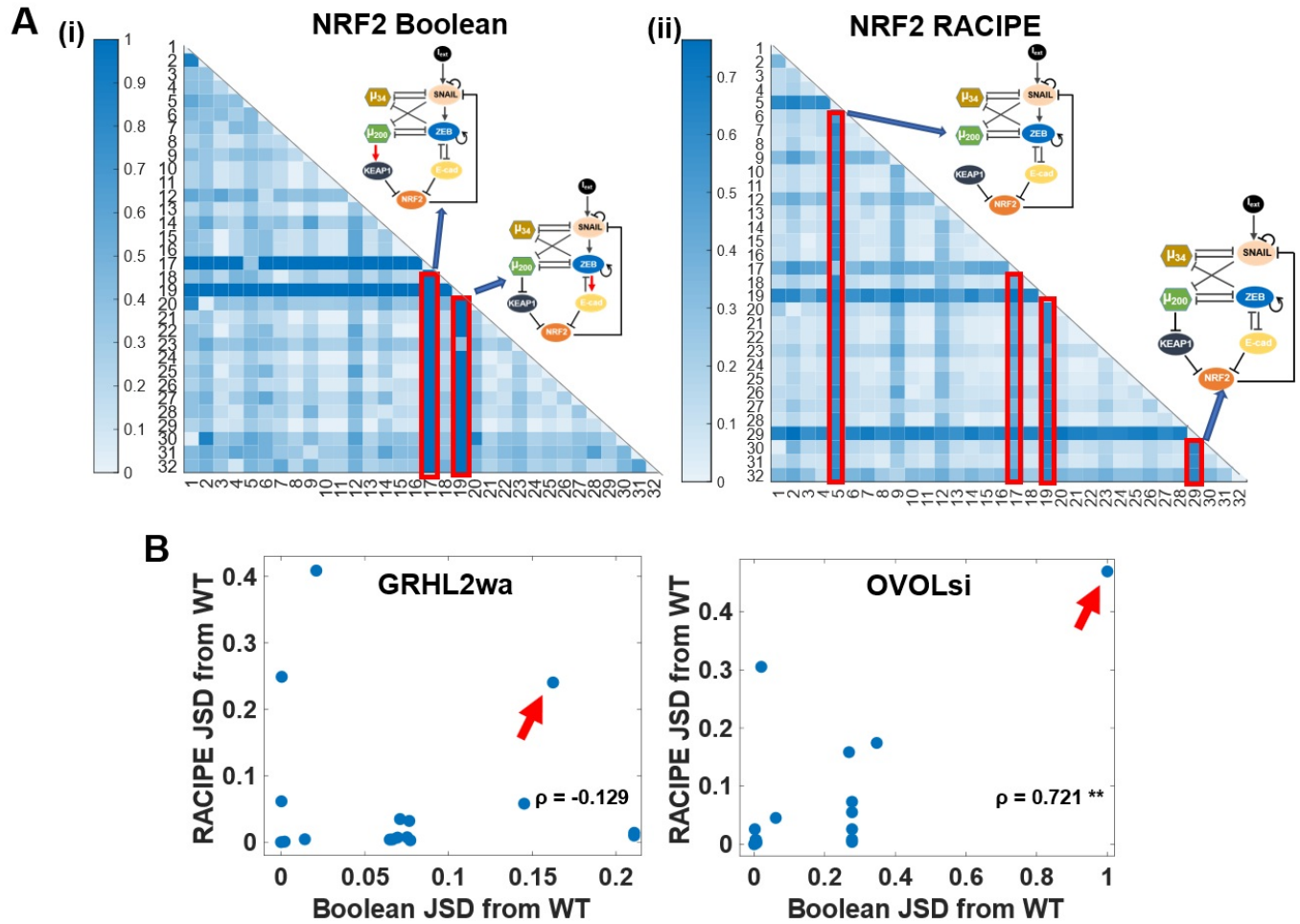


Figure S2: Effect of perturbations on phenotype distribution A. Heatmap of JSD of perturbations made to NRF2 network from each other (no edge additions) as obtained from i) Boolean and ii) RACIPE. Network 10 is 'wild-type'. The strongest perturbations are highlighted and the corresponding networks are shown with the heatmap. B. Scatter plots of JSD of perturbed networks from WT obtained from Boolean and RACIPE for GRHL2wa and OVOLsi.

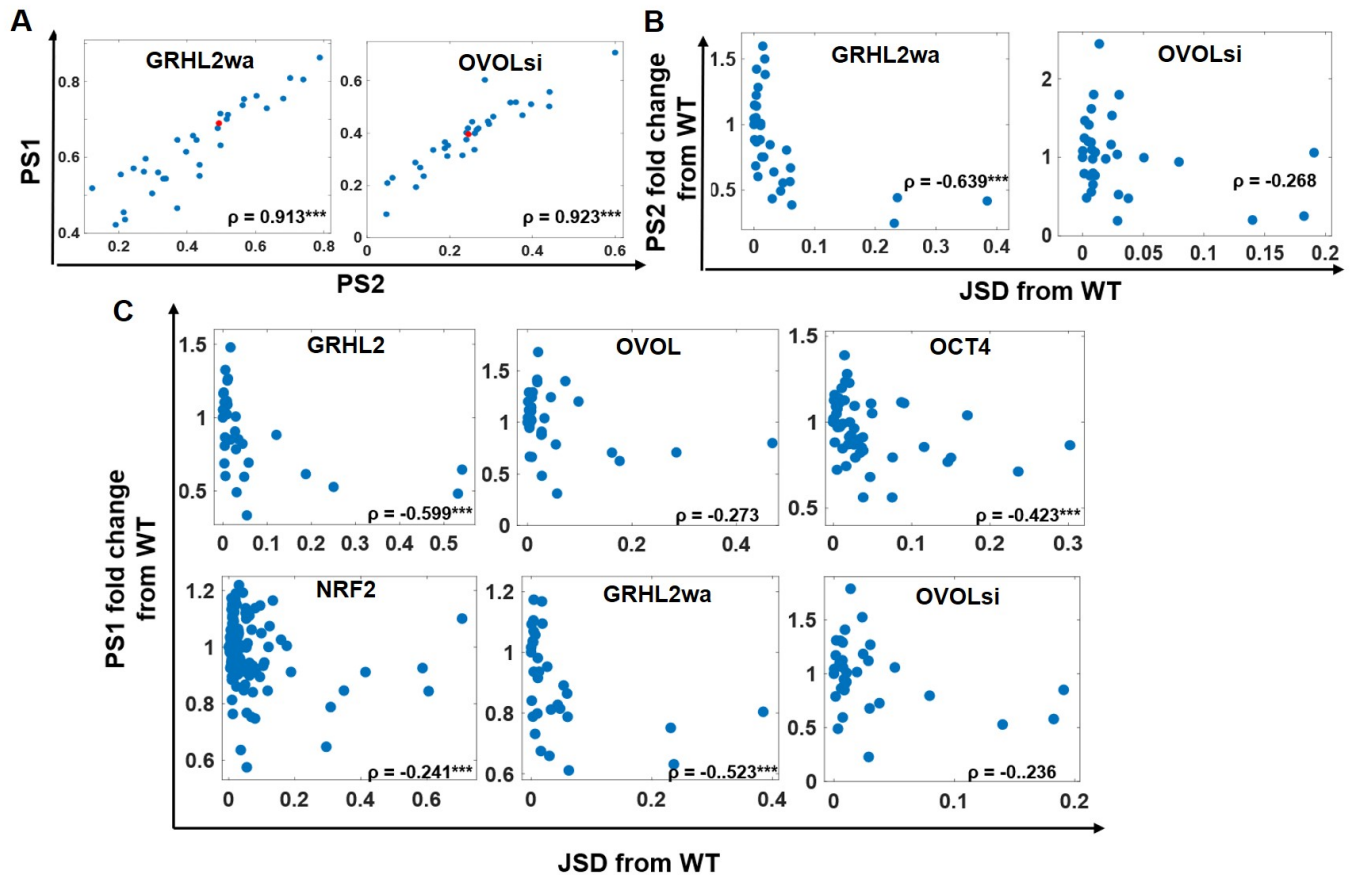


Figure S3: Effect of JSD on phenotypic plasticity A. Scatter plot between PS1 and PS2 for GRHL2wa and OVOLsi. B. Scatter plots for GRHL2wa and OVOLsi between fold change in plasticity vs change in phenotypic distribution (JSD). Each dot represents a perturbed network topology of the mentioned network. C. Same plots as B for all the networks, using PS1 instead of PS2

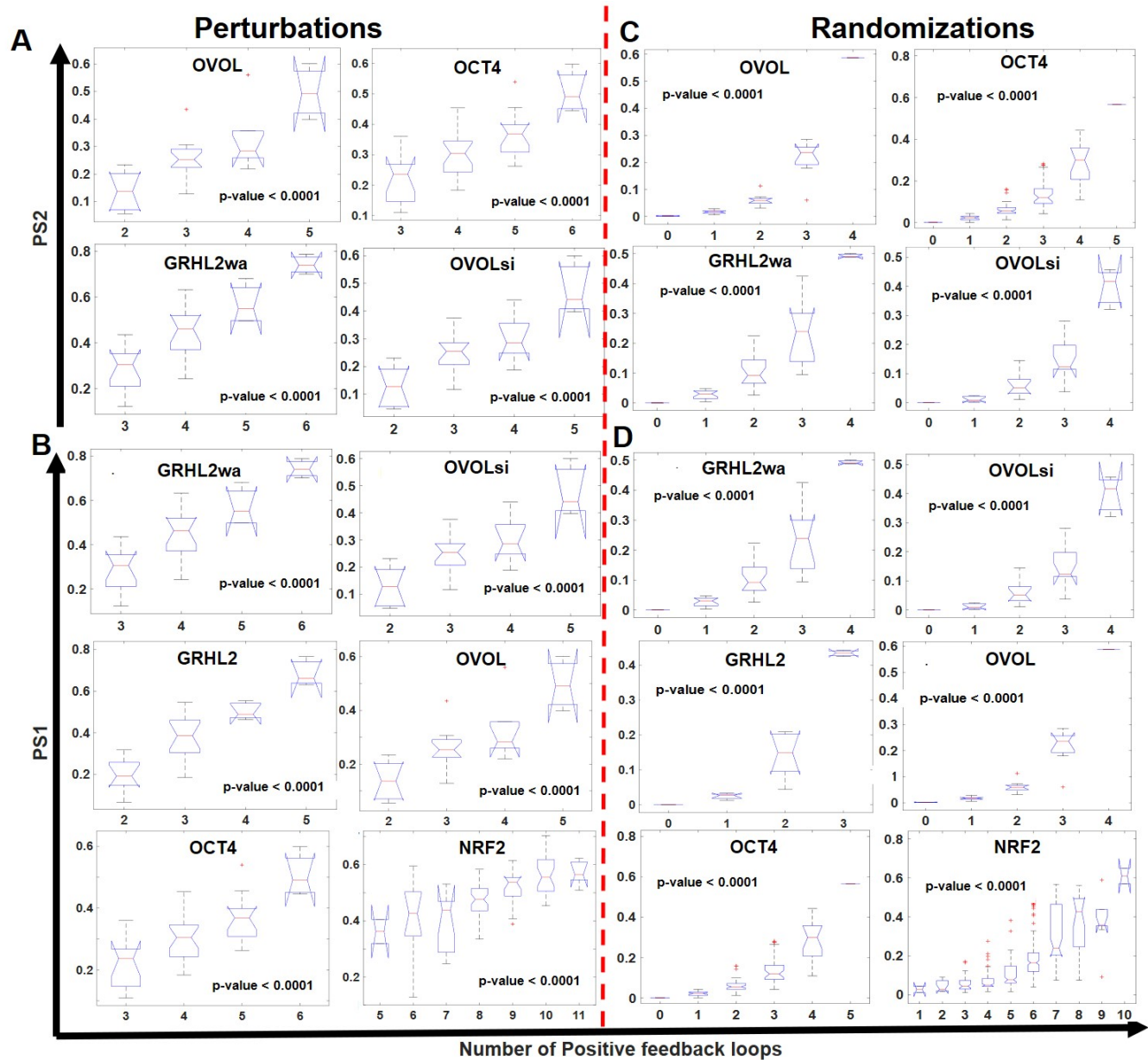


Figure S4: Effect of positive feedback loops on plasticity A. Box-plot of PS2 vs positive cycles for GRHL2wa and OVOLsi perturbed network topologies B. Box-plots of PS1 vs positive cycles for all perturbed network topologies corresponding to each EMP network C. Same as A but randomized circuits D. Same as B but randomized circuits

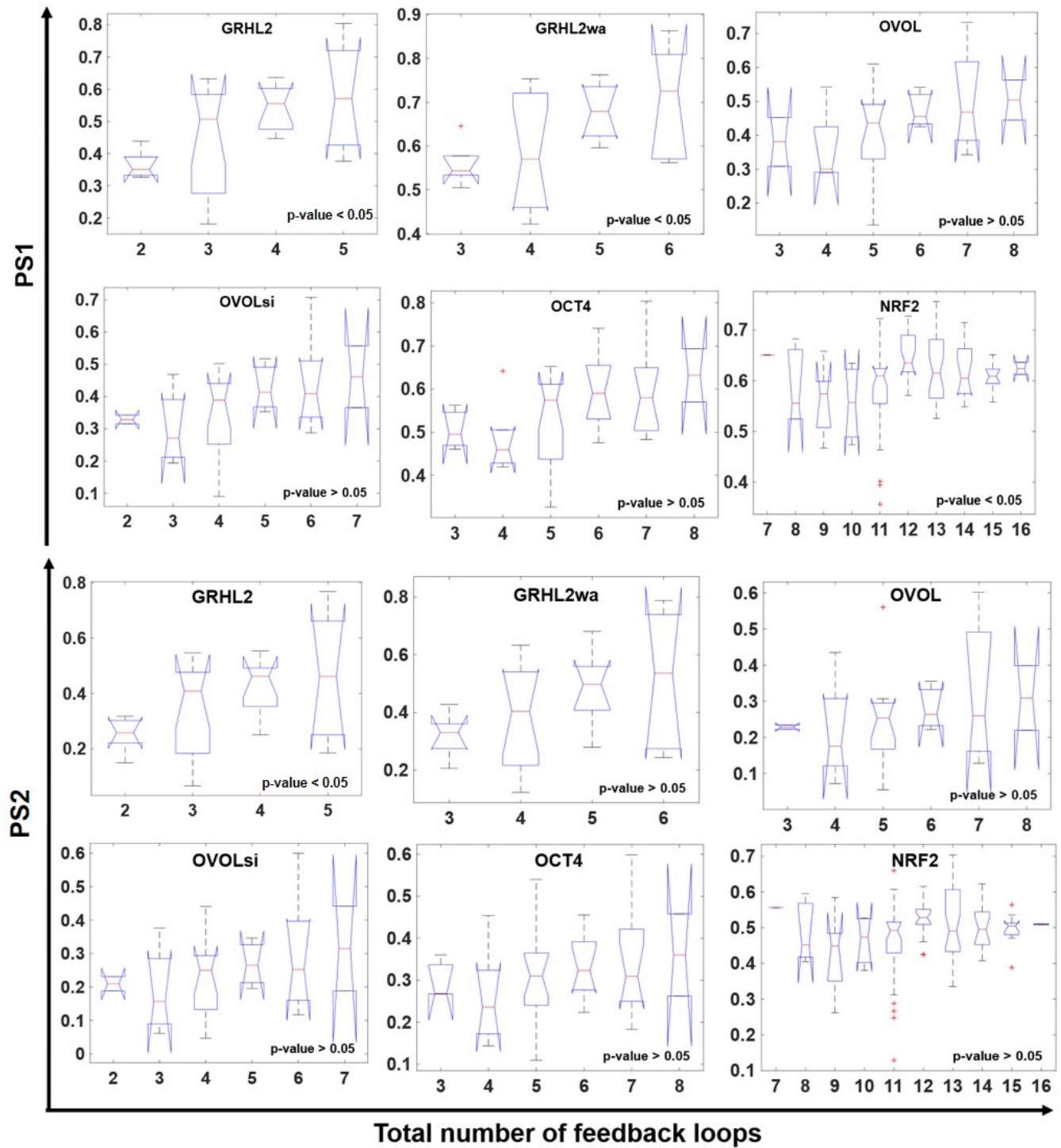


Figure S5: Effect of total number of feedback loops on network plasticity for perturbations of all 6 networks.



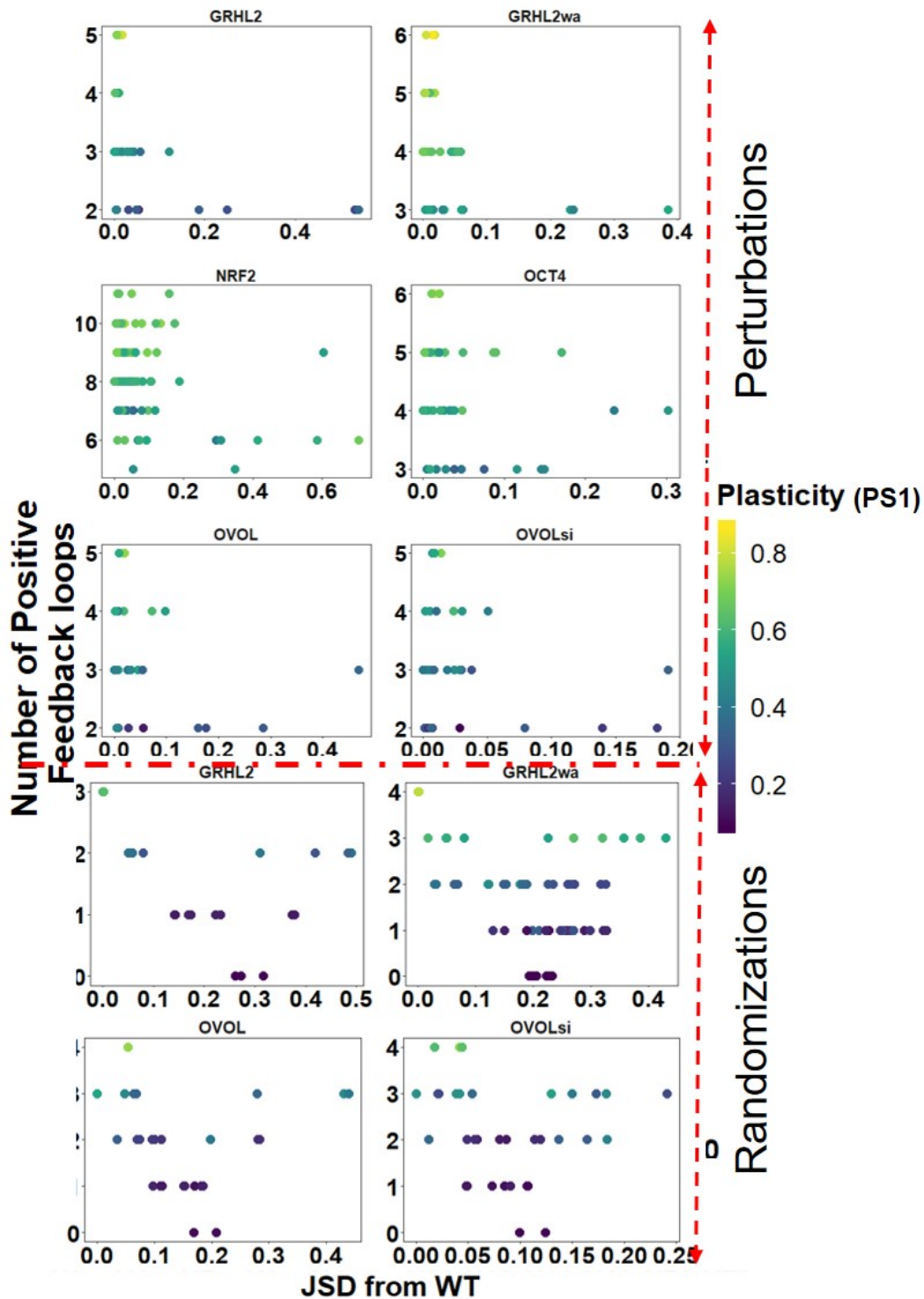


Figure S6: Combined effect of positive cycles and JSD on plasticity A. Positive cycles vs JSD scatter plots for perturbed network topologies of all 6 networks, colored according to plasticity B. Same as A but for randomized circuits

Table S1: GRHL2 single-edge perturbations including edge-additions. A given single edge perturbation is named as : FromNode-ToNode\_OriginalEdge-PerturbedEdge. 0 : no edge, 1: activation, 2: inhibition

Label	Network
1	GRHL2-GRHL2_0-1
3	ZEB-miR200_2-1
4	GRHL2-GRHL2_0-2
5	miR200-miR200_0-1
6	miR200-ZEB_2-0
7	miR200-ZEB_2-1
8	SNAIL-SNAIL_0-1
9	ZEB-miR200_2-0
10	ZEB-ZEB_1-0
11	ZEB-ZEB_1-2
12	ZEB-GRHL2_2-0
13	ZEB-GRHL2_2-1
14	SNAIL-GRHL2_0-1
15	SNAIL-GRHL2_0-2
16	GRHL2-ZEB_2-0
17	GRHL2-ZEB_2-1
18	SNAIL-ZEB_1-2
19	GRHL2-miR200_0-1
20	GRHL2-SNAIL_0-2
21	GRHL2-miR200_0-2
22	GRHL2-SNAIL_0-1
23	SNAIL-ZEB_0-1
24	miR200-GRHL2_0-1
25	SNAIL-ZEB_0-2
26	SNAIL-ZEB_1-0
27	miR200-GRHL2_0-2
28	miR200-miR200_0-2
29	miR200-SNAIL_0-1
30	miR200-SNAIL_0-2
31	SNAIL-miR200_2-0
32	SNAIL-miR200_2-1

Table S2: NRF2 perturbations without edge-additions. A given single edge perturbation is named as : FromNode-ToNode.PreviousEdge-OriginalEdge. 0 : no edge, 1: activation, 2: inhibition

Label	Network
1	Keap1-NRF2_2-0
2	E-cad-NRF2_2-1
3	ZEB-ZEB_1-2
4	ZEB-miR34_2-0
5	miR200-Keap1_2-0
6	ZEB-miR200_2-0
7	SNAIL-miR34_2-0
8	SNAIL-ZEB_1-2
9	miR34-SNAIL_2-0
10	SNAIL-SNAIL_2-0
12	ZEB-miR200_2-1
13	miR200-ZEB_2-1
14	NRF2-SNAIL_2-1
15	E-cad-ZEB_2-1
16	ZEB-ZEB_1-0
17	miR200-Keap1_2-1
18	SNAIL-miR34_2-1
19	ZEB-E-cad_2-1
20	E-cad-NRF2_2-0
21	I-SNAIL_1-2
22	E-cad-ZEB_2-0
23	ZEB-E-cad_2-0
24	miR200-ZEB_2-0
25	SNAIL-miR200_2-0
26	SNAIL-SNAIL_2-1
27	SNAIL-miR200_2-1
28	NRF2-SNAIL_2-0
29	SNAIL-ZEB_1-0
30	Keap1-NRF2_2-1
31	miR34-SNAIL_2-1
32	ZEB-miR34_2-1