

Early peripheral clearance of leukemia-associated immunophenotypes in AML: centralized analysis of a randomized trial

Giacomo Gianfaldoni,^{1,*} Francesco Mannelli,^{1,2,*} Tamara Intermesoli,³ Sara Bencini,^{1,4} Damiano Giupponi,³ Giorgio Farina,⁵ Ilaria Cutini,^{1,6} Maria Ida Bonetti,¹ Arianna Masciulli,³ Ernesta Audisio,⁷ Dario Ferrero,⁸ Chiara Pavoni,³ Anna Maria Scattolin,⁹ Alberto Bosi,¹ Alessandro Rambaldi,³ and Renato Bassan⁹

¹ Struttura Organizzativa Dipartimentale (SOD) Ematologia, Università di Firenze, and ²Centro Ricerca e Innovazione Malattie Mieloproliferative, Azienda Ospedaliero-Universitaria (AOU) Careggi, Florence, Italy; ³Unità Strutturale Complessa di Ematologia, Azienda Ospedaliera Papa Giovanni XXIII, Bergamo, Italy; ⁴Centro Diagnostico di Citofluorimetria e Immunoterapia, AOU Careggi, Florence, Italy; ⁵Unità Operativa Laboratorio Analisi-Citofluorimetria, Ospedale dell'Angelo, Mestre-Venezia, Italy; ⁶SOD Terapie Cellulari e Medicina TrASFusionale, AOU Careggi, Florence, Italy; ⁷Struttura Complessa di Ematologia, Ospedale Molinette, Turin, Italy; ⁸Divisione di Ematologia, Università di Torino, Azienda Ospedaliera S. Giovanni Battista, Turin, Italy; and ⁹Unità Operativa di Ematologia, Ospedale dell'Angelo, Mestre-Venezia, Italy

Key Points

- Early peripheral blast clearance assessed by flow cytometry was a powerful independent predictive factor of treatment outcome.
- Clearance rate correlated significantly with induction intensity, supporting the use of this assay in treatment modulation studies.

Although genetics is a relevant risk factor in acute myeloid leukemia (AML), it can be minimally informative and/or not readily available for the early identification of patients at risk for treatment failure. In a randomized trial comparing standard vs high-dose induction (ClinicalTrials.gov #NCT00495287), we studied early peripheral blast cell clearance (PBC) as a rapid predictive assay of chemotherapy response to determine whether it correlates with the achievement of complete remission (CR), as well as postremission outcome, according to induction intensity. Individual leukemia-associated immunophenotypes (LAIPs) identified pretherapy by flow cytometry were validated and quantified centrally after 3 days of treatment, expressing PBC on a logarithmic scale as the ratio of absolute LAIP⁺ cells on day 1 and day 4. Of 178 patients, 151 (84.8%) were evaluable. Patients in CR exhibited significantly higher median PBC (2.3 log) compared with chemoresistant patients (1.0 log; $P < .0001$). $PBC < 1.0$ predicted the worst outcome (CR, 28%). With 1.5 log established as the most accurate cutoff predicting CR, 87.5% of patients with $PBC > 1.5$ (PBC_{high} , $n = 96$) and 43.6% of patients with $PBC \leq 1.5$ (PBC_{low} , $n = 55$) achieved CR after single-course induction ($P < .0001$). CR and PBC_{high} rates were increased in patients randomized to the high-dose induction arm ($P = .04$) and correlated strongly with genetic/cytogenetic risk. In multivariate analysis, PBC retained significant predictive power for CR, relapse risk, and survival. Thus, PBC analysis can provide a very early prediction of outcome, correlates with treatment intensity and disease subset, and may support studies of customized AML therapy.

Introduction

Acute myeloid leukemia (AML) is a heterogeneous disease with large variations in prognosis. Among prognostic factors, karyotype and molecular genetics are the most relevant and represent the framework of the European LeukemiaNet (ELN) risk stratification system.^{1,2} Large clinical studies have established the adequacy of this classification, which provides a general prediction of a priori AML chemosensitivity and correlates with the achievement of complete remission (CR) and long-term survival.^{3,4} Nevertheless, the response to induction chemotherapy remains a powerful prognostic parameter. Within responsive

Submitted 7 May 2019; accepted 20 December 2019; published online 24 January 2020. DOI 10.1182/bloodadvances.2019000406.

*G.G. and F.M. contributed equally to this work.

Data sharing requests should be sent to Francesco Mannelli (francesco.mannelli@unifi.it).

The full-text version of this article contains a data supplement.

© 2020 by The American Society of Hematology

patients who enter CR, minimal residual disease (MRD) is emerging as a strong adjunctive tool to refine the initial genetic risk category.⁵⁻⁷ Typically, MRD is evaluated after ≥ 1 chemotherapy course. In some studies, an early evaluation of bone marrow (BM) status 7 days after completion of induction chemotherapy has been shown to predict outcome, pointing out the importance of the early disappearance of AML blasts.⁸

To assess an earlier prognostic parameter, several studies have evaluated the kinetics of AML cell reduction in peripheral blood (PB) samples after a few days of induction chemotherapy. Studies based on a morphological analysis of blood smears have been informative for separating patients with different induction outcomes and prognoses.^{9,10} The French group Groupe Ouest Est Leucémies Aigues Myeloblastiques studied decreases in blast cells by multiparameter flow cytometry (MFC), showing a clear correlation with outcome.¹¹ In that study, blast cell decrease was expressed by a time-to-clearance modality between baseline and the day that 90% of the initial blast cell load had disappeared.¹¹ Another MFC study from China confirmed that patients with quicker blast reduction had greater CR and lower relapse rates.¹²

In a pilot study using daily MFC analysis of peripheral blast clearance (PBC), we demonstrated a clear dichotomy between responsive and refractory patients from day 2 of induction therapy, establishing day 4 as the most informative PBC time point for estimating the probability of a response.^{13,14} Despite the fact that PBC was a powerful prognostic indicator for CR achievement and survival in all of these studies, no clinical study has been designed to assess PBC-related results in a prospective phase 3 trial comparing different induction chemotherapy regimens. These types of data would greatly increase the interest in using PBC analysis for PBC-modulated induction trials because of the potential advantage offered by rapid customization of chemotherapy intensity in patients classified as being at high risk for failure. To collect this evidence and validate the findings of the pilot single-center study in a larger multicenter setting with centralized analysis, the PBC study was embedded in the Northern Italy Leukemia Group (NILG) AML 02/06 phase 3 trial,¹⁵ in which adult AML patients were randomly allocated to standard- or high-dose CR induction chemotherapy. The aim of the PBC study was to compare PBC responses and related therapeutic outcomes in the 2 randomization cohorts and across different AML risk subsets.

Patients and methods

Patients and AML diagnosis

Eligible patients had a diagnosis of untreated AML, according to World Health Organization criteria.¹⁶ AML subtypes were defined by cytogenetics, histopathology, and molecular genetics.¹⁷ For the NPM1 mutation, core marrow biopsies were studied at the Institute of Hematology, Perugia University (Italy).¹⁸ For molecular biology (MLL and core binding factor [CBF] gene rearrangements, FLT3 internal tandem duplication, and CEBPA mutations), fresh blood and marrow samples and frozen DNA/RNA samples were studied at the Hematology Unit, Bergamo Hospital (Italy).¹⁹⁻²¹

Treatment protocol

The NILG AML 02/06 trial (ClinicalTrials.gov Identifier: NCT00495287) included randomization between a standard CR induction arm with 12 mg/m² per day of idarubicin IV on days 1 through 3, 100 mg/m²

per day of etoposide IV on days 1 through 5, and 100 mg/m² twice-daily cytarabine IV over 1 hour on days 1 through 7 (ICE) vs a high-dose sequential (HDS) arm with 2000 mg/m² twice-daily cytarabine IV over 2 hours on days 1, 2, 8, and 9 and 18 mg/m² per day of idarubicin IV on days 3 and 10. Preinduction hydroxyurea was allowed in patients with blood counts $>50 \times 10^9/L$. Other treatment details, including consolidation therapy, risk-oriented allotransplantation strategy, and risk definition criteria, were published previously.¹⁵

PBC study

The PBC project was approved as a secondary trial objective with a study amendment issued in April of 2009 by the Ethical Committee of the coordinating institution (Department of Hematology, Florence University Hospital, Florence, Italy) and other participating centers. Written informed consent was obtained from trial patients in accordance with the Declaration of Helsinki. MFC study files reporting individual LAIP profiles were acquired locally according to predefined standard operative procedures. LAIPs were defined by antigen expression on blast cells from fresh diagnostic BM samples. Standard MFC methodology for LAIP definition and detection and the PBC study is detailed in supplemental Files S1 and S2.1. Four LAIP types were considered: cross-lineage antigen expression, asynchronous antigen expression, lack of antigen expression, and antigen overexpression (supplemental File S1).^{6,22,23} To ensure optimal sensitivity, inclusion in the PBC study required the presence of ≥ 100 circulating LAIP⁺ cells per microliter at diagnosis. Case-specific LAIP⁺ cells were enumerated on EDTA-anticoagulated samples of PB collected before chemotherapy on days 1 and 4 of the first induction course. Based on previous studies, day 4 was chosen as the earliest possible informative PBC time point.¹⁴ MFC files, blinded with regard to clinical and biological features, were sent electronically to the coordinating center for review and data analysis. The study was performed using a BD FACSCanto II flow cytometer equipped with BD FACSDiva Software (both from BD Biosciences, San Jose, CA) for data acquisition. The files were analyzed using Infinicyt software (Cytognos, Salamanca, Spain), and PBC data were entered into electronic case report forms. PBC was expressed as the ratio between the absolute LAIP⁺ cell count pretherapy on day 1 and pretherapy on day 4 converted to a logarithmic (base 10) scale (Figure 1A).

Definitions

The definitions of CR, nonresponsive (NR) disease, early induction death (ED), recurrence, disease-free survival (DFS), event-free survival (EFS), cumulative incidence of relapse (CIR), and overall survival (OS) were based on standard criteria,²⁴ as reported in the treatment protocol (supplemental File S1). For risk definition, patients were stratified according to the original NILG study design and the ELN 2010 system in post hoc analysis.¹ In the NILG risk classification, the standard-risk (SR) group included patients with CBF⁺ AML and those with normal or intermediate-risk cytogenetics/genetics, without any of the following additional risk factors: diagnosis of minimally differentiated AML, erythroleukemia, megakaryoblastic leukemia, granulocytic sarcoma, or central nervous system leukemia; prior myelodysplastic syndrome (MDS) or myeloproliferative neoplasm (MPN); prior malignancy treated with radiotherapy/antineoplastic drugs; white blood cell (WBC) count $>50 \times 10^9/L$; or FLT3 mutations. All other patients were included

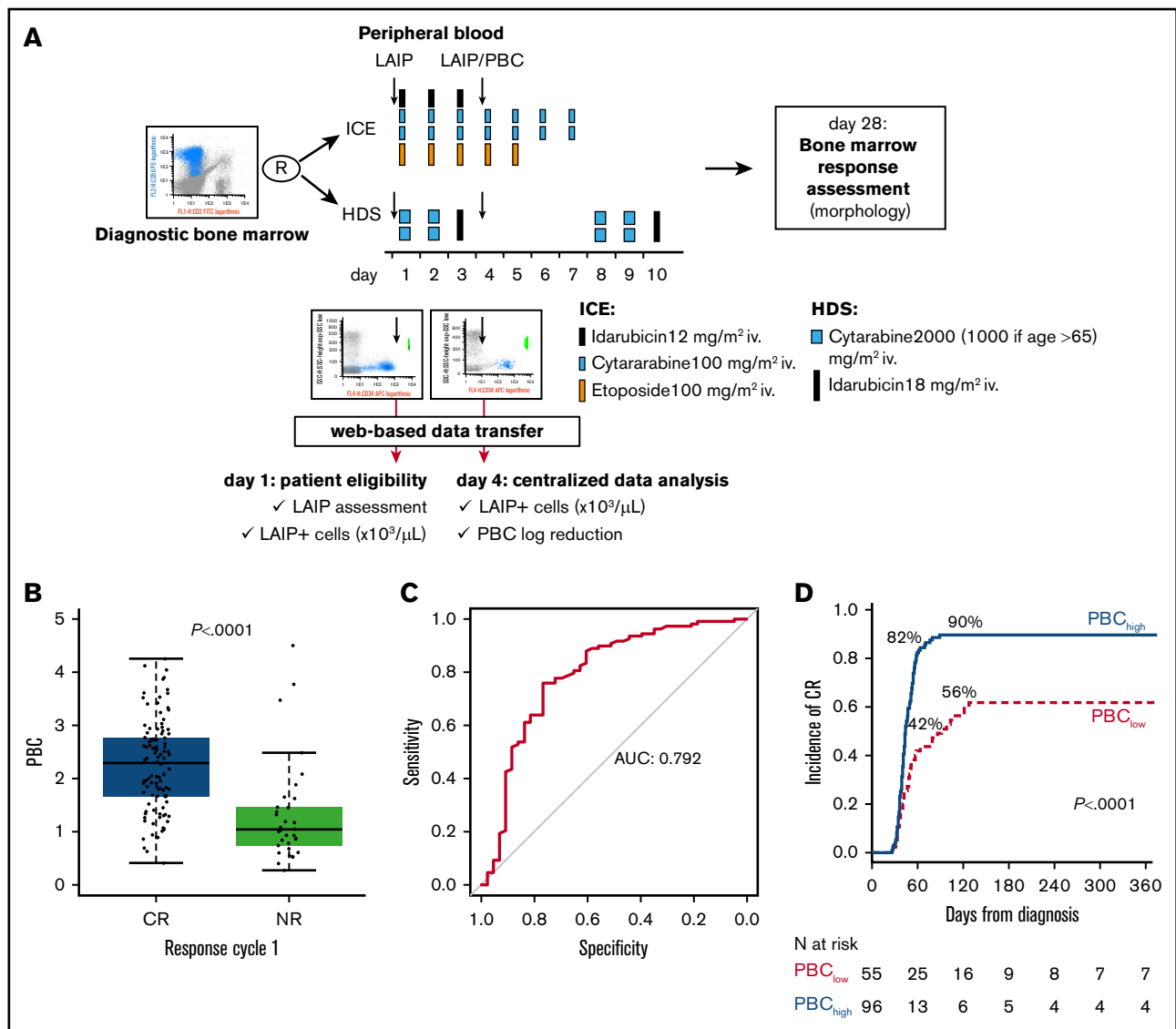


Figure 1. Overall design of PBC study and correlation with response to induction. (A) Design of the study of PBC within NILG AML trial 02/06. The trial provided a randomization (R) between standard (ICE) and intensified (HDS) induction chemotherapy. Along treatment, on day 1 and day 4, cells bearing a previously identified aberrant immune-phenotype (LAIP) were quantified by multiparameter flow cytometry, and files were transmitted to the Coordinating Center for central analysis of data and PBC calculation. (B) Box plots show the distribution of PBC values according to response to first cycle. (C) ROC curve methodology allowed setting 1.5 logs as the best cutoff at separating patients with significantly different outcomes. For this threshold, the area under the curve (AUC) was 0.792. (D) Time to achievement of CR according to PBC category (<1.5 log or ≥ 1.5 log).

in the high-risk (HR) category. The definitions of intermediate- and high-risk cytogenetics are reported in supplemental File S1. Using the ELN 2010 genetic classification system, patients were subdivided into good-risk, intermediate-risk 1, intermediate-risk 2, and adverse-risk groups.¹

Statistical analysis

Receiver operating characteristic (ROC) analysis was performed to assess the PBC threshold that best discriminated CR achievement after the first induction course. A cutoff that maximized the Youden's index was selected as the optimal threshold; in the case of equal values, the cutoff with better sensitivity was chosen. Patients who died during first induction were excluded from the

analysis. Pairwise comparisons between patient characteristics were performed using the Mann-Whitney *U* test or the Kruskal-Wallis test for continuous variables and Pearson's χ^2 test or Fisher's exact test for categorical variables. Survival was estimated by the Kaplan-Meier method, and long-term outcomes were compared using the log-rank test. The incidence of relapse and overall CR were assessed using the cumulative incidence function, considering death as a competing event. The Cox proportional hazard model was applied to estimate hazard ratios with 95% confidence intervals (CIs) for CR rate after 1 or 2 chemotherapy courses, CIR, DFS (ie, interval from CR to relapse or death), OS (ie, interval from study entry to death), and EFS (ie, interval from study entry to death, failure to achieve CR [2 courses], or relapse), in the

univariate and multivariate context. Otherwise, logistic regression was used to estimate odds ratios with 95% CIs for CR achievement after the first induction course. All *P* values were 2-sided, and a 5% significance level was fixed. Statistical analyses were performed with SAS version 9.4 and R version 3.5.0.

Results

Patients and LAIPs

The NILG AML 02/06 trial recruited 574 patients at 17 centers. Between April 2007 and March 2012, 4 main study sites adhered to the PBC project, enrolling 178 patients. A comparative analysis between studied and nonstudied patients ruled out any selection bias and confirmed a comparable distribution of pretreatment risk factors (Table 1) and similar outcomes (supplemental File S2.2). Twenty-seven eligible patients were excluded from the PBC study because of absent circulating blasts (*n* = 7, 3.9%), LAIP⁺ cell count < 100 per microliter (*n* = 3, 1.7%), or lack of suitable LAIP (*n* = 17, 9.6%). A total 151 patients (84.8%) exhibited sufficient LAIP⁺ cells within each of the 4 predefined LAIP subtypes and were assessable for the PBC study (supplemental File S2.3). The clinical characteristics of the 27 excluded patients were also comparable to the study population, with the exception of a higher leukocyte count (supplemental File S2.4). No significant difference emerged among patients in the 2 trial arms (ICE, *n* = 82; HDS, *n* = 69), with the exception of a higher median age for patients in the standard arm, imputable to the exclusion of many patients older than 65 years from the randomization (Table 1).

PBC study and CR induction

After the start of induction chemotherapy, the median absolute LAIP count in the entire study population of 151 PBC-evaluable patients decreased from 4198 per microliter (range, 120-148 859) at baseline to 41.8 per microliter (0.07-44 802) on day 4, resulting in a median PBC of 1.9 log (range, 0.30-4.50) after the first 3 days of chemotherapy. At the time of the evaluation of responses after induction course 1, 108 patients achieved CR (71.5%), 9 experienced an ED (6.0%), and 34 were declared NR (22.5%). NR patients exhibited significantly more residual LAIP⁺ cells on day 4 compared with CR patients and had a markedly lower median PBC of 1.0 log compared with 2.3 log (*P* < .001; Table 2; Figure 1B). PBC strata (<1.0 vs 1-1.5 vs >1.5) predicted a linear correlation with CR, with a very low CR rate in patients with PBC < 1.0 (28%) (supplemental File S2.5). The best predictive PBC cutoff for CR, evaluated by ROC methodology and correlating with the highest area under the curve AUC (0.792), was 1.5 log (Figure 1C; supplemental File S2.6). Using this cutoff, 96 of the 151 patients were in a high PBC range (>1.5 log; PBC_{high}), and 55 were in a low PBC range (≤1.5 log; PBC_{low}). Using these 2 distinct PBC ranges as possible predictive markers of different therapeutic responses, we found that 84 of 96 PBC_{high} patients (87.5%) achieved a CR with a single chemotherapy course, compared with only 24 of 55 PBC_{low} patients (43.6%, *P* < .0001). When evaluated after a second chemotherapy course administered to NR patients (*n* = 20), the CR rate increased to 90% and 62% in PBC_{high} (*n* = 86/96) and PBC_{low} (*n* = 34/55) patients, respectively (*P* < .0001), with overall NR rates of 6% and 29%, respectively. Consequently, the prognostic difference favoring the PBC_{high} group was also reflected in the time-to-CR analysis (Figure 1D).

PBC study and CR induction results according to randomization arm

By the time PBC was assessed, differences in chemotherapy included a 50% lower cumulative idarubicin dose (18 vs 36 mg/m²), a lack of etoposide (0 vs 300 mg/m²), and a substantial increase in cytarabine dose (8000 vs 600 mg/m²) and exposure time (12 hours vs 6 hours) in the HDS arm compared with the ICE induction arm. The single-course CR rate was 61% (*n* = 50/82) with ICE vs 84.1% (*n* = 58/69) with HDS (*P* = .002), with a lower incidence of resistant AML (30.5% vs 13%; *P* = .0106) and comparable ED rate (8.5% vs 2.9%; *P* = .18). The average therapy-related PBC response was 1.8 (0.3-4.5) in the ICE arm and 2.0 (range 0.6-4.2) in the HDS arm (*P* = .0375). After analyzing the results based on a high or low PBC response, more patients in the HDS arm exhibited a PBC_{high} profile compared with patients in the ICE arm (72.5% vs 56.1%, *P* = .04; Table 2). Altogether, the combined end point of a PBC_{high} response at day 4, followed by CR after a single induction course, was achieved in 47.5% (*n* = 39/82) and 72.4% (*n* = 45/69) of the patients in the ICE and HDS arms, respectively (*P* = .04). PBC results did not differ significantly among NR patients in either study arm.

PBC and prognostic analysis

Using univariate analysis, the achievement of CR was significantly affected by patient age, diagnosis of MDS/MPN-associated or secondary AML, risk classification (NILG or ELN), type of induction chemotherapy, and PBC. PBC strata also significantly affected the 5-year OS, DFS, EFS, and CIR (supplemental File S2.5). In multivariate analysis, a PBC_{high} profile was the most powerful predictive factor for CR after single-course induction (*P* < .0001), along with NILG or ELN risk class (Table 3). Considering the total CR rate after reinduction course 2, PBC and secondary disease maintained their independence, whereas risk stratification lost its impact (supplemental File S2.7). Because of the strong statistical relationship between PBC_{high} and CR after course 1, we investigated the role of pretreatment risk factors in predicting a good PBC response. A PBC_{high} status correlated significantly with a good patient performance score (univariate analysis only), the use of HDS induction chemotherapy, and a more favorable risk profile defined by NILG or ELN criteria (supplemental File S2.8). Thus, considering the ELN-defined subgroups, the average PBC response ranged from 2.32 for favorable risk to 2.06, 1.49, and 1.32 in the intermediate-1, intermediate-2, and adverse cytogenetic/genetic risk subsets (*P* < .0001); corresponding CR rates were 91%, 69%, 61%, and 46%, respectively. CR patients consistently expressed higher PBC values in each of the 4 risk categories (Figure 2). The proportion of patients with a PBC_{high} profile varied across the 4 risk subsets: 77% (*n* = 43/56), 57% (*n* = 20/35), 33% (*n* = 6/18), and 29% (*n* = 10/35) in the favorable-, intermediate-1, intermediate-2, and adverse-risk subsets, respectively (*P* < .0001). In contrast, NR rates varied from 9% to 54% (*P* < .0001), almost invariably in association with PBC_{low} results.

PBC and survival estimates

A secondary analysis was performed to assess whether PBC results affected the risk of relapse and survival parameters. PBC_{high} patients experienced significantly better long-term outcomes than did PBC_{low} patients, as indicated by comparative OS and EFS estimates (Figure 3). The postremission impact of a PBC_{high} or

Table 1. Patient characteristics

	Trial patients (N = 572)	PBC study patients		P*	
		All (N = 151)	ICE arm, n = 82 (54.3 %)		HDS arm, n = 69 (45.7%)
Age, median (range), y	52 (16-73)	53 (20-73)	59.5 (28-73)	47 (20-72)	<.0001
Males, n (%)	301 (52.6)	78 (51.7)	44 (53.66)	34 (49.28)	.5913
ECOG performance score, n (%)					.6338
0	292 (51.1)	77 (51.0)	39 (47.56)	38 (55.07)	
1	232 (40.6)	63 (41.7)	37 (45.12)	26 (37.68)	
2-3	48 (8.3)	11 (7.3)	6 (7.32)	5 (7.25)	
White blood cells, median (range), ×10 ⁹ /L	10.5 (0.5-990)	16.8 (1.0-282.0)	13.3 (1.2-282.0)	20.8 (1.0-260.0)	.3361
Hemoglobin, median (range), g/dL	9.1 (3-15.8)	9.2 (5.1-15.8)	9.5 (5.3-14.1)	8.8 (5.1-15.8)	.5376
Platelets, median (range), ×10 ⁹ /L	53 (2-852)	51.0 (2.0-852.0)	53.0 (2.0-373.0)	46.0 (10.0-852.0)	.2334
Diagnosis, n (%)					.6510
De novo AML	494 (86.4)	140 (92.7)	75 (91.46)	65 (94.20)	
Secondary (MPN/MDS)	49 (8.6)	9 (6.0)	5 (6.10)	4 (5.80)	
Therapy related	29 (5.1)	2 (1.3)	2 (2.44)	0 (0.00)	
Cytogenetics, n (%)					.1748
SR	52 (9.1)	22 (14.6)	9 (10.98)	13 (18.84)	
t(8,21)	20 (3.5)	10 (6.6)	6 (7.32)	4 (5.80)	
Inv(16)	31 (5.4)	11 (7.3)	3 (3.66)	8 (11.59)	
del(16)	1 (0.2)	1 (0.7)	0 (0.00)	1 (1.45)	
Normal (46 XX/XY)	272 (47.6)	70 (46.4)	45 (54.88)	25 (36.23)	
Intermediate risk	21 (3.7)	8 (5.3)	4 (4.88)	4 (5.80)	
HR	170 (29.7)	42 (27.8)	21 (25.61)	21 (30.44)	
Unknown	57 (10.0)	9 (6.0)	3 (3.66)	6 (8.70)	
Genetics					
<i>RUNX1-RUNX1T1</i> , n	558	144	75	69	.7481
Rearranged, n (%)	27 (4.8)	10 (6.9)	6 (8.0)	4 (5.8)	
<i>CBF-MYH11</i> , n	557	144	75	69	.0221
Rearranged n (%)	41 (7.4)	14 (9.7)	3 (4.0)	11 (15.9)	
<i>NPM1</i> , n	551	143	76	67	.1617
Mutant n (%)	167 (30.3)	47 (32.9)	28 (36.8)	19 (28.4)	
<i>FLT3-ITD</i> , n	569	145	76	69	.7990
Mutant n (%)	103 (18.1)	35 (24.1)	19 (25.0)	16 (23.2)	
<i>MLL-PTD</i> , n	397	119	68	51	.0445
Mutant n (%)	24 (6.0)	12 (10.1)	6 (8.8)	6 (11.8)	
<i>CEBPA</i> , n	361	150	81	69	.0239
Mutant (double mutation) n (%)	19 (5.3)	8 (5.3)	1 (1.2)	7 (10.1)	
NILG risk classification, n (%)					.1048
SR	156 (27.3)	51 (33.8)	23 (28.0)	28 (40.6)	
HR	416 (72.7)	100 (66.2)	59 (72.0)	41 (59.4)	
ELN 2010 risk classification, n	518	144	80	64	.1688
Favorable, n (%)	166 (32.0)	56 (38.9)	27 (33.8)	29 (45.3)	
Intermediate 1, n (%)	147 (28.4)	35 (24.3)	25 (31.2)	10 (15.6)	
Intermediate 2, n (%)	70 (13.5)	18 (12.5)	9 (11.3)	9 (14.1)	
Adverse, n (%)	135 (26.1)	35 (24.3)	19 (23.7)	16 (25.0)	

PBC study patients represented 26.3% of all trial patients and expressed comparable clinico-biologic and risk features. Among PBC study patients, those randomized to HDS chemotherapy were significantly younger than the control patients.

ECOG, Eastern Conference Oncology Group; ITD, internal tandem duplication.

*ICE vs HDS. Differences between treatment groups were evaluated using the Mann-Whitney *U* test for continuous variables and Pearson's χ^2 test (or Fisher's exact tests for cells <10) for categorical variables.

Table 2. Outcome to induction therapy after course 1 according to PBC response and randomization arm

	All patients	CR patients*	NR patients	ED patients	P†
Patients, n (%)	151 (100.0)	108 (71.5)	34 (22.5)	9 (6.0)	
LAIP⁺ cells/μL, median (range)					
Day 1	4 198.2 (120.4-148 859.3)	4 502.2 (134.2-106 933.8)	2 853.12 (120.4-148 859.3)	1 496.8 (1 558-71 331.8)	.24
Day 4	41.8 (0.1-44 802.3)	29.4 (0.1-11 035.5)	104.5 (0.2-44 802.3)	96.0 (1.8-627.8)	.001
PBC (log reduction)					
Median (range)	1.9 (0.3-4.5)	2.3 (0.4-4.3)	1.0 (0.3-4.5)	1.4 (0.5-2.9)	<.0001
PBC _{high} , n (%)	96 (63.6)	84 (77.8)	8 (23.5)	4 (44.4)	<.0001
PBC _{low} , n (%)	55 (36.4)	24 (22.2)	26 (76.5)	5 (55.6)	
PBC by randomization arm					
ICE arm (n = 82)					
Median (range)	1.8 (0.3-4.5)	2.2 (0.4-4.0)	1.0 (0.3-4.5)	1.4 (0.5-2.9)	<.0001
PBC _{high} , n (%)	46 (56.1)	39 (78.0)	4 (16.0)	3 (14.3)	<.0001
PBC _{low} , n (%)	36 (43.9)	11 (22.0)	21 (84.0)	4 (85.7)	
HDS arm (n = 69)					
Median (range)	2 (0.6-4.2)	2.4 (0.6-4.2)	1.5 (0.7-2.5)	1.4 (1.0-1.9)	.02
PBC _{high} , n (%)	50 (72.5)	45 (77.6)	4 (44.4)	1 (50.0)	.05
PBC _{low} , n (%)	19 (27.5)	13 (22.4)	5 (55.6)	1 (50.0)	
P (HDS vs ICE arm)	0.04	0.72	0.08	0.89	

*Number of CR patients in ICE arm (N = 82) vs HDS arm (N = 69): n = 50 (61%) vs n = 58 (84.1%) (P = .003).

†Mann-Whitney U test or Kruskal-Wallis test was used for continuous variables; Pearson's χ^2 test was used for categorical variables.

PBC_{low} profile in CR patients was better assessed in DFS and CIR graphs, with a significantly lower risk for relapse and higher DFS rate in the PBC_{high} group. In subset analyses matching PBC results with treatment arm, PBC_{low} patients from the nonintensive ICE arm had the worst outcome, whereas prognosis was improved without significant differences for PBC_{high} patients in either induction arm (Figure 4). In multivariate risk models, PBC and ELN or NILG risk scores were the 2 independent factors retaining a significant predictive power for DFS, EFS, CIR, and OS (supplemental File S2.9). In the main clinical trial, we found a strong independent correlation between survival and both HDS induction and allogeneic stem cell transplantation (SCT)¹⁵; therefore, we compared SCT-related effects in patients with PBC_{high} or PBC_{low} CR using the Mantel-Byar method and Simon-Makuch plots to correct for pre-SCT events considering SCT as a time-dependent variable. In this analysis of DFS and CIR, the outcome in PBC_{high} patients was further improved by SCT (n = 32/86); however, the same was not observed in PBC_{low} patients (n = 17/34). Repeating the same tests in HR patients strictly eligible for SCT according to trial design, the results were equally significant, with a greater efficacy of SCT in the PBC_{high} group and a partial nonsignificant protection from relapse in the PBC_{low} group (supplemental File S2.10).

Discussion

For decades, "7+3" chemotherapy (cytarabine plus an anthracycline) has remained the standard initial treatment for non-promyelocytic AML. Indeed, with this regimen, ~70% of younger patients achieve an initial CR.

Main clinical trials investigating intensified induction demonstrated an increased CR rate after a single course but only showed a clear benefit on survival in subgroups of patients.²⁵⁻²⁷

Given the heterogeneity of the disease, if applied uniformly, each 1 of these strategies turns out to be inappropriate. Current prognostic stratification drives the therapeutic approach in the post-CR phase, but it generally does not modulate the intensity of induction treatment, particularly in the large heterogeneous category of intermediate cytogenetics.²⁸

The early identification of patients likely to present primary treatment resistance would allow an early shift to more effective therapeutic alternatives. To this end, several lines of evidence support using the early kinetics of blast cell clearance from PB during induction therapy.⁹⁻¹⁴ To develop a prospective clinical application using such an approach, the 2 major issues of methodology and calculation modality need to be addressed carefully. Among the 3 methods used, morphology,^{9,10} MFC,¹¹⁻¹⁴ and molecular genetics,²⁹ morphology is the least adequate because of its dependence on operator and scarce standardization, particularly at later time points as a result of worsening cytopenia. By analogy, the place of modern automated cell counters in PBC analysis is yet to be determined. Molecular genetics would offer the highest level of standardization, but the need for genetic probes limits the spectrum of its applicability and, above all, it is time consuming, a major concern for a real-time PBC study. MFC offers the best balance between method standardization and real-time information, and a LAIP-based approach provides high specificity, especially with low blast fraction or monocytic differentiation. With regard to data interpretation, PBC was expressed as time to disappearance/reduction of blasts¹¹ or the normalized ratio between baseline and a predefined time point.¹²⁻¹⁴ The former approach is less suitable for a prospective multicenter and therapy-oriented trial because the study parameter fluctuates among patients, making study logistics challenging and

Table 3. Univariate and multivariate analysis for achievement of CR at R1 evaluation

	CR/N (%)	Univariate		Multivariate*			
		OR (95% CI)	P	OR (95% CI)	P	OR (95% CI)	P
Age, y							
<60	77/95 (81.1)	3.45 (1.65-7.20)	.001	2.55 (0.99-6.57)	.05	2.37 (0.82-6.88)	.11
≥60	31/56 (55.4)	1.00		1.00		1.00	
Sex							
Male	53/78 (67.9)	1.00		1.00		1.00	
Female	55/73 (75.3)	1.44 (0.71-2.94)	.32	1.33 (0.54-3.27)	.53	1.07 (0.40-2.82)	.89
WBCs, ×10⁹/L							
≤50	75/108 (69.4)	1.00				1.00	
>50	33/43 (76.7)	1.45 (0.64-3.29)	.37			1.18 (0.40-3.51)	.77
AML							
Secondary	4/11 (36.4)	1.00				1.00	
De novo	104/140 (74.3)	5.06 (1.40-18.29)	.01			3.25 (0.61-17.22)	.17
ECOG performance status							
0	62/77 (80.5)	3.44 (0.93-12.82)	.07	1.61 (0.33-7.81)	.55	1.77 (0.33-9.65)	.51
1	40/63 (63.5)	1.45 (0.40-5.28)	.57	1.20 (0.25-5.69)	.82	1.25 (0.23-6.71)	.79
2	6/11 (54.5)	1.00		1.00		1.00	
NILG risk class							
SR	46/51 (90.2)	5.64 (2.06-15.44)	.0008	3.64 (1.17-11.35)	.02		
HR	62/100 (62.0)	1.00		1.00			
ELN 2010 risk class†							
Favorable	51/56 (91.1)	12.11 (3.90-37.65)	<.0001			5.90 (1.57-22.18)	.008
Intermediate 1	24/35 (68.6)	2.59 (0.98-6.87)	.05			1.41 (0.40-4.90)	.59
Intermediate 2	11/18 (61.1)	1.87 (0.59-5.94)	.29			1.03 (0.25-4.26)	.97
Adverse	16/35 (45.7)	1.00				1.00	
Treatment							
ICE	50/82 (61.0)	1.00		1.00		1.00	
sHD	58/69 (84.1)	3.38 (1.54-7.38)	.002	2.27 (0.90-5.71)	.08	2.38 (0.84-6.71)	.10
PBC							
<1.5	24/55 (43.6)	1.00		1.00		1.00	
≥1.5	84/96 (87.5)	9.04 (4.04-20.24)	<.0001	7.01 (2.91-16.91)	<.0001	5.87 (2.22-15.53)	.0004

OR, odds ratio.

*Two multivariate models including different risk classifications (model with NILG risk excludes factors already considered in the risk construction).

†Evaluable patients = 144.

hampering the consistency of PBC assessment and possible PBC-based interventions.

Using a normalized PBC ratio platform combining diagnostic precision with ease of implementation, our study demonstrated a strong positive correlation among a PBC_{high} response (>1.5 log by ROC analysis), CR obtained after single-course chemotherapy, and improved outcome with lower relapse risk and better survival. The prognostically favorable PBC-related effect was largely independent of other risk factors and was confirmed by multivariate statistical analysis. With regard to its predictive power, we documented that 84 and 87 of 96 PBC_{high} patients achieved CR at course 1 (87.5%) or later (90.6%), respectively. The proportions increased to 91.3% and 94.5%, respectively, after the exclusion of 4 patients experiencing induction death during aplasia whose BM was not examined for morphological CR. Thus, the predictive power

of the method for CR was close to 95% in fully evaluable patients, with only 8 patients not exhibiting a relationship between PBC_{high} status and CR. In these patients, we can argue that the selected LAIP was not sufficiently representative of the dominant AML clone, it changed rapidly toward a chemoresistant subclone, and/or there were other unrecognized adverse characteristics (eg, marrow fibrosis); alternatively, it might have reflected a fast kinetic relapse after a transient good PBC response. In these 8 patients we observed a high incidence of secondary disease (supplemental File S2.11), which suggests the influence of a higher clonal heterogeneity in PBC assessment. Tracking leukemic stem cells may provide further insight into actual disease chemosensitivity, as proposed previously.³⁰ In the future, dissecting the clonal heterogeneity of AML with new mass cytometry techniques could improve the sensitivity and predictive power of PBC and MRD studies for clinical use.³¹ Moreover, in our study, the predictive role of CR in

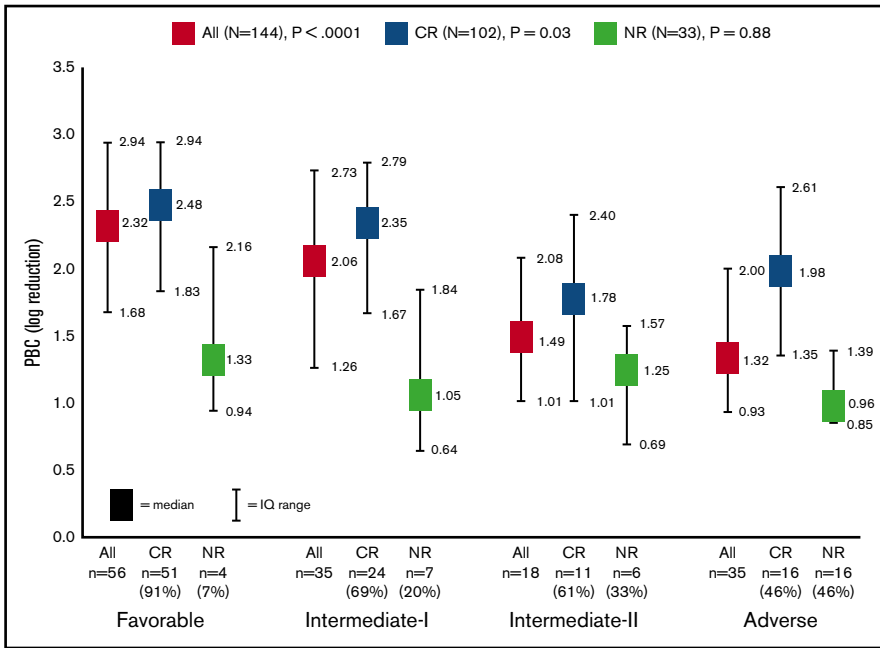


Figure 2. Distribution of PBC values according to ELN categories and response to first induction cycle. The rate of CR decreased from 91% to 46% in parallel with increasing disease risk according to ELN stratification ($P < .0001$).

conjunction with a PBC_{high} profile was validated in all risk subsets defined by genetics/cytogenetics (ELN classification), with different PBC and CR rates reflecting the disease biology. The vast majority (87%) of ELN favorable-risk patients belonged to the PBC_{high} group, compared with less than half (44.4%) of the ELN adverse-risk

patients; the ELN intermediate-risk categories had intermediate PBC behavior (67.3% and 48.1% of ELN intermediate-risk 1 and 2 cases were PBC_{high} , respectively). The clinical correlation was significant, because the CR rate decreased progressively across the 4 ELN risk categories.

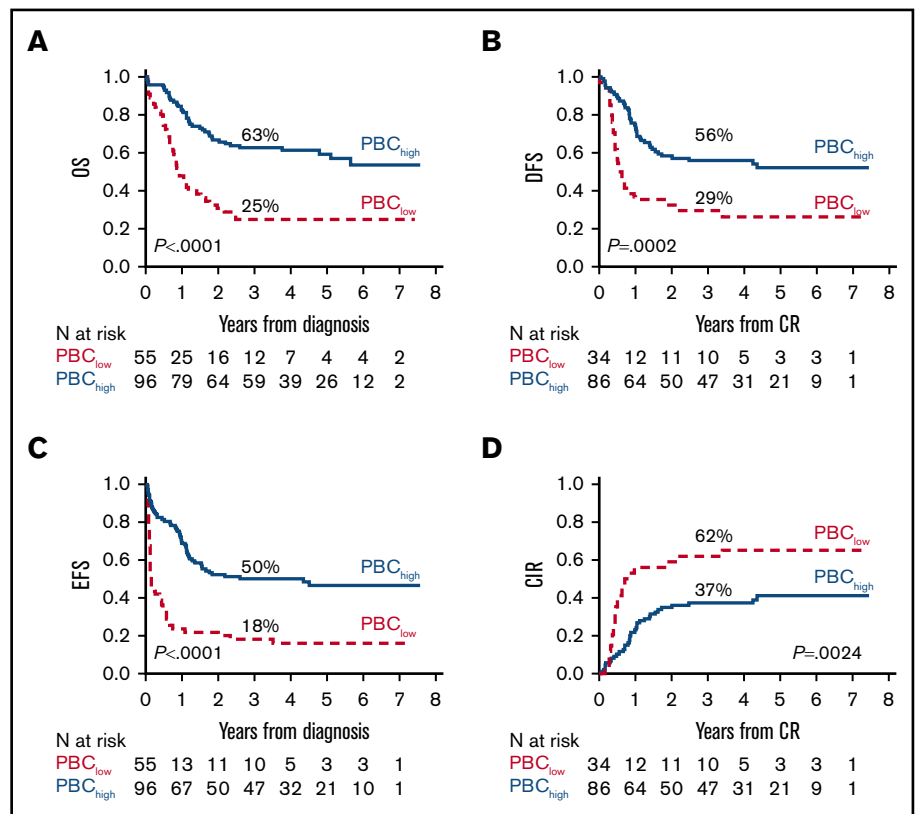


Figure 3. Major outcomes according to PBC-related groups (<1.5 log or ≥ 1.5 log). (A) OS. (B) DFS. (C) EFS. (D) Cumulative incidence of relapse (CIR).

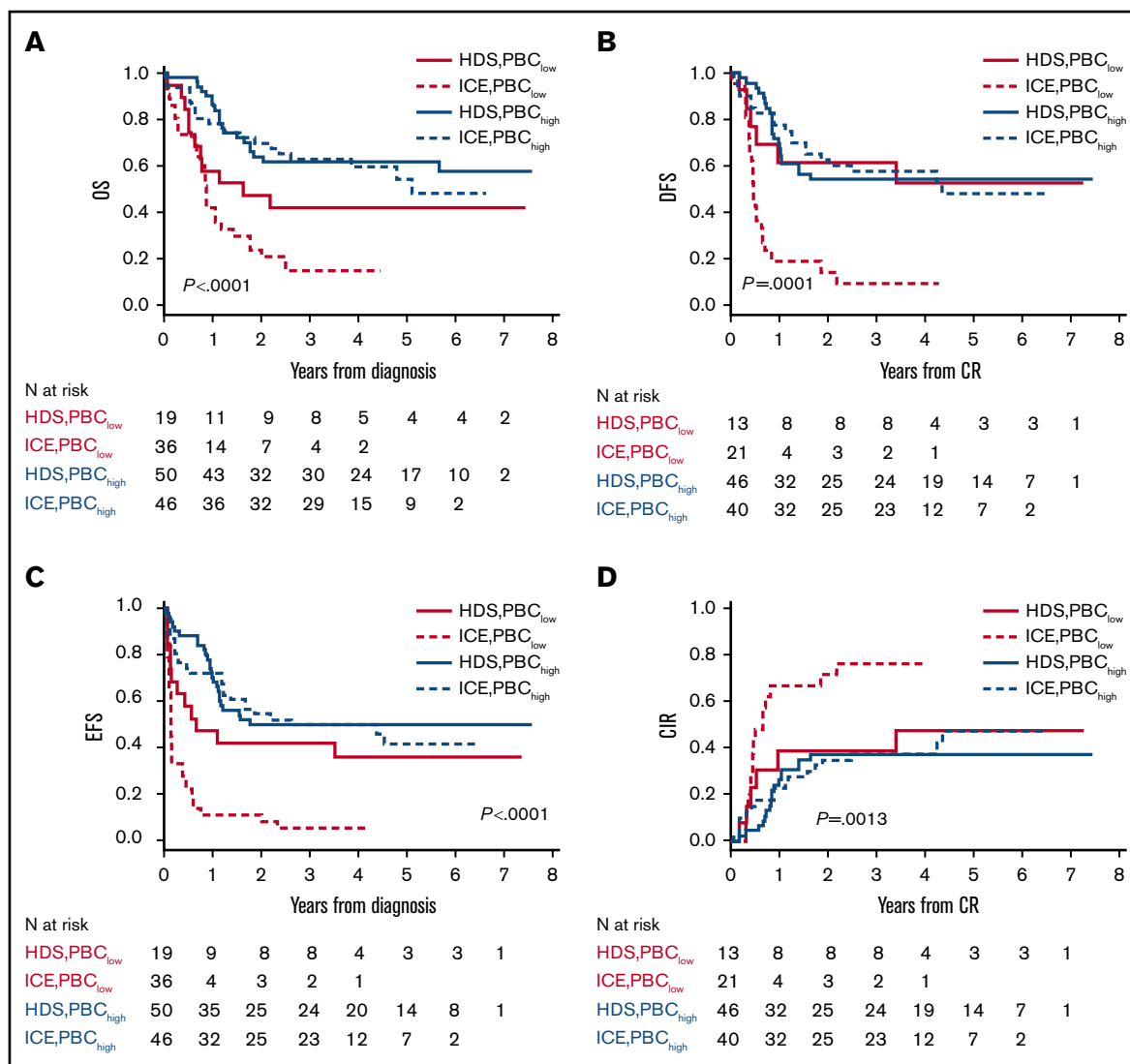


Figure 4. Major outcomes according to PBC-related groups (<1.5 log or ≥1.5 log) and treatment arm (ICE or HDS). (A) OS. (B) DFS. (C) EFS. (D) CIR.

In contrast, the PBC_{low} group exhibited a markedly lower probability of CR (43.6%, $P < .0001$), especially with a PBC < 1.0 (CR 28%), and much higher chemoresistance rates. Although the PBC_{low} profile was not as sensitive a predictor of resistance as PBC_{high} was for CR, because nearly half of PBC_{low} patients achieved CR, PBC_{low} CR patients had significantly shorter DFS with a higher incidence of relapse. This suggests an interaction between PBC_{low} scores and higher risk stratification (as shown in ELN risk class analysis) and higher residual leukemic burden compared with PBC_{high} patients, despite morphological CR. Although a post-induction MRD study was not performed in this trial, this correlation was reported by other investigators, which suggests that combining PBC and MRD data may lead to more precise identification of the patients who are at the highest risk of failure within each AML risk subset. Because a significant proportion of PBC_{high} patients also relapsed, postinduction MRD analysis (with molecular probe or LAIP sensitivity $\geq 10^{-4}$; ie, ≥ 3 log) should be routinely performed to more accurately define the risk category and to guide treatment choices.³²

Another main point of this study was the comparative PBC analysis between the 2 chemotherapy arms of the randomized CR induction trial. The PBC study patients were representative of the entire group of trial patients and, as such, experienced a significantly higher CR rate when allocated to the HDS arm.¹⁵ Upon assessing whether the CR induction results correlated positively with PBC scores, we found that median PBC values were significantly higher and that more PBC_{high} patients were in CR after 1 course of HDS, rather than ICE, chemotherapy ($P = .04$). This seemed to be related to a more rapid and profound LAIP⁺ cell depletion induced by high-dose cytarabine.

A weakness of this study was the lack of LAIP reassessment in BM samples examined at the response evaluation and subsequent MRD analysis. These tests were not planned in this study but should be performed in future investigations. The exclusion of patients lacking a suitable LAIP profile from the PBC study was unavoidable, as in other studies, whereas the inclusion of only 31% of 574 total trial patients did not preclude the collection of significant PBC-based

clinico-prognostic data according to study arm and AML risk subset among comparable patient series.

The PBC approach is simple and minimally invasive, providing an absolute functional quantification of leukemic burden reduction that is not affected by some variables (ie, overall cellularity, dilution by PB) expected with BM assessment. It allows the early identification of high-risk patients who would potentially benefit from intensification, as demonstrated by the improved outcome provided by HDS induction in the PBC-low subset.

We surmise that an early PBC analysis can contribute to a significant improvement in risk classification, because PBC_{low} patients are actually moved to the high-risk class, thereby adding relevant information to optimize induction therapy in the setting of intervention trials exploring new agents and/or compare established therapeutic options.

This powerful and early prognostic indicator might allow personalization of the therapeutic strategy for AML patients from the very first days of the induction course. In this regard, we are in the process of launching a multicenter trial (Eudract number 2019-003936-21) within the Gruppo Italiano Malattie EMatologiche dell'Adulto cooperative group, in which induction treatment is largely based on results of PBC. In fact, as soon as PBC data predict poor response during standard induction, the patient will be switched to intensified induction with high-dose cytarabine with the aim of increase the proportion of those reaching CR, as well as reducing the toxicity associated with the greater number of courses of treatment needed to achieve CR. Conversely, for patients in whom PBC data predict a good response, standard induction therapy is continued, thus avoiding the extra toxicity associated with generalized upfront use of intensification. Because the therapeutic scenario in AML is rapidly evolving, we believe that this model,

which is able to provide an early assessment of chemosensitivity, might be useful to rationalize the introduction of novel targeted agents that are emerging as effective treatment modalities.³³⁻³⁵

Acknowledgments

This work was supported by grants from Ministero della Salute (project title "Peripheral blast clearance analysis during induction treatment in patients with acute myeloid leukemia," Bando ricerca finalizzata 2013, project code GR-2013-02358238) (F.M.), Istituto Toscano Tumori (project code CUP B16D14001140002) (A.B.), and Legato Zottola.

Authorship

Contribution: G.G. and F.M. designed and performed research, analyzed and interpreted the data, and wrote the manuscript; T.I., I.C., F.M., D.F., E.A., and A.M.S. performed research and collected data; C.P. and A.M. analyzed and interpreted data and performed statistical analyses; S.B., M.I.B., D.G., and G.F. performed flow cytometric analysis; A.R. and A.B. interpreted data and critically reviewed the manuscript; and R.B. analyzed and interpreted data and wrote the manuscript.

Conflict-of-interest disclosure: The authors declare no competing financial interests.

ORCID profiles: F.M., 0000-0003-4810-6501; A.R., 0000-0002-3739-7502.

Correspondence: Francesco Mannelli, SOD Ematologia, Centro Ricerca e Innovazione Malattie Mieloproliferative, Università di Firenze, AOU Careggi, Largo Brambilla 3, 50134 Florence, Italy; e-mail: francesco.mannelli@unifi.it.

References

1. Döhner H, Estey EH, Amadori S, et al; European LeukemiaNet. Diagnosis and management of acute myeloid leukemia in adults: recommendations from an international expert panel, on behalf of the European LeukemiaNet. *Blood*. 2010;115(3):453-474.
2. Döhner H, Estey E, Grimwade D, et al. Diagnosis and management of AML in adults: 2017 ELN recommendations from an international expert panel. *Blood*. 2017;129(4):424-447.
3. Röllig C, Bornhäuser M, Thiede C, et al. Long-term prognosis of acute myeloid leukemia according to the new genetic risk classification of the European LeukemiaNet recommendations: evaluation of the proposed reporting system. *J Clin Oncol*. 2011;29(20):2758-2765.
4. Mrózek K, Marcucci G, Nicolet D, et al. Prognostic significance of the European LeukemiaNet standardized system for reporting cytogenetic and molecular alterations in adults with acute myeloid leukemia. *J Clin Oncol*. 2012;30(36):4515-4523.
5. San Miguel JF, Martínez A, Macedo A, et al. Immunophenotyping investigation of minimal residual disease is a useful approach for predicting relapse in acute myeloid leukemia patients. *Blood*. 1997;90(6):2465-2470.
6. Venditti A, Buccisano F, Del Poeta G, et al. Level of minimal residual disease after consolidation therapy predicts outcome in acute myeloid leukemia. *Blood*. 2000;96(12):3948-3952.
7. Schuurhuis GJ, Heuser M, Freeman S, et al. Minimal/measurable residual disease in AML: a consensus document from the European LeukemiaNet MRD Working Party. *Blood*. 2018;131(12):1275-1291.
8. Kern W, Danhauser-Riedl S, Räte R, et al. Detection of minimal residual disease in unselected patients with acute myeloid leukemia using multiparameter flow cytometry for definition of leukemia-associated immunophenotypes and determination of their frequencies in normal bone marrow. *Haematologica*. 2003;88(6):646-653.
9. Elliott MA, Litzow MR, Letendre LL, et al. Early peripheral blood blast clearance during induction chemotherapy for acute myeloid leukemia predicts superior relapse-free survival. *Blood*. 2007;110(13):4172-4174.
10. Arellano M, Pakkala S, Langston A, et al. Early clearance of peripheral blood blasts predicts response to induction chemotherapy in acute myeloid leukemia. *Cancer*. 2012;118(21):5278-5282.
11. Lacombe F, Arnoulet C, Maynadié M, et al. Early clearance of peripheral blasts measured by flow cytometry during the first week of AML induction therapy as a new independent prognostic factor: a GOELAMS study. *Leukemia*. 2009;23(2):350-357.

12. Yu C, Kong QL, Zhang YX, et al. Clinical significance of day 5 peripheral blast clearance rate in the evaluation of early treatment response and prognosis of patients with acute myeloid leukemia. *J Hematol Oncol*. 2015;8(1):48.
13. Gianfaldoni G, Mannelli F, Baccini M, Antonioli E, Leoni F, Bosi A. Clearance of leukaemic blasts from peripheral blood during standard induction treatment predicts the bone marrow response in acute myeloid leukaemia: a pilot study. *Br J Haematol*. 2006;134(1):54-57.
14. Gianfaldoni G, Mannelli F, Bencini S, Leoni F, Baldini S, Bosi A. Peripheral blood blast clearance during induction therapy in acute myeloid leukemia. *Blood*. 2008;111(3):1746-1747.
15. Bassan R, Intermeoli T, Masciulli A, et al. Randomized trial comparing standard vs sequential high-dose chemotherapy for inducing early CR in adult AML. *Blood Adv*. 2019;3(7):1103-1117.
16. Vardiman JW, Thiele J, Arber DA, et al. The 2008 revision of the World Health Organization (WHO) classification of myeloid neoplasms and acute leukemia: rationale and important changes. *Blood*. 2009;114(5):937-951.
17. Grimwade D, Hills RK, Moorman AV, et al; National Cancer Research Institute Adult Leukaemia Working Group. Refinement of cytogenetic classification in acute myeloid leukemia: determination of prognostic significance of rare recurring chromosomal abnormalities among 5876 younger adult patients treated in the United Kingdom Medical Research Council trials. *Blood*. 2010;116(3):354-365.
18. Falini B, Mecucci C, Tiacci E, et al; GIMEMA Acute Leukemia Working Party. Cytoplasmic nucleophosmin in acute myelogenous leukemia with a normal karyotype. *N Engl J Med*. 2005;352(3):254-266.
19. Noguera NI, Ammatuna E, Zangrilli D, et al. Simultaneous detection of NPM1 and FLT3-ITD mutations by capillary electrophoresis in acute myeloid leukemia [published correction appears in *Leukemia*. 2007;21(5):1134]. *Leukemia*. 2005;19(8):1479-1482.
20. Kottaridis PD, Gale RE, Frew ME, et al. The presence of a FLT3 internal tandem duplication in patients with acute myeloid leukemia (AML) adds important prognostic information to cytogenetic risk group and response to the first cycle of chemotherapy: analysis of 854 patients from the United Kingdom Medical Research Council AML 10 and 12 trials. *Blood*. 2001;98(6):1752-1759.
21. Pabst T, Mueller BU, Zhang P, et al. Dominant-negative mutations of CEBPA, encoding CCAAT/enhancer binding protein- α (C/EBP α), in acute myeloid leukemia. *Nat Genet*. 2001;27(3):263-270.
22. Oлару D, Campos L, Flandrin P, et al. Multiparametric analysis of normal and postchemotherapy bone marrow: implication for the detection of leukemia-associated immunophenotypes. *Cytometry B Clin Cytom*. 2008;74(1):17-24.
23. Al-Mawali A, Gillis D, Hissaria P, Lewis I. Incidence, sensitivity, and specificity of leukemia-associated phenotypes in acute myeloid leukemia using specific five-color multiparameter flow cytometry. *Am J Clin Pathol*. 2008;129(6):934-945.
24. Cheson BD, Bennett JM, Kopecky KJ, et al; International Working Group for Diagnosis, Standardization of Response Criteria, Treatment Outcomes, and Reporting Standards for Therapeutic Trials in Acute Myeloid Leukemia. Revised recommendations of the International Working Group for Diagnosis, Standardization of Response Criteria, Treatment Outcomes, and Reporting Standards for Therapeutic Trials in Acute Myeloid Leukemia [published correction appears in *J Clin Oncol*. 2004;22(3):576]. *J Clin Oncol*. 2003;21(24):4642-4649.
25. Castaigne S, Chevret S, Archimbaud E, et al. Randomized comparison of double induction and timed-sequential induction to a "3 + 7" induction in adults with AML: long-term analysis of the Acute Leukemia French Association (ALFA) 9000 study. *Blood*. 2004;104(8):2467-2474.
26. Burnett AK, Russell NH, Hills RK, et al. Optimization of chemotherapy for younger patients with acute myeloid leukemia: results of the medical research council AML15 trial. *J Clin Oncol*. 2013;31(27):3360-3368.
27. Willemze R, Suci S, Meloni G, et al. High-dose cytarabine in induction treatment improves the outcome of adult patients younger than age 46 years with acute myeloid leukemia: results of the EORTC-GIMEMA AML-12 trial. *J Clin Oncol*. 2014;32(3):219-228.
28. Pullarkat V, Aldoss I. Prognostic and therapeutic implications of early treatment response assessment in acute myeloid leukemia. *Crit Rev Oncol Hematol*. 2015;95(1):38-45.
29. Gianfaldoni G, Mannelli F, Ponziani V, et al. Early reduction of WT1 transcripts during induction chemotherapy predicts for longer disease free and overall survival in acute myeloid leukemia. *Haematologica*. 2010;95(5):833-836.
30. van Rhenen A, Moshaver B, Kelder A, et al. Aberrant marker expression patterns on the CD34+CD38- stem cell compartment in acute myeloid leukemia allows to distinguish the malignant from the normal stem cell compartment both at diagnosis and in remission. *Leukemia*. 2007;21(8):1700-1707.
31. Gjertsen BT, Tislevoll BS, Fagerholt OH, Hellesøy M. Early response evaluation in AML using mass cytometry. *HemaSphere*. 2019;3:3-5.
32. Maurillo L, Buccisano F, Del Principe ML, et al. Toward optimization of postremission therapy for residual disease-positive patients with acute myeloid leukemia. *J Clin Oncol*. 2008;26(30):4944-4951.
33. Braess J, Wegendt C, Jahns-Streubel G, et al. Successful modulation of high-dose cytosine arabinoside metabolism in acute myeloid leukaemia by haematopoietic growth factors: no effect of ribonucleotide reductase inhibitors fludarabine and gemcitabine. *Br J Haematol*. 2000;109(2):388-395.
34. Schneider C, Oellerich T, Baldauf HM, et al. SAMHD1 is a biomarker for cytarabine response and a therapeutic target in acute myeloid leukemia. *Nat Med*. 2017;23(2):250-255.
35. Guerra VA, DiNardo C, Konopleva M. Venetoclax-based therapies for acute myeloid leukemia. *Best Pract Res Clin Haematol*. 2019;32(2):145-153.