

SCIENTIFIC REPORTS



OPEN

Rare Pathogenic Variants Predispose to Hepatocellular Carcinoma in Nonalcoholic Fatty Liver Disease

Serena Pelusi^{1,2,16}, Guido Baselli¹, Alessandro Pietrelli², Paola Dongiovanni², Benedetta Donati¹, Misti Vanette McCain³, Marica Meroni¹, Anna Ludovica Fracanzani^{1,2}, Renato Romagnoli⁴, Salvatore Petta⁵, Antonio Grieco⁶, Luca Miele⁶, Giorgio Soardo⁷, Elisabetta Bugianesi⁸, Silvia Fargion^{1,2}, Alessio Aghemo⁹, Roberta D'Ambrosio¹⁰, Chao Xing¹¹, Stefano Romeo^{12,13}, Raffaele De Francesco¹⁴, Helen Louise Reeves^{3,15} & Luca Vittorio Carlo Valenti^{1,2,16}

Nonalcoholic fatty liver disease (NAFLD) is a rising cause of hepatocellular carcinoma (HCC). We examined whether inherited pathogenic variants in candidate genes ($n = 181$) were enriched in patients with NAFLD-HCC. To this end, we resequenced peripheral blood DNA of 142 NAFLD-HCC, 59 NAFLD with advanced fibrosis, and 50 controls, and considered 404 healthy individuals from 1000G. Pathogenic variants were defined according to ClinVar, likely pathogenic as rare variants predicted to alter protein activity. In NAFLD-HCC patients, we detected an enrichment in pathogenic ($p = 0.024$), and likely pathogenic variants ($p = 1.9 \times 10^{-6}$), particularly in *APOB* ($p = 0.047$). *APOB* variants were associated with lower circulating triglycerides and higher HDL cholesterol ($p < 0.01$). A genetic risk score predicted NAFLD-HCC (OR 4.96, 3.29–7.55; $p = 5.1 \times 10^{-16}$), outperforming the diagnostic accuracy of common genetic risk variants, and of clinical risk factors ($p < 0.05$). In conclusion, rare pathogenic variants in genes involved in liver disease and cancer predisposition are associated with NAFLD-HCC development.

¹Department of Pathophysiology and Transplantation, Università degli Studi di Milano, Fondazione IRCCS Ca' Granda Ospedale Maggiore Policlinico, Milan, Italy. ²Internal Medicine and Metabolic Diseases, Fondazione IRCCS Ca' Granda Ospedale Maggiore Policlinico, Milan, Italy. ³Northern Institute for Cancer Research, The Medical School, Newcastle University, Newcastle upon Tyne, UK. ⁴Department of Surgical Sciences, Liver Transplantation Center, University of Turin, Turin, Italy. ⁵Section of Gastroenterology, DIBIMIS, University of Palermo, 90127, Palermo, Italy. ⁶Internal Medicine and Gastroenterology Area, Fondazione Policlinico Universitario A. Gemelli, Catholic University of Rome, 00168, Rome, Italy. ⁷Clinic of Internal Medicine-Liver Unit, Department of Experimental and Clinical Medical Sciences, University of Udine, Udine, Italy. ⁸Division of Gastroenterology, Department of Medical Sciences, University of Torino, Torino, Italy. ⁹Division of Gastroenterology and Hepatology Unit, Humanitas Research Hospital and Humanitas University, Rozzano (MI), Italy. ¹⁰A.M. e A. Migliavacca" Center for the Study of Liver Disease, Division of Gastroenterology and Hepatology, Fondazione IRCCS Ca' Granda - Ospedale Maggiore Policlinico, Università degli Studi di Milano, Milano, Italy. ¹¹McDermott Center for Human Growth and Development, University of Texas Southwestern Medical Center, Dallas, TX, USA. ¹²Sahlgrenska Center for Cardiovascular and Metabolic Research, Wallenberg Laboratory, Cardiology Department, University of Gothenburg, Gothenburg, Sweden. ¹³Clinical Nutrition Unit, Department of Medical and Surgical Sciences, Magna Graecia University, Catanzaro, Italy. ¹⁴Istituto Nazionale di Genetica Molecolare (INGM), Romeo ed Enrica Invernizzi, Bioinformatic group, Milan, Italy. ¹⁵Newcastle upon Tyne NHS Foundation Trust, Newcastle upon Tyne, UK. ¹⁶Translational Medicine, Department of Transfusion Medicine and Hepatology, Milan, Italy. Serena Pelusi and Guido Baselli contributed equally. Correspondence and requests for materials should be addressed to L.V.C.V. (email: luca.valenti@unimi.it)

Received: 5 September 2018

Accepted: 23 January 2019

Published online: 06 March 2019

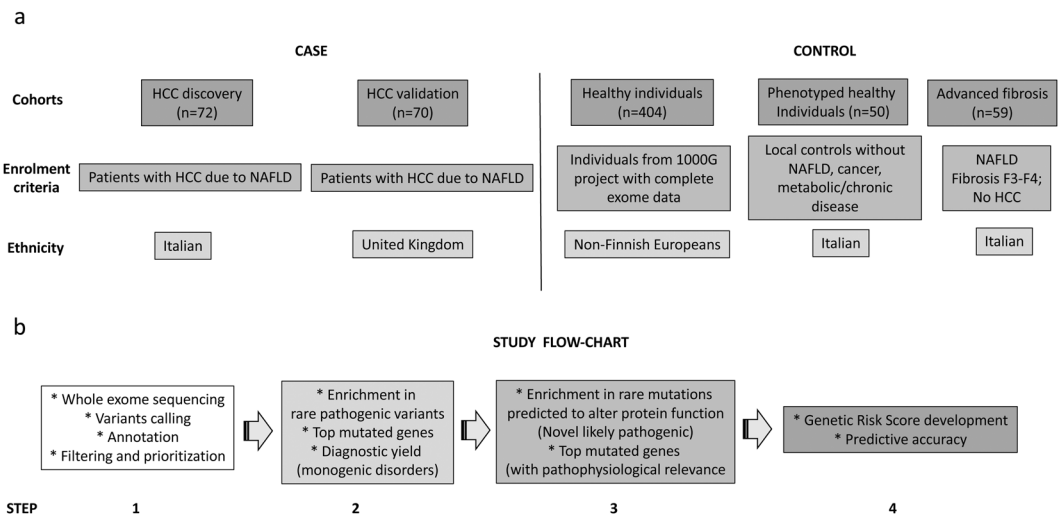


Figure 1. Study design. (a) Study cohorts composition and enrolment criteria. (b) Study flow-chart. NAFLD: non-alcoholic fatty liver disease. HCC: hepatocellular carcinoma.

Nonalcoholic fatty liver disease (NAFLD) is now the leading cause of hepatic damage worldwide¹. In a minority of affected individuals, NAFLD can progress to cirrhosis and hepatocellular carcinoma (NAFLD-HCC), which is emerging as a leading cause of liver-related mortality^{2–4}.

Aging, male sex, presence of type 2 diabetes (T2D) and cirrhosis are clinical risk factors for NAFLD-HCC². However, due to the high prevalence of NAFLD in the general population, the low incidence of NAFLD-HCC, but the frequent occurrence of this kind of cancer in non-cirrhotic individuals, and the competition with metabolic comorbidities as a cause of death, mass screening of NAFLD-HCC is currently unfeasible. As a result, most cancers are diagnosed at advanced stages, leading to a dismal prognosis for those affected^{5,6}. Therefore, identification of new biomarkers able to improve NAFLD-HCC risk stratification are of paramount clinical importance for the development of targeted and cost-effective surveillance programs.

Heritability is involved in HCC predisposition⁷, and NAFLD has a strong genetic component⁸, as does its progression to advanced disease⁹. A common genetic variation encoding for the I148M variant in *PNPLA3*, the major inherited determinant of hepatic fat accumulation, predisposes to NAFLD-HCC independently of the effect of fibrosis^{10,11}. We have also showed that other common genetic variants influencing hepatic fat accumulation, namely those in *TM6SF2* and *MBOAT7*, may improve the ability to discriminate NAFLD patients at risk of HCC¹¹. However, possibly because of the still large fraction of missing heritability, carriage of these variants was not specific enough to identify patients at risk of NAFLD-HCC to be implemented in clinical practice^{12,13}.

Part of the missing heritability in NAFLD may be accounted for by carriage of rare genetic variants with a large effect size. Indeed, rare germline genetic variants in *TERT* and other loci are associated with occurrence of NAFLD-cirrhosis and familial HCC^{14,15}, supporting the hypothesis that rare genetic variants contribute to NAFLD-HCC risk and phenotype variability. However, a systematic evaluation of candidate genes in a large number of affected individuals has not been performed so far.

Taking advantage of next generation whole exome sequencing (WES), the aim of this study was therefore to examine whether variants in candidate genes involved in liver disease and cancer predisposition, that are either pathogenic (that is already linked to a pathological phenotype) or rare and predicted with stringent criteria to alter protein activity (likely pathogenic), are enriched in NAFLD-HCC as compared to healthy individuals and patients with advanced NAFLD. The main outcome was the overall enrichment in pathogenic/likely pathogenic variants, hypothesizing that their identification might be useful in discriminating disease risk and ultimately inform a stratified approach to HCC screening or surveillance in the ever-increasing numbers of patients with NAFLD.

Such an approach enabled us to evaluate a large panel of genes, which would have been not possible by using targeted panels, while restricting at the same time the analysis to those for which there is already solid evidence of a causal relationship with liver disease/cancer.

Methods

Study cohorts and design. The evaluated cohorts and study flow chart are presented in Fig. 1.

The discovery NAFLD-HCC cohort included 72 Italian patients and 70 UK patients, who were enrolled between January 2010 and 2016. All were of Caucasian ancestry.

The diagnosis of HCC was based on the EASL-EORTC clinical practice guidelines for management of hepatocellular carcinoma¹⁶. Secondary causes of steatosis were excluded on history, including alcohol abuse (≥ 30 g/day in M/F) and the use of drugs known to precipitate steatosis. Viral and autoimmune hepatitis, hereditary hemochromatosis, Wilson's disease, overt alpha-1-antitrypsin deficiency and present or previous infection with HBV (HBsAg) and HCV were ruled out using standard clinical and laboratory evaluation as well as liver biopsy features.

	HCC discovery (n = 72)	HCC replication (n = 70)	p value (discovery vs. replication)	Advanced fibrosis (n = 59)	Healthy individuals (n = 50)	p value (HCC vs. no-HCC)
Age, years	68 ± 9	74 ± 7	<0.0001	59 ± 10	49 ± 12	<0.0001
Sex, F	17 (24%)	10 (20%)	0.15	21 (36%)	17 (34%)	0.048
BMI, Kg/m ²	29.8 ± 5.8 (n = 58)	32.7 ± 8.2 (n = 45)	0.12	31.3 ± 4.9 (n = 44)	24.6 ± 2.5 (n = 50)	<0.0001
Type 2 Diabetes, yes	43 (61%)	36 (62%)	0.72	33 (56%)	0	<0.0001
PNPLA3 I148M						
I/I	18 (25%)	14 (20%)	0.2	13 (22%)	28 (56%)	0.13
I/M	30 (42%)	32 (46%)		26 (44%)	21 (42%)	
M/M	24 (33%)	24 (34%)		20 (34%)	1 (2%)	
TM6SF2, E167K						
E/E	57 (79%)	53 (76%)	0.84	47 (80%)	38 (76%)	0.59
E/K	14 (20%)	14 (20%)		12 (20%)	12 (24%)	
K/K	1 (1%)	3 (4%)		0	0	
MBOAT7, rs641738 C > T						
C/C	18 (25%)	24 (34%)	0.032	20 (34%)	19 (38%)	0.32
C/T	31 (43%)	38 (54%)		26 (44%)	23 (46%)	
T/T	23 (32%)	8 (12%)		13 (22%)	8 (16%)	

Table 1. Clinical and genetic features of 251 individuals who underwent whole exome sequencing for evaluation of germline variants in candidate genes involved in liver disease and cancer predisposition. BMI: body mass index; HCC hepatocellular carcinoma; PNPLA3: patatin-like phospholipase domain-containing protein 3; TM6SF2: transmembrane 6 superfamily member 2; MBOAT7: membrane bound O-acyltransferase domain containing 7; GSKR: glucokinase regulatory protein. Data were compared by univariate generalized linear models.

Fifty-nine patients with advanced fibrosis due to NAFLD (histological stage F3–F4 or clinically overt cirrhosis) recruited at the Italian institutions during the same period were used as controls. A local ethnically matched control group of comparable sex distribution including 50 Italian healthy blood donors without clinical and biochemical evidences of liver disease, NAFLD, metabolic abnormalities and no alcohol abuse¹⁴, and the 404 non-Finnish European (NFE) healthy individuals included in the 1000 Genomes database (<http://www.internationalgenome.org>), for whom complete exome data were publicly available were used as further controls (including 91 Italian and 107 UK individuals).

The study protocol conformed to the ethical guidelines of the 1975 Declaration of Helsinki, was approved by the Ethical committee of the involved Institutions (Fondazione IRCCS Ca' Granda Policlinico and University of Newcastle upon Tyne), and was performed according to the recommendations of the hospitals involved. Informed consent was obtained from each patient or responsible guardian.

The clinical features of individuals included in the study are presented in Table 1.

There were four sequential steps to the study (Fig. 1). The first step consisted in whole exome sequencing, variant analysis, identification and prioritization. The second addressed the possibility of enrichment in already known pathogenic variants in candidate genes in NAFLD-HCC cases vs. controls, and identified the most mutated genes and the diagnostic yield for Mendelian monogenic disorders. The third step encompassed the identification of rare variants predicted to alter protein function in the same candidate genes that might be associated with disease predisposition. Finally, a genetic risk score (GRS) for NAFLD-HCC was developed and assessed for its diagnostic accuracy.

Whole exome sequencing, variants identification, annotation and prioritization. The WES sequencing and analytical pipeline is presented in Supplementary Fig. 1.

Briefly, for the 258 samples included in the EPIDEMIC-NAFLD cohort, which were resequenced for this project (Exome sequencing for the Identification of Inherited Variants Involved in HCC development in NAFLD), DNA was extracted from peripheral blood mononuclear cells, and quantified by a Qubit 2.0 analyzer using the Qubit dsDNA BR Assay Kit (Thermo-Fisher Scientific, Waltham, MA, USA). Samples purity was evaluated using a Nanodrop 1000 spectrophotometer (Thermo-Fisher, Waltham, MA, USA) and integrity was assessed by gel electrophoresis.

DNA libraries were enriched for exome sequencing by the SureSelect Human All Exon v5 kit (Agilent, Cernusco sul Naviglio, Milan, Italy). Sequencing was subsequently performed on the HiSeq4000 platform (Illumina, city). Raw reads quality control was performed using FastQC software (Brabraham bioinformatics, Cambridge, UK). Reads mapping on human GRCh37 genome was performed using MEM algorithm of Burrows Wheeler Aligner (BWA) version 0.7.10¹⁷. Reads with low quality alignments and duplicate reads were filtered out using Samtools¹⁸ to generate high quality bam files. Mapping quality control was performed using Picard-tools (<http://broadinstitute.github.io/picard>) and Bedtools¹⁹. Sequencing mean depth was of 73x, and no samples exhibit a mean depth lower than 50x (Supplementary Fig. 2 panels a,b). Sequencing resulted in a good target coverage: almost all samples exhibited more than 90% coverage of the target at 20x depth. Importantly, sequencing

statistics in terms of input reads, high quality mapped reads, mean depth and coverage, did not show variations among the different cohorts (Supplementary Fig. 2 panel c).

Variant calling was performed following GATK best practices²⁰. Briefly, indel local realignment, base quality recalibration and variants calling (Haplotypecaller algorithm) were performed using GATK version 3.3.0²¹. GVCF joint and variants filtering using variant quality score recalibration (VQSR) method were performed. Variants quality score log-odds (VQSLOD) above 99% tranche were considered true positives. To avoid the possibility of calling somatic variants due to the presence of circulating tumor DNA, variants present in <20% of total reads were discarded. Indel left normalization was performed using BCFtools software²². Variants annotation was performed using both variant effect predictor (VEP)²³ and ANNOVAR²⁴ tools.

Variants filtering was performed using VCFtools²⁵ to exclude variants over VQSLOD threshold and variants which were called in less than 95% of samples. All intronic and synonymous variants according to VEP prediction were excluded from the analyses. Multidimensional scaling of identity-by-state distances analysis was conducted on EPIDEMIC study samples exploiting SNPRelate R Bioconductor package²⁶. As shown in Supplementary Fig. 3, in the EPIDEMIC project samples, the first component of variability was explained by the geographic origin of the patients (Italy vs. UK). Whole exome sequencing reads from 1000 genomes project phase 3 (1000 G)²⁷ non-Finnish Europeans (NFE; 404 samples) were processed using the same pipeline described for the EPIDEMIC samples.

Candidate genes selection and classification of variants. Candidate genes were selected according to the literature updated at January 2016, among those whose variants were robustly linked with cancer predisposition syndromes²⁸, or mutated in HCC²⁹, or predisposing to hereditary liver diseases³⁰, or involved in predisposition to telomeres diseases³¹, or in iron and lipid metabolism and NAFLD³². The complete list of 181 candidate genes and their classification is presented in the Supplementary File, sheet “Candidate genes”.

For Step 2 (enrichment in rare pathogenic variants in candidate genes and diagnostic rate), variants reported as “likely pathogenic” in the Clinvar (<https://www.ncbi.nlm.nih.gov>) database³³, located in candidate genes, and with a minor allele frequency (MAF) <0.05 in 1000 G NFE, ExAC databases and in local healthy controls, were selected.

For Step 3 (enrichment in rare variants predicted to alter protein function, novel likely pathogenic), we used stringent criteria, that is selection of variants determining an alteration of protein sequence (missense, nonsense, splice sites), located in candidate genes, and with a MAF <0.001 in ExAC NFE, MAF <0.005 in the EPIDEMIC project samples, and a CADD Phred >10 (Top 10% of damaging variants)³⁴.

Statistical analysis. For descriptive statistics, continuous variables are shown as mean and standard deviation or median and interquartile range for highly skewed biological variables. Variables with skewed distributions were logarithmically or inverse normally transformed before analyses. All genetic analyses were calculated by using an additive model.

Fisher’s Exact test, multivariate or univariate generalized linear models were used when appropriate. Models were adjusted for clinically relevant covariates, as specified in the Results section. Gene enrichment in rare variants was assessed using the cohort allelic sum test (CAST) approach^{35,36}. The association between the frequency of variants in genes significantly enriched in NAFLD-HCC vs. healthy controls was next validated against the cumulative frequency observed in NFE individuals included in the ExAC project (n = 33370) by Fisher’s exact test, adjusted for the number of comparisons. A NAFLD-HCC risk score was developed as previously described^{11,37}. The GRS for HCC was calculated by regressing the number of pathogenic/likely pathogenic variant collapsed at the level of single candidate genes and common genetic risk factors for in *PNPLA3*, *TM6SF2* and *MBOAT7* against the presence of HCC. To internally validate the GRS, β coefficients were adjusted using the Jack-knife resampling method. The diagnostic accuracy of different models for NAFLD-HCC prediction was compared by two-sided Venkatraman test³⁸. The population attributable risk (PAR) of GRS for NAFLD-HCC was estimated as previously described for case-control studies³⁹.

GRS gene functions were explored by pathway enrichment analysis exploiting Ingenuity Pathway Analysis software (Qiagen, Valencia, USA) with default parameters.

Protein features were obtained from Uniprot database (www.uniprot.org) coding variants of interest genes were mapped into reported protein domains and regions. Variants enrichment in protein domains was evaluated by CAST Burden test approach. Lollipop diagrams were generated using Mutation Mapper software (http://www.cbioportal.org/mutation_mapper.jsp).

Statistical analyses were carried out using R statistical analysis software version 3.3.2 (<http://www.R-project.org/>). P values < 0.05 were considered statistically significant.

Results

Pathogenic variants in candidate genes are enriched in NAFLD-HCC. We first examined pathogenic variants in HCC cases and controls. The list of pathogenic variants identified in candidate genes is presented in the Supplementary File, sheet “Pathogenic”. We identified 68 variants previously linked to pathological phenotypes, which met the inclusion criteria. There was an enrichment in the number of pathogenic variants per individual in candidate genes in NAFLD-HCC patients, as compared to patients with advanced fibrosis, healthy individuals and the 1000 G cohort (Fig. 2a and Supplementary Table 2; OR 1.4, 95% c.i. 1.1-infinite, p = 0.024).

A comutation plot reporting genes interested by pathogenic variants in the newly characterized EPIDEMIC cohorts (excluding 1000 G), as well as common variants previously associated with NAFLD-HCC is reported in Fig. 3. Among the single genes, we found a significant enrichment of variants in the *APOB* gene predisposing to familial hypobetalipoproteinemia (two variants in cases and none in controls, p = 0.047). Furthermore, we

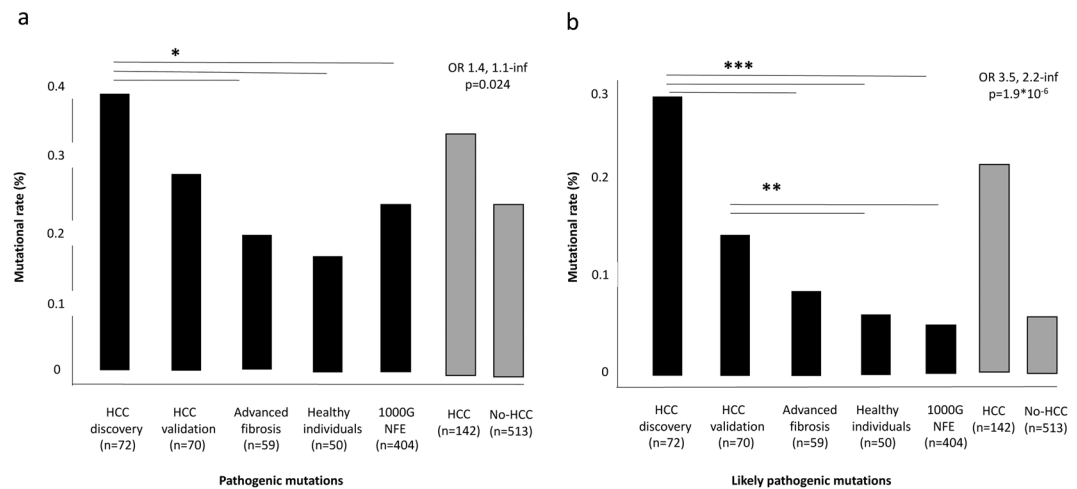


Figure 2. Enrichment in pathogenic variants in patients with NAFLD-HCC. **(a)** Frequency of pathogenic variants (mutational rate %: sum of mutated/total alleles) in NAFLD-HCC cases vs. controls. **(b)** Frequency of likely pathogenic variants (rare variants with high likelihood of altering protein activity) in NAFLD-HCC cases vs. controls. * $p < 0.05$; ** $p < 0.01$; *** $p < 0.005$ by Fisher's exact test.

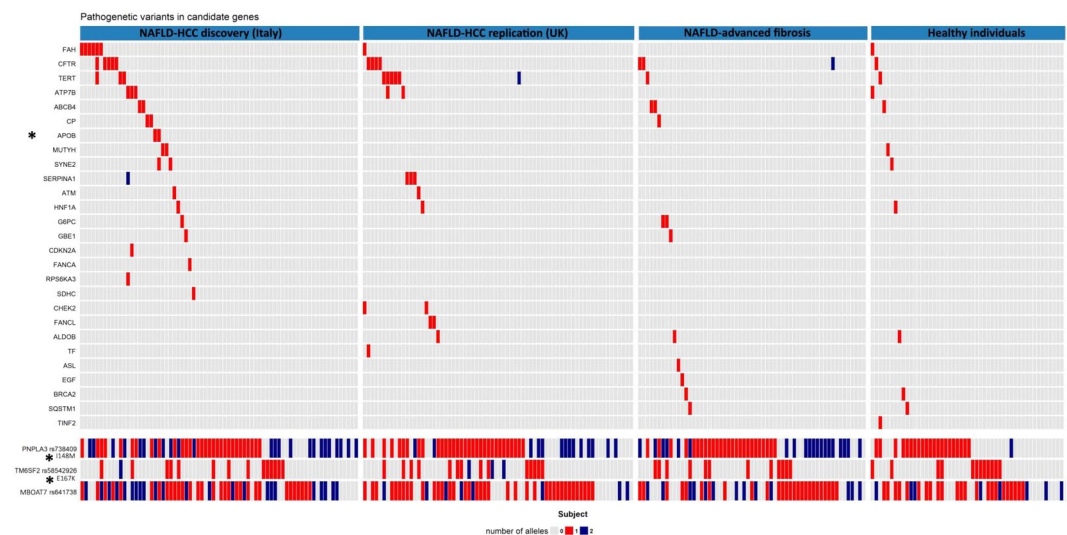


Figure 3. Genes enriched in pathogenic variants. Comutation plot showing the distribution of rare pathogenic variants (upper panel), as well as of common genetic variants (bottom panel) predisposing to hepatic fat accumulation and NAFLD-HCC in the 251 individuals of the EPIDEMIC project. Genes significantly enriched in variants in cases vs. controls are marked by and asterisk (*by Fisher's exact test). Gene abbreviations are shown in Supplementary Material.

confirmed a strong association with the common *PNPLA3* I148M variant (OR 2.49, 95% c.i. 1.89–3.30), and detected an association with the *TM6SF2* E167K variant (OR 1.72, 95% c.i. 1.10–1.24) regulating hepatic lipid compartmentalization. The rs641738 *MBOAT7* variant was associated with NAFLD-HCC in the discovery (OR 1.49, 95% c.i. 1.03–2.15, $p = 0.031$), but not in the validation cohort (OR 0.81, 95% c.i. 0.56–1.19, $p = \text{NS}$).

After resequencing of candidate genes, according to ClinVar, 19/142 (13.4%) NAFLD-HCC patients vs. 3/59 (5.1%) NAFLD with advanced fibrosis, 3/50 (6.0%) local controls, and 28/404 (6.9%) NFE individuals from 1000 G had a genetic picture consistent with a diagnosis of Mendelian disease predisposing to advanced liver disease or cancer (HCC: 19/142, 13.4%, vs. no-HCC: 34/513, 4.7%; OR 3.15, 95% c.i. 1.57–5.93, $p = 0.0005$).

Role of rare variants likely determining an alteration in protein activity. The list of rare variants in candidate genes predicted to alter protein activity (likely pathogenic variants) is provided in the Supplementary File, sheet “likely pathogenic”. We observed an enrichment in rare pathogenic variants in NAFLD-HCC cases vs. controls (Fig. 2b and Supplementary Table 2; OR 3.5 95% c.i. 2.2-inf, $p = 1.9 \times 10^{-6}$). Genes significantly enriched in likely pathogenic variants in NAFLD-HCC cohorts are presented in Table 2. In the overall series or national cohorts, we found a significant enrichment in variants in Telomerase complex genes (*RTEL1*, *TERF2*), DNA and

Gene	NAFLD-HCC (n = 72)	Controls (n = 513)	OR	(95% c.i.)	p value*	% carriers NAFLD-HCC	ExAC	OR (95% c.i.)	Adjusted p value**
Discovery cohort (Italy)						Replication vs. ExAC NFE			
RTEL1	9	9	7.9	2.7–23.5	7.8*10 ⁻⁵	12.5	2.1	5.9 (2.6–11.8)	0.0003
SQSTM1	3	1	22.0	1.7–1161	0.0065	4.2	0.7	5.8 (1.2–18.0)	0.050
TSC2	6	10	4.6	1.3–14.4	0.0083	8.3	3.1	2.7 (0.9–6.1)	0.064
APOB	11	31	2.8	1.2–6.1	0.012	15.3	4.6	3.3 (1.6–6.2)	0.005
TERF2	3	3	7.4	1–55.6	0.027	4.2	0.2	17.4 (3.4–55.0)	0.004
SMAD4	2	1	14.5	1–859	0.041	2.8	0.4	7.4 (0.9–28.3)	0.064
Validation cohort (UK)									
STK11	2	1	14.9	1–884	0.039	2.9	0.3	8.4 (1.0–32)	0.051
MBOAT7	2	1	14.9	1–884	0.039	2.9	0.6	4.5 (0.5–17.1)	0.076
NF2	3	4	5.7	1–34.2	0.041	4.3	0.3	12.1 (2.4–37.2)	0.009
RB1	4	8	3.8	1–14.7	0.0201	5.7	1.0	5.9 (1.6–16)	0.018
Overall									
RTEL	10	9	4.2	1.5–12	0.0026	7.0	2.1	3.3 (1.5–6.3)	0.006
RB1	7	8	3.3	1–10.5	0.026	4.9	1.0	5.1 (2.0–11)	0.003
TSC1	6	6	3.7	1–14.1	0.027	4.2	1.7	2.5 (0.9–5.6)	0.077
SMAD4	3	1	11.0	1–579	0.034	2.1	3.7	5.6 (1.1–17.2)	0.054
SQSTM1	3	1	11.0	1–579	0.034	2.1	0.7	3.0 (0.6–8.9)	0.086

Table 2. Candidate genes significantly enriched in rare variants determining an alteration of protein sequence predicted to alter its function (likely pathogenic mutations) in NAFLD-HCC patients vs. healthy individuals (left panel). Significant associations were replicated against NFE individuals included in the ExAC project (n = 33370). *Evaluated by Burden test. **Evaluated by Fisher's test adjusted for multiple comparisons. RTEL1: regulator of telomere elongation helicase 1, SQSTM1: sequestosome-1 (p62), TSC2: tuberous sclerosis complex 2, APOB: apolipoprotein B, TERF2: telomere repeat binding factor 2, SMAD4: SMAD (suppressor of mothers against decapentaplegic) family member 4, STK11: serine/threonine kinase 11 (LKB1), MBOAT7: membrane bound O-acyltransferase domain containing 7, NF2: neurofibromin 2, RB1: retinoblastoma 1. Control group was defined as n = 404 NFE individuals from 1000 G project, n = 59 NAFLD patients with advanced fibrosis/cirrhosis, n = 50 local healthy individuals.

oxidative damage response (*RB1*), and we also highlighted genes involved in regulation of cell growth and proliferation (*STK11*, *TSC1*, *TSC2*, *NF2*, *SMAD4*). Genes involved in regulation of hepatic lipid metabolism, including *APOB* and *MBOAT7* were also enriched in rare likely pathogenic variants, and we detected an enrichment in variants of *SQSTM1*. Most of the associations remained consistent when the cumulative frequency of variants in the candidate genes was compared to that observed in NFE individuals included in the ExAC database. A computation plot reporting genes significantly enriched in likely pathogenic variants in the EPIDEMIC cohorts is reported in Supplementary Fig. 4.

In order to check the efficacy of the criteria adopted (frequency and predicted impact) for the identification of likely pathogenic variants, we assessed whether variants in *APOB* (pathogenic/likely pathogenic), which are associated with a clear phenotype that can be assessed by common biochemical tests, influence circulating lipid levels. Results are shown in Supplementary Table 3. Supporting the validity of our selection algorithm, in patients for whom data were available carriage of *APOB* variants was associated with 46% higher HDL cholesterol and 44% lower triglycerides (p = 0.008 and p = 0.001, respectively), consistent with a hypobetalipoproteinemia phenotype.

All in all, these data suggest that rare genetic variants with a very high likelihood of impacting protein activity are associated with the predisposition to develop NAFLD-HCC.

Genetic risk score development and validation. To examine whether evaluation of common and rare germline genetic variants may be clinically helpful in the stratification of NAFLD-HCC risk, we developed a weighted GRS for this condition and tested its diagnostic accuracy. The GRS coefficients are shown in Supplementary Table 4. In the total cohort of 655 individuals, the GRS was associated with HCC risk (OR 435, 95% c.i. 111–1903; p < 2*10⁻¹⁶, OR 4.96, 95% c.i. 3.29–7.55; p = 5.1*10⁻¹⁶ for high vs. low GRS). The GRS had an AUROC of 0.74, 95% c.i. 0.69–0.79 for predicting NAFLD-HCC in the total cohort, as compared to 0.79, 95% c.i. 0.73–0.85 and to 0.69, 95% c.i. 0.62–0.75 in the discovery and validation cohorts, respectively (Fig. 4a). The diagnostic thresholds, sensitivity and specificity values are reported in Table S5. The best GRS threshold had a 61% sensitivity and 72% specificity to detect NAFLD-HCC.

The GRS improved the ability to discriminate NAFLD-HCC risk as compared to evaluation of the *PNPLA3* I148M variant alone and of a combination of the *PNPLA3* I148M and *TM6SF2* E167K variants (p < 2*10⁻¹⁶; Fig. 4b and Supplementary Table 5).

In the EPIDEMIC cohort with complete data (n = 251), the GRS was associated with NAFLD-HCC (OR 4.96, 95% c.i. 3.29–7.55; p = 5.1*10⁻¹⁶), independently of classical risk factors (OR 2.28, 95% c.i. 1.06–4.97, p = 0.04; Table 3). The addition of GRS to a model based on acquired risk factors modified the ability to discriminate NAFLD-HCC (p = 0.03 for comparison of AUC; shown in Fig. 4c). This was mainly due to a slight increase in

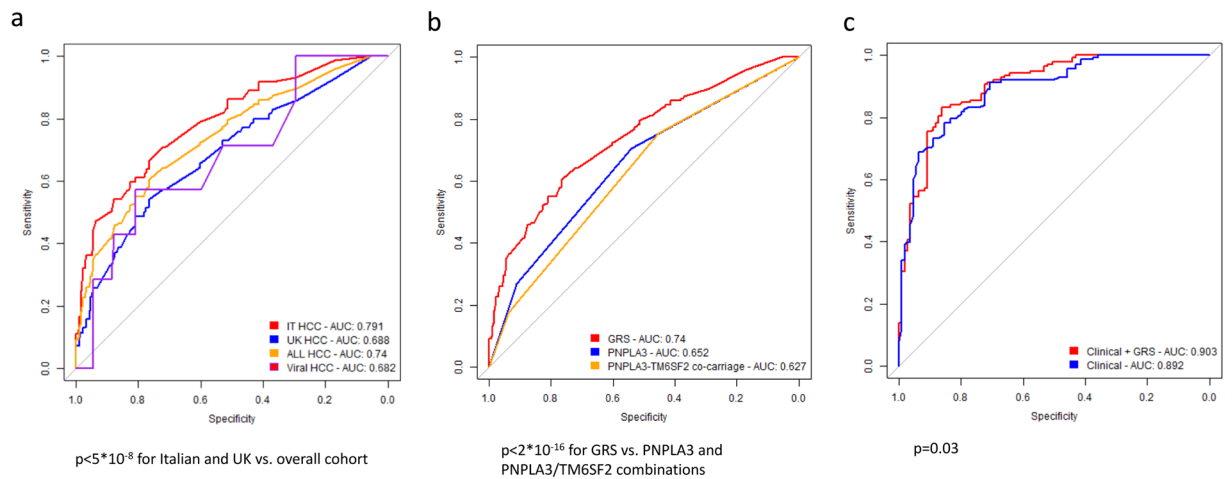


Figure 4. Genetic risk score. Diagnostic accuracy of the Genetic risk score (GRS) for NAFLD-HCC in the 655 individuals included in the study. **(a)** comparison of the diagnostic accuracy in the study cohorts; $p < 0.05$ for diagnostic accuracy in the overall vs. single cohorts. **(b)** Diagnostic accuracy of GRS vs. *PNPLA3* I148M variant alone and a combination of *PNPLA3* I148M and *TM6SF2* E167K variants in determining NAFLD HCC risk; $p < 2 \times 10^{-8}$ for alternative genetic scores vs. the overall GRS. **(c)** Additive value of adding GRS to a diagnostic model based on clinical risk factors, in determining NAFLD-HCC risk in the 251 individuals of the EPIDEMIC study; $p = 0.17$. Comparison of diagnostic accuracy was performed by two-sided Venkatraman test.

Risk factors	OR	95% c.i.	p value*
GRS, range	59.4	5.3–952	0.002
GRS, high	2.28	1.06–4.97	0.04
Sex, M	1.56	0.64–3.82	0.33
Age, years	1.17	1.12–1.24	4.4×10^{-10}
Type 2 diabetes, yes	1.58	0.67–3.67	0.29
Advanced fibrosis, yes	1.60	0.63–4.00	0.31

Table 3. Independent predictors of NAFLD-HCC in 251 individuals in the EPIDEMIC cohort. GRS: Genetic risk score; Range: OR for highest for lowest GRS value in the cohort; High: OR for $\text{GRS} > 0.22$ (median value). *Evaluated at generalized linear model considering covariates shown in the table.

sensitivity (83% v. 78%, Supplementary Table 6). In the EPIDEMIC cohort, the clinical risk score misclassified 46 patients (19%). Addition of GRS to risk prediction led to a net improvement in classification in 8 individuals (3% of the overall cohort, 17% of misclassified; $p = 0.004$).

The PAR of the overall panel of genetic variants considered in the GRS for the risk of NAFLD-HCC is presented in Supplementary Table 7. In the overall cohort, the genetic variants considered accounted for 48% (95% c.i. 38–59%) of NAFLD-HCC phenotype variability.

Characterization of specific variants. The localization of likely pathogenic variants in selected genes (*RETL1*, *APOB*, *SQSTM1*) in individuals with ($n = 142$) and without ($n = 513$) HCC is shown in Supplementary Fig. 5a–c. For *APOB*, the rate of truncating variants, determining a higher likelihood of severe impairment in protein function, was higher in HCC vs. non-HCC individuals ($p = 0.009$). Furthermore, variants in *SQSTM1* tended to localize in a protein region reported to interact with *NTRK1* ($p = \text{NS}$).

The summary output of Ingenuity pathway analysis of genes included in the GRS (which were mutated in NAFLD-HCC cases) is presented in Supplementary Table S8. As expected, there was a significant enrichment in pathways related to cancer, hepatocellular carcinoma, liver disease, lipid metabolism, and hereditary disorders. Interestingly, there was an over-representation of genes involved in FXR/RXR activation, and regulation of cell cycle at the G1/S checkpoint.

Discussion

NAFLD-HCC is an emerging complication of metabolic conditions such as obesity and T2D². Due to the very high prevalence of the population at risk, classic screening strategies are presently unfeasible. Therefore, novel noninvasive biomarkers are urgently needed to improve disease risk stratification. Indeed, although carriage of the common *PNPLA3* I148M variant is a strongly associated with NAFLD-HCC development, taken by itself it is not sufficiently accurate to stratify the risk of this condition¹².

Here we show that in patients with NAFLD-HCC, pathogenic and likely pathogenic variants in genes linked to liver disease and cancer predisposition are enriched as compared to healthy individuals. Furthermore, we have replicated this result in two independent cohorts.

Although further validation is required before target gene resequencing can be recommended in clinical practice, these findings have potential clinical implications. In the present cohort, resequencing of the candidate genes panel led to the detection of likely predisposing genetic conditions in a large fraction of patients presenting with NAFLD-HCC. This may also aid in the identification of family members for whom screening would be cost effective, or specific preventive treatments may be considered. Furthermore, evaluation of a comprehensive GRS, which takes into consideration rare variants, in individuals with NAFLD may allow a more accurate HCC risk stratification and the implementation of targeted surveillance. Indeed, the comprehensive GRS showed superior diagnostic accuracy as compared to the evaluation of common genetic risk factors, including the *PNPLA3* I148M variant alone¹², or a combination of *PNPLA3* I148M and *TM6SF2* E167K variants⁴⁰. Furthermore, the GRS improved patient stratification, when considered together with classical risk factors for NAFLD-HCC. The clinical utility of GRS assessment should however be tested in familial and prospective studies evaluating patients with NAFLD and other liver diseases.

Furthermore, the present findings may also have pathophysiological implications worthy of exploration. Firstly, although *PNPLA3* I148M is the major genetic determinant of NAFLD-HCC, no other rare loss-of-function mutations were identified in this gene among the affected patients. This would support the notion that the I148M acquires new functions able to trigger hepatic fat accumulation, alteration of retinol metabolism, and carcinogenesis^{41–43}. Secondly, consistently with previous data¹¹, other variants favoring hepatocellular fat retention were associated with NAFLD-HCC, including common and rare variants in *TM6SF2* and *MBOAT7* genes. Thirdly, variants in *APOB*, responsible for hypobetalipoproteinemia, were collectively observed in a high proportion of Italian patients (15%), and there was a significant enrichment in pathogenic and truncating mutations in this gene in the overall cohort of NAFLD-HCC patients. *APOB* genetic variants leading to the synthesis of a dysfunctional ApoB100 protein and to a consequent impairment in the export of lipids from hepatocytes within very low-density lipoproteins are responsible for the development of severe hepatic steatosis (hypobetalipoproteinemia, an autosomal dominant disease). At the same time, some *APOB* variants that lead to the alteration of the first portion of the protein result also in altered activity of ApoB48, the protein isoform expressed by enterocytes. This results in retention of chylomicrons, malabsorption of fat and liposoluble vitamins (retinol - vitamin A, vitamin E and vitamin D), known to play a protective role in liver disease progression, and possibly in the alteration of the intestinal barrier. Most importantly, individuals carrying *APOB* mutations had a circulating lipid profile consistent with hypobetalipoproteinemia, providing functional validation of the pathogenicity of the genetic mutations identified. Notably, in line with a causal role of hepatocellular lipid retention in promoting NAFLD-HCC, somatic mutations in *APOB* also frequently occur during hepatic carcinogenesis⁴⁴. The mechanism connecting *APOB* mutations with carcinogenesis is still not completely understood. Induction of hepatocellular lipid accumulation, oxidative stress, and the loss of a possible tumor suppressive activity of *APOB* are some of the hypothesis that have been raised^{45,46}. Therefore, the identification of *APOB* mutations in subjects with NAFLD-HCC would be to allow the diagnosis, in these cases mostly unrecognized, of familial hypobetalipoproteinemia in the first-degree relatives, allowing to establish adequate HCC surveillance.

An additional finding was the novel association between variants in *SQSTM1* and NAFLD-HCC. *SQSTM1* encodes for p62, a component of Mallory-Denk Bodies and hyaline granules⁴⁷. Protein p62 aggregates accumulate in the cytoplasm of damaged liver cells in NASH and HCC⁴⁷, and may promote hepatocytes transformation through the activation of antioxidants and mTOR pathways^{48,49}. In keeping, we also identified variants in genes regulating cell growth via the insulin signaling and mTOR pathways, and, in line with previous findings from our group^{14,31}, in the telomere regulation machinery. However, as the present study was not designed to this aim, enrichment in variants in specific genes will have to be confirmed in larger cohorts.

This study has some limitations. First, the design was cross-sectional with retrospective data collection, so that GRS for NAFLD-HCC will need to be validated in future prospective studies including individuals with NAFLD and other liver diseases at high baseline risk. However, since HCC remains a relatively rare complication of NAFLD (which affects almost one in three individuals in the general population) the risk of misclassifying healthy controls was minimal, and would have rather led to reduction of the study power. Furthermore, the sample size was relatively limited, and therefore we focused our attention on pathogenic variants in candidate genes, which are already known to cause disease. As we considered healthy individuals from the general population as controls, results are potentially applicable to NAFLD-HCC genetic screening at population level without prior knowledge of liver disease severity status. If it will be proven cost-effective and ethically acceptable, this approach may assist in stratifying the risk of liver disease and HCC, besides of other chronic degenerative diseases. Additional studies are required to discover new variants predisposing to NAFLD-HCC, which were not examined in this study. Moreover, we could not evaluate a control group with advanced fibrosis due to NAFLD for the UK NAFLD-HCC validation cohort, in which a different pattern of mutations was observed as compared to the Italian cohort. Finally, findings may only be applicable to individuals of European descent.

In conclusion, rare pathogenic variants in candidate genes involved in the predisposition to liver disease or cancer are associated with an increased risk of developing NAFLD-HCC.

References

1. Younossi, Z. & Henry, L. Contribution of Alcoholic and Nonalcoholic Fatty Liver Disease to the Burden of Liver-Related Morbidity and Mortality. *Gastroenterology* **150**, 1778–1785 (2016).
2. Dongiovanni, P., Romeo, S. & Valenti, L. Hepatocellular carcinoma in nonalcoholic fatty liver: role of environmental and genetic factors. *World J Gastroenterol* **20**, 12945–12955 (2014).
3. Baffy, G., Brunt, E. M. & Caldwell, S. H. Hepatocellular carcinoma in non-alcoholic fatty liver disease: An emerging menace. *J Hepatol* **56**, 1384–1391 (2012).

4. Dyson, J. *et al.* Hepatocellular cancer: The impact of obesity, type 2 diabetes and a multidisciplinary team. *J Hepatol* **60**, 110–117 (2014).
5. Piscaglia, F. *et al.* Clinical patterns of hepatocellular carcinoma in nonalcoholic fatty liver disease: A multicenter prospective study. *Hepatology* **63**, 827–838 (2016).
6. Younossi, Z. M. *et al.* Association of nonalcoholic fatty liver disease (NAFLD) with hepatocellular carcinoma (HCC) in the United States from 2004 to 2009. *Hepatology* **62**, 1723–1730 (2015).
7. Turati, F. *et al.* Family history of liver cancer and hepatocellular carcinoma. *Hepatology* **55**, 1416–1425 (2012).
8. Dongiovanni, P., Romeo, S. & Valenti, L. Genetic Factors in the Pathogenesis of Nonalcoholic Fatty Liver and Steatohepatitis. *BioMed research international* **2015**, 460190 (2015).
9. Caussy, C. *et al.* Nonalcoholic fatty liver disease with cirrhosis increases familial risk for advanced fibrosis. *J Clin Invest* **127**, 2697–2704 (2017).
10. Liu, Y. L. *et al.* Carriage of the PNPLA3rs738409 C > G polymorphism confers an increased risk of non-alcoholic fatty liver disease associated hepatocellular carcinoma. *J Hepatol* **61**, 75–81 (2013).
11. Donati, B. *et al.* MBOAT7 rs641738 variant and hepatocellular carcinoma in non-cirrhotic individuals. *Sci Rep* **7**, 4492 (2017).
12. Anstee, Q. M., Liu, Y. L., Day, C. P. & Reeves, H. L. Reply to: HCC and liver disease risk in homozygous PNPLA3p.I148M carriers approach monogenic inheritance. *J Hepatol* **62**, 982–983 (2015).
13. European Association for the Study of the Liver. Electronic address eee, European Association for the Study of D, European Association for the Study of O. EASL-EASD-EASO Clinical Practice Guidelines for the management of non-alcoholic fatty liver disease. *J Hepatol* **64**, 1388–1402 (2016).
14. Donati, B. *et al.* Telomerase reverse transcriptase germline mutations and hepatocellular carcinoma in patients with nonalcoholic fatty liver disease. *Cancer Med* **6**, 1930–1940 (2017).
15. Caruso, S. *et al.* Germline and somatic DICER1 mutations in familial and sporadic liver tumors. *J Hepatol* **66**, 734–742 (2017).
16. EASL-EORTC clinical practice guidelines: management of hepatocellular carcinoma. *J Hepatol* **56**, 908–943 (2012).
17. Li, H. & Durbin, R. Fast and accurate long-read alignment with Burrows–Wheeler transform. *Bioinformatics* **26**, 589–595 (2010).
18. Li, H. *et al.* The Sequence Alignment/Map format and SAMtools. *Bioinformatics* **25**, 2078–2079 (2009).
19. Quinlan, A. R. & Hall, I. M. BEDTools: a flexible suite of utilities for comparing genomic features. *Bioinformatics* **26**, 841–842 (2010).
20. Van der Auwera, G. A. *et al.* From FastQ data to high confidence variant calls: the Genome Analysis Toolkit best practices pipeline. *Curr Protoc Bioinformatics* **43**(11), 10 11–33 (2013).
21. McKenna, A. *et al.* The Genome Analysis Toolkit: a MapReduce framework for analyzing next-generation DNA sequencing data. *Genome Res* **20**, 1297–1303 (2010).
22. Danecek, P. & McCarthy, S. A. BCFtools/csq: haplotype-aware variant consequences. *Bioinformatics* **33**, 2037–2039 (2017).
23. McLaren, W. *et al.* The Ensembl Variant Effect Predictor. *Genome Biol* **17**, 122 (2016).
24. Wang, K., Li, M. & Hakonarson, H. ANNOVAR: functional annotation of genetic variants from high-throughput sequencing data. *Nucleic Acids Res* **38**, e164 (2010).
25. Danecek, P. *et al.* The variant call format and VCFtools. *Bioinformatics* **27**, 2156–2158 (2011).
26. Zheng, X. *et al.* A high-performance computing toolset for relatedness and principal component analysis of SNP data. *Bioinformatics* **28**, 3326–3328 (2012).
27. Genomes Project, C. *et al.* A global reference for human genetic variation. *Nature* **526**, 68–74 (2015).
28. Zhang, J. *et al.* Germline Mutations in Predisposition Genes in Pediatric Cancer. *N Engl J Med* **373**, 2336–2346 (2015).
29. Zucman-Rossi, J., Villanueva, A., Nault, J. C. & Llovet, J. M. Genetic Landscape and Biomarkers of Hepatocellular Carcinoma. *Gastroenterology* **149**, 1226–1239 e1224 (2015).
30. Scorza, M. *et al.* Genetic diseases that predispose to early liver cirrhosis. *Int J Hepatol* **2014**, 713754 (2014).
31. Donati, B. & Valenti, L. Telomeres, NAFLD and Chronic Liver Disease. *International Journal of Molecular Sciences* **17** (2016).
32. Dongiovanni, P. & Valenti, L. Genetics of nonalcoholic fatty liver disease. *Metabolism: clinical and experimental* **65**, 1026–1037 (2016).
33. Rehm, H. L. *et al.* ClinGen—the Clinical Genome Resource. *N Engl J Med* **372**, 2235–2242 (2015).
34. Kircher, M. *et al.* A general framework for estimating the relative pathogenicity of human genetic variants. *Nat Genet* **46**, 310–315 (2014).
35. Cohen, J. C. *et al.* Multiple rare alleles contribute to low plasma levels of HDL cholesterol. *Science* **305**, 869–872 (2004).
36. Morgenthaler, S. & Thilly, W. G. A strategy to discover genes that carry multi-allelic or mono-allelic risk for common diseases: a cohort allelic sums test (CAST). *Mutat Res* **615**, 28–56 (2007).
37. Angulo, P. *et al.* The NAFLD fibrosis score: a noninvasive system that identifies liver fibrosis in patients with NAFLD. *Hepatology* **45**, 846–854 (2007).
38. Venkatraman, E. S. & Begg, C. B. A distribution-free procedure for comparing receiver operating characteristics curves from a paired experiment. *Biometrika* **83**, 835–848 (1996).
39. Bruzzi, P., Green, S. B., Byar, D. P., Brinton, L. A. & Schairer, C. Estimating the population attributable risk for multiple risk factors using case-control data. *Am J Epidemiol* **122**, 904–914 (1985).
40. Stickel, F. *et al.* Genetic variants in PNPLA3 and TM6SF2 predispose to the development of hepatocellular carcinoma in individuals with alcohol-related cirrhosis. *Am J Gastroenterol* (2018).
41. Donati, B. *et al.* The rs2294918 E434K Variant Modulates Patatin-Like Phospholipase Domain-Containing 3 Expression and Liver Damage. *Hepatology* **63**, 787–798 (2016).
42. Valenti, L. & Dongiovanni, P. Mutant PNPLA3 I148M protein as pharmacological target for liver disease. *Hepatology* **66**, 1026–1028 (2017).
43. Pirazzi, C. *et al.* PNPLA3 has retinyl-palmitate lipase activity in human hepatic stellate cells. *Hum Mol Genet* **23**, 4077–4085 (2014).
44. Cancer Genome Atlas Research Network. Electronic address wbe, Cancer Genome Atlas Research N. Comprehensive and Integrative Genomic Characterization of Hepatocellular Carcinoma. *Cell* **169**, 1327–1341 e1323 (2017).
45. Valenti, L. & Romeo, S. Editorial: new insights into the relationship between the intestine and non-alcoholic fatty liver—is “fatty gut” involved in disease progression? *Aliment Pharmacol Ther* **46**, 377–378 (2017).
46. Lee, G. *et al.* Clinical significance of APOB inactivation in hepatocellular carcinoma. *Exp Mol Med* **50**, 147 (2018).
47. Stumptner, C., Fuchsichler, A., Zatloukal, K. & Denk, H. *In vitro* production of Mallory bodies and intracellular hyaline bodies: the central role of sequestosome 1/p62. *Hepatology* **46**, 851–860 (2007).
48. Inami Y, *et al.* Persistent activation of Nrf2 through p62 in hepatocellular carcinoma cells. *J Cell Biol* **193**, 275–284 (2011).
49. Umemura, A. *et al.* p62, Upregulated during Preneoplasia, Induces Hepatocellular Carcinogenesis by Maintaining Survival of Stressed HCC-Initiating Cells. *Cancer Cell* **29**, 935–948 (2016).

Acknowledgements

The study was supported by the Fondazione IRCCS Ca’ Granda – Istituto Nazionale di Genetica Molecolare (INGM) Molecular Medicine Grant 2014–2016, and the myFIRST AIRC grant n.16888 for the EPIDEMIC-NAFLD project, Ricerca Finalizzata 2016 Ministero della Salute - RF-2016-02364358 (LV), Ricerca Corrente Fondazione IRCCS Ca’ Granda, Associazione Malattie Metaboliche del Fegato ONLUS (non-profit organization) (LV and SF), Associazione Italiana Studio Fegato (AISF: MM and LV). HR and recruitment of patients to the Newcastle Academic Health

Partners Bioresource was supported by the European Community's Seventh Framework Programme (FP7/2001–2013) under grant agreement HEALTH-F2-2009-241762 for the project FLIP.

Author Contributions

S.P. study design, data collection and analysis, important intellectual contribution and manuscript drafting. G.B. data analysis, manuscript drafting and important intellectual contribution. A.P. data analysis. P.D. data collection. B.D. data collection. M.V.M.C. data collection. M.M. data collection. A.L.F. data collection. R.R. data collection. S.P. data collection. A.G. data collection. L.M. data collection. G.S. data collection and important intellectual contribution. E.B. data collection and important intellectual contribution. S.F. study oversight. A.A. data collection. R.D.A. data collection. C.X. data analysis and important intellectual contribution. S.R. important intellectual contribution. R.D.F. study oversight. H.R. data collection, funding, study oversight and important intellectual contribution. L.V.C.V. study design, funding, oversight, data analysis, data collection and interpretation, manuscript drafting, and important intellectual contribution.

Additional Information

Supplementary information accompanies this paper at <https://doi.org/10.1038/s41598-019-39998-2>.

Competing Interests: Authors declare that they do not have any conflict of interest or competing interests relevant to the present manuscript. L.V. received speaking fees from: M.S.D. Gilead, AlfaSigma, AbbVie, participated in consulting or advisory boards for: Gilead, Pfizer, Astra Zeneca, Novo Nordisk, and received a research grant from: Gilead.

Publisher's note: Springer Nature remains neutral with regard to jurisdictional claims in published maps and institutional affiliations.



Open Access This article is licensed under a Creative Commons Attribution 4.0 International License, which permits use, sharing, adaptation, distribution and reproduction in any medium or format, as long as you give appropriate credit to the original author(s) and the source, provide a link to the Creative Commons license, and indicate if changes were made. The images or other third party material in this article are included in the article's Creative Commons license, unless indicated otherwise in a credit line to the material. If material is not included in the article's Creative Commons license and your intended use is not permitted by statutory regulation or exceeds the permitted use, you will need to obtain permission directly from the copyright holder. To view a copy of this license, visit <http://creativecommons.org/licenses/by/4.0/>.

© The Author(s) 2019