

Geomorphological map of Mt Cusna ridge (Northern Apennines - Italy)

Coordinate System: UTM 32N
Datum: WGS84

Scale 1:10000

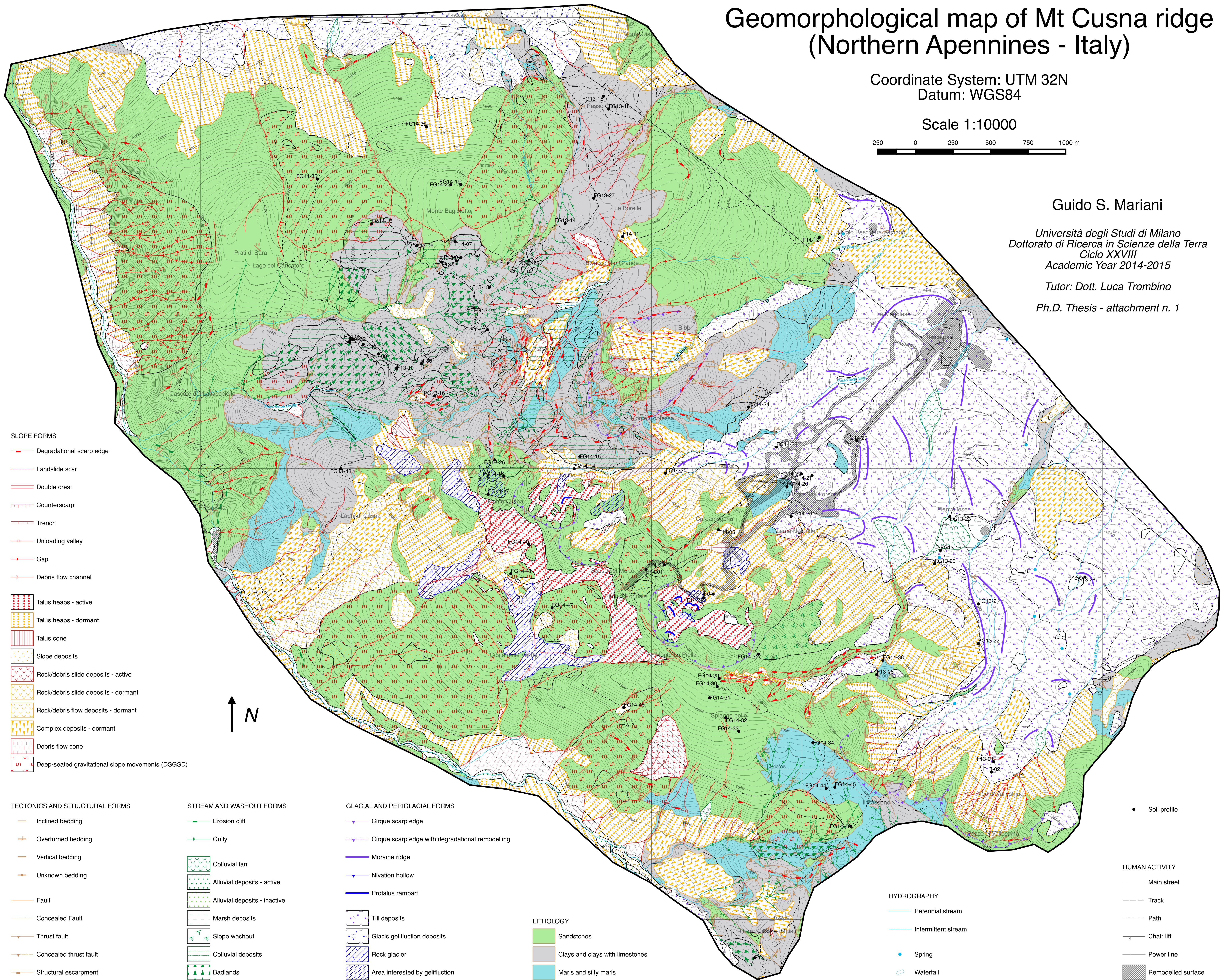


Guido S. Mariani

Università degli Studi di Milano
Dottorato di Ricerca in Scienze della Terra
Ciclo XXVIII
Academic Year 2014-2015

Tutor: Dott. Luca Trombino

Ph.D. Thesis - attachment n. 1



SLOPE FORMS

- Degradational scarp edge
- Landslide scar
- Double crest
- Counterscarp
- Trench
- Unloading valley
- Gap
- Debris flow channel

- Talus heaps - active
- Talus heaps - dormant
- Talus cone
- Slope deposits
- Rock/debris slide deposits - active
- Rock/debris slide deposits - dormant
- Rock/debris flow deposits - dormant
- Complex deposits - dormant
- Debris flow cone
- Deep-seated gravitational slope movements (DSGSD)

TECTONICS AND STRUCTURAL FORMS

- Inclined bedding
- Overturned bedding
- Vertical bedding
- Unknown bedding
- Fault
- Concealed Fault
- Thrust fault
- Concealed thrust fault
- Structural escarpment

STREAM AND WASHOUT FORMS

- Erosion cliff
- Gully
- Colluvial fan
- Alluvial deposits - active
- Alluvial deposits - inactive
- Marsh deposits
- Slope washout
- Colluvial deposits
- Badlands

GLACIAL AND PERIGLACIAL FORMS

- Cirque scarp edge
- Cirque scarp edge with degradational remodelling
- Moraine ridge
- Nivation hollow
- Protalus rampart
- Till deposits
- Glacis gelifluction deposits
- Rock glacier
- Area interested by gelifluction

LITHOLOGY

- Sandstones
- Clays and clays with limestones
- Marls and silty marls

HYDROGRAPHY

- Perennial stream
- Intermittent stream
- Spring
- Waterfall

HUMAN ACTIVITY

- Main street
- Track
- Path
- Chair lift
- Power line
- Remodelled surface
- Soil profile