

## Increased *MET* Gene Copy Number Negatively Affects Survival of Surgically Resected Non–Small-Cell Lung Cancer Patients

Federico Cappuzzo, Antonio Marchetti, Margaret Skokan, Elisa Rossi, Sujatha Gajapathy, Lara Felicioni, Maela del Grammastro, Maria Grazia Sciarrotta, Fiamma Buttitta, Matteo Incarbone, Luca Toschi, Giovanna Finocchiaro, Annarita Destro, Luigi Terracciano, Massimo Roncalli, Marco Alloisio, Armando Santoro, and Marileila Varela-Garcia

### ABSTRACT

#### Purpose

To investigate the prognostic role of genomic gain for *MET* and epidermal growth factor receptor (*EGFR*) genes in surgically resected non–small-cell lung cancer (NSCLC).

#### Patients and Methods

This retrospective study included 447 NSCLC patients with available tumor tissue from primary lung tumor and survival data. *EGFR* and *MET* status was evaluated by fluorescent in situ hybridization (FISH) in tissue microarray sections.

#### Results

*EGFR* FISH results were obtained in 376 cases. *EGFR* gene amplification and high polysomy (*EGFR* FISH+) were observed in 10.4% and 32.4% of cases, respectively. *EGFR* FISH-positive patients had a nonsignificant shorter survival than *EGFR* FISH-negative patients ( $P = .4$ ). Activating *EGFR* mutations were detected in 9.7% of 144 stage I-II disease with no impact on survival. *MET* FISH analysis was performed in 435 cases. High *MET* gene copy number (mean  $\geq 5$  copies/cell) was observed in 48 cases (*MET*+, 11.1%), including 18 cases with true gene amplification (4.1%). *MET*+ status was associated with advanced stage ( $P = .01$ ), with grade 3 ( $P = .016$ ) and with *EGFR* FISH+ result ( $P < .0001$ ). No patient with activating *EGFR* mutation resulted *MET*+. In the whole population, *MET*-positive patients had shorter survival than *MET*-negative patients ( $P = .005$ ). Multivariable model confirmed that *MET*-negative patients had a significant reduction in the risk of death than *MET*-positive patients (hazard ratio, 0.66;  $P = .04$ ).

#### Conclusion

*MET* increased gene copy number is an independent negative prognostic factor in surgically resected NSCLC. *EGFR* gene gain does not impact survival after resection.

*J Clin Oncol* 27:1667-1674. © 2009 by American Society of Clinical Oncology

### INTRODUCTION

Since its identification, the epidermal growth factor receptor (EGFR) has emerged as one of the most relevant targets for cancer treatment.<sup>1</sup> During the past few years, anti-EGFR strategies offered new hopes to patients with metastatic non–small-cell lung cancer (NSCLC). Cetuximab (C225, Erbitux; ImClone System Inc, New York, NY), a monoclonal antibody against the extracellular domain of EGFR, modestly but significantly prolonged survival of chemotherapy-naïve NSCLC patients when used in combination with cisplatin and vinorelbine.<sup>2</sup> Erlotinib (OSI 774; Tarceva; Genentech, South San Francisco, CA), an orally available EGFR tyrosine kinase inhibitor (TKI), significantly prolonged sur-

vival when used as single agent in pretreated NSCLC.<sup>3</sup> Studies in NSCLC with EGFR-TKIs or cetuximab showed that these agents are particularly effective in individuals with certain biologic characteristics.<sup>4-6</sup> Increased *EGFR* gene copy number detected by fluorescent in situ hybridization (FISH) emerged as the strongest predictor for survival in retrospective analyses of large phase III trials comparing EGFR-TKI versus placebo.<sup>7-9</sup> More recently, a retrospective analysis of NSCLC patients treated with chemotherapy plus cetuximab showed prolonged progression-free survival for individuals with increased *EGFR* gene copy number (*EGFR* FISH positive) when compared to *EGFR* FISH negative.<sup>10</sup> Although these data indicated a predictive value of *EGFR* gene gain, other studies raised the

From the Istituto Clinico Humanitas, Istituto di Ricovero e Cura a Carattere Scientifico, Department of Oncology-Hematology; University of Milan School of Medicine, Department of Pathology, IRCCS Istituto Clinico Humanitas, Rozzano; Clinical Research Center, Center of Excellence on Aging, University-Foundation, Chieti; CINECA, Interuniversity Consortium, Bologna, Italy; University of Colorado Cancer Center, Department of Medicine/Medical Oncology, Aurora, CO; and the University Hospital, Division of Molecular Pathology, Basel, Switzerland.

Submitted July 16, 2008; accepted November 17, 2008; published online ahead of print at www.jco.org on March 2, 2009.

Supported in part by Italian Association for Cancer Research (F.C.).

Authors' disclosures of potential conflicts of interest and author contributions are found at the end of this article.

Corresponding author: Federico Cappuzzo, MD, Istituto Clinico Humanitas, Istituto di Ricovero e Cura a Carattere Scientifico, via Manzoni 56, 20089 Rozzano, Italy; e-mail: federico.cappuzzo@humanitas.it.

The Appendix is included in the full-text version of this article, available online at www.jco.org. It is not included in the PDF version (via Adobe® Reader®).

© 2009 by American Society of Clinical Oncology

0732-183X/09/2710-1667/\$20.00

DOI: 10.1200/JCO.2008.19.1635

possibility that this event may be associated with a better natural history.<sup>11-12</sup> The impact of EGFR protein expression and gene copy number on survival of surgically resected NSCLC patients is not a resolved issue. Distinct studies conducted at the protein level did not reach similar conclusions regarding duration of survival and level of EGFR expression.<sup>13-22</sup> Studies at the gene level using FISH have not shown significant survival difference between patients with high or low *EGFR* copy numbers; however, the scoring criteria were different than described in studies of patients treated with EGFR-TKIs.<sup>22-24</sup>

MET is the receptor for hepatocyte growth factor and frequently overexpresses in NSCLC.<sup>25-27</sup> Previous studies described *MET* gene amplification in up to 10% of gastric cancers,<sup>28</sup> in 4% of esophageal cancer,<sup>29</sup> and in endometrial cancer.<sup>30</sup> In addition to proliferative and antiapoptotic activities that are common to many growth factors, MET activation demonstrated to stimulate cell-cell detachment, migration, and invasiveness.<sup>31</sup> Preclinical findings suggested that lung cancer cell lines harboring *MET* gene amplification are dependent on MET for growth and survival.<sup>32</sup> Recent data showed that *MET* amplification is a rare event in NSCLC, occurring in up to 7% of cases.<sup>33-35</sup> The rarity of *MET* amplification in NSCLC, particularly at the high level observed in TKI-resistant cell-line models,<sup>34,36</sup> suggested that this event plays a limited role in primary resistance to EGFR-TKI. In contrast, *MET* gene amplification is one of the most relevant mechanisms involved in EGFR-TKI acquired resistance. Engelman et al<sup>36</sup> reported that NSCLC overcomes inhibition of EGFR-TKIs by amplifying the *MET* oncogene to activate HER3, a member of the EGFR family, and the PI3K-AKT cell survival pathway. In another study, Bean et al<sup>33</sup> showed *MET* amplification in 21% of patients with acquired resistance to gefitinib or erlotinib and only in 3% of untreated patients, confirming that MET could be a relevant therapeutic target for some individuals with acquired resistance to EGFR-TKIs.

The conflicting data on the prognostic value of *EGFR* together with the relevance of MET as a potential target against NSCLC and the absence of data on *MET* gene copy number effect on survival led us to conduct a study aiming to evaluate the prognostic effect of *EGFR/MET* in NSCLC patients.

## PATIENTS AND METHODS

### Patient Selection

This retrospective study was conducted in a cohort of 447 NSCLC patients that received a radical resection of a primary NSCLC at Istituto Clinico Humanitas IRCCS, Rozzano, Italy, during 2000 to 2004. The only criteria used for patient selection included availability of tumor tissue from primary lung cancer and survival data. Paraffin-embedded tumor specimens were used to construct a tissue microarray with 600- $\mu$ m diameter cores. Each patient was represented by three tissue cores. An adhesive-coated tape system (Instrumedics, Hackensack, NJ) was used for sectioning the tumor array blocks at 4  $\mu$ m. The study was approved by the local ethics committee and was conducted in accordance with ethical principles stated in the most recent version of the Declaration of Helsinki or the applicable guidelines on good clinical practice, whichever represented the greater protection of the individuals.

### FISH Analyses

Unstained 4- $\mu$ m sections from each of the three tissue microarray were submitted to dual-color FISH assays using the *EGFR/CEP7* probe set from Abbott Molecular (Abbott Park, IL) and a *MET/CEP7* probe cocktail prepared with the in house developed *MET* DNA (RP 11-95I20 BAC clone) labeled with SpectrumRed and the SpectrumGreen CEP7 (Abbott Molecular). The FISH assays were performed according to protocol previously described,<sup>5</sup> including

pretreatment with 2 $\times$  sodium chloride-sodium citrate buffer at 75°C and digestion with proteinase K for 7 to 15 minutes each, codenaturation at 85°C for 15 minutes, hybridization for approximately 36 hours, and rapid posthybridization washes with 2 $\times$  sodium chloride-sodium citrate buffer/0.4 nonylphenoxyl-polyethoxyethanol. Signals were enumerated in at least 50 tumor nuclei per core, using epifluorescence microscope with single interference filters sets for green (FITC), red (Texas red) and blue (DAPI) as well as dual (red/green) and triple (blue, red, green) band pass filters. For each core, the mean and standard deviation of copy number per cell of each tested DNA sequence, the percentage of cells with  $\leq 2$ , 3, and  $\geq 4$  copies of the *EGFR* and *MET* genes, and the ratio *EGFR/CEP7* and *MET/CEP7* were calculated. When heterogeneous results were detected among the three tested cores, the core with the highest mean copy number was used to represent the patient in the statistic analyses. For documentation, images were captured using a CCD camera and merged using dedicated software (CytoVision; Genetix USA, Boston, MA).

### Mutation Analysis

Genomic DNA was extracted from tumors and normal lung tissues according to standard procedures. Genetic analysis of exons 19 and 21 of the *EGFR* gene was performed by PCR-single-strand conformation polymorphism and direct sequencing as previously described,<sup>37</sup> with the following modifications. Sample were amplified in triplicate and run side by side in order to exclude artifactual sequence changes which are common events in formalin-fixed, paraffin-embedded samples.<sup>38-39</sup> Samples harboring mutations were reamplified in duplicates, using the same experimental conditions, purified and subjected to bidirectional dye-terminator sequencing with the same primers employed for amplification. Sequencing fragments were detected by capillary electrophoresis using the ABI Prism 3100 DNA analyzer (Applied Biosystems, Foster City, CA). Sequence chromatograms were analyzed by Mutation Surveyor 2.61 (SoftGenetics, State College, PA), followed by manual review.

### Statistical Analyses

The primary end point was to assess whether *EGFR* and *MET* gene copy number affected survival of surgically resected NSCLC. Overall survival (OS), calculated from the time of diagnosis to patient death or last contact, and the 95% CIs were evaluated by survival analysis using Kaplan-Meier method.<sup>40</sup> Associations with clinical characteristics were compared by Fisher's exact test or  $\chi^2$  test. OS for the groups with negative and positive biomarkers were compared using the log-rank test. Statistical significance was set at lower than .05 for each analysis. Multivariable analysis was performed using Cox proportional hazards regression analysis with a step-down procedure method. The criterion for variable removal was the likelihood ratio statistic based on the maximum partial likelihood estimates (default *P* value of .10 for removal from the model). Observations were independent and the proportional hazard assumption was respected. All statistical analyses were performed using SPSS version 11.5.1 (SPSS Italia srl, Bologna, Italy).

## RESULTS

### Patient Characteristics

A total of 447 surgically resected NSCLC patients were included in this analysis. As presented in Table 1, the majority of patients were male (83.4%), former (51.9%) or current (35.1%) smokers, with moderately or poorly differentiated tumors (grade 2 and 3). The median age was 66 years. All patients received radical surgery, with evidence of pathologic stage III in 34.7% and stage IV in 6% of cases. Patients with metastatic disease received surgery following or at the same time of single brain or lung lesion removal.

Because adjuvant chemotherapy become a standard approach only after 2004, no postoperative therapy was delivered to patients in stage I-II, and only a minority of patients with stage III disease (18

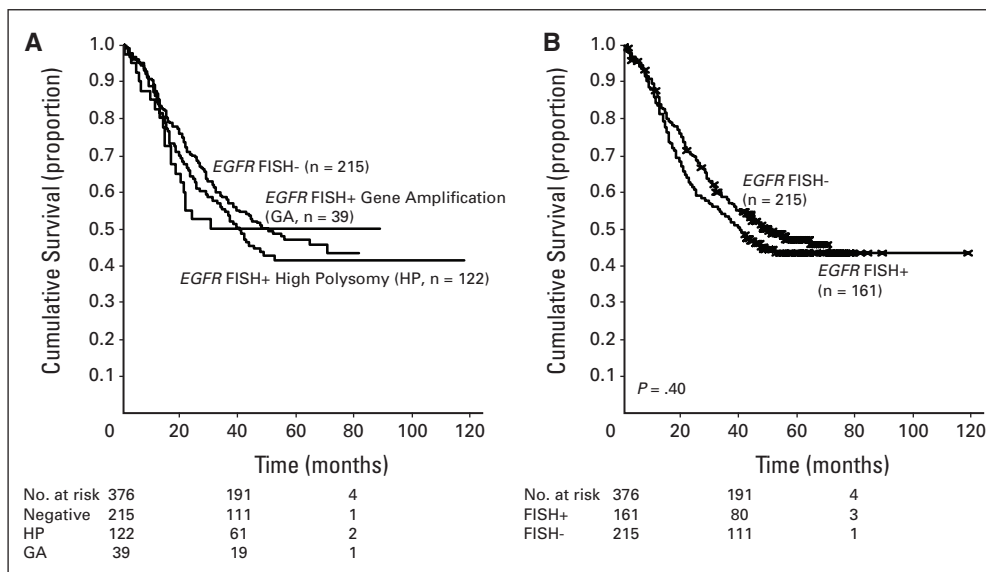
**Table 1. Patient Characteristics**

Characteristic	Total	%
Total	447	
Median age, years	66	
Range	33-86	
Sex		
Male	373	83.4
Female	74	16.6
Smoking history		
Never	40	8.9
Former	232	51.9
Current	157	35.1
Unknown	18	4.1
Histology		
Adenocarcinoma + bronchioloalveolar	241	53.9
Squamous cell carcinoma	139	31.1
Other*	67	15.0
Pathologic stage		
I	166	37.1
II	99	22.2
III	155	34.7
IV	27	6.0
Grade		
I	32	7.2
II	255	57.3
III	158	35.2
Not defined	2	0.3

\*Other histology included seven patients with large cell carcinoma, 28 cases with neuroendocrine differentiation, and 32 undifferentiated non-small-cell lung cancer.

cases) received adjuvant platinum-based chemotherapy. Patients with stage III disease and pathological evidence of N2 disease (n = 101) received postoperative mediastinal radiotherapy.

With a median follow-up of 40 months, in the whole population OS was 43.9 months. As expected, median survival was longer in stage I-II than in stage III-IV (not reached v 22.3 months;  $P < .0001$ ). No significant difference in survival was observed according to sex, smoking history, histology, or grading.



**Fig 1.** (A) A total of 215 patients were epidermal growth factor receptor (EGFR) fluorescent in situ hybridization (FISH) negative (57.2%), and 161 were EGFR FISH positive (42.8%), including 122 with EGFR high polysomy (32.4%) and 39 with EGFR gene amplification (10.4%). Median survival was 48.3 months for the low polysomic group, 40.7 months for high polysomic, and 30.7 months for patients with gene amplification. (B) Patients with high polysomy or gene amplification (EGFR FISH+) had a median survival of 40.7 months, while patients with low polysomy (EGFR FISH-) had a median survival of 48.3 months. The difference was not statistically significant ( $P = .4$ ).

**EGFR FISH Results**

EGFR copy number was evaluated by FISH in 376 cases, and a total of 161 cases (42.8%) were considered as FISH positive according to criteria adopted for selection of patients candidate for EGFR-TKI therapy and described elsewhere.<sup>5</sup> Positive patients included 39 cases with true gene amplification (10.4%) and 122 cases with high polysomy (32.4%). As illustrated in Figure 1A, median survival was longer in the EGFR FISH-negative (48.3 months) than in patients with high polysomy (40.7 months) or EGFR gene amplification (30.7 months). Patients with true EGFR gene amplification had shorter survival when compared with the other two groups combined (30.7 v 44.6 months), even if the difference was not statistically significant ( $P = .85$ ). Moreover, as illustrated in Figure 1B, the difference in survival between EGFR FISH-positive and FISH-negative groups was not statistically significant (40.7 v 48.3 months;  $P = .4$ ).

We further analyzed the survival outcome of EGFR FISH-positive and FISH-negative patients according to clinical characteristics, and no significant difference was observed, as presented in Table 2.

**MET FISH Results**

MET was evaluated in 435 cases, and the median mean MET gene copy number was 3.27 (mean range, 1.5 to 21.9 copies per cell). Patients were classified in six groups according to the ascending MET gene copy number, as illustrated in Figure 2A. Because the survival outcome of patients with a mean MET gene copy number per cell higher than 5 and higher than 6 was similar and worse than the other four groups with a mean copy number lower than 5, we considered as MET FISH-positive all cases with mean  $\geq 5$  copies per cell and negative all cases with mean fewer than 5 copies per cell. Using this cutoff, a total of 48 patients (11.1%) resulted MET FISH positive, including 18 cases (4.1%) with true gene amplification. Among patients with gene amplification, the median mean gene copy number was 10.28 (range, 4.87 to 27.50). MET FISH status was not associated with sex, smoking status, or histology. In contrast, MET FISH-positive status was significantly associated with grade 3 ( $P = .016$ ) and with advanced stage ( $P = .01$ ). Among patients with MET gene amplification, three had stage I disease, three had a stage II, nine had stage III, and three had

**Table 2.** Survival in *EGFR* FISH Positive and Negative Patients According to Clinical Characteristics

Characteristic	<i>EGFR</i> FISH+ (No./month)	<i>EGFR</i> FISH- (No./month)	<i>P</i>
Sex			
Female	26/37.3	32/31.3	.9
Male	135/42.0	183/51.8	.4
Smoking status			
Never smokers	13/40.7	17/NR	.3
Smokers (former + current)	141/42.0	189/47.6	.7
Histology			
Adenocarcinoma + bronchioloalveolar	87/40.7	111/44.6	.6
Other	74/39.6	104/50.2	.6
Grade			
I-II	101/41.3	132/55.9	.11
III	60/37.3	81/36.6	.7
Stage			
I-II	95/NR	129/NR	.7
III-IV	66/20.5	86/25.6	.4

Abbreviations: *EGFR*, epidermal growth factor receptor; FISH, fluorescent in situ hybridization; NR, not reached.

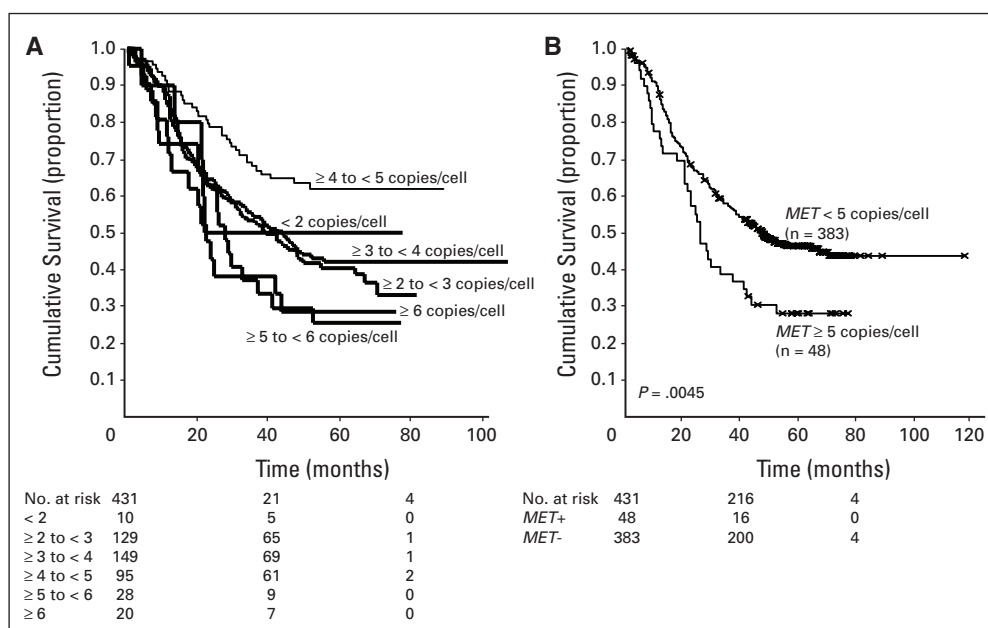
stage IV. As shown in Figure 2B, in the whole population *MET* FISH-positive patients had a significant shorter survival than *MET* FISH-negative (25.8 v 47.5 months;  $P = .005$ ). As illustrated in Figures 3A to 3D (Appendix and Appendix Figs A1 to A5, online only), *MET* FISH-positive patients had shorter survival than *MET*-negative irrespective of stage and grade, even if the difference was statistically significant only in patients with stage I-II ( $P = .032$ ) and in individuals with grade 3 disease ( $P = .03$ ).

### *MET* Gene Copy Number and *EGFR*

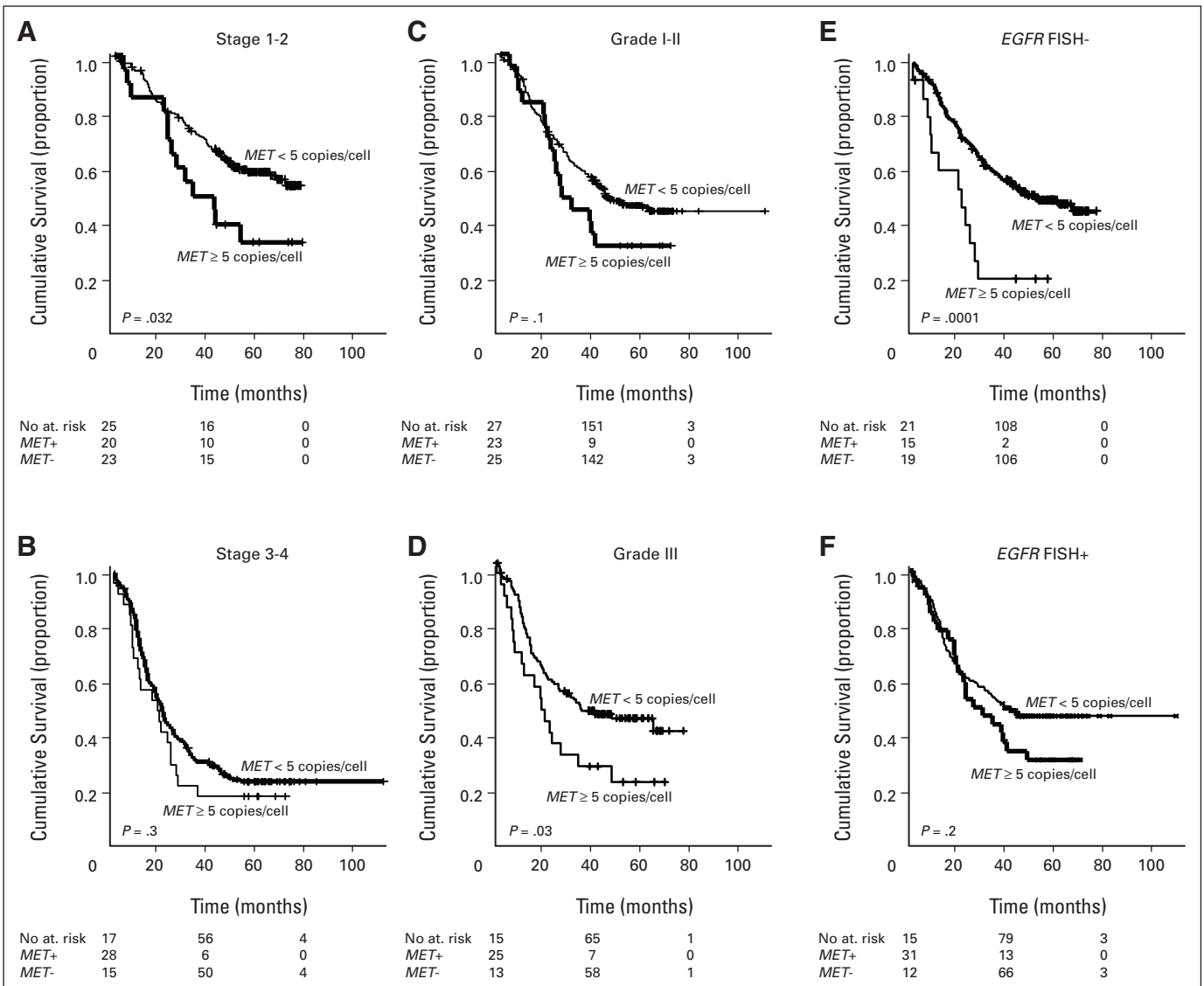
To further explore the prognostic impact of *MET* gene copy number in a context of *EGFR* gene gain or mutation, we analyzed *MET* according to *EGFR* status. Patients with adenocarcinoma with or without bronchioloalveolar features and with stage I-II disease ( $n = 144$ ) were screened for *EGFR* mutations, and 14 (9.7%)

harbored a deletion in exon 19 (seven patients) or the L858R mutation in exon 21 (seven patients). No difference in survival was observed between patients with or without mutation (67.1 v not reached;  $P = .99$ ). Interestingly, no patient with *EGFR* mutation was *MET* FISH positive, and among *EGFR* wild type, *MET* FISH-positive patients had significantly shorter survival than *MET* FISH-negative patients ( $P = .005$ ).

*MET* FISH-positive patients were more frequently *EGFR* FISH positive, and that association was statistically significant ( $P < .0001$ ). *EGFR* FISH negative/*MET* FISH negative had significantly longer survival (55.9 v 22.6 months;  $P = .0001$ ) than *EGFR* FISH negative/*MET* FISH positive (Fig 3E). Among patients *EGFR* FISH positive, survival was longer in *MET* FISH-negative than in *MET* FISH positive (42.6 v 28.9 months) even if the difference was not statistically significant ( $P = .2$ ; Fig 3F).



**Fig 2.** (A) Survival outcome of patients with a mean of  $\geq 5$  copies of *MET*/cell was similar to the outcome of patients with a mean of  $\geq 6$  copies of *MET*/cell, and shorter than survival of patients with less than 5 copies of *MET*/cell. Based on these results, mean of  $\geq 5$  copies of *MET*/cell qualified the result as *MET*+. Median survival was 22.3 months for the 10 patients with mean *MET* copy number less than 2; 44.4 months in 129 individuals with mean *MET* copy number  $\geq 2$  and less than 3; 38.6 months for 149 patients with mean *MET* copy number  $\geq 3$  and less than 4; not reached for 95 patients with mean *MET* copy number  $\geq 4$  and less than 5; 28.1 months for 28 individuals with *MET* copy number  $\geq 5$  and less than 6; 21.4 months for 20 patients with mean copy number  $\geq 6$ . (B) Patients *MET* fluorescent in situ hybridization (FISH)+ ( $n = 48$ ) had a median survival of 25.8 months versus 47.5 months in *MET* FISH- ( $n = 383$ ). This difference was statistically significant ( $P = .0045$ ).



**Fig 3.** Survival of *MET* fluorescent in situ hybridization (*FISH*)<sup>+</sup> and *MET FISH*<sup>-</sup> according to stage, grade, and epidermal growth factor receptor (*EGFR*) *FISH*. (A) In stage I-II disease, 20 patients were *MET FISH*<sup>+</sup> and 233 were *MET FISH*<sup>-</sup>. Median survival was not reached in *MET FISH*<sup>-</sup> and was 33.0 months in *MET FISH*<sup>+</sup>. This difference was statistically significant ( $P = .032$ ). (B) In stage III-IV disease, *MET FISH*<sup>+</sup> patients ( $n = 28$ ) had shorter survival (20.8 v 22.8 months) than *MET FISH*<sup>-</sup> ( $n = 150$ ). This difference was not statistically significant ( $P = .3$ ). (C) In grade 1-2 disease, *MET FISH*<sup>+</sup> ( $n = 23$ ) had shorter survival (28.1 v 48.8 months) than *MET FISH*<sup>-</sup> ( $n = 250$ ). The difference did not reach the statistical significance ( $P = .1$ ). (D) In grade 3 disease, *MET FISH*<sup>+</sup> ( $n = 25$ ) had significantly shorter survival (20.8 v 38.1 months) than *MET FISH*<sup>-</sup> ( $n = 131$ ). The difference was statistically significant ( $P = .03$ ). (E) *EGFR FISH* negative/*MET FISH*<sup>-</sup> ( $n = 197$ ) had significantly longer survival (55.9 v 22.6 months;  $P = .0001$ ) than *EGFR FISH*<sup>-</sup>/*MET FISH*<sup>+</sup> ( $n = 15$ ). (F) Among patients *EGFR FISH*<sup>+</sup>, survival was longer in *MET FISH*<sup>-</sup> ( $n = 128$ ) than in the 31 patients *MET FISH*<sup>+</sup> (median survival, 42.6 v 28.9 months) even if the difference was not statistically significant ( $P = .2$ ).

**Univariable and Multivariable Analyses**

Table 3 presents the results of the univariate and multivariate survival analyses that included sex, stage, smoking history, grade, histology, *EGFR FISH*, and *MET FISH*. In the univariate analysis, only stage I-II (hazard ratio [HR], 0.40), and *MET FISH*-negative status (HR, 0.59) were significantly associated with a reduced risk of death. The multivariate model confirmed that patients with stage I or II and patients *MET FISH*-negative had a lower risk of death than patients with stage III or IV (HR, 0.42;  $P < .0001$ ) or *MET FISH*<sup>+</sup> (HR, 0.66;  $P = .04$ ). In order to explore the possible impact of *EGFR* mutations, we further analyzed the risk of death according to the above mentioned categories in the 144 sequenced patients. In this model, that excluded patients with stage III-IV disease with nonadenocarcinoma

histology, *MET FISH*-negative status was the only variable significantly associated with a reduced risk of death (HR, 0.32; 95%CI, 0.14 to 0.71;  $P = .006$ ).

**DISCUSSION**

In this study we evaluated the prognostic role of two of the most relevant biomarkers in NSCLC, and to our knowledge, report for the first time that *MET* increased gene copy number represents a negative prognostic factor in radically resected NSCLC. *MET FISH*-positive patients had a significantly shorter survival than *MET FISH*-negative patients, and this negative prognostic effect was independent of any

**Table 3.** Univariable and Multivariable Analyses on Survival

Variable	Category	Univariable			Multivariable		
		HR	95% CI	P	HR	95% CI	P
Sex	Male/female	0.91	0.66 to 1.26	.6	0.87	0.57 to 1.33	.5
Smoking	Smoker/never smoker	1.28	0.81 to 2.04	.3	1.24	0.69 to 2.25	.5*
Histology	Adenocarcinoma/other	0.97	0.75 to 1.25	.8	1.02	0.76 to 1.38	.9
Grade	I + II/III	0.78	0.60 to 1.01	.06	0.89	0.66 to 1.20	.4
Stage	I + II/III + IV	0.40	0.31 to 0.51	< .0001†	0.42	0.31 to 0.56	< .0001†
<i>MET</i> FISH	< 5/≥ 5 copies	0.59	0.41 to 0.85	.005‡	0.66	0.43 to 0.99	.04‡
<i>EGFR</i> FISH	Negative/positive	0.89	0.67 to 1.17	.34	1.02	0.74 to 1.39	.9

Abbreviations: HR, hazard ratio; FISH, fluorescent in situ hybridization; EGFR, epidermal growth factor receptor.

\*Sex, smoking status, histology, grade, and *EGFR* FISH variables were removed from the model at the last step of multivariable analysis.

†Adenocarcinoma category also included bronchioloalveolar histology.

‡Statistically significant.

other clinical or biologic characteristic, including those factors classically associated with sensitivity to EGFR-TKIs.<sup>4-6</sup>

*MET* has gained considerable interest through its apparent deregulation by overexpression or mutation in various cancers, including NSCLC.<sup>41</sup> Several anti-*MET* drugs are under evaluation in clinical trials, and the interest around these compounds has consistently increased since an interaction between EGFR and *MET* has been observed.<sup>42</sup> In addition, two recent studies showed that *MET* amplification is responsible for EGFR-TKI acquired resistance in approximately 20% of patients.<sup>33,36</sup> Although the great interest on *MET*, only few small studies evaluated whether this target could influence patient survival.<sup>25,27,43-47</sup> In the study conducted by Cheng et al<sup>43</sup> in 45 NSCLC patients, overexpression of circulating c-*MET* was significantly associated with early recurrence. In another study conducted in 106 NSCLC, Beau-Faller et al<sup>44</sup> showed that adenocarcinoma patients with *MET* amplification had a trend for poor prognosis. Our study, conducted in a large series of non-small-cell lung cancer, provides clear evidence that *MET* is a negative prognostic factor, further supporting anti-*MET* strategies in this disease. Nevertheless, we cannot rule out the hypothesis that the poor prognosis detected by the *MET* FISH assay is not due to a broad level of genomic instability, since the assay only investigated changes in chromosome 7. A relevant aspect of our study was the significant association with *EGFR* gene copy number, similarly to what has been recently described by our group in colorectal cancer.<sup>48</sup> We found that approximately 20% of *EGFR* FISH-positive patients were also *MET* positive, raising the possibility that some *EGFR* FISH-positive individuals could be resistant to EGFR-TKI due to *MET* over-representation. Nevertheless, recent findings suggested that only high levels of *MET* amplification could impair EGFR-TKI sensitivity.<sup>34</sup> In this study, among *EGFR* FISH-positive patients, only three patients had *MET* amplification at equal or higher than levels previously reported in EGFR-TKI resistant models.<sup>33,36</sup> Moreover, the lack of association between *MET* FISH-positive and *EGFR* mutations and the rarity of coamplification of *MET* and *EGFR* genes (only 1.1% in our cohort) suggest that chromosome 7 polysomy was responsible for the significant association of *MET* FISH and *EGFR* FISH status. The low incidence of *MET* gene amplification observed in our study is consistent with previous FISH studies showing that *MET* amplification is a rare event in NSCLC, occurring in 3% to 7% of patients.<sup>33-35</sup>

Another interesting finding was the association of *MET* gene copy number with tumor stage and grade. This aspect raises the possibility that testing *MET* genomic status in tumor biopsies col-

lected at the time of primary diagnosis could not be reliable to predict *MET* gene status in a tumor progressing after an initial treatment.

The second biomarker evaluated in this study was *EGFR*. Recently, a large meta-analysis showed that *EGFR* expression was not a prognostic factor in NSCLC.<sup>13</sup> Three studies evaluated the prognostic impact of *EGFR* gene copy number determined by FISH, and all showed no association with patient survival.<sup>22-24</sup> Results from large phase III trials comparing an EGFR-TKI versus placebo, the only trials able to discriminate between prognostic versus predictive value of a biomarker, clearly showed that *EGFR* gene copy number represents a predictive factor.<sup>8-9</sup> Nevertheless, large phase III trials comparing EGFR-TKI plus chemotherapy versus chemotherapy alone, also suggested that *EGFR* increased gene copy number could contribute to a better prognosis.<sup>11-12</sup> Because of the confusion among clinicians on the role of *EGFR* gene gain, and because in previous study we evaluated the prognostic impact of *EGFR* FISH using a different scoring system,<sup>22</sup> in this study we analyzed *EGFR* gene copy number using the same criteria described for selection of patients candidate for EGFR-TKI therapy.<sup>5</sup> Our results, obtained in a large patient population, demonstrated that *EGFR* gene copy number has a limited effect on patient survival. Although *EGFR* amplified patients had a trend for shorter survival, the difference with non-*EGFR*-amplified individuals was not significant and the whole group of *EGFR* FISH-positive patients had similar survival than *EGFR* FISH-negative patients, confirming that *EGFR* gene gain is not a favorable prognostic factor.

In conclusion, this study shows that *MET* increased gene copy number is an independent prognostic factor in surgically resected NSCLC, supporting anti-*MET* therapeutic strategies in selected patients. *EGFR* gene gain has no prognostic role in NSCLC, further supporting its role as predictive factor for improved survival in NSCLC patients exposed to EGFR-TKIs.

#### AUTHORS' DISCLOSURES OF POTENTIAL CONFLICTS OF INTEREST

The author(s) indicated no potential conflicts of interest.

#### AUTHOR CONTRIBUTIONS

**Conception and design:** Federico Cappuzzo, Marileila Varella-Garcia  
**Financial support:** Federico Cappuzzo, Armando Santoro, Marileila Varella-Garcia

**Administrative support:** Federico Cappuzzo  
**Provision of study materials or patients:** Federico Cappuzzo, Antonio Marchetti, Annarita Destro, Luigi Terracciano, Massimo Roncalli, Marco Alloisio  
**Collection and assembly of data:** Federico Cappuzzo, Margaret Skokan, Sujatha Gajapathy, Lara Felicioni, Maela Del Grammastro, Maria Grazia Sciarrotta, Fiamma Buttitta, Matteo Incarbone, Luca Toschi, Giovanna Finocchiaro

**Data analysis and interpretation:** Federico Cappuzzo, Elisa Rossi, Marileila Varella-Garcia  
**Manuscript writing:** Federico Cappuzzo, Marileila Varella-Garcia  
**Final approval of manuscript:** Federico Cappuzzo, Antonio Marchetti, Margaret Skokan, Elisa Rossi, Sujatha Gajapathy, Maela Del Grammastro, Maria Grazia Sciarrotta, Fiamma Buttitta, Matteo Incarbone, Luca Toschi, Giovanna Finocchiaro, Annarita Destro, Luigi Terracciano, Massimo Roncalli, Marco Alloisio, Armando Santoro, Marileila Varella-Garcia

**REFERENCES**

1. Cohen S: Isolation of mouse submaxillary gland protein accelerating incisor eruption and eyelid opening in the new-born animal. *J Biol Chem* 237: 1555-1562, 1962
2. Pirker R, Szczesna A, von Pawel J, et al: FLEX: A randomized, multicenter, phase III study of cetuximab in combination with cisplatin/vinorelbine (CV) versus CV alone in the first-line treatment of patients with advanced non-small cell lung cancer (NSCLC). *J Clin Oncol* 26:6s, 2008 (suppl; abstr 3)
3. Shepherd FA, Rodrigues Pereira J, et al: Erlotinib in previously treated non-small cell lung cancer. *N Engl J Med* 353:123-132, 2005
4. Paez JG, Jänne PA, Lee JC, et al: EGFR mutations in lung cancer: Correlation with clinical response to gefitinib therapy. *Science* 304:1497-1500, 2004
5. Cappuzzo F, Hirsch FR, Rossi E, et al: Epidermal growth factor receptor gene and protein and gefitinib sensitivity in non-small cell lung cancer. *J Natl Cancer Inst* 97:643-655, 2005
6. Miller VA, Kris MG, Shah N, et al: Bronchioloalveolar pathologic subtype and smoking history predict sensitivity to gefitinib in advanced non-small-cell lung cancer. *J Clin Oncol* 22:1103-1109, 2004
7. Tsao MS, Sakurada A, Cutz JC, et al: Erlotinib in lung cancer - molecular and clinical predictors of outcome. *N Engl J Med* 353:133-144, 2005
8. Hirsch FR, Varella-Garcia M, Bunn PA Jr, et al: Molecular predictors of outcome with gefitinib in a phase III placebo-controlled study in advanced non-small-cell lung cancer. *J Clin Oncol* 24:5034-5042, 2006
9. Zhu CQ, da Cunha Santos G, Ding K, et al: Role of KRAS and EGFR as biomarkers of response to erlotinib in National Cancer Institute of Canada clinical trial group study BR21. *J Clin Oncol* 26:4268-4275, 2008
10. Hirsch FR, Herbst RS, Olsen C, et al: Increased EGFR gene copy number detected by fluorescent in situ hybridization predicts outcome in non-small-cell lung cancer patients treated with cetuximab and chemotherapy. *J Clin Oncol* 26:3351-3357, 2008
11. Hirsch FR, Varella-Garcia M, Bunn PA, et al: Fluorescence in situ hybridization (FISH) subgroup analysis of TRIBUTE: A phase III trial of erlotinib plus carboplatin and paclitaxel in NSCLC. *Clin Cancer Res* 14:6317-6373, 2008
12. Bell DW, Lynch TJ, Haserlat SM, et al: Epidermal growth factor receptor mutations and gene amplification in non-small-cell lung cancer: Molecular analysis of the IDEAL/INTACT gefitinib trials. *J Clin Oncol* 23:8081-8092, 2005
13. Nakamura H, Kawasaki N, Taguchi M, et al: Survival impact of epidermal growth factor receptor overexpression in patients with non-small cell lung cancer: A meta-analysis. *Thorax* 61:98-99, 2006
14. Veale D, Kerr N, Gibson GJ, et al: The relationship of quantitative epidermal growth factor recep-

- tor expression in non-small cell lung cancer to long term survival. *Br J Cancer* 68:162-165, 1993
15. Pastorino U, Andreola S, Tagliabue E, et al: Immunocytochemical markers in stage I lung cancer: Relevance to prognosis. *J Clin Oncol* 15:2858-2865, 1997
16. Rusch V, Klimstra D, Venkatraman E, et al: Overexpression of the epidermal growth factor receptor and its ligand transforming growth factor alpha is frequent in resectable non-small cell lung cancer but does not predict tumor progression. *Clin Cancer Res* 3:515-522, 1997
17. Fontanini G, Laurentiis M, Vignati S, et al: Evaluation of epidermal growth factor-related growth factors and receptors and of neoangiogenesis in completely resected stage I-IIIA non-small-cell lung cancer: Amphiregulin and microvessel count are independent prognostic indicators of survival. *Clin Cancer Res* 4:241-249, 1998
18. Pfeiffer P, Nexo E, Bentzen SM, et al: Enzyme-linked immunosorbent assay of epidermal growth factor receptor in lung cancer: Comparisons with immunohistochemistry, clinicopathological features and prognosis. *Br J Cancer* 78:96-99, 1998
19. Fu XL, Zhu XZ, Shi DR, et al: Study of prognostic predictors for non-small cell lung cancer. *Lung Cancer* 23:143-152, 1999
20. Selvaggi G, Novello S, Torri V, et al: Epidermal growth factor receptor overexpression correlates with a poor prognosis in completely resected non-small-cell lung cancer. *Ann Oncol* 15:28-32, 2004
21. Swinson DE, Cox G, O'Byrne KJ: Coexpression of epidermal growth factor receptor with related factors is associated with a poor prognosis in non-small-cell lung cancer. *Br J Cancer* 91:1301-1307, 2004
22. Hirsch FR, Varella-Garcia M, Bunn PA Jr, et al: Epidermal growth factor receptor in non-small-cell lung carcinomas: Correlation between gene copy number and protein expression and impact on prognosis. *J Clin Oncol* 21:3798-3807, 2003
23. Jeon YK, Sung SW, Chung JH, et al: Clinicopathologic features and prognostic implications of epidermal growth factor receptor (EGFR) gene copy number and protein expression in non-small cell lung cancer. *Lung Cancer* 54:387-398, 2006
24. Suzuki S, Dobashi Y, Sakurai H, et al: Protein overexpression and gene amplification of epidermal growth factor receptor in non small cell lung carcinomas: An immunohistochemical and fluorescence in situ hybridization study. *Cancer* 103:1265-1273, 2005
25. Ichimura E, Maeshima A, Nakajima T, et al: Expression of c-met/HGF receptor in human non-small cell lung carcinomas *in vitro* and *in vivo* and its prognostic significance. *Jpn J Cancer Res* 87:1063-1069, 1996
26. Tsao MS, Liu N, Chen JR, et al: Differential expression of Met/hepatocyte growth factor receptor in subtypes of non-small cell lung cancers. *Lung Cancer* 20:1-16, 1998
27. Masuya D, Huang C, Liu D, et al: The tumour-stromal interaction between intratumoral c-Met and stromal hepatocyte growth factor associated with

- tumour growth and prognosis in non-small-cell lung cancer patients. *Br J Cancer* 90:1555-1562, 2004
28. Hara T, Ooi A, Kobayashi M, et al: Amplification of c-myc, K-sam, and c-met in gastric cancers: Detection by fluorescence *in situ* hybridization. *Lab Invest* 78:1143-1153, 1998
29. Miller CT, Lin L, Casper AM, et al: Genomic amplification of MET with boundaries within fragile site FRA7G and upregulation of MET pathways in esophageal adenocarcinoma. *Oncogene* 25:409-418, 2006
30. Samuelson E, Levan K, Adamovic T, et al: Recurrent gene amplifications in human type I endometrial adenocarcinoma detected by fluorescence in situ hybridization. *Cancer Genet Cytogenet* 181:25-30, 2008
31. Birchmeier C, Birchmeier W, Gherardi E, et al: Met, metastasis, motility and more. *Nat Rev Mol Cell Biol* 4:915-925, 2003
32. Lutterbach B, Zeng Q, Davis LJ, et al: Lung cancer cell lines harboring MET gene amplification are dependent on Met for growth and survival. *Cancer Res* 67:2081-2088, 2007
33. Bean J, Brennan C, Shih JY, et al: MET amplification occurs with or without T790M mutations in EGFR mutant lung tumors with acquired resistance to gefitinib or erlotinib. *Proc Natl Acad Sci U S A* 104:20932-20937, 2007
34. Cappuzzo F, Skokan M, Gajapathy S, et al: MET increased gene copy number and primary resistance to gefitinib therapy in never smokers or EGFR FISH positive non-small cell lung cancer (NSCLC) patients. *Ann Oncol* [epub ahead of print on October 3, 2008]
35. Weir BA, Woo MS, Getz G, et al: Characterizing the cancer genome in lung adenocarcinoma. *Nature* 450:893-898, 2007
36. Engelman JA, Zejnullahu K, Mitsudomi T, et al: MET amplification leads to gefitinib resistance in lung cancer by activating ERBB3 signaling. *Science* 316:1039-1043, 2007
37. Marchetti A, Martella C, Felicioni L, et al: EGFR mutations in non-small cell lung cancer: Analysis of a large series of cases and development of a rapid and sensitive method for diagnostic screening with potential implications on pharmacologic treatment. *J Clin Oncol* 23:857-865, 2005
38. Marchetti A, Felicioni L, Buttitta F: Assessing EGFR mutations. *N Engl J Med* 354:526-528, 2006
39. Eberhard DA, Giaccone G, Johnson BE: Biomarkers of response to epidermal growth factor receptor inhibitors in Non-Small-Cell Lung Cancer Working Group: Standardization for use in the clinical trial setting. *J Clin Oncol* 26:983-994, 2008
40. Kaplan EL, Meier P: Nonparametric estimation from incomplete observations. *J Am Stat Assoc* 53:457-481, 1958
41. Kong-Beltran M, Seshagiri S, Zha J, et al: Somatic mutations lead to an oncogenic deletion of met in lung cancer. *Cancer Res* 66:283-289, 2006
42. Bonine-Summers AR, Aakre ME, Brown KA, et al: Epidermal growth factor receptor plays a significant role in hepatocyte growth factor mediated biological

responses in mammary epithelial cells. *Cancer Biol Ther* 4:561-570, 2007

43. Cheng TL, Chang MY, Huang SY, et al: Over-expression of circulating c-met messenger RNA is significantly correlated with nodal stage and early recurrence in non-small cell lung cancer. *Chest* 128:1453-1460, 2005

44. Beau-Faller M, Ruppert AM, Voegeli AC, et al: MET gene copy number in non-small cell lung can-

cer: Molecular analysis in a targeted tyrosine kinase inhibitor naïve cohort. *J Thorac Oncol* 4:331-339, 2008

45. Tokunou M, Niki T, Eguchi K, et al: C-MET expression in myofibroblasts: Role in autocrine activation and prognostic significance in lung adenocarcinoma. *Am J Pathol* 158:1451-1463, 2001

46. Siegfried JM, Weissfeld LA, Singh-Kaw P, et al: Association of immunoreactive hepatocyte

growth factor with poor survival in resectable non-small cell lung cancer. *Cancer Res* 57:433-439, 1997

47. Lo Muzio L, Farina A, Rubini C, et al: Effect of c-Met expression on survival in head and neck squamous cell carcinoma. *Tumour Biol* 27:115-121, 2006

48. Cappuzzo F, Varella-Garcia M, Finocchiaro G, et al: Primary resistance to cetuximab therapy in EGFR FISH-positive colorectal cancer patients. *Br J Cancer* 99:83-89, 2008

---

■ ■ ■

### **Acknowledgment**

We are indebted to the Cytogenetics Core of the University of Colorado Cancer Center (Aurora, CO) and the Chieti University (Italy) for technical assistance.