

Measurement of selective effect of insulin on glucose disposal from labeled glucose oral test minimal model

Chiara Dalla Man, Andrea Caumo, Rita Basu, Robert Rizza, Gianna Toffolo and Claudio Cobelli

Am J Physiol Endocrinol Metab 289:E909-E914, 2005. First published 21 June 2005; doi:10.1152/ajpendo.00299.2004

You might find this additional info useful...

This article cites 13 articles, 10 of which can be accessed free at:

<http://ajpendo.physiology.org/content/289/5/E909.full.html#ref-list-1>

This article has been cited by 9 other HighWire hosted articles, the first 5 are:

Effects of Type 2 Diabetes on Insulin Secretion, Insulin Action, Glucose Effectiveness, and Postprandial Glucose Metabolism

Ananda Basu, Chiara Dalla Man, Rita Basu, Gianna Toffolo, Claudio Cobelli and Robert A. Rizza

Dia Care, May, 2009; 32 (5): 866-872.

[\[Abstract\]](#) [\[Full Text\]](#) [\[PDF\]](#)

Dipeptidyl Peptidase-4 Inhibition by Vildagliptin and the Effect on Insulin Secretion and Action in Response to Meal Ingestion in Type 2 Diabetes

Chiara Dalla Man, Gerlies Bock, Paula D. Giesler, Denise B. Serra, Monica Ligueros Saylan, James E. Foley, Michael Camilleri, Gianna Toffolo, Claudio Cobelli, Robert A. Rizza and Adrian Vella

Dia Care 2009; 32 (1): 14-18.

[\[Abstract\]](#) [\[Full Text\]](#) [\[PDF\]](#)

Use of labeled oral minimal model to measure hepatic insulin sensitivity

Chiara Dalla Man, Gianna Toffolo, Rita Basu, Robert A. Rizza and Claudio Cobelli

Am J Physiol Endocrinol Metab, November 1, 2008; 295 (5): E1152-E1159.

[\[Abstract\]](#) [\[Full Text\]](#) [\[PDF\]](#)

Effect of 2 Years of Testosterone Replacement on Insulin Secretion, Insulin Action, Glucose Effectiveness, Hepatic Insulin Clearance, and Postprandial Glucose Turnover in Elderly Men

Rita Basu, Chiara Dalla Man, Marco Campioni, Ananda Basu, K. Sreekumaran Nair, Michael D. Jensen, Sundeep Khosla, George Klee, Gianna Toffolo, Claudio Cobelli and Robert A. Rizza

Dia Care 2007; 30 (8): 1972-1978.

[\[Abstract\]](#) [\[Full Text\]](#) [\[PDF\]](#)

Assessment of β -cell function in humans, simultaneously with insulin sensitivity and hepatic extraction, from intravenous and oral glucose tests

Claudio Cobelli, Gianna Maria Toffolo, Chiara Dalla Man, Marco Campioni, Paolo Denti, Andrea Caumo, Peter Butler and Robert Rizza

Am J Physiol Endocrinol Metab, July 1, 2007; 293 (1): E1-E15.

[\[Abstract\]](#) [\[Full Text\]](#) [\[PDF\]](#)

Updated information and services including high resolution figures, can be found at:

<http://ajpendo.physiology.org/content/289/5/E909.full.html>

Additional material and information about *AJP - Endocrinology and Metabolism* can be found at:

<http://www.the-aps.org/publications/ajpendo>

This information is current as of August 23, 2011.

Measurement of selective effect of insulin on glucose disposal from labeled glucose oral test minimal model

Chiara Dalla Man,¹ Andrea Caumo,² Rita Basu,³ Robert Rizza,³ Gianna Toffolo,¹ and Claudio Cobelli¹

¹Department of Information Engineering, University of Padova, Padua; ²San Raffaele Scientific Institute, Milan, Italy; and ³Division of Endocrinology, Diabetes, Metabolism, and Nutrition Department of Internal Medicine, Mayo Clinic and Foundation, Rochester, Minnesota

Submitted 18 July 2004; accepted in final form 14 June 2005

Dalla Man, Chiara, Andrea Caumo, Rita Basu, Robert Rizza, Gianna Toffolo, and Claudio Cobelli. Measurement of selective effect of insulin on glucose disposal from labeled glucose oral test minimal model. *Am J Physiol Endocrinol Metab* 289: E909–E914, 2005. First published June 21, 2005; doi:10.1152/ajpendo.00299.2004.—The oral glucose minimal model (OMM) measures insulin sensitivity (S_I) and the glucose rate of appearance (R_a) of ingested glucose in the presence of physiological changes of insulin and glucose concentrations. However, S_I of OMM measures the overall effect of insulin on glucose utilization and glucose production. In this study we show that, by adding a tracer to the oral dose, e.g., of a meal, and by using the labeled version of OMM, OMM* to interpret the data, one can measure the selective effect of insulin on glucose disposal, S_I^* . Eighty-eight individuals underwent both a triple-tracer meal with the tracer-to-tracee clamp technique, providing a model-independent reference of the R_a of ingested glucose ($R_{a\text{ meal}}^{\text{ref}}$) and an insulin-modified labeled intravenous glucose tolerance test (IVGTT*). We show that OMM* provides not only a reliable means of tracing the R_a of ingested glucose ($R_{a\text{ meal}}$) but also accurately measures S_I^* . We do so by comparing OMM* $R_{a\text{ meal}}$ with the model-independent $R_{a\text{ meal}}^{\text{ref}}$ provided by the tracer-to-tracee clamp technique, while OMM* S_I^* is compared with both S_I^{ref} , obtained by using as known input $R_{a\text{ meal}}^{\text{ref}}$ and with S_I^* measured during IVGTT*.

insulin action; glucose utilization; tracer-to-tracee activity clamp; intravenous glucose tolerance test; oral glucose tolerance test

THE ORAL MINIMAL MODEL METHOD can simultaneously measure insulin secretion, insulin action, and the rate of glucose appearance after meal or glucose ingestion (3, 6, 11, 12). In particular, the oral glucose minimal model (OMM) measures insulin sensitivity (S_I), as well as the rate of appearance of ingested glucose ($R_{a\text{ meal}}$) (11, 12). One limitation of the S_I index measured by OMM is that S_I is a composite index, i.e., it measures the overall effect of insulin to stimulate glucose uptake and inhibit glucose production. At least in theory, the individual contribution of insulin's ability to stimulate glucose uptake can be measured if a glucose tracer is added to the meal. If so, labeled glucose oral data, analyzed by means of an oral labeled minimal model, can provide an estimate of S_I (S_I^*) reflecting glucose disposal only. This would be reminiscent of the approach that previously led our group to propose the labeled intravenous glucose tolerance test (IVGTT) and its interpretation with the labeled minimal model (10, 14).

The aim of this study is to develop and validate an oral labeled minimal model (OMM*). We show that OMM* provides reliable estimates of disposal S_I^* and $R_{a\text{ meal}}$. To validate

OMM*, we took advantage of a unique data set (11) containing 88 individuals who underwent a triple-tracer labeled meal, as well as a labeled IVGTT (IVGTT*). The triple-tracer labeled meal, thanks to the use of the tracer-to-tracee clamp technique, provided a model-independent reference for the appearance rate of ingested glucose ($R_{a\text{ meal}}^{\text{ref}}$) (4). $R_{a\text{ meal}}^{\text{ref}}$ was then used as a known input of a model of labeled glucose kinetics. This model, denoted as reference tracer model (RM*), was identified from labeled meal data and yielded a reference measure of disposal insulin sensitivity, S_I^{ref} . OMM* is validated by comparing OMM*-based estimates of S_I^* and $R_{a\text{ meal}}$ to S_I^{ref} and $R_{a\text{ meal}}^{\text{ref}}$, respectively. Validation is further strengthened by comparing OMM* S_I^* with the IVGTT* S_I^* measured in the same subjects with the traditional labeled minimal model.

METHODS

Data

The database consisted of 88 normal subjects [46 males and 42 females: age = 58 ± 2 yr (range 19–87); body wt = 77 ± 2 kg (range 53–129); BMI = 26.71 ± 0.1 kg/m² (range 20–35); fasting glucose = 92.07 ± 0.7 mg/dl (range 77.29–105.12)] who received both a triple-tracer mixed meal and an IVGTT*.

Labeled mixed meal. The triple-tracer mixed meal (10 kcal/kg; 45% carbohydrate, 15% protein, 40% fat) contained 1 ± 0.02 g/kg glucose. The meal was labeled with [1-¹³C]glucose (G^*), thus allowing us to derive the exogenous, i.e., coming from the meal, glucose (G_{meal}) as

$$G_{\text{meal}} = G^* \cdot \left[1 + \frac{1}{Z_{\text{meal}}} \right] \quad (1)$$

where Z_{meal} is the tracer-to-tracee ratio in the meal. Plasma samples were collected at $-120, -30, -20, -10, 0, 5, 10, 15, 20, 30, 40, 50, 60, 75, 90, 120, 150, 180, 210, 240, 260, 280, 300, 360,$ and 420 min.

Figure 1, A–C, left, shows mean glucose, exogenous glucose, and insulin plasma concentration curves. Beginning at time 0, [6-³H]glucose was infused intravenously at a variable rate, mimicking $R_{a\text{ meal}}$. [6,6-²H₂]glucose was also infused as part of a separate protocol. Because the ratio in plasma between [6-³H]glucose and [1-¹³C]glucose was maintained almost constant (Fig. 2A), Steele's model provided an essentially model-independent estimate of the R_a of ingested tracer ($R_{a\text{ meal}}^{\text{ref}}$) (4); total $R_{a\text{ meal}}^{\text{ref}}$ was then calculated from $R_{a\text{ meal}}^{\text{ref}}$ (Fig. 2B) as

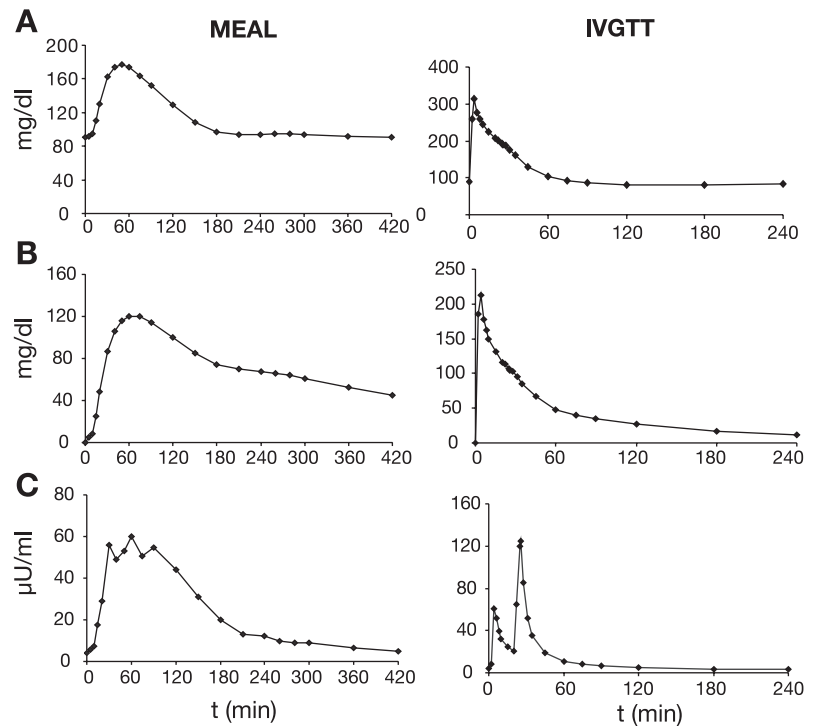
$$R_{a\text{ meal}}^{\text{ref}} = R_{a\text{ meal}}^{\text{ref}} \cdot \left[1 + \frac{1}{Z_{\text{meal}}} \right] \quad (2)$$

Labeled intravenous glucose tolerance test. The IVGTT* consisted of a 330 mg/kg glucose bolus at time 0 labeled with [6,6-²H₂]glucose,

Address for reprint requests and other correspondence: C. Cobelli, Dept. of Information Engineering, Univ. of Padova, Via Gradenigo 6/B, I-35131 Padua, Italy (e-mail: cobelli@dei.unipd.it).

The costs of publication of this article were defrayed in part by the payment of page charges. The article must therefore be hereby marked "advertisement" in accordance with 18 U.S.C. Section 1734 solely to indicate this fact.

Fig. 1. Mean concentration of plasma glucose, exogenous glucose, and insulin during meal (left) and intravenous glucose tolerance test (IVGTT; right) in normal subjects ($n = 88$).



followed by a short insulin infusion of 0.02 U/kg between 20 and 25 min. Plasma samples were collected at $-120, -30, -20, -10, 0, 2, 4, 6, 8, 10, 15, 20, 22, 25, 26, 28, 31, 35, 45, 60, 75, 90, 120, 180,$ and 240 min. Figure 1, A–C, right, shows mean glucose, exogenous glucose, and insulin plasma concentration.

Models

Oral minimal models. For the sake of clarity, a brief description of the “cold” (i.e., unlabeled) oral minimal models (11, 12) precedes the presentation of the new “hot” (i.e., labeled) OMM*. This is done not only because the two oral minimal models hinge on the same mono-compartmental structure of glucose kinetics, but also because they share the exogenous glucose input, i.e., $R_{a\text{ meal}}$. Denoting by G the total plasma glucose concentration, the rate of glucose disappearance (R_d) and the net hepatic glucose balance (NHGB) (Fig. 3, left) model equation following Ref. 5 is

$$\dot{G}(t) = \frac{-R_d(t) + \text{NHGB}(t) + R_{a\text{ meal}}(t)}{V}; \quad G(0) = G_b \quad (3)$$

where V is the distribution volume.

By assuming for R_d and NHGB the functional description proposed in Ref. 5, one obtains OMM:

$$\begin{cases} \dot{G}(t) = -[S_G + X(t)] \cdot G(t) + S_G \cdot G_b + \frac{R_{a\text{ meal}}(\alpha, t)}{V} & G(0) = G_b \\ \dot{X}(t) = -p_2 \cdot X(t) + p_3 \cdot [I(t) - I_b] & X(0) = 0 \end{cases} \quad (4)$$

where S_G is fractional (i.e., per unit distribution volume) glucose effectiveness measuring glucose ability per se to promote glucose disposal and inhibit NHGB, I is plasma insulin concentration, X is insulin action on glucose disposal and production, with p_2 and p_3 rate constants describing its dynamics and magnitude; b denotes basal values. $R_{a\text{ meal}}$ is described as a piecewise-linear function with known break point t_i and unknown amplitude α_i :

$$R_{a\text{ meal}}(\alpha, t) = \begin{cases} \alpha_i - \alpha_{i-1} & \text{per } t_{i-1} \leq t \leq t_i \quad i = 1 \dots 8 \\ 0 & \text{otherwise} \end{cases} \quad (5)$$

with α denoting $[\alpha_1, \alpha_2, \dots, \alpha_8]^T$.

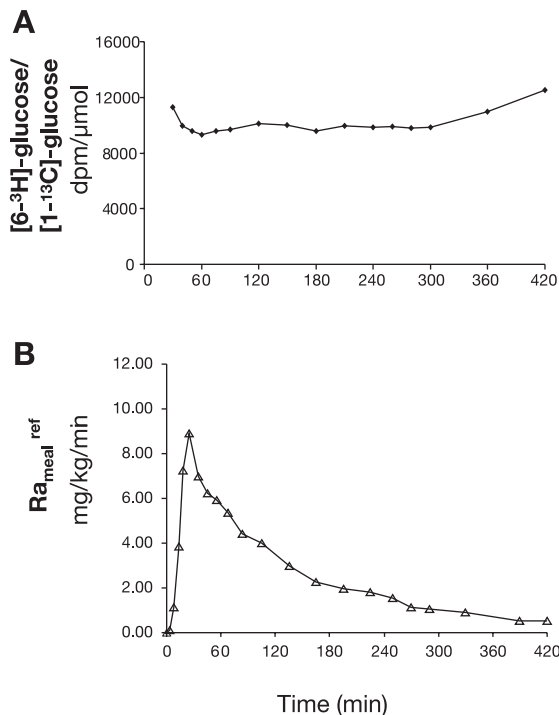


Fig. 2. Clamped tracer-to-tracee ratio $[6\text{-}^3\text{H}]\text{glucose}/[1\text{-}^{13}\text{C}]\text{glucose}$ (A) and model-independent reference of the rate of appearance of tracer glucose ($R_{a\text{ meal}}^{\text{ref}}$; B).

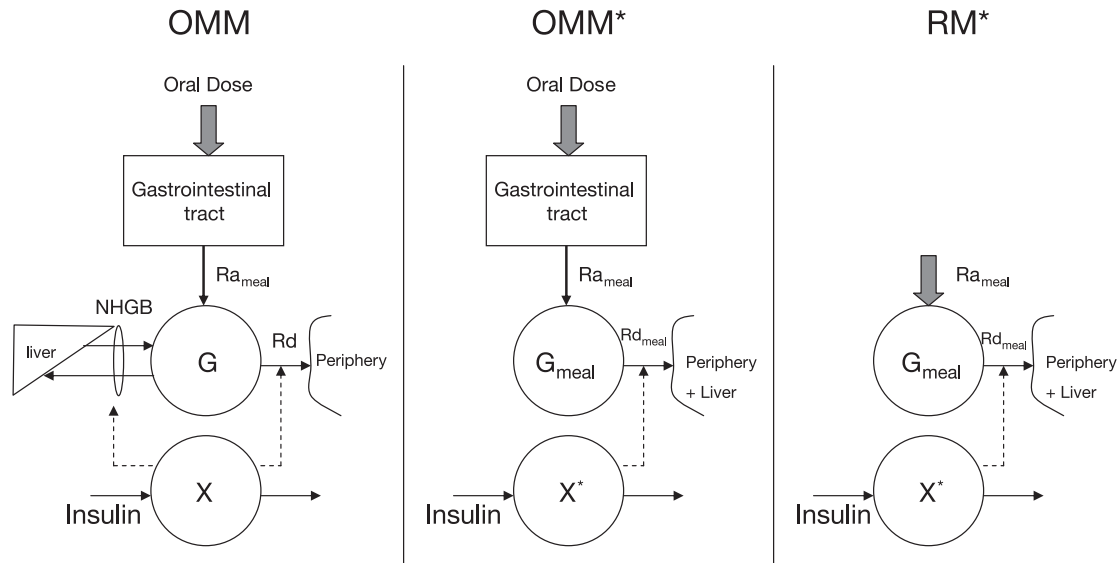


Fig. 3. *Left*: oral minimal model (OMM). *Middle*: labeled oral minimal model (OMM*). *Right*: reference-labeled model (RM*). In OMM and OMM*, $R_{a\text{ meal}}$ is described with a parametric model, which must be identified from the data. In RM*, input is model independent $R_{a\text{ meal}}^{\text{ref}}$, reconstructed by tracer-to-tracee clamp technique.

S_1 is given by

$$S_1 = \frac{p_3}{p_2} \cdot V \text{ (dl} \cdot \text{kg}^{-1} \cdot \text{min}^{-1} \text{ per } \mu\text{U/ml)} \quad (6)$$

Labeled oral minimal model. OMM is unable to distinguish the individual contribution of glucose production and disposal. To overcome this limitation, a glucose tracer is administered orally and unlabeled glucose and plasma concentrations of the glucose tracer are measured. OMM* relies on G_{meal} (eq. 1), and model equation is

$$\dot{G}_{\text{meal}}(t) = \frac{-R_{d\text{ meal}}(t) + R_{a\text{ meal}}(t)}{V^*}; \quad G_{\text{meal}}(0) = 0 \quad (7)$$

where $R_{d\text{ meal}}$ is the R_d of G_{meal} . By assuming for $R_{d\text{ meal}}$ the same functional description proposed previously (10) and for $R_{a\text{ meal}}$ the parametric description of Eq. 5, one obtains OMM* (Fig. 3, middle). Model equations are

$$\begin{cases} \dot{G}_{\text{meal}}(t) = -[S_G^* + X^*(t)] \cdot G_{\text{meal}}(t) + \frac{R_{a\text{ meal}}(\alpha, t)}{V^*} & G_{\text{meal}}(0) = 0 \\ \dot{X}^*(t) = -p_2^* \cdot X^*(t) + p_3^* \cdot [I(t) - I_b] & X^*(0) = 0 \end{cases} \quad (8)$$

where S_G^* is fractional (per unit distribution volume) glucose effectiveness measuring glucose ability per se to promote glucose disposal and X^* insulin action on glucose disposal with p_2^* and p_3^* rate constants describing its dynamics and magnitude, respectively. OMM* estimates $R_{a\text{ meal}}$ together with S_1 on glucose disposal, with S_1^* defined as:

$$S_1^* = \frac{p_3^*}{p_2^*} \cdot V \text{ (dl} \cdot \text{kg}^{-1} \cdot \text{min}^{-1} \text{ per } \mu\text{U/ml)} \quad (9)$$

Because OMM* and OMM share $R_{a\text{ meal}}$, the two models were identified simultaneously (see *Identification*).

Reference-labeled model. The validation of OMM* estimates of $R_{a\text{ meal}}$ and S_1^* was accomplished by using the following rationale. As mentioned in *Data*, during the labeled meal, two additional tracers were infused intravenously. In particular, $[6\text{-}^3\text{H}]$ glucose was infused to clamp the ratio between concentrations in plasma of $[6\text{-}^3\text{H}]$ glucose and ingested glucose tracer. This allowed us to derive reliable and virtually model-independent estimates of $R_{a\text{ meal}}$ (4). This estimate,

denoted $R_{a\text{ meal}}^{\text{ref}}$, was used not only as a reference with which OMM* estimate of $R_{a\text{ meal}}$ was compared but also as a known input of a model with the same structure of OMM* (Fig. 3, right):

$$\dot{G}_{\text{meal}}(t) = \frac{-R_{d\text{ meal}}^{\text{ref}}(t) + R_{a\text{ meal}}^{\text{ref}}(t)}{V^{*\text{ref}}}; \quad G_{\text{meal}}(0) = 0 \quad (10)$$

which becomes

$$\begin{cases} \dot{G}_{\text{meal}}(t) = -[S_G^{*\text{ref}} + X^{*\text{ref}}(t)] \cdot G_{\text{meal}}(t) + \frac{R_{a\text{ meal}}^{\text{ref}}(t)}{V^{*\text{ref}}} & G_{\text{meal}}(0) = 0 \\ \dot{X}^{*\text{ref}}(t) = p_2^{*\text{ref}} \cdot X^{*\text{ref}}(t) + p_3^{*\text{ref}} \cdot [I(t) - I_b] & X^{*\text{ref}}(0) = 0 \end{cases} \quad (11)$$

By identifying this model, denoted as reference-labeled model (RM*), from G_{meal} and insulin data we were able to obtain reference values for OMM* parameters (indicated by ^{ref}), in particular for S_1^* (see *Identification*). Comparison between $S_1^{*\text{ref}}$, estimated with RM*, and S_1^* , provided by OMM*, allowed OMM* validation.

IVGTT minimal models.* IVGTT* data were interpreted with the classic single-compartment IVMM (5) and with the labeled two-compartment minimal models (IVMM*) (14), thus obtaining an estimate of S_1 and S_1^* in the same subjects. This, in addition to providing a one-to-one comparison of IVGTT* S_1^* vs. OMM* S_1^* , allows us to examine the relationship between S_1 and S_1^* in IVGTT and meal.

Identification

Identifiability. Because OMM* (like OMM) is a priori nonidentifiable, the a priori knowledge necessary for its identification was obtained from RM*. OMM* was thus identified by fixing V^* and S_G^* to the mean values obtained with RM*, i.e., $V^* = V^{*\text{ref}}$, $S_G^* = S_G^{*\text{ref}}$. Mean values can safely be used because they are normally distributed (see RESULTS). At variance with OMM, where a Bayesian prior on p_2 was needed to improve numerical identifiability, OMM* takes advantage of the fact that it shares $R_{a\text{ meal}}$ with OMM. The simultaneous identification of OMM* and OMM from two measurements (G_{meal} and G) relaxes the necessity of using Bayesian priors for p_2 and p_2^* . A constraint (11, 12) was imposed to guarantee that the area under the estimated $R_{a\text{ meal}}$ equals the total amount of ingested glucose, D , multiplied by the fraction that is actually absorbed, f . Because f -values estimated with RM* were not normally distributed (RESULTS), f was

Table 1. Parameter estimates of RM*, OMM*, and OMM (simultaneously identified), OMM (separately identified), IVMM*, and IVMM

	S_G, min^{-1}	$S_I, 10^{-4} \text{ dl}\cdot\text{kg}^{-1}\cdot\text{min}^{-1}$ per $\mu\text{U/ml}$	$V, \text{dl/kg}$	p_2, min^{-1}
RM*	0.0118 ± 0.0004 (25)	9.24 ± 0.63 (22)	1.60 ± 0.04 (8)	0.039 ± 0.004 (36)
OMM*	0.0118^\dagger	9.64 ± 0.80 (12)	1.60^\dagger	0.043 ± 0.005 (46)
OMM	0.025^\dagger	12.24 ± 0.68 (8)	1.45^\dagger	0.011 ± 0.004 (21)
OMM (separately identified)	0.025^\dagger	11.68 ± 0.3 (7)	1.45^\dagger	0.011 ± 0.005 (15)
IVMM*	0.0073 ± 0.0003 (21)	11.59 ± 0.88 (15)	1.08 ± 0.03 (14)	0.101 ± 0.007 (35)
IVMM	0.019 ± 0.0004 (32)	6.91 ± 0.46 (12)	1.62 ± 0.02 (5)	0.033 ± 0.002 (16)

Values are means \pm SE, with their precision in parentheses (% coefficient of variation). RM*, reference tracer model; OMM*, labeled version of oral glucose minimal model; OMM, oral glucose minimal model; IVMM*, labeled two-compartment intravenous minimal model; IVMM, intravenous minimal model. † Parameters fixed to reference values.

fixed to the median of RM*: $f = f^{\text{m-ref}}$. Finally, oral tracer measurements provided information as to when $R_{a \text{ meal}}$ began to rise in each subject. If tracer concentration is zero up to time t_i and is different from zero at time t_{i+1} , then one can safely assume that $R_{a \text{ meal}}$ is zero up to t_i .

Parameter estimation. All models were numerically identified by nonlinear least squares (7, 9), as implemented in SAAM II [Simulation Analysis and Modeling software (2)]. Measurement error was assumed to be independent, gaussian, with zero mean and known constant standard deviation. Insulin concentration is the model-forcing function and is assumed to be known without error.

Statistical Analysis.

Data are presented as means \pm SE. Two-sample comparisons were done by Wilcoxon signed rank test, and a Shapiro-Wilk test was used to verify whether parameters were normally distributed (significance level set to 5%). Pearson's correlation was used to evaluate univariate correlation.

RESULTS

Parameter estimates of RM*, OMM*, and OMM (simultaneously identified), IVMM*, and IVMM are shown in Table 1 (means \pm SE) with their precision.

RM*. RM* parameters were estimated with good precision, and their mean values are $S_G^{\text{ref}} = 0.0118 \text{ min}^{-1}$, $V^{\text{ref}} = 1.60 \text{ dl/kg}$, $p_2^{\text{ref}} = 0.039 \text{ min}^{-1}$, and $S_I^{\text{ref}} = 9.24 \times 10^{-4} \text{ dl}\cdot\text{kg}^{-1}\cdot\text{min}^{-1}$ per $\mu\text{U/ml}$. The fraction of ingested glucose that reaches plasma, calculated as the ratio between area under $R_{a \text{ meal}}^{\text{ref}}$ and ingested dose, was $f^{\text{ref}} = 0.89$. Parameters S_G^{ref} , V^{ref} were normally distributed (P values not significant by Shapiro-Wilk test), although f^{ref} was not (median value $f^{\text{m-ref}} = 0.90$).

OMM* and OMM. The mean profile of $R_{a \text{ meal}}$, reconstructed by simultaneously identifying OMM* and OMM, is shown in Fig. 4. Of note, $R_{a \text{ meal}}$ was virtually superimposable (data not shown) to that reconstructed by identifying OMM alone (11).

OMM* and OMM parameters were $S_I^* = 9.64 \times 10^{-4} \text{ dl}\cdot\text{kg}^{-1}\cdot\text{min}^{-1}$ per $\mu\text{U/ml}$, $p_2^* = 0.043 \text{ min}^{-1}$, $S_I = 12.24 \times 10^{-4} \text{ dl}\cdot\text{kg}^{-1}\cdot\text{min}^{-1}$ per $\mu\text{U/ml}$, and $p_2 = 0.011 \text{ min}^{-1}$. This estimate of S_I was not significantly different from that obtained in Eq. 11 by fitting OMM to total glucose concentration alone, where we found $S_I = 11.68 \times 10^{-4} \text{ dl}\cdot\text{kg}^{-1}\cdot\text{min}^{-1}$ per $\mu\text{U/ml}$. The correlation between the two sets of S_I estimates is very high: $r = 0.96$, $P < 0.001$.

IVMM* and IVMM. S_I^* and S_I were 11.59 and $6.91 \times 10^{-4} \text{ dl}\cdot\text{kg}^{-1}\cdot\text{min}^{-1}$ per $\mu\text{U/ml}$, respectively.

OMM* vs. RM*. A good agreement was found between OMM* $R_{a \text{ meal}}$ and $R_{a \text{ meal}}^{\text{ref}}$ (Fig. 4). S_I^* provided by OMM* and S_I^{ref} were well correlated ($r = 0.80$, $P < 0.0001$; Fig. 5A), and their mean values were not significantly different (9.64 vs. $9.24 \times 10^{-4} \text{ dl}\cdot\text{kg}^{-1}\cdot\text{min}^{-1}$ per $\mu\text{U/ml}$). To quantify how sensitive the OMM/OMM* estimate of S_I and S_I^* to the assumptions made on V , V^* , S_G , S_G^* , and f were, we used multiple regression analysis between the percentage deviation of S_I (S_I^*) and the percentage deviation of V , S_G , and f (V^* , S_G^* , f). We found that the percentage deviations of f and S_G explain the deviation in S_I estimate (0.685 , $P < 0.0001$), although the deviation of V doesn't contribute significantly to the regression. Conversely, the percentage deviations of f , S_G^* , and V^* explain the deviation in S_I^* estimate (0.747 , $P < 0.0001$).

OMM* vs. IVMM*. Correlation between IVMM* and OMM* S_I^* was significant ($r = 0.67$, $P < 0.0001$; Fig. 5B) but their values were significantly different (9.64 vs. $11.59 \times 10^{-4} \text{ dl}\cdot\text{kg}^{-1}\cdot\text{min}^{-1}$ per $\mu\text{U/ml}$).

S_I vs S_I^* . The relationship between S_I and S_I^* is different during meal and IVGTT. With the oral minimal models, one had 12.24 vs. $9.64 \times 10^{-4} \text{ dl}\cdot\text{kg}^{-1}\cdot\text{min}^{-1}$ per $\mu\text{U/ml}$, with $S_I > S_I^*$ in 81% of the subjects, although for the IVGTT S_I was lower than S_I^* on average ($S_I = 6.91$ vs. $S_I^* = 11.59 \times 10^{-4} \text{ dl}\cdot\text{kg}^{-1}\cdot\text{min}^{-1}$ per $\mu\text{U/ml}$) and was so in $\sim 90\%$ of the subjects.

DISCUSSION

The OMM method was developed to measure S_I under physiological conditions, e.g., a meal or OGTT (12). In addition,

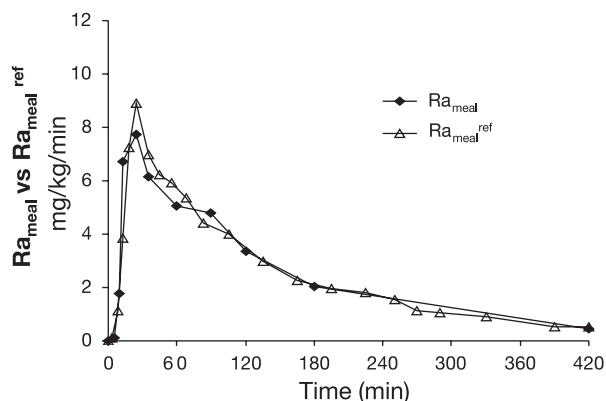


Fig. 4. $R_{a \text{ meal}}$ reconstructed by OMM* is shown against $R_{a \text{ meal}}^{\text{ref}}$ of Fig. 2B.

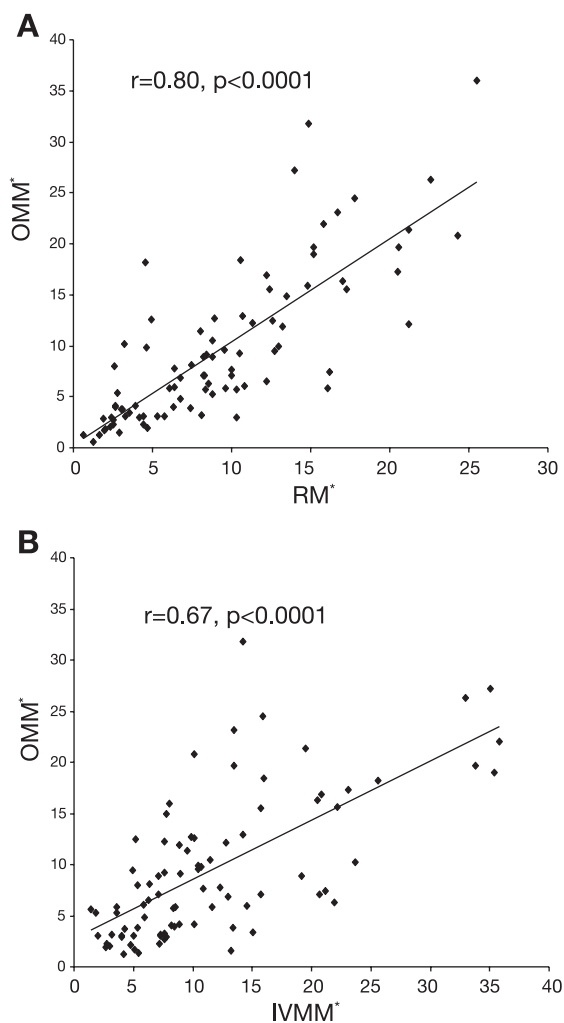


Fig. 5. OMM* insulin sensitivity (S_I^*): correlation with S_I^* estimated from RM^* (A) and from $IVMM^*$ (B).

tion, OMM can simultaneously estimate the R_a in plasma of the ingested glucose, $R_{a\ meal}$. The validity of OMM S_I and $R_{a\ meal}$ was recently established (11). However, OMM S_I , although it is an extremely useful index, is a composite measure of insulin action on both glucose production and disposal. Our goal here was to develop a method that specifically measured the ability of insulin to stimulate glucose disposal in physiological conditions. To do this, a tracer was added to the meal, and a labeled OMM (OMM*) was developed. The validity of OMM* S_I^* and $R_{a\ meal}$ was assessed by comparing these values to reference values S_I^{*ref} and $R_{a\ meal}^{ref}$, obtained in the same 88 subjects by means of multiple tracer infusions (4). In addition, S_I^* calculated with OMM* was compared with that obtained from a labeled insulin-modified IVGTT (IVGTT*) performed in the same 88 individuals.

The $R_{a\ meal}$ profile obtained with OMM* was very similar to $R_{a\ meal}^{ref}$ (Fig. 4). This is an important result, because due to the experimental conditions (i.e., a tracer-to-tracee clamp), $R_{a\ meal}^{ref}$ provided an essentially model-independent measure of the glucose R_a . S_I^* obtained by OMM* was also very similar to reference values: $S_I^* = 9.64 \pm 0.80 \times 10^{-4}$ vs. $S_I^{*ref} = 9.24 \pm 0.63 \times 10^{-4}$ $dl \cdot kg^{-1} \cdot min^{-1}$ per $\mu U/ml$, with a satisfactory correlation between the two ($r = 0.80$, $P < 0.0001$; Fig. 5A).

However, from Fig. 5, differences exist at the individual level, thus indicating that OMM* is more robust in population rather than individual studies.

The addition of a tracer to the meal, besides allowing segregation of exogenous component, G_{meal} , of plasma glucose concentration G , and thus estimation of insulin sensitivity on glucose disposal, also has beneficial effects on the numerical identifiability of OMM* (and OMM). In fact, OMM*, which is based on G_{meal} data, shares $R_{a\ meal}$ with OMM, which is based on G data. Thus, for its identification, the unlabeled plasma glucose concentration data G can also be exploited by simultaneously identifying OMM. By doing so, the number of available data doubles, although the number of parameters increases by only two (i.e., from 10 parameters with OMM* alone to 12 with both OMM* and OMM). The improvement in numerical identifiability allowed estimation of p_2^* and p_2 in each individual without having to resort to Bayesian priors as in Refs. 11 and 12. However, parameters V , V^* , S_G , S_G^* , and f still need to be fixed to population values derived from the reference model. To quantify how sensitive the OMM/OMM* estimate of S_I and S_I^* to the assumptions made on these parameters were, we investigated, by multiple regression analysis, the relationship between their percentage deviation and that of S_I and S_I^* . We found that the percentage deviations of f and S_G explain the deviation in S_I estimate (0.685, $P < 0.0001$), whereas the deviation of V doesn't contribute significantly to the regression. The percentage deviations of f , S_G^* , and V^* from the fixed values explain the deviation in S_I^* estimate (0.747, $P < 0.0001$).

It is of interest to compare S_I^* with OMM* and IVGTT*. The two estimates showed a significant correlation, $r = 0.67$, $P < 0.0001$ (Fig. 5B), although the latter measure was significantly higher: 11.59 vs. 9.64×10^{-4} $dl \cdot kg^{-1} \cdot min^{-1}$ per $\mu U/ml$.

The relationship between the cold and hot estimates of S_I in IVGTT vs. meal is worth commenting on. The IVGTT results observed in the present 88 subjects are consistent with those previously reported in smaller-size studies (8, 10, 14). S_I was lower than S_I^* in ~90% of the subjects: $S_I = 6.91 \times 10^{-4}$ vs. $S_I^* = 11.59 \times 10^{-4}$ $dl \cdot kg^{-1} \cdot min^{-1}$ per $\mu U/ml$. This relationship is clearly unphysiological, because S_I measures the overall effect of insulin on both glucose disposal and production, whereas S_I^* measures only the effect of insulin on disposal; by definition, S_I should be equal to or greater than S_I^* . Possible reasons for this unexpected pattern have been discussed in Ref. 8. The relationship between S_I and S_I^* improves dramatically with the OMM, $S_I = 12.24 \times 10^{-4}$ vs. $S_I^* = 9.64 \times 10^{-4}$ $dl \cdot kg^{-1} \cdot min^{-1}$ per $\mu U/ml$, with $S_I > S_I^*$ in 81% of the subjects. However, S_I was still less than S_I^* in 19% of the subjects. It is likely that the improved performance of the oral minimal models stems from the fact that the minimal model assumptions are more tenable during the gentle meal than during the massive IVGTT perturbation, particularly those concerning the description of how NHGB is controlled by glucose and insulin, which are embodied in both cold models. However, the finding that S_I^* was greater than S_I in 19% of the subjects also calls for a revision of this functional description for a meal perturbation.

A comment on the relationship between p_2 and p_2^* in IVGTT and meal, as well as on the difference between intravenous and oral values, is also in order. During both IVGTT and meal, p_2

is approximately one-third of p_2^* (Table 1). This means that insulin action on the liver has a slower dynamic than insulin action on glucose utilization, and, in all likelihood, the underlying assumption of the classic minimal model, that insulin action on glucose production has the same dynamics of insulin action on glucose utilization, is probably not entirely correct. Moreover, the difference found in p_2 and p_2^* values during IVGTT and meal can be explained by considering the differences between the two tests. During IVGTT, glucose and insulin explore a wider range of values than during the meal (G: 90–300 vs. 90–170 mg/dl; I: 4–120 vs. 4–60 μ U/ml), thus possibly uncovering some parameter nonlinearities (1, 13).

In conclusion, OMM* provides a means of assessing both $R_{a\text{ meal}}$ and S_I^* after the ingestion of a carbohydrate-containing meal. Because OMM is simultaneously identified, this approach also permits assessment of the overall effect of insulin on glucose production and disposal (S_I). Furthermore, when the labeled and unlabeled oral minimal models are combined with the oral C-peptide minimal model (6, 15), insulin secretion and β -cell function indexes can also be measured at the same time. However, although in the present study good performance of the method was observed in a wide range of glucose tolerance (S_I : $1.52 \div 30.40 \times 10^{-4} \text{ dl} \cdot \text{kg}^{-1} \cdot \text{min}^{-1}$ per μ U/ml), further studies in diabetic individuals with abnormalities in insulin secretion and action of various degrees of severity are needed to better define the domain of validity of the model. Finally, because insulin action appears to be dependent on the pattern of insulin (1, 13), future studies will be required to determine whether the ability of insulin to stimulate glucose uptake and suppress glucose production in the presence of the continuously changing insulin concentrations observed after a meal is the same as that observed in the presence of different insulin profiles (e.g., during a hyperinsulinemic clamp).

GRANTS

This study was partially supported by National Institutes of Health Grants EB-01975, AG-14383, and RR-00585, and by Ministero dell'Università e della Ricerca Scientifica.

REFERENCES

1. Alzaid AA, Dineen SF, Turk DJ, Caumo A, Cobelli C, and Rizza RA. Assessment of insulin action and glucose effectiveness in diabetic and nondiabetic humans. *J Clin Invest* 94: 2341–2348, 1994.
2. Barrett PH, Bell BM, Cobelli C, Golde H, Schumitzky A, Vicini P, and Foster DM. SAAM II: Simulation, Analysis, and Modeling Software for tracer and pharmacokinetic studies. *Metabolism* 47: 484–492, 1998.
3. Basu R, Breda E, Oberg A, Powell C, Dalla Man C, Arora P, Toffolo G, Cobelli C, and Rizza R. Mechanisms of age-associated deterioration in glucose tolerance: contribution of alterations in insulin secretion, action and clearance. *Diabetes* 52: 1738–1748, 2003.
4. Basu R, Di Camillo B, Toffolo G, Basu A, Shah P, Vella A, Rizza R, and Cobelli C. Use of a novel triple-tracer approach to assess postprandial glucose metabolism. *Am J Physiol Endocrinol Metab* 284: E55–E69, 2003.
5. Bergman RN, Ider YZ, Bowden CR, and Cobelli C. Quantitative estimation of insulin sensitivity. *Am J Physiol Endocrinol Metab Gastrointest Physiol* 236: E667–E677, 1979.
6. Breda E, Cavaghan MK, Toffolo G, Polonsky KS, and Cobelli C. Oral glucose tolerance test minimal model indexes of beta-cell function and insulin sensitivity. *Diabetes* 50: 150–158, 2001.
7. Carson ER, Cobelli C, and Finkelstein L. *The Mathematical Modeling of Endocrine-Metabolic Systems. Model Formulation, Identification and Validation*. New York: Wiley, 1983.
8. Caumo A, Vicini P, Zachwieja JJ, Avogaro A, Yarasheski K, Bier DM, and Cobelli C. Undermodeling affects minimal model indexes: insights from a two-compartment model. *Am J Physiol Endocrinol Metab* 276: E1171–E1193, 1999.
9. Cobelli C, Foster D, and Toffolo G. *Tracer Kinetics in Biomedical Research: From Data to Model*. New York: Kluwer Academic/Plenum, 2000.
10. Cobelli C, Pacini G, Toffolo G, and Sacca L. Estimation of insulin sensitivity and glucose clearance from minimal model: new insights from labeled IVGTT. *Am J Physiol Endocrinol Metab* 250: E591–E598, 1986.
11. Dalla Man C, Caumo A, Basu R, Rizza R, Toffolo G, and Cobelli C. Minimal model estimation of glucose absorption and insulin sensitivity from oral test: validation with a tracer method. *Am J Physiol Endocrinol Metab* 287: E637–E643, 2004.
12. Dalla Man C, Caumo A, and Cobelli C. The oral glucose minimal model: estimation of insulin sensitivity from a meal test. *IEEE Trans Biomed Eng* 49: 419–429, 2002.
13. Doeden B and Rizza R. Use of a variable insulin infusion to assess insulin action in obesity: defects in both the kinetics and amplitude of response. *J Clin Endocrinol Metab* 64: 902–908, 1987.
14. Vicini P, Caumo A, and Cobelli C. The hot IVGTT two-compartment minimal model: indexes of glucose effectiveness and insulin sensitivity. *Am J Physiol Endocrinol Metab* 273: E1024–E1032, 1997.
15. Toffolo G, Breda E, Cavaghan MK, Ehrmann DA, Polonsky KS, and Cobelli C. Quantitative indexes of β -cell function during graded up&down glucose infusion from C-peptide minimal models. *Am J Physiol Endocrinol Metab* 280: E2–E10, 2001.