

Papers

Incidence and risk factors for non-alcoholic steatohepatitis: prospective study of 5408 women enrolled in Italian tamoxifen chemoprevention trial

Savino Bruno, Patrick Maisonneuve, Paola Castellana, Nicole Rotmensz, Sonia Rossi, Marco Maggioni, Marcello Persico, Alberto Colombo, Franco Monasterolo, Donata Casadei-Giunchi, Franco Desiderio, Tommaso Stroffolini, Virgilio Sacchini, Andrea Decensi, Umberto Veronesi, the Italian Tamoxifen Study Group

Abstract

Objective To assess the incidence, cofactors, and excess risk of development of non-alcoholic fatty liver disease, including non-alcoholic steatohepatitis, attributable to tamoxifen in women.

Design Prospective, randomised, double blind, placebo controlled trial.

Setting and participants 5408 healthy women who had had hysterectomies, recruited into the Italian tamoxifen chemoprevention trial from 58 centres in Italy.

Intervention Women were randomly assigned to receive tamoxifen (20 mg daily) or placebo for five years.

Main outcome measure Development of non-alcoholic fatty liver disease in all women with normal baseline liver function who showed at least two elevations of alanine aminotransferase (≥ 1.5 times upper limit of normal) over a six month period.

Results During follow up, 64 women met the predefined criteria: 12 tested positive for hepatitis C virus, and the remaining 52 were suspected of having developed non-alcoholic fatty liver disease (34 tamoxifen, 18 placebo)—hazard ratio = 2.0 (95% confidence interval 1.1 to 3.5; $P = 0.04$). In all 52 women ultrasonography confirmed the presence of fatty liver. Other factors associated with the development of non-alcoholic fatty liver disease included overweight (2.4, 1.2 to 4.8), obesity (3.6, 1.7 to 7.6), hypercholesterolaemia (3.4, 1.4 to 7.8), and arterial hypertension (2.0, 1.0 to 3.8). Twenty women had liver biopsies: 15 were diagnosed as having mild to moderate steatohepatitis (12 tamoxifen, 3 placebo), and five had fatty liver alone (1 tamoxifen, 4 placebo). No clinical, biochemical, ultrasonic, or histological signs suggestive of progression to cirrhosis were observed after a median follow up of 8.7 years.

Conclusions Tamoxifen was associated with higher risk of development of non-alcoholic steatohepatitis only in overweight and obese women with features of metabolic syndrome, but the disease, in both the tamoxifen and the placebo group, after 10 years of follow up seems to be indolent.

Introduction

Tamoxifen is a well known antiestrogen used for the hormone treatment of oestrogen receptor positive breast cancer, and its efficacy in preventing breast cancer in women at high risk has been recently recognised. It is associated with an increased risk of

endometrial cancer and other adverse reactions,¹ including the development of non-alcoholic fatty liver and non-alcoholic steatohepatitis.²⁻⁴ We aimed to evaluate the incidence of, potential risk factors for, and excess risk attributable to tamoxifen in non-alcoholic fatty liver diseases in a large cohort of women who had had hysterectomies and were originally enrolled in the Italian tamoxifen chemoprevention randomised trial.

Methods

The Italian tamoxifen chemoprevention trial included healthy women aged 35 to 70 who had had a total hysterectomy in order to avoid the associated risk of endometrial cancer.^{5,6} The study started in October 1992, and recruitment ended in 1997. Women were randomly assigned in a double blind manner to receive tamoxifen (20 mg daily) or placebo for five years. Women with severe concurrent illness were excluded from randomisation. At baseline, women had a thorough physical examination and blood testing, and a complete history was taken. Follow up included a physical examination every six months and blood testing and mammography every 12 months.⁶

Design of the study on incidence of non-alcoholic fatty liver disease

In 1992, in the absence of information about liver toxicity of tamoxifen, we included a surveillance programme in the Italian trial with the aim of identifying and assessing the onset of acute or chronic liver injury.⁶ We suspected development of non-alcoholic fatty liver disease in all women with normal baseline transaminase concentrations and no history of liver enzyme alterations who developed chronic unexplained hypertransaminasaemia defined as multiple elevations of alanine aminotransferase ≥ 1.5 times the normal upper limit over a six month period. We chose this arbitrary criterion to justify the morbidity and to limit the number of false positive liver biopsies in women at normal risk.⁷ For each woman identified, we collected detailed information on previous liver function tests, hepatitis B or C infection, autoantibodies indicative of autoimmune hepatitis, iron metabolism, alcohol intake, and use of hepatotoxic drugs, in order to exclude recognised causes of liver disease. Women with unexplained hypertransaminasaemia had a ultrasound examina-



Other members of the study group are listed on [bmj.com](#)

Table 1 Distribution of women in Italian tamoxifen chemoprevention trial according to alanine aminotransferase concentrations and hepatitis B or C virus profile

Results	Total (n=5408)	Placebo (n=2708)	Tamoxifen (n=2700)	P value*
High ALT at baseline (>ULN):	321 (5.9%)	161 (5.9%)	160 (5.9%)	
Normal ALT during follow up	223	114	109	Reference
Single elevation of ALT during follow up ($\geq 1.5 \times \text{ULN}$)	52	29	23	0.644
Multiple elevations of ALT during follow up ($\geq 1.5 \times \text{ULN}$)	46	18	28	0.148
Normal ALT at baseline:	5087	2547	2540	
Normal ALT during follow up	4853	2433	2420	Reference
Single elevation of ALT during follow up ($\geq 1.5 \times \text{ULN}$)	170	92	78	0.312
Multiple elevations of ALT during follow up ($\geq 1.5 \times \text{ULN}$)	64	22	42	0.016
Positive for hepatitis B/C virus or antinuclear antibody	12	4	8	0.265
Possible non-alcoholic fatty liver disease	52	18	34	0.036

ALT=alanine aminotransferase; ULN=upper limit of normal.

*Fisher's exact test.

tion of the liver and were offered liver biopsy for final diagnosis. Both procedures were done by operators blind to the treatment allocation. We invited all women with suspected non-alcoholic fatty liver disease to a repeat physical examination, blood tests, and ultrasonography in March 2004, and those who had had biopsies were invited to a repeat procedure.

Statistical analysis

We used Fisher's exact test to assess statistical differences in the frequency of the outcomes among women in the different study groups. We used the Kaplan-Meier method to assess the cumulative incidence of events reported during follow up and the log-rank test to compare the frequency of events between groups. We assessed the independent effect of multiple factors on the development of events during the trial by using Cox proportional hazards regression. We based all analyses on assigned treatment (intention to treat).

Results

From 1992 to 1997, 5408 women (median age 51 years) who were well and had had hysterectomies were randomised to receive tamoxifen (n=2708) or placebo (n=2700) for five years.⁵ Three hundred and twenty one (5.9%) women had alanine aminotransferase above the normal upper limit at baseline but were considered eligible to enter the trial. Of these, 223 maintained alanine aminotransferase <1.5 times the normal upper limit during intervention, 52 had a concentration ≥ 1.5 times the normal upper limit at a single visit, and 46 had such a concentration on two or more occasions. Of the 5087 women with normal alanine aminotransferase at baseline, 4853 maintained normal concentrations during intervention, 170 had a single concentration ≥ 1.5 times the normal upper limit during intervention, and 64 had two or more results ≥ 1.5 times the normal upper limit over at least six months (table 1). Of these 64 women, 12 tested positive for hepatitis C virus. The remaining 52 women, who fulfilled our criteria, were invited to have a liver biopsy for final diagnosis. In all cases ultrasonic findings were consistent with the presence of fatty liver.

Women with high alanine aminotransferase at baseline were heavier, had a higher body mass index, and more often had diabetes than women with normal concentrations at baseline and during follow up ($P < 0.0001$). A similar proportion of women in these two groups had moderate to severe hypercholesterolaemia or hypertension normalised by treatment. Among women with normal alanine aminotransferase at baseline, development of

suspected non-alcoholic fatty liver disease was associated with baseline hypercholesterolaemia (> 6.5 mmol/l) ($P = 0.005$) and hypertension ($P = 0.15$) (table 2).

The mean weight of the 52 women with suspected non-alcoholic fatty liver disease was 71.5 kg at randomisation and 74.4 kg at the first elevation of alanine aminotransferase ($P < 0.0001$). During the intervention, five women (two placebo, three tamoxifen) developed acute hepatitis (aminotransferase ≥ 10 times normal upper limit); four tested positive for hepatitis C, and for one (on placebo) the cause remained unknown.

Liver biopsies

Twenty women (13 tamoxifen, 7 placebo) had liver biopsy: 15 had steatohepatitis (12 tamoxifen, 3 placebo), and 5 had fatty liver (1 tamoxifen, 4 placebo). The positive predictive value for non-alcoholic steatohepatitis was 92% in the tamoxifen group and 43% in the placebo group. The mean weight of the 15 women with steatohepatitis was 70.2 kg at randomisation and 73.5 kg at the time of first elevation of alanine aminotransferase ($P = 0.015$), whereas the mean weight of the five women with fatty liver remained stable (69.2 kg at randomisation, 69.8 kg at first alanine aminotransferase elevation; $P = 0.68$). The women who refused biopsy did not differ in any of the considered characteristics from those who agreed to have the procedure (table 2). Six of the 15 women diagnosed as having non-alcoholic steatohepatitis had a mild liver biopsy score according to Brunt,⁸ and nine had a moderate score; 10 had grade 1 fibrosis, and five had grade 2 fibrosis, but no severe fibrosis occurred.

Three additional women with elevated alanine aminotransferase at baseline had liver biopsy on the advice of their family doctor or local hepatologist. All received tamoxifen and fulfilled our criteria for suspected non-alcoholic fatty liver disease. The first woman was obese, had diabetes, and was diagnosed as having liver cirrhosis. However, her low platelet count (105 000/mm³), prolonged prothrombin time, and aspartate:alanine aminotransferase ratio > 1 before enrolment suggested the presence of pre-existing cirrhosis. Of the two remaining women, one had moderate liver fibrosis and the other had severe fibrosis.

Cumulative incidence of suspected non-alcoholic fatty liver disease

Suspicion of non-alcoholic fatty liver disease was more common in the tamoxifen group (n=34) than in the placebo group (n=18) (log rank $P = 0.017$) (figure). This excess was, however, limited to the first two years of intervention (tamoxifen 21, placebo 7), and no excess was apparent thereafter (tamoxifen 13,

Table 2 Baseline characteristics of women in Italian tamoxifen chemoprevention trial

Characteristic	Normal ALT at baseline					
	High ALT at baseline	Normal ALT during follow up	Single elevation of ALT ($\geq 1.5 \times \text{ULN}$)	Multiple elevations of ALT ($\geq 1.5 \times \text{ULN}$)		
				HBV/HCV/ANA(+)	NAFLD	
				Suspected*	Confirmed†	
All participants	321	4853	170	12	52	20
Tamoxifen group	160	2420	78	8	34	13
Placebo group	161	2433	92	4	18	7
Median age (years):						
All participants	51	51	51	54	51	50
Tamoxifen	52	51	50	54	51	50
Placebo	50	52	51	54	51	49
Median weight (kg):						
All participants	70	64	69	63	70	70
Tamoxifen	70	65	67	60	70	69
Placebo	67	64	70	73	71	72
Median body mass index (kg/m^2):						
All participants	27.0	25.0	27.1	26.0	28.1	27.3
Tamoxifen	27.6	25.0	26.6	26.0	28.2	28.0
Placebo	26.3	25.0	27.7	25.3	26.7	25.9
Diabetes (No (%)):						
All participants	17 (5.3)	89 (1.8)	6 (3.5)	–	3 (5.8)	1 (5.0)
Tamoxifen	11 (6.9)	48 (2.0)	2 (2.6)	–	0	0
Placebo	6 (3.7)	41 (1.7)	4 (4.3)	–	3 (16.7)	1 (14.3)
Median cholesterol (mmol/l):						
All participants	5.8	5.9	5.8	6.2	6.2	6.5
Tamoxifen	5.7	5.9	5.7	6.2	6.0	6.4
Placebo	5.9	5.9	5.8	6.1	6.6	6.6
Cholesterol 6.5–7.8 mmol/l (No (%)):						
All participants	75 (23.4)	1202 (24.8)	23 (13.5)	4 (33.3)	14 (26.9)	7 (35.0)
Tamoxifen	35 (21.9)	607 (25.1)	11 (14.1)	3 (37.5)	8 (23.5)	5 (38.5)
Placebo	40 (24.8)	599 (24.6)	12 (13.0)	1 (25.0)	6 (33.3)	2 (28.6)
Cholesterol >7.8 mmol/l (No (%)):						
All participants	13 (4.0)	244 (5.0)	11 (6.5)	–	7 (13.5)	3 (15.0)
Tamoxifen	6 (3.8)	120 (5.0)	4 (5.1)	–	3 (8.8)	1 (7.7)
Placebo	7 (4.3)	124 (5.1)	7 (7.6)	–	4 (22.2)	2 (28.6)
Hypertension‡ (No (%)):						
All participants	49 (15.3)	623 (12.8)	27 (15.9)	2 (16.7)	13 (25.0)	5 (25.0)
Tamoxifen	31 (19.4)	300 (12.4)	12 (15.4)	1 (12.5)	8 (23.5)	4 (30.7)
Placebo	18 (11.2)	323 (13.3)	15 (16.3)	1 (25.0)	5 (27.8)	1 (14.3)

ALT= alanine aminotransferase; HBV/HCV/ANA(+)=positive for hepatitis B/C virus or antinuclear antibody; NAFLD=non-alcoholic fatty liver disease; ULN=upper limit of normal.

*Women with normal ALT at baseline, with two or more elevations of ALT $\geq 1.5 \times \text{ULN}$ during follow up over at least six months and with no evidence of hepatitis B or C virus infection.

†Diagnosis of NAFLD confirmed by biopsy.

‡Normalised by treatment.

placebo 11). The mean interval between randomisation and first elevation of alanine aminotransferase was 23 (range 6–50) months, similar in both study groups.

Compared with the placebo group, the cumulative incidence of suspected non-alcoholic fatty liver disease after five years in the tamoxifen group was particularly high (3.8%, 95% confidence interval 1.6% to 6.0%) among obese women (body mass index >30), moderately high (2.4%, 1.2% to 3.5%) among overweight women (body mass index 25–30), but similar (0.7%, 0.2% to 1.2%) in women of normal weight (body mass index <25) (figure).

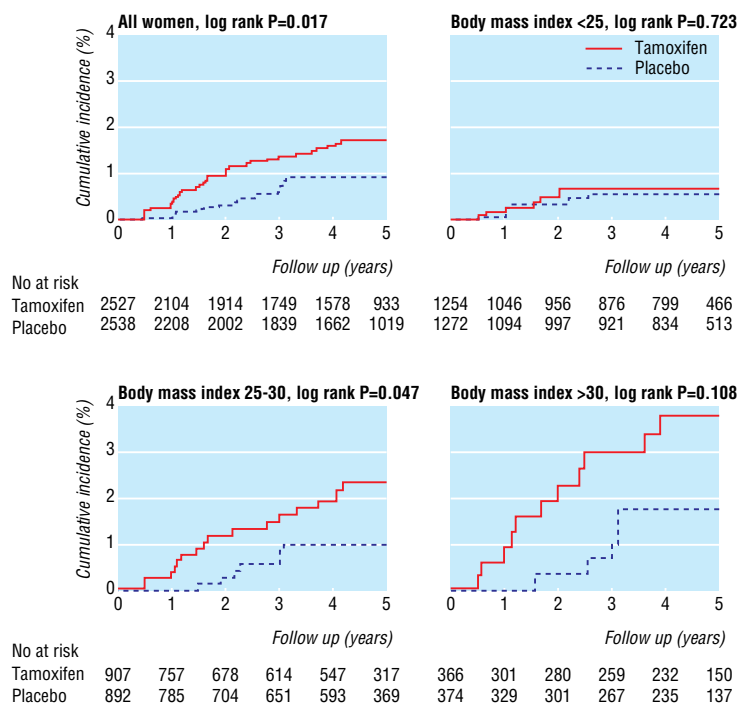
The incidence of suspected non-alcoholic fatty liver disease in women with normal alanine aminotransferase at baseline reached 0.37/100 women/year in the tamoxifen group compared with 0.19/100 in the placebo group. On the basis of the liver biopsy findings, we can reasonably assume that all women in the tamoxifen group and half of the women in the placebo group had steatohepatitis. Therefore, the rate of steatohepatitis would be approximately 0.4/100 women/year in the tamoxifen group compared with 0.1/100 in the placebo group, with an excess rate of steatohepatitis attributed to tamoxifen of 0.3/100 women/year. Similarly, among obese women the rate of

steatohepatitis during the first two years of intervention would be 1.13/100 women/year in the tamoxifen group compared with 0.07/100 in the placebo group (table 3).

Prognostic factors for tamoxifen associated suspected non-alcoholic fatty liver disease

Overall, tamoxifen was associated with an increased risk of developing suspected non-alcoholic fatty liver disease (hazard ratio=2.0, 95% confidence interval 1.1 to 3.5), but the association was restricted to overweight women (2.3, 1.2 to 4.6). Other predictors of non-alcoholic fatty liver disease included overweight (2.4, 1.2 to 4.8), obesity (3.6, 1.7 to 7.6), severe baseline hypercholesterolaemia (>7.8 mmol/l) (3.4, 1.4 to 7.8), and hypertension (2.0, 1.0 to 3.8) (table 4).

Among overweight and obese women, tamoxifen and hypertension were independent significant predictors for the development of suspected non-alcoholic fatty liver disease. Among women in the placebo group, diabetes (10.6, 2.9 to 38.6) and severe hypercholesterolaemia (>7.8 mmol/l) (8.4, 2.5 to 28.3) were associated with an excess risk of developing suspected non-alcoholic fatty liver disease. Among women in the tamoxifen



Cumulative incidence of suspected non-alcoholic fatty liver disease in women with normal alanine aminotransferase at baseline who participated in the Italian tamoxifen chemoprevention trial, according to baseline body mass index

group, only overweight (3.2, 1.3 to 7.9) and obesity (5.4, 2.1 to 14.1) were associated with an excess risk of developing suspected non-alcoholic fatty liver disease (table 4).

Follow up

Women with suspected non-alcoholic fatty liver disease were blindly invited to suspend treatment. During follow up (median 6.9 years, range 2.7-9.9), 22 women had persistently normalised liver enzymes, 14 had fluctuations of transaminases, and 16 maintained high liver enzymes; we found no difference between the tamoxifen and placebo groups. For the 20 women who had biopsies, the mean time between observation of the first elevation of alanine aminotransferase and last visit was 8.7 (range 4.9-10.7) years. In

this group, 11 women had features of the metabolic syndrome (arterial hypertension, obesity, diabetes, dyslipidaemia), two had an abnormal oral glucose tolerance test, and 14 had a homeostasis model assessment test result that suggested insulin resistance; no difference existed between study groups or histological diagnosis of fatty liver or steatohepatitis. No drug treatment for insulin resistance was initiated. During follow up, three of the women who had persistently abnormal alanine aminotransferase had a second liver biopsy after 5-6.5 years. These repeated biopsies showed no histological changes. In March 2004, according to our pre-established clinical, biochemical, and ultrasonic criteria, none of the 52 women had signs of cirrhosis.

Table 3 Patient-years of observation and incidence of suspected non-alcoholic fatty liver disease (women with high alanine aminotransferase at baseline excluded) in Italian tamoxifen chemoprevention trial, according to body mass index and treatment group

	Body mass index (kg/m ²)			Total
	<25	25-30	>30	
Tamoxifen group				
Events/woman-year	7/4670	16/3197	11/1341	34/9208
Rate/100 women/year (%)	0.15	0.50	0.82	0.37
First and second years:				
Events/woman-year	5/2156	9/1506	7/619	21/4281
Rate/100 women/year (%)	0.23	0.60	1.13	0.49
Third to fifth years:				
Events/woman-year	2/2514	7/1691	4/722	13/4927
Rate/100 women/year (%)	0.08	0.41	0.55	0.26
Placebo group				
Events/woman-year	6/4885	7/3329	5/1405	18/9619
Rate/100 women/year (%)	0.12	0.21	0.36	0.19
First and second years:				
Events/woman-year	4/2238	2/1537	1/665	7/4440
Rate/100 women/year (%)	0.18	0.13	0.15	0.16
Third to fifth years:				
Events/woman-year	2/2647	5/1792	4/740	11/5179
Rate/100 women/year (%)	0.08	0.28	0.54	0.21

Table 4 Prognostic factors for development of suspected non-alcoholic fatty liver disease in women with normal baseline transaminase concentrations in Italian tamoxifen chemoprevention trial. Values are hazard ratios (95% confidence intervals) obtained from Cox regression model

Multivariate analysis	All women	Body mass index (kg/m ²)		Treatment arm	
		<25	≥25	Placebo	Tamoxifen
Tamoxifen	2.0 (1.1 to 3.5)	1.2 (0.4 to 3.7)	2.3 (1.2 to 4.6)	–	–
Age	1.0 (0.9 to 1.0)	1.0 (0.9 to 1.0)	1.0 (0.9 to 1.0)	1.0 (0.9 to 1.0)	1.0 (0.9 to 1.0)
Body mass index 25-30	2.4 (1.2 to 4.8)	–	–	1.4 (0.4 to 4.2)	3.2 (1.3 to 7.9)
Body mass index >30	3.6 (1.7 to 7.6)	–	–	2.0 (0.6 to 7.0)	5.4 (2.1 to 14.1)
Diabetes	1.9 (0.6 to 6.2)	–	2.3 (0.7 to 7.6)	10.6 (2.9 to 38.6)	–
Cholesterol 6.5-7.8 mmol/l	1.3 (0.7 to 2.5)	1.4 (0.3 to 5.6)	1.3 (0.6 to 2.7)	2.4 (0.8 to 7.0)	0.9 (0.4 to 2.1)
Cholesterol >7.8 mmol/l	3.4 (1.4 to 7.8)	7.7 (1.9 to 31.8)	2.3 (0.8 to 6.8)	8.4 (2.5 to 28.3)	2.2 (0.6 to 7.4)
Hypertension*	2.0 (1.0 to 3.8)	2.0 (0.4 to 9.2)	2.1 (1.0 to 4.3)	2.0 (0.7 to 6.1)	2.0 (0.9 to 4.5)

*Normalised by treatment.

Discussion

This study showed that treatment with 20 mg of tamoxifen daily for up to five years was associated with an excess risk of developing non-alcoholic steatohepatitis in overweight and obese, but otherwise healthy, women who had had hysterectomies.

Criteria for the identification of non-alcoholic fatty liver disease

Our arbitrary cut-off point of 1.5 times the normal upper limit for alanine aminotransferase with multiple elevations over a six month period could be criticised, as chronic liver disease in both viral infection and fatty liver can occur with lower and intermittent elevations of liver enzymes and also in the absence of abnormal alanine aminotransferase.^{9, 10} As the main objective of our study was to recognise more severe disease and not fatty liver in itself, and in the absence of defined standard, we adopted these criteria to ethically justify offering liver biopsy. Interestingly, the same cut-off point was used in a recent study on the prevalence and severity of non-alcoholic fatty liver diseases, assessed on histological basis, in a large series of Italian patients.¹¹ Furthermore, both Matteoni et al and Ratzu et al reported that aminotransferase concentrations seem to be higher in patients with more severe histological lesions (steatonecrosis and fibrosis) than in those with steatosis alone,^{12, 13} and the prevalence of steatohepatitis and fibrosis at histological examination is low even in high risk patients identified with stringent criteria.¹⁴

We found a single point elevation of alanine aminotransferase in 170 women. Although we cannot exclude the possibility that some of the women who had a single alteration of alanine aminotransferase may have developed non-alcoholic fatty liver disease, we found no difference in the two study arms, indicating no additional risk attributable to tamoxifen.

Cofactors associated with the development of tamoxifen related steatohepatitis

Although tamoxifen might induce hepatic fat content,¹⁵ the mechanism by which it can lead to fibrosis has not yet been identified. Obesity, which has been associated with hepatic steatosis, is an emerging risk factor for progression of fibrosis in many chronic liver diseases.¹⁶ In our study, body mass index was strongly associated with the development of suspected non-alcoholic fatty liver disease. We can speculate that, despite normal liver enzymes at enrolment, obese women had an underlying fatty liver.¹⁷ In this context, our results support the “multiple hit” hypothesis, suggesting that fatty liver is vulnerable to oxidants, with progression to steatohepatitis occurring when a second agent (such as tamoxifen) generates liver cell death, inflammation, and activation of stellate cells with production of fibrosis.

In contrast with previous case reports,^{3, 4} the women in our trial developed only mild to moderate steatohepatitis, and we

found no cirrhosis. This discrepancy can be explained, as we excluded women with a history of abnormal liver enzymes or elevated baseline alanine aminotransferase, which could be attributed to undiagnosed non-alcoholic fatty liver disease.¹⁸ In these women, the incidence of persistently high alanine aminotransferase was significantly greater than in the group with normal liver enzymes at baseline and was slightly higher in the tamoxifen group. Moreover, as steatohepatitis with advanced fibrosis and cirrhosis was confirmed by biopsy in three women on tamoxifen with altered alanine aminotransferase at baseline, we suggest that such women might be at risk of developing more severe disease when receiving tamoxifen.

Natural history of non-alcoholic fatty liver disease

The association of fatty liver with inflammatory changes and fibrosis in women who do not drink alcohol was largely ignored as a clinical disorder until Ludwig et al coined the term non-alcoholic steatohepatitis.¹⁹ Actually, its prevalence in westernised countries is estimated at 15-20% and can be as high as 90% in high risk subgroups.²⁰ In this clinical study we have estimated for the first time the incidence of development of persistent mild elevations of alanine aminotransferase suggestive of non-alcoholic fatty liver disease in a cohort of low risk women receiving placebo. All women had had hysterectomies, satisfied the inclusion criteria, and agreed to participate in a chemoprevention trial, but they were not selected for concurrent illness or for any feature of the metabolic syndrome, which is known to be associated with the risk of developing non-alcoholic fatty liver disease. Our results therefore could be representative of the general Italian female population.

Several retrospective studies have suggested an association between non-alcoholic steatohepatitis and severe liver disease, including hepatocellular carcinoma.²¹ In our study, none of the 15 women with histologically confirmed steatohepatitis has developed clinical, biochemical, or ultrasonic features suggestive of cirrhosis after a median follow up of 8.7 years, and none of the three women who had a repeated biopsy showed histological changes. This suggests that liver fibrosis, when recognised early, remains stable over the years and that progression to cirrhosis is rare, in agreement with other studies.²²⁻²⁴

Conclusion

This prospective study indicates that 20 mg of tamoxifen daily is associated with a higher risk of developing non-alcoholic steatohepatitis in healthy women who had had hysterectomies. The risk is low (hazard ratio = 2.0, 95% confidence interval 1.1 to 3.5), restricted to women with body mass index ≥25, associated with obesity and features of the metabolic syndrome, and limited to the first two years of treatment. During this period, the identification of unexplained abnormal alanine aminotransferase (≥1.5

What is already known on this topic

Non-alcoholic fatty liver disease is very common, although the annual incidence is unknown; major risk factors are obesity, hyperlipidaemia, and diabetes

Tamoxifen has been occasionally associated with the development of non-alcoholic steatohepatitis, characterised by necro-inflammation and fibrosis in addition to fatty liver

What this study adds

In women on placebo, the incidence of persistently abnormal alanine aminotransferase suggestive of non-alcoholic fatty liver disease is low (0.19/100 women/year)

Tamoxifen is associated with a twofold increased risk of developing non-alcoholic steatohepatitis, but only in overweight women

During tamoxifen treatment, unexplained multiple elevations of alanine aminotransferase ≥ 1.5 times the upper normal limit are associated with steatohepatitis, making histological examination unnecessary

times the normal upper limit) in women receiving tamoxifen is associated with development of non-alcoholic fatty liver disease and accurately predicts the presence of fibrosis at histology, reducing the need for liver biopsy. In the placebo group, the annual incidence of persistent mild elevation of alanine aminotransferase associated with ultrasonic and histological features of non-alcoholic fatty liver disease was 0.19/100 women/year. Mild to moderate non-alcoholic steatohepatitis, when recognised at the onset, seems to be indolent in the long term. Our results also apply to women with breast cancer who are eligible to receive tamoxifen treatment.

We thank the Italian women who participated in this study.

Contributors: UV, VS, and SB had the idea for the study. AD and NR managed the study. PM analysed the data. SB, PC, and SR followed up patients with liver disease. MM reviewed all the histological specimens. SB, MP, AC, and TS did liver biopsies. SB and PM drafted the paper. All other authors participated in the accrual of patients and conduct of the study. All authors commented on the paper. SB and PM are the guarantors.

Funding: This study was supported in part by grants from the Italian National Research Council, the Italian Association for Cancer Research, the American-Italian Cancer Foundation, and the Italian League Against Cancer. Competing interests: None declared.

Ethical approval: The trial was approved by the ethical committee of the National Health ministry.

- 1 Fisher B, Costantino JP, Wickerham DL, Redmond CK, Kavanah M, Cronin WM, et al. Tamoxifen for prevention of breast cancer: report of the national surgical adjuvant breast and bowel project P-1 study. *J Natl Cancer Inst* 1998;90:1371-88.
- 2 Pratt DS, Knox TA, Erban J. Tamoxifen induced steatohepatitis. *Ann Intern Med* 1995;123:236.
- 3 Van Hoof M, Rahier J, Horsmans Y. Tamoxifen-induced steatohepatitis. *Ann Intern Med* 1996;124:855-6.
- 4 Oien KA, Moffat D, Curry GW, Dickson J, Habeshaw T, Mills PR, et al. Cirrhosis with steatohepatitis after adjuvant tamoxifen. *Lancet* 1999;353:36-7.
- 5 Veronesi U, Maisonneuve P, Costa A, Sacchini V, Maltoni C, Robertson C, et al. Prevention of breast cancer with tamoxifen: preliminary findings from the Italian randomised trial among hysterectomised women. *Lancet* 1998;352:93-7.
- 6 Veronesi U. Prevention of breast cancer with tamoxifen: the Italian study in hysterectomized women. *The Breast* 1995;4:267-72.
- 7 Van Ness MM, Diehl AM. Is liver biopsy useful in the evaluation of patients with chronically elevated liver enzymes? *Ann Intern Med* 1989;111:473-8.
- 8 Brunt EM, Janney C, Di Bisceglie A, Neuschwander-Tetri B, Bacon B. Non-alcoholic steatohepatitis: a proposal for grading and staging the histological lesions. *Am J Gastroenterol* 1999;94:2467-74.
- 9 Yano E, Tagawa K, Yamaoka K, Mori M. Test validity of periodic liver function tests in a population of Japanese male bank employees. *J Clin Epidemiol* 2001;54:945-51.

- 10 Mofrad P, Contos MJ, Haque M, Sargeant C, Fisher RA, Luketic VA, et al. Clinical and histologic spectrum of non-alcoholic fatty liver disease associated with normal ALT values. *Hepatology* 2003;37:1286-92.
- 11 Marchesini G, Bugianesi E, Forlani G, Cerrelli F, Lenzi M, Manini R, et al. Non-alcoholic fatty liver, steatohepatitis and metabolic syndrome. *Hepatology* 2003;37:917-23.
- 12 Matteoni CA, Younossi ZM, Gramlich T, Bhoparai N, Liu YC, McCollough AJ. Non-alcoholic fatty liver disease; a spectrum of clinical and pathological severity. *Gastroenterology* 1999;116:1413-9.
- 13 Ratziu V, Giral P, Charlotte F, Bruckert E, Thibault V, Theodorou I, et al. Liver fibrosis in overweight patients. *Gastroenterology* 2000;118:1117-23.
- 14 Lainè F, Bendavid G, Moirand R, Tessier S, Perrin N, Guillygomarc'h A, et al. Prediction of liver fibrosis in patients with features of the metabolic syndrome regardless of alcohol consumption. *Hepatology* 2004;39:1639-46.
- 15 Nishino M, Hayakawa K, Nakamura Y, Morimoto T, Mukaiyama S. Effects of tamoxifen on hepatic fat content and the development of hepatic steatosis in patients with breast cancer: high frequency of involvement and rapid reversal after completion of tamoxifen therapy. *Am J Roentgenol* 2003;180:129-34.
- 16 Westin J, Nordlinder H, Lagging M, Norrkans G, Wejstal R. Steatosis accelerates fibrosis development over time in hepatitis C virus genotype 3 infected patients. *J Hepatol* 2002;37:837-42.
- 17 Bellentani S, Sacoccio G, Masutti F, Croce LS, Brandi G, Sasso F, et al. Prevalence of and risk factors for hepatic steatosis in Northern Italy. *Ann Intern Med* 2000;132:112-7.
- 18 Clark JM, Brancati FL, Diehl AM. Non-alcoholic fatty liver disease. *Gastroenterology* 2002;122:1649-57.
- 19 Ludwig J, Viggiano TR, McGill DB, Oh BJ. Non-alcoholic steatohepatitis: Mayo Clinic experiences with a hitherto unnamed disease. *Mayo Clin Proc* 1980;55:434-8.
- 20 Silverman JF, O'Brien KF, Long S, Leggett N, Khazanie PG, Pories WJ, et al. Liver pathology in morbidly obese patients with and without diabetes. *Am J Gastroenterol* 1990;85:1345-55.
- 21 Bugianesi E, Leone N, Vanni E, Marchesini G, Brunello F, Crucci P, et al. Expanding the natural history of nonalcoholic steatohepatitis: from cryptogenic cirrhosis to hepatocellular carcinoma. *Gastroenterology* 2002;123:134-40.
- 22 Powell EE, Cooksley GE, Hanson R, Searle J, Halliday JW, Powell LW. The natural history of nonalcoholic steatohepatitis: a follow up study of forty-two patients for up to 21 years. *Hepatology* 1990;11:74-80.
- 23 Adams LA, Keach J, Lindor KD, Angulo P. Time course of fibrosis progression in patients with non alcoholic fatty liver disease. *Hepatology* 2003;38:104.
- 24 Charlton M, Kasparova P, Weston S, Lindor K, Maor-Kendler Y, Wiesner RH, et al. Frequency of non-alcoholic steatohepatitis as a cause of advanced liver disease. *Liver Transpl* 2001;7:608-14.

(Accepted 28 January 2005)

doi: 10.1136/bmj.38391.663287.E0

Liver Unit, Azienda Ospedaliera Fatebenefratelli e Ophthalmico, Corso di Porta Nuova 23, 20121 Milan, Italy
Savino Bruno *director*
Sonia Rossi *lecturer*

Division of Epidemiology and Biostatistics, European Institute of Oncology, Milan
Patrick Maisonneuve *director, Epidemiology Unit*
Nicole Rotmensz *director, Data Quality Control Unit*

Chemoprevention Unit, European Institute of Oncology
Andrea Decensi *director*

Breast Department, European Institute of Oncology
Virgilio Sacchini *senior registrar*

European Institute of Oncology
Umberto Veronesi *scientific director*

Department of Internal Medicine, Azienda Ospedaliera San Paolo, University of Milan, Milan
Paola Castellana *lecturer*

Department of Pathology, Azienda Ospedaliera San Paolo
Marco Maggioni *senior registrar*

Department of Internal Medicine 2a, University of Napoli, Naples, Italy
Marcello Persico *associate professor of medicine*

Liver Unit, Azienda Ospedaliera Sant'Anna, Como, Italy
Alberto Colombo *senior registrar*

Casa di Cura Citta' di Bra, Bra, Italy
Franco Monasterolo *senior registrar*

Ospedale GB Morgagni-L. Pierantoni, Forli, Italy
Donata Casadei-Giunchi *deputy director, preventive oncology*

Ospedale Infermi, Rimini, Italy
Franco Desiderio *head of prevention*

Gastroenterology Unit, Ospedale San Giacomo, Rome, Italy
Tommaso Stroffolini *senior registrar*

Correspondence to: S Bruno savino.bruno@fbf.milano.it

Amendment

This is version 2 of the paper. In this version, the incorrect statement that the participating women had had breast cancer has been removed from the abstract and from the introduction, results, and discussion section.