

# INTERNATIONAL CONGRESS 2023

MILAN Italy, 9-13 September

# PROGRAMME

**PA3354 Occupational COPD; ten years' experience from a UK occupational lung disease reporting scheme**  
Ruth Wiggans (Manchester (Greater Manchester), United Kingdom), David Fishwick, Loren Zelic, Rheanna Pereira, Laura Byrne, Melanie Carder, Martie Van Tongeren

**PA3355 Correlation between reduced lung attenuation in quantitative CT imaging and lung function trajectory in World Trade Center (WTC) disaster responders**  
Rafael E. de la Hoz (New York, United States), Jonathan Weber, Raúl San José Estépar, John Doucette, Juan Celedón

**PA3356 Evaluation of Voice Quality in Pulmonary Function Tests Laboratory Technicians**  
Gökçen Ömeroğlu Şimşek (İzmir, Turkey), Melike Yüksel Yavuz, Nejdiye Güngördü

PS-12 in poster area

Session 343

16:00 - 17:30

## Poster session: The bugs in lung transplantation

Disease(s) : Respiratory critical care Interstitial lung diseases Airway diseases

Method(s) : Pulmonary function testing Transplantation Cell and molecular biology Endoscopy and interventional pulmonology Imaging Respiratory intensive care

Tag(s) : Clinical

Chairs : Vicky Gerovasili (Rickmansworth, United Kingdom), Peter Jaksch (wien, Austria)

**PA3357 Microbiological surveillance after lung transplant: focus on fungi**  
Irene Tomarelli (milano, Italy), Filippo Maraz, Valeria Rossetti, Letizia Corinna Morlacchi, Ilaria Righi, Davide Tosi, Marco Mantero, Mario Nosotti, Francesco Blasi

**PA3358 The pleural microbiome in lung transplant recipients and non-transplant patients**  
Carlo Mümmeler (München, Germany), Michael Gerckens, Silvia Gschwendtner, Diego Kauffmann-Guerrero, Katrin Milger, Jürgen Behr, Nikolaus Kneidinger

**PA3359 Treatment of fungal infections in lung transplant recipients: is standard dose adjustment of tacrolimus sufficient?**  
Tanja Zijp (Groningen, Netherlands), Fadia Hadi, Stephan Bakker, Job Van Boven, Tji Gan, Daan Touw

**PA3360 Transmission and persistent SARS-CoV-2 infection in a lung transplant recipient with Molnupiravir-induced hypermutation**  
Bjoern Frye (Freiburg, Germany), Ina Hettich, Vivien Karl, Lena Jaki, Daiana Stolz, Maike Hofmann, Jonas Fuchs

**PA3361 Lung Transplantation for COVID-19-Related Respiratory Failure: 1-year outcome of 29 patients**  
Zsófia Kovacs (Wien, Austria), Peter Jaksch, Konrad Hötzenecker, Gabriella Muraközy

**PA3362 Use of Favipiravir as a Broad-Spectrum Virostatic Drug in Lung Transplant Recipients**  
Andrea Zajacova (Prague, Czech Republic), Eliska Dvorackova, Luis Fernando Casas-Mendez, Ales Brix, Tereza Kotowski, Jan Havlin, Robert Lischke, Libor Fila, Petr Hubacek

**PA3363 Program cell death 1 (PD1) and program cell death ligand 1 (PDL1) expression in pulmonary aspergillosis with and without SARS-CoV-2 virus infection.**  
Shiang-Fen Huang (Taipei, Taiwan), Kun-Ta Chou, Yu-Chi Huang, Hao-Chia Lin, Ping-Feng Wu

**PA3364 Plasma virome dynamics after lung transplantation**  
Victoria Ruiz (Barcelona, Spain), Vicente Pérez-Brocal, Meritxell Boada-Pérez, Berta Saez, Ibai Los-Arcos, Maria Deu, Marta Zapata-Ortega, Judit Sacanell, Alba Santiago, Andrés Moya, Victor Monforte, Cristina Berastegui, Susana Gomez-Olles

**PA3365 The impact of COVID-19 on long term lung function in lung transplant recipients: a single-center retrospective study**  
Brice Touilloux (Fribourg, Switzerland), Matthaios Papadimitriou-Olivgeris, Cédric Bongard, Nahal Mansouri, Foteini Ioakeim, John-David Aubert, Oriol Manuel, Angela Koutsokera, Alessio Casutt

**PA3366 Late Breaking Abstract - Bedside non-invasive radiation-free lung ventilation/perfusion mapping by electrical impedance tomography in lung transplant recipients**  
Vittorio Scaravilli (MILAN, Italy), Jacopo Fumagalli, Valentina Cattaneo, Francesco Damarco, Letizia Morlacchi, Giacomo Grasselli

**PA3367 Late Breaking Abstract - Speckle-tracking right ventricle free wall longitudinal strain: a new non-invasive highly sensitive tool for screening right ventricle function of lung transplant candidates**  
Paolo Meani (Milan, Italy), Vittorio Scaravilli, Silvia Scansani, Letizia Morlacchi, Valeria Rossetti, Marco Vicenzi, Gloria Turconi, Valeria Musso, Amedeo Guzzardella, Mario Nosotti, Francesco Blasi, Giacomo Grasselli

**PA3368 Late Breaking Abstract - High burden of early complications in outcome of lung transplantation for non-cystic fibrosis bronchiectasis**  
Sixtine Decaux (Paris, France), Antoine Roux, Hervé Mal, Matthieu Glorion, Sandra De Miranda, Edouard Sage, Vincent Bunel, Yves Castier, Arnaud Roussel, Philippe Montravers, Pierre Mordant, Jonathan Messika



EUROPEAN RESPIRATORY *journal*

FLAGSHIP SCIENTIFIC JOURNAL OF ERS



# Late Breaking Abstract - Speckle-tracking right ventricle free wall longitudinal strain: a new non-invasive highly sensitive tool for screening right ventricle function of lung transplant candidates

Vittorio Scaravilli, Paolo Meani, Silvia Scansani, Letizia Morlacchi, Valeria Rossetti, Marco Vicenzi, Gloria Turconi, Valeria Musso, Amedeo Guzzardella, Mario Nosotti, Francesco Blasi, Giacomo Grasselli

European Respiratory Journal 2023 62: PA3367; DOI: 10.1183/13993003.congress-2023.PA3367

Article

Figures & Data

Info & Metrics

## Abstract

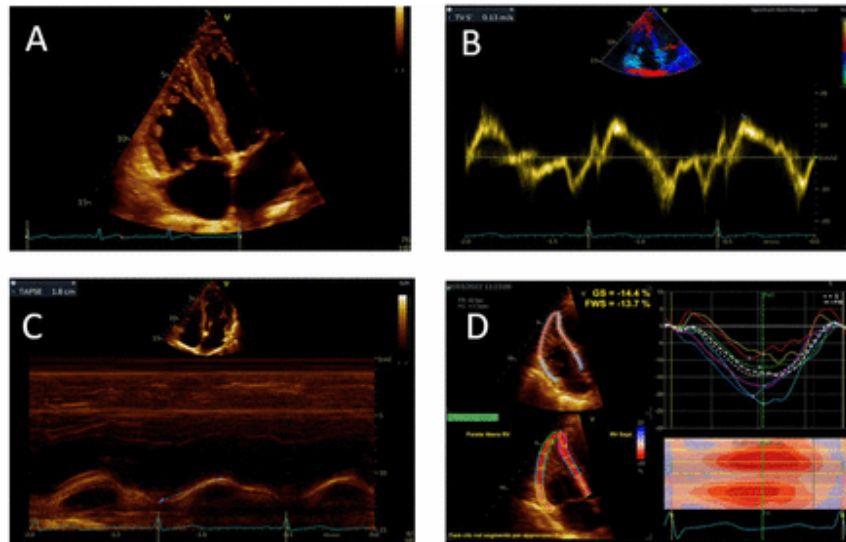
Lung transplant (LUTX) candidates frequently have secondary right ventricular (RV) dysfunction, which standard assessment has poor sensitivity and high logistical footprint. In this single-center prospective observational cohort study on bilateral LUTX patients, the preoperative RV free-wall longitudinal strain (RVFWLS) was compared to conventional RV echocardiographic (tricuspid annular plane excursion – TAPSE, fractional area change – FAC, tricuspid peak annulus systolic velocity - S') and ventriculographic tests. Of the 44 enrolled patients, 10 had poor RV window. Compared to standards, LUTX candidates had statistically significant impaired RVFWLS (20.1% [-22.5% – -17%],  $p < 0.001$ ): 47% having pathologic RVFWLS ( $> -20\%$ ), and 15% normal standard tests, but altered RVFWLS (Fig1).

THANK YOU FOR ACCEPTING COOKIES

You can now hide this message or find out more about cookies.

Hide

More info



**Figure. Example of different measures of RV systolic function in a LUTX candidate, with normal FAC, S', and TAPSE, but altered RVFWLS. The apical RV-focused view is performed (A), the tissue Doppler positive peak systolic wave velocity is normal (0.13 cm/s) (B), the TAPSE by M mode is normal (18 mm)(C), but the RV free wall longitudinal strain by speckle-tracking echocardiography (D) is significantly altered (-13.7%).**

[Download figure](#)

[Open in new tab](#)

[Download powerpoint](#)

RVFWLS identified the highest percentage of impaired RV function (47%) compared to conventional echocardiographic parameters (TAPSE, 32%; S', 27%; FAC, 26%) and ventriculography (15%) (Table1: Conventional RV tests vs. RVFWLS).

[View inline](#)

The RVFWLS provides sensitive, non-invasive, repeatable, and radiation-free RV assessment compared to standard tools in LUTX candidates.

Pulmonary hypertension    Extrapulmonary impact    Circulation

## Footnotes

THANK YOU FOR ACCEPTING COOKIES

You can now hide this message or find out more about cookies.

This is an ERS International Congress abstract. No full-text version is available. Further material to accompany this abstract may be available at [www.ers-education.org](http://www.ers-education.org) (ERS member access only).

Copyright ©the authors 2023

---

## We recommend

Comparing right ventricular function in patients with severe Obstructive Sleep Apnea when treated and not treated with Continuous Positive Airway Pressure  
Amal Saidani et al., European Respiratory Journal, 2023

Right ventricular remodeling in obstructive sleep apnea patients  
Touil Imen et al., European Respiratory Journal, 2020

Sildenafil for treatment of associated pulmonary hypertension in patients with severe COVID-19 pneumonia  
Ifan Qamar et al., European Respiratory Journal

Abnormal right ventricular to pulmonary artery coupling in sickle cell disease  
Tatiana Ballez et al., European Respiratory Journal

Temporal Resolution of Right Ventricle Dysfunction in Patients with Acute Symptomatic Pulmonary Embolism  
Andrea Carolina Perez Figuera et al., European Respiratory Journal, 2020

Ebstein's Anomaly

Author: Pashia et al., Neonatal Network, 2007

Ebstein Anomaly: A Review

Authors: Galea et al., Neonatal Network, 2014

Comparative study in pyrogen test between Conventional and SPF rabbits

WANG, Jin-heng et al., Chinese Journal of Pharmaceutical Analysis

The electrocardiographic diagnosis of myocardial ischemia and infarction: 1917-1942

Philip R. Liebson, Hektoen International Journal

The group A strep crisis: can we do better?

Alastair D Hay et al., The BMJ, 2023

---

Powered by **TREND MD**

I consent to the use of Google Analytics and related cookies across the TrendMD network (widget, website, blog). [Learn more](#)

Yes

No

[← Previous](#)

[^ Back to top](#)

**Vol 62 Issue suppl 67** [Table of Contents](#)

[Table of Contents](#)

[Index by author](#)

---

**THANK YOU FOR ACCEPTING COOKIES**

You can now hide this message or find out more about cookies.