

Redundant essentiality of AsmA-like proteins in *Pseudomonas aeruginosa*

Davide Sposato,¹ Jessica Mercolino,¹ Luisa Torrini,¹ Paola Sperandeo,² Massimiliano Lucidi,^{1,3} Riccardo Alegiani,¹ Ilaria Varone,¹ Giorgia Molesini,¹ Livia Leoni,¹ Giordano Rampioni,^{1,4} Paolo Visca,^{1,3,4} Francesco Imperi^{1,3,4}

AUTHOR AFFILIATIONS See affiliation list on p. 16.

ABSTRACT The outer membrane (OM) is an essential structure of Gram-negative bacteria that provides mechanical strength and protection from large and/or hydrophobic toxic molecules, including many antibiotics. The OM is composed of glycerophospholipids (GPLs) and lipopolysaccharide (LPS) in the inner and outer leaflets, respectively, and hosts integral β -barrel proteins and lipoproteins. While the systems responsible for translocation and insertion of LPS and OM proteins have been elucidated, the mechanism(s) mediating transport of GPLs from the inner membrane to the OM has remained elusive for decades. Very recently, studies performed in *Escherichia coli* proposed a role in this process for AsmA-like proteins that are predicted to share structural features with eukaryotic lipid transporters. In this study, we provide the first systematic investigation of AsmA-like proteins in a bacterium other than *E. coli*, the opportunistic human pathogen *Pseudomonas aeruginosa*. Bioinformatic analyses revealed that *P. aeruginosa* possesses seven AsmA-like proteins. Deletion of *asmA*-like genes in many different combinations, coupled with conditional mutagenesis, revealed that four AsmA-like proteins are redundantly essential for growth and OM integrity in *P. aeruginosa*, including a novel AsmA-like protein (PA4735) that is not present in *E. coli*. Cells depleted of AsmA-like proteins showed severe defects in the OM permeability barrier that were partially rescued by lowering the synthesis or transport of LPS. Since fine balancing of GPL and LPS levels is crucial for OM integrity, this evidence supports the role of AsmA-like proteins in GPL transport toward the OM.

IMPORTANCE Given the importance of the outer membrane (OM) for viability and antibiotic resistance in Gram-negative bacteria, in the last decades, several studies have focused on the characterization of the systems involved in OM biogenesis, which have also been explored as targets for antibacterial drug development. However, the mechanism mediating translocation of glycerophospholipids (GPLs) to the OM remained unknown until recent studies provided evidence that AsmA-like proteins could be responsible for this process. Here, we demonstrate for the first time that AsmA-like proteins are essential and redundant for growth and OM integrity in a Gram-negative bacterium other than the model organism *Escherichia coli* and demonstrate that the human pathogen *Pseudomonas aeruginosa* has an additional essential AsmA-like protein that is not present in *E. coli*, thus expanding the range of AsmA-like proteins that play key functions in Gram-negative bacteria.

KEYWORDS *epaF*, glycerophospholipid transport, outer membrane, PA2708, PA4735, TamA, TamB, YhdP, YdbH

The cell envelope of diderm (Gram-negative) bacteria is composed of two lipid bilayers, separated by an aqueous periplasmic space that contains a thin peptidoglycan cell wall (1). While the cytoplasmic inner membrane (IM) is a bilayer

Editor Craig D. Ellermeier, The University of Iowa, Iowa City, Iowa, USA

Address correspondence to Francesco Imperi, francesco.imperi@uniroma3.it.

Davide Sposato and Jessica Mercolino contributed equally to this article. The author order was determined by their contribution to the article

The authors declare no conflict of interest.

See the funding table on p. 17.

Received 2 November 2023

Accepted 3 January 2024

Published 2 February 2024

Copyright © 2024 Sposato et al. This is an open-access article distributed under the terms of the [Creative Commons Attribution 4.0 International license](https://creativecommons.org/licenses/by/4.0/).

of glycerophospholipids (GPLs), the outer membrane (OM) is an asymmetric bilayer composed of GPLs in the inner leaflet and lipopolysaccharide (LPS) in the outer leaflet, which hosts integral β -barrel proteins (OMPs) and lipoproteins (2). The OM is an essential structure of Gram-negative bacteria, and the asymmetric assembly of its lipid components provides a selective permeability barrier that protects the cell from large and/or hydrophobic toxic molecules such as many antibiotics, partially accounting for the high intrinsic drug resistance of most Gram-negative pathogens (3). Recent studies uncovered that the OM also provides mechanical strength to compensate for the thin cell wall of Gram-negative bacteria (4).

Since the OM is essential and represents a major hurdle to antibiotic success against Gram-negative bacteria, the molecular machineries involved in its biogenesis have been investigated as targets for drug development (5–7). Interfering with OM biogenesis can directly kill bacterial cells or sensitize them to antimicrobials unable to cross a functional OM barrier (8, 9).

OM biogenesis is a complex process that poses several challenges. The biosynthesis of the major OM components takes place in the cytoplasm or at the IM and their transport to and assembly into the OM must be coordinated with cell growth and accomplished in an environment, the periplasm, that is devoid of obvious energy sources (1). Progress has been made in the past two decades in elucidating the molecular mechanisms that enable Gram-negative bacteria to overcome these challenges, leading to the discovery and characterization of dedicated protein machineries that mediate the assembly of individual OM components. OM proteins (OMPs and lipoproteins) are predominantly translocated across the IM in an unfolded state through the general secretory (Sec) system (10, 11). In the periplasm, OMPs are assisted by chaperones and delivered to the β -barrel assembly machinery (Bam), which promotes their final folding and integration into the OM (12, 13). Lipoproteins are matured on the periplasmic side of the IM through the addition of the lipid moiety which anchors them to the IM. Then, OM lipoproteins are detached from the IM and shuttled to the OM by the Lol (localization of lipoproteins) system, which involves a soluble periplasmic protein (LolA) that masks the hydrophobic acyl chains from the aqueous periplasmic environment (14, 15). Intermembrane transport of LPS occurs through the seven-component LPS transport (Lpt) trans-envelope system, which forms a continuous protein bridge that connects the IM and OM and mediates LPS detachment from the IM, transit across the periplasm, and insertion into the outer leaflet of the OM (16, 17).

Despite this wealth of information on OM biogenesis, the mechanism mediating transport across the periplasm of the GPLs necessary for building the inner leaflet of the OM has remained elusive for decades. Several hypotheses have been formulated, including the presence of (i) hemifusion structures formed by the fusion of the IM and OM periplasmic leaflets into a contiguous bilayer crossing the periplasm, (ii) soluble periplasmic carriers, or (iii) proteinaceous tunnels connecting the IM and OM, but none of them has been experimentally confirmed yet (18, 19). This is mainly due to the inability to identify essential genes involved in this process, while it is logical to assume that GPL transport to the OM should be crucial for cell survival. In contrast, a system called Mla (maintenance of OM lipid asymmetry), that is devoted to maintaining OM asymmetry by removing mislocalized GPLs from the outer leaflet of the OM and transporting them back to the IM (retrograde transport), has been identified and characterized in several Gram-negative bacteria (18, 20, 21).

Recently, two independent studies performed in the model organism *Escherichia coli* demonstrated that three members of the AsmA-like protein clan (i.e., TamB, YhdP, and YdbH) are critical for OM integrity and proposed that they could provide a hydrophobic proteinaceous tunnel for GPL transport to the OM (22, 23). Indeed, single or double deletion mutants in these AsmA-like genes displayed impaired growth, cell morphology alterations, enhanced vesiculation, and/or increased antibiotic susceptibility, due to defects in OM integrity, while the triple deletion of *yhdP*, *tamB*, and *ydbH* was synthetically lethal, indicating that these genes are essential but redundant in *E. coli* (22, 23).

Notably, *E. coli* cells impaired in the expression of these essential AsmA-like proteins were also found to accumulate GPLs in the IM (23), suggesting that these proteins are involved in GPL transport toward the OM. This is in line with the results of a previous study showing that the inactivation of the *yhdP* gene was able to reduce the flow of GPLs to the OM and, thus, attenuate the membrane defects of an *E. coli* mutant (*mIaA**) in which the Mla system works in reverse, leading to GPL accumulation in the outer leaflet of the OM, increased flow of GPLs from the IM, and consequently, IM shrinkage (24). Notably, AsmA-like proteins are predicted to have an IM-anchoring N-terminal transmembrane helix (TMH) and a large periplasmic domain with a structure resembling that of the eukaryotic proteins (e.g., Vps13 and Atg2) involved in GPL transport between organelles (25–27).

Overall, this body of evidence strongly supports the role of AsmA-like proteins in GPL transport. However, up to date, the involvement of AsmA-like proteins in GPL transport and OM homeostasis has been systematically investigated only in *E. coli*. To provide further support to the possible role of AsmA-like proteins in the biogenesis of the Gram-negative cell envelope, we analyzed the effect of AsmA-like protein depletion in the opportunistic human pathogen *Pseudomonas aeruginosa*. Here, we confirm that AsmA-like proteins are essential and redundant for growth and OM integrity also in *P. aeruginosa* and provide indirect evidence that supports their role in the transport of GPLs to the OM. We also demonstrate that *P. aeruginosa* has an additional essential AsmA-like protein that is not present in *E. coli*, thus expanding the range of AsmA-like proteins that might play essential role(s) in diderm bacteria.

RESULTS

P. aeruginosa has seven AsmA-like proteins

The possible role of AsmA-like proteins in GPL transport and OM homeostasis has only been investigated in the model organism *E. coli*. This bacterium possesses six AsmA-like proteins (i.e., AsmA, TamB, YhdP, YdbH, YhjG, and YicH), of which TamB, YhdP, and YdbH were found to be essential but redundant for growth and OM integrity (22, 23).

To verify the role of AsmA-like proteins in *P. aeruginosa*, we first searched for homologs of *E. coli* AsmA-like proteins in the *Pseudomonas* Genome Database (<https://pseudomonas.com/>) and for *P. aeruginosa* proteins in the Pfam database that belong to families within the AsmA-like clan. Seven genes encoding AsmA-like proteins were identified in the reference strain *P. aeruginosa* PAO1, all of which are conserved in the *P. aeruginosa* complete genomes deposited in the *Pseudomonas* Genome Database (Table 1). Five of these proteins have homology with *E. coli* proteins, and hereafter, they have been renamed as their putative *E. coli* orthologs, while a homolog of the *E. coli* protein YicH was not identified in *P. aeruginosa*. In addition, *P. aeruginosa* has two other AsmA-like proteins, PA4735 and PA2708, which are not present in *E. coli* (Table 1). The

TABLE 1 AsmA-like proteins in *P. aeruginosa*

<i>P. aeruginosa</i> PAO1 AsmA-like protein (aa)	<i>E. coli</i> homolog (aa)	Identity (%)	Alignment length (aa)	E value	Pfam	% of <i>P. aeruginosa</i> genomes with ortholog ^a
PA2542 (1,221)	TamB (1,259)	25.81	1,259	0.0	PF04357	100 ^b
PA4476 (1,276)	YhdP (1,266)	21.62	1,309	0.0	PF13502/PF13116	100 ^c
PA4879 (688)	YhjG (686)	53.00	666	0.0	PF05170	100
PA5146 (750)	AsmA (617)	17.81	320	1.15E–6	PF05170	100
PA5307 (855)	YdbH (879)	24.49	147	7.13E–5	PF11739	100
PA4735 (1,088)	- ^e	-	-	-	PF05359	100
PA2708 (361)	-	-	-	-	PF05359	100 ^d

^aPutative orthologs were retrieved from 257 complete genomes according to the *Pseudomonas* Ortholog Groups of the *Pseudomonas* Genome Database (<https://pseudomonas.com/>).

^bThe ortholog of the *P. aeruginosa* strain PADK2_Cf510 is probably a pseudogene.

^cThe ortholog of the *P. aeruginosa* strain 2192 is probably a pseudogene.

^dThe orthologs of the *P. aeruginosa* strains 2192; BWH034 and MRSN 20176 are probably pseudogenes.

^eThe symbol "-" indicates the absence of a homolog in *E. coli*.

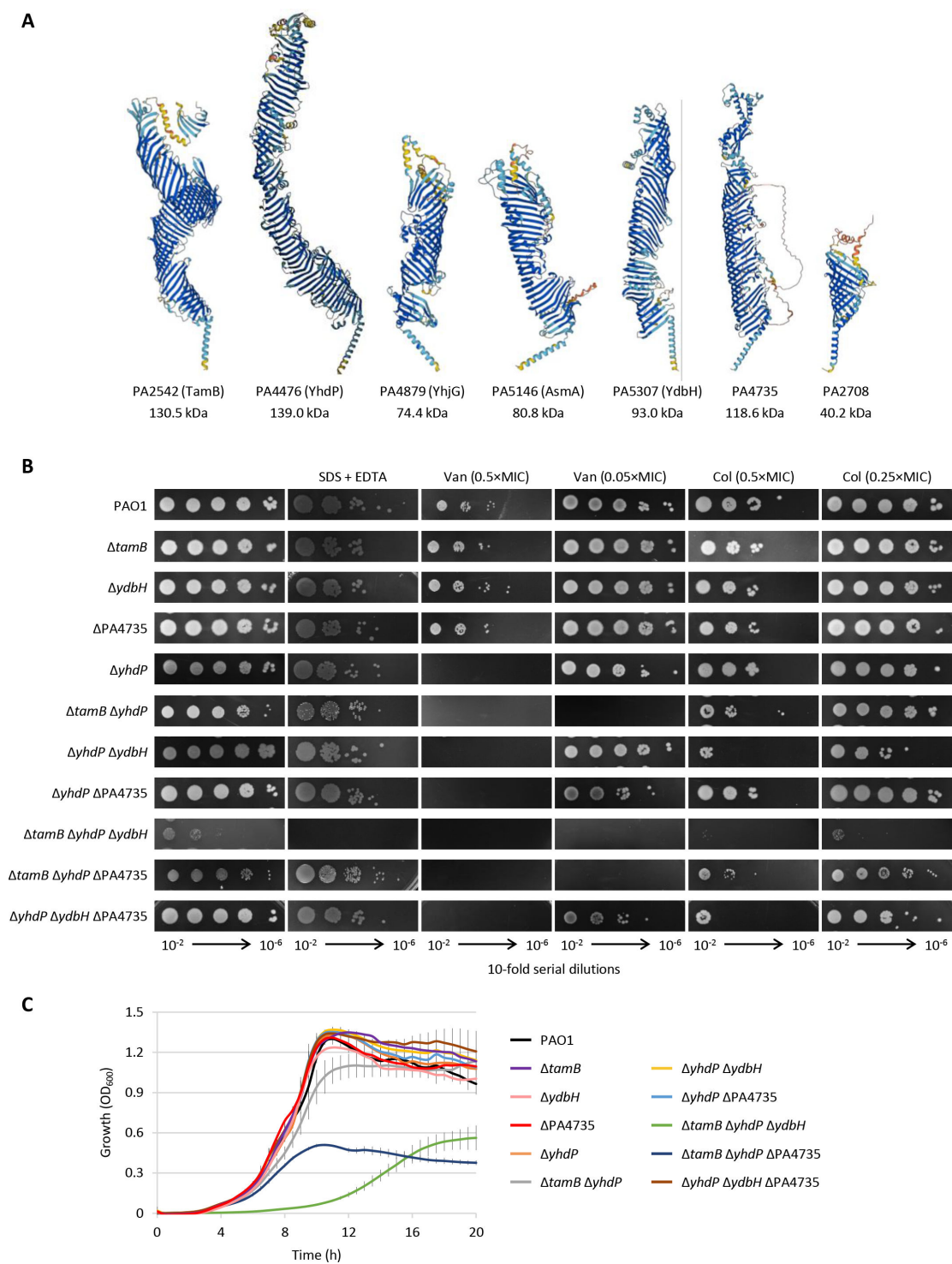


FIG 1 (A) Three-dimensional structures of *P. aeruginosa* AsmA-like proteins predicted by AlphaFold (<https://alphafold.ebi.ac.uk/>). The predicted molecular weights are also shown. (B) Plating efficiency of *P. aeruginosa* PAO1 and selected isogenic mutants with single, double, or triple deletions in *asmA*-like genes on MH agar plates supplemented or not with SDS and EDTA (0.25% and 0.25 mM, respectively), vancomycin (Van), or colistin (Col) at concentrations corresponding to 0.05, 0.25, or 0.5× MIC for the wild-type strain (as indicated). Images were taken after 24 h of incubation at 37°C and are representative of at least three independent experiments. The single mutants $\Delta tamB$, $\Delta ydbH$, and $\Delta PA4735$ were included as controls. (C) Planktonic growth of *P. aeruginosa* PAO1 and selected isogenic mutants with single, double, or triple deletions in *asmA*-like genes in Mueller-Hinton (MH) broth in microtiter plates at 37°C. Values are the mean (\pm standard deviation) of three independent experiments performed in triplicate.

predicted three-dimensional structure of the *P. aeruginosa* AsmA-like proteins has been retrieved from the AlphaFold Protein Structure Database (<https://alphafold.ebi.ac.uk/>) (28). All *P. aeruginosa* AsmA-like proteins are predicted to share an N-terminal TMH and an elongated tube-like structure rich in β -strands with a lateral opening along the long axis (Fig. 1A). This structure resembles the periplasmic bridge made by Lpt proteins responsible for LPS transport across the periplasm (29, 30). Notably, the *P. aeruginosa* protein PA2708 is much smaller than the other AsmA-like proteins of both *P. aeruginosa* and *E. coli* (Table 1), and the length of its periplasmic domain is likely not sufficient to span the entire periplasmic space (Fig. 1A).

Four AsmA-like proteins are redundantly essential in *P. aeruginosa*

In order to investigate the role of AsmA-like proteins in *P. aeruginosa*, we attempted to construct single, double, and triple in-frame deletion mutants in *asmA*-like genes in the reference strain *P. aeruginosa* PAO1. To reduce the number of possible combinations, at this stage, we decided to exclude PA2708 from the analysis, as its length and structure do not appear to be compatible with GPL transport across the cell envelope (Fig. 1A). However, the possible role of this protein has been investigated later in this study (see below). Forty-two mutants, corresponding to single, double, and triple mutants in *asmA*, *tamB*, *yhdP*, *ydbH*, *yhjG*, and PA4735 in all possible combinations, were generated (Table S1). Notably, although the concomitant inactivation of *tamB*, *yhdP*, and *ydbH* was found to be lethal in *E. coli* (22, 23), the triple mutant $\Delta tamB \Delta yhdP \Delta ydbH$ was successfully obtained in *P. aeruginosa*.

To preliminarily screen all these mutants for defects in growth and/or OM integrity, we performed a qualitative spot plating assay on MH agar plates supplemented or not with the membrane-perturbing agents SDS and EDTA or sub-inhibitory concentrations of vancomycin (poorly active against Gram-negative cells with an intact OM) or colistin (that primarily targets the OM) (31–34). Several mutants displayed impaired growth and/or OM integrity defects with respect to the wild-type strain PAO1 (Fig. S1), thus confirming that AsmA-like proteins play important role(s) also in *P. aeruginosa*. The mutants that show an individual effect of each *asmA*-like gene on *P. aeruginosa* growth and OM integrity are shown in Fig. 1B. Single deletion of any *asmA*-like genes did not affect *P. aeruginosa* growth, even if the absence of YhdP made the cells more sensitive to vancomycin (no growth at 0.5 \times MIC for PAO1, corresponding to 1 mg/mL) (Fig. 1B; Fig. S1). The concomitant lack of YhdP and TamB ($\Delta tamB \Delta yhdP$ mutant) slightly impaired growth (smaller colonies on MH agar) and hugely increased vancomycin sensitivity (no growth at 0.05 \times MIC for PAO1). The absence of YdbH in YhdP-deficient cells ($\Delta yhdP \Delta ydbH$ mutant) slightly increased colistin sensitivity at both 0.5 \times and 0.25 \times MIC for PAO1 (corresponding to 0.25 and 0.125 μ g/mL, respectively). Although viable, the triple mutant $\Delta tamB \Delta yhdP \Delta ydbH$ was strongly defective in growth and more sensitive to the membrane-destabilizing agents SDS and EDTA compared with the other strains (Fig. 1B). The deletion of *asmA* and/or *yhjG* in combination with all other mutations did not further impair growth under any conditions tested (Fig. S1), implying that these genes have no relevant effects on the phenotypes investigated in this assay. Interestingly, the inactivation of PA4735 in the $\Delta tamB \Delta yhdP$ and $\Delta yhdP \Delta ydbH$ mutants reduced the bacterial colony size under some conditions tested (Fig. 1B), suggesting that the lack of this protein might have a detrimental effect on *P. aeruginosa* cells defective in other important AsmA-like proteins.

To quantitatively assess the impact of AsmA-like proteins on *P. aeruginosa* growth, planktonic growth assays were performed in MH broth for all mutants. The growth curves of the single mutants (including $\Delta yhdP$) and the wild-type strain were almost identical (Fig. 1C and data not shown), corroborating the results of the spot plating assay. A slight decrease in growth yields was observed for the double mutant $\Delta tamB \Delta yhdP$ and, to a greater extent, for the triple mutant $\Delta tamB \Delta yhdP \Delta PA4735$, while both growth rates and yields were drastically reduced in the triple mutant $\Delta tamB \Delta yhdP \Delta ydbH$ (Fig. 1C).

These results demonstrate that YhdP, TamB, and YdbH are redundant and important for *P. aeruginosa* growth and OM integrity, in line with what was previously observed in *E. coli* (22, 23). However, the viability of the triple mutant $\Delta tamB \Delta yhdP \Delta ydbH$ in *P. aeruginosa* strongly suggests the presence of additional protein(s) in this bacterium that may be involved in the same physiological process, thus sustaining the low level of growth observed in the absence of YhdP, TamB, and YdbH. The detrimental effect of PA4735 inactivation on cells deficient in other AsmA-like proteins (Fig. 1) prompted us to investigate whether PA4735 could be responsible for the residual growth of $\Delta tamB \Delta yhdP \Delta ydbH$ cells. Several attempts to obtain a quadruple deletion mutant in *tamB*, *yhdP*, *ydbH*, and PA4735 failed, corroborating the hypothesis that PA4735 could be essential in YhdP-, TamB-, and YdbH-deficient cells. Therefore, we generated a conditional mutant carrying a rhamnose-dependent copy of *tamB* in a neutral site of the chromosome and deleted the endogenous copies of *tamB*, *yhdP*, and *ydbH* ($\Delta yhdP \Delta ydbH \Delta tamB rhaSR-P_{rhaBAD}::tamB$; Table S1). As expected, the growth of this conditional mutant was promoted by rhamnose (Fig. 2), although basal *tamB* expression in the absence of the inducer alleviated the growth defect relative to the triple-deletion mutant $\Delta tamB \Delta yhdP \Delta ydbH$ (Fig. 1 and 2). Then, *asmA*, *yhjG*, PA4735, and PA2708 genes were individually deleted in this conditional mutant. Growth assays on agar plates and in liquid medium revealed that *P. aeruginosa* growth was abrogated by the concomitant inactivation or depletion of YhdP, YdbH, TamB, and PA4735 (Fig. 2). In contrast, the deletion of *asmA*, *yhjG*, or PA2708 in the conditional mutant $\Delta yhdP \Delta ydbH \Delta tamB rhaSR-P_{rhaBAD}::tamB$ did not exacerbate the growth defects of this strain under non-inducing conditions (Fig. 2A). This result demonstrates that PA2708, which was not investigated in the initial genetic screening, is not required for *P. aeruginosa* growth, and confirms that, compared with *E. coli*, *P. aeruginosa* has an additional AsmA-like protein (i.e., PA4735) that cooperates with YhdP, TamB, and YdbH to support bacterial growth.

To further investigate this issue, we introduced a plasmid for the IPTG-inducible overexpression of PA4735 (pMEPA4735; Table S2) into the conditional mutant $\Delta yhdP \Delta ydbH \Delta tamB rhaSR-P_{rhaBAD}::tamB \Delta PA4735$. For comparison, YhdP- or YdbH-expressing plasmids (i.e., pMEyhdP and pMEydbH; Table S2) were also generated and tested. Plasmids carrying *yhdP* or *ydbH* were able to rescue the growth of the conditional mutant under non-permissive conditions (absence of rhamnose) both in the presence and in the absence of IPTG (Fig. 3A and B), indicating that the basal level of expression from

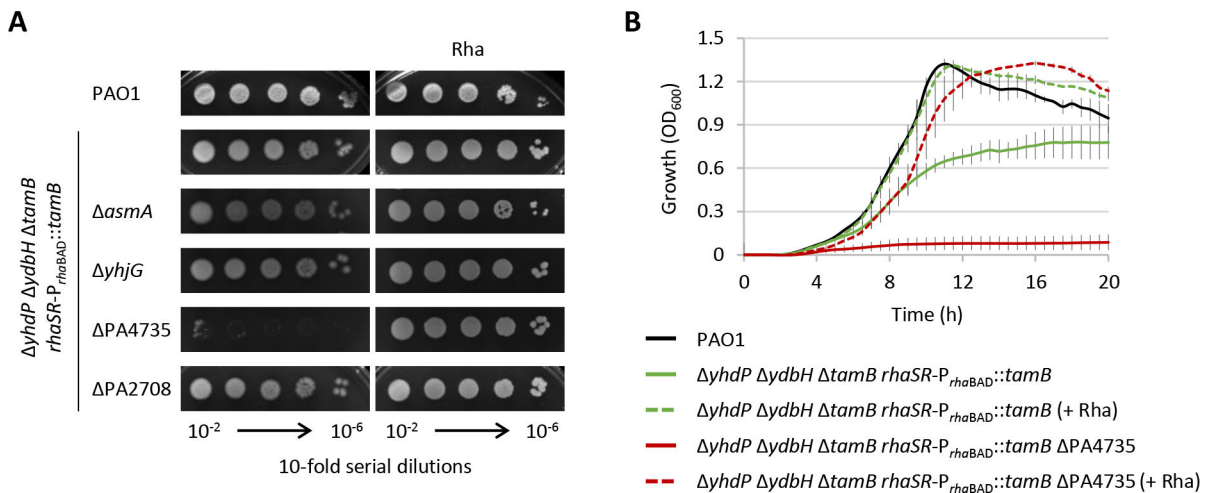


FIG 2 (A) Plating efficiency of *P. aeruginosa* PAO1, the rhamnose-dependent conditional mutant $\Delta yhdP \Delta ydbH \Delta tamB rhaSR-P_{rhaBAD}::tamB$, and its derivatives deleted of *yhjG*, *asmA*, PA4735, or PA2708 on MH agar plates supplemented or not 0.01% rhamnose (Rha). Images were taken after 24 h of incubation at 37°C and are representative of three independent experiments. (B) Planktonic growth of the wild-type strain and the conditional mutants $\Delta yhdP \Delta ydbH \Delta tamB rhaSR-P_{rhaBAD}::tamB$ and $\Delta yhdP \Delta ydbH \Delta tamB rhaSR-P_{rhaBAD}::tamB \Delta PA4735$ in MH broth in microtiter plates at 37°C. Values are the mean (\pm standard deviation) of three independent experiments performed in triplicate.

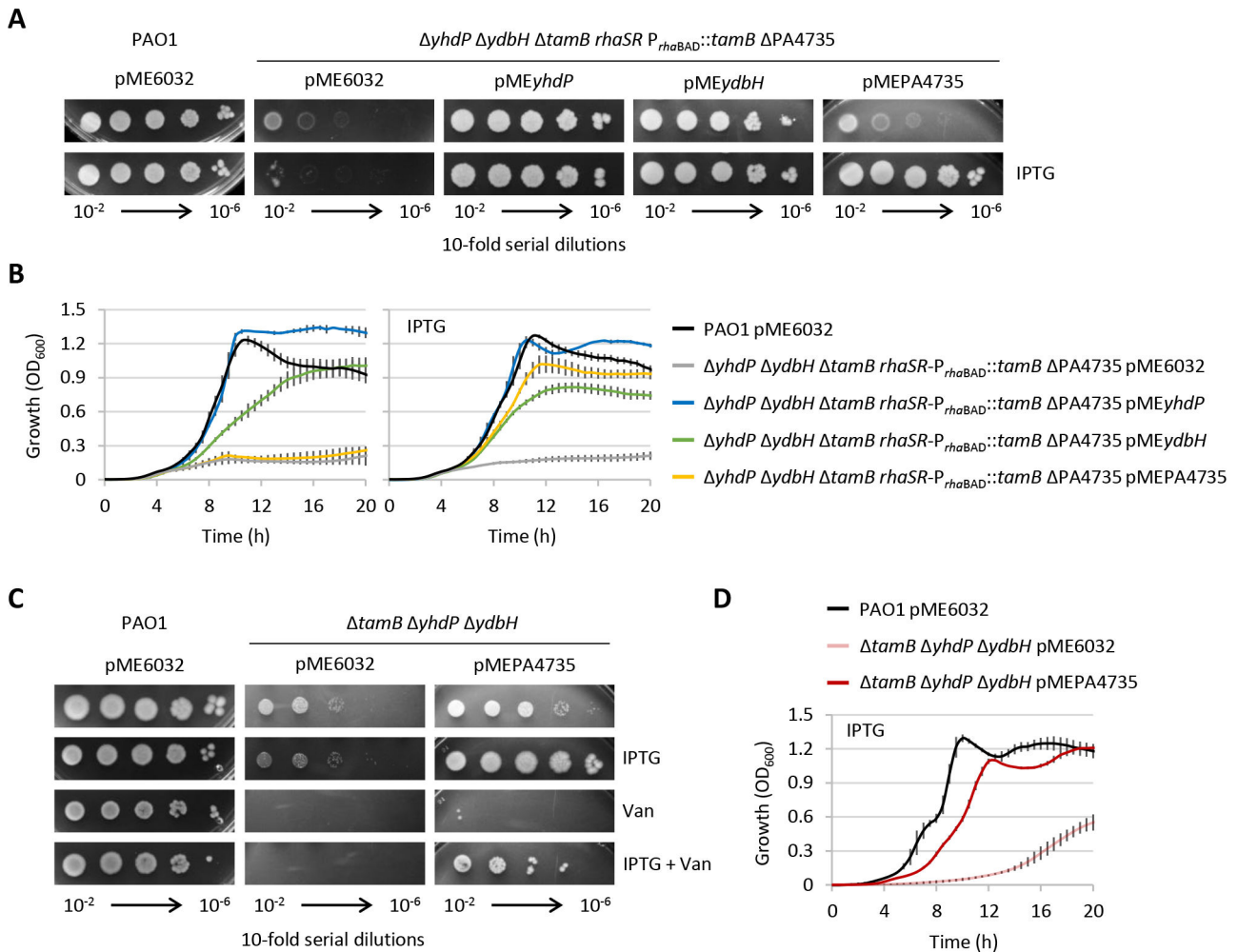


FIG 3 (A) Plating efficiency and (B) planktonic growth of the conditional mutant $\Delta yhdP \Delta ydbH \Delta tamB rhaSR-P_{rhaBAD}::tamB \Delta PA4735$ complemented with the IPTG-inducible construct pMEyhdP, pMEydbH, or pMEPA4735 or the empty plasmid pME6032 as negative control, cultured in the presence or absence of 0.5 mM IPTG. (C) Plating efficiency and (D) planktonic growth of the triple mutant $\Delta tamB \Delta yhdP \Delta ydbH$ carrying pME6032 or pMEPA4735, cultured in the presence and/or absence of 0.5 mM IPTG and/or vancomycin at 100 μ g/mL. In all experiments, *P. aeruginosa* PAO1 carrying pME6032 was used as the positive control of growth. Data are the mean (\pm standard deviation) or are representative of at least three independent experiments.

the IPTG-dependent promoter in *P. aeruginosa* is sufficient to restore YhdP and YdbH functionality. Interestingly, ectopic expression of YdbH at both basal and induced levels did not restore growth at wild-type levels or at levels achieved upon YhdP (over)expression (Fig. 3B). This suggests that YdbH could be less effective than YhdP in performing the essential function(s) that AsmA-like proteins provide in *P. aeruginosa*. The introduction of pMEPA4735 in the conditional mutant did not restore growth unless IPTG was added to the medium (Fig. 3A and B), implying that high levels of PA4735 expression are required to support growth. This was confirmed by introducing the pMEPA4735 plasmid into the triple mutant $\Delta tamB \Delta yhdP \Delta ydbH$, which expresses PA4735 at physiological levels. Upon induction with IPTG, the mutant carrying pMEPA4735 showed growth and vancomycin resistance profiles almost comparable to those of the wild-type strain (Fig. 3C and D), indicating that, when overexpressed, PA4735 is able to sustain growth and OM integrity even in the absence of the other essential AsmA-like proteins YhdP, TamB, and YdbH.

In conclusion, these results demonstrate that four AsmA-like proteins are essential but redundant in *P. aeruginosa*, including one (PA4735) that is not present in the model organism *E. coli*. A search for orthologs in the *Pseudomonas* Genome Database revealed

that PA4735 is not restricted to *P. aeruginosa*, as putative PA4735 orthologs are present in many *Pseudomonas* species (<https://pseudomonas.com/>). While BLASTP search in the NCBI database did not identify any putative PA4735 homologs outside the *Pseudomonas* genus, structure-based comparisons in the AlphaFold database retrieved putative structural homologs of PA4735 in some distantly related bacteria belonging to different classes or phyla of diderm bacteria (Table S3). Alignment of the predicted 3D structures of PA4735 and some of these putative structural homologs confirmed that the overall fold of PA4735 is highly conserved in these proteins (Fig. S2). Even if this analysis is only based on structural predictions and might not be comprehensive, it strongly suggests that PA4735-like proteins are not exclusive to the *Pseudomonas* genus.

AsmA-like proteins are important for cell morphology and membrane integrity

In *E. coli*, depletion of essential AsmA-like proteins causes significant defects in cell morphology and membrane permeability (22, 23). Confocal microscopy imaging of cells stained with the membrane-labeling dye FM4-64 showed that cells of the double mutant $\Delta tamB \Delta yhdP$ are smaller (reduced cell area) and rounder (lower length/width ratio) than wild-type cells (Fig. 4 and S3), while all other single or double mutants did not show any apparent alteration of cell morphology (data not shown). Comparable phenotypes were observed for the triple mutants $\Delta tamB \Delta yhdP \Delta PA4735$ and $\Delta tamB \Delta yhdP \Delta ydbH$, as well as for cells of the conditional mutant $\Delta yhdP \Delta ydbH \Delta tamB rhaSR\text{-}P_{rhaBAD::tamB} \Delta PA4735$, whose growth was arrested by progressively reducing the concentration of rhamnose in the medium (Fig. 4 and S4). This suggests that the lack of TamB and YhdP proteins is mainly responsible for the observed cell elongation defects, even if growth is only marginally affected in TamB- and YhdP-depleted cells (Fig. 1). Notably, under non-permissive conditions, the growth of the conditional mutant $\Delta yhdP \Delta ydbH \Delta tamB rhaSR\text{-}P_{rhaBAD::tamB} \Delta PA4735$ was arrested without a relevant decrease in the optical density at 600 nm (OD_{600}), suggesting that depletion of essential AsmA-like proteins does not cause lysis in *P. aeruginosa*, different from what was observed in *E. coli* (22).

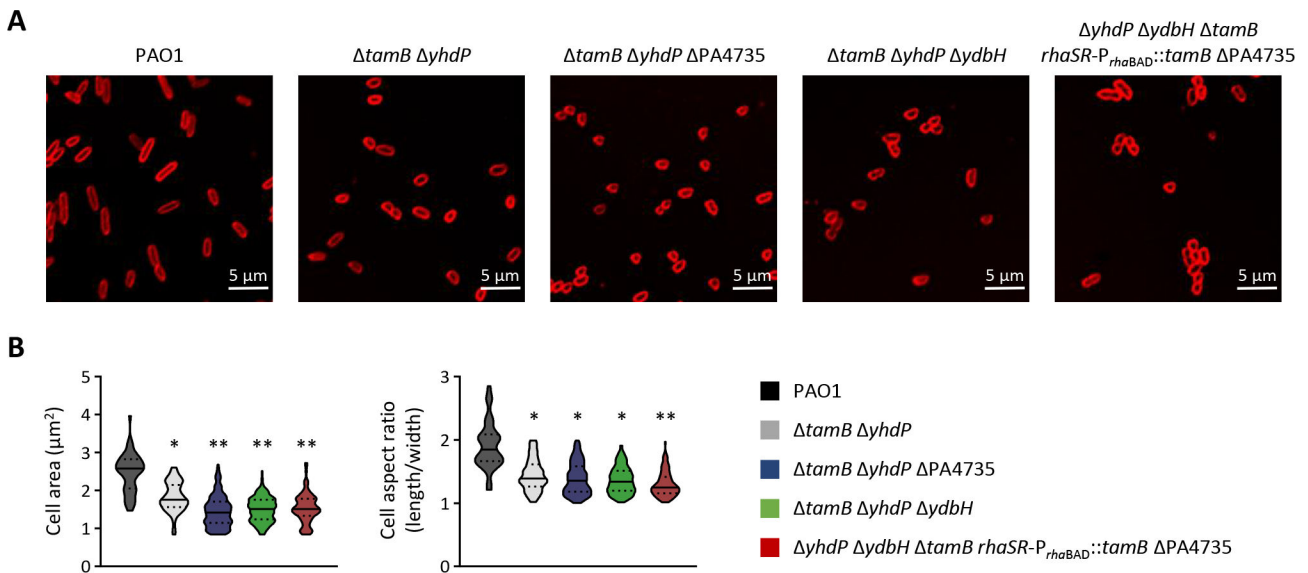


FIG 4 (A) Confocal microscopy images of *P. aeruginosa* PAO1 and the mutants $\Delta tamB \Delta yhdP$, $\Delta tamB \Delta yhdP \Delta ydbH$, $\Delta tamB \Delta yhdP \Delta PA4735$, and $\Delta yhdP \Delta ydbH \Delta tamB rhaSR\text{-}P_{rhaBAD::tamB} \Delta PA4735$ stained with the membrane-labeling dye FM4-64. Strains were cultured in MH until the mid-exponential phase, except for the conditional mutant $\Delta yhdP \Delta ydbH \Delta tamB rhaSR\text{-}P_{rhaBAD::tamB} \Delta PA4735$ that was progressively depleted of TamB using the culturing strategy shown in Fig. S4. Images are representative of two independent experiments and several fields of view showing the same results. (B) Violin plots showing cell area (μm^2) and aspect ratio (length/width) for 100 cells of the same strains shown in panel A, calculated with the ImageJ software. Asterisks indicate a statistically significant difference with respect to the wild-type strain (* $P < 0.05$ and ** $P < 0.01$; unpaired t test). Confocal microscopy images and analysis of the single mutants $\Delta tamB$, $\Delta yhdP$, $\Delta ydbH$, and $\Delta PA4735$ are shown in Fig. S3.

The introduction of a plasmid expressing an FtsZ-GFP fusion protein (pMEftsZ-GFP; Table S2) (35) allowed demonstrating that the Z-ring is assembled and correctly localized at mid-cell in double and triple *asmA*-like gene mutants (Fig. S5), leading to hypothesizing that depletion of essential AsmA-like proteins does not directly affect the divisome assembly and, plausibly, cell constriction.

The importance of AsmA-like proteins for membrane functionality was investigated through cell permeability assays with the fluorescent probes 1-N-phenyl-naphthylamine (NPN) and propidium iodide (PI), on strains that showed growth or antibiotic resistance defects (Fig. 1 and 2). NPN is a hydrophobic probe whose fluorescence is strongly increased upon binding to membrane lipids and is commonly used to measure OM destabilization, while PI only enters cells with damaged membranes and increases its fluorescence upon binding to nucleic acids (36, 37). Cells lacking TamB and YhdP were found to be 20-fold more permeable to NPN than wild-type cells (Fig. 5), indicating that the permeability barrier of the OM is significantly compromised. Permeability to NPN was further increased in TamB- and YhdP-deficient cells also lacking PA4735 or YdbH (Fig. 5), indicating that all these AsmA-like proteins contribute to some extent to OM homeostasis. Accordingly, the OM of *P. aeruginosa* cells was extremely permeable to NPN when the four AsmA-like proteins were concomitantly depleted (conditional mutant $\Delta yhdP \Delta ydbH \Delta tamB rhaSR-P_{rhaBAD}::tamB \Delta PA4735$ in Fig. 5). The PI permeability profiles of all these mutants substantially mirrored those of NPN (Fig. 5), confirming that AsmA-like protein depletion causes relevant defects in membrane functionality.

Lowering LPS synthesis or transport partially rescues the OM defects caused by AsmA-like protein depletion

Reduced biosynthesis or transport of GPLs is expected to affect bacterial cell size and growth rate by hampering the ability of the bacterium to create biomass for cell elongation and division (38, 39). However, the integrity and functionality of the OM as a permeability barrier mainly rely on the balance between the LPS and GPL content in the outer and inner leaflets, respectively (23, 38, 40, 41). Thus, if AsmA-like proteins are indeed responsible for GPL transport from the IM to the OM, one might expect the OM defects of cells depleted of AsmA-like proteins to be rescued by reducing the amount of LPS in the OM. This has been demonstrated in *E. coli*, where the replacement of the LPS biosynthetic gene *lpxC* with the less functional allele *lpxC101*, resulting in reduced LPS synthesis, partially restored OM functionality in cells deficient in essential AsmA-like proteins (23). We attempted to demonstrate if the same occurs in *P. aeruginosa* by using two complementary approaches, based on (i) chemical inhibition of LpxC activity or (ii)

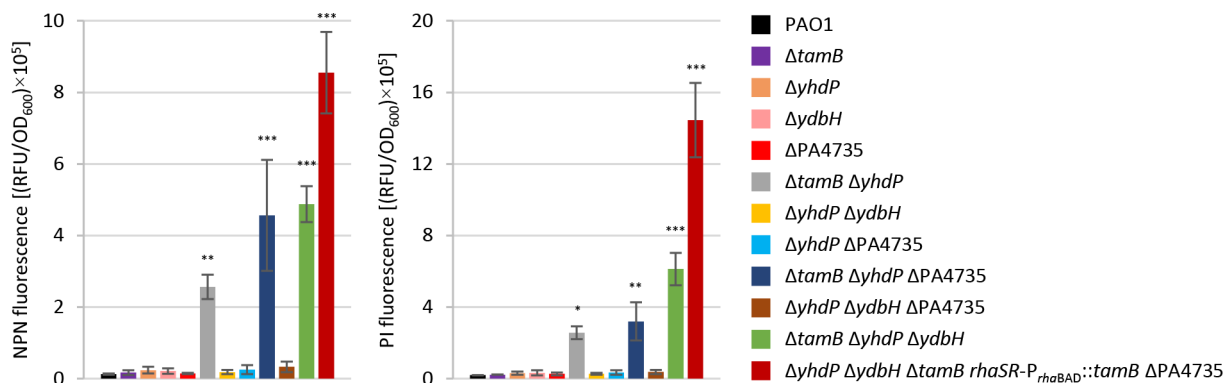


FIG 5 Uptake of NPN (left panel) and PI (right panel) by *P. aeruginosa* PAO1 and selected isogenic mutants, measured as relative fluorescence units (RFU) normalized to the OD₆₀₀ of the bacterial suspension. Strains were cultured in MH until the mid-exponential phase, except for the conditional mutant $\Delta yhdP \Delta ydbH \Delta tamB rhaSR-P_{rhaBAD}::tamB \Delta PA4735$ that was progressively depleted of TamB using the culturing strategy shown in Fig. S4. Values are the mean (\pm standard deviation) of three independent experiments, and asterisks indicate a statistically significant difference with respect to the wild-type strain (* $P < 0.05$, ** $P < 0.01$, and *** $P < 0.001$; ANOVA).

conditional mutagenesis to lower the expression of the *lptB* gene, which encodes the ATPase essential to energize LPS transport through the Lpt machinery (42).

For chemical inhibition, we used the LpxC inhibitor PF-5081090 previously demonstrated to be active against many Gram-negative bacteria including *P. aeruginosa* (43). Preliminary growth assays in the presence of different concentrations of PF-5081090 were performed for the wild-type strain PAO1 and the triple mutant $\Delta tamB \Delta yhdP \Delta ydbH$ to select the highest concentration that did not affect growth (Fig. 6A). Then, strains were cultured in the presence of the selected sub-inhibitory PF-5081090 concentration (0.031× MIC) and the NPN permeability assay was performed to monitor OM functionality. In wild-type cells, PF-5081090 treatment caused a mild (1.6-fold) increase in OM permeability (Fig. 6B), in line with what was previously observed in *P. aeruginosa* cells impaired in LPS transport (44). Conversely, treatment with an equivalent amount of PF-5081090 led to a significant twofold reduction of OM permeability in the $\Delta tamB \Delta yhdP \Delta ydbH$ mutant (Fig. 6B), though this was not sufficient to restore growth and OM integrity at wild-type levels (Fig. 6A and B)

Almost identical results were obtained by placing the LPS transport gene *lptB* under the control of a rhamnose-dependent promoter in PAO1 and in the $\Delta tamB \Delta yhdP \Delta ydbH$

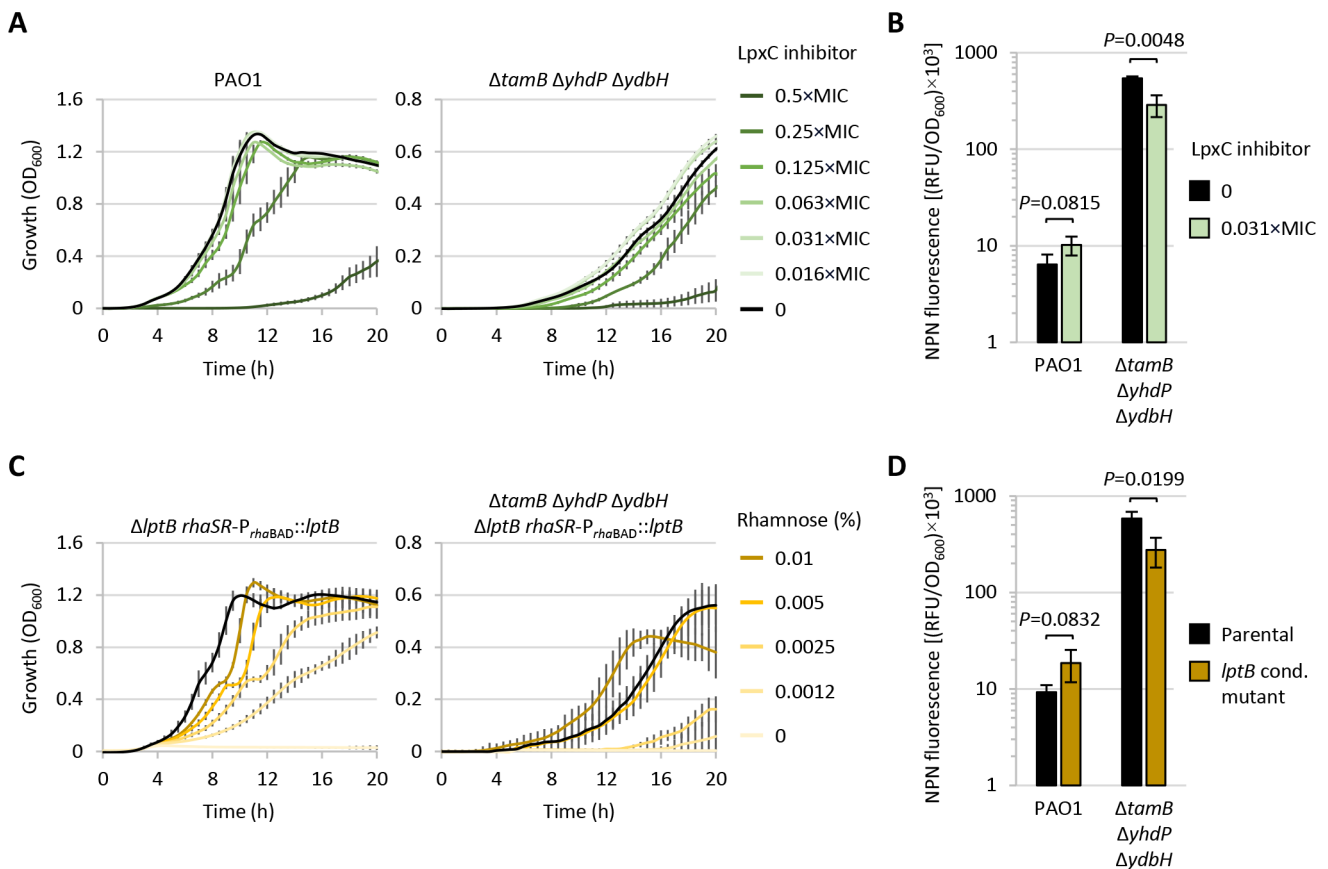


FIG 6 (A) Planktonic growth of *P. aeruginosa* PAO1 and the triple mutant $\Delta tamB \Delta yhdP \Delta ydbH$ cultured in MH broth in the presence or absence of different sub-inhibitory concentrations of the LpxC inhibitor PF-5081090. The MIC of PF-5081090 was 0.25 µg/mL for PAO1 and 0.125 µg/mL for $\Delta tamB \Delta yhdP \Delta ydbH$. (B) Uptake of NPN by the same strains described in panel A cultured until mid-exponential phase in the presence or absence of 0.031× MIC of PF-5081090, measured as RFU normalized to the OD₆₀₀ of the bacterial suspension. (C) Planktonic growth of the conditional mutants $\Delta lptB rhaSR-P_{rhaBAD}::lptB$ and $\Delta tamB \Delta yhdP \Delta ydbH \Delta lptB rhaSR-P_{rhaBAD}::lptB$ cultured in MH broth in the presence or absence of different concentrations of rhamnose as indicated. The parental strains PAO1 (left panel) and $\Delta tamB \Delta yhdP \Delta ydbH$ (right panel) cultured in the absence of rhamnose were included as controls (black lines). (D) Uptake of NPN by the same strains described in panel C cultured until mid-exponential phase in the presence of rhamnose at 0.01% ($\Delta lptB rhaSR-P_{rhaBAD}::lptB$) or 0.005% ($\Delta tamB \Delta yhdP \Delta ydbH \Delta lptB rhaSR-P_{rhaBAD}::lptB$), measured as RFU normalized to the OD₆₀₀ of the bacterial suspension. Values are the mean (±standard deviation) of three independent experiments. The unpaired t test was used to assess statistically significant differences between treated and untreated samples in panel B and between parental strains and the cognate *lptB* conditional mutants in panel D.

mutant. As expected, the growth of both conditional mutants ($\Delta lptB$ *rhaSR*-*P*_{rhaBAD}::*lptB* and $\Delta tamB$ $\Delta yhdP$ $\Delta ydbH$ $\Delta lptB$ *rhaSR*-*P*_{rhaBAD}::*lptB*; Table S1) was promoted by rhamnose in a dose-dependent manner (Fig. 6C), confirming the essentiality of the Lpt system in *P. aeruginosa* (45). By performing the NPN permeability assay on cells cultured in the presence of sub-optimal concentrations of rhamnose, again, we observed that the OM was twofold more permeable in the AsmA-like protein-proficient strain and twofold less permeable in the strain deficient in AsmA-like proteins (Fig. 6D).

Overall, these results demonstrate that the OM of cells defective in AsmA-like protein function(s) can be partially stabilized by reducing LPS levels in the OM, thus corroborating the proposed role of AsmA-like proteins in GPL transport to the OM (22–24, 26).

TamA is only required for TamB activity

In *E. coli*, TamB interacts with the OM β -barrel protein TamA to form the so-called TAM complex (46), which was originally proposed to be involved in the insertion into the OM of a subset of β -barrel proteins, such as autotransporters and fimbrial ushers (47, 48). More recently, genetic evidence highlighted that TamA is required for the function of TamB in maintaining OM homeostasis in *E. coli* (22). Since a *tamA* ortholog is present in *P. aeruginosa* (PA2543 in PAO1) and appears to be operonic with *tamB* (<https://pseudomonas.com/>), we decided to verify whether TamA is required for TamB activity also in this bacterium. To this aim, we generated an in-frame deletion in *tamA* in the wild-type and $\Delta yhdP$ $\Delta ydbH$ backgrounds. The single mutant $\Delta tamA$ did not show any growth defect, in line with what was observed for the $\Delta tamB$ mutant (Fig. 7). In contrast, deletion of *tamA* in the mutant lacking YhdP and YdbH drastically reduced growth, both on agar plates and in liquid medium. Notably, the growth profile of the $\Delta yhdP$ $\Delta ydbH$ $\Delta tamA$ mutant was almost identical to that of the $\Delta tamB$ $\Delta yhdP$ $\Delta ydbH$ mutant (Fig. 7), strongly suggesting that the absence of TamA makes TamB inactive and, thus, that TamB-TamA interaction is likely important for TamB functionality also in *P. aeruginosa*. Notably, the $\Delta tamA$ mutant also showed no increase in NPN permeability or vancomycin sensitivity (data not shown), indicating that the integrity of the OM is not (or only marginally) compromised in TamA-deficient *P. aeruginosa* cells. Since OM integrity is very sensitive to the absence of YhdP, YdbH, and/or PA4735 (Fig. 1 and 5), this finding leads us to propose that the other essential AsmA-like proteins do not rely on TamA for their function(s).

DISCUSSION

The anterograde transport of GPLs from the IM to the OM of Gram-negative bacteria is one of the most elusive essential physiological processes in bacteria. Recently, independent studies performed in the model organism *E. coli* provided genetic and biochemical evidence that proteins belonging to the AsmA-like clan could account for this task

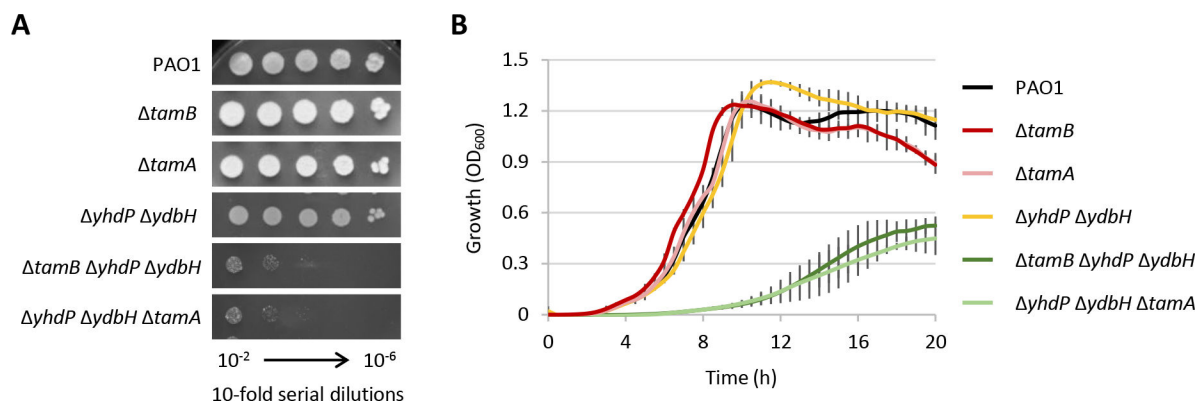


FIG 7 Comparison of (A) plating efficiency and (B) planktonic growth between selected *tamA* and *tamB* mutants on MH agar plates or in MH broth. The wild-type strain PAO1 and the double mutant $\Delta yhdP$ $\Delta ydbH$ were used as controls. Data are the mean (\pm standard deviation) or are representative of at least three independent experiments.

(22–24). Although a direct demonstration that AsmA-like proteins are able to bind and transport GPLs still lacks, it has been shown that *E. coli* cells depleted of the AsmA-like proteins YhdP, TamB, and/or YdbH (i) have a reduced flux of GPLs toward the OM (24); (ii) are defective in growth, cell elongation, OM integrity, and antibiotic resistance, all phenotypes reminiscent of impaired OM biogenesis (22, 23); and (iii) accumulate GPLs in the IM (23). These findings, together with the predicted subcellular localization and tube-like structure of AsmA-like proteins, resembling eukaryotic inter-organelle GPL transporters and Lpt proteins responsible for LPS transport toward the OM (26, 27, 29, 30), strongly support the hypothesis that these proteins may represent the long sought-after mechanism for GPL translocation from the IM to the OM (22, 23, 26).

Since GPL transport is expected to be essential for OM biogenesis in all diderm bacteria, proving that AsmA-like proteins play a key role in cell envelope biogenesis and cell viability also in other species is pivotal to propose these proteins as the universal GPL transport mechanism of Gram-negative bacteria. Although the possible role of AsmA-like proteins in GPL transport has only been recently proposed (22, 23), the effect of the lack of specific AsmA-like protein(s) has been occasionally investigated in diderm bacteria other than *E. coli*. Most of the studies were focused on TamB orthologs, probably because of the originally proposed role of this AsmA-like protein in the maturation of a subset of OM β -barrel proteins (46–48). Similar to what was observed in *E. coli*, the *Brucella suis* TamB homolog MapB is required for proper assembly of an autotransporter adhesin in the OM, although MapB-deficient cells also display anomalies in cell morphology and division (49). The lack of the TamB homolog MorC in *Aggregatibacter actinomycetemcomitans* does not affect autotransporter levels in the OM (50) but changes OM morphology from rugose to flat, decreases cell size, and induces autoaggregation (51). Likewise, the TamB homolog DR_146T of *Deinococcus radiodurans* is important for the maintenance of cell envelope integrity and for resistance to shear and osmotic stresses (52), while the lack of TamB in the intracellular pathogen *Edwardsiella tarda* leads to pleiotropic defects in membrane integrity under stresses, motility, cell invasion, and intracellular replication (53). In *Salmonella*, the Tam system does not appear to be involved in the assembly of autotransporters but affects OM homeostasis and shows some functional interplay with the Bam machinery (54). Finally, it has been recently found that *tamB* inactivation alleviates the OM lipid asymmetry defects of a Mla-defective mutant of *Veillonella parvula*, a diderm member of the Gram-positive phylum Firmicutes (55), suggesting that the role of TamB in OM lipid homeostasis may be widely conserved.

In this study, we provide the first systematic investigation of AsmA-like proteins in a Gram-negative bacterium different from *E. coli*. Our results revealed that, in line with what was previously demonstrated in *E. coli*, *P. aeruginosa* has multiple highly conserved AsmA-like proteins, some of which are essential but redundant for growth and OM integrity. The three essential AsmA-like proteins of *E. coli* (i.e., YhdP, TamB, and YdbH) seem to be functionally conserved in *P. aeruginosa*, as well as their relative contribution to OM homeostasis, with YhdP playing a more critical role than TamB and YdbH (Fig. 1) (22). However, we also found that an additional AsmA-like protein absent in *E. coli*, PA4735, compensates for the lack of YhdP, TamB, and YdbH, thus supporting the growth of the triple mutant $\Delta tamB \Delta yhdP \Delta ydbH$ in *P. aeruginosa* (Fig. 2 and 3). We therefore propose to name the PA4735 gene *epaF* (for essential Pseudomonas AsMA-like protein four). While sequence homology search suggested that this protein may be specific to the *Pseudomonas* genes, we identified putative structural homologs in several diderm bacteria (Table S3 and Fig. S2), implying that this protein might be involved in cell envelope biogenesis also in other species. Although we did not provide direct evidence of GPL translocation through AsmA-like proteins, we confirmed that also in *P. aeruginosa*, the defects in the OM permeability barrier caused by AsmA-like protein deficiency can be partially rescued by reducing the synthesis or transport of LPS (Fig. 6), as previously observed in *E. coli* (23). This is consistent with the notion that the balance between LPS and GPL in the OM is crucial for maintaining OM asymmetry and a functional permeabil-

ity barrier (23, 38, 40, 41), thus indirectly supporting the proposed role of AsmA-like proteins in GPL anterograde transport (22, 23, 26).

The *P. aeruginosa* genomes have three other *asmA*-like genes that, based on the assays performed in this study, do not seem to play a major role in OM biogenesis or homeostasis. Two of them encode putative homologs of the *E. coli* proteins AsmA and YhjG. While inactivation of *yhjG*, alone or in combination with other *asmA*-like genes, has no or very low impact on phenotypes related to OM integrity also in *E. coli* (22, 23), the effect of AsmA deficiency on *P. aeruginosa* markedly differs from that observed in the model organism *E. coli*. Indeed, the importance of AsmA for *E. coli* cell envelope homeostasis has been known for years (56) and has been recently confirmed (22). In contrast, we did not observe any effects of *asmA* deletion on *P. aeruginosa*, even when combined with the inactivation of multiple *asmA*-like genes (Fig. S1 and S2). Notably, the *P. aeruginosa* and *E. coli* AsmA proteins are highly divergent in terms of sequence homology and size, with the *P. aeruginosa* protein being 20% longer than the *E. coli* counterpart (Table 1), suggesting that either they are not actually orthologs or they diverged toward different functions in these two bacteria. However, the possibility that *asmA* in *P. aeruginosa* is only expressed in response to specific stimuli cannot be ruled out. The third non-essential AsmA-like protein of *P. aeruginosa* (PA2708) is much shorter than all the other AsmA-like proteins characterized so far (Table 1 and Fig. 1) (22, 23, 49–55), and its size is not expected to allow to cross the periplasmic space unless PA2708 can interact with OM partners protruding into the periplasm. Interestingly, this protein is conserved in different *Pseudomonas* species (<https://pseudomonas.com/>), indicating that it has been maintained during *Pseudomonas* evolution. Further studies are required to uncover its role in *Pseudomonas* physiology.

Overall, this work supports the recently proposed role of AsmA-like proteins in GPL transport, by demonstrating that a subset of AsmA-like proteins is redundantly essential for growth and OM biogenesis also in *P. aeruginosa*, and provides evidence that the repertoire of essential AsmA-like proteins of Gram-negative bacteria might be more variegated than that described in the model organism *E. coli*. However, there are still many open issues that need to be addressed to confirm the involvement of AsmA-like proteins in GPL anterograde transport and to decipher their mechanism of action. First, there is no biochemical and structural evidence that confirms the capability of AsmA-like proteins to interact with GPLs. Second, no data are available on the mechanism(s) by which AsmA-like proteins could extract GPLs from the IM and insert them into the OM. The OM β -barrel protein TamA is required for TamB function in OM biogenesis, both in *E. coli* and *P. aeruginosa* (22) (Fig. 7). Moreover, TamA possesses a lateral gate in the barrel domain similar to the one present in BamA that allows insertion of OM β -barrel proteins (57, 58). Thus, TamA could provide a possible route for inserting GPLs into the OM. However, since TamA is generally not essential in Gram-negative bacteria (59), it is unlikely that TamA represents a universal OM partner of AsmA-like proteins for GPL insertion into the OM. This would also be in line with phylogenomic evidence suggesting that many diderm bacteria have TamB but not TamA orthologs (60). Thus, either the other OM partner(s) of AsmA-like proteins have yet to be identified or, alternatively, some AsmA-like proteins could have intrinsic insertase activity, as it has been recently demonstrated for lipoprotein insertion by LolA in Gram-negative bacteria lacking the OM component LolB of the Lol system (61). Regarding the pathway(s) and mechanism(s) responsible for GPL extraction from the IM, if AsmA-like proteins require a dedicated IM protein machinery for GPL extraction, this should be essential for growth. However, it is hard to believe that it has not yet been identified after decades of research on cell envelope biogenesis in Gram-negative bacteria, unless redundant systems exist (as for AsmA-like proteins themselves) or protein machineries responsible for other essential transport processes are involved. The most obvious candidates could be the LptBFG or the LolCDE complexes, responsible for ATP-dependent extraction from the IM of LPS and lipoproteins, respectively (14–17). However, the first amino acids of mature OM lipoproteins appear to play a prominent role in substrate binding by LolCDE (62), and

biochemical and structural studies strongly suggest that LptBFG specifically binds LPS (63–65). Thus, unless their specificity is somehow affected by AsmA-like proteins or other still unidentified modulators, these ABC transporters are unlikely to account for GPL extraction from the IM and transfer to the AsmA-like proteins. Alternatively, the GPL flux toward the periplasmic groove of AsmA-like proteins could be directly driven by GPL synthesis at the IM, a mechanism that would not require the involvement of a specific energy-dependent transporter and that has been hypothesized for eukaryotic inter-organelle GPL transporters (27, 66). The high-flux diffusive flow of GPLs from the IM to the OM that has been observed in *E. coli* (24) would however require the presence of spots of very intensive GPL synthesis or local lipid packing perturbations that could facilitate an efficient loading of AsmA-like proteins with GPLs. In the coming years, we expect much exciting research to clarify these issues and finally unravel the mechanism of anterograde GPL transport in Gram-negative bacteria.

MATERIALS AND METHODS

Bacterial strains, plasmids and growth conditions

Strains and plasmids used in this study are listed in Tables S1 and S2, respectively. Bacteria were routinely cultured in Lysogeny broth, Lennox formulation (LB) for genetic manipulation. MH broth was used for plate efficiency and growth assays, permeability assays, and confocal microscopy studies. When required, antibiotics were added at the following concentration for *E. coli* (the concentrations used for *P. aeruginosa* are shown in brackets): ampicillin, 100 µg/mL; tetracycline, 12.5 µg/mL (50–100 µg/mL); carbenicillin (500 µg/mL); nalidixic acid, 15 µg/mL; and chloramphenicol, 30 µg/mL (375 µg/mL).

Generation of plasmids and recombinant strains

To obtain the constructs for the in-frame deletion of the *P. aeruginosa tamB*, *yhdP*, *yhjG*, *asmA*, *ydbH*, PA4735, and PA2708 genes, two DNA fragments of approximately 500 bp each, encompassing the upstream and downstream region of each gene of interest, were PCR amplified, directionally cloned into the *sacB*-based suicide vector pDM4 (67), and verified by DNA sequencing. Primers and restriction enzymes used for PCR and cloning are listed in Table S4. The resulting pDM4 derivatives were transferred into *P. aeruginosa* by conjugation, and transconjugants were selected on LB agar plates containing 15 µg/mL nalidixic acid and 375 µg/mL chloramphenicol. Deletion mutations were obtained by recombination and sucrose-based selection as previously described (68). Gene deletions were verified by PCR. To generate the *tamB* and the *lptB* conditional mutants, the *tamB* and the *lptB* coding sequences were individually PCR amplified and directionally cloned into the mini-CTX1 derivative pJM253 (69) downstream of the *rhaSR*-P_{rhaBAD} regulatory element. The resulting pJM253 derivatives were transferred into *P. aeruginosa* by conjugation, and transconjugants were selected on LB agar plates containing 15 µg/mL nalidixic acid and 100 µg/mL tetracycline. The plasmid backbone was removed using the *sacB*-based suicide vector pFLP2 (70) as previously described (68), and pFLP2 was cured by plating onto LB agar plates supplemented with 10% sucrose. Carbenicillin-sensitive clones were analyzed by colony PCR to verify the insertion of the *rhaSR*-P_{rhaBAD}::*tamB* or *rhaSR*-P_{rhaBAD}::*lptB* construct into the chromosome. Then, in-frame deletion of the endogenous copies of *tamB* or *lptB* was obtained by recombination and sucrose-based selection using the pDM4*tamB* and pDM4*lptB* constructs under permissive condition (i.e. growth in the presence of 0.01% rhamnose). The complementing plasmids pME*yhdP*, pME*ydbH*, and pMEPA4735 (Table S2) were generated by individually cloning the PCR-amplified coding sequence of *yhdP*, *ydbH*, or PA4735 into the shuttle vector pME6032, under the control of an IPTG-inducible promoter (71). All constructs were verified by DNA sequencing.

Plating efficiency and growth assays

For plating efficiency assays, bacterial strains were precultured in MH, supplemented with 0.01% rhamnose for the conditional mutants, harvested by centrifugation, and resuspended in sterile saline solution at $OD_{600} = 1$. Serial 10-fold dilutions were prepared, and 5- μ L aliquots of selected dilutions were spotted onto MH agar plates containing or not 0.25% SDS and 0.25 mM EDTA, 100 or 1,000 μ g/mL vancomycin (corresponding to 0.05 \times or 0.5 \times MIC for the PAO1 wild-type strain, respectively), or 0.125 or 0.25 μ g/mL colistin (corresponding to 0.25 \times and 0.5 \times MIC for the PAO1 wild-type strain, respectively) in the presence or not of 0.01% rhamnose or 0.5 mM IPTG, when appropriate.

For planktonic growth assays, bacterial strains were precultured in MH, supplemented with 0.01% rhamnose for the conditional mutants, and then refreshed 1:1,000 in MH in the absence or presence of 0.01% rhamnose, 0.5 mM IPTG, or increasing concentrations of the LpxC inhibitor PF-5081090 (43), when appropriate. Bacterial cultures were incubated in 96-well microtiter plates (200 μ L in each well) at 37°C in a Tecan Spark 10M microtiter plate reader, and growth was measured over time as the OD_{600} of the bacterial cultures.

TamB-depleted cells of the conditional mutant $\Delta yhdP \Delta ydbH \Delta tamB rhaSR-P_{rhaBAD}::tamB \Delta PA4735$ (Table S1), which were used for microscopy and cell envelope stability assays, were obtained through a previously described dual-refresh culturing strategy (72). Briefly, cells were cultured overnight in the presence of 0.01% rhamnose and then refreshed at high cell density (1:30 dilution) in the absence of rhamnose, cultured for 2 h, and then refreshed again (1:50 dilution) in the same medium. Cells were collected as soon as a growth defect was observed in the conditional mutant with respect to the wild-type strain (Fig. S4).

Confocal microscopy

Bacterial strains carrying the constructs $pMEftsZ-GFP$ were cultured in flask in MH, supplemented or not with 0.01% rhamnose, in the presence of 0.003 mM IPTG to induce non-toxic expression levels of the FtsZ-GFP fusion protein (35). Two hundred microliters of late-exponential phase cultures were collected, the fluorescent dye FM4-64 (73) was added at 5 μ g/mL, and the samples were incubated at 37°C for 30 min. Then, 5 μ L of the bacterial cell suspensions were spotted on a microscope glass slide overlaid with 0.5% agarose and imaged with a Nikon A1R HD25 confocal laser scanning microscope equipped with an Apo TIRF 100 \times oil immersion objective (NA 1.49). The 488- and 561-nm laser lines were employed for the GFP and FM4-64 excitation, respectively. Emission bandwidths at 500–540 nm and 600–720 nm were used for GFP and FM4-64 detection, respectively. Images were acquired at a sampling dimension of 512 \times 512 pixels and were deconvoluted using the NIS-Elements software (Nikon), using default parameters. Image processing to determine cell morphological parameters was performed according to a previously established pipeline (74). Cell area and aspect ratio were calculated using ImageJ v.1.53c for 100 cells of each bacterial strain (75).

Membrane permeability assays

Bacterial strains were cultured in MH, supplemented or not with 0.01% rhamnose, in the absence or presence of the LpxC inhibitor PF-5081090 at 0.031 \times MIC (corresponding to 0.008 μ g/mL for PAO1 and 0.004 μ g/mL for $\Delta tamB \Delta yhdP \Delta ydbH$). Exponential phase cells were harvested by centrifugation and resuspended in 5 mM HEPES (pH 7.2) at $OD_{600} = 3$. Equal volumes (150 μ L) of HEPES solution containing or not PI (40 μ g/ml) or NPN (20 μ M) and the bacterial suspensions were mixed, and 100 μ L of each sample was aliquoted on a black flat-bottom 96-well plate. OD_{600} and fluorescence were measured in a Tecan Spark 10M microtiter plate reader (excitation at 350 nm and emission at 420 nm for NPN; excitation at 580 nm and emission at 620 nm for PI) after 2 min at room temperature,

subtracted of the background values of samples without NPN or PI, and normalized to the OD₆₀₀ of the cell suspension (76).

MIC assays

The MIC of antibiotics (vancomycin and colistin) or the LpxC inhibitor PF-5081090 were determined through the broth microdilution method. *P. aeruginosa* strains precultured in MH were refreshed in the same medium at ca. 5×10^5 cells/mL in the presence of increasing concentrations of each antibiotic/compound. MIC was recorded after 20 h at 37°C. At least three independent experiments were performed for each strain/compound.

Bioinformatic analyses

TMHs were predicted using the online tool TMHMM 2.0 (<https://services.health-tech.dtu.dk/services/TMHMM-2.0/>) (77). Predicted 3D structures were retrieved from the AlphaFold Protein Structure Database (<https://alphafold.ebi.ac.uk/>) (28). Orthologs within the *Pseudomonas* genus were identified using the Ortholog Group Members function of the *Pseudomonas* Genome Database (<https://pseudomonas.com/>) (78). Putative structural homologs of PA4735 were searched with Foldseek (<https://search.foldseek.com/search>) (79), by using the PDB downloaded by the AlphaFold Database as query.

Statistical analysis

Statistical analysis was performed with the software GraphPad InStat, using the unpaired t test or the ANOVA test as indicated.

ACKNOWLEDGMENTS

This work was supported by the Italian Ministry of University and Research (MUR) with the grants Excellence Departments (art. 1, commi 314–337 Legge 232/2016) to the Department of Science of the University Roma Tre, PRIN 2017 to P.V. and F.I. (Prot. 20177J5Y3P), PRIN 2020 to F.I. and P.S. (Prot. 20208LLXEJ) and L.L. (Prot. 202089LLEH), and PRIN 2022 to G.R. (Prot. 20224BYR59).

The authors also acknowledge the support of NBFC to the Department of Science of the University Roma Tre (MUR PNRR, Project CN00000033). The funders had no role in the study design, data collection and interpretation, or the decision to submit the work for publication.

AUTHOR AFFILIATIONS

¹Department of Science, University Roma Tre, Rome, Italy

²Department of Pharmacological and Biomolecular Sciences, University of Milano, Milan, Italy

³NBFC, National Biodiversity Future Center, Palermo, Italy

⁴IRCCS Fondazione Santa Lucia, Rome, Italy

PRESENT ADDRESS

Jessica Mercolino, ReiThera Srl, Rome, Italy

Luisa Torrini, Sapienza University of Rome, Rome, Italy

AUTHOR ORCIDs

Paola Sperandeo  <http://orcid.org/0000-0001-9573-5672>

Massimiliano Lucidi  <http://orcid.org/0000-0003-3238-9164>

Giordano Rampioni  <http://orcid.org/0000-0002-1735-8565>

Paolo Visca  <http://orcid.org/0000-0002-6128-7039>

Francesco Imperi  <http://orcid.org/0000-0001-5080-5665>

FUNDING

Funder	Grant(s)	Author(s)
Italian Ministry of University and Research	Excellence Departments	Livia Leoni Giordano Rampioni Paolo Visca Francesco Imperi
Italian Ministry of University and Research	PRIN 2017 - 20177J5Y3P	Paolo Visca Francesco Imperi
Italian Ministry of University and Research	PRIN 2020 - 20208LLXEJ	Paola Sperandeo Francesco Imperi
Italian Ministry of University and Research	PRIN 2020 - 202089LLEH	Livia Leoni
Italian Ministry of University and Research	PRIN 2022 - 20224BYR59	Giordano Rampioni

AUTHOR CONTRIBUTIONS

Davide Sposato, Data curation, Formal analysis, Investigation, Methodology, Validation, Writing – original draft, Writing – review and editing | Jessica Mercolino, Conceptualization, Data curation, Formal analysis, Investigation, Methodology, Writing – review and editing | Luisa Torrini, Data curation, Investigation, Methodology, Writing – review and editing | Paola Sperandeo, Conceptualization, Funding acquisition, Writing – review and editing | Massimiliano Lucidi, Data curation, Investigation, Methodology, Writing – review and editing | Riccardo Alegiani, Investigation, Methodology, Writing – review and editing | Ilaria Varone, Investigation, Methodology, Writing – review and editing | Giorgia Molesini, Investigation, Methodology, Writing – review and editing | Livia Leoni, Funding acquisition, Writing – review and editing | Giordano Rampioni, Funding acquisition, Validation, Writing – review and editing | Paolo Visca, Funding acquisition, Project administration, Writing – review and editing | Francesco Imperi, Conceptualization, Data curation, Funding acquisition, Investigation, Methodology, Supervision, Writing – original draft, Writing – review and editing

ADDITIONAL FILES

The following material is available [online](#).

Supplemental Material

Supplemental figures and tables (mSphere00677-23-S0001.pdf). Tables S1 to S4 and Figures S1 to S5.

REFERENCES

- Silhavy TJ, Kahne D, Walker S. 2010. The bacterial cell envelope. *Cold Spring Harb Perspect Biol* 2:a000414. <https://doi.org/10.1101/cshperspect.a000414>
- Henderson JC, Zimmerman SM, Crofts AA, Boll JM, Kuhns LG, Herrera CM, Trent MS. 2016. The power of asymmetry: architecture and assembly of the gram-negative outer membrane lipid bilayer. *Annu Rev Microbiol* 70:255–278. <https://doi.org/10.1146/annurev-micro-102215-095308>
- Nikaido H. 2003. Molecular basis of bacterial outer membrane permeability revisited. *Microbiol Mol Biol Rev* 67:593–656. <https://doi.org/10.1128/MMBR.67.4.593-656.2003>
- Sun J, Rutherford ST, Silhavy TJ, Huang KC. 2022. Physical properties of the bacterial outer membrane. *Nat Rev Microbiol* 20:236–248. <https://doi.org/10.1038/s41579-021-00638-0>
- Choi U, Lee CR. 2019. Antimicrobial agents that inhibit the outer membrane assembly machines of gram-negative bacteria. *J Microbiol Biotechnol* 29:1–10. <https://doi.org/10.4014/jmb.1804.03051>
- Walker SS, Black TA. 2021. Are outer-membrane targets the solution for MDR gram-negative bacteria. *Drug Discov Today* 26:2152–2158. <https://doi.org/10.1016/j.drudis.2021.03.027>
- Sperandeo P, Martorana AM, Zaccaria M, Polissi A. 2023. Targeting the LPS export pathway for the development of novel therapeutics. *Biochim Biophys Acta Mol Cell Res* 1870:119406. <https://doi.org/10.1016/j.bbamcr.2022.119406>
- Lehman KM, Grabowicz M. 2019. Countering gram-negative antibiotic resistance: recent progress in disrupting the outer membrane with novel

- therapeutics. *Antibiotics* (Basel) 8:163. <https://doi.org/10.3390/antibiotics8040163>
9. Wesseling CMJ, Martin NI. 2022. Synergy by perturbing the gram-negative outer membrane: opening the door for gram-positive specific antibiotics. *ACS Infect Dis* 8:1731–1757. <https://doi.org/10.1021/acscinfdis.2c00193>
 10. Zückert WR. 2014. Secretion of bacterial lipoproteins: through the cytoplasmic membrane, the periplasm and beyond. *Biochim Biophys Acta* 1843:1509–1516. <https://doi.org/10.1016/j.bbamcr.2014.04.022>
 11. Allen WJ, Collinson I. 2023. A unifying mechanism for protein transport through the core bacterial Sec machinery. *Open Biol* 13:230166. <https://doi.org/10.1098/rsob.230166>
 12. Konovalova A, Kahne DE, Silhavy TJ. 2017. Outer membrane biogenesis. *Annu Rev Microbiol* 71:539–556. <https://doi.org/10.1146/annurev-micro-090816-093754>
 13. Troman L, Collinson I. 2021. Pushing the envelope: the mysterious journey through the bacterial secretory machinery, and beyond. *Front Microbiol* 12:782900. <https://doi.org/10.3389/fmicb.2021.782900>
 14. Okuda S, Tokuda H. 2011. Lipoprotein sorting in bacteria. *Annu Rev Microbiol* 65:239–259. <https://doi.org/10.1146/annurev-micro-090110-102859>
 15. Grabowicz M. 2019. Lipoproteins and their trafficking to the outer membrane. *EcoSal Plus* 8. <https://doi.org/10.1128/ecosalplus.ESP-0038-2018>
 16. Okuda S, Sherman DJ, Silhavy TJ, Ruiz N, Kahne D. 2016. Lipopolysaccharide transport and assembly at the outer membrane: The PEZ model. *Nat Rev Microbiol* 14:337–345. <https://doi.org/10.1038/nrmicro.2016.25>
 17. Sperandeo P, Martorana AM, Polissi A. 2019. Lipopolysaccharide biosynthesis and transport to the outer membrane of gram-negative bacteria. *Subcell Biochem* 92:9–37. https://doi.org/10.1007/978-3-030-18768-2_2
 18. Powers MJ, Trent MS. 2019. Intermembrane transport: glycerophospholipid homeostasis of the gram-negative cell envelope. *Proc Natl Acad Sci U S A* 116:17147–17155. <https://doi.org/10.1073/pnas.1902026116>
 19. Yeow J, Chng SS. 2022. Of zones, bridges and chaperones - phospholipid transport in bacterial outer membrane assembly and homeostasis. *Microbiology (Reading)* 168. <https://doi.org/10.1099/mic.0.001177>
 20. Malinverni JC, Silhavy TJ. 2009. An ABC transport system that maintains lipid asymmetry in the gram-negative outer membrane. *Proc Natl Acad Sci U S A* 106:8009–8014. <https://doi.org/10.1073/pnas.0903229106>
 21. Low WY, Chng SS. 2021. Current mechanistic understanding of Intermembrane lipid trafficking important for maintenance of bacterial outer membrane lipid asymmetry. *Curr Opin Chem Biol* 65:163–171. <https://doi.org/10.1016/j.cbpa.2021.09.004>
 22. Ruiz N, Davis RM, Kumar S. 2021. YhdP, TamB, and YdbH are redundant but essential for growth and lipid homeostasis of the gram-negative outer membrane. *mBio* 12:e0271421. <https://doi.org/10.1128/mBio.02714-21>
 23. Douglass MV, McLean AB, Trent MS. 2022. Absence of YhdP, TamB, and YdbH leads to defects in glycerophospholipid transport and cell morphology in gram-negative bacteria. *PLoS Genet* 18:e1010096. <https://doi.org/10.1371/journal.pgen.1010096>
 24. Grimm J, Shi H, Wang W, Mitchell AM, Wingreen NS, Huang KC, Silhavy TJ. 2020. The inner membrane protein YhdP modulates the rate of anterograde phospholipid flow in *Escherichia coli*. *Proc Natl Acad Sci U S A* 117:26907–26914. <https://doi.org/10.1073/pnas.2015556117>
 25. Levine TP. 2019. Remote homology searches identify bacterial homologues of eukaryotic lipid transfer proteins, including chordin-N domains in TamB and AsmA and Mdm31p. *BMC Mol Cell Biol* 20:43. <https://doi.org/10.1186/s12860-019-0226-z>
 26. Kumar S, Ruiz N. 2023. Bacterial AsmA-like proteins: bridging the gap in Intermembrane phospholipid transport. *Contact (Thousand Oaks)* 6:25152564231185931. <https://doi.org/10.1177/25152564231185931>
 27. Melia TJ, Reinisch KM. 2022. A possible role for VPS13-family proteins in bulk lipid transfer, membrane expansion and organelle biogenesis. *J Cell Sci* 135:jcs259357. <https://doi.org/10.1242/jcs.259357>
 28. Jumper J, Evans R, Pritzel A, Green T, Figurnov M, Ronneberger O, Tunyasuvunakool K, Bates R, Židek A, Potapenko A, et al. 2021. Highly accurate protein structure prediction with alphafold. *Nature* 596:583–589. <https://doi.org/10.1038/s41586-021-03819-2>
 29. Dong H, Tang X, Zhang Z, Dong C. 2017. Structural insight into lipopolysaccharide transport from the gram-negative bacterial inner membrane to the outer membrane. *Biochim Biophys Acta Mol Cell Biol Lipids* 1862:1461–1467. <https://doi.org/10.1016/j.bbalip.2017.08.003>
 30. Hicks G, Jia Z. 2018. Structural basis for the lipopolysaccharide export activity of the bacterial lipopolysaccharide transport system. *Int J Mol Sci* 19:2680. <https://doi.org/10.3390/ijms19092680>
 31. Munguia J, LaRock DL, Tsunemoto H, Olson J, Cornax I, Pogliano J, Nizet V. 2017. The Mla pathway is critical for *Pseudomonas aeruginosa* resistance to outer membrane permeabilization and host innate immune clearance. *J Mol Med (Berl)* 95:1127–1136. <https://doi.org/10.1007/s00109-017-1579-4>
 32. Lee KM, Lee K, Go J, Park IH, Shin JS, Choi JY, Kim HJ, Yoon SS. 2017. A genetic screen reveals novel targets to render *Pseudomonas aeruginosa* sensitive to lysozyme and cell wall-targeting antibiotics. *Front Cell Infect Microbiol* 7:59. <https://doi.org/10.3389/fcimb.2017.00059>
 33. Olaitan AO, Morand S, Rolain JM. 2014. Mechanisms of polymyxin resistance: acquired and intrinsic resistance in bacteria. *Front Microbiol* 5:643. <https://doi.org/10.3389/fmicb.2014.00643>
 34. Lo Sciuto A, Cervoni M, Stefanelli R, Mancone C, Imperi F. 2020. Effect of lipid A aminoarabinylation on *Pseudomonas aeruginosa* colistin resistance and fitness. *Int J Antimicrob Agents* 55:105957. <https://doi.org/10.1016/j.ijantimicag.2020.105957>
 35. Spinnato MC, Lo Sciuto A, Mercolino J, Lucidi M, Leoni L, Rampioni G, Visca P, Imperi F. 2022. Effect of a defective clamp loader complex of DNA polymerase III on growth and SOS response in *Pseudomonas aeruginosa*. *Microorganisms* 10:423. <https://doi.org/10.3390/microorganisms10020423>
 36. Kwon JY, Kim MK, Mereuta L, Seo CH, Luchian T, Park Y. 2019. Mechanism of action of antimicrobial peptide P5 truncations against *Pseudomonas aeruginosa* and *Staphylococcus aureus*. *AMB Express* 9:122. <https://doi.org/10.1186/s13568-019-0843-0>
 37. Ma B, Fang C, Zhang J, Wang M, Luo X, Hou Z. 2020. Contemporaneous measurement of outer and inner membrane permeability in gram-negative bacteria. *Bio Protoc* 10:e3548. <https://doi.org/10.21769/BioProtoc.3548>
 38. Yao Z, Davis RM, Kishony R, Kahne D, Ruiz N. 2012. Regulation of cell size in response to nutrient availability by fatty acid biosynthesis in *Escherichia coli*. *Proc Natl Acad Sci U S A* 109:E2561–8. <https://doi.org/10.1073/pnas.1209742109>
 39. Vadia S, Tse JL, Lucena R, Yang Z, Kellogg DR, Wang JD, Levin PA. 2017. Fatty acid availability sets cell envelope capacity and dictates microbial cell size. *Curr Biol* 27:1757–1767. <https://doi.org/10.1016/j.cub.2017.05.076>
 40. Ogura T, Inoue K, Tatsuta T, Suzaki T, Karata K, Young K, Su LH, Fierke CA, Jackman JE, Raetz CR, Coleman J, Tomoyasu T, Matsuzawa H. 1999. Balanced biosynthesis of major membrane components through regulated degradation of the committed enzyme of lipid A biosynthesis by the AAA protease FtsH (HflB) in *Escherichia coli*. *Mol Microbiol* 31:833–844. <https://doi.org/10.1046/j.1365-2958.1999.01221.x>
 41. Simpson BW, Douglass MV, Trent MS. 2020. Restoring balance to the outer membrane: YejM's role in LPS regulation. *mBio* 11:e02624-20. <https://doi.org/10.1128/mBio.02624-20>
 42. Sperandeo P, Cescutti R, Villa R, Di Benedetto C, Candia D, Dehò G, Polissi A. 2007. Characterization of *lptA* and *lptB*, two essential genes implicated in lipopolysaccharide transport to the outer membrane of *Escherichia coli*. *J Bacteriol* 189:244–253. <https://doi.org/10.1128/JB.01126-06>
 43. Tomaras AP, McPherson CJ, Kuhn M, Carifa A, Mullins L, George D, Desbonnet C, Eidem TM, Montgomery JI, Brown MF, Reilly U, Miller AA, O'Donnell JP. 2014. LpxC inhibitors as new antibacterial agents and tools for studying regulation of lipid A biosynthesis in gram-negative pathogens. *mBio* 5:e01551-14. <https://doi.org/10.1128/mBio.01551-14>
 44. Lo Sciuto A, Martorana AM, Fernández-Piñar R, Mancone C, Polissi A, Imperi F. 2018. *Pseudomonas aeruginosa* LptE is crucial for LptD assembly, cell envelope integrity, antibiotic resistance and virulence. *Virulence* 9:1718–1733. <https://doi.org/10.1080/21505594.2018.1537730>
 45. Fernández-Piñar R, Lo Sciuto A, Rossi A, Ranucci S, Bragonzi A, Imperi F. 2015. *In vitro* and *in vivo* screening for novel essential cell-envelope proteins in *Pseudomonas aeruginosa*. *Sci Rep* 5:17593. <https://doi.org/10.1038/srep17593>

46. Selkrig J, Belousoff MJ, Headey SJ, Heinz E, Shiota T, Shen H-H, Beckham SA, Bamert RS, Phan M-D, Schembri MA, Wilce MCJ, Scanlon MJ, Strugnell RA, Lithgow T. 2015. Conserved features in TamA enable interaction with TamB to drive the activity of the translocation and assembly module. *Sci Rep* 5:12905. <https://doi.org/10.1038/srep12905>
47. Selkrig J, Mosbahi K, Webb CT, Belousoff MJ, Perry AJ, Wells TJ, Morris F, Leyton DL, Totsika M, Phan MD, Celik N, Kelly M, Oates C, Hartland EL, Robins-Browne RM, Ramarathinam SH, Purcell AW, Schembri MA, Strugnell RA, Henderson IR, Walker D, Lithgow T. 2012. Discovery of an archetypal protein transport system in bacterial outer membranes. *Nat Struct Mol Biol* 19:506–510. <https://doi.org/10.1038/nsmb.2261>
48. Stubenrauch C, Belousoff MJ, Hay ID, Shen HH, Lillington J, Tuck KL, Peters KM, Phan MD, Lo AW, Schembri MA, Strugnell RA, Waksman G, Lithgow T. 2016. Effective assembly of fimbriae in *Escherichia coli* depends on the translocation assembly module nanomachine. *Nat Microbiol* 1:16064. <https://doi.org/10.1038/nmicrobiol.2016.64>
49. Bialer MG, Ruiz-Ranwez V, Sycz G, Estein SM, Russo DM, Altabe S, Siera R, Zorreguieta A. 2019. MapB, the *Brucella suis* TamB homologue, is involved in cell envelope biogenesis, cell division and virulence. *Sci Rep* 9:2158. <https://doi.org/10.1038/s41598-018-37668-3>
50. Smith KP, Fields JG, Voogt RD, Deng B, Lam YW, Mintz KP. 2015. Alteration in abundance of specific membrane proteins of *Aggregatibacter Actinomycetemcomitans* is attributed to deletion of the inner membrane protein MorC. *Proteomics* 15:1859–1867. <https://doi.org/10.1002/pmic.201400505>
51. Smith KP, Voogt RD, Ruiz T, Mintz KP. 2016. The conserved carboxyl domain of MorC, an inner membrane protein of *Aggregatibacter actinomycetemcomitans*, is essential for membrane function. *Mol Oral Microbiol* 31:43–58. <https://doi.org/10.1111/omi.12120>
52. Yu J, Li T, Dai S, Weng Y, Li J, Li Q, Xu H, Hua Y, Tian B. 2017. A *tamB* Homolog is involved in maintenance of cell envelope integrity and stress resistance of *Deinococcus radiodurans*. *Sci Rep* 7:45929. <https://doi.org/10.1038/srep45929>
53. Li MF, Jia BB, Sun YY, Sun L. 2020. The translocation and assembly module (TAM) of *Edwardsiella tarda* is essential for stress resistance and host infection. *Front Microbiol* 11:1743. <https://doi.org/10.3389/fmicb.2020.01743>
54. Ramezanifard R, Golubeva YA, Palmer AD, Slauch JM. 2023. TamAB is regulated by PhoPQ and functions in outer membrane homeostasis during *Salmonella* pathogenesis. *J Bacteriol* 205:e0018323. <https://doi.org/10.1128/jb.00183-23>
55. Grasekamp KP, Beaud Benyahya B, Taib N, Audrain B, Bardiaux B, Rossez Y, Izadi-Pruneyre N, Lejeune M, Trivelli X, Chouit Z, Guerardel Y, Ghigo JM, Gribaldo S, Beloin C. 2023. The Mla system of diderm firmicute *Veillonella parvula* reveals an ancestral transenvelope bridge for phospholipid trafficking. *Nat Commun* 14:7642. <https://doi.org/10.1038/s41467-023-43411-y>
56. Deng M, Misra R. 1996. Examination of AsmA and its effect on the assembly of *Escherichia coli* outer membrane proteins. *Mol Microbiol* 21:605–612. <https://doi.org/10.1111/j.1365-2958.1996.tb02568.x>
57. Bamert RS, Lundquist K, Hwang H, Webb CT, Shiota T, Stubenrauch CJ, Belousoff MJ, Goode RJA, Schittenhelm RB, Zimmerman R, Jung M, Gumbart JC, Lithgow T. 2017. Structural basis for substrate selection by the translocation and assembly module of the β -barrel assembly machinery. *Mol Microbiol* 106:142–156. <https://doi.org/10.1111/mmi.13757>
58. Noinaj N, Gumbart JC, Buchanan SK. 2017. The β -barrel assembly machinery in motion. *Nat Rev Microbiol* 15:197–204. <https://doi.org/10.1038/nrmicro.2016.191>
59. Stubenrauch CJ, Lithgow T. 2019. The TAM: a translocation and assembly module of the β -barrel assembly machinery in bacterial outer membranes. *EcoSal Plus* 8. <https://doi.org/10.1128/ecosalplus.ESP-0036-2018>
60. Heinz E, Selkrig J, Belousoff MJ, Lithgow T. 2015. Evolution of the translocation and assembly module (TAM). *Genome Biol Evol* 7:1628–1643. <https://doi.org/10.1093/gbe/evv097>
61. Smith HC, May KL, Grabowicz M. 2023. Teasing apart the evolution of lipoprotein trafficking in gram-negative bacteria reveals a bifunctional LolA. *Proc Natl Acad Sci U S A* 120:e2218473120. <https://doi.org/10.1073/pnas.2218473120>
62. Bei W, Luo Q, Shi H, Zhou H, Zhou M, Zhang X, Huang Y. 2022. Cryo-EM structures of LolCDE reveal the molecular mechanism of bacterial lipoprotein sorting in *Escherichia coli*. *PLoS Biol* 20:e3001823. <https://doi.org/10.1371/journal.pbio.3001823>
63. Li Y, Orlando BJ, Liao M. 2019. Structural basis of lipopolysaccharide extraction by the LptB2FGC complex. *Nature* 567:486–490. <https://doi.org/10.1038/s41586-019-1025-6>
64. Owens TW, Taylor RJ, Pahil KS, Bertani BR, Ruiz N, Kruse AC, Kahne D. 2019. Structural basis of unidirectional export of lipopolysaccharide to the cell surface. *Nature* 567:550–553. <https://doi.org/10.1038/s41586-019-1039-0>
65. Tang X, Chang S, Luo Q, Zhang Z, Qiao W, Xu C, Zhang C, Niu Y, Yang W, Wang T, Zhang Z, Zhu X, Wei X, Dong C, Zhang X, Dong H. 2019. Cryo-EM structures of lipopolysaccharide transporter LptB2FGC in lipopolysaccharide or AMP-PNP-bound states reveal its transport mechanism. *Nat Commun* 10:4175. <https://doi.org/10.1038/s41467-019-11977-1>
66. Lees JA, Reinisch KM. 2020. Inter-organelle lipid transfer: a channel model for Vps13 and chorein-N motif proteins. *Curr Opin Cell Biol* 65:66–71. <https://doi.org/10.1016/jceb.2020.02.008>
67. Milton DL, O'Toole R, Horstedt P, Wolf-Watz H. 1996. Flagellin A is essential for the virulence of *Vibrio anguillarum*. *J Bacteriol* 178:1310–1319. <https://doi.org/10.1128/jb.178.5.1310-1319.1996>
68. Lo Sciuto A, Spinnato MC, Pasqua M, Imperi F. 2022. Generation of stable and unmarked conditional mutants in *Pseudomonas aeruginosa*. *Methods Mol Biol* 2548:21–35. https://doi.org/10.1007/978-1-0716-2581-1_2
69. Meisner J, Goldberg JB. 2016. The *Escherichia coli* *rhaSR-PrhaBAD* inducible promoter system allows tightly controlled gene expression over a wide range in *Pseudomonas aeruginosa*. *Appl Environ Microbiol* 82:6715–6727. <https://doi.org/10.1128/AEM.02041-16>
70. Hoang TT, Karkhoff-Schweizer RR, Kutchma AJ, Schweizer HP. 1998. A broad-host-range FLP-FRT recombination system for site-specific excision of chromosomally-located DNA sequences: application for isolation of unmarked *Pseudomonas aeruginosa* mutants. *Gene* 212:77–86. [https://doi.org/10.1016/s0378-1119\(98\)00130-9](https://doi.org/10.1016/s0378-1119(98)00130-9)
71. Heeb S, Blumer C, Haas D. 2002. Regulatory RNA as mediator in GacA/RsmA-dependent global control of exoproduct formation in *Pseudomonas fluorescens* CHAO. *J Bacteriol* 184:1046–1056. <https://doi.org/10.1128/jb.184.4.1046-1056.2002>
72. Lo Sciuto A, Fernández-Piñar R, Bertuccini L, Iosi F, Superti F, Imperi F. 2014. The periplasmic protein TolB as a potential drug target in *Pseudomonas aeruginosa*. *PLoS One* 9:e103784. <https://doi.org/10.1371/journal.pone.0103784>
73. Kaimer C, Schenk K, Graumann PL. 2011. Two DNA translocases synergistically affect chromosome dimer resolution in *Bacillus subtilis*. *J Bacteriol* 193:1334–1340. <https://doi.org/10.1128/JB.00918-10>
74. Nichele L, Persichetti V, Lucidi M, Cincotti G. 2020. Quantitative evaluation of imageJ thresholding algorithms for microbial cell counting. *OSA Continuum* 3:1417. <https://doi.org/10.1364/OSAC.393971>
75. Schneider CA, Rasband WS, Eliceiri KW. 2012. NIH image to imageJ: 25 years of image analysis. *Nat Methods* 9:671–675. <https://doi.org/10.1038/nmeth.2089>
76. Cervoni M, Lo Sciuto A, Bianchini C, Mancone C, Imperi F. 2021. Exogenous and endogenous phosphoethanolamine transferases differently affect colistin resistance and fitness in *Pseudomonas aeruginosa*. *Front Microbiol* 12:778968. <https://doi.org/10.3389/fmicb.2021.778968>
77. Krogh A, Larsson B, von Heijne G, Sonnhammer EL. 2001. Predicting transmembrane protein topology with a hidden Markov model: application to complete genomes. *J Mol Biol* 305:567–580. <https://doi.org/10.1006/jmbi.2000.4315>
78. Winsor GL, Griffiths EJ, Lo R, Dhillon BK, Shay JA, Brinkman FSL. 2016. Enhanced annotations and features for comparing thousands of *Pseudomonas* genomes in the *Pseudomonas* genome database. *Nucleic Acids Res* 44:D646–53. <https://doi.org/10.1093/nar/gkv1227>
79. van Kempen M, Kim SS, Tumescheit C, Mirdita M, Lee J, Gilchrist CLM, Söding J, Steinegger M. 2023. Fast and accurate protein structure search with Foldseek. *Nat Biotechnol*. <https://doi.org/10.1038/s41587-023-01773-0>