


A spectacular jet from the bright 244–440 Orion proplyd: The MUSE NFM view[★]

A. Kirwan¹ , C. F. Manara², E. T. Whelan¹, M. Robberto^{3,4}, A. F. McLeod^{5,6}, S. Facchini⁷, G. Beccari²,
A. Miotello², P. C. Schneider⁸, A. Murphy¹, and S. Vicente⁹

¹ Maynooth University Department of Experimental Physics, National University of Ireland Maynooth, Maynooth Co. Kildare, Ireland
e-mail: andrew.miller@mu.ie

² European Southern Observatory, Karl-Schwarzschild-Strasse 2, 85748, Garching bei München, Germany

³ Johns Hopkins University, 3400 N. Charles Street, Baltimore, MD 21218, USA

⁴ Space Telescope Science Institute, 3700 San Martin Dr, Baltimore, MD 21218, USA

⁵ Centre for Extragalactic Astronomy, Department of Physics, Durham University, South Road, Durham DH1 3LE, UK

⁶ Institute for Computational Cosmology, Department of Physics, University of Durham, South Road, Durham DH1 3LE, UK

⁷ Dipartimento di Fisica, Università degli Studi di Milano, via Celoria 16, 20133 Milano, Italy

⁸ Hamburger Sternwarte, Universität Hamburg, Gojenbergsweg 112, 21029 Hamburg, Germany

⁹ Instituto de Astrofísica e Ciências do Espaço, Universidade de Lisboa, OAL, Tapada da Ajuda, 1349-018 Lisboa, Portugal

Received 10 November 2022 / Accepted 25 February 2023

ABSTRACT

In this work we present the highest spatial and spectral resolution integral field observations to date of the bipolar jet from the Orion proplyd 244–440 using Multi-Unit Spectroscopic Explorer (MUSE) narrow-field mode (NFM) observations on the Very Large Telescope (VLT). We observed a previously unreported chain of six distinct knots in a roughly S-shaped pattern, and by comparing them with *Hubble* Space Telescope (HST) images we estimated proper motions in the redshifted knots of 9.5 mas yr^{-1} with an inclination angle of 73° , though these quantities could not be measured for the blueshifted lobe. Analysis of the [Fe II] and [Ni II] lines suggests jet densities on the order of $\sim 10^5 \text{ cm}^{-3}$. We propose that the observed S-shaped morphology originates from a jet launched by a smaller source with $M_\star < 0.2 M_\odot$ in orbital motion around a larger companion of $M_\star \approx 0.5 M_\odot$ at a separation of 30–40 au. The measured luminosities of the knots using the [O I] $\lambda 6300 \text{ \AA}$ and [S II] $\lambda 6731 \text{ \AA}$ lines were used to estimate a lower limit to the mass-loss rate in the jet of $1.3 \times 10^{-11} M_\odot \text{ yr}^{-1}$ and an upper limit of $10^{-9} M_\odot \text{ yr}^{-1}$, which is typical for low-mass driving sources. While the brightness asymmetry between the redshifted and blueshifted lobes is consistent with external irradiation, further analysis of the [Ni II] and [Fe II] lines suggests that photoionization of the jet is not likely to be a dominant factor, and that the emission is dominated by collisional excitation. The dynamical age of the jet compared to the anticipated survival time of the proplyd demonstrates that photoevaporation of the proplyd occurred prior to jet launching, and that this is still an active source. These two points suggest that the envelope of the proplyd may shield the jet from the majority of external radiation, and that photoionization of the proplyd does not appear to impact the ability of a star to launch a jet.

Key words. ISM: jets and outflows – ISM: individual objects: Orion Nebula – stars: pre-main sequence – protoplanetary disks
– stars: individual: 244-440

1. Introduction

Astrophysical jets are near-ubiquitous phenomena in the evolution of low- and intermediate-mass young stellar objects (YSOs, Frank et al. 2014), and have similarly been observed in high-mass YSOs as well (Marti et al. 1993; McLeod et al. 2018). The formation of clumpy, shock-heated condensations known as Herbig-Haro (HH) objects is linked with ejection events, and as such the study of these objects allows us to better understand the mass-loss history of the star. The morphology and physical conditions of the jets are determined by the characteristics of the ejection mechanism as well as by the surrounding environments: single, isolated stars may launch straight, bi-polar outflows, while driving sources in denser regions may experience side winds from more massive stars, possibly compounded with a

high proper motion, that induce a curvature in the jet (Bally & Reipurth 2001; Raga et al. 2009); in binary systems, companions may induce warping in the inner disk, precession, or orbital motion that causes a “wiggling” jet morphology (Masciadri & Raga 2002; Lai 2003; Murphy et al. 2021; Erkal et al. 2021; Kirwan et al. 2022).

The exact mechanism of jet launching is not known, but current research has found a strong correlation between ejection events and mass accretion and circumstellar disk dynamics (Ray & Ferreira 2021; Whelan 2014; Nisini et al. 2018). Studying such ejections in a variety of environments is crucial to fully understand the physics behind them. Regions such as the Orion Nebula Cluster (ONC) provide a unique laboratory for studying the early stages of star formation, due to the high stellar density and the relative closeness of the region ($d \sim 400 \text{ pc}$). Moreover, the environment allows for jets to be examined under the most extreme conditions.

Many YSOs within the ONC have been found to possess externally illuminated, photo-evaporating disks often

[★] Based on observations obtained with the MUSE spectrograph on the Very Large Telescope on Cerro Paranal (Chile), operated by the European Southern Observatory (ESO). Program ID: 0104.C-0963(A).

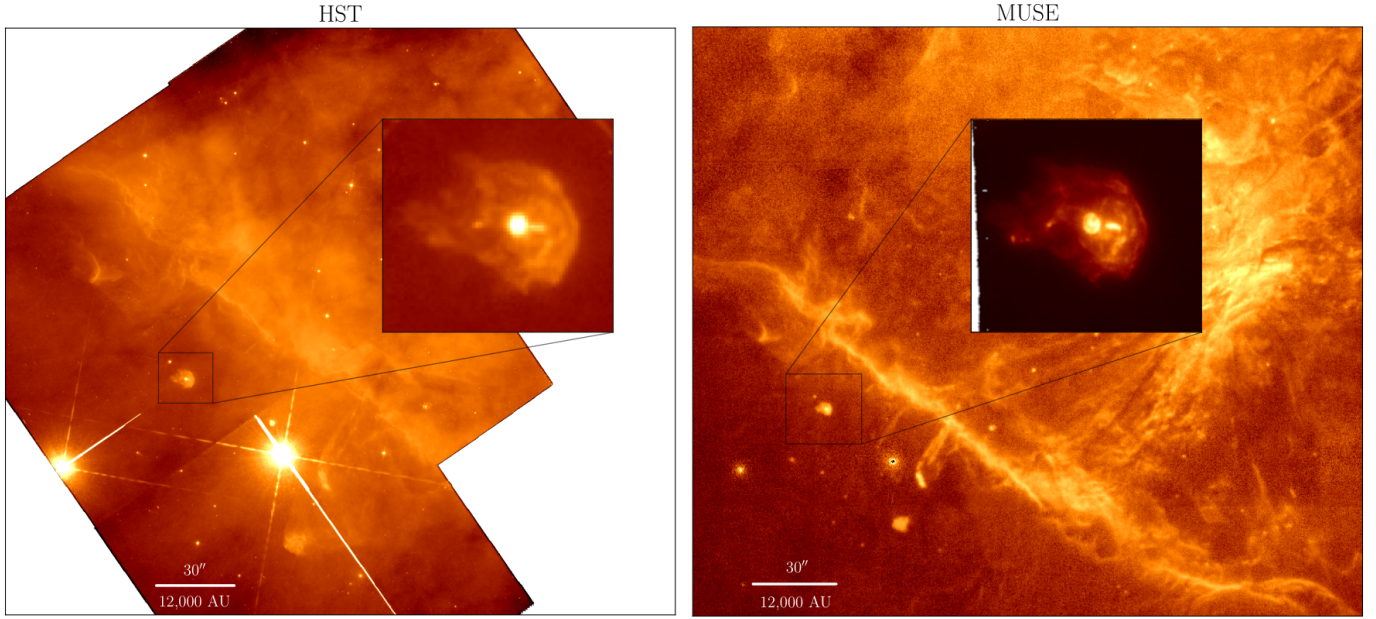


Fig. 1. HST (left) and MUSE (right) field images of the region around 244–440. The fields and insets in both images are shown in the $[\text{O I}]\lambda 6300 \text{ \AA}$ emission. The stars θ^2 Orionis A and B are seen just below the proplyd to the southwest and southeast, respectively. The inset in the MUSE panel is a flux-integrated image from our current NFM observations discussed in Sect. 2.1.

surrounded by nebular structures and ionization fronts (IFs). With the discovery of these “proplyds” (PROtoPLANetary DiskS) came the observations that many of them are associated with jets and HH objects (O’Dell et al. 1997; Bally & Reipurth 2001; Ricci et al. 2008). They typically are one-sided and exhibit a C-shaped curvature pointed away from the massive ionizing stars within the cluster. Proplyds in the dense, inner regions of the ONC present us with a lifetime problem as the measured mass-loss rates due to ultraviolet (UV) irradiation are too high and should rapidly evaporate the disk (Clarke 2007). However, near-infrared (NIR) excess is still observed in $\sim 80\%$ of the ONC stars, implying that their disks may survive longer than predicted. This implies that either initial disk masses are large ($>1 M_{\odot}$) and therefore unstable, or that the massive ionizing stars have ages ≤ 0.1 Myr, which is short compared to the region average (2–4 Myr, see Beccari et al. 2017). Estimates of disk masses in the inner regions of the ONC have not generally been larger than $10^{-2} M_{\odot}$ (Henney & O’Dell 1999), and more recent surveys with the Atacama Large Millimeter/submillimeter Array (ALMA) have indicated a maximum dust mass of $\sim 80 M_{\oplus}$ (Eisner et al. 2018). A combination of age spread and stellar dynamics, with the youngest stars migrating inward to the central regions, may help solve the lifetime discrepancy (Winter et al. 2019). This should have direct implications on the morphology of the jets and on the accretion-outflow connection in photoevaporated disks, granting deeper insights into the mechanics of jet launching and the impact of the environment.

The giant proplyd 244–440, known also as V* V2423 Ori and HH 524, is located at a distance of 400 ± 23 pc (Gaia Collaboration 2021). With a width of $3''.5$ (~ 1400 au), it is one of the largest proplyds in the ONC (Bally et al. 2000, hereafter BOM2000). It is not located in the inner core of the ONC, as its large IF of radius $\sim 2''.0$ (~ 800 au) points toward θ^2 Orionis A, located southwest of the proplyd and beyond the prominent photodissociation region (PDR) known as the “Orion Bar,” as shown in Fig. 1. *Hubble* Space Telescope (HST) images in $\text{H}\alpha$ were interpreted by Bally & Reipurth (2001) as showing a nearly

edge-on disk in silhouette with a size of approximately $0''.15 \times 0''.6$, and a tilted jet with a $\sim 15^{\circ}$ difference between the jet axis and the disk minor axis. BOM2000 further note that the star appears offset from the center of the disk by $\sim 0''.1$, and suggest a binary system where one star is hidden within the disk. Spectral observations of the source suggest that it is a low-mass star ($< 1 M_{\odot}$; see Appendix A).

Henney & O’Dell (1999) initially proposed a mass-loss rate for the proplyd of $\sim 1.5 \times 10^{-6} M_{\odot} \text{ yr}^{-1}$, although Winter et al. (2019) posit that this is an overestimation, suggesting instead a mass-loss rate on the order of $\sim 5 \times 10^{-8} M_{\odot} \text{ yr}^{-1}$. Direct estimates of the disk+envelope mass are difficult, but range from as high as $0.01 M_{\odot}$ (Bally et al. 1998) based on millimeter measurements, to as low as $\sim 5 \times 10^{-3} M_{\odot}$ with the VLA (Sheehan et al. 2016)¹. While the values of Bally et al. (1998) suggest evaporation times $t_e \sim 10^4$ yr (see also Henney & O’Dell 1999), those of Sheehan et al. (2016) and Winter et al. (2019) suggest $t_e \sim 0.1$ – 0.2 Myr, which ultimately set a lower limit on the age of the proplyd.

In this paper, we present the first detailed analysis of the bipolar jet associated with this proplyd. In Sect. 2, we discuss our MUSE data and data reduction process. In Sect. 3, we outline a proper motions study and offer an explanation of the complex curvature of the jet. The extinction, physical conditions, and mass-loss rate are estimated in Sect. 4. We discuss our results in Sect. 5 and provide a summary in Sect. 6.

2. Observations and data reduction

2.1. VLT/MUSE

Observations of proplyd 244–440 were obtained on 23 October 2019 with the Multi-Unit Spectroscopic Explorer (MUSE)

¹ We note that the VLA is free-free (FF) emission dominated, and while it is possible that the proplyds are FF dominated as well, this latter value is presented with caution.

under program ID 104.C-096 (PI: C. F. Manara). The instrument was operated in narrow field mode (NFM) with adaptive optics (AO) under clear sky conditions, which allows sampling of the target with a spatial resolution of $0''.025 \text{ pixel}^{-1}$. The image quality delivered by the AO system was measured in the data as $\sim 0''.14$. For at least 50% of the total observation, the coherence time was >6 ms. Data reduction was performed with the MUSE pipeline (v2.8) with ESO Reflex using standard calibrations and recipes (for a detailed description of the MUSE data reduction pipeline, see [Weilbacher et al. 2020](#)). Further details of the data reduction process will be described in a forthcoming paper. A final cube was produced spanning the entire nominal wavelength range of the MUSE instrument ($\sim 4750\text{--}9350 \text{ \AA}$), with a field of view (FOV) of $8''.4 \times 8''.6$.

This final cube was further processed in Python to remove local continuum and nebular contributions, using a method similar to that described by [Agra-Amboage et al. \(2009\)](#). For each spectral emission region of interest, a subcube spanning $\sim 100 \text{ \AA}$ was extracted from the primary cube and continuum-subtracted by fitting a second-order polynomial to the spectrum at each spaxel in the subcube (see [Kirwan et al. 2022](#), for a description of this process and considerations of the wavelength-dependence of the PSF). Additionally, to account for nebular background and foreground line emission we constructed a mean, local background spectrum for each subcube by sampling regions away from the proplyd envelope but close enough to be representative of the emission profile, and subtracted this from the subcube. Extinction was calculated using the Balmer decrement under Case B assumptions, which is further discussed in Sect. 4.1.

2.2. Archival HST images

Two epochs of archival HST Wide-Field Planetary Camera (WFPC2) images were used to estimate the proper motions of the knots (see Sect. 3.1). The observations were obtained on 14 November 1995 and 17 September 1998 as part of the General Observer programs GO 5976 (PI: J. Bally) and GO 6603 (PI: C. O'Dell), respectively. We have focused on the *F631N* ($[\text{O I}]\lambda 6300 \text{ \AA}$, both epochs) filters in this study, which have total exposure times $t_{\text{exp}} = 2100 \text{ s}$ and $t_{\text{exp}} = 1200 \text{ s}$ respectively. Additionally, GO 5976 has observations in the *F673N* ($t_{\text{exp}} = 2100 \text{ s}$) and *F791W* filters ($t_{\text{exp}} = 200 \text{ s}$), and GO 6603 has observations in the *F656N* ($t_{\text{exp}} = 600 \text{ s}$) and *F814W* filters ($t_{\text{exp}} = 60 \text{ s}$). The jet is seen in the *F631N* and *F673N* filters, while only the envelope is seen in the *F791W* and *F814W* filters. A description of the observations can be found in [O'Dell et al. \(1997\)](#)². To increase the S/N, we combined the $[\text{O I}]\lambda 6300 \text{ \AA}$ images for each epoch into two individual stacks. We then separately aligned each stack of images to its own common reference frame in Python using the `mpdaf`³ function `align_with_image`, and median-combined the two epochs separately. The jet-free images for each epoch were finally subtracted from the $[\text{O I}]\lambda 6300 \text{ \AA}$ images to better isolate the jet emission.

3. Morphology

3.1. Knot identification in the MUSE data

The angular size of the giant proplyd 244-440 and the spatial sampling of MUSE NFM+AO allow for a detailed view of the

bipolar jet, which is detected in multiple emission lines. In many cases, most notably the $[\text{O I}]$ emission, one observes both the jet and envelope. Lines such as $[\text{Fe II}]$ and $[\text{Ni II}]$ only show jet emission while others (e.g., $[\text{Ar III}]$) show the envelope and the ionization front. By comparing the different morphologies traced by different emission lines, it is possible to clearly identify the jet knots by removing the ‘‘contamination’’ by nebular and envelope emission (see Figs. A.2–A.4).

We have identified six distinct knots with relatively strong S/N (>10), and clumpy emission signatures at a low S/N (<5) in at least two additional places. Not all knots are visible in our integrated channel maps due to integration over the entire emission range, while they are more clearly seen in smaller velocity channel maps. High velocity channels also show unresolved emission within $0''.3$ ($\sim 120 \text{ au}$) of the source. This is shown in Figs. A.5 and A.6. We have adopted a simple notation scheme, with each knot labeled according to its distance from the driving source, that is to say knot E1 is furthest from the source in the eastern direction while W3 is the knot closest to the source in the western direction. Eastern knots are redshifted and western knots are blueshifted (see Fig. 2). We list the knot names and relative offsets from the source in Table 2.

3.2. Comparison with HST observations for proper motion study

Our MUSE observations were compared with archival HST data to examine the time evolution of the outflow. Blue-shifted western jet emission is seen in the *F631N* and *F673N* filters, and redshifted eastern jet emission is faintly seen in the *F631N* filter as shown in Fig. 3. In both epochs of archival observations, the western jet appears as a continuous stream, making proper motion estimations unreliable for those knots. However, the knots E1 and E3 are seen in the *F631N* images with the longer exposure times.

To estimate the positions of the redshifted knots, we performed centroid fitting to the knots E1 and E3 and to the stellar profiles in both the median $[\text{O I}]\lambda 6300 \text{ \AA}$ and residual $[\text{O I}]\lambda 6300 \text{ \AA}$ images using 2D Gaussian functions. The relative offsets in the x - and y -directions are listed in Table 3. There is the most uncertainty as to these offsets in the 1998 observations due to the low exposure times. Additionally, knot E1 is very faint in both HST epochs, resulting in larger uncertainties also for its position. Figure 4 shows the relative knot offsets as a function of observation time and the best-fit line through the data, providing a proper motion of $9.5 \pm 1.1 \text{ mas yr}^{-1}$, which corresponds to $\sim 15\text{--}19 \text{ km s}^{-1}$. This is in agreement with typical tangential velocities of HH objects in the ONC ($<50 \text{ km s}^{-1}$; see [Reiter et al. 2016](#)) and consistent with the values normally found in low-mass stars and substellar objects ([Whelan 2014](#); [Riaz et al. 2017](#)).

The radial velocity can be calculated from centroid fits of the knots at each emission line with respect to the ONC flow velocity, resulting in an average value of $v_{\text{rad}} = 56 \pm 10 \text{ km s}^{-1}$, and thus an absolute jet velocity of the same order, about 60 km s^{-1} . The resulting jet inclination angle $i_{\text{inc}} = \tan^{-1} v_{\text{rad}}/v_{\text{tan}} = 72.2^\circ \pm 4.2^\circ$ with respect to the plane of the sky is not consistent with the previous interpretations of a nearly edge-on disk, which would imply a much lower jet inclination. We discuss our interpretation of this in Sect. 5.1.

These values additionally allow us to estimate a lower limit on the dynamical age t_{dyn} of the knots. The knot E1 is the most distant knot with a deprojected distance of $\sim 2''.8$ ($\sim 1120 \text{ au}$) which yields $t_{\text{dyn}} \sim 300 \text{ yr}$.

² The science-ready data described here may be found on the MAST archive at <http://dx.doi.org/10.17909/y66h-8p10>

³ <https://github.com/musevlt/mpdaf>

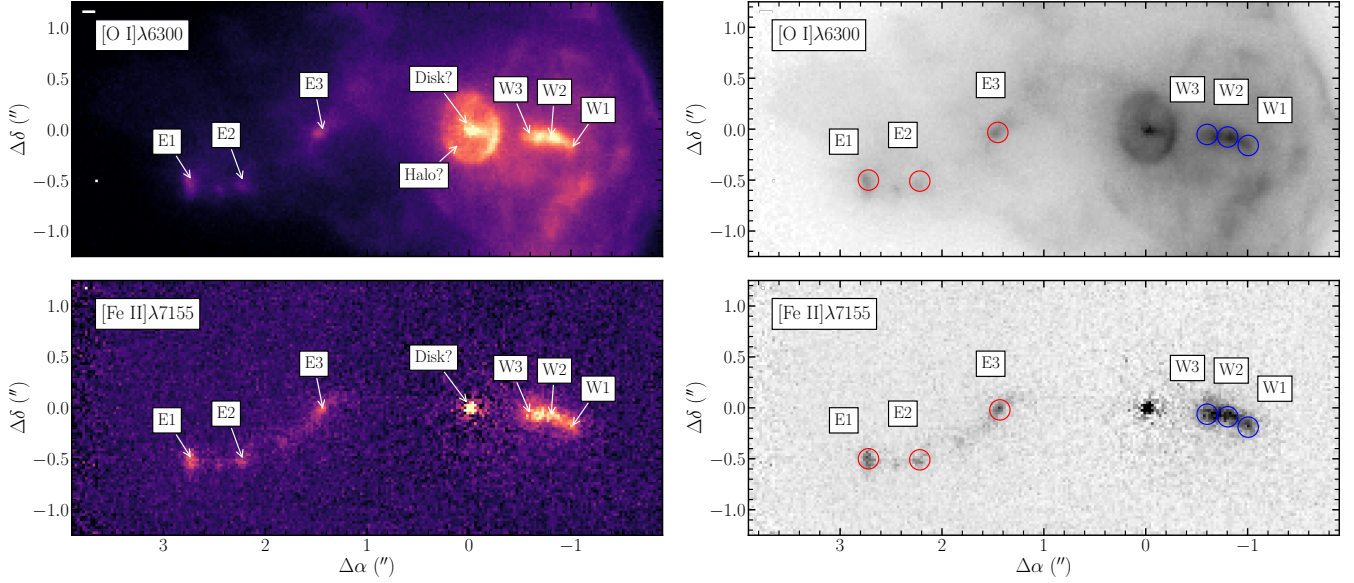


Fig. 2. Identified knots in the MUSE images. Left: the [O I] λ 6300 (top) and [Fe II] λ 7155 (bottom) emission lines with the tentative disk and halo noted in the [O I] panel. Emission is seen very close to the source, but whether this is the disk or the jet is undetermined. Right: the same images in grayscale, with the redshifted and blueshifted knots indicated by colored circles.

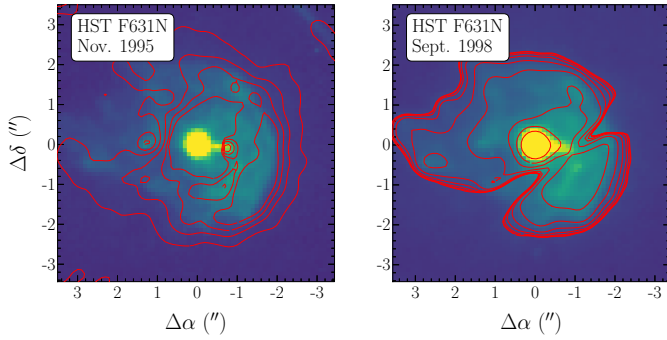


Fig. 3. Median combined $F631N$ images of the two HST epochs used in our proper motion study. The red contours are calculated from the residuals of the [O I] λ 6300 Å – continuum images. The “indented” structure (right image) is due to the presence of a large diffraction spike in one of the stacked images.

3.3. Jet curvature

Our data allow us to observe, for the first time, the redshifted jet and its strong curvature. The [O I] line shows the morphology of the jet and the direction of the ionization front. As θ^2 Ori A is the dominant ionization source east of the Orion Bar (O’Dell et al. 2017), one would expect it to contribute the greatest radiation. The radiation contribution from θ^2 Ori B is not as powerful but is likely not negligible. Indeed, in Fig. 2 we observe knot E3 in the redshifted jet with what may be a bow shock pointing approximately 50° north through east, congruent with a wind from Ori B, and the curvature traced by knots E2 and E1 appears to be in agreement with a strong wind from θ^2 Ori A that is deflected in part by a lesser wind from θ^2 Ori B.

Additionally, we see in Fig. 2 a distinct asymmetry in outflow scale, with the redshifted jet having a higher displacement than its blueshifted counterpart. As the eastern jet flows downstream with respect to θ^2 Ori A, it may be that crossing the photoionization front and associated shocks, or even puncturing through the envelope, highly disturbs the western jet.

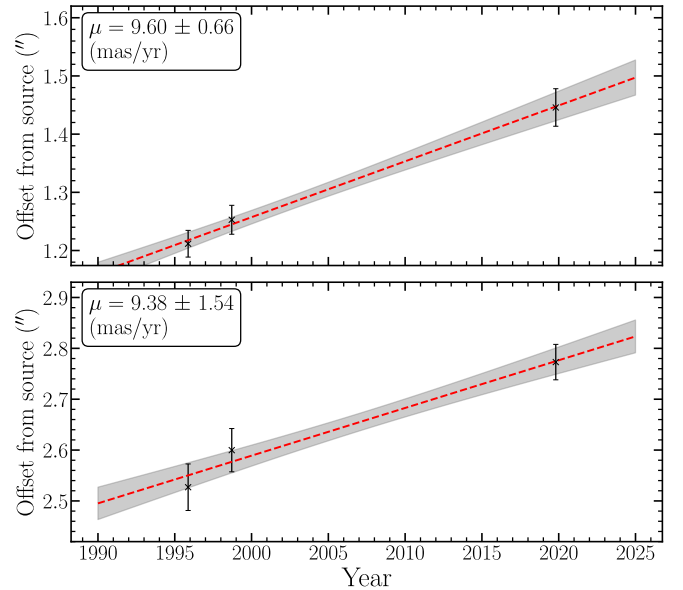


Fig. 4. Relative knot offsets for the three epochs of observations. A weighted least-squares fit is plotted in red and indicates a proper motion of 9.60 ± 0.66 mas yr $^{-1}$ for knot E3 (top) and 9.38 ± 1.54 mas yr $^{-1}$ for knot E1 (bottom). The filled gray bars indicate the 1σ uncertainty of the fits.

4. Physical properties of the jets

The environment of the Orion region presents a unique opportunity to examine the physical conditions of outflows and compare what we can observe in irradiated proplyds with what is known about more isolated outflow conditions. The electron densities and electron temperatures in the proplyd structure are key elements for determining the mass-loss rates of proplyds, and are integral in understanding the nature of stellar evolution (Ray & Ferreira 2021; Reipurth & Bally 2001). Accurate flux measurements are thus necessary to explore the physical conditions of

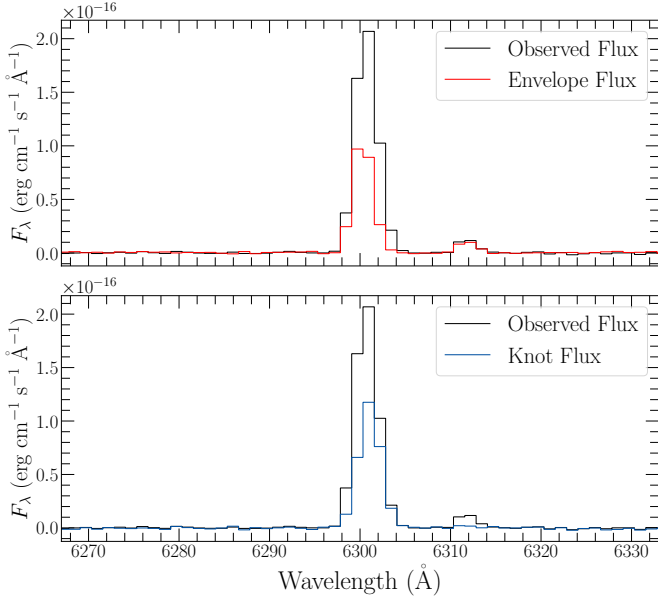


Fig. 5. Spectral profiles of the observed flux, envelope flux, and intrinsic knot flux. The top panel compares the observed and envelope contributions, while the bottom shows the observed and intrinsic residual. The spectra are of knot E3 extracted from the [O I] λ 6300 Å line.

the proplyd jets. In this section we discuss the role of extinction and examine emission line ratios to explore what diagnostic tools we can apply to this object.

In this analysis, we extracted knot fluxes using circular apertures ($r = 3$ pixels or $0''.075$) centered at the positions given in Table 2. These fluxes were then corrected for extinction, as discussed in Sect. 4.1. In lines where the observed flux is a combination of the knot and envelope emission, we used apertures of the same size to extract fluxes nearby in the envelope to estimate the proplyd contribution and subtract these from the knots. An example of this is shown in Fig. 5.

As discussed above, the physical conditions in the jet are key to understanding the evolution of the star. The difficulty posed by proplyds, however, is that their densities often exceed the critical limits of traditional diagnostic ratios, such as [S II], [O I], and [N II] (see Bally et al. 1998; Henney & Arthur 1998; Mesa-Delgado et al. 2012, for a deeper discussion). Additionally, such techniques as those proposed by Bacciotti & Eisloffel (1999, the so-called BE99 method) rely on ratios relative to H α . Because of the strength of the envelope emission in H α in our data, it was not possible to recover the knot fluxes in this line, and so we could not rely on the BE99 technique.

Alternative density-sensitive lines are seen in our data, primarily forbidden Fe lines, which can be a powerful diagnostic tool for tracing denser emission regions (Podio et al. 2006). Additionally we observe [Ni II] emissions, which can be used to probe fluorescent excitation as well (Lucy 1995; Giannini et al. 2015).

4.1. Extinction

Extinction plays a critical role in the analysis of the proplyd. Its quantification is further complicated by the role of extinction in the envelope of the proplyd as well as the photoevaporated and photoionized flow itself (Henney & O'Dell 1999; Mesa-Delgado et al. 2012), and the difficulty in determining what amount of nebular emission occurs in the forefront of or behind the proplyd

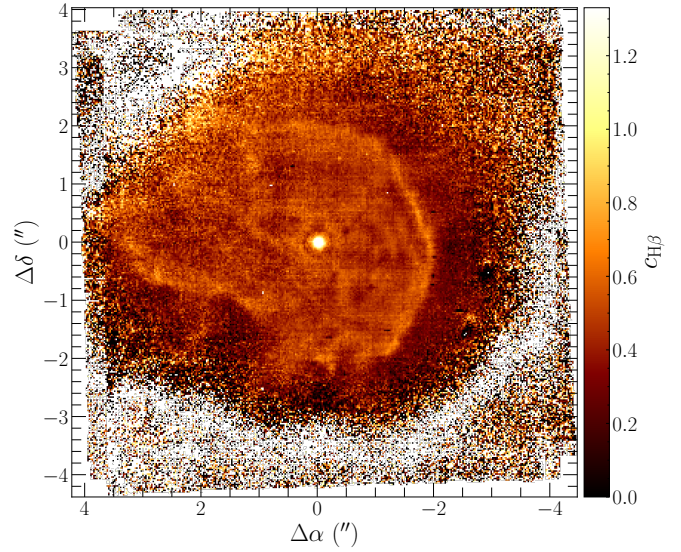


Fig. 6. Spatial distribution map of the line-of-sight $c(\text{H}\beta)$ coefficient for proplyd 244–440.

envelope. Since the dust within the proplyd is not well known, these issues make disentangling the intrinsic proplyd emission from the nebular cloud – and by extension, the jet from the envelope – a difficult procedure.

A few methods exist to explore this phenomenon, but for more general purposes we examined the simplest case. Using integrated channel maps of the Balmer lines (H α and H β), we constructed maps of the extinguished dust in the FOV. This ratio was chosen due to its weak density-dependence, making it well-suited to the analysis of the dense inner envelopes of the proplyds (Mesa-Delgado et al. 2012). We utilized the reddening curve of Cardelli et al. (1989) adapted for the optical regime by O'Donnell (1994) and assumed $R_V = 5.5$ (Weilbacher et al. 2015; McLeod et al. 2016). We further assumed under case-B assumptions an intrinsic H α /H β flux value of 2.86 (McLeod et al. 2015) and used the observed H α /H β ratio to produce pixel-by-pixel mappings of the $c(\text{H}\beta)$ reddening coefficient along the line of sight in PyNeb⁴ (see Fig. 6).

What we observe is that there is a clear morphological difference between background extinction and extinction due to dust in the proplyd envelope. In the case of 244–440, the envelope displays a clumpy but still fairly uniform structure, with the IF having the highest extinction. Examining the extinction in adjacent regions and within the proplyd we generally observe a higher extinction in the proplyd than in the nebula, which is in line with anticipations for a dusty envelope.

With this map, we selected regions adjacent to and within the proplyd to calculate a representative $c(\text{H}\beta)$ value. Under the assumption that foreground and adjacent background extinction is uniform, we estimated the intrinsic proplyd extinction $c(\text{H}\beta)_p$ as the difference between the nebular extinction ($c(\text{H}\beta) = 0.44$ – 0.45) and that of the proplyd envelope ($c(\text{H}\beta) \approx 0.6$) such that $c(\text{H}\beta)_p = 0.15$. This intrinsic reddening coefficient is similar to what is found by Mesa-Delgado et al. (2012) for other proplyds closer to the Trapezium.

Due to this small intrinsic extinction, we simplified our correction by taking a constant $c(\text{H}\beta)$ value of 0.45 for our calculations. To eliminate the nebular contribution, we selected

⁴ <http://research.iac.es/proyecto/PyNeb/>

Table 1. Emission line fluxes.

| λ_{air} (Å) | Ion | F_{E1} | F_{E2} | F_{E3} | F_{W3} | F_{W2} | F_{W1} |
|----------------------------|----------|-----------------|-----------------|-----------------|-----------------|-----------------|-----------------|
| 5158.8 | [Fe III] | | | | | 14.87 | 13.23 |
| 6300.3 | [O I] | 70.15 | 26.98 | 73.41 | 160.32 | 183.44 | 99.47 |
| 6363.8 | [O I] | 23.47 | 7.47 | 25.75 | 53.78 | 60.33 | 39.66 |
| 6716.4 | [S II] | 15.48 | | 15.95 | 52.92 | 71.16 | 49.25 |
| 6730.8 | [S II] | 28.59 | | 33.08 | 98.02 | 146.27 | 101.20 |
| 7155.2 | [Fe II] | 11.88 | 8.38 | 11.03 | 20.39 | 19.78 | 17.19 |
| 7172.0 | [Fe II] | 2.71 | 2.47 | 2.99 | 6.45 | 5.72 | 4.80 |
| 7255.8 | [Ni II] | | | | | 7.89 | 4.27 |
| 7320.0 | [O II] | 71.86 | 31.25 | 46.76 | | | |
| 7330.2 | [O II] | 54.27 | 23.45 | 36.61 | | | |
| 7377.8 | [Ni II] | 8.11 | 4.82 | 5.72 | 12.36 | 12.77 | 12.22 |
| 7388.2 | [Fe II] | 2.10 | | | 3.35 | 3.20 | 2.80 |
| 7411.6 | [Ni II] | 1.29 | | | | 1.68 | 2.04 |
| 7452.5 | [Fe II] | 2.83 | 2.23 | | 5.78 | 5.81 | 5.65 |
| 8578.7 | [Cl II] | 2.64 | | | 3.74 | 2.36 | 5.51 |
| 8617.0 | [Fe II] | 13.64 | 9.27 | 12.27 | 23.93 | 23.47 | 20.48 |
| 9052.0 | [Fe II] | | | | 6.44 | 5.54 | 4.46 |

Notes. Dereddened mission line fluxes for the knots in the Proplyd 244–440 jet, in units of 10^{-17} erg s $^{-1}$ cm $^{-2}$. Line fluxes were computed through the Gaussian fitting of spectral profiles extracted from the aperture sizes given in Sect. 3.1. The average uncertainty in the lines fluxes is $\sim 5 \times 10^{-18}$ erg s $^{-1}$ cm $^{-2}$, which we calculate from the RMS noise in adjacent portions of the spectrum. Empty entries denote positions where either no knot emission is observed or the emission is below the detection threshold, or the knot emission could not be reliably disentangled from the proplyd envelope.

Table 2. Knot positions.

| Knot | $\Delta\delta$ (") | $\Delta\alpha$ (") |
|------|--------------------|--------------------|
| E1 | −0.5018 | 2.7272 |
| E2 | −0.5338 | 2.2182 |
| E3 | 0.0145 | 1.4457 |
| W3 | −0.0793 | −0.6504 |
| W2 | −0.1006 | −0.8255 |
| W1 | −0.1177 | −0.9649 |

Notes. Offsets of the primary knots relative to the source in 244–440 measured in the MUSE data. The source position is taken to be 0". Knots labeled E_n correspond to eastern, redshifted knots, while W_n refers to western, blueshifted knots.

a sample of background regions away from the proplyd envelope and constructed a mean representative spectrum, which was subtracted from every pixel in the continuum-subtracted cubes.

4.2. Shock versus photoionization

We used the fluxes measured in Table 1 to estimate line ratios and compared them with those given in Table 2 of Giannini et al. (2015) to test for fluorescent excitation. The predicted collisional+fluorescent excitation ratio for the [Ni II] $\lambda 7411/7378$ line is given as 0.34, while the collisional case is given in the range 0.05–0.07; in our data we see ratios from 0.13 to 0.17. The [Fe II] $\lambda 7155/8617$ ratio is 0.8–0.9, which is higher than both collisional and collisional+fluorescence predictions⁵. These are shown in Fig. 7. These results indicate that while fluorescent pumping does appear to enhance the emission it is not the dominant process, which is expected as optical lines

⁵ The $\lambda 7453$ line is omitted here due to the low S/N.

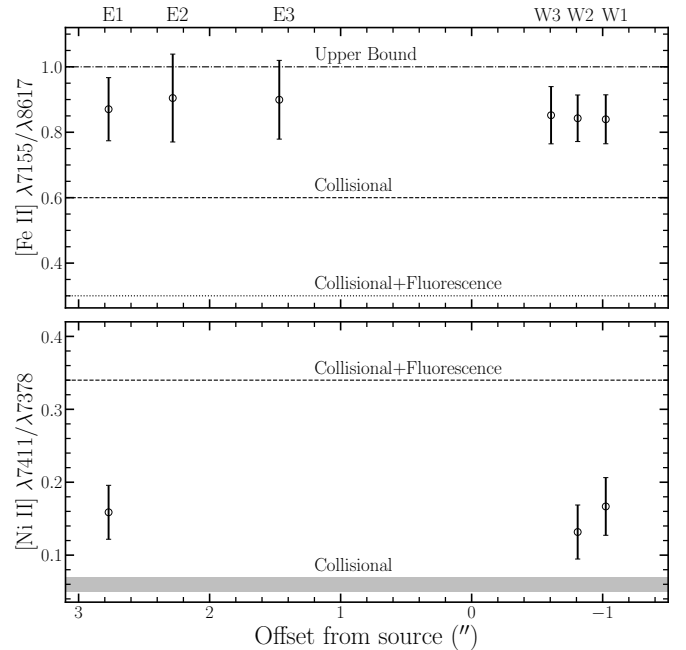


Fig. 7. Emission line ratios of the [Fe II] and [Ni II] lines sensitive to fluorescent pumping. Horizontal lines indicate the predicted ratios for each case, taken from Giannini et al. (2015).

like [Fe II] are more likely to arise from collisional excitation than photoexcitation (Bautista et al. 1996).

4.3. Mass-loss rate in the jet

In Sect. 4.2, we discussed the difficulty posed by the general densities of proplyd envelopes. Similarly, the lack of jet emission in

Table 3. Relative offsets and Pas.

| Obs. Date | E1 | | | E3 | | |
|--------------|--------------------|--------------------|--------|--------------------|--------------------|--------|
| | $\Delta\delta$ (") | $\Delta\alpha$ (") | PA (°) | $\Delta\delta$ (") | $\Delta\alpha$ (") | PA (°) |
| 1995 Nov. 14 | -0.4358 | 2.4981 | 99.9 | 0.0497 | 1.2106 | 87.7 |
| 1998 Sep. 17 | -0.4266 | 2.5646 | 99.4 | 0.0808 | 1.2502 | 86.3 |
| 2019 Oct. 23 | -0.5018 | 2.7272 | 100.4 | 0.0145 | 1.4457 | 89.4 |

Notes. Offsets and PAs for knots E1 and E3 calculated from the three epochs of observations. The offsets are measured relative to the source.

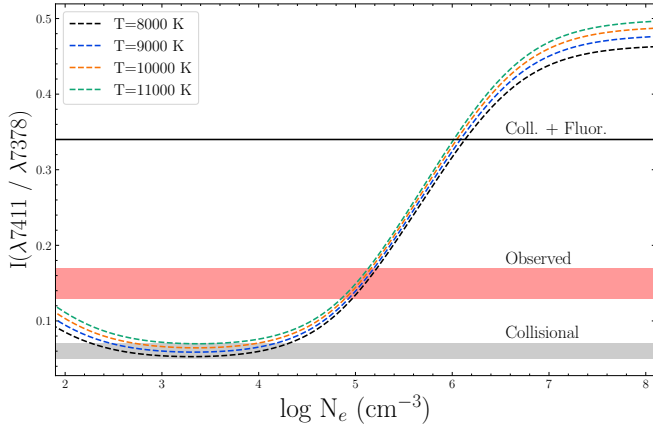


Fig. 8. Emissivity ratio of the optically forbidden Ni emission line, calculated in PyNeb. The dashed curves are the emissivity ratios calculated for each given temperature. The gray region denotes the predicted range of ratios for collisional excitation. The red region denotes the range of values we observe in our data. The solid black line denotes the predicted ratio for collisional+fluorescent excitation. The predicted values are taken from [Giannini et al. \(2015\)](#) assuming $T_e = 10000$ K and $n_e \sim 10^3$ – 10^5 cm^{-3} .

temperature-sensitive lines further complicates traditional diagnostic techniques, introducing uncertainties to our determination of the electron density. However, we note that the mass-loss rate is only weakly dependent on the electron density and so we set reasonable bounds on this physical parameter. We make estimates based on Fig. 8, where our observed [Ni II] ratios imply electron densities $7 \times 10^4 \text{ cm}^{-3} \leq n_e \leq 2 \times 10^5 \text{ cm}^{-3}$. Our [Fe II] ratios similarly imply electron densities $\sim 10^5 \text{ cm}^{-3}$. As the [Fe II] and [Ni II] ratios for the observed knots exhibit relatively small scatter in their respective emission lines (see Fig. 7), we assume a mean density of $n_e = 1.3 \times 10^5 \text{ cm}^{-3}$ at $T_e = 8200$ K.

Following [Hartigan et al. \(1995\)](#), we used the intrinsic knot luminosity of the [O I] $\lambda 6300$ Å and [S II] $\lambda 6731$ Å lines to estimate the jet mass and outflow rate. The mass outflow (in units of $M_\odot \text{ yr}^{-1}$) is given by the equation

$$\dot{M}_{\text{out}} = 2.27 \times 10^{-10} \left(1 + \frac{n_c}{n_e} \right) \left(\frac{L_{6300}}{10^{-4} L_\odot} \right) \times \left(\frac{v_{\text{tan}}}{150 \text{ km s}^{-1}} \right) \left(\frac{\ell_{\text{tan}}}{2 \times 10^{15} \text{ cm}} \right)^{-1} M_\odot \text{ yr}^{-1} \quad (1)$$

for the [O I] $\lambda 6300$ Å line, where n_c is the critical density, n_e the electron density, v_{tan} the proper motion (in km s^{-1}), and ℓ_{tan} is the size of the aperture (in cm) in the plane of the sky. The

Table 4. Jet luminosity, mass, and outflow rates.

| Knot | [O I] $\lambda 6300$ | | | [S II] $\lambda 6731$ | | |
|------|----------------------|------|------------------------|-----------------------|------|------------------------|
| | L | M | \dot{M}_{out} | L | M | \dot{M}_{out} |
| E1 | -5.2 | -9.0 | -10.5 | | | |
| E2 | -5.6 | -9.5 | -10.9 | | | |
| E3 | -5.2 | -9.0 | -10.5 | -5.7 | -9.7 | -9.9 |
| W3 | -4.8 | -8.6 | -10.1 | -5.0 | -9.0 | -9.3 |
| W2 | -4.7 | -8.6 | -10.0 | -4.9 | -8.9 | -9.2 |
| W1 | -5.0 | -8.9 | -10.3 | -5.0 | -9.0 | -9.3 |

Notes. Luminosity, mass, and outflow rates for the redshifted knots in the [O I] $\lambda 6300$ Å and [S II] $\lambda 6731$ emission lines. Luminosity is given in units of $\log_{10} L_\odot$, masses in units of $\log_{10} M_\odot$, and mass-loss rates in units of $\log_{10} M_\odot \text{ yr}^{-1}$.

expression is similar for the [S II] $\lambda 6731$ line,

$$\dot{M}_{\text{out}} = 3.38 \times 10^{-8} \left(\frac{L_{6731}}{10^{-4} L_\odot} \right) \left(\frac{v_{\text{tan}}}{150 \text{ km s}^{-1}} \right) \times \left(\frac{\ell_{\text{tan}}}{2 \times 10^{15} \text{ cm}} \right)^{-1} M_\odot \text{ yr}^{-1} \quad (2)$$

where it is assumed to be in the high-density limit so that the ratio $n_c/n_e \ll 1$.

For these calculations, we used a tangential velocity $v_{\text{tan}} = 17 \text{ km s}^{-1}$ and an aperture size $\ell_{\text{tan}} = 9.0 \times 10^{14} \text{ cm}$. We find low luminosities and mass-loss rates for all of the knots, with the blueshifted jet presenting higher values due to its exposure to the ionizing winds. For the [O I] $\lambda 6300$ Å lines the mass-loss rate is on the order of $10^{-11} M_\odot \text{ yr}^{-1}$, while in the [S II] line it is on the order of $10^{-10} M_\odot \text{ yr}^{-1}$ (see Table 4).

We note however that these values do not account for photoionization effects, and so represent a lower limit of the jet mass outflow rate. If instead we assume photoionization plays a large role in the jets, then we can calculate an upper limit of the mass-loss rate in the jet from

$$\dot{M}_j = 3.4 \times 10^{-9} \left(\frac{v_j}{100 \text{ km s}^{-1}} \right) \left(\frac{n_e}{10^3 \text{ cm}^{-3}} \right) \times \left(\frac{r_j}{115 \text{ au}} \right)^3 M_\odot \text{ yr}^{-1} \quad (3)$$

as given in [Bally & Reipurth \(2001\)](#). With this equation, we estimate that \dot{M}_j would have an upper limit of $10^{-9} M_\odot \text{ yr}^{-1}$.

5. Discussion

5.1. Implications of the proper motions

5.1.1. Constraints on disk inclination

Throughout our study we rely largely upon proper motion measurements to constrain the jet velocity. This parameter is important for both considerations of the wiggling jet model, and for calculations of the jet mass-loss rate. In Sect. 3.2, we found proper motions $<20 \text{ km s}^{-1}$, and estimated a jet inclination angle i_{inc} of $72.2^\circ \pm 4.2^\circ$. While the low proper motion is not unusual for objects in the ONC, we note that i_{inc} is inconsistent with the observations of BOM2000, which the authors interpret as a nearly edge-on disk. We examine a few possibilities for this below.

Our assumption in the text is that the jet moves through the medium in a ballistic manner, that is, with a constant velocity. If the jet encounters a dense material, it may be deflected and result in a change in its bulk flow velocity. A similar phenomenon was recorded by Hartigan et al. (2019) in the objects HH 8 and HH 10, where stationary “loop” structures occurred in the knots as they interacted with sheets of ambient material, resulting in no measurable proper motions. If there are dense, unseen obstacles within the proplyd envelope along the flow path of the jet, or if the jet is piercing through the envelope, it may be possible that the jet is significantly slowed or deflected as it encounters the material, or that the unshocked or weakly shocked material in the jet produces shocks in its vicinity that falsely present as knots. The latter case would raise the possibility that the locations of the knots observed in the HST data are not knots at all, but density enhancements in the surroundings. In such a scenario our proper motions would not be reliable as a way to estimate the inclination angle of the jet, and we would require measurements closer to the driving source that are more likely to be unaffected by the above interactions. However, we note in Fig. 6 that while there is obvious structure in the density distribution of the envelope, it does not appear sufficient to deflect the jet in this way. It is important to note nonetheless that the blueshifted jet’s proximity to the IF may affect a change in the jet structure as it passes through the front. If this is the case, the ballistic assumption may not be appropriate for the blueshifted jet.

In the HST images, particularly the $H\alpha$ filter, BOM2000 observed a silhouetted structure which they interpreted as an edge-on disk (see their Fig. 7b) with a semi-major axis nearly aligned vertically in the image. In our MUSE observations we observe a bright “halo” structure around the source in $H\alpha$ and $[\text{O I}]\lambda 6300 \text{ \AA}$ but we are unable to determine its cause. If we look solely at the properties of the jet, we conclude that it does not support an edge-on disk scenario. Moreover, if the jet is close to the plane of the sky, the radial velocities would imply a driving source larger than the one supported by its spectral type (see Appendix A). Additionally, the large gap between the source and the nearest knot E3 in the redshifted flow versus the smaller gap observed in the blueshifted side suggests a system where the size and orientation of the disk effectively obscures the receding jet. Finally, the jet direction is not centered with the disk axis.

We argue that all these discrepancies are reconcilable if one assumes that the disk observed in the HST images is not associated with the jet-driving source. Such a scenario would explain the position angle of the jet, its low proper motion, and our derived jet inclination angle. In our discussion on the jet curvature below, we see that this conclusion is also a possible outcome of our modeling and consistent with previous observations.

5.1.2. Dynamical age of the jet

In Sect. 3.2, we used the best-fit proper motion of the jet and the offset of knot E1 from the source to present a minimum age of the jet of at least 300 yr. This is a most interesting result, as it tells us not only that the jet is quite young and still active, but also that photoionization and photoevaporation of the proplyd do not seem to affect the ability of the star to launch a jet. The jet may have been launched within a “bubble” that shielded it from the majority of hard-UV radiation, which may explain why collisional excitation appears to dominate in the jet.

Additionally, we note above (Sect. 5.1.1) that the proximity of the blueshifted jet to the IF may change the jet structure. Along with the age estimate, this raises questions about the length of the blueshifted emission, which is substantially shorter than that of its redshifted counterpart. The measured radial velocities of the knots are not too dissimilar between the red and blue lobes, suggesting similar launch velocities. If we further assume similar launch epochs, then we would expect the blue lobe to extend to at least the same length, yet we observe no emission beyond the envelope of the proplyd. Furthermore, YSOs typically begin driving outflows early in their life-cycles (as early as 10^4 yr; see Andre et al. 2000), so it is expected that the true extent of the jet may be far greater than what is observed (Frank et al. 2014). This is not unreasonable, and we raise two points here to address this.

Firstly, visible knots are formed by shocks as the jet interacts with itself or the ambient medium (in isolated regions), or by illumination from an external source (in irradiated regions). The minimum age of the star suggests that the jet is far older than 300 yr, so the jet must have punctured through the envelope and passed into the larger region of the nebula, which in the neighborhood of our object of interest typically has a density on the order of 10^3 cm^{-3} (Méndez-Delgado et al. 2021). Other HH objects are seen in the ONC beyond the protective shells of the proplyds, which indicates that the ONC is either dense enough or irradiated enough to render these objects visible. It may be that the jet has lost so much of its density after passing beyond the envelope that it is simply not visible, which is reasonable as the luminosities of HH objects tend to decrease with separation from the driving source. Secondly, the environment surrounding a proplyd is not hospitable to transient objects. Given the low luminosity and radial velocities of the jets we do not anticipate a very strong driving force, so it is likely that the strong stellar winds and radiation in the ONC have entirely dissipated the portions of the jet beyond the envelope.

5.2. Origin of the curvature

To explain the C-shaped symmetry common to irradiated jets in the Orion nebula (Bally & Reipurth 2001, and references therein), a few models have been put forth involving ram pressure from stellar winds (Raga et al. 2009; Estalella et al. 2012). Additionally, sinusoidal jet morphologies may arise due to the presence of a binary companion which causes either orbital motion of the jet source (Masciadri & Raga 2002; Lai 2003; Murphy et al. 2021; Erkal et al. 2021), or a precession of the jet ejection axis due to the inner disk not being coplanar with a companion’s orbit (Zhu 2019; Terquem et al. 1999). BOM2000 initially proposed the idea of a hidden companion based on the offset of the photometric center from the geometric center of the disk as seen in their $[\text{O I}]$ observations. Recent evidence put forth by Tobin et al. (2009) and Kounkel et al. (2019) also indicates that 244–440 is a spectroscopic binary. The possibility of 244–440 possessing a companion that may produce a “wiggling”

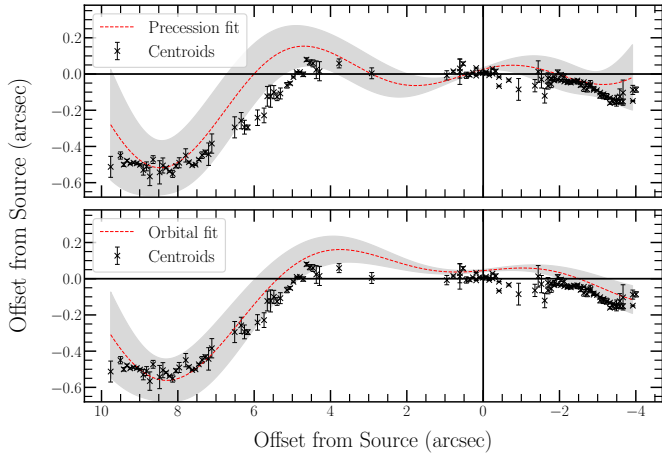


Fig. 9. Best fits for the precession (top) and orbital (bottom) models for the [Fe II] λ 7155 Å jet. The relative offset along the jet axis is deprojected by $x' = x/\cos\theta$ for an angle of 73° assuming a distance $d = 400$ pc. The gray region indicates a 3σ uncertainty in the model.

in the jet axis, as well as the ram pressure from the stellar winds from the stars in the Trapezium cluster and θ^2 Ori A and B, may all act in conjunction to produce the complex morphology that we observe in this object.

In this section we explore whether the observed curvature in the jet can be explained by a wiggling jet model in the absence of an appreciable side-wind. The basic parameters of these models are the length scale of the wiggle λ and the half-opening angle of the jet cone β , an important parameter in the precession model. They can be inferred by visual inspection of the data and the proper motion estimates presented in Sect. 3.2. We measured the knot centroid positions by Gaussian fitting of the jet along the outflow axis, and utilized the jet inclination angle estimated above to de-project these positions from the plane of the sky. In the following analysis, we follow the method explored by Murphy et al. (2021).

From our data, we estimate a de-projected length-scale $\lambda \sim 8''$. The half-opening angle β is also observable from the data by fitting the slope of the peaks of the wiggle curve. Even if we do not observe as many peaks as some other wiggling jets, we can safely estimate $\beta = 3.4^\circ$. We can further relate the precession model to the orbital model by means of β . In an orbital model, we define the ratio of the orbital velocity to the jet velocity as $\kappa = v_o/v_j$, and this is related to β by $\kappa \leq \tan\beta$.

Using these parameters and the equations shown in Murphy et al. (2021) we explored both an orbital motion model and a precession model for the jet. We used the Python package `lmfit`⁶ and rewrote the equations as functions of λ and β , allowing them to vary by about 15%. We used a fixed value of $v_j = 65$ km s⁻¹ for the jet velocity and set an upper limit on r_o of 0.1 (see Sect. 1). The results of the fits are shown in Fig. 9. The errors on the centroids were calculated according to Eq. (A.1) in Porter et al. (2004). Both models were weighted with the centroid errors.

It is important to recognize that given the short length-scale of the blueshifted jet and the inability to estimate a proper motion for that emission lobe, it is difficult to determine whether the wiggle is point-symmetric (precession) or mirror-symmetric (orbital motion) around the origin, though Fig. 9 does favor mirror-symmetry. Nevertheless we can make assumptions based on the values derived from these fitted models.

A primary driver of the values derived from the fitted curves is the total system mass. The spectral type of the visible central star implies a low-mass object (see Appendix A) and we therefore limit our considerations to $M_{\text{sys}} \leq 0.8 M_\odot$. For the orbital motion model, the results imply $\mu (= M_c/M_{\text{sys}})$ values ranging from 0.7 with $M_{\text{sys}} = 0.8 M_\odot$ to 0.9 with $M_{\text{sys}} = 0.4 M_\odot$. We can estimate the maximum binary separation a as the ratio of the orbital radius r_o of the source about the barycenter and the mass ratio μ , $a = r_o/\mu$, obtaining separation in the range ~ 30 – 40 au. The implied orbital period τ_o is found by

$$\frac{M_{\text{sys}}}{M_\odot} = \mu^{-3} \left(\frac{r_o}{\text{AU}} \right)^3 \left(\frac{\tau_o}{\text{yr}} \right)^{-2} \quad (4)$$

which suggest an orbital period of ~ 220 yr.

A similar calculation for the precession model results in a precession period $\tau_p = 238$ yr with μ ranging from 0.3 ($M_{\text{sys}} = 0.8 M_\odot$) to 0.5 ($M_{\text{sys}} = 0.4 M_\odot$). These results imply orbital periods of ~ 30 – 50 yr and binary separations from ~ 5 – 10 au. This smaller value is not unreasonable as the precession model requires a warped inner disk, and if this is induced by a companion then the companion must be relatively close.

In the precession model, the inferred mass-ratio indicates an equal-mass binary at close separation. The length scale of the deprojected jet (~ 4000 au) and large fluctuation in the red lobe are consistent with precession models, as fluctuations due to orbital motion are more likely to appear within 100s of au of the source (Masciadri & Raga 2001). However, this model presents some difficulties. If the companion is close in mass to the primary, one should wonder whether or not this companion would truly be hidden in observations. Unfortunately, we cannot resolve the binary separations in our MUSE observations, nor is our spectral resolution high enough to perform accurate spectroastrometry. If we consider larger system masses, for example $M_{\text{sys}} \approx 1 M_\odot$, the derived μ values still imply an appreciably large companion. Another issue is the observed properties of the jet. The μ values obtained with the precession model suggest a jet driven by the primary, and this cannot be reconciled with the assumption that the disk seen in the HST images is associated with the primary in the system. Therefore it seems unlikely that a precession model is an appropriate explanation for the observed wiggle.

In the orbital model, we find a mass-ratio that implies the jet-driving source is not the primary in the system. As discussed in Sect. 5.1.1 this outcome is very reasonable and is supported by observational evidence. If this is an equal-mass binary, we would anticipate a different spectral type than what the observed stellar spectrum suggests. If one assumes that the primary conforms to an M0 or M1 spectral type ($M_p \approx 0.5 M_\odot$), we argue that this model gives good agreement for $M_{\text{sys}} \sim 0.6$ – $0.7 M_\odot$. Additionally, the orbital model curve seen in Fig. 9 best matches the morphology of the jet. All of these arguments provide compelling evidence that if the curvature can be explained by a wiggling jet model, the orbital motion model is a strong candidate, and that the jet is associated with the smaller, hidden star in the system.

We have not explored the impact of stellar winds here. Generally, side-wind deflection models imply a hyperbolic curvature as the jet is deflected away from the wind source (Raga et al. 2009), although more complicated morphologies in photoionized regions are possible (Masciadri & Raga 2001). In our observations, the C-shaped morphology anticipated by a deflection model appears to be applicable primarily to the envelope but not the jet, indicating that the jet is either shielded to some degree

⁶ <https://lmfit.github.io/lmfit-py/>

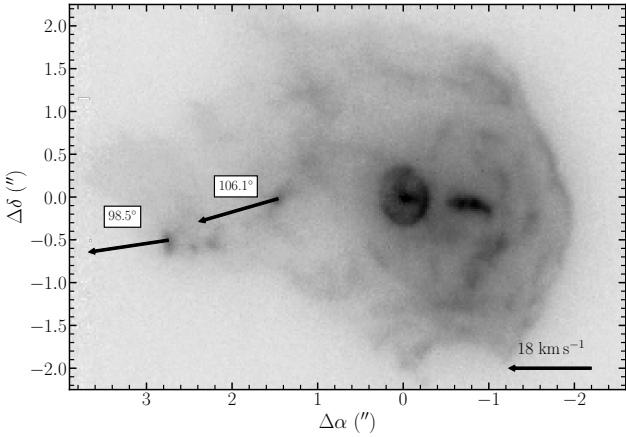


Fig. 10. Proper motion vectors superimposed on the [O I] λ 6300 Å emission line. A small difference is observed, pointing overall radially outward though possibly pointing along the direction of the jet curvature. The angles are measured east of north in the plane of the sky.

from the winds or that multiple winds are influencing the system in a way that is beyond the scope of this paper. Furthermore, using the derived proper motions and overlaying their vectors on the data (see Fig. 10), it is seen that the knots do point radially outward from the source with a slight difference ($\sim 7^\circ$) in their directions. The decrease in angle exhibited by knot E1 could potentially indicate an interaction between the jet and a side-wind; however with proper motions available for only two knots either conclusion is approached with caution. Nevertheless these models lay a positive groundwork, as future observations may help provide greater constraints on the parameters of a potential companion.

5.3. Diagnostics and mass-loss

Even if we could not reliably determine the temperature of the jet in our data through traditional diagnostic diagrams, the presence of refractory species like [Fe II] and [Ni II] provides opportunity to explore ranges of density, as well as the potential role of fluorescent pumping of the jet. It is reasonable to assume that the presence of external ionizing sources may induce fluorescence in the jet, particularly given the presence of the [Ni II] lines and the observed line ratios in Fig. 7. However, the density ranges estimated from the [Ni II] lines ($\sim 10^4$ – 10^5 cm $^{-3}$) are above the critical limit for fluorescent pumping, which suggests that shock processes play the larger role in producing the emission lines. This may be due to the envelope shielding the jet to some degree from incident radiation, making it not as exposed as others to the external environment.

This result has interesting implications when considering the mass-loss rate. In Sect. 4.3, we presented limits on \dot{M}_j in the range 10^{-11} – 10^{-10} M_\odot yr $^{-1}$ and argued that even if photoionization plays a large role, we would not expect a mass-loss greater than 10^{-9} M_\odot yr $^{-1}$. Additionally there is an asymmetry in the luminosities and mass-loss rates with the blueshifted jet presenting generally higher values. While the jet may benefit from shielding by the envelope, the fact that the computed values are higher in the blue lobe than the red demonstrates that the jet may still be partially exposed to external radiation. These lower values are typically seen in very low-mass protostars and brown dwarfs (Whelan et al. 2009; Riaz et al. 2017), which is consistent with the spectral typing of the source (Fig. A.1).

6. Conclusions

We have performed the first analysis of the possible origins of the curvature and physical conditions of the proplyd 244–440 jet using high spatial resolution IFU observations with MUSE NFM+AO. We identified in the MUSE data multiple, previously unreported knots in the redshifted jet lobe. These were observed in various emission lines, most notably [O I] and refractory species like [Fe II] and [Ni II]. Two knots (E1, E3) are also visible in archival HST images.

Using measurements of the E1 and E3 knots in the MUSE and HST data, we estimated a low proper motion of 9.5 ± 1.1 mas yr $^{-1}$ and inferred a jet inclination angle $i_{\text{jet}} = 72.2^\circ \pm 4.2^\circ$, which appears contrary to previous interpretations of a nearly edge-on disk. Closer analysis suggested that the jet is not associated with the observed disk, and we posit that the jet is actually driven by a smaller companion.

We utilized a jet-wiggling model to explore for the first time the curvature in the jet, and found that in the absence of other forces (i.e., multiple strong side-winds) the curvature could be explained by orbital motion of the jet source. As recent evidence suggests this is a spectroscopic binary, this is not unreasonable. We further reason that if this is due to a companion, we might expect the driving source to be $\leq 0.15 M_\odot$ in orbit around an M0 or M1 type star ($M \sim 0.5 M_\odot$) at a separation of ~ 30 au.

Using the [O I] and [S II] lines, we estimated a lower limit on the mass-loss rate in the jet on the order of 10^{-10} – 10^{-11} M_\odot yr $^{-1}$. If we assume the jet is nearly completely photoionized we set an upper limit on the mass-loss rate of $< 10^{-9}$ M_\odot yr $^{-1}$. We note that similarly small values are observed in low-mass and substellar objects such as brown dwarfs.

Finally, we looked at the “proplyd lifetime problem” and estimated an evaporation time between 0.1 and 0.2 Myr. The minimum dynamical age of the jet was found to be around 300 yr, indicating that the source is still quite active and that the jet may still be quite young. Compared to the evaporation time of this proplyd, this also tells us that photoionization and photoevaporation of the proplyd had likely been occurring for some time before the jet was launch. This might indicate that the envelope has acted as a protective shell enclosing the jet and shielding it from a significant portion of Ly α radiation. This yields critical information about the durability of the accretion-outflow connection in the harshest of conditions. We also raise the possibility that the calculated dynamical age may drastically underestimate the true age, reasoning that if the jet has extended beyond the envelope it may have been completely destroyed.

This work demonstrates the power of the VLT/MUSE NFM instrument in exploring jet launching dynamics. The data yielded by this instrument is rich in information, and is capable of exploring spatial structure across many emission lines critical in the study of stellar jets. The high angular resolution provided by the instrument is particularly ideal for the exploration of jets in high-radiation environments, as the external irradiation exposes quiescent, unshocked material, and allows us to better identify emission features and remove nebular and envelope contributions to the jet emission.

Acknowledgements. We are grateful to the referee Alex Raga for his feedback which has helped us improve the quality of this work. A.K. would like to acknowledge funding through the John and Pat Hume Doctoral Scholarship at Maynooth University, Ireland. C.F.M. is funded by the European Union under the European Union’s Horizon Europe Research & Innovation Programme 101039452 (WANDA). S.F. is funded by the European Union under the European Union’s Horizon Europe Research & Innovation Programme 101076613 (UNVEIL). Views and opinions expressed are however those of the author(s) only and do not necessarily reflect those of the European Union or the European

Research Council. Neither the European Union nor the granting authority can be held responsible for them. We also extend our thanks to Monika Petr-Gotzens and Teresa Giannini for their helpful comments and discussion.

References

- Agra-Amboage, V., Dougados, C., Cabrit, S., Garcia, P. J. V., & Ferruit, P. 2009, *A&A*, 493, 1029
- Andre, P., Ward-Thompson, D., & Barsony, M. 2000, in *Protostars and Planets IV*, eds. V. Mannings, A. P. Boss, & S. S. Russell, 59
- Bacciotti, F., & Eislöffel, J. 1999, *A&A*, 342, 717
- Bally, J., & Reipurth, B. 2001, *ApJ*, 546, 299
- Bally, J., Testi, L., Sargent, A., & Carlstrom, J. 1998, *AJ*, 116, 854
- Bally, J., O'Dell, C. R., & McCaughrean, M. J. 2000, *AJ*, 119, 2919
- Bautista, M. A., Peng, J., & Pradhan, A. K. 1996, *ApJ*, 460, 372
- Beccari, G., Petr-Gotzens, M. G., Boffin, H. M. J., et al. 2017, *A&A*, 604, A22
- Cardelli, J. A., Clayton, G. C., & Mathis, J. S. 1989, *ApJ*, 345, 245
- Clarke, C. J. 2007, *MNRAS*, 376, 1350
- Eisner, J. A., Arce, H. G., Ballering, N. P., et al. 2018, *ApJ*, 860, 77
- Erkal, J., Dougados, C., Coffey, D., et al. 2021, *A&A*, 650, A46
- Estalella, R., López, R., Anglada, G., et al. 2012, *AJ*, 144, 61
- Frank, A., Ray, T. P., Cabrit, S., et al. 2014, in *Protostars and Planets VI*, eds. H. Beuther, R. S. Klessen, C. P. Dullemond, & T. Henning, 451
- Gaia Collaboration (Brown, A. G. A., et al.) 2021, *A&A*, 649, A1
- Giannini, T., Antonucci, S., Nisini, B., Bacciotti, F., & Podio, L. 2015, *ApJ*, 814, 52
- Hartigan, P., Edwards, S., & Ghandour, L. 1995, *ApJ*, 452, 736
- Hartigan, P., Holcomb, R., & Frank, A. 2019, *ApJ*, 876, 147
- Henney, W. J., & Arthur, S. J. 1998, *AJ*, 116, 322
- Henney, W. J., & O'Dell, C. R. 1999, *AJ*, 118, 2350
- Kirwan, A., Murphy, A., Schneider, P. C., et al. 2022, *A&A*, 663, A30
- Kounkel, M., Covey, K., Moe, M., et al. 2019, *AJ*, 157, 196
- Lai, D. 2003, *ApJ*, 591, L119
- Lucy, L. B. 1995, *A&A*, 294, 555
- Manara, C. F., Testi, L., Rigliaco, E., et al. 2013, *A&A*, 551, A107
- Manara, C. F., Frasca, A., Alcalá, J. M., et al. 2017, *A&A*, 605, A86
- Marti, J., Rodriguez, L. F., & Reipurth, B. 1993, *ApJ*, 416, 208
- Masciadri, E., & Raga, A. C. 2001, *AJ*, 121, 408
- Masciadri, E., & Raga, A. C. 2002, *ApJ*, 568, 733
- McLeod, A. F., Dale, J. E., Ginsburg, A., et al. 2015, *MNRAS*, 450, 1057
- McLeod, A. F., Gritschneider, M., Dale, J. E., et al. 2016, *MNRAS*, 462, 3537
- McLeod, A. F., Reiter, M., Kuiper, R., Klaassen, P. D., & Evans, C. J. 2018, *Nature*, 554, 334
- Méndez-Delgado, J. E., Henney, W. J., Esteban, C., et al. 2021, *ApJ*, 918, 27
- Mesa-Delgado, A., Núñez-Díaz, M., Esteban, C., et al. 2012, *MNRAS*, 426, 614
- Murphy, A., Dougados, C., Whelan, E. T., et al. 2021, *A&A*, 652, A119
- Nisini, B., Antonucci, S., Alcalá, J. M., et al. 2018, *A&A*, 609, A87
- O'Dell, C. R., Hartigan, P., Lane, W. M., et al. 1997, *AJ*, 114, 730
- O'Dell, C. R., Kollatschny, W., & Ferland, G. J. 2017, *ApJ*, 837, 151
- O'Donnell, J. E. 1994, *ApJ*, 422, 158
- Podio, L., Bacciotti, F., Nisini, B., et al. 2006, *A&A*, 456, 189
- Porter, J. M., Oudmaijer, R. D., & Baines, D. 2004, *A&A*, 428, 327
- Raga, A. C., Cantó, J., Rodríguez-González, A., & Esquivel, A. 2009, *A&A*, 493, 115
- Ray, T. P., & Ferreira, J. 2021, *New A Rev.*, 93, 101615
- Reipurth, B., & Bally, J. 2001, *ARA&A*, 39, 403
- Reiter, M., Smith, N., & Bally, J. 2016, *MNRAS*, 463, 4344
- Riaz, B., & Whelan, E. T. 2015, *ApJ*, 815, L31
- Riaz, B., Briceño, C., Whelan, E. T., & Heathcote, S. 2017, *ApJ*, 844, 47
- Ricci, L., Robberto, M., & Soderblom, D. R. 2008, *AJ*, 136, 2136
- Sheehan, P. D., Eisner, J. A., Mann, R. K., & Williams, J. P. 2016, *ApJ*, 831, 155
- Terquem, C., Eislöffel, J., Papaloizou, J. C. B., & Nelson, R. P. 1999, *ApJ*, 512, L131
- Tobin, J. J., Hartmann, L., Furesz, G., Mateo, M., & Megeath, S. T. 2009, *ApJ*, 697, 1103
- Weilbacher, P. M., Monreal-Ibero, A., Kollatschny, W., et al. 2015, *A&A*, 582, A114
- Weilbacher, P. M., Palsa, R., Streicher, O., et al. 2020, *A&A*, 641, A28
- Whelan, E. T. 2014, *Astron. Nachr.*, 335, 537
- Whelan, E. T., Ray, T. P., Podio, L., Bacciotti, F., & Randich, S. 2009, *ApJ*, 706, 1054
- Whelan, E. T., Alcalá, J. M., Bacciotti, F., et al. 2014, *A&A*, 570, A59
- Winter, A. J., Clarke, C. J., Rosotti, G. P., Hacar, A., & Alexander, R. 2019, *MNRAS*, 490, 5478
- Zhu, Z. 2019, *MNRAS*, 483, 4221

Appendix A: Supplemental Information

Many of the results discussed in this paper require us to have at least a broad estimate of the source mass. If we are to utilize a jet wiggling model, for example, a key assumption is that the source contains a binary as a critical parameters is the ratio of the companion mass to the primary. Similarly, any jet proper motion study or computation of mass-outflow rates must be compared against some mass if we are to determine how reasonable our values are. To accomplish this, we extracted an on-source spectrum, corrected for extinction, and compared it with several spectra of known stellar types to find which is most similar as shown in Fig. A.1.

Our spectral templates were all observed on the X-Shooter instrument and their spectral types reported in Manara et al. (2013) and Manara et al. (2017). Based on this, we argue that 244–440 is most likely an M0 or M1 spectral type star, placing it on the very low-mass end. We believe this to be reasonable as well, as the proper motions and radial velocities are both quite low, indicative of a low-power outflow. Additionally, the estimated mass-outflow rate is comparable with those seen in brown dwarfs, strengthening this argument (Whelan et al. 2014; Riaz & Whelan 2015; Riaz et al. 2017).

Figures A.2–A.4 show flux-integrated three-color composites for various emission lines extracted from both background-subtracted and unsubtracted cubes. Figures A.5 and A.6 show velocity channel maps isolate the redshifted and blueshifted emission features. Figures A.7 and A.8 show these features in color composites using flux-integrated spectro-images.

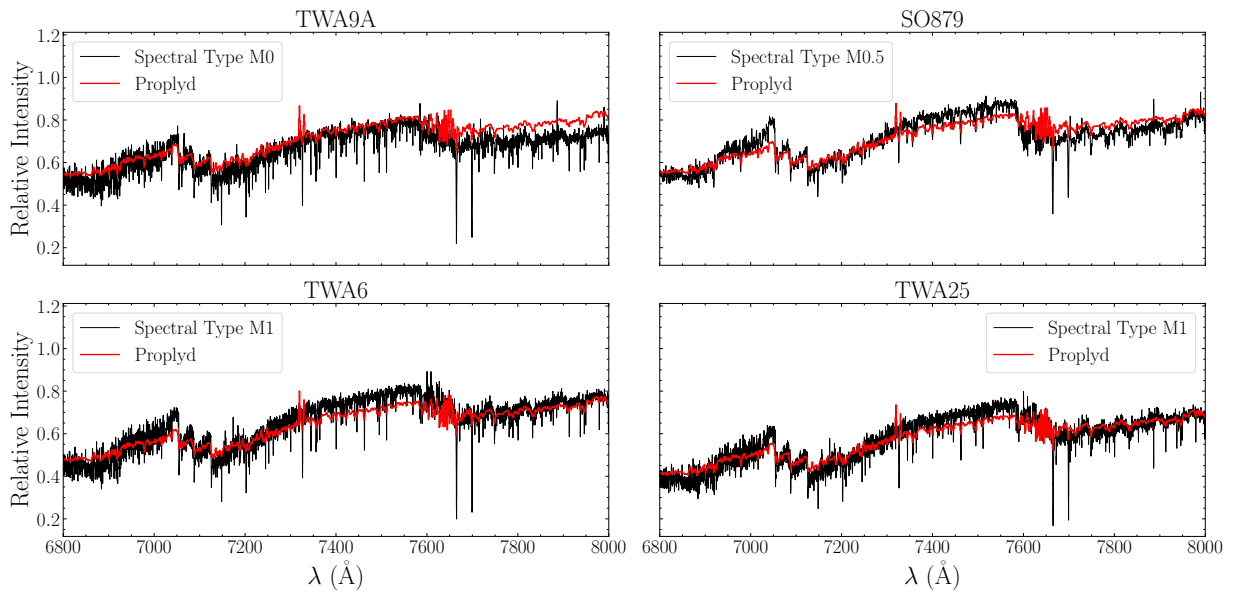


Fig. A.1. On-source spectrum of 244-440 (red) overplotted with spectra from a sample of M-type YSOs. The spectral type of each YSO is given in the legend of each panel.

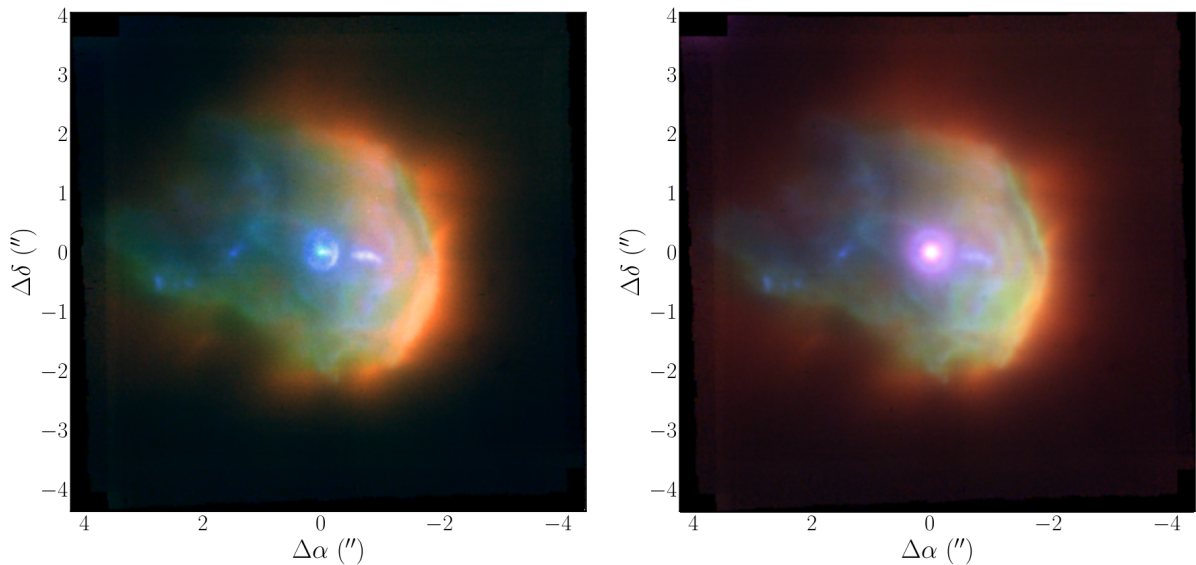


Fig. A.2. Three-color flux-integrated image composites of the proplyd 244-440 for the background-subtracted (left) and unsubtracted (right) data. Red is [Ar III] λ 7136, green is H α , and blue is [O I] λ 6300.

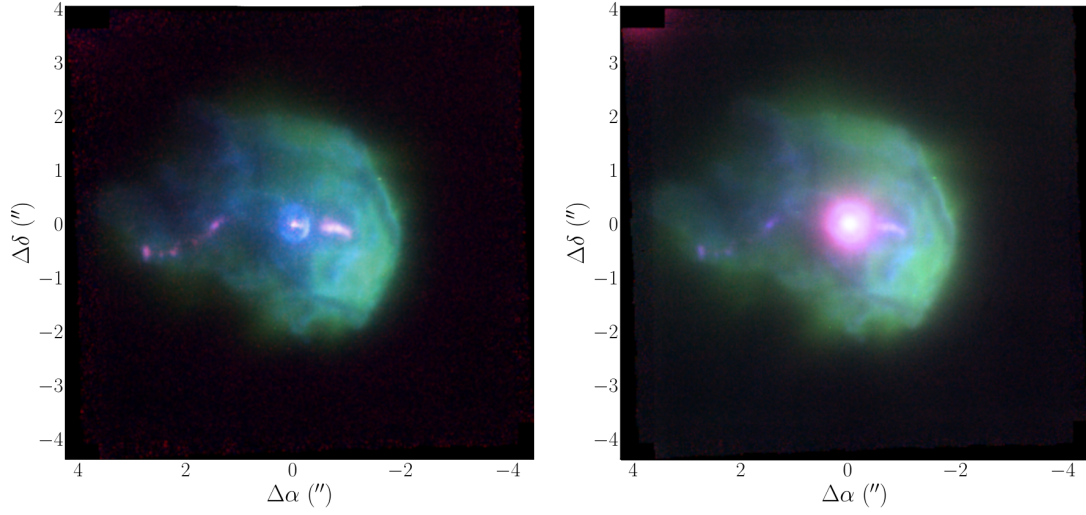


Fig. A.3. Same as Figure A.2. Red is [Fe II] λ 7155, green is [N II] λ 6548, and blue is [O I] λ 6300.

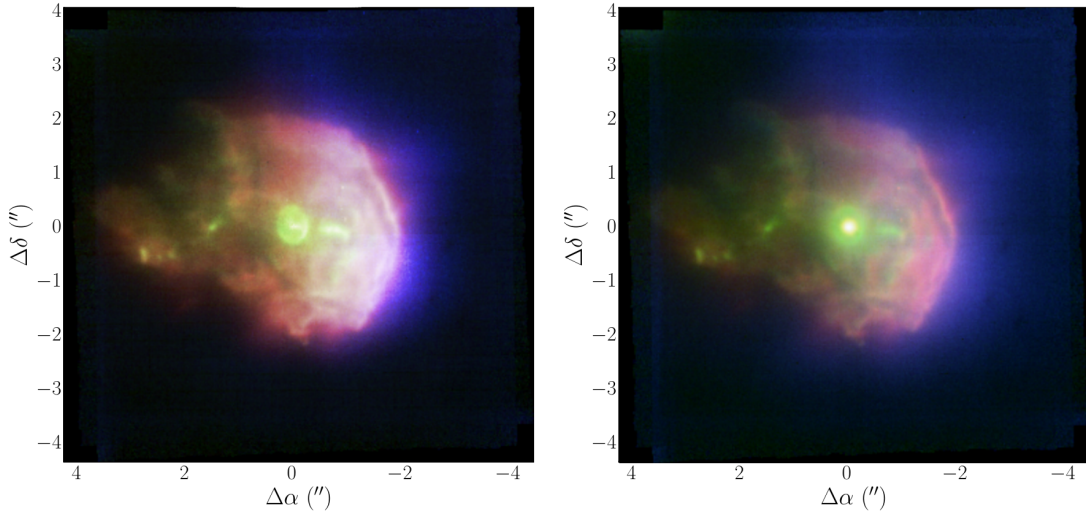


Fig. A.4. Same as Figure A.2. Red is [O II] λ 7320, green is [O I] λ 6300, and blue is [O III] λ 5007.

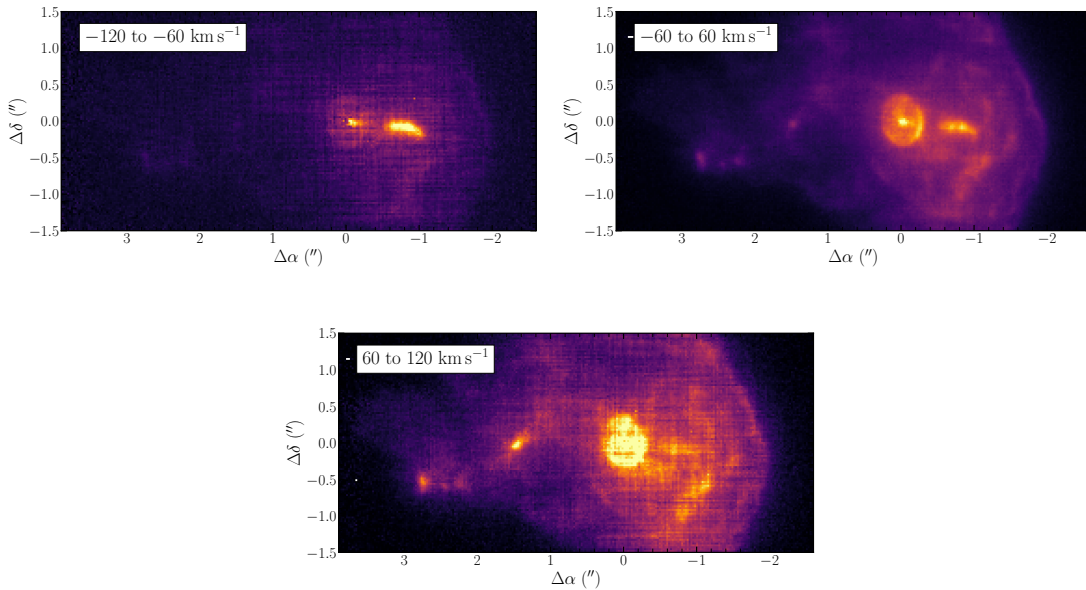


Fig. A.5. Velocity channel maps of the [O I] λ 6300 line in the MUSE data.

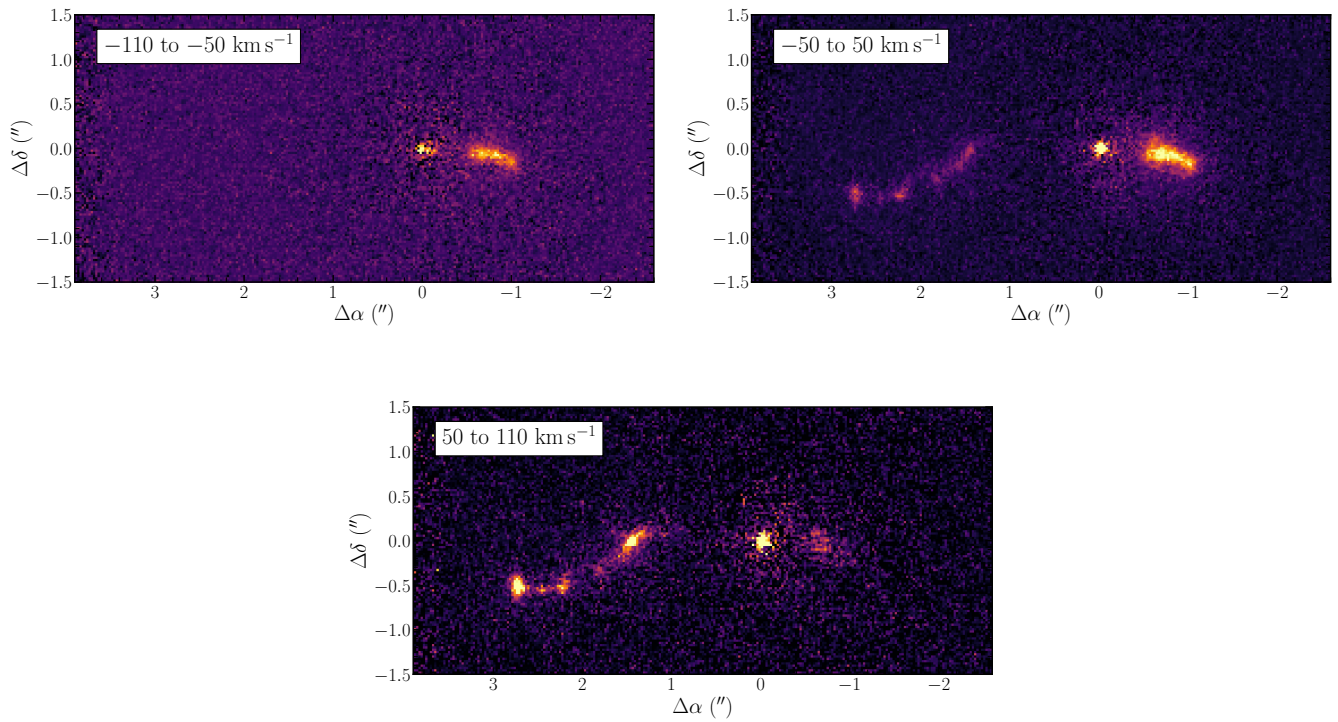


Fig. A.6. Same as Figure A.5, but for the $[\text{Fe II}]\lambda 7155$ line.

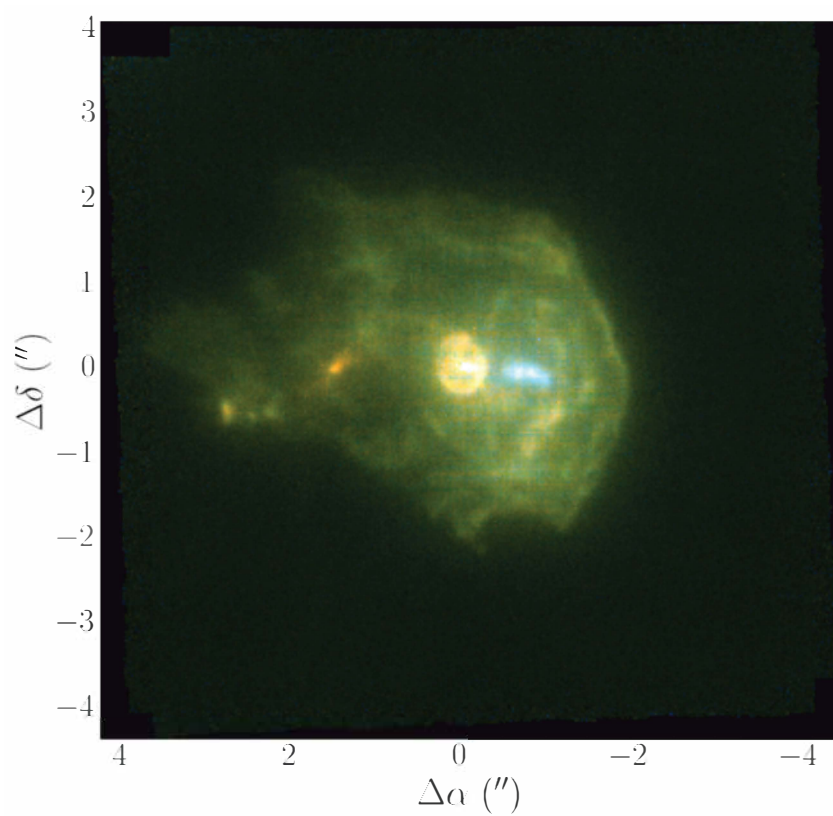


Fig. A.7. Three-color composite of the $[\text{O I}]\lambda 6300$ emission line. Green is the full flux-integrated image, and red and blue are the red- and blueshifted emissions shown in Figure A.5.

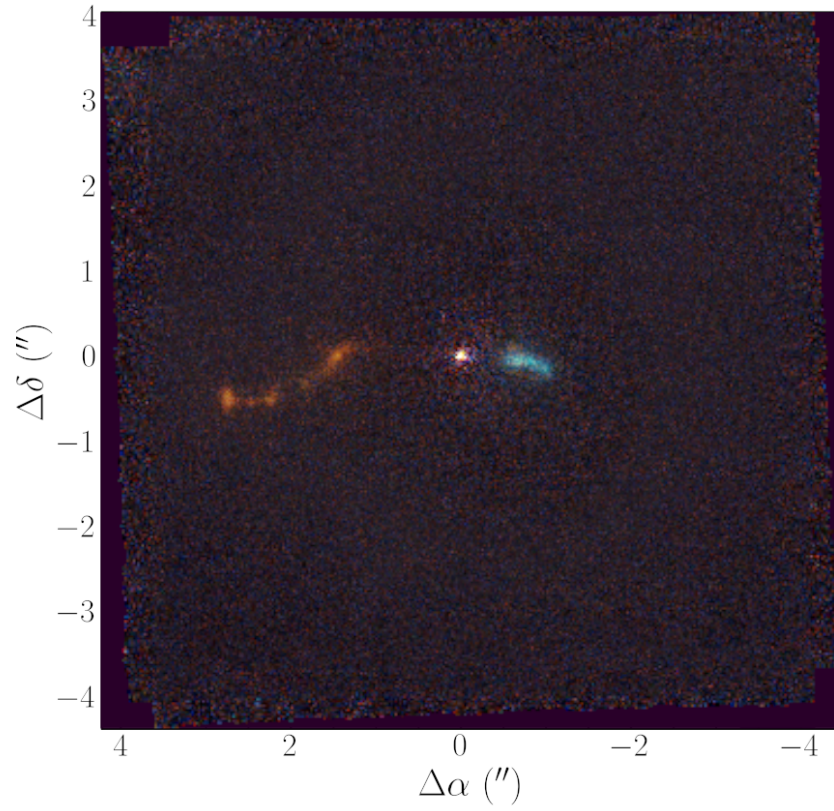


Fig. A.8. Three-color composite of the $[\text{Fe II}]\lambda 7155$ emission line. Green is the full flux-integrated image, and red and blue are the red- and blueshifted emissions shown in Figure A.6.