

# Dyes and Pigments

## Imaging and spectroscopic data combined to disclose the painting techniques and materials in the fifteenth century Leonardo atelier in Milan.

--Manuscript Draft--

<b>Manuscript Number:</b>	
<b>Article Type:</b>	Research paper
<b>Keywords:</b>	Pigments in Renaissance paintings; Imaging Techniques; Portable X-ray fluorescence; Fiber Optics Reflectance Spectroscopy; Raman, FT-MIR and FT-NIR reflection spectroscopy; Hyperspectral imaging
<b>Corresponding Author:</b>	Letizia Bonizzoni Università degli Studi di Milano, Dipartimento di Fisica Milano, Italy
<b>First Author:</b>	Anna Galli
<b>Order of Authors:</b>	Anna Galli Marco Gargano Letizia Bonizzoni Silvia Bruni Matteo Interlenghi Margherita Longoni Arianna Passaretti Michele Caccia Christian Salvatore Isabella Castiglioni Marco Martini
<b>Abstract:</b>	The project "Leonardesque Artists beyond the Visible" was planned in the 500 <sup>th</sup> anniversary of the death of Leonardo da Vinci, with the occasion of an exhibition held in Milan in 2019, where more than twenty works made by Leonardesque masters have been put on display. Among them, five representative paintings made by his closest pupils were selected for a comprehensive and multidisciplinary project. Portable non-invasive imaging and spectroscopy techniques were applied to supply useful information to scholars but also to the wider public: description of the material composition of the pigments, of the preparation and of the binders, existence or absence of underdrawing, and identification of the painters' technique and style. Particular attention was paid also to the image processing techniques, mostly for hyperspectral and radiographic data, to get the most from both innovative and traditional techniques.
<b>Suggested Reviewers:</b>	Claudia Caliri claudia.caliri@lns.infn.it Expert in XRF and application on CH, especially paintings and detection of pigment  Andreas Karydas karydas@inp.demokritos.gr Expert in the development of analytical methodologies, instrumentation and interdisciplinary applications of X-ray fluorescence with emphasis on CH areas  Peter Vandanabeele Peter.Vandenabeele@UGent.be Expert in Raman, FT Raman and micro-Raman spectroscopy for the identification of pigments

Milan, October 20, 2020

Dear Editor,

I wish to submit the paper “**Imaging and spectroscopic data combined to disclose the painting techniques and materials in the fifteenth century Leonardo atelier in Milan.**” by Galli, Gargano, Bonizzoni, Bruni, Interlenghi, Longoni, Passaretti, Caccia, Salvatore, Castiglioni, Martini, to be considered for publication in Dyes and Pigments.

The work we are submitting presents the analyses on a set of paintings by Leonardo da Vinci pupils. These masterpieces were studied with the occasion of an exhibition in Milan: multispectral analyses and chemical characterization of pictorial layers were performed in strict collaboration with art historians.

Portable non-invasive imaging and spectroscopy techniques were applied to supply useful information to scholars but also to the wider public: description of the material composition of the pigments, of the preparation and of the binders, existence or absence of underdrawings, and identification of the painters’ technique and style. Particular attention was paid also to the image processing techniques, mostly for hyperspectral and radiographic data, to get the most from both innovative and traditional techniques.

Trusting the paper will be found suitable for publication in Dyes and Pigments, also on behalf of my co-authors, I thank you for your attention and look forward to your reply.

Yours faithfully  
Letizia Bonizzoni

**Imaging and spectroscopic data combined to disclose the painting techniques and materials in the fifteenth century Leonardo atelier in Milan.**

ANNA GALLI<sup>1,2§</sup>, MARCO GARGANO<sup>3§</sup>, LETIZIA BONIZZONI<sup>3\*</sup>, SILVIA BRUNI<sup>4</sup>, MATTEO INTERLENGHI<sup>1</sup>, MARGHERITA LONGONI<sup>4</sup>, ARIANNA PASSARETTI<sup>4</sup>, MICHELE CACCIA<sup>2</sup>, CHRISTIAN SALVATORE<sup>6,7</sup>, ISABELLA CASTIGLIONI<sup>5,1</sup>, MARCO MARTINI<sup>2</sup>

<sup>1</sup> CNR-IBFM, via F.lli Cervi 93, Segrate (MI)

<sup>2</sup> Dipartimento di Scienza dei Materiali, Università degli Studi di Milano-Bicocca, via R. Cozzi 55, Milano

<sup>3</sup> Dipartimento di Fisica Aldo Pontremoli, Università degli Studi di Milano, via Celoria 16, Milano

<sup>4</sup> Dipartimento di Chimica, via Golgi 19, Milano

<sup>5</sup> Dipartimento di Fisica Giuseppe Occhialini, Università degli Studi di Milano Bicocca, piazza della Scienza 3, Milano

<sup>6</sup> DeepTrace Technologies S.R.L., via Conservatorio 17, 20122, Milano

<sup>7</sup> Scuola Universitaria Superiore-IUSS Pavia, Piazza della Vittoria 15, Pavia

§ these authors contributed equally to the work

\*Corresponding author: Letizia Bonizzoni, Dipartimento di Fisica, via Celoria 16, 20133, Milano  
letizia.bonizzoni@mi.infn.it

**Abstract**

The project “Leonardesque Artists beyond the Visible” was planned in the 500<sup>th</sup> anniversary of the death of Leonardo da Vinci, with the occasion of an exhibition held in Milan in 2019, where more than twenty works made by Leonardesque masters have been put on display. Among them, five representative paintings made by his closest pupils were selected for a comprehensive and multidisciplinary project. Portable non-invasive imaging and spectroscopy techniques were applied to supply useful information to scholars but also to the wider public: description of the material composition of the pigments, of the preparation and of the binders, existence or absence of underdrawing, and identification of the painters’ technique and style. Particular attention was paid also to the image processing techniques, mostly for hyperspectral and radiographic data, to get the most from both innovative and traditional techniques.

Results highlighted for each author a peculiar painting technique showing hidden features such as *pentimenti* and the panel preparation methods, pigments, binders and varnishes.

## Keywords

Pigments in Renaissance paintings; Imaging Techniques; Portable X-ray fluorescence; Fiber Optics Reflectance Spectroscopy; Raman, FT-MIR and FT-NIR reflection spectroscopy; Hyperspectral imaging;

## 1 INTRODUCTION

2019 marked 500 years since the death of Leonardo da Vinci and in Milan, where he worked for 17 years, major exhibitions were dedicated to his life. One of them was held at the Poldi Pezzoli Museum (7 Nov, 2019 - 10 Feb, 2020): “Leonardo e la Madonna Litta” (Leonardo and the Litta Madonna), an exhibition focused on the temporary comeback of one of the most famous masterpieces from the State Hermitage Museum to the city where it was painted. Together with this masterwork, a selected group of twenty paintings and drawings borrowed from both public and private collections all around the world was on display. They were all painted by Leonardo and his closest pupils in the last two decades of the 15th century when the *maestro* lived in Milan at the court of Ludovico il Moro. In fact, during these Milanese years, Leonardo da Vinci was the Master of a large workshop: in the final decade of the fifteenth century, the great amount of commissions determined the need of a fair number of assistants. The atelier became a well-established model for important artistic production, involving painters such as Marco d’Oggiono, Giovanni Antonio Boltraffio and Francesco Napoletano, three of the oldest pupils present in Leonardo workshop since about 1490, creators of significant works that helped disseminating Leonardo’s innovative style.

Leonardo and the la Madonna Litta appealing event took place as a part of the national celebrations promoted and supported by the Italian Ministry of Culture, thanks to the patronage of the Regional Government of Lombardy, the Municipality of Milan, and the Bracco Foundation, which also funded the diagnostic project “Leonardesque Artists beyond the Visible”, launched in this context. The project was planned in close relation with the exhibition itself, promoting relations between science and art, and was centered on a selection of paintings by some of the earliest pupils of Leonardo. In collaboration with art historians, conservators and restorers, it was possible to define a specific protocol of measurements and data analysis in order to achieve as large as possible information.

A series of diagnostic analyses has been carried out under the coordination of the CNR Istituto di bioimmagini e Fisiologia Molecolare in cooperation with Università di Milano, Università di Milano-Bicocca, and the innovative spin off of Scuola Universitaria Superiore (IUSS) from Pavia –DeepTrace Technologies S.R.L.. The Physics technologies applied to the study of paintings are widely regarded

1 to give useful information to experts in the field, but also to the wider audience. Besides supplying  
2 the mere description of the pictorial material composition and the possible existence of preparatory  
3 drawing, if guided by specific questions, Physics technologies can help the identification of the  
4 painters' technique and style.  
5  
6

7 Although the consolidated use of limited materials, typical when dealing with Renaissance products  
8 of workshops, the rendering technique could vary greatly, from the wooden support to the  
9 preparation, *imprimitura* and pigment layers with different types of binding media and varnishes.  
10 Moreover, underdrawings and possible drawing transfer methods by means of cartoons can explain  
11 and reveal multiple information to cast light on the reconstruction of the story of a painting,  
12 especially in relation with the rest of the workshop production. Conveniently integrated with  
13 historical and documentary analysis, imaging and spectroscopic analyses have today the  
14 acknowledged – though not exclusive – role of favouring the understanding of processes and  
15 materials used for the execution of a pictorial work, by an interdisciplinary, non-destructive, non-  
16 invasive approach, and help the experts in responding to key questions, not only about the  
17 conservation and restoration of the work, but also about its interpretation. In spite of the growing  
18 interest around Leonardo, systematic studies through physical and chemical analyses are still not so  
19 many (Sarrazin et al., 2009; L. Keith and A. Roy, 1996; L. Keith et al., 2011; M. Spring et al., 2011;  
20 Bonizzoni et al., 2017; de Viguerie et al., 2009; de Viguerie et al., 2010; Elias and Cotte, 2008; Billinge  
21 et al., 2011; Galli et al., 2020; Gutman Rieppi et al., 2020; Caliri et al., 2020; Barberis et al., 2019).  
22  
23  
24  
25  
26  
27  
28  
29  
30  
31  
32  
33  
34  
35

36 To this purpose, the project planned non-invasive scientific investigations, in accordance with a  
37 suitable protocol applied to all the paintings. The measurements and data analysis were chosen to  
38 be synergic and complementary and innovative data handling was applied, as detailed in the  
39 following sections. The experimental protocol was wider with respect to the previous ones applied  
40 in similar works, already quoted above, and allowed to completely characterize the works studied  
41 from a technical point of view. The art-historian experts were thus offered objective information,  
42 useful for establishing the best conservation practice and to support their evaluation and critical  
43 interpretation, as evident in the artwork records in the exhibition catalogue (Di Lorenzo and Marani,  
44 2019). Nonetheless, the same analyses have been a perfect training for new technical and  
45 methodological developments in the Heritage Science, and a springboard for challenging  
46 developments. The research had also the benefit of being part of the exhibition itself, allowing  
47 visitors to discover the hidden features of the analysed paintings through video contents expressly  
48 produced.  
49  
50  
51  
52  
53  
54  
55  
56  
57  
58  
59  
60  
61  
62  
63  
64  
65

1  
2  
3  
4  
5  
6  
7  
8  
9  
10  
11  
12  
13  
14  
15  
16  
17  
18  
19  
20  
21  
22  
23  
24  
25  
26  
27  
28  
29  
30  
31  
32  
33  
34  
35  
36  
37  
38  
39  
40  
41  
42  
43  
44  
45  
46  
47  
48  
49  
50  
51  
52  
53  
54  
55  
56  
57  
58  
59  
60  
61  
62  
63  
64  
65

## 2 EXPERIMENTAL

### 2.1 The paintings

The analyses presented in this paper were performed on five easel paintings during the conservative works prior to the exhibition “Leonardo e la Madonna Litta”. The masterpieces selected for this project, all by Leonardo pupils, are part of Poldi Pezzoli Museum collection or were borrowed to the Museum on the occasion: *The Virgin and Child* (The Madonna of the Rose) by Giovanni Antonio Boltraffio (see Fig. 1Sa in supplementary materials), *The Virgin feeding the Child* by an unknown painter of the Lombard school (see Fig. 1Sb), and *The Christ Child* by Marco d’Oggiono are all held by the Poldi Pezzoli Museum in Milan (see Fig. 1Sc). *The Virgin and Child* (see Fig. 1Sd) by Francesco Galli, known as Francesco Napoletano, is held by the Brera Art Gallery in Milan, and *The Virgin and Child* (see Fig. 1Se) by unknown painter of the Lombard school is property of a large private collection.

### 2.2 Methods

All the paintings were studied *in situ*, either at the owner institution or, in case of restoration still in progress, in the restorer working space. The goal of the research was to give art historians and restorers as much information as possible, to highlight the painting technique, in term of underdrawing, panel preparation and reconstruction of the pictorial techniques. With this aim, besides the pigments used, we also tried to propose a stratigraphy sequences of pictorial layers. We performed different analytical techniques, by means of imaging investigations (Daffara and Fontana, 2011; Delaney et al., 2005; Legrand et al., 2014); and pointwise spectroscopic analyses for both material and stylistic characterization. We were thus able to hypothesize and deduce the kind of materials (pigments and binders) and how the painters used them in the studied masterworks. Moreover, although it was not possible to perform microscopic cross-section analyses, strictly

1 avoided in the current project, the possible stratigraphy was deduced as the applied techniques,  
2 exploiting different wavelength, have different penetration depth (Bonizzoni et al., 2008, 2007;  
3 Colombo et al., 2011; Gargano et al., 2020). In particular, ED-XRF (Energy Dispersive X-Ray  
4 Fluorescence), FORS (Fiber Optics Reflectance Spectroscopy), Raman and Fourier Transform  
5 Infrared (FTIR) analyses are all spot techniques that have already proved to be more effective when  
6 applied in synergy (Bonizzoni et al., 2015). Moreover, more in detail, UV induced fluorescence is  
7 linked to the outer surface of the pictorial layers while the IR radiation can reach deeper layers up  
8 to the preparation or *imprimitura*. Furthermore, the use of a multispectral IR reflectography  
9 approach allowed us to differentiate the pigment transparency and highlight specific features  
10 related to the drawing technique (Gargano et al., 2007).

11 On the other hand, X-rays penetrate deeply into the matter, usually crossing the complete pictorial  
12 stratigraphy. Moreover, outgoing characteristic X-ray fluorescence of medium-heavy elements can  
13 still pass the whole thickness, while relatively light elements' X-rays (such as Ca and K) have a higher  
14 probability to be absorbed, giving an incomplete information about the lowest layers, often in  
15 gypsum. Besides, FORS is a powerful technique for surface pigment characterization, but it  
16 undergoes difficulty in spectra interpretation arising from possibly altered surface (presence of dust,  
17 yellowing or old varnishes) or complex mixtures and dark shades (Bonizzoni et al., 2008; Gargano et  
18 al., 2012). Micro-Raman spectroscopy is a technique of choice for painting analysis (Centeno, 2016)  
19 because it allows a rapid, unambiguous and in situ non-invasive approach for the examined objects.  
20 Since Raman spectroscopy probes molecular and crystal lattice vibrations, it is sensitive to the  
21 composition, bonding, chemical environment, phase and crystalline structure of the examined  
22 material and therefore it is able to unambiguously identify the majority of the pigments;  
23 furthermore its spatial resolution allows to discriminate among different chemical components in  
24 pigment mixtures and the measurements are free from interferences, except for the fluorescence

1 due to binding media and/or varnishes (Vandenabeele et al., 2000). Although the vibrational  
2 information obtainable by Raman spectroscopy is similar to that obtained by infrared spectroscopy  
3 (IR), they are not identical but rather complementary due to the different selection rules governing  
4 vibrational Raman scattering and IR absorption (Vandenabeele et al., 2001). When applied in the  
5 laboratory, Fourier-transform infrared (FTIR) spectroscopy offers a fast analysis of micro-samples  
6 and is able to provide information on the nature of the organic and inorganic materials used by an  
7 artist. Its application in a non-invasive manner requires measurements to be performed in the  
8 reflection mode and, even if several examples of such application are reported in the literature, it  
9 still deserves further exploitation. Of particular interest is the different penetration depth that can  
10 be achieved in the medium-IR (MIR) and in the near-IR (NIR) regions. Indeed, NIR can penetrate  
11 more than MIR due to its higher energy, thus allowing to reach a greater depth than in MIR, where  
12 only a few micrometers are possible. Thus, in principle, by acquiring IR spectra from MIR to the  
13 longer-wavelength portion of NIR it is possible to probe a layered structure from the surface to  
14 underlying layers. In addition, thanks to the smaller absorption coefficients, good quality reflection  
15 spectra on undiluted materials can also be obtained. Finally, it is well known from the literature that  
16 NIR spectra are particular suitable for identifying organic binders in paintings (Vagnini et al., 2009).  
17 The association of the four chosen analytical techniques makes it possible to overcome the limit of  
18 each one and to detect all class of pigments (organic, inorganic, dyes...) and to recognize pigments  
19 having the same characterizing elements, but different chemical formula. The different penetration  
20 depths of the primary sources allow to infer, in the simplest cases, the stratigraphy without any  
21 sampling (Bonizzoni et al., 2008; Bruni et al., 2008; Miliani et al., 2010)  
22  
23 Regarding imaging analyses, UV induced fluorescence investigates the very superficial pictorial layer  
24 while IR radiation can reach deeper layers up to the preparation or *imprimitura*. Furthermore, the  
25 use of a multispectral IR reflectography approach allows to differentiate the pigment transparency  
26  
27  
28  
29  
30  
31  
32  
33  
34  
35  
36  
37  
38  
39  
40  
41  
42  
43  
44  
45  
46  
47  
48  
49  
50  
51  
52  
53  
54  
55  
56  
57  
58  
59  
60  
61  
62  
63  
64  
65



1 and highlights specific features related to the drawing technique (Gargano et al., 2007). X-ray  
2 radiography, given the nature of x-rays to penetrate deeply into the matter, provides information  
3  
4 about the spatial distribution of heavy materials in every layer of the painting and the support.  
5  
6 However, the information is presented in a single 2D image, making it difficult to separate the  
7  
8 information related to each layer. In order to detect the contribution of each layer, statistical  
9  
10 calculations based on iterative subtractive method were applied through comparisons between the  
11  
12 images of the pictorial layer (obtained in the visible spectrum) and the corresponding radiographic  
13  
14 images. These statistical algorithms allowed to separate the radiopaque image of the pictorial layer  
15  
16 from those belonging to lower layers (materials of preparation plus support).  
17  
18  
19  
20  
21

22  
23 Data analysis method applied to the hyperspectral  $H(x,y,\lambda)$  results allowed to take into account the  
24  
25 similarity of each hyper spectrum with the other ones by means of supervised classification  
26  
27 procedures, such as Spectral Angle Mapper (SAM) (Comelli et al., 2011; Pelagotti et al., 2008; van  
28  
29 der Weerd et al., 2003). The «end-member» have been chosen by referring to spectroscopic data;  
30  
31 the result is a stack of images,  $I(x,y,\alpha)$ , where the value of each pixel represents the angle,  $\alpha$ ,  
32  
33 between the spectrum identified by  $(x, y)$  and the end member.  
34  
35  
36  
37  
38

## 39 **2.3 Experimental setups**

### 40 2.3.1 High Resolution Multispectral Imaging

41  
42 The photographic system consisted of digital back Phase One IQ3, with 'Trichromatic' (100 MP)  
43  
44 detector, able to detect radiation from 350 to 1000 nm. For all the acquisitions a Schneider  
45  
46 Kreuznach 120 mm LS f/4.0 Macro lens was used in combination with different filters and light  
47  
48 sources to select the appropriate wavelength range for the investigation.  
49  
50  
51  
52

### 53 2.3.2 Visible-reflected (Vis) image

1 For the acquisition of this images, a UV-IR cut filter was used mounted on the lens of the device  
2 described above. For the lighting were used 2 halogen lamps, maximum power 150 W with a  
3  
4  
5 condenser lens to optimize direct lighting of paintings and to reduce surface heating.  
6

### 7 2.3.3 Ultraviolet-induced (UVF) fluorescence

8  
9  
10 Together with the UV-IR cut filter, a 418 nm long-pass filter was applied to the same device. For the  
11  
12 lighting two 3 W 365 nm LED light were used in a completely darkened room.  
13  
14

### 15 2.3.4 Near Infrared (NIR) reflectography (850-1000 nm)

16  
17  
18 Two 150 W incandescent lights with an 850 nm long pass filter mounted on the lens of the device  
19  
20 were used.  
21  
22

23 2.3.5 Infrared False Color (IRFC) imaging: Vis and NIR image were combined using the green and red  
24  
25 channel of the Vis image, shifted respectively to the blue and green channel of the IRFC image, and  
26  
27 the NIR image was used shown in the red channel.  
28  
29

### 30 2.3.6 ShortWave Infrared (SWIR) reflectography (1000-1700 nm)

31  
32  
33 This technique has been performed with a new portable scanning system prototype based on a  
34  
35 spherical scanning system (Gargano et al., 2017): successfully used in previous important scientific  
36  
37 campaing (Gargano et al., 2019) an InGaAs camera (Xenics Xeva- 1.7-640, 640×512 elements,  
38  
39 spectral sensitivity: 1000–1700 nm) was mounted on a motorized head that allowed precise and  
40  
41 small movements (0.01° resolution for the rotations and 0.1 mm for the linear stage). For all the  
42  
43 multispectral acquired images the resolution was of 20 pixel/mm.  
44  
45  
46  
47  
48

### 49 2.3.7 Images in visible light with optical microscope

50  
51  
52 A digital optical microscope AM4013MZ with polarizing filter (5 MP, 220x, magnification) was used  
53  
54 to obtain magnified images in the visible range.  
55  
56

### 57 2.3.8 Hyperspectral imaging in the range 400-1000 nm

1  
2  
3  
4  
5  
6  
7  
8  
9  
10  
11  
12  
13  
14  
15  
16  
17  
18  
19  
20  
21  
22  
23  
24  
25  
26  
27  
28  
29  
30  
31  
32  
33  
34  
35  
36  
37  
38  
39  
40  
41  
42  
43  
44  
45  
46  
47  
48  
49  
50  
51  
52  
53  
54  
55  
56  
57  
58  
59  
60  
61  
62  
63  
64  
65

Hyperspectral imaging was performed using a Specim IQ spectral camera. It employs the push broom method (Hartley and Gupta, 1994) measurements of a scene made by scanning line-by-line across a spectral range of 400- 1000 nm, thereby capturing the spectral information for each line of the scene across that spectral range. Across that spectral range, there are 204 binnable bands, partially overlapping, at 7 nm resolution. It is able to produce a square image of 512 x 512 pixels, each 17.58  $\mu\text{m}$  x 17.58  $\mu\text{m}$  in size.

For the lighting, a system of 2 halogen lamps, with maximum power 150 W, condenser lens to optimise direct lighting of paintings and to reduce surface heating, was used.

### 2.3.9 X-ray radiography

X-ray radiographies were obtained by a portable radiographic device (Xrayconsult), 20-80 kV was used to perform X-ray radiographies. To get the most from this technique, images acquired were elaborated to improve the signal to noise ratio, techniques to augment contrast through the application of filters, segmentation of region of interests, and extraction of characteristics useful for comparisons were applied.

### 2.3.10 X-ray fluorescence spectroscopy (XRF)

Assing LITHOS 3000 portable spectrometer was used, with quasi monochromatic excitation at 17.4 keV, obtained with a transmission Zr filter (100  $\mu\text{m}$  thick) mounted on a Mo target X-ray tube, giving a 4mm radius of analysis on the samples. The system was equipped with a Peltier-cooled Si-PIN detector, area of circular measurement (d=5 mm). X-tube typical working conditions were 25 kV and 300  $\mu\text{A}$  and the measuring time was about 30-60 s. The efficiency of the handheld spectrometer is low for elements with  $Z < 17$ . For each studied painting, please refer to the Supplementary Materials Section for the location of analysed points. (Fig 1Sa-e).

### 2.3.11 Fibre optic reflectance spectrophotometry (FORS)

1 A portable Vis-NIR spectrophotometer (HR4000, Ocean Optics Dunedin, FL, USA) was used for FORS  
2 analysis, with a linear array, 360-1100 nm, 2.7 nm spectral resolution with a 45°x:45° geometry of  
3 measurement and a detection area of about 2 mm<sup>2</sup>. The spectrophotometer was connected to a  
4 tungsten halogen light source (D65, HL2000, Ocean Optics): light is transmitted through a quartz  
5 fiber optics bundle 1.5-meter-long (Ocean Optics), composed by six fibers (400 μm each), to collect  
6 reflected light around the single central illuminating fiber (400 μm). The spectrometer was  
7 connected to a laptop and calibrated using white and black reflectance standards (Spectralon® 99%  
8 and dark trap). Visible-NIR reflectance spectrum from 380 nm to 1000 nm was recorded for each  
9 sample. For each studied painting, please refer to the Supplementary Materials Section for the  
10 location of analysed points. (Fig. 1Sa-e).  
11  
12  
13  
14  
15  
16  
17  
18  
19  
20  
21  
22  
23  
24

### 25 2.3.12 Raman spectroscopy

26 Micro-Raman analyses have been performed by a compact portable Raman spectrometer I-Raman  
27 Plus BW Tec, with fibre optic configuration. The probe has a flexible fibre coupling encased in a  
28 protective jacketing material that performs Rayleigh scatter rejection as high as 10 photons per  
29 billion.  
30  
31  
32  
33  
34  
35  
36  
37

38 It was fixed to a xyz stage for micrometric positioning and the latter placed on a tripod. A diode laser  
39 emitting at 785 nm was used; the power at the sample was about 5 mW, the spectral range of our  
40 measurements was 200-3000 cm<sup>-1</sup>, while the spectra resolution was about 3–5 cm<sup>-1</sup>.  
41  
42  
43  
44  
45

46 The TE Cooled Linear Array detector (2048 pixel; pixel size 14μmx200μm) was cooled by means of a  
47 Peltier device.  
48  
49

50 All spectra were obtained as a sum of 20 accumulations with an exposure time of 4 s for each  
51 accumulation. Raman spectra were analysed as obtained and the identification of compounds was  
52 performed comparing the spectra recorded on the painting with the ones belonging to our personal  
53 database of Raman spectra or to libraries available in the literature (Bell et al., 1997; Burgio and  
54  
55  
56  
57  
58  
59  
60  
61  
62  
63  
64  
65

1  
2  
3  
4  
5  
6  
7  
8  
9  
10  
11  
12  
13  
14  
15  
16  
17  
18  
19  
20  
21  
22  
23  
24  
25  
26  
27  
28  
29  
30  
31  
32  
33  
34  
35  
36  
37  
38  
39  
40  
41  
42  
43  
44  
45  
46  
47  
48  
49  
50  
51  
52  
53  
54  
55  
56  
57  
58  
59  
60  
61  
62  
63  
64  
65

Clark, 2001). The database was created recording the Raman spectra on pure pigments and on reference paint samples prepared ad hoc. For each studied painting, please refer to the Supplementary Materials Section for the location of analysed points. (Fig. 1Sa-e).

2.3.13 Fourier-transform infrared spectroscopy (FTIR) A portable FTIR spectrometer Alpha Bruker equipped with an accessory for reflection measurements was used to acquire spectra from 7000 to 400  $\text{cm}^{-1}$ . Each spectrum was recorded as sum of 200 scans, with 4- $\text{cm}^{-1}$  resolution. The diameter of the measurement spot was 6 mm.

First-derivatives of the NIR spectra were calculated by using Grams AI (Thermo Fisher) software. The Savitsky-Golay algorithm was used, with polynomial degree 2 and number of points from 16 to 33, according to the noise level of the spectra.

2.3.14 Fluorescence spectroscopy Just on some red details of one of the paintings, namely the Virgin and Child by Francesco Galli, fluorescence spectra were acquired with visible excitation at 435 nm. The proper excitation wavelength was obtained from the emission of a halogen source (maximum power 150 W) by an interference filter. The radiation was focused on the measurement area by a 20x microscope objective and the emitted radiation was collected through the same objective. A dichroic filter, with 458 – 680 nm transmission range, was used to eliminate the reflected incident radiation. The spectrum was acquired by a Lot Oriel MS125 spectrometer equipped with a Peltier-cooled Andor CCD detector. Both the source and the spectrometer were connected to the microprobe by fibre optics.

For each studied painting, please refer to the Supplementary Materials Section for the location of analysed points. (Fig. 1Sa-e).

### 3. RESULTS AND DISCUSSION

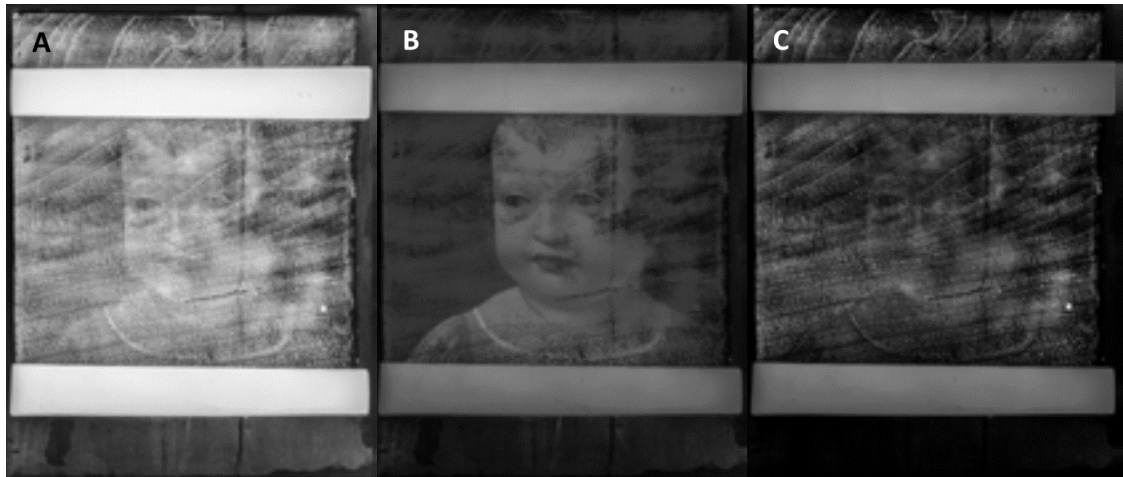
The various issues discussed in the following represent a detailed catalogue of the techniques and materials used for the paintings, including a comprehensive discussion of the panel, preparatory

1 layers, pigments and binding media, obtained not only from the non-invasive analyses but also from  
2 the application of image-processing algorithms. The summary below is intended to draw out some  
3 particular points and comparisons, as well as more general observations on the group of paintings  
4 considered here; although we studied panels of the same workshop, we found typical and different  
5 methods of realizing the artworks, from the panel to the upper paint layers.  
6  
7  
8  
9  
10  
11

### 12 **3.1 Wood Panel**

13 All the paintings in this study are on panels and, in one case, it was possible to identify the wood  
14 species starting from radiography. It is important to highlight that, in many cases, the radiographic  
15 images are not clear due to thickness of the preparation or *imprimitura* and the wood thickness with  
16 respect to the pigment layer where the X-ray absorption is far less. To overcome this issue, all  
17 radiographic images were elaborated to extract important features from distinct layers that would  
18 not otherwise be visible through traditional methods. For *The Christ Child* panel, by Marco  
19 d'Oggiono, the radiographic image (fig. 1 A) was elaborated with iterative calculations of statistical  
20 probability using the comparison between the visible image and the radiographic image, in order to  
21 separate the radiopaque image belonging to the Christ Child (fig. 1B) from the one belonging to the  
22 wooden support (fig. 1C). As a first step of the procedure, mathematical processes - such as gaussian  
23 filtering, aimed to reduce image noises, and co-registration - were applied for a correct overlap of  
24 the radiographic image and the visible image, a necessary step for making local comparisons  
25 between the information provided by the two images. Secondly, statistical algorithms based on  
26 Bayesian filters were applied to separate radiopaque signals belonging to the different layers of the  
27 painting. The algorithms implemented were specially developed for the elaboration of this peculiar  
28 panel's images by the start up DeepTrace Technologies. In figure 1A, we can note the use of two  
29 different kinds of wood for the upper-median portion and the lower portion of the panel. The wood  
30 of the upper-median portion, better extracted by the radiography elaborations (fig. 1C), shows  
31  
32  
33  
34  
35  
36  
37  
38  
39  
40  
41  
42  
43  
44  
45  
46  
47  
48  
49  
50  
51  
52  
53  
54  
55  
56  
57  
58  
59  
60  
61  
62  
63  
64  
65

1 parallel fibres differently from the wood structure visible in the lower part, which is to be attributed  
2 to an intervention made before 1836 (Di Lorenzo and Marani, 2019), that added about 3 cm to the  
3 original project designed by the author.  
4  
5



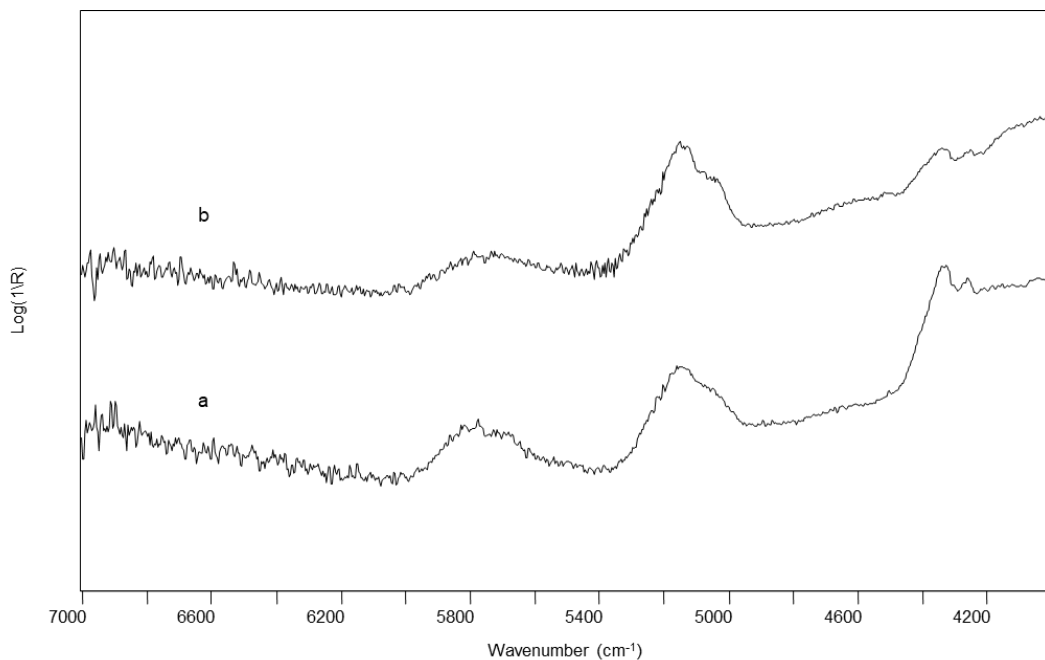
6  
7  
8  
9  
10  
11  
12  
13  
14  
15  
16  
17  
18  
19  
20  
21  
22  
23  
24 Fig 1: A) RX image; B) RX elaborated image highlighting the radiopaque layer of imprimatura; C) RX elaborated image  
25 highlighting the wood panel  
26

27  
28 From the literature, it is also possible to deduce information about *The Virgin and Child (The  
29 Madonna of the Rose)* by Giovanni Antonio Boltraffio. During the restoration carried out ten years  
30 ago (Beccaria, 2014), it was found to be painted on a single panel of walnut, 8 millimetres thick. It  
31  
32  
33  
34  
35  
36  
37  
38  
39  
40  
41  
42  
43  
44  
45  
46  
47  
48  
49  
50  
51  
52  
53  
54  
55  
56  
57  
58  
59  
60  
61  
62  
63  
64  
65

66  
67  
68  
69  
70  
71  
72  
73  
74  
75  
76  
77  
78  
79  
80  
81  
82  
83  
84  
85  
86  
87  
88  
89  
90  
91  
92  
93  
94  
95  
96  
97  
98  
99  
100  
101  
102  
103  
104  
105  
106  
107  
108  
109  
110  
111  
112  
113  
114  
115  
116  
117  
118  
119  
120  
121  
122  
123  
124  
125  
126  
127  
128  
129  
130  
131  
132  
133  
134  
135  
136  
137  
138  
139  
140  
141  
142  
143  
144  
145  
146  
147  
148  
149  
150  
151  
152  
153  
154  
155  
156  
157  
158  
159  
160  
161  
162  
163  
164  
165  
166  
167  
168  
169  
170  
171  
172  
173  
174  
175  
176  
177  
178  
179  
180  
181  
182  
183  
184  
185  
186  
187  
188  
189  
190  
191  
192  
193  
194  
195  
196  
197  
198  
199  
200  
201  
202  
203  
204  
205  
206  
207  
208  
209  
210  
211  
212  
213  
214  
215  
216  
217  
218  
219  
220  
221  
222  
223  
224  
225  
226  
227  
228  
229  
230  
231  
232  
233  
234  
235  
236  
237  
238  
239  
240  
241  
242  
243  
244  
245  
246  
247  
248  
249  
250  
251  
252  
253  
254  
255  
256  
257  
258  
259  
260  
261  
262  
263  
264  
265  
266  
267  
268  
269  
270  
271  
272  
273  
274  
275  
276  
277  
278  
279  
280  
281  
282  
283  
284  
285  
286  
287  
288  
289  
290  
291  
292  
293  
294  
295  
296  
297  
298  
299  
300  
301  
302  
303  
304  
305  
306  
307  
308  
309  
310  
311  
312  
313  
314  
315  
316  
317  
318  
319  
320  
321  
322  
323  
324  
325  
326  
327  
328  
329  
330  
331  
332  
333  
334  
335  
336  
337  
338  
339  
340  
341  
342  
343  
344  
345  
346  
347  
348  
349  
350  
351  
352  
353  
354  
355  
356  
357  
358  
359  
360  
361  
362  
363  
364  
365  
366  
367  
368  
369  
370  
371  
372  
373  
374  
375  
376  
377  
378  
379  
380  
381  
382  
383  
384  
385  
386  
387  
388  
389  
390  
391  
392  
393  
394  
395  
396  
397  
398  
399  
400  
401  
402  
403  
404  
405  
406  
407  
408  
409  
410  
411  
412  
413  
414  
415  
416  
417  
418  
419  
420  
421  
422  
423  
424  
425  
426  
427  
428  
429  
430  
431  
432  
433  
434  
435  
436  
437  
438  
439  
440  
441  
442  
443  
444  
445  
446  
447  
448  
449  
450  
451  
452  
453  
454  
455  
456  
457  
458  
459  
460  
461  
462  
463  
464  
465  
466  
467  
468  
469  
470  
471  
472  
473  
474  
475  
476  
477  
478  
479  
480  
481  
482  
483  
484  
485  
486  
487  
488  
489  
490  
491  
492  
493  
494  
495  
496  
497  
498  
499  
500  
501  
502  
503  
504  
505  
506  
507  
508  
509  
510  
511  
512  
513  
514  
515  
516  
517  
518  
519  
520  
521  
522  
523  
524  
525  
526  
527  
528  
529  
530  
531  
532  
533  
534  
535  
536  
537  
538  
539  
540  
541  
542  
543  
544  
545  
546  
547  
548  
549  
550  
551  
552  
553  
554  
555  
556  
557  
558  
559  
560  
561  
562  
563  
564  
565  
566  
567  
568  
569  
570  
571  
572  
573  
574  
575  
576  
577  
578  
579  
580  
581  
582  
583  
584  
585  
586  
587  
588  
589  
590  
591  
592  
593  
594  
595  
596  
597  
598  
599  
600  
601  
602  
603  
604  
605  
606  
607  
608  
609  
610  
611  
612  
613  
614  
615  
616  
617  
618  
619  
620  
621  
622  
623  
624  
625  
626  
627  
628  
629  
630  
631  
632  
633  
634  
635  
636  
637  
638  
639  
640  
641  
642  
643  
644  
645  
646  
647  
648  
649  
650  
651  
652  
653  
654  
655  
656  
657  
658  
659  
660  
661  
662  
663  
664  
665  
666  
667  
668  
669  
670  
671  
672  
673  
674  
675  
676  
677  
678  
679  
680  
681  
682  
683  
684  
685  
686  
687  
688  
689  
690  
691  
692  
693  
694  
695  
696  
697  
698  
699  
700  
701  
702  
703  
704  
705  
706  
707  
708  
709  
710  
711  
712  
713  
714  
715  
716  
717  
718  
719  
720  
721  
722  
723  
724  
725  
726  
727  
728  
729  
730  
731  
732  
733  
734  
735  
736  
737  
738  
739  
740  
741  
742  
743  
744  
745  
746  
747  
748  
749  
750  
751  
752  
753  
754  
755  
756  
757  
758  
759  
760  
761  
762  
763  
764  
765  
766  
767  
768  
769  
770  
771  
772  
773  
774  
775  
776  
777  
778  
779  
780  
781  
782  
783  
784  
785  
786  
787  
788  
789  
790  
791  
792  
793  
794  
795  
796  
797  
798  
799  
800  
801  
802  
803  
804  
805  
806  
807  
808  
809  
810  
811  
812  
813  
814  
815  
816  
817  
818  
819  
820  
821  
822  
823  
824  
825  
826  
827  
828  
829  
830  
831  
832  
833  
834  
835  
836  
837  
838  
839  
840  
841  
842  
843  
844  
845  
846  
847  
848  
849  
850  
851  
852  
853  
854  
855  
856  
857  
858  
859  
860  
861  
862  
863  
864  
865  
866  
867  
868  
869  
870  
871  
872  
873  
874  
875  
876  
877  
878  
879  
880  
881  
882  
883  
884  
885  
886  
887  
888  
889  
890  
891  
892  
893  
894  
895  
896  
897  
898  
899  
900  
901  
902  
903  
904  
905  
906  
907  
908  
909  
910  
911  
912  
913  
914  
915  
916  
917  
918  
919  
920  
921  
922  
923  
924  
925  
926  
927  
928  
929  
930  
931  
932  
933  
934  
935  
936  
937  
938  
939  
940  
941  
942  
943  
944  
945  
946  
947  
948  
949  
950  
951  
952  
953  
954  
955  
956  
957  
958  
959  
960  
961  
962  
963  
964  
965  
966  
967  
968  
969  
970  
971  
972  
973  
974  
975  
976  
977  
978  
979  
980  
981  
982  
983  
984  
985  
986  
987  
988  
989  
990  
991  
992  
993  
994  
995  
996  
997  
998  
999  
1000

### 3.2 Ground preparation and priming

1 The panel support of *The Virgin and Child* by Boltraffio has been prepared with a layer of gesso  
2 mixed with a siccativ oil. This preparation has been deduced from the comparison of XRF and FTIR  
3 experimental data. XRF detected in all the analysed points (Fig.1Sa) the presence of calcium among  
4 the minor elements; this is probably due to its presence in a deep layer, which leads to the  
5 absorption of its  $k_{\alpha}$  and  $k_{\beta}$  lines (respectively at 3.691 keV and 4.013 keV). Moreover, in the NIR  
6 range (7500-4000  $\text{cm}^{-1}$ ) for all the analysed areas (Fig.1Sa) it was possible to observe at 5140 and  
7 6920  $\text{cm}^{-1}$  the bands of gypsum  $\text{CaSO}_4 \cdot 2\text{H}_2\text{O}$  (Bacci et al., 1995), hypothetically associated with the  
8 preparation layer of the panel (Fig.2). It is interesting to note that in area 3 (Fig.1Sa), which on the  
9 basis of UV analysis appeared to have been restored (Fig.3), the gypsum signals are significantly  
10 stronger than those of the binder.  
11  
12  
13  
14  
15  
16  
17  
18  
19  
20  
21  
22  
23  
24  
25  
26  
27  
28  
29  
30  
31  
32  
33  
34  
35  
36  
37  
38  
39  
40  
41  
42  
43  
44  
45  
46  
47  
48



49 Fig. 2: FT-NIR reflection spectra of (a) area 2 and (b) area 3 of the painting “Virgin and Child” by G. Boltraffio  
50  
51  
52

53 A priming consisting largely of lead based pigment (surely lead white, but with the presence of small  
54 amounts of red lead and lead-tin yellow (Beccaria, 2014) has been applied.  
55  
56  
57

58 As already observed by restorer Carlotta Beccaria in her paper (Beccaria, 2014), this priming layer  
59 appears to have been applied with the painter’s hands, mostly by the palm hands, to spread it onto  
60  
61  
62  
63  
64  
65



1  
2  
3  
4  
5  
6  
7  
8  
9  
10  
11  
12  
13  
14  
15  
16  
17  
18  
19  
20  
21  
22  
23  
24  
25  
26  
27  
28  
29  
30  
31  
32  
33  
34  
35  
36  
37  
38  
39  
40  
41  
42  
43  
44  
45  
46  
47  
48  
49  
50  
51  
52  
53  
54  
55  
56  
57  
58  
59  
60  
61  
62  
63  
64  
65

the surface. In the x-ray image are in fact evident areas in which there is a non-uniform accumulation of priming layer (see fig.3b).



Fig. 3: panel a, on the left, UV image of the Virgin and Child by Boltraffio; panel b, on the right, RX of the Virgin and Child by Boltraffio.

The preparation of panel with gesso and the presence of a priming layer with the addition of earths/ochre have been also observed in the two *Virgin and Child*, both in the one by Napoletano and in the other by the unknown painter of the Lombard school.

Different are the cases of the Christ Child by d'Oggiono and the Virgin feeding the Child by an unknown painter of the Lombard school. For the latter panel, no evidence of preparation was found: neither XRF detects calcium, neither Raman nor FT-NIR spectroscopies individuate the typical bands of gypsum. Moreover, the priming seems to be layered with the same technique used by Boltraffio in *Virgin of Rose*: the X-ray image (fig.4) shows areas with different density distributed as leopard spots.

1  
2  
3  
4  
5  
6  
7  
8  
9  
10  
11  
12  
13  
14  
15  
16  
17  
18  
19  
20  
21  
22  
23  
24  
25  
26  
27  
28  
29  
30  
31  
32  
33  
34  
35  
36  
37  
38  
39  
40  
41  
42  
43  
44  
45  
46  
47  
48  
49  
50  
51  
52  
53  
54  
55  
56  
57  
58  
59  
60  
61  
62  
63  
64  
65



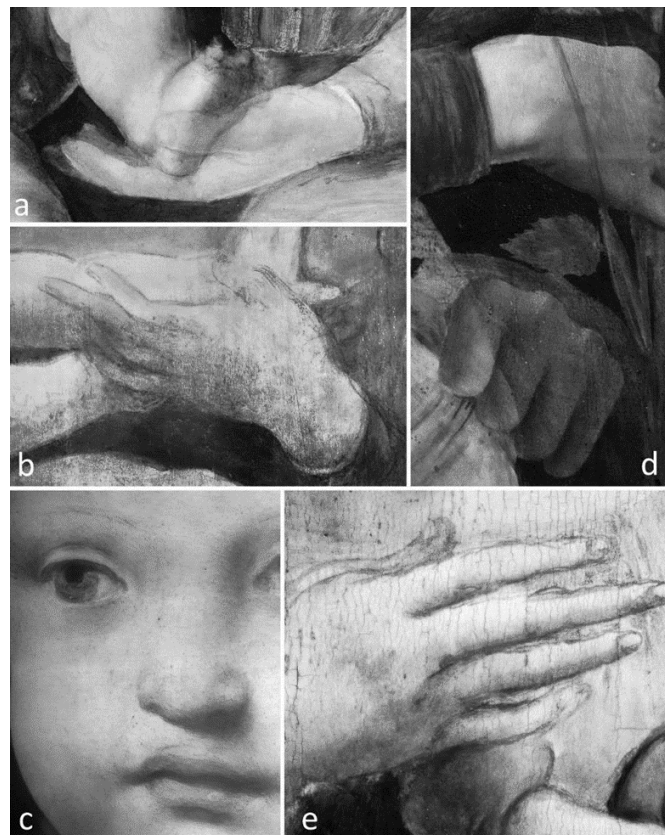
Fig.4: RX of the Virgin feeding the Child

Also in the case of *The Christ Child* by d'Oggiono, no gypsum preparation was observed, except in the lower part of the painting that was in fact added later, as already pointed out, probably in the 19<sup>th</sup> century, to enlarge its size.

### 3.3 Underdrawing

The heterogeneous procedures for realizing the considered artworks is confirmed by the study of underdrawings. Through the high-resolution reflectographic investigation, carried out using the InGaAs scanning system described above, it was in fact possible to detect the presence of

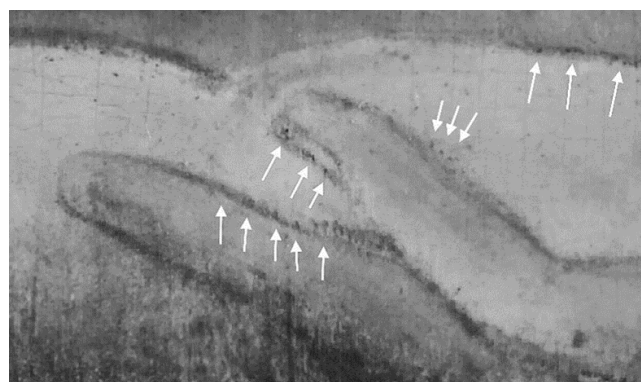
1 underdrawings in all the investigated panels thank to the good penetration into the paint layers. In  
2 Fig. 5 an overview of the five panels and their representative underdrawings is shown. As a basis for  
3 comparison the drawing of the hand was selected, except for *The Christ Child* panel where a detail of  
4 the Child face is shown. A fluid carbon based medium applied with brush was found for *The Virgin*  
5 *feeding the Child* (Fig 5-a) and in *The Madonna of the Rose* (Fig5-d) and Napoletano's painting (Fig.  
6 *feeding the Child* (Fig 5-a) and in *The Madonna of the Rose* (Fig5-d) and Napoletano's painting (Fig.  
7 5-e) where the drawing is particularly bold and sketched. For *The Christ Child* by Marco d'Oggiono  
8 (Fig. 5-c) a thin dry material trace was used to define the face elements, with the presence of a fine  
9 and detailed hatching for the shadows such as under the eyebrows and between the lips and the  
10 nose. In *The Virgin and Child* of the Lombard school (Fig. 5-b) a dry material was also used for the  
11 underdrawings. In all the paintings, the drawing appears to be made freehand: there are in fact  
12 slight modifications at this stage.



13  
14  
15  
16  
17  
18  
19  
20  
21  
22  
23  
24  
25  
26  
27  
28  
29  
30  
31  
32  
33  
34  
35  
36  
37  
38  
39  
40  
41  
42  
43  
44  
45  
46  
47  
48  
49  
50  
51  
52  
53  
54  
55  
56  
57 Fig. 5. Representation of the different types of underdrawing found in the five panels under investigation. a) A fluid  
58 carbon based medium applied with brush was found for the Virgin and child d) in the Madonna of the Rose and e) for  
59 the Napoletano's painting where the drawing is particularly bold and free. For the c) Christ Child by Marco d'Oggiono a  
60

1 thin dry material trace was used to define the face elements, with the presence of a fine and detailed hatching for the  
2 shadows. In the Virgin and Child of the Lombard school b) a dry material was also used for the underdrawing.  
3

4 No evident traces of drawing transfer from possible cartoons were found except for *The Virgin and*  
5  
6 *Child* of the Lombard school where limited and possible signs of pouncing were found in  
7  
8 correspondence of the fingers (Fig. 6). Modification of the sketch are particularly interesting for two  
9  
10 paintings: the Lombard school and the Napoletano panels. For *The Virgin feeding the Child* panel,  
11  
12 several changes to the last version were made: (see Fig.2S in supplementary materials) for the Child,  
13  
14 a shift of the fingers of the hand on the breast is present (Fig. 7-a), for the Virgin, a different position  
15  
16 of one of her hands (Fig. 7-c). Comparing these two details acquired in the 1000-1700 nm range, it  
17  
18 is noteworthy the evidence of two types of drawing materials, a fluid diluted ink applied with brush  
19  
20 for the hand of the Child and a dry trace for the hand of the Virgin. It is interesting to note a detailed  
21  
22 drawing of the head of the Virgin even under the veil that finally covers it (Fig. 7-b). The most  
23  
24 important and radical modifications were however carried out on the background, which originally  
25  
26 were realized as a vertical and rock-like landscaping, visible also beneath the curtain, with a building  
27  
28 that almost entirely covered the portion of the background on the left (Fig. 8). This finding explains  
29  
30 the results already obtained in 1988 for a stratigraphical sampling in the curtain area, when a  
31  
32 layering of vermillion over azurite was detected (Antonietta Gallone, 1988).  
33  
34  
35  
36  
37  
38  
39  
40  
41  
42



56  
57 Fig. 6. Detail of the reflectogram for the Christ Child by Marco d'Oggiono: possible and limited traces of pouncing were  
58 found in correspondence of the fingers of the Virgin (white arrows).  
59  
60  
61  
62  
63  
64  
65

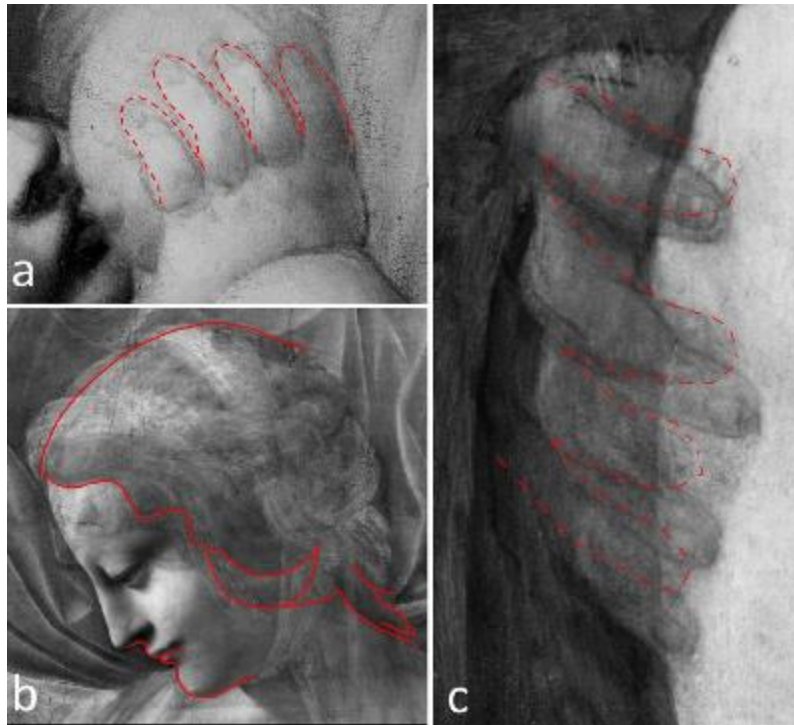


Fig. 7. Set of reflectographic details of the Virgin and Child of Lombard school. In these reflectograms it is possible to note modifications in the underdrawing (a, c) with a repositioning of the fingers of the hands and b) a detailed drawing for the face and hair of the Virgin after having them covered with the application of the veil.



Fig.8. Virgin and Child of Lombard school, in the IR reflectogram is clearly showed that originally the background were realized as a vertical and rock-like landscaping, visible also beneath the curtain, with a building on the left that almost entirely covered the portion of the background.

For *The Virgin and Child* by Napoletano, beside the presence of a fluid freehand drawing with small changes in the paintings in many anatomical parts of the two figures, the most interesting finding is related to the presence of black fingerprints in various areas of the white background. In Fig. 9 is shown the IR reflectography of the neck of the Virgin where two distinct fingerprints have been firmly placed to add a dark background to the slope of the neckline painted subsequently. Other



fingerprints were found also in other parts of the painting, again to darken, blend or connect some anatomical features.



Fig. 9. IR reflectography of the neck of the Virgin: two distinct fingerprints have been firmly placed to add a dark background to the slope of the neckline painted subsequently.

### 3.4 Paint layers

The synergy between the imaging techniques and the spot spectroscopies gave us the possibility to infer the palette used by the five authors in the studied paintings with a complete non-invasive protocol. By studying the result of the UVF and microscope images, with the help of restorers, the areas to be analysed by spot techniques have been chosen. Regarding the painting materials, it is well known that in the Leonardo's workshop, exchange of drawings and ideas often occurred between pupils (M. Spring et al., 2011), so it is not surprising that the pigments used in all the five studied paintings are recurring. The chromatic effects were obtained with vermilion, lakes, earth in different shades (yellow, brown, red and golden), azurite and natural ultramarine, the blue from lapis lazuli stones, and lead based yellow. This section presents an overview of the detected pigments along with the speculated stratigraphic sequence of the pictorial layers for the most interesting cases; a complete summary of the results is reported in table 1.

Table 1: Overview of the pigment recognised in the considered paintings (for the collocation of measure points see fig. 1S a-e).

Points	Colour	Description	Pigment from the synergy of spectroscopic techniques
<b>a</b>			
<b>Boltraffio, The Madonna of the Rose, Poldi Pezzoli Museum</b>			
1, 2, 5, 10, 13	Skin tones	Virgin/Child	Yellow Ochre, Vermillion, White Lead
3	Black	Background	Ochres in organic black
4, 16	Red	Flower	Vermillion
6	Light blue	Virgin dress	Azurite, Ultramarine
15		Virgin dress	Azurite, Ultramarine, Red Ochre (Hematite)

7, 14	Dark red	Child belt/Virgin dress	Vermillion (organic pigments cannot be excluded)*
8, 9	Brown	Virgin and Child hair	Yellow Ochre, Red Ochre
11, 12	Yellow	Virgin dress	Yellow Ochre, Red Ochre
17	Green	Leaf	Ochres
<b>b</b>	<b>Lombard School, The Virgin feeding the Child , Poldi Pezzoli Museum</b>		
1, 6	Skin tones	Child	Yellow Ochre, Vermillion, White Lead
2	Dark red	Cushion	Vermillion, Red Ochre with gold details
10, 20		Tenda	Vermillion, Red Ochre
2 bis	Ligh blue	Cushion detail	Azurite, Ultramarine
4, 5, 11, 14		Virgin dress and veil	Azurite, Ultramarine (gold traces)
8, 16, 17		Sky	Azurite, Ultramarine
15		Mountains	Azurite, Ultramarine
3	Ochre	Windowsill	Yellow Ochre
7		Child hair	Yellow Ochre
13, 13 bis		Virgin dress edge	Yellow Ochre
9, 19	Light red	Tenda	Vermillion, Red Ochre
12	Green	Virgin veil	Azurite, Green Earth
18	Not considered		
<b>c</b>	<b>Marco D'Oggiono, The Christ Child, Poldi Pezzoli Museum</b>		
1, 3	Skin tones	Face	Lead-tin yellow Type I ,Yellow Ochre, Vermillion, White Lead
6		Neck	Yellow Ochre, Vermillion, White Lead
7		Shoulder (restoration)	Lead-tin yellow Type I ,Yellow Ochre, Vermillion, White Lead
2	Red	Lips	Vermillion, Red Ochre
4	Brown	Hair	Lead-tin yellow Type I ,Yellow Ochre, gold
5		Hair (restoration)	Yellow Ochre
8, 13, 14	Blue	Dress (restoration)	Azurite
9		Dress	Azurite
10, 15	Dark brown	Background (restoration)	Azurite with organic pigments
11		Background	Azurite with organic pigments
12	White	Eye	White Lead
<b>d</b>	<b>Francesco Galli (Napoletano), The Virgin and Child, Brera Museum</b>		
1, 5, 6, 18	Brown	Background	Ochres
2, 3, 10, 16	Skin tones	Virgin/ Child	Yellow Ochre, Vermillion, White Lead
7, 8, 17	Yellow	Virgin halo, hair and veil fringe	Ochres (with gold details)
13		Virgin dress inside	Lead-tin yellow Type I, Ochres, gold details
9	Light blue	Sky	Azurite
12, 15		Virgin	Azurite with gold details
11	Red	Virgin dress	Lake (animal red dye, kermes?), Vermillion
14		Virgin dress	Vermillion
<b>e</b>	<b>Lombard School, The Virgin and Child, Palazzo Borromeo, Isola Bella</b>		
1	Skin tones	Child leg	Lead-tin yellow Type I , Vermillion, White Lead
5		Child lips	Lead-tin yellow Type I ,Yellow Ochre, Vermillion, White Lead
2, 10, 12		Virgin	Lead yellow, Vermillion, White Lead
3, 11	Blue	Virgin dress	Azurite
4	Brown	Virgin dress	Yellow Ochre, Azurite
6	Ochre	Child halo	Yellow Ochre (Azurite from the sky behind)
7	Ochre	Child hair	Yellow Ochre
8	Light Blue	Mountains	Azurite
9		Sky	Azurite

1 Starting from these results, taking advantage of the hyperspectral imaging (HYS) on the whole  
2 surface, the materials locally individuated by the comparison of data acquired by XRF, FORS, Raman  
3 and FTIR analyses have been detected and mapped in the paintings, with adequate data-processing  
4 methods.  
5

6  
7  
8  
9  
10 It is well known that the HYS systems capture images at a large number of spectral bands and can  
11 identify materials with unique spectral features (Delaney et al., 2005; Legrand et al., 2014), which is  
12 a significant advantage compared with spectroscopic spot analyses. However, the spectral  
13 resolution of spectroscopic techniques is still much higher than that of HYS system (in our case: 2.7  
14 nm spectral resolution for the FORS system versus 7 nm for the HSY instrument): for this reason, in  
15 the present work, the former have been used to support the processing and interpretation of HSY  
16 results.  
17

18  
19  
20  
21  
22  
23 In the following, for each painting, some peculiar aspects will be discussed, starting from *The Virgin*  
24  
25  
26  
27  
28  
29  
30  
31  
32  
33  
34  
35  
36  
37  
38  
39  
40  
41  
42  
43  
44  
45  
46  
47  
48  
49  
50  
51  
52  
53  
54  
55  
56  
57  
58  
59  
60  
61  
62  
63  
64  
65  
66  
67  
68  
69  
70  
71  
72  
73  
74  
75  
76  
77  
78  
79  
80  
81  
82  
83  
84  
85  
86  
87  
88  
89  
90  
91  
92  
93  
94  
95  
96  
97  
98  
99  
100  
101  
102  
103  
104  
105  
106  
107  
108  
109  
110  
111  
112  
113  
114  
115  
116  
117  
118  
119  
120  
121  
122  
123  
124  
125  
126  
127  
128  
129  
130  
131  
132  
133  
134  
135  
136  
137  
138  
139  
140  
141  
142  
143  
144  
145  
146  
147  
148  
149  
150  
151  
152  
153  
154  
155  
156  
157  
158  
159  
160  
161  
162  
163  
164  
165  
166  
167  
168  
169  
170  
171  
172  
173  
174  
175  
176  
177  
178  
179  
180  
181  
182  
183  
184  
185  
186  
187  
188  
189  
190  
191  
192  
193  
194  
195  
196  
197  
198  
199  
200  
201  
202  
203  
204  
205  
206  
207  
208  
209  
210  
211  
212  
213  
214  
215  
216  
217  
218  
219  
220  
221  
222  
223  
224  
225  
226  
227  
228  
229  
230  
231  
232  
233  
234  
235  
236  
237  
238  
239  
240  
241  
242  
243  
244  
245  
246  
247  
248  
249  
250  
251  
252  
253  
254  
255  
256  
257  
258  
259  
260  
261  
262  
263  
264  
265  
266  
267  
268  
269  
270  
271  
272  
273  
274  
275  
276  
277  
278  
279  
280  
281  
282  
283  
284  
285  
286  
287  
288  
289  
290  
291  
292  
293  
294  
295  
296  
297  
298  
299  
300  
301  
302  
303  
304  
305  
306  
307  
308  
309  
310  
311  
312  
313  
314  
315  
316  
317  
318  
319  
320  
321  
322  
323  
324  
325  
326  
327  
328  
329  
330  
331  
332  
333  
334  
335  
336  
337  
338  
339  
340  
341  
342  
343  
344  
345  
346  
347  
348  
349  
350  
351  
352  
353  
354  
355  
356  
357  
358  
359  
360  
361  
362  
363  
364  
365  
366  
367  
368  
369  
370  
371  
372  
373  
374  
375  
376  
377  
378  
379  
380  
381  
382  
383  
384  
385  
386  
387  
388  
389  
390  
391  
392  
393  
394  
395  
396  
397  
398  
399  
400  
401  
402  
403  
404  
405  
406  
407  
408  
409  
410  
411  
412  
413  
414  
415  
416  
417  
418  
419  
420  
421  
422  
423  
424  
425  
426  
427  
428  
429  
430  
431  
432  
433  
434  
435  
436  
437  
438  
439  
440  
441  
442  
443  
444  
445  
446  
447  
448  
449  
450  
451  
452  
453  
454  
455  
456  
457  
458  
459  
460  
461  
462  
463  
464  
465  
466  
467  
468  
469  
470  
471  
472  
473  
474  
475  
476  
477  
478  
479  
480  
481  
482  
483  
484  
485  
486  
487  
488  
489  
490  
491  
492  
493  
494  
495  
496  
497  
498  
499  
500  
501  
502  
503  
504  
505  
506  
507  
508  
509  
510  
511  
512  
513  
514  
515  
516  
517  
518  
519  
520  
521  
522  
523  
524  
525  
526  
527  
528  
529  
530  
531  
532  
533  
534  
535  
536  
537  
538  
539  
540  
541  
542  
543  
544  
545  
546  
547  
548  
549  
550  
551  
552  
553  
554  
555  
556  
557  
558  
559  
560  
561  
562  
563  
564  
565  
566  
567  
568  
569  
570  
571  
572  
573  
574  
575  
576  
577  
578  
579  
580  
581  
582  
583  
584  
585  
586  
587  
588  
589  
590  
591  
592  
593  
594  
595  
596  
597  
598  
599  
600  
601  
602  
603  
604  
605  
606  
607  
608  
609  
610  
611  
612  
613  
614  
615  
616  
617  
618  
619  
620  
621  
622  
623  
624  
625  
626  
627  
628  
629  
630  
631  
632  
633  
634  
635  
636  
637  
638  
639  
640  
641  
642  
643  
644  
645  
646  
647  
648  
649  
650  
651  
652  
653  
654  
655  
656  
657  
658  
659  
660  
661  
662  
663  
664  
665  
666  
667  
668  
669  
670  
671  
672  
673  
674  
675  
676  
677  
678  
679  
680  
681  
682  
683  
684  
685  
686  
687  
688  
689  
690  
691  
692  
693  
694  
695  
696  
697  
698  
699  
700  
701  
702  
703  
704  
705  
706  
707  
708  
709  
710  
711  
712  
713  
714  
715  
716  
717  
718  
719  
720  
721  
722  
723  
724  
725  
726  
727  
728  
729  
730  
731  
732  
733  
734  
735  
736  
737  
738  
739  
740  
741  
742  
743  
744  
745  
746  
747  
748  
749  
750  
751  
752  
753  
754  
755  
756  
757  
758  
759  
760  
761  
762  
763  
764  
765  
766  
767  
768  
769  
770  
771  
772  
773  
774  
775  
776  
777  
778  
779  
780  
781  
782  
783  
784  
785  
786  
787  
788  
789  
790  
791  
792  
793  
794  
795  
796  
797  
798  
799  
800  
801  
802  
803  
804  
805  
806  
807  
808  
809  
810  
811  
812  
813  
814  
815  
816  
817  
818  
819  
820  
821  
822  
823  
824  
825  
826  
827  
828  
829  
830  
831  
832  
833  
834  
835  
836  
837  
838  
839  
840  
841  
842  
843  
844  
845  
846  
847  
848  
849  
850  
851  
852  
853  
854  
855  
856  
857  
858  
859  
860  
861  
862  
863  
864  
865  
866  
867  
868  
869  
870  
871  
872  
873  
874  
875  
876  
877  
878  
879  
880  
881  
882  
883  
884  
885  
886  
887  
888  
889  
890  
891  
892  
893  
894  
895  
896  
897  
898  
899  
900  
901  
902  
903  
904  
905  
906  
907  
908  
909  
910  
911  
912  
913  
914  
915  
916  
917  
918  
919  
920  
921  
922  
923  
924  
925  
926  
927  
928  
929  
930  
931  
932  
933  
934  
935  
936  
937  
938  
939  
940  
941  
942  
943  
944  
945  
946  
947  
948  
949  
950  
951  
952  
953  
954  
955  
956  
957  
958  
959  
960  
961  
962  
963  
964  
965  
966  
967  
968  
969  
970  
971  
972  
973  
974  
975  
976  
977  
978  
979  
980  
981  
982  
983  
984  
985  
986  
987  
988  
989  
990  
991  
992  
993  
994  
995  
996  
997  
998  
999  
1000

In the following, for each painting, some peculiar aspects will be discussed, starting from *The Virgin and Child* by Boltraffio. In the last years, this panel has been submitted to different restoration works; during the 2011 intervention conducted by Carlotta Beccaria, it has been decided to remove some old instances of restoration that obscured the definition of the drapery of Virgin's cloak, making it less legible and flattening its form (Beccaria, 2014). Therefore, it has been interesting to study the original materials resurfaced: the blue drapery was originally painted applying a light under-layer containing lead white and azurite, covered by a layer of natural ultramarine. In fact, the blue areas investigated (points 6, and 15) show, based on the FORS spectra (fig.10a), the use of ultramarine. The presence of azurite, possibly mixed with white lead, is identifiable as an underlying stratum because of the high quantity of copper detected by XRF; the Raman spectroscopy performed on the areas 15 and 18 (see fig.1Sa) shows the band at 1314 cm<sup>-1</sup> assigned to a two-magnon scattering which arise from the interaction of two magnons created on antiparallel close spin sites in  $\alpha$ -Fe<sub>2</sub>O<sub>3</sub> (Hematite), see fig. 10b. Hematite perhaps belongs to a lower stratum, since



the superficial layer is very much thinned, as the image at digital microscope acquired in the area 15 shows (Fig. 10c): there is a very thin-layered sequence in which the presence of a superficial layer of ultramarine and the presence of few red/brown grains are evident.

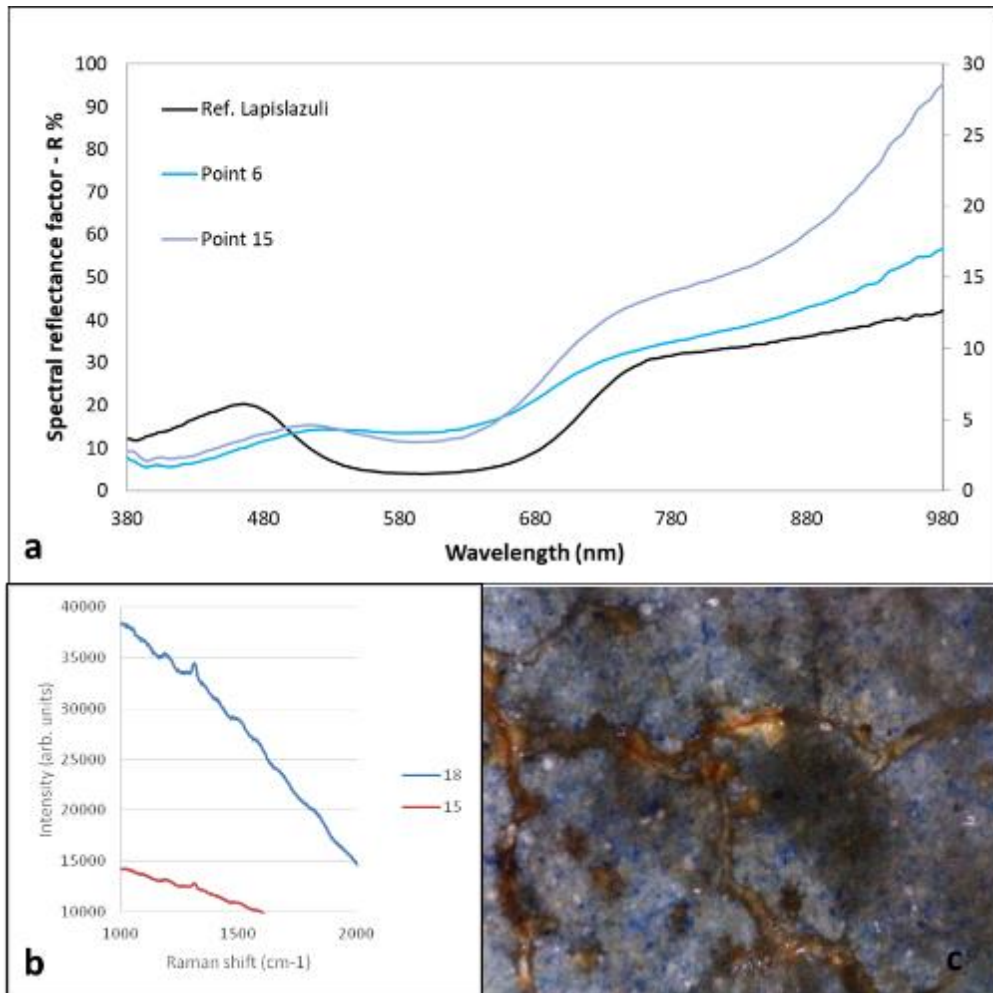


Fig.10: FORS (a) and Raman (b) spectra for the investigated blue areas on Boltraffio's Virgin and Child; corresponding digital microscope image is reported in (c).

It is precisely the presence of a precious pigment such as natural ultramarine, also spread in the landscape on the background and in the sky, that induce scholars to rethink the commission of *The Virgin feeding the Child* panel by the anonymous painter. Surprising is the use of this pigment for details negligible in the construction of the painting, such as the cushion's buttons (Fig. 11a); in fact, the Raman spectrum acquired on the 2\_bis point (Fig.11b), shows the ( $S_3^-$ ) symmetric stretching mode at 549 cm<sup>-1</sup> ascribable to lapis lazuli (Hark and Clark, 2010).

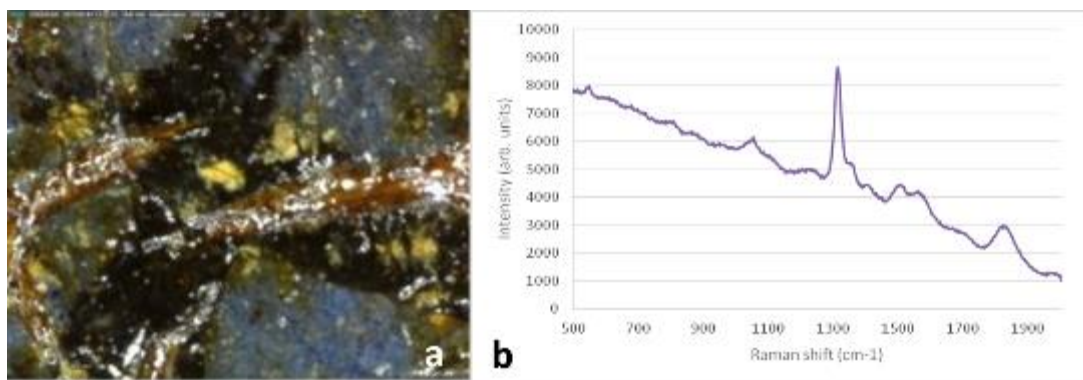


Fig.11: Blue detail for the button in the Virgin feeding the Child panel: digital microscope image (a) and Raman spectrum (b).

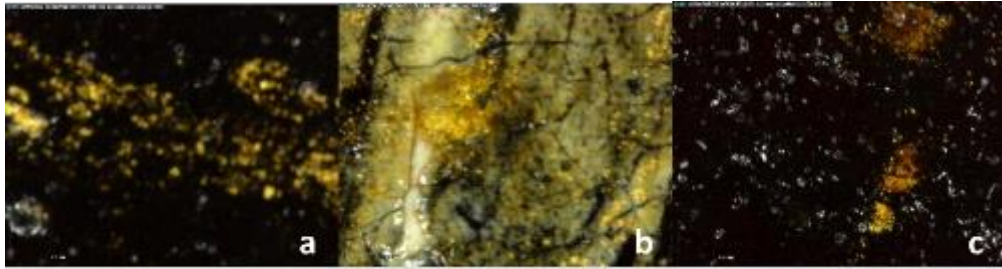
Moreover, the bands at  $1314\text{ cm}^{-1}$  and  $1355\text{ cm}^{-1}$  are present; they are two fluorescence emission bands resulting from an electronic mechanism activated by exposure of one of the associated minerals in this lapis lazuli sample to  $785\text{ nm}$  radiation.

The band at  $1,050\text{ cm}^{-1}$  is due to the presence of Lead white (hydrocerussite (lead(II) carbonate / lead(II) hydroxide).

The IRFC image helps in correctly mapping some of the pigments found on this painting with the above mentioned technique. The most interesting results are the characteristic purple color of the ultramarine and the yellow false color of vermilion used for the rose. (Fig. 3S in supplementary materials)

Also in his panel, Francesco Galli used precious materials; in particular, gold has been observed in many areas (see table 1). In the halo (point 7, fig. 1S), the veil on the hair (point 8 fig. 1S), the dress (point 13 fig. 1S) and the golden fringe of the Virgin's veil (point 17 fig. 1S) it was detected together with copper, iron and lead by XRF. By comparing these data with those acquired with FORS and Raman spectroscopy, the presence of yellow ochre can be deduced. Moreover, in points 7 (fig. 12a), 8 (fig.12b) and 17 gold was used (fig. 12c), while at point 13 there was lead-tin yellow.

1 These results are interesting because confirm the hypothesis given by the restorer of Brera Art  
2 Gallery, Paola Borghese (Borghese, 2019), about the presence of a veil with golden fringes placed  
3  
4 on the head of the Virgin, the veil the Child is playing with.  
5  
6



7  
8  
9  
10  
11  
12  
13  
14  
15  
16  
17  
18 Fig. 12: Details of Francesco Galli panel, showing gold traces: a) point 7, the Virgin halo, b) point 8, the Virgin veil, c)  
19 point 17, the Virgin dress.  
20  
21

22 For this panel, it was also possible to identify the red lake used for glazing with *velatura* technique  
23 the Virgin's dress. Red lakes were prepared from dyes both of vegetal (safflower, madder, and  
24 sappanwood) and animal (cochineal, kermes, and lac dye) origin, belonging to different molecular  
25 classes but especially to that of anthraquinones. In an extensive study about the painting materials  
26 used by the Milanese school at the end of the 15<sup>th</sup> century (M. Spring et al., 2011), the use of both  
27 madder and kermes lakes was demonstrated by chromatographic analyses. In the present work, by  
28 measuring visible-excited optical fluorescence, the red lake in the painting by Francesco Galli could  
29 be recognised as deriving from a dye of animal origin, most probably kermes (Fig. 4S in  
30 supplementary materials). Also UVF images showed the presence of a red lake with its typical  
31 reddish-orangey fluorescence while in the IRFC image the azurite dress was highlighted. (Fig. 5S in  
32 supplementary materials)  
33  
34  
35  
36  
37  
38  
39  
40  
41  
42  
43  
44  
45  
46  
47  
48  
49  
50

51 The unknown master who painted *The Virgin and Child* used an unusual mixture of azurite and  
52 yellow ochre to paint the Virgin's dress, reaching a very peculiar chromatic effect. This mixture can  
53 be mapped by chosen as end-member the reflectance curve acquired on the dress (point 4 in fig.1S);  
54  
55  
56  
57  
58  
59  
60  
61  
62  
63  
64  
65

as a result of the mapping procedure, performed on the basis of the SAM algorithm, we obtain the image shown in fig.13, a-c.

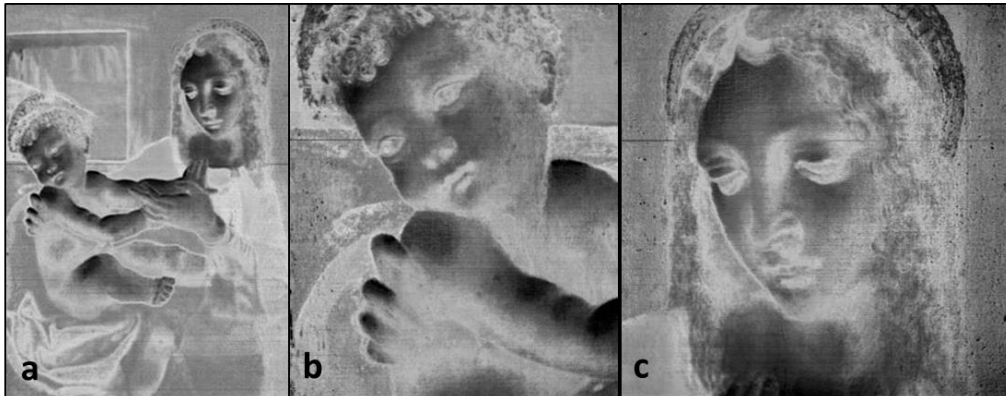


Fig. 13: Result of the mapping procedure for azurite and yellow ochre mixture in the unknown master panel, obtained on the bases of the SAM algorithm (a, the whole panel, b, The Child detail, c) the virgin face). Lighter parts show a higher similarity, darker ones a higher difference.

One similarity map,  $I(x, y, 4)$ , has been created by considering as reference the spectrum measured in point 4 (Fig. 1S). The reflectance curve shows a behaviour ascribable to yellow ochre (see the two band at 580 nm and 780 nm fig. 14) with the contribution of an additional pigment that, considering the specific reflectance rise in the wavelength range above 880 nm, could be azurite.

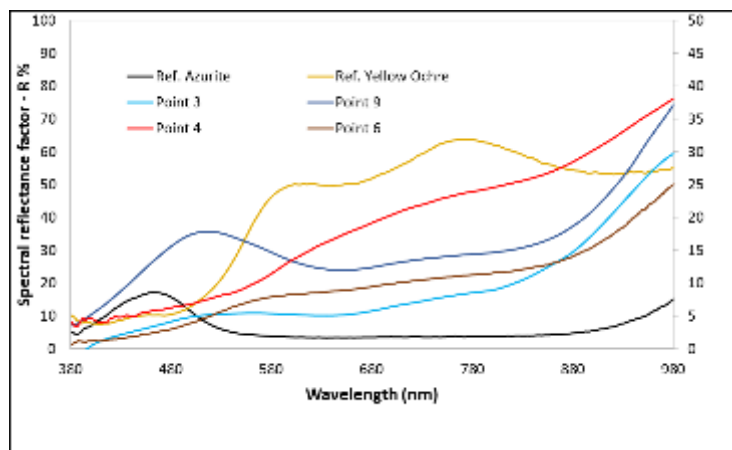
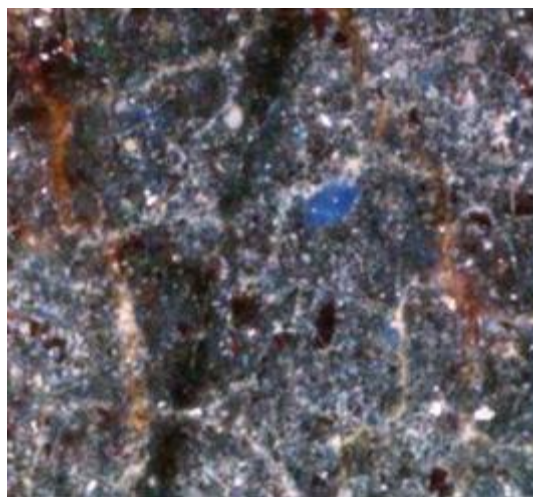


Fig.14: reflectance spectra for the Virgin and Child pane by an unknown painter (for the point location, see fig. 1S)

Moreover, analysing the results obtained in the same area by the comparison between XRF, Raman and FT-NIR data, we can deduce the presence of both azurite and yellow ochre. The presence of these two pigments is evident in the similarity map: in fact, the area of the Virgin's dress can be

1 classified into two sub-regions with different spectral features: there are areas with a blue  
2 background with superimposed a yellow-brown painted layer. Moreover, there are other areas in  
3  
4 which the mean reflectance spectrum of the blue background reveals spectral features similar to  
5  
6 those of the blue pigment (identified as azurite) of Virgin's cloak and of mountain in the right part  
7  
8 of the panel. The superimposed brown-yellowish layer reveals common features to yellow ochre  
9  
10 of the panel. The superimposed brown-yellowish layer reveals common features to yellow ochre  
11  
12 that characterises the pigments mixture applied by the Master for the lips and the eyes of the Child  
13  
14 (see fig.13b) and for the features and the shadows of Virgin's face (see fig. 13c). UVF image (Fig. 6S  
15  
16 in supplementary materials) shows a damaged painting layers with many conservation interventions  
17  
18 applied on the entire painting surface while the IRFC image helps in showing the distribution of  
19  
20 azurite in the dress.  
21  
22  
23  
24

25 Particular is also how Marco d'Oggiono constructed the background in *The Christ Child* panel: in the  
26  
27 visible range, the background appears very dark, but both FORS and XRF analyses confirm the  
28  
29 presence of azurite, probably in addition to some organic brown/black pigments, as evident from  
30  
31 the OM image (see fig.15) which highlights a blue hue diffuse with few inclusions of a brilliant light  
32  
33  
34  
35  
36 blue.  
37  
38



39  
40  
41  
42  
43  
44  
45  
46  
47  
48  
49  
50  
51  
52  
53  
54  
55  
56 Fig.15: Digital microscope image for the dark background of the painting by Marco d'Oggiono.  
57  
58  
59  
60  
61  
62  
63  
64  
65

1 UVF analysis carried out during the conservation interventions, showed several integration areas  
2 positioned mainly in correspondence of the Child face and in the lower part of the panel. In this part  
3  
4 there is in fact a junction that extends the height of the panel. IRFC showed the use of vermilion for  
5  
6 the lips and highlights many retouching areas on the mantle of the Virgin.  
7  
8

9  
10 Analyzing the painting under UV light, we mapped limited conservation interventions that appears  
11  
12 as non-fluorescent areas. IRFC, as in the previous cases, highlights the Vermilion areas such as for  
13  
14 the curtain and for the lapel and the purple false colour areas corresponding to the lapis lazuli used  
15  
16 for the mantle of the Virgin, the background and the sky.  
17  
18

### 19 **3.5 Binders**

20  
21 For all the examined areas of the five paintings of Leonardesque school, overtone and combination  
22  
23 bands characteristic of siccative oils could be detected in the FT-NIR spectra at 4264, 4336, 5690  
24  
25 and 5784  $\text{cm}^{-1}$  (Vagnini et al., 2009). Just in a detail of the hair of the Virgin in *The Virgin and Child*  
26  
27 of unknown painter, the presence of gum arabic besides oil could be hypothesized, based on bands  
28  
29 at 4020, 4750 and 5175  $\text{cm}^{-1}$  (Dong et al., 2017).  
30  
31  
32  
33

34  
35 More challenging is instead the identification of the specific siccative oil used by the painters. To  
36  
37 this aim, first-derivative of the spectra were calculated (Vagnini et al., 2009) and compared with  
38  
39 those recorded for reference materials. In the already cited study about the painting practice of the  
40  
41 Milanese Leonardo's pupils (M. Spring et al., 2011), analyses by gas chromatography-mass  
42  
43 spectrometry confirmed that those artists usually employed an oil binder, supposed to be in most  
44  
45 cases walnut oil. In the present study, reference samples were prepared by spreading fresh walnut  
46  
47 and linseed oils on microscope glasses and then letting them dry, both naturally and by mild heating  
48  
49 in an oven at 100 °C for 72 hours. The linseed oil sample was also submitted to light-induced ageing  
50  
51 by a 6.5 hours-exposition to an Osram Powerstar lamp, with 150 W nominal power and emission  
52  
53 between 390 and 600 nm. In all cases, the two oils showed different first-derivative spectral  
54  
55  
56  
57  
58  
59  
60  
61  
62

1 patterns, especially regarding the component around  $4400\text{ cm}^{-1}$ , with slight shifts and changes in  
2 the relative intensities of the peaks (fig. 16a and 16f). On these bases, it was tentatively supposed  
3 that the binder was indeed walnut oil, possibly heated (M. Spring et al., 2011), in the examined areas  
4 of *The Virgin and Child* by Galli (fig. 16e) and of *The Virgin feeding the Child* by unknown author.  
5 More variable results were obtained for the details considered in *The Virgin and Child* painted by  
6 Boltraffio. In fact, the first-derivative of the spectrum recorded on a detail from the black  
7 background resembled more closely that of linseed oil (fig. 16b), while for other areas the  
8 compresence of different oils, possibly also in superimposed layers, could not be ruled out.  
9 Interestingly, similar results were obtained by chromatographic analyses reported in the literature  
10 for samples from the same and also another painting by Boltraffio (Beccaria, 2014; M. Spring et al.,  
11 2011). Again, the use of walnut oil, but without completely excluding the presence of linseed oil,  
12 was suggested by the first-derivative NIR spectra also for *The Virgin and Child* of the Lombard school.  
13 A peculiar situation was encountered for *The Christ Child* by D'Oggiono, that could be analysed both  
14 before and after restoration. It should be recalled that the painting had been enlarged by a later  
15 addition of a wooden support, painted in imitation of the original work, and thus it had been  
16 probably glazed to make it homogeneous. Before removal of the later glaze, NIR spectra resembling  
17 that of walnut oil were obtained (fig. 16d), while, after cleaning, a greater similarity with linseed oil  
18 was observed (fig. 16c). Therefore, it can be supposed that linseed oil was the original binder for the  
19 *Christ Child*, while walnut oil was employed in the 19<sup>th</sup>-century restoration.  
20  
21  
22  
23  
24  
25  
26  
27  
28  
29  
30  
31  
32  
33  
34  
35  
36  
37  
38  
39  
40  
41  
42  
43  
44  
45  
46  
47  
48  
49  
50  
51  
52  
53  
54  
55  
56  
57  
58  
59  
60  
61  
62  
63  
64  
65



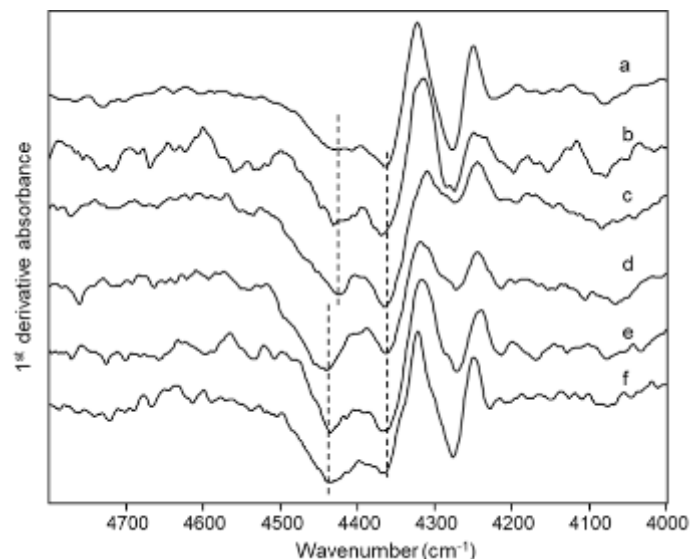


Fig. 16: First derivative of FT-NIR reflection spectra of: (a) linseed oil on a glass slide after 1-year ageing; (b) area 15 of the Virgin and Child by Boltraffio; (c) area 10 of the Christ Child by D'Oggiono (after cleaning); (d) area 3 of the Christ Child by D'Oggiono (before cleaning); (e) area 5 of the Virgin and Child by Galli; (f) walnut oil on a glass slide after heating at 100 °C for 72 hours. Dashed lines indicate the peaks whose positions and relative intensities were used to distinguish the two oils.

#### 4 CONCLUSIONS

The project “Leonardeschi oltre il visibile” (Leonardesque Artists beyond the Visible), funded by Fondazione Bracco and whose main results are given in the present paper, is a good example of the synergy of scientific, conservation and humanistic studies since its planning. Working strictly in contact with art historians, restorers and curators of an important exhibition has enhanced the possibilities of technical analyses, giving focuses on the interesting puzzling themes. This is reflected also in the exhibition catalogue where the artwork records are linked to the results of scientific investigations, in the spirit of the studied Renaissance.

This same research also proved to be a good training for new technical and methodological developments, resulting in the possibility of a more complete, non-invasive, survey of both organic and inorganic materials. Also data analyses have been strengthening and developed to allow an easier and more effective handling of large sets of data from imaging techniques: in particular SAM (Spectral Angle Mapper) analyses applied to hyperspectral images and appropriate mathematical



1 processes on Radiographic images opened a new way to the elaboration of data from Cultural  
2 Heritage artefacts.  
3

4  
5 The possible attribution of masterpieces is beyond the aims of the present research, but surely  
6  
7 systematic studies through physical and chemical analyses can cast new light on the work of art  
8  
9  
10 historians.  
11

## 12 13 14 15 **Acknowledgments** 16

17  
18 The authors thank Brera Art Gallery and Poldi Pezzoli Museum for giving them the opportunity of  
19  
20 carry out this research. They are grateful to Carlotta Beccaria and Paola Borghese for their trusting  
21  
22 support. Giulia Guarnieri and Simone Caglio have collaborated in the data acquisition and  
23  
24 processing. The project was funded by Bracco Foundation.  
25  
26  
27  
28  
29  
30  
31  
32  
33  
34  
35  
36  
37  
38  
39  
40  
41  
42  
43  
44  
45  
46  
47  
48  
49  
50  
51  
52  
53  
54  
55  
56  
57  
58  
59  
60  
61  
62  
63  
64  
65

## References

- 1  
2 Antonietta Gallone, 1988. Analisi di alcuni campioni di colore (Technical Report on Madonna col  
3 Bambino).
- 4  
5 Bacci, M., Baronti, S., Casini, A., Castagna, P., Linari, R., Orlando, A., Picollo, M., Radicati, B., 1995.  
6 Detection of Alteration Products in Artworks by Non-Destructive Spectroscopic Analysis.  
7 MRS Online Proc. Libr. Arch. 352. <https://doi.org/10.1557/PROC-352-153>
- 8  
9 Barberis, E., Manfredi, M., Marengo, E., Zilberstein, G., Zilberstein, S., Kossolapov, A., Righetti,  
10 P.G., 2019. Leonardo's Donna Nuda unveiled. *J. Proteomics* 207, 103450.  
11 <https://doi.org/10.1016/j.jprot.2019.103450>
- 12  
13 Beccaria, C., 2014. Some observations on the painting technique of Boltraffio's The Madonna and  
14 Child, in: Leonardo da Vinci's technical practice: Paintings, drawing and influence:  
15 Paintings, drawings and influence. M. Menu, Paris.
- 16  
17 Bell, I.M., Clark, R.J.H., Gibbs, P.J., 1997. Raman spectroscopic library of natural and synthetic  
18 pigments (pre- ≈ 1850 AD). *Spectrochim. Acta. A. Mol. Biomol. Spectrosc.* 53, 2159–2179.  
19 [https://doi.org/10.1016/S1386-1425\(97\)00140-6](https://doi.org/10.1016/S1386-1425(97)00140-6)
- 20  
21 Billinge, R., Syson, L., Spring, M., 2011. Altered Angels: Two Panels from the Immaculate  
22 Conception Altarpiece once in San Francesco Grande, Milan. *Natl. Gallery Tech. Bull.* 32,  
23 32–56.
- 24  
25 Bonizzoni, L., Bruni, S., Galli, A., Gargano, M., Guglielmi, V., Ludwig, N., Lodi, L., Martini, M., 2015.  
26 Non-invasive in situ analytical techniques working in synergy: The application on graduals  
27 held in the Certosa di Pavia. *Microchem. J.* 126.  
28 <https://doi.org/10.1016/j.microc.2015.12.001>
- 29  
30 Bonizzoni, L., Caglio, S., Galli, A., Poldi, G., 2008. A non invasive method to detect stratigraphy,  
31 thicknesses and pigment concentration of pictorial multilayers based on EDXRF and vis-RS:  
32 in situ applications. *Appl. Phys. A* 92, 203–210. <https://doi.org/10.1007/s00339-008-4482-6>
- 33  
34 Bonizzoni, L., Galli, A., Poldi, G., Milazzo, M., 2007. In situ non-invasive EDXRF analysis to  
35 reconstruct stratigraphy and thickness of Renaissance pictorial multilayers. *X-Ray*  
36 *Spectrom.* 36, 55–61. <https://doi.org/10.1002/xrs.930>
- 37  
38 Bonizzoni, L., Gargano, M., Ludwig, N., Martini, M., Galli, A., 2017. Looking for Common  
39 Fingerprints in Leonardo's Pupils Using Nondestructive Pigment Characterization. *Appl.*  
40 *Spectrosc.* 71, 1915–1926.
- 41  
42 Borghese, P., 2019. La Madonna con Bambino di Francesco Napoletano alla Pinacoteca di Brera:  
43 Richiami leonardeschi e appunti in fase di conservazione. *Kermes Riv. Restauro* 91–98.
- 44  
45 Bruni, S., Caglio, S., Guglielmi, V., Poldi, G., 2008. The joined use of n.i. spectroscopic analyses –  
46 FTIR, Raman, visible reflectance spectrometry and EDXRF – to study drawings and  
47 illuminated manuscripts. *Appl. Phys. A* 92, 103–108. [https://doi.org/10.1007/s00339-008-](https://doi.org/10.1007/s00339-008-4454-x)  
48 [4454-x](https://doi.org/10.1007/s00339-008-4454-x)
- 49  
50 Burgio, L., Clark, R.J., 2001. Library of FT-Raman spectra of pigments, minerals, pigment media and  
51 varnishes, and supplement to existing library of Raman spectra of pigments with visible  
52 excitation. *Spectrochim. Acta. A. Mol. Biomol. Spectrosc.* 57, 1491–1521.  
53 [https://doi.org/10.1016/s1386-1425\(00\)00495-9](https://doi.org/10.1016/s1386-1425(00)00495-9)
- 54  
55 Caliri, C., Bicchieri, M., Biocca, P., Romano, F.P., 2020. In situ macro X-Ray fluorescence scanning  
56 on a Leonardo da Vinci portrait. *X-Ray Spectrom.* n/a. <https://doi.org/10.1002/xrs.3193>
- 57  
58 Centeno, S.A., 2016. Identification of artistic materials in paintings and drawings by Raman  
59 spectroscopy: some challenges and future outlook. *J. Raman Spectrosc.* 47, 9–15.  
60 <https://doi.org/10.1002/jrs.4767>
- 61  
62  
63  
64  
65

- 1 Colombo, C., Bracci, S., Conti, C., Greco, M., Realini, M., 2011. Non-invasive approach in the study  
2 of polychrome terracotta sculptures: employment of the portable XRF to investigate  
3 complex stratigraphy. *X-Ray Spectrom.* 40, 273–279. <https://doi.org/10.1002/xrs.1336>
- 4 Comelli, D., Nevin, A., Valentini, G., Osticioli, I., Castellucci, E.M., Toniolo, L., Gulotta, D., Cubeddu,  
5 R., 2011. Insights into Masolino's wall paintings in Castiglione Olona: Advanced reflectance  
6 and fluorescence imaging analysis. *J. Cult. Herit.* 12, 11–18.  
7 <https://doi.org/10.1016/j.culher.2010.06.003>
- 8 Daffara, C., Fontana, R., 2011. Multispectral Infrared Reflectography to Differentiate Features in  
9 Paintings. *Microsc. Microanal.* 17, 691–695. <https://doi.org/10.1017/S1431927611000031>
- 10 de Viguerie, L., Beck, L., Salomon, J., Pichon, L., Walter, P., 2009. Composition of Renaissance paint  
11 layers: simultaneous particle induced X-ray emission and backscattering spectrometry.  
12 *Anal. Chem.* 81, 7960–7966. <https://doi.org/10.1021/ac901141v>
- 13 Delaney, J.K., Walmsley, E., Berrie, B.H., Fletcher, C.F., 2005. Multispectral Imaging of Paintings in  
14 the Infrared to Detect and Map Blue Pigments, in: *Scientific Examination of Art: Modern  
15 Techniques in Conservation And Analysis*. Natl Academy Pr, Washington, DC, p. 120.
- 16 de Viguerie, L., Walter, P., Laval, E., Mottin, B., Solé, V.A., 2010. Revealing the sfumato Technique  
17 of Leonardo da Vinci by X-Ray Fluorescence Spectroscopy. *Angew. Chem. Int. Ed.* 49, 6125–  
18 6128. <https://doi.org/10.1002/anie.201001116>
- 19 Di Lorenzo, A., Marani, P.C., 2019. *Leonardo e la Madonna Litta*. Ediz. a colori. Skira, Milan.
- 20 Dong, Y., Sørensen, K.M., He, S., Engelsen, S.B., 2017. Gum Arabic authentication and mixture  
21 quantification by near infrared spectroscopy. *Food Control* 78, 144–149.  
22 <https://doi.org/10.1016/j.foodcont.2017.02.002>
- 23 Elias, M., Cotte, P., 2008. Multispectral camera and radiative transfer equation used to depict  
24 Leonardo's sfumato in *Mona Lisa*. *Appl. Opt.* 47, 2146–2154.  
25 <https://doi.org/10.1364/AO.47.002146>
- 26 Galli, A., Caccia, M., Bonizzoni, L., Gargano, M., Ludwig, N., Poldi, G., Martini, M., 2020. Deep  
27 inside the color: How optical microscopy contributes to the elemental characterization of a  
28 painting. *Microchem. J.* 155, 104730. <https://doi.org/10.1016/j.microc.2020.104730>
- 29 Gargano, M., Bonizzoni, L., Grifoni, E., Melada, J., Guglielmi, V., Bruni, S., Ludwig, N., 2020. Multi-  
30 analytical investigation of panel, pigments and varnish of The Martyrdom of St. Catherine  
31 by Gaudenzio Ferrari (16th century). *J. Cult. Herit.*  
32 <https://doi.org/10.1016/j.culher.2020.06.014>
- 33 Gargano, M., Cavaliere, F., Viganò, D., Galli, A., Ludwig, N., 2017. A new spherical scanning system  
34 for infrared reflectography of paintings. *Infrared Phys. Technol.* 81, 128–136.  
35 <https://doi.org/10.1016/j.infrared.2016.12.011>
- 36 Gargano, M., Galli, A., Bonizzoni, L., Alberti, R., Aresi, N., Caccia, M., Castiglioni, I., Interlenghi, M.,  
37 Salvatore, C., Ludwig, N., Martini, M., 2019. The Giotto's workshop in the XXI century:  
38 looking inside the "God the Father with Angels" gable. *J. Cult. Herit.* 36, 255–263.  
39 <https://doi.org/10.1016/j.culher.2018.09.016>
- 40 Gargano, M., Ludwig, N., pandini, davide, 2012. Use of optical fibre in spectrometry and  
41 colorimetry with remote probes. *J. Int. Colour Assoc.* 8.
- 42 Gargano, M., Ludwig, N., Poldi, G., 2007. A new methodology for comparing IR reflectographic  
43 systems. *Infrared Phys. Technol.* 49, 249–253.  
44 <https://doi.org/10.1016/j.infrared.2006.06.013>
- 45 Gutman Rieppi, N., Price, B.A., Sutherland, K., Lins, A.P., Newman, R., Wang, P., Wang, T., Tague,  
46 T.J., 2020. Salvator Mundi: an investigation of the painting's materials and techniques.  
47 *Herit. Sci.* 8, 39. <https://doi.org/10.1186/s40494-020-00382-3>

- 1 Hark, R.R., Clark, R.J.H., 2010. Raman Microscopy of Diverse Samples of Lapis Lazuli at Multiple  
2 Excitation Wavelengths. *AIP Conf. Proc.* 1267, 315–316.  
3 <https://doi.org/10.1063/1.3482531>
- 4 Hartley, R.I., Gupta, R., 1994. Linear pushbroom cameras, in: Eklundh, J.-O. (Ed.), *Computer Vision*  
5 — *ECCV '94, Lecture Notes in Computer Science*. Springer, Berlin, Heidelberg, pp. 555–566.  
6 [https://doi.org/10.1007/3-540-57956-7\\_63](https://doi.org/10.1007/3-540-57956-7_63)
- 7 L. Keith, A. Roy, 1996. Giampietrino, Boltraffio, and the Influence of Leonardo. *Natl. Gallery Tech.*  
8 *Bull.* 4–19.
- 9 L. Keith, A. Roy, R. Morrison, P. Shade, 2011. Leonardo da Vinci's "Virgin of the Rocks": Treatment,  
10 Technique and Display. *Natl. Gallery Tech. Bull.* 32, 32–56.
- 11 Legrand, S., Vanmeert, F., Van der Snickt, G., Alfeld, M., De Nolf, W., Dik, J., Janssens, K., 2014.  
12 Examination of historical paintings by state-of-the-art hyperspectral imaging methods:  
13 from scanning infra-red spectroscopy to computed X-ray laminography. *Herit. Sci.* 2, 13.  
14 <https://doi.org/10.1186/2050-7445-2-13>
- 15 M. Spring, A. Mazzotta, A. Roy, R. Billinge, D. Pegg, 2011. Painting Practice in Milan in the 1490s:  
16 The Influence of Leonardo | Technical Bulletin Vol 32 | National Gallery, London. *Natl.*  
17 *Gallery Tech. Bull.* 32, 78–112.
- 18 Miliani, C., Rosi, F., Brunetti, B.G., Sgamellotti, A., 2010. In Situ Noninvasive Study of Artworks: The  
19 MOLAB Multitechnique Approach. *Acc. Chem. Res.* 43, 728–738.  
20 <https://doi.org/10.1021/ar100010t>
- 21 Pelagotti, A., Mastio, A.D., Rosa, A.D., Piva, A., 2008. Multispectral imaging of paintings. *IEEE Signal*  
22 *Process. Mag.* 25, 27–36. <https://doi.org/10.1109/MSP.2008.923095>
- 23 Sarrazin, P., Chiari, G., Gailhanou, M., 2009. A PORTABLE NON-INVASIVE XRD-XRF INSTRUMENT  
24 FOR THE STUDY OF ART OBJECTS 12.
- 25 Vagnini, M., Miliani, C., Cartechini, L., Rocchi, P., Brunetti, B.G., Sgamellotti, A., 2009. FT-NIR  
26 spectroscopy for non-invasive identification of natural polymers and resins in easel  
27 paintings. *Anal. Bioanal. Chem.* 395, 2107–2118. [https://doi.org/10.1007/s00216-009-](https://doi.org/10.1007/s00216-009-3145-6)  
28 [3145-6](https://doi.org/10.1007/s00216-009-3145-6)
- 29 van der Weerd, J., van Veen, M.K., Heeren, R.M.A., Boon, J.J., 2003. Identification of Pigments in  
30 Paint Cross Sections by Reflection Visible Light Imaging Microspectroscopy. *Anal. Chem.* 75,  
31 716–722. <https://doi.org/10.1021/ac020282g>
- 32 Vandenaabeele, P., Verpoort, F., Moens, L., 2001. Non-destructive analysis of paintings using  
33 Fourier transform Raman spectroscopy with fibre optics. *J. Raman Spectrosc.* 32, 263–269.  
34 <https://doi.org/10.1002/jrs.691>
- 35 Vandenaabeele, P., Wehling, B., Moens, L., Edwards, H., De Reu, M., Van Hooydonk, G., 2000.  
36 Analysis with micro-Raman spectroscopy of natural organic binding media and varnishes  
37 used in art. *Anal. Chim. Acta* 407, 261–274. [https://doi.org/10.1016/S0003-2670\(99\)00827-](https://doi.org/10.1016/S0003-2670(99)00827-2)  
38 [2](https://doi.org/10.1016/S0003-2670(99)00827-2)

1  
2  
3 **SUPPLEMENTARY MATERIALS**  
4  
5  
6  
7  
8  
9  
10  
11  
12  
13  
14  
15  
16  
17  
18  
19  
20  
21  
22  
23  
24  
25  
26  
27  
28  
29  
30  
31  
32  
33  
34  
35  
36  
37  
38  
39  
40  
41  
42  
43



44 Fig. 1Sa: The Virgin and Child (The Madonna of the Rose) by Giovanni Antonio Boltraffio: red dots indicate XRF, FORS,  
45 Raman and OM analysis areas; white dots refer to FT-IR analysis.  
46  
47  
48  
49  
50  
51  
52  
53  
54  
55  
56  
57  
58  
59  
60  
61  
62  
63  
64  
65

1  
2  
3  
4  
5  
6  
7  
8  
9  
10  
11  
12  
13  
14  
15  
16  
17  
18  
19  
20  
21  
22  
23  
24  
25  
26  
27  
28  
29  
30  
31  
32  
33  
34  
35  
36  
37  
38  
39  
40  
41  
42  
43  
44  
45  
46  
47  
48  
49  
50  
51  
52  
53  
54  
55  
56  
57  
58  
59  
60  
61  
62  
63  
64  
65



Fig. 1Sb: The Virgin feeding the Child by an unknown painter of the Lombard school: black dots indicate XRF, FORS, Raman and OM analysis areas; white dots refer to FT-IR analysis.





Fig. 1Sc: The Christ Child by Marco d'Oggiono: red dots indicate XRF, FORS, Raman and OM analysis areas; white dots refer to FT-IR analysis. As analyses were performed during restauration intervention, areas of cleaning proof areas are visible.

1  
2  
3  
4  
5  
6  
7  
8  
9  
10  
11  
12  
13  
14  
15  
16  
17  
18  
19  
20  
21  
22  
23  
24  
25  
26  
27  
28  
29  
30  
31  
32  
33  
34  
35  
36  
37  
38  
39  
40  
41  
42  
43  
44  
45  
46  
47  
48  
49  
50  
51  
52  
53  
54  
55  
56  
57  
58  
59  
60  
61  
62  
63  
64  
65



Fig. 1Sd: The Virgin and Child by Francesco Galli: red dots indicate XRF, FORS, Raman and OM analysis areas; white dots refer to FT-IR analysis.



1  
2  
3  
4  
5  
6  
7  
8  
9  
10  
11  
12  
13  
14  
15  
16  
17  
18  
19  
20  
21  
22  
23  
24  
25  
26  
27  
28  
29  
30  
31  
32  
33  
34  
35  
36  
37  
38  
39  
40  
41  
42  
43  
44  
45  
46  
47  
48  
49  
50  
51  
52  
53  
54  
55  
56  
57  
58  
59  
60  
61  
62  
63  
64  
65

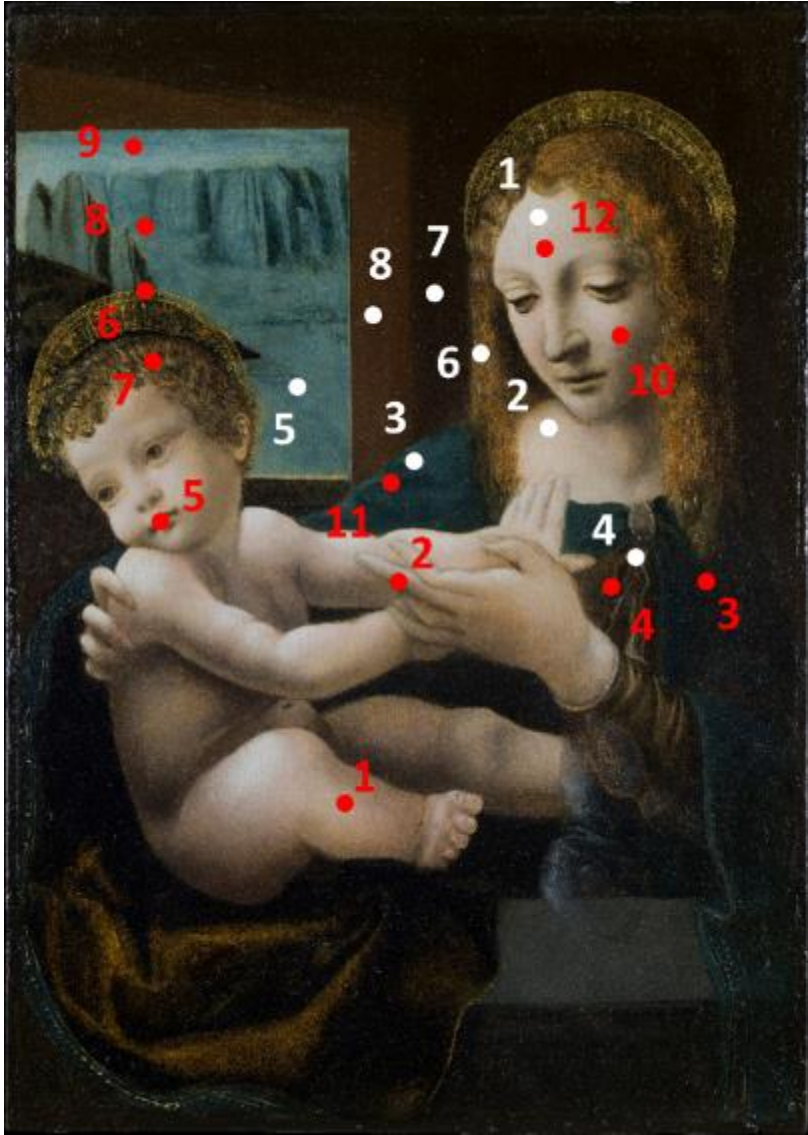


Fig. 1Se: The Virgin and Child by unknown painter of the Lombard school: red dots indicate XRF, FORS, Raman and OM analysis areas; white dots refer to FT-IR analysis.

1  
2  
3  
4  
5  
6  
7  
8  
9  
10  
11  
12  
13  
14  
15  
16  
17  
18  
19  
20  
21  
22  
23  
24  
25  
26  
27  
28  
29  
30  
31  
32  
33  
34  
35  
36  
37  
38  
39  
40  
41  
42  
43  
44  
45  
46  
47  
48  
49  
50  
51  
52  
53  
54  
55  
56  
57  
58  
59  
60  
61  
62  
63  
64  
65



Fig. 2S: Reflectogram 700-1000 nm of The Virgin feeding the Child panel by anonymous



Fig. 3S: UVF and IRFC images for The Virgin feeding the Child panel by the anonymous painter

1  
2  
3  
4  
5  
6  
7  
8  
9  
10  
11  
12  
13  
14  
15  
16  
17  
18  
19  
20  
21  
22  
23  
24  
25  
26  
27  
28  
29  
30  
31  
32  
33  
34  
35  
36  
37  
38  
39  
40  
41  
42  
43  
44  
45  
46  
47  
48  
49  
50  
51  
52  
53  
54  
55  
56  
57  
58  
59  
60  
61  
62  
63  
64  
65

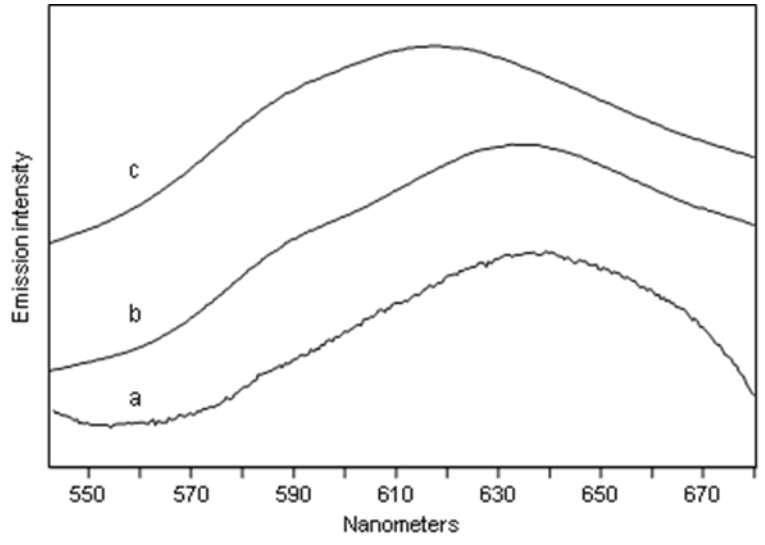


Fig. 4S: Emission spectra ( $\lambda_{exc}$  435 nm) of: (a) detail of the Virgin's red dress in the painting by Francesco Galli; (b) laboratory-made kermes lake spread on canvas with oil binder; (c) laboratory-made madder lake spread on canvas with oil binder. Both lakes were prepared according to traditional recipes, starting respectively from madder roots and kermes dried insects and using  $K_2CO_3$  and alum  $KAl(SO_4)_2 \cdot 12H_2O$  as inorganic reagents.

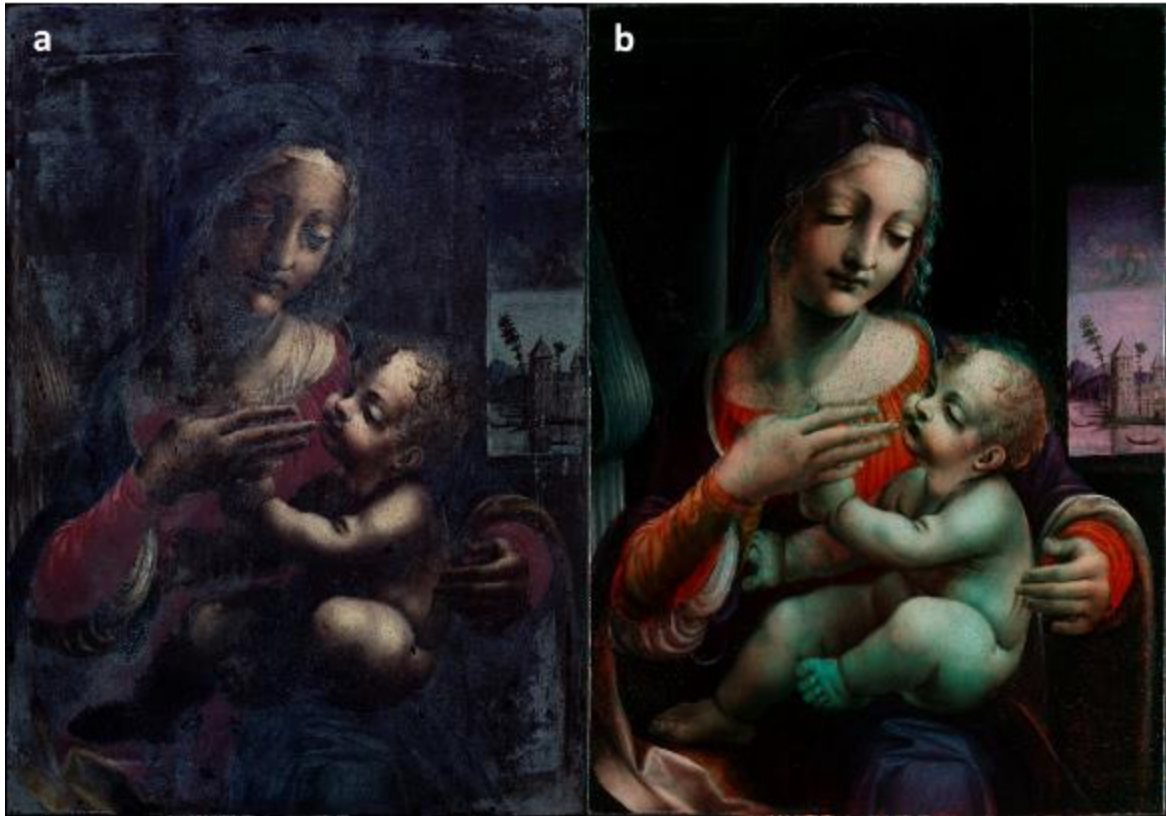


Fig. 5S: UVF (a) and IRFC (b) of Francesco Galli painting.



1  
2  
3  
4  
5  
6  
7  
8  
9  
10  
11  
12  
13  
14  
15  
16  
17  
18  
19  
20  
21  
22  
23  
24  
25  
26  
27  
28  
29  
30  
31  
32  
33  
34  
35  
36  
37  
38  
39  
40  
41  
42  
43  
44  
45  
46  
47  
48  
49  
50  
51  
52  
53  
54  
55  
56  
57  
58  
59  
60  
61  
62  
63  
64  
65



Fig. 6S: UVF of The Virgin and Child by unknown painter of the Lombard school

**Declaration of interests**

The authors declare that they have no known competing financial interests or personal relationships that could have appeared to influence the work reported in this paper.

The authors declare the following financial interests/personal relationships which may be considered as potential competing interests: