

TCP14 and TCP15 Mediate the Promotion of Seed Germination by Gibberellins in *Arabidopsis thaliana*

Dear Editor,

Seed germination is a major developmental transition in a plant's life that involves the concerted action of several genetic and physiological pathways (Holdsworth et al., 2008), and mostly consists of the resumption of embryo growth after a long quiescence imposed during seed maturation. In mature seeds, germination is repressed by abscisic acid (ABA), while favorable environmental conditions promote gibberellin (GA) biosynthesis and decrease ABA (Holdsworth et al., 2008). The increase in GA levels is essential for the rupture of testa and endosperm (Lee et al., 2002). The activation of cell division in the embryo is an integral part of germination that precedes the protrusion of the root through the seed coat. In *Arabidopsis*, this activation has been linked to significant early changes in the expression of cell-cycle elements (Masubelele et al., 2005). In the root apical meristem (RAM), GAs regulate cell divisions (Achar et al., 2009; Úbeda-Tomás et al., 2009). Similarly, the transcription factors (TFs) TEOSINTE BRANCHED1/CYCLOIDEA/PROLIFERATING CELL FACTOR14 (TCP14) and TCP15 have been proposed to regulate cell proliferation (Kieffer et al., 2011). Moreover, the activity of TCP14 is necessary to undergo seed germination and, remarkably, seeds lacking this activity are hypersensitive to the negative effects on germination of GA biosynthesis inhibitor paclobutrazol, suggesting a functional relationship between this TF and GAs (Tatematsu et al., 2008). Taking these observations into account, we hypothesized that TCP14 and TCP15 mediate GA-dependent activation of the cell cycle during germination.

To test this hypothesis, we first examined whether TCP15 activity is also necessary for germination. *TCP15* disruption in the *tcp15* mutant, like *tcp14*, delayed seed germination (Figure 1A). In agreement with this observation, *TCP15* was found to be expressed in developing embryos and in seeds during germination (Supplemental Figure 1), as already shown for *TCP14* (Tatematsu et al., 2008). *TCP14* and *TCP15* genes are closely related phylogenetically, suggesting that their activities might be redundant to some extent (Danisman et al., 2013). We therefore measured the germination ability of *tcp14 tcp15* mutant seeds. The *tcp14 tcp15* seeds showed a more severe reduction in the germination capability than any of the single mutants and, strikingly, neither GA application nor exposure to cold, which enhances GA accumulation, was able to efficiently overcome this defect, while a full recovery was obtained in the case of single mutants (Figure 1A). These data indicate that both TCP14 and TCP15 act downstream of GA and the stratification pathways that promote germination.

GAs regulate cell elongation and cell division by promoting the degradation of the DELLA proteins, which are negative regulators of the GA signaling pathway (Locascio et al., 2013). Optimal germination requires the induction of GA biosynthesis to counteract the repressive effect imposed by DELLAs. Given that TCP14 and TCP15 are necessary for root emergence (Figure 1A), we hypothesized that DELLA activity might prevent germination, at least in part, by repressing these two TCPs in dormant embryos. However, the expression of *TCP14* and *TCP15* was not altered in response to the conditional accumulation of the dominant version of the DELLA protein GAI, *gai-1*, in the *HS::gai-1* transgenic line (Alabadí et al., 2008), suggesting that if DELLAs regulate TCP activity, it should be at the post-transcriptional level (Supplemental Figure 2). DELLAs modulate multiple signaling pathways through physical interaction with many TFs (Locascio et al., 2013). Therefore, we tested if this would be the case for TCP14 and TCP15. Yeast two-hybrid assays demonstrated that TCP15 and TCP14 are able to interact with GAI and RGL2 (Figure 1B and Supplemental Figure 3A), two DELLA proteins with a more relevant role in the regulation of germination (Lee et al., 2002). Similarly, *myc*-GAI was efficiently pulled down in co-immunoprecipitation assays with anti-HA antibodies from leaf extracts that co-expressed HA-TCP14 (Figure 1C). Bimolecular fluorescence complementation assays in *Nicotiana benthamiana* leaves further confirmed the interaction between the TCPs and GAI and RGL2 (Figure 1D and Supplemental Figure 3B).

Next, we designed an *in vivo* transcriptional assay in leaves of *N. benthamiana* to test our hypothesis that DELLA proteins inactivate the TCPs upon interaction. To this end, we prepared a synthetic promoter consisting of six repeated copies of the TCP class I consensus binding site (GTGGGCCAC) separated by a 6-nucleotide spacer (AAAAAA), and placed it upstream of a minimal 35S promoter and the viral translational enhancer Ω to control the expression of the reporter gene *LUCIFERASE* (*LUC*). Expression of a translational fusion of TCP14 with the transcriptional activator VP16 (3xHA-VP16-TCP14) caused an increase in the *LUC* activity (Figure 1E). Remarkably, the activation ability was largely reversed when GAI-TAP was co-expressed with 3xHA-VP16-TCP14, whereas GAI-TAP alone did not significantly affect the activity of the reporter (Figure 1E), suggesting that DELLAs inactivate the TCPs upon interaction. Interestingly, a recent report shows that DELLAs inhibit the TCPs' DNA binding ability by physical interaction (Daviere et al., 2014).

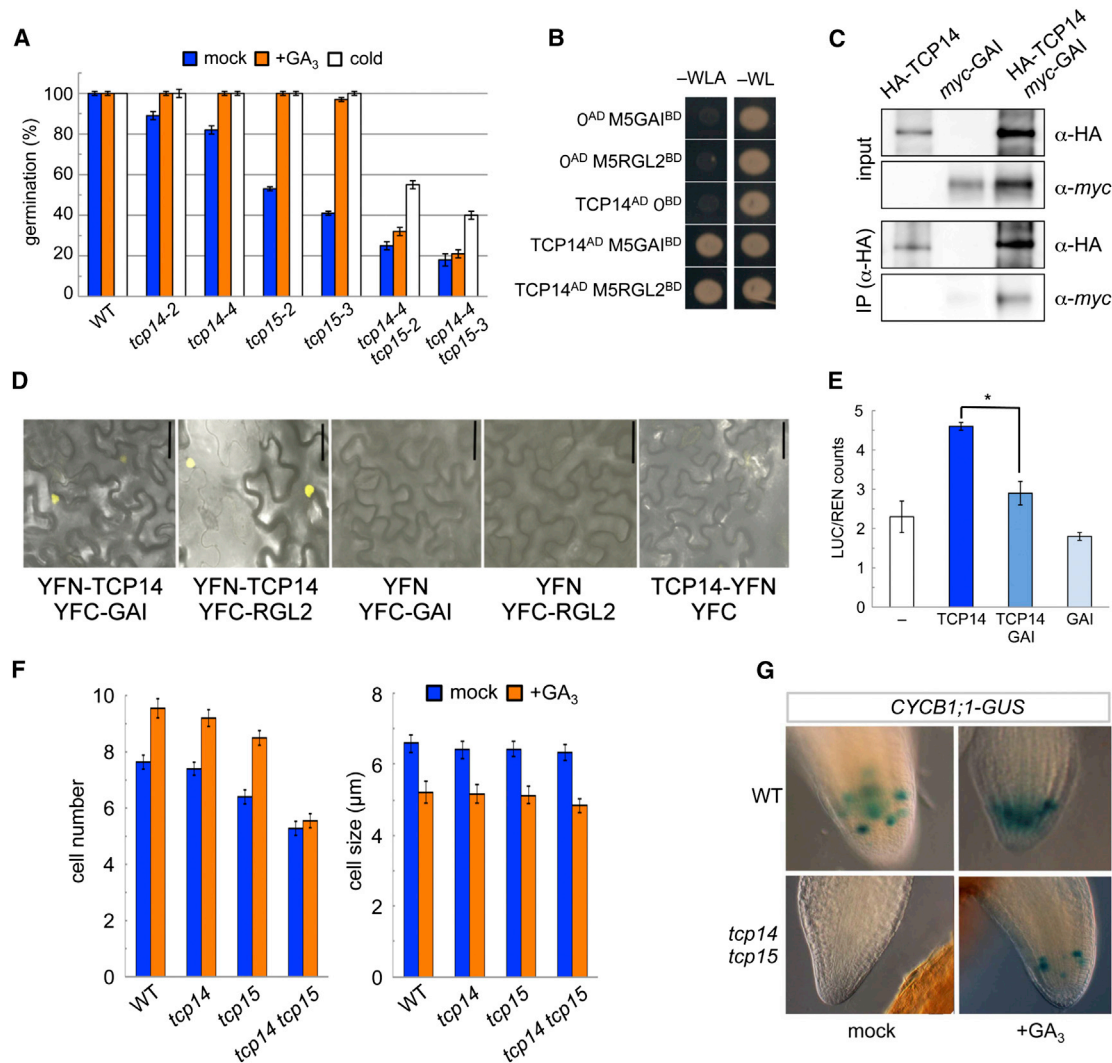


Figure 1. TCPs and Gibberellins Interact and Control Seed Germination

(A) Germination assays showing that GAs (1 mM GA₃) and stratification cannot fully overcome the delay imposed in the double mutant *tcp14 tcp15*. Freshly harvested seeds were used in these assays.

(B) Yeast two-hybrid assays demonstrating that TCP14 interacts physically with the DELLA proteins GAI and RGL2.

(C) Co-immunoprecipitation performed in leaves of *N. benthamiana* showing the interaction between *myc*-GAI and HA-TCP14. Immunoprecipitation was performed with anti-HA antibodies.

(D) Bimolecular fluorescence complementation assays showing the interaction between GAI and TCP14 in nuclei of epidermal cells of *N. benthamiana* leaves.

(E) GAI inhibits TCP14. Cells of *Agrobacterium* harboring the reporter construct were infiltrated in leaves of *N. benthamiana* alone or together with cells harboring effector constructs (TCP14, TCP14/GAI, or GAI). Firefly LUC activity was normalized to *Renilla* LUC. Values were normalized with respect to the ratio obtained for the reporter construct alone. Three biological repeats were performed, and error bars represent SEM. Asterisk indicates $P < 0.05$ in a Student's *t*-test.

(F) Graphs showing the number of cells at the protoderma and cortex of the RAM at embryonic stage in the wild-type and mutants, as well as the effect of GA treatment.

(G) TCP14 and TCP15 can regulate cell cycle at the RAM. *CYCB1;1::GUS* expression in wild-type and double mutant embryos with or without GA treatment.

It is well established that cell division occurring at embryonic root tips is important in promoting germination (Masubelele et al., 2005). Kieffer et al. (2011) have shown that TCP14 and TCP15 jointly regulate plant stature by promoting cell proliferation in young internodes. Therefore, we investigated whether these two TCPs are able to regulate cell division at the root apex of germinating embryos. The protoderma in the RAM of the double *tcp14 tcp15* and the single *tcp15* mutants developed

fewer cells than the wild-type control, whereas the number of cells in the *tcp14* RAM was not significantly altered (Figure 1F). The role of TCP14 in this response, however, is manifested by the greater impact that the double mutant has in this response compared with the single *tcp15*. Consistent with the negative effect that DELLAs exert on TCP's activity, GA addition greatly restored the cell number in the RAM of *tcp15* but not in that of *tcp14 tcp15* mutant embryos (Figure 1F). Interestingly, the

module DELLAs/TCPs seems to exert its control specifically over cell proliferation but not over cell size (Figure 1F). To further support the role of TCP14 and TCP15 in controlling cell proliferation at the embryonic RAM, we assessed the activity of *CYCB1;1::GUS*, a well-established marker for cells undergoing active divisions (Colon-Carmona et al., 1999), in the *tcp14 tcp15* mutant. The activity of a similar marker is regulated by TCP14 (Tatematsu et al., 2008), as is the expression of the *HISTONE H4* (Supplemental Figure 4). Accordingly, *CYCB1;1::GUS* activity was strongly diminished in the double mutant compared with the wild-type (Figure 1G) and, importantly, the ability of GAs to promote its activity was mostly suppressed in mutant embryos.

Next we asked whether TCP14 and TCP15 are involved also in controlling cell divisions in the RAM at later stages of development. We first tested this possibility by measuring root length in young seedlings, as this trait might be affected as a consequence of a defect in the cell division at the RAM. All mutants had a shorter root than the wild-type, the effect being stronger in *tcp14 tcp15* seedlings (Supplemental Figure 5A). Importantly, the positive effect of GA application on the final root length was seriously compromised in the double mutant, indicating that the activity of both TCPs is required for GAs to control this trait. In agreement with TCP14 and TCP15 controlling cell cycle at the RAM also in seedlings, *CYCB1;1-GUS* activity was diminished in the double mutant and was almost insensitive to treatments with GAs (Supplemental Figure 5B).

In recent years several works have provided genetic support for the involvement of DELLAs' interactors in the control of seed germination (Zhang et al., 2011; Park et al., 2013). Moreover, control of DELLAs over cell-cycle progression at the RAM has also been reported (Achard et al., 2009; Úbeda-Tomás et al., 2009). Nonetheless, a molecular mechanism explaining the action of DELLAs on seed germination has not been proposed. In this work we provide evidence for such a mechanism, showing that the transcriptional regulators DELLAs maintain the embryo in a quiescent state by restricting cell-cycle progression in the embryonic RAM through the inhibition of TCP14 and TCP15 activities upon interaction. Given the strong influence of environmental conditions on DELLA levels (Claeys et al., 2012), the DELLA-TCP module acts as a relay for environmental information into the cell cycle at the RAM to coordinate root emergence with other events during seed germination.

SUPPLEMENTAL INFORMATION

Supplemental Information is available at *Molecular Plant Online*.

FUNDING

F.R. was supported by a PhD fellowship from the Università degli Studi di Milano. S.M. is supported by the Cariplo Foundation (2011-2257). Work in the lab of M.A.B. and D.A. was funded by the Spanish Ministry of Science and Innovation (grants BIO2007-60923, BIO2010-15071, and CONSOLIDER2007-00057). A.F.-B. holds an FPI predoctoral fellowship from the Spanish MINECO.

ACKNOWLEDGMENTS

We wish to thank Dr Arp Schnittger for the *CYCB1;1-GUS* reporter line, Dr Brendan Davies for the *tcp14-4 tcp15-3* and *tcp14-4 tcp15-2* mutants, and Dr Miguel A. Pérez-Amador for the RGL2 construct for yeast two-hybrid assays. The authors are grateful to Dr Irma Roig

Villanova for critical reading of the manuscript. No conflict of interest declared.

Received: November 3, 2014

Revised: November 3, 2014

Accepted: November 24, 2014

Published: December 17, 2014

Francesca Resentini¹,
Amelia Felipo-Benavent², Lucia Colombo¹,
Miguel A. Blázquez², David Alabadi² and
Simona Masiero^{1,*}

¹Dipartimento di Bioscienze, Università degli Studi di Milano, via Celoria 26, 20133 Milano, Italy

²Instituto de Biología Molecular y Celular de Plantas (CSIC-Universidad Politécnica de Valencia), Ingeniero Fausto Elio, s/n 46022 Valencia, Spain

*Correspondence: Simona Masiero (simona.masiero@unimi.it)

<http://dx.doi.org/10.1016/j.molp.2014.11.018>

REFERENCES

- Achard, P., Gusti, A., Cheminant, S., Alioua, M., Dhondt, S., Coppens, F., Beemster, G.T., and Genschik, P. (2009). Gibberellin signaling controls cell proliferation rate in *Arabidopsis*. *Curr. Biol.* **19**:1188–1193.
- Alabadi, D., Gallego-Bartolomé, J., Orlando, L., García-Cárcel, L., Rubio, V., Martínez, C., Frigerio, M., Iglesias-Pedraz, J.M., Espinosa, A., Deng, X.W., et al. (2008). Gibberellins modulate light signaling pathways to prevent *Arabidopsis* seedling de-etiolation in darkness. *Plant J.* **53**:324–335.
- Claeys, H., Skirycz, A., Maleux, K., and Inze, D. (2012). DELLA signalling mediates stress-induced cell differentiation in *Arabidopsis* leaves through modulation of APC/C activity. *Plant Physiol.* **159**:739–747.
- Colon-Carmona, A., You, R., Haimovitch-Gal, T., and Doerner, P. (1999). Technical advance: spatio-temporal analysis of mitotic activity with a labile cyclin-GUS fusion protein. *Plant J.* **20**:503–508.
- Danisman, S., van Dijk, A.D., Bimbo, A., van der Wal, F., Hennig, L., de Folter, S., Angenent, G.C., and Immink, R.G. (2013). Analysis of functional redundancies within the *Arabidopsis* TCP transcription factor family. *J. Exp. Bot.* **64**:5673–5685.
- Daviere, J.M., Wild, M., Regnault, T., Baumberger, N., Eisler, H., Genschik, P., and Achard, P. (2014). Class I TCP-DELLA interactions in inflorescence shoot apex determine plant height. *Curr. Biol.* **24**:1923–1928.
- Holdsworth, M.J., Bentsink, L., and Soppe, W.J. (2008). Molecular networks regulating *Arabidopsis* seed maturation, after-ripening, dormancy and germination. *New Phytol.* **179**:33–54.
- Kieffer, M., Master, V., Waites, R., and Davies, B. (2011). TCP14 and TCP15 affect internode length and leaf shape in *Arabidopsis*. *Plant J.* **68**:147–158.
- Lee, S., Cheng, H., King, K.E., Wang, W., He, Y., Hussain, A., Lo, J., Harberd, N.P., and Peng, J. (2002). Gibberellin regulates *Arabidopsis* seed germination via RGL2, a GAI/RGA-like gene whose expression is up-regulated following imbibition. *Genes Dev.* **16**:646–658.
- Locascio, A., Blázquez, M.A., and Alabadi, D. (2013). Genomic analysis of DELLA protein activity. *Plant Cell Physiol.* **54**:1229–1237.
- Masubelele, N.H., Dewitte, W., Menges, M., Maughan, S., Collins, C., Huntley, R., Nieuwland, J., Scofield, S., and Murray, J.A. (2005). D-type cyclins activate division in the root apex to promote seed germination in *Arabidopsis*. *Proc. Natl. Acad. Sci. USA* **102**:15694–15699.
- Park, J., Nguyen, K.T., Park, E., Jeon, J.S., and Choi, G. (2013). DELLA proteins and their interacting RING finger proteins repress gibberellin responses by binding to the promoters of a subset of gibberellin-responsive genes in *Arabidopsis*. *Plant Cell* **25**:927–943.

Tatematsu, K., Nakabayashi, K., Kamiya, Y., and Nambara, E. (2008). Transcription factor AtTCP14 regulates embryonic growth potential during seed germination in *Arabidopsis thaliana*. *Plant J.* **53**:42–52.

Úbeda-Tomás, S., Federici, F., Casimiro, I., Beemster, G.T., Bhalerao, R., Swarup, R., Doerner, P., Haseloff, J., and Bennett, M.J. (2009).

Gibberellin signaling in the endodermis controls *Arabidopsis* root meristem size. *Curr. Biol.* **19**:1194–1199.

Zhang, Z.L., Ogawa, M., Fleet, C.M., Zentella, R., Hu, J., Heo, J.O., Lim, J., Kamiya, Y., Yamaguchi, S., and Sun, T.P. (2011). Scarecrow-like 3 promotes gibberellin signaling by antagonizing master growth repressor DELLA in *Arabidopsis*. *Proc. Natl. Acad. Sci. USA* **108**:2160–2165.