

Table 1: solvents concentration in the eluting gradient; A: water/trifluoroacetic acid 0.05% (v/v), B: methanol.

Time	A	B
min	%	%
0.00	90	10
5.00	83	17
7.50	70	30
8.50	65	35
8.80	0	100
9.30	90	10
11.00	90	10

Table 2: standard deviation of repeatability and intermediate repeatability in juice; SD: standard deviation, expressed in mg L⁻¹; RSD: residual standard deviation, expressed in percentage.

Compound	GSH			Catechin			Caffeic acid		
Concentration level	38.1	58.3	117.4	30.6	41.7	53.1	27.2	37.5	49.6
SD repeatability (mg L ⁻¹)	2.6	1.6	3.9	0.27	0.75	0.79	0.26	0.44	0.22
Repeatability limit (mg L ⁻¹)	5.1	3.1	7.6	0.53	1.5	1.6	0.52	0.87	0.43
RSD (%)	6.2	7.7	8.2	4.7	7.0	5.3	2.5	8.1	7.9
Average RSD (%)	7.4			5.7			6.2		

Table 3: standard deviation of repeatability and intermediate repeatability in white wine; SD: standard deviation, expressed in mg L⁻¹; RSD: residual standard deviation, expressed in percentage.

Compound	GSH			Catechin			Caffeic acid		
	Concentration level	1.2	3.1	6.8	5.4	12.6	24.6	0.21	4.7
SD repeatability (mg L ⁻¹)	0.0084	0.18	0.24	0.19	0.033	0.15	0.00078	0.11	0.17
Repeatability limit (mg L ⁻¹)	0.16	0.36	0.46	0.37	0.065	0.29	0.0015	0.21	0.34
RSD (%)	3.8	6.3	2.6	8.6	2.6	1.1	1.5	6.7	2.7
Average RSD (%)	4.2			4.1			3.6		

Table 4: description of grape juice and white wines analyzed and its quantification of GSH, catechin and caffeic.

Matrix	Cultivar	Vintage	Description	GSH	Catechin	Caffeic acid
				mg L ⁻¹	mg L ⁻¹	mg L ⁻¹
Juice	Sauvignon Blanc	2010	tank sample	40.0	5.9	0.78
Juice	Sauvignon Blanc	2010	tank sample	39.6	6.3	0.83
Juice	Sauvignon Blanc	2010	tank sample	10.6	6.6	0.51
Juice	Sauvignon Blanc	2010	tank sample	41.4	4.5	0.41
Juice	Sauvignon Blanc	2010	tank sample	41.8	8.7	0.59
Juice	Sauvignon Blanc	2010	tank sample	37.2	7.7	3.7
Juice	Sauvignon Blanc	2010	tank sample	31.6	7.0	1.0
Juice	Sauvignon Blanc	2010	tank sample	42.3	7.0	1.0
Juice	Sauvignon Blanc	2010	tank sample	36.5	6.6	1.0
Juice	Semillon	2010	tank sample	10.1	4.4	0.82
Juice	Semillon	2010	tank sample	20.7	3.4	0.50
Juice	Chenin Blanc	2010	tank sample	1.1	0.73	0.51
Wine	Sauvignon Blanc	2010	tank sample	9.8	23.0	0.64
Wine	Sauvignon Blanc	2010	tank sample	7.0	1.5	0.16
Wine	Sauvignon Blanc	2010	tank sample	8.3	2.5	6.2
Wine	Sauvignon Blanc	2010	tank sample	6.8	8.0	19.4
Wine	Sauvignon Blanc	2010	tank sample	1.8	9.0	6.6
Wine	Sauvignon Blanc	2010	tank sample	9.1	12.8	0.87
Wine	Sauvignon Blanc	2010	tank sample	6.6	3.1	0.89
Wine	Sauvignon Blanc	2010	tank sample	12.6	2.3	1.2
Wine	Sauvignon Blanc	2010	tank sample	4.2	2.7	0.66
Wine	Sauvignon Blanc	2010	tank sample	27.4	2.7	1.2
Wine	Sauvignon Blanc	2010	tank sample	5.9	9.7	0.29
Wine	Sauvignon Blanc	2010	tank sample	11.8	2.0	1.0
Wine	Sauvignon Blanc	2010	tank sample	11.5	1.2	1.0
Wine	Chenin Blanc	2010	tank sample	10.4	9.7	18.5
Wine	Chenin Blanc	2010	tank sample	4.3	3.2	0.51
Wine	Chenin Blanc	2010	tank sample	8.3	1.7	0.28
Wine	Chenin Blanc	2010	tank sample	5.8	1.8	0.84
Wine	Chenin Blanc	2010	tank sample	4.4	1.4	0.87
Wine	Chenin Blanc	2010	tank sample	3.5	2.9	1.2
Wine	Chenin Blanc	2010	tank sample	13.0	2.5	11.7
Wine	Chenin Blanc	2010	tank sample	10.8	1.8	7.1
Wine	Chenin Blanc	2010	tank sample	7.7	3.2	6.1
Wine	Chenin Blanc	2010	tank sample	0.39	2.0	0.89
Wine	Chenin Blanc	2010	tank sample	0.27	3.9	7.2
Wine	Chenin Blanc	2010	tank sample	0.34	1.4	3.7
Wine	Chenin Blanc	2010	tank sample	5.9	2.0	0.65
Wine	Chenin Blanc	2010	tank sample	n.d.	2.1	3.1
Wine	Chenin Blanc	2010	tank sample	n.d.	2.1	2.9
Wine	Chenin Blanc	2010	tank sample	0.19	1.9	2.8
Wine	Chenin Blanc	2010	tank sample	0.23	4.8	7.1
Wine	Chenin Blanc	2010	tank sample	7.2	4.0	1.0
Wine	Chenin Blanc	2010	tank sample	4.9	3.6	0.72

Wine	Sauvignon Blanc	2009	bottled wine	n.d.	5.3	5.5
Wine	Sauvignon Blanc	2009	bottled wine	n.d.	4.6	2.7
Wine	Petillant Blanc	2009	bottled wine	0.50	11.7	5.0
Wine	Semillon	2009	bottled wine	0.27	5.9	2.8
Wine	Sauvignon Blanc	2008	bottled wine	n.d.	5.0	8.0
Wine	Sauvignon Blanc	2008	bottled wine	0.27	5.9	2.8
Wine	Sauvignon Blanc	2008	bottled wine	0.13	1.6	6.4
Wine	Sauvignon Blanc	2008	bottled wine	n.d.	4.4	2.9
Wine	Sauvignon Blanc	2008	bottled wine	n.d.	2.5	3.9
Wine	Chardonnay	2007	bottled wine	n.d.	3.9	5.3
Wine	Sauvignon Blanc	2004	bottled wine	n.d.	2.2	5.3

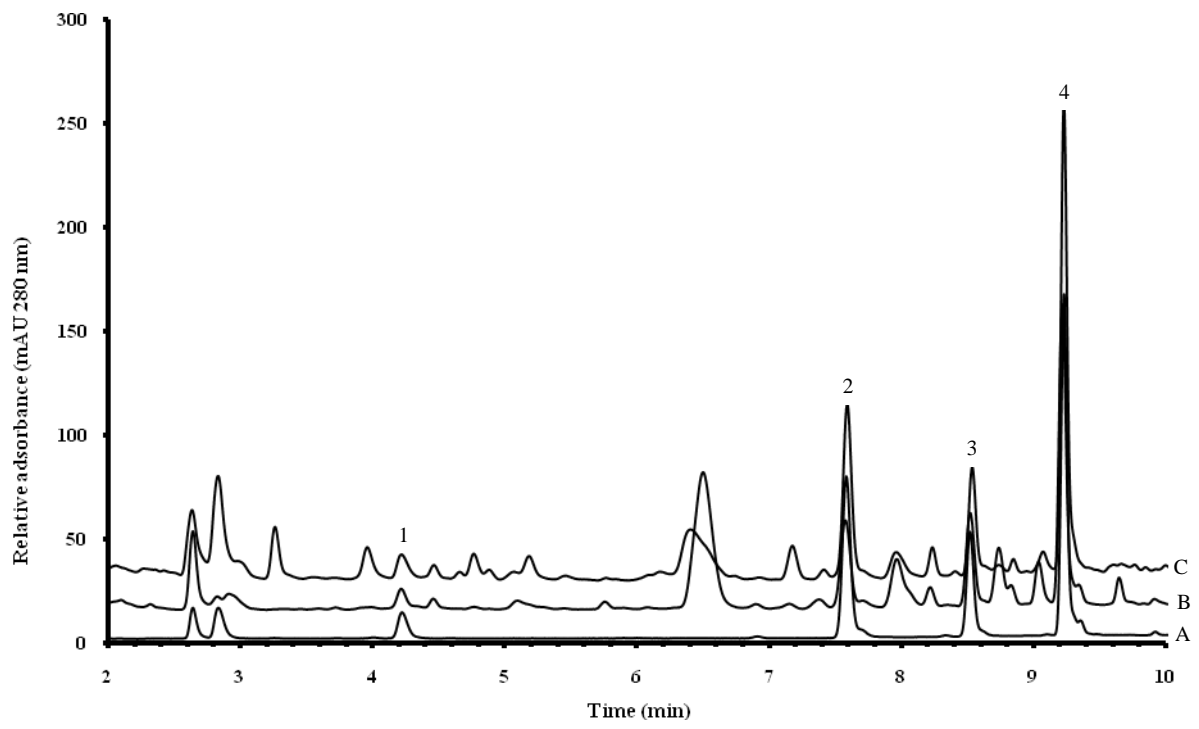


Figure 1

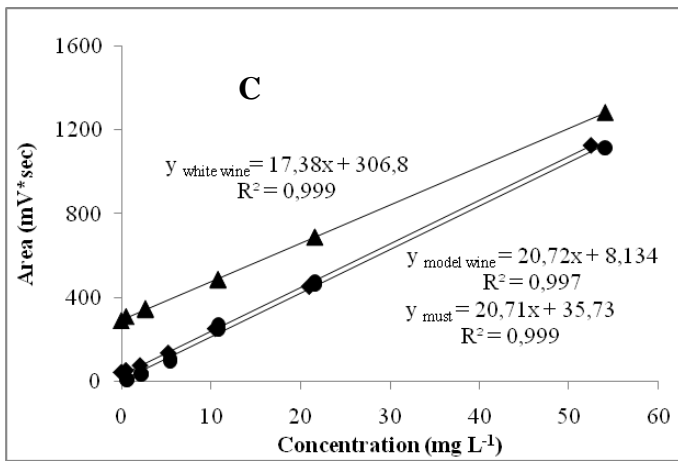
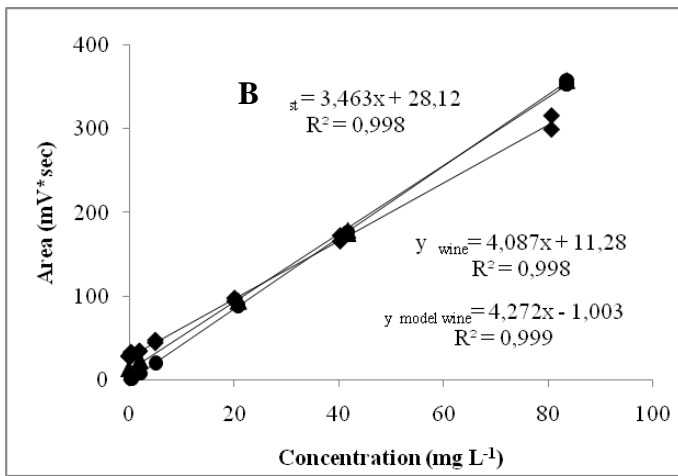
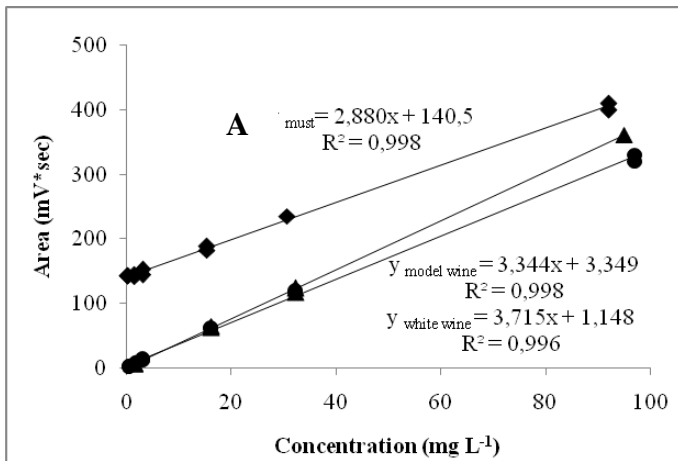


Figure 2