

RESEARCH

Open Access

Ambient PM exposure and DNA methylation in tumor suppressor genes: a cross-sectional study

Lifang Hou^{1,2*}, Xiao Zhang¹, Letizia Tarantini³, Francesco Nordio^{3,7}, Matteo Bonzini⁴, Laura Angelici³, Barbara Marinelli³, Giovanna Rizzo³, Laura Cantone³, Pietro Apostoli⁵, Pier Alberto Bertazzi³ and Andrea Baccarelli⁶

Abstract

Exposure to ambient air particles matter (PM) has been associated with increased risk of lung cancer. Aberrant tumor suppressor gene promoter methylation has emerged as a promising biomarker for cancers, including lung cancer. Whether exposure to PM is associated with peripheral blood leukocyte (PBL) DNA methylation in tumor suppressor genes has not been evaluated. In 63 male healthy steel workers with well-characterized exposure to metal-rich particles nearby Brescia, Italy, we evaluated whether exposure to PM and metal components was associated with PBL DNA methylation in 4 tumor suppressor genes (i.e., APC, p16, p53 and RASSF1A). Blood samples were obtained on the 1st (baseline) and 4th day (post-exposure) of the same work week and DNA methylation was measured using pyrosequencing. A linear mixed model was used to examine the correlations of the exposure with promoter methylation levels. Mean promoter DNA methylation levels of APC or p16 were significantly higher in post-exposure samples compared to that in baseline samples (p -values = 0.005 for APC, and p -value = 0.006 for p16). By contrast, the mean levels of p53 or RASSF1A promoter methylation was decreased in post-exposure samples compared to that in baseline samples (p -value = 0.015 for p53; and p -value < 0.001 for RASSF1A). In post-exposure samples, APC methylation was positively associated with PM₁₀ (β = 0.27, 95% CI: 0.13-0.40), and PM₁ (β = 0.23, 95% CI: 0.09-0.38). In summary, ambient PM exposure was associated with PBL DNA methylation levels of tumor suppressor genes of APC, p16, p53 and RASSF1A, suggesting that such methylation alterations may reflect processes related to PM-induced lung carcinogenesis.

Introduction

Ambient and occupational exposure to particular matter (PM) has been associated with increased risk of lung cancer [1,2]. Although the carcinogenic potential of several toxic metals in PM was well-recognized, the molecular mechanisms underlying their association with cancer risks remain poorly understood. Experimental and epidemiologic studies suggest that PM mass and metal components may induce critical carcinogenesis-related biological changes, including oxidative stress, immune deficiency, and chronic inflammation, which have recently been shown to alter gene expression via DNA methylation mechanism [3].

Growing evidence indicates that epigenetic dysregulation of gene expression plays a primary role in cancer etiology [4,5]. Methylation of 5'CpG islands in promoter

region has emerged as one of the most important epigenetic mechanisms in the development of human cancers [6]. Aberrant promoter methylation of a series of tumor suppressor genes has been detected in blood leukocyte DNA from lung cancer patients [7] and healthy subjects exposed to carcinogens [8,9]. In our previous studies, we have reported blood leukocyte global hypomethylation in subjects exposed to PM and metal components [10-12] and benzene [13]. Global hypomethylation is frequently observed in cancer tissues, including lung cancer [14,15] and blood leukocytes of cancer patients [16] and it often co-exists with gene-specific methylation alterations [17]. However, whether ambient PM and its metal components can induce DNA methylation alterations in tumor suppressor genes, which may be involved in air pollution-related lung carcinogenesis, has not been examined.

DNA methylation is mitotically stable and can be propagated through cell division from mother to daughter cells. However, experimental evidence from *in vitro*

* Correspondence: l-hou@northwestern.edu

¹Department of Preventive Medicine, Feinberg School of Medicine, Northwestern University, 680 N. Lakeshore Drive, Chicago, 60611, USA
Full list of author information is available at the end of the article

studies has shown that DNA methylation states in specific genes may change rapidly in response to environmental stressors. Whether DNA methylation in tumor suppressor genes changes in response to short-term exposure to environmental chemicals is yet to be determined. Tumor suppressor gene hypermethylation is widely proposed to represent one of the very early steps in human carcinogenesis [17]. Even transient DNA methylation changes may reflect condition of cellular stress associated with altered apoptosis, cell cycle control, and cell proliferation that may lead to the accumulation of persistent epigenetic and genetic damage after repeated exposures or in the presence of other pro-carcinogenic insults [18].

Foundry work, a specific condition of exposure to inhalable metal-rich particles, has been associated with increased risk of lung cancer [19]. Even in modern foundry facilities, workers are still exposed to substantially higher levels of airborne PM compared to those found outdoors [10]. In the present study of 63 foundry workers with different levels of usual PM exposure, we examined the association of PM exposure with 4 tumor suppressor genes (i.e., APC, p16, p53 and RASS1FA) promoter DNA methylation levels. To capture the potential effects of short PM exposures, we further evaluated the differences in DNA methylation measured at the beginning and at the end of a work week.

Material and Methods

Study population

We recruited 63 male healthy workers free of cancer and cardiovascular and pulmonary disease in an electric steel plant in Brescia, Northern Italy, between April and May 2006 as described previously [20]. All participants had been working in the current job position for at least one year. A self-administered questionnaire was used to collect detailed information on lifestyle, drug use, recent medical conditions, and residential history. Records from the factory administrative and clinical files were used to abstract information on occupational and past medical history. In order to discriminate short- and long-term effects of PM on biomarkers that are relevant to diseases, we obtained blood samples at two different times: i) the baseline sample was collected in the morning of the 1st day of a work week (following two days off work) before the beginning of any work activity; ii) the post-exposure sample was collected at the same time on the 4th work day of the same week. Individual written informed consent and approval from the local Institutional Review Board were obtained before the study.

Exposure measurement

Measures of the airborne levels of PM mass and metal components obtained in each of the 11 work areas of

the plant were used to estimate individual exposures as described before [20]. During the three work days between baseline and post-exposure samples collection, each of the study subjects recorded the time that he spent in each of the work areas. For each of the exposures, we calculated the personal time-weighted average exposure level by multiplying the time spent in each area by the level of PM mass or metal components in the area, which was then divided by the total time spent at work. The exposure levels of each pollutant in each of the work areas have shown very little variability over time, as measures repeated over one year in a subset of subjects showed very high correlation ($r^2 > 0.90$). Because all the study subjects reported in the questionnaire have performed their standard work routine during the three days of the study, the time-weighted personal levels of PM mass and metal components, in addition to the exposure during the week of the study, was also a measure of the usual exposure of the study subjects [10].

Measures of PM mass included concentrations of airborne PM with aerodynamic diameters $< 10 \mu\text{m}$ (PM₁₀) and $< 1 \mu\text{m}$ (PM₁) measured using a GRIMM 1100 light-scattering dust analyzer (Grimm Technologies, Inc. Douglasville, GA, USA). We measured air concentrations of individual metal particle components in PM₁₀, through multi-elemental analysis performed by means of inductively coupled-plasma mass spectrometer (ICP-MS, ELAN DRC II, Perkin Elmer, Waltham, MA, USA) using the Total Quant method. External calibration was performed using calibration standard 3, stock multi-element (10 $\mu\text{g}/\text{ml}$; Perkin Elmer, Waltham, MA, USA). The coefficient of variations for the metal concentrations obtained in repeated measures varied between 4% and 8%.

DNA Methylation measurement

We used EDTA tubes to collect 7 ml whole blood that was promptly centrifuged on site at 2500 rpm for 15 minutes. The buffy coat (400 μl) was transferred in a cryovial, immediately frozen in vapour phase of liquid nitrogen, and shipped in nitrogen dry shippers to the laboratory. DNA was extracted using the Wizard Genomic DNA purification kit (Promega, Madison, WI, USA) following the manufacturer's instructions. The samples collected on the 1st and 4th day were processed using the same exact protocols. Promoter regions and amplicons of four promoter CpG sites in APC, p53, or RASSF1A and seven CpG sites in p16 are listed in Additional file 1, **Table S1**. For all assays, we used built-in controls to verify bisulfite conversion efficiency. Compared with other common methods of DNA methylation analysis, pyrosequencing-based assays have the advantage of producing individual measures of methylation at

more than one CpG dinucleotide, thus reflecting more accurately DNA methylation in the region.

Statistical Analysis

For each subject, the pyrosequencing-based analysis of DNA methylation produced eight values each for APC, p53 or RASS1FA (methylation at four CpG dinucleotide sites for each of the genes, replicated in two analytical measurements) and fourteen values for p16 (methylation at seven CpG dinucleotide sites, replicated in two analytical measurements). Each subject was tested twice for baseline and post-exposure DNA sample. We first evaluated differences between baseline and post-exposure samples using the following model: $Y_{ijk} = \beta_0 + \beta_1(\text{Sample})_k + \beta_2(\text{CpG position})_j + \xi_{ijk} + \varepsilon_{ijk}$, where β_0 is the overall intercept; β_1 is the regression coefficient for the difference between baseline and post-exposure sample; β_2 is the regression coefficient for the difference between CpG dinucleotides position; $i = 1, 2, \dots, 63$ represents the subject; $j = 1, 2, \dots, 4/7$ represents the CpG dinucleotides position; $k = 1, 2$ represents the sample. The random intercept, ξ_{ijk} , represents the i th individual's deviation from the population mean intercept and models the correlation in the repeated measures within subject. ε_{ijk} is the residual error term. We estimated the effect of PM mass and PM metal component on post-exposure DNA sample with the following model: $Y_{ij} = \beta_0 + \beta_1(\text{Exposure})_i + \beta_2(\text{CpG position})_j + \xi_{ij} + \varepsilon_{ij}$ where β_0 is the overall intercept; β_1 is the regression coefficient representing the exposure effect; β_2 is the regression coefficient for the difference between CpG dinucleotides position; $i = 1, 2, \dots, 63$ represents the subject; $j = 1, 2, \dots, 4/7$ represents the CpG dinucleotides position. The random intercept, ξ_{ij} , represents the i th individual's deviation from the population mean intercept and models the correlation in the repeated measures within subject. ε_{ij} is the residual error term.

Covariates for multivariate models included the following potential confounders: age, body mass index (BMI), smoking and percent granulocytes in the differential blood count. We further conducted analyses without adjusting for percent granulocytes and did not observe meaningful differences in the results from the adjusted models. The independent variables used in multivariable models were selected *a priori* and included general characteristics potentially associated with cancer risk or other carcinogenic exposures. An unstructured covariance structure was used to model the within-subject errors. In order to compare the magnitude of the associations of DNA methylation genes with different exposures, we calculated standardized regression coefficients which express the effects on DNA methylation genes as the fraction of a standard deviation of DNA methylation genes associated with a standard deviation

increase in exposure. The Kenward-Roger approximation was used to estimate denominator degrees of freedom. A p-value < 0.05 was considered statistically significant. All statistical analyses were performed in SAS 9.2 (SAS Institute Inc., Cary, NC, USA).

Results

Characteristics and exposure levels of the study subjects

Characteristics and exposure levels of the study subjects were reported previously [21]. Briefly, the mean age of the study subjects was 44 years (range between 27 and 55 years). Twenty-five subjects (40%) were current smokers, who reported a mean number of 13.0 (SD = 7.2) cigarettes smoked every day. The mean BMI of the study participants was 26.5 Kg/m² (SD = 2.7). Table 1 shows the mean estimated levels of inhalable PM mass and air metal concentrations. For both PM mass and metal levels, the study subjects showed wide ranges of exposure levels. For instance, the minimum and maximum PM₁₀ levels were 73.72 µg/m³ and 1220.17 µg/m³, respectively. For some of the exposures (i.e., aluminum, manganese, zinc, and lead), the maximum individual exposure was more than 200 times higher than the minimum individual exposure.

The matrix of correlations between exposure levels (Additional file 1, **Table S2**) showed that nickel was positively correlated with all other metals and PM levels (r between 0.22 and 0.84). Zinc also showed positive correlations (r between 0.25 and 0.48) with nickel, arsenic, lead, iron as well as with PM₁₀ and PM₁. Arsenic showed positive correlations (r between 0.25 and 0.84) with manganese, nickel, zinc, lead, and iron. Lead was correlated (r between 0.28 and 0.99) with all other metals. Iron showed positive correlations (r between 0.26 and 0.77) with all other metals, except aluminum, as well as with PM₁₀ and PM₁ levels. PM₁₀ and PM₁ were positively correlated (r = 0.91).

Table 1 Distribution of PM mass and metals contained in PM* among study subjects (N = 63)

Exposure (µg/m ³)	N	Mean (SD)	Min	Percentile			Max
				25 th	50 th	75 th	
PM ₁₀	63	233.42 (214.56)	73.72	152.23	179.45	222.86	1220.17
PM ₁	63	8.48 (6.18)	1.71	3.51	9.01	11.35	30.49
Aluminum	63	8.50 (18.07)	0.40	1.48	2.05	7.41	84.07
Manganese	63	11.26 (30.41)	0.11	1.20	4.63	10.77	174.79
Nickel	63	0.30 (0.18)	0.02	0.23	0.25	0.46	0.72
Zinc	63	18.85 (26.37)	0.26	1.47	8.45	32.28	129.06
Arsenic	63	0.10 (0.1)	0.01	0.02	0.07	0.17	0.31
Lead	63	7.53 (17.46)	0.13	0.63	2.87	9.52	99.90
Iron	63	32.02 (22.08)	0.96	18.00	25.64	48.69	88.43

*Metals were measured in the PM₁₀ fraction of PM mass

Changes in DNA methylation during the work week

We compared DNA methylation in the baseline samples with those in the post-exposure samples (Table 2). Individuals trajectories for all subjects are shown in Figure 1. APC methylation showed non-significant increases at all four CpG sites evaluated. When the four CpG sites were combined, the mean APC methylation level significantly increased from baseline 4.65% 5 mC to post-exposure 4.89% 5 mC (p-value = 0.005). DNA methylation levels at the seven individual p16 promoter CpG sites showed inconsistent patterns. Of the seven CpG sites, methylation increased significantly only at CpG site 1 in post-exposure samples (from

baseline 2.02% 5 mC to 2.34% 5 mC, p-value = 0.012). The remaining six CpG sites showed non-significant or no increase in post-exposure samples. The mean methylation level of the combined seven CpG sites showed a significant increase from 2.20% 5 mC at baseline to 2.34% 5 mC after 4 work days (post-exposure) (p-value = 0.006). By contrast, p53 methylation decreased significantly at CpG site 4 (from 6.96% 5 mC to 6.59% 5 mC, p-value = 0.006), but not in the other three CpG sites. The mean methylation of the combined four p53 sites showed a significant decrease from 6.36% 5 mC in baseline samples to 6.16% 5 mC in post-exposure samples (p-value = 0.015). RASSF1A methylation showed significant decreases at all four CpG sites evaluated. The mean methylation value of the combined four RASSF1A CpG sites decreased significantly from 8.17% 5 mC in baseline samples to 7.08% 5 mC in post-exposure samples (p-value < 0.001).

Table 2 Promoter CpG site DNA methylation of four tumor suppressor genes measured in post-exposure and baseline samples

CpG site	N	DNA methylation				
		Baseline sample		Post-exposure sample	p-value	
APC (%5 mC)						
site 1	60	5.77	(5.41; 6.13)	6.13	(5.77; 6.49)	0.06
site 2	60	5.39	(5.10; 5.68)	5.45	(5.16; 5.74)	0.72
site 3	60	3.63	(3.32; 3.93)	3.92	(3.62; 4.23)	0.11
site 4	60	3.86	(3.56; 4.15)	4.06	(3.77; 4.35)	0.25
All sites combined	60	4.65	(3.70; 5.61)	4.89	(3.94; 5.85)	0.005
p16 (%5 mC)						
site 1	61	2.02	(1.81; 2.22)	2.34	(2.13; 2.55)	0.012
site 2	61	2.75	(2.51; 2.98)	2.9	(2.66; 3.14)	0.20
site 3	61	1.66	(1.43; 1.89)	1.88	(1.65; 2.11)	0.11
site 4	61	2.21	(2.05; 2.36)	2.17	(2.01; 2.33)	0.70
Site5	61	1.84	(1.57; 2.12)	1.93	(1.65; 2.20)	0.60
Site 6	61	1.71	(1.49; 1.92)	1.78	(1.56; 2.00)	0.58
Site 7	61	3.11	(2.83; 3.40)	3.31	(3.03; 3.60)	0.15
All sites combined	61	2.2	(1.78; 2.62)	2.34	(1.92; 2.76)	0.006
p53 (%5 mC)						
site 1	58	3.02	(2.83; 3.22)	2.93	(2.73; 3.13)	0.16
site 2	58	11.88	(11.26; 12.50)	11.56	(10.94; 12.18)	0.13
site 3	58	3.57	(3.37; 3.78)	3.56	(3.35; 3.76)	0.85
site 4	58	6.96	(6.52; 7.41)	6.59	(6.14; 7.03)	0.006
All sites combined	58	6.36	(2.93; 9.79)	6.16	(2.73; 9.60)	0.015
RASSF1A (%5 mC)						
site 1	57	3.68	(3.23; 4.13)	3.14	(2.69; 3.59)	0.003
site 2	57	10.14	(9.01; 11.27)	8.59	(7.45; 9.72)	< 0.001
site 3	57	8.43	(7.16; 9.70)	7.21	(5.94; 8.49)	0.009
site 4	57	10.61	(9.34; 11.88)	9.22	(7.95; 10.49)	0.002
All sites combined	57	8.17	(5.44; 10.90)	7.08	(4.36; 9.81)	< 0.001

Associations of DNA methylation with exposure to PM mass and metal component

The correlations of PM mass and its metal components with post-exposure promoter DNA methylation were examined. This set of analyses takes advantage of the large differences in exposure levels among the study subjects. We present results from unadjusted models as well as from models adjusted for age, BMI, smoking, proportion of granulocytes in the differential blood count. For each gene, the mean methylation levels of all CpG sites (Table 3) and the methylation levels of each individual CpG site (Additional file 1, **Table S3, S4, S5, and S6**) were regressed over the exposure levels. The mean methylation level of four CpG sites in APC promoter region was positively associated with the levels of PM₁₀ ($\beta_{std} = 0.27$, 95% CI: 0.14-0.40), PM₁ ($\beta_{std} = 0.23$, 95% CI: 0.10-0.37) and aluminum ($\beta_{std} = 0.15$, 95% CI: 0.00-0.29) in the unadjusted regression. The adjusted regression confirmed significant associations of APC methylation with PM₁₀ ($\beta_{std} = 0.27$, 95% CI: 0.13-0.40), and PM₁ ($\beta_{std} = 0.23$, 95% CI: 0.09-0.38), and a borderline significant association with aluminum ($\beta_{std} = 0.14$, 95% CI: 0.00-0.29). The mean methylation level of seven CpG sites in p16 promoter region was positively associated with the levels of zinc in both the unadjusted ($\beta_{std} = 0.18$, 95% CI 0.00-0.35) and adjusted ($\beta_{std} = 0.19$, 95% CI: 0.02-0.37) regressions. RASSF1A promoter methylation level measured in four CpG sites was negatively associated with the level of zinc exposure in both the unadjusted ($\beta_{std} = -0.18$, 95% CI: -0.35-0.01) and adjusted regressions ($\beta_{std} = -0.21$, 95% CI: -0.37-0.05). p53 methylation did not show any significant associations with the exposures evaluated.

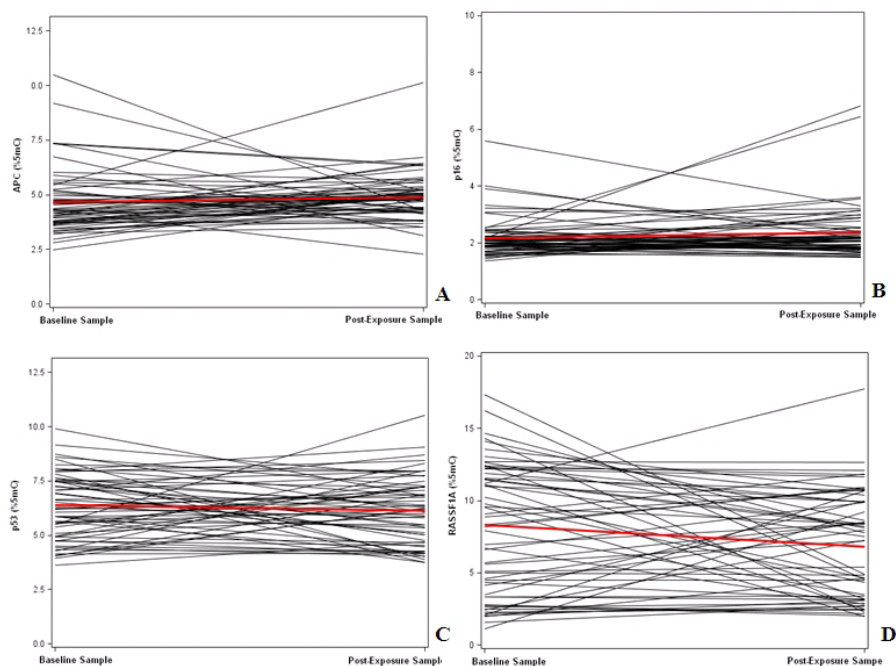


Figure 1 DNA methylation levels measured in baseline and post-exposure samples. The spaghetti plots show the changes of individuals' DNA methylation levels in APC (A), P16 (B), P53 (C), RASSF1A (D) (black lines) and the mean change (bolded red lines) between baseline and post-exposure samples.

Table 3 Association of PM mass and metal components with methylation of four tumor suppressor genes measured in post-exposure samples (N = 63)

Exposures	APC		p16		p53		RASSF1A	
	β_{Std}	95% CI	β_{Std}	95% CI	β_{Std}	95% CI	β_{Std}	95% CI
Unadjusted regression								
PM ₁₀	0.27 ^a	0.14 to 0.40	0.02	-0.17 to 0.20	0.00	-0.12 to 0.11	0.01	-0.16 to 0.18
PM ₁	0.23 ^b	0.10 to 0.37	0.02	-0.16 to 0.20	-0.06	-0.17 to 0.04	-0.01	-0.18 to 0.16
Aluminium	0.15 ^c	0.00 to 0.29	0.00	-0.18 to 0.18	0.04	-0.07 to 0.15	0.01	-0.15 to 0.18
Manganese	0.11	-0.03 to 0.26	-0.03	-0.22 to 0.15	-0.02	-0.15 to 0.11	0.11	-0.05 to 0.28
Nickel	0.08	-0.07 to 0.23	0.00	-0.18 to 0.18	0.04	-0.06 to 0.14	-0.02	-0.19 to 0.15
Zinc	0.06	-0.08 to 0.21	0.18 ^c	0.00 to 0.35	-0.06	-0.15 to 0.03	-0.18 ^c	-0.35 to -0.01
Arsenic	0.01	-0.15 to 0.17	-0.02	-0.20 to 0.16	0.05	-0.05 to 0.15	0.01	-0.17 to 0.18
Lead	0.12	-0.03 to 0.26	-0.01	-0.19 to 0.17	-0.04	-0.17 to 0.09	0.08	-0.09 to 0.25
Iron	0.05	-0.10 to 0.20	-0.02	-0.20 to 0.16	-0.03	-0.12 to 0.07	-0.06	-0.24 to 0.12
Multivariable regression*								
PM ₁₀	0.27 ^a	0.13 to 0.40	0.01	-0.17 to 0.20	0.00	-0.12 to 0.12	0.03	-0.13 to 0.19
PM ₁	0.23 ^b	0.09 to 0.38	0.02	-0.17 to 0.21	-0.06	-0.16 to 0.05	0.04	-0.14 to 0.21
Aluminium	0.14	0.00 to 0.29	0.00	-0.19 to 0.18	0.05	-0.06 to 0.17	0.05	-0.11 to 0.21
Manganese	0.12	-0.03 to 0.26	-0.03	-0.22 to 0.15	-0.02	-0.15 to 0.12	0.12	-0.04 to 0.28
Nickel	0.08	-0.08 to 0.23	0.00	-0.18 to 0.19	0.04	-0.06 to 0.13	-0.03	-0.19 to 0.13
Zinc	0.08	-0.07 to 0.23	0.19 ^c	0.02 to 0.37	-0.07	-0.16 to 0.03	-0.21 ^c	-0.37 to -0.05
Arsenic	0.02	-0.14 to 0.18	-0.01	-0.20 to 0.18	0.04	-0.07 to 0.14	-0.04	-0.21 to 0.13
Lead	0.12	-0.02 to 0.27	-0.01	-0.19 to 0.18	-0.05	-0.18 to 0.09	0.08	-0.08 to 0.24
Iron	0.05	-0.10 to 0.21	-0.01	-0.20 to 0.17	-0.04	-0.13 to 0.06	-0.08	-0.25 to 0.09

* multivariable mixed effects models adjusted for age, BMI, smoking, % of granulocytes

^a $p \leq 0.0001$; ^b $p \leq 0.001$; ^c $p \leq 0.05$

Correlation with other biomarkers previously examined in the study

In addition, we have previously examined a number of biomarkers in this study population, including mitochondria DNA copy number variation, global methylation levels measured in two repetitive elements, Alu and LINE-1, and hTERT, a telomere length maintenance gene [10,22,23]. We did not observe significant correlations between these markers with DNA methylation level in 4 tumor suppressor genes (Additional file 1, Table S7).

Discussion

In the present study, we showed that the mean methylation levels of promoter CpG sites were significantly associated with the exposure to PM and certain metal components. In particular, the mean DNA methylation levels of the CpG sites measured in APC or p16 promoter increased significantly in post-exposure DNA samples. By contrast, the mean of p53 or RASSF1A promoter CpG sites methylation decreased in post-exposure DNA samples. CpG site-specific analyses did not show consistent patterns of DNA methylation changes in any of the four genes.

Evidence in human subjects is rapidly mounting to establish associations of DNA methylation alterations with environmental exposures. Such methylation changes can persist over time even in the absence of the conditions that established them and even accumulate in response to continuous exposure [24-26]. Exposure to air pollution, particularly to ambient PM, has been associated with increased lung cancer risk [1,2]. Aberrant DNA promoter methylation of tumor suppressor genes, including hypermethylation of p16 [27,28], APC [29] and RASSF1A [28,30], and hypomethylation of p53 [31], has been observed in blood leukocyte DNA from lung cancer patients, suggesting that PBL DNA methylation may serve as a cancer-related biomarker.

The four genes of interest in our study are involved in cell-cycle control (p16), invasion and metastasis (APC), apoptosis (p53) and Ras signaling (RASSF1A) and have been shown to be altered in lung cancer patients' blood DNA [27-31]. Some of our findings are in line with previous reports. Zhang *et al* and Chanda *et al* found hypermethylation of p16 tumor suppressor gene in blood DNA from individuals exposed to emissions from indoor unventilated-stove coal usage [9] and individuals exposed to high-level arsenic [8]. Expression of p16, one of the most promising early epigenetic markers for the detection of lung cancer [32], was demonstrated to be regulated by promoter methylation [33]. Hypermethylation of p16 has been detected in blood leukocyte DNA from cancer-free smokers [34], lung cancer smokers [27,28] and in lung tissue from diesel exhaust-exposed

rats [35]. APC promoter hypermethylation, another early event of tumorigenesis, has been extensively studied in lung tumors [36]. APC promoter hypermethylation has also been seen in lung tissue in healthy subjects exposed to cigarette smoke [37] and blood in lung cancer patients [29]. Our finding, for the first time, shows that air pollution may induce blood leukocyte APC promoter hypermethylation. p53 is a key factor in DNA damage-signaling pathway, and p53 hypomethylation is associated with DNA double strand breaks and chromosomal instability [31]. In a previous human study, we observed p53 hypomethylation in blood DNA in Polish male non-smoking coke-oven workers exposed to polycyclic aromatic hydrocarbons (PAHs) [38,39], which is similar to findings in smoker lung cancer patients [31]. Our finding further suggests that p53 blood leukocyte hypomethylation may also occur in healthy subjects who are exposed to PM. Although hypermethylated RASSF1A promoter is frequently observed in the blood DNA of lung cancer patients [28,30], we found an inverse association between mean promoter RASSF1A methylation and PM exposure. It is possible that our results might represent tissue-specific effects of PM exposures on blood leukocytes, as well as a false positive finding due to the limited sample size. Different tumor suppressor genes may behave differently with respect to carcinogens. Air pollution may cause hypo- or hypermethylation in each individual gene depending on the role of the gene in cancer development. In our study, we observed positive association of p16 methylation with zinc, and negative association of RASSF1A methylation with zinc in both unadjusted and adjusted regressions. Zinc is a major component in PM in steel-production plants, and was present at high levels in PM measured in the present study (Table 1). Zinc inhalation has been shown to induce inflammation and oxidative stress in animal studies [40,41]. Kodavanti *et al* have also demonstrated that leachable zinc from PM induced both pulmonary and systemic changes in multiple *in vivo* toxicology experiments [42]. Furthermore, a study has shown that inhalation of soluble zinc sulfate, even at low levels (10 $\mu\text{g}/\text{m}^3$), caused gene expression change in heart tissue in healthy rats [43].

PM and its metal components may affect DNA methylation through several cellular processes, including oxidative stress/reactive oxygen species (ROS) generation and systemic inflammation/immune deficiency [44,45], the two major components in the etiology of cancer [46]. These cellular processes have been shown to be induced by exposure to PM [47,48] and associated with altered DNA methylation patterns [49].

Our study was based on occupationally PM-exposed volunteers who worked in several work areas of the same factory and did not include a different population

of subjects without a specific condition of exposure to PM. Limiting our investigation to individuals who have all been working in the same work facility avoided potential concerns related to the selection of external referents who might have differed from the exposed population in terms of socioeconomic factors and other characteristics determining hiring into the plant [50]. The differences in the individual levels of exposure in our study group were large, which provided sufficient contrast for identifying exposure-related changes in DNA methylation. For example, the lowest level of PM₁₀ observed in our study population (73.72 µg/m³) was only marginally higher than ambient PM₁₀ levels measured in the geographic area where the plant is located [average annual ambient PM₁₀ levels between 41 and 57 µg/m³ were recorded in the year of the study by different ambient monitoring stations in Brescia area] [51], whereas the highest level was 1220.17 µg/m³. It is worth noting that, although our study was based on a group of foundry workers with higher average exposures than the general population, the levels of exposure to metals in our study were all lower than the commonly accepted threshold limits for industrial settings [52]. As foundry workers may have additional exposures [53-57], we cannot exclude that exposures other than PM might have contributed to the observed effects, although study subjects in our study were in a modern facility with state-of-the-art systems for exposure reduction. A limitation of the study is that it did not include an unexposed comparison group. We cannot exclude that effects of potential changes in life-style from the start to the end of the week might have played a role in generating the observed associations. However, this group of foundry workers showed wide differences in exposures between individuals. The dose-response associations that we found between PM and APC methylation, and between zinc and p16 and RASSF1A methylation all hint to specific exposure-related effects.

In summary, we observed hypermethylation of p16 and APC, and hypomethylation of RASSF1A and p53 in a group of healthy foundry workers who had higher levels of exposure to PM compared to the general populations. Altered DNA methylation of tumor suppressor genes in easily obtainable cells such as PBLs may have potentials for developing biomarkers to detect biological alterations in PM-exposed subjects. These results suggest that such methylation alterations may reflect processes related to PM-induced lung carcinogenesis. However, because our study did not include lung cancer or other carcinogenesis-related endpoints, we cannot make inference on the biological significance of our findings. Further studies in larger populations are required before any firm conclusion could be reached on whether PM exposed individuals with such DNA

methylation alterations are at higher risk for lung cancer.

Additional material

Additional file 1: Supplementary Table S1, S2, S3, S4, S5, S6 and S7.

This file contains supplementary Tables S1, S2, S3, S4, S5, S6 and S7.

Acknowledgements

This work was supported by the National Institute of Environmental Health Sciences (5P30ES000002), Environmental Protection Agency (R832416), Cassa di Risparmio delle Province Lombarde (CARIPLO) Foundation 2007-5469, the Italian Ministry of Scientific Research-Programs of Scientific Research of Relevant National Interest 2007-2S2HT8, Robert H. Lurie Comprehensive Cancer Center, Feinberg School of Medicine Northwestern University (P30 CA060553), and NIH award 1RC1ES018461-01.

Author details

¹Department of Preventive Medicine, Feinberg School of Medicine, Northwestern University, 680 N. Lakeshore Drive, Chicago, 60611, USA. ²Robert H. Lurie Comprehensive Cancer Center Feinberg School of Medicine, Northwestern University, 303 E Superior Street, Chicago, 60611, USA. ³Department of Preventive Medicine and Department of Environmental and Occupational Health, University of Milan and IRCCS Maggiore Hospital, Mangiagalli and Regina Elena Foundation, Via Pace 9, Milan, 20122, Italy. ⁴Department of Clinical and Biological Sciences, University of Insubria, Viale Borri 57, Varese, 21100 Italy. ⁵Department of Experimental and Applied Medicine, Occupational Medicine and Industrial Hygiene, University of Brescia, P.le Spedali Civili 1, Brescia, 25123, Italy. ⁶Laboratory of Environmental Epigenetics, Department of Environmental Health, Harvard School of Public Health, 665 Huntington Ave, Boston, 02115, USA. ⁷Department of Clinical Medicine, Nephrology and Health Science, University of Parma Medical School, Via Gramsci 14, Parma, 43126, Italy.

Authors' contributions

LH and AB generated the study concept, directed statistical analysis, and drafted manuscript. ZX contributed to data interpretation and manuscript writing. LA and FN conducted the statistical analysis, prepared the results in tabular form and contributed to the data interpretation. LT and LC designed the methylation assays and performed the DNA methylation analysis. GR prepared the protocols for and coordinated the acquisition, preprocessing and handling of the biospecimens, and implemented QC/QA procedures. MB, BM, PA, and PAB planned and directed the study subject's recruitment and exposure assessment. All authors read and approved the final manuscript.

Competing interests

The authors declare that they have no competing interests.

Received: 27 January 2011 Accepted: 30 August 2011

Published: 30 August 2011

References

1. Dockery DW, Pope CA, Xu X, Spengler JD, Ware JH, Fay ME, Ferris BG Jr, Speizer FE: **An association between air pollution and mortality in six U.S. cities.** *N Engl J Med* 1993, **329**:1753-1759.
2. Vineis P, Husgafvel-Pursiainen K: **Air pollution and cancer: biomarker studies in human populations.** *Carcinogenesis* 2005, **26**:1846-1855.
3. Baccarelli A, Bollati V: **Epigenetics and environmental chemicals.** *Curr Opin Pediatr* 2009, **21**:243-251.
4. Feinberg AP, Tycko B: **The history of cancer epigenetics.** *Nat Rev Cancer* 2004, **4**:143-153.
5. Ke Q, Davidson T, Chen H, Kluz T, Costa M: **Alterations of histone modifications and transgene silencing by nickel chloride.** *Carcinogenesis* 2006, **27**:1481-1488.
6. Jones PA, Baylin SB: **The fundamental role of epigenetic events in cancer.** *Nat Rev Genet* 2002, **3**:415-428.

7. Bowman RV, Wright CM, Davidson MR, Francis SM, Yang IA, Fong KM: **Epigenomic targets for the treatment of respiratory disease.** *Expert Opin Ther Targets* 2009, **13**:625-640.
8. Chanda S, Dasgupta UB, Guhamazumder D, Gupta M, Chaudhuri U, Lahiri S, Das S, Ghosh N, Chatterjee D: **DNA hypermethylation of promoter of gene p53 and p16 in arsenic-exposed people with and without malignancy.** *Toxicol Sci* 2006, **89**:431-437.
9. Zhang AH, Bin HH, Pan XL, Xi XG: **Analysis of p16 gene mutation, deletion and methylation in patients with arseniasis produced by indoor unventilated-stove coal usage in Guizhou, China.** *J Toxicol Environ Health A* 2007, **70**:970-975.
10. Tarantini L, Bonzini M, Apostoli P, Pegoraro V, Bollati V, Marinelli B, Cantone L, Rizzo G, Hou L, Schwartz J, et al: **Effects of particulate matter on genomic DNA methylation content and iNOS promoter methylation.** *Environ Health Perspect* 2009, **117**:217-222.
11. Baccarelli A, Wright RO, Bollati V, Tarantini L, Litonjua AA, Suh HH, Zanobetti A, Sparrow D, Vokonas PS, Schwartz J: **Rapid DNA methylation changes after exposure to traffic particles.** *Am J Respir Crit Care Med* 2009, **179**:572-578.
12. Wright RO, Schwartz J, Wright RJ, Bollati V, Tarantini L, Park SK, Hu H, Sparrow D, Vokonas P, Baccarelli A: **Biomarkers of lead exposure and DNA methylation within retrotransposons.** *Environ Health Perspect* 2010, **118**:790-795.
13. Bollati V, Baccarelli A, Hou L, Bonzini M, Fustinoni S, Cavallo D, Byun HM, Jiang J, Marinelli B, Pesatori AC, et al: **Changes in DNA methylation patterns in subjects exposed to low-dose benzene.** *Cancer Res* 2007, **67**:876-880.
14. Saito K, Kawakami K, Matsumoto I, Oda M, Watanabe G, Minamoto T: **Long interspersed nuclear element 1 hypomethylation is a marker of poor prognosis in stage IA non-small cell lung cancer.** *Clin Cancer Res* 2010, **16**:2418-2426.
15. Anisowicz A, Huang H, Braunschweiger KI, Liu Z, Giese H, Wang H, Mamaev S, Olejnik J, Massion PP, Del Mastro RG: **A high-throughput and sensitive method to measure global DNA methylation: application in lung cancer.** *BMC Cancer* 2008, **8**:222.
16. Hou L, Wang H, Sartori S, Gawron A, Lissowska J, Bollati V, Tarantini L, Zhang FF, Zatonski W, Chow WH, Baccarelli A: **Blood leukocyte DNA hypomethylation and gastric cancer risk in a high-risk Polish population.** *Int J Cancer* 2010, **127**:1866-1874.
17. Yegnasubramanian S, Haffner MC, Zhang Y, Gurel B, Cornish TC, Wu Z, Irizarry RA, Morgan J, Hicks J, DeWeese TL, et al: **DNA hypomethylation arises later in prostate cancer progression than CpG island hypermethylation and contributes to metastatic tumor heterogeneity.** *Cancer Res* 2008, **68**:8954-8967.
18. Seaton A, MacNee W, Donaldson K, Godden D: **Particulate air pollution and acute health effects.** *Lancet* 1995, **345**:176-178.
19. Kuo HW, Chang CL, Liang WM, Chung BC: **Respiratory abnormalities among male foundry workers in central Taiwan.** *Occup Med (Lond)* 1999, **49**:499-505.
20. Hou L, Zhu ZZ, Zhang X, Nordio F, Bonzini M, Schwartz J, Hoxha M, Dioni L, Marinelli B, Pegoraro V, et al: **Airborne particulate matter and mitochondrial damage: a cross-sectional study.** *Environ Health* 2010, **9**:48.
21. Bollati V, Marinelli B, Apostoli P, Bonzini M, Nordio F, Hoxha M, Pegoraro V, Motta V, Tarantini L, Cantone L, et al: **Exposure to metal-rich particulate matter modifies the expression of candidate microRNAs in peripheral blood leukocytes.** *Environ Health Perspect* 2010, **118**:763-768.
22. Hou L, Zhu ZZ, Zhang X, Nordio F, Bonzini M, Schwartz J, Hoxha M, Dioni L, Marinelli B, Pegoraro V, et al: **Airborne particulate matter and mitochondrial damage: a cross-sectional study.** *Environ Health* 2010, **9**:48.
23. Dioni L, Hoxha M, Nordio F, Bonzini M, Tarantini L, Albetti B, Savarese A, Schwartz J, Bertazzi PA, Apostoli P, et al: **Effects of Short-Term Exposure to Inhalable Particulate Matter on Telomere Length, Telomerase Expression, and Telomerase Methylation in Steel Workers.** *Environ Health Perspect* 2011, **119**:622-627.
24. Anway MD, Cupp AS, Uzumcu M, Skinner MK: **Epigenetic transgenerational actions of endocrine disruptors and male fertility.** *Science* 2005, **308**:1466-1469.
25. Richards EJ: **Inherited epigenetic variation—revisiting soft inheritance.** *Nat Rev Genet* 2006, **7**:395-401.
26. Dolinoy DC, Weidman JR, Jirtle RL: **Epigenetic gene regulation: linking early developmental environment to adult disease.** *Reprod Toxicol* 2007, **23**:297-307.
27. Suga Y, Miyajima K, Oikawa T, Maeda J, Usuda J, Kajiwara N, Ohira T, Uchida O, Tsuboi M, Hirano T, et al: **Quantitative p16 and ESR1 methylation in the peripheral blood of patients with non-small cell lung cancer.** *Oncol Rep* 2008, **20**:1137-1142.
28. Fujiwara K, Fujimoto N, Tabata M, Nishii K, Matsuo K, Hotta K, Kozuki T, Aoe M, Kiura K, Ueoka H, Tanimoto M: **Identification of epigenetic aberrant promoter methylation in serum DNA is useful for early detection of lung cancer.** *Clin Cancer Res* 2005, **11**:1219-1225.
29. Usadel H, Brabender J, Danenberg KD, Jeronimo C, Harden S, Engles J, Danenberg PV, Yang S, Sidransky D: **Quantitative adenomatous polyposis coli promoter methylation analysis in tumor tissue, serum, and plasma DNA of patients with lung cancer.** *Cancer Res* 2002, **62**:371-375.
30. Hsu HS, Chen TP, Hung CH, Wen CK, Lin RK, Lee HC, Wang YC: **Characterization of a multiple epigenetic marker panel for lung cancer detection and risk assessment in plasma.** *Cancer* 2007, **110**:2019-2026.
31. Woodson K, Mason J, Choi SW, Hartman T, Tangrea J, Virtamo J, Taylor PR, Albanes D: **Hypomethylation of p53 in peripheral blood DNA is associated with the development of lung cancer.** *Cancer Epidemiol Biomarkers Prev* 2001, **10**:69-74.
32. Belinsky SA, Nikula KJ, Palmisano WA, Michels R, Saccomanno G, Gabrielson E, Baylin SB, Herman JG: **Aberrant methylation of p16(INK4a) is an early event in lung cancer and a potential biomarker for early diagnosis.** *Proc Natl Acad Sci USA* 1998, **95**:11891-11896.
33. Herman JG, Merlo A, Mao L, Lapidus RG, Issa JP, Davidson NE, Sidransky D, Baylin SB: **Inactivation of the CDKN2/p16/MTS1 gene is frequently associated with aberrant DNA methylation in all common human cancers.** *Cancer Res* 1995, **55**:4525-4530.
34. Tessema M, Yu YY, Stidley CA, Machida EO, Schuebel KE, Baylin SB, Gabrielson SA: **Concomitant promoter methylation of multiple genes in lung adenocarcinomas from current, former and never smokers.** *Carcinogenesis* 2009, **30**:1132-1138.
35. Belinsky SA, Snow SS, Nikula KJ, Finch GL, Tellez CS, Palmisano WA: **Aberrant CpG island methylation of the p16(INK4a) and estrogen receptor genes in rat lung tumors induced by particulate carcinogens.** *Carcinogenesis* 2002, **23**:335-339.
36. Tsou JA, Hagen JA, Carpenter CL, Laird-Offringa IA: **DNA methylation analysis: a powerful new tool for lung cancer diagnosis.** *Oncogene* 2002, **21**:5450-5461.
37. Tsuchiya T, Tamura G, Sato K, Endoh Y, Sakata K, Jin Z, Motoyama T, Usuba O, Kimura W, Nishizuka S, et al: **Distinct methylation patterns of two APC gene promoters in normal and cancerous gastric epithelia.** *Oncogene* 2000, **19**:3642-3646.
38. Pavanello S, Bollati V, Pesatori AC, Kapka L, Bolognesi C, Bertazzi PA, Baccarelli A: **Global and gene-specific promoter methylation changes are related to anti-B[a]PDE-DNA adduct levels and influence micronuclei levels in polycyclic aromatic hydrocarbon-exposed individuals.** *Int J Cancer* 2009, **125**:1692-1697.
39. Pavanello S, Pesatori AC, Dioni L, Hoxha M, Bollati V, Siwinska E, Mielzynska D, Bolognesi C, Bertazzi PA, Baccarelli A: **Shorter telomere length in peripheral blood lymphocytes of workers exposed to polycyclic aromatic hydrocarbons.** *Carcinogenesis* 2010, **31**:216-221.
40. Kodavanti UP, Schladweiler MC, Ledbetter AD, Hauser R, Christiani DC, Samet JM, McGee J, Richards JH, Costa DL: **Pulmonary and systemic effects of zinc-containing emission particles in three rat strains: multiple exposure scenarios.** *Toxicol Sci* 2002, **70**:73-85.
41. Kodavanti UP, Moyer CF, Ledbetter AD, Schladweiler MC, Costa DL, Hauser R, Christiani DC, Nyska A: **Inhaled environmental combustion particles cause myocardial injury in the Wistar Kyoto rat.** *Toxicol Sci* 2003, **71**:237-245.
42. Kodavanti UP, Schladweiler MC, Gilmour PS, Wallenborn JG, Mandavilli BS, Ledbetter AD, Christiani DC, Runge MS, Karoly ED, Costa DL, et al: **The role of particulate matter-associated zinc in cardiac injury in rats.** *Environ Health Perspect* 2008, **116**:13-20.
43. Wallenborn JG, Evansky P, Shannahan JH, Vallanat B, Ledbetter AD, Schladweiler MC, Richards JH, Gottipolu RR, Nyska A, Kodavanti UP: **Subchronic inhalation of zinc sulfate induces cardiac changes in healthy rats.** *Toxicol Appl Pharmacol* 2008, **232**:69-77.

44. Chahine T, Baccarelli A, Litonjua A, Wright RO, Suh H, Gold DR, Sparrow D, Vokonas P, Schwartz J: **Particulate air pollution, oxidative stress genes, and heart rate variability in an elderly cohort.** *Environ Health Perspect* 2007, **115**:1617-1622.
45. Ren C, Park SK, Vokonas PS, Sparrow D, Wilker E, Baccarelli A, Suh HH, Tucker KL, Wright RO, Schwartz J: **Air pollution and homocysteine: more evidence that oxidative stress-related genes modify effects of particulate air pollution.** *Epidemiology* 2010, **21**:198-206.
46. Khansari N, Shakiba Y, Mahmoudi M: **Chronic inflammation and oxidative stress as a major cause of age-related diseases and cancer.** *Recent Pat Inflamm Allergy Drug Discov* 2009, **3**:73-80.
47. Li N, Kim S, Wang M, Froines J, Sioutas C, Nel A: **Use of a stratified oxidative stress model to study the biological effects of ambient concentrated and diesel exhaust particulate matter.** *Inhal Toxicol* 2002, **14**:459-486.
48. Li N, Sioutas C, Cho A, Schmitz D, Misra C, Sempf J, Wang M, Oberley T, Froines J, Nel A: **Ultrafine particulate pollutants induce oxidative stress and mitochondrial damage.** *Environ Health Perspect* 2003, **111**:455-460.
49. Fratelli M, Goodwin LO, Orom UA, Lombardi S, Tonelli R, Mengozzi M, Ghezzi P: **Gene expression profiling reveals a signaling role of glutathione in redox regulation.** *Proc Natl Acad Sci USA* 2005, **102**:13998-14003.
50. Pearce N, Checkoway H, Kriebel D: **Bias in occupational epidemiology studies.** *Occup Environ Med* 2007, **64**:562-568.
51. Anselmi U, Patelli R: **Rapporto sulla qualità dell'aria di Brescia e provincia [in Italian].** Milan:ARPA Lombardia. 2006.
52. Hygienists ACoG: **2009 Threshold Limit Values and Biological Exposure Indices.** 2009.
53. Gomes J, Lloyd O, Norman N: **The health of the workers in a rapidly developing country: effects of occupational exposure to noise and heat.** *Occup Med (Lond)* 2002, **52**:121-128.
54. Lewis S, Mason C, Srna J: **Carbon monoxide exposure in blast furnace workers.** *Aust J Public Health* 1992, **16**:262-268.
55. Mirer FE: **Foundries.** In: *Encyclopedia of Occupational Health and Safety* (Stellman JM, ed). Geneva:International Labor Office, 82.81-82.56. 1998.
56. Sorahan T, Faux AM, Cooke MA: **Mortality among a cohort of United Kingdom steel foundry workers with special reference to cancers of the stomach and lung, 1946-90.** *Occup Environ Med* 1994, **51**:316-322.
57. Park RM: **Mortality at an automotive engine foundry and machining complex.** *J Occup Environ Med* 2001, **43**:483-493.

doi:10.1186/1743-8977-8-25

Cite this article as: Hou et al.: Ambient PM exposure and DNA methylation in tumor suppressor genes: a cross-sectional study. *Particle and Fibre Toxicology* 2011 **8**:25.

**Submit your next manuscript to BioMed Central
and take full advantage of:**

- Convenient online submission
- Thorough peer review
- No space constraints or color figure charges
- Immediate publication on acceptance
- Inclusion in PubMed, CAS, Scopus and Google Scholar
- Research which is freely available for redistribution

Submit your manuscript at
www.biomedcentral.com/submit

